

# ER-TFTM028-4

## TFT LCD Module Datasheet



## EastRising Technology Co., Limited

**Attention:**

- A. Some specifications of IC are not listed in this datasheet. Please refer to the IC datasheet for more details.
- B. The related documents for interfacing, demo code, ic datasheet are all available, please download from our web.
- C. Please pay more attention to "INSPECTION CRITERIA" in this datasheet. We assume you already agree with these criterions when you place an order with us. No more recommendations.

REV	DESCRIPTION	RELEASE DATE
1.0	Preliminary Release	Mar-06-2014
2.0	Add Capacitive Touch Panel	Jun-01-2015

# CONTENTS

<b>1. ORDERING INFORMATION</b> .....	04
1.1 Order Number .....	04
1.2 Optional Accessory List .....	04
1.3 Image .....	05
<b>2. SPECIFICATION</b> .....	06
2.1 Display Specification .....	06
2.2 Mechanical Specification .....	06
2.3 Electrical Specification .....	06
2.4 Optical Specification .....	06
<b>3. OUTLINE DRAWING</b> .....	07
3.1 Outline Drawing(FFC Connection & Resisitive Touch Panel) .....	07
3.2 Outline Drawing(Pin Header Connection & Resisitive Touch Panel)- .....	08
3.3 Outline Drawing(FFC Connection & Capacitive Touch Panel) .....	09
3.4 Outline Drawing(Pin Header Connection & Capacitive Touch Panel)- .....	10
<b>4. ELECTRICAL SPEC</b> .....	11
4.1 Pin Configuration-JP1/CON1 (Parallel/Serial Interface) .....	11
4.2 Pin Configuration –JP2 (RGB Interface) .....	12
4.3 Jump Point Description .....	13
4.4 Absolute Maximum Ratings .....	14
4.5 Electrical Characteristics .....	14
<b>5. INSPECTION CRITERIA</b> .....	15
5.1 Acceptable Quality Level .....	15
5.2 Definition of Lot .....	15
5.3 Condition of Cosmetic Inspection .....	15
5.4 Module Cosmetic Criteria .....	16
5.5 Screen Cosmetic Criteria (Non-Operating) .....	18
5.6 Screen Cosmetic Criteria (Operating) .....	19

<b>6. PRECAUTIONS FOR USING</b> .....	21
6.1 Handling Precautions .....	21
6.2 Power Supply Precautions .....	22
6.3 Operating Precautions .....	22
6.4 Mechanical/Environmental Precautions .....	22
6.5 Storage Precautions .....	22
6.6 Others .....	22
<b>7. USING LCD MODULES</b> .....	23
7.1 Liquid Crystal Display Modules .....	23
7.2 Installing LCD Modules .....	23
7.3 Precaution for Handling LCD Modules .....	23
7.4 Electro-Static Discharge Control .....	24
7.5 Precaution for Soldering to EastRising LCM .....	24
7.6 Precaution for Operation .....	25
7.7 Limited Warranty .....	25
7.8 Return Policy .....	25

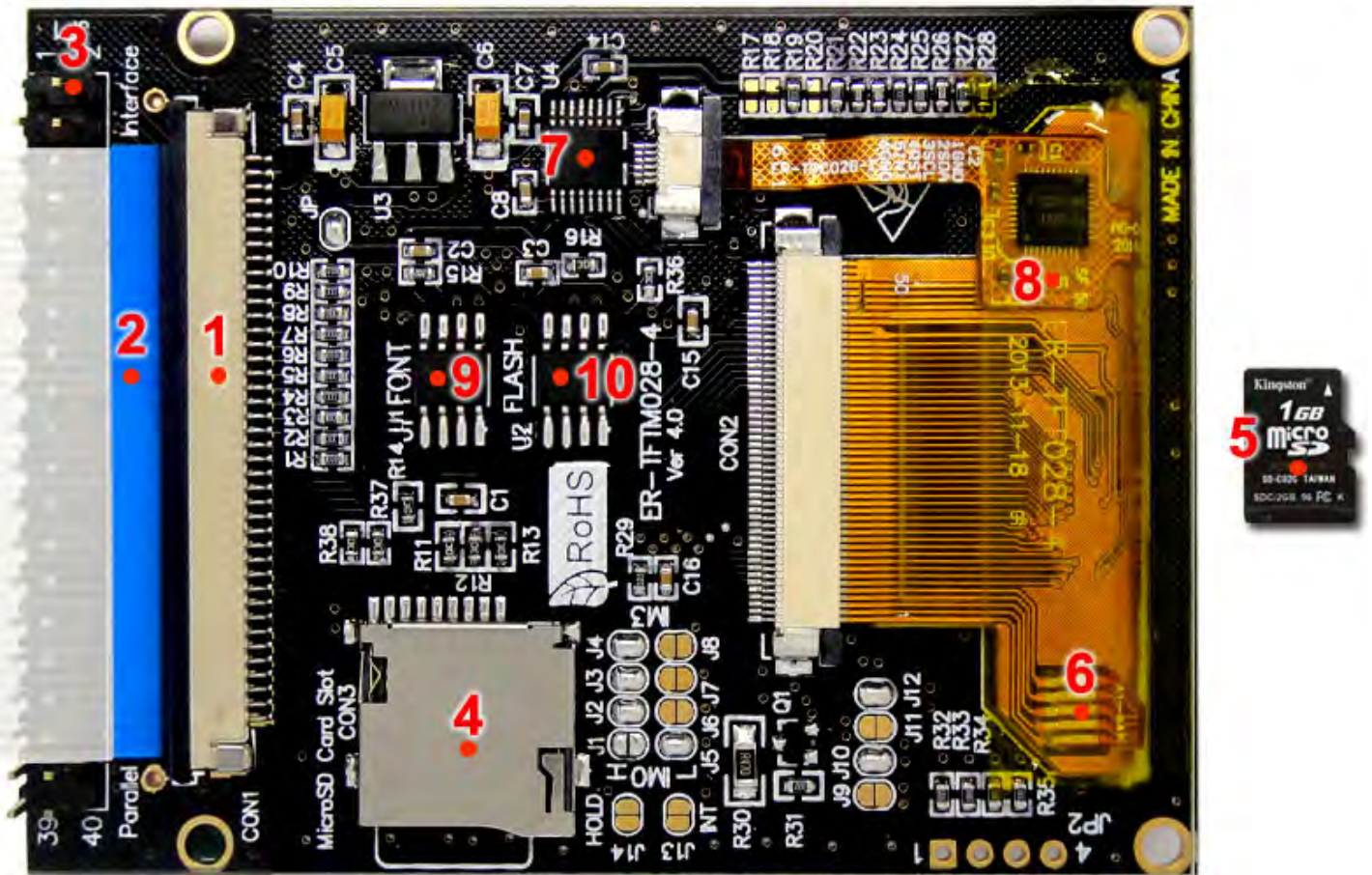
## 1. ORDERING INFORMATION

### 1.1 Order Number

Part Number(Order Number)	Description
ER-TFTM028-4	2.8 inch TFT LCD Display Module with adaptor board.
ER-DBTM028-4	8051 Microcontroller Development Board & Kit for ER-TFTM028-4

### 1.2 Optional Accessory List (We give customer's more freedom to build your own display)

No	Accessory for Parallel Interface	Qty	Position on Board
1	ZIF connector in 40 pins (1 piece is soldered on board, the another is used to connect customer's board)	2	CON1
2	FFC in 40 pins,100mm length,1.00mm pitch used to connect display with customer's board.	1	CON1
3	Pin Header in 40 pins	1	CON1
No	Accessory for MicroSD Card Interface	Qty	Position on Board
4	Micro SD Card Slot(Mounting on board by default)	1	MicroSD Card Slot
5	1GB MicroSD Card (Not mounting on board by default)	1	N/A
No	Accessory for Resistive Touch Panel	Qty	Position on Board
6	2.8 inch 4-wire resistive touch panel (Mounting on board by default)	1	N/A
7	Touch Panel Controller	1	U4
No	Accessory for Resistive Touch Panel	Qty	Position on Board
8	2.8 inch capacitive touch panel with FT6206 controller (Mounting on board by default)	1	N/A
No	Other Accessory	Qty	Position on Board
9	Font Chip (Mounting on board by default)	1	U1
10	Flash Memory Chip (Not mounting on board by default)	1	U8



ER-TFTM028-4 with Resistive Touch Panel ↑



ER-TFTM028-4 with Capacitive Touch Panel ↑

## 2. SPECIFICATION

### 2.1 Display Specification

ITEM	STANDARD VALUE	UNIT
Display Format	240 (RGB) x 320 Dots	--
Display Connector	FFC or Pin Header	--
FPC Connector	40 Pins, 1.0mm Pitch, SMD Horizontal Type Top contact	--
Operating Temperature	-20 ~ +70	°C
Storage Temperature	-30 ~ +80	°C
Touch Panel Optional	Yes	--
Sunlight Readable	No	--

### 2.2 Mechanical Specification

ITEM	STANDARD VALUE	UNIT
Diagonal Size	2.8	inch
Outline Dimension(PCB)	60.0×81.0	mm
Active Area	43.2×57.6	mm
Dot Pitch	0.18(W) x 0.18(H)	mm
Gross Weight	0.07	kg

### 2.3 Electrical Specification

ITEM	STANDARD VALUE	UNIT
IC Package	SMT+COG	--
Controller	ILI9341	--
Interface	8080 8-bit /9-bit/16-bit /18-bit Parallel 3/4-Wire SPI, RGB.	--
Response Time (Typ)	25	ms

### 2.4 Optical Specification

ITEM	STANDARD VALUE	UNIT
LCD Type	TFT-LCD / Transmissive / Positive	--
Viewing Angle Range	Left:70, Right:70, Up:70, Down:57	deg
Colors	65K/262K	--
Contrast Ratio (Typ)	500:1	--
Brightness (Typ)	350	cd/m2

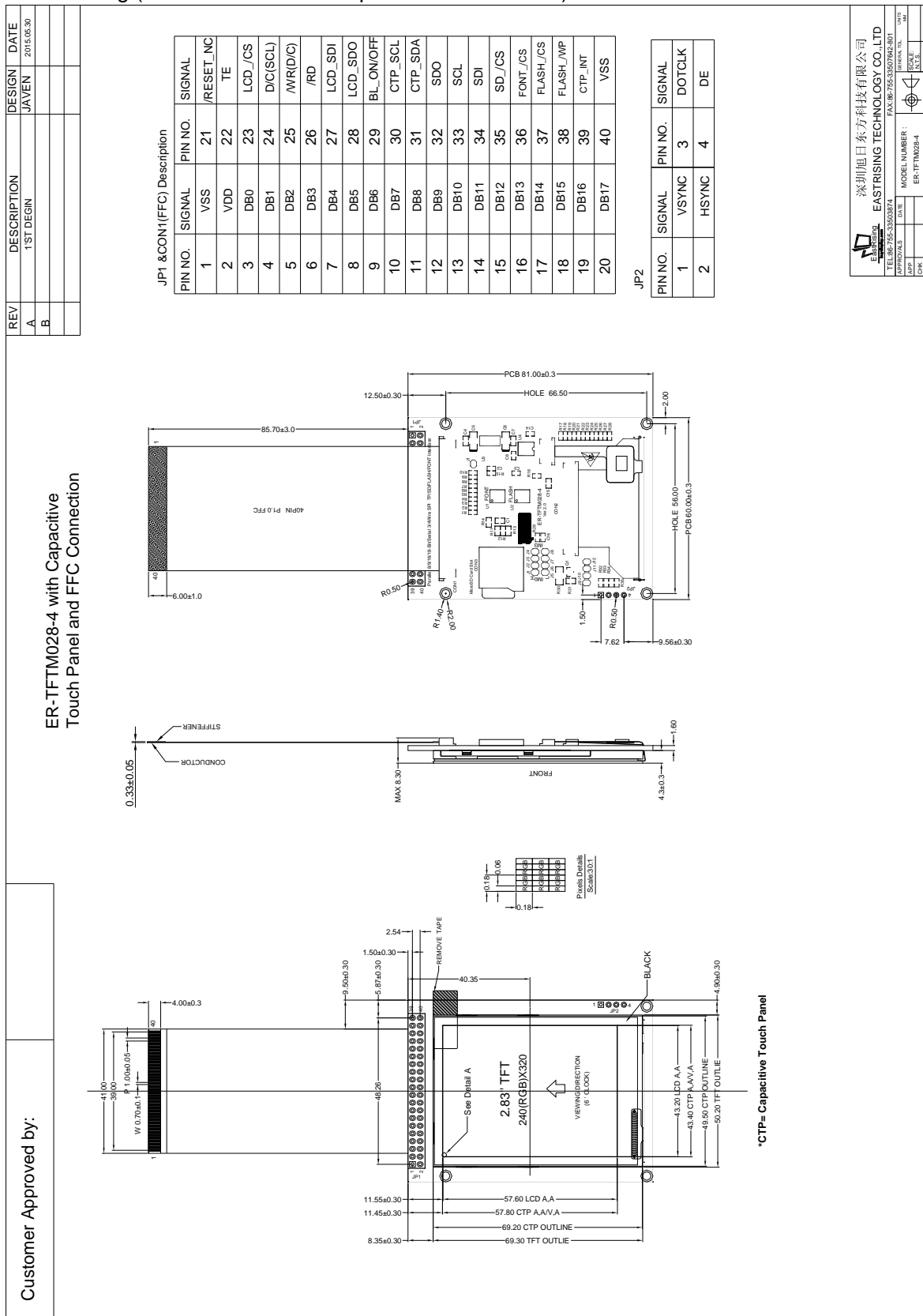








## 3.3 Outline Drawing (FFC Connection & Capacitive Touch Panel)



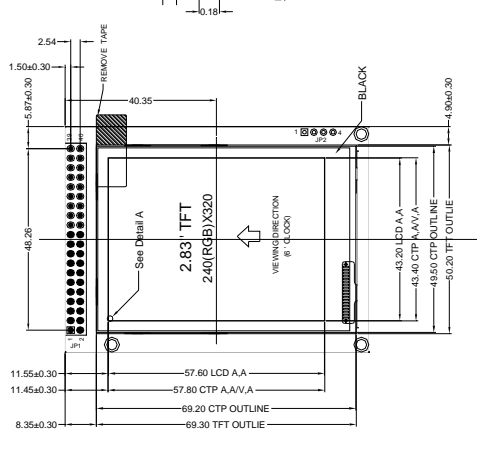
## 3.4 Outline Drawing (Pin Header Connection & Capacitive Touch Panel)

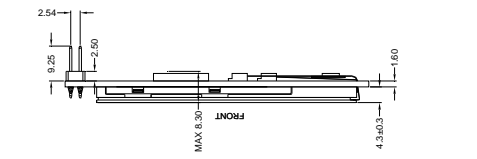
Customer Approved by:

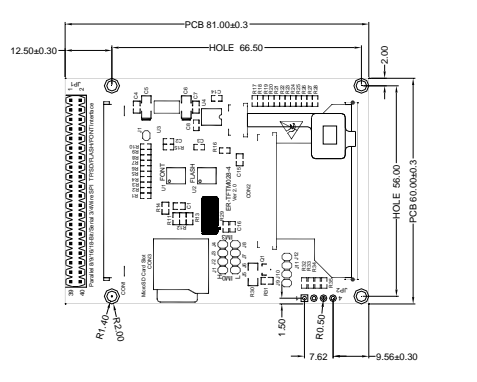
ER-TFTM028-4 with Capacitive Touch Panel and Pin Header Connection

REV	DESCRIPTION	DESIGN	DATE
A	1ST DESIGN	JAVEN	2016.05.30
B			








  

JP1 & CON1 (FFC) Description

PIN NO.	SIGNAL	PIN NO.	SIGNAL
1	VSS	21	/RESET_NC
2	VDD	22	TE
3	DB0	23	LCD_CS
4	DB1	24	D/C(SCL)
5	DB2	25	/WR(D/C)
6	DB3	26	/RD
7	DB4	27	LCD_SDI
8	DB5	28	LCD_SDO
9	DB6	29	BL_ON/OFF
10	DB7	30	CTP_SCL
11	DB8	31	CTP_SDA
12	DB9	32	SDO
13	DB10	33	SCL
14	DB11	34	SDI
15	DB12	35	SD_CS
16	DB13	36	FONT_CS
17	DB14	37	FLASH_CS
18	DB15	38	FLASH_W/P
19	DB16	39	CTP_INT
20	DB17	40	VSS

JP2

PIN NO.	SIGNAL	PIN NO.	SIGNAL
1	VSYNC	3	DOTCLK
2	HSYNC	4	DE



深圳旭日东方科技有限公司  
EASTRISING TECHNOLOGY CO., LTD  
TEL: 86-755-53003874 FAX: 86-755-53007802-801  
DATE: MODEL NUMBER: ER-TFTM028-4 ORIGINAL NO.:  
APPROVALS: DRAWN: J.M. 150630 CHECKED: SCALE: DRAWING: PRODUCTION SHEET: 1

## 4. ELECTRICAL SPEC

### 4.1 Pin Configuration-JP1/CON1 (Parallel/Serial Interface)

Pin No	Symbol	Descriptions
1	VSS	Ground
2	VDD	Power Supply
3-20	DB0-DB17	18-Bit Parallel Bi-Directional Data Bus. No connection when not in use
21	/RESET_NC	Master synchronizes reset, Active Low. RC reset on board. No connection when not in use
22	TE	Tearing effect output pin to synchronize MPU to frame writing. No connection when not in use
23	LCD_/CS	LCD chip select input pin ("Low" enable).
24	D/C(SCL)	This pin is used to select "Data or Command" in the parallel interface When DCX = '1', data is selected. When DCX = '0', command is selected. This pin is used serial interface clock in 3-wire 9-bit / 4-wire 8-bit serial data interface. No connection when not in use
25	/WR(D/C)	Parallel interface: Serves as a write signal and writes data at the rising edge. 4-line interface: Serves as command or parameter select. No connection when not in use
26	/RD	Parallel interface: Serves as a read signal and MCU read data at the rising edge. No connection when not in use
27	LCD_SDI	serial interface I: Serial in/out signal. serial interface II: High, Serial input signal. The data is applied on the rising edge of the SCL signal. No connection when not in use
28	LCD_SDO	Serial output signal. The data is outputted on the falling edge of the SCL signal. No connection when not in use
29	BL_ON/OFF	Backlight control input. Low: OFF High: ON
30	RTP_/CS	Resistive touch screens: chip select input pin ("Low" enable).
	CTP_SCL	Capacitive touch screen : Serial colock input (I2C)
31	RTP_PEN	Resistive touch screens: chip select input pin ("Low" enable).
	CTN_SDA	Capacitive touch screen : Serial data input/output (I2C)
32	SDO	Serial signal output. (RTP,SD,FLASH,FONT)

33	SCL	Serial clock signal input (RTP,SD CARD,FLASH,FONT)
34	SDI	Serial signal input. (RTP,SD CARD,LASH,FONT)
35	SD_/CS	SD card chip select input pin ("Low" enable).
36	FONT_/CS	Font chip select input pin ("Low" enable).
37	FLASH_/CS	Flash memory chip select input pin ("Low" enable).
38	FLASH_/WP	Write Protect Input. Low active.
39	FLASH_/HOLD	Flash hold Input. Low active. J14 Short and J13 Open.
	CTP_INT	Capacitive touch screen the interrupt signal. Low active. J13 Short and J14 Open.
40	VSS	Ground

#### 4.2 Pin Configuration –JP2 (RGB Interface)

Pin No	Symbol	Descriptions
1	VSYNC	Frame synchronizing signal for RGB interface operation. No connection when not in use
2	HSYNC	Line synchronizing signal for RGB interface operation. No connection when not in use
3	DOTCLK	Dot clock signal for RGB interface operation. No connection when not in use
4	DE	Data enable signal for RGB interface operation. No connection when not in use

4.3 Jump Point Description

Function Description	Jump Method
Power Supply Switch	JP Open: VDD=5V / JP Short: VDD=3.3V
8080-8bit Interface	J5-J8 Short and J1-J4 Open. R1-R10=0R,R20=0R. R17-R19 and R21-R28 not soldering.
8080-9bit Interface	J2,J5,J7,J8 Short and J1,J3,J4,J6 Open R1-R9=0R,R20=0R. R10,R17-R19 and R21-R28 not soldering.
8080-16bit Interface	J1,J6,J7,J8 Short and J2,J3,J4,J5 Open. R1,R2=0R,R20=0R. R3-R10,R17-R19,R21-R28 not soldering.
8080-18bit Interface	J1,J2,J7,J8 Short and J3,J4,J5,J6 Open. R20=0R. R1-R10,R17-R19,R21-R28 not soldering.
3-wire SPI Interface	J1,J3,J4,J6 Short and J2,J5,J7,J8 Open. R1-R10=0R, R18=0R,R19=0R,R21-R28=0R. R17,R20 not soldering.
4-wire SPI Interface	J2,J3,J4,J5 Short and J1,J6,J7,J8 Open. R1-R10=0R,R19=0R,R21-R28=0R. R17,R18,R20 not soldering.
RGB Interface	J2,J3,J4,J5 Short and J1,J6,J7,J8 Open. R19=0R, R1-R10,R17,R18,R20-R28,R32,R33,R34,R35 not soldering.
Backlight Control	J10,J12 Short and J9,J11 Open. PIN 29 is backlight control signal input, high: on/low : off J9,J11 Short and J10,J12 Open. PIN 29 is backlight power input. F:3.2V IF: 80mA

Note: We set up 3.3v power supply and 8080-16bit interface by default.

4.4 Absolute Maximum Ratings

ITEM	SYMBOL	MIN.	TYP.	MAX.	UNIT
Power Supply Voltage	VDD	-0.5	-	+5.5	V
Logic Signal Voltage	VDDIO	-0.5	-	+3.3	V
Operating Temperature	Top	-20	-	+70	° C
Storage Temperature	TST	-30	-	+80	° C
Humidity	RH	-		90%(Max60° C)	RH

4.5 Electrical Characteristics

ITEM	SYMBOL	MIN.	TYP.	MAX.	UNIT
Power Supply Voltage	VDD	--	3.3	3.6	V
		4.8	5.0	5.2	V
Logic Signal I/O Voltage	VDDIO	3.0	3.3	3.6	V
Input Voltage 'H' Level	VIH	0.87VDDIO	-	VDDIO	V
Input Voltage 'L' Level	VIL	Vss	-	0.3VDDIO	V
Output Voltage 'H' Level	VOH	0.8VDDIO	-	VDDIO	V
Output Voltage 'L' Level	VCL	Vss	-	0.2VDDIO	V
Module Current	IDD(3.3V)	--	85	100	mA
	IDD(5.0V)	--	85	100	mA

## 5. INSPECTION CRITERIA

### 5.1 Acceptable Quality Level

Each lot should satisfy the quality level defined as follows

<b>PARTITION</b>	<b>AQL</b>	<b>DEFINITION</b>
A. Major	0.4%	Functional defective as product
B. Minor	1.5%	Satisfy all functions as product but not satisfy cosmetic stanard

### 5.2 Definition of Lot

One lot means the delivery quantity to customer at one time.

### 5.3 Condition of Cosmetic Inspection

#### ◆ INSPECTION AND TEST

- FUNCTION TEST
- APPEARANCE INSPECTION
- PACKING SPECIFICATION

#### ◆ INSPECTION CONDITION

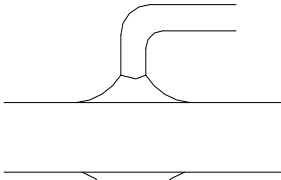
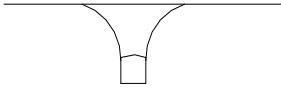
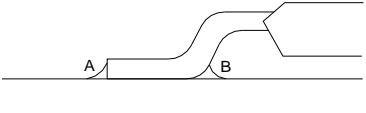
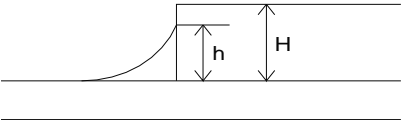
- Put under the lamp (20W) at a distance 100mm from
- Tilt upright 45 degree by the front (back) to inspect LCD appearance.

#### ◆ AQL INSPECTION LEVEL

- SAMPLING METHOD: MIL-STD-105D
- SAMPLING PLAN: SINGLE
- MAJOR DEFECT: 0.4% (MAJOR)
- MINOR DEFECT: 1.5% (MINOR)
- GENERAL LEVEL: II/NORMAL



5.4 Module Cosmetic Criteria

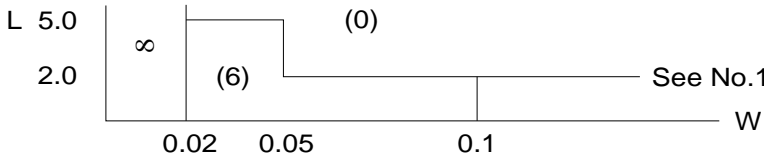
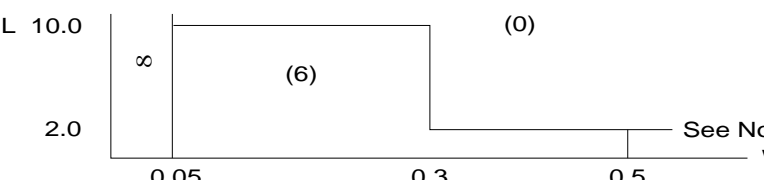
NO.	Item	Judgment Criterion	Partition
1	Difference in Spec.	None allowed	Major
2	Pattern Peeling	No substrate pattern peeling and floating	Major
3	Soldering defects	No soldering missing	Major
		No soldering bridge	Major
		No cold soldering	Minor
4	Resist flaw on substrate	Invisible copper foil( $\varnothing$ 0.5mm or more)on substrate pattern	Minor
5	Accretion of metallic Foreign matter	No soldering dust	Minor
		No accretion of metallic foreign matters(Not exceed $\varnothing$ 0.2mm)	
6	Stain	No stain to spoil cosmetic badly	Minor
7	Plate discoloring	No plate fading,rusting and discoloring	Minor
8	Solder amount  1.Lead parts	<p>a. Soldering side of PCB</p> <p>Solder to form a 'Filet' all around the lead. Solder should not hide the lead form perfectly.(too much)</p>  <p>b.Components side (In case of 'Through Hole PCB')</p> <p>Solder to reach the Components side of PCB</p> 	Minor
	2.Flat packages	<p>Either 'toe'(A) or 'heel' (B) of the lead to be covered by 'Filet'</p>  <p>Lead form to be assume over Solder.</p>	Minor
	3.Chips	<p><math>(3/2) H \cong h \cong (1/2)H</math></p> 	Minor

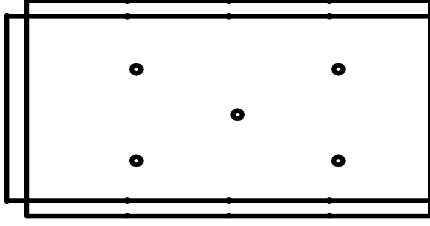
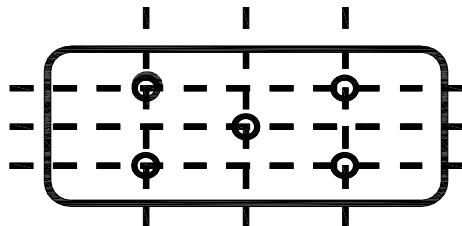
9	Backlight defects	<ol style="list-style-type: none"> <li>1.Light fails or flickers.(Major)</li> <li>2. Color and luminance do not correspond to specifications. (Major)</li> <li>3.Exceeds standards for display's blemishes, foreign matter, dark lines or scratches.(Minor)</li> </ol>	<p>See list ←</p>
10	PCB defects	<ol style="list-style-type: none"> <li>1. Oxidation or contamination on connectors.*</li> <li>2. Wrong parts, missing parts, or parts not in specification.*</li> <li>3.Jumpers set incorrectly.(Minor)</li> <li>4.Solder(if any)on bezel,LED pad,zebra pad,or screw hole pad is not smooth.(Minor)</li> </ol> <p>*Minor if display functions correctly.Major if the display fails.</p>	<p>See list ←</p>
11	Soldering defects	<ol style="list-style-type: none"> <li>1. Unmelted solder paste.</li> <li>2. Cold solder joints,missing solder connections,or oxidation.*</li> <li>3. Solder bridges causing short circuits.*</li> <li>4. Residue or solder balls.</li> <li>5. Solder flux is black or brown.</li> </ol> <p>*Minor if display functions correctly.Major if the display fails.</p>	<p>Minor</p>

5.5 Screen Cosmetic Criteria (Non-Operating)

No.	Defect	Judgment Criterion	Partition		
1	Spots	In accordance with Screen Cosmetic Criteria (Operating) No.1.	Minor		
2	Lines	In accordance with Screen Cosmetic Criteria (Operation) No.2.	Minor		
3	Bubbles Polarizer	in	Minor		
				Size: d mm	Acceptable Qty in active area
				d ≤ 0.3	Disregard
				0.3 < d ≤ 1.0	3
1.0 < d ≤ 1.5	1				
1.5 < d	0				
4	Scratch	In accordance with spots and lines operating cosmetic criteria, When the light reflects on the panel surface, the scratches are not to be remarkable.	Minor		
5	Allowable density	Above defects should be separated more than 30mm each other.	Minor		
6	Coloration	Not to be noticeable coloration in the viewing area of the LCD panels. Back-lit type should be judged with back-lit on state only.	Minor		
7	Contamination	Not to be noticeable.	Minor		

5.6 Screen Cosmetic Criteria (Operating)

No.	Defect	Judgment Criterion	Partition								
1	Spots	A) Clear	Minor								
		<table border="1" style="width:100%; border-collapse: collapse;"> <tr> <th style="width:50%;">Size:d mm</th> <th style="width:50%;">Acceptable Qty in active area</th> </tr> </table>		Size:d mm	Acceptable Qty in active area						
		Size:d mm		Acceptable Qty in active area							
		<table border="1" style="width:100%; border-collapse: collapse;"> <tr> <td style="width:50%; text-align: center;"><math>d \leq 0.1</math></td> <td style="width:50%; text-align: center;">Disregard</td> </tr> <tr> <td style="text-align: center;"><math>0.1 &lt; d \leq 0.2</math></td> <td style="text-align: center;">6</td> </tr> <tr> <td style="text-align: center;"><math>0.2 &lt; d \leq 0.3</math></td> <td style="text-align: center;">2</td> </tr> <tr> <td style="text-align: center;"><math>0.3 &lt; d</math></td> <td style="text-align: center;">0</td> </tr> </table>		$d \leq 0.1$	Disregard	$0.1 < d \leq 0.2$	6	$0.2 < d \leq 0.3$	2	$0.3 < d$	0
		$d \leq 0.1$		Disregard							
		$0.1 < d \leq 0.2$		6							
$0.2 < d \leq 0.3$	2										
$0.3 < d$	0										
<p>Note: Including pin holes and defective dots which must be within one pixel Size.</p>											
B) Unclear	Minor										
<table border="1" style="width:100%; border-collapse: collapse;"> <tr> <th style="width:50%;">Size:d mm</th> <th style="width:50%;">Acceptable Qty in active area</th> </tr> </table>		Size:d mm	Acceptable Qty in active area								
Size:d mm		Acceptable Qty in active area									
<table border="1" style="width:100%; border-collapse: collapse;"> <tr> <td style="width:50%; text-align: center;"><math>d \leq 0.2</math></td> <td style="width:50%; text-align: center;">Disregard</td> </tr> <tr> <td style="text-align: center;"><math>0.2 &lt; d \leq 0.5</math></td> <td style="text-align: center;">6</td> </tr> <tr> <td style="text-align: center;"><math>0.5 &lt; d \leq 0.7</math></td> <td style="text-align: center;">2</td> </tr> <tr> <td style="text-align: center;"><math>0.7 &lt; d</math></td> <td style="text-align: center;">0</td> </tr> </table>		$d \leq 0.2$	Disregard	$0.2 < d \leq 0.5$	6	$0.5 < d \leq 0.7$	2	$0.7 < d$	0		
$d \leq 0.2$		Disregard									
$0.2 < d \leq 0.5$		6									
$0.5 < d \leq 0.7$	2										
$0.7 < d$	0										
2	Lines	A) Clear	Minor								
		 <p>Note: ( ) – Acceptable Qty in active area L - Length (mm) W -Width(mm) ∞-Disregard</p>									
		B) Unclear									
											
<p>'Clear' = The shade and size are not changed by Vo. 'Unclear' = The shade and size are changed by Vo.</p>											

No.	Defect	Judgment Criterion	Partition
3	Rubbing line	Not to be noticeable.	
4	Allowable density	Above defects should be separated more than 10mm each other.	Minor
5	Rainbow	Not to be noticeable.	Minor
6	Dot size	To be 95%~105%of the dot size (Typ.) in drawing. Partial defects of each dot (ex.pin-hole) should be treated as'spot'. (see Screen Cosmetic Criteria (Operating) No.1)	Minor
7	Brightness (only back-lit Module)	Brightness Uniformity must be $B_{MAX}/B_{MIN} \leq 2$ - $B_{MAX}$ :Max.value by measure in 5 points - $B_{MIN}$ : Min.value by measure in 5 points Divide active area into 4 vertically and horizontally. Measure 5 points shown in the following figure. 	Minor
8	Contrast Uniformity	Contrast Uniformity must be $B_{mAX}/B_{mIN} \leq 2$ Measure 5 points shown in the following figure. Dashed lines divide active area into 4 vertically and horizontally. Measuring points are located at the inter-sections of dashed line.  Note: $B_{MAX}$ – Max.value by measure in 5 points. $B_{MIN}$ – Min.value by measure in 5 points. O – Measuring points in $\varnothing 10mm$ .	Minor

**Note:**

- (1) Size :  $d=(\text{long length} + \text{short length})/2$
- (2) The limit samples for each item have priority.
- (3) Complexed defects are defined item by item, but if the number of defects is defined in above table, the total number should not exceed 10.

(4) In case of 'concentration', even the spots or the lines of 'disregarded' size should not be allowed. Following three situations

Should be treated as 'concentration'.

- 7 or over defects in circle of  $\varnothing$  5mm.
- 10 or over defects in circle of  $\varnothing$  10mm
- 20 or over defects in circle of  $\varnothing$  20mm

## 6. PRECAUTIONS FOR USING

### 6.1 Handling Precautions

- ◆ This device is susceptible to Electro-Static Discharge (ESD) damage. Observe Anti-Static precautions.
- ◆ EastRising display panel is made of glass. Do not subject it to a mechanical shock by dropping it or impact.
- ◆ If EastRising display panel is damaged and the liquid crystal substance leaks out, be sure not to get any in your mouth. If the substance contacts your skin or clothes, wash it off using soap and water.
- ◆ Do not apply excessive force to the EastRising display surface or the adjoining areas since this may cause the color tone to vary.
- ◆ The polarizer covering the EastRising display surface of the LCD module is soft and easily scratched. Handle this polarizer carefully.
- ◆ If EastRising display surface becomes contaminated, breathe on the surface and gently wipe it with a soft dry cloth. If it is heavily contaminated, moisten cloth with one of the following Isopropyl or alcohol.
- ◆ Solvents other than those above-mentioned may damage the polarizer. Especially, do not use the Water.
- ◆ Exercise care to minimize corrosion of the electrode. Corrosion of the electrodes is accelerated by water droplets, moisture condensation or a current flow in a high-humidity environment.
- ◆ Install the EastRising LCD Module by using the mounting holes. When mounting the LCD module make sure it is free of twisting, warping and distortion. In particular, do not forcibly pull or bend the cable or the backlight cable.
- ◆ Do not attempt to disassemble or process EastRising LCD module.
- ◆ NC terminal should be open. Do not connect anything.
- ◆ If the logic circuit power is off, do not apply the input signals.
- ◆ To prevent destruction of the elements by static electricity, be careful to maintain an optimum work environment.
  - Be sure to ground the body when handling EastRising LCD modules.
  - Tools required for assembling, such as soldering irons, must be properly grounded.
  - To reduce the amount of static electricity generated, do not conduct assembling and other work under dry conditions.
  - The LCD module is coated with a film to protect the display surface. Exercise care when peeling off this protective film since static electricity may be generated.

### 6.2 Power Supply Precautions

- ◆ Identify and, at all times, observe absolute maximum ratings for both logic and LC drivers. Note that there is some variance between models.
- ◆ Prevent the application of reverse polarity to VDD and VSS, however briefly.
- ◆ Use a clean power source free from transients. Power-up conditions are occasionally jolting and may exceed the maximum ratings of EastRising modules.
- ◆ The VDD power of EastRising module should also supply the power to all devices that may access the display. Don't allow the data bus to be driven when the logic supply to the module is turned off.

### 6.3 Operating Precautions

- ◆ DO NOT plug or unplug EastRising module when the system is powered up.
- ◆ Minimize the cable length between EastRising module and host MPU.
- ◆ For models with backlights, do not disable the backlight by interrupting the HV line. Unload inverters produce voltage extremes that may arc within a cable or at the display.
- ◆ Operate EastRising module within the limits of the modules temperature specifications.

### 6.4 Mechanical/Environmental Precautions

- ◆ Improper soldering is the major cause of module difficulty. Use of flux cleaner is not recommended as they may seep under the electrometric connection and cause display failure.
- ◆ Mount EastRising module so that it is free from torque and mechanical stress.
- ◆ Surface of the LCD panel should not be touched or scratched. The display front surface is an easily scratched, plastic polarizer. Avoid contact and clean only when necessary with soft, absorbent cotton dampened with petroleum benzene.
- ◆ Always employ anti-static procedure while handling EastRising module.
- ◆ Prevent moisture build-up upon the module and observe the environmental constraints for storage tem
- ◆ Do not store in direct sunlight
- ◆ If leakage of the liquid crystal material should occur, avoid contact with this material, particularly ingestion. If the body or clothing becomes contaminated by the liquid crystal material, wash thoroughly with water and soap

### 6.5 Storage Precautions

When storing the LCD modules, avoid exposure to direct sunlight or to the light of fluorescent lamps. Keep EastRising modules in bags (avoid high temperature / high humidity and low temperatures below 0C Whenever possible, EastRising LCD modules should be stored in the same conditions in which they were shipped from our company.

### 6.6 Others

Liquid crystals solidify under low temperature (below the storage temperature range) leading to defective orientation or the generation of air bubbles (black or white). Air bubbles may also be generated if the module is subject to a low temperature.

If EastRising LCD modules have been operating for a long time showing the same display patterns, the



display patterns may remain on the screen as ghost images and a slight contrast irregularity may also appear. A normal operating status can be regained by suspending use for some time. It should be noted that this phenomenon does not adversely affect performance reliability.

To minimize the performance degradation of the LCD modules resulting from destruction caused by static electricity etc., exercise care to avoid holding the following sections when handling the modules.

- Exposed area of the printed circuit board.
- Terminal electrode sections.

## **7. USING LCD MODULES**

### 7.1 Liquid Crystal Display Modules

EastRising LCD is composed of glass and polarizer. Pay attention to the following items when handling.

- ◆ Please keep the temperature within specified range for use and storage. Polarization degradation, bubble generation or polarizer peel-off may occur with high temperature and high humidity.
- ◆ Do not touch, push or rub the exposed polarizers with anything harder than an HB pencil lead (glass, tweezers, etc.).
- ◆ N-hexane is recommended for cleaning the adhesives used to attach front/rear polarizers and reflectors made of organic substances which will be damaged by chemicals such as acetone, toluene, ethanol and isopropylalcohol.
- ◆ When EastRising display surface becomes dusty, wipe gently with absorbent cotton or other soft material like chamois soaked in petroleum benzin. Do not scrub hard to avoid damaging the display surface.
- ◆ Wipe off saliva or water drops immediately, contact with water over a long period of time may cause deformation or color fading.
- ◆ Avoid contacting oil and fats.
- ◆ Condensation on the surface and contact with terminals due to cold will damage, stain or dirty the polarizers. After products are tested at low temperature they must be warmed up in a container before coming in contact with room temperature air.
- ◆ Do not put or attach anything on EastRising display area to avoid leaving marks on.
- ◆ Do not touch the display with bare hands. This will stain the display area and degrade insulation between terminals (some cosmetics are determined to the polarizers).
- ◆ As glass is fragile. It tends to become or chipped during handling especially on the edges. Please avoid dropping or jarring.

### 7.2 Installing LCD Modules

- ◆ Cover the surface with a transparent protective plate to protect the polarizer and LC cell.
- ◆ When assembling the LCM into other equipment, the spacer to the bit between the LCM and the fitting plate should have enough height to avoid causing stress to the module surface, refer to the individual specifications for measurements. The measurement tolerance should be  $\pm 0.1$ mm.

### 7.3 Precaution for Handling LCD Modules

Since EastRising LCM has been assembled and adjusted with a high degree of precision; avoid applying excessive shocks to the module or making any alterations or modifications to it.

- ◆ Do not alter, modify or change the shape of the tab on the metal frame.
- ◆ Do not make extra holes on the printed circuit board, modify its shape or change the positions of components to be attached.
- ◆ Do not damage or modify the pattern writing on the printed circuit board.
- ◆ Absolutely do not modify the zebra rubber strip (conductive rubber) or heat seal connector.
- ◆ Except for soldering the interface, do not make any alterations or modifications with a soldering iron.
- ◆ Do not drop, bend or twist EastRising LCM.

### 7.4 Electro-Static Discharge Control

Since this module uses a CMOS LSI, the same careful attention should be paid to electrostatic discharge as for an ordinary CMOS IC.

- ◆ Make certain that you are grounded when handing LCM.
- ◆ Before remove LCM from its packing case or incorporating it into a set, be sure the module and your body have the same electric potential.
- ◆ When soldering the terminal of LCM, make certain the AC power source for the soldering iron does not leak.
- ◆ When using an electric screwdriver to attach LCM, the screwdriver should be of ground potentiality to minimize as much as possible any transmission of electromagnetic waves produced sparks coming from the commutator of the motor.
- ◆ As far as possible make the electric potential of your work clothes and that of the work bench the ground potential.
- ◆ To reduce the generation of static electricity be careful that the air in the work is not too dried. A relative humidity of 50%-60% is recommended.

### 7.5 Precaution for Soldering to EastRising LCM

- ◆ Observe the following when soldering lead wire, connector cable and etc. to the LCM.

-Soldering iron temperature :  $280^{\circ}\text{C} \pm 10^{\circ}\text{C}$

-Soldering time: 3-4 sec.

-Solder: eutectic solder.

If soldering flux is used, be sure to remove any remaining flux after finishing to soldering operation. (This does not apply in the case of a non-halogen type of flux.) It is recommended that you protect the LCD surface with a cover during soldering to prevent any damage due to flux spatters.

- ◆ When soldering the electroluminescent panel and PC board, the panel and board should not be detached more than three times. This maximum number is determined by the temperature and time conditions mentioned above, though there may be some variance depending on the temperature of the soldering iron.
- ◆ When remove the electroluminescent panel from the PC board, be sure the solder has completely melted, the soldered pad on the PC board could be damaged.

#### 7.6 Precaution for Operation

- ◆ Viewing angle varies with the change of liquid crystal driving voltage (VO). Adjust VO to show the best contrast.
- ◆ Driving the EastRising LCD in the voltage above the limit shortens its life.
- ◆ Response time is greatly delayed at temperature below the operating temperature range. However, this does not mean the LCD will be out of the order. It will recover when it returns to the specified temperature range.
- ◆ If EastRising display area is pushed hard during operation, the display will become abnormal. However, it will return to normal if it is turned off and then back on.
- ◆ Condensation on terminals can cause an electrochemical reaction disrupting the terminal circuit. Therefore, it must be used under the relative condition of 40°C, 50% RH.
- ◆ When turning the power on, input each signal after the positive/negative voltage becomes stable.

#### 7.7 Limited Warranty

Unless agreed between EastRising and customer, EastRising will replace or repair any of its LCD modules which are found to be functionally defective when inspected in accordance with EastRising LCD acceptance standards (copies available upon request) for a period of one year from date of shipments. Cosmetic/visual defects must be returned to EastRising within 90 days of shipment. Confirmation of such date shall be based on freight documents. The warranty liability of EastRising limited to repair and/or replacement on the terms set forth above. EastRising will not be responsible for any subsequent or consequential events.

#### 7.8 Return Policy

No warranty can be granted if the precautions stated above have been disregarded. The typical examples of violations are:

- Broken lcd glass.
- PCB eyelet damaged or modified.
- PCB conductors damaged.
- Circuit modified in any way, including addition of components.
- PCB tampered with by grinding, engraving or painting varnish.
- Soldering to or modifying the bezel in any manner.

Module repairs will be invoiced to the customer upon mutual agreement. Modules must be returned with sufficient description of the failures or defects. Any connectors or cable installed by the customer must be removed completely without damaging the PCB eyelet's, conductors and terminals

**That's the end of the datasheet**