



**ELMO Mfg. Corp.**  
 1478 Old Country Road  
 Plainview, NY 11803

***ELECTRONIC IMAGING DIVISION  
 LIST PRICE BOOK***

***EFFECTIVE JUNE 29, 2004***

***TABLE OF CONTENTS***

*Terms and Conditions of Sale, Warranty Information.....ii*  
*Digital Visual Presenters..... 1-4*  
*Digital Ceiling Presenter.....5*  
*Digital Slide Film Presenter.....6*  
*Analog Visual Presenters..... 7-8*  
*Multi-Functional Opaque LCD Projectors.....9*  
*Analog Film to Video Converters ..... 10*  
*Pan-Tilt-Zoom Communication Cameras..... 11-12*  
*Built-In CCU Color Micro Camera ..... 13*  
*Overhead Projectors & 16mm Sound Projector Accessories ..... 14-15*  
*Omnigraphic Professional Slide Projectors ..... 16*  
*Omnigraphic Flat-Field Projection Lenses .....17*  
*Lamp Replacement Guide..... 18-19*  
*Literature Request Form.....Inside Back Cover*

*New York Phone (Toll Free).....1-800-947-ELMO*  
*New York Phone.....(516) 501-1400*  
*New York Order Fax (Toll Free).....1-877-777-1094*

*e-mail.....elmo@elmousa.com*  
*Website.....www.elmousa.com*

# ELMO TERMS & CONDITIONS OF SALE

## TERMS

All merchandise is sold F.O.B point of shipment. Title to merchandise and responsibility for loss or damage transfers to purchaser upon delivery to the carrier. ELMO will assist dealer in processing claims with the carrier.

The net prices in this Price List are available to authorized ELMO dealers / distributors only. Payment terms are:

2% 10 days, net 30 days from date of invoice excluding credit card orders. (Payment is due net the 30th day from date of invoice. A 2% cash discount, excluding freight, will be allowed if remittance is postmarked on or before the 10th day from the date of the invoice.)

The purchaser grants ELMO MFG a security interest in all the above described merchandise until the invoice is paid in full. A 2% fee will be added to the balance of the past due invoice.

## MINIMUM

### ORDER REQUIREMENTS

Orders totaling less than \$50.00 at dealer cost will be subject to a \$5.00 handling charge. Certain items carry a minimum quantity requirement. An order for less than the minimum quantity of these items will be filled with the minimum quantity, and dealer will be invoiced for such minimum quantity.

### SHIPPING POLICY

Orders over \$2,500.00 calling for one shipment to one destination within 48 continental states will be shipped freight pre-paid by ELMO.

all orders under \$2,500.00 will be shipped freight pre-paid by ELMO and the actual shipping costs will be added to the invoice as transportation expense. Carrier selection is at ELMO's discretion.

Dealers are responsible for shipping charges when returning products to ELMO for repair/replacement or credit. ELMO will pay standard surface shipping charges on product repaired and returned to the dealer.

## INSURANCE

Responsibility to insure shipments rests with the purchaser. At purchaser's option, ELMO will prepay insurance costs and add this amount to the invoice as insurance expense. ELMO policy requires that all purchase orders & requests for RMA's be received in written form. No verbal request will be accepted.

## RETURNS POLICY

"Under no circumstances will product returns be accepted at ELMO without an authorized RMA number appearing on the shipping label. Returned goods failing to have an ELMO authorized RMA number on the outside of the shipping carton will be refused and returned to sender". All goods with an approved ELMO RMA number must also include a copy of the ELMO invoice for the product returned. Goods returned with an approved RMA number are subject to an incoming inspection by ELMO Service Personnel. Merchandise must be returned in its original packaging in new and unused condition including all accessories, cables, owner's manual and warranty card. Products that do not comply with this provision will be rejected and returned to sender, freight prepaid and invoiced to the dealer. All new and unused products authorized for an RMA number and passing an incoming inspection process are subject to a 15% restocking and handling charge. (DOA & Defective Products excluded)

## DEFECTIVE PRODUCT

All defective products other than DOA must be sent to the ELMO Service Center in Plainview, New York for repair. If the product is under warranty, proof of purchase must be included by the end user. If the product is returned for service by an ELMO Dealer/Distributor,

ELMO's invoice to the dealer/distributor must be included as proof of purchase.

## DOA PRODUCTS

DOA Products that fail out-of-box are accepted back at ELMO provided the above noted RMA procedure has been followed. After completing the incoming inspection procedure and being deemed defective ELMO will issue a credit to the dealer. If incoming inspection determines that the product is operating at Manufacturers specification the product will be returned to the dealer and ELMO published labor charges for the inspection will be billed to the dealer. RMA's for defective or DOA product must be received in by ELMO within (60) sixty days of invoice date. Products returned after that 60 day period will be handled under the provisions of ELMO's standard warranty.

## YEAR 2000 STATEMENT

All ELMO products and software are Year 2000 compliant. While some products incorporate microprocessors, none are dependent on date or use date for any function. For further information please contact: Manager, Technical Support (516) 501-1400 ext. 110

## NOTICE

The possession of the Price List does not necessarily entitle the processor to the net prices shown, nor is it necessarily an offer to sell. All prices are subject to change without notice. No adjustment will be made because of price changes.

# ELMO WARRANTY POLICY

ELMO products carry a product-specific warranty covering parts and labor (see schedule below). Contact your ELMO representative for warranty information on accessories, lamps and lenses.

## PRODUCTS

## WARRANTY PERIOD

Visual Presenters, Opaque LCD Projectors, Overhead Projectors .....	2 YEARS
Film-to-Video Converters .....	1 YEAR
PTC Series Cameras, Slide Projectors	

*DIGITAL Visual Presenters*

CODE	PRODUCT NAME/DESCRIPTION			LIST
------	--------------------------	--	--	------

**9336 HV-110XG 999.50**



- True XGA (60Hz) High-Resolution Mobile Presenter**
- 1/3" 850,000 pixels progressive scan CCD
  - Real time viewing at 20 frames/sec.
  - Adjustable camera arm for image sizing
  - Shooting area: 364X271mm-179X135mm (14.3"X10.7"-7.0"X5.3")
  - No focus/iris adjustment needed
  - Up to 4 times digital macro-zoom function
  - Built-in lighting unit (white LED)
  - Built-in analog RGB switcher
  - Automatic white balance  
(net weight 3.2lbs, shipping weight 7.5lbs)



**Accessories**

<b>9455-SC</b>	<b>Soft Case for HV-110XG/EV-200</b>	<b>19.95</b>
<b>9412</b>	<b>EVR-100, Annotation Module</b>	<b>145.00</b>
<b>4367</b>	<b>Writing Roll</b>	<b>6.50</b>
<b>SV-450</b>	<b>Base Light &amp; Box</b>	<b>145.00</b>
<b>SV9412</b>	<b>Base Light Box &amp; EVR-100 Combo</b>	<b>280.00</b>

**9437 HV-3000XG 2,790.00**

- True XGA (60Hz) resolution Visual Presenter**
- XGA-NTSC-PAL outputs
  - 1/3" 850,000 (1,024 x 768) pixels progressive-scan CCD
  - Digital interface USB port for high speed image transfer with "ImageMate for HV-3000XG" software (Supplied)
  - High Performance 10x optical zoom
  - Auto-Focus & Auto-Iris
  - Supplied with wireless remote (IR) controller & mouse
  - Remote control through RS-232C
  - Full size stage with top lights
  - Pause mode, Arrow pointer
  - Convenient rotating camera head and flexible lighting arms  
(net weight: 14.3lbs, shipping weight: 30lbs)



**Accessories**

		<b>60.00</b>
<b>9433</b>	<b>MS-402, Monitor TV Shoe with Cable</b>	<b>399.00</b>
<b>9426</b>	<b>LM5011N, 5" Color LCD Monitor</b>	<b>339.00</b>
<b>9370</b>	<b>LM-403N, 4" Color LCD Monitor-While Supplies Last</b>	<b>415.00</b>
<b>9448</b>	<b>MG-600, Magniscope Viewer</b>	<b>25.00</b>
<b>5L71200901</b>	<b>9W Fluorescent Lamp for Top Lights (1 Piece)</b>	<b>99.00</b>
<b>HQ30Y</b>	<b>Padded Soft Carrying Case</b>	<b>585.00</b>
<b>HQ40Y</b>	<b>Hard Shipping Case with Pullout Handle and Caster</b>	<b>145.00</b>
<b>SV-450</b>	<b>Base Light Box</b>	<b>145.00</b>
<b>9412</b>	<b>EVR-100, Annotation Module</b>	
<b>4367</b>	<b>Writing Roll</b>	<b>6.50</b>
<b>SV9412</b>	<b>Base Light Box &amp; EVR-100 Combo</b>	<b>280.00</b>



## DIGITAL Visual Presenters

CODE	PRODUCT NAME/DESCRIPTION		LIST
------	--------------------------	--	------

9330

**HV-5100XG**

**3,450.00**



*True XGA (60Hz) resolution visual presenter*

- XGA, Composite, S-video (NTSC-PAL) outputs
  - 1/3" 850,000 (1,024 x 768) pixels progressive-scan CCD
  - 18x optical power zoom with 2x digital magnification, up to 36x magnification
  - Auto focus & Power focus
  - 20 frames /sec.
  - Rotating camera head
  - Frame accumulation mode for super clear, clean images
  - Compact body-easy storage within a lectern drawer
  - Screen scroll function at enlarged mode
  - 8 image memory
  - USB prot to download images to PC
  - Supplied with wireless IR remote controller
  - Built-in down converter converts RGB signals to video signal
  - Remote control through RS-232C
  - Full size stage with top & base lights
- (net weight: 21.6lbs, shipping weight: 36 lbs.)*



### Accessories

		<b>LIST</b>
9369	<b>MS-201</b> , Monitor TV Shoe with Cable	<b>39.50</b>
9426	<b>LM5011N</b> , 5" Color LCD Monitor-(Beige)	<b>399.00</b>
9426-1	<b>LM5011N</b> , 5" Color LCD Monitor-(Gray)	<b>399.00</b>
9448	<b>MG-600</b> , Magniscope Viewer-View the glass slides!	<b>415.00</b>
9356	<b>6W Fluorescent Lamp</b> for Top and Base Lights (2/box)	<b>57.00</b>
HQ50Y	<b>Padded Soft Carrying Case</b>	<b>109.00</b>
HQ60Y	<b>Hard Shipping Case</b> with Pullout Handle and Caster	<b>585.00</b>
9412	<b>EVR-100</b> , Annotation Module	<b>145.00</b>
4367	<b>Writing Roll</b>	<b>6.50</b>



## DIGITAL Visual Presenters

CODE	PRODUCT NAME/DESCRIPTION		LIST
9452	<b>HV-8000SX</b> <i>True SXGA (60Hz) resolution, via Web/LAN network visual presenter.</i> <ul style="list-style-type: none"> <li>• Transmits clear SXGA high-resolution image</li> <li>• Sends a real-time/live image</li> <li>• Operates the Presenter from a remote location</li> <li>• Shares the document with others via the internet</li> <li>• True SXGA (1280X1024) resolution plus NTSC/PAL Video output</li> <li>• SXGA-quality 10X powered optical zoom lens plus electronic magnification</li> <li>• I/R remote (supplied), Mouse (supplied), RS-232C controls</li> <li>• USB port for image transfer to PC</li> <li>• Industrially-designed twin lighting units</li> <li>• Baselight for transparency</li> <li>• Built-in downconverter</li> <li>• Camera head turn with 180° image rotation</li> <li>• OSD (On Screen Display) control with Icon (net weight: 23lbs, shipping weight: 38lbs)</li> </ul>		6,795.00



### Accessories

		LIST
9454	<b>ICL-430 Accessory Lens F/HV-8000SX</b> <i>This lens is useful when the camera head is turned to shoot audience or the subject on the wall.</i>	295.00
9448	<b>MG-600, Magniscope Viewer-View the glass slides!</b>	415.00
9426	<b>LM5011N, 5" Color LCD Monitor (Beige)</b>	399.00
9426-1	<b>LM5011N, 5" Color LCD Monitor (Gray)</b>	399.00
9356	<b>6W Fluorescent Lamp for Top and Base Lights (2/box)</b>	57.00
ZB61Y	<b>Padded Soft Case</b>	109.00
HQ80Y	<b>Hard Shipping Case with Pullout Handle and Caster</b>	585.00
9412	<b>EVR-100, Annotation Module</b>	145.00
4367	<b>Writing Roll</b>	6.50

Trademarks or registered trademarks are the property of their respective holders



## DIGITAL Visual Presenters

CODE	PRODUCT NAME/DESCRIPTION	LIST
------	--------------------------	------

<b>9333</b>	<b>HV-7100SX</b>	<b>4,750.00</b>
-------------	------------------	-----------------



*Progressive Scan CCD SXGA 2.1 mega pixels*

- SXGA-NTSC-PAL-YC outputs
- 1/2" 2,100,000 (1,688 x 1,248) pixels progressive-scan CCD
- 15 frames per second
- Digital interface USB port for high speed image transfer with supplied "ImageMate for USB" software/twain driver
- 10x optical zoom plus 2x electronic magnification
- Auto focus & power focus
- Supplied with wireless remote (IR) controller & mouse
- Remote control through RS-232C
- Highlighted zoom window & scrolling
- Positive/Negative, Color/B&W change
- Full size stage with top & base lights
- Annotation, split screen features
- Image rotation, Pause controls, Arrow pointer  
(net weight: 22lbs, shipping weight: 39lbs)



<b>9421</b>	<b>HV-7000SX w/Software for USB</b>	<b>4,500.00</b>
-------------	-------------------------------------	-----------------

*True SXGA (75Hz) resolution visual presenter*

- SXGA-XGA-SVGA-VGA-NTSC-PAL-YC outputs
- 1/2" 1,500,000 (1,280 x 1,024) pixels progressive-scan CCD
- Digital interface USB port for high speed image transfer with supplied "ImageMate for USB" software
- 10x optical zoom plus 2x electronic magnification
- Auto focus & power focus
- Supplied with wireless remote (IR) controller & mouse
- Remote control through RS-232C
- Positive/Negative, Color/B&W change
- Full size stage with top & base lights
- Image rotation, Pause controls, Arrow pointer  
(net weight: 22lbs, shipping weight: 39lbs)



**Accessories**

		LIST
<b>9369</b>	<b>MS-201, Monitor TV Shoe</b>	<b>39.50</b>
<b>9426</b>	<b>LM5011N, 5" Color LCD Monitor (Beige)</b>	<b>399.00</b>
<b>9426-1</b>	<b>LM5011N, 5" Color LCD Monitor (Gray)</b>	<b>399.00</b>
<b>9448</b>	<b>MG-600, Magniscope Viewer-View the glass slides!</b>	<b>415.00</b>
<b>9356</b>	<b>6W Fluorescent Lamp for Top and Base Lights (2/box)</b>	<b>57.00</b>
<b>HQ50Y</b>	<b>Padded Soft Carrying Case</b>	<b>109.00</b>
<b>HQ60Y</b>	<b>Hard Shipping Case with Pullout Handle and Caster</b>	<b>585.00</b>
<b>9412</b>	<b>EVR-100, Annotation Module</b>	<b>145.00</b>
<b>4367</b>	<b>Writing Roll</b>	<b>6.50</b>

Trademarks or registered trademarks are the property of their respective holders

## DIGITAL CEILING PRESENTER

CODE	PRODUCT NAME/DESCRIPTON		LIST
9335	HV-C1000XG		9,000.00

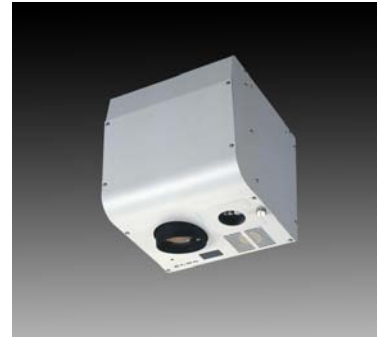


### Ceiling Mount Presenter

Documents come in every form, and this XGA ultra-telescopic high-resolution presenter handles them all.

**True XGA** (60Hz) resolution visual presenter

- XGA, Composite, S-video (NTSC-PAL) outputs
- 1/3: 850,000 (1,024 x 768) pixels progressive-scan CCD
- 12x optical power zoom with 2x digital magnification, up to 24x magnification
- Auto focus & Power focus
- 20 frames /sec.
- Frame accumulation mode for super clear, clean images
- Screen scroll function at enlarged mode
- 8 image memory
- USB port to download images to PC
- Supplied with wireless IR remote controller
- Built-in down converter converts RGB signals to video signal
- Remote control through RS-232C  
(net weight: 14.3lbs)



\* UL certified mount bracket for projectors is recommended for installation of HV-C1000XG

### Accessories

1701 12V-50W Lamp

LIST

33.25



## DIGITAL Slide Film Presenters

CODE	PRODUCT NAME/DESCRIPTION		LIST
------	--------------------------	--	------

9439	<b>TRS-3500SX Slide Film Presenter</b>		8,995.00
------	--	--	----------

Converts 35mm slide film image to SXGA

- 1/2" 1,500,000 (1,280 x 1,024) pixels progressive-scan CCD
- **SXGA**, NTSC, S-Video outputs
- 2.5x optical zoom plus 2x digital magnification
- Auto-Focus and Auto-Iris
- Memory built-in for freeze, mirror, image rotation / magnification, scroll
- Four color video pointer, Nega-posit conversion
- Supplied wireless (IR) remote control and mouse
- Digital interface USB and RS-232C ports
- On-screen Icons and OSD setting
- 7.5fps image transfer

(net weight: 28lbs, shipping weight: 43lbs)



**Accessories**

8595	<b>12V-8W, Spare Lamp (2/box)</b>		7.50
9369	<b>MS-201, Monitor TV Shoe</b>		39.50
9426	<b>LM5011N, 5" Color LCD Monitor</b>		399.00
9370	<b>LM403N, 4' Color LCD Monitor- While Supplies Last</b>		339.00

CODE	PRODUCT NAME/DESCRIPTION		LIST
------	--------------------------	--	------

9427	<b>TRS-35XG Slide to XGA Presenter</b>		3,795.00
------	--	--	----------

Converts 35mm slide film image to XGA

- 1/3" 850,000 (1,024 x 768) pixels progressive-scan CCD
- **XGA**, C-Video & S-Video outputs
- 2.5x power zoom lens, power focus
- Accepts standard circular trays
- Built-in interval timer (1.5 ~ 30 seconds)
- 15fps image transfer speed
- Optional wired or IR remote controllers available

(net weight: 15lbs, shipping weight: 19lbs)

**While Supplies Last!**



**Accessories**

9357	<b>RC-351 Wired Remote Control Unit (Cable Length 11")</b>		115.00
9358	<b>RCW-352 Wireless IR Remote Control Unit</b>		360.00
	Functions include Fwd, Rev, Zoom, Focus, Iris, Lamp On/Off & Homing		
9369	<b>MS-201, Monitor TV Shoe</b>		39.50
9426	<b>LM5011N, 5" Color LCD Monitor</b>		399.00
9370	<b>LM403N, 4" Color LCD Monitor-While Supplies Last</b>		339.00
8549-1	<b>24V-6W Spare Lamp ( 2/box)</b>		7.50
4199-1	<b>Soft Carrying Case (Holds TRS-35XG and Slide Tray)</b>		95.00



## ANALOG Visual Presenters

CODE	PRODUCT NAME/DESCRIPTION			LIST
------	--------------------------	--	--	------

**9456 EV-200 Mobile Presenter**

**865.00**

*ELMO's newest visual presenter is both compact and easy to set-up. With it weighing 3.3lbs and the size of a novel the EV-200 has become our new analog notebook presenter.*

- Adjustable camera arm for image sizing
- Shooting area: 14.3"X10.7"-7.0"X5.3"
- No focus adjustment (Fixed focus)
- No iris adjustment needed
- Automatic White Balance
- 1/3" 410,000 pixels interline-transfer color CCD
- Real time viewing at 30 frames/sec.  
(net weight: 3.3lbs, shipping weight 7lbs)



**Accessories**

- 9455-SC Soft Case for HV-110XG/EV-200**
- 9412 EVR-100, Annotation Module**
- 4367 Writing Roll**
- SV-450 Base Light & Box**
- SV9412 Base Light Box & EVR-100 Combo**

LIST

**19.95**

**145.00**

**6.50**

**145.00**

**280.00**

CODE	PRODUCT NAME/DESCRIPTION			LIST
------	--------------------------	--	--	------

**9430 EV-2000AF Compact Visual Presenter**

**1,995.00**

*This visual presenter is easy-to-use with a compact body size yet fully featured and economical!*

- 56% smaller footprint & 30% lighter in weight than traditional document cameras
- 470TVL(H), S-Video & Composite video outputs
- Full pan/tilt head positioning capability
- 24x max. power zoom range (12x optical + 2x digital)
- Image scrolling capability from supplied remote controller
- Fully automatic camera settings
- RS-232C control port for computer automation
- Fully adjustable light arms standard
- Unobstructed stage for oversize documents
- Shipping weight: 29lbs (13kg)
- Dimensional weight: 49lbs (22kg)



**Accessories**

- 9433 MS-402, Monitor TV Shoe with cable**
- 9426 LM5011N, 5" Color LCD Monitor**
- 9370 LM403, 4" Color LCD Monitor-While Supplies Last**
- 9448 MG-600, Magniscope Viewer-View glass slides!**
- 5L71200901 9W Fluorescent Lamp for Top Lights (1 piece)**
- HQ30Y Padded Soft Carrying Case**
- HQ40Y Hard Shipping Case with Pullout Handle and Caster**
- SV-450 Base Light Box**
- 9412 EVR-100, Annotation Module**
- 4367 Writing Roll**
- SV9412 Base Light Box & EVR-100 Combo**

LIST

**60.00**

**399.00**

**339.00**

**399.00**

**25.00**

**99.00**

**585.00**


**145.00**

**145.00**

**6.50**





**344.00**

## ANALOG Visual Presenters, Cont.

CODE	PRODUCT NAME/DESCRIPTION		LIST
9441	<b>EV-4400AF</b> <b>The Visual Presenter incorporates the latest in High Technology &amp; user-friendly control level and the most convenient form of use.</b> <ul style="list-style-type: none"> <li>• 18x optical powered zoom with Auto focus/iris</li> <li>• Digital image magnification and scrolling</li> <li>• Max. 420x310mm (16.5x12.2") wide shooting area</li> <li>• More than 470 TV lines high resolution &amp; better than 48dB S/N</li> <li>• Built-in baselight for transparency / slide film viewing</li> <li>• Twin upper lighting unit for even and bright illumination</li> <li>• Operation via front panel, wireless remote control (supplied), mouse (supplied) or RS-232C terminal</li> <li>• 5" LCD monitor (optional) attachable</li> <li>• Audio input/output and microphone input</li> <li>• Auto/push-set white balance control</li> <li>• Negi/posi, color/B&amp;W conversion</li> <li>• Internal/external sync</li> <li>• OSD (on screen display) control</li> <li>• Flat stage body with foldable camera arm and carrying handle (net weight: 22lbs, shipping weight: 34lbs)</li> </ul>		2,695.00
<b>Accessories</b>			
9449	<b>MS-500, Monitor TV Shoe with Cable</b>		39.50
9426	<b>LM5011N, 5" Color LCD Monitor</b>		399.00
9370	<b>LM403N, 4" Color LCD Monitor- While Supplies Last</b>		339.00
9448	<b>MG-600, Magniscope Viewer- View glass slides!</b>		399.00
9356	<b>6W Fluorescent Lamp for Top &amp; Base Lights (2/box)</b>		57.00
ZB61Y	<b>Padded Soft Case</b>		109.00
HQ80Y	<b>Hard Shipping Case w/pullout Handle &amp; Caster</b>		585.00
9412	<b>EVR-100, Annotation Module</b>		145.00
4367	<b>Writing Roll</b>		6.50



## Multi-Functional Opaque LCD Projectors

CODE	PRODUCT NAME/DESCRIPTION		LIST
7610 	<b>MP-700E</b> The MP-700E combines a standard data projector and a TV camera into a single integrated projection Package. This unique configuration allows for the projection of five medias-documents/photographs, x-ray film, transparencies, data & video-from one compact package. <ul style="list-style-type: none"> <li>• 4,300 ANSI Lumens</li> <li>• 2-Million-Pixel CCD Camera</li> <li>• Native Resolution (XGA), (UXGA) Compatible</li> <li>• OHP &amp; PC: 6.25x zoom</li> <li>• Key Stone Correction</li> <li>• Document Rotation Capability</li> <li>• Compact Flash Card Slot</li> <li>• NET 8.5 Kg (Approx. 18.9 lbs.)</li> </ul>		<b>9,999.00</b>
7611	<b>Lamp Kit for MP-700E</b>		<b>530.00</b>
SV-450	<b>Backlight panel for x-ray film</b>		<b>145.00</b>
7612	<b>ATA case with pull out handle and casters</b>		<b>630.00</b>
7600 	<b>MP-50E</b> <ul style="list-style-type: none"> <li>• 3,000 ANSI Lumens</li> <li>• 2-Million-Pixel CCD Camera</li> <li>• Native Resolution (XGA), (UXGA) Compatible</li> <li>• OHP &amp; PC: 6.25x zoom</li> <li>• Key Stone Correction</li> <li>• Document Rotation Capability</li> <li>• Stores up to 8 Documents</li> <li>• NET 7.3 Kg (Approx. 16.1 lbs.)</li> </ul>		<b>6,195.00</b>
7601	<b>Lamp Kit for MP-50E</b>		<b>519.00</b>
SV-450	<b>Backlight panel for x-ray film</b>		<b>145.00</b>
7602	<b>ATA case with pull out handle and casters</b>		<b>545.00</b>



*ANALOG Film to Video Converters*

CODE	PRODUCT NAME/DESCRIPTION		LIST
------	--------------------------	--	------

**9315 TRV-35H 35mm slide-to-video transfer**  
*410,000 pixel 1/2" CCD chip; 450 TV (H) lines of resolution; power zoom, iris and focus; "joy-stick" color correction; RS-232C; 8-pin remote terminals x2; built-in internal timer 1.5~30 sec; external sync. Output: C-Video, S-Video, RGB*  
*Dimensions: 5.0 x 11.2 x 11.5" (126 x 284 x 292mm), 14.8lbs (6.7kg)*  
*Shipping Weight: 19lbs (8.6kg)*

**3,350.00**



**While Supplies Last!**

**Accessories**

LIST

**9357 Wired Remote Control RC-351 for TRV-35H**  
*Functions include Fwd, Rev, Zoom, Focus, Iris, Lamp On/Off, Homing. Cable length: 11'*

**115.00**

**9358 Wireless IR Remote Control RCW-352 for TRV-35H**  
*Functions include: Fwd, Rev, Zoom, Focus, Iris, Lamp On/Off, Homing*

**360.00**

**8549-1 24V-6W Lamp for TRV-35H (2 per box)**

**7.50**

**4199-1 Soft Carrying Case (Holds TRV-35H and Slide Tray)**

**95.00**

## PAN-TILT-ZOOM COMMUNICATION CAMERAS

CODE	PRODUCT NAME/DESCRIPTON	LIST
9718-2	PTC-100S	1,175.00
9731-2	PTC-110R Reverse Mount Type <i>(includes ceiling bracket)</i>	1,175.00

ELMO PTC-100S & PTC-110R are the Pan-Tilt-Zoom full-control Communication camera with the latest electronics & optical technologies.

### Unsurpassed in Performance

22x optical zoom to clearly capture the details  
 Full-Auto focus plus manual focus  
 300 degrees in total for panning & 120 degrees in total for tilting  
 Max. 90 degrees/sec. Pan/tilt speed  
 More than 460TV lines high resolution  
 Full camera controls include: backlight compensation, iris selection, white balance, color balance, AGC gain, edge enhancement.  
 Wide-angle adapter (optional) attachable (FOV:68 degrees (H))

### Cutting Edge Design

Low-profile, symmetrical design permits unobtrusive integration  
 The housing is constructed from extruded ABS with an attractive brushed aluminum two-tone coating  
 4.9x6.0x5.4" in dimensions and 1.7 lbs in weight

### Versatile Control Features

I/R remote control from front and rear  
 Up to six cameras can be controlled by a single IR remote controller  
 RS-232C daisy chain connection for a max. of 7 PTC-100's  
 6 position pre-set mode  
 Auto & manual (8 speed) speed control  
 Left/right direction change, homing, pan/tilt reset  
 Power save mode provided  
 RS-232C Protocol and sample software is available at our website: [www.elmoussa.com](http://www.elmoussa.com)

The desktop control panel and related cables are available from:  
[Telemetrys Inc. 6 Leighton Place, Mahwah, NJ 07430](http://Telemetrys Inc. 6 Leighton Place, Mahwah, NJ 07430)  
 Tel. (201) 848-9818, [www.telemetrysinc.com](http://www.telemetrysinc.com)  
 Specify CP-ITV-PTC-Desktop control panel.  
 (net weight: 1.7lbs, shipping weight: 5 lbs)



PTC-100S



PTC-110R

### Accessories

		LIST
9722	Remote Extension Unit F/PTC-100S & PTC-110R, allows you to control the camera from 1,500 feet away.	390.00
9870	Wide-Angle Adapter Lens, WC01 F/ALL PTC Series CAMERAS	80.00
9870-1	EWB-100, P/T Wall Bracket F/PTC-100S	60.00
9870-2	ECB-100, P/T Ceiling Bracket F/PTC-100S	70.00
ERS-6	RS-232C Cable 6'	34.00
ERS-25	RS-232C Cable 25'	57.00



## PAN-TILT-ZOOM COMMUNICATION CAMERAS, Cont.

CODE	PRODUCT NAME/DESCRIPTION			LIST
------	--------------------------	--	--	------

- |               |  |  |  |                 |
|---------------|--|--|--|-----------------|
| <b>9737-2</b> | <b>PTC-201C IP Network Camera</b> <ul style="list-style-type: none"> <li>• Network ready via TCP/IP, ARP, UDP, ICMP, FTP, HTTP, telnet</li> <li>• Browser based interface for control</li> <li>• Full PTX control via internet</li> <li>• JPEG compression baseline compliant</li> <li>• Max 30 FPS frame rate @ QVGA (320 X 240)</li> <li>• VGA and QVGA selectable</li> <li>• Max user access up to 10 users</li> <li>• Password based IP address filtering network security</li> <li>• Built-in web server with 32 bit RISC EMBEDDED CPU</li> <li>• 10/100 base T RJ-45 port for easy Ethernet connection</li> <li>• 22X optical zoom</li> <li>• 105 degrees/second pan</li> <li>• 470 TVL Horizontal Resolution</li> <li>• Wireless remote controller</li> <li>• 2 alarm inputs, 1-alarm output/6-presets</li> <li>• RS-485 controllable via ESD-CC1 system commander</li> </ul> <p>(net weight: 2.5lbs, shipping weight 6.5lbs)</p> |  |  | <b>1,650.00</b> |
|---------------|--|--|--|-----------------|



CODE	PRODUCT NAME/DESCRIPTION			LIST
------	--------------------------	--	--	------

- |               |  |  |  |                 |
|---------------|--|--|--|-----------------|
| <b>9721-2</b> | <b>PTC-200C</b> <ul style="list-style-type: none"> <li>• 12VDC PTZ for monitoring</li> <li>• 22x Optical Zoom w/ On Screen Menu</li> <li>• 105°/second pan</li> <li>• 470 TVL Color Camera</li> <li>• Wireless remote controller</li> <li>• 2 alarm inputs/6-presets</li> <li>• RS-485 controllable via ESD-CC1A system commander</li> <li>• Ceiling Mount Hardware Included</li> </ul> <p>(net weight: 1.75lbs, shipping weight 5lbs)</p> |  |  | <b>1,370.00</b> |
|---------------|--|--|--|-----------------|



**7452 ESD-CC1 Controller**

**990.00**

**ECM-1601 Colorplex 16, 16 channel Multiplexer**

1390.00

**Accessories**

**LIST**

**9870 WC01, Wide-Angle Adapter Lens-FOV: 68° (H)**

**80.00**



## BUILT-IN CCU COLOR MICRO CAMERA

CODE	PRODUCT NAME/DESCRIPTION		LIST
9754	MN400		1,230.00

### ONE-PIECE HIGH RESOLUTION COLOR MICRO CAMERA

Solve those difficult video assignments with the amazing micro sized MN400. It's 3/4" x 3/4" in size and weight only 0.11lbs.

- 1/2" color interline- transfer CCD
- 480 TVL horizontal resolution
- Built-in camera control unit
- Min. illumination 2 LX
- S/N ration 50 dB
- Compact Body 0.75 x 0.75 x 3.15 inches



### Accessories

		<u>LIST</u>
9894	AC Adapter	60.00
9888	MNC-03A, 3m Cable	118.00
9888-1	MNC-10A, 10m Cable	260.00
8771	3mm T183 Lens	670.00
9264	4mm T204D Lens	530.00
9250	7.5mm T1675F Lens	220.00
9265	15 mm T2015D Lens	300.00
9266	24mm T3124 Lens	480.00
9819	36mm T4536 Lens	700.00
9267	Pinhole T287P Lens	830.00
8797	25mm T3425M Macro Lens	630.00
8797-1	25mm T3425MB Macro Lens	630.00
8797-2	25mm T3425MC Marco Lens	630.00
9271	16mm T416M Macro Lens	700.00
9271-1	16mm T416MB Macro Lens	700.00
8733-1	Filter Set	320.00
8862	C Mount Adapter	76.00

## Overhead Projectors

### CLASSROOM OVERHEAD PROJECTORS

CODE	PRODUCT NAME/DESCRIPTION			LIST
4742	<b>HP-L3600</b> <i>360mm (12.6") high resolution triplet lens, rack &amp; pinion focusing, 10 x 10 in. aperture, 2000 ANSI lumens, quick lamp change device (one EYB lamp included), efficient open head, stage interlock switch, folding arm, safety thermal protection, forced air-cooling, writing roll attachment (option) easily mounted, UL/cUL approved.</i>			<b>239.00</b>
				
				
4741	<b>HP-L1102</b> <i>285 (11.2") lens, rack &amp; pinion focusing, 10 x 10 in. aperture, 2000 ANSI lumens, quick lamp change device (one EYB lamp included), efficient open head, stage interlock switch, folding arm, safety thermal protection, forced air-cooling, writing roll attachment (option) easily mounted, UL/cUL approved.</i>			<b>199.00</b>
				
				
4733	<b>HP-L2900</b>			<b>289.00</b>
4738	<b>HP-L11QLC</b>			<b>235.00</b>
	<b>While Supplies Last!</b>			
<b>Accessories</b>				
4557	<b>Writing Roll Attachment</b>			<b>23.50</b>
4367	<b>Writing Roll (10" x 65.5')</b>			<b>6.50</b>
4565	<b>Full Dust Cover for HP-L3550H &amp; 2900H</b>			<b>13.25</b>
5L48203614	<b>EYB (82V-360W) Lamp for HP-L3600, HP-L1102 and HP-L11's</b>			<b>14.25</b>
5L48603611	<b>ENX-5 (86V-360W) Lamp for HP-L3550H series</b>			<b>18.75</b>

*Overhead Projectors, cont.*

**HIGH LUMEN PORTABLE OVERHEAD PROJECTORS**

CODE	PRODUCT NAME	LIST
4719	<b>HP-3K Portable</b> <i>11.4" wide-angle lens; 10" x 10" aperture; ENX lamp provided with spare lamp holder; slip cover. Lumens: 3000</i>	<b>410.00</b>
<b>Accessories</b>		<b>LIST</b>
4351-1	<b>Slim Soft Case for 3K/4K series</b>	<b>49.50</b>
4555	<b>Writing Roll Attachment</b>	<b>28.00</b>
4556	<b>Writing Roll (11.25" X 65.5')</b>	<b>16.50</b>
4561	<b>ENX (82V-360W) Lamp for HP-3K &amp; HP-3K DX</b>	<b>18.75</b>

**While Supplies Last!**

**CONFERENCE ROOM OVERHEAD PROJECTORS**

CODE	PRODUCT NAME	LIST
4704	<b>HP-A305 SOLAR DELUXE</b> <i>575W Metal-halide lamp 265~305mm Vari-focal 3-element lens 360° swivel head Hi-Lo brightness control switch</i>	<b>1,495.00</b>
<b>Accessories</b>		
4555	<b>Writing Roll Attachment</b>	<b>28.00</b>
4556	<b>Writing Roll ( 11.25" X 65.5')</b>	<b>16.50</b>
4371	<b>575W Metal-Halide Lamp for HP-A305 SOLAR DELUXE</b>	<b>490.00</b>

**While Supplies Last!**



## Omnigraphic Professional Slide Projectors

### THE ELMO OMNIGRAPHIC SLIDE PROJECTOR SERIES

Designed specifically for the communicator, multi-image producer and other film-users who depend on a slide projector as an integral part of their profession. It is built to provide long-term service and superb projection under the most rigorous operating conditions.

CODE	PRODUCT NAME	LIST
4143	<b>Omnigraphic 301</b> <i>Manual focus; supplied with one ELH lamp (Does not include lens, tray or remote control) Weight: 14lbs, Shipping Weight: 19lbs (8.6kg)</i>	565.00
<b>Accessories</b>		<b>LIST</b>
4182	<b>ELH Lamp, 120V 300W</b>	29.85
4199-1	<b>Soft Carrying Case for Omni 301/301AF/253AF RAS</b>	95.00
4184	<b>RC-300, Remote Control for Omni 301/301AF/301 PRO AF</b>	43.00
4191-2	<b>T-3, Plug-in Interval Timer for Omni 301 &amp; 301AF</b>	65.00
8510	<b>Universal Lens Bracket</b> <i>Allows use of any "long" lens on all Omnigraphic projectors</i>	65.00
4194	<b>Ekta II/III Lens Bracket</b> <i>Allow use of 180-300mm Pro Zoom on Ektagraphic* II and III series slide projectors</i>	140.00

**While Supplies Last!**

\*Ektagraphic is a trademark of the Eastern Kodak Company



## Omnigraphic Flat-Field Projection Lenses

### **PROFESSIONAL 35mm PROJECTION LENSES**

ELMO offers the most reasonably priced, quality line of flat-field professional projection lenses on the market. Designed and manufactured by ELMO in our own factory, these lenses provide sharp, crisp and brilliant images.

The Omnigraphic Professional Lens Series offers many important user advantages:

1. Flat-field design
2. All-Glass optics — all surfaces coated
3. High resolution and remarkably distortion free
4. Brilliant light transmission — clean whites and high-contrast blacks
5. "f-stop" ratings based on actual measurements and stringent controls
6. Factory matched for critical image sizing within  $\pm 2\%$  tolerance or less
7. ELMO manufactured rack-focus lenses are compatible with Kodak Carousel and Ektagraphic, Telex Caramate (front screen), E. Leitz Pradolux RT and other similar projectors

### **OMNIGRAPHIC ZOOM LENSES**

<b>CODE</b>	<b>PRODUCT NAME</b>	<b>LIST</b>
<b>4196</b>	<b>100-150mm (4"-6") F/3.5 Zoom</b> <i>Seven groups, seven elements. Sharp, bright lens in the most universally used zoom range for classroom and conference room applications</i>	<b>120.00</b>
<b>4183-2</b>	<b>70-125mm (2.75"-5") F/2.8 Pro-Zoom</b> <i>Nine groups, ten elements. Best all-around lens for field use. The ultimate definition and brilliance throughout its entire focal length range. Locking screw for zoom ring.</i>	<b>333.00</b>
<b>4168-2</b>	<b>180-300mm (7.0"-12") F/4.5 Pro-Zoom</b> <i>Five groups, nine elements. Absolutely without peer! Brilliant performance—brighter than lenses claiming to be twice as fast. Out performs any lens in this category. Locking screw for zoom ring. Lens support bracket for Omnigraphic included; other brackets optional.</i>	<b>720.00</b>

\*Trademarks are the property of their respective owners.

## Lamp Replacement Guide

CODE	ANSI CODE OR TYPE	RATING	AVG. LIFE EXPECTANCY	MODEL	LIST
<b>For Visual Presenter</b>					
9356	Exclusive	6W Fluores.	1000 hr	HV-8000SX/HV-7100SX/HV-7000SX HV-5100XG/HV-5000XG EV-8000AF/EV-6000AF EV-500AF/EV-400AF/EV-4400AF Top/base light (2 pcs. In a box)	56.50
5L71200901	Exclusive	9W Fluores.	1000 hr	HV-3000XG, EV-2000AF	25.00
1701	Exclusive	12V-50W	4000 hr	HV-C1000XG	33.25
5Z0192	Exclusive	8W Fluores.	1000 hr	EV-368/700AF for base light BI-240 Baselight panel (1pr.)	85.00
8732	FL4W	4W Fluores.	1000 hr	EV-308/EV-274	8.50
5L72401301	Exclusive	13W Fluores.	1000 hr	EV-700AF top light	26.60
9371	Exclusive	12V-3W	500 hr	DT-70 (2 pcs. in a box)	7.15
5L70121801	Exclusive	18W Fluores.	1000 hr	EV-X baselight	25.00
9352	FL6W	6W Fluores.	1000 hr	LU-100 (2 pcs. in a box)	19.90/box
8551-1	Exclusive	120V-40W	1000 hr	LU-308 (2 pcs. in a box)	11.90/box
8773	Exclusive	8W Fluores.	1000 hr	BI-100 base light panel (1 pr.)	85.00/box
8773-1	Exclusive	18W Fluores.	500 hr	LB-38 Slimlite Light Box (1 pc.)	41.60
8773-2	Exclusive	18W Fluores.	10,000 hr	SV-450/VP-4050V base light (1 pr.)	60.00
<b>For Film to Video/Analog RGB Converters</b>					
8549-1	Exclusive	24V-6W	2000 hr	TRV-35G/35H, TRS-35XG (2 pcs. in a box)	
8592	Exclusive	12V-6W	2000 hr	TRV-35 (2 pcs. in a box)	8.25/box
5L41200128	Exclusive	12V-10W	2000 hr	TRV-35RAS	16.60
8591	Exclusive	6V-10W	2000 hr	TRV-16/S8/R8	29.50
8595	Exclusive	12V-8W	2000 hr	TRS-3500SX/TRV-16G/H (2 pcs. in a box)	7.15/box
<b>For LCD Projectors</b>					
9468	UHB	160W	500 hr	EDP-X20	
9465	UHB	130W	500 hr	EDP-S10	440.00
9462	UHP	150W	1000 hr	EDP-6100 & EDP-3600	525.00
9393	UHP	120W	2000 hr	EDP-5100	525.00
9394	UHP	120W	2000 hr	EDP-3100	525.00
9392	Metal halide	250W	2000 hr	EDP-2100	450.00
7601	Mercury	260W	1400 hr	MP-50E	519.00
7611	Mercury	300W	1400 hr	MP-700E	530.00
<b>For Overhead Projectors</b>					
5L48203614	EYB	82V-360W	75 hr	HP-L1102/HP-L3600 HP-L11/L11QLC/L11CH	14.25
4561	ENX	82V-360W	75 hr	HP-L355/L290 Series/ HP-L3550/2900, HP-3K/3KDX, HP-254S, HP-L14 Series	18.75
5L48603611	ENX-5	86V-360W	75 hr	HP-L3550H/DX, HP-L3500E, HP-L2900H/DX	18.75
4412	FXL	82V-410W	40 hr	HP-4K DX	20.35
4170	EHJ	24V-250W	50 hr	HP-A290/A270/HP-A305LV	20.40
4413-EXP	Metal-halide	400W	500 hr	HP-2850 Solar	390.00
4568	FLW	24V-300W	50 hr	HP-2450LV, HP-285S/285P HP-3500 Zoom	29.90
4371	Metal-halide	575W	600 hr	HP-2700 Solar/HP-2450 Solar HP-A305 Solar Deluxe HP-A380 Solar Zoom	490.00
4407	EVD	36V-400W	50 hr	HP-500Zoom/A380Zoom/ A305SQ/400HZ	20.00
4537	Metal-halide	250W	500 hr	HP-A305 Solar	330.00
4357	Exclusive	120V-650W	75 hr	HP-2450/3000/3300	29.50
4361	Exclusive	120V-1000W	50 hr	HP-2450 Deluxe	82.50



## Lamp Replacement Guide cont'd.

CODE	ANSI CODE OR TYPE	RATING	AVG. LIFE EXPECTANCY	MODEL	LIST
<b>For Slide Projects</b>					
4182	ELH	120V-300W	35 hr	Omni 300/301/PRO Series EP-6000	29.85
4170	EHJ	24V-250W	50 hr	Omni 252/253AF RAS	20.40
8397-II	KXL-550HF or XD550C/H-OL	550W Xenon	1000 hr	Omni 550AF Xenon (Type II ; Serial No. above 911381)	525.00
<b>For 16mm Projectors</b>					
1284	ELC	24V-250W	50 hr	16-CL/CLTC, 16-F, 16-AL	21.60
1353	KXL-252HF	250W Xenon	1000 hr	16-CL Xenon	360.00
1371	XD350B/H-OL	350W Xenon	1000 hr	CX-350	375.00
8393	XD550S/1-OL or UXL125CA	550W Xenon	1000 hr	XP-550SM	525.00
1374	XE-550A	550W Xenon	600 hr	CX-550	525.00
8508-2	XE-750S/H-OL or KXL-752HF	750W Xenon	1000 hr	XP-750/760	885.00
8156-2	UXL-12SCA or XD1000S/H-OL	1000W Xenon	1000 hr	LX-1100	825.00
8160	XD-2000S/H-OL	2000W Xenon	1000 hr	LX-2200	1,125.00
1179	BRK	0.75AExciter lamp for audio	50 hr	16-CL/CLTC, CX-350/550, 16-AL Series	10.00
1169	BRS	0.75AExciter lamp for audio	50 hr	LX/XP Series, 16-F Series	10.00
<b>For Film Projectors</b>					
4293	DRA w/ fuse	120V-300W	300 hr	35-FTA Film strip projectors	16.70



Requested by: \_\_\_\_\_ Company: \_\_\_\_\_

Ship to: Name: \_\_\_\_\_  
 Business: \_\_\_\_\_  
 Address: \_\_\_\_\_  
 \_\_\_\_\_

<u>QUANTITY</u>	<u>PRICE LISTS</u>	<u>PURPOSE</u>
_____	<b>Confidential</b>	<input type="checkbox"/> Mailing
_____	<b>List</b>	<input type="checkbox"/> Stock
		<input type="checkbox"/> Show _____ (Name & Date)

Visual Presenters

\_\_\_\_\_ HV-C1000XG **New**  
 \_\_\_\_\_ HV-7100SX **New**  
 \_\_\_\_\_ HV-5100XG  
 \_\_\_\_\_ HV-110XG **New**  
 \_\_\_\_\_ HV-3000XG  
 \_\_\_\_\_ HV-8000SX  
 \_\_\_\_\_ HV-7000SX  
 \_\_\_\_\_ EV-200  
 \_\_\_\_\_ EV-2000AF  
 \_\_\_\_\_ EV-4400AF  
 \_\_\_\_\_ TRS-3500SX  
 \_\_\_\_\_ TRS-35XG

Additional Products

\_\_\_\_\_ MN400 Micro Camera  
 \_\_\_\_\_ PTC-100S & 110R Communication Camera  
 \_\_\_\_\_ PTC-201C IP Network Camera  
 \_\_\_\_\_ PTC-200C PTZ Monitor Camera  
 \_\_\_\_\_ MG-600 Magniscope Viewer  
 \_\_\_\_\_ Remote Control Unit  
 (for TRV-35H / TRS-35XG)  
 \_\_\_\_\_ EVR-100

Film to Video Converters

\_\_\_\_\_ TRV-35H

Overhead Projectors

\_\_\_\_\_ HP-L1102/HP-L3600 **New**  
 \_\_\_\_\_ HP-L2900H  
 \_\_\_\_\_ HP-L11CH  
 \_\_\_\_\_ HP-3K

OMNIGRAPHIC Series

\_\_\_\_\_ 301

Opaque LCD Projectors

\_\_\_\_\_ MP-50E **New**  
 \_\_\_\_\_ MP-700E **New**



Requested by: \_\_\_\_\_ Company: \_\_\_\_\_

Ship to: Name: \_\_\_\_\_

Business: \_\_\_\_\_

Address: \_\_\_\_\_

**QUANTITY**

**PRICE LISTS**

**PURPOSE**

\_\_\_\_\_  
\_\_\_\_\_

**Confidential**  
  
**List**

Mailing  
 Stock  
 Show \_\_\_\_\_  
(Name & Date)

**Visual Presenters**

\_\_\_\_\_ HV-C1000XG **New**  
\_\_\_\_\_ HV-7100SX **New**  
\_\_\_\_\_ HV-5100XG  
\_\_\_\_\_ HV-110XG **New**  
\_\_\_\_\_ HV-3000XG  
\_\_\_\_\_ HV-8000SX  
\_\_\_\_\_ HV-7000SX  
\_\_\_\_\_ EV-200  
\_\_\_\_\_ EV-2000AF  
\_\_\_\_\_ EV-4400AF  
\_\_\_\_\_ TRS-3500SX  
\_\_\_\_\_ TRS-35XG

**Additional Products**

\_\_\_\_\_ MN400 Micro Camera  
\_\_\_\_\_ PTC-100S & 110R Communication Camera  
\_\_\_\_\_ PTC-201C IP Network Camera  
\_\_\_\_\_ PTC-200C PTZ Monitor Camera  
\_\_\_\_\_ MG-600 Magniscope Viewer  
\_\_\_\_\_ Remote Control Unit  
(for TRV-35H / TRS-35XG)  
\_\_\_\_\_ EVR-100

**Film to Video Converters**

\_\_\_\_\_ TRV-35H

**Overhead Projectors**

\_\_\_\_\_ HP-L1102/HP-L3600 **New**  
\_\_\_\_\_ HP-L2900H  
\_\_\_\_\_ HP-L11CH  
\_\_\_\_\_ HP-3K

**OMNIGRAPHIC Series**

\_\_\_\_\_ 301

**Opaque LCD Projectors**

\_\_\_\_\_ MP-50E **New**  
\_\_\_\_\_ MP-700E **New**



Since 1921

**ELMO**

1478 Old Country Road  
Plainview, NY 11803

[www.elmousa.com](http://www.elmousa.com)