



KEEP THE SOUND IN

KEEP THE NOISE OUT

INTRODUCING

**THE
ESMONO SOUND
ISOLATION
ROOM**

BY

 **STUDIOSPARES**

2

Introducing...

The Esmono Sound Isolation Room

Lets noise and
silence co-exist
in harmony,
side by side



It works both ways, stopping sound getting **IN** as well as **OUT**.

WHAT IS IT?

Our Esmono Rooms are built for endurance with a performance to match. It essentially consists of a room within a room - giving fantastic sound isolation without the need of extensive planning or construction costs. The all-metal flexible construction yields an aurally stunning room, with the added benefit of allowing the room to be erected elsewhere if needed. The booth is a modular design based on identical wall and ceiling panels that can be interchanged, making the room incredibly adaptable.

WHAT ARE THE OPTIONS?

The booth's modular construction provides almost countless options. The standard sizes start at 1.2m x 1.2m x 1.95m and go as large as 4m x 3.7m x 2.15m with quotes for custom sizes available through the Studiospares sales team. Rooms include a fan driven ventilation system. Double Walled rooms are also available for extreme situations where the level of noise is excessive. Optional extras include Window Panels and Doors.

HOW IS IT CONSTRUCTED?

The booths are of steel construction which is between 10 and 50 times denser than traditional plywood versions. An analogy of why they are so efficient, hit a cymbal, let it ring, grasp it and the ring vanishes. Esmono secure Rockwool to the inside of the metal panels. The energy from the sound waves energises the metal which in turn is dissipated in the Rockwool. The inside wall is perforated to provide a tight acoustic control within the booth.

HOW ARE THEY INSTALLED?

Installation of the booths is fairly simple and, as such, can be achieved successfully by people with good DIY skills and a basic set of tools. However, the panels are heavy and the job is time consuming and we would recommend using our installation team. The team have installed hundreds of Esmono booths and are perfectly equipped to deal with any difficulties that may arise.



A brief history

Studiospares is a family run company with over 30 years in the recording and live sound industry. In addition to having a large online presence, we also have a real store in North-West London with demo facilities and immediate access to our huge stocks.

Studiospares can provide a custom installation service with the addition of electrics and air conditioning. We can arrange a **FREE** site visit or alternatively you can visit our showroom in London for a demonstration. Potential clients are welcome to test the room however they wish.

Please contact **Roy Collins** (r.collins@studiospares.com) for more details.

ACOUSTIC DOORS

Like the window panels, the doors may be placed practically anywhere. They can open inwards or outwards hinging on either side, and contain an acoustic window measuring 1.3m x 0.2m

WINDOW PANELS

The optional acoustic windows are essentially modified standard panels and are interchangeable with any of the wall panels.

DOOR SEALS

The lever action on the locking door latch compresses the rubber seals for no audio seepage.

FLOATING FLOORS

We also recommend the use of an internal floating floor to completely detach the activities inside the booth from those of the outside world.

VENTILATION UNITS

Ventilation for the sound booths is an integral part of the design, with pairs of multi-baffled ducts on every booth - 1 pair on the smaller booth and 2 on the larger options. In each pair of ducts, 1 duct contains an active fan unit while the other remains a passive outlet.



Applications

The **Esmono Sound Isolation Rooms** are used for a wide range of applications including:

- Practice Rooms
- Recording Studios
- Vocal Recording Booths
- Confidential Meetings/Calls
- NHS Audiology Units
- Witness Isolation Room



4

Case Studies

University of Kent

Studiospares received a call from Coombs Construction of Canterbury to supply and fully install seven Esmono Sound Booths for the University of Kent at the historic dockyard at Medway.

After meetings on site, a schedule of works was put in place to meet with the University's requirements. Deliveries from the manufacturer had to be phased to overcome the logistical problems of storing the panels prior to erection.

The works were to include four small rooms for single usage and three larger double walled rooms for band and group practice. Studiospares were to plan out and erect the rooms whilst certified electrical contractors installed and subsequently certified the electrical installation.

The rooms would have their own separate electrical supply to include wired sockets, lighting and RCD safety cut outs. Studiospares managed and fitted all the various multicore cables and interface boards for equipment signal inputs and outputs.



All units were fully installed in just under four weeks, two days ahead of schedule.



Teach First

Confidentiality in the Office Environment

Experiencing rapid growth to become the UK's largest graduate employer, Teach First have adopted an agile, open-plan, office environment that is flexible and efficient. Their problem was ensuring confidentiality for a significant number of sensitive phone calls each day. Which is where the Esmono soundproof booths from Studiospares came in. One booth was installed on each of the 3 floors of their offices.

Gareth Williams of **Teach First** commented: "They have completely resolved the problem. The Studiospares installation service was very good. Roy, their installs manager, came to do a site visit and was very flexible in trying to accommodate our requirements... the installation went without a hitch.

Overall, we're really pleased with the booths and the job Studiospares has done installing them, and we wouldn't hesitate to recommend this solution for businesses facing the same dilemma as us."



Case Studies

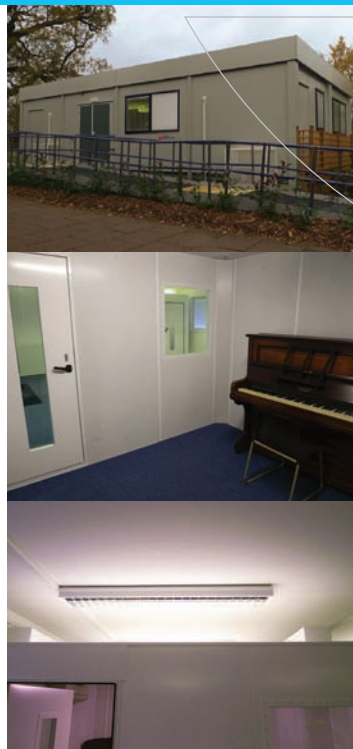
5

Leighton Park School

Leighton Park School were faced with the problem of finding a cost effective way of supplying four extra music teaching rooms for a short interim period until the completion of an extension to their music department.

They had thought of putting four purpose built rooms inside a temporary building close to the department and then reusing them once the temporary building was removed; and all within a deadline date of the start of the next term. Having looked at a number of options, issues such as acoustics, weight and air-conditioning were becoming increasingly difficult, as each option had problems.

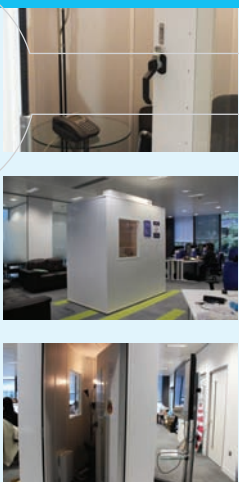
Having been passed our details and introduced to Roy Collins, our Chief Installation Engineer; they made a visit to our London office where an Esmono sound booth was on display. The room addressed all the problems of previous concern. A contract was soon in place, the order was confirmed, and the installation was completed on time for the start of the new term.



“From start to finish Studiospares provided a very professional service with an enthusiasm to ensure Leighton Park School got exactly what we wanted to the highest specification. The sound booths will at the end of this project be dismantled and repositioned in a boarding house adding years of professional quality facilities to our students.”

Trevor Clark

Director of Operations
Leighton Park School,
Reading



6

Case Studies

Reigate Sixth Form College

Studiospares were commissioned to design, supply and install 8 music rooms for Reigate College music department.

After three months of planning and numerous meetings, the college decided on 4 double skinned booths for practice rooms on the ground floor and 4 of the new 100mm thick booths including internal partitions with an extra door and window for teaching rooms on the first floor. Due to the size of the project, deliveries to the site were phased over 4 different dates with a total of 26 pallets of materials unloaded by forklift.

The works started mid-July with a 7 week schedule to complete the units for the start of the new term at the beginning of September. We worked with the college's electricians to install fire alarms, electric sockets and cat 5 connections. All units were fully installed in just under the seven week schedule.



“The booths Studiospares installed are magnificent; we are delighted with the quality of workmanship and level of soundproofing that they provide; they are truly a wonderful asset to the College.”

Steve Oxlade

Principal

Reigate Sixth Form College, Surrey

Amersham & Wycombe College

"A colleague had already had an Esmono booth installed at home and recommended them highly, so after a visit to the Studiospares website and half an hour with a tape measure, I had determined that the 2m x 2m booth would fit perfectly into the available space in the classroom.

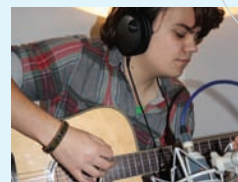
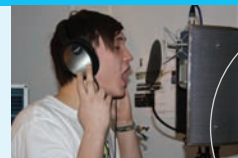
The environment inside is absolutely perfect for recording. I have given the students control over the recording Mac, either outside the booth using an assistant, or using a second VGA monitor attached to the wall and a mouse inside the booth. They have full control over their monitoring via a Behringer headphone amp, a Focusrite preamp, and a selection of microphones.

Overall I couldn't be happier with the booth, as my students are motivated and inspired to create professional demos that give them a greater chance of success in the music industry."

Nick Lindsay

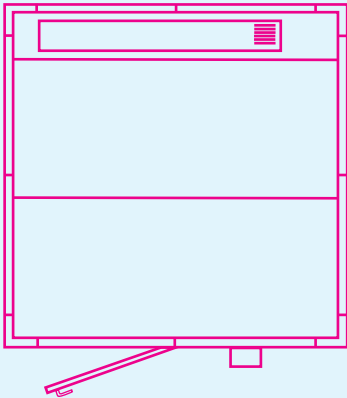
Course Leader

Amersham & Wycombe College

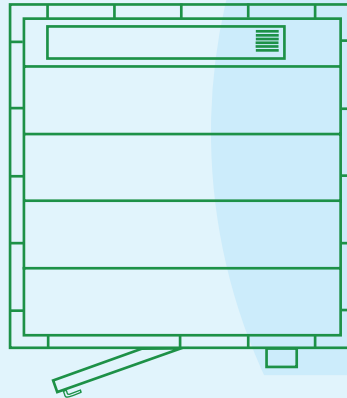


Room Options

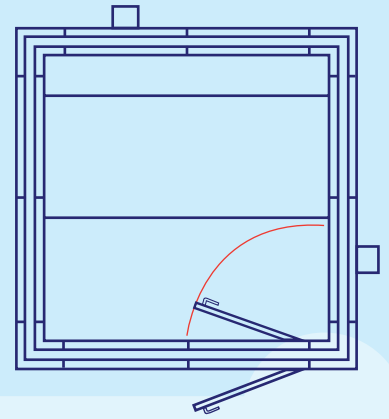
7



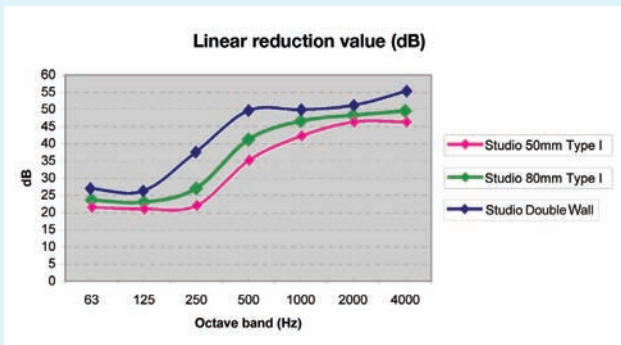
Studio 50mm Type I



Studio 80mm Type I



Studio Double Wall



These 3 plan drawings are examples of the 3 different types of booth. Standard booths have single walls of **50mm** (magenta) or **80mm** (green), while the **Double Wall** booths (blue) offer even higher levels of sound isolation.

All booths are assembled from standard panels, providing a vast range of options of sizes, thicknesses, and door and window positionings. Although the booths are usually 2.2m high, there is also a 2m high option.

Many bespoke booth designs can be created, thanks to the Esmono Room's modular design. Please contact Roy Collins (r.collins@studiospares.com) in the first instance for a quotation or site visit.



Installation

Our Install Team are well versed in solving the specific requirements of the consumer. If there is any complexity with a job, or more than one room, we generally start with a site visit to ensure complete understanding of the customer's needs and make sure there are no hidden snags.

We check sizes, internal and external, access, electricity supply, ventilation required, exact positioning of doors and windows, and much more, and only then do we produce plans and drawings detailing exactly how the room is going to look.

When the team arrive on site to construct the booth, they have all the experience and expertise necessary to build the rooms from start to finish, including floating floors and acoustic finishing. We always leave the room looking and sounding fantastic, but if there is ever a problem in the future, being based in London means we can quickly address the issue.

THE FLEXIBLE ISOLATION SOLUTION

Esmono Sound Isolation Rooms are in use all over Europe. In the UK alone, Studiospares have installed over 200 booths for a wide range of clients including universities, post-production houses, recording studios, television productions and home users. Some of our clients include:

Big Brother, Endemol UK	Lincoln College
Oxford University Press	Brighton TV
GMTV	Westminster University
BBC World Service	Southampton Solent University
Middlesex University	North Devon College
RNIB, Cardiff	St Andrew's University
Channel Four TV Molinare, London	Manchester College of Art and Design
University of East London	Wakefield Girls High School
Soul II Soul Studios	East Norfolk Sixth Form
University of Surrey	Preston College
Pinewood Studios	Teeside University
University of Salford	Markson Pianos, London
Glasgow Caledonian University	Serious Audio Ltd, London
Ministry Of Defence	De Montfort University
Nottingham University	Beacon Centre For The Blind
Right Said Fred, London	Grampian Television
THC-Hempshop, Vienna	Mentorn Films
University of Kent	Warwick University
Cambridge University	Oxford Brookes University

GET IN TOUCH TODAY.

To make an appointment to see - and more importantly, hear - a demonstration of the Esmono Room's capabilities at our premises or to arrange a FREE site visit, contact our Chief Installation Officer **Roy Collins** (email r.collins@studiospares.com).



964 North Circular Road, Staples Corner, London, NW2 7JR, UK.
Tel: 020 8208 9930; Fax 020 8450 4390