

EYE ZONE

B1080P-3



- Full HD WMV9 Digital Signage**
- Supports Multiple Display Zones**
- Supports Log Function**
- Compatible with Windows Media Player 11**
- Supports FTP Auto Download Function**
- Supports HTTP Control Function**



Video Display

(play the stored videos on CF card)

Picture Display

(play picture files (png format) from CF card)

Scrolling Text Bar

(Croatian/ Czech/ Danish/ Dutch/ English/ French/ German/ Greek/ Hungarian/ Italian/ Japanese/ Norwegian/ Polish/ Portuguese/ Slovak/ Spanish/ Swedish)



INTRODUCTION

The Eyezone B1080P-3 is a digital media player that plays media files (supports WMV9 format) from CF memory card without a computer. The Eyezone B1080P-3 supports High Definition movie hardware decode acceleration, presents for you the smoother and clearer picture, it supports high resolution video output such as 1080P / 1080i / 720P for movie theater quality video on a big screen. By connecting to Video, S-Video, Y.Pb.Pr, VGA (resolution up to 1360 x 768), HDMI (1920 x 1080P) and Audio, you can play media files on any display device.

What's more, the Eyezone B1080P-3 supports multiple display zones, you can play movie, picture and scrolling text on the screen simultaneously. The scrolling text displays an animated text message on a bar on bottom of your screen, the information of your product can catch the customer's eyes easily, and the text color can be changed (white/ yellow/ green).

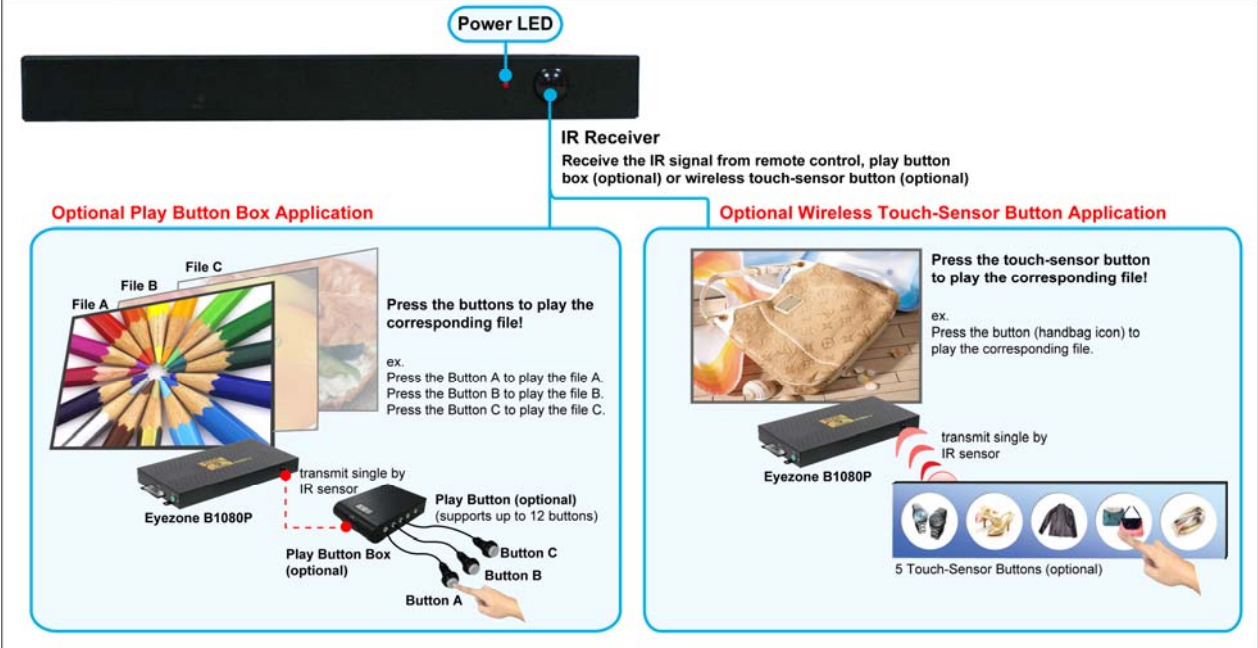
The Eyezone B1080P-3 can connect to a wired network at speed up to 100Mbps. This function provides you with maximum throughput for sharing and transferring digital media.

FEATURES

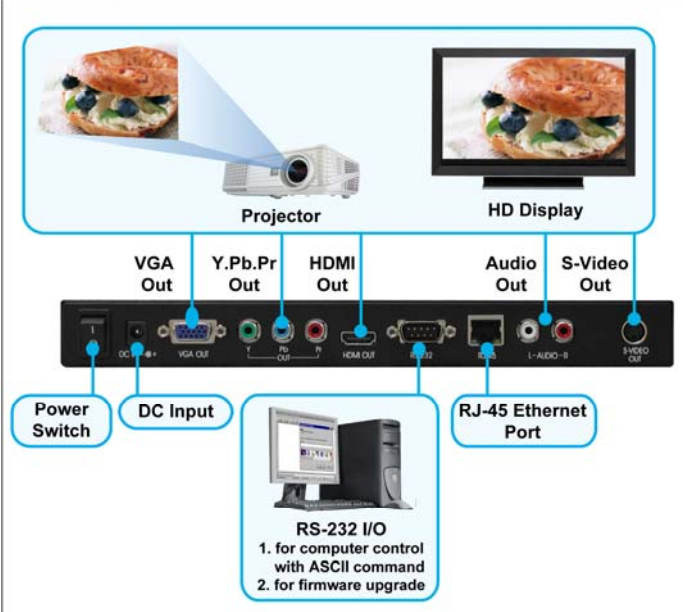
- Supports multiple file formats : Music, Picture, Movie and HD WMV9.
- Supports Video, S-Video, Y.Pb.Pr, HDMI, VGA and Audio output.
- HD Y.Pb.Pr output supports resolution: NTSC Mode(60Hz): 480P/ 720P/ 1080i.
PAL Mode(50Hz): 576P/ 720P/ 1080i.
- HDMI Output: 480P/ 720P/ 1080i/ 1080P.
- VGA output supports resolution: 640x480/ 800x600/ 1024x768/ 1280x1024/ 1360x768.
- Supports RS-232 port for computer control with ASCII command (play, stop, pause...etc).
- **Supports Multiple Display Zones: Displays the movie, picture (supports png format/ size:150x400/ 96DPI) and scrolling text on the screen simultaneously.**
 - **Supports two display modes:**
 - Mode 1: Display the stored videos with scrolling text.
 - Mode 2: Display the stored videos, pictures and scrolling text simultaneously.
 - **The pictures can be repositioned to left or right of the videos.**
 - **The display speed of scrolling text can be adjusted, and scrolling text supports multi languages.**
 1. **Latin 1:** Albanian/ Basque/ Breton/ Catalan/ Danish/ Dutch/ Faroese/ French/ Galician/ German/ Greenlandic/ Icelandic/ Irish Gaelic/ Italian/ Latin/ Luxemburgish/ Norwegian/ Portuguese/ Scottish Gaelic/ Spanish/ Swedish
 2. **Latin 2:** Croatian/ Czech/ Hungarian/ Polish/ Slovak/ Slovenian / Albanian/ English/ German/ Latin
 3. **Japanese**
 4. **Greek**
 - **Two way to put scrolling text:**
 1. **CF Card:** Creates the text file and named "message.txt", then put the file on CF card.
 2. **Web Browser:** Directly type the real-time news (such as airport flight information, weather report, traffic condition or lottery results) via Web Browser.
- **Schedule Function:** The B1080P-3 will auto play the designated file at the designated date.
- Supports **Log Function** which can record the file and time that was be played.
- The source of HD WMV9 MP@HL (Main Profile / High Level) supports resolution up to 1920x1080 (1080P) and the maximum bit rate is 12Mbps.
- Supports CF memory cards. (Suggest using the high speed (150X) CF card)
- **Supports HTTP Command function.**
- **Supports Auto Key Lock function.**
- **Supports Auto Power On/ Off Function:** The B1080P-3 will automatically power on & off at the specify time.
- **Exports the Configuration Value:** You can export the configuration value to the CF card. The configuration value can be modified on your PC, and can be applied to the B1080P-3 or others.
- **Compatible with Windows Media Player 11:** Play media files stored in a network computer.
- **Supports FTP Auto Download Function:** Connect to Remote FTP server and download data to the CF card automatically.
- **Supports Download Pause / Resume Function:** Continue unfinished downloads upon next session.
- Embedded FTP Server.
- Supports NTP Network (G.M.T) Timer. You can also set the system time manually.
- Supports Universal Plug and Play (UPnP) and DHCP.
- **Supports SLIDE SHOW Function** (interval time with 10/ 15/ 30/ 60 seconds).
- **Touch-Sensor Buttons Function (optional):**
 - Press one of the touch-sensor buttons, the B1080P-3 will play the corresponding file automatically.
 - The number of touch-sensor buttons can be customized to 12, 24 or 36 for OEM project.
 - Used with various operating environment (glass, plastics and acrylic material, except metal material), the thickness supports 3mm -5mm, and it can be customized to 5cm for OEM project.
- **PIR Sensor Function (optional):**
 - After sensing approaching subjects, the Eyezone B1080P-3 will play the files automatically.
 - Sensing distance is up to 3 meters with an angle of 45° .
- Connect using an Ethernet network cable at up to 100Mbps.

CONNECTION

FRONT



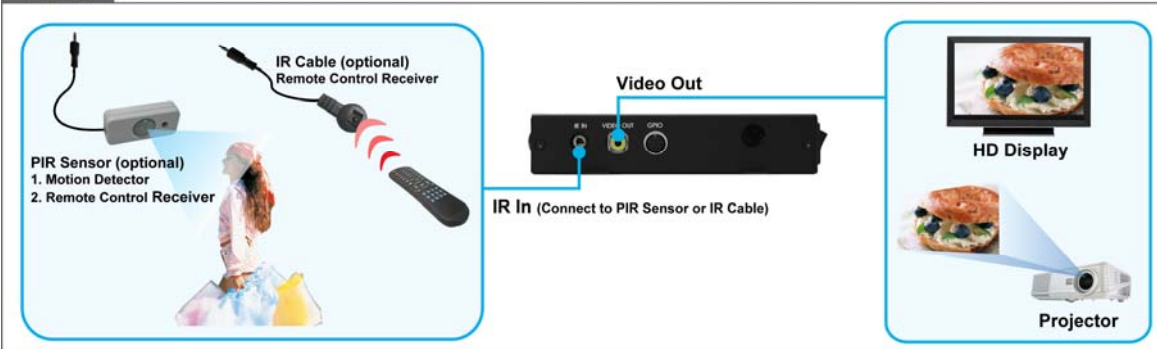
REAR



SIDE



SIDE



PACKAGE CONTENTS

- B1080P-3
- Remote Control
- Audio Cable
- Y.Pb.Pr Cable
- S-Video Cable
- Power Adapter
- User Manual
- Schedule Software



B1080P-3



Remote Control



Audio Cable



Y.Pb.Pr Cable



S-Video Cable



**Power Adapter
(DC 12V, 1.5A)**



User Manual



Schedule Software

MULTIPLE DISPLAY ZONES

Mode 1: Display stored videos with scrolling text.

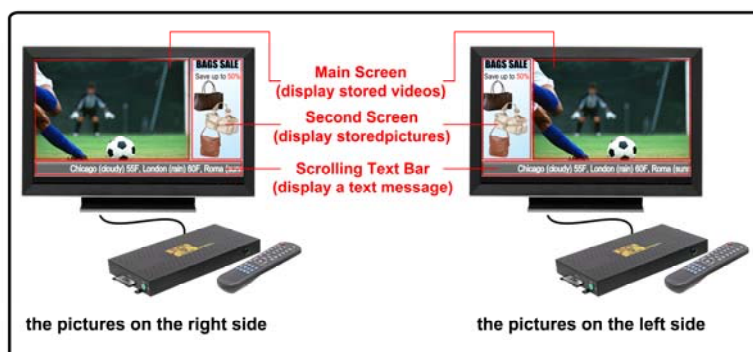
Mode 1



Mode 2: Display stored videos, pictures and scrolling text simultaneously.

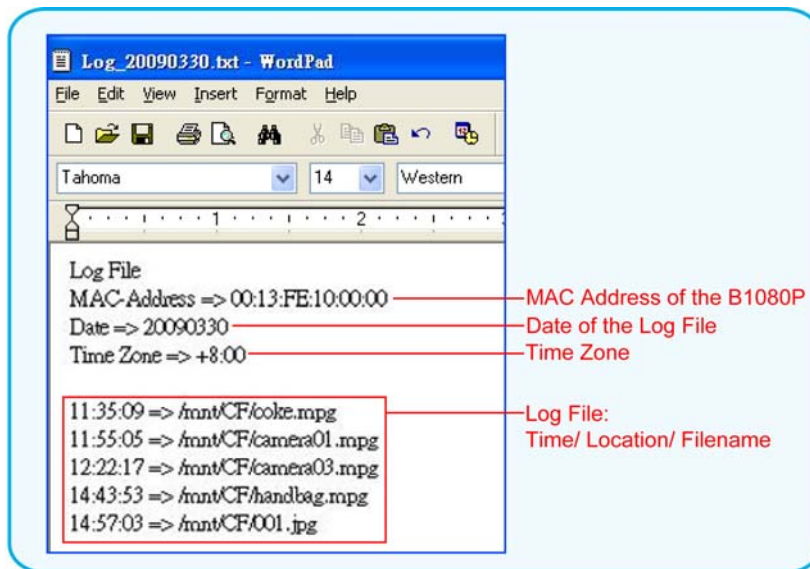
- The pictures can be repositioned to left or right of the videos.
- The display speed of scrolling text can be adjusted.

Mode 2



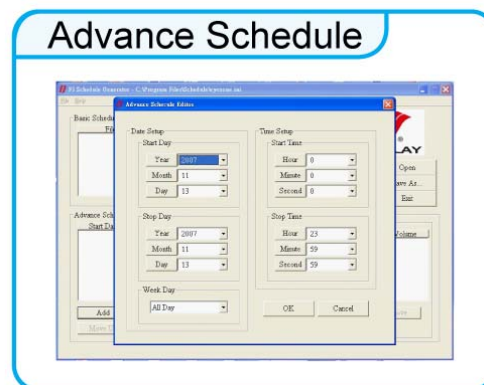
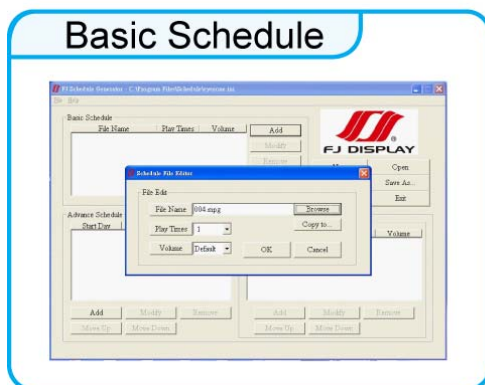
LOG FUNCTION

- Supports **Log Function** which can automatically record the file and time that was be played everyday.
- The log file (.txt) can be viewed on your PC using **WordPad**.



SCHEDULE FUNCTION

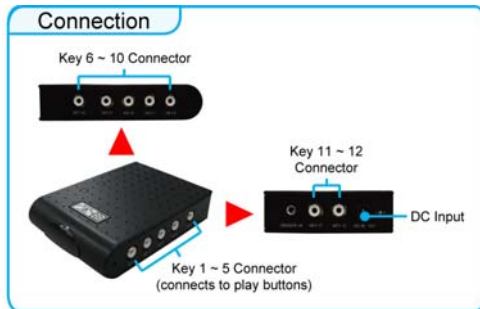
- The Eyezone B1080P-3 will auto play the designated file at the specify date.
- There are two modes: "Basic Schedule" and "Advance Schedule".
 - Basic Schedule: You can select files that you want to play and set up the play times of each file.
 - Advance Schedule: You can select the files that you want to play, and also can set up the play times and the initial and end time of each file.



OPTIONAL AUXILIARY EQUIPMENT

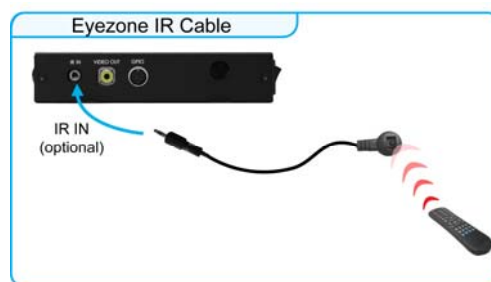
Play Button Box (Eyezone BB)

- The Play Button Box (Eyezone BB) supports up to 12 play-button inputs.
- Press one of the play buttons to play the corresponding file.



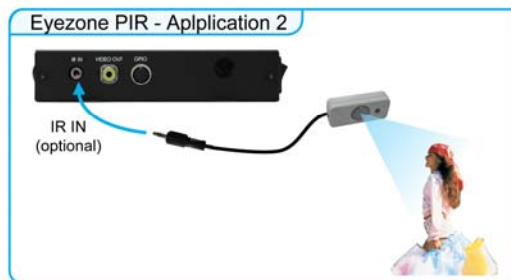
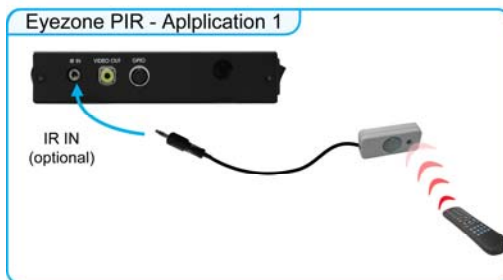
IR Cable

- The IR cable (1 meter) is an external remote control receiver.



PIR Sensor (Eyezone PIR)

- The PIR sensor is not only a motion detector, but also a remote control receiver.
- **Motion Detector**
 - After sensing approaching subjects, the Eyezone B1080P-3 will play the files automatically.
 - Sensing distance is up to 3 meters with an angle of 45



Wireless Touch-Sensor Buttons

- Press one of the touch-sensor buttons, the B1080P-3 will play the corresponding file automatically.
- **Wireless Mode:** The sensing distance is up to 3M.

