



**MISSISSIPPI STATE
FIRE ACADEMY**

**ANNUAL
REPORT**

FY 2016

DIVISION OF THE MISSISSIPPI INSURANCE DEPARTMENT

Mississippi State Fire Academy Advisory Board

President of the
Mississippi Fire Chiefs Association
Chief Mike Beyerstedt

President of the
Mississippi Fire Fighters Association
Chief John Pope

State Fire Marshal's Office
Chief Deputy Ricky Davis

President of the
Mississippi Association of Supervisors
Ms. Connie Rocko

President of the
Mississippi Municipal League
Mayor Jimmy Clyde

Manager of the
State Rating Bureau
Mr. Joe Shumaker

Index

Advisory Board.....	2
Index.....	3
Executive Summary.....	4
From Executive Director Reggie Bell.....	5
Introduction.....	6
Campus Facility.....	7-10
Staffing.....	10
Organizational Chart.....	11
State Fire Academy of Mississippi Financial Statement.....	12
Grant Information.....	13
Statistics.....	14
Students Trained by County of Sending Organization.....	15
Certification Bureau.....	16-17
Extension Services Bureau.....	18-19
Special/Industrial Bureau.....	20-21
Other Training & Services.....	22-23
Adjunct Instructors.....	24
Specialized Outside Professional Instructor Affiliations.....	25
Organizational Affiliates.....	26
FY 2016 Participation Report by Type of Program.....	27-32
FY 2016 Participation Report by Organization.....	33-50



It is with great pleasure that I present to you the 2016 Annual Report of the Mississippi State Fire Academy. Two thousand sixteen was a tremendous year for the Academy, marked by major accomplishments that promote our commitment to excellence and our dedication to service.

We would like to thank you for your continued support of the fire service in the State of Mississippi and the State Fire Academy as we continue to be one of the nation's best fire and emergency response training centers.

Executive Director

From Executive Director Reggie Bell

When the Mississippi legislature created the Mississippi State Fire Academy and designated it as the agency for training the state's fire personnel, I am certain they could not have foreseen the growth and progress that would shape the Academy as it exists today. Many changes have occurred in the forty years since the Academy was built. We now train approximately 15,000 students per year by offering more than ninety courses, many with multiple deliveries, and many offered both on campus and off-site through our field delivery program. Our students come from career and volunteer fire departments throughout Mississippi, fire departments outside the state, and even from the private sector. Over the years, business and industrial entities including many Fortune 500 companies have entrusted the Mississippi State Fire Academy with training their employees in fire and emergency response.

Certainly, technology has advanced tremendously in the last forty years, and the Mississippi State Fire Academy remains at the forefront of that advancement. Classrooms and other facilities on campus are equipped with wireless Internet, webcasting, and teleconferencing capabilities. These assets provide us the flexibility to innovate our instruction methods and course delivery platforms as the needs of the students, and the departments and communities they serve, change. We are also well-positioned to continue to adapt in a constantly evolving technological world.

In addition to training those who seek careers in fire fighting and emergency response, we consider it a vital part of our mission to educate ordinary Mississippi citizens about fire prevention and safety. To that end, we offer schools, clubs, and civic groups the opportunity to visit our campus, tour the facilities, and learn how they can help minimize the potential for loss of life and property due to fire. There is no charge for these tours.

A program that has gained tremendous attention is our Fire Academy for Elected/Public Officials. This program is designed to be a fun day. It familiarizes the elected/public officials with the basic duties and operations of their local fire departments. Elected/public officials from state, municipal, and county governments have attended this one-day course. Fire departments have benefitted from the experience and knowledge their government leaders gain in this course.

I am proud to say that for over forty years, the Mississippi State Fire Academy has been and will be...

"Making a Difference When It Matters the Most..."





Introduction

State Fire Academy Mission Statement

To serve the Mississippi Fire Service Community and the World by providing quality education and training in fundamental and advanced skills to save lives and property.
"Making A Difference When It Matters The Most!"

Enabling Legislation

MS Code Annotated Section 45-11-7:

The State Fire Academy was created for the purpose of training and education of persons engaged in municipal, county and industrial fire protection.

The Academy is officially designated as the agency of this state to conduct training for fire personnel on a statewide basis to all duly constituted fire departments.

MS Code Annotated Section 45-11-5:

Creation of a separate account known as the "State Fire Academy Fund" for the deposit of a tax of one-half of one percent (1/2 of 1%) of the gross premium receipts of fire insurance policies levied in the state.

Senate Bill 2362 of the 2016 Regular Legislative Session:

The above legislation changed the direction of the funding received by the Fire Academy to go to the state general fund effective July 1, 2016, in addition to diverting all cash in the account to the state general fund.

MS Code Annotated Section 45-11-7:

The Academy is designated as a division (sub agency) of the Insurance Department.

MS Code Annotated Section 45-11-203:

Within one year of employment, all paid full time fire fighters shall be certified as completing the mandatory training requirements administered by the State Fire Academy.

MS Code Annotated Section 83-1-39:

Requires one member of the sheriff's department to be the county fire investigator and to attend training at the State Fire Academy in arson investigation.

Philosophy

The State Fire Academy is committed and responsible for the training and education of personnel engaged in municipal, county and industrial fire protection. This student body consists of career, volunteer and industrial fire personnel. The Academy has three training areas, which are 1) Certification Services 2) Extension Services and 3) Industrial and Special Services, which all focus on the Academy's only function, which is training. All other areas support the staff and students of these training areas.

The Academy's philosophy is to deliver quality training and instruction to the fire service/emergency response personnel of the State, while adhering to high ethical standards, promoting cooperation among staff with efficiency and integrity in their work while representing the Academy in a professional, courteous, and helpful manner at all times, and safeguarding the assets of the State. The Academy is committed to providing excellent service to its customers by providing training based on National Fire Protection Association (NFPA) standards as well as specialized courses not addressed by NFPA.

Statewide Goal and Benchmark

Public Safety and Order

To protect the public's safety-by providing training to first responders/emergency responders.

The training students receive from the Academy provides them the skills necessary to save lives and property, which will in turn, lower the insurance fire rating which determines the premium rates on business and homeowner's insurance.

Campus Facility:

Construction began in 1974, on the Academy campus in Rankin County, Mississippi. The campus is currently located on approximately 112 acres with more than twenty buildings. Courses are offered to students on or off-campus. Course length can vary from one hour to seven weeks. If on-campus, students may elect to stay in the dormitory, which has seventy-five beds, and they are provided two meals a day in the cafeteria. We currently have seven classrooms, and a dedicated student computer lab/library, in addition to the exercise area for students in the dormitory. Multiple training areas on campus include the following:



A Trench Rescue and Emergency Shoring Prop consists of approximately seventy feet of space for practice in emergency shoring techniques and to allow several scenarios for rescue operations. The prop was a generous donation of equipment, labor, and material from the Associated General Contractors of Mississippi-Municipal Contractors Division. The value of the prop is estimated at a quarter of a million dollars.



The Fire Research Building simulates a three-story residential structure with an attic, and a commercial structure with a basement. The building contains over 4,000 square feet of training space and is equipped with five computer controlled fire/smoke rooms with liquid propane gas fueled fire simulators, a Class A burn room, and a prop that simulates a couch fire with flashover capabilities. A four (4) story drill tower is attached to the burn area.



The original Burn Building has four levels and simulates residential and commercial buildings. This building is currently being utilized as a self contained breathing apparatus (SCBA) training area and collapse rescue training building. The SCBA training area utilizes mazes and artificial smoke for training. The collapse rescue area of the building simulates collapsed ceilings, walls, and floors.



The five-story drill tower provides opportunities for high-rise ladder, rope and firefighting operations. In addition to this tower, there is a communications tower erected for training high angle rescue purposes.



The live burn area consists of five large concrete pads as well as one 5,000 square foot airliner fuselage flammable liquid/LP gas burn prop designed specifically to prevent environmental contamination. These training areas include: a fifty foot flowing fuel fire (LP gas Christmas tree fire); LP gas tank fire; pump seal fire; twenty foot vertical tank fire with exposures; horizontal tank fire with an exposed small tank truck; and a three story evolution simulating a chemical processing plant fire.



The hazardous materials training site consists of a large train derailment simulation with eleven cars.



Two lakes are on campus. One is forty feet deep and is utilized for dive rescue training. The other lake is used as a water source for pump testing fire apparatus.



The confined space training site has over 9,000 cubic feet of enclosed area and a forty-five foot tower. The underground area includes vents and drains with several emergency entries/exits.

A forty-one by fourteen foot water vessel is dry docked for the instruction of offshore personnel.



An arson lab is used to build real life room-like structures with furniture to train in arson detection.



Five aircraft simulators are used in the instruction of aircraft rescue training. A landing gear simulator is at this site along with a side-wall aircraft section used in training. We are recognized by the Federal Aviation Administration as an approved training site for this region. Students from all over the United States attend these courses for the required annual training to be in compliance with the FAA regulations.



The Fire Education and Safety Auditorium will seat up to 300 people and is used for graduations and large meetings of the fire service.



New Classroom Building: Two of the classrooms are theatre style that will seat 50 each, while the other two classrooms are traditional with seating capacity of 30 each. Each of the classrooms has the latest technology for course instruction and wireless capabilities.

Future Enhancements:



Progress is being made on the construction of a new training prop, Structural Collapse Rescue. The prop was designed by staff members and most work is being performed by staff. This prop will consist of material to simulate a collapsed building consisting of concrete, masonry, brick, wood and metal. The training will consist of rescue personnel digging, bracing, shoring, and removing victims of the collapse. Heavy machinery such as bulldozers, backhoes, and cranes will be utilized to remove the debris for the safe rescue training.



The National Natural Gas Association, along with Mississippi 811, and the Mississippi Public Service Commission and several energy companies, have begun the construction process for erecting the “Mississippi Safety City” on the Academy campus. The Mississippi Safety City is a one-of-a-kind, small scale city encompassing two acres that will serve as a training facility for natural gas operators, emergency response personnel, and industrial technicians. The city will contain homes, streets, streetlights and natural gas pipelines. Training will include classroom settings as well as real life simulations of natural gas eruptions and responses, and inspection techniques of gas systems. The estimated cost of this project is one million dollars, which will be donated by the sponsors.

Originally, the Academy was one hundred percent (100%) special funded through an insurance premium tax on insurance policies sold in the state, and course collection fees. Senate Bill 2362 of the 2016 Regular Legislative Session changed the direction of the funding received by the Fire Academy to go to the state general fund effective July 1, 2016, in addition to diverting all cash in the account to the state general fund. Additionally, grant funding is requested and often times received for training emergency response personnel on a statewide basis at little to no cost to the departments/counties.

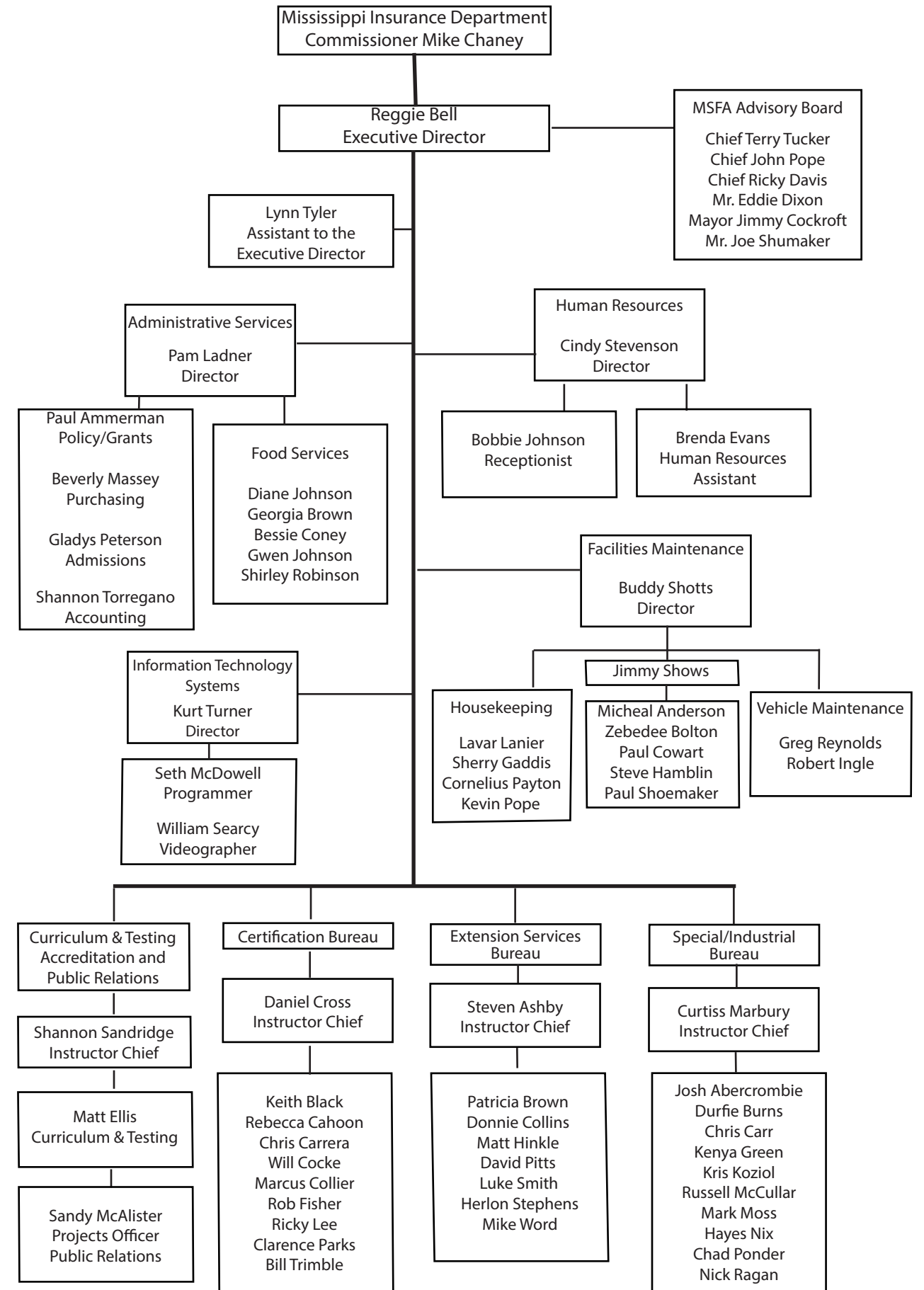
Staffing:

The Academy operates the facility with sixty-three (63) staff members in the following areas:

- Administrative
- Human Resources
- Minimum Standards and Certification Board Secretary
- Information Technology and Videography
- Building, Maintenance, and Vehicle
- Housekeeping
- Cafeteria
- Curriculum/Accreditation and Public Relations
- Instructional Bureaus—Certification, Industrial/Special, Extension Services

The Office of Administrative Services is responsible for the day to day operations of the Academy, student training records and course registration. Human Resources is responsible for staff recruitment, staff training and all employee benefits. The Secretary for the Minimum Standards Board is responsible for all functions related to Board activities. The Informational Technology and Videography Bureau is responsible for all computer systems for staff, the Learning Resource Center for students’ use, custom programming for staff, and videos of class training. The Building, Maintenance, and Vehicle Bureau is responsible for maintaining and repairing all of the agency buildings, equipment, and training props as well as all vehicles owned by the Academy, including Fire Apparatus. Housekeeping is responsible for maintaining the cleanliness of all the buildings, checking students into the dormitory, issuing linens, cleaning rooms, and assisting in grounds keeping when necessary. The Cafeteria Staff is responsible for serving two meals a day to students. The Instructional Bureaus are responsible for all areas of training offered while the Curriculum/Accreditation and Public Relations Bureau is responsible for course accreditation, testing, tours, fire education safety seminars, and publications.

ORGANIZATIONAL CHART



Fund Balance Financial Statement
July 1, 2015 to June 30, 2016

Grant Information
Fiscal Year 2016

Beginning Fund Balance July 1, 2014:	\$3,619,883.43
Income/Revenue Collections:	
Fire Tax Receipts	\$6,692,226.58
Course Fees and Memorabilia Sales	\$1,142,314.65
Sub Grant Funds-Passed through Other State Agencies	\$ 308,501.42
Transfers from Other Agencies-Non Grant	\$ 75,210.76
Federal Grant Funds-Direct	\$ 38,901.75
Sales of Personal Property	\$ 5,626.75
Other Miscellaneous Income	\$ 1,813.22
Budget Cut-Revenue Cash Submission	(\$ 113,650.00)
Total Income/Revenue Collections:	\$8,150,945.13
Expenses:	
Salaries, Wages, Fringe Benefits	\$3,980,834.88
Travel	\$ 39,269.00
Contractual Services	\$ 532,129.87
Commodities	\$ 523,854.88
Equipment Purchases	\$ 94,240.50
Vehicles	\$ 21,654.00
Capitol Outlay-Improvements	\$ 26,786.00
Resale Merchandise and Transfer to Other Funds	\$ 56,790.41
Total Expenses:	\$5,275,559.54
Ending Fund Balance June 30, 2016:	\$6,495,269.02
Special Fund Cash Balance Transferred to General Fund	\$6,072,682.59
Balance in Federal Fund	\$ 422,586.43

The Academy received grant funds directly from the Federal Emergency Management Agency/National Fire Academy. This grant was utilized to pay for deliveries state wide of programs offered by the National Fire Academy.

Grant Funds Received: \$19,492.64
Deliveries Offered: 5
Students Participating: 123

The Mississippi Office of Homeland Security under the MS Department of Public Safety, awarded grant funds from the State Homeland Security Program. This grant was utilized for on campus and field delivery programs that have been approved through the Office of Domestic Preparedness. Courses offerings include Rope Rescue, Confined Space Rescue, Hazardous Materials Awareness/Operations, Hazardous Materials Technician, Trench Rescue, and NIMS courses.

Grant Funds Received: \$199,362.28
Deliveries Offered: 29
Students Participating: 476

The Mississippi Emergency Management Agency awarded grant funds from the Hazardous Materials Emergency Preparedness, under the U S Department of Transportation. This grant was utilized for the delivery of Hazardous Materials Technician I, Hazardous Materials Technician II, Hazardous Materials Awareness/Operations, and Fire Chemistry.

Grant Funds Received: \$108,682.01
Deliveries Offered: 17
Students Participating: 322

The Mississippi Liquefied Compressed Gas (LC Gas) Board of the Mississippi Insurance Department provided PERC grant funds for classes statewide to help emergency responders better understand the hazards of LP gases and prepare for the response to uncontrolled release of LP gas or fire.

Grant Funds Received: \$50,000.00
Deliveries Offered: 17
Students Participating: 717

MS Code Annotated Section 45-11-5:

Creation of a separate account known as the "State Fire Academy Fund" for the deposit of a tax of one-half of one percent (1/2 of 1%) of the gross premium receipts of fire insurance policies levied in the state.

Senate Bill 2362 of the 2016 Regular Legislative Session:

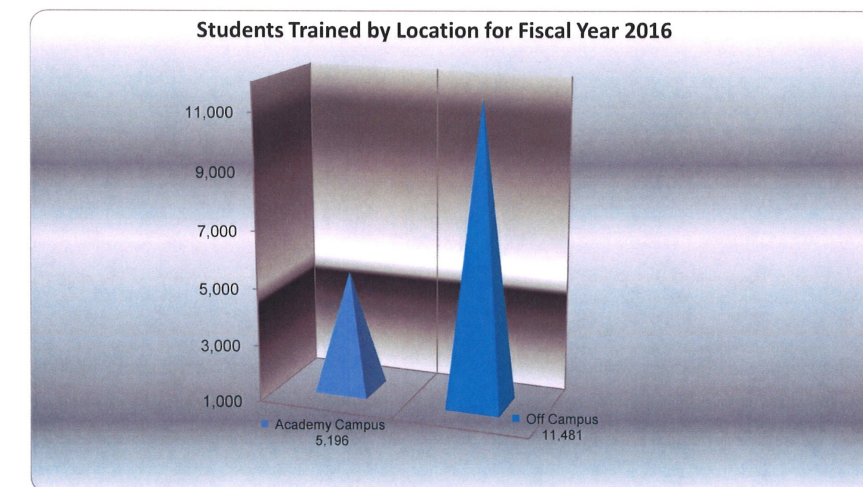
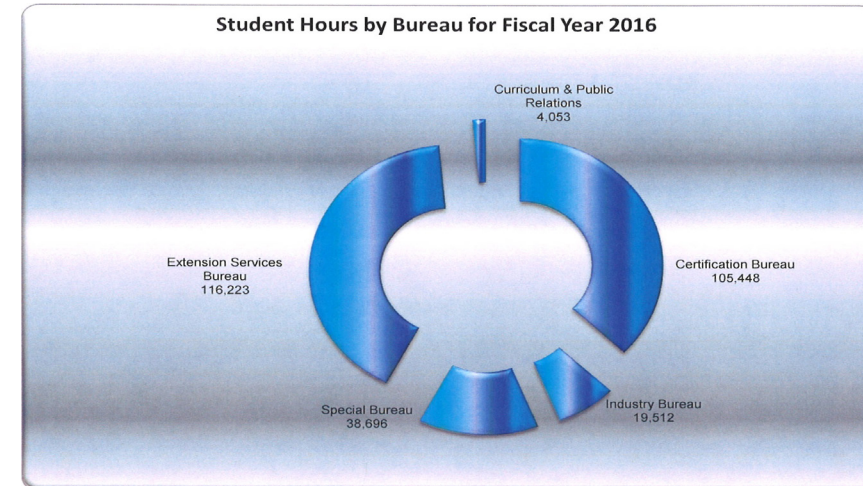
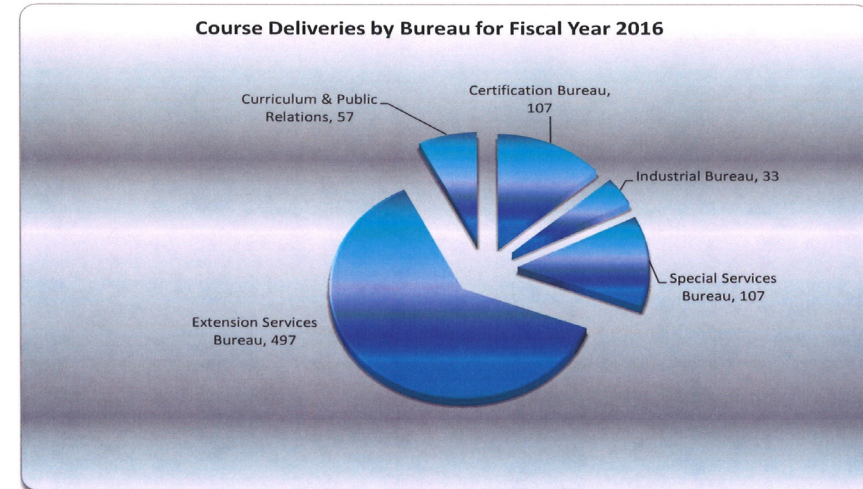
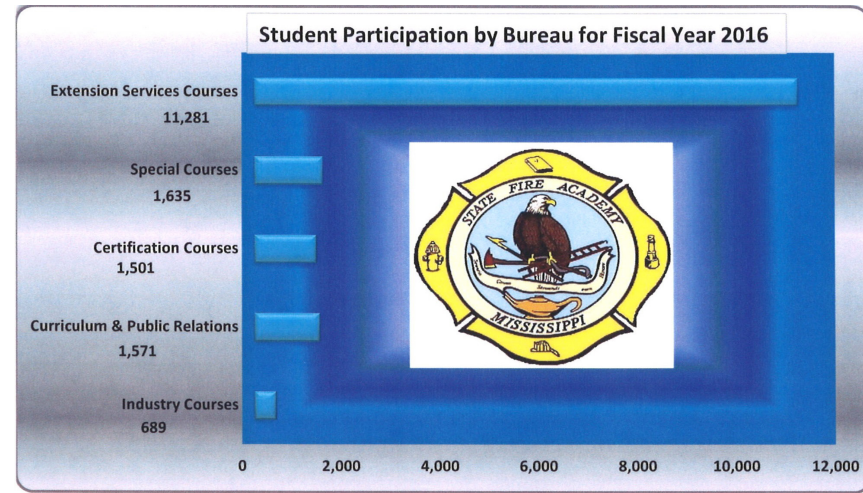
The above legislation changed the direction of the funding received by the Fire Academy to go to the state general fund effective July 1, 2016, in addition to diverting all cash in the account to the state general fund.

MS Code Annotated Section 45-11-7 (1):

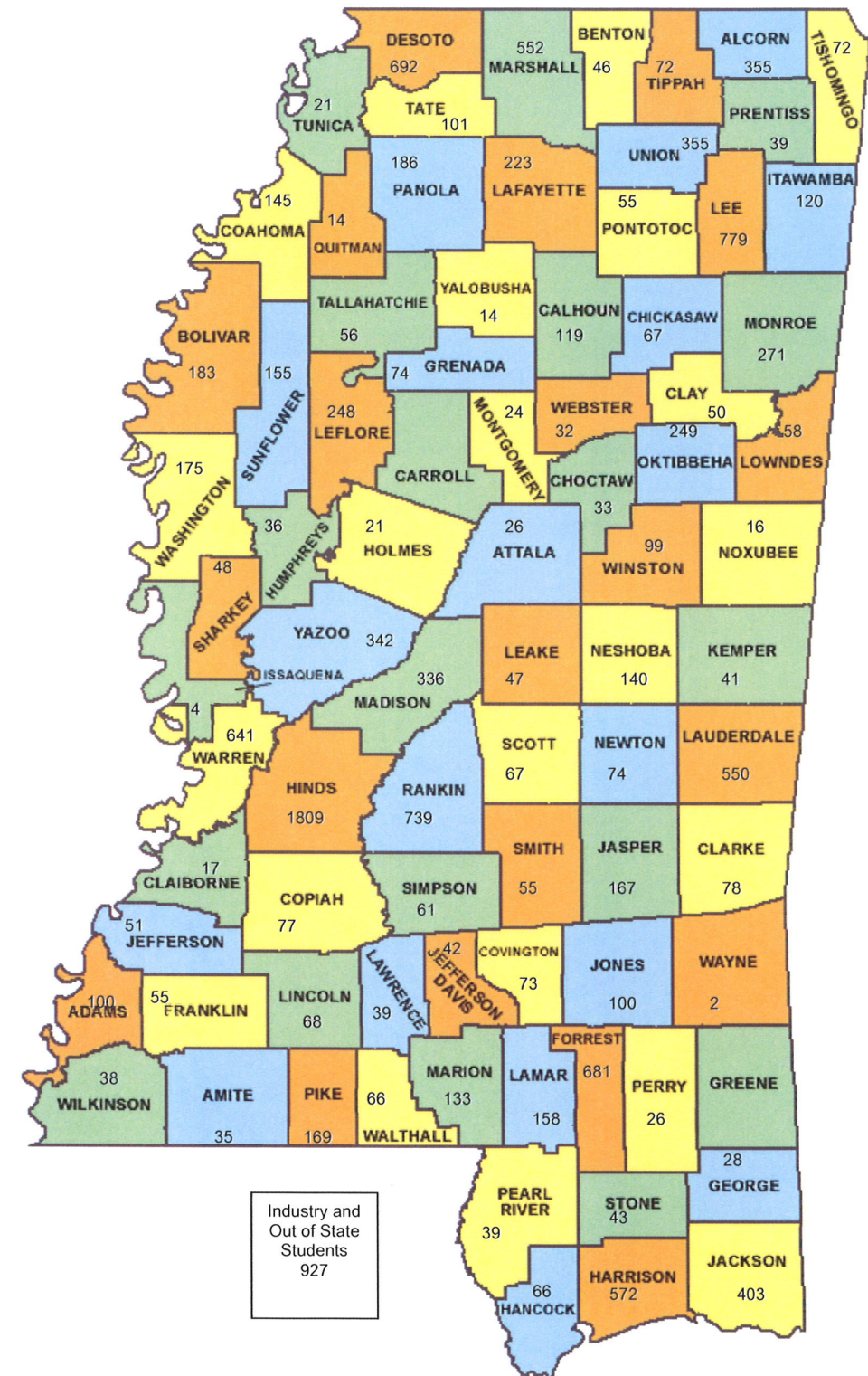
The State Fire Academy was created for the purpose of training and education of persons engaged in municipal, county and industrial fire protection.

The Academy is officially designated as the agency of this state to conduct training for fire personnel on a statewide basis to all duly constituted fire departments.

The Commissioner of Insurance may establish and charge reasonable fees for the training programs and other services provided by the Academy.



Students Trained by County of Sending Organization Fiscal Year 2016





CERTIFICATION SERVICES BUREAU

- Courses are designed to provide career, combination, and volunteer fire departments a wide range of programs that conform to National Fire Protection Association (NFPA) standards.
- Most courses have obtained International Fire Service Accreditation Congress (IFSAC) and National Board on Fire Service Professional Qualifications (PROBOARD) accreditation.
- Course deliveries consist of campus, field, contract programs, and distant learning programs.



-
- Emergency Medical Care
 - Engine Company Operations
 - Fire Department Safety Officer 1521
 - Fire Fighter 1001-I-II
 - Fire Fighter 1001-I-II: Field Course
 - Fire Inspector 1031-I
 - Fire Inspector 1031-II
 - Fire Investigator 1033
 - Fire Officer 1021-I-II
 - Fire Officer 1021-I-II: Distant Learner
 - Fire Officer 1021-I-II: Field Course
 - Fire Service Chaplain
 - Fire Service Instructor 1041-I
 - Fire Service Instructor 1041-II
 - Fire Service Instructor 1041-III
 - Fire Service Instructor 1041-I: Field Course
 - Fire Service Instructor 1041-I: Online
 - Fire Service Instructor 1041-II: Distant Learning
 - How To Develop And Assist In Fire Fighter Physical Fitness Programs
 - Mississippi County Fire Investigator
 - Mississippi County Fire Investigator: Annual-In-Service
 - Mississippi Executive Fire Officer Program/Fire Officer 1021-III-IV



EXTENSION SERVICES BUREAU

- Most courses are designed to be presented to the volunteer fire fighter.
- Utilizes a cadre' of adjunct instructors to present training programs across the state.
- Administers the National Fire Protection Association (NFPA) 1002 Driver/Operator and National Fire Protection Association (NFPA) 1003 Airport Fire Fighter which hold International Fire Service Accreditation Congress (IFSAC) and National Board on Fire Service Professional Qualifications (PROBOARD) Accreditation.
- Liaison between the Mississippi State Fire Academy and the National Fire Academy.



- Advanced Volunteer Firefighter**
- Aircraft Rescue & Fire Fighter Refresher**
- Airport Fire Fighter NFPA-1003**
- Annual National Fire Academy Weekend**
- Back-To-Basics: Fire Company Fireground Skills Refresher**
- Certified Fireground Resource Technician: Modules I-II**
- Certified Rural Fire Apparatus-Driver/Operator-I**
- Driver/Operator NFPA 1002: Aerial Apparatus Field Evaluation**
- Driver/Operator NFPA 1002: Pumper Apparatus Field Evaluation**
- Driver/Operator NFPA 1002: Pumper Apparatus On-Campus Course**
- Emergency Response To Terrorism: Basic Concepts**
- Fire Academy For Elected/Public Officials**
- Fire & Life Safety Educator 1035-I-II-III**
- Fire Fighter Strategies, Tactics and Techniques**
- Hazardous Materials NFPA 472 Awareness/Operations Module 1-2 (Non-IFSAC/PROBOARD)**
- Inter-Departmental Courses (13)**
- Liquefied Petroleum Gas Tactics & Live Fire Drill**
- Managing The Rural Emergency Incident**
- Mississippi Certified Volunteer Fire Fighter I - Module 1**
- Mississippi Certified Volunteer Fire Fighter I - Module 2**
- Mississippi Certified Volunteer Fire Fighter II - Module 1**
- Mississippi Certified Volunteer Fire Fighter II - Module 2**
- Mississippi Chief Fire Officer Designation Program**
- Mississippi Fire Chief Designation Program**
- Mississippi Volunteer Fire Officer-I**
- Mississippi Volunteer Fire Officer-II**
- National Fire Academy Courses (8)**
- Passenger Bus Rescue & Incident Management (Field Delivery)**
- Public Information Officer NFPA 1035**
- Regional Training Courses (21)**



SPECIAL/INDUSTRIAL SERVICES BUREAU

- Programs are generally formatted around the subject of industrial incipient firefighting, technical rescue, and hazardous materials response.
- Most courses have obtained International Fire Service Accreditation Congress (IFSAC) and National Board on Fire Service Professional Qualifications (PROBOARD) accreditation.
- Most special course student fees are supported with federal grant funds.
- Specializes in technical programs geared towards fire department training.
- Program delivery consists of on-campus and off-site programs.



Certified Advanced Rescue Specialist (CARS)

Confined Space Rescue Levels I-II

Confined Space Rescue: Modules 1-4

Fire Service Management-101

Firefighter Intervention Rescue Survival Techniques (FIRST)

Fireground Leadership

Hazardous Materials Awareness And Operations NFPA 472

Hazardous Materials Technician Field Delivery NFPA 472

Hazardous Materials Technician-I NFPA 472

Hazardous Materials Technician-II NFPA 472

Incipient And Structural Fire Brigade Training Programs: Modules I-V

Industrial Fire Fighter Refresher Training

Industrial On-Site Training Programs

NFA Chemistry Of Hazardous Materials: Fire Chem I

Rescue Refresher

Rope Rescue I: Modules 1-4

Rope Rescue Level-I

Rope Rescue Level-II

Smoke Diver

Swift Water & Swiftwater Rescue Levels 1-2

Trench Rescue & Emergency Shoring Levels I-II

Vehicle Extrication & Rescue Levels I-II

OTHER EXTENSION SERVICES



FIRE PUMP REBUILDING CLASS



Fire Apparatus Testing



The Curriculum/Testing Bureau handles all aspects of testing and accreditation for all of our certification programs. We currently have 24 levels of certification accredited by the International Fire Service Accreditation Congress (IFSAC) and 30 levels of certification accredited by the National Board on Fire Service Professional Qualifications (PROBOARD). The majority of our programs are dually accredited. All of our programs are based on National Fire Protection Association Standards.

Administers the Candidate Physical Ability Test (CPAT) examination for the Mississippi Fire Personnel Minimum Standards and Certification Board (MSCB).



Our facility is also available for public tours. Scheduled tours can be arranged for most types of educational, civic, and special groups. An age appropriate fire prevention/safety information program is delivered to each group along with a tour of the campus. There is no charge for the tours.



The Mississippi State Fire Academy Honor Guard was established in 2008 to serve the fire fighters around the state in their time of need, to help remember and memorialize any fire fighter that serves or served this great state as a token of our appreciation on a state level

Adjunct Instructor Affiliations Fiscal Year 2016



The Academy contracted with the following individuals for course deliveries during the fiscal year.

Matt Bailey	Johnny Leos
Steve Bardwell	Turner Luttrell
Justin Bouler	Tommy Malone
Charles Brown	Jerry Mills
Finley Brown	Stephen Moore
James Bunyard	Vernon Morris
Robert Bush	Craig Nash
David Chance	Robert Parker
Austin Check	John Pope
Pierce Clark	Kevin Reeves
Charles Collins	Jeffrey Roy
Phillip Cummings	Lonagcia Smith
Byran Cunningham	Raleigh Sprouse
Michael Dimartino	Adam Stone
Dustin Eaves	Steven Thomas
Juan Garza	Karl VanHorn
Michael Gettinger	Larry Warrington
Kendall Golden	Michael Watts
Ginger Hand	David Webster
Kenneth Holbrook	Mark Whiteside
Robert Hutto	William Wilmoth
Tom Lariviere	Craig Woodard

Specialized Outside Professional Instructor Affiliations Fiscal Year 2016

The Academy contracted with the following professional instructors/organizations utilizing grant funding, for course deliveries during the fiscal year.

Bryan Adams
D2000 Safety Inc.
David Matthew
Edward Kensler, Jr.
FLS Risk Services
James Byrned
Johnny Purvis
Kenneth Bush
Patrick Butler
Philip Davis
Steve Bardwell

Organizational Affiliations

Much of the development and improvement of a successful training program comes as the direct result of dialogue established with other persons in the business. The members of the State Fire Academy staff are affiliated with many related organizations and thus have opportunities to share ideas. Following is a list of organizations staff members are involved in.

- ARFF (Aircraft Rescue and Fire Fighting) Working Group
- International Association of Arson Investigators
- International Association of Fire Chiefs
- International Code Council
- International Fire Service Accreditation Congress (IFSAC)
- Mississippi Administrative Assistants Emergency Services Association
- Mississippi Association of Governmental Purchasing and Property Agents
- Mississippi Association of Personnel Administrators
- Mississippi Association of Public Fire Safety Educators
- Mississippi Chapter of International Association of Arson Investigators
- Mississippi Fire Chiefs Association
- Mississippi Fire Fighters Association
- Mississippi Fire Service Instructors Association
- National Association of Arson Investigators
- National Fire Protection Association
- North American Fire Training Directors Association
- RopeLab
- Society for Human Resource Management
- The ProBoard (National Professional Qualifications Board)



2016 PARTICIPATION REPORT BY TYPE OF PROGRAM

Certification Services Bureau

Course Name	Student Count
CPAT EXAM	274
DRONE - FFA	29
FIRE DEPARTMENT SAFETY OFFICER 1521	34
FIRE DEPARTMENT SAFETY OFFICER 1521 FIELD DELIVERY	8
FIRE FIGHTER 1001-I-II	181
FIRE FIGHTER 1001-I-II FIELD DELIVERY	76
FIRE INSPECTOR 1031-I	25
FIRE INSPECTOR 1031-II	13
FIRE INVESTIGATOR 1033	54
FIRE OFFICER 1021-I	11
FIRE OFFICER 1021-I FIELD DELIVERY	1
FIRE OFFICER 1021-I-II	50
FIRE OFFICER 1021-I-II FIELD DELIVERY	39
FIRE OFFICER 1021-II	6
FIRE SERVICE INSTRUCTOR 1041-I LEVEL I	71
FIRE SERVICE INSTRUCTOR 1041-I DISTANT LEARNING	3
FIRE SERVICE INSTRUCTOR 1041-I ON-LINE	30
FIRE SERVICE INSTRUCTOR 1041-I FIELD DELIVERY	38
FIRE SERVICE INSTRUCTOR 1041-II LEVEL II	20
FIRE SERVICE INSTRUCTOR 1041-II DISTANT LEARNING	4
FIRE SERVICE INSTRUCTOR 1041-II FIELD DELIVERY	9
FIRE SERVICE INSTRUCTOR 1041-III	8
HAZ MAT NFPA 472 OPERATIONS W/PPE & PRODUCT CONTROL	193
HAZ MAT NFPA 472 OPERATIONS W/PPE & PRODUCT CONTROL FIELD DELIVERY	65
HOW TO DEVELOP/ASSIST IN FF PHYSICAL FITNESS PROGRAMS	12
IS 100: INTRODUCTION TO ICS	252
IS 200: ICS FOR SINGLE RESOURCE AND INITIAL ACTIONS	252
MISSISSIPPI CERTIFIED VOLUNTEER FIRE FIGHTER - NFPA 1001-BASED	1
MISSISSIPPI COUNTY FIRE INVESTIGATOR	6
MISSISSIPPI COUNTY FIRE INVESTIGATOR: ANNUAL IN-SERVICE	53
MISSISSIPPI EXECUTIVE FIRE OFFICER 1021-III-IV	16
MISSISSIPPI EXECUTIVE FIRE OFFICER 1021-III-IV MODULE 3	16



2016 PARTICIPATION REPORT BY TYPE OF PROGRAM

Extension Services Bureau

Course Name	Student Count
ACTIVE SHOOTER	90
ADVANCED VOLUNTEER FIRE FIGHTER	13
AIRCRAFT RESCUE FIRE FIGHTER REFRESHER TRAINING (3-HOUR)	288
AIRCRAFT RESCUE FIRE FIGHTER REFRESHER TRAINING (6-HOUR)	57
AIRPORT FIRE FIGHTER	46
APPARATUS PUMP OPERATOR-MODULE 1: BASICS	133
APPARATUS PUMP OPERATOR-MODULE 2: MWS	108
ATMOS ENTERGY NATURAL GAS 101 FOR FIRE FIGHTERS	295
AUTISM AWARENESS FOR THE FIRST RESPONDERS	86
AUTOMOBILE EXTRICATION	213
BASIC AERIAL OPERATIONS: ANNUAL REFRESHER	26
BASIC RESCUE OPERATIONS	122
CALLING THE MAYDAY I	19
CALLING THE MAYDAY II	19
CAMPUS FIRE & LIFE SAFETY I: RISK ASSESSMENT	24
CERTIFIED FIREGROUND RESOURCE TECHNICIAN-MODULE 1	3
CERTIFIED FIREGROUND RESOURCE TECHNICIAN-MODULE 2	3
CERTIFIED RURAL FIRE APPARATUS-DRIVER/OPERATOR-I	60
COMMUNITY EMERGENCY RESPONSE TEAMS	46
CORRECTIONAL FACILITIES EVACUATION ISSUES	9
CULTURE DIVERSITY AS APPLIED TO FLS EDUCATORS	24
DISCOVERY & DOCUMENTATION FOR LAW SUITS	46
DRIVER/OPERATOR NFPA 1002: PUMPER APPARATUS	84
DRIVER/OPERATOR NFPA 1002: PUMPER APPARATUS FIELD DELIVERY	69
EMERGENCY MEDICAL CARE: NFPA 1001 BASED PROGRAM	35
EMERGENCY RESPONSE TO TERRORISM: BASIC CONCEPTS	29
EMS OPERATIONS	39
ENGINE COMPANY OPERATIONS - PART 2	39
EXCELLENT CUSTOMER SERVICE	49
FIRE & LIFE SAFETY EDUCATOR 1035-I	16
FIRE & LIFE SAFETY EDUCATOR 1035-II	19
FIRE & LIFE SAFETY PLANS REVIEW	13
FIRE ACADEMY FOR ELECTED/PUBLIC OFFICIALS	33
FIRE APPARATUS TESTING	11
FIRE ATTACK FOR THE MODERN ERA	666
FIRE FIGHTER ESSENTIAL SKILLS - I	58
FIRE FIGHTER ESSENTIAL SKILLS - II	42
FIRE FIGHTER ESSENTIAL SKILLS - III	70
FIRE FIGHTER SELF RESCUE	77
FIRE FIGHTER SURVIVAL & RESCUE	5
FIRE SERVICE INSTRUCTOR 1041-I	4
FIRE SERVICE RESCUE 101	54
FIREGROUND SUPPORT OPERATIONS	106



2016 PARTICIPATION REPORT BY TYPE OF PROGRAM

Extension Services Bureau (Cont.)

Course Name	Student Count
FORCIBLE ENTRY WORKSHOP	248
GETTING STARTED AS A NEW TRAINING OFFICER	23
GRAIN BIN EXTRICATION	37
GRAIN BIN EXTRICATION OPERATIONS	148
GRAIN BIN EXTRICATION OPERATIONS: EVERYONE LEAVES ALIVE	32
GRANTS ADMINISTRATION/MS OFFICE OF HOMELAND SECURITY	46
HALE PUMP	8
HAZARDOUS MATERIALS AWARENESS/OPERATIONS	52
HAZARDOUS MATERIALS AWARENESS/OPERATIONS-MODULE 1	50
HAZARDOUS MATERIALS AWARENESS/OPERATIONS-MODULE 1	69
HAZARDOUS MATERIALS AWARENESS/OPERATIONS-MODULE 2	29
HAZARDOUS MATERIALS: INITIAL RESPONSE	145
HOW EFFECTIVE IS YOUR TRAINING PROGRAM	54
HUMAN TRAFFICKING: THE FIRE SERVICE'S INVOLVEMENT AS RESPONDER	55
HUMAN TRAFFICKING: FIRE SERVICE INVOLVEMENT	633
I LOVE LIFE AND I LOVE TO LAUGH	46
IMPLEMENTING A WEB BASED FIRE SAFETY PROGRAM	25
INCIDENT SAFETY OFFICER	29
INTERIOR STRUCTURAL FIRE TACTICS	11
INTRO TO STRUCTURAL FIRE ATTACK & RESCUE FOR 911 PERSONNEL	19
LEADERSHIP I: STRATEGIES FOR COMPANY SUCCESS	31
LP-GAS TACTICS & LIVE FIRE DRILL	460
MANAGING THE RURAL EMERGENCY INCIDENT	32
MISSISSIPPI CERTIFIED VOLUNTEER FIRE FIGHTER [NFPA 1001-BASED]	22
MISSISSIPPI CERTIFIED VOLUNTEER FIRE FIGHTER [NFPA 1001-BASED]	2
MISSISSIPPI CERTIFIED VOLUNTEER FIRE FIGHTER [NFPA 1001-BASED]	1
MISSISSIPPI CERTIFIED VOLUNTEER FIRE FIGHTER I	287
MISSISSIPPI CERTIFIED VOLUNTEER FIRE FIGHTER I MODULE I CLASSROOM	487
MISSISSIPPI CERTIFIED VOLUNTEER FIRE FIGHTER II MODULE I	144
MISSISSIPPI CERTIFIED VOLUNTEER FIRE FIGHTER II MODULE 2	8
MISSISSIPPI CERTIFIED VOLUNTEER FIRE FIGHTER II MODULE 2	91
MISSISSIPPI FIRE PREVENTION AND PUBLIC FIRE SAFETY EDUCATION	26
MISSISSIPPI VOLUNTEER FIRE FIGHTER 1: UP-GRADE-MODULE 1	117
MISSISSIPPI VOLUNTEER FIRE FIGHTER 1: UP-GRADE-MODULE 2	109
NATIONAL TRAFFIC INCIDENT MANAGEMENT RESPONDER	55
NATIONAL TRAFFIC INCIDENT MANAGEMENT RESPONDER TRAINING PROGRAM	57
NATIONAL TRAFFIC INCIDENT MANAGEMENT: MODULE I	681
NATIONAL TRAFFIC INCIDENT MANAGEMENT: MODULE II	662
NATIONAL TRAFFIC INCIDENT MANAGEMENT: TRAIN-THE-TRAINER 6-HOUR	27
NATIONAL TRAFFIC INCIDENT MANAGEMENT: TRAIN-THE-TRAINER 12-HOUR	1
NEW FIRE CHIEF I	29
NEW FIRE CHIEF II: ADMINISTRATIVE ISSUES	29
NEW FIRE CHIEF III: CONTEMPORARY ISSUES	28



2016 PARTICIPATION REPORT BY TYPE OF PROGRAM

Extension Services Bureau (Cont.)

Course Name	Student Count
NFA COURSE: BEST PRACTICES IN COMMUNITY RISK REDUCTION	14
NFA: FIRE & LIFE SAFETY PLANS REVIEW	30
NFA: INCIDENT COMMAND FOR HIGHRISE OPERATIONS	25
NFA: INTRODUCTION TO UNIFIED COMMAND FOR ALL HAZARD INCIDENTS	10
NFA: LEADERSHIP I FOR FIRE & EMS: STRATEGIES FOR COMPANY SUCCESS	53
NFA: LEADERSHIP II FOR FIRE & EMS: STRATEGIES FOR PERSONAL SUCCESS	28
NFPA 2016 INVOLVEMENT FOR EDUCATING FLSE	23
NIMS ICS-300 (INTERMEDIATE ICS)	15
NIMS ICS 400 (ADVANCED ICS)	12
NO BUDGET, NO PROGRAM, NO WORRIES	24
NORTH MISSISSIPPI FIRE EXPO	137
OPERATING EMERGENCY VEHICLES-ANNUAL REFRESHER	12
OPERATING EMERGENCY VEHICLES-ANNUAL REFRESHER - EMR	65
OVERVIEW OF APPARATUS PUMP OPERATIONS	20
PASSENGER BUS RESCUE & INCIDENT MANAGEMENT	43
PERSONNEL ACCOUNTABILITY: TWO-IN/TWO-OUT RULE	19
POST AIRCRAFT ACCIDENT RESPONSE TRAINING	381
POST AIRCRAFT ACCIDENT RESPONSE TRAINING	56
PUBLIC INFORMATION OFFICER	12
RAPID INTERVENTION TEAMS	131
RESPONDING TO FIRE/RESCUE INCIDENTS: 911 PERSONNEL	13
RESPONSE TO NEW VEHICLE FIRES	33
ROADSIDE ROPE RESCUE AND RIGGING	9
SEARCH & RESCUE FOR DISASTER RESPONSES	362
SOCIAL MEDIA IN THE FIRE SERVICE	29
SOCIAL MEDIA POLICIES & PITFALLS	46
STRATEGIES FOR FIRE FIGHTER PERSONAL SUCCESS	169
TECHNOLOGY ON THE FRONT LINES	16
THE ART OF ILLUSION & MAGIC INVOLVING PUBLIC EDUCATORS	24
THE FIRE APPARATUS DRIVER	269
THE ROLE OF THE EMERGENCY SERVICE PROFESSIONAL IN NWS ALERTS	46
THERMAL IMAGING FOR STRUCTURAL FIRE FIGHTING	3
THEY'RE HERE: HUMAN TRAFFICKING AWARENESS	46
TRAINING TODAY'S FIRE FIGHTERS INVOLVING TODAY'S NATURAL GAS EMERGENCY	41
TRAINING, RESPONDING AND RETURNING HOME ALIVE	30
UNDERSTANDING THE ROLE OF THE INCIDENT SAFETY OFFICER	64
USING SOCIAL MEDIA FOR PUBLIC FLSE	25
VOLUNTEER FIRE FIGHTER - MODULE 1 - 2ND ATTEMPT	68
VOLUNTEER FIRE FIGHTER INSTRUCTOR ORIENTATION	33



2016 PARTICIPATION REPORT BY TYPE OF PROGRAM

Industrial Services Bureau

Course Name	Student Count
INDUSTRIAL EMERGENCY RESPONSE TRAINING (24-HOUR)	28
INDUSTRIAL EMERGENCY RESPONSE TRAINING (40-HOUR)	156
INDUSTRIAL EXTERIOR REFRESHER FIRE TRAINING	11
INDUSTRIAL INTERIOR/EXTERIOR REFRESHER FIRE FIGHTER TRAINING	62
INDUSTRIAL REFRESHER FIRE FIGHTER TRAINING (8-HOUR)	140
INDUSTRIAL REFRESHER FIRE FIGHTER TRAINING (24-HOUR)	47
INDUSTRIAL RESCUE REFRESHER (16-HOUR)	9
REFRESHER HAZ MAT TRAINING	11



2016 PARTICIPATION REPORT BY TYPE OF PROGRAM

Special Services Bureau

Course Name	Student Count
ADVANCED ROPE RESCUE CONCEPTS & RIGGING PHYSICS	16
CERTIFIED ADVANCED RESCUE TECHNICIAN	22
CHEMISTRY OF HAZARDOUS MATERIALS: FIRE CHEM I	16
CHLOREP TRAINING	167
CHLORINE/COMMUNICATIONS WITH THE MEDIA	37
CONFINED SPACE RESCUE	69
CONFINED SPACE RESCUE MODULE 1	42
CONFINED SPACE RESCUE MODULE 2	42
CONFINED SPACE RESCUE MODULE 3	42
CONFINED SPACE RESCUE MODULE 4	42
DECONTAMINATION/CHEMICAL PROTECTIVE CLOTHING	37
FIRE SERVICE MANAGEMENT 101	23
FIREFIGHTER INTERVENTION RESCUE SURVIVAL TECHNIQUES	71
FIREGROUND LEADERSHIP	59
HAZARDOUS MATERIALS FOR FIRST RESPONDERS	47
HAZARDOUS MATERIALS OPERATIONS WITH PPE & CONTROL	1
HAZARDOUS MATERIALS TECHNICIAN	37
HAZARDOUS MATERIALS TECHNICIAN - I	53
HAZARDOUS MATERIALS TECHNICIAN-II	36
INDUSTRIAL REFRESHER FIRE FIGHTER TRAINING (8-HOUR)	5
INDUSTRIAL REFRESHER FIRE FIGHTER TRAINING (24-HOUR)	15
INDUSTRIAL RESCUE REFRESHER	13
NON-BULK CONTAINERS/HIGHWAY CARRIERS/RAIL CARS	37
RESCUE REFRESHER	10
RESPONDING TO HAZARDOUS MATERIALS INCIDENTS	37
ROPE RESCUE I - MODULE 1	138
ROPE RESCUE I - MODULE 2	138
ROPE RESCUE I - MODULE 3	137
ROPE RESCUE I - MODULE 4	137
ROPE RESCUE II	59
ROPE RESCUE TECHNICIAN - I	82
SMOKE DIVER	44
SOURCES OF ASSISTANCE/HAZ MAT ICS/CHEM. TERMS & DEFINITIONS	37
TOXICOLOGY/MONITORING DEVICES/WEAPONS OF MASS DESTRUCTION	37
TRENCH RESCUE AND EMERGENCY SHORING TECHNICIAN	47
VEHICLE EXTRICATION & RESCUE : LEVELS I & II	47



2016 PARTICIPATION REPORT BY ORGANIZATION

Organization Name	Student Count
164 CES/CEF	9
AAA AMBULANCE SERVICE	1
ABEL'S STORE VOLUNTEER FIRE DEPARTMENT	3
ABERDEEN FIRE DEPARTMENT	9
ACKERMAN FIRE DEPARTMENT	7
ACONA VOLUNTEER FIRE DEPARTMENT	6
ADAMS COUNTY EMERGENCY MANAGEMENT	6
ADAMS COUNTY FIRE COORDINATOR	2
ADAMS COUNTY SHERIFF'S DEPARTMENT	1
ADATON/SELF CREEK FIRE DEPARTMENT	1
AIR PRODUCTS-ESCAMBIA PLANT	1
AKZO NOBEL	28
ALCORN COUNTY EMA	1
ALCORN COUNTY FIRE SERVICES	6
ALSORN COUNTY SHERIFF'S DEPARTMENT	2
ALSORN STATE UNIVERSITY	7
ALGOMA VOLUNTEER FIRE DEPARTMENT	3
ALPHABA/COCKRUM/INGRAMS FIRE DEPARTMENT	16
ALPINE VOLUNTEER FIRE DEPARTMENT	8
ALTITUDE VOLUNTEER FIRE DEPARTMENT	1
AMORY FIRE DEPARTMENT	176
AMORY POLICE DEPARTMENT	1
ANGUILLA VOLUNTEER FIRE DEPARTMENT	4
ARCOLA VOLUNTEER FIRE DEPARTMENT	22
ARKABUTLA VOLUNTEER FIRE DEPARTMENT	1
ARLINGTON VOLUNTEER FIRE DEPARTMENT/NESHOBA COUNTY	1
ASHLAND VOLUNTEER FIRE DEPARTMENT	8
ATTALA COUNTY CENTRAL FIRE DEPARTMENT	16
AUSTIN TEXAS FIRE DEPARTMENT	1
AXIALL CORPORATION	1
BAILEY VOLUNTEER FIRE DEPARTMENT	18
BALDWIN VOLUNTEER FIRE DEPARTMENT	3
BANNER VOLUNTEER FIRE DEPARTMENT/CALHOUN COUNTY	9
BARNES VOLUNTEER FIRE DEPARTMENT	1
BARTAHATCHIE VOLUNTEER FIRE DEPARTMENT	6
BARTON VOLUNTEER FIRE DEPARTMENT/GEORGE COUNTY	1
BARTON VOLUNTEER FIRE DEPARTMENT/MARSHALL COUNTY	22
BASIN VOLUNTEER FIRE DEPARTMENT	13
BASSFIELD VOLUNTEER FIRE DEPARTMENT	19
BATESVILLE FIRE DEPARTMENT	40
BAY SPRINGS VOLUNTEER FIRE DEPARTMENT	34
BAY ST. LOUIS FIRE DEPARTMENT	32
BAYSIDE PARK VOLUNTEER FIRE DEPARTMENT	1



2016 PARTICIPATION REPORT BY ORGANIZATION (Cont.)

Organization Name	Student Count
BEAUMONT VOLUNTEER FIRE DEPARTMENT	5
BEAVER LAKE VOLUNTEER FIRE DEPARTMENT	11
BEAVER MEADOWS VOLUNTEER FIRE DEPARTMENT	6
BEAVERDAM VOLUNTEER FIRE DEPARTMENT	3
BECKER-ATHENS VOLUNTEER FIRE DEPARTMENT	10
BECKHAM VOLUNTEER FIRE DEPARTMENT	1
BELDEN VOLUNTEER FIRE DEPARTMENT	11
BELMONT FIRE DEPARTMENT	12
BELZONI FIRE DEPARTMENT	34
BENTON COUNTY CIVIL DEFENSE/BOARD OF SUPERVISORS	1
BENTON COUNTY SHERIFF'S DEPARTMENT	1
BENTON FIRE DEPARTMENT	2
BENTON VOLUNTEER FIRE DEPARTMENT	21
BENTONIA VOLUNTEER FIRE DEPARTMENT	9
BETHEDEN VOLUNTEER FIRE DEPARTMENT	4
BETHEL VOLUNTEER FIRE DEPARTMENT	11
BEULAH HUBBARD VOLUNTEER FIRE DEPARTMENT/NEWTON COUNTY	9
BEULAH VOLUNTEER FIRE DEPARTMENT/BOLIVAR COUNTY	2
BEXLEY VOLUNTEER FIRE DEPARTMENT	2
BIG CREEK VOLUNTEER FIRE DEPARTMENT	6
BIG LEVEL VOLUNTEER FIRE DEPARTMENT	4
BIGGERSVILLE VOLUNTEER FIRE DEPARTMENT	3
BILOXI FIRE DEPARTMENT	176
BILOXI FIRE DEPARTMENT STATION #4	4
BIRMINGHAM RIDGE FIRE PROTECTION DISTRICT	2
BLACKLAND VOLUNTEER FIRE DEPARTMENT	2
BLUE MOUNTAIN VOLUNTEER FIRE DEPARTMENT	3
BLYTHEVILLE FIRE DEPARTMENT	15
BOBO VOLUNTEER FIRE DEPARTMENT	5
BOGGY VOLUNTEER FIRE DEPARTMENT	9
BOLIVAR COUNTY FIRE DEPARTMENT	48
BOLTON VOLUNTEER FIRE DEPARTMENT	6
BOONEVILLE FIRE DEPARTMENT	8
BOVINA VOLUNTEER FIRE DEPARTMENT	11
BRANDON FIRE DEPARTMENT	137
BRAXTON VOLUNTEER FIRE DEPARTMENT	13
BRIDGETOWN VOLUNTEER FIRE DEPARTMENT	30
BROOKHAVEN FIRE DEPARTMENT	29
BROOKLYN VOLUNTEER FIRE DEPARTMENT	4
BROOKSVILLE VOLUNTEER FIRE DEPARTMENT	2
BROWNSVILLE VOLUNTEER FIRE DEPARTMENT	3
BRUCE VOLUNTEER FIRE DEPARTMENT	27
BUDE VOLUNTEER FIRE DEPARTMENT	16



2016 PARTICIPATION REPORT BY ORGANIZATION (Cont.)

Organization Name	Student Count
BUFFALO VOLUNTEER FIRE DEPARTMENT	10
BURNSVILLE VOLUNTEER FIRE DEPARTMENT	3
BURTON VOLUNTEER FIRE DEPARTMENT	8
BYHALIA VOLUNTEER FIRE DEPARTMENT	140
BYNUM VOLUNTEER FIRE DEPARTMENT	3
BYRAM FIRE DEPARTMENT	122
BYRAM PUBLIC WORKS DEPARTMENT	7
BYRAM VOLUNTEER FIRE DEPARTMENT	5
BYWY VOLUNTEER FIRE DEPARTMENT/CHOCTAW COUNTY	14
CALHOUN CITY VOLUNTEER FIRE DEPARTMENT	15
CALHOUN COUNTY FIRE COORDINATOR	14
CALHOUN VOLUNTEER FIRE DEPARTMENT	10
CAMDEN FIRE & RESCUE	3
CANNONSBURG/CHURCH HILL VOLUNTEER FIRE DEPARTMENT	3
CANTON FIRE DEPARTMENT	38
CARMICHAEL VOLUNTEER FIRE DEPARTMENT	4
CARNES VOLUNTEER FIRE DEPARTMENT	50
CARRIERE VOLUNTEER FIRE DEPARTMENT	2
CARTHAGE FIRE DEPARTMENT	20
CASCILLA VOLUNTEER FIRE DEPARTMENT	8
CASON VOLUNTEER FIRE DEPARTMENT	13
CATO VOLUNTEER FIRE DEPARTMENT	4
CAYCE VOLUNTEER FIRE DEPARTMENT	91
CEDAR CREEK VOLUNTEER FIRE DEPARTMENT	1
CEDAR HILL FIRE DEPARTMENT	1
CENTER RIDGE VOLUNTEER FIRE DEPARTMENT	1
CENTER VOLUNTEER FIRE DEPARTMENT/UNION COUNTY	2
CENTRAL JASPER COUNTY VOLUNTEER FIRE DEPARTMENT	18
CENTRAL MS CORRECTIONAL FACILITY	13
CENTRAL OKTIBBEHA /LONGVIEW FIRE DEPARTMENT	30
CENTREVILLE VOLUNTEER FIRE DEPARTMENT	13
CHARLESTON VOLUNTEER FIRE DEPARTMENT	7
CHATTANOOGA FIRE DEPARTMENT	1
CHICKASAW COUNTY SHERIFF'S DEPARTMENT	1
CHICKEN BONE FIRE DEPARTMENT	6
CHLORINE INSTITUTE	167
CHOCTAW COUNTY SHERIFF'S DEPARTMENT	2
CHOCTAW FIRE DEPARTMENT	23
CHUNKY VOLUNTEER FIRE DEPARTMENT	7
CLAIBORNE COUNTY FIRE DEPARTMENT	1
CLARKDALE VOLUNTEER FIRE DEPARTMENT	5
CLARKE COUNTY EMA	2
CLARKE COUNTY FIRE COORDINATOR	1



2016 PARTICIPATION REPORT BY ORGANIZATION (Cont.)

Organization Name	Student Count
CLARKE COUNTY SHERIFF'S DEPARTMENT	1
CLARKSDALE FIRE DEPARTMENT	99
CLAY COUNTY SHERIFF'S DEPARTMENT	2
CLEARY VOLUNTEER FIRE DEPARTMENT	2
CLEM VOLUNTEER FIRE DEPARTMENT	3
CLEVELAND FIRE DEPARTMENT	106
CLEVELAND UNIT FIRE DEPARTMENT/BOLIVAR COUNTY DISTRICT 1	1
CLINTON FIRE DEPARTMENT	138
COAHOMA COUNTY FIRE DEPARTMENT	32
COLDWATER VOLUNTEER FIRE DEPARTMENT	16
COLES POINT VOLUNTEER FIRE DEPARTMENT	15
COLLINS FIRE DEPARTMENT	27
COLLINSVILLE VOLUNTEER FIRE DEPARTMENT	5
COLUMBIA FIRE DEPARTMENT	25
COLUMBUS FIRE DEPARTMENT	55
COMBAT READINESS TRAINING CENTER FIRE DEPARTMENT	30
COMO VOLUNTEER FIRE DEPARTMENT	1
CONEHATTA VOLUNTEER FIRE DEPARTMENT	11
COPIAH COUNTY EMERGENCY MANAGEMENT	2
COPIAH COUNTY SHERIFF'S DEPARTMENT	1
CORINTH FIRE DEPARTMENT	265
COUNTY LINE VOLUNTEER FIRE DEPARTMENT	8
COURTLAND VOLUNTEER FIRE DEPARTMENT	12
COVINGTON COUNTY SHERIFF'S DEPARTMENT	1
CRENSHAW VOLUNTEER FIRE DEPARTMENT	2
CROSSROADS VOLUNTEER FIRE DEPARTMENT/HINDS COUNTY	5
CROWDER VOLUNTEER FIRE DEPARTMENT	5
CRYSTAL SPRINGS FIRE DEPARTMENT	12
CRYSTAL SPRINGS VOLUNTEER FIRE DEPARTMENT	15
CULKIN VOLUNTEER FIRE DEPARTMENT	72
CURTIS-LOCKE VOLUNTEER FIRE DEPARTMENT	10
DAMASCUS FIRE DEPARTMENT	9
DECATUR FIRE & RESCUE	1
DECATUR VOLUNTEER FIRE DEPARTMENT	8
DEKALB VOLUNTEER FIRE DEPARTMENT	7
DELTA STATE UNIVERSITY: FACILITIES MANAGEMENT	2
DENNIS VOLUNTEER FIRE DEPARTMENT	10
DERMA VOLUNTEER FIRE DEPARTMENT	12
DESOTO COUNTY EMERGENCY SERVICES	10
DESOTO COUNTY SHERIFF'S DEPARTMENT	7
DESOTO VOLUNTEER FIRE DEPARTMENT/CLARKE COUNTY	4
DIAMONDHEAD FIRE DEPARTMENT	15
D'IBERVILLE FIRE DEPARTMENT	17



2016 PARTICIPATION REPORT BY ORGANIZATION (Cont.)

Organization Name	Student Count
DIXIE VOLUNTEER FIRE DEPARTMENT	26
DIXON VOLUNTEER FIRE DEPARTMENT	6
DODGE CITY KANSAS FIRE DEPARTMENT	2
DORSEY/FRIENDSHIP FIRE DEPARTMENT	7
DOTHAN REGIONAL AIRPORT FIRE DEPARTMENT	8
DREW VOLUNTEER FIRE DEPARTMENT	18
DRY CREEK VOLUNTEER FIRE DEPARTMENT	18
DUBLIN VOLUNTEER FIRE DEPARTMENT	1
DUCK HILL VOLUNTEER FIRE DEPARTMENT	3
DUFFEE VOLUNTEER FIRE DEPARTMENT	1
DUMAS VOLUNTEER FIRE DEPARTMENT	15
DUNCAN FIRE DEPARTMENT/BOLIVAR COUNTY DISTRICT 2	2
E. FRANKLIN RURAL FIRE DEPARTMENT	1
E. LINCOLN VOLUNTEER FIRE DEPARTMENT	1
E. NESHOPA VOLUNTEER FIRE DEPARTMENT	19
E. OKTIBBEHA COUNTY FIRE DEPARTMENT	40
E. UNION VOLUNTEER FIRE DEPARTMENT	7
E. WINSTON COUNTY VOLUNTEER FIRE DEPARTMENT	3
EAGLE LAKE VOLUNTEER FIRE DEPARTMENT	10
EASTPORT/MILL CREEK FIRE DEPARTMENT	2
ECRU VOLUNTEER FIRE DEPARTMENT	8
EDEN VOLUNTEER FIRE DEPARTMENT	10
EDINBURG VOLUNTEER FIRE DEPARTMENT	2
ELLISVILLE FIRE DEPARTMENT	5
EMERGENCY EQUIPMENT PROFESSIONALS	2
ENID VOLUNTEER FIRE DEPARTMENT	1
ENON VOLUNTEER FIRE DEPARTMENT	33
ENTERPRISE VOLUNTEER FIRE DEPARTMENT	2
ERGON REFINING, INC.	92
ESCATAWPA VOLUNTEER FIRE DEPARTMENT	8
EUDORA VOLUNTEER FIRE DEPARTMENT	31
EUPORA VOLUNTEER FIRE DEPARTMENT	13
EVERGREEN-CAROLINA VOLUNTEER FIRE DEPARTMENT	26
EXXON-BATON ROUGE REFINERY	32
EXXON-BAYTOWN, TX REFINERY/CHEMICAL PLANT	22
FAIRHAVEN VOLUNTEER FIRE DEPARTMENT	20
FALKNER VOLUNTEER FIRE DEPARTMENT	4
FARMHAVEN VOLUNTEER FIRE DEPARTMENT	3
FARMINGTON VOLUNTEER FIRE DEPARTMENT	9
FAYETTE VOLUNTEER FIRE DEPARTMENT	5
FELLOWSHIP VOLUNTEER FIRE DEPARTMENT	8
FENTON VOLUNTEER FIRE DEPARTMENT	2
FERNWOOD VOLUNTEER FIRE DEPARTMENT	12



2016 PARTICIPATION REPORT BY ORGANIZATION (Cont.)

Organization Name	Student Count
FIRST CHEMICAL CORPORATION	24
FISHER FERRY VOLUNTEER FIRE DEPARTMENT	39
FLORENCE - CITY OF	7
FLORENCE VOLUNTEER FIRE DEPARTMENT	6
FLOWOOD FIRE DEPARTMENT	103
FONTAINEBLEAU VOLUNTEER FIRE DEPARTMENT	1
FOREST FIRE DEPARTMENT	13
FORREST COUNTY EMERGENCY MANAGEMENT	5
FORREST GENERAL HOSPITAL	1
FORT BAYOU VOLUNTEER FIRE DEPARTMENT	1
FORTS LAKE/FRANKLIN CREEK VOLUNTEER FIRE DEPARTMENT	30
FOSTER MOUND VOLUNTEER FIRE DEPARTMENT	30
FOXWORTH VOLUNTEER FIRE DEPARTMENT	6
FRANKLIN COUNTY DISTRICT 5 VOLUNTEER FIRE DEPARTMENT	23
FRANKLIN COUNTY SHERIFF'S DEPARTMENT	1
FRENCH CAMP VOLUNTEER FIRE DEPARTMENT	1
FRIENDSHIP VOLUNTEER FIRE DEPARTMENT	3
FULTON FIRE DEPARTMENT	47
FURRS VOLUNTEER FIRE DEPARTMENT	3
GAUTIER FIRE DEPARTMENT	68
GEESLIN CORNER VOLUNTEER FIRE DEPARTMENT	4
GEORGE COUNTY CORRECTIONAL FACILITY	6
GEORGETOWN VOLUNTEER FIRE DEPARTMENT	5
GIBBSTOWN/LAWRENCE VOLUNTEER FIRE DEPARTMENT	2
GILLSBURG VOLUNTEER FIRE DEPARTMENT	1
GLADE VOLUNTEER FIRE DEPARTMENT	9
GLEN VOLUNTEER FIRE DEPARTMENT	20
GLOSTER FIRE DEPARTMENT/AMITE COUNTY	2
GLOSTER VOLUNTEER FIRE DEPARTMENT/AMITE COUNTY	3
GLUCKSTADT FIRE PROTECTION DISTRICT	9
GOLDEN VOLUNTEER FIRE DEPARTMENT	9
GOODMAN VOLUNTEER FIRE DEPARTMENT	4
GORE SPRINGS VOLUNTEER FIRE DEPARTMENT	5
GRANBY VOLUNTEER FIRE DEPARTMENT	16
GRAND GULF NUCLEAR STATION	9
GREENFIELD VOLUNTEER FIRE DEPARTMENT	6
GREENLEAF VOLUNTEER FIRE DEPARTMENT	7
GREENVILLE FIRE DEPARTMENT	134
GREENVILLE MID-DELTA AIRPORT	3
GREENWOOD FIRE DEPARTMENT	247
GRENADA FIRE DEPARTMENT	63
GULF PARK ESTATES/ST. ANDREWS FIRE DISTRICT	24
GULFPORT FIRE DEPARTMENT	171



2016 PARTICIPATION REPORT BY ORGANIZATION (Cont.)

Organization Name	Student Count
GULFPORT POLICE DEPARTMENT	3
GUNNISON FIRE DEPARTMENT/BOLIVAR COUNTY DISTRICT 4	2
GUNTOWN VOLUNTEER FIRE DEPARTMENT	4
H.A.L. VOLUNTEER FIRE DEPARTMENT	1
HANCOCK COUNTY EMERGENCY MANAGEMENT	1
HARMONY VOLUNTEER FIRE DEPARTMENT	7
HARRISON COUNTY FIRE SERVICE	87
HARRISON COUNTY SHERIFF'S DEPARTMENT	1
HARRISVILLE VOLUNTEER FIRE DEPARTMENT	1
HATLEY VOLUNTEER FIRE DEPARTMENT	10
HATTIESBURG FIRE DEPARTMENT	332
HATTIESBURG/LAUREL REGIONAL AIRPORT AUTHORITY	7
HAZLEHURST FIRE DEPARTMENT	3
HAZLEHURST VOLUNTEER FIRE DEPARTMENT	5
HEIDELBERG VOLUNTEER FIRE DEPARTMENT	5
HERNANDO FIRE DEPARTMENT	29
HEUCKS RETREAT VOLUNTEER FIRE DEPARTMENT	17
HEUCKS RETREAT VOLUNTEER FIRE DEPARTMENT SECRETARY	4
HICKORY FLAT VOLUNTEER FIRE DEPARTMENT	1
HICKORY GROVE VOLUNTEER FIRE DEPARTMENT/LAMAR COUNTY	6
HICKORY VOLUNTEER FIRE DEPARTMENT/NEWTON COUNTY	6
HIGH POINT VOLUNTEER FIRE DEPARTMENT	3
HINDS COUNTY EMERGENCY MANAGEMENT	18
HOG CHAIN VOLUNTEER FIRE DEPARTMENT	1
HOLLY SPRINGS FIRE DEPARTMENT	47
HOLTSPUR VOLUNTEER FIRE DEPARTMENT	2
HOMWOOD VOLUNTEER FIRE DEPARTMENT	3
HOPE VOLUNTEER FIRE DEPARTMENT	6
HOPEWELL VOLUNTEER FIRE DEPARTMENT/COPIAH COUNTY	11
HOPEWELL/CLARKE COUNTY VOLUNTEER FIRE DEPARTMENT	2
HORN LAKE FIRE DEPARTMENT	38
HOT COFFEE VOLUNTEER FIRE DEPARTMENT	8
HOULKA VOLUNTEER FIRE DEPARTMENT	14
HOUSE VOLUNTEER FIRE DEPARTMENT	10
HOUSTON FIRE DEPARTMENT	8
HOUSTON COMM/DISTRICT 2 FIRE DEPARTMENT	10
HUNTINGTON INGALLS INC	10
HURRICANE VOLUNTEER FIRE DEPARTMENT	4
HWY 84 WEST VOLUNTEER FIRE DEPARTMENT	2
INDEPENDENCE VOLUNTEER FIRE DEPARTMENT	16
INDIANOLA FIRE DEPARTMENT	103
INDIANOLA VOLUNTEER FIRE DEPARTMENT	1
INGOMAR VOLUNTEER FIRE DEPARTMENT	36



2016 PARTICIPATION REPORT BY ORGANIZATION (Cont.)

Organization Name	Student Count
INTERNATIONAL PAPER COMPANY-VICKSBURG MILL	29
INVERNESS VOLUNTEER FIRE DEPARTMENT	6
ISOLA VOLUNTEER FIRE DEPARTMENT	2
ISSAQUENA COUNTY SHERIFF'S DEPARTMENT	1
ISSAQUENA COUNTY VOLUNTEER FIRE DEPARTMENT	3
IUKA FIRE DEPARTMENT	6
JACINTO VOLUNTEER FIRE DEPARTMENT	2
JACKSON COUNTY FIRE COORDINATOR	12
JACKSON COUNTY FIRE DISTRICT	76
JACKSON COUNTY SHERIFF'S DEPARTMENT	3
JACKSON FIRE DEPARTMENT	1412
JACKSON STATE UNIVERSITY	4
JANICE VOLUNTEER FIRE DEPARTMENT	9
JASPER COUNTY SHERIFF'S DEPARTMENT	1
JEFF DAVIS COUNTY SHERIFF'S DEPARTMENT	1
JEFFERSON COUNTY FIRE COORDINATOR	10
JEFFERSON COUNTY SHERIFF'S DEPARTMENT	1
JONESTOWN VOLUNTEER FIRE DEPARTMENT	1
KENOSHA FIRE DEPARTMENT	1
KILMICHAEL VOLUNTEER FIRE DEPARTMENT	1
KILN VOLUNTEER FIRE DEPARTMENT	6
KINGSTON VOLUNTEER FIRE DEPARTMENT	4
KOSCIUSKO FIRE DEPARTMENT	10
KOSSUTH VOLUNTEER FIRE DEPARTMENT	26
LAFAYETTE COUNTY FIRE DEPARTMENT	86
LAFAYETTE COUNTY FIRE TRAINING OFFICER	1
LAFAYETTE COUNTY SHERIFF'S DEPARTMENT	1
LAKE EDDINS VOLUNTEER FIRE DEPARTMENT	15
LAKE HARBOR VOLUNTEER FIRE DEPARTMENT	42
LAKE MONTROSE VOLUNTEER FIRE DEPARTMENT	15
LAKE VOLUNTEER FIRE DEPARTMENT/SCOTT COUNTY	12
LAMAR COUNTY EMA	2
LAMAR COUNTY FIRE COORDINATOR	1
LAMAR COUNTY FIRE SERVICES	55
LAMAR COUNTY SHERIFF'S DEPARTMENT	1
LAMBERT VOLUNTEER FIRE DEPARTMENT	2
LANGFORD VOLUNTEER FIRE DEPARTMENT	47
LAUDERDALE COUNTY EMERGENCY MANAGEMENT	1
LAUDERDALE COUNTY FIRE SERVICES	29
LAUDERDALE VOLUNTEER FIRE DEPARTMENT	12
LAUREL FIRE DEPARTMENT	25
LAWRENCE COUNTY FIRE SERVICES	20
LEAKE COUNTY EMA	8



2016 PARTICIPATION REPORT BY ORGANIZATION (Cont.)

Organization Name	Student Count
LEAKE COUNTY FIRE COORDINATOR	2
LEARNED VOLUNTEER FIRE DEPARTMENT	2
LEE COUNTY FIRE COORDINATOR	1
LEE COUNTY SHERIFF'S DEPARTMENT	1
LEESBURG VOLUNTEER FIRE DEPARTMENT	22
LEFLORE COUNTY SHERIFF'S DEPARTMENT	1
LELAND FIRE DEPARTMENT	2
LETOURNEAU COMMUNITY FIRE DEPARTMENT	7
LEWISBURG VOLUNTEER FIRE DEPARTMENT	19
LEXIE VOLUNTEER FIRE DEPARTMENT	5
LEXITON VOLUNTEER FIRE DEPARTMENT	6
LIBERTY ROAD VOLUNTEER FIRE DEPARTMENT/ADAMS COUNTY	12
LIBERTY VOLUNTEER FIRE DEPARTMENT/AMITE COUNTY	11
LINWOOD VOLUNTEER FIRE DEPARTMENT	3
LIZANA VOLUNTEER FIRE DEPARTMENT	4
LONE STAR VOLUNTEER FIRE DEPARTMENT	2
LONG BEACH FIRE DEPARTMENT	30
LONG CREEK VOLUNTEER FIRE DEPARTMENT	6
LONGINO CENTRAL VOLUNTEER FIRE DEPARTMENT	10
LONGTOWN VOLUNTEER FIRE DEPARTMENT	14
LONGVIEW VOLUNTEER FIRE DEPARTMENT	9
LOOP, LLC	21
LOOXAHOMA VOLUNTEER FIRE DEPARTMENT	5
LORMAN VOLUNTEER FIRE DEPARTMENT	13
LOST GAP VOLUNTEER FIRE DEPARTMENT	2
LOUIN VOLUNTEER FIRE DEPARTMENT	16
LOUISVILLE FIRE DEPARTMENT	74
LOVE VOLUNTEER FIRE DEPARTMENT	32
LOWNDES COUNTY E-911	2
LOWNDES COUNTY SHERIFF'S DEPARTMENT	1
LOYD STAR VOLUNTEER FIRE DEPARTMENT	1
LSR VOLUNTEER FIRE DEPARTMENT/SUNFLOWER COUNTY	10
LUCEDALE FIRE DEPARTMENT	2
LUDLOW VOLUNTEER FIRE DEPARTMENT	12
LULA VOLUNTEER FIRE DEPARTMENT	1
LUMBERTON VOLUNTEER FIRE DEPARTMENT	7
LYON VOLUNTEER FIRE DEPARTMENT	6
MABEN VOLUNTEER FIRE DEPARTMENT	14
MACEDONIA VOLUNTEER FIRE DEPARTMENT	16
MACON VOLUNTEER FIRE DEPARTMENT	9
MADDEN VOLUNTEER FIRE DEPARTMENT	3
MADISON COUNTY EMA	7
MADISON COUNTY SHERIFF'S DEPARTMENT	1



2016 PARTICIPATION REPORT BY ORGANIZATION (Cont.)

Organization Name	Student Count
MADISON FIRE DEPARTMENT	99
MADISON POLICE DEPARTMENT	25
MAGEE FIRE DEPARTMENT	20
MAGNOLIA VOLUNTEER FIRE DEPARTMENT/PIKE COUNTY	9
MAGNOLIA VOLUNTEER FIRE DEPARTMENT/STONE COUNTY	6
MANTACHIE FIRE DEPARTMENT	24
MARION VOLUNTEER FIRE & RESCUE	9
MARKS VOLUNTEER FIRE DEPARTMENT	5
MARRERO HARVEY VOLUNTEER FIRE CO #1	1
MARS HILL VOLUNTEER FIRE DEPARTMENT/AMITE COUNTY	5
MARSHALL COUNTY FIRE COORDINATOR	11
MARSHALL COUNTY SHERIFF'S DEPARTMENT	1
MARTIN VOLUNTEER FIRE DEPARTMENT	5
MARYDELL/BARNES VOLUNTEER FIRE DEPARTMENT	4
MATHISTON VOLUNTEER FIRE DEPARTMENT	5
MCCOMB FIRE DEPARTMENT	74
MCLAURIN VOLUNTEER FIRE DEPARTMENT	7
MEADVILLE VOLUNTEER FIRE DEPARTMENT	10
MEEHAN VOLUNTEER FIRE DEPARTMENT	10
MEMPHIS, TN FIRE DEPARTMENT	74
MENDENHALL VOLUNTEER FIRE DEPARTMENT	20
MERIDIAN FIRE DEPARTMENT	384
MIDWAY VOLUNTEER FIRE DEPARTMENT/TISHOMINGO COUNTY DISTRICT 3	1
MIZE VOLUNTEER FIRE DEPARTMENT	3
MOBILE FIRE & RESCUE DEPARTMENT	42
MOBILE FIRE DEPARTMENT	14
MONROE COUNTY EMERGENCY MANAGEMENT	4
MONROE FIRE DEPARTMENT	16
MONTEREY VOLUNTEER FIRE DEPARTMENT	17
MONTGOMERY COUNTY EMERGENCY MANAGEMENT AGENCY	1
MONTGOMERY COUNTY SHERIFF'S DEPARTMENT	1
MONTICELLO FIRE DEPARTMENT	10
MONTROSE VOLUNTEER FIRE DEPARTMENT	5
MOOREVILLE EGGVILLE VOLUNTEER FIRE DEPARTMENT	38
MOOREVILLE VOLUNTEER FIRE DEPARTMENT	30
MOORHEAD VOLUNTEER FIRE DEPARTMENT	3
MORTON VOLUNTEER FIRE DEPARTMENT	5
MOSELLE VOLUNTEER FIRE DEPARTMENT	3
MOSS POINT FIRE DEPARTMENT	38
MOSSVILLE VOLUNTEER FIRE DEPARTMENT	10
MOUND BAYOU VOLUNTEER FIRE DEPARTMENT	12
MOUNT OLIVE VOLUNTEER FIRE DEPARTMENT	4
MS AIR GUARD/MERIDIAN/186th REFUELING GROUP	45



2016 PARTICIPATION REPORT BY ORGANIZATION (Cont.)

Organization Name	Student Count
MS ANG/AIRPORT FIRE DEPARTMENT 172ND CES	11
MS DEPARTMENT OF EDUCATION	3
MS DEPARTMENT OF ENVIRONMENTAL QUALITY	16
MS DEPARTMENT OF HEALTH	3
MS FORESTRY COMMISSION-GRANADA COUNTY	2
MS GULF COAST COMMUNITY COLLEGE-GAUTIER	5
MS HIGHWAY PATROL - UNION COUNTY	2
MS STATE CAPITOL POLICE DEPARTMENT	1
MS STATE HELATH DEPARTMENT - LICENSURE & CERT	1
MS STATE PENITENTIARY/PARCHMAN FIRE DEPARTMENT	6
MS STATE UNIVERSITY	6
MT. NEBO FIRE DEPARTMENT/KEMPER COUNTY DISTRICT 5	3
MT. OLIVET VOLUNTEER FIRE DEPARTMENT	20
MT. SALEM VOLUNTEER FIRE DEPARTMENT	5
MURPHREESBORO VOLUNTEER FIRE DEPARTMENT	5
MYRICK & MILL CREEK FIRE DEPARTMENT	4
MYRTLE VOLUNTEER FIRE DEPARTMENT	6
N. CENTRAL SCOTT COUNTY/MIDWAY VOLUNTEER FIRE DEPARTMENT	7
N. BENTON COUNTY VOLUNTEER FIRE DEPARTMENT	7
N. CENTRAL AMITE COUNTY VOLUNTEER FIRE DEPARTMENT	2
N. E. CALHOUN VOLUNTEER FIRE DEPARTMENT	5
N. E. JASPER VOLUNTEER FIRE DEPARTMENT	2
N. E. LAMAR VOLUNTEER FIRE DEPARTMENT	9
N. E. UNION FIRE DEPARTMENT	25
N. E. WARREN COUNTY VOLUNTEER FIRE DEPARTMENT	22
N. FORREST COUNTY VOLUNTEER FIRE DEPARTMENT	44
N. W. COVINGTON VOLUNTEER FIRE DEPARTMENT	11
N. W. STONE COUNTY VOLUNTEER FIRE DEPARTMENT	1
NATCHEZ FIRE DEPARTMENT	30
NATCHEZ-ADAMS COUNTY AIRPORT	3
NESBIT VOLUNTEER FIRE DEPARTMENT	13
NESHOBA COUNTY EMA	2
NETTLETON VOLUNTEER FIRE DEPARTMENT	13
NEW ALBANY FIRE DEPARTMENT	230
NEW AUGUSTA VOLUNTEER FIRE DEPARTMENT	8
NEW HEBRON VOLUNTEER FIRE/RESCUE	6
NEW HOPE VOLUNTEER FIRE DEPARTMENT/KEMPER COUNTY	5
NEW SITE VOLUNTEER FIRE DEPARTMENT/LINCOLN COUNTY	11
NEW SITE VOLUNTEER FIRE DEPARTMENT/PRENTISS COUNTY	2
NEWTON COUNTY FIRE SERVICES	5
NEWTON FIRE DEPARTMENT	19
NON-FLOOD PROTECTION ASSET MANAGEMENT AUTHORITY	6
NORTH BEND VOLUNTEER FIRE DEPARTMENT	11



2016 PARTICIPATION REPORT BY ORGANIZATION (Cont.)

Organization Name	Student Count
NORTH HAVEN VOLUNTEER FIRE DEPARTMENT	7
NORTH OKALOOSA FIRE DISTRICT	22
NORTH TUNICA COUNTY FIRE PROTECTION DISTRICT	1
NORTHEAST FIRE DEPARTMENT JACKSON COUNTY	27
NORTHWEST JACKSON COUNTY VOLUNTEER FIRE DEPARTMENT	1
OAK BOWERY VOLUNTEER FIRE DEPARTMENT	4
OAK GROVE VOLUNTEER FIRE DEPARTMENT/WALTHALL COUNTY	7
OAK GROVE/BEAT 4 LAMAR COUNTY FIRE DEPARTMENT	15
OAKVALE VOLUNTEER FIRE DEPARTMENT	1
OCEAN SPRINGS FIRE DEPARTMENT	43
OFAHOMA VOLUNTEER FIRE DEPARTMENT	3
OKOLONA FIRE DEPARTMENT	29
OKTIBBEHA COUNTY DISTRICT 5 FIRE DEPARTMENT	33
OKTIBBEHA COUNTY EMERGENCY MANAGEMENT	2
OKTIBBEHA COUNTY FIRE COORDINATOR	2
OLIVE BRANCH FIRE DEPARTMENT	201
OLIVE BRANCH POLICE DEPARTMENT	7
OLOH VOLUNTEER FIRE DEPARTMENT	4
O'NEIL VOLUNTEER FIRE DEPARTMENT	6
OXFORD FIRE DEPARTMENT	125
PACHUTA VOLUNTEER FIRE DEPARTMENT	17
PADEN VOLUNTEER FIRE DEPARTMENT	11
PADUCAH WELLS VOLUNTEER FIRE DEPARTMENT	2
PALMETTO VOLUNTEER FIRE DEPARTMENT	3
PASCAGOULA FIRE DEPARTMENT	22
PASS CHRISTIAN FIRE DEPARTMENT	49
PAULDING VOLUNTEER FIRE DEPARTMENT	15
PAYNES VOLUNTEER FIRE DEPARTMENT	12
PEARL FIRE DEPARTMENT	76
PEARL RIVER COUNTY SHERIFF'S DEPARTMENT	1
PELAHATCHIE VOLUNTEER FIRE DEPARTMENT	25
PERRY COUNTY SHERIFF'S DEPARTMENT	1
PETAL FIRE DEPARTMENT	161
PETAL POLICE DEPARTMENT	1
PHILADELPHIA FIRE DEPARTMENT	34
PHILIPP VOLUNTEER FIRE DEPARTMENT	2
PICAYUNE FIRE DEPARTMENT	33
PINE BURR VOLUNTEER FIRE DEPARTMENT	16
PINE GROVE VOLUNTEER FIRE DEPARTMENT	2
PINE RIDGE VOLUNTEER FIRE DEPARTMENT	8
PINE VALLEY VOLUNTEER FIRE DEPARTMENT	3
PINEDALE VOLUNTEER FIRE DEPARTMENT	2
PINEVILLE VOLUNTEER FIRE DEPARTMENT	4



2016 PARTICIPATION REPORT BY ORGANIZATION (Cont.)

Organization Name	Student Count
PINOLA VOLUNTEER FIRE DEPARTMENT	2
PISGAH COMMUNITY FIRE DEPARTMENT	6
PITTSBORO VOLUNTEER FIRE DEPARTMENT	7
PLANTERSVILLE VOLUNTEER FIRE DEPARTMENT	15
POAGVILLE VOLUNTEER FIRE DEPARTMENT	7
POCAHONTAS VOLUNTEER FIRE DEPARTMENT	20
POLKVILLE VOLUNTEER FIRE DEPARTMENT	10
PONTOTOC FIRE DEPARTMENT	11
POPE VOLUNTEER FIRE DEPARTMENT	12
POPLARVILLE FIRE DEPARTMENT	1
PORTERVILLE VOLUNTEER FIRE DEPARTMENT	7
POTTS CAMP VOLUNTEER FIRE DEPARTMENT	33
POWERS VOLUNTEER FIRE DEPARTMENT	3
PRAIRIE POINT FIRE DEPARTMENT/NOXUBEE COUNTY DIST 1	3
PRAIRIE VOLUNTEER FIRE DEPARTMENT	6
PRENTISS COUNTY FIRE COORDINATOR	1
PRENTISS COUNTY SHERIFF'S DEPARTMENT	1
PRENTISS VOLUNTEER FIRE DEPARTMENT	1
PRESTON FIRE DEPARTMENT/KEMPER COUNTY DISTRICT 4	1
PROGRESS VOLUNTEER FIRE DEPARTMENT/PIKE COUNTY	16
PRO-TECH FIRE SERVICES LTD	10
PUCKETT VOLUNTEER FIRE DEPARTMENT	9
PURVIS VOLUNTEER FIRE DEPARTMENT	7
QUITMAN COUNTY SHERIFF'S DEPARTMENT	1
QUITMAN VOLUNTEER FIRE DEPARTMENT	10
RALEIGH VOLUNTEER FIRE DEPARTMENT	8
RAMSEY SPRINGS VOLUNTEER FIRE DEPARTMENT	2
RANDOLPH VOLUNTEER FIRE DEPARTMENT	1
RANKIN COUNTY EOC	13
RANKIN COUNTY SHERIFF'S DEPARTMENT	3
RAPIDES PARISH FIRE DISTRICT 2	2
RAWLS SPRINGS VOLUNTEER FIRE DEPARTMENT	2
RAYMOND VOLUNTEER FIRE DEPARTMENT	10
RED BANKS FIRE DEPARTMENT	41
RED HILL VOLUNTEER FIRE DEPARTMENT	16
REDLICK VOLUNTEER FIRE DEPARTMENT	3
REFORM VOLUNTEER FIRE DEPARTMENT/CHOCTAW COUNTY	1
RESERVOIR FIRE DEPARTMENT STATION 1	1
RESERVOIR FIRE PROTECTION DISTRICT	65
RHODES CHAPEL VOLUNTEER FIRE DEPARTMENT	3
RICHLAND FIRE DEPARTMENT	24
RICHLAND POLICE DEPARTMENT	7
RICHMOND VOLUNTEER FIRE DEPARTMENT	12



2016 PARTICIPATION REPORT BY ORGANIZATION (Cont.)

Organization Name	Student Count
RICHTON VOLUNTEER FIRE DEPARTMENT	1
RIDGELAND FIRE DEPARTMENT	145
RIENZI VOLUNTEER FIRE DEPARTMENT	4
RIPLEY VOLUNTEER FIRE DEPARTMENT	2
RIVERSIDE VOLUNTEER FIRE DISTRICT	12
RMR MECHANICAL, INC	1
ROBINHOOD VOLUNTEER FIRE DEPARTMENT	4
ROCK HILL VOLUNTEER FIRE DEPARTMENT	4
ROLLING CREEK VOLUNTEER FIRE DEPARTMENT	6
ROLLING FORK VOLUNTEER FIRE DEPARTMENT	44
ROSE HILL VOLUNTEER FIRE DEPARTMENT	9
ROSEBLOOM VOLUNTEER FIRE DEPARTMENT	1
ROSEDALE VOLUNTEER FIRE DEPARTMENT	7
ROXIE VOLUNTEER FIRE DEPARTMENT	4
RULEVILLE VOLUNTEER FIRE DEPARTMENT	8
RUNNELSTOWN VOLUNTEER FIRE DEPARTMENT	2
RURAL HILL VOLUNTEER FIRE DEPARTMENT	6
RURAL METRO CORPORATION FIRE DEPARTMENT	3
RURAL METRO FIRE DEPARTMENT/FED EX	13
RUSTIN VOLUNTEER FIRE DEPARTMENT	2
S. E. COVINGTON VOLUNTEER FIRE DEPARTMENT	6
S. E. LAMAR VOLUNTEER FIRE DEPARTMENT	7
S. E. UNION FIRE DEPARTMENT	27
S. JONES VOLUNTEER FIRE DEPARTMENT	2
S. LEE COUNTY VOLUNTEER FIRE DEPARTMENT	1
S. MARION VOLUNTEER FIRE DEPARTMENT	18
S. W. ALCORN VOLUNTEER FIRE DEPARTMENT	11
S. W. AMITE VOLUNTEER FIRE DEPARTMENT	3
S. W. COVINGTON VOLUNTEER FIRE DEPARTMENT	1
S. W. LAMAR VOLUNTEER FIRE DEPARTMENT	6
S. W. MADISON FIRE DEPARTMENT	6
S.W. NOXUBEE VOLUNTEER FIRE DEPARTMENT	1
SALEM VOLUNTEER FIRE DEPARTMENT	1
SALTILLO FIRE DEPARTMENT	71
SAM DALE COMMUNITY VOLUNTEER FIRE DEPARTMENT	1
SANDERSVILLE VOLUNTEER FIRE DEPARTMENT	14
SANFORD VOLUNTEER FIRE DEPARTMENT	4
SARDIS LOWER LAKE FIRE DEPARTMENT	19
SARDIS VOLUNTEER FIRE DEPARTMENT	22
SCOوبا VOLUNTEER FIRE DEPARTMENT	1
SCOTT COUNTY SHERIFF'S DEPARTMENT	3
SEBASTOPOL VOLUNTEER FIRE DEPARTMENT	12
SEMINARY VOLUNTEER FIRE DEPARTMENT	6



2016 PARTICIPATION REPORT BY ORGANIZATION (Cont.)

Organization Name	Student Count
SENATOBIA FIRE DEPARTMENT	25
SHADY GROVE VOLUNTEER FIRE DEPARTMENT	1
SHANNON VOLUNTEER FIRE DEPARTMENT	3
SHARON VOLUNTEER FIRE DEPARTMENT	11
SHAW FIRE DEPARTMENT/BOLIVAR COUNTY DISTRICT 5	1
SHERMAN VOLUNTEER FIRE DEPARTMENT	5
SHILOH VOLUNTEER FIRE DEPARTMENT	11
SHIPMAN VOLUNTEER FIRE DEPARTMENT	1
SHUBUTA VOLUNTEER FIRE DEPARTMENT	4
SHUQUALAK VOLUNTEER FIRE DEPARTMENT	1
SILVER CREEK VOLUNTEER FIRE DEPARTMENT	2
SILVER RUN VOLUNTEER FIRE DEPARTMENT	11
SIMPSON COUNTY FIRE COORDINATOR	1
SIMPSON COUNTY FIRE STATION # 7	1
SIMPSON COUNTY SHERIFF'S DEPARTMENT	3
SIMPSON VOLUNTEER FIRE DEPARTMENT	2
SIPSEY RIVER VOLUNTEER FIRE DEPARTMENT	4
SLAYDEN-MT. PLEASANT FIRE DEPARTMENT	50
SLEDGE VOLUNTEER FIRE DEPARTMENT	1
SMITH COUNTY EMA	2
SMITHVILLE VOLUNTEER FIRE DEPARTMENT	9
SNELL VOLUNTEER FIRE DEPARTMENT	5
SNOW LAKE VOLUNTEER FIRE DEPARTMENT	25
SNOWDOWN/PLEASANT HILL VOLUNTEER FIRE DEPARTMENT	5
SOUTH TISHOMINGO VOLUNTEER FIRE DEPARTMENT	2
SOUTHAVEN FIRE DEPARTMENT	166
SOUTHEAST FIRE & RESCUE/STATION 1	1
SOUTHWEST MARION VOLUNTEER FIRE DEPARTMENT	4
SOUTHWEST RANKIN VOLUNTEER FIRE DEPARTMENT	6
SPLUNGE VOLUNTEER FIRE DEPARTMENT	10
SPRING HILL VOLUNTEER FIRE DEPARTMENT/KEMPER COUNTY	1
SPRINGHILL VOLUNTEER FIRE DEPARTMENT/TALLAHATCHIE CO.	7
ST. BERNARD, LA PARISH FIRE DEPARTMENT	6
ST. TAMMANY FIRE DISTRICT #1	1
STALLO VOLUNTEER FIRE DEPARTMENT	6
STAMPLEY VOLUNTEER FIRE DEPARTMENT	11
STANDING PINE VOLUNTEER FIRE DEPARTMENT	4
STAR VOLUNTEER FIRE DEPARTMENT	23
STARKVILLE FIRE DEPARTMENT	116
STATE FIRE ACADEMY	68
STATE FIRE MARSHAL'S OFFICE	36
STENNIS SPACE CENTER/JOHNSON CONTROLS	2
STOLTHAVEN NEW ORLEANS, LLC	10



2016 PARTICIPATION REPORT BY ORGANIZATION (Cont.)

Organization Name	Student Count
STONEWALL VOLUNTEER FIRE DEPARTMENT	3
STREET VOLUNTEER FIRE DEPARTMENT	2
STRINGER VOLUNTEER FIRE DEPARTMENT	18
STRONG HOPE VOLUNTEER FIRE DEPARTMENT	7
STUDENT/NOT WITH CODED DEPARTMENT	1
STURGIS/DIST. 4 VOLUNTEER FIRE DEPARTMENT	5
SUMMERSHILL VOLUNTEER FIRE DEPARTMENT	1
SUMMIT VOLUNTEER FIRE DEPARTMENT/PIKE COUNTY	34
SUMRALL VOLUNTEER FIRE DEPARTMENT	15
SUNNYHILL VOLUNTEER FIRE DEPARTMENT	21
SUNRISE VOLUNTEER FIRE DEPARTMENT	20
SUQUALENA VOLUNTEER FIRE DEPARTMENT	12
SYLVARENA VOLUNTEER FIRE DEPARTMENT/SMITH COUNTY	15
TALLAHATCHIE COUNTY FIRE COORDINATOR	1
TAMINCO	155
TANGIPAHOA PARISH FIRE DISTRICT #1	1
TASK FORCE 1 - MISSISSIPPI	3
TASK FORCE 2 - MISSISSIPPI	31
TASK FORCE 3 - MISSISSIPPI	12
TATE & LYLE	1
TATE COUNTY CIVIL DEFENSE	1
TATE COUNTY DISTRICT 1 FIRE DEPARTMENT	16
TATE COUNTY SHERIFF'S DEPARTMENT	1
TAYLORSVILLE VOLUNTEER FIRE DEPARTMENT	13
TCHULA VOLUNTEER FIRE DEPARTMENT	4
TEASDALE VOLUNTEER FIRE DEPARTMENT	1
TERRY VOLUNTEER FIRE DEPARTMENT	9
THAXTON VOLUNTEER FIRE DEPARTMENT	9
THE CHEMOURS COMPANY	52
THEADVILLE VOLUNTEER FIRE DEPARTMENT	7
THORN VOLUNTEER FIRE DEPARTMENT	2
THORNTON VOLUNTEER FIRE DEPARTMENT	1
THRASHER VOLUNTEER FIRE DEPARTMENT	1
THREE FORKS FIRE DEPARTMENT	3
THREE MILE CORNER VOLUNTEER FIRE DEPARTMENT	2
TILDEN-NEW SALEM FIRE DEPARTMENT	6
TIPPAH COUNTY SHERIFF'S DEPARTMENT	1
TISHOMINGO COUNTY CIVIL DEFENSE	2
TISHOMINGO COUNTY FIRE COORDINATOR	1
TISHOMINGO COUNTY SHERIFF'S DEPARTMENT	1
TOCCOPOLA VOLUNTEER FIRE DEPARTMENT	1
TOMNOLEN VOLUNTEER FIRE DEPARTMENT	8
TOOMSUBA VOLUNTEER FIRE DEPARTMENT	2



2016 PARTICIPATION REPORT BY ORGANIZATION (Cont.)

Organization Name	Student Count
TRI-COMMUNITY VOLUNTEER FIRE DEPARTMENT/MARION CO.	64
TRI-COMMUNITY VOLUNTEER FIRE DEPARTMENT/YAZOO CO.	2
TUNICA VOLUNTEER FIRE DEPARTMENT	20
TUPELO AIRPORT AUTHORITY	8
TUPELO FIRE DEPARTMENT	545
TUSCUMBIA/NEW CHANDLER VOLUNTEER FIRE DEPARTMENT	1
TYLERTOWN VOLUNTEER FIRE DEPARTMENT	5
U.S. ARMY CORP OF ENGINEERS-ERDC SECURITY	1
UNCODED DEPARTMENT OR INDUSTRY	71
UNION CENTER/THEO VOLUNTEER FIRE DEPARTMENT	4
UNION CHURCH VOLUNTEER FIRE DEPARTMENT	5
UNION COUNTY EMA	1
UNION COUNTY SHERIFF'S DEPARTMENT	2
UNION VOLUNTEER FIRE DEPARTMENT/JONES COUNTY	2
UNION VOLUNTEER FIRE DEPARTMENT/LEE COUNTY	5
UNITY-FELLOWSHIP VOLUNTEER FIRE DEPARTMENT	4
UNIVERSITY OF MS MEDICAL CENTER	1
UNIVERSITY OF MS POLICE DEPARTMENT	10
UNIVERSITY OF SOUTHERN MS - HATTIESBURG	5
USES JACKSON MS	1
UTICA VOLUNTEER FIRE DEPARTMENT	20
VALERO REFINING-MERAUX LLC	23
VALLEY GROVE VOLUNTEER FIRE DEPARTMENT	5
VAN VLEET VOLUNTEER FIRE DEPARTMENT	6
VANCE VOLUNTEER FIRE DEPARTMENT	5
VARDAMAN VOLUNTEER FIRE DEPARTMENT	18
VELMA VOLUNTEER FIRE DEPARTMENT	1
VERONA FIRE DEPARTMENT	8
VICKSBURG, CITY OF-WATER AND GAS DEPARTMENT	7
VICKSBURG FIRE DEPARTMENT	326
VICKSBURG-WARREN 911	15
VICTORIA FIRE DEPARTMENT	38
VIMVILLE VOLUNTEER FIRE DEPARTMENT	1
WALLS FIRE DEPARTMENT	73
WALNUT VOLUNTEER FIRE DEPARTMENT	26
WALTERS VOLUNTEER FIRE DEPARTMENT	4
WALTHALL COUNTY 4TH DIST VOLUNTEER FIRE DEPARTMENT	14
WALTHALL COUNTY 3RD DISTRICT FIRE DEPARTMENT	1
WALTHALL COUNTY SHERIFF'S DEPARTMENT	1
WALTHALL VOLUNTEER FIRE DEPARTMENT	2
WARD VOLUNTEER FIRE DEPARTMENT	2
WARREN COUNTY FIRE COORDINATOR	1
WARREN COUNTY FIRE SERVICE	7



2016 PARTICIPATION REPORT BY ORGANIZATION (Cont.)

Organization Name	Student Count
WARREN COUNTY SHERIFF'S DEPARTMENT	2
WASHINGTON COUNTY EMA TRAINING COORDINATOR	2
WASHINGTON COUNTY EMERGENCY MANAGEMENT	1
WASHINGTON COUNTY SHERIFF'S DEPARTMENT	2
WATER VALLEY FIRE DEPARTMENT	8
WATSON VOLUNTEER FIRE DEPARTMENT	49
WAVELAND FIRE DEPARTMENT	3
WAYNE COUNTY SHERIFF'S DEPARTMENT	1
WAYNESBORO FIRE DEPARTMENT	1
WEBB CITY VOLUNTER FIRE DEPARTMENT	4
WEBSTER COUNTY CIVIL DEFENSE	2
WEBSTER COUNTY SHERIFF'S DEPARTMENT	2
WEIR VOLUNTEER FIRE DEPARTMENT	7
WENASOGA VOLUNTEER FIRE DEPARTMENT	2
WESSON VOLUNTEER FIRE DEPARTMENT	5
WEST COVINGTON VOLUNTEER FIRE DEPARTMENT	3
WEST HANCOCK VOLUNTEER FIRE DEPARTMENT	4
WEST HINDS VOLUNTEER FIRE DEPARTMENT	10
WEST MEMPHIS AR FIRE DEPARTMENT	1
WEST POINT FIRE DEPARTMENT	48
WHEELER FRANKSTOWN VOLUNTEER FIRE DEPARTMENT	8
WHYNOT VOLUNTEER FIRE DEPARTMENT	1
WIGGINS FIRE DEPARTMENT	19
WILKINSON VOLUNTEER FIRE DEPARTMENT	3
WINONA FIRE DEPARTMENT	18
WINSTON COUNTY EMA	2
WINSTON COUNTY SHERIFF'S DEPARTMENT	2
WOODLAND VOLUNTEER FIRE DEPARTMENT	4
WOODVILLE VOLUNTEER FIRE DEPARTMENT	12
WREN VOLUNTEER FIRE DEPARTMENT	6
WYATTE-CHULAHOMA FIRE DEPARTMENT/MARSHALL COUNTY	28
WYATTE-CHULAHOMA VOLUNTEER FIRE DEPARTMENT/TATE CTY	6
YALOBUSHA COUNTY FIRE COORDINATOR	1
YALOBUSHA COUNTY SHERIFF'S DEPARTMENT	1
YAZOO CITY FIRE DEPARTMENT	297
YAZOO CITY POLICE DEPARTMENT	2
YAZOO COUNTY FIRE COORDINATOR	1
ZETUS VOLUNTEER FIRE DEPARTMENT	4



“Making A
Difference
When It Matters
The Most”

