

MISSISSIPPI

Fire Academy

**Annual Report
FY 2018**



A Division of the Mississippi Insurance Department

Mississippi State Fire Academy Advisory Board

President of the
Mississippi Fire Chiefs Association
Chief Mike Beyerstedt

President of the
Mississippi Fire Fighters Association
Chief John Pope

State Fire Marshal's Office
Chief Deputy Ricky Davis

President of the
Mississippi Association of Supervisors
Ms. Peggy Hobson-Calhoun

President of the
Mississippi Municipal League
Mayor Les Childress

Manager of the
State Rating Bureau
Mr. Joe Shumaker

Index

Advisory Board.....	2
Index.....	3
Executive Summary.....	4
From Executive Director Reggie Bell.....	5
Introduction.....	6
Campus Facility.....	7-10
Staffing.....	10
Organizational Chart.....	11
State Fire Academy of Mississippi Financial Statement.....	12
Grant Information.....	13
Statistics.....	14
Students Trained by County of Sending Organization.....	15
Certification Bureau.....	16-17
Extension Services Bureau.....	18-19
Special/Industrial Bureau.....	20-21
Other Training & Services.....	22-23
Adjunct Instructors.....	24
Specialized Outside Professional Instructor Affiliations.....	25
Organizational Affiliates.....	26
FY 2017 Participation Report by Type of Program.....	27-32
FY 2017 Participation Report by Organization.....	33-51



It is with great pleasure that I present to you the 2017 Annual Report of the Mississippi State Fire Academy. Two thousand seventeen was a tremendous year for the Academy, marked by major accomplishments that promote our commitment to excellence and our dedication to service.

We would like to thank you for your continued support of the fire service in the State of Mississippi and the State Fire Academy as we continue to be one of the nation's best fire and emergency response training centers.

Executive Director

From Executive Director Reggie Bell

When the Mississippi legislature created the Mississippi State Fire Academy and designated it as the agency for training the state's fire personnel, I am certain they could not have foreseen the growth and progress that would shape the Academy as it exists today. Many changes have occurred in the forty years since the Academy was built. We now train approximately 15,000 students per year by offering more than ninety courses, many with multiple deliveries, and many offered both on campus and off-site through our field delivery program. Our students come from career and volunteer fire departments throughout Mississippi, fire departments outside the state, and even from the private sector. Over the years, business and industrial entities including many Fortune 500 companies have entrusted the Mississippi State Fire Academy with training their employees in fire and emergency response.

Certainly, technology has advanced tremendously in the last forty years, and the Mississippi State Fire Academy remains at the forefront of that advancement. Classrooms and other facilities on campus are equipped with wireless Internet, webcasting, and teleconferencing capabilities. These assets provide us the flexibility to innovate our instruction methods and course delivery platforms as the needs of the students, and the departments and communities they serve, change. We are also well-positioned to continue to adapt in a constantly evolving technological world.

In addition to training those who seek careers in fire fighting and emergency response, we consider it a vital part of our mission to educate ordinary Mississippi citizens about fire prevention and safety. To that end, we offer schools, clubs, and civic groups the opportunity to visit our campus, tour the facilities, and learn how they can help minimize the potential for loss of life and property due to fire. There is no charge for these tours.

A program that has gained tremendous attention is our Fire Academy for Elected/Public Officials. This program is designed to be a fun day. It familiarizes the elected/public officials with the basic duties and operations of their local fire departments. Elected/public officials from state, municipal, and county governments have attended this one-day course. Fire departments have benefitted from the experience and knowledge their government leaders gain in this course.

I am proud to say that for over forty years, the Mississippi State Fire Academy has been and will be...

"Making a Difference When It Matters the Most..."





Introduction

State Fire Academy Mission Statement

To serve the Mississippi Fire Service Community and the World by providing quality education and training in fundamental and advanced skills to save lives and property.
"Making A Difference When It Matters The Most!"

Enabling Legislation

MS Code Annotated Section 45-11-7:

The State Fire Academy was created for the purpose of training and education of persons engaged in municipal, county and industrial fire protection.

The Academy is officially designated as the agency of this state to conduct training for fire personnel on a statewide basis to all duly constituted fire departments.

MS Code Annotated Section 45-11-5:

Creation of a separate account known as the "State Fire Academy Fund" for the deposit of a tax of one-half of one percent (1/2 of 1%) of the gross premium receipts of fire insurance policies levied in the state.

Senate Bill 2362 of the 2016 Regular Legislative Session:

The above legislation changed the direction of the funding received by the Fire Academy to go to the state general fund effective July 1, 2016, in addition to diverting all cash in the account to the state general fund.

MS Code Annotated Section 45-11-7:

The Academy is designated as a division (sub agency) of the Insurance Department.

MS Code Annotated Section 45-11-203:

Within one year of employment, all paid full time fire fighters shall be certified as completing the mandatory training requirements administered by the State Fire Academy.

MS Code Annotated Section 83-1-39:

Requires one member of the sheriff's department to be the county fire investigator and to attend training at the State Fire Academy in arson investigation.

Philosophy

The State Fire Academy is committed and responsible for the training and education of personnel engaged in municipal, county and industrial fire protection. This student body consists of career, volunteer and industrial fire personnel. The Academy has three training areas, which are 1) Certification Services 2) Extension Services and 3) Industrial and Special Services, which all focus on the Academy's only function, which is training. All other areas support the staff and students of these training areas.

The Academy's philosophy is to deliver quality training and instruction to the fire service/emergency response personnel of the State, while adhering to high ethical standards, promoting cooperation among staff with efficiency and integrity in their work while representing the Academy in a professional, courteous, and helpful manner at all times, and safeguarding the assets of the State. The Academy is committed to providing excellent service to its customers by providing training based on National Fire Protection Association (NFPA) standards as well as specialized courses not addressed by NFPA.

Statewide Goal and Benchmark

Public Safety and Order

To protect the public's safety-by providing training to first responders/emergency responders.

The training students receive from the Academy provides them the skills necessary to save lives and property, which will in turn, lower the insurance fire rating which determines the premium rates on business and homeowner's insurance.

Campus Facility:

Construction began in 1974, on the Academy campus in Rankin County, Mississippi. The campus is currently located on approximately 112 acres with more than twenty buildings. Courses are offered to students on or off-campus. Course length can vary from one hour to seven weeks. If on-campus, students may elect to stay in the dormitory, which has seventy-five beds, and they are provided two meals a day in the cafeteria. We currently have seven classrooms, and a dedicated student computer lab/library, in addition to the exercise area for students in the dormitory. Multiple training areas on campus include the following:



A Trench Rescue and Emergency Shoring Prop consists of approximately seventy feet of space for practice in emergency shoring techniques and to allow several scenarios for rescue operations. The prop was a generous donation of equipment, labor, and material from the Associated General Contractors of Mississippi-Municipal Contractors Division. The value of the prop is estimated at a quarter of a million dollars.



The Fire Research Building simulates a three-story residential structure with an attic, and a commercial structure with a basement. The building contains over 4,000 square feet of training space and is equipped with five computer controlled fire/smoke rooms with liquid propane gas fueled fire simulators, a Class A burn room, and a prop that simulates a couch fire with flashover capabilities. A four (4) story drill tower is attached to the burn area.



The original Burn Building has four levels and simulates residential and commercial buildings. This building is currently being utilized as a self contained breathing apparatus (SCBA) training area and collapse rescue training building. The SCBA training area utilizes mazes and artificial smoke for training. The collapse rescue area of the building simulates collapsed ceilings, walls, and floors.



The five-story drill tower provides opportunities for high-rise ladder, rope and firefighting operations. In addition to this tower, there is a communications tower erected for training high angle rescue purposes.



The live burn area consists of five large concrete pads as well as one 5,000 square foot airliner fuselage flammable liquid/LP gas burn prop designed specifically to prevent environmental contamination. These training areas include: a fifty foot flowing fuel fire (LP gas Christmas tree fire); LP gas tank fire; pump seal fire; twenty foot vertical tank fire with exposures; horizontal tank fire with an exposed small tank truck; and a three story evolution simulating a chemical processing plant fire.



The hazardous materials training site consists of a large train derailment simulation with eleven cars.



Two lakes are on campus. One is forty feet deep and is utilized for dive rescue training. The other lake is used as a water source for pump testing fire apparatus.



The confined space training site has over 9,000 cubic feet of enclosed area and a forty-five foot tower. The underground area includes vents and drains with several emergency entries/exits.

A forty-one by fourteen foot water vessel is dry docked for the instruction of offshore personnel.



An arson lab is used to build real life room-like structures with furniture to train in arson detection.



Five aircraft simulators are used in the instruction of aircraft rescue training. A landing gear simulator is at this site along with a side-wall aircraft section used in training. We are recognized by the Federal Aviation Administration as an approved training site for this region. Students from all over the United States attend these courses for the required annual training to be in compliance with the FAA regulations.



The Fire Education and Safety Auditorium will seat up to 300 people and is used for graduations and large meetings of the fire service.



New Classroom Building: Two of the classrooms are theatre style that will seat 50 each, while the other two classrooms are traditional with seating capacity of 30 each. Each of the classrooms has the latest technology for course instruction and wireless capabilities.

Future Enhancements:



Progress is being made on the construction of a new training prop, Structural Collapse Rescue. The prop was designed by staff members and most work is being performed by staff. This prop will consist of material to simulate a collapsed building consisting of concrete, masonry, brick, wood and metal. The training will consist of rescue personnel digging, bracing, shoring, and removing victims of the collapse. Heavy machinery such as bulldozers, backhoes, and cranes will be utilized to remove the debris for the safe rescue training.



The National Natural Gas Association, along with Mississippi 811, and the Mississippi Public Service Commission and several energy companies, have begun the construction process for erecting the “Mississippi Safety City” on the Academy campus. The Mississippi Safety City is a one-of-a-kind, small scale city encompassing two acres that will serve as a training facility for natural gas operators, emergency response personnel, and industrial technicians. The city will contain homes, streets, streetlights and natural gas pipelines. Training will include classroom settings as well as real life simulations of natural gas eruptions and responses, and inspection techniques of gas systems. The estimated cost of this project is one million dollars, which will be donated by the sponsors.

Originally, the Academy was one hundred percent (100%) special funded through an insurance premium tax on insurance policies sold in the state, and course collection fees. Senate Bill 2362 of the 2016 Regular Legislative Session changed the direction of the funding received by the Fire Academy to go to the state general fund effective July 1, 2016, in addition to diverting all cash in the account to the state general fund. Additionally, grant funding is requested and often times received for training emergency response personnel on a statewide basis at little to no cost to the departments/counties.

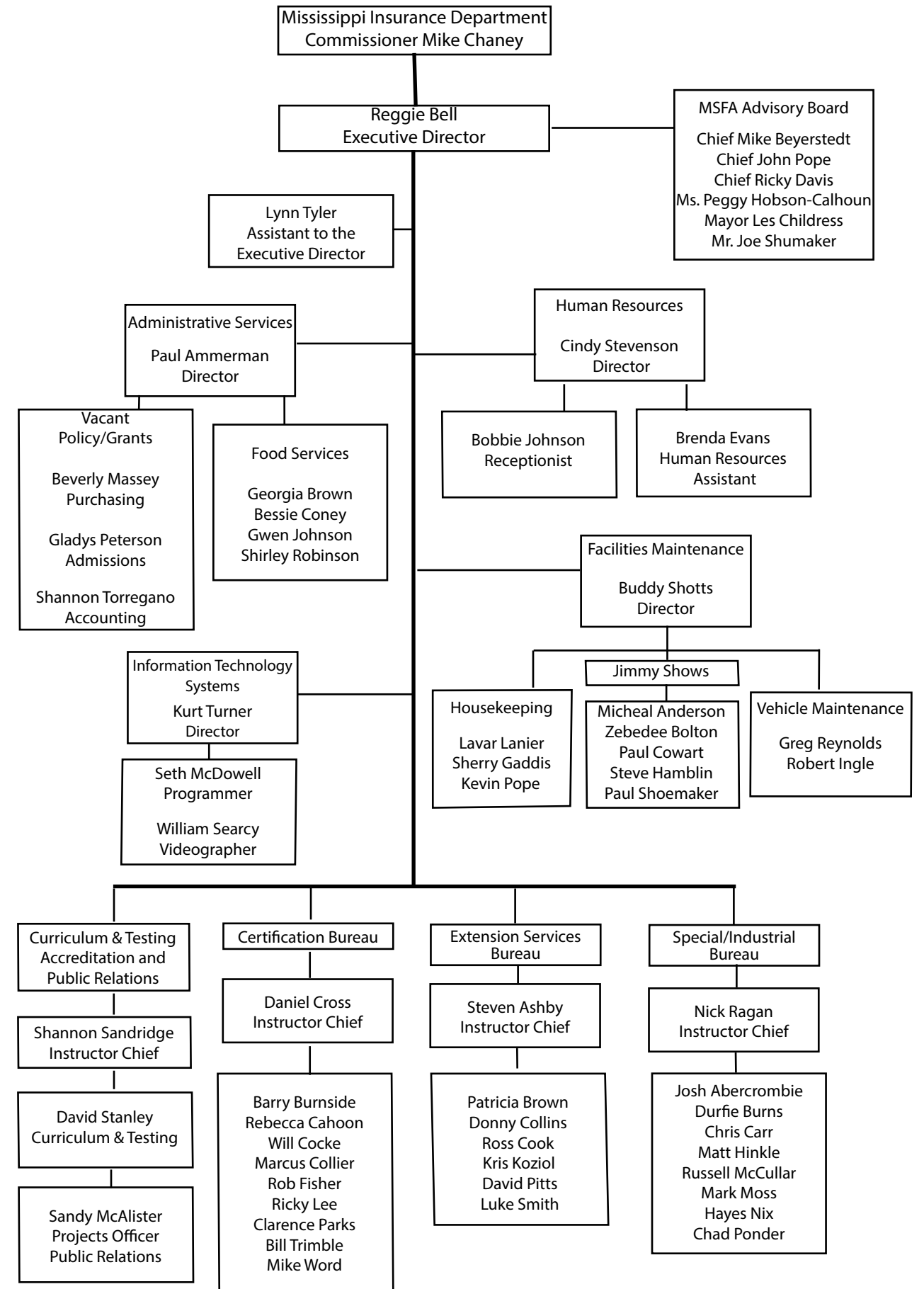
Staffing:

The Academy operates the facility with sixty-three (63) staff members in the following areas:

- Administrative
- Human Resources
- Minimum Standards and Certification Board Secretary
- Information Technology and Videography
- Building, Maintenance, and Vehicle
- Housekeeping
- Cafeteria
- Curriculum/Accreditation and Public Relations
- Instructional Bureaus—Certification, Industrial/Special, Extension Services

The Office of Administrative Services is responsible for the day to day operations of the Academy, student training records and course registration. Human Resources is responsible for staff recruitment, staff training and all employee benefits. The Secretary for the Minimum Standards Board is responsible for all functions related to Board activities. The Informational Technology and Videography Bureau is responsible for all computer systems for staff, the Learning Resource Center for students’ use, custom programming for staff, and videos of class training. The Building, Maintenance, and Vehicle Bureau is responsible for maintaining and repairing all of the agency buildings, equipment, and training props as well as all vehicles owned by the Academy, including Fire Apparatus. Housekeeping is responsible for maintaining the cleanliness of all the buildings, checking students into the dormitory, issuing linens, cleaning rooms, and assisting in grounds keeping when necessary. The Cafeteria Staff is responsible for serving two meals a day to students. The Instructional Bureaus are responsible for all areas of training offered while the Curriculum/Accreditation and Public Relations Bureau is responsible for course accreditation, testing, tours, fire education safety seminars, and publications.

ORGANIZATIONAL CHART



Fund Balance Financial Statement
July 1, 2016 to June 30, 2017

Grant Information
Fiscal Year 2017

State Appropriations House Bill 1640:	\$5,406,325
Grant Funding:	
Sub Grant Funds-Passed through Other State Agencies	\$ 475,025
Federal Grant Funds-Direct	<u>\$ 17,385</u>
Total Appropriations and Grand Funding:	\$5,898,735
Expenses:	
Salaries, Wages, Fringe Benefits	\$3,816,814
Travel	\$ 12,608
Contractual Services	\$ 422,250
Commodities	\$ 571,628
Equipment Purchases	\$ 640,948
Resale Merchandise	<u>\$ 65,930</u>
Total Expenses:	\$5,530,178
Unused Funding as of June 30, 2017:	\$ 368,557

MS Code Annotated Section 45-11-5:

Creation of a separate account known as the "State Fire Academy Fund" for the deposit of a tax of one-half of one percent (1/2 of 1%) of the gross premium receipts of fire insurance policies levied in the state.

Senate Bill 2362 of the 2016 Regular Legislative Session:

The above legislation changed the direction of the funding received by the Fire Academy to go to the state general fund effective July 1, 2016, in addition to diverting all cash in the account to the state general fund.

MS Code Annotated Section 45-11-7 (1):

The State Fire Academy was created for the purpose of training and education of persons engaged in municipal, county and industrial fire protection.

The Academy is officially designated as the agency of this state to conduct training for fire personnel on a statewide basis to all duly constituted fire departments.

The Commissioner of Insurance may establish and charge reasonable fees for the training programs and other services provided by the Academy.

The Academy was able to receive grant funds directly from the Federal Emergency Management Agency/ National Fire Academy. This grant was utilized to pay for deliveries state wide of programs offered by the National Fire Academy.

Grant Funds Received: \$17,385
Deliveries Offered: 4
Students Participating: 100

The Mississippi Office of Homeland Security under the MS Department of Public Safety, awarded grant funds from the State Homeland Security Program. This grant was utilized for on campus and field delivery programs that have been approved through the Office of Domestic Preparedness. Courses offerings include Rope Rescue, Confined Space Rescue, Hazardous Materials Awareness/Operations, Hazardous Materials Technician, Trench Rescue, and NIMS courses.

Grant Funds Received: \$203,936.21
Deliveries Offered: 33
Students Participating: 454

The Mississippi Emergency Management Agency awarded grant funds from the Hazardous Materials Emergency Preparedness Program, under the U S Department of Transportation. This grant was utilized for the delivery of Hazardous Materials Technician I, Hazardous Materials Technician II, Hazardous Materials Awareness/Operations, and Fire Chemistry.

Grant Funds Received: \$125,395.09
Deliveries Offered: 16
Students Participating: 320

The Assistance to Firefighters Grant Program provides funding to local career, volunteer, and combination fire departments as well as state fire training academies. The funding provided is to assist department/training facilities purchase items to aid the organization. With this year's AFG Grant, the Fire Academy purchased a brand new mobile driving simulator.

Grant Funds Received: \$339,766





CERTIFICATION SERVICES BUREAU

- Courses are designed to provide career, combination, and volunteer fire departments a wide range of programs that conform to National Fire Protection Association (NFPA) standards.
- Most courses have obtained International Fire Service Accreditation Congress (IFSAC) and National Board on Fire Service Professional Qualifications (PROBOARD) accreditation.
- Course deliveries consist of campus, field, contract programs, and distant learning programs.



- Emergency Medical Care
- Engine Company Operations
- Fire Department Safety Officer 1521
- Fire Fighter 1001-I-II
- Fire Fighter 1001-I-II: Field Course
- Fire Inspector 1031-I
- Fire Inspector 1031-II
- Fire Investigator 1033
- Fire Officer 1021-I-II
- Fire Officer 1021-I-II: Distant Learner
- Fire Officer 1021-I-II: Field Course
- Fire Service Chaplain
- Fire Service Instructor 1041-I
- Fire Service Instructor 1041-II
- Fire Service Instructor 1041-III
- Fire Service Instructor 1041-I: Field Course
- Fire Service Instructor 1041-I: Online
- Fire Service Instructor 1041-II: Online
- How To Develop And Assist In Fire Fighter Physical Fitness Programs
- Mississippi County Fire Investigator
- Mississippi County Fire Investigator: Annual-In-Service
- Mississippi Executive Fire Officer Program/Fire Officer 1021-III-IV



EXTENSION SERVICES BUREAU

- Most courses are designed to be presented to the volunteer fire fighter.
- Utilizes a cadre' of adjunct instructors to present training programs across the state.
- Administers the National Fire Protection Association (NFPA) 1002 Driver/Operator and National Fire Protection Association (NFPA) 1003 Airport Fire Fighter which hold International Fire Service Accreditation Congress (IFSAC) and National Board on Fire Service Professional Qualifications (PROBOARD) Accreditation.
- Liaison between the Mississippi State Fire Academy and the National Fire Academy.



- Advanced Volunteer Firefighter**
- Aircraft Rescue & Fire Fighter Refresher**
- Airport Fire Fighter NFPA-1003**
- Annual National Fire Academy Weekend**
- Back-To-Basics: Fire Company Fireground Skills Refresher**
- Certified Fireground Resource Technician: Modules I-II**
- Certified Volunteer Driver Operator Levels I-II**
- Driver/Operator NFPA 1002: Aerial Apparatus Field Evaluation**
- Driver/Operator NFPA 1002: Pumper Apparatus Field Evaluation**
- Driver/Operator NFPA 1002: Pumper Apparatus On-Campus Course**
- Emergency Response To Terrorism: Basic Concepts**
- Fire Academy For Elected/Public Officials**
- Fire & Life Safety Educator 1035-I-II-III**
- Fire Fighter Strategies, Tactics and Techniques**
- Hazardous Materials NFPA 472 Awareness/Operations Module 1-2 (Non-IFSAC/PROBOARD)**
- Inter-Departmental Courses (13)**
- Liquefied Petroleum Gas Tactics & Live Fire Drill**
- Managing The Rural Emergency Incident**
- Mississippi Certified Volunteer Fire Fighter I - Module 1**
- Mississippi Certified Volunteer Fire Fighter I - Module 2**
- Mississippi Certified Volunteer Fire Fighter II - Module 1**
- Mississippi Certified Volunteer Fire Fighter II - Module 2**
- Mississippi Chief Fire Officer Designation Program**
- Mississippi Fire Chief Designation Program**
- Mississippi Volunteer Fire Officer-I**
- Mississippi Volunteer Fire Officer-II**
- National Fire Academy Courses (7)**
- Passenger Bus Rescue & Incident Management (Field Delivery)**
- Public Information Officer NFPA 1035**
- Regional Training Courses (22)**



SPECIAL/INDUSTRIAL SERVICES BUREAU

- Programs are generally formatted around the subject of industrial incipient firefighting, technical rescue, and hazardous materials response.
- Most courses have obtained International Fire Service Accreditation Congress (IFSAC) and National Board on Fire Service Professional Qualifications (PROBOARD) accreditation.
- Most special course student fees are supported with federal grant funds.
- Specializes in technical programs geared towards fire department training.
- Program delivery consists of on-campus and off-site programs.



- Certified Advanced Rescue Specialist (CARS)**
- Confined Space Rescue Levels I-II**
- Confined Space Rescue: Modules 1-4**
- Fire Service Management-101**
- Firefighter Intervention Rescue Survival Techniques (FIRST)**
- Fireground Leadership**
- Hazardous Materials Awareness And Operations NFPA 472**
- Hazardous Materials Technician Field Delivery NFPA 472**
- Hazardous Materials Technician-I NFPA 472**
- Hazardous Materials Technician-II NFPA 472**
- Incipient And Structural Fire Brigade Training Programs: Modules I-V**
- Industrial Fire Fighter Refresher Training**
- Industrial On-Site Training Programs**
- NFA Chemistry Of Hazardous Materials: Fire Chem I**
- Rescue Refresher**
- Rope Rescue I: Modules 1-4**
- Rope Rescue Level-I**
- Rope Rescue Level-II**
- Smoke Diver**
- Swift Water & Swiftwater Rescue Levels 1-2**
- Trench Rescue & Emergency Shoring Levels I-II**
- Vehicle Extrication & Rescue Levels I-II**

OTHER EXTENSION SERVICES



FIRE PUMP REBUILDING CLASS



Fire Apparatus Testing



The Curriculum/Testing Bureau handles all aspects of testing and accreditation for all of our certification programs. We currently have 24 levels of certification accredited by the International Fire Service Accreditation Congress (IFSAC) and 30 levels of certification accredited by the National Board on Fire Service Professional Qualifications (PROBOARD). The majority of our programs are dually accredited. All of our programs are based on National Fire Protection Association Standards.

Administers the Candidate Physical Ability Test (CPAT) examination for the Mississippi Fire Personnel Minimum Standards and Certification Board (MSCB).



Our facility is also available for public tours. Scheduled tours can be arranged for most types of educational, civic, and special groups. An age appropriate fire prevention/safety information program is delivered to each group along with a tour of the campus. There is no charge for the tours.



The Mississippi State Fire Academy Honor Guard was established in 2008 to serve the fire fighters around the state in their time of need, to help remember and memorialize any fire fighter that serves or served this great state as a token of our appreciation on a state level

Adjunct Instructor Affiliations Fiscal Year 2017



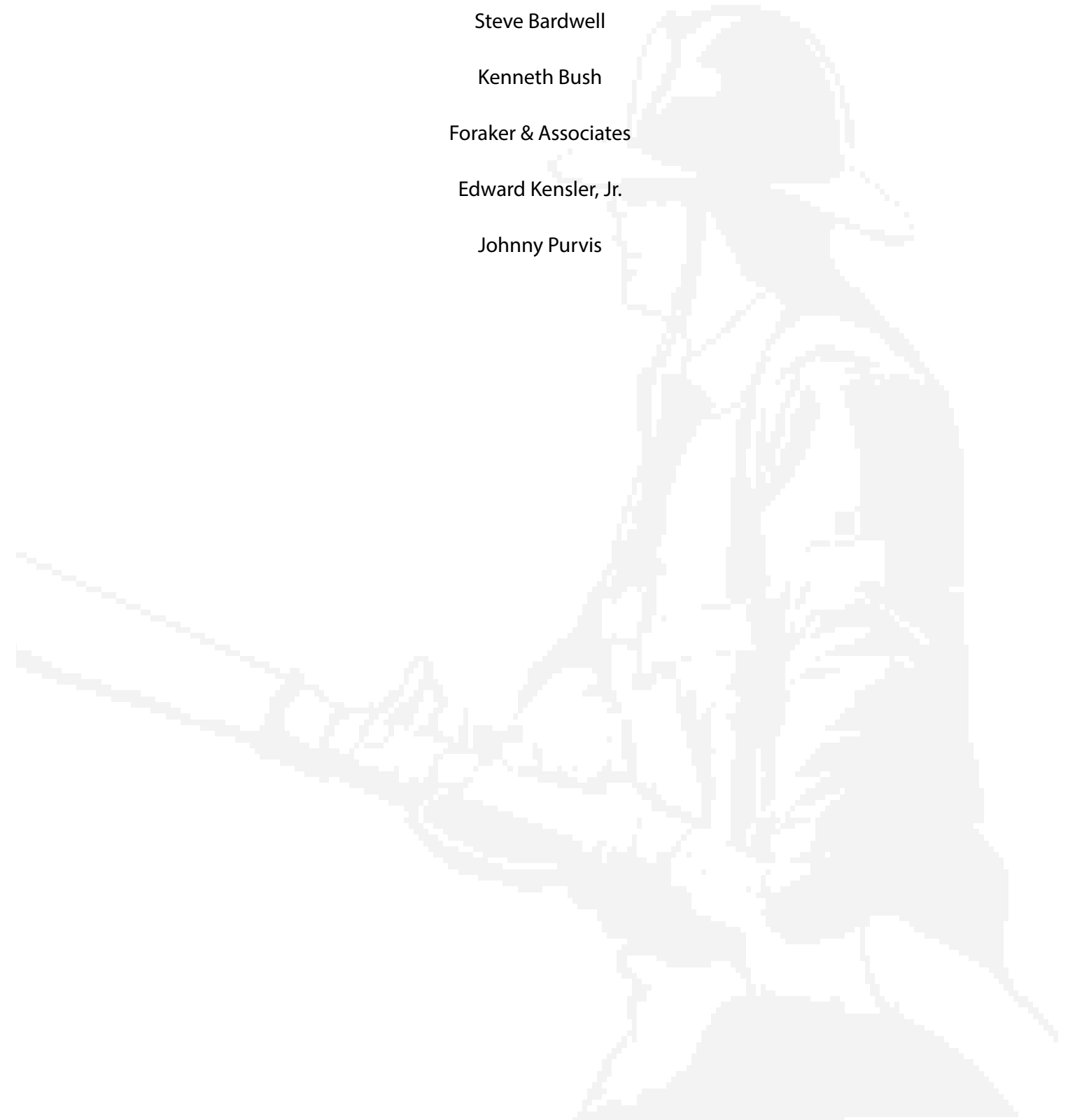
The Academy contracted with the following individuals for course deliveries during the fiscal year.

Matt Bailey	Johnny Leos
Justin Boulter	Turner Luttrell
Charles Brown	Sidney Malone
Finley Brown	Tommy Malone
Robert Bush	Curtiss Marbury
David Chance	Ben McMinn
Austin Check	Jerry Mills
Pierce Clark	Vernon Morris
Barry Collins	Craig Nash
Charles Collins	Robert Parker
Phillip Cummings	Kevin Reeves
Byran Cunningham	Norris Robbins
Michael Dimartino	Jeffrey Roy
Scott Dubuisson	Michael Rutherford
Juan Garza	Darryl Smith
Michael Gettinger	Lonagcio Smith
Kendall Golden	Raleigh Sprouse
Ginger Hand	Adam Stone
Kenneth Holbrook	Larry Warrington
George Horn	Michael Watts
Robert Hutto	Mark Whiteside
Tom Lariviere	

Specialized Outside Professional Instructor Affiliations Fiscal Year 2017

The Academy contracted with the following professional instructors/organizations utilizing grant funding, for course deliveries during the fiscal year.

Steve Bardwell
Kenneth Bush
Foraker & Associates
Edward Kensler, Jr.
Johnny Purvis



Organizational Affiliations

Much of the development and improvement of a successful training program comes as the direct result of dialogue established with other persons in the business. The members of the State Fire Academy staff are affiliated with many related organizations and thus have opportunities to share ideas. Following is a list of organizations in which staff members are involved.

- International Association of Fire Chiefs
- International Code Council
- International Fire Service Accreditation Congress (IFSAC)
- Mississippi Administrative Assistants Professional Association
- Mississippi Association of Governmental Purchasing and Property Agents
- Mississippi Association of Personnel Administrators
- Mississippi Association of Public Fire Safety Educators
- Mississippi Fire Chiefs Association
- Mississippi Fire Fighters Association
- Mississippi Fire Service Instructors Association
- National Association of Arson Investigators
- National Fire Protection Association



2017 PARTICIPATION REPORT BY TYPE OF PROGRAM

Certification Services Bureau

Course Name	Student Count
CPAT EXAM	319
DRIVER/OPERATOR NFPA 1002: PUMPER APPARATUS	7
EMERGENCY MEDICAL CARE	5
ENGINE COMPANY OPERATIONS	20
FIRE DEPARTMENT SAFETY OFFICER 1521	19
FIRE DEPARTMENT SAFETY OFFICER 1521 FIELD DELIVERY	8
FIRE FIGHTER 1001-I-II	181
FIRE FIGHTER 1001-I-II FIELD DELIVERY	59
FIRE INSPECTOR 1031-I	41
FIRE INSPECTOR 1031-II	15
FIRE INVESTIGATOR 1033	37
FIRE OFFICER 1021-I	6
FIRE OFFICER 1021-I FIELD DELIVERY	2
FIRE OFFICER 1021-I-II	41
FIRE OFFICER 1021-I-II FIELD DELIVERY	12
FIRE OFFICER 1021-II	2
FIRE SERVICE CHAPLAIN	13
FIRE SERVICE INSTRUCTOR 1041-I LEVEL I	50
FIRE SERVICE INSTRUCTOR 1041-I FIELD DELIVERY	110
FIRE SERVICE INSTRUCTOR 1041-I ON-LINE	14
FIRE SERVICE INSTRUCTOR 1041-II LEVEL II	15
FIRE SERVICE INSTRUCTOR 1041-II DISTANT LEARNING	1
FIRE SERVICE INSTRUCTOR 1041-III	11
HAZ MAT NFPA 472 OPERATIONS WITH/PPE & PRODUCT CONTROL	181
HAZ MAT NFPA 472 OPERATIONS W/PPE & PRODUCT CONTROL FIELD DELIVERY	46
HOW TO DEVELOP/ASSIST IN FF PHYSICAL FITNESS PROGRAMS	10
IS 100: INTRODUCTION TO ICS	192
IS 200: ICS FOR SINGLE RESOURCE AND INITIAL ACTIONS	168
MISSISSIPPI COUNTY FIRE INVESTIGATOR	17
MISSISSIPPI COUNTY FIRE INVESTIGATOR: ANNUAL IN-SERVICE	38
TORNADO AWARENESS AWR-326	26



2017 PARTICIPATION REPORT BY TYPE OF PROGRAM

Extension Services Bureau

Course Name	Student Count
ADVANCED VOLUNTEER FIRE FIGHTER	7
AIRCRAFT RESCUE FIRE FIGHTER REFRESHER TRAINING (3-HOUR)	209
AIRCRAFT RESCUE FIRE FIGHTER REFRESHER TRAINING (6-HOUR)	21
AIRCRAFT RESCUE FIRE FIGHTER REFRESHER TRAINING (8-HOUR)	29
AIRCRAFT RESCUE FIRE FIGHTER REFRESHER TRAINING (24-HOUR)	1
AIRPORT FIRE FIGHTER	23
APPARATUS PUMP OPERATOR-MODULE 1: BASICS	76
APPARATUS PUMP OPERATOR-MODULE 2: MWS	63
ATMOS ENTERGY NATURAL GAS 101 FOR FIRE FIGHTERS	320
AUTOMOBILE EXTRICATION	465
BASIC FIRE COMPANY FIREGROUND SKILLS REFRESHER	30
BASIC RESCUE OPERATIONS	45
CALLING THE MAYDAY I	11
CALLING THE MAYDAY II	11
CERTIFIED FIREGROUND RESOURCE TECHNICIAN-MODULE 1	47
CERTIFIED FIREGROUND RESOURCE TECHNICIAN-MODULE 2	43
CERTIFIED RURAL FIRE APPARATUS-DRIVER/OPERATOR-I	25
CERTIFIED VOLUNTEER DRIVER OPERATOR: LEVEL I	97
CERTIFIED VOLUNTEER DRIVER OPERATOR: LEVEL II	16
COMMUNITY RISK REDUCTION: MFMO	20
CORRECTIONAL FACILITIES EVACUATION ISSUES	16
CURRENT MS LAB TRENDS	53
DRIVER/OPERATOR NFPA 1002: PUMPER APPARATUS	81
DRIVER/OPERATOR NFPA 1002: PUMPER APPARATUS FIELD DELIVERY	82
ELECTRICAL HAZARDS ON THE EMERGENCY SCENE	45
EMERGENCY MEDICAL CARE: NFPA 1001 BASED PROGRAM	6
EMERGENCY RESPONSE TO TERRORISM: BASIC CONCEPTS	8
EMERGENCY SPANISH FOR FIREFIGHTERS	51
EMS OPERATIONS	23
ENGINE COMPANY OPERATIONS - PART 1	20
ESAP EDUCATION	47
FIRE & LIFE SAFETY EDUCATOR 1035-I	13
FIRE & LIFE SAFETY EDUCATOR 1035: LEVEL I	11
FIRE & LIFE SAFETY EDUCATOR 1035: LEVEL II	7
FIRE & LIFE SAFETY EDUCATOR 1035: LEVEL III	12
FIRE APPARATUS TESTING	5
FIRE ATTACK FOR THE MODERN ERA	141
FIRE FIGHTER ESSENTIAL SKILLS - I	48
FIRE FIGHTER ESSENTIAL SKILLS - II	64
FIRE FIGHTER SELF RESCUE	37
FIRE SERVICE RESCUE 101	61
FIREGROUND SUPPORT OPERATIONS	56
FIRST HANDS	13



2017 PARTICIPATION REPORT BY TYPE OF PROGRAM

Extension Services Bureau (Cont.)

Course Name	Student Count
FROM LABEL TO A BRAND: THE INSPIRATION OF ANTONIO V. WRIGHT	47
GETTING STARTED AS A NEW TRAINING OFFICER	31
GRAIN BIN EXTRICATION OPERATIONS	408
HALE PUMP	11
HAZARDOUS MATERIALS AWARENESS/OPERATIONS	90
HAZARDOUS MATERIALS AWARENESS/OPERATIONS-MODULE 1	119
HAZARDOUS MATERIALS NFPA 472 AWARENESS/OPERATIONS	16
HAZARDOUS MATERIALS NFPA 472 AWARENESS/OPERATIONS	4
HAZARDOUS MATERIALS: INITIAL RESPONSE	13
HIGHER EDUCATION & PROFESSIONAL DEVELOPMENT IN FIRE SERVICE	52
HUMAN TRAFFICKING: FIRE SERVICE INVOLVEMENT	270
INCIDENT SAFETY OFFICER	22
INDUSTRIAL REFRESHER FIRE FIGHTER TRAINING	7
INTERNAL CUSTOMER SERVICE	46
KEEP KIDS FIRE SAFE FOUNDATION	38
LEADERSHIP I FOR FIRE & EMS: STRATEGIES FOR COMPANY SUCCESS	31
LEADERSHIP II FOR FIRE & EMS: STRATEGIES FOR COMPANY SUCCESS	51
LEADERSHIP III: STRATEGIES FOR SUPERVISORY SUCCESS	56
LEADERSHIP: WHERE'S YOUR VISION & DO YOU HAVE A PLAN	52
LP-GAS TACTICS & LIVE FIRE DRILL	76
MANAGING THE RURAL EMERGENCY INCIDENT	39
MASS CASUALTY & DISASTER BASICS	24
MISSISSIPPI CERTIFIED VOLUNTEER FIRE FIGHTER [NFPA 1001-BASED]	21
MISSISSIPPI CERTIFIED VOLUNTEER FIRE FIGHTER I	222
MISSISSIPPI CERTIFIED VOLUNTEER FIRE FIGHTER II: MODULE I	181
MISSISSIPPI FIRE FIGHTER SAFETY	91
MISSISSIPPI VOLUNTEER FIRE FIGHTER I MODULE I CLASSROOM	524
MISSISSIPPI VOLUNTEER FIRE FIGHTER 1: UP-GRADE-MODULE 2	1
MISSISSIPPI VOLUNTEER FIRE OFFICER-I	52
MISSISSIPPI CERTIFIED VOLUNTEER FIRE FIGHTER II: MODULE 2	182
NATIONAL TRAFFIC INCIDENT MANAGEMENT	1675
NATIONAL TRAFFIC INCIDENT MANAGEMENT RESPONDER	56
NATIONAL TRAFFIC INCIDENT MANAGEMENT: MODULE I	110
NATIONAL TRAFFIC INCIDENT MANAGEMENT: MODULE II	109
NATIONAL TRAFFIC INCIDENT MANAGEMENT: TRAIN-THE-TRAINER 6-HOUR	3
NATIONAL TRAFFIC INCIDENT MANAGEMENT: TRAIN-THE-TRAINER 12-HOUR	1
NATIONAL FIRE ACADEMY: SHAPING THE FUTURE	22
NATURAL GAS RESPONSE CONSIDERATIONS FOR FIRE DEPARTMENTS	49
NEW FIRE CHIEF I: CHALLENGING ISSUES	29
NEW FIRE CHIEF II: ADMINISTRATIVE ISSUES	30
NIMS ICS-300 (INTERMEDIATE ICS)	1
NIMS ICS-300 (INTERMEDIATE ICS) 16-HOUR	33
NIMS ICS 400 (ADVANCED ICS)	1



2017 PARTICIPATION REPORT BY TYPE OF PROGRAM

Extension Services Bureau (Cont.)

Course Name	Student Count
OCCUPATIONAL CANCER AWARENESS & PREVENTION FOR FIRE SERVICE	52
OPERATING EMERGENCY VEHICLES-ANNUAL REFRESHER	56
OPERATING EMERGENCY VEHICLES-ANNUAL REFRESHER - EMR	37
OPERATION AWARENESS/RESPONSE TO RAILROAD CARS	101
PERSONNEL ACCOUNTABILITY: TWO-IN/TWO-OUT RULE	105
POST AIRCRAFT ACCIDENT RESPONSE TRAINING	19
PRESENTATION OF FIRE EDUCATION PROGRAMS: CITY OF MOBILE	38
PROMOTION OF FIRE EDUCATION PROGRAMS: STATE OF LA	38
PSYCHOLOGICAL FIRST AID	46
PSYCHOLOGY OF EDUCATING THE ADULT LERNER PT-1	52
RAILROAD SAFETY OPERATING SAFETY WITH KNOWLEDGE	53
RAPID INTERVENTION TEAMS	21
RESPONDING TO FIRE/RESCUE INCIDENTS: 911 PERSONNEL	10
RESPONSE TO NEW VEHICLE FIRES	195
ROPE RESCUE I - MODULE 2	14
SEARCH & RESCUE FOR DISASTER RESPONSES	164
SHAPING THE FUTURE	18
SIDE BY SIDE RESIDENTIAL SPRINKLER FOR DEMONSTRATION	38
STAYING ALIVE IN THE FIRE SERVICE	19
STRATEGIES FOR FIRE FIGHTER PERSONAL SUCCESS	16
STRATEGY & TACTICS FOR INITIAL COMPANY OPERATIONS	23
THE FIRE APPARATUS DRIVER	110
THE GHOST IN THE MACHINE: CYBER THREATS & SECURITY ISSUES	47
TOP TEN TIPS FOR KEEPING YOUR OFFICE COMPUTER SAFE	47
TRAINING, RESPONDING AND RETURNING HOME ALIVE	92
UNMANNED AIRCRAFT [FEMA]	36
VOLUNTEER FIRE FIGHTER - MODULE 1 - 2ND ATTEMPT	21
VOLUNTEER FIRE FIGHTER INSTRUCTOR ORIENTATION	43
WAGE & HOUR RESPONSIBILITIES, TRENDS, TIPS/NEW FLSA STANDARDS	47
WATER BASED FIRE PROTECTION SYSTEM PLANS & REVIEWS	24



2017 PARTICIPATION REPORT BY TYPE OF PROGRAM

Industrial Services Bureau

Course Name	Student Count
CHLOREP TRAINING	165
INDUSTRIAL FIRE BRIGADE TRAINING	10
INDUSTRIAL INTERIOR/EXTERIOR REFRESHER FIRE FIGHTER TRAINING	74
INDUSTRIAL REFRESHER FIRE FIGHTER TRAINING (8-HOUR)	117
INDUSTRIAL REFRESHER FIRE FIGHTER TRAINING (16-HOUR)	19
INDUSTRIAL REFRESHER FIRE FIGHTER TRAINING (24-HOUR)	44
INDUSTRIAL RESCUE REFRESHER (16-HOUR)	26
REFRESHER HAZ MAT TRAINING	8



2017 PARTICIPATION REPORT BY TYPE OF PROGRAM

Special Services Bureau

Course Name	Student Count
ADVANCED ROPE RESCUE WORKSHOP: WILDERNESS	8
CERTIFIED ADVANCED RESCUE TECHNICIAN	12
CHLORINE/COMMUNICATIONS WITH THE MEDIA	107
CONFINED SPACE RESCUE	64
CONFINED SPACE RESCUE MODULE 1	126
CONFINED SPACE RESCUE MODULE 2	123
CONFINED SPACE RESCUE MODULE 3	119
CONFINED SPACE RESCUE MODULE 4	118
DECONTAMINATION/CHEMICAL PROTECTIVE CLOTHING	105
FIRE SERVICE MANAGEMENT 101	28
FIREFIGHTER INTERVENTION RESCUE SURVIVAL TECHNIQUES	70
FIREGROUND LEADERSHIP	76
HAZARDOUS MATERIALS FOR FIRST RESPONDERS	12
HAZARDOUS MATERIALS INCIDENT COMMAND	9
HAZARDOUS MATERIALS OPERATIONS WITH PPE & CONTROL	5
HAZARDOUS MATERIALS TECHNICIAN	104
HAZARDOUS MATERIALS TECHNICIAN - I	34
HAZARDOUS MATERIALS TECHNICIAN-II	60
INDUSTRIAL INTERIOR/EXTERIOR REFRESHER FIRE FIGHTER TRAINING	21
INDUSTRIAL REFRESHER FIRE FIGHTER TRAINING	13
NON-BULK CONTAINERS/HIGHWAY CARRIERS/RAIL CARS	105
REFRESHER HAZ MAT TRAINING	19
RESCUE REFRESHER	6
RESCUE REFRESHER (8-HOUR)	37
RESPONDING TO HAZARDOUS MATERIALS INCIDENTS	104
ROPE RESCUE I - MODULE 1	87
ROPE RESCUE I - MODULE 2	85
ROPE RESCUE I - MODULE 3	98
ROPE RESCUE I - MODULE 4	98
ROPE RESCUE II	51
ROPE RESCUE TECHNICIAN - I	90
SMOKE DIVER	45
SOURCES OF ASSISTANCE/HAZ MAT ICS/CHEM. TERMS & DEFINITIONS	115
SURFACE WATER & SWIFTWATER RESCUE LEVEL 1 & 2	17
TOXICOLOGY/MONITORING DEVICES/WEAPONS OF MASS DESTRUCTION	107
TRENCH RESCUE AND EMERGENCY SHORING TECHNICIAN	52
VEHICLE ARSON TRAINING BY GEICO INSURANCE	54
VEHICLE EXTRICATION & RESCUE : LEVELS I & II	50



2017 PARTICIPATION REPORT BY ORGANIZATION

Organization Name	Student Count
47TH CIVIL SUPPORT TEAM	1
ABEL'S STORE VOLUNTEER FIRE DEPARTMENT	2
ABERDEEN FIRE DEPARTMENT	19
ACKERMAN FIRE DEPARTMENT	9
ADAMS COUNTY EMERGENCY MANAGEMENT	6
ADAMS COUNTY FIRE COORDINATOR	4
ADATON/SELF CREEK FIRE DEPARTMENT	7
AGRICOLA VOLUNTEER FIRE DEPARTMENT	1
AKZO NOBEL	24
ALCORN COUNTY FIRE COORDINATOR	1
ALCORN COUNTY FIRE SERVICES	8
ALCORN STATE UNIVERSITY	4
ALGOMA VOLUNTEER FIRE DEPARTMENT	4
ALLEN VOLUNTEER FIRE DEPARTMENT	9
ALPHABA/COCKRUM/INGRAMS FIRE DEPARTMENT	5
ALPINE VOLUNTEER FIRE DEPARTMENT	3
ALTITUDE VOLUNTEER FIRE DEPARTMENT	1
AMACKERTOWN VOLUNTEER FIRE DEPARTMENT	6
AMORY FIRE DEPARTMENT	37
AMR AMBULANCE SERVICE	7
ANGUILLA VOLUNTEER FIRE DEPARTMENT	1
ARCOLA VOLUNTEER FIRE DEPARTMENT	10
ARKABUTLA VOLUNTEER FIRE DEPARTMENT	6
ARLINGTON VOLUNTEER FIRE DEPARTMENT/PERRY COUNTY	1
ASHLAND VOLUNTEER FIRE DEPARTMENT	5
ATTALA COUNTY CENTRAL FIRE DEPARTMENT	34
ATTALA COUNTY SHERIFF'S DEPARTMENT	1
ATTALA COUNTY/FRIENDSHIP VOLUNTEER FIRE DEPARTMENT	2
BAILEY VOLUNTEER FIRE DEPARTMENT	10
BALDWIN VOLUNTEER FIRE DEPARTMENT	3
BANNER VOLUNTEER FIRE DEPARTMENT/CALHOUN COUNTY	8
BARTAHATCHIE VOLUNTEER FIRE DEPARTMENT	2
BARTON VOLUNTEER FIRE DEPARTMENT/MARSHALL COUNTY	11
BASIN VOLUNTEER FIRE DEPARTMENT	2
BASSFIELD VOLUNTEER FIRE DEPARTMENT	6
BATESVILLE FIRE DEPARTMENT	220
BATESVILLE POLICE DEPARTMENT	16
BAY SPRINGS VOLUNTEER FIRE DEPARTMENT	12
BAY ST. LOUIS FIRE DEPARTMENT	12
BAYSIDE PARK VOLUNTEER FIRE DEPARTMENT	1
BEAUMONT VOLUNTEER FIRE DEPARTMENT	7
BEAVER LAKE VOLUNTEER FIRE DEPARTMENT	10
BEAVER MEADOWS VOLUNTEER FIRE DEPARTMENT	3



2017 PARTICIPATION REPORT BY ORGANIZATION (Cont.)

Organization Name	Student Count
BECKER-ATHENS VOLUNTEER FIRE DEPARTMENT	11
BECKHAM VOLUNTEER FIRE DEPARTMENT	7
BELDEN VOLUNTEER FIRE DEPARTMENT	2
BELHAVEN UNIVERSITY	10
BELMONT FIRE DEPARTMENT	9
BELZONI FIRE DEPARTMENT	12
BENCH VOLUNTEER FIRE DEPARTMENT	3
BENNDALE VOLUNTEER FIRE DEPARTMENT	2
BENTON COUNTY SHERIFF'S DEPARTMENT	1
BENTON FIRE DEPARTMENT	1
BENTON VOLUNTEER FIRE DEPARTMENT	6
BENTONIA VOLUNTEER FIRE DEPARTMENT	6
BETHEDEN VOLUNTEER FIRE DEPARTMENT	15
BETHEL VOLUNTEER FIRE DEPARTMENT	10
BEULAH HUBBARD VOLUNTEER FIRE DEPARTMENT/NEWTON COUNTY	6
BEXLEY VOLUNTEER FIRE DEPARTMENT	2
BIG CREEK VOLUNTEER FIRE DEPARTMENT	7
BIG LEVEL VOLUNTEER FIRE DEPARTMENT	1
BIGGERSVILLE VOLUNTEER FIRE DEPARTMENT	3
BILOXI FIRE DEPARTMENT	267
BIRMINGHAM RIDGE FIRE PROTECTION DISTRICT	2
BLACKLAND VOLUNTEER FIRE DEPARTMENT	6
BLUE MOUNTAIN VOLUNTEER FIRE DEPARTMENT	1
BLYTHEVILLE FIRE DEPARTMENT	14
BOGGY VOLUNTEER FIRE DEPARTMENT	20
BOGUE CHITTO VOLUNTEER FIRE DEPARTMENT	11
BOLIVAR COUNTY FIRE DEPARTMENT	82
BOLTON VOLUNTEER FIRE DEPARTMENT	13
BOONEVILLE FIRE DEPARTMENT	64
BOVINA VOLUNTEER FIRE DEPARTMENT	27
BRANDON FIRE DEPARTMENT	341
BRANDON POLICE DEPARTMENT	2
BRAXTON VOLUNTEER FIRE DEPARTMENT	15
BRIDGETOWN VOLUNTEER FIRE DEPARTMENT	14
BROOKHAVEN FIRE DEPARTMENT	20
BROOKLYN VOLUNTEER FIRE DEPARTMENT	16
BROOKSVILLE VOLUNTEER FIRE DEPARTMENT	37
BROWNSVILLE VOLUNTEER FIRE DEPARTMENT	1
BRUCE VOLUNTEER FIRE DEPARTMENT	19
BUDE VOLUNTEER FIRE DEPARTMENT	18
BUNKOM HILL/NEW HOPE VOLUNTEER FIRE DEPARTMENT	4
BURNSVILLE VOLUNTEER FIRE DEPARTMENT	12
BURTON VOLUNTEER FIRE DEPARTMENT	20



2017 PARTICIPATION REPORT BY ORGANIZATION (Cont.)

Organization Name	Student Count
BYHALIA VOLUNTEER FIRE DEPARTMENT	77
BYNUM VOLUNTEER FIRE DEPARTMENT	17
BYRAM FIRE DEPARTMENT	58
BYRAM VOLUNTEER FIRE DEPARTMENT	1
BYWY VOLUNTEER FIRE DEPARTMENT/CHOCTAW COUNTY	3
CAIRO VOLUNTEER FIRE DEPARTMENT	2
CALEDONIA FIRE DEPARTMENT/LOWNDES COUNTY DISTRICT 1	2
CALHOUN CITY VOLUNTEER FIRE DEPARTMENT	10
CALHOUN COUNTY SHERIFF'S DEPARTMENT	2
CALHOUN VOLUNTEER FIRE DEPARTMENT	9
CANADIAN NATIONAL RAILWAY	2
CANNONSBURG/CHURCH HILL VOLUNTEER FIRE DEPARTMENT	10
CANTON FIRE DEPARTMENT	21
CARNES VOLUNTEER FIRE DEPARTMENT	21
CARRIERE VOLUNTEER FIRE DEPARTMENT	11
CARTHAGE FIRE DEPARTMENT	22
CASCILLA VOLUNTEER FIRE DEPARTMENT	4
CASON VOLUNTEER FIRE DEPARTMENT	22
CATO VOLUNTEER FIRE DEPARTMENT	31
CAUSEYVILLE VOLUNTEER FIRE DEPARTMENT	2
CAYCE VOLUNTEER FIRE DEPARTMENT	46
CENTER RIDGE VOLUNTEER FIRE DEPARTMENT	2
CENTER VOLUNTEER FIRE DEPARTMENT/UNION COUNTY	10
CENTRAL CLAY COUNTY/#600 FIRE DEPARTMENT	7
CENTRAL GEORGE COUNTY VOLUNTEER FIRE DEPARTMENT	1
CENTRAL JACKSON COUNTY FIRE DEPARTMENT	52
CENTRAL JASPER COUNTY VOLUNTEER FIRE DEPARTMENT	2
CENTRAL MS CORRECTIONAL FACILITY	35
CENTRAL OKTIBBEHA /LONGVIEW FIRE DEPARTMENT	13
CHARLESTON VOLUNTEER FIRE DEPARTMENT	4
CHATTANOOGA HAMILTON COUNTY RESCUE	1
CHICKASAW COUNTY SHERIFF'S DEPARTMENT	1
CHICKEN BONE FIRE DEPARTMENT	5
CHLORINE INSTITUTE	165
CHOCTAW FIRE DEPARTMENT	19
CHUNKY VOLUNTEER FIRE DEPARTMENT	3
CLAIBORNE COUNTY FIRE DEPARTMENT	10
CLARKDALE VOLUNTEER FIRE DEPARTMENT	14
CLARKE COUNTY FIRE SERVICE	1
CLARKSDALE FIRE DEPARTMENT	104
CLAY COUNTY SHERIFF'S DEPARTMENT	2
CLEAR SPRINGS VOLUNTEER FIRE DEPARTMENT	2
CLEM VOLUNTEER FIRE DEPARTMENT	7



2017 PARTICIPATION REPORT BY ORGANIZATION (Cont.)

Organization Name	Student Count
CLEVELAND FIRE DEPARTMENT	47
CLINTON FIRE DEPARTMENT	115
CLINTON POLICE DEPARTMENT	1
COAHOMA COUNTY FIRE COORDINATOR	1
COAHOMA COUNTY FIRE DEPARTMENT	152
COAHOMA COUNTY SHERIFF'S DEPARTMENT	1
COFFEEVILLE VOLUNTEER FIRE DEPARTMENT	5
COLDWATER VOLUNTEER FIRE DEPARTMENT	17
COLES POINT VOLUNTEER FIRE DEPARTMENT	15
COLLIERVILLE FIRE DEPARTMENT	1
COLLINS FIRE DEPARTMENT	18
COLLINS POLICE DEPARTMENT	11
COLLINSVILLE VOLUNTEER FIRE DEPARTMENT	18
COLUMBIA FIRE DEPARTMENT	12
COLUMBUS FIRE DEPARTMENT	69
COMBAT READINESS TRAINING CENTER FIRE DEPARTMENT	2
COMO VOLUNTEER FIRE DEPARTMENT	2
CONEHATTA VOLUNTEER FIRE DEPARTMENT	8
COPIAH COUNTY EMERGENCY MANAGEMENT	8
CORINTH FIRE DEPARTMENT	328
COUNTY LINE VOLUNTEER FIRE DEPARTMENT	2
COURTLAND VOLUNTEER FIRE DEPARTMENT	12
COYT VOLUNTEER FIRE DEPARTMENT/WAYNE COUNTY	1
CRENSHAW VOLUNTEER FIRE DEPARTMENT	5
CROSSROADS VOLUNTEER FIRE DEPARTMENT/HINDS COUNTY	1
CROWDER VOLUNTEER FIRE DEPARTMENT	1
CRYSTAL SPRINGS FIRE DEPARTMENT	1
CRYSTAL SPRINGS VOLUNTEER FIRE DEPARTMENT	1
CUEVAS VOLUNTEER FIRE DEPARTMENT	2
CULKIN VOLUNTEER FIRE DEPARTMENT	80
D'IBERVILLE FIRE DEPARTMENT	36
DAMASCUS FIRE DEPARTMENT	11
DECATUR VOLUNTEER FIRE DEPARTMENT	1
DEKALB VOLUNTEER FIRE DEPARTMENT	16
DENNIS VOLUNTEER FIRE DEPARTMENT	8
DENTVILLE VOLUNTEER FIRE DEPARTMENT	4
DEPARTMENT OF INSURANCE	1
DERBY-WHITESANDS VOLUNTEER FIRE DEPARTMENT	1
DERMA VOLUNTEER FIRE DEPARTMENT	9
DESOTO COUNTY EMERGENCY SERVICES	4
DESOTO COUNTY SHERIFF'S DEPARTMENT	1
DESOTO VOLUNTEER FIRE DEPARTMENT/CLARKE COUNTY	1
DIAMONDHEAD FIRE DEPARTMENT	36



2017 PARTICIPATION REPORT BY ORGANIZATION (Cont.)

Organization Name	Student Count
DISTRICT 3 VOLUNTEER FIRE DEPARTMENT LOWNDES COUNTY	26
DIXIE VOLUNTEER FIRE DEPARTMENT	7
DIXON VOLUNTEER FIRE DEPARTMENT	2
DODGE CITY KANSAS FIRE DEPARTMENT	4
DORSEY/FRIENDSHIP FIRE DEPARTMENT	23
DOTHAN REGIONAL AIRPORT FIRE DEPARTMENT	7
DREW VOLUNTEER FIRE DEPARTMENT	9
DRY CREEK VOLUNTEER FIRE DEPARTMENT	25
DUCK HILL VOLUNTEER FIRE DEPARTMENT	2
DUMAS VOLUNTEER FIRE DEPARTMENT	3
DURANT VOLUNTEER FIRE DEPARTMENT	2
E. CENTRAL/E. FORK FIRE DEPARTMENT	3
E. COVINGTON VOLUNTEER FIRE DEPARTMENT	1
E. FRANKLIN RURAL FIRE DEPARTMENT	5
E. LINCOLN VOLUNTEER FIRE DEPARTMENT	3
E. NESHOPA VOLUNTEER FIRE DEPARTMENT	13
E. OKTIBBEHA COUNTY FIRE DEPARTMENT	51
E. UNION VOLUNTEER FIRE DEPARTMENT	2
E. WINSTON COUNTY VOLUNTEER FIRE DEPARTMENT	5
EAGLE LAKE VOLUNTEER FIRE DEPARTMENT	10
EAST MS STATE HOSPITAL	2
EASTPORT/MILL CREEK FIRE DEPARTMENT	1
ECRU VOLUNTEER FIRE DEPARTMENT	11
EDEN VOLUNTEER FIRE DEPARTMENT	1
EDINBURG VOLUNTEER FIRE DEPARTMENT	2
ELLIOTT VOLUNTEER FIRE DEPARTMENT	6
ELLISVILLE FIRE DEPARTMENT	15
EMERGENCY EQUIPMENT PROFESSIONALS	3
ENGLAND AIRPARK FIRE DEPARTMENT	1
ENON VOLUNTEER FIRE DEPARTMENT	26
ERCON REFINING, INC.	20
ERCON, INC.	1
ESCATAWPA VOLUNTEER FIRE DEPARTMENT	5
ETHEL VOLUNTEER FIRE DEPARTMENT	3
EUCUTTA VOLUNTEER FIRE DEPARTMENT/WAYNE COUNTY	1
EUDORA VOLUNTEER FIRE DEPARTMENT	4
EVERGREEN-CAROLINA VOLUNTEER FIRE DEPARTMENT	6
EXXON-BATON ROUGE REFINERY	42
EXXONMOBIL-BTEC	8
FAIRHAVEN VOLUNTEER FIRE DEPARTMENT	20
FALKNER VOLUNTEER FIRE DEPARTMENT	8
FARMHAVEN VOLUNTEER FIRE DEPARTMENT	9
FARMINGTON VOLUNTEER FIRE DEPARTMENT	23



2017 PARTICIPATION REPORT BY ORGANIZATION (Cont.)

Organization Name	Student Count
FAYETTE VOLUNTEER FIRE DEPARTMENT	7
FEDERAL CORRECTIONAL INSTITUTE	1
FERNWOOD VOLUNTEER FIRE DEPARTMENT	18
FIRST CHEMICAL CORPORATION	49
FISHER FERRY VOLUNTEER FIRE DEPARTMENT	57
FLORA FIRE DEPARTMENT	1
FLOWOOD FIRE DEPARTMENT	151
FLOWOOD POLICE DEPARTMENT	5
FOREST FIRE DEPARTMENT	2
FORREST COUNTY EMERGENCY MANAGEMENT	2
FORT POLK FIRE & EMERGENCY SERVICE	1
FORTS LAKE/FRANKLIN CREEK VOLUNTEER FIRE DEPARTMENT	39
FOSTER MOUND VOLUNTEER FIRE DEPARTMENT	11
FOXWORTH VOLUNTEER FIRE DEPARTMENT	5
FRANKLIN COUNTY DISTRICT 5 VOLUNTEER FIRE DEPARTMENT	21
FRIARS POINT VOLUNTEER FIRE DEPARTMENT	1
FRIENDSHIP VOLUNTEER FIRE DEPARTMENT	10
FULTON FIRE DEPARTMENT	105
FURRS VOLUNTEER FIRE DEPARTMENT	2
GAUTIER FIRE DEPARTMENT	42
GEESLIN CORNER VOLUNTEER FIRE DEPARTMENT	17
GEORGE COUNTY CORRECTIONAL FACILITY	16
GEORGE COUNTY EMERGENCY MANAGEMENT	2
GEORGE COUNTY FIRE COORDINATOR	1
GEORGE COUNTY SHERIFF'S DEPARTMENT	1
GIBBSTOWN/LAWRENCE VOLUNTEER FIRE DEPARTMENT	6
GILLSBURG VOLUNTEER FIRE DEPARTMENT	1
GLADE VOLUNTEER FIRE DEPARTMENT	10
GLEN VOLUNTEER FIRE DEPARTMENT	14
GLOSTER FIRE DEPARTMENT/AMITE COUNTY	2
GLOSTER VOLUNTEER FIRE DEPARTMENT/AMITE COUNTY	2
GLUCKSTADT FIRE PROTECTION DISTRICT	27
GOLDEN VOLUNTEER FIRE DEPARTMENT	16
GORE SPRINGS VOLUNTEER FIRE DEPARTMENT	16
GRANBY VOLUNTEER FIRE DEPARTMENT	6
GRAND GULF NUCLEAR STATION	73
GREENFIELD VOLUNTEER FIRE DEPARTMENT	3
GREENLEAF VOLUNTEER FIRE DEPARTMENT	22
GREENVILLE FIRE DEPARTMENT	193
GREENVILLE MID-DELTA AIRPORT	7
GREENWOOD FIRE DEPARTMENT	76
GRENADA COUNTY SHERIFF'S DEPARTMENT	1
GRENADA FIRE DEPARTMENT	50



2017 PARTICIPATION REPORT BY ORGANIZATION (Cont.)

Organization Name	Student Count
GULF PARK ESTATES/ST. ANDREWS FIRE DISTRICT	25
GULFPORT FIRE DEPARTMENT	472
GUNNISON FIRE DEPARTMENT/BOLIVAR COUNTY DISTRICT 4	3
HAMILTON VOLUNTEER FIRE DEPARTMENT/MONROE COUNTY	2
HANCOCK COUNTY EMERGENCY MANAGEMENT	2
HARMONY VOLUNTEER FIRE DEPARTMENT	1
HARMONY/CENTRAL VOLUNTEER FIRE DEPARTMENT	1
HARRISBURG INTERNATIONAL AIRPORT FIRE DEPARTMENT	1
HARRISON COUNTY FIRE SERVICE	73
HARRISON COUNTY SHERIFF'S DEPARTMENT	2
HATLEY VOLUNTEER FIRE DEPARTMENT	12
HATTIESBURG FIRE DEPARTMENT	264
HATTIESBURG/LAUREL REGIONAL AIRPORT AUTHORITY	4
HAZLEHURST FIRE DEPARTMENT	2
HAZLEHURST VOLUNTEER FIRE DEPARTMENT	1
HEBRON VOLUNTEER FIRE DEPARTMENT	5
HEIDELBERG VOLUNTEER FIRE DEPARTMENT	4
HENLEYFIELD VOLUNTEER FIRE DEPARTMENT	1
HERNANDO FIRE DEPARTMENT	18
HEUCKS RETREAT VOLUNTEER FIRE DEPARTMENT	33
HEUCKS RETREAT VOLUNTEER FIRE DEPARTMENT SECRETARY	6
HICKORY FLAT VOLUNTEER FIRE DEPARTMENT	6
HICKORY GROVE VOLUNTEER FIRE DEPARTMENT/LAMAR COUNTY	1
HICKORY VOLUNTEER FIRE DEPARTMENT/NEWTON COUNTY	21
HIGH POINT VOLUNTEER FIRE DEPARTMENT	9
HINDS COUNTY EMERGENCY MANAGEMENT	21
HINTONVILLE VOLUNTEER FIRE DEPARTMENT	1
HOBO-BIG V VOLUNTEER FIRE DEPARTMENT	18
HOG CHAIN VOLUNTEER FIRE DEPARTMENT	1
HOLCOMB VOLUNTEER FIRE DEPARTMENT	4
HOLLANDALE VOLUNTEER FIRE DEPARTMENT	4
HOLLY SPRINGS FIRE DEPARTMENT	81
HOLTSPUR VOLUNTEER FIRE DEPARTMENT	1
HOPE VOLUNTEER FIRE DEPARTMENT	3
HOPEWELL VOLUNTEER FIRE DEPARTMENT/COPIAH COUNTY	9
HORN LAKE FIRE DEPARTMENT	28
HOT COFFEE VOLUNTEER FIRE DEPARTMENT	7
HOULKA VOLUNTEER FIRE DEPARTMENT	8
HOUSE VOLUNTEER FIRE DEPARTMENT	13
HOUSTON FIRE DEPARTMENT	17
HOUSTON COMM/DISTRICT 2 FIRE DEPARTMENT	6
HUNTINGTON INGALLS INC	4
HWY 84 WEST VOLUNTEER FIRE DEPARTMENT	3



2017 PARTICIPATION REPORT BY ORGANIZATION (Cont.)

Organization Name	Student Count
INDEPENDENCE VOLUNTEER FIRE DEPARTMENT	11
INDIAN MOUND VOLUNTEER FIRE DEPARTMENT	2
INDIANOLA FIRE DEPARTMENT	55
INDIANOLA VOLUNTEER FIRE DEPARTMENT	18
INGOMAR VOLUNTEER FIRE DEPARTMENT	18
INTERNATIONAL PAPER COMPANY-VICKSBURG MILL	21
INVERNESS VOLUNTEER FIRE DEPARTMENT	5
ITAWAMBA COUNTY SHERIFF'S DEPARTMENT	2
ITTA BENA VOLUNTEER FIRE DEPARTMENT	13
IUKA FIRE DEPARTMENT	2
JACINTO VOLUNTEER FIRE DEPARTMENT	4
JACKSON COUNTY EMA	1
JACKSON COUNTY FIRE COORDINATOR	10
JACKSON COUNTY FIRE DISTRICT	139
JACKSON COUNTY SHERIFF'S DEPARTMENT	3
JACKSON FIRE DEPARTMENT	58
JACKSON STATE UNIVERSITY	1
JANICE VOLUNTEER FIRE DEPARTMENT	4
JASPER COUNTY SHERIFF'S DEPARTMENT	3
JEFF DAVIS COUNTY SHERIFF'S DEPARTMENT	1
JEFFERSON COUNTY FIRE COORDINATOR	10
JOHNSON VOLUNTEER FIRE DEPARTMENT	1
JOPLIN REGIONAL AIRPORT	1
KEARNEY PARK VOLUNTEER FIRE DEPARTMENT	10
KEMPER COUNTY FIRE COORDINATOR	2
KEMPER SPRINGS VOLUNTEER FIRE DEPARTMENT	2
KILMICHAEL VOLUNTEER FIRE DEPARTMENT	1
KINGSTON VOLUNTEER FIRE DEPARTMENT	15
KOSCIUSKO FIRE DEPARTMENT	4
KOSSUTH VOLUNTEER FIRE DEPARTMENT	25
LAFAYETTE COUNTY FIRE DEPARTMENT	132
LAFAYETTE COUNTY FIRE TRAINING OFFICER	1
LAFAYETTE COUNTY SHERIFF'S DEPARTMENT	1
LAKE EDDINS VOLUNTEER FIRE DEPARTMENT	5
LAKE HARBOR VOLUNTEER FIRE DEPARTMENT	32
LAKE MONTROSE VOLUNTEER FIRE DEPARTMENT	7
LAKE VOLUNTEER FIRE DEPARTMENT/SCOTT COUNTY	6
LAMAR COUNTY EMA	1
LAMAR COUNTY FIRE SERVICES	14
LAMBERT VOLUNTEER FIRE DEPARTMENT	14
LANGFORD VOLUNTEER FIRE DEPARTMENT	38
LAUDERDALE COUNTY EMERGENCY MANAGEMENT	9
LAUDERDALE COUNTY FIRE SERVICES	25



2017 PARTICIPATION REPORT BY ORGANIZATION (Cont.)

Organization Name	Student Count
LAUDERDALE COUNTY SHERIFF'S DEPARTMENT	2
LAUDERDALE VOLUNTEER FIRE DEPARTMENT	8
LAUREL FIRE DEPARTMENT	111
LAWRENCE COUNTY FIRE SERVICES	59
LAWRENCE COUNTY SHERIFF'S OFFICE	1
LEAKE COUNTY EMA	3
LEAKE COUNTY FIRE COORDINATOR	1
LEARNED VOLUNTEER FIRE DEPARTMENT	3
LEE COUNTY CIVIL DEFENSE	2
LEE COUNTY FIRE COORDINATOR	1
LEE COUNTY SHERIFF'S DEPARTMENT	1
LEESBURG VOLUNTEER FIRE DEPARTMENT	16
LEFLORE COUNTY SHERIFF'S DEPARTMENT	1
LENA VOLUNTEER FIRE DEPARTMENT	10
LETOURNEAU COMMUNITY FIRE DEPARTMENT	5
LEWISBURG VOLUNTEER FIRE DEPARTMENT	6
LEXIE VOLUNTEER FIRE DEPARTMENT	8
LIBERTY ROAD VOLUNTEER FIRE DEPARTMENT/ADAMS COUNTY	20
LIBERTY RURAL VOLUNTEER FIRE DEPARTMENT/AMITE COUNTY	1
LIBERTY VOLUNTEER FIRE DEPARTMENT/AMITE COUNTY	6
LINCOLN COUNTY SHERIFF'S DEPARTMENT	1
LINWOOD VOLUNTEER FIRE DEPARTMENT	5
LIZANA VOLUNTEER FIRE DEPARTMENT	8
LOBUTCHA VOLUNTEER FIRE DEPARTMENT	5
LONE STAR VOLUNTEER FIRE DEPARTMENT	2
LONG BEACH FIRE DEPARTMENT	35
LONGINO CENTRAL VOLUNTEER FIRE DEPARTMENT	17
LONGVIEW VOLUNTEER FIRE DEPARTMENT	7
LOOXAHOMA VOLUNTEER FIRE DEPARTMENT	5
LORMAN VOLUNTEER FIRE DEPARTMENT	3
LOST GAP VOLUNTEER FIRE DEPARTMENT	2
LOUIN VOLUNTEER FIRE DEPARTMENT	6
LOUISVILLE FIRE DEPARTMENT	44
LOVE VOLUNTEER FIRE DEPARTMENT	13
LOWNDES COUNTY DISTRICT 5/ARTESIA FIRE DEPARTMENT	9
LOWNDES COUNTY FIRE SERVICE	5
LSR VOLUNTEER FIRE DEPARTMENT/SUNFLOWER COUNTY	17
LUCEDALE POLICE DEPARTMENT	2
LUDLOW VOLUNTEER FIRE DEPARTMENT	2
LUMBERTON VOLUNTEER FIRE DEPARTMENT	18
MABEN VOLUNTEER FIRE DEPARTMENT	9
MACEDONIA VOLUNTEER FIRE DEPARTMENT	19
MACLEAN VOLUNTEER FIRE DEPARTMENT	3



2017 PARTICIPATION REPORT BY ORGANIZATION (Cont.)

Organization Name	Student Count
MACON VOLUNTEER FIRE DEPARTMENT	28
MADDEN VOLUNTEER FIRE DEPARTMENT	6
MADISON COUNTY EMA	8
MADISON FIRE DEPARTMENT	74
MAGEE FIRE DEPARTMENT	14
MAGNOLIA VOLUNTEER FIRE DEPARTMENT/PIKE COUNTY	4
MAGNOLIA VOLUNTEER FIRE DEPARTMENT/STONE COUNTY	7
MANTACHIE FIRE DEPARTMENT	29
MARION COUNTY SHERIFF'S DEPARTMENT	1
MARION VOLUNTEER FIRE & RESCUE	1
MARKS VOLUNTEER FIRE DEPARTMENT	45
MARS HILL VOLUNTEER FIRE DEPARTMENT/AMITE COUNTY	2
MARSHALL COUNTY E-911	4
MARSHALL COUNTY FIRE COORDINATOR	14
MARSHALL COUNTY SHERIFF'S DEPARTMENT	1
MARTIN VOLUNTEER FIRE DEPARTMENT	9
MARYDELL/BARNES VOLUNTEER FIRE DEPARTMENT	7
MASHULAVILLE VOLUNTEER FIRE DEPARTMENT	2
MCCOMB FIRE DEPARTMENT	92
MCCOMB POLICE DEPARTMENT	2
MCHENRY VOLUNTEER FIRE DEPARTMENT	33
MCLAURIN VOLUNTEER FIRE DEPARTMENT	8
MEADVILLE VOLUNTEER FIRE DEPARTMENT	11
MEEHAN VOLUNTEER FIRE DEPARTMENT	13
MEMA	3
MEMPHIS, TN FIRE DEPARTMENT	72
MENDENHALL VOLUNTEER FIRE DEPARTMENT	6
MERIDIAN FIRE DEPARTMENT	202
MERIDIAN POLICE DEPARTMENT	4
METCALFE VOLUNTEER FIRE DEPARTMENT	8
MITCHELL VOLUNTEER FIRE DEPARTMENT	10
MIZE VOLUNTEER FIRE DEPARTMENT	2
MOBILE FIRE DEPARTMENT	24
MONAGHAN TOWNSHIP VOLUNTEER FIRE DEPARTMENT	1
MONEY VOLUNTEER FIRE DEPARTMENT	18
MONROE COUNTY FIRE COORDINATOR	1
MONROE FIRE DEPARTMENT	20
MONTEREY VOLUNTEER FIRE DEPARTMENT	13
MONTGOMERY COUNTY SHERIFF'S DEPARTMENT	2
MONTICELLO FIRE DEPARTMENT	28
MONTPELIER VOLUNTEER FIRE DEPARTMENT	2
MONTROSE VOLUNTEER FIRE DEPARTMENT	1
MOOREVILLE EGGVILLE VOLUNTEER FIRE DEPARTMENT	3



2017 PARTICIPATION REPORT BY ORGANIZATION (Cont.)

Organization Name	Student Count
MOOREVILLE VOLUNTEER FIRE DEPARTMENT	12
MOORHEAD VOLUNTEER FIRE DEPARTMENT	9
MORGAN CITY VOLUNTEER FIRE DEPARTMENT	6
MOSELLE VOLUNTEER FIRE DEPARTMENT	5
MOSS POINT FIRE DEPARTMENT	30
MOUND BAYOU VOLUNTEER FIRE DEPARTMENT	26
MS AIR GUARD/MERIDIAN/186th REFUELING GROUP	39
MS AIR NATIONAL GUARD CRTS FIRE DEPARTMENT	1
MS ANG/AIRPORT FIRE DEPARTMENT 172ND CES	7
MS DEPARTMENT OF EDUCATION	2
MS DEPARTMENT OF ENVIRONMENTAL QUALITY	181
MS DEPARTMENT OF HEALTH	5
MS DEPARTMENT OF TRANSPORTATION	1
MS DEPARTMENT OF WILDLIFE	2
MS GULF COAST COMMUNITY COLLEGE-GAUTIER	4
MS GULF COAST COMMUNITY COLLEGE-JEFF DAVIS	6
MS GULF COAST COMMUNITY COLLEGE-PERKINSTON	1
MS STATE CAPITOL POLICE DEPARTMENT	2
MS STATE HOSPITAL FIRE DEPARTMENT	1
MS STATE UNIVERSITY	1
MT. NEBO FIRE DEPARTMENT/KEMPER COUNTY DISTRICT 5	6
MT. OLIVET VOLUNTEER FIRE DEPARTMENT	6
MT. SALEM VOLUNTEER FIRE DEPARTMENT	2
MURPHREESBORO VOLUNTEER FIRE DEPARTMENT	1
MYRICK & MILL CREEK FIRE DEPARTMENT	6
MYRTLE VOLUNTEER FIRE DEPARTMENT	2
N. CENTRAL SCOTT COUNTY/MIDWAY VOLUNTEER FIRE DEPARTMENT	6
N. BENTON COUNTY VOLUNTEER FIRE DEPARTMENT	9
N. CROSSROADS VOLUNTEER FIRE DEPARTMENT	1
N. FORREST COUNTY VOLUNTEER FIRE DEPARTMENT	25
N. WOOLMARKET VOLUNTEER FIRE DEPARTMENT	4
N. E. BENTON VOLUNTEER FIRE DEPARTMENT	4
N. E. CLAY COUNTY/#100 VOLUNTEER FIRE DEPARTMENT	6
N. E. ITAWAMBA/FAIRVIEW FIRE DEPARTMENT	12
N. E. LAMAR VOLUNTEER FIRE DEPARTMENT	12
N. E. UNION FIRE DEPARTMENT	17
N. E. WARREN COUNTY VOLUNTEER FIRE DEPARTMENT	30
N. W. COVINGTON VOLUNTEER FIRE DEPARTMENT	1
N. W. LOWNDES/DISTRICT 2 FIRE DEPARTMENT	4
NANIH WAIYA VOLUNTEER FIRE DEPARTMENT	5
NATCHEZ FIRE DEPARTMENT	54
NATCHEZ-ADAMS COUNTY AIRPORT	4
NESBIT VOLUNTEER FIRE DEPARTMENT	8



2017 PARTICIPATION REPORT BY ORGANIZATION (Cont.)

Organization Name	Student Count
NESHOBA COUNTY EMA	2
NESHOBA COUNTY SHERIFF'S DEPARTMENT	1
NETTLETON VOLUNTEER FIRE DEPARTMENT	5
NEW ALBANY FIRE DEPARTMENT	98
NEW AUGUSTA VOLUNTEER FIRE DEPARTMENT	1
NEW HEBRON VOLUNTEER FIRE/RESCUE	9
NEW HOPE VOLUNTEER FIRE DEPARTMENT/KEMPER COUNTY	7
NEW ORLEANS FIRE DEPARTMENT	1
NEW SITE VOLUNTEER FIRE DEPARTMENT/LINCOLN COUNTY	2
NEW SITE VOLUNTEER FIRE DEPARTMENT/PRENTISS COUNTY	38
NEW ZION VOLUNTEER FIRE DEPARTMENT	7
NEWTON COUNTY 911	1
NEWTON COUNTY EMERGENCY MANAGEMENT	1
NEWTON FIRE DEPARTMENT	9
NON-FLOOD PROTECTION ASSET MANAGEMENT AUTHORITY	5
NORTH BEND VOLUNTEER FIRE DEPARTMENT	2
NORTH HAVEN VOLUNTEER FIRE DEPARTMENT	9
NORTH MS MEDICAL CENTER	2
NORTH OKALOOSA FIRE DISTRICT	1
NORTH TUNICA COUNTY FIRE PROTECTION DISTRICT	6
NORTHEAST FIRE DEPARTMENT JACKSON COUNTY	18
NORTHWEST ARKANSAS REGIONAL AIRPORT	1
NORTHWEST JACKSON COUNTY VOLUNTEER FIRE DEPARTMENT	24
NOXAPATER VOLUNTEER FIRE DEPARTMENT	3
NOXUBEE COUNTY FIRE COORDINATOR	1
O'NEIL VOLUNTEER FIRE DEPARTMENT	12
O'TUCKOLOFA VOLUNTEER FIRE DEPARTMENT	5
OAK BOWERY VOLUNTEER FIRE DEPARTMENT	2
OAK GROVE VOLUNTEER FIRE DEPARTMENT/WALTHALL COUNTY	6
OAK GROVE/BEAT 4 LAMAR COUNTY FIRE DEPARTMENT	6
OAKVALE VOLUNTEER FIRE DEPARTMENT	16
OCEAN SPRINGS FIRE DEPARTMENT	77
OKOLONA FIRE DEPARTMENT	11
OKTIBBEHA COUNTY DISTRICT 5 FIRE DEPARTMENT	37
OKTIBBEHA COUNTY EMERGENCY MANAGEMENT	1
OKTIBBEHA COUNTY SHERIFF'S DEPARTMENT	2
OLIVE BRANCH FIRE DEPARTMENT	71
OSYKA VOLUNTEER FIRE DEPARTMENT	1
OVETT VOLUNTEER FIRE DEPARTMENT	5
OXFORD FIRE DEPARTMENT	162
PADEN VOLUNTEER FIRE DEPARTMENT	20
PADUCAH WELLS VOLUNTEER FIRE DEPARTMENT	1
PANOLA COUNTY CIVIL DEFENSE	7



2017 PARTICIPATION REPORT BY ORGANIZATION (Cont.)

Organization Name	Student Count
PANOLA COUNTY FIRE COORDINATOR	2
PASCAGOULA FIRE DEPARTMENT	57
PASS CHRISTIAN FIRE DEPARTMENT	139
PASS CHRISTIAN POLICE DEPARTMENT	1
PAULDING VOLUNTEER FIRE DEPARTMENT	2
PAYNES VOLUNTEER FIRE DEPARTMENT	1
PEARL FIRE DEPARTMENT	195
PEARL POLICE DEPARTMENT	2
PEARL RIVER COUNTY EMERGENCY MANAGEMENT	1
PELAHATCHIE VOLUNTEER FIRE DEPARTMENT	64
PERRY COUNTY FIRE COORDINATOR	1
PETAL FIRE DEPARTMENT	11
PHEBA VOLUNTEER FIRE DEPARTMENT/CLAY COUNTY #500	7
PHILADELPHIA FIRE DEPARTMENT	18
PHILIPP VOLUNTEER FIRE DEPARTMENT	12
PICAYUNE FIRE DEPARTMENT	81
PIKE COUNTY SHERIFF'S DEPARTMENT	1
PINE BURR VOLUNTEER FIRE DEPARTMENT	13
PINE GROVE VOLUNTEER FIRE DEPARTMENT	7
PINE RIDGE VOLUNTEER FIRE DEPARTMENT	2
PINE VALLEY VOLUNTEER FIRE DEPARTMENT	2
PINEDALE VOLUNTEER FIRE DEPARTMENT	4
PINEVILLE VOLUNTEER FIRE DEPARTMENT	10
PISGAH COMMUNITY FIRE DEPARTMENT	13
PITTSBORO VOLUNTEER FIRE DEPARTMENT	7
PLANTERSVILLE VOLUNTEER FIRE DEPARTMENT	14
PLEASANT GROVE VOLUNTEER FIRE DEPARTMENT/PANOLA COUNTY	3
POAGVILLE VOLUNTEER FIRE DEPARTMENT	8
POCAHONTAS VOLUNTEER FIRE DEPARTMENT	10
POLKVILLE VOLUNTEER FIRE DEPARTMENT	7
PONTOTOC COUNTY EMA	1
PONTOTOC FIRE DEPARTMENT	3
POPE VOLUNTEER FIRE DEPARTMENT	10
POPLAR CREEK VOLUNTEER FIRE DEPARTMENT	3
POPLARVILLE FIRE DEPARTMENT	17
PORTERVILLE VOLUNTEER FIRE DEPARTMENT	14
POTTS CAMP VOLUNTEER FIRE DEPARTMENT	36
POWERS VOLUNTEER FIRE DEPARTMENT	1
PRAIRIE POINT FIRE DEPARTMENT/NOXUBEE COUNTY DIST 1	10
PRENTISS COUNTY FIRE COORDINATOR	2
PRENTISS POLICE DEPARTMENT	1
PRENTISS VOLUNTEER FIRE DEPARTMENT	14
PRESTON FIRE DEPARTMENT/KEMPER COUNTY DISTRICT 4	3



2017 PARTICIPATION REPORT BY ORGANIZATION (Cont.)

Organization Name	Student Count
PROGRESS VOLUNTEER FIRE DEPARTMENT/PIKE COUNTY	14
PROGRESS VOLUNTEER FIRE DEPARTMENT/WAYNE COUNTY	2
PRO-TECH FIRE SERVICES LTD	9
PUCKETT VOLUNTEER FIRE DEPARTMENT	17
PURVIS VOLUNTEER FIRE DEPARTMENT	9
QUITMAN COUNTY SHERIFF'S DEPARTMENT	1
QUITMAN VOLUNTEER FIRE DEPARTMENT	1
RALEIGH VOLUNTEER FIRE DEPARTMENT	5
RANDOLPH VOLUNTEER FIRE DEPARTMENT	4
RANKIN COUNTY EOC	13
RANKIN COUNTY SHERIFF'S DEPARTMENT	5
RAWLS SPRINGS VOLUNTEER FIRE DEPARTMENT	19
RAYMOND VOLUNTEER FIRE DEPARTMENT	5
RED BANKS FIRE DEPARTMENT	27
RED HILL VOLUNTEER FIRE DEPARTMENT	16
REDLICK VOLUNTEER FIRE DEPARTMENT	4
REFIDOMSA	10
RESERVOIR FIRE DEPARTMENT STATION 1	1
RESERVOIR FIRE PROTECTION DISTRICT	34
RHODES CHAPEL VOLUNTEER FIRE DEPARTMENT	4
RICHLAND FIRE DEPARTMENT	131
RICHLAND, CITY OF (WATER, PARKS, BLDG)	1
RICHMOND VOLUNTEER FIRE DEPARTMENT	1
RICHTON VOLUNTEER FIRE DEPARTMENT	7
RIDGELAND FIRE DEPARTMENT	70
RIDGELAND POLICE DEPARTMENT	1
RIENZI VOLUNTEER FIRE DEPARTMENT	3
RIPLEY VOLUNTEER FIRE DEPARTMENT	1
RIVERSIDE VOLUNTEER FIRE DISTRICT	23
ROBINHOOD VOLUNTEER FIRE DEPARTMENT	15
ROCK HILL VOLUNTEER FIRE DEPARTMENT	1
ROCKY CREEK VOLUNTEER FIRE DEPARTMENT	24
ROLLING FORK VOLUNTEER FIRE DEPARTMENT	24
ROSEDALE VOLUNTEER FIRE DEPARTMENT	2
ROXIE VOLUNTEER FIRE DEPARTMENT	6
RULEVILLE VOLUNTEER FIRE DEPARTMENT	13
RUNNELSTOWN VOLUNTEER FIRE DEPARTMENT	3
RURAL HILL VOLUNTEER FIRE DEPARTMENT	2
RURAL METRO CORPORATION FIRE DEPARTMENT	1
RURAL METRO FIRE DEPARTMENT/FED EX	14
RUSTIN VOLUNTEER FIRE DEPARTMENT	2
S. E. CHICKASAW FIRE DEPARTMENT	3
S. E. CLAY COUNTY/#700 FIRE DEPARTMENT	3



2017 PARTICIPATION REPORT BY ORGANIZATION (Cont.)

Organization Name	Student Count
S. E. COVINGTON VOLUNTEER FIRE DEPARTMENT	5
S. E. LAMAR VOLUNTEER FIRE DEPARTMENT	1
S. E. UNION FIRE DEPARTMENT	13
S. JONES VOLUNTEER FIRE DEPARTMENT	9
S. LAUDERDALE VOLUNTEER FIRE DEPARTMENT	4
S. MARION VOLUNTEER FIRE DEPARTMENT	13
S. W. ALCORN VOLUNTEER FIRE DEPARTMENT	7
S. W. AMITE VOLUNTEER FIRE DEPARTMENT	1
S. W. JONES VOLUNTEER FIRE DEPARTMENT	8
S. W. LAMAR VOLUNTEER FIRE DEPARTMENT	8
S. W. MADISON FIRE DEPARTMENT	8
SALEM VOLUNTEER FIRE DEPARTMENT	1
SALLIS FIRE DEPARTMENT/ATTALA COUNTY BEAT 4	1
SALTILLO FIRE DEPARTMENT	18
SANDERSVILLE VOLUNTEER FIRE DEPARTMENT	5
SARDIS LOWER LAKE FIRE DEPARTMENT	6
SARDIS VOLUNTEER FIRE DEPARTMENT	18
SCHLATER VOLUNTEER FIRE DEPARTMENT	4
SCOوبا VOLUNTEER FIRE DEPARTMENT	4
SCOTT COUNTY SHERIFF'S DEPARTMENT	1
SEBASTOPOL VOLUNTEER FIRE DEPARTMENT	5
SEMINARY VOLUNTEER FIRE DEPARTMENT	8
SENATOBIA FIRE DEPARTMENT	13
SHADY GROVE VOLUNTEER FIRE DEPARTMENT	15
SHANNON VOLUNTEER FIRE DEPARTMENT	13
SHARKEY HAMPTON VOLUNTEER FIRE DEPARTMENT	1
SHARON VOLUNTEER FIRE DEPARTMENT	6
SHELL ROAD VOLUNTEER FIRE DEPARTMENT	9
SHERMAN VOLUNTEER FIRE DEPARTMENT	3
SHILOH VOLUNTEER FIRE DEPARTMENT	10
SHIPMAN VOLUNTEER FIRE DEPARTMENT	5
SHUQUALAK VOLUNTEER FIRE DEPARTMENT	5
SIDON VOLUNTEER FIRE DEPARTMENT	1
SILVER CREEK VOLUNTEER FIRE DEPARTMENT	2
SILVER RUN VOLUNTEER FIRE DEPARTMENT	7
SIMPSON COUNTY SHERIFF'S DEPARTMENT	2
SIMPSON VOLUNTEER FIRE DEPARTMENT	1
SKUNA VALLEY VOLUNTEER FIRE DEPARTMENT	2
SLAYDEN-MT. PLEASANT FIRE DEPARTMENT	14
SLEDGE VOLUNTEER FIRE DEPARTMENT	2
SMITH COUNTY EMA	1
SMITHDALE VOLUNTEER FIRE DEPARTMENT	1
SMYRNA VOLUNTEER FIRE DEPARTMENT	2



2017 PARTICIPATION REPORT BY ORGANIZATION (Cont.)

Organization Name	Student Count
SNOW LAKE VOLUNTEER FIRE DEPARTMENT	6
SNOWDOWN/PLEASANT HILL VOLUNTEER FIRE DEPARTMENT	5
SONTAG VOLUNTEER FIRE DEPARTMENT	6
SOSO VOLUNTEER FIRE DEPARTMENT	4
SOUTHAVEN FIRE DEPARTMENT	149
SOUTHEAST FIRE & RESCUE/STATION 1	11
SOUTHWEST MARION VOLUNTEER FIRE DEPARTMENT	19
SPLUNGE VOLUNTEER FIRE DEPARTMENT	5
SPOUT SPRINGS VOLUNTEER FIRE DEPARTMENT	1
SPRING HILL VOLUNTEER FIRE DEPARTMENT/KEMPER COUNTY	8
SPRINGHILL VOLUNTEER FIRE DEPARTMENT/TALLAHATCHIE CO.	10
ST. CROIX, VIRGIN ISLANDS PORT AUTHORITY	1
ST. TAMMANY FIRE DISTRICT #1	2
ST. TAMMANY FIRE DISTRICT #4	4
STALLO VOLUNTEER FIRE DEPARTMENT	2
STAMPLEY VOLUNTEER FIRE DEPARTMENT	12
STAR VOLUNTEER FIRE DEPARTMENT	11
STARKVILLE FIRE DEPARTMENT	142
STATE FIRE ACADEMY	59
STATE FIRE MARSHAL'S OFFICE	33
STENNIS SPACE CENTER/JOHNSON CONTROLS	2
STONEWALL VOLUNTEER FIRE DEPARTMENT	1
STREET VOLUNTEER FIRE DEPARTMENT	3
STRINGER VOLUNTEER FIRE DEPARTMENT	5
STRONG HOPE VOLUNTEER FIRE DEPARTMENT	10
STUDENT/NOT WITH CODED DEPARTMENT	2
STURGIS/DIST. 4 VOLUNTEER FIRE DEPARTMENT	8
SUMMIT VOLUNTEER FIRE DEPARTMENT/PIKE COUNTY	82
SUMRALL VOLUNTEER FIRE DEPARTMENT	3
SUNFLOWER COUNTY FIR COORDINATOR	1
SUNFLOWER VOLUNTEER FIRE DEPARTMENT	9
SUNNYHILL VOLUNTEER FIRE DEPARTMENT	34
SUNRISE VOLUNTEER FIRE DEPARTMENT	20
SUQUALENA VOLUNTEER FIRE DEPARTMENT	9
SYLVA RENA VOLUNTEER FIRE DEPARTMENT/YALOBUSHA COUNTY	5
SYLVARENA VOLUNTEER FIRE DEPARTMENT/SMITH COUNTY	11
TALLAHATCHIE COUNTY FIRE COORDINATOR	2
TAMINCO	56
TASK FORCE 1 - MISSISSIPPI	10
TASK FORCE 2 - MISSISSIPPI	17
TASK FORCE 3 - MISSISSIPPI	14
TATE COUNTY DISTRICT 1 FIRE DEPARTMENT	11
TATE COUNTY FIRE COORDINATOR	2



2017 PARTICIPATION REPORT BY ORGANIZATION (Cont.)

Organization Name	Student Count
TATE COUNTY SHERIFF'S DEPARTMENT	1
TAYLORSVILLE VOLUNTEER FIRE DEPARTMENT	10
TERRY VOLUNTEER FIRE DEPARTMENT	3
THAXTON VOLUNTEER FIRE DEPARTMENT	6
THE CHEMOURS COMPANY	118
THOMASTOWN VOLUNTEER FIRE DEPARTMENT	1
THORN VOLUNTEER FIRE DEPARTMENT	9
THRASHER VOLUNTEER FIRE DEPARTMENT	1
THREE FORKS FIRE DEPARTMENT	53
THREE MILE CORNER VOLUNTEER FIRE DEPARTMENT	4
THREE STAR FIRE & RESCUE	1
TIBBEE VOLUNTEER FIRE DEPARTMENT/CLAY COUNTY #200	10
TIE PLANT VOLUNTEER FIRE DEPARTMENT	29
TILDEN-NEW SALEM FIRE DEPARTMENT	9
TIPPAH COUNTY FIRE COORDINATOR	1
TISHOMINGO COUNTY CIVIL DEFENSE	3
TISHOMINGO COUNTY FIRE COORDINATOR	2
TISHOMINGO COUNTY SHERIFF'S DEPARTMENT	1
TISHOMINGO FIRE DEPARTMENT	1
TOCCOPOLA VOLUNTEER FIRE DEPARTMENT	2
TOOMSUBA VOLUNTEER FIRE DEPARTMENT	15
TOPEKA/DISTRICT 3 VOLUNTEER FIRE DEPARTMENT	7
TREMONT/DISTRICT 4 VOLUNTEER FIRE DEPARTMENT	3
TRI-COMMUNITY VOLUNTEER FIRE DEPARTMENT/MARION CO.	64
TUCKER VOLUNTEER FIRE DEPARTMENT	4
TUNICA COUNTY SHERIFF'S DEPARTMENT	7
TUNICA VOLUNTEER FIRE DEPARTMENT	17
TUPELO AIRPORT AUTHORITY	10
TUPELO FIRE DEPARTMENT	166
TUPELO POLICE DEPARTMENT	1
TUSCUMBIA/NEW CHANDLER VOLUNTEER FIRE DEPARTMENT	5
TUTWILER VOLUNTEER FIRE DEPARTMENT	2
TWIN CREEK VOLUNTEER FIRE DEPARTMENT	6
TYLERTOWN VOLUNTEER FIRE DEPARTMENT	3
UNA VOLUNTEER FIRE DEPARTMENT/CLAY COUNTY #400	3
UNCODED DEPARTMENT OR INDUSTRY	93
UNION CHURCH VOLUNTEER FIRE DEPARTMENT	13
UNION COUNTY SHERIFF'S DEPARTMENT	1
UNION VOLUNTEER FIRE DEPARTMENT/JONES COUNTY	5
UNION VOLUNTEER FIRE DEPARTMENT/LEE COUNTY	7
UNION VOLUNTEER FIRE DEPARTMENT/NEWTON COUNTY	4
UNION VOLUNTEER FIRE DEPARTMENT/PANOLA COUNTY	5
UNION VOLUNTEER FIRE DISTRICT/LEE COUNTY	3



2017 PARTICIPATION REPORT BY ORGANIZATION (Cont.)

Organization Name	Student Count
UNIVERSITY OF MS MEDICAL CENTER	2
UNIVERSITY OF MS POLICE DEPARTMENT	14
UTICA VOLUNTEER FIRE DEPARTMENT	10
VALLEY GROVE VOLUNTEER FIRE DEPARTMENT	3
VALLEY PARK VOLUNTEER FIRE DEPARTMENT (INACTIVE)	1
VALLEY VIEW VOLUNTEER FIRE DEPARTMENT	2
VAN VLEET VOLUNTEER FIRE DEPARTMENT	4
VARDAMAN VOLUNTEER FIRE DEPARTMENT	14
VAUGHN VOLUNTEER FIRE DEPARTMENT	3
VELMA VOLUNTEER FIRE DEPARTMENT	18
VERONA FIRE DEPARTMENT	26
VICKSBURG FIRE DEPARTMENT	75
VICKSBURG-WARREN 911	17
VICTORIA FIRE DEPARTMENT	7
WALLS FIRE DEPARTMENT	40
WALNUT GROVE VOLUNTEER FIRE DEPARTMENT	3
WALNUT VOLUNTEER FIRE DEPARTMENT	9
WALTERS VOLUNTEER FIRE DEPARTMENT	29
WALTHALL COUNTY 4TH DIST VOLUNTEER FIRE DEPARTMENT	20
WALTHALL COUNTY 3RD DISTRICT FIRE DEPARTMENT	4
WARD VOLUNTEER FIRE DEPARTMENT	2
WARREN COUNTY EMERGENCY MANAGEMENT	1
WARREN COUNTY FIRE COORDINATOR	2
WARREN COUNTY FIRE SERVICE	9
WARREN COUNTY SHERIFF'S DEPARTMENT	7
WATER VALLEY FIRE DEPARTMENT	1
WATERFORD VOLUNTEER FIRE DEPARTMENT	2
WATSON VOLUNTEER FIRE DEPARTMENT	21
WAVELAND FIRE DEPARTMENT	10
WAYNE COUNTY CENTRAL FIRE STATION	40
WAYNE COUNTY EMERGENCY MANAGEMENT DISTRICT	3
WAYNE COUNTY GENERAL HOSPITAL	5
WAYNE COUNTY SHERIFF'S DEPARTMENT	2
WAYNESBORO FIRE DEPARTMENT	3
WAYNESBORO POLICE DEPARTMENT	4
WEIR VOLUNTEER FIRE DEPARTMENT	1
WESSON VOLUNTEER FIRE DEPARTMENT	16
WEST COVINGTON VOLUNTEER FIRE DEPARTMENT	1
WEST HINDS VOLUNTEER FIRE DEPARTMENT	4
WEST MEMPHIS AR FIRE DEPARTMENT	1
WEST POINT FIRE DEPARTMENT	26
WEST UNION VOLUNTEER FIRE DEPARTMENT	4
WHEELER FRANKSTOWN VOLUNTEER FIRE DEPARTMENT	21



2017 PARTICIPATION REPORT BY ORGANIZATION (Cont.)

Organization Name	Student Count
WIGGINS FIRE DEPARTMENT	7
WINONA FIRE DEPARTMENT	18
WINSTON CHOCTAW REGIONAL CORRECTIONAL FACILITY	1
WINSTON COUNTY FIRE COORDINATOR	3
WOODLAND VOLUNTEER FIRE DEPARTMENT	19
WREN VOLUNTEER FIRE DEPARTMENT	13
YALOBUSHA COUNTY SHERIFF'S DEPARTMENT	1
YAZOO CITY FIRE DEPARTMENT	170
YAZOO COUNTY DISTRICT 3 VOLUNTEER FIRE DEPARTMENT	5
ZAMA VOLUNTEER FIRE DEPARTMENT	1
ZETUS VOLUNTEER FIRE DEPARTMENT	3



“Making A
Difference
When It Matters
The Most”

