



FLARE FIREPLACES

Burner Air Shutter Adjustment – Service Bulletin

Bulletin 7311002

Frameless – Less Is More

CAUTION: Read and understand this service bulletin thoroughly before starting. Only a trained, experienced service technician should attempt this service procedure.



CSA Approved

**Safety & Quality
First**

**Service
Technician Use**

**Contact Flare
Fireplaces for any
additional support**

FLARE FIREPLACES

2701 Westmoreland Dr
Plano Texas

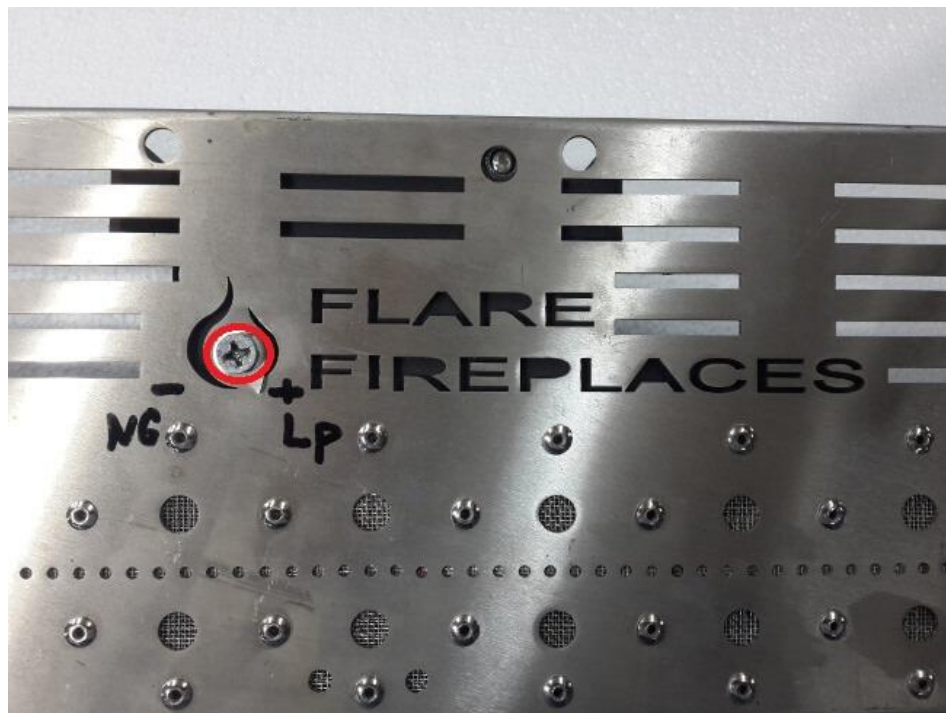
Flarefireplaces.com

Jan 11 2016



Flare Fireplaces – Air Shutter adjustments

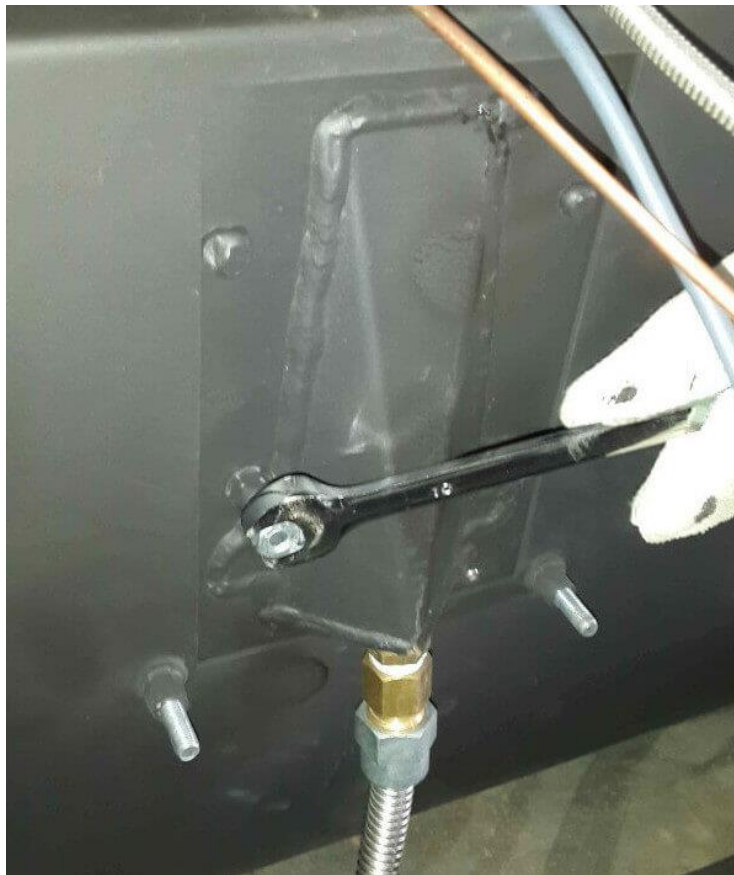
1. Read and understand this service bulletin thoroughly before starting. Only a trained, experienced service technician should attempt this gas appliance burner removal.
2. Read the Flare Fireplace Installation and Service Instruction Manual prior to working on a Flare Fireplace appliance.
3. The air shutter on the burner controls the combustion air to the gas burner and is pre-set closed at the factory for natural gas fuel. Propane requires fully open shutter setting and is pre-set open before shipping out.
Due to variations in heating values and gas pressures, it may be necessary to make adjustment to the burner air shutter to obtain desired flame and to eliminate carbon deposits. Evaluate flame appearance after the fireplace has reached operating temperature.
4. The Flare Fireplaces burner air shutter can be adjusted from outside the fireplace during installation, without removing the fireplace glass from under the unit (assuming access is not restricted due to wall finishing).
5. In case access to the air shutter form under the unit is restricted, the air shutter can be adjusted from inside the firebox using phillips screwdriver. Follow the flare manual for removing the safety screens and glass. There is no need to remove the burner to adjust the air shutter.





6. Take special care when adjusting the flame for LP gas. Closing the air shutter may cause the flame to look very yellow and will create carbon deposits.

Caution! Use a wrench to adjust the air shutter as the bolt may become very hot due to the fireplace operation.



7. When adjusting the shutter, with fireplace on, the flame is expected to burst up and then go down to the adjusted level. That is due to quick pressure change in the burner.
8. See following link for Video example of Air shutter adjustment on a natural gas fireplace:

<http://flarefireplaces.com/support-2/>