



FlashPath™ Floppy Disk  
Adapter for SmartMedia™

## Installation & User Guide



- For: 1. FlashPath v3.x or later for IBM® PC AT compatible PC's running Microsoft® Windows® 98, Microsoft® Windows® 95 or Microsoft® Windows® 2000.
2. FlashPath v3.x for Macintosh® PowerBooks and PowerPCs®.
3. FlashPath v3.x for Microsoft® Windows® NT 4.0/Service Pack 3, 4, 5, 6 (Windows® NT 3.51 is not supported).
- 

## 90 DAY LIMITED WARRANTY

SmartDisk Corporation (the Company) warrants to the original retail purchaser of this Product that should this Product or any part thereof (except the user changeable batteries) under normal use and conditions, be proven defective in material or workmanship within ninety (90) days from the date of purchase, such defects will be repaired or replaced (with new or rebuilt parts) at the Company's option without charge for parts or labor directly related to the defect(s).

To obtain repairs or replacement within the terms of this Warranty, the Product should be delivered with proof of purchase and specification of defect(s), transportation prepaid, to the company from which you purchased this Product.

This Warranty does not apply to batteries, or costs incurred for their removal, reinstallation, testing, or evaluation, nor to any Product or part thereof if its correction, repair or replacement is required because of: (i) natural disasters, including fire, smoke, water, wind, earthquakes or lightning, (ii) electric power failures, (iii) the failure to maintain appropriate environmental conditions, (iv) the neglect, misuse or other than the ordinary use of the Product, or (v) attempted repairs or alterations by persons other than those employed by the Company. This Warranty is not assignable or transferable.

THE EXTENT OF THE COMPANY'S LIABILITY UNDER THIS WARRANTY IS LIMITED TO THE REPAIR OR REPLACEMENT PROVIDED ABOVE. IN THE EVENT REPAIR OR REPLACEMENT OF THE PRODUCT IS NOT FEASIBLE, THE COMPANY MAY, IN ITS SOLE DISCRETION, ELECT TO REFUND, TO THE ORIGINAL PURCHASER, THE PURCHASE PRICE PAID FOR THE PRODUCT. IN NO EVENT SHALL THE COMPANY'S LIABILITY EXCEED THE PURCHASE PRICE PAID BY PURCHASER FOR THE PRODUCT. IN NO CASE SHALL THE COMPANY BE LIABLE FOR ANY DAMAGES, EVEN IF SUCH DAMAGES ARE FORESEEABLE, RESULTING FROM THE USE OF, OR INABILITY TO USE, THIS PRODUCT, INCLUDING, WITHOUT LIMITATION, DAMAGE TO OR LOSS OF DATA.

THE EXPRESS WARRANTY SET FORTH HEREIN IS EXCLUSIVE, AND THE COMPANY DISCLAIMS ANY IMPLIED WARRANTIES, INCLUDING ANY IMPLIED WARRANTY OF MERCHANTABILITY, FITNESS FOR A PARTICULAR PURPOSE, AND NON-INFRINGEMENT. ANY ACTION FOR BREACH OF ANY WARRANTY HEREUNDER INCLUDING IMPLIED WARRANTIES MUST BE BROUGHT WITHIN A PERIOD OF 12 MONTHS FROM DATE OF ORIGINAL PURCHASE. IN NO CASE SHALL THE COMPANY BE LIABLE FOR ANY CONSEQUENTIAL OR INCIDENTAL DAMAGES FOR BREACH OF THIS OR ANY OTHER WARRANTY, EXPRESSED OR IMPLIED, WHATSOEVER. No person or representative is authorized to assume for the Company any liability other than expressed herein in connection with the sale of this Product.

Some states or territories do not allow limitations on how long an implied warranty lasts or the exclusion may not apply to you. This Warranty gives you specific rights, and you may also have other rights which vary from territory to territory.

FlashPath is a trademark of SmartDisk Corporation of the U.S.A. SmartMedia is a trademark of Toshiba Corporation. PC/AT is a registered trademark of International Business Machines Corp. of the U.S.A. Microsoft and Windows are trademarks of Microsoft Corporation and registered in the United States and other countries. Macintosh and Apple are registered trademarks of Apple Computer, Inc. of the U.S.A. All other brand and/or product names are the property of their respective holders.



© COPYRIGHT 2000 SMARTDISK CORPORATION. ALL COMPANY AND PRODUCT NAMES ARE THE PROPERTY OF THEIR RESPECTIVE HOLDERS. U.S. PATENTS 5,584,043 AND OTHERS.  
FLASHPATH IS MANUFACTURED BY AND A TRADEMARK OF SMARTDISK CORPORATION.

# FlashPath for Windows

## Quick Start

### 1. Load Software:

#### ***From the FlashPath software diskette:***

- Exit and close all other programs.
- Insert the FlashPath software diskette into your floppy drive.
- Select Start  and Run 

and type  
A:\setup.

Click OK to  
load software



- Follow the instructions on your screen to load software into the default directory.  
Note: If you must use a different directory, refer to the Installation and User Guide.
- Reboot (restart) your computer.

#### ***From the SmartDisk web site:***

- Go to the Downloads section of the SmartDisk website ([www.smartdisk.com/DownloadDrivers.html](http://www.smartdisk.com/DownloadDrivers.html)).
- Select Windows Drivers Download Page and then select your operating system: Windows 95/98, Windows 2000 or Windows NT.
- Click on the Windows icon for your operating system.
  - If you choose to download and save the software, you will need to run the software from the selected folder and follow the on-screen instructions.

- If you choose to run the program from our web site, follow the on-screen instructions.
- Reboot (restart) your computer.

### 2. To use your Flashpath

Remove the SmartMedia from your camera and insert it into your FlashPath. Note the orientation shown in the diagram below.

### 3. Insert FlashPath into your Floppy Disk Drive and Transfer Files.

You can now use your FlashPath just like you would an ordinary floppy disk. For example: Use Windows Explorer and double click on your A (or B) drive to access, copy, or delete data on your SmartMedia through the FlashPath in your floppy drive.

Note: Some cameras create a directory on the SmartMedia. You can copy the whole directory or open it and just copy the images you want.



# FlashPath for Macintosh

## Quick Start

### 1. Download FlashPath Software from the SmartDisk Website

a. Go to the Downloads section of the SmartDisk website ([www.smartdisk.com/DownloadDrivers.html](http://www.smartdisk.com/DownloadDrivers.html)).

b. Select Macintosh Utility Download Page and click on the Mac icon to download the file ReadFlashPath.sit. Save it and expand it to a convenient location on your hard drive. Once expanded, you will have two files. One is the utility "ReadFlashPath" and the other is a SimpleText file called Macintosh Quick Start.

If you do not already have a Macintosh file compression utility you can go to the Aladdin Systems website:  
<http://www.aladdinsys.com/expander/index.html>  
and download the Stuff-it Expander for Macintosh.

### 2. Insert the SmartMedia into your FlashPath

Remove the SmartMedia from your camera and insert it into your FlashPath. Note the orientation shown in the diagram to the right.

### 3. Use FlashPath in Your Floppy Disk Drive to Transfer Files.

You can now use your SmartMedia like a floppy disk to copy files to your hard drive.

**IMPORTANT:** Turn off the PC Exchange Control panel before launching FlashPath.

a. Launch FlashPath by going to the location where you saved ReadFlashPath. Double click on ReadFlashPath icon.

b. Follow the on screen instructions. NOTE: Insert FlashPath into the floppy drive when instructed.

c. Open the appropriate folder to transfer the images you want to your hard drive.

**IMPORTANT:** Folders cannot be transferred. If you intend to transfer all files, **you must open the folder first.**

d. Select All Files (in a folder) or press and hold the Command key while selecting only the files you want to transfer.



e. Click Open and select the hard drive destination for your images



f. If you are in a sub-folder on the SmartMedia, you can go up one folder level by selecting the .. \ line.



# Table of Contents

## Chapter 1

<b>Welcome to FlashPath.....</b>	<b>5</b>
FlashPath Is .....	5
Operating and Storage Conditions.....	5
Installing Batteries in Your FlashPath.....	6
Inserting SmartMedia into the FlashPath.....	6

## Chapter 2

<b>Using FlashPath for Windows® 95/98/2000..</b>	<b>8</b>
Installation (for Windows® 95/98/2000) .....	8
Installing FlashPath under Microsoft® Windows® 95/98.....	8
Using FlashPath for Microsoft® Windows® 98, Windows® 95, and Windows® 2000.....	8
Uninstalling FlashPath .....	9
Under Microsoft® Windows® 95/98/2000 .....	

## Chapter 3

<b>FlashPath for Macintosh® PowerBook® and PowerPC® .....</b>	<b>10</b>
Downloading the FlashPath utility.....	10
Using the ReadFlashPath utility.....	10
Removing the ReadFlashPath Utility.....	11

## Chapter 4

<b>Using FlashPath v3.x for Windows® NT 4.0/SP3 thru SP6 .....</b>	<b>12</b>
Installation .....	12
Using FlashPath for Microsoft® Windows® NT 4.0 ..	12
Uninstalling FlashPath .....	13

## Chapter 5

<b>Utility Software .....</b>	<b>14</b>
Using FlashPath Status Monitor under Microsoft® Windows® 95/98/NT/2000.....	14
Status Monitor messages.....	15
Formatting SmartMedia.....	16

## Chapter 6

<b>Troubleshooting.....</b>	<b>17</b>
-----------------------------	-----------

## Important Message

### For Macintosh and Windows NT users:

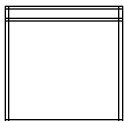
In order to use FlashPath under the Macintosh or Windows NT operating systems, please visit the SmartDisk web site at [www.smartdisk.com](http://www.smartdisk.com) to view download options for the appropriate FlashPath software.

# Welcome to FlashPath

Check the contents of the package immediately after purchase.



FlashPath



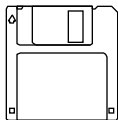
Jewel case



Lithium batteries (installed)  
CR2016



SmartMedia  
(if purchased)



Floppy diskette with  
FlashPath software

## FlashPath:

- Fits in your floppy disk drive just like a floppy disk.
- Lets you read data from or write data to a SmartMedia. Note: FlashPath for Macintosh is Read Only.
- Supports 2MB, 4MB, 8MB, 16MB, 32MB, 64MB and 128MB (when available) SmartMedia.\*

\*Early production FlashPath models support SmartMedia cards only up to 32MB. Newer models support 64MB and 128MB cards. Your FlashPath is an early production model if its thin side edges are black plastic.

## Operating and Storage Conditions

- **Operating temperatures:** +10°C to +40°C
- **Storage temperatures:** -20°C to +65°C
- **Operating humidity:** 20 to 80% maximum, non-condensing
- **Storage humidity:** 95% maximum, non-condensing

### Recommendations for Use:

- To protect FlashPath and the floppy disk drive, remove FlashPath from your floppy disk drive as soon as you have finished using it.
- Be sure to remove FlashPath from the floppy disk drive and place it in its jewel case when not using it.

### Note:

- Avoid operating and storing the product in an environment subject to excessive temperature fluctuations which may result in dew condensation, even if the above operating and storing conditions are met.



## CAUTION

FlashPath may not function properly with floppy disk drives of certain brands or manufacturers. FlashPath may not be used with an externally connected floppy disk drive, a 120MB or other high-capacity floppy disk drive.

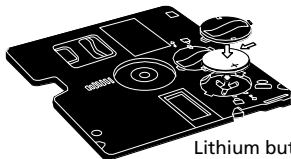
# Installing Batteries in Your FlashPath

## Removing and Installing Batteries

When you purchase the product, batteries have been pre-installed in FlashPath. When the batteries run out, replace with new ones. (Recommended manufacturers: Toshiba, Sanyo, Maxell, Sony).

### To change batteries:

1. Place your FlashPath on a flat surface and gently press down on the battery cover.
2. Use your thumb to turn the cover counter-clockwise.
3. Remove the old batteries and replace them with new lithium button cells. Make sure that the positive sign (marked with a + sign) is up and that the side spring contact is located on the side of the battery. The contact must not be trapped underneath the battery.
4. Replace the cover and turn it clockwise while exerting a slight downward pressure.



Lithium button battery  
CR2016

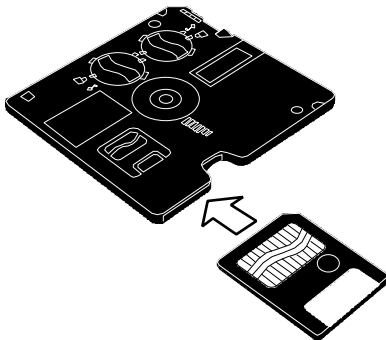
### Note:

- Always replace both batteries at the same time. Care should be taken when replacing batteries to ensure the positive ("+" ) side is up. Use lithium button battery CR2016.

# Inserting SmartMedia into the FlashPath

## To insert SmartMedia:

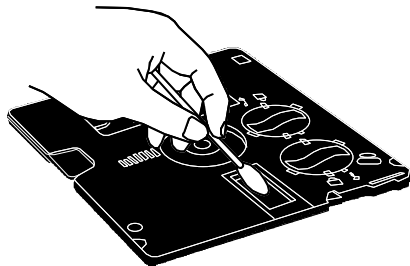
Insert the SmartMedia into the FlashPath with the electronic contacts facing away from the metallic top cover of the FlashPath. Make sure the SmartMedia is inserted firmly in the correct direction.



### Note:

- FlashPath will not operate if SmartMedia is inserted incompletely or upside down.
- When using an Macintosh® PowerPC®, do not insert the FlashPath into the PC until prompted to do so.

After removing FlashPath from the floppy disk drive, wipe off any oil, dust or particles in the slot in the upper center of the part that comes in contact with the floppy disk drive head. After cleaning, place FlashPath in its jewel case for storage.



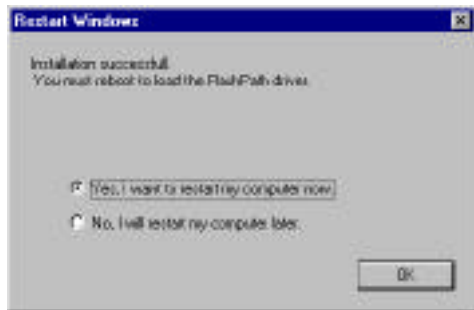
# Chapter 2

## Using FlashPath for Windows® 95/98/2000

### Installing FlashPath under Microsoft® Windows® 95/98 and Windows® 2000

To install FlashPath:

1. Insert your FlashPath Setup Disk.
2. Click on the Start button.
3. Click on the word Run, then type a:setup and click OK.
4. The FlashPath Setup window appears. Follow the directions on the screen to install FlashPath.
5. Setup, by default, copies the FlashPath files to the directory c:\Smartdisk\Flash (unless a different destination directory is chosen) and creates three items: FlashPath Format, FlashPath Status, and FlashPath Help in the FlashPath program group.
6. Once the install is complete, the following screen will appear. Click OK to restart your PC.



### Note:

- FlashPath has only been tested with English (Windows® 2000), Japanese, French, Spanish and German versions of Windows® 98, Windows® 95.
- Under Windows® 95/98/2000, FlashPath can work with both floppy disk drives A: or B.
- FlashPath will not work until you reboot your PC after installation. If your floppy disk drive is B: instead of A:, type b:setup and click OK to run setup.exe.
- Read the latest Readme.txt file information contained in the floppy disk.
- FlashPath may not install correctly if installation is done while other applications are running.

### Using FlashPath for Microsoft® Windows® 98, Windows® 95, and Windows® 2000

With the FlashPath drivers installed on your PC, you can now access the SmartMedia in the FlashPath. This will enable you to read/write data to/from it, just as if it were a floppy disk!

### Using FlashPath

1. Insert the SmartMedia into the FlashPath with the electronic contacts facing away from the metallic top cover of the FlashPath.
2. Insert the FlashPath into the floppy drive.
3. FlashPath can now be accessed through the floppy drive. You can copy, cut or paste to or from the FlashPath, delete, move, edit files (using word processors, spreadsheet programs, photo editors, etc.)
4. Do not compress the SmartMedia in the FlashPath using drivespace stacker, etc... You can store Zip files on FlashPath. However, you cannot compress the file system on the SmartMedia.

## Note:

- It is not necessary to use the utility "FlashPath Format" on new SmartMedia, they are preformatted at the factory. The FlashPath Format utility should be used if the file system on the SmartMedia becomes corrupted. **The FlashPath Format utility should not be used to erase old pictures.**

## To format the SmartMedia using the FlashPath Format utility:

1. Insert the SmartMedia to be formatted into the FlashPath.
2. Insert the FlashPath into floppy drive A: or B:
3. Run "FlashPath Format":
  - Click on Start, Programs, FlashPath, and FlashPath Format.
  - a. Select the disk drive and enter volume label.
  - b. Click OK.
4. Press Y (yes) to confirm that you want to format the SmartMedia.
5. Press any key to continue - format is complete.
6. In order to prevent data corruption, please be sure not to eject the FlashPath while formatting.

## To erase old pictures off of the SmartMedia

1. First copy any picture file you want to keep to your hard drive, a floppy disk, or other media.
2. To delete the old picture files, click on the file(s) and select File/Delete from the menu bar (or press the Delete key).

## Uninstalling FlashPath

### Uninstalling FlashPath under Microsoft® Windows® 95/98 and Windows® 2000

1. To uninstall FlashPath software, click on Start/Settings/Control Panel. Use delete (add/delete) to uninstall FlashPath.
2. The following screen will appear.



1. Click Yes and follow the directions on the screen to uninstall the FlashPath software.

Note: If you receive the message,



**Always choose Yes To All to remove shared files when deleting FlashPath products.**

## CAUTION

- Be sure to reboot to unload the FlashPath driver from memory.

# Chapter 3

## FlashPath for Macintosh® PowerBook® and PowerPC®

### NOTE:

FlashPath for the Macintosh PowerBook and PowerPC is a read only application. You cannot write to, modify, or delete files on the FlashPath SmartMedia.

### Software Environment:

Macintosh System Software 7.5.1 or higher.

### Supported Platforms:

Successful operations have been completed on the following Mac systems:

- Macintosh Power PC 6100/60 (601/60) running Mac OS 7.5.1
- Macintosh PowerPC 7200/90 (601/90) running Mac OS 8.1b
- Macintosh Power PC 8100/80 (601/80) running Mac OS 7.5.3
- Macintosh PowerPC G3 running Mac OS 8.1
- Macintosh PowerBook G3 running Mac OS 8.1

### Non-Supported Platforms:

This version does not support the following versions of the Macintosh:

- Macintosh PowerMac 8500/180 - B1-7.5.3 revision 2.2 System Software.
- Macintosh Centris 650 (68040/16 MHz) running Mac OS 7.6.1
- Macintosh Quadra 610 (68040/20 MHz) running Mac OS 7.5.3

### System Requirements:

RAM: 5MB or more

Hard Disk: 32MB or more free space.

### Downloading the FlashPath Utility:

1. Go to the Downloads section of the SmartDisk website ([www.smartdisk.com/DownloadDrivers.html](http://www.smartdisk.com/DownloadDrivers.html)).
2. Select Macintosh Utility Download Page and click on the Mac icon to download the file ReadFlashPath.sit; save it and expand it to a convenient location on your hard drive. Once expanded you will have two files: one is the utility "ReadFlashPath" and the other is a SimpleText file called Macintosh Quick Start.

### Note:

- If you do not have a PDF reader on your PC, click on Get Acrobat Reader (on the SmartDisk Downloads page) to load Adobe Acrobat Reader onto your PC.

### Using FlashPath for Macintosh:

**IMPORTANT:** Turn off the PC Exchange Control panel before launching ReadFlashPath.

1. Launch the utility by going to the location where you saved ReadFlashPath. Double click on the ReadFlashPath icon.



ReadFlashPath  
utility icon

2. Follow the on screen instructions until the SmartMedia window opens.
3. Open the appropriate folder to transfer the images you want to your hard drive.

**IMPORTANT:** Folders cannot be transferred. If you intend to transfer All Files, you must open the folder first.



4. Select All Files (in a folder) or press and hold the Command key while selecting only the files you want to transfer.

If your camera supports thumbnails, they can be displayed for each image.

5. Click Open and select the hard drive destination for your images



6. If two or more folders are on the SmartMedia you can go up one folder level by selecting the .. \ line.

## Removing the FlashPath utility:

Drag and drop the ReadFlashPath utility from your hard disk into the "Trash."

## Using FlashPath in the left bay of a PowerBook G3

To use FlashPath in the left bay, press and hold the Command key as the Import from FlashPath is selected.

# Chapter 4

## Using FlashPath v3.x for Windows® NT 4.0/SP3 thru SP6

### Installation (for Windows® NT 4.0/SP3 thru SP6) System Requirements:

To use FlashPath, you need the following hardware and software:

- An IBM-PC or fully compatible personal computer with a hard disk drive
- PLEASENOTE:
  - Does NOT support multiple CPU Intel x86 systems. Requires a SINGLE Intel x86 (Pentium or 486DX) or fully compatible CPU.
  - Does NOT work on RISC based Systems (Alpha AXP, MIPS R4x00, or PowerPCs)
- Microsoft® Windows® NT 4.0
  - Service Pack 3, 4, 5 or 6 must be installed FIRST.
  - This version of FlashPath has only been tested with English, Japanese, French, Spanish and German versions of Windows NT 4.0.
- A 3.5 inch floppy disk drive as drive A: or drive B: (either a 1.44 MB drive or a Japanese 3 mode drive)
- FlashPath
- FlashPath install disk

### To install FlashPath:

1. You must first have "Service Pack 3, 4, 5 or 6" installed. If this is not already installed, then logon to Windows® NT as "Administrator" or a user with "Administrator privileges", install "Service Pack 3, 4, 5 or 6", then restart Windows® NT.
2. Make sure all programs are closed.

3. a. Go to the Downloads section of the SmartDisk website ([www.smartdisk.com/DownloadDrivers.html](http://www.smartdisk.com/DownloadDrivers.html)).  
b. Select Windows Drivers Download Page and then select your operating system: Windows NT.  
c. Download and save drivers according to the instructions given on your screen.
4. Setup, by default, copies the FlashPath files to the directory c:\Smartdisk\Flash (unless a different destination directory is chosen) and creates three items: FlashPath Format, FlashPath Status, and FlashPath Help in the program group called FlashPath.
6. Reboot your PC to install the FlashPath drivers.

### Note:

- FlashPath will not work until you reboot your PC.
- Read the latest Readme.txt file information contained in the floppy disk.
- FlashPath may not install correctly if installation is done while other applications are running.

### Using FlashPath for Microsoft® Windows® NT 4.0

With the FlashPath drivers installed on your PC you can now access the SmartMedia in the FlashPath. This will enable you to read/write data to/from it, just as if it were a floppy disk!

### To use FlashPath:

1. Insert the SmartMedia into the FlashPath with the electronic contacts facing away from the metallic top cover of the FlashPath.
2. Insert the FlashPath into the floppy drive.

- FlashPath can now be accessed through the floppy drive. You can copy, cut or paste to or from the FlashPath, and delete, move, edit files (using word processors, spreadsheet programs, photo editors, etc.)

#### Note:

- It is not necessary to use the utility "FlashPath Format" on new SmartMedia, they are preformatted at the factory. The FlashPath Format utility should only be used if the file system on the SmartMedia becomes corrupted. **The FlashPath Format utility should not be used to erase old pictures.**

#### To format the SmartMedia using the FlashPath Format utility:

- Insert the SmartMedia to be formatted into the FlashPath.
- Insert the FlashPath into floppy drive A: or B:
- Run "FlashPath Format":
- Select the drive and enter volume label. Click "OK" to format the SmartMedia.
- In order to prevent data corruption, please be sure not to eject the FlashPath while formatting.

#### To erase old pictures from the SmartMedia:

- First copy any picture files you want to keep to your hard drive, a floppy disk, or other media.
- To delete the old picture files, click on the file(s) and select File/Delete from the menu bar (or press the Delete key).

## Uninstalling FlashPath

### Uninstalling FlashPath under Microsoft® Windows® 95/98 and Windows® 2000

- To uninstall FlashPath software, click on Start/Settings/Control Panel. Use delete (add/delete) to uninstall FlashPath.
- The following screen will appear.



- Click Yes and follow the directions on the screen to uninstall the FlashPath software.\\

Note: If you receive the message,



**Always choose Yes To All to remove shared files when deleting FlashPath products.**

## CAUTION

- Be sure to reboot to unload the FlashPath driver from memory.

## Chapter 5

### Utility Software

#### Using FlashPath Status Monitor under Microsoft® Windows® 95/98/NT/2000

This section discusses the methods for using the FlashPath Status Monitor and explains various messages the program displays.

##### To Start the Status Monitor Program:

1. The FlashPath Status Monitor is automatically loaded at startup.
2. After starting the program, the Status Monitor icon appears on the task bar in the lower right corner of the screen.
3. To call up the Status window, click on the Status Monitor icon.



#### CAUTION

- While a DOS prompt is running, the Status Monitor will not display the current status.

#### CAUTION

- **Starting Windows® 95/98/NT or Windows® 2000**  
FlashPath does not function as a start-up disk. Be sure to complete start-up of Windows® 95/98/NT or Windows® 2000 before inserting FlashPath into the floppy disk drive.
- **Turning PC power on and off**  
Do not turn the power of your PC on and off or reset it while FlashPath is in the floppy disk drive.
- **Floppy disk drive utility software**  
Please note that some floppy disk drive utility software commercially available may not be used together with FlashPath.

#### Status Monitor Icon

An icon image is constantly displayed and shows diskette mode (no FlashPath installed and/or accessed) or FlashPath mode (and battery condition).

1. Note: Right click on the Status Monitor icon to access the Help file.

Diskette Mode



Normal Operation



Low Battery



Battery Critical



## Status Monitor Messages

Status Error messages pop-up automatically when you position your cursor over the Status Monitor icon. The Status Monitor display will be updated each time FlashPath is accessed.

<u>Message</u>	<u>Condition</u>	<u>Corrective Action</u>
Diskette Mode	No FlashPath with a SmartMedia in drive	Insert SmartMedia into FlashPath and insert FlashPath into drive.
Normal Operation	Computer able to read from FlashPath	N/A
Battery Low	Reads - enabled	Let computer complete reads; replace batteries.
Battery Critical	Reads - disabled	Replace batteries immediately.
Sleeping	Device has entered sleep mode to conserve batteries (no reads)	Eject, wait awhile, and reinsert FlashPath.
Missing SmartMedia	SmartMedia not detected in FlashPath.	Eject FlashPath. Check for SmartMedia. Check that SmartMedia is inserted correctly. Reinsert FlashPath.

## System Error Messages

System Error messages automatically open when their condition exists. Each error message is accompanied by an icon.

<u>Message</u>	<u>Condition</u>	<u>Corrective Action</u>
Excessive Bad Spots	Excessive bad spots in SmartMedia.	Let computer complete reads (if possible) and replace corrupted SmartMedia with a new one.
Sleeping	The FlashPath has gone to sleep.	Eject, wait awhile, and reinsert FlashPath.
No Media	There is no SmartMedia in the FlashPath.	Eject FlashPath. Check for SmartMedia. Check that SmartMedia is inserted correctly. Reinsert FlashPath.
Low Battery	The batteries in the FlashPath are very low.	Let computer complete reads. Replace batteries.
Battery Critical	The battery in the FlashPath has reached a critical stage and will expire very quickly. Reads disabled.	Replace batteries immediately.

## Formatting SmartMedia

### To format SmartMedia Using the FlashPath Format Utility:

1. Insert the SmartMedia card to be formatted into FlashPath.
2. Insert FlashPath into the floppy disk drive. To run FlashPath Format, click on Start, Programs, FlashPath and FlashPath Format.

**FlashPath for Macintosh® PowerPC®** - There is no FlashPath Format Utility.

3. Depending on which operating system you are using, you will be asked to either Press Y (yes) to confirm that you want to format SmartMedia or you will be asked to select the drive and volume label (optional) and click [OK] to format SmartMedia.

### Note:

- To format SmartMedia, use only the FlashPath format utility or your camera's format utility.
- Without inserting SmartMedia into the FlashPath, your PC will not recognize FlashPath even if it is inserted into the floppy disk drive.
- To prolong battery life, always remove FlashPath from the floppy disk drive when it is not in use.

### Precautions for Use

1. **Overwriting prohibition** - Even if you attach an "Overwriting Prohibited" sticker to your SmartMedia card, FlashPath **will not recognize it**.
2. **Shutdown** - To save battery power, FlashPath features a Shutdown mode that allows it to shut itself down after it is not accessed for five minutes. To release the Shutdown mode, remove FlashPath

from the floppy disk drive, wait a while and then reinsert it.

3. **Precautions on access** - Never remove FlashPath from the floppy disk drive while it is being accessed (reading, writing, erasing, formatting, etc.). This could result in corruption or erasure of data on the disk and malfunctioning of SmartMedia. If FlashPath is ejected while data is being loaded, loading cannot be completed, even if it appears completed.

# Chapter 6

## Troubleshooting

### 1. FlashPath is in the shutdown mode. What should I do?

Eject the FlashPath from the floppy disk drive, wait awhile and then insert it again.

### 2. The computer does not recognize the FlashPath. Why is this?

If you attempt to access the FlashPath while inserting it in the floppy disk drive, the FlashPath may not be recognized and the message: "The disk in drive A is not formatted" may be displayed accidentally.

In most cases, the computer will recognize the FlashPath if you eject it and insert it again, and access the drive.

The computer may not recognize the FlashPath under the following conditions:

- **FlashPath automatically powers off after 5 minutes of inactivity, to extend battery life.** If this occurs, eject the FlashPath from the floppy disk drive, wait a while and then insert it again.
- **When the batteries are not loaded or are almost completely exhausted.** Replace the batteries.
- **When the batteries are loaded in the wrong direction.** The (+) pole of each battery should face the battery cover when inserted correctly. Reinsert the batteries.

- **The FlashPath driver has not been installed (or the system was not restarted after installation).** Install the FlashPath drivers if they were not installed previously and reboot your computer.

### 3. I am having problems writing to the FlashPath/SmartMedia (ERROR creating <filename.ext>), or having problems using FlashPath Format for formatting the SmartMedia in the FlashPath. What should I do?

Some anti-virus programs may interfere with either writing files to the FlashPath/SmartMedia, or interfere with "FlashPath Format". In most cases, this can be solved by changing the "protection settings" for the background anti-virus "shield" program to only scan files on RUN and NOT on COPY, CREATE, RENAME, or similar file operations.

In some rare cases, you may need to disable the background anti-virus "shield" program, in order to use "FlashPath Format", or to copy files from the PC (i.e. from the hard drive, another floppy drive) to the SmartMedia in the FlashPath.

### 4. I can't seem to format the SmartMedia. What should I do?

You MUST format the SmartMedia in your digital camera or in the FlashPath. Follow your digital camera manufacturer's recommendation for formatting SmartMedia.

### 5. Is it necessary to format the SmartMedia before reusing it in a camera?

No, you CAN use DOSor Windows® "delete" or "erase" functions to remove unwanted picture

files from the SmartMedia (before erasing the SmartMedia, copy any picture files you do want to save to the PC's hard drive or to a floppy disk.)

**If you want to format the SmartMedia in the FlashPath, Select:**

Start -> Programs -> FlashPath -> FlashPath Format.

**6. A write protect sticker is attached to the SmartMedia, but the write protect status is not recognized. Why?**

The FlashPath does not recognize the write protect status of the SmartMedia, even when a write protect sticker is attached to it.

**7. The FlashPath Status Monitor has disappeared from the Windows® task bar. What should I do?**

If, after displaying the FlashPath Status Monitor window, the X (close) button is clicked without clicking the OK button, the FlashPath Status Monitor program terminates operation and the icon disappears from the task bar.

**To restart the FlashPath Status Monitor program, Select:**

Start -> Programs -> FlashPath -> FlashPath Status.

**8. How do I delete the FlashPath Status Monitor from the Start Menu?**

See your Microsoft manual to remove FlashPath Status Monitor from the Startup Menu.

**To temporarily re-activate the FlashPath Status Monitor, select:**

Start -> Programs -> FlashPath -> FlashPath Status.

**9. Why is the FlashPath's data writing speed slower than the data reading speed?**

Unlike ordinary floppy disks, the FlashPath exchanges data with the SmartMedia while communicating with the driver software and FlashPath hardware.

As a result, performance is not the same for data read and write. It takes about twice as long to write data as to read it. This is not a malfunction.

## Important!

- Operating instructions are subject to change without notice.
- No part of this document may be reproduced in any form or by any means, electronic or mechanical, for any purpose except strictly for an individual's private use, without the express written permission of SmartDisk Corporation or SmartDisk International, Inc.

### Exemption from Obligation

- No liability can be assumed for damage resulting from fire, earthquake, actions of a third party, or accidents beyond our control. We cannot be held responsible for damage resulting from intentional abuse, negligence, incorrect usage, or usage under abnormal conditions by the customer.
- No liability can be assumed for damage related to the use of or inability to use this product, including loss of profit, inability to perform work, or modification or loss of memory contents.
- No liability can be assumed for damage resulting from product use in any manner other than described in the operating instructions.
- No liability can be assumed for damage resulting from malfunction due to any combination with peripheral devices.

## Safety Precautions

**For maximum safety, please observe the following precautions.**

### Definitions of Indications



#### DANGER

Shows that incorrect handling and/or operation may put the user in a critical situation with potential serious injury or death.



#### WARNING

Shows that incorrect handling and/or operation could possibly cause serious injury or death to the user.



#### CAUTION

Shows that incorrect handling and/or operation may cause bodily harm<sup>\*1</sup> and/or property damage<sup>\*2</sup>.

<sup>\*1</sup> Bodily harm refers to injury, burn, electric shock and other kinds of harm that do not require hospitalization or long-term hospital treatment.

<sup>\*2</sup> Property damage covers all damages related to housing, buildings, household/personal belongings, cattle and pets.

### Definitions of Symbols



Shows that a particular action or way of handling equipment is prohibited, accompanied by a specific description ("DON'T," etc.) or illustration close to the symbol.



Shows that a specific way of handling equipment is to be used, accompanied by a specific description ("DO," etc.) or illustration close to the symbol.

## **DANGER**

### **When handling batteries...**



**DON'T**

- Do not disassemble or modify the battery.
- Do not connect the positive and negative terminals with any metal such as wire. Do not transport or store batteries together with metallic objects.
- Do not heat batteries or directly expose them to fire.
- Do not drive nails into, strike with a hammer, or step on the battery. Failure to observe the above could result in battery leaks, heat emission, ignition, rupturing, skin burns or other injury.

## **WARNING**

### **Keep the batteries out of the reach of small children.**



**DO**

If swallowed, poisoning or asphyxiation can result. Seek a doctor's medical treatment immediately.

### **When handling batteries...**



**DON'T**

- Do not disassemble, modify, repair or charge the battery. Do not combine old and new batteries.
- Observe the positive and negative polarity indications when inserting the batteries.
- Do not allow dead batteries to remain in the battery compartment. Failure to observe the above could result in battery leaks, heat emission, rupturing, skin burns or other kind of injury.

### **If leaking occurs, do not allow battery fluid to come in contact with the skin.**



**DON'T  
CONTACT**

Doing so could result in skin burning. If battery fluid gets on your skin or clothes, wash immediately with water. If battery fluid gets in your eyes, flush with water and seek medical treatment by a physician immediately.

### **Use only the recommended batteries when replacing.**



**DO**

Failure to do so could result in battery leaks, heat emission, rupturing, skin burns or other kind of injury.

## **CAUTION**



**DON'T**

### **Avoid using FlashPath near sources of heat or flame.**

Doing so could result in smoke or fire.



**DON'T**

### **Do not immerse FlashPath in liquids such as water, chemicals or oil.**

Doing so could result in short circuiting, electric shock or fire.



**DO**

### **If bent, dropped or exposed to strong impact, have the product inspected at the place of purchase or contact us.**

Failure to do so could result in smoke or fire.



**DON'T**

**DISASSEMBLE**

### **Do not attempt to repair, modify or disassemble FlashPath.**

Doing so could result in fire, electric shock or injury.



**DON'T**

### **Do not make direct contact with or touch the pins (connecting surface) of SmartMedia with metal objects.**

Internal data could be damaged or erased by static electricity.



**DON'T**

### **Do not turn the power off while uploading data to or downloading data from SmartMedia.**

Doing so could damage or erase the internal data.



## CAUTION



**DON'T**

**Do not unplug or expose to vibration or impact while uploading data to or downloading data from SmartMedia.**

Doing so could damage or erase the internal data.



**DO**

**Be sure to save data to another medium at regular intervals in case the data stored in SmartMedia is damaged or lost.**

We are not liable, however, for data saved to any other medium.



**DO**

**Make sure SmartMedia contains no essential data or files before formatting.**

Failure to do so will result in loss of data.



**DON'T**

**Do not turn off the power or touch the floppy disk drive push button while the floppy disk drive is operating.**

Doing so could damage or erase data in SmartMedia.



**DO**

**Check the contents before reformatting SmartMedia which has been used before.**

When SmartMedia is formatted, all the data saved in the SmartMedia is erased.



**DO**

**Data in SmartMedia cannot be protected from overwriting, so be careful when loading data.**

Even if you attach an "Overwriting Prohibited" sticker to your SmartMedia, it will not be recognized by FlashPath. Therefore, be careful not to erase or replace data inadvertently.



**DO**

**If a strange odor, strange sound or smoke is emitted while using FlashPath, immediately turn off the power and unplug the PC power cord from the electric outlet.**

Failure to do so could result in fire or equipment damage. For repair, contact the place of purchase or contact us.