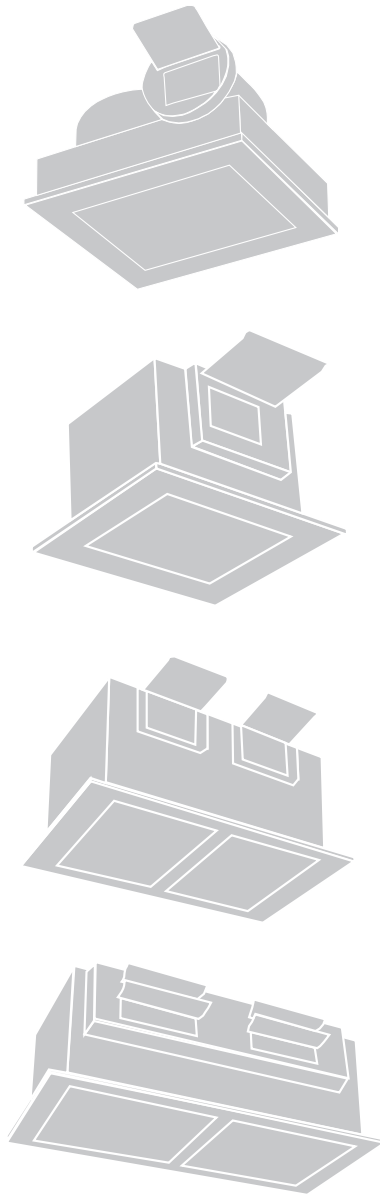


Gemini



# Gemini

## Ceiling, Wall and Inline Duct Fans

<b>Introduction</b>	2
<b>Standard Construction Features</b>	3
<b>Specifications &amp; Dimensions</b>	
GC 126 - 188	4
GC 222 - 960	5
GC 1000 - 2000	6
GN 126 - 188	7
GN 222 - 960	8
GN 1000 - 2000	9
<b>Options &amp; Accessories</b>	
Motors, Transformer, Switches & Controls	10
Grilles, Damper & Filters	11
Duct Adapters & Vents	12
Isolator & Roof Accessories	13
Conversion Kits and Discharge Direction Installation Options	14
<b>Performance Data</b>	
GC Data Tables	15
GN Data Tables	16

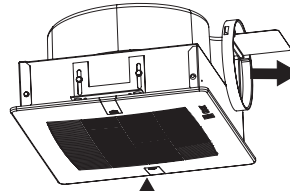
## A Range of Size and Installations

LOREN COOK COMPANY Gemini fans provide maximum performance, durability, and ease of installation in a wide variety of ceiling (GC) and inline (GN) clean air exhaust applications.

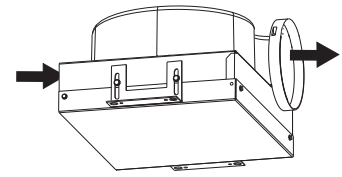
There is a range of sizes, with direct drive motors, in either single wide or double wide construction.

Also, Gemini fans are easily field convertible from ceiling to inline or inline to ceiling, depending on the installation needs.

Sizes 126 - 188 shown. See page 14 for additional options.

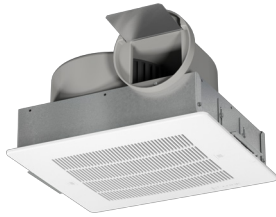


**Ceiling (GC)**

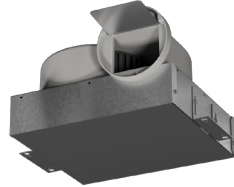


**Inline (GN)**

### Size: 126 - 188



GC

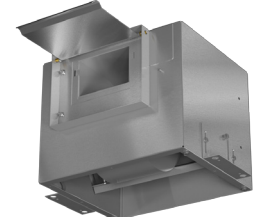


GN

### Size: 222 - 740

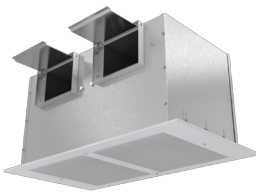


GC

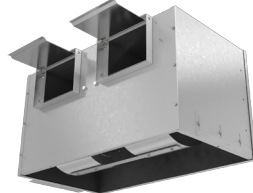


GN

### Size: 822 - 960



GC

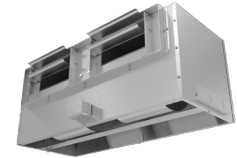


GN

### Size: 1000 - 2000



GC



GN

GC & GN "Gemini" Room Exhausts		Size	Max. CFM	Max. SP	24hr	
Ceiling	GC	126 - 188	260	1"	✓	✓
Inline	GN					
Ceiling	GC	222 - 740	850	1"	✓	✓
Inline	GN					
Ceiling	GC	822 - 960	1,800	1"	✓	
Inline	GN					
Ceiling	GC	1000 - 2000	3,400	1"	✓	
Inline	GN					

**24hr** = 24 Hour Express

= ENERGY STAR® certified (select models)



## Quality Tested

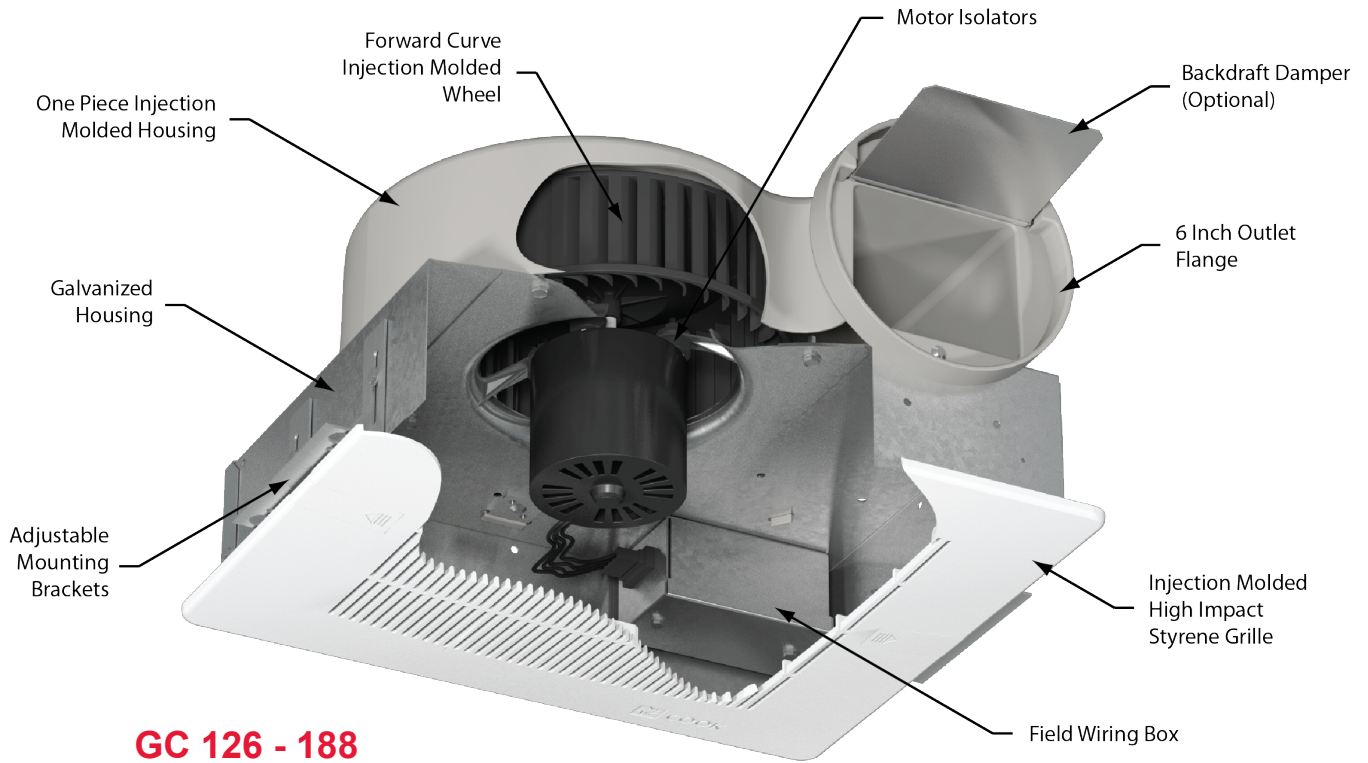
Made in the USA in an ISO 9001 certified factory.

Tested in COOK's AMCA registered laboratory in accordance with AMCA standards.

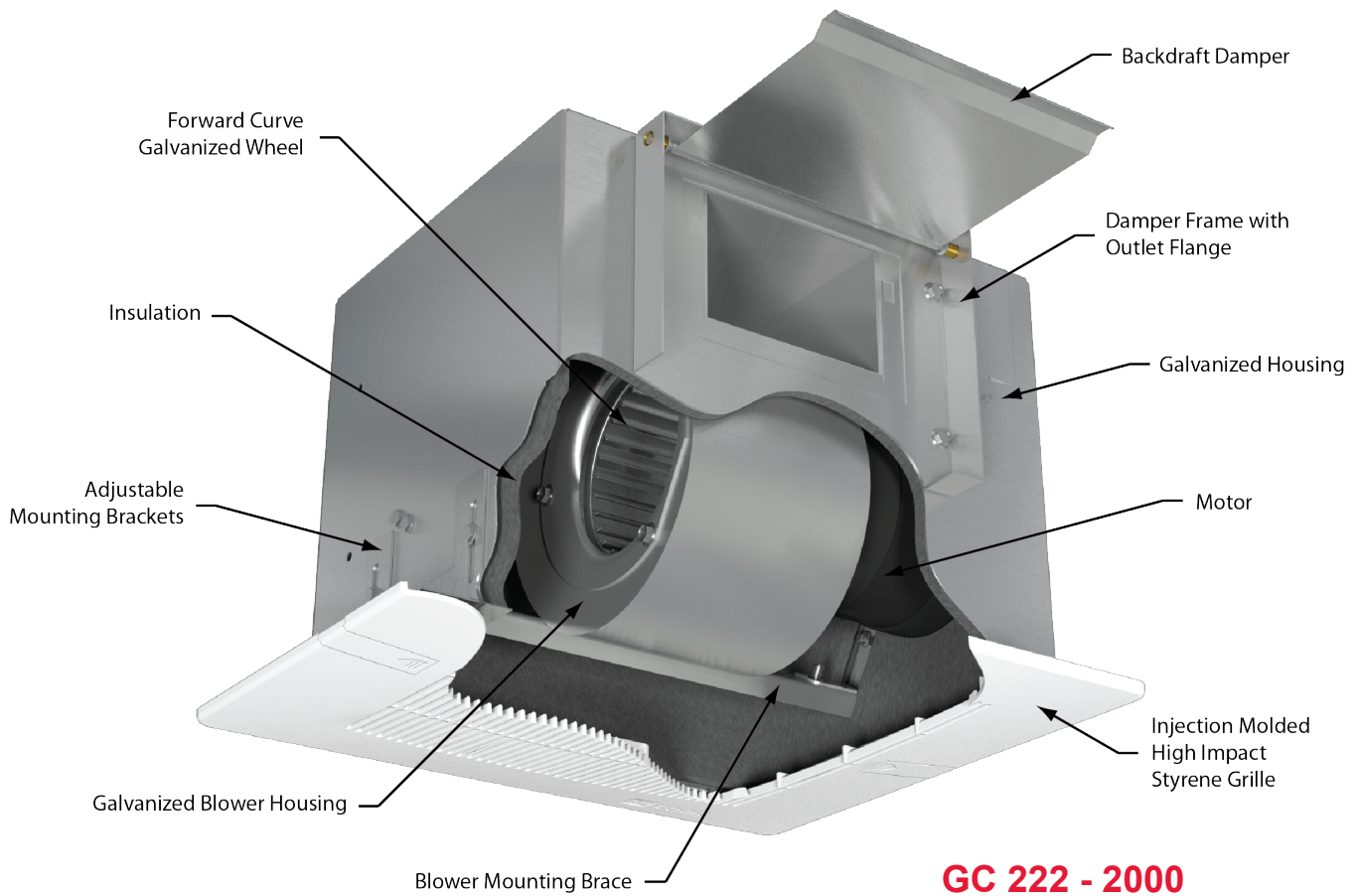
GC sizes 128, 222 & 242 are ENERGY STAR® certified products.

All units are listed by Underwriters Laboratory (UL 705) and UL listed for Canada (cUL 705). GC and GN 126-188 are UL 507 and cUL 507 listed.

GN sizes 200 through 2000 series units are available with UL 1995 listing (Heating & Cooling Equipment) and cUL 1995 listing for Canada. When a Gemini 200 - 2000 unit is supplying a separate modular cooling or heating source, UL 1995 listing may be required by local code.



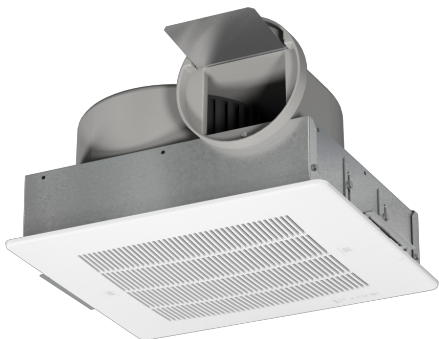
**GC 126 - 188**



**GC 222 - 2000**  
GC 222 shown

## GC Sizes 126 - 188

### Gemini Ceiling Fan



Loren Cook Company certifies that the Gemini GC 126-188 are licensed to bear the AMCA Seal. The ratings shown are based on tests and procedures performed in accordance with AMCA Publication 211 and AMCA Publication 311, and comply with requirements of the AMCA Certified Ratings Program.



Type Gemini GC 126-188 are furnished standard with UL 507 & cUL 507 listing (Electric Fan/ GPWX).



Gemini GC 128 is a ENERGY STAR® certified product.

### Specifications

- **Description:** Fan shall be ceiling mounted, direct driven, centrifugal exhaust fan.
- **Certifications:** Fan shall be manufactured by an ISO 9001 certified company. Fan shall be listed by Underwriters Laboratories (UL 507). Fan shall bear the AMCA Certified Ratings Seal for Sound and Air Performance. Select fans are ENERGY STAR® certified products.
- **Construction:** Fan wheel housing and integral outlet duct collar shall be injection molded from a specially engineered resin exceeding UL requirements for smoke and heat generation. The outlet duct shall have provision for an aluminum backdraft damper with continuous aluminum hinge rod. The inlet box shall be minimum 22 gauge galvanized steel. Motor shall be isolation mounted to a one piece galvanized stamped steel integral motor mount/inlet. A field wiring compartment with disconnect receptacle shall be standard. To accommodate different ceiling thickness, an adjustable prepunched mounting bracket shall be provided. A white, non-yellowing, high impact styrene injection molded grille shall be provided as standard. Unit shall be designed with provision for field conversion from ceiling to inline. Unit shall be shipped in ISTA Certified Transit Tested Packaging.
- **Wheel:** Wheel shall be centrifugal forward curved type, injection molded of polypropylene resin. Wheel shall be balanced in accordance with AMCA Standard 204-05, Balance Quality and Vibration Levels for Fans.
- **Motor:** Motor shall be permanent split capacitor with permanently lubricated sealed bearings and include impedance or thermal overload protection and disconnect plug. Motor shall be furnished at the specified voltage.
- **Product:** Fan shall be model Gemini GC 126-188 as manufactured by Loren Cook Company of Springfield, Missouri.

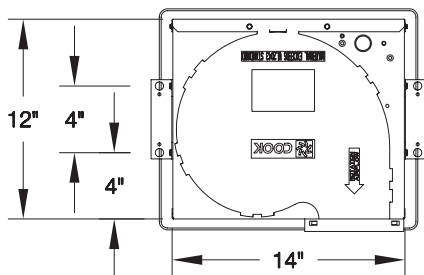
### Dimensions (inches)

Grille Material	A	B
Plastic	13-1/4	
Steel	13-1/2	15-1/2
Aluminum	13-3/4	

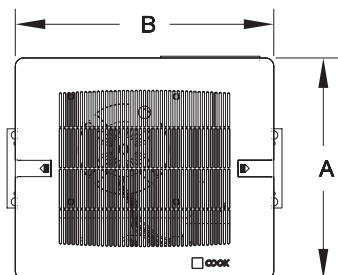
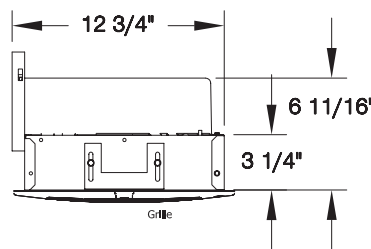
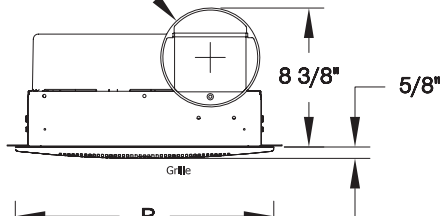
### Weights (pounds)

Size	Shipping Weight
126 - 128	13
146 - 168	15
186 - 188	16

Weights are in pounds.



Ø5 15/16 O.D.

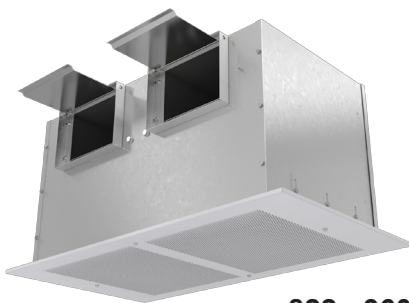


## GC Sizes 222 - 960

### Gemini Ceiling Fan



222 - 740



822 - 960

### Specifications

- **Description:** Fan shall be ceiling, wall, or inline mounted, direct drive, centrifugal exhaust fan.
- **Certifications:** Fan shall be manufactured by an ISO 9001 certified company. Fan shall be listed by Underwriters Laboratories (UL 705) and UL listed for Canada (cUL 705). Fan shall bear the AMCA Certified Ratings Seal for Sound and Air Performance.
- **Construction:** Fan housing shall be minimum 20 gauge galvanized steel and acoustically insulated. Blower and motor assembly shall be mounted to a minimum 14 gauge reinforcing channel and shall be easily removable from the housing. Motor shall be mounted on vibration isolators. Unit shall be supplied with integral wiring box and disconnect receptacle shall be standard. Discharge position shall be convertible from right angle to straight through by moving interchangeable panels. The outlet duct collar shall include a reinforced aluminum damper with continuous aluminum hinge rod and nylon bushings. To accommodate different ceiling thickness, an adjustable prepunched mounting bracket shall be provided. A white, non-yellowing, high impact styrene injection molded grille shall be provided as standard on 200 and 300 series. A powder painted white steel grille shall be provided as standard on 400 - 900 series. Unit shall be shipped in ISTA Certified Transit Tested Packaging.
- **Wheel:** Wheel shall be centrifugal forward curved type, constructed of galvanized steel. Wheel shall be balanced in accordance with AMCA Standard 204-05, Balance Quality and Vibration Levels for Fans.
- **Motor:** Motor shall be permanent split capacitor with permanently lubricated sealed bearings, built-in thermal overload protection and disconnect plug. Motor shall be furnished at the specified voltage.
- **Product:** Fan shall be model Gemini GC 222-960 as manufactured by Loren Cook Company of Springfield, Missouri.



Loren Cook Company certifies that the Gemini GC 222-960 are licensed to bear the AMCA Seal. The ratings shown are based on tests and procedures performed in accordance with AMCA Publication 211 and AMCA Publication 311, and comply with requirements of the AMCA Certified Ratings Program.



Type Gemini GC 222-960 are furnished standard with UL 705 & cUL 705 listing (Power Ventilator/ZACT).

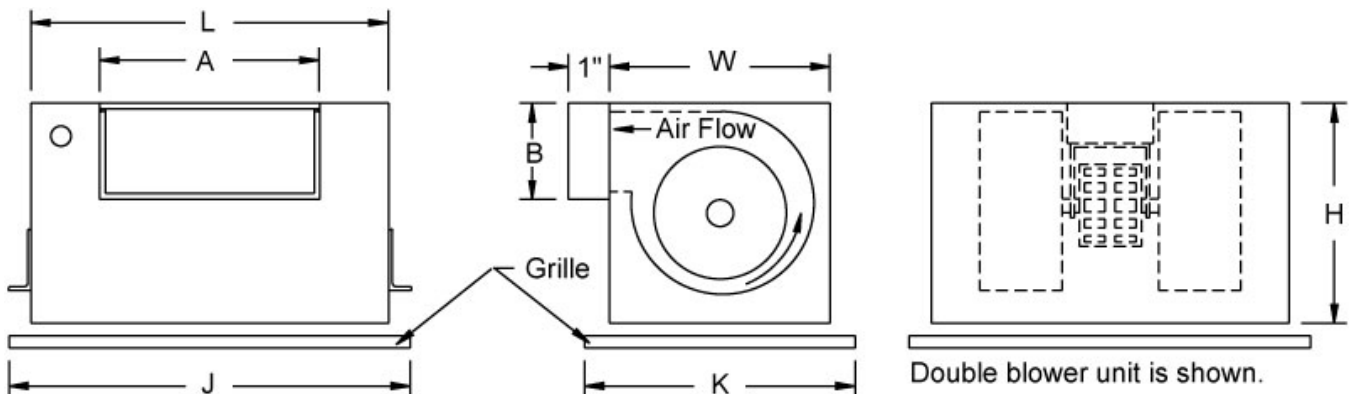


Gemini GC 222-242 are ENERGY STAR® certified products.

### Dimensions (inches)

Size	Housing		Outlet		Grille						Shipping Weight
					Plastic		Steel		Deluxe Aluminum		
	L	W & H	A	B	J	K	J	K	J	K	
222 - 242	12-3/8	9-3/4	6	4-1/2	15-1/2	13-1/4	16-3/8	13-5/8	14-1/4	11	22
322 - 342	12-3/8	10-3/4	8	6	15-1/2	13-1/4	16-3/8	13-5/8	14-1/4	12-1/4	25
422	17	11-7/8	8	6	-	-	21	14-1/4	18-3/4	13-3/4	30
522 - 542	17	11-7/8	8	6	-	-	21	14-1/4	18-3/4	13-3/4	32
622 - 642	17	11-7/8	10-1/2	4-3/4	-	-	21	14-1/4	18-3/4	13-3/4	35
720 - 740	17	11-7/8	10-1/2	4-3/4	-	-	21	14-1/4	18-3/4	13-3/4	36
822 - 862	27	14-11/16	20	6	-	-	31-3/8	17-1/8	28-3/4	16-1/4	74
920 - 960	31	14-11/16	24-1/4	6	-	-	35-1/8	17-1/8	32-3/4	16-1/4	86

Weights are in pounds.



## GC Sizes 1000 - 2000 Specifications

### Gemini Ceiling Fan



Loren Cook Company certifies that the Gemini 1000 and 2000 series are licensed to bear the AMCA Seal. The ratings shown are based on tests and procedures performed in accordance with AMCA Publication 211 and comply with the requirements of the AMCA Certified Ratings Program.



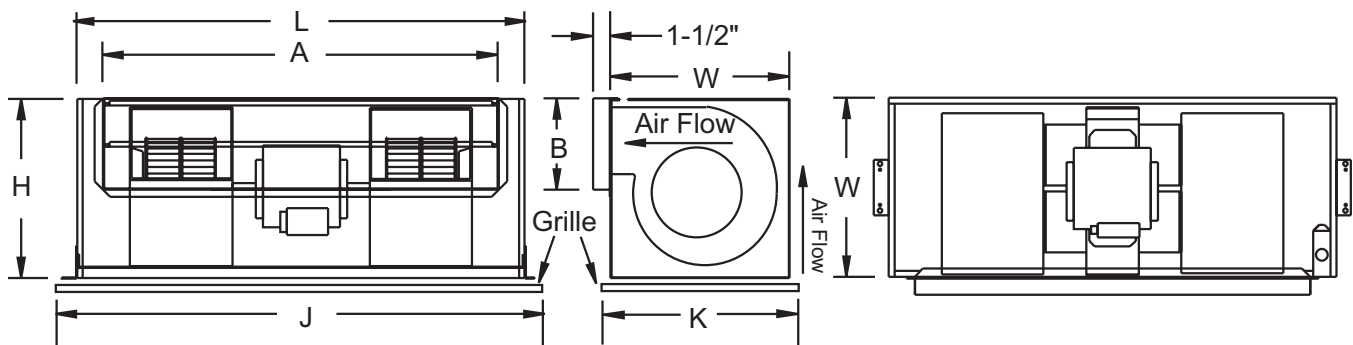
Type Gemini GC 1000 and 2000 are furnished standard with UL 705 & cUL 705 listing (Power Ventilator/ZACT).

- **Description:** Fan shall be ceiling, wall, or inline mounted, direct drive, centrifugal exhaust fan.
- **Certifications:** Fan shall be manufactured by an ISO 9001 certified company. Fan shall be listed by Underwriters Laboratories (UL 705) and UL listed for Canada (cUL 705). Fan shall bear the AMCA Certified Ratings Seal for air performance.
- **Construction:** Fan housing shall be minimum 20 gauge galvanized steel and acoustically insulated. Blower and motor assembly shall be mounted to a minimum 14 gauge reinforcing channel. Motor shall be resiliently mounted. Unit shall be supplied with integral wiring box. Discharge position shall be convertible from right angle to straight through by moving interchangeable panels. The outlet duct collar shall include reinforced aluminum dampers with continuous aluminum hinge rods and nylon bushings. To accommodate different ceiling thickness, an adjustable pre-punched mounting bracket shall be provided. A powder painted white steel grille shall be provided as standard. Unit shall be shipped in ISTA Certified Transit Tested Packaging.
- **Wheel:** Wheels shall be twin DWDI centrifugal forward curved type, constructed of galvanized steel. Wheel shall be balanced in accordance with AMCA Standard 204-05, Balance Quality and Vibration Levels for Fans.
- **Motor:** Motor shall be totally enclosed type with permanently lubricated sealed bearings and built-in thermal overload protection. Motor shall be furnished at the specified voltage and phase.
- **Product:** Fan shall be model GC 1000 and GC 2000 as manufactured by Loren Cook Company of Springfield, Missouri.

### Dimensions (inches)

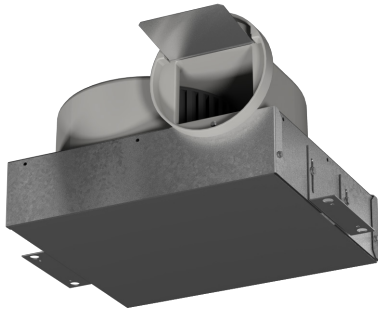
Size	Housing		Outlet		Grille				Shipping Weight
					Standard		Deluxe Aluminum		
	L	W & H	A	B	J	K	J	K	
1000	38-1/8	15-1/4	33-11/16	7-11/16	42-3/8	17-1/8	38-3/4	15-3/4	125
2000	45-7/16	16-5/8	41-1/8	9-5/8	49-1/2	18-1/2	45-3/4	17-1/4	165

Weights are in pounds.



## GN Sizes 126 - 188

### Gemini Inline Fan



Loren Cook Company certifies that the Gemini GN 126-188 are licensed to bear the AMCA Seal. The ratings shown are based on tests and procedures performed in accordance with AMCA Publication 211 and AMCA Publication 311, and comply with requirements of the AMCA Certified Ratings Program.



Type Gemini GN 126 - 188 are furnished standard with UL 507 & cUL 507 listing (Electric Fan/ GPWX).

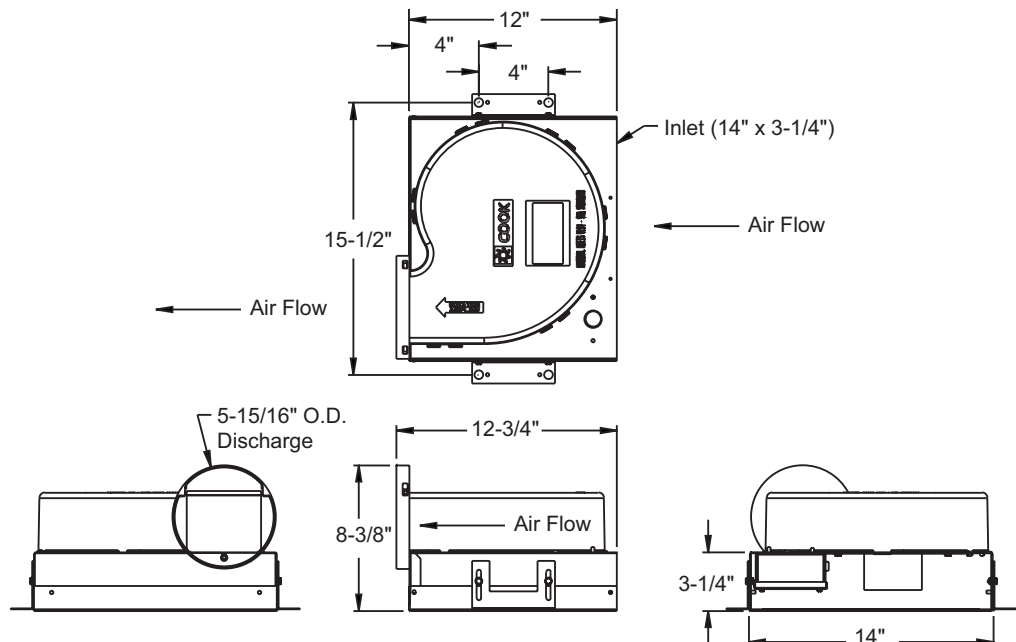
### Specifications

- **Description:** Fan shall be inline mounted, direct drive, centrifugal exhaust fan.
- **Certifications:** Fan shall be manufactured by an ISO 9001 certified company. Fan shall be listed by Underwriters Laboratories (UL 507) and UL listed for Canada (cUL 507). Fan shall bear the AMCA Certified Ratings Seal for sound and air performance.
- **Construction:** Fan wheel housing and integral outlet duct collar shall be injection molded from a specially engineered resin exceeding UL requirements for smoke and heat generation. The outlet duct shall have provision for an aluminum backdraft damper with continuous aluminum hinge rod. The inlet box shall be minimum 22 gauge galvanized steel. Motor shall be isolation mounted to a one piece galvanized stamped steel integral motor mount/inlet. A field wiring compartment with disconnect receptacle shall be standard. To accommodate different mounting positions, an adjustable prepunched mounting bracket shall be provided. Unit shall be shipped in ISTA Certified Transit Tested Packaging.
- **Wheel:** Wheel shall be centrifugal forward curved type, injection molded of polypropylene resin. Wheel shall be balanced in accordance with AMCA Standard 204-05, Balance Quality and Vibration Levels for Fans.
- **Motor:** Motor shall be permanent split capacitor with permanently lubricated sealed bearings and include impedance or thermal overload protection and disconnect plug. Motor shall be furnished at the specified voltage and phase.
- **Product:** Fan shall be model Gemini GN 126 - 188 as manufactured by Loren Cook Company of Springfield, Missouri.

### Dimensions (inches)

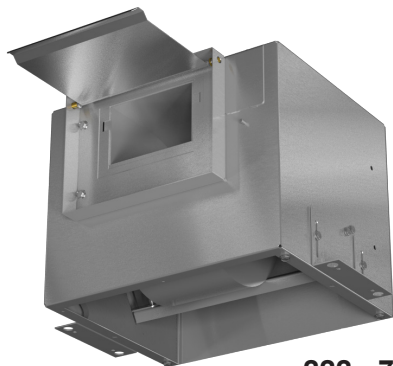
Model	Shipping Weight
126 - 148	15
162 - 188	16

Weights are in pounds.



## GN Sizes 222 - 960

### Gemini Inline Fan



222 - 740



822 - 960



Loren Cook Company certifies that the Gemini GN 222-960 are licensed to bear the AMCA Seal. The ratings shown are based on tests and procedures performed in accordance with AMCA Publication 211 and AMCA Publication 311, and comply with requirements of the AMCA Certified Ratings Program.



Type Gemini GN 222-960 are furnished standard with UL 705 & cUL 705 listing (Power Ventilator/ ZACT).

Type Gemini GN 222-960 is available with UL 1995 & cUL 1995 listing (Heating and Cooling Equipment-Fan Unit), when installed with inlet and outlet duct.

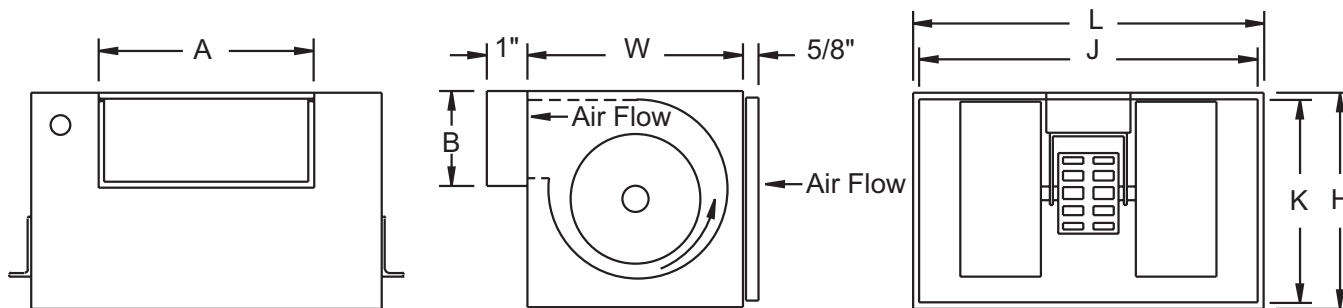
### Specifications

- **Description:** Fan shall be inline mounted, direct drive, centrifugal exhaust fan.
- **Certifications:** Fan shall be manufactured by an ISO 9001 certified company. Fan shall be listed by Underwriters Laboratories (UL 705) and UL listed for Canada (cUL 705). Fan shall bear the AMCA Certified Ratings Seal for sound and air performance.
- **Construction:** Fan housing shall be minimum 20 gauge galvanized steel and acoustically insulated. Blower and motor assembly shall be mounted to a minimum 14 gauge reinforcing channel and shall be easily removable from the housing. Motor shall be mounted on vibration isolators. Unit shall be supplied with integral wiring box and receptacle and disconnect receptacle shall be standard. Discharge position shall be convertible from right angle to straight through by moving interchangeable panels. The outlet duct collar shall include a reinforced aluminum damper with continuous aluminum hinge rod and nylon bushings. To accommodate different mounting positions, an adjustable pre-punched mounting bracket shall be provided. Unit shall be shipped in ISTA Certified Transit Tested Packaging.
- **Wheel:** Wheel shall be centrifugal forward curved type, constructed of galvanized steel. Wheel shall be balanced in accordance with AMCA Standard 204-05, Balance Quality and Vibration Levels for Fans.
- **Motor:** Motor shall be permanent split capacitor with permanently lubricated sealed bearings and built-in thermal overload protection and disconnect plug. Motor shall be furnished at the specified voltage and phase.
- **Product:** Fan shall be model Gemini GN 222-960 as manufactured by Loren Cook Company of Springfield, Missouri.

### Dimensions (inches)

Model	Housing		Outlet		Inlet Collar		Shipping Weight
	L	W & H	A	B	J	K	
222 - 242	12-3/8	9-3/4	6	4-1/2	12-5/16	9-11/16	22
322 - 342	12-3/8	10-3/4	8	6	12-5/16	10-11/16	25
422	17	11-7/8	8	6	16-15/16	11-15/16	30
522 - 542	17	11-7/8	8	6	16-15/16	11-15/16	32
622 - 642	17	11-7/8	10-1/2	4-3/4	16-15/16	11-15/16	35
720 - 740	17	11-7/8	10-1/2	4-3/4	16-15/16	11-15/16	36
822 - 862	27	14-11/16	20	6	27	14-1/2	74
920 - 960	31	14-11/16	24-1/4	6	31	14-1/2	86

Weights are in pounds.



Double blower unit is shown.

## GN Sizes 1000 - 2000 Specifications

### Gemini Inline Fan



Loren Cook Company certifies that the Gemini 1000 and 2000 series are licensed to bear the AMCA Seal. The ratings shown are based on tests and procedures performed in accordance with AMCA Publication 211 and comply with the requirements of the AMCA Certified Ratings Program.



Type Gemini GN 1000 - 2000 are furnished standard with UL 705 & cUL 705 listing (Power Ventilator/ZACT).

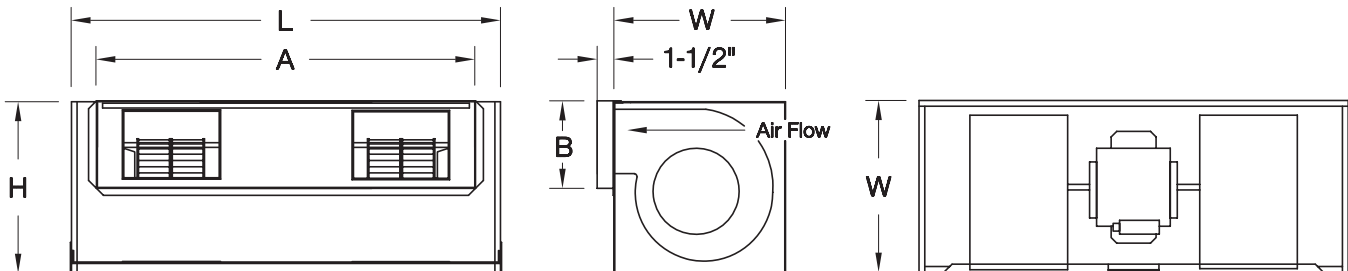
Type Gemini GN 1000-2000 is available with UL 1995 & cUL 1995 listing (Heating and Cooling Equipment-Fan Unit), when installed with inlet and outlet duct.

- **Description:** Fan shall be inline mounted, direct drive, centrifugal exhaust fan.
- **Certifications:** Fan shall be manufactured by an ISO 9001 certified company. Fan shall be listed by Underwriters Laboratories (UL 705) and UL listed for Canada (cUL 705). Fan shall bear the AMCA Certified Ratings Seal for air performance.
- **Construction:** Fan wheel housing shall be minimum 20 gauge galvanized steel and acoustically insulated. Blower and motor assembly shall be mounted to a minimum 14 gauge reinforcing channel. Motor shall be resiliently mounted. Unit shall be supplied with integral wiring box. Discharge position shall be field convertible from straight through, inline configuration to right angle configuration by moving interchangeable panels. The outlet duct collar shall include reinforced aluminum dampers with continuous aluminum hinge rods and nylon bushings. To accommodate different ceiling thickness, an adjustable prepunched mounting bracket shall be provided. Unit shall be shipped in ISTA Certified Transit Tested Packaging.
- **Wheel:** Wheels shall be twin DWDI centrifugal forward curved type, constructed of galvanized steel. Wheel shall be balanced in accordance with AMCA Standard 204-05, Balance Quality and Vibration Levels for Fans.
- **Motor:** Motor shall be totally enclosed type with permanently lubricated sealed bearings and built-in thermal overload protection. Motor shall be furnished at the specified voltage and phase.
- **Product:** Fan shall be model Gemini GN 1000 or GN 2000 as manufactured by Loren Cook Company of Springfield, Missouri.

### Dimensions (inches)

Model	Housing		Outlet		Shipping Weight
	L	W & H	A	B	
1000	38-1/8	15-1/4	33-11/16	7-11/16	125
2000	45-7/16	16-5/8	41-1/8	9-5/8	165

Weights are in pounds.



## Motors

Gemini fans can be specified to meet different line voltages. The Gemini 100 series is available in standard 115 volt. Contact factory for other voltages available. The Gemini 200-900 series are available in standard 115 volt or optional 220/240 volt. The Gemini 1000 and 2000 are available in single-phase 115/208-230 volt or three-phase 208-230/460.

## 277 Volt Transformer

Available for the Gemini 220 - 960 series. This step-down transformer allows for the operation of a 120 volt Gemini fan from a 277 volt source. It is shipped loose for field installation.



## Switches / Controls

### Motion Sensor

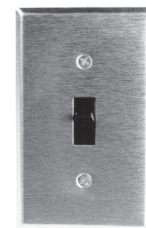
The wall or ceiling mount passive infrared motion sensor will automatically turn the fan on when the room is occupied. Each sensor features an adjustable time delay of 20 seconds to 30 minutes allowing the fan to continue to run after the room is no longer occupied up to the chosen setting. Energy and air demands of the building will be reduced. The sensor must be installed in a 2x4 handy box and should be mounted within the line-of-sight of the occupant. Maximum sensor coverage is 1200 square feet. Shipped loose for field installation. 120 volt only. Refer to the 277 volt transformer.



Wall Motion Sensor



Ceiling Motion Sensor



Time Delay

### Time Delay

This accessory operates both the fan and room light. Moving the switch to the "on" position turns the light & fan on immediately. When the switch is moved to the "off" position, power to the light is interrupted, but the fan will continue to operate one to 60 minutes, based on the time delay setting. 120 volt only. Refer to the 277 volt transformer.

### Fan Speed Controller

The FSC offers excellent energy conservation and lower sound levels when 100 percent of a direct drive fan operating capacity is not required. It employs solid state circuitry for long life and dependability. Available only on 115 volt 230 volt and 277 volt shaded pole or permanent split capacitor direct drive motors and is not available on 1140 RPM and 1725 RPM motors. It is normally shipped loose for field installation. Optional pre-wiring is available.



Models  
126 - 862



Models  
920 - 2000

FSC

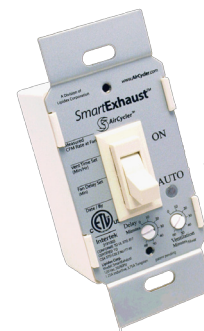
## ASHRAE 62.2 Controllers

### Fan/Light Controller

The ASHRAE 62.2 Gemini Fan/Light Controller is designed to monitor and control fan operation to deliver a specific amount of ventilation in order to comply with ASHRAE 62.2. It utilizes a microprocessor and two dial presets, DELAY and VENTILATION, to monitor and control fan operation. When properly connected to a fan/light combo, the switch acts as a simple on/off switch for the light while controlling the fan operation as preset with the DELAY and VENTILATION dials.

VENTILATION Setting – determines the minimum number of minutes per hour the fan must run.

DELAY Setting – determines the number of minutes the fan should run after the toggle switch has been turned to OFF, allowing the fan to complete the necessary ventilation during the use cycle.



Fan/Light Controller

### Programmable Controller

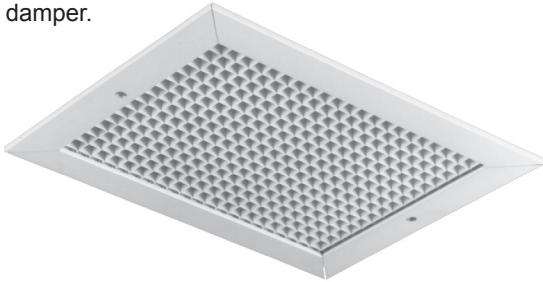
The ASHRAE 62.2 Programmable Gemini Fan Controller is designed to allow more flexibility in control of Gemini ceiling fans. It allows input of the square footage and bedrooms to calculate the proper ventilation requirements in order to comply with ASHRAE 62.2 for whole residence ventilation strategies. The controller can also be used to cycle the fan to specific on/off cycles and allows manual override for continuous operation. While this unit provides sophisticated programming capabilities, it does not allow for the separate control of fan and light.



Programmable Controller

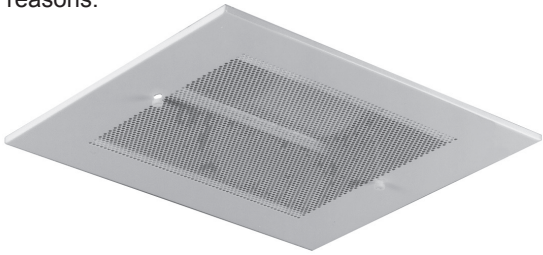
## Grilles Deluxe Aluminum

Attractive, architectural styled grilles available in painted white or aluminum anodized finish. Not available on GC-160, GC-180, GC-1000 or GC-2000 units. Not for use with ceiling radiation damper.



## Painted Steel

Available for the 100, 200, and 300 series fans whenever a steel grille is desired for cosmetic reasons.



## Ceiling Radiation Damper



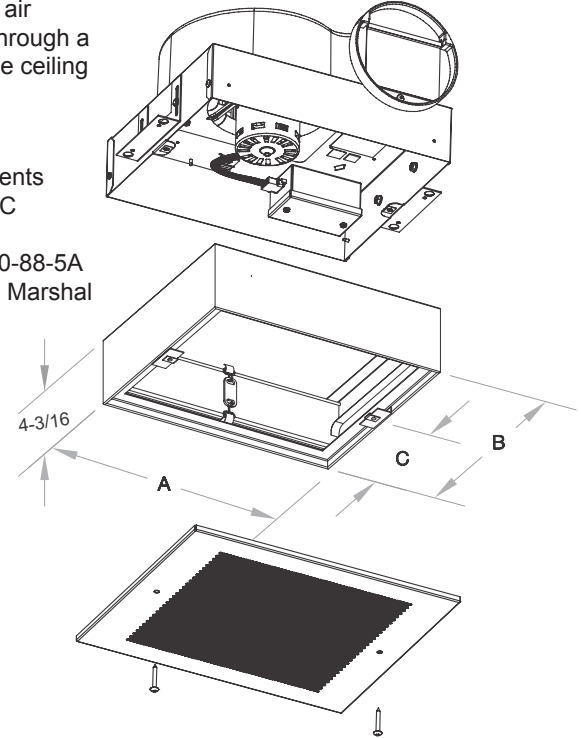
Classified by UL to function as a heat barrier in an air handling penetration through a fire resistive membrane ceiling assembly.

### Meets

- NFPA 90A requirements
- BOCA, SBCCA, UBC requirements
- City of New York 460-88-5A
- California State Fire Marshal 3225-0935: 102

Gemini Series	Model	A	B	C
100	CRD1	14-1/2	12-3/8	6-3/16
200	CRD2	12-5/8	10-1/8	5-1/16
300	CRD3	12-5/8	11-1/8	5-9/16
400-700	CRD4	17-5/8	12-1/4	6-1/8

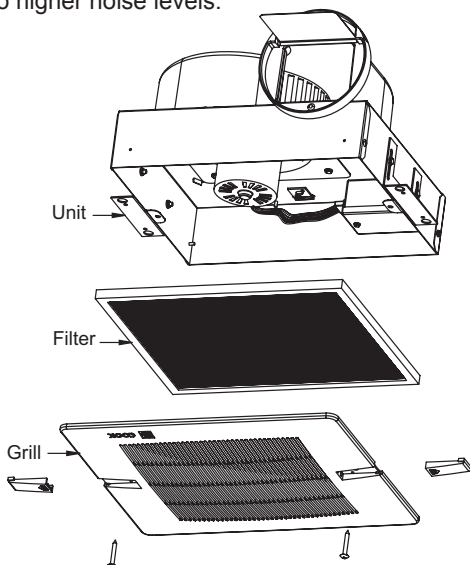
All dimensions in inches.



## Filters

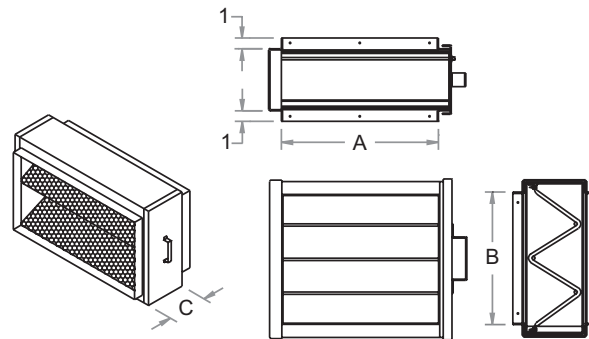
### Grille mounted unit filter

The grille mounted unit filter is a washable aluminum mesh filter which is placed between the grille and the unit. This filter reduces the accumulation of dirt build-up on the motor and the fan wheel. Dirt build-up on the motor can cause the motor to overheat and fail. Dirt build-up on the fan wheel can reduce performance and cause imbalance which leads to higher noise levels.



### Inline filter box

The Gemini filter box can be mounted either directly before the Gemini inline fan or remotely in the duct work. It features a removable filter drawer and a washable filter media. It is constructed of corrosion resistant galvanized steel. Other filter media is available by consulting the factory.



Gemini Series	Filter Unit	A	B	C
200	GFB-200	12-1/16	9-7/16	5
300	GFB-300	12-1/16	10-7/16	5
400-700	GFB-400 - GFB-700	16-11/16	11-11/16	6
800	GFB-800	26-3/4	14-1/4	6
900	GFB-900	30-3/4	14-1/4	6
1000	GFB-1000	37-11/16	14-1/4	6
2000	GFB-2000	45-3/16	15-7/8	6

All dimensions in inches.

## Duct Adapters & Wall Vents

### Round Duct Adapter

The Gemini 200-500 can be field converted from a rectangular outlet to a round outlet by removing the rectangular damper frame and replacing it with the round duct adaptor.

Gemini Series	Model	Duct Diameter
200-300	RDA-6	6
200-500	RDA-8	8

### Round Duct Wall Cap with Damper

Corrosion resistant aluminum with integral aluminum backdraft damper.

Gemini Series	Model	Size	A Sq.	B	C Dia.	D
100-300	WCR6-Alum.	6	8	7	6	12-3/4
200-500	WCR8-Alum.	8	10	9	8	14-1/4

### Wall Cap with Birdscreen

Corrosion resistant galvanized steel or aluminum, with 1/2" birdscreen.

Gemini Series	Model No.		Size	A	B	C	D
	Galv.	Alum.					
300-500	WCG-2	WCA-2	2	10-5/16	7-3/16	6-3/8	8-5/16
600-700	WCG-6	WCA-6	6	12-13/16	6	5	10-13/16
800-800	WCG-8	WCA-8	8	22-5/16	7-3/16	6-3/16	20-5/16
900-900	WCG-9	WCA-9	9	26-9/16	7-15/16	6-15/16	24-9/16

### Eave Elbow

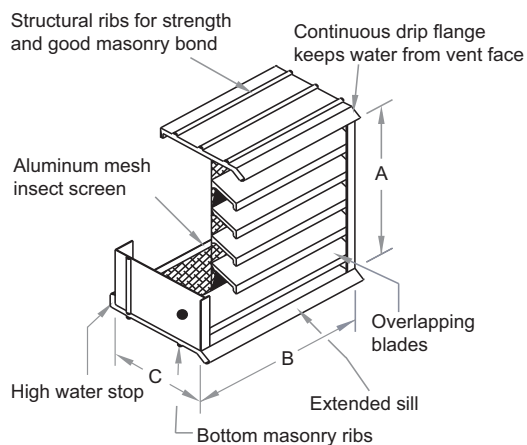
Gemini Series	Model	Type	B	C
300-500	SE 2	Short Eave	12-1/4	12-1/4
300-500	LE 2	Long Eave	15-1/2	14

### Brick Vent

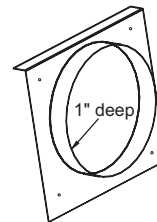
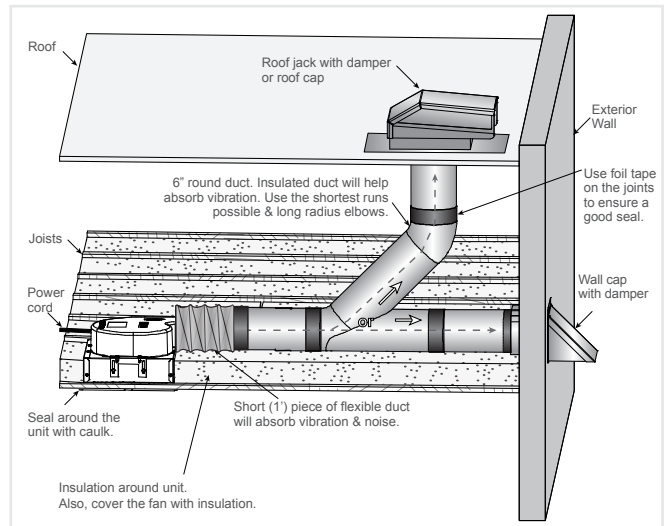
Frame and blades are constructed from .125" thick materials. Designed for maximum protection against water entering building with 4" deep frame and 45 degree blades. The vents come standard with clear anodized finish.

Gemini Series	Model	A	B	C
100	BV1	4-3/4	16-1/2	4
200-400	BV2	4-3/4	16-1/2	4
500-700	BV5	7-3/4	16-1/2	4
800-1000	BV8	24	24	2
2000	BV20	30	30	2

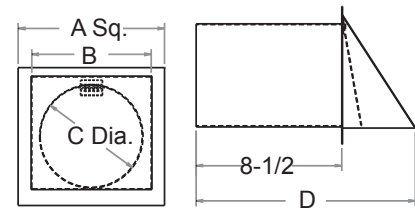
All dimensions in inches.



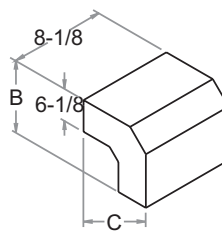
Brick Vent



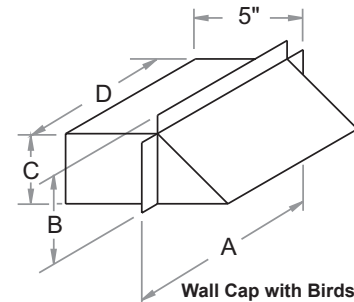
Round Duct Adapter



Round Duct Wall Cap with Damper



Eave Elbow



Wall Cap with Birdscreen

### Related product: Cinder Block Fan

CBF direct drive transfer fans are ideal for ventilating equipment rooms, plumbing & electrical chases or nearly any confined space. The compact design and maintenance free motors provide an economic solution to small ventilating challenges. The efficient propeller and venturi result in quiet operation.



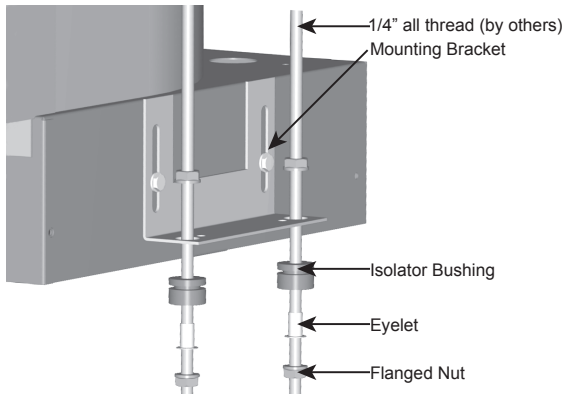
Go to [LorenCook.com/CBF](http://LorenCook.com/CBF)

- Fits in place of a standard 16 by 8 inch cinder block
- Mountable in any wall construction
- Supply or exhaust
- Corrosion resistant
- Tinnerman clips for grille mounting

- Junction box for easy wiring
- Mounting flanges
- Powder coated steel grille
- Easily removable internal assembly
- Options
  - Fan speed control
  - Second grille

Model	Max Watts	Air Performance						
		SP	0.100"	0.125"	0.250"	0.375"	0.400"	
CBF	82	CFM	539	487	472	361	233	218

## Isolators



### Hanging Isolator Kit

For ceiling and inline units 122 through 740. Bushings are made of resilient thermoplastic. The bushings and eyelets are sized to be used with common 1/4" x 20 all thread. Standard Gemini mounting brackets easily accommodate the isolator bushings. Flanged nuts eliminate the need for additional washers and provide for a more simplified field assembly. Rated Load 160 lbs.



Rubber In Shear



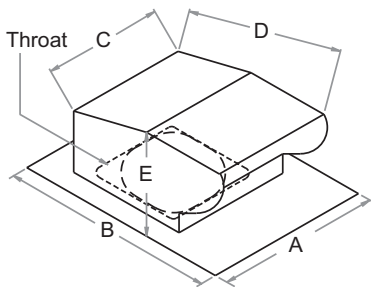
Spring

	Rated Load
SC-75	75

	Rated Load	Spring Rate
SC-35	35	23
SC-70	70	51

Pounds

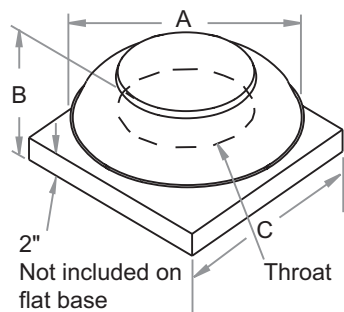
## Roof Vents



### Roof Jack

Corrosion resistant galvanized steel with black baked enamel finish, 1/2" birdscreen and built-in backdraft damper. Optional Roof Jack Adapter is available for the RJ200. The Roof Jack Adapter is a transition from the Gemini Fan to the Roof Jack. The RJR100 has an integral 6 inch round adapter for ease of installation of duct.

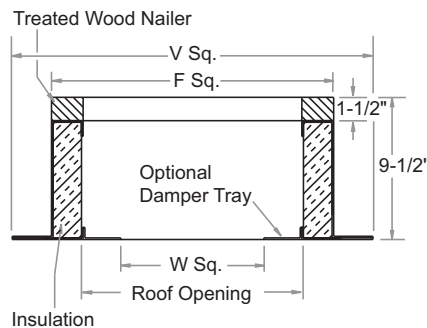
Gemini Series	Model	A	B	C	D	E	Throat Size
100	RJR100	14-1/4	18-3/4	10-3/8	14-1/2	6-1/2	6 Dia.
200-500	RJ200	14-1/4	18-3/4	10-3/8	14-1/2	6-1/2	10-1/4 X 10-3/4



### Roof Cap: Curb Mount or Flat Base Design

All aluminum construction, anti-backdraft flange. Available with optional birdscreen. PR8F, PR12F and PR20F mount directly on the roof with integral flashing. PR8, PR12, PR16 and PR20 are curb mount.

Gemini Series	Model	Type	A	B	C	Throat Dia.
100-500	PR8	Curb Mount	18-1/4	10-1/8	18	8-19/32
	PR8F	Flat Base	18-1/4	8-1/8		
600-700	PR12	Curb Mount	28-1/4	10-5/16	20	12-1/2
	PR12F	Flat Base	28-1/4	8-5/16		
800-900	PR16	Curb Mount	28-1/4	12-5/8	28	16-1/2
	PR16F	Flat Base	28-1/4	10-5/8		
1000-2000	PR20	Curb Mount	36-1/2	13-5/8	32	20-1/2
	PR20F	Flat Base	36-1/2	11-5/8		



### Curb

Gravity dampers are not recommended with the Gemini fans. Motorized dampers are available, by consulting factory. Sound curbs available. Contact factory for dimensions.

Model	Curb Model		F Sq.	V Sq.	W Sq.	Roof Opening
	Galv.	Alum.				
PR8 PR8F	RCG-16	RCA-16	16-1/2	20-1/2	9-3/4	13-1/2
PR12 PR12F	RCG-18	RCA-18	18-1/2	22-1/2	11-3/4	15-1/2
PR16 PR16F	RCG-26	RCA-26	26-1/2	30-1/2	19-3/4	23-1/2
PR20 PR20F	RCG-30	RCA-30	30-1/2	34-1/2	23-3/4	27-1/2

All dimensions in inches.

## Conversion Kits

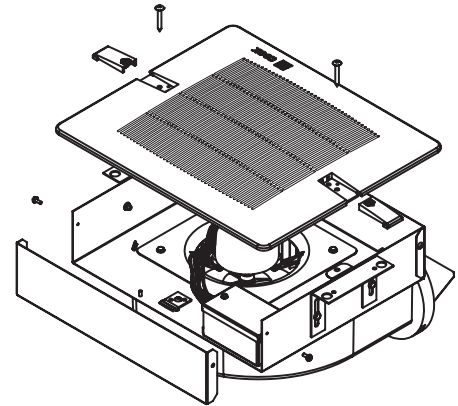
Units are available as ceiling installation or inline installation. The fans may also be converted, in the field, from a ceiling fan to an inline fan – or vice versa.

**Gemini 100 Series:** Kits include all the necessary components to convert a 100 series fan from a ceiling to inline installation, or vice versa.

**Gemini 200 - 2000 Series:** No kits are needed when converting ceiling to inline installation. Instructions are provided. When converting an inline to a ceiling installation, contact a rep for a grille.

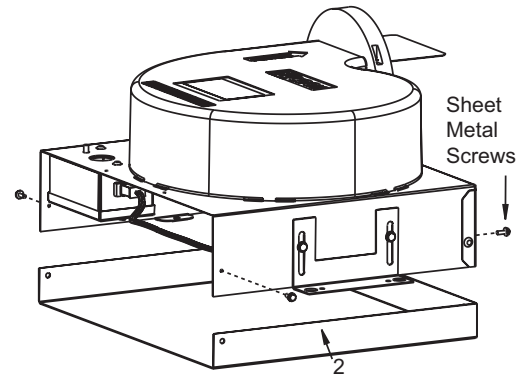
### Inline to Ceiling Conversion Kit

Includes: Inlet box end plate, 2 grille screw clips, 2 grille screws & grille



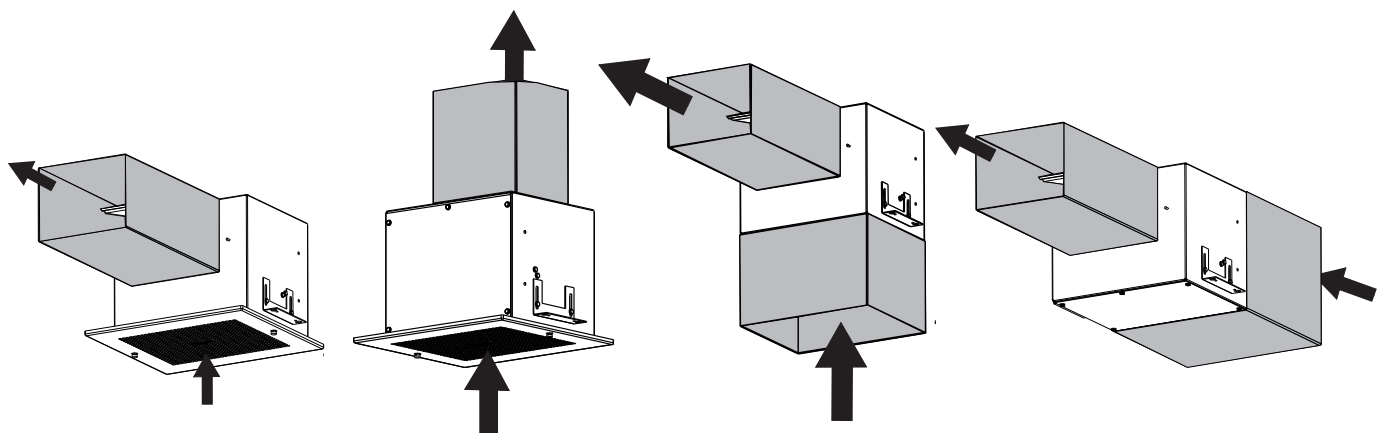
### Ceiling to Inline Conversion Kit

Includes: Inline cover panel



## Installation Options For Sizes 200 - 2000

Discharge direction can be converted from right angle to straight line, without a kit, by swapping an outer panel and / or grille. Airflow is illustrated by black arrows. Ductwork (furnished by the installer) is illustrated by shaded areas.



**Standard Ceiling Installation**

**Alternate Ceiling Installation**

**Standard Inline Installation**

**Alternate Inline Installation**

## GC 126 - 188

Model	RPM	CFM/ Watt at 0.1 SP	0.0 SP		.100 SP		.125 SP		.250 SP		.375 SP		.500 SP		.625 SP		.750 SP		.875 SP		1.000 SP		
			CFM	Sones	CFM	Sones	CFM	Sones	CFM	Sones	CFM	Sones	CFM	Sones	CFM	Sones	CFM	Sones	CFM	Sones	CFM	Sones	CFM
GC-126	550	2.5	70	0.3	53	0.3	48	0.3	32	0.7													
★ GC-128	750	2.8	94	0.8	82	0.9	79	0.9	63	1.0	49	1.3	37	2.0									
GC-146	900	2.9	114	1.2	105	1.2	103	1.2	90	1.3	77	1.5	64	2.0	50	2.5	36	3.0					
GC-148	1075	3.1	152	2.5	144	2.5	142	2.5	132	2.5	120	2.5	108	3.0	94	3.0	78	3.5	56	3.5			
GC-166	1100	3.1	164	3.0	157	3.0	155	3.0	145	3.0	133	3.0	119	3.0	105	3.0	88	3.5	66	3.5	40	3.5	
GC-168	1160	3.0	180	3.5	173	3.5	171	3.5	162	3.5	150	3.5	136	4.0	121	4.0	105	4.5	86	4.5	54	5.0	
GC-186	1100	2.4	231	5.5	226	5.5	225	5.5	218	5.5	209	5.5	199	5.0	186	5.0	170	5.0	151	5.0	129	4.5	
GC-188	1450	2.2	261	7.0	254	6.5	252	6.5	244	6.5	235	6.0	223	6.0	209	6.0	191	5.5	172	5.5	150	5.5	

★ ENERGY STAR® certified.

Performance certified is for Installation Type B: Free Inlet, Ducted Outlet. Performance ratings for GC-126 through GC-188 include the effects of inlet grille. Speed (RPM) shown is nominal. Performance is based on actual speed of the test. The sound ratings shown are loudness values in spherical sones at 5 ft. (1.5m) in a spherical free field calculated per AMCA Standard 301. Values shown are for Installation Type B: Free inlet spherical sone levels.

## GC 222 - 960

Model	RPM	CFM/ Watt at 0.1 SP	0.0 SP		.100 SP		.125 SP		.250 SP		.375 SP		.500 SP		.625 SP		.750 SP		.875 SP		1.000 SP	
			CFM	Sones	CFM	Sones	CFM	Sones	CFM	Sones	CFM	Sones	CFM	Sones	CFM	Sones	CFM	Sones	CFM	Sones	CFM	Sones
★ GC-222	1332	4.8	130	1.5	115	1.3	111	1.3	85	1.2												
★ GC-242	1483	5.2	158	2.5	142	2.0	137	2.0	112	1.5	56	1.3										
GC-322	1600	3.2	204	4.0	191	4.0	187	4.0	165	3.5	139	3.5										
GC-342	1725	3.0	268	5.0	252	5.0	248	4.5	224	4.5	195	4.5	153	4.5								
GC-422	1500	2.8	308	4.0	298	4.0	295	4.0	282	4.0	267	4.5	250	4.0	223	4.0						
GC-522	1400	2.7	213	1.5	208	2.0	207	2.0	201	2.0	194	2.5										
GC-542	1600	2.9	391	5.5	380	5.5	377	5.5	361	5.5	340	5.5	314	5.5	285	5.0	248	4.5				
GC-622	1400	3.3	501	3.5	486	3.5	482	3.5	461	3.0	433	3.0	392	3.0	339	3.0						
GC-642	1500	3.1	602	5.0	582	4.5	576	4.5	548	4.5	512	4.0	471	4.0	421	3.5	350	3.5				
GC-720	1375	2.4	709	5.5	687	5.5	682	5.5	653	5.5	619	5.0	578	5.0	535	5.0	480	4.5	385	4.5		
GC-740	1625	2.2	852	7.0	823	7.0	815	7.0	775	6.5	727	6.0	672	6.0	616	5.0	552	4.5	463	4.0	303	3.5
GC-822	910	3.4	944	3.5	929	3.5	925	3.5	904	4.0	879	4.0	830	4.0								
GC-842	974	3.3	1187	5.0	1157	5.0	1149	5.0	1106	5.0	1043	4.5	905	4.5	637	3.5						
GC-862	1098	3.4	1433	7.0	1371	7.0	1355	6.5	1266	6.5	1149	5.5	995	5.0	775	4.0						
GC-920	925	3.6	1471	6.0	1427	6.0	1415	6.0	1356	6.0	1286	6.5	1190	6.5	1003	7.0						
GC-940	1040	3.5	1653	7.5	1582	7.5	1565	7.0	1481	7.0	1400	7.0	1293	7.0	1089	7.0						
GC-960	1112	3.4	1807	8.5	1716	8.0	1694	8.0	1588	7.5	1491	7.0	1386	7.0	1197	7.0						

★ ENERGY STAR® certified.

Performance certified is for Installation Type B: Free Inlet, Ducted Outlet. Performance ratings for GC-222 through GC-960 include the effects of inlet grille and backdraft damper. Speed (RPM) shown is nominal. Performance is based on actual speed of the test. The sound ratings shown are loudness values in spherical sones at 5 ft. (1.5m) in a spherical free field calculated per AMCA Standard 301. Values shown are for Installation Type B: Free inlet spherical sone levels.

## GC 1000 & 2000

Model	RPM	CFM/ Watt at 0.1 SP	0.0 SP		.100 SP		.125 SP		.250 SP		.375 SP		.500 SP		.625 SP		.750 SP		.875 SP		1.000 SP	
			CFM	Sones	CFM	Sones	CFM	Sones	CFM	Sones	CFM	Sones	CFM	Sones	CFM	Sones	CFM	Sones	CFM	Sones	CFM	Sones
GC-1000	1100	3.1	N/A	N/A	2230	7.8	2207	7.8	2090	7.6	1958	7.1	1796	6.7	1575	6.6	1090	6.6				
GC-2000	1140	2.8	N/A	N/A	3472	9.0	3441	9.0	3282	8.5	3105	8.5	2925	8.5	2736	8.0	2503	8.0	2147	8.0	1431	8.0

Performance certified for GC-1000 and GC-2000 is for Installation Type B: Free inlet, ducted outlet. Performance ratings do not include the effects of appurtenances in the airstream. Speed (RPM) shown is nominal. Performance is based on actual speed of the test. The AMCA Certified Ratings Seal applies to air performance ratings only.

## GN 126 - 188

Model	RPM	CFM/ Watt at 0.1 SP	.0.0 SP		.100 SP		.125 SP		.250 SP		.375 SP		.500 SP		.625 SP		.750 SP		.875 SP		1.000 SP		
			CFM	Sones	CFM	Sones	CFM	Sones	CFM	Sones	CFM	Sones	CFM	Sones	CFM	Sones	CFM	Sones	CFM	Sones	CFM	Sones	CFM
GN-126	550	2.5	70	0.3	53	0.3	48	0.3	32	0.7													
GN-128	750	2.8	94	0.8	82	0.9	79	0.9	63	1.0	49	1.3	37	2.0									
GN-146	900	2.9	114	1.2	105	1.2	103	1.2	90	1.3	77	1.5	64	2.0	50	2.5	36	3.0					
GN-148	1075	3.1	152	2.5	144	2.5	142	2.5	132	2.5	120	2.5	108	3.0	94	3.0	78	3.5	56	3.5			
GN-166	1100	3.1	164	3.0	157	3.0	155	3.0	145	3.0	133	3.0	119	3.0	105	3.0	88	3.5	66	3.5	40	3.5	
GN-168	1160	3.0	180	3.5	173	3.5	171	3.5	162	3.5	150	3.5	136	4.0	121	4.0	105	4.5	86	4.5	54	5.0	
GN-186	1100	2.4	231	5.5	226	5.5	225	5.5	218	5.5	209	5.5	199	5.0	186	5.0	170	5.0	151	5.0	129	4.5	
GN-188	1450	2.2	261	7.0	254	6.5	252	6.5	244	6.5	235	6.0	223	6.0	209	6.0	191	5.5	172	5.5	150	5.5	

Performance certified is for Installation Type B: Free Inlet, Ducted Outlet. Performance ratings for GN-126 through GN-188 include the effects of inlet grille. Speed (RPM) shown is nominal. Performance is based on actual speed of the test. The sound ratings shown are loudness values in spherical sones at 5 ft. (1.5m) in a spherical free field calculated per AMCA Standard 301. Values shown are for Installation Type B: Free inlet spherical sone levels.

## GN 222 - 960

Model	RPM	CFM/ Watt at 0.1 SP	.0.0 SP		.100 SP		.125 SP		.250 SP		.375 SP		.500 SP		.625 SP		.750 SP		.875 SP		1.000 SP		
			CFM	Sones	CFM	Sones	CFM	Sones	CFM	Sones	CFM	Sones	CFM	Sones	CFM	Sones	CFM	Sones	CFM	Sones	CFM	Sones	CFM
GN-222	1332	4.8	130	1.5	115	1.3	111	1.3	85	1.2													
GN-242	1483	5.2	158	2.5	142	2.0	137	2.0	112	1.5	56	1.3											
GN-322	1600	3.2	204	4.0	191	4.0	187	4.0	165	3.5	139	3.5											
GN-342	1725	3.0	268	5.0	252	5.0	248	4.5	224	4.5	195	4.5	153	4.5									
GN-422	1500	2.8	308	4.0	298	4.0	295	4.0	282	4.0	267	4.5	250	4.0	223	4.0							
GN-522	1400	2.7	213	1.5	208	2.0	207	2.0	201	2.0	194	2.5											
GN-542	1600	2.9	391	5.5	380	5.5	377	5.5	361	5.5	340	5.5	314	5.5	285	5.0	248	4.5					
GN-622	1400	3.3	501	3.5	486	3.5	482	3.5	461	3.0	433	3.0	392	3.0	339	3.0							
GN-642	1500	3.1	602	5.0	582	4.5	576	4.5	548	4.5	512	4.0	471	4.0	421	3.5	350	3.5					
GN-720	1375	2.4	709	5.5	687	5.5	682	5.5	653	5.5	619	5.0	578	5.0	535	5.0	480	4.5	385	4.5			
GN-740	1625	2.2	852	7.0	823	7.0	815	7.0	775	6.5	727	6.0	672	6.0	616	5.0	552	4.5	463	4.0	303	3.5	
GN-822	910	3.4	944	3.5	929	3.5	925	3.5	904	4.0	879	4.0	830	4.0									
GN-842	974	3.3	1187	5.0	1157	5.0	1149	5.0	1106	5.0	1043	4.5	905	4.5	637	3.5							
GN-862	1098	3.4	1433	7.0	1371	7.0	1355	6.5	1266	6.5	1149	5.5	995	5.0	775	4.0							
GN-920	925	3.6	1471	6.0	1427	6.0	1415	6.0	1356	6.0	1286	6.5	1190	6.5	1003	7.0							
GN-940	1040	3.5	1653	7.5	1582	7.5	1565	7.0	1481	7.0	1400	7.0	1293	7.0	1089	7.0							
GN-960	1112	3.4	1807	8.5	1716	8.0	1694	8.0	1588	7.5	1491	7.0	1386	7.0	1197	7.0							

Performance certified is for Installation Type B: Free Inlet, Ducted Outlet. Performance ratings for GN-222 through GN-960 include the effects of inlet grille and backdraft damper. Speed (RPM) shown is nominal. Performance is based on actual speed of the test. The sound ratings shown are loudness values in spherical sones at 5 ft. (1.5m) in a spherical free field calculated per AMCA Standard 301. Values shown are for Installation Type B: Free inlet spherical sone levels.

## GN 1000 & 2000

Model	RPM	CFM/ Watt at 0.1 SP	.0.0 SP		.100 SP		.125 SP		.250 SP		.375 SP		.500 SP		.625 SP		.750 SP		.875 SP		1.000 SP		
			CFM	Sones	CFM	Sones	CFM	Sones	CFM	Sones	CFM	Sones	CFM	Sones	CFM	Sones	CFM	Sones	CFM	Sones	CFM	Sones	CFM
GN-1000	1100	3.1	N/A	N/A	2230	7.8	2207	7.8	2090	7.6	1958	7.1	1796	6.7	1575	6.6	1090	6.6					
GN-2000	1140	2.8	N/A	N/A	3472	9.0	3441	9.0	3282	8.5	3105	8.5	2925	8.5	2736	8.0	2503	8.0	2147	8.0	1431	8.0	

Performance certified for GN-1000 and GN-2000 is for Installation Type B: Free inlet, ducted outlet. Performance ratings do not include the effects of appurtenances in the airstream. Speed (RPM) shown is nominal. Performance is based on actual speed of the test. The AMCA Certified Ratings Seal applies to air performance ratings only.



## **LOREN COOK COMPANY**

2015 E. DALE STREET  
SPRINGFIELD, MO 65803-4637

417.869.6474

FAX 417.862.3820

[lorencook.com](http://lorencook.com)