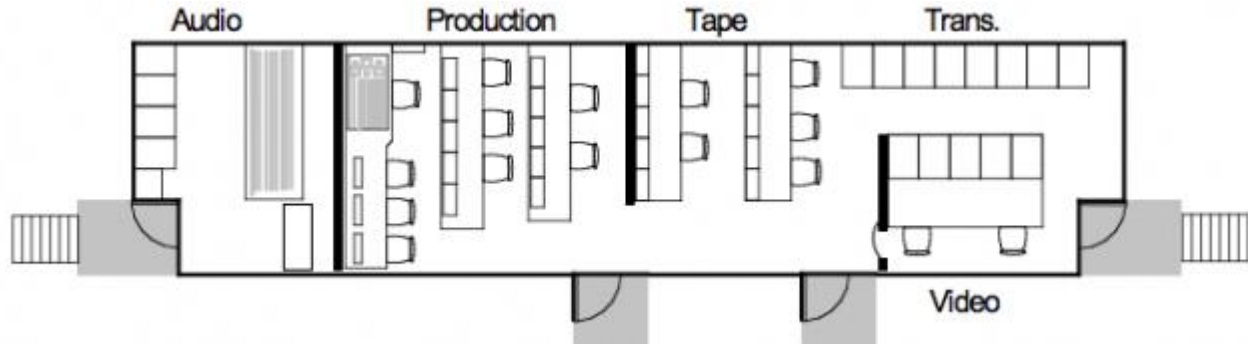


## IMS HD-4 Spec Sheet



### Video Production

Grass Valley HD Kalypso 4 M/E Sw itcher  
 90 x 48 Fully Loaded w / 6  
 Transform Engines  
 Abekas DVEous MX-3 Dual Tw in  
 3rd Bench w ired for bug/score box  
 2nd Hyper X3 or LD Position  
 2 TV Logic 24 inch Multi-Format monitors  
 136 Source - Production Monitor Wall

### Tape / Servers

(2) 6 Ch EVS LSM XT(2)  
 (1) 4 Ch EVS R/O XT(2)  
 EVS Spotbox  
 EVS – IP Director  
 EVS X-File  
 Wired for 2 additional 6 Channel EVS  
 (1) Panasonic AJ-HD1800 DVCPPro  
 (1) Sony PDW-F75 - HD VTR  
 (1) Sony HDW-D1800 HDCAM / Digibeta  
 (1) Sony HDW-M2000 HDCAM / Digibeta  
 Wired for 10 additional HD/SD Decks

### System Equipment

Evertz 288 x 288 HD-SDI Routing Matrix  
 w / 288 VIP X-Links  
 (6) For-A FA 9100/RPS Multi Signal Proc.  
 w / Up/Dow n/Cross/Color Correction  
 (8) AJA FS-1 Frame Sync and Converter

(6) Harris X75HD Multiple Converter and Frame  
 Sync  
 (5) Evertz HD/SD Audio Embedder  
 (9) Evertz HD Dow n Converter w ith AES  
 (8) Evertz HD Frame Syncs  
 (4) Evertz HD Upconverter w ith AES  
 (2) Evertz HD9084 Closed Caption Encoder  
 (2) Evertz 5600MSC Master Sync w / Clock  
 Generator  
 (1) Evertz HD9725LG Logo Inserter;

### Cameras / Lenses

(\*11) Grass Valley LDK8000 Elite  
 Worldcams 720p, 1080i, 24p  
 (7) Super expanders  
 (2) Canon 100x HD lenses  
 (5) Canon 86x HD lenses  
 (3) Canon 22x HD lenses  
 (2) Canon 11x w ide angle HD lenses  
 (7) Vinten Vector 750 Pan Heads w / Tripod  
 (4) Vinten Vision 100 ENG Tripods  
 \* Truck carries 9 cameras - 5 hard, 4 HH.  
 2 more hard cameras added upon request  
 Also available by request:  
 Panasonic AJ-HDX900 DVCPPro ENG Cam  
 Fujinon 17X Eng lens  
 (2) Sony BRC-Z700B Robo POV Cameras  
 w / fiber  
 Sony RMBR300B Robo Controller



IMS PRODUCTIONS • 4555 W 16th ST • INDIANAPOLIS, IN 46222  
OFFICE 317.492.8770 • FACSIMILE 317.492.8746 • WEB IMSPRODUCTIONS.TV

### Graphics

Chyron Hyper-X3  
Boeckler Telestrator w / touchscreen

### Intercom Communications

RTS Adams 136 x 136 RJ Central Matrix  
16 Ch VOIP RVON-16 Card  
12 Ch IFB  
(6) Tiff 2000A Telephone Interface  
(3) Studio Technologies 2 to 4 wire interface  
(2) Telos 1+1 Telephone/QKT interface  
12 Ch Custom Dryer  
(3) SPK300L/D Speaker Stations  
(8) Daltech Annc Talkback Box  
(8) Sennheiser HMD-25XQ Annc Headsets  
(5) Sennheiser HMD-280XQ Annc Headsets  
(25) RTS 325 Beltpacks  
(30) Beyerdynamic DT-108 Single  
Muff Headset  
(20) Beyerdynamic DT-109 Dual  
Muff Headsets  
(32) Telex PH-88 Lightw eight Headsets  
(15) RTS 4030 2 Ch IFB Boxes  
(20) RTS CES-1 Earpieces

### Audio

SSL C100-HD Digital 56 Fader Audio Console  
128 analog input; 96 AES Input;  
96 AES Output; 72 Analog out  
128 Pro Tools Madi I/O  
NVision 256 X 256 Audio Router  
Genelec 8240 Digital Surround Sound  
Monitoring w / Subwoofer & GLM Software  
(2) Dolby 564 Surround Sound Encoder  
Dolby 563 Decoder  
Dolby 571 Encoder  
Dolby 572 Decoder  
Dolby LM100 Loudness Meter  
Dolby DP570 Multi Channel Audio Tool  
SRS CSE-07D Circle Surround Encoder  
SRS CSD-07D Circle Surround Decoder  
(60) Benchmark Analog DA-102  
(2) 360 Systems Digicarts w / Remote

Tascam CD-RW901SL CD Recorder/Player  
(2) Yamaha SPX 2000 Effects Processors  
(4) DBX 160A Compressor Limiters  
Durrough 1200 Stereo Signal Test Set  
Durrough 40 AES Meter Set  
Yamaha Q2031B Stereo 31 Band Equalizer  
Ashley LX 308B 8x2 Analog audio mixer  
(12) Sony ECM77B Lavalier Mics  
(11) Sennheiser ME-66 Shotgun Mics  
(8) Sennheiser MKH-416P Shotgun Mics  
(4) Sennheiser MKH-70-P48 Shotgun Mics  
(8) Electrovoice RE-50 Handheld Mics  
(8) Electrovoice 635B Handheld Mics

### Monitoring

(3) Marshall 15" SunBrite HD LCD Monitor  
(10) Marshall 10.4" LCD Monitor w /  
Multiformat inputs  
(2) Dynex 15" LCD monitors - analog

### Dimensions Power

208 Volts / 3 Phase / 200 Amp service  
200' power cable  
52' L x 13'6" H x 13' W Expanded  
48' x 5' expandable section