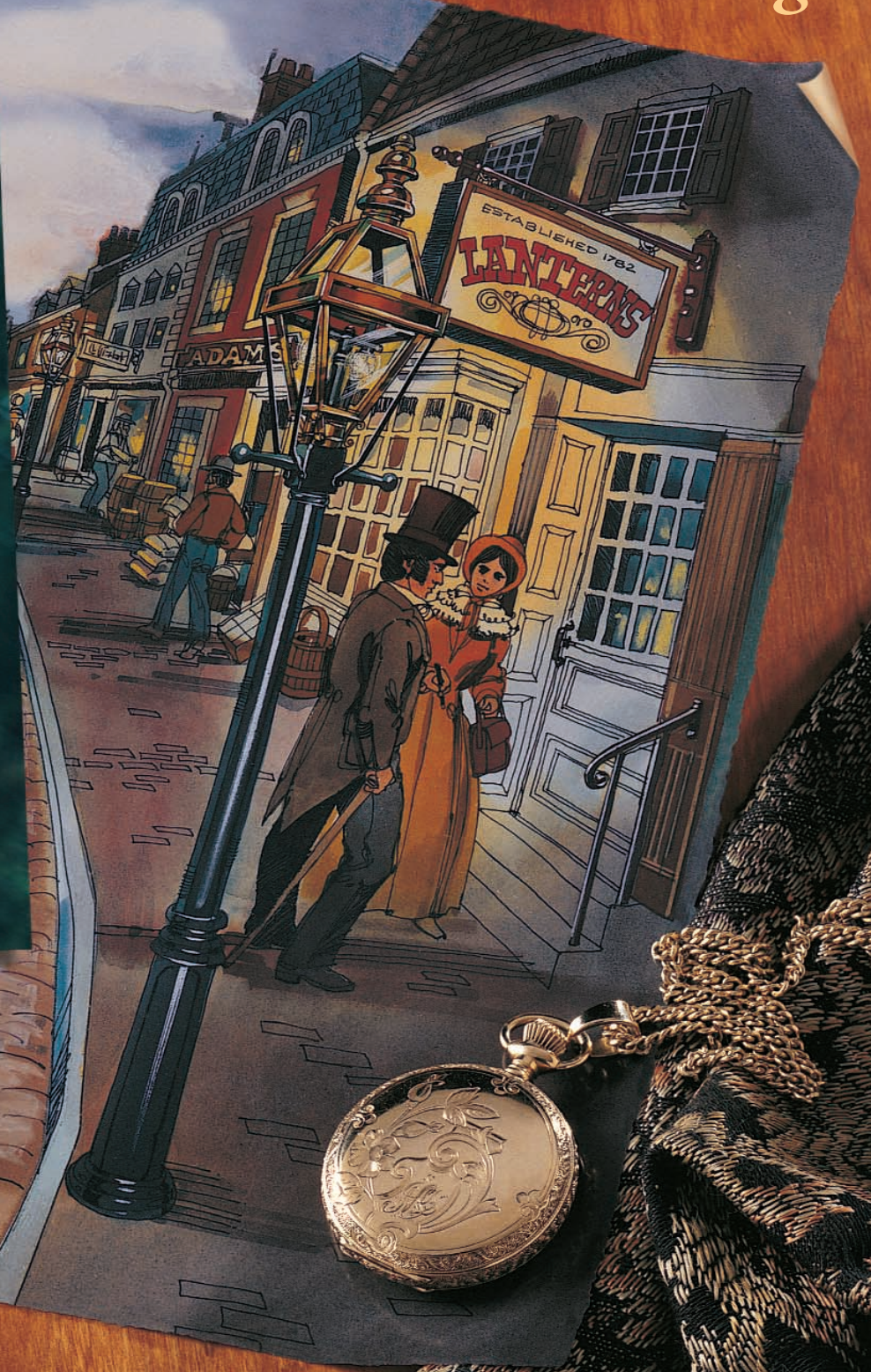


*Bringing Yesteryear
to Light*

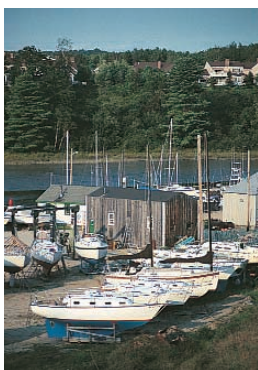


*HERITAGE
LANTERNS*

Our Heritage



At Heritage Lanterns, every single light is created by hand... just for you. Hand skills, rarely found in today's world of mass production, are still used in our craft shop. We individually cut, shape and assemble each light and take great pride in meticulously crafting even the smallest detail.



Heritage Lanterns and Yarmouth, Maine are both steeped in centuries of New England lore and lifestyles. Nestled along the edge of Casco Bay,

the 300-year-old village of Yarmouth provides a wealth of seafarers' stories, of historic homes, and footnotes about fascinating people who've lived here.

Many Heritage designs are taken from old ships' lanterns we've found in the area; some lights are named after inimitable Yarmouth personalities of other centuries. Our Marston Post Light, for example, takes its name from Levi Marston, a renowned Yarmouth ship's captain honored by a queen for heroic

acts on a treacherous sea. The "Heritage" of our lights also extends to the manner in which these lights are made, each one the caring product of skills and tools that date back to 18th century craftsmanship.

While Heritage lights follow the shapes and forms of the 18th century, they're simply stunning when used in contemporary settings. The placement of these lights is limited only by the imagination.

As you explore our catalog, we trust you'll enjoy learning about our lights and about our heritage. In fact, we invite you to visit our spectacular showroom in Billerica, Massachusetts, or visit us here in Yarmouth, where you can walk through our shop, see our lights being made and talk with our craftspeople.

We're very proud of what we do.

"Heritage

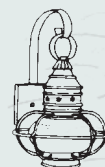
Lanterns stands unique in an age

that measures everything by

how fast you can

do something."

— A Heritage Customer



Our Guarantee

If you don't agree that Heritage lights are the finest made anywhere, return them within 30 days of receipt and receive a prompt and full refund. *It's that simple.*

Heritage lights are sized to make your home even more beautiful...inside and outside!

The best way we can tell you about the size of Heritage lights is to show you a side-by-side comparison. Look at the photographs below. What a difference!

Over the years, manufacturers have made lights smaller in an effort to make them less expensive. But those “little lights” just don’t add anything to the style of the home. Heritage lights are *scaled correctly!* Not only do they perform the essential function of providing light, but they substantially enhance the appearance of your exterior or interior environment!



Lights that Enhance

Heritage lights (like our Onion Light below) are sized to enhance their surroundings. Lights by many others today (like those shown at bottom) are too small and add little to the setting.



B202AC Heritage Light

Choosing the Right Size

As you choose your lights, the best rule of thumb is to “think large.” Many people tend to select fixtures that are too small, particularly for outdoor settings. When choosing lanterns to light your entrance, select a size that’s about one-third the height of your door.

When you’re undecided about sizes you need, create a rough cardboard mock-up using dimensions from the catalog. Hang the mock-up in place and step back from it to put the total setting in perspective. Lights look smaller in a total environment than they do in a showroom or when you’re standing next to them.

Heritage Finishes

All Heritage lights are available in both solid copper and solid brass, and most are also available in Heritage’s Royal Pewter.[™]

Along with choosing your metal, you may select from our lovely handworked finishes.

Royal Pewter and Verdigris finishes are not recommended for outside use.

The candle holders shown are available for purchase. Refer to our price list for details.



Polished Solid Brass



Polished Solid Copper



Antiqued Solid Copper

The Heritage Difference

Our authentic designs speak for themselves throughout the pages of this catalog, but we would like to take a few moments and tell you about some of our exemplary construction features and techniques that aren't always apparent to the eye.

■ **Easily Accessed Bulbs:** We make it simple and safe to change a bulb. Have you ever tried to change a bulb and had trouble fitting your hand through the opening? That doesn't happen with a Heritage light!

■ **Special Rain Protection:** We've gone to great lengths to incorporate special rain protection features. We hide many of these features so well that you can't see them...so be sure to ask!

■ **Full Length Hinges:** We spare no effort or money here so doors won't have a tendency to sag.



■ **Double-Thickness Flat Glass:** Have you ever seen single thickness glass break in severe weather? Our double-thick glass makes it a rare occasion for Heritage owners!

■ **Handblown Globes:** The strength and beauty of hand-blown glass just can't be matched by mass production techniques!

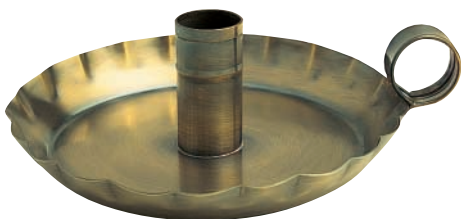
■ **Concealed Wiring:** You won't believe the expensive fixtures we've seen that have exposed electrical wiring. Heritage wall-mounted lights have a back plate that hides and weather-protects wiring.

Channel Construction

An almost-lost art, channel construction duplicates the unmistakable beauty of leaded lights in the early Colonies, and it gives you unmatched lantern strength and weather protection.

Heritage artisans, blending rare skill with concentration, very carefully cut and bend each U-shaped channel. Individual pieces of glass are cut by hand and then fully enclosed within the narrow channels. Once channelled, the glass panels are meticulously soldered together.

Heritage lights made with this age-old technique are renowned for their exceptional strength and beauty.



Antiqued Solid Brass



Antiqued Royal Pewter™



Dark Antiqued Solid Copper



Verdigris on Solid Copper*

No-Rust Metals from Heritage

As you might expect, Heritage uses only metals that will not rust...there will be no "surprises" a few years after installation!

Heritage lights are available in solid copper, solid brass or our very special Royal Pewter.™ Each no-rust metal is available in a selection of lovely hand-applied finishes.

We use no lacquer on any Heritage light so you can enjoy the rich patina that comes with natural aging! Our staff will be pleased to answer any of your questions concerning finishes.

Heritage lights, either indoors or outdoors, need no maintenance. If you like, you may use our recommended Duraglit wadding polish. It both cleans and polishes, preserving open surfaces—yet leaving corners and seams to darken as they should. We do *not* recommend liquid brass polish, as it tends to build a white residue in the seams.

It's Easy To Order!



Just call our Customer Service Department using our toll-free number, and place your order! We

make each light especially for you... and while some times of the year are especially busy, we're usually able to complete your order in about six weeks. We do try to maintain a small stock of our most popular lights, so if you have an immediate need, be sure to ask about these quick-ship items! You may pay for your order by check or by a charge to your MasterCard or VISA account. Most Heritage lights can be shipped by UPS.

Quality

...that speaks for itself!

The simplest way to demonstrate Heritage quality is to show you. Even in fundamental tasks, such as soldering, our craftspeople go the extra step. We don't spot-weld or spot-solder; we take the time to fully solder each seam and joint — such as the one shown on our Onion Light at the right. The solder is built up and carefully rounded to give you maximum strength.

We clean each seam with scrapers and fine steel wool, removing all excess solder. This level of craftsmanship is seen in few lights today, yet it is so important.



If the excess solder isn't removed, it can turn an unexpected — and unsightly — whitish-gray after weathering.

Other design features incorporated in Heritage lights include back plates to conceal both the wiring and the bracket, giving the lanterns a far more pleasing and "clean" appearance.

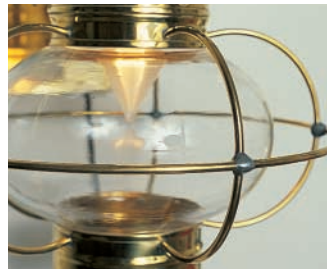


Metal spinning is a time-consuming process and another of the skills "lost" in the midst of 20th century technology. Yet, it is a skill that

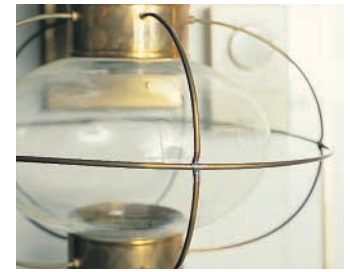
permits us to create many of our elegantly contoured shapes from one piece of metal — adding to the strength and beauty of your Heritage light!

We'll help you select your Heritage lights!

Our Customer Service staff will be glad to assist you with selecting the right style and size of fixture for your home. They're always pleased to answer any questions you may have about the lights or their installation.



Heritage soldered joint



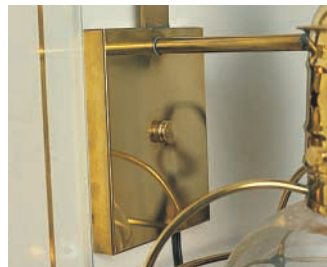
Other maker's soldered joint



Heritage "clean" seams



Other maker's seams after weathering



Heritage back plate with bracket hidden behind



Other maker's back plate with exposed bracket



Heritage conceals wiring for the finest possible appearance

KEY TO PRODUCT NUMBERS

TYPE OF MOUNTING **W**

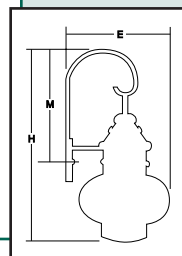
- B** - BRACKET
- C** - CEILING
- H** - HANGING
- L** - CHANDELIER
- P** - POST
- S** - SCONCE
- T** - TABLE
- W** - WALL

131

AB TYPE OF FINISH-METAL

- AB** - ANTIQUE BRASS
- AC** - ANTIQUE COPPER
- DC** - DARK ANTIQUE COPPER
- PB** - POLISHED BRASS
- PC** - POLISHED COPPER
- RP** - ROYAL PEWTER™
- VG** - VERDIGRIS

MODEL NUMBER - **XXX**



KEY TO DIMENSIONS

- E** - EXTENSION FROM WALL
- H** - OVERALL HEIGHT
- M** - DISTANCE BETWEEN TOP AND MOUNTING CAP
- W** - OVERALL FRONT WIDTH

Fixture dimensions are listed in the product specification boxes.

Lanterns

If early Colonial lanterns could speak, they undoubtedly would reveal a wealth of tales and fireside stories that have been lost over the last two centuries. Lanterns were carried by jailers on their prison rounds; by night watchmen as they traversed darkened cobbled streets; by farmers tending their livestock on snowy winter evenings. Lanterns lit the entrances and passageways of America's wayside taverns, and they kept watch over the American patriots struggling to mold a unified government from 13 very independent colonies. Lanterns were the ever-silent bystanders through those early years in American history. Heritage continues the lantern's unique traditions with finely executed designs that will bring warmth and cheer to your home. As you explore our offerings, please keep these important details in mind:



- Wall-mounted lanterns feature a "return" area in back of the light. Wiring, done anywhere within this 1/2-inch deep flush mount area, will be completely out of sight and weather-protected!
- All brackets are made from heavy, solid flatbar and are firmly soldered to the lantern in two or three places. Although the lanterns may appear to be hanging loosely, they do not and cannot swing!

WI06PB Free Standing Oil

Barn Light

*"The winter and spring of 1747–48 were long remembered as a season of anxiety and distress. Nathaniel Blanchard used to tell how he would husk corn in the barn in the evening without a lantern for fear of lurking Indians..."**

Poor Nathaniel Blanchard had to work without the benefit of his lantern, but more typically, New England farmers would go about their morning and evening chores with lanterns like our Barn Light in hand. The original oil-burning Barn Light design has been accurately reproduced in this free-standing oil lantern. An ideal light source for a garden patio or a porch, this fine, old design (with its functional handle) is ideal for modern uses. The oil lamp within the lantern can also be removed and used separately! The wall-mounted adaptation of this charming lantern is electrified and has a solid back with reflector.



WI05AC Wall Mounted Electric

No.	Metals	Description	H	W	E	M
WI05	C,B	Wall	17 1/2	8 1/4	8 3/4	11
WI06	C,B	Oil	17 1/2	8 1/4	—	—

(Standard Socket, up to 100W.)

*W.H. Rowe's *Ancient North Yarmouth and Yarmouth*

Windsor Lights

Channel Construction

Of English origin, these impressive lanterns possess an ageless classic beauty of their own. Available in hanging, wall bracket or post styles, each Windsor Light is distinguished by Heritage's skill-intensive channel construction (see page 3).

Unique to the Windsor is its distinctive appearance from a side perspective, a view that fully reveals its classical lines. The specially designed bracket for the Windsor is unlike any other bracket we make. Also note the 1/8 thick "apron" that extends beyond the lantern's side. While decorative, the apron adds unusual strength to the entire fixture.



B275 Small Bracket



B276PB Medium Bracket

Brackets

No.	Metals	Size	Description	H	W	E	M
B275	C,B	Sm	2 Lt	20	9	12 1/2	13 1/4
B276	C,B	Med	2 Lt	22	10 3/4	14 1/2	13 1/2
B277	C,B	Lge	4 Lt	27	14	17	19

(Candelabra sockets, up to 60W each.)

*Out of the shadows of night
The world rolls into light;
It is daybreak everywhere.*

*The Bells of San Blas
Henry Wadsworth Longfellow*



H277PB Large Hanging

Hanging

No.	Metals	Size	Description	H	W
H275	C,B	Sm	2 Lt	20	9
H276	C,B	Med	2 Lt	22	10 3/4
H277	C,B	Lge	4 Lt	27	14

(Candelabra sockets, up to 60W each.)

(Comes with 12" of chain and canopy, not included in height measurement.)



W160AC Pocket Windsor

Pocket

No.	Metals	H	W	E
W160	C,B	18	8	6 1/2

(Candelabra sockets, up to 60W each.)



W110PB Small Wall

No.	Metals	Size	H	W	E	M
W110	C,B	Sm	16 1/2	8 3/4	6	10 1/2
W111	C,B	Lge	21 1/2	11	7 1/2	15

(Candelabra sockets, up to 60W each.)

A Heritage Lanterns Grouping

Our new Adams Hill lights on either side of this unique mirror, also manufactured by Heritage Lanterns. A lovely arrangement for the dining room, a powder room or over a fireplace. See page 13 for details. Please call for details on our mirrors.



Governor's Palace

An outstanding example of early American lighting, this lantern's unique shape and elegant simplicity set it apart from the ordinary. Wider across the front than at the rear, the angled sides lend an unusual sense of depth. Well-suited for use in pairs, the Governor's Palace lantern is equally striking when used alone. The lantern's interior is protected from the weather by a horizontal glass plate (not visible) mounted inside near the top of the fixture. If requested, a standard base single socket candle is available in place of the two candelabra sockets.

The Heritage People

"I enjoy coming to work Monday morning"—and with that comment, a sentiment overwhelmingly shared by other employees at Heritage, the first day of a week begins.



What makes Heritage work so well as a company? It is more than what beautiful lanterns are made of; it goes beyond the precise and the

exquisite, beyond the handcrafted attention to detail. It is the people—these bright, gifted craftspeople, who are gentle and friendly all at once—and their shared attitude that they enjoy their work immensely, even on Monday mornings, that makes Heritage "work."

They come from all walks of life. One was a teacher, another worked in a hospital, yet another was a jeweler. Some set out to be metalsmiths; others were new to the art when they first began at Heritage. They have all gone through the very time-consuming process of learning the metal-smithing skills required to make beautiful Heritage products.

Because of this diversity of background, all brought together and into focus at Heritage, there is an almost "renaissance" quality about the people. Many of them, after years of working in other occupations, feel they have finally found the place that best combines their creative skills, artistic intuition and intelligence.

The Provincials

Channel Construction

The Provincials from Heritage Lanterns are painstakingly put together using channel construction. Similar in appearance to our Salem Lights, the Provincials have a square body.

The elegant channel construction of these lights is further enhanced with the six-pointed star decoration. Each of these delicate stars is meticulously positioned and carefully handpunched.

If you select a bracket or hanging Provincial, you may choose a plain roof or one with an acorn or eagle finial.



Eagle

Acorn



B241PB Medium Bracket

Bracket

No.	Metals	Size	Description	H	W	E	M
B240	C,B	Med	1 Lt	18	7 1/2	10 1/4	11
B241	C,B	Med	2 Lt	18	7 1/2	10 1/4	11
B242	C,B	Lge	2 Lt	23 1/2	9 1/2	12	12

(1 light—standard socket, up to 60W)

(2 lights—candelabra sockets, up to 40W each.)

(Unless otherwise requested, comes with closed bottom for outdoor use.)



C240PB Small Ceiling



H241PC Medium Hanging

Hanging

No.	Metals	Size	Description	H	W
H240	C,B	Sm	1 Lt.	12	6
H241	C,B	Med	2 Lt	14	7 1/2

(Candelabra sockets, up to 60W each.)

(Comes with 12" of chain and canopy, not included in height measurement.)

Ceiling

No.	Metals	Size	Description	H	W
C240	C,B	Sm	1 Lt.	11 3/4	6
C241	C,B	Med	2 Lt	13 3/4	7 1/2

(Sm—1 standard socket up to 60W, or 1 candelabra socket up to 60W, please specify)

(Med—2 candelabra sockets, up to 40W each.)

Jim Light

The size of this delightful light makes it “jim dandy” for those special places in your home. The Jim Light is a reproduction of a ship’s lantern we found several years ago, and while it’s smaller than most lights we offer, we find it’s popular for that reason. Its slender, hinged door makes it a real gem!

No.	Metals	H	W	E	M
W133	C,B	16 1/4	5 1/4	4 1/4	9 1/4

(Standard socket up to 75W.)



B267AC Large Bracket



H265PB Small Hanging

The Williamsburg

The Williamsburg is perhaps the most well known of Colonial lantern designs, and many companies make their own variations based on its style—but few achieve the quality found in this Heritage light.

Explore the features we build into each Williamsburg light: vent holes just like the originals, solid piece bottom construction and heavy protective arches for the glass. In fact, each arch has to be carefully shaped by hand and then fitted to the light!

The glass is available in your choice of seeded or clear. This lantern is also available in the ceiling and post light version; inquire for more details.

No.	Metals	Size	H	W	E	M
B265	C,B	Sm	18 1/2	7	10	12 1/2
B267	C,B	Lge	26	10	13	16
H265*	C,B	Sm	15 3/4	7	—	—
H267*	C,B	Lge	20 1/2	10	—	—

(Sm—standard socket, up to 75W.)

(Lge—standard socket, up to 100W.)

*(Comes with 12" of chain and canopy not included in height measurement.)

We now have six Heritage fixtures in our home. We appreciate every one each time we pass it.

Woodstock, Connecticut



W133PB Jim Light



W120PC Small Wall



W121PB Large Wall

Pocket Light

English citizens once enjoyed the gracious lines of these lanterns, as the originals were used as carriage lights. Considered to be one of the finest Heritage lanterns, these Pocket Lights make an eloquent statement at any entrance.

The carefully proportioned curves at the top and bottom of each light are metal spinnings made by hand. Hand metal spinning is an uncommon talent, and today, such spinnings are rarely found on handcrafted lights.

No.	Metals	Size	H	W	E	M
W120	C,B	Sm	18	7 1/4	6	8 1/2
W121	C,B	Lge	28	10 1/2	7 1/2	14 1/2

(Standard socket, up to 100W.)

(Specify clear or frosted chimney on large size.)

Salem Lights

A gentle word when spoken, “Salem” means land of peace. Many early settlers came to the New World looking for peace and prosperity, and they often named their towns and villages “Salem” to give their hope a concrete form. Our Heritage Salem Lights cast a “harmonious” glow. They share the same elegance of design as the Provincials, but they have a rectangular body. All Salem lights are channel constructed, a technique requiring masterful levels of craftsmanship. Salem Lights are available with a plain roof or with an acorn or eagle finial as decoration (please be sure to specify).



B260 Medium Bracket



B260PB Medium Bracket



B251PB Small with Bottom Bracket



B250PB Small Bracket

No.	Metals	Size	Description	H	W	E	M
B250	C,B	Sm	2 Lt	20 1/2	10	10 1/4	11
B251	C,B	Sm	Bot Brkt	29 1/2	10	10 1/4	11
B260	C,B	Med	4 Lt	27	11	12 1/4	14
B261	C,B	Med	Bot Brkt	36	11	12 1/4	14
B263	C,B	Lge	4 Lt	32 1/2	14 1/2	16 3/4	16

(Candelabra sockets, up to 60W each.)



W130PB Tall



W131PB Short

Ship's Lantern

Our Yankee ancestors were among the most famous in the Colonies for their seafaring abilities. In the days before the Panama and Suez Canals, ships' captains would sail around the world in clipper ships (renowned for their beauty and speed), trading for tea in China or importing the newest fashions from the Continent. The original of this carefully designed lantern burned oil and was used to illuminate the dark passageways of Colonial ships.

The Ship's Lantern is one of our most versatile offerings, appropriate for indoor accents as well as outdoor uses. Note that the glass is authentically channelled on the outside.

*Build me straight, O worthy Master!
Staunch and strong, a goodly vessel.*

The Building of the Ship
Henry Wadsworth Longfellow

Old North Church Lantern

One of the original pair of lanterns used as a signal in the North Church tower on April 18, 1775, is now in the possession of the Antiquarian Society in Concord, Massachusetts.

The story of Paul Revere's famous ride has come largely from his own written account in carefully preserved letters sent to friends and family members. He wrote about the expectation of a move by the British to capture powder stored in Concord, an arrangement of signals from the North Church tower in case the movement started, and his escape by boat to Charlestown where he

waited ready to ride to warn the colonists if need be. After Revere left Boston, an associate secured two lanterns from the church vestry and climbed the tower. When he saw the British troops entering the boats, he hung two lighted lanterns in the window facing the Charlestown shore, according to the prearranged signal of "one if by land, two if by sea."



H135AC Electric

No.	Metals	Size	H	W	E	M
W130	C,B	Tall	21 1/4	6 1/2	5 1/2	12
W131	C,B	Short	13	6 1/2	5 1/2	7 1/2

(Candelabra sockets, up to 60W each.)

My lights arrived last evening...they are so very beautiful. I'm enchanted with them. They complement my old furniture from the 1700s. Thank you for making such beautiful work in these times.

St. Petersburg, Florida

No.	Metals	Description	H	W
H135	C,B	Electric	19	7
H136	C,B	Candle	19	7

(Candelabra sockets, up to 60W.)

Liberty Tree Lantern

The original Liberty Tree Lantern, rich in Colonial history, is part of the collection of the Bostonian Society, Boston, Massachusetts.

The inscription on the bottom of the Bostonian Society's lantern reads: "This lantern was on the northwest bough (opposite Frog Lane) of the Liberty Tree illuminated last night with several hundred lanterns on the arrival of the news of the repeal of the infamous George Grenville Stamp Act," and dated May 20, 1766.

The intricate punched pattern on the upper portion of the lantern provides an interesting effect when illuminated and viewed from above. Handsome in all metals and finishes, it is offered with a choice of clear or seedy glass and a closed or glass bottom. Please specify.

No.	Metals	Size	H	W	D
H385	C,B	Med	23	8 1/4	9 1/2
H386	C,B	Lge	28	11	13

(3 candelabra sockets, up to 60W each.)
(Comes with 12" of chain and canopy, not included in height measurement.)



H385PB Liberty Tree



W126AC Small Wall

Triangle Double Top

Often used to provide light around the barnyard in earlier days, the striking triple roof of this lantern provided excellent weather protection for the oil-burning originals. The glass, available in either seedy or clear, is authentically channelled on the inside.

The Triangle Double Top has two doors so you may mount the fixture anywhere and still have convenient access to the lantern's interior. This is one of the most interesting lights we make; its shape is so unusual, and it looks so different from each perspective!

No.	Metals	Size	H	W	E	M
W126	C,B	Sm	13 1/2	12	7 3/4	8 1/2
W127	C,B	Lge	18 1/2	13 3/4	12	11 1/2

(Sm—sockets, up to 60W each.)
(Lge—standard socket, up to 100W each.)



W127AC Large Wall

Rose of Sharon Light

Rose of Sharon, the floral symbol of persuasion, is the perfectly appropriate name for this 18th century English design. If our “art of persuasion” doesn’t affect you, the beauty of this light will, an outstanding example of Heritage craftsmanship. The gently curved beading and hand-formed scallop at the top are only two of its many exquisitely detailed features. Please specify your choice of clear or frosted chimney.



B289PB Top Bracket

No.	Metals	Size	Description	H	W	E	M
B289	C,B	Lge	Top Brkt	29 3/4	10 1/4	12 1/2	14
B290	C,B	Lge	Low Brkt	28 1/2	10 1/4	12 1/2	14
B291	C,B	Ex Lge	Top Brkt	30	13	15	18

(Standard socket, up to 100W.)

Beauty will frequently gain over what all the arts of fine persuasion has failed to accomplish.

Floral Emblems, published 1825

Versailles Light

The Versailles is an elegantly detailed light for indoor or outdoor use. Its French Provincial influence lends itself particularly well to a more formal setting as an entrance light, or with mirrored back as a wall sconce.



W129PB Medium Wall

No.	Metals	H	W	E	M
W129	C,B	16 1/2	9 3/4	7	11

(Candelabra sockets up to 60W each.)



B290PB Low Bracket

Adams Hill

The Adams Hill Light, with its mirrored back and polished brass socket, is a beautiful indoor light. The pierced brass gallery on its roof and bottom lends a touch of elegance to the graceful lines of this light. It is excellent as a hallway sconce or on either side of a mirror.



W128PC Small Wall

No.	Metals	H	W	E	M
W128	C,B	10 1/2	7	5 1/4	4

(Standard socket, up to 60W.)

(Refer to page 7 for an application using this light.)

Walnut Hill Tavern Light

Walnut Hill, as “ancient” North Yarmouth was commonly referred to, was the crossroads between other nearby settlements, and served as the site for a number of old taverns. In the late 18th and early 19th centuries, men driving cattle and carrying farm goods to market relied on these taverns for their food and lodging. A weary traveler of the times would have undoubtedly been welcomed by the inviting warmth of the original of this handsome light. Usually placed on the table of finer taverns, the lantern was sometimes carried from room to room. Authentic details include a carrying handle, double roof, reflectors and outside channelling for the glass. It’s a difficult light for us to make, but it’s still one of our favorites!

No.	Metals	H	W	E	M
W145	C,B	17	15 1/4	9 3/4	10

(Standard socket, up to 100W)



W145AC Walnut Hill Tavern

*There is a tavern in the town,
And there my true love sits him down
And drinks his wine with laughter and with glee
And never, never thinks of me.*

There is a Tavern in the Town, Anonymous



Constitution Lantern

The Constitution Lantern is an example of the copper battle lanterns used on the frigates of the late eighteenth and early nineteenth centuries. Because fire was always a major concern on these wooden vessels, this rugged well-enclosed lantern was developed. It was fitted with many narrow vertical horn panels and fueled with whale oil.

The portable battle lantern was used extensively on ships such as Old Ironsides during the War of 1812. It served as general illumination on deck areas during nighttime and was the only lantern allowed for use during night combat, when quantities of highly explosive black powder were being used to charge the cannons on the gun and spar decks.

Other lighting on board ship such as that used in the cabins, wardrooms, sickbay and storerooms consisted of fixed oil-fueled lamps with removable chimneys. The ever-present danger of fire, especially during stormy weather, necessitated a strict rule that these lamps must never be left unattended. Failure to extinguish them upon leaving an area resulted in severe punishment. As a result, the same sturdy lantern used for illumination during nighttime battles was often hand-carried to light the way from one area to another.



H390AC Hanging

No.	Metals	Description	H	W	E	M
W390	C,B	Wall mount	21	10 1/4	11	16
H390	C,B	Hanging	21	10 1/4	--	--

(Standard socket, up to 100W.)

(Hanging model comes with 12" of chain and canopy, not included in height measurements.)

(Available in plain or seeded glass. Please specify.)

The Austen Barn Lights

The double-roof design of the Austens belies their origin before the use of electricity. The oil-burning originals, with flames protected by the double roof, were used in England during the mid 1700's. Solidly and beautifully constructed, an Austen will spread an inviting glow by your door.



W139PB Small Wall



W140AC Medium Wall



W141AB Large Wall

No.	Metals	Size	H	W	E	M
W139	C,B	Sm	14 1/4	7 3/4	5 3/4	10 1/4
W140	C,B	Med	16 1/2	10	7 1/4	11 1/2
W141	C,B	Lge	18 1/2	10	7 3/4	12 1/2

(Small and large, standard socket up to 100W.)
(Medium, candelabra sockets up to 60W each.)

Concord Carriage Light

Carriage-making was an important industry in 19th century Yarmouth; in fact, most towns in southern Maine had their own wheelwright shop! The Concord Carriage Light imparts a warmth and elegance unmatched by many lanterns, thanks in part to the soft glow that shines through the filigree band around the roof. For additional weather protection, we position a glass plate (not visible) inside the roof, just below the filigree!



W390AB Wall Mount

No.	Metals	Size	H	W	E	M
W115	C,B	Sm	14	9 1/2	5 1/2	9
W117	C,B	Lge	16 3/4	11 3/4	7 1/2	10 1/2

(Standard socket, up to 75W for small, 100W for large.)
(Specify clear or frosted chimney.)



W117DC Large Wall



HI66VG Medium Hanging

In all my years, I've never seen fixtures as beautifully made and proportioned as these. They put to shame every other fixture we so carefully selected... Even our electrician couldn't stop commenting about how he'd never seen fixtures made like these.

Fishers Hill, Virginia

Cottage Light

With its seedy glass panels, the Cottage Light sheds a special warm glow. It is perfect for a cozy corner, hallway or foyer, and is equally versatile as an exterior light.

Its 18th century styling reminds one of the gaoler's lantern of old England. The Cottage Light takes on an entirely different look when finished in Verdigris, a finish for indoor use only.

All styles come with a removable metal-framed seedy glass bottom. The Cottage Light is also available as a post light, and prices are available on request.

HANGING

No.	Metals	Size	H	W
HI65	C,B	Sm	12 1/2	7
HI66	C,B	Med	17 1/2	9 1/2
HI67	C,B	Lge	20 1/2	11
HI68	C,B	Ex Lge	24 1/2	13

(Sm, Med & Lge, standard socket up to 100W.)

(Ex Lge, 4-light distributor with candelabra sockets up to 60W each.)

(Comes with 12" of chain and canopy, not included in height measurement.)



BI65AC Small Bracket

WI65AC Small Wall

BRACKET MOUNT

No.	Metals	Size	H	W	E	M
BI65	C,B	Sm	16 1/2	7	9	11
BI66	C,B	Med	21 1/2	9 1/2	12	14
BI67	C,B	Lge	26 1/2	11	14	16
BI68	C,B	Ex Lge	30	13	16	18

(Sm, Med & Lge, standard socket up to 100W.)

(Ex Lge, 4-light distributor with candelabra sockets up to 60W each.)

WALL MOUNT

No.	Metals	Size	H	W	E	M
WI65	C,B	Sm	12 1/2	7	7	9
WI66	C,B	Med	16	9 1/2	9 1/2	11
WI67	C,B	Lge	20 1/2	11	11	14
WI68	C,B	Ex Lge	24 1/2	13	13	16

(Sm, Med & Lge, standard socket up to 100W.)

(Ex Lge, 4-light distributor with candelabra sockets up to 60W each.)

Cape Ann Lantern

The Cape Ann Lantern is an adaptation of the English “lanthorn” meaning “lantern of horn.” One of the earliest lanterns imported from England, this candle-burning lantern used a window covering of painstakingly prepared animal horn. A later lanthorn had windows of mica, which was easier to obtain and prepare in small sheets and did not yellow as fast as the horn.

Our Heritage reproduction features the curved glass of the original. Built to last and to accommodate many uses, the bracket version of the Cape Ann is particularly handsome mounted on the side of a 6" x 6" square post.



B281PB Large Bracket

The hanging Cape Ann may be ordered with a top light and/or a glass bottom. A three-light distributor is available for the large hanging model (please inquire about additional charges).



H280PB Small Hanging



B281AB Large Bracket

BRACKET

No.	Metals	Size	H	W	E	M
B280	C,B	Sm	22 1/2	8	11	15 1/2
B281	C,B	Lge	29	10	12	18 1/2

(Standard socket, up to 100W.)

HANGING

No.	Metals	Size	H	W
H280	C,B	Sm	18 1/2	8
H281	C,B	Lge	23 1/2	10

(Standard socket, up to 100W.)

(Comes with 12" of chain and canopy, not included in height measurement.)



H389AB Medium Hanging

The Beacon Hill

Channel Construction

One can imagine Charles Bulfinch, the most famous architect of 18th-century Boston, hanging the original of this stately lantern as he added the final touches to a fashionable Beacon Hill home. Simplicity and graceful curves define this stylish, six-sided reproduction. Made with hand-formed round channel, this lantern creates an unusual interplay of light and shadow in any setting.

No.	Metals	Size	H	W
H388	B,P	Sm	18 1/2	7
H389	B,P	Med	24	9

(Candelabra sockets, up to 60W each.)

(Comes with 12" of chain and canopy, not included in height measurement.)

Globes

In the early 1800's, several factories began producing clear glass. With the availability of whale oil, a clean-burning fuel, and the need by the coming railroads for a sturdy portable lantern, the globe light was developed.

The later addition of a wire cage permitted the use of thinner and lighter-weight glass. This improved design soon became popular for use in the homes and farms throughout the country.

We offer globe lanterns in a variety of handsome styles to bring a page of history and charm to your home.

Round and Onion Clear and Optic Cage or No-Cage



B220PB Small Bracket



ROUND CLEAR GLOBE-BRACKET

No.	Metals	Size	Description	H	W	E	M
B220	C,B	Sm	Top Soc	22 1/2	12	13 1/2	12 1/2
B225	C,B	Med	Top Soc	25 1/2	13 1/2	15	13 1/2
B230	C,B	Lge	Bot Soc	30	16	18	16
B235	C,B	Ex Lge	Bot Soc	34 1/2	18	19 1/2	18

(Sm, Med—standard socket, up to 100W.)

(Lge, Ex Lge—suggest chimney bulb, 75W or 100W.)

(Ex Lge size only—has two horizontal center bands around globe.)

ROUND CLEAR GLOBE-CEILING

No.	Metals	Size	Description	H	W
C220	C,B	Sm	Top Soc	17	12
C225	C,B	Med	Top Soc	19	13 1/2

(Sm, Med—standard socket up to 75W.)

ROUND CLEAR GLOBE-HANGING

No.	Metals	Size	Description	H	W
H220	C,B	Sm	Top Soc	19 1/2	12
H225	C,B	Med	Top Soc	22	13 1/2
H230	C,B	Lge	2 Lt D	24 1/2	16
H235	C,B	Ex Lge	3 Lt D	29	18

(Sm, Med—standard socket, up to 75W.)

(Lge, Ex Lge—candelabra sockets, up to 60W each.)

(Comes with 12" of chain and canopy, not included in height measurement.)

(Ex Lge size only—has two horizontal bands around globe.)

Brooklyn Bracket

As far as we know, there's no other lantern like this one in the entire United States! We felt so fortunate to have located the original 100-year-old glass mold for this teardrop globe...and now, we're having these globes handblown using the original molds! In fact, the glassmaker we use is a company that was in business during the Civil War! Our Brooklyn Bracket is a wonderful reproduction of the originals once used on the cobbled streets of Brooklyn, New York.

...Such a pleasure to deal with you all. You make the most beautiful lights we have ever seen...It's Christmas everyday!

Hancock, New Hampshire



B215PB Brooklyn Bracket (Weathered)

No.	Metals	H	W	E	M
B215	C,B	20 1/2	12 3/4	15	6 1/2



H325AC Medium Hanging

ROUND OPTIC GLOBE-HANGING

No.	Metals	Size	Description	H	W
H320	C,B	Sm	Top Soc	18	12
H325	C,B	Med	Top Soc	20	14
H330	C,B	Lge	Top Soc	23	16

(Sm, Med—standard socket, up to 75W.)
 (Lge—suggest chimney bulb, 75W or 100W.)
 (Comes with 12" of chain and canopy, not included in height measurement.)

ROUND OPTIC GLOBE-BRACKET

No.	Metals	Size	Description	H	W	E	M
B320	C,B	Sm	Top Soc	22 1/2	12	14	13 1/2
B325	C,B	Med	Top Soc	25	14	16	14 1/2
B330	C,B	Lge	Top Soc	28	16	18	15 1/2

(Sm, Med—standard socket, up to 75W.)
 (Lge—suggest chimney bulb, 75W or 100W.)

NOTE: All top socket globes are also available with an open bottom to provide down light if desired.

Caged Clear Onion Globes

The most popular of Heritage lights, the Onion Globe, forms the basis for the Heritage Lanterns hallmark. There are other companies who make a light similar to this, but what a difference! We can proudly say that we've never seen an onion with the loveliness and strength of ours.

The handsome proportions and rugged construction of the original globe lanterns are found in these Heritage reproductions. The versatile uses of the Onion Globe are limitless and permit practical and attractive solutions for areas needing good light.



B202AC Large Bracket

CLEAR ONION GLOBE-BRACKET

No.	Metals	Size	H	W	E	M
B200	C,B,P	Sm	16 1/2	7 1/2	9 1/2	11 1/2
B201	C,B,P	Med	19 1/2	10 3/4	12	11 1/2
B202	C,B,P	Lge	22 1/2	13 1/2	14	13

(Sm—standard socket, up to 60W.)
 (Med—standard socket, up to 75W.)
 (Lge—standard socket, up to 100W.)



B201PB Medium Bracket



H202PB Large Hanging



C201PB Medium Ceiling

CLEAR ONION GLOBE-HANGING

No.	Metals	Size	H	W
H200	C,B,P	Sm	13 3/4	7 1/2
H201	C,B,P	Med	16 1/2	10 3/4
H202	C,B,P	Lge	19	13 1/2

(Sm—standard socket, up to 60W.)
 (Med—standard socket, up to 75W.)
 (Lge—standard socket, up to 100W.)

CLEAR ONION GLOBE-CEILING

No.	Metals	Size	H	W
C200	C,B,P	Sm	12	7 1/2
C201	C,B,P	Med	14 1/2	10 3/4

(Sm—standard socket, up to 60W.)
 (Med—standard socket, up to 75W.)

No-Cage Clear and Optic Onion Globes



B208PB Small Bracket



C208PB Small Ceiling



H208PB Small Hanging

CLEAR ONION GLOBE—CEILING

No.	Metals	Size	H	W
C208	C,B,P	Sm	11 1/4	5
C210	C,B,P	Med	14 1/4	8

(Sm—standard socket in top of light, up to 60W.)
(Med—standard socket in top of light, up to 75W.)

CLEAR ONION GLOBE—HANGING

No.	Metals	Size	H	W
H208	C,B,P	Sm	13 1/4	5
H210	C,B,P	Med	16 1/4	8

(Sm—standard socket in top of light, up to 60W.)
(Med—standard socket in top of light, up to 75W.)

CLEAR ONION GLOBE—BRACKET

No.	Metals	Size	H	W	E	M
B208	C,B,P	Sm	16 1/2	5	8	11 1/2
B210	C,B,P	Med	19 1/2	8	10 1/4	12

(Sm—standard socket in top of light, up to 60W.)
(Med—standard socket in top of light, up to 75W.)

I have in the past few years ordered a number of your lanterns — onion globes, large and small... Thank you for care, for concern, for skill, for a glowing beauty in which I shall delight each time I enter my living room...

Grand Blanc, Michigan



C340AB Medium Ceiling



H340PB Medium Hanging

OPTIC ONION GLOBE—CEILING

No.	Metals	Size	H	W
C340	C,B,P	Med	7 1/2	8

(Med—standard socket in top of light, up to 75W.)

OPTIC ONION GLOBE—HANGING

No.	Metals	Size	H	W
H340	C,B,P	Med	15	8

(Med—standard socket in top of light, up to 75W.)

NOTE: All hanging globe fixtures come with a 12" chain and canopy which is not included in overall height measurement.



B340AC Medium Bracket

OPTIC ONION GLOBE—BRACKET

No.	Metals	Size	H	W	E	M
B340	C,B,P	Med	18	8	11	12 1/2

(Med—standard socket in top of light, up to 75W.)

Sconces

The original meaning of the word “sconce” is an elevated and protected place. The early Colonial sconce was made of tin or wood and held a single candle. It was an improvement over the candlestick in that it raised the candle to a safer place, and most sconces had reflectors, which provided additional light.

In the late 18th century candles became more elaborate and an important part of the ornamentation as well as the illumination of a home. Later, multiple candles were used to provide even more light. Sconces in early America enjoyed positions of prominence. They were frequently used in town halls and public meeting rooms where diffused light was needed.

Each of the sconces we make is available in both electrified and candle versions. An especially attractive approach is the use of our electrified Morelite wax candles (see page 25). As you look at these sconces, remember that each little crimp is made by hand, and that the positioning of each crimp is “by eye.”

Our sconces cover a range of sizes and styles that we have rarely seen, going from the “country” look to more formal Federal and provincial designs, a selection to satisfy any decorating need.

The Eliza Bourne Sconce

Eliza Bourne was the quintessential woman of early 19th century Maine, and true to her spirit, we’ve named one of our new sconces after her. Based on a Federal design, its crimped edges and curved backplate create a genteel, understated look; it strikes a balance between function and formality, much like our “friend” Eliza did.



S535PB Large Electric



S590RP Electric

Priscilla Sconce

And so spoke Priscilla Alden, in one of early Colonial America’s romantic legends. In tribute to Priscilla’s story (and her honesty!) we’ve named one of our new Heritage sconces after her.

The Priscilla Sconce is as lovely, simple and straightforward as its namesake. Large, oval, with hand-crimped “pie-crust” edges (a traditional 18th century motif), the Priscilla has an early-American, country appeal to it. Available in candle and electric versions.

Why don’t you speak for yourself, John?

The Courtship of Miles Standish
Henry Wadsworth Longfellow

No.	Metals	Description	H	W	E
S590	C,B,P	Electric	13 1/2	6	6
S591	C,B,P	Candle	13 1/2	6	6

(Electric—candelabra socket, up to 60W.)

No.	Metals	Description	H	W	E
S530	C,B,P	Sm Electric	13	5 1/4	5 3/4
S531	C,B,P	Sm Candle	13	5 1/4	5 3/4
S535	C,B,P	Lge Electric	13 3/4	5 3/4	5 3/4
S536	C,B,P	Lge Candle	13 3/4	5 3/4	5 3/4

(Electric—candelabra socket, up to 60W.)



Yarmouth Sconce

Named for our hometown of Yarmouth, this unique mirrored sconce is one of our newest designs. This eighteenth century sconce is available with either a gold-veined or plain smoked glass mirror. Please specify. The top of the sconce is tipped outward at a slight angle to allow more light reflection. Because of its size, it is ideal for use in pairs. As with all of our sconces, wiring is concealed.

There are two ways of spreading light: to be the candle or the mirror that reflects it.

Edith Wharton



S550PB Electric
Gold Veined Smoked Glass

S550RP Electric
Plain Smoked Glass

No.	Metals	Description	H	W	E
S550	C,B,P	Electric	14 3/4	4 3/4	5 3/4
S551	C,B,P	Candle	14 3/4	4 3/4	5 3/4

(Electric—candelabra socket, up to 60W.)



S524AB Electric



S520AB Electric

SIMPLE ROUND SCONCE

No.	Metals	Description	H	W	E
S524	C,B,P	Electric	9 1/2	7 1/4	5 3/4
S526	C,B,P	Candle	9 1/2	7 1/4	5 3/4

(Electric—candelabra socket, up to 60W.)

BEADED ROUND SCONCE

No.	Metals	Description	H	W	E
S520	C,B,P	Electric	13	9	7
S522	C,B,P	Candle	13	9	7

(Electric—candelabra socket up to 60W.)



S512PB Electric

SMALL OVAL SCONCE

No.	Metals	Description	H	W	E
S512	C,B,P	Electric	9 1/2	6	5 1/2
S514	C,B,P	Candle	9 1/2	6	5 1/2

(Electric—candelabra socket, up to 60W.)



S540AB Electric
Gold Veined Smoked Glass

Carpenters' Hall Sconce

The original Carpenters' Hall sconces were a set of twelve tin mirror sconces made by a Philadelphia tinsmith. A bill of sale listing the sconces indicates that they were part of the original lighting equipment of Carpenters' Hall when the first Continental Congress met in this historic shrine on September 7, 1774.

The sconce is of unusual design and beauty, made of tin with five pieces of mirror as a reflector. When the candle is lighted you can see in the mirror reflector five lighted candles — a most pleasing effect.

Two sconces remain in the Hall, one on each side of the large doorway to the assembly room.

No.	Metals	Description	H	W	E	M
S540	B,P	Sm Electric	15	6 1/2	6 1/4	3 1/2
S541	B,P	Sm Candle	15	6 1/2	6 1/4	3 1/2
S545	B,P	Lge Electric	19 3/4	8 3/4	6 1/2	5
S546	B,P	Lge Candle	19 3/4	8 3/4	6 1/2	5

(Electric—candelabra sockets, up to 60W each.)



S570PB Double



S580RP Roofed

Simple Sconces

Our most popular sconces include these ever-familiar designs — the single, double and roofed. Their styling fits in a wide range of decors, and they're definitely from early America! Each is available in candle and electric versions.



S560RP 12" Electric



S561RP 10" Candle

SINGLE SCONCE

(Please specify 10", 12" or 14" heights.)

No.	Metals	Description	H	W	E
S560	C,B,P	Electric	—	4	3
S561	C,B,P	Candle	—	4	3

(Electric—candelabra socket, up to 60W.)

DOUBLE SCONCE

No.	Metals	Description	H	W	E
S570	C,B,P	Electric	15	7 1/4	3 1/4
S571	C,B,P	Candle	15	7 1/4	3 1/4

(Electric—candelabra sockets, up to 60W each.)

ROOFED SCONCE

No.	Metals	Description	H	W	E
S580	C,B,P	Electric	14	6	4 1/2
S581	C,B,P	Candle	14	6	4 1/2

(Electric—candelabra sockets, up to 60W each.)



S505PB Oil

The Hamilton Sconce

A reproduction of an 18th-century oil lamp found in an old house in Hamilton, Massachusetts, this sconce will be a versatile addition to your home. It has a carrying handle in back, or if you prefer, you may hang it on the wall. The solid brass burners we use in these are specially imported from England. The electrified version comes with an 8-foot cord and plug.

The Hamilton Sconce may be permanently mounted with a wall bracket, but you must specify this at the time of order (the mounting bracket will be soldered to the light, and mounting hardware will be sent).

No.	Metals	Description	H	W	E
S505	C,B,P	Oil	12	10	7
S507	C,B,P	Electric	12	10	7

(Standard socket, up to 75W.)

The Nottingham Sconce

No.	Metals	Description	H	W	E
S572	C,B,P	Electric	18	5	4 1/4
S573	C,B,P	Candle	18	5	4 1/4

(Electric-candelabra socket, up to 60W.)



S572 AB Electric

Duraglit Metal Polish



An English wadding polish, Duraglit cleans, polishes and preserves our brass. We recommend Duraglit over liquid brass polishes because liquid polishes leave a white residue in the many seams and joints of Heritage lights. Using wadding polish, you may highlight the main surfaces of a Heritage lantern, leaving the crevices and corners to darken naturally.

The Morelite Candle

The Morelite is the most realistic “candle” we’ve found for use with our own electrified indoor lights. Made from only the finest beeswax, the Morelite is a solid candle and not just a sleeve thinly dipped in wax. After the fixture is wired, each candle is carefully hand-dripped over the candle cup for that ultimate touch of realism. The creamy white Morelite uses conventional voltage and accepts regular candelabra base bulbs up to 25 watts. Please specify Morelite candles at the time of order.



Ceiling Lights

At Heritage, we're delighted to be offering you a greater selection of ceiling lights. While modern in function, we've incorporated classic designs and motifs that are in keeping with our other Heritage lights and which provide the decorative, traditional touches many homeowners enjoy. Designed for any room setting, our Heritage ceiling lights work particularly well in hallways, bathrooms, and other small rooms. And all of them are channel constructed! Each Heritage ceiling light casts a unique pattern around itself; the pattern varies with the detailing of the light. The Sunburst creates one pattern, while the filigree of the Tavern Ceiling Light creates another! Heritage ceiling lights are flush-mounted against the ceiling. Many other Heritage lights can also be ceiling hung (with or without chain).



Your lanterns are the loveliest of all we've seen, and we've really researched it!

Sandy, Utah

Tavern Ceiling Light

Channel Construction

The delicate filigree band surrounding the top of this charming hexagonal light will cast a delightful pattern in any room or hallway. Since it is only 5 inches deep, the Tavern Ceiling Light is perfectly suited for smaller spaces such as bathrooms or hallways or in rooms with low ceilings. Like all of our ceiling lights, the Tavern Ceiling Light is channel-constructed (read about channel construction on page 3).



C194PB Large



C192AB Medium

No.	Metals	Size	H	W
C190	C,B	Sm	5 1/4	8
C192	C,B	Med	5 1/4	10
C194	C,B	Lge	5 1/4	12

(2 lights, standard sockets, up to 60W each.)

Sunburst Ceiling Light

We've taken the Sunburst motif, so common among early 19th century antiques, and have made it the central focus of this very practical ceiling light. The Sunburst pattern is handpunched and casts a distinctive pattern on the surrounding ceiling area, while directing the majority of the light downward.

No.	Metals	Size	H	W
C195	C,B	Sm	5 1/4	8
C197	C,B	Med	5 1/4	10
C199	C,B	Lge	5 1/4	12

(2 lights, standard sockets, up to 60W each.)



C195AC Small

*Steadfast, serene, immovable, the same
Year after year, through all the silent night
Burns on forevermore that quenchless flame,
Shines on that inextinguishable light!*

The Lighthouse, Henry Wadsworth Longfellow

Kennebunk Ceiling Lights

Longfellow *could* have been describing our new Kennebunk Lights, among our latest introductions in Heritage's ceiling lights. Ceiling lights are a "mainstay" in lighting in most homes, and these elegant fixtures will definitely add charm and interest.

Our caged Kennebunk light is reminiscent of the Cottage light, with its square, "gridded" cage around seeded glass, and fine antiqued filigree around the top.

If you prefer, we also offer the Kennebunk light without the cage. It is precisely the same in details and dimensions as the caged version.



C185PB Cage



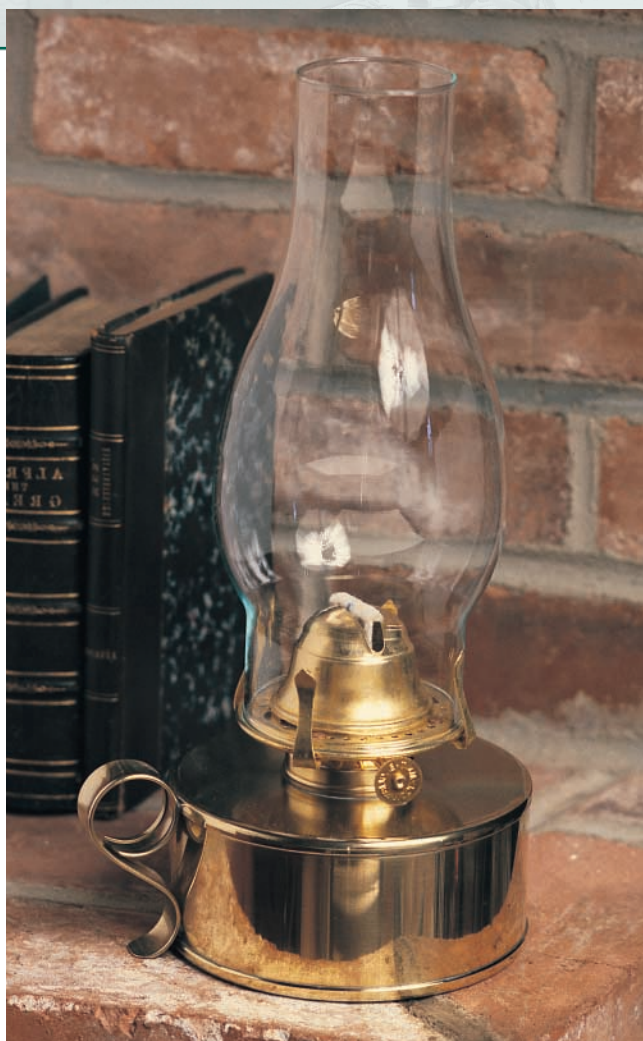
C186RP No Cage

No.	Metals	Description	H	W
C185	C,B,P	Cage	6	9 1/4
C186	C,B,P	No cage	5 1/2	8 1/2

(2 lights, standard sockets, up to 60W each.)

Lamps

“Who will change old lamps for new?” asks one of the age-old figures in *The Arabian Nights*. These “old” lamps from Heritage — each one handmade — bring warmth and cheer with them, which you’ll undoubtedly see as you explore these pages. All our lamps offer you the authenticity of oil or the convenience of electricity — you select at the time of order. You should also be sure to look at our Hamilton Sconce on page 25. Most Heritage customers prefer to use this unusual piece as it was originally — an oil-burning lamp. We think you’ll enjoy one Maine anecdote about Eliza Bourne (for whom we named one of our sconces on page 22) described in *Agreeable Situations*. Known for her frugality, Eliza inadvertently went too far in her insistence that children shouldn’t complain. When her youngsters insisted something was wrong with the coffee one morning, Eliza reproached them for their dissatisfaction. It wasn’t until later she discovered the “coffee” was accidentally made from lampblack! Lampblack was a “byproduct” of the oil burning lamps of the period, which were not known for their clean burning.



*In winter I get up at night
And dress by yellow candlelight.
In summer, quite the other way,
I have to go to bed by day.*

A Child's Garden of Verses, Robert Louis Stevenson

The Mary Light

This beautiful and practical lamp by Heritage will burn for 18 hours with one filling of oil. Especially nice to have when your electricity fails, the Mary Light can be easily carried from room to room since the chimney shelters the flame. This 18th century reproduction is perfect for holiday and party decorations, its soft glow creating a warm and festive atmosphere.

The electrified version of the Mary Light comes with an 8-foot cord and plug.

No.	Metals	Description	H	W
S510	C,B,P	Oil	12	4 ¾
S511	C,B,P	Electric	12	4 ¾

(Electric—standard socket, up to 75W.)

S510 Oil

The Cambridge Lamp

Heritage's new Cambridge lamp is unlike any we've ever offered before! This splendid lamp, with its Victorian appeal, is adapted from a 19th century design of a student's desk lamp; you can almost picture a student working late into the night in his library carrel with the soft stream of light from this lamp.

The Cambridge comes with a standard 10" chimney. When you order the optional white glass shade, your lamp comes with a 14" chimney. The Cambridge is available in oil and electric versions. *In brass only.*

No.	Metals	Description	H	W
TL705	B	Oil w/Shade	22 3/4	12
TL706	B	Electric w/Shade	22 3/4	12
TL707	B	Oil No Shade	18 3/4	6 1/2
TL708	B	Electric No Shade	18 3/4	6 1/2

(White shade only—14" chimney.)
 (No shade lamps come with 10" chimney.)
 (Oil capacity—24 ounces.)



TL705 Oil with Shade



TL707 Oil without Shade



TL715 Oil with Shade

The Amherst Lamp

The Amherst Lamp is a smaller version of our new Cambridge lamp, with some modifications. The "body" of the lamp is tapered towards the base, accommodating its smaller dimensions. Its deep green shade creates a rich, Victorian atmosphere. When ordered without a shade, the Amherst comes with an 8" glass chimney. A 12" chimney is sent if you order the optional green or white shade. Your choice of our oil or electric version. *In brass only.*



TL717 Oil without Shade

No.	Metals	Description	H	W
TL715	B	Oil w/Shade	20 1/2	10
TL716	B	Electric w/Shade	20 1/2	10
TL717	B	Oil No Shade	17	5 3/4
TL718	B	Electric No Shade	17	5 3/4

(Green or white shade—12" chimney.)
 (No shade lamps come with 8 1/2" chimney.)
 (Oil capacity—16 ounces.)

Chandeliers

Wood and tin chandeliers were the unique contribution of early American craftsmen who struggled to create lighting fixtures with native raw materials. That combination of wood and tin, prized for its simplicity, is one of today's classics. The elegance of brass was cherished in the 18th century and could be afforded only by the very wealthy. Few brass chandeliers were made in the early colonies and most of them were imported from the renowned foundries of Holland, Belgium and England.

The quality of workmanship is outstanding; we had looked at many others before deciding on Heritage. We've since shown many friends your catalog and recommend you highly.

Laconia, New Hampshire



L605 6-Arm Electric

Tavern Chandelier

Subtle in line and proportion, this Tavern Chandelier from Heritage incorporates the fluted candle saucers typical of New England styling in the 18th century. On the electrified versions, all wiring is concealed in the arms.

No.	Metals	Description	H	W
L600	C,B,P	5-Arm Electric	15	23
L601	C,B,P	5-Arm Candle	15	23
L605	C,B,P	6-Arm Electric	15	28
L606	C,B,P	6-Arm Candle	15	28

(Electric-candelabra sockets, up to 60W each.)

Ball Chandelier

The slender center and graceful brass arms of this Heritage chandelier capture an elegance not usually seen with this styling. The wooden centers are handfinished by our own craftspeople, and all wiring is hidden within the arms of the electrified version. For those desiring a pewter finish, we provide carefully tin-plated arms.

No.	Metals	Description	H	W
L640	B,P	Electric	17	24 1/2
L641	B,P	Candle	17	24 1/2

(Electric-candelabra sockets, up to 60W each.)



L640 Electric

The Plymouth Lights

We would be remiss if we didn't name one of our new lights the Plymouth Light! The plantation (as early American settlements were called) at Plymouth, Massachusetts, was the first permanent settlement of Europeans in New England. Our Heritage Plymouth Light, based on an early American design, evokes the rustic, primitive lifestyle of our Pilgrim ancestors. We've taken great care to hide the wiring inside the "straps" that make up the light, preserving the integrity of the design. The purely simple lines of the Plymouth lends itself to a variety of interiors. Available in two- and four-light versions, the Plymouth comes with our simply styled "wireless" hanger.

No.	Metals	Description	H	W
H336	C,B	2 Lt Electric	12 1/4	10
H337	C,B	2 Lt Candle	12 1/4	10
H338	C,B	4 Lt Electric	14	10
H339	C,B	4 Lt Candle	14	10

(All lights come with an 11" wireless hanger and canopy, not included in height measurements.)



H338 4-Light Electric



H336 2-Light Electric

*How far that little candle throws his beams!
So shines a good deed in a naughty world.*

The Merchant of Venice, William Shakespeare



L670 6-Arm Electric

Down Light Chandelier

This is one of our most popular and versatile chandeliers, and many Heritage customers select it for its very practical lighting. The center cone conceals a standard bulb socket, permitting you to concentrate light immediately below the fixture. Electrified versions of the Down Light include Heritage's arm-concealed wiring and a three-way switch near the top of the cone. If you specify it at the time of order, you may leave the arms for candles and electrify only the cone.

The chandeliers look as though they've always been here. We are all delighted with them.

Cumberland, Maine

No.	Metals	Description	H	W
L650	C,B,P	4-Arm Electric	9	20
L651	C,B,P	4-Arm Candle	9	20
L660	C,B,P	5-Arm Electric	11	23
L661	C,B,P	5-Arm Candle	11	23
L670	C,B,P	6-Arm Electric	12	25
L671	C,B,P	6-Arm Candle	12	25

(Electric—candelabra sockets, up to 60W each.)
(Standard socket in cone, up to 100W.)

Meeting House Chandelier

This charming chandelier with a definite rural flavor is styled after those typical of New England meeting houses in the late 1700's.

We've spared no effort in the creation of the Meeting House Chandelier, even using hand-hammered nails to attach the arms to the turned wood shaft. On the electrified version, all wiring is concealed in the beaded arms to give you the most authentic appearance possible.

No.	Metals	Description	H	W
L620	C,B,P	Electric	16	27
L621	C,B,P	Candle	16	27

(Electric—candelabra sockets, up to 60W each.)



L620 Electric

NOTE: The hand-turned wood centers of Heritage chandeliers are cherry, mahogany or clear pine stained to a rich medium brown and finished with two durable coats of polyurethane. They are then hand-rubbed to a soft patina. Inquire about special finishes to match your decor.

Hub Chandelier

The hand-turned wooden center and brass arms of this Heritage light capture the spirit of New England lighting in the early 1800's. Its eight graceful arms enclose the wiring in the electrified version to optimize its authentic styling. For those desiring a pewter finish, we provide carefully tin-plated arms.



L630 Electric

No.	Metals	Description	H	W
L630	B,P	Electric	16	23
L631	B,P	Candle	16	23

(Electric-candelabra sockets, up to 60W each.)

Scallop Chandelier

The unique design of the Scallop Chandelier includes the same practical lighting as the Down Light. All wiring is concealed within the beaded arms of the electrified versions, and a three-way switch is included near the cone's top.



L688 5-Arm Electric

No.	Metals	Description	H	W
L680	C,B,P	4-Arm Electric	12	17 1/2
L681	C,B,P	4-Arm Candle	12	17 1/2
L688	C,B,P	5-Arm Electric	13	18 1/2
L689	C,B,P	5-Arm Candle	13	18 1/2

(Electric-candelabra sockets, up to 60 W each.)
(Standard socket in cone, up to 100W.)



Our Heritage

During a span of more than 350 years, the communities comprising North Yarmouth have survived the Indians, the British and have seen its sons march off to a variety of wars.

Indians ravaged the area in 1689, and by most reports, nothing was left standing. It took 24 years, but "The Committee for the Resettlement of North Yarmouth" (formed in Boston!) managed to convince people to return and rebuild.

Town status was officially declared in 1733, and life in the region progressed rapidly until the British Bombardment of Portland (then know as Falmouth) in 1776. The people once again fled, this time for the "back country."

The end of the war and the beginning of the 19th century once again brought prosperity to the area, mostly in the form of a booming lumber industry, ship-building and global shipping from Portland's deep natural harbor.

The Civil War profoundly affected North Yarmouth, as it did every town in America. Letters sent to their families in Maine reveal an interesting mix of the soldiers' reactions to war. Some were philosophical...

"It looks awful wicked to me to see such havoc as this is making. I think the people are wicked, especially the leaders."

And some were definitely of a more practical nature...

"You must not let the cow get on the ice."

In many ways, the Yarmouth community is almost a 350-year-old microcosm of America itself: at times bowed, but never beaten. Always resilient and ready to rebuild.

Post Lights

Post Lights, considered by many to be a modern development in lighting, actually go back several centuries. By 1738, the cobbled streets of London, England, were brightened by more than 15,000 lights. For the rest of the century, this international center of commerce was regaled as the most well-lighted city in the world. While providing light for 18th-century London, the post lamps weren't known for convenience. A watchman had to fill the font of each light with oil, lay a wick in it and then light it. The watchman would return before dawn to snuff the light, trim the wick and clean the globe. Don't forget — there were 15,000 of them! Benjamin Franklin, always the statesman-inventor, was so impressed with the concept of London's street lighting that he installed similar globe lighting in Philadelphia in 1751.

The center of Colonial government, Philadelphia enjoyed the first street lighting system in America. At Heritage Lanterns, we're very proud of our wide selection of styles and sizes in Post Lights. We know you will be pleased as well.



Eight years ago we built a house here in New London...the crowning glory of our charming house is the large globe Heritage Lantern by the front door...

New London, New Hampshire

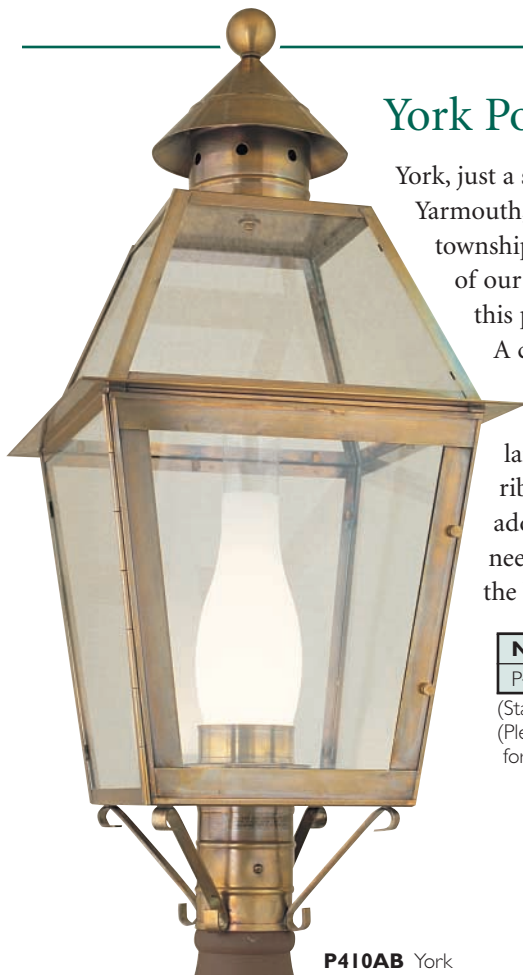
Globe Post

The Globe Post from Heritage embodies the early 18th-century styling of London's first street lights. The round glass globe, protected by a rugged wire "cage," is its particularly distinguishing feature.

No.	Metals	Size	H	W
P440	C,B	Lge	27 1/2	16
P442	C,B	Ex Lge	32	18

(Standard socket—Lge chimney bulb suggested, 75 or 100W.)
(Ex Lge size only—has two horizontal bands around globe.)

P442PB Extra Large



York Post

York, just a stone's throw from Yarmouth, is one of the oldest townships in Maine. In honor of our "neighbor" we've named this post lamp "The York."

A combination of traditional styling and clean lines defines this handsome lamp. The simple ribbing on the crown adds just the touch needed to complement the basic fixture.

No.	Metals	H	W
P410	C,B	31	14

(Standard socket, up to 150W.)
(Please specify 3" or 4" dia. opening for post.)

P410AB York



P410AC (Aged) York

Marston Post

Heritage's new Marston Post has the same handsome, heroic character of the famous Yarmouth Ships' captain it was named after! The new Marston Post is similar to the Provincial, but has a solid top, with decorative oval holes around the cupola. Like every town in America, North Yarmouth has its own heroes. Levi Marston, born in North Yarmouth in 1816, went to sea as a boy of fourteen. Starting out as a lowly galley boy, he learned his seafaring skills over the course of years, apprenticing himself as a seaman, a first mate, and finally ending up with his own command.

In November of 1851, during a wicked storm on a trans-Atlantic voyage from Bordeaux to New York, Captain Marston encountered the English ship *The Unicorn*, disabled and sinking fast. In high, rough seas Captain Marston was able to save over 300 passengers from the sinking vessel, safely transporting them to their New York destination.

For his act of bravery and heroism, Levi Marston was decorated by Queen Victoria!

No.	Metals	Size	Description	H	W
P475	C,B	Sm	2 Lt	17 3/4	10
P476	C,B	Lge	4 Lt	24 1/2	11

(Candelabra sockets, up to 60W each.)



P476AC Large 4-Light

The Windsor Post

Channel Construction

Companion lights to our Windsor Lanterns, our striking Windsor Posts will be a handsome and noticed addition to any exterior environment.

The Windsor, with its durable channel construction, reflects an elegance and grace rarely seen in today's world.

The post light arrived today and words can't express my pleasure at its beauty, the fine workmanship, and the extreme care used in packing. It is a thing of beauty.

Rogers, Arkansas



P451PB Medium



P452AC Large

No.	Metals	Size	H	W
P450	C,B	Sm	25	12 1/2
P451	C,B	Med	28 1/2	14
P452*	C,B	Lge	43 1/2	18 1/2

(All sizes have 4 lights, candelabra sockets, up to 60W each.)

*(Includes brass cradle crafted especially for this light.)



P402AB Medium

The Pemaquid Post

*The rocky ledge runs far into the sea,
and on its outer point, some miles away,
The lighthouse lifts its massive masonry,
A pillar of fire by night, of cloud by day.*

*Steadfast, serene, immovable, the same
Year after year, through all the silent night
Burns on forevermore that quenchless flame,
Shines on that inextinguishable light!*

Henry Wadsworth Longfellow

No.	Metals	Size	H	W
P402	C,B	Med	27	15

(Standard socket, up to 100W.)

Boston Post

This post light, which was designed and patented in 1865 by Jonathan Biggs, a Boston lampmaker, has become the classic post light for street lighting use. Literally hundreds of them can be found today adorning the streets of Boston's Back Bay and Beacon Hill sections, in their original gas light application, and hundreds more in Boston's North End in the more modern electrified version.

This light has survived as primary street lighting because of its attractive and durable design, combining the best points of all lanterns found in this period, and with the novel and necessary addition of a steel support cradle, without which it would never have withstood New England's winds and snowstorms.



P405AC Medium



P405AC Medium



P400PB Large

No.	Metals	Size	Description	H	W
P404	C,B	Sm	W/O Cradle	30	12
P405	C,B	Med	W/O Cradle	39	13
P406	C,B	Lge	With Cradle	44 1/2	14
CR75	Iron Cradle*				

(Standard socket, up to 150W.) *(Cradle optional for P405.) Center panel is available in plain glass or amber seedy glass.

We now have six Heritage fixtures in our home. We appreciate every one each time we pass it.

Woodstock, Connecticut

Cape Ann Post

The forerunner of our Cape Ann Lights was the primitive English "lanthorn" we describe on page 17. The seedy glass of this ruggedly-built post version sheds a warm and inviting light all year round.

No.	Metals	Size	H	W
P400	C,B	Lge	27	10

(Standard socket, up to 100W.)
(Please specify 3" or 4" dia. opening for post.)



Made For You

When people stop by our showroom in Yarmouth, most express surprise to find that Heritage lights are really made right here. No imports. No farmed-out manufacturing. Customers can take just a few steps and actually watch Heritage lights being made.

That element of surprise is further enhanced when visitors discover there is no "production line" at Heritage: one craftsman completely builds one light.

At Heritage, the individual sense of pride is strong. That fact is perhaps best reflected by a card that accompanies each Heritage light — a card signed by the craftsman who created that particular light. In talking about how she felt about each lantern that is shipped, one employee once commented with pride, "It's almost as if your name is on the line."

In a world of advertising and marketing, where superlative phrases are recited with almost reckless abandon, it's difficult to convey a story like that of Heritage Lanterns and its people. The most meaningful thing we can do is to suggest that you either visit us and see for yourself or take advantage of our 30-day guarantee — if you don't agree that Heritage lights are the finest anywhere, return them within 30 days. It's that simple.



P460AB Large

Note: This lantern is suitable for use with a natural gas mantle. Please request quote for conversion cost in your area.

English Street Light

The advent of the gas-burning English Street Light around 1850 represented a significant step forward in city lighting technology. Prior to its introduction, street lighting was accomplished with kerosene-fueled post lights requiring considerable maintenance.

Those were the days when the “little old lamplighter” made his tour at dusk, individually lighting each lamp and again extinguishing each lamp at daybreak. Daylight hours were spent filling the fonts with kerosene, trimming wicks, and the ever-present task of cleaning the soot from the lamp’s glass panels. Kerosene, unlike gas, was not a clean-burning fuel.

The key that permitted replacing kerosene with gas-burning street lights was the progress (though still primitive by today’s standards) in producing and transmitting natural gas from its source to the cities. These extremely reliable and relatively maintenance-free lights illuminated English cities for over half a century until electrical lighting became practical.



No.	Metals	Size	H	W
P460	C,B	Lge	25 1/2	18 1/2

(Standard base socket up to 150W.)
(Candelabra sockets up to 60W.)

Description	H	W	D
12" Pedestal	12	12 1/2	12 1/2
18" Pedestal	18	12 1/2	12 1/2

(Mounting holes 10" across diagonals.)



W175AB

Garage Light

This unusual light was designed by us for the many customers who have asked for a more traditional garage light. The decorative beading we’ve incorporated along the front and sides of this practical light make it an excellent choice for a wide range of uses. This is an enclosed light with a frosted or clear glass bottom door for weather protection. Please specify.

No.	Metals	H	W	E	M
W175	C,B	5	17	7	3

(2 standard sockets, up to 75W each.)

Lancaster Light

The Lancaster Post Lantern is the only post-mounted fixture with a double top, a feature developed in the 1880’s to protect the oil flame from being extinguished during stormy weather. It has simple rugged lines with protective metal crossbars and is suitable for any post application.



P435AB Large

No.	Metals	Size	H	W
P434	C,B	Med	22 1/2	8 1/4
P435	C,B	Lge	27 1/2	10

(Standard socket, up to 100W.)

Rose of Sharon Post

The Rose of Sharon Post is adapted from our classically styled Rose of Sharon Light and features the same gently curved beading and hand-formed scallop. The Rose of Sharon is an inviting light for any home.

No.	Metals	Size	H	W
P415	C,B	Med	27 1/2	10 1/4
P417	C,B	Lge	33	12

(Standard socket, up to 100W.)
(Please specify 3" or 4" dia. opening for post.)

I am familiar with your products and find them to be a source of tremendous pleasure. A lantern I purchased from you and gave to my Aunt never ceases to impress me when I drive up to her home. It gets even more beautiful as it weathers.

Chicago, Illinois



P417AC (Aged) Large

Provincial Post

Channel Construction

The classic styling of our ever-popular Provincial Lanterns is incorporated in this striking post light. You may choose either an acorn or eagle finial for the roof (please specify).



P425AB Medium 4-Light



P421AC Small 2-Light

No.	Metals	Size	Description	H	W
P420	C,B	Sm	1 Lt	17 3/4	10
P421	C,B	Sm	2 Lt	17 3/4	10
P424	C,B	Med	Chimney	24 1/2	11
P425	C,B	Med	4 Lt	24 1/2	11
P430	C,B	Lge	Chimney	29	14 1/2
P431	C,B	Lge	4 Lt	29	14 1/2

(1 light, chimney—standard socket, up to 100W.)
(2 light, 4 light—candelabra sockets, up to 60W each.)
(Specify clear or frosted chimney on chimney model.)

Heritage Cedar Post

Our cedar post, grown and shaped in the State of Maine, weathers to a soft silver grey. The 10-foot post is drilled through the center for the electrical wiring and has a 3-inch O.D. top fitter, and a wire exit hole on the side (four feet from the bottom). Because it is natural wood, the post will crack due to the expansion and contraction that occurs with temperature and humidity changes. Most Heritage customers enjoy this naturally aged look. However, the cedar post is equally attractive stained or painted. We regret that our cedar post is not returnable.



Architects & Designers

Lighting tailored for your projects!

While some projects require only simple modifications to products in our standard line, other projects call for creating designs from “the ground up.” If you look closely at some of the lights in our catalog, you’ll see they can be modified to achieve totally different looks. In fact, the Verdigris finish on our Cottage Light was originally created at the request of an architect. It turned out so beautifully that we’ve added it to the regular Heritage line! We’re anxious to work with you on any size project, creating styles that are informal, traditional, and even contemporary. Heritage Lanterns is uniquely qualified to create your custom lighting.



Our new Heritage showroom on Fortune Drive, Billerica, MA, four miles from the Burlington Mall. Call and schedule a visit: **(508) 663-0290** or **(800) 518-1776**.

The Cottage Collection

"Keep nothing you do not know to be useful or believe to be beautiful," said William Morris, the 19th-century English founder of the Arts and Crafts Movement. In keeping with William Morris' philosophy, The Cottage Collection is an intriguing selection of lanterns adapted from Arts and Craft designs. This 19th-century movement attracted many followers, including such well-known American designers as Frank Lloyd Wright and Gustav Stickley. All were drawn together by a collective reaction against the elaborate excesses of the Victorian era and the mass-produced decorative art of the Industrial Revolution. Yet, their collective reaction resulted in artistic forms that spanned a diversity of cultures and styles—from England to Asia, from ornate Gothic to simple Shaker. The common thread among these artisans was the conviction that hand-crafted products were of superior quality. At Heritage, we share the same conviction—and every light is made by hand. The Cottage Collection adds a unique dimension to Heritage Lanterns, and we think you'll find the poised, timeless quality of these lanterns appropriate for any use. Available in Solid Copper with Antique, Dark Antique or Verdigris finish.



H805VG Eye of Heaven, **H-6 1/2" W-11"**

Eye of Heaven Lantern

The Asian influence common to so many Arts and Crafts designs has been superbly captured in the Eye of Heaven Lantern. The subdued beauty in its lines and proportions is reminiscent of the tranquil ambiance of a Japanese temple. Recreate that serenity with this hanging lantern — it's ideal for a small dining area or hallway, and is truly elegant outdoors.



P815AC Linden Lantern, **H-11 1/2" W-7 1/4"**

Linden Landscape Lantern

With its stained glass look, the Linden Lantern is just as lovely in daylight as it is at dusk. This post light would perfectly complement a garden path, an entryway, or a variety of landscape settings. It's available with the eastern band design (shown) or western band (see our Epping Forest Lantern).

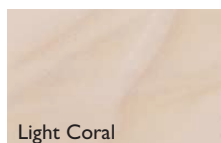


H810AC Epping Forest, **H-9 1/2" W-7 1/4"**

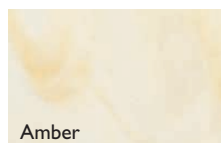
Epping Forest Lantern

Epping Forest was the birthplace of William Morris, the English founder of the Arts and Crafts Movement. Morris would appreciate the bold, distinct styling of this lantern. The Epping Forest is available with the western bank design (shown) or eastern bank (see our Linden Landscape Lantern.)

Glass Colors (unlit)



Light Coral



Amber



Light Jade



Dark Jade

**HERITAGE
LANTERNS**

800-544-6070 In Maine: 207-846-3911



*HERITAGE
LANTERNS*

70-A Main Street
Yarmouth, Maine 04096