



NIGHT IMPRESSIONS

OUTDOOR FIRE AND WATER PRODUCTS

Packages | Inserts | Bowls | Burners | Accessories



Hearth Products Controls

WHY HPC

Building on our legacy of advanced safety technology, Hearth Products Controls Company (HPC) has become the recognized leader in fire pit and water feature innovation. Our outdoor line, introduced in 2003, now includes custom and off-the-shelf, fully assembled fire and water creations for commercial and residential applications that are as visually spectacular as they are scientifically sound. Forty years in the business have taught us that quality components are critical to safer performance, both indoors and out.

“When you choose HPC, you not only benefit from the most innovative and reliable products on the market, you gain the peace of mind that comes from having a support team with over 40 years in the industry.”

– Greg Steck
President, HPC

Our dealers and distributors can rely on us to provide the following:

- Industry-leading, innovative fire ring technology, including Interlink Burners (patent pending) and our patented Penta Burners
- Design and build capability for custom fire pit inserts as well as manifolds and burners
- The broadest product line, including inserts, burners, bowls, covers, keys, enclosures, and torches – complete packages, as well as products and accessories
- The most useful and easy-to-install kits in the industry
- Hands-on customer service, training and education, including NFI-certified technical support
- The highest quality and safety

WHY HPC – IN BRIEF

HPC ADVANTAGES

40 years in the industry

Commercial grade quality

Longest warranty on most products

Over 300 CSA-certified products

Next-day shipping

NFI-certified technicians

Custom design capability

300 CSA CERTIFIED PRODUCTS

Product safety has always been, and will remain, our top priority. That’s why we offer Canadian Standards Association (CSA) Group certification on more than 300 models – more than any other fire pit manufacturer in the industry.



While there are other certifying bodies for gas fire pits, the CSA Group has been recognized as the worldwide leader in standards development and product certification for more than 95 years, writing both the U.S. and Canadian gas standards. Our close relationship with them gives us direct access to their technical expertise, ensuring HPC certified products meet the latest safety requirements. Meeting these standards – as we do for all Match-Lit, Spark/Flame Sensing and Electronic Ignition models – offers you and your customers the greatest peace of mind possible.



For detailed product information,
go to www.hpcfire.com.

FIRE



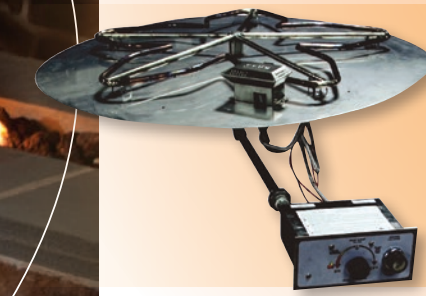
FLAME CONTROL TECHNOLOGY

HPC offers tremendous flexibility in flame control technology.



MATCH-LIT

for those who prefer the simplicity of manual technology. CSA certified.



PUSH-BUTTON SPARK/ FLAME SENSING

for fire pits without electricity. Includes a manual spark igniter and the technology to turn the gas off should the flame blow out. CSA certified.



ELECTRONIC IGNITION

CSA certified hot wire ignition operated remotely via a wall switch, remote control unit, or timer.

CSA CERTIFIED!

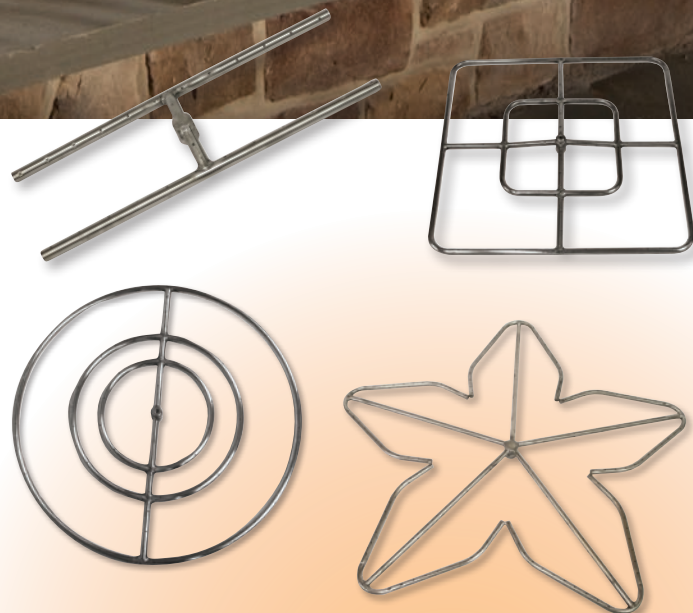
FIRE PIT INSERTS AND FIRE RINGS

HPC is the proven leader in outdoor fire technology with a complete selection of CSA certified inserts in assorted sizes and shapes ranging from 36" and 42" square and our new 54" round inserts to Penta Burner, H-Burner and linear designs. We are the only manufacturer to offer this wide selection in three CSA certified technologies: Match-Lit, Spark/Flame Sensing and Remote Electronic Ignition.

All inserts include burner, pan and related electronics.

Our Fire Rings and Burners are available in round, square, or rectangular styles. In standard or high capacity flow, they have staggered burner ports for a better flame pattern and greater visual presence, as well as a raised hub to reduce the risk of water in the valve or gas line. Plus optional Access Panels make lighting easy for Match-Lit and FPPK model fire pits.

**CERTIFIED INSERTS
ARE FULLY
ASSEMBLED AND
100% BURN TESTED!**



36" Square



42" Square



54" Round
The only CSA certified insert at this size!

NEW! INTERLINK BURNER

The new Interlink Burner System offers improved performance, reliability and project flexibility compared to others on the market. Available in all three flame technologies in sizes from 25" up to 121"!

- Patent-pending stainless steel pan comes in three sections on 37" and larger models – center and two extensions, allowing for easier removal if needed. For improved strength the center section has a welded nipple for gas transfer. All sizes are 8" wide and 1.5" deep to contain the media.
- T-Burner offers raised hub design to reduce risk of water in the valve train. Burner holes are staggered to give the best flame pattern at low gas consumption.



Interlink Burner System

For detailed product information, go to www.hpcfire.com.

FIRE



CSA CERTIFIED!

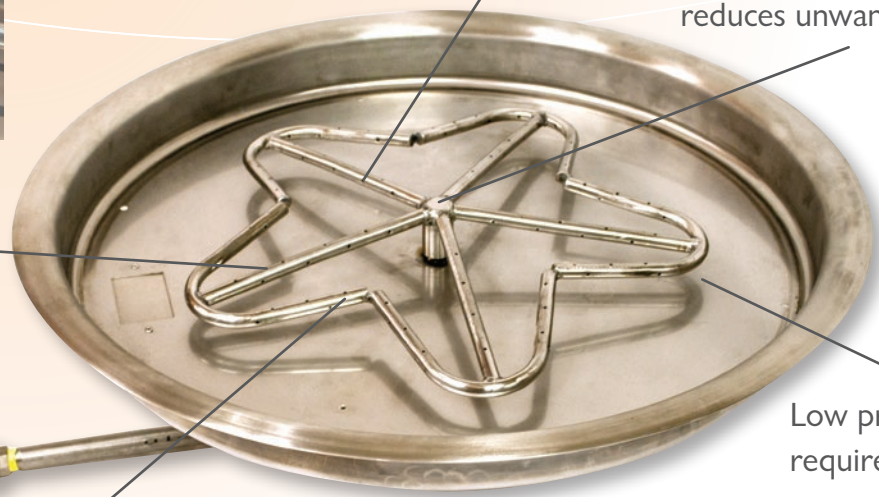
PATENTED PENTA BURNERS



Burner holes at 9, 12 and 3 o'clock – give NO distinct burner pattern on low flame setting

Campfire effect – taller center flame

Innovative raised hub design – reduces unwanted water



Low profile design requires less media

Uses less fuel to attain same flame height as fire ring



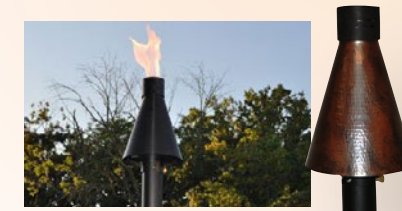
MATCH-LIT KITS

For LP and NG applications. Includes fire ring, valve and key, flange, fittings, and lava rock.



COPPER FIRE BOWLS

Our Copper Fire Bowls offer a beautiful, oil rubbed, hammered or smooth finish. No two are the same! Assorted sizes and shapes. Available in CSA certified Remote Electronic Ignition or Match-Lit with built-in access door for easy lighting.



GET THAT RESORT FEELING WITH TK TORCHES

Robust, reliable and built to last, our TK Torches will turn off the gas if no flame is present. Available with Remote Electronic or Match-Lit Ignition.

- Built for Natural Gas or LP
- Kano tops available in 2 colors – black or hammered copper
- Available Head Only assembly for column mounting



Built-in access door offers safe, easy, lighting

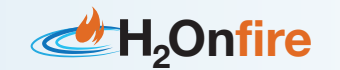
For detailed product information, go to www.hpcf.com.

FIRE / WATER



OUR FIRE AND WATER INNOVATIONS:

Evolution 360 • H2OnFire



Perfect for any residential or commercial setting, these new innovations combine fire and water in intriguing ways for unforgettable impact. Evolution 360 adds the sound of soothing water and beautiful blue LED lights to the warmth and romance of fire. H2OnFire uses patent-pending technology to feature flames literally dancing on top of water. For more information on these one-of-a-kind innovations, go to hpcfire.com.



TWO NEW UNFINISHED ENCLOSURE PACKAGES

Pedestal Enclosure for Copper Bowls

Combines our popular Copper Bowls (four styles, sold separately) with an auto-refill, self-contained water collection system for patio installations. No pool needed! Package includes unfinished enclosure, water collection basin, pump, hose and fittings. Pedestal fits any bowl style; Electronic or Match-Lit technologies.

Linear Enclosure for Interlink Fire Pit

Comes with a 24" LED lit water scupper, auto-refill, self-contained water collection system and the Interlink 37" Burner, either Electronic or Match-Lit. Includes water collection basin, pump, hose and fittings.



New! Copper Fire and Water Package



New! Linear Fire and Water Package

COPPER FIRE AND WATER BOWLS

Ideal for poolside installations, our Copper Fire and Water Bowls come with a beautiful, oil rubbed, hammered or smooth finish. No two are the same! Assorted sizes and shapes. CSA certified Match-Lit or Remote Electronic Ignition.



Built-in access door offers safe, easy, lighting

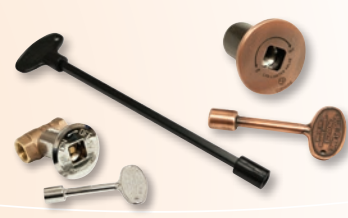
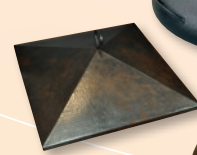
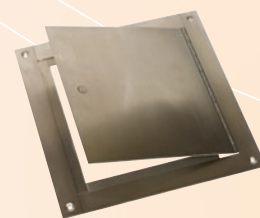


NEW MODULAR ENCLOSURE FOR WATER FEATURE INSERTS

Constructed of lightweight aluminum, our modular enclosure comes in three sections. Features a beautiful, powder-coated finish with an outside dimension of 74". Just set up the enclosure around the 360 assembly and use the leveling feet to adjust. Includes a lockable access door for added safety – absolutely no construction needed!

For detailed product information, go to www.hpcfire.com.

ACCESSORIES



ACCESS DOORS

Recessed or surface mount Access Doors provide easy access for Match-Lit and other manual systems to simplify installation, overcoming hard pipe obstacles. Plus they allow easy access for lighting and service.

COVERS

- Hammered, oil-rubbed copper lids in four sizes and shapes for use with our copper bowl series or to complement a stone fire pit.
- Lightweight, powder-coated covers in black or copper vein color offer shallow depth for a clean, low profile look.

DECORATIVE KEY VALVES

Angled and straight styles in standard and high capacity for gas shutoff of 400k BTU or less.

STAINLESS STEEL FLEX LINES

The widest selection for outdoor gas fire pits. Available in low, standard, high and ultra-high capacities in lengths up to 48".



OUTDOOR AUTOMATIC SHUTOFF TIMERS

Assorted styles and time ranges available.

MORE MEDIA CHOICES

Our beautiful decorative accessories add the warmth – and the efficiency – in multiple ways.

Outdoor logs fit linear or rectangular H-Burner fire pits. Includes two new styles – Linear Birch in white, gray and tan, and Western Pine!



Linear Birch



Western Pine



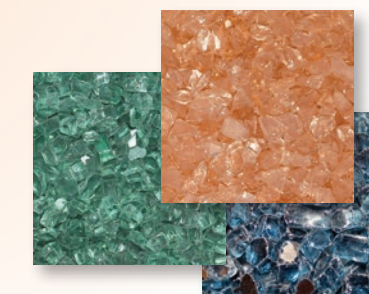
Lava rocks provide a base that increases combustion efficiency.



Rolled lava stone provides a smooth finish.



Lightweight black and multicolor river rocks withstand outdoor elements beautifully.



Twenty-eight colors of decorative fire pit glass add the extraordinary.

For detailed product information, go to www.hpcfire.com.



DEALER SHOWROOM MERCHANDISING SOLUTIONS



Front

Back

KIOSK

High impact P-O-S display measures 3' w x 7' h. Includes powder coated Kiosk, 5 burners, laminated selection guide and take-home brochures.



BANNER

48" w x 32" h

DISPLAY STANDS



25" Round



30" w x 12" h
Rectangle



36" Linear



Distributed by:



Hearth Products Controls

For detailed product information,
go to www.hpcfire.com.