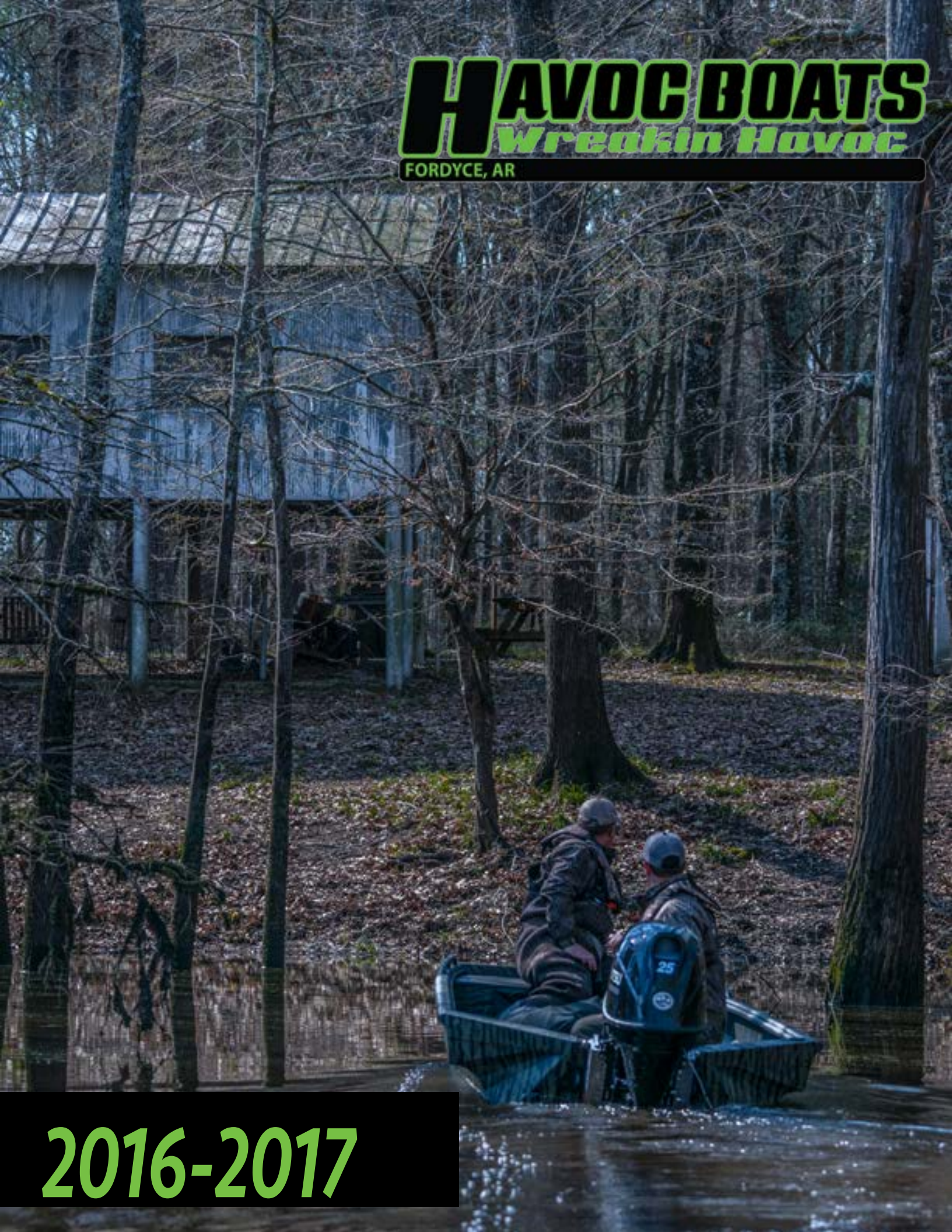


HAVOC BOATS

Wreakin Havoc
FORDYCE, AR



2016-2017



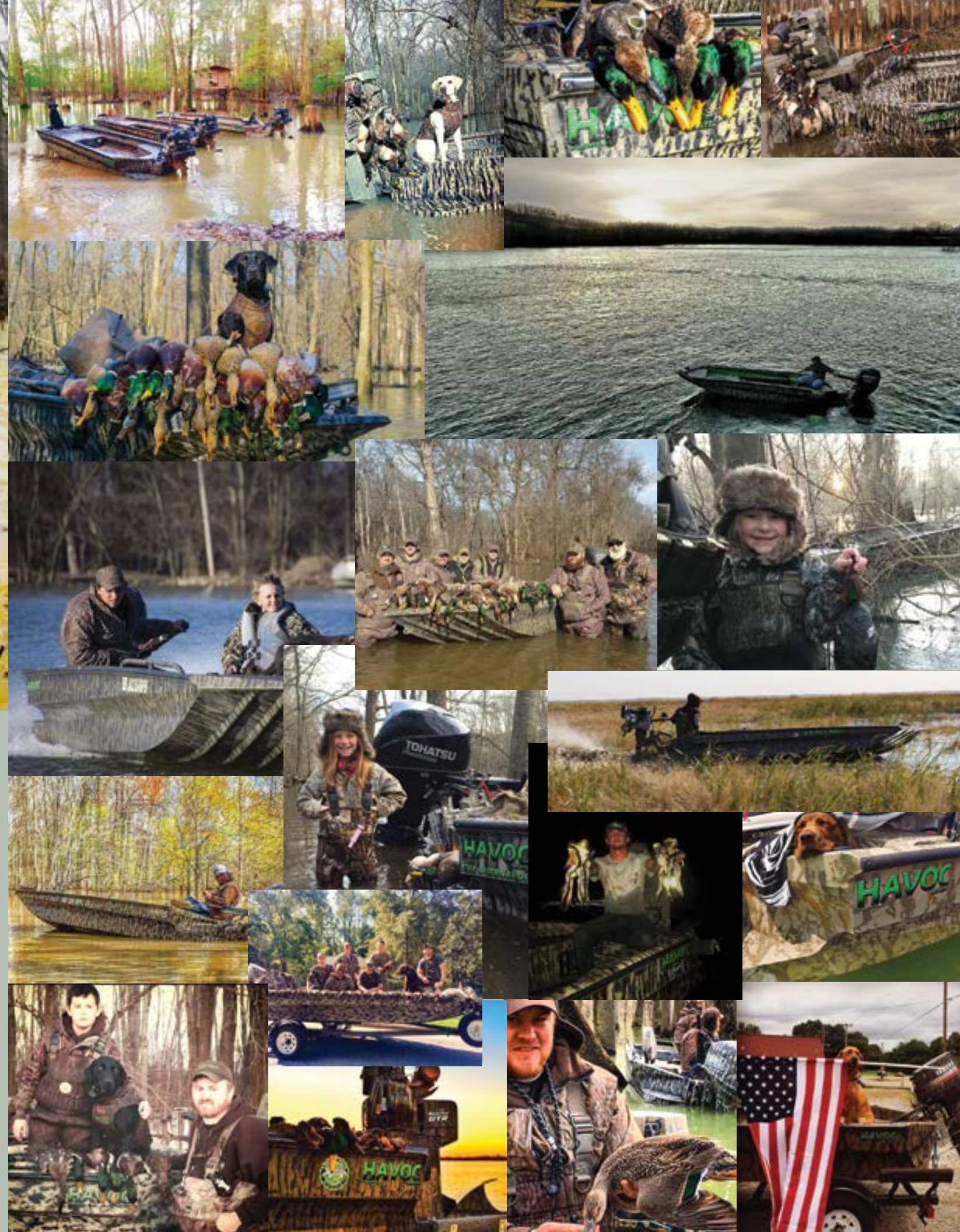
Aluminum jon boats have been out for years. Over the last 20 years, We've built our share of them. With Havoc Boats, we set out to create the ideal boat.

We've done that by listening to what our customers wanted, hiring the best people and investing in them like never before. We aren't just building boats based on old worn out designs, but applying what our customers demanded into the performance of our boats.

What did they want? They told us they wanted an agile boat that rides comfortably and gets them out and back, day in and day out. They wanted a year-round boat not just another jon boat. Our boats aren't just duck boats either. For many of our customers, they are their year round boat. #wreakinhavoc is as much fun during a 60 day duck season, spring fishing season, or hanging out on the sand bars all summer long.

After 20 years we hope you like our boats. We want to earn your business.

Jim Scott



When it comes to duck hunting, Arkansas is as legendary as the hunters who pursue the sport. These sportsmen are consumed by the competitiveness of the chase and the thrill of the hunt. They demand performance both in season and off season.

Havoc Boats is leading a movement that may forever change the boating industry. With the help of our customers, we've built upon the passion for boating that extends beyond duck season. Our boats let you keep [#wreakinhavoc](#) all year long. Our customers know that the best times aren't counted by the number of ducks shot or the number of fish caught. The best times are the experience shared among friends and the memories that will last forever.

Follow Us Online



@havochoats



Facebook Photo Contest Winner: Derek Stubbs

BUILT TO PERFORM

Are you tired of that old jon boat that skips in the turns? Does your wife hate to be seen in your old beat up duck boat? Tired of watching the other guys wreakin havoc without you? Get out of the dark ages of aluminum boats and jump into the fray with the most advanced boats on the market.

Not only do Havoc Boats offer what every hunter and fisherman needs (reliability and performance), but we follow it up with great customer service and an warranty you can depend on. Havoc boats are covered by a limited lifetime warranty against all manufacturer defects. What's more is we have a dealer network that stands behind the product and has the same adrenaline fueled passion to perform that you do.

You need a boat that will perform to your standards all winter with mallards in your face and Sunday fundays with the crew all summer long. No matter what gets you outdoors, we are passionate about making our customers the best quality boat for all your adventures, hunts and family vacations. We are happy to stand behind our boats. Drop by your local dealer or give us a call to find out what #wreakinhavoc is all about and learn why Havoc Boats are taking over the swamps and river bottoms all over the country!

NEW FOR 2017

HAVOC BOATS
INSURRECTION
LONGITUDINAL RIB



If the bottom of your boat flexes at speed, performance is lost. Prevent the insurgency and wreak havoc with the all new Insurrection Longitudinal rib. This new design reduces weight, and adds increased strength for added stiffness at the higher speeds of today's duck boats. This produces a boat that skims the surface and resists deflection. Fight the battle for performance gains with the Insurrection Longitudinal Rib. Available on specific models.



Find a dealer near you at www.havocboats.com



Duck Boats

Havoc duck boats are built with specific features for today's avid duck hunter in mind. Duck hunters demand performance and reliability. When you plan your whole year's vacation around duck season, you can understand why.

One feature unique to all Havoc Boats is the inverted sidewall. This design characteristic helps when running the boat in green timber and cypress sloughs. When the boat contacts a tree or cypress tree, it allows the boat to contact the heavy duty gunnel rail before it hits the bottom of the boat.

With an eight degree v-hull and stern chine, Havoc Boats will turn on a dime. All of these features translate into a boat that is flat out fast and agile.



Shown w/ High Deck Top Hatch, Trolling motor, Mount, Rod box, Rear Deck Live well, Seat Bases



Standard Features

- 8 Degree, v-hull & hull
- 5052 Alloy .100 Ga hull
- Cobblestone base coat
- Center keel saver
- T-lock gunnel rails
- All aluminum transom
- Diamond plate floor
- 6063 Longitudinal ribs
- Navigation lights
- 50" High-deck/with under storage

Model	1444 DB	1544 DB	1550 DB	1553 DB	1556 DB	1650 DB	1656 DB	1753 DB	1756 DB	1860 DB
Length	14	15	15 Ft	15.5 Ft	15 Ft	16 Ft	16 Ft	17 Ft	17 Ft	18 Ft
Bottom	44	44	50 in.	53 in.	56 in.	50 in.	56 in.	53 in.	56 in.	60 in.
Beam	62	62	63	65	68	63	68	65	68	84
Sides	21	21	21	21	21	21	21	21	21	21
Transom	15-20	15-20	15-20	15-20	15-20	15-20	15-20	15-20	15-20	15-20
Max Wt./per/mo/gr	970	970	950	1010	1100	1100	1100	1150	1150	1460
Total Wt./Cap	3/620	3/620	4/600	4/700	4/750	4/700	4/720	4/750	4/800	6/814
Hull Thickness	.100	.100	.100	.100	.100	.100	.100	.100	.100	.100
Max HP	25	25	40	40	50	40	50	50	50	75

Clothing by



See Pages 25-31 and your dealer for additional options

Raptor Duck Boat

The RDB Series of boats are our race inspired duck boats. When Duck season ends and off season adrenaline fueled performance is what you are after, this is the boat to own. With an 80 gauge hull and 90 gage interior, this boat is built to fly. Its eight degree v-hull and stern chine gives it exceptional turning ability and ride quality without beating you to death. All these features coupled with the havoc hull translate into a boat that is flat out fast and agile.



- Standard Features**
- 8 degree 80 Gauge hull
- 100 Gauge Aluminum Transom & Bow
- 90 Gauge Interior Parts
- Navigation lights
- Aluminum Floor
- Cobblestone Paint
- 1- Battery tray
- 48" High Deck with under storage
- 2-Year Warranty

Model	1550 DB	1553 DB	1556 DB
Length	15 Ft	15.5 Ft	15 Ft
Bottom	50 in.	53 in.	56 in.
Beam	64	65	68
Sides	21	21	21
Transom	15-20	15-20	15-20
Max Wt./per/mo/gr	950	1010	1100
Total Wt./Cap	4/600	4/700	4/750
Hull Thickness	.80	.80	.80
Max HP	40	40	50

See Pages 25-31 and your dealer for additional options

DBST

Lets face it we're getting older and those old football injuries seem to ache just a little more after standing in the cold all morning or trudging through the mud picking up decoys. Our DBST line offers the same handling characteristics as the Duck boat line with the addition of a rear step transom

The step transom provides easy access to the boat even while wearing heavy waders and bulky winter clothes. In addition, this step transom makes an excellent platform for your retriever and doubles as a swim platform during summer trips to the lake with the family.



Shown w/ options



Model	1550 DBST	1553 DBST	1556 DBST	1650 DBST	1656 DBST	1756 DBST	1860 DBST
Standard Features	8 Degree, v-how & hull 5052 Alloy .100 Ga hull Cobblestone base coat Center keel saver T'lock gunnel rails All aluminum transom Diamond plate floor 6063 Longitudinal ribs Navigation lights High-deck with under storage, fuel line						
Length	15 Ft	15.5 Ft	15 Ft	16 Ft	16 Ft	17 Ft	18
Bottom	50 in.	53 in.	56 in.	50 in.	56 in.	56 in.	60
Beam	63	65	68	63	68	68	80
Sides	21	21	21	21	21	21	21
Transom	15-20	15-20	15-20	15-20	15-20	15-20	15-20
Max Wt./per/mo/gr	950	1010	1100	1100	1100	1150	1150
Total Wt./Cap	4/600	4/700	4/750	4/700	4/720	4/800	4/800
Hull Thickness	.100	.100	.100	.100	.100	.100	.100
Max HP	40	40	50	50	50	50	75

See Pages 25-31 and your dealer for additional options

The MST's round out our mud motor line. These boats build upon the DBST platform but with an innovative hull design that compliments the terrain mud boats are designed for. Some manufacturers mud boats are going to heavy 3/16" aluminum however, weight is a huge factor in mud boat design. The Havoc MST's inverted keel design coupled with Insurrection longitudinal ribs make for a tough hull using lighter weight material to get you back in the nasty stuff where nobody else can go.

The MST can be outfitted with optional features like a built in gun box and a LED light bar, to help navigate while hanging onto our custom Mud motor control bar.

Mud motor handle bars are a must have option for many mud motor enthusiasts when bouncing off of stumps and jumping logs.



NEW FOR 2017

- Standard Features**
- 8 Degree, v-bow & hull
 - 5052 Alloy .100 Ga hull
 - Inverted keel w/center keel saver
 - Cobblestone base coat
 - T'lock gunnel rails
 - All aluminum transom
 - Diamond plate floor
 - 6063 Longitudinal I-beam ribs
 - Navigation lights
 - 50" High-deck with under storage fuel line

Model	1550 MSTC	1553 MSTC	1556 MSTC	1650 MSTC	1656 MSTC	1756 MSTC	1860 MSTC
Length	15 Ft	15.5 Ft	15 Ft	16 Ft	16 Ft	17 Ft	18
Bottom	50 in.	53 in.	56 in.	50 in.	56 in.	56 in.	60
Beam	63	65	68	63	68	68	80
Sides	21	21	21	21	21	21	21
Transom	15-20	15-20	15-20	15-20	15-20	15-20	15-20
Max Wt./per/mo/gr	950	1010	1100	1100	1100	1150	1150
Total Wt./Cap	4/600	4/700	4/750	4/700	4/720	4/800	4/800
Hull Thickness	.100	.100	.100	.100	.100	.100	.100
Max HP	Mud						

- Standard Features**
- 8 Degree, v-bow & hull
 - 5052 Alloy .100 Ga hull
 - Inverted keel w/center keel saver
 - Cobblestone base coat
 - T'lock gunnel rails
 - All aluminum transom
 - Diamond plate floor
 - 6063 Longitudinal I-beam ribs
 - Navigation lights
 - 50" High-deck with under storage fuel line

Model	1550 MST	1553 MST	1556 MST	1650 MST	1656 MST	1756 MST	1860 MST
Length	15 Ft	15.5 Ft	15 Ft	16 Ft	16 Ft	17 Ft	18
Bottom	50 in.	53 in.	56 in.	50 in.	56 in.	56 in.	60
Beam	63	65	68	63	68	68	80
Sides	21	21	21	21	21	21	21
Transom	15-20	15-20	15-20	15-20	15-20	15-20	15-20
Max Wt./per/mo/gr	950	1010	1100	1100	1100	1150	1150
Total Wt./Cap	4/600	4/700	4/750	4/700	4/720	4/800	4/800
Hull Thickness	.100	.100	.100	.100	.100	.100	.100
Max HP	Mud						



Shown w/commercial rating for Mud Mud motors only. Does not include full flotation foam to make room for rear pod storage



Many of our Fishing specific Models come standard with Minn Kota trolling motors. Now you can also order any new Havoc Boat with Minn Kota accessories like the Talon Shallow water anchoring system or upgrade to other Minn Kota accessories and motors like the Fortrex for even more performance.

ALL SEASON PERFORMANCE



SHALLOW WATER ANCHOR
TALON

FORTREX

Deeper. Tougher. Quieter. Smarter. You demand a lot out of your shallow water anchor, and Talon delivers all of it and then some. The world's only 12' shallow water anchor also boasts game-changing toughness, speed, strength and stealth operation. Stand your ground with Talon.

It's not just powerful. It's angry. Fortrex's ruthlessly tough mount packs up to 112 pounds of thrust to tear through anything you put in its path and deliver you to the fish.

Stick Steer Crappie

Now you can have the same legendary performance found in our Havoc Boats Duck Boat line in a comfortable, purpose built, stick steer crappie configuration. From the ramp to your favorite fishing hot spot, Start rippin lips without ever leaving the helm.

Complete with a Minn-Kota trolling motor, Humminbird fish finder, and optional center live well, this boat comes standard with all the features you need to get after those white perch, bream, blue gill and goggle eye. Kids are not included, but with this boat, I'm sure you won't have a hard time finding a fishing partner.



Standard Crappie

Model	1556 SS	1653 SS	1656 SS	1756 SS
Length	15 Ft	16 Ft	16 Ft	17 Ft
Bottom	56 in.	53 in.	56 in.	56 in.
Beam	68	68	68	68
Sides	21	21	21	21
Transom	20	20	20	20
Max Wt./per/mo/gr	1100	1100	1100	1150
Total Wt./Cap	4/750	4/700	4/720	4/800
Hull Thickness	.100	.100	.100	.100
Max HP	40	50	50	50

Standard Features

8 Degree Hull Aluminum Transom
100 Gauge Hull Aluminum Floor
Navigation Lights
Cobblestone Paint
Havoc Hyde liner (Inside)
45lb Minnkota Humminbird 197c

Recessed Switch Panel

Interior Lighting Package
800 GPH Bilge Pump
2- Battery Trays
2- Havoc Fishing Seats
2- Rod Trays with Rod Tubes EZ-Stick 3 Steering System
4-Black Nylon Cleats

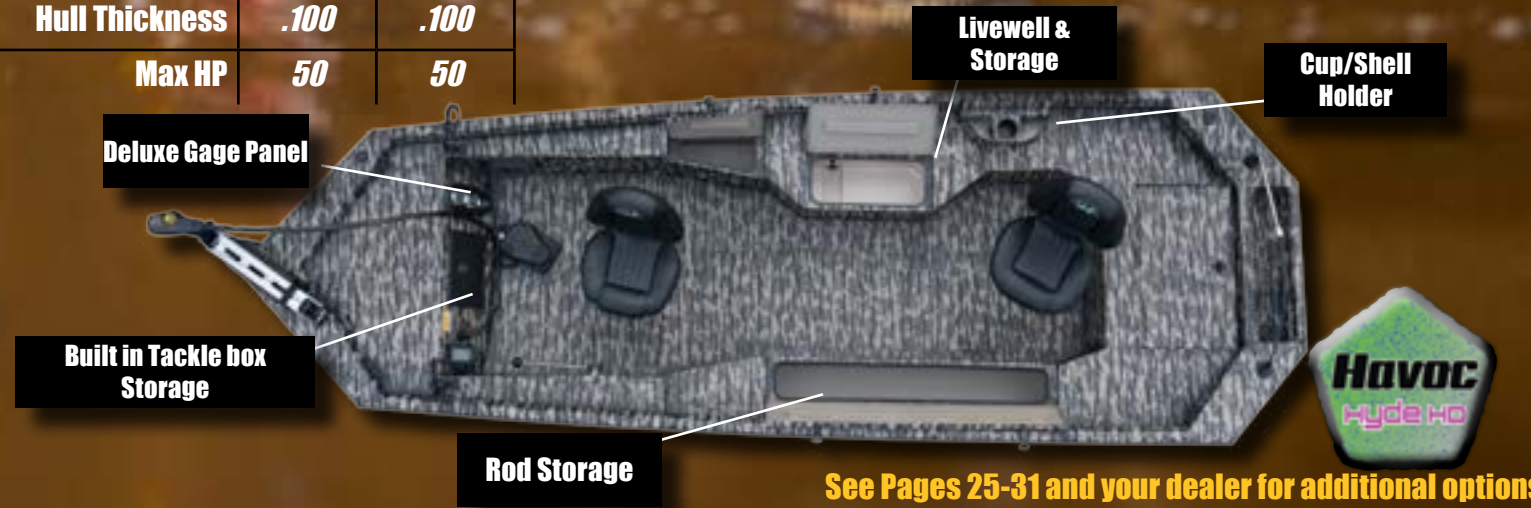
Deluxe Crappie

Model	1756 DC	1856 DC
Length	17 Ft	18
Bottom	56 in.	56
Beam	68	68
Sides	21	21
Transom	20	20
Max Wt./per/mo/gr	1150	1150
Total Wt./Cap	4/800	4/800
Hull Thickness	.100	.100
Max HP	50	50

Standard Features

8 degree hull Aluminum Transom
100 Gauge Hull Built-in Splash Pan
Navigation Lights
Aluminum Floor
Cobblestone Paint
Havoc Hyde liner (Inside)
45lb Minnkota Trolling Motor
Humminbird 197c Fish Finder
Havoc Recess Switch Panel

Interior Lighting Package
800 GPH Bilge Pump
2- Battery Trays
2- Havoc Fishing Seats
1-Rodbox (Starboard)
EZ-Stick 3 Steering System
4-Black Nylon Cleats
Livewell w/2 Minnow Buckets Gauge Package (speed,Tach & Fuel)

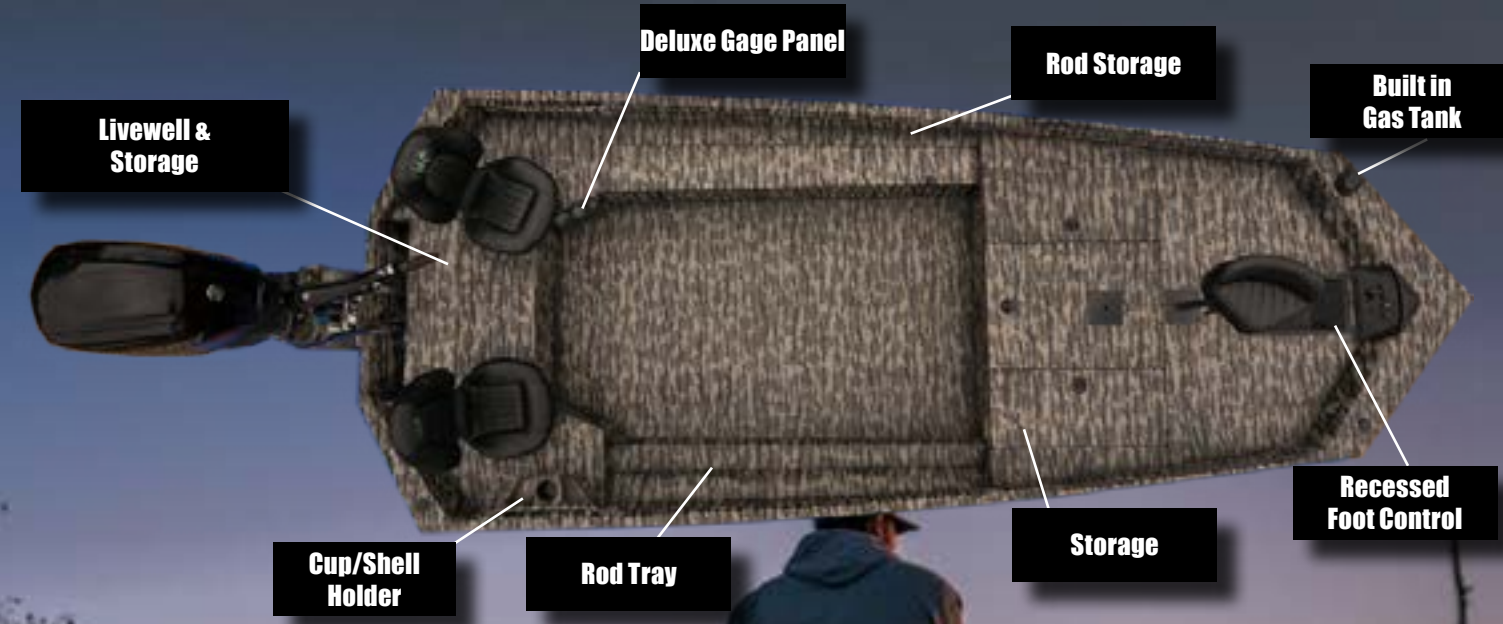


See Pages 25-31 and your dealer for additional options

1860 Bass Assassin

Do you bass fish mostly riverbottoms like we do? Are creek channels and back water sloughs the secret to your success in the weekly bass tournament? Are you sick of not having room in your console bass boat, for ice chests and gear?

We designed the 1860 Bass Assassin with you in mind. With a large bass fishing deck and ample floor space and all the room you need for gear, the 1860 Bass Assassin gets you places you wouldn't dream of taking a fiberglass boat. Now add to that, the maneuverability of a tiller handle boat and the performance of Havoc Boats and you have a boat you will love for years. When winter rolls around and the first frost has mallards on the move, this boat allows you to switch gears and get in on that action too.



Standard Features

- 16 degree hull
- Navigation lights
- Aluminum Floor
- Havoc Hyde liner (Inside)
- Havoc Recess Switch Panel
- Interior lighting package
- 800 GPH Bilge pump
- 3 Battery trays

- Built in 12 gal Fuel Tank (Front deck)
- 1-Rod Box w/rod tubes (Port side)
- Front Control switch Panel
- 4-Black Nylon Cleats
- Fiberglass Rear Deck LiveWell
- 6'-6" Casting Deck w/Storage & Seat Base
- Recessed Foot Pedal Tray
- Cobblestone Paint Finish



Model	1860 BA
Length	18 Ft
Bottom	60 in.
Beam	84
Sides	24
Transom	20
Max Wt./per/mo/gr	1150
Total Wt./Cap	4/800
Hull Thickness	.100
Max HP	75



See Pages 25-31 and your dealer for additional options

Adventure Series

NEW FOR 2017

The all new adventure series is our most versatile boat yet. This boat offers an innovative design that allows you to tailor your boat for your adventure. This boat ships standard with no front deck.

That's Right. No front Deck. This gives you the ability to tailor your boat to meet your needs. For duck hunting, leave the deck out or install a Gate for more room for gear. Cat fishing, install the front seat box to store your trot lines and gear and easy access. For Bass fishing, install the optional Bass deck for ample room to move when flipping brush piles. Or, for those late nights install our all new Bow fishing platform complete with Seelites all new lighting system.

No matter where your adventure takes you, We've got the boat for you. Talk to your Havoc Boats Dealer to determine which options are best for your next adventure

Model	1444 AS	1544 AS	1550 AS	1553 AS	1556 AS	1650 AS	1656 AS	1753 AS	1756 AS	1860 AS
Length	14	15	15 Ft	15.5 Ft	15 Ft	16 Ft	16 Ft	17 Ft	17 Ft	18 Ft
Bottom	44	44	50 in.	53 in.	56 in.	50 in.	56 in.	53 in.	56 in.	60 in.
Beam	62	62	63	65	68	63	68	65	68	84
Sides	21	21	21	21	21	21	21	21	21	21
Transom	20	20	20	20	20	20	20	20	20	20
Max Wt./per/mo/gr	970	970	950	1010	1100	1100	1100	1150	1150	1460
Total Wt./Cap	3/620	3/620	4/600	4/700	4/750	4/700	4/720	4/750	4/800	6/814
Hull Thickness	.100	.100	.100	.100	.100	.100	.100	.100	.100	.100
Max HP	25	25	40	40	50	40	50	50	50	75

- Standard Features**
- 8 Degree .100 Ga hull
 - Cobblestone Paint
 - Navigation lights
 - 1- Battery Tray
 - 2-gun/rod trays
 - 800 GPH Bilge pump



Gate



Bass Deck



Utility Box w/Seat Pad



Bow Fishing Platform w/Seelites TWB Series Lights

1756 and Larger boats

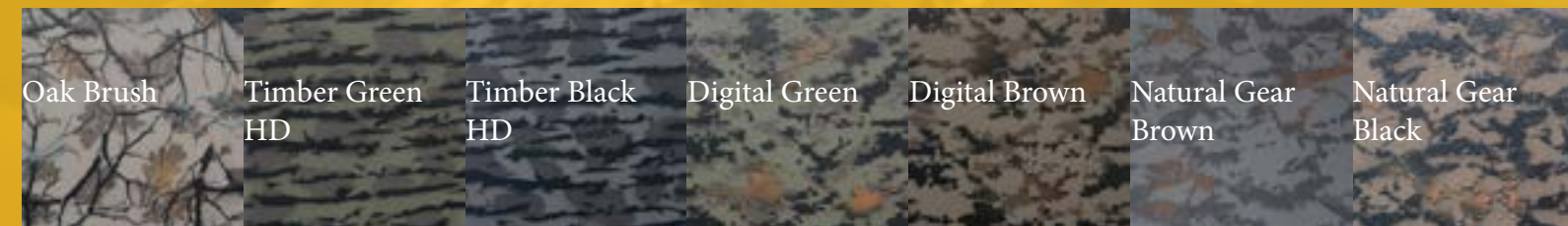
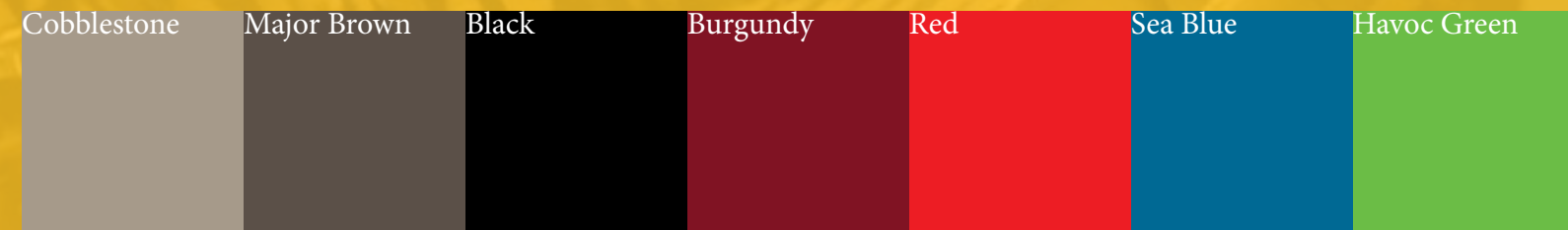
See Pages 25-31 and your dealer for additional options

Durability

Lets face it, we are tough on our gear. After 60 days of sleepless nights and 2:00am alarms the last thing you need to worry about is "will my old beat up boat get me out there and back one more time?" When we design our boats, we build them to perform to your expectations, day in and day out. From the materials that go into the boats, to our QC process, you don't have to worry about the durability of your Havoc Boat. We use premium paints and coatings that will ensure your investment last until you decide to upgrade to your next Havoc Boat.



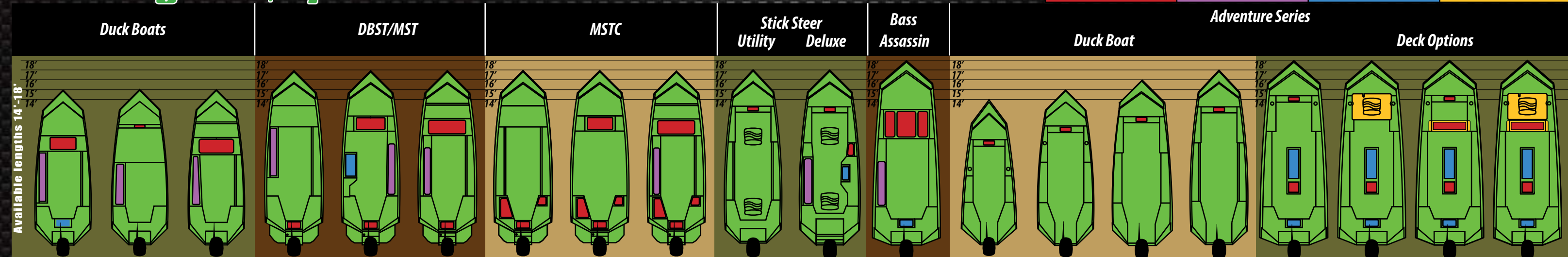
Paint & Camo



Havoc Hyde HD is an all new boat liner coating offered exclusively through Havoc Boats. This new coating option offers improved nonskid performance for greater protection from slips and falls as well as excellent protection for your boat in the harshest environments. From bumps and bangs, to gasoline and oil, Havoc Hyde is there to protect your investment.

Boat Layouts, Options and Accessories

Storage Rod/Gunbox Livewell Removable



Standard Features
 5052 Alloy .100 Ga hull*
 Center keel saver
 6063 Longitudinal ribs
 Navigation lights



All Aluminum Transom T-lock Gunnel Rails Diamond Plate Floor



Standard DBST MST



DECK OPTIONS	DB MODELS	DBST MODELS	MST MODELS	U.S-S MODELS	D.S-S MODELS	RDB MODELS	BA MODELS	ADVENTURE SERIES
50" High front deck		S	S					
40" Low front deck								
36" Mid deck	S							
50" High front deck top hatch								
36" Mid deck top hatch	S							
6' 3-lid casting deck							S	
Sport front Deck								
Wing Back Rear Deck	S	S	S			S	S	S
Rear Split Pod Seating	O					O		O
Straight Rear Deck					S			
Removeable High Front Deck								O
Bow Fishing Deck/L.E.D lights(see dealer)								O
Aerated livewells								
Wing back rear deck fiberglass L/W	O					O	O	O
Fiberglass Side L/W	O	O	O	O	S	O		
Storage								
Built in rodbox (fit to rear to front deck)	O	O	O		S	O	S	
Rod/Gun trays	O	O	O	S		O		S
60" gun box	O	O	O			O		
Center Cat fish box/seat pad(non aerated)								O (1756+)
Removeable front storge/seat pad								O
Seat boxes					O			
Fuel Tanks								
6 gal. portable	O	O	O	O	O	O	O	O
12 gallon built in	O	O	O	O	S	O		
18 gallon built in							S	
Boat accessories								
2' bow rails	O	O	O	O	O	O	O	
4' bow rails	O	O	O	O	O	O	O	
Stand up bar	O	O	O	O	O	O	O	O
80 Gauge 5052 alloy						S		
100 Gauge 5052 alloy	S	S	S	S	S		S	S
125 Gauge 5052 alloy	O	O	O	O	O	O	O	O
OS handles	O	O	O	O	O	O	O	O
Cup/shell holders	O	O	O	O	O	O	O	O
Side mount trolling motor bracket	O	O	O	O	O	O	O	O
Electrical/lighting								
Havoc recessed 5-switch panel	O	O	O	S	S	O	S	O
SeeLite 10" low profile light bar	O	O	O	O	O	O	O	O
Extra 12volt accessory plugs	O	O	O	O	O	O	O	O
Interior L.E.D Light group	O	O	O	O	O	O	O	O
Wash down pump								O
Seats/Driving pads								
Havoc fishing seats (Black/Green logo)	O	O	O	O	O	O	S	O
Havoc Butt Seats (Black/Green logo)	O	O	O	O	O	O	O	O
Rear driving pads	O	O	O			O		O
Front deck pads								O
Paint Finishes								
Cobblestone	S	S	S	S	S	S	S	S
Camo	O	O	O	O	O	O	O	O
2 Tone/ polyurethane (see colors Chart)				O	O	O	O	O
Havoc Hyde Liner	O	O	O	S	S	O	S	O

Partner Products

At Havoc, you can custom order your boat with some of the leading brands of motors and aftermarket accessories. Whether factory installed or as a dealer option, we have the gear you need to make your boat buying process a breeze and get you out on the water #wreakinhavoc.



Titan Trailers

Hauling your boat safely is the most important aspect of any boat trailer. A trailer that fits your boat properly is the easiest way to haul your boat safely and make sure that your boat isn't damaged on rough gravel roads and miles of highways. Titan Trailers are custom made for Havoc Boats and come standard with many features other companies charge extra for.



All steel trailers are powder coated with Sherwin Williams Powdura for long lasting, chip and rust resistance.

HAVOC



Tandem Axle



Aluminum

Steel



Aluminum Wheels



LED Lighting



Heavy Duty Bow Stop



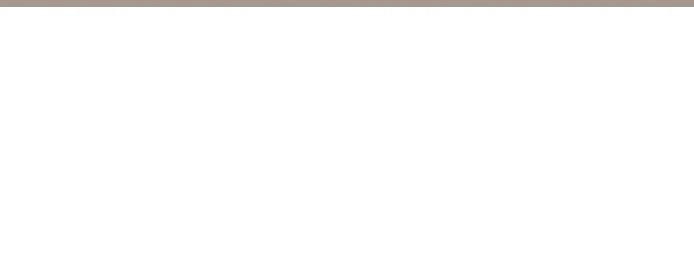
Diamond Tread Fender/Steps



These specifications and options are accurate to the best of our knowledge. However, Titan Marine reserves the right to change features and specifications without additional notice. Always consult local boating regulations and practice safe boating. Titan Marine, LLC warrants to the original owner to each hull, for the lifetime of the boat from defects in material and workmanship under normal recommended use. Warranty repairs will be made without charge by Titan Marine. Transportation charges to and from the place of repair are the responsibility of the owner. All repairs made under warranty are subject to authorization by an officer of Titan Marine, LLC. All other obligations or liabilities, including loss of use, inconvenience, commercial loss and consequential damages are hereby excluded. This warranty does not apply to carpet, upholstery, painted finishes or equipment and accessories not manufactured by Titan Marine, LLC.

#WREAKINHAVOC

HAVOC BOATS
Authorized Dealer



**Riverbank
Products**
Marketing · Product Development
www.riverbankproducts.com