


**USAC
INTERNAL VICE
PRESIDENT** 
PRESENTS THE 2015-2016

HOW TO GUIDE

**A RESOURCE
MANUAL FOR
STUDENT GROUPS**

TABLE OF CONTENTS

- 2 Register Your Student Group**
- 4 Funding**
- 7 Programming Fund**
- 9 Operational Funding**
- 14 Getting to Know SOLE Resources**
- 18 Publicity**
- 23 Mental Health Resources**
- 26 Student Organizations Directory**

HowTo Guide: A Resource Manual for Student Groups

Copyright © 2015 by Undergraduate Student Association's Internal Vice President's Office

!""#\$%&'()*\$)*\$+*,-.#/#0\$(%/1#/2#('%)#3//4#567#3*#\$*0\$/89*,:#,%)(\$%38(*,:#/\$#(\$61)5%((*,#%1#617#2/\$5#/\$#37
any means without written permission from the Internal Vice President Office or direct permission
from the Internal Vice President Avinoam Baral. For permission requests, you may write to the office at
;<=>*\$94'/22#?6""#@/)#!1&***):#A!#B<<BC#/\$#*56%"#6(#8)6%+0-6)89"6-89"6-*,8-

D\$%&%16"#E\$60'%9)#61,#@67/8(#37#!53*\$#@*:#@/)#!1&***):#A!-#F0,6(*,#E\$60'%9)#61,#@67/8(#37#A6\$"/)#G8%1(61%
!"61#H'8:#61,#164""*1#@**-*J618269(8\$*,#6(#('*#F1%+*\$)%(7#/2#A6"%2/\$1%6:#@/)#!1&***)-#K\$%1(*,#%1#('*#F1%(*,#L
/2#!5*\$%96-

REGISTER WITH ORGSYNC

1

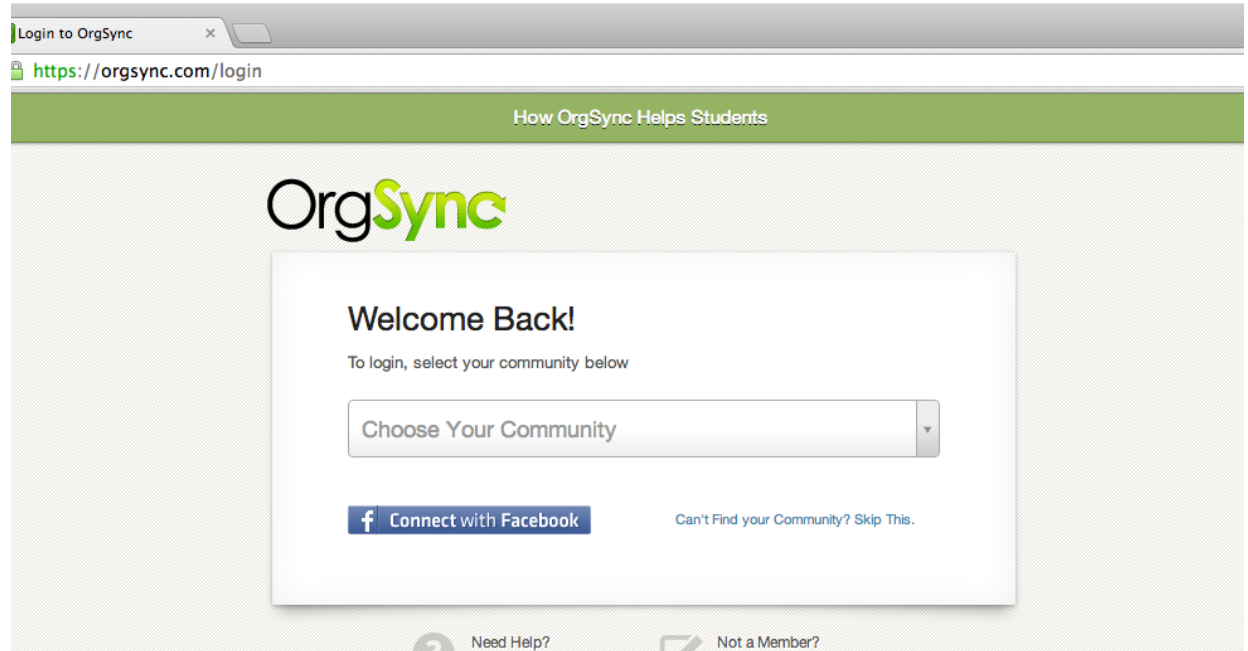
Create an OrgSync Account for yourself (you will create your group in the proceeding steps)

Go to www.orgsync.com/login

Under "Choose your Community" select "UCLA"

Click on: "Sign in with your Campus ID" and use your UCLA login.

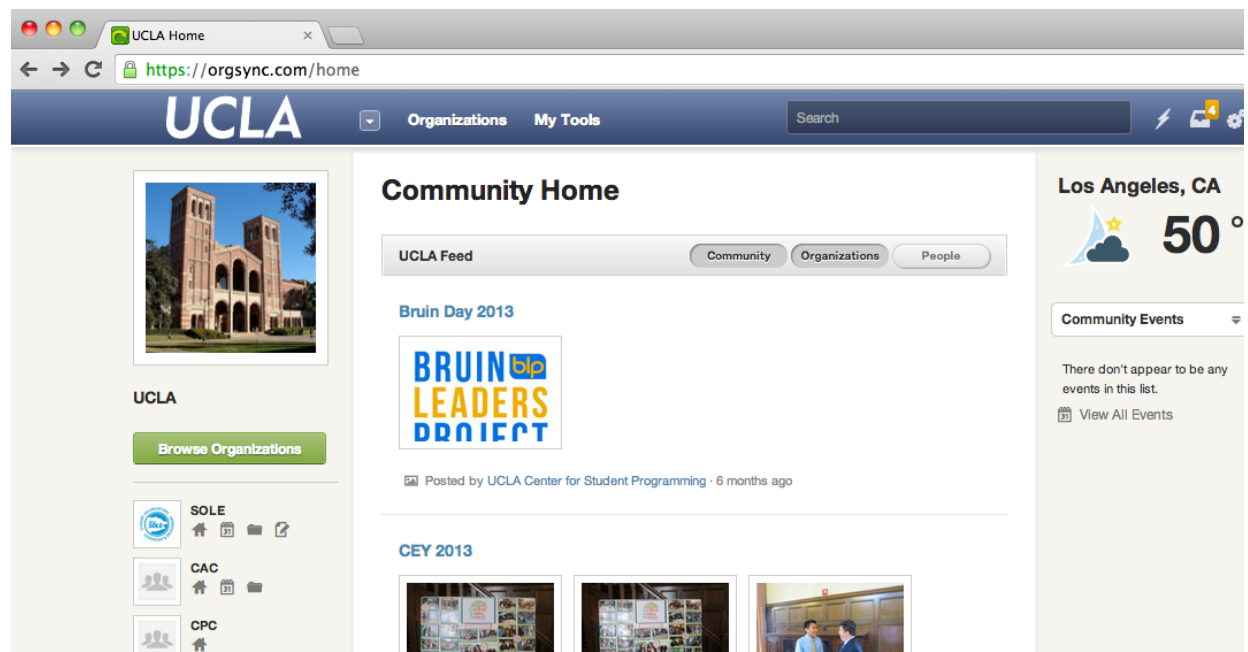
When completed you should see: "Your profile has been successfully updated."



2

Welcome to OrgSync

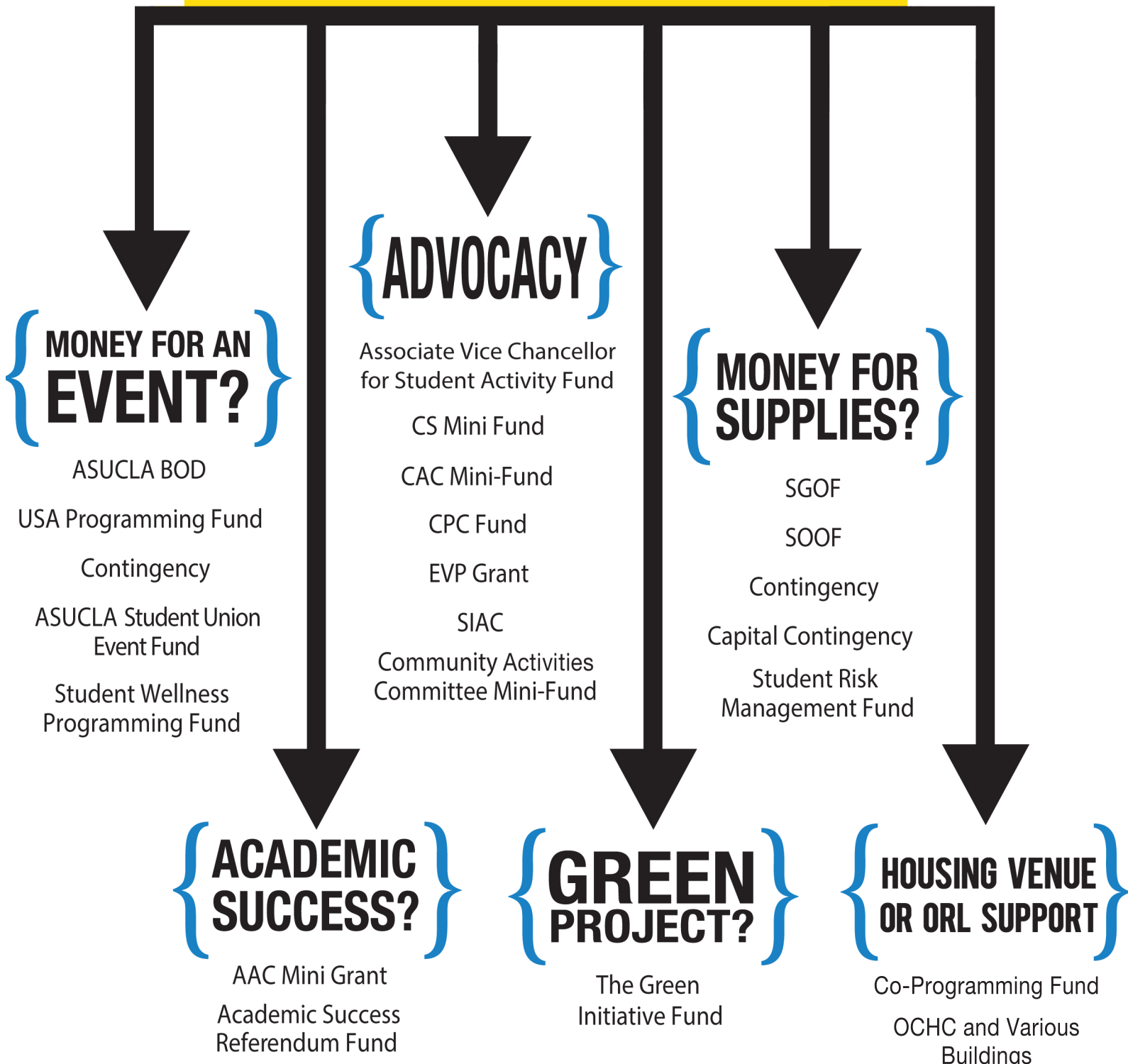
- Once you complete your account, you will automatically be part of the SOLE OrgSync Portal.
- Use the "Organizations" Tab on the top to see what groups you are apart of OR join other groups.



FUNDING

WHAT DO YOU NEED?

FOR MORE INFORMATION VISIT
WWW.USAC.UCLA.EDU



PROGRAMMING FUNDING

PROGRAMMING FUNDS DIRECTORY

LINE ITEMS : ITEMS FUNDING COVERS

SOURCE **Contingency Programming**

TYPE Supplemental funding for programming events

RANGE Determined by USA Finance Committee

LINE ITEMS Advertising, Graphics, Facilities, Honorarium, Supplies, Food, Transportation, Incentives

CONTACT Finance Committee | 300B Kerckhoff Hall |
usacficom@gmail.com |
www.students.asucla.ucla.edu >> funding

DEADLINE At least 21 days prior to program

HEARING No

SOURCE **Community Service Mini Fund**

TYPE Funding for community service programming

RANGE Up to \$3500 per student group

LINE ITEMS Transportation, Food, Supplies, Admissions tickets

CONTACT Chairperson | 300B Kerckhoff Hall |
csminifund@gmail.com | www.asucla.ucla.edu >> funding

DEADLINE Quarterly

HEARING Hearings take place the week following submission of your application on the Friday of Week 4

SOURCE **Associate Vice Chancellor's Student Activities Fund**

TYPE Funding for student programming

RANGE Varies

LINE ITEMS Risk Management Expenses, On Campus Facilities, On Campus Advertising, other publicity and graphic services, Food/Meal Services, Disposable supplies, Honorarium, Incentives

CONTACT Debra Geller/Student & Campus Life | 1104 Murphy Hall |
dgeller@saonet.ucla.edu

DEADLINE At least 14 days prior to event

HEARING No

SOURCE **Campus Programming Committee: Regular Fund**

TYPE Funding for programs open to all UCLA students

RANGE \$1,000 – \$8,500

LINE ITEMS Honorarium, Facilities, Supplies, Advertising, Graphics, Transportation, Food

CONTACT Melissa Veluz-Abraham, CSP | 105 Kerckhoff Hall |
mveluz@saonet.ucla.edu |
www.studentactivities.ucla.edu >> funding

DEADLINE Six funding cycles per year

HEARING Hearings will take place in late August-early September

SOURCE **Campus Programming Committee: Mini-Fund**

TYPE Funding for programs open to all UCLA students

RANGE \$1000

LINE ITEMS Honorarium, Facilities, Supplies, Advertising, Graphics, Transportation, Food

CONTACT Melissa Veluz-Abraham, CSP | 105 Kerckhoff Hall |
mveluz@saonet.ucla.edu |
www.studentactivities.ucla.edu >> funding

DEADLINE 2nd-8th week of each quarter

HEARING Hearings will take place in late August-early September

SOURCE **ASUCLA Board of Directors Programming Fund**

TYPE Funding for large-scale programs events

RANGE Determined by Budget Review Committee

LINE ITEMS Advertising, Graphics, Honorarium, Supplies

CONTACT Budget Review Director | 300B Kerckhoff Hall |
usabudgetreview@gmail.com |
www.students.asucla.ucla.edu >> funding

DEADLINE Quarterly

HEARING Hearings will begin the following week on Tuesday after the deadline

SOURCE **ASUCLA Student Union Event Fund**

TYPE Funding for ASUCLA facilities

RANGE Determined by type of facility/equipment

LINE ITEMS UCLA facilities limited to Kerckhoff and Ackerman

CONTACT Events Manager A-262 Ackerman Union |
events@asucla.ucla.edu |
www.asucla.ucla.edu >> event services

DEADLINE Preset deadlines according to day of event

HEARING Hearings will begin the following week on Tuesday after the deadline

SOURCE **The Green Initiative Fund (TGIF)/Mini Fund**

TYPE Funding for sustainable projects at UCLA

RANGE No maximum amount/ Mini Fund- \$500 Maximum

LINE ITEMS Initiatives or physical materials that promote sustainability

CONTACT Patty Zimmerman | pzimmerman@asucla.edu

DEADLINE Quarterly

HEARING Schedule a hearing time with the TGIF coordinator, Patty Zimmerman, at pzimmerman@asucla.ucla.edu

{ PROGRAMMING FUNDS DIRECTORY }

CONTINUED

LINE ITEMS : ITEMS FUNDING COVERS

SOURCE **Community Activities Committee: General**
TYPE Funding for off-campus services for economically disadvantaged communities
RANGE Up to \$10,000
LINE ITEMS Advertising, Clerical Supplies, Facilities, Equipment, Food, Honorarium, Postage, Printing, Special Supplies, Telephone, Transportation
CONTACT Melissa Veluz-Abraham, CSP | 105 Kerckhoff Hall | mveluz@saonet.ucla.edu | www.studentactivities.ucla.edu >> funding
DEADLINE Annually in August
HEARING Hearings will take place in late August or early September

SOURCE **Community Activities Committee: Mini-Fund**
TYPE Funding for off-campus services for economically disadvantaged communities
RANGE Max \$1,800
LINE ITEMS Advertising, Clerical Supplies, Facilities, Equipment, Food, Honorarium, Postage, Printing, Special Supplies, Telephone, Transportation
CONTACT Melissa Veluz-Abraham, CSP | 105 Kerckhoff Hall | mveluz@saonet.ucla.edu | www.studentactivities.ucla.edu >> funding
DEADLINE Quarterly
HEARING Hearings will take place in late August or early September

SOURCE **Academics Affairs Commission: Academic Success Referendum**
TYPE Funding for programs that promote educational reform and academic support
RANGE Up to \$2,000
LINE ITEMS Supplies, Graphics and Honorarium
CONTACT Academic Affairs | 310 Kerckhoff Hall | aacgrants@gmail.com | www.students.asucla.ucla.edu >> funding >> programming
DEADLINE At least 14 days prior to program
HEARING No

SOURCE **Academic Affairs Commission: Mini-Grants**
TYPE Funding for programs that promote educational reform and academic support
RANGE Up to \$1,000
LINE ITEMS Supplies, Graphics and Honorarium
CONTACT Academic Affairs | 310 Kerckhoff Hall | aacgrants@gmail.com | www.students.asucla.ucla.edu >> funding
DEADLINE At least 14 days prior to event
HEARING The following Tuesday

SOURCE **EVP Advocacy Grant**
TYPE Funding for programs that support social justice
RANGE Maximum of \$500
LINE ITEMS Registration, Accommodations, Facilities, Transportation, Publicity, Supplies
CONTACT ucla.evp.grant@gmail.com
DEADLINE At least 21 days prior to event
HEARING To be scheduled by EVP

SOURCE **Cultural Affairs Programming Mini-Fund**
TYPE Supplementary funding for cultural programming
RANGE Up to \$1,000
LINE ITEMS Honorariums, Supplies, Venues
CONTACT Cultural Affairs Commissioner | 311 Kerckhoff Hall | 825-6564 | usacac@asucla.ucla.edu
DEADLINE At least 21 days prior to the program
HEARING No

SOURCE **Student Initiated Access Committee: Mini-Fund**
TYPE Community service projects that conduct outreach
RANGE Up to \$500
LINE ITEMS Advertising, Clerical Supplies, Equipment, Facilities, Food, Honorarium, Insurance, Postage, Printing, Special Supplies, Telephone, Transportation
CONTACT 105 Student Activities Center | 267-4349 | www.students.asucla.ucla.edu >> funding | siacminifund@gmail.com
DEADLINE Quarterly
HEARING TBA for 2014-2015 academic school year

SOURCE **Capital Contingency**
TYPE Funding for large and/or expensive office supplies
RANGE Up to \$1,500
LINE ITEMS Computer and peripherals, furniture
CONTACT usacficom@gmail.com
DEADLINE At least 21 days prior to purchase
HEARING No

SOURCE **Student Wellness Programming Fund**
TYPE Supplemental funding for health oriented programs and/or events
RANGE \$500
LINE ITEMS Supplies, Facilities, Honorariums
CONTACT usaswc@asucla.ucla.edu
DEADLINE At least 14 days prior to event
HEARING No

SOURCE **Core Programming Fund with ORL**
TYPE Funding for programs that take place on the Hill
RANGE Determined by ORL Council
LINE ITEMS Supplies, Incentives, Food/M meal Services, and Facilities
CONTACT Resident Director or Program Coordinator, Visit https://www.orl.ucla.edu/contact
DEADLINE At least 21 days prior to event
HEARING No

OPERATIONAL FUNDING

STUDENT ORGANIZATION OPERATIONAL FUND (SOOF)

SOURCE	Student Organization Operational Fund (SOOF)
TYPE	Funding for year long organizational expenses
RANGE	Up to \$3000 a year
LINE ITEMS	Retreats, Food, Graphics, Stipends, Advertising, T-shirts, Supplies
CONTACT	Budget Review Director at usabudgetreview@gmail.com
DEADLINE	Quarterly

1

Access the application on the USAC website <http://usac.ucla.edu/funding/operational.php>

Create an online account with Staples, Office Max, or any office supply store and create a “shopping basket” of everything that you are expecting to use for the year with your SOOF money (i.e. staplers, printer ink, binders)

2

3

Research and include all documentation for any other expenses that you plan on incurring through the use of SOOF. Documentation is the most important thing for funding applications.

Meet with your SOLE advisor to go over what operational necessities your student group actually needs before applying to ensure you receive your ideal amount.

4

5

Attach all online documentation and answer responses on the online SOOF application and submit before the deadline in case there are any technology issues.

The organization signatory will receive an email asking to reconfirm the submission of your SOOF application. Email the Budget Review Director to ensure your application was submitted successfully.

6

7

Attend your hearing with the Budget Review Committee where they will ask you questions about your organization and the funding you're applying for.

Once USAC approves the allocations, the organization signatory will receive an email stating that the funds are available.

8

WAYS TO ACCESS YOUR FUNDING

If you want a cash advance:

Fill out a requisition form (from the SGA Office, Kerckhoff 332) and indicate **cash advance** in the check box.

1

Attach all necessary documentation (quotes/invoices) for services or products you plan to purchase with the cash advance.

2

Submit a requisition form with documentation **to the finance committee chairperson's mailbox (#58 3rd floor Kerckhoff)**

3

Allow the check two weeks to process.

4

Pick up your cash advance check from the SGA Office.

5

Lastly, submit proof of payments of approved items you purchased with the cash advance. If there are left over funds, write a check out to 'ASUCLA' for the balance.

If you don't complete this process within 2 weeks, you may have academic penalties inflicted on your record.

6

If you want a reimbursement:

Fill out a requisition form (from the SGA Office, Kerckhoff 332) and indicate **reimbursement** in the check box.

1

Attach all necessary documentation (proof of payment/receipt for approved items you purchased.
*You will not be reimbursed for items not on the approved guidelines.

2

Submit a requisition form with documentation **to the finance committee chairperson's mailbox (#58, 3rd floor Kerckhoff)**.

3

Allow the check two weeks to process.
You will pick up the reimbursement from the SGA Office.

4

If you want a purchase order:

Make sure your vendor accepts purchase orders.

1

Fill out a requisition form (from the SGA office, Kerckhoff 332) & indicate **purchase order** in the check box.

2

Include an estimate on your requisition form for your purchase order.

3

Submit requisition form & documentation to the Finance Committee Chairperson's mailbox (3rd floor of Kerckhoff).

4

Give your vendor the purchase order.

5

An invoice should be sent from the vendor to the SGA. If an invoice is given to you, be sure to forward it to SGA.

6

SGA will pay the vendor with your purchase order.

7

Remember purchase order need prior approval and adequate time, so plan accordingly.

TIP

STUDENT GOVERNMENT ACCOUNTING

Located in
Kerckhoff 332,
with customer service
hours from
11pm-5pm.

Student Government Accounting processes requisitions, manages the USAC budget, and maintains transparency of funding transactions on campus. The Budget Review Director, Financial Committee Chairperson, CS Mini Fund Chair, and TGIF Grant Chair work hand in hand with SGA to get student groups their money after applications and requisitions have been handled.

GENERAL REQUISITION AND PAYMENT ORDER
(This is not a Purchase Order. Do not forward to vendor)

Requisition Form: Instructions

SECTION 1: Basic info

SECTION 2: Info regarding the person or vendor the check will be made out to

SECTION 3: Filled out by SGA

SECTION 4: Dept Name: group's name as it is registered with CSP
Dept Number: found on the USAC website under SGA > Resources & Forms

SECTION 5: Honorary contract & W-9 form must be filled out for payments to a performer for services rendered. Honorary contract should be signed by a signatory.

SECTION 6: Leave blank. Orders must be shipped & delivered to the SGA office as indicated on the Purchase Order (PO).

SECTION 7: *IMPORTANT* section that dictates whether a Purchase Order (PO) or a check is made

SECTION 8: Decide how you will obtain the check/PO once it is available

SECTION 9-12: Itemized list of purchases or reason for check/PO. Include location, start and end times, and date.

SECTION 13: account number found on the USAC website under Funding > SGA > Budget Report or ask for an encumbrance budget report at SGA

APPROVALS: USA SECTION

NOTE:
Allow two weeks for processing for requisitions submitting between Aug - Apr.
Allow eight weeks for processing for requisitions submitting between Apr - May.

ORIGINAL - PURCHASING (This form expires one year from the approved date)
YELLOW - CONFIRMING COPY
PINK - ORIGINATOR COPY

3

Create a New Organization

Registration for new student organizations happens quarterly.

Fall Quarter Registration: Early October

Winter Quarter Registration: Early January

What are the Requirements of Starting a Registered Organization (RCO)

Each RCO needs 3 signatories. Signatories are the authorized representatives of the RCO.

Signatories can be any UCLA student, faculty, and/or staff.

Each RCO is required to have a constitution on their group's OrgSync-portal.



4

Discuss with your SOLE Advisor

Once you have officially registered your student group, you will be assigned an advisor from the Student Organizations Leadership and Engagement. Your advisors will help you with further inquiries about funding, publicity, and event planning. You can find out who your SOLE Advisor is on the first floor of Kerckhoff at 105 Kerckhoff Hall.

Contact information for SOLE Advisors:

Mike Cohn - mcohn@saonet.ucla.edu

Pam Cysner – pcysner@saonet.ucla.edu

Kristopher Kaupalolo – kkaupalolo@saonet.ucla.edu

Orlando Luna – oluna@saonet.ucla.edu

Carissa Requejo – crequejo@saonet.ucla.edu

Terry Saunders – tsaunder@saonet.ucla.edu

Melissa Veluz-Abraham – mveluz@saonet.ucla.edu

GETTING TO KNOW

**SOLE
RESOURCES**

STUDENT ORGANIZATIONS LEADERSHIP AND ENGAGEMENT

Empowering students through organizational development, fostering leadership and active engagement

The SOLE Office advises over 1000 campus organizations. Services include registration of new and continuing organizations, programming assistance, organization development, fundraising approval and guidelines, funding proposal consultation, and advisement on rules and regulations. The Main Office also approves time, place, and manner for the campus activities of registered organizations.

For more information visit www.sole.ucla.edu.

UCLA

Student Organizations, Leadership & Engagement
A Department of Student Affairs



[Home](#) [About SOLE](#) [CEY Award](#) [Resources](#) [Policies](#) [Organizations](#) [Leadership](#) [Funding](#) [FAQs](#)

3 of 4

CHECK OUT A BOOK FROM THE

JENNIE ALVARADO LEADERSHIP LIBRARY

INCLUDING TITLES SUCH AS...
WOODEN ON LEADERSHIP,
EMOTIONAL INTELLIGENCE,
THE LEADERSHIP CHALLENGE,
AND MANY MORE!

FIND THE LIBRARY VERCKHOFF 105

Bruin Leaders Project Library



News and Updates

Returning Groups: Re-registration

If you are a currently registered campus organization, your registration with SOLE lasts until October 31, 2014. In order to remain eligible to use resources and facilities beyond that date, your organization must re-register during Fall 2014 quarter. The registration window starts on **Monday, September 22nd at 12noon** and will end **Friday, October 24th at 5pm**. Instructions on how to re-register your group can be found [here](#).

Posted September 3, 2014

New Groups: Registration + Requirements

If you would like to register a new campus organization, the registration period for the 2014-2015 academic year will start **Thursday, October 2nd at 12noon** and end **Friday, October 24th at 5pm**. Registration for all RCOs will occur online via OrgSync. For step by step instructions, please [click here](#).

Before you start a new organization, it's best to check out the existing organizations to be sure that we do not already have an organization that is similar to yours.

Bruin Plaza

[View Calendar](#) [Reserve Space](#)

The office of Student Organizations, Leadership & Engagement (SOLE) schedules Bruin Plaza for registered campus organizations (RCOs) and helps with the planning of their activities.



CONTACTS

SOLE Main Office

105 Kerckhoff Hall
(310) 825-7041

MIKE COHN, *Director* — mcohn@saonet.ucla.edu
PAM CYSNER, *Advisor* — pcysner@saonet.ucla.edu
CARISSA REQUEJO, *Advisor* — crequejo@saonet.ucla.edu
JAKE GILDEA, *Advisor* — jgildea@saonet.ucla.edu
ORLANDO LUNA, *Advisor* — oluna@saonet.ucla.edu
KRIS KAUPALOLO, *Advisor* — kkaupalolo@saonet.ucla.edu
MELISSA VELUZ-ABRAHAM, *Advisor* — mveluz@saonet.ucla.edu
CYNDI TANDO, *Graduate Intern/Advisor* — stando@saonet.ucla.edu

Fraternity & Sorority Relations (FSR)

105 Kerckhoff Hall
(310) 825-6322

TROY BARTELS, (*AGC/MIGC/Panhel*) — tbartels@saonet.ucla.edu
KEVIN DOUGHERTY, (*LGC/NPHC*) — kdougherty@saonet.ucla.edu

Bruin Leaders Project

105 Kerckhoff Hall
(310) 206-5071

KRIS KAUPALOLO — kkaupalolo@saonet.ucla.edu

Program Activities Board (PAB)

105 Kerckhoff Hall

MELISSA VELUZ-ABRAHAM — mveluz@saonet.ucla.edu

HOW TO RESERVE A VENUE

For General Events, contact:

UCLA Events Office
A-Level Ackerman
(310) 825-8989
(or go in person)

STEPS

- 1 Go to office to see a reservationist.
- 2 Respond to lottery email.
- 3 Check lottery sign-up time.
- 4 (After lottery) Reserve as far in advance as possible.

For Bruin Plaza, contact:

Kris Kaupalolo
kkaupalolo@saonet.ucla.edu
(Requests via e-mail only)

STEPS

- 1 Respond via orgsync in previous quarter.
- 2 Work with ASUCLA to format layout.
- 3 Attain fire-marshal/EHS approval through ASUCLA.

For Student Activities Center, John Wooden Center, IM Field, North Athletic Field, Drake Stadium, Sunset Canyon Recreation, Pauley Pavilion, Los Angeles Tennis Center:

For Ackerman and Kerckhoff Meeting Rooms, Ackerman Grand Ballroom, 2nd Floor Lounge, Grand Salon, and State Rooms, contact:

Student Union Event Services Office
A-Level Ackerman Union
(310) 206-0832

STEPS

- 1 Respond to lottery email.
- 2 Check lottery sign-up time.
- 3 Reserve up to 2 hours/week (you may also reserve banner space).
- 4 (After lottery) Reserve minimum of 5 days in advance.

To book any Recreation facility:

A currently listed signatory should e-mail reserve@recreation.ucla.edu and include the following information:

- Name, e-mail, and phone
- Name of registered group
- Name, e-mail, and phone of another student in the group to serve as a second contact (does not need to be a signatory)
- Date options
- Time (start to finish)
- Desired location
- Purpose of reservation (meeting or event)
- Approximate attendance

Contact Lorrie Klimoski at lklimoski@recreation.ucla.edu to make a reservation or apply to the UCLA Recreation Fund if you are having an event under Lorrie Klimoski.

PUBLICITY

Introducing



asucla

creative
services

let us help!

ASUCLA Creative Services is a new student resource that allows USAC student groups who have been allotted USAC Funding to request marketing materials to promote their events. Services include graphic design for logos, flyers, signage, banners, digital ads, stickers and buttons, as well as printing and mounting services. Funding for requests must first be approved by Student Government Accounting.



at a glance

1. Apply for USAC Funding
2. Plan out what creative services you'll need
3. Download and complete the request form for ASUCLA Creative Services
4. Submit your request and purchase order to USAC.IVP.CreativeServices@gmail.com for confirmation & approval.
5. Receive and approve your proofs from ASUCLA Creative Services

That's it! Your marketing materials are ready for your next event.

for detailed instructions and request form:

<http://asucla.ucla.edu/event-services/student-groups/creative-services/>

DAILY BRUIN



How do I publish an ad?

Just get the USAC requisition to the Daily Bruin Advertising Office and they will take care of your request!

How much does it cost: There is a USAC discount rate for student groups. Ad sizes can be adjusted to fit your budget, but sample prices are as follows.

FULL PAGE: \$1020	A large rectangle divided into six equal columns. A text box in the top left corner says: "6 columns x 20" = 120 column inches".
HALF PAGE: \$510	A rectangle divided into two equal horizontal sections. The top section is divided into five equal columns. A text box in the top left corner says: "5 column x 12" or 6 column x 10" = 60 column inches".
QUARTER PAGE: \$255	A rectangle divided into two equal horizontal sections. The top section is divided into four equal columns. A text box in the top left corner says: "4 columns x 7.5" or 3 columns x 10" = 30 column inches".
EIGHTH PAGE: \$130	A rectangle divided into two equal horizontal sections. The top section is divided into three equal columns. A text box in the top left corner says: "3 columns x 5" or 2 columns x 7.5" = 15 column inches".

*NOTE: Additional charge for color: \$150

Who do I contact? There are three options.

- Contact the Daily Bruin Advertising Office directly
(310) 206-7562
campusads@media.ucla.edu
- Email your on-campus representatives
Alexandra Lopez: alopez@media.ucla.edu
- Stop by the Daily Bruin office in 118 Kerckhoff



How long in advance do I need?

Ad space reservations and payment should be in by noon two days prior to the run date. The req should be brought into 118 Kerckhoff at that time. If it's not ready, come in, and get one of the ad reps listed above to take the information down. The most important thing to do is reserve the space two days before by noon. Reqs can come in after the deadline, but it can cause problems in the ad running on time or correctly.

What kind of impact will this make?

The UCLA Daily Bruin is the #1 way to reach students on campus. The Daily Bruin prints 9,000 papers Monday through Thursday and 5,000 papers on Fridays. The Daily Bruin also provides online options for advertising on Dailybruin.com and Bruinwalk.com/professorreviews as well as flyering. Daily Bruin reps are trained to give you advice in ad layout, positioning, and planning to give you the most effective aid.

OUTDOOR

THE ONLY OUTDOOR ADVERTISING OFFERED AT UCLA

KIOSK ANATOMY

FRONT PANELS

11" x 17"

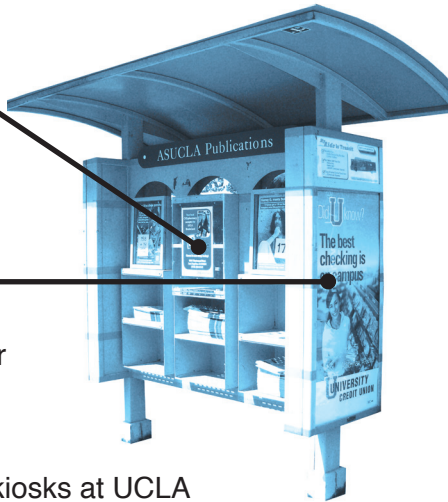
3 Available per Kiosk

LARGE PANELS

26" x 50"

2 Available per Kiosk

Posters can be printed for an additional \$60 each



25 kiosks at UCLA

All panels sold on first come, first-served basis.

RATES

FREQUENCY

LARGE PANEL

SMALL PANEL

1 PANEL

\$600/MONTH

\$400/MONTH

5+ PANELS

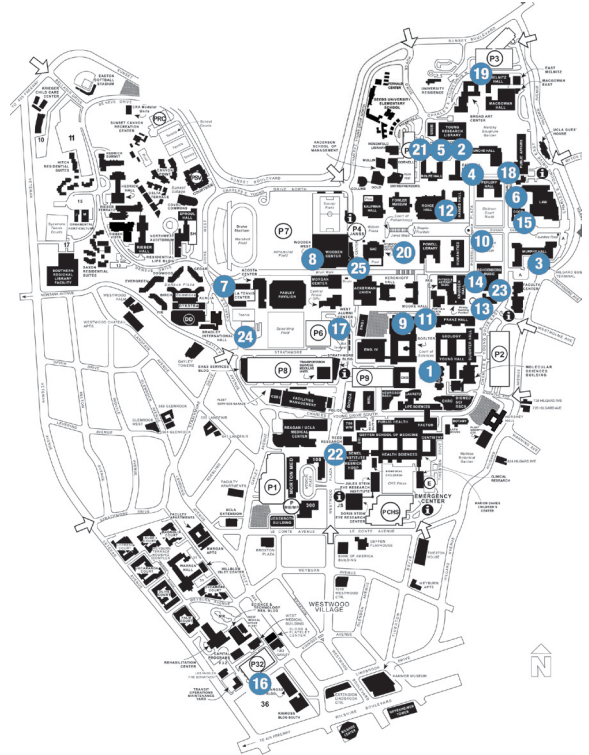
\$500/MONTH

\$300/MONTH

10+ PANELS

\$450/MONTH

\$200/MONTH

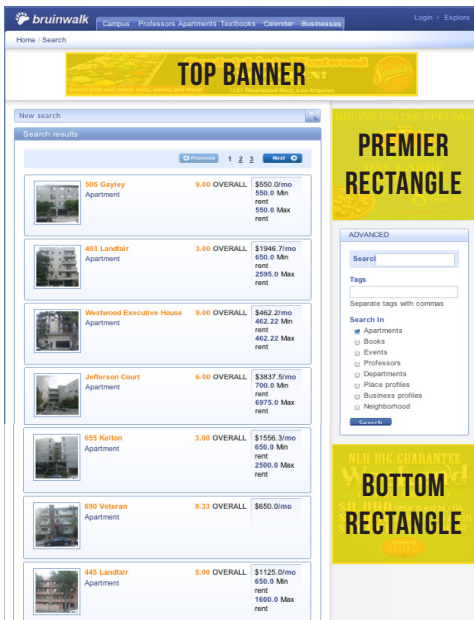


LOCATIONS AROUND UCLA

- | | | |
|-------------------|----------------------|-------------------|
| 1 Bombshelter | 10 Flag Pole | 18 LuValle |
| 2 Bunche | 11 Franz/MS | 19 Melnitz |
| 3 Hilgard Bus | 12 Haines | 20 Myerhoff Park |
| 4 Campbell Hall E | 13 Inverted Fountain | 21 North Campus |
| 5 Campbell Hall N | 14 Knudsen | 22 NPI |
| 6 Dodd | 15 Law School | 23 Schoenberg |
| 7 Drake | 16 Lot 32 | 24 Spaulding |
| 8 Wooden Center | 17 Lot 6 | 25 Westwood Plaza |
| 9 Engineering Top | | |

ONLINE

ONLINE BANNER ADVERTISING AT DAILYBRUIN.COM AND BRUINWALK.COM



RATES

OF PAGE VIEWS

PRICE

10,000

\$100

20,000

\$200

50,000

\$500

75,000

\$750

ON-CAMPUS HOUSING COUNCIL (OCHC)

There's no better way to publicize events than through the OCHC because

{ 95% of freshmen
75% of sophomores
50% of juniors
LIVE ON THE HILL. }

That's over 10,000 students!

FIRST, email the president requesting to come to a meeting. You can find contact info at www.hillcouncil.com

THEN, attend an OCHC meeting (Tuesdays at 8:00 PM) and bring sample fliers of your event to give the event a more concrete feel and assist with the approval process on requested funds.

THEN, present to OCHC why the hill is imperative to the success of your event.

If OCHC agrees to sponsor your event, you must distribute fliers to each representative. They will pass those to RAs, who will then distribute them to their residents and post them in the dorms.

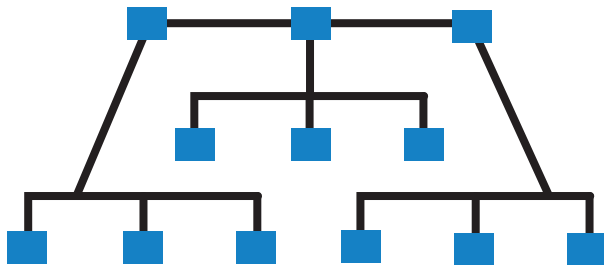
Various buildings also offer association funds!

If you're interested in advertising throughout campus, not just on the Hill, refer to the SOLE section.

RECRUITMENT

EXPAND YOUR STUDENT GROUP

You can reach out to students through all the publicity venues already mentioned, but we have some more great ideas.



Make a pact

with your three signatories to recruit three more people.

Then those new members will recruit three more people, creating a web that will keep your group continuously expanding.

Try co-programming with other well-established student groups so your student group name will share the attention.

The more exposure
you get,

THE BETTER.

MENTAL HEALTH RESOURCES

MENTAL HEALTH RESOURCES

ON CAMPUS

The Counseling Center: Counseling & Psychological Services (CAPS)

Location

John Wooden Center West
221 Westwood Plaza
Box 951556
Los Angeles, CA 90095-1556

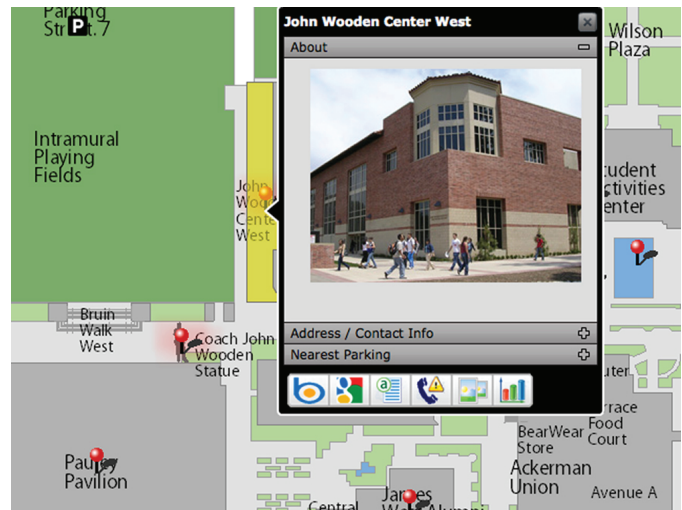
Phone

(310) 825-0768

24-Hour access to a counselor by phone

Hours of Operation

Monday to Thursday, 8 AM to 8 PM
Friday, 9 AM to 5 PM



UC Police Department (UCPD)

601 Westwood Plaza
Call (310) 825-1491 or 911
For anonymous reporting:
→ (310) 794- 5824
<http://www.ucpd.ucla.edu>



Ashe Center at UCLA

Main Line: (310) 825-4073
24/7 Nurseline: (877) 351-3457
→ *(For advice and information from a registered nurse after hours)*

OFF CAMPUS

Los Angeles Suicide Prevention Center

Call (310) 391-1253
24-Hour Crisis Hotline

National Suicide Prevention Hotline

Call 1-800-273-TALK (8255)
24-Hour Crisis Hotline, toll free

Santa Monica Rape Center

UCLA Medical Center, Santa Monica
1250 Sixteenth Street
Santa Monica, California 90404
(310) 319-4000



ALL of US

A CAMPAIGN TO RETHINK MENTAL HEALTH

Mission statement:

All of Us is a mental health campaign founded by UCLA undergraduate students to rethink the way mental health is viewed and treated on the UCLA campus and within the surrounding community through awareness, education, and advocacy.

We don't all deal with a mental illness, but we all have mental health.

Mental health is a *problem* in our community. According to the American College Health Association, half of all college students in the United States experience overwhelming stress that makes daily life difficult. By opening a dialogue we hope to break the stigma surrounding mental health. Through educational programs, workshops, and events we hope to educate our community about the importance of seeking help before a mental health concern turns into a mental health crisis. All of Us advocates for the expansion and diversification of mental health resources, and works toward enacting legislative change that provides greater support for individuals dealing with mental health issues.

Being an upstander:

An "upstander" is someone who recognizes when something is wrong and acts to make it right. When an upstander sees or hears about someone in need, they speak up and offer help. We all have an obligation to act when we see friends, classmates, and strangers on campus struggling with mental health issues. Whereas bystanders perpetuate the silence and stigma, being an upstander is being a hero. Upstanders help direct friends to appropriate resources, provide advice and comfort, and work to ensure that mental health services are accessible for all.

For tips on how to be an effective upstander, visit
<http://allofus.care/help-a-friend>

GET INVOLVED!

-Applications to join a committee will be accepted on a rolling basis. Committees include advocacy, conference, liaison, logistics, and marketing. Apply here:
tinyurl.com/allofus UCLA

-Join our mailing list and receive newsletters from All of Us by signing up on our website:
www.allofus.care.

-Interested in serving as a liaison from your student group and becoming an official campus partner? Email
allofus.care.ucla@gmail.com

CONTACT US:
Allofus.care.ucla@gmail.com
www.allofus.care

-Follow us on:



NEED HELP NOW?

-CAPS: (310) 825-0768
-The National Suicide Prevention Line: 1(800) 273-TALK (8255)

More resources available on our website

DIRECTORY OF STUDENT ORGS FOR COPROGRAMMING

COPROGRAMMING

The abundance of diverse student groups found on our campus allow for a unique blend of ideas, innovations, and connections to prosper. We want students to explore all types of clubs on campus and to learn more about similar organizations that will interest them. With this in mind, we encourage you as a student leader to initiate and forge these connections with other organizations that can lead your club to new heights! Listed here is a directory of the student organizations on campus. If you're interested in contacting any of these clubs, feel free to reach out to the assigned Student Group Liaison (SGL) and your assigned SGL.

Academic

Academy Health Student Chapter at UCLA
Alpha Lambda Delta/Phi Eta Sigma
Alumni Scholars Club
Asian American and Pacific Islander Studies Undergraduate Association
AVID Alumni Association
Bruin Guardian Scholars Program
Bruin Linguists Society
Cotsen Archaeology Association
Earth Planetary and Space Student Organization
Education Studies Student Association
Empirical Legal Scholars Association
Epidemiology Student Association
FTVDM Student Association
Gamma Sigma Alpha Greek Honor Society
Gates Millennium Student Association
Geography Association
Golden Key International Honour Society
Hispanic Scholarship Fund
Law and Philosophy Association
Linguistic Landscape Research Group
Mortar Board National Senior Honor Society
MSW Macro Caucus
National Society of Collegiate Scholars
Neuroscience Undergraduate Society
Pan African Nursing Student and Alumni Association
Periodontal Study Club
Phi alpha Theta
Phi Sigma Pi
Pi Sigma Alpha
Political Science Student Organization
Psi Chi International Psychology Honor Society
Psychology Interdisciplinary Events
Regents Scholar Society
SACNAS
SALMA: Save a Life, Move a Heart
School Social Work Caucus
Sigma Tau Delta
Society of Physics Students
Sociology Undergraduate Association

Statistics Students Association
Student Chapter American Society of Landscape Architect
Student Chapter of the Society of California Archivists
Student Members of the American Chemical Society
Students for Retention
Tau Sigma National Honors Society for Transfer Students
Undergraduate Anthropological Association
Undergraduate Communications Association
Undergraduate Investment Society
Undergraduate Mathematics Student Association
Undergraduate Spanish and Portuguese Association
VIPS Scholars
Women in history
Women in the Physical Science

Arts

Afrikan Arts Ensemble
Art History Undergraduate Student Association
Art Science Undergraduate Society
Art Shaped Box
ARTIFACTS
Bruin Film Society
Bruin Origami Society
Chinese Literature and Art Creation Association
Crank
Delta Kappa Alpha
Indulge in Design
Poetry Garden at UCLA
Socially Motivated Art
Student Committee for the Arts

Business

ALPFA at UCLA
Alpha Kappa Psi
Alpha Upsilon Consulting Group
Ascend
Beta Alpha Psi
Biotech Connection Los Angeles
Black Business Student Association
Bruin Actuarial Society
Bruin Hedge Fund
Bruin Investment and Trading Group

Bruin Marketing
Bruin Small Business Development Society
Bruin Sports Management
Bruin Value Investing
Business Law Association
Business Transfer Network at UCLA
California Creativity Event Planning
Chinese Business Society
Delta Sigma Pi Business Fraternity
Economics Roundtable
Edubase at UCLA
Financial Data Technologies Investment Club
Future Business Leaders of America
Global Business Connection
Latino Business Student Association
Pi Sigma Epsilon
Sigma Eta Pi
Sports and Entertainment Business Network
Student Accounting Society
TAMID Group
Three Day StartUp
Undergraduate Business Society

Career Planning

Advanced Degree Consulting Club
Alpha Chi Sigma
American Institute of Architecture Students
Armenian Pre-Law Students Associations
Black Law Student Association
Black Pre-Law Association at UCLA
Bruin Advertising and Marketing Team
Bruin Asset Management
Bruin Entrepreneurs
Bruin Geological Survey
Bruin Investment Banking
Bruins for Urban Design and Development
Career Assist Club for Chinese Students
Criminal Justice Society
Entertainment Law Association
International Society of Professional Development
Kappa Alpha Pi: Pre Law Fraternity
Korean Job Search
Mock Trial
NASW Student Chapter
Pre-Law Society
Student Alumni Association
Women's Pre-Law Association
World Arts and Culture Undergraduate Society

Cultural

Alpha Epsilon Omega Fraternity
Alpha Epsilon Pi Fraternity
American Indian Student Association

Armenian Students' Association at UCLA
Association of Chinese Americans
Association of Hmong Students
Bangali Students Association
Beta Delta Alpha Fraternity
Bosnian-Croatian-Serbian Club
Brazilian Student Association
Bruins for Israel
Celtic Colloduium
Chinese Culture and Traditions Society
Chinese Student Association
Chinese Students and Scholars Assn
Dialogue Society
Embrace All Race
Epsilon Alpha Sigma Sorority
EuroBruins
Gamma Zeta Alpha Fraternity
German Club at UCLA
Grupo Estudiantil Ozaqueno
Grupo Folklorico de UCLA
Habesha Student Association
Hanoolim:Korean Cultural Awareness Group at UCLA
Hindi-Urdu Log
Hui O 'Imiloa
Indian Student Union
Indonesian Bruins Student Association
INDUS at UCLA
International Solidarity with Iranian Civil Right's Movements
Iranian Student Group
Italian Club
J Street
Japan-America Language & Culture
Japanees Student Association at UCLA
K-Pop International Student Association
LAdino
Lambda Theta Alpha Latin Sorority
Lambda Theta Nu Sorority
Lambda Theta Phi Latin Fraternit
Le Cercle Francophone
Liberty in North Korea
Malaysian Students Association
MEChA de UCLA Movimiento Estudiantil Chicana/o de Aztlan
Mexicanos
Mixed Student Union
Multi-Interest Greek Council
Muslim Student Association
Muslim Union
Night of Cultura
Nikkei Student Union
Nu Alpha Kappa Fraternity
Pacific Islands Students Association
Pakistani Students Association

Phi Lambda Rho Sorority
Romanian Club
Russian Club
Samahang Pilipino
Sigma Alpha Epsilon Pi
Sigma Lambda Beta International Fraternity
Sikh Relief
Sikh Student Association
Singapore Student Association
Social Welfare Black Caucus
Students for Diversity
Taiwanese American Union
TASC Initiative
Teo-Chew Association
Thai Smakom
The Pomegranate Initiative
Turkish Student Association
United Afghan club
United Khmer Students
Unin Salvadorea de Estudianted Universitarios
Vietnames Language and Culture
Vietnamese Student Union

Dance

Ambience at UCLA
Armenian Dance Group at UCLA
Ballroom Dance Club and International Folk Dance Club
Bruin Bhangra
Bruin Line Dancing
Bruin Shuffle
Chinese Cultural Dance Club
Diversifying Mathematics and Physics
Dragon Dance Team
Foundations Choreography
Global Dance Club
Historical Ballroom Dance Club
ICARUS Contemporary Dance Company
Nashaa Hindi Film Dance Team
Raas Team
Salsa Society
Social Dance Club
Step Club
Synthesis Dance Theater
Taara
The Art of Isolation and Animation Dance Organization
The Swing Club

Educational

Access Granted
Afrikan Education Project
Alliance through Intergroup Dialogue
American Constitution Society
Amnesty International at UCLA

Bearing Witness
Bruin Toastmasters
Bruins for Animals
Bruins Without Borders
Classical Society at UCLA
Cognitive Science Student ASsociation
Collaboration in Undergraduate Research Enrichment
Colleges Against Cancer
Colloquium for Oral and Popular Tradition Studies
Community Emergency Response Team
Comparative Literature Undergraduate Association
Disability Lw Society
EmpowHER
Feminist Theory REading Group
Gerontology and Geriatrics Interst Group
Global Development Lab at UCLA
Habitat for Humanity
Hands On
Humanity First
IDEAL Leaders Association
Improving Dreams, Equality, Access and Success
Indo-European Studies Student Alliance
Interaxon
Intergroup Dialogue Facilitation Caucus
Intergroup Relations Program
International Affairs Student Association
Labor Forum Book Club
Math and Biology Society
Model United Nationa
National Lawyers Guild
Non-Traditional Students Network
Pediatric Aids Coalition
Pilipino Transfer Student Partnership
Planners of Colo for Social Equity
Roosevelt Institute
Science & Food
Science Olympiad
Student Trasnfer Opportunity Mentorship Program
Students For Education reform at UCLA
Thought Lounge
Translation Studies Working Group
Turning Point USA
United Nations Youth Association
Univrsity Cooperative Housing Association
University Culture & Life Abroad
We Speak English Project

Engineering

3D4E
Advancing Women in Science and Engineering
American Indian Science and Engineering Society
American Institute of Aeronatuics and Astronautics

American Society of Civil Engineers
 American Society of Mechanical Engineers
 Arnold Air Society
 BiochemASE
 Biomedical Engineering Society
 Bruin Amateur Radio Club
 Bruin Spacecraft Group
 Chi Epsilon, The Civil Engineering Honor Society
 Design/Build/Fly
 Earthquake Engineering Research Institute Student Chapter
 Engineering Ambassador Program
 Engineering in Medicine and Biology Society
 Engineering Society of UCLA
 Engineers Without Borders
 Eta Kappa Nu
 Formula SAE
 Hyperloop Club
 Institute of Electrical and Electronic Engineers
 Institute of Transportation Engineers
 International Society for Pharmaceutical Engineering
 Korean-American Scientists and Engineers Association
 MentorSEAS
 Middle Eastern Professional Society
 National Society of Black Engineers
 Optical Society of America/Society for Optical Engineering Student Chapter
 Phi Sigma Rho
 Society of Asian Scientists and Engineers
 Society of Automotive Engineers
 Society of Petroleum Engineers
 Society of Women Engineering
 Society of Latino Engineers and Scientists
 Supermileage Vehicle SAE
 Synthetic Biology Club
 Tau Beta Pi
 Technical Entrepreneurial Community
 The Society for Information Display Student Branch
 Theta Tau
 Triangle
 United Korean STEM Association
 Upsilon Pi Epsilon
 X1 Robotics

Environmental

Bruin Naturalists Club
 California Public Interest Research Group
 Climatepedia
 Concerned Students for Society
 Dig: the Campus Garden Coalition
 E3: Ecology, Economy, Equity
 E3's Ecochella
 Education for Sustainable Living Program
 Environmental Law Society

Environmental Student Network
 Food Law Society
 Fossil Free at UCLA
 Green the Greeks
 Marine Life Preservation Society
 Renewable Energy Association
 Sustainable Youth
 The California Geotechnical Engineering Association

Greek Life

Alpha Chi Omega Sorority
 Alpha Delta Pi Sorority
 Alpha Epsilon Phi Sorority
 Alpha Gamma Alpha Sorority
 Alpha Gamma Delta Sorority
 Alpha Kappa Alpha Sorority
 Alpha Phi sorority
 Asian Greek council
 Beta Theta Pi
 Chi Alpha Delta Sorority
 Chi Alpha Phi
 Chi Delta Theta Sorority
 Chi Omega Sorority
 Circle of Sisterhood
 Delta Delta Delta
 Delta Gamma Sorority
 Delta Lambda Phi
 Delta Sigma Phi Fraternity
 Delta Sigma Theta Sorority
 Delta Tau Delta
 GAMMA: Greeks Advocating the Mature Management of Alcohol
 Gamma Phi Beta Sorority
 Gamma Rho Lambda Society
 Greek Week
 Interfraternity Council
 Kappa Alpha Psi Fraternity
 Kappa Alpha Theta
 Kappa Delta Sorority
 Kappa Kappa Gamma Sorority
 Kappa Kappa Psi
 Kappa Psi Epsilon Sorority
 Kappa Sigma
 Lambda Chi Alpha Fraternity
 Lambda Phi Epsilon Fraternity
 National Pan-Hellenic Council
 Omega Sigma Tau
 Order of Omega Greek Honor Society
 Organization of African-American Students Excelling in STEM
 Panhellenic Council
 Phi Delta Theta Fraternity
 Phi Kappa Psi Fraternity
 Phi Kappa Sigma

Pi Beta Phi
 Pi kappa alpha Fraternity
 Pi Kappa Phi
 Rho Lambda Panhellenic Honor Society
 Sigma Alpha Epsilon Fraternity
 Sigma Alpha Mu Fraternity
 Sigma Alpha Zeta Sorority
 Sigma Chi Fraternity
 Sigma Delta Sigma Sorority
 Sigma Gamma Rho Sorority
 Sigma Lambda Gamma National Sorority
 Sigma Nu Fraternity
 Sigma Phi Epsilon Fraternity
 Sigma Pi Beta Fraternity
 Sigma Pi Fraternity
 Sigma Pi Sigma Psi Sorority
 Tau Theta Pi
 Theta Chi Fraternity
 Theta Delta Chi Fraternity
 Theta Kappa Phi Sorority
 Theta Xi Fraternity
 Zeta Beta Tau
 Zeta Phi Beta Sorority
 Zeta Phi Rho Fraternity

Health and Wellness

AA
 Abilities Beyond Limitations
 Active Minds
 AIDS Ambassadors at UCLA aquidsambassadors@gmail.com
 Al Annon
 Apha Epsilon Delta- The Health Pre-Professional Honor Society
 Armenians for Health Advancement
 Bhagat Puran Singh Health Initiative
 Black Hypertension Project
 Bliss and Wisdom International at UCLA
 Bridging Minds Through Art
 Bruin Beans Health Club
 Bruin Consent Coalition
 Bruins for Recovery
 Bruins Movin'
 Bruins Public Health Club
 Built Environment and Public Health Council
 Clothesline Project at UCLA
 DiaBeaters
 Donation of Tissues and Organs
 FACE AIDS at UCLA
 Fitness Improvement Training Through Exercise and Diet
 Free Minds United
 Innergy
 Latino Student Health Project
 Live Action at UCLA

Living is for Everyone
 Master of Social Welfare Self-Care Caucus
 National Alliance on Mental Illness on Campus
 Pilipinos for Community Health
 Random Acts of Kindness
 Sex Squad
 Spoon University
 Student Food Collective
 Student Nurse Fitness Club
 Student Nutrition Advocacy
 SWC AIDS Awareness
 SWC Body Image
 SWC Bruin Run/Walk
 SWC CPR/FA Program
 SWC EARTH
 SWC Gender Health
 SWC Health, Nutrition, & Fitness
 SWC Student Education and Research of Contemporary Health
 SWC Student Health Advocates
 SWC Total Wellness
 This Club Saves Lives
 Veg-Heads
 Veterans Service Organization
 Youth Movement Against Alzheimer's

Journals

Architecture & Urban Design Student Journal and Culture Committee
 Asian Pacific American Law Journal
 Bozalta journal
 Chicana/o-Latina/o Law Review
 Critical Planning Journal
 Echo: A Music Centered Journal
 Entertainment Law Review
 Ethnomusicology Review
 Hammer Student Association
 Indigenious Peoples' Journal of Law, Culture & Resistance
 InterActions
 Mediascape
 Morning Sign Oit
 Parrafo
 Philosophy Club
 Pre-Health Research Initiative
 Regeneracion Tlacuilolli
 Ufahamu: A Journal of African Studies
 Undergraduate Science Journal

Media

Al-Talib Newsmagazine
 Beauty & Cosmetics at UCLA
 Beyond the Bruin
 Bruin Roast
 Change
 Denizen Magazine

Ed2010 at UCLA
FAST
Fem Newsmagazine
Film & Photography Society
Ha'am: UCLA's Jewish News Magazine
Her Campus
International Student Film Association
Japanese Animation Club
La Gente Newsmagazine
NOMMO Newsmagazine
Pacific Ties Newsmagazine
Photography Club
Satyr
Student Journalist Association
The Paper Mixtape Magazine
Westwood Enabler

Medical

Alliance of Jamaican & American Humanitarians Volunteers
Alpha Tau Delta
American Association of Women Detists
American Medical Student Asociation
American Medical Women's Association Undergraduate Division
APA Health CARE
Bioethics Brigades
Black Pre-Health Organization
Book Club at UCLA
Bruin Allies for Duchenne
Bruin Medical Entrepreneurs
Chinese Dental Student Association
Clinical and Translational Science Institute
Clinical Dental Outreach
Community Medicine in Koreatown
Comparative Healthcare International Program at UCLA
Delta Epsilon Mu
Discovering Dialysis
Doctors at Reach
Elegant Mind Club
Emergency Medicine Research Associates
Fellowship for International Service and Health
Flying Samaritans
Foundation for International Medical RELief of Children
Genetic Counseling Student Interest Group
Global Medical Brigades at UCLA
Global Medical Traning
GlobeMed
Happy Feet Clinic
Health Outreach and Pre-Medical Experience
Homeless Not Toothless
iCareX: Think Innovation
Inglewood Clinic Group
Innovation in Health

Lavender Health Alliance
Los Angeles Health Consent
Maternity Nursing Interest Club
Measuring to Achieve Patient Safety
Medical Experience through Service in Healthcare
Medical Friends at UCLA
Medical Student Research Committee
Medical, Educational Missions and Outreach
Medication Assistance Program
MEDLIFE at UCLA
Men in Nursing Club
Minority Association of Pre Health Students
Mobile Clinic Project
Nursing Students at UCLA
Operation Mend Undergraduate Association
Operation Smile Student Club
Pacific Islanders for HEALTH
PANGAEA
PASHA: Persian American Society for Health Advancement
Pediatric Interest Club
Pediatrics Hermatology/Oncology Student Group
Persian Dental Student Association
Phi Delta Epsilon
Pre-Dental Student Outreach Program
Pre-Medical Peer Association
Pre-medical Undergraduate Learning through Shadowing Experience
Pre-Optometry Society at UCLA
Pre-Pharmacy Society
Pre-Vetinary Society
Project Health
Proect Sunshine Chapter
Research Education Neurodegeneration Offering Understanding and Solutions
Saving Hearts Foundation
Shot @ Life
Smile Train
Society and Genetics Undergraduate Organization
Society for Physical and Occupational Therapy Club
Students for integrative Medicine
Students for Justice in Paletine
Team HBV
Together Educating and Advocating Community Health
UMMA colunteer Project
Vietnamese Community Health Project
Vietnamese Dental Student Association
Volunteers Around the World Medical Outreach

Music

Awaken A Cappella
Awechords
Bands and Artists at UCLA
Bella Voce A Cappella
Bruin Harmony

Cadenza A Cappella
Chinese Music Ensemble
Choral Union Associates
Deviant Voices A Cappella
Electronic Dance Music Club
Game Music Ensemble
Kyodo Taiko
Medleys A Cappella
Music Club
Music Cognition Coalition
Phi Mu alpha Sinfonia Beta Psi
Random Voices
Rap Music Club
Resonance A Cappella
Rivals in Harmony
Road to Damascus
Rocket Project
ScatterTones
Signature A Cappella
SouLA A Cappella
Tau Beta Sigma-Epsilon Kappa
Tinig
UCLAradio.com
United Korean Voice
Youthphonics
Yukai Daiko

Political

Bruin Democrats
Bruin Intercollegiate Studies Institute
Bruin Libertarians
Bruin Repulicans
Bruins for Bernie
Bruins for Black Empowerment
Bruins for Reproductive Justice
California Freedom Project
Federalist Society
No Labels at UCLA
Olive Tree Initiative
Student Coalition Against Labor Exploitation
Student for Rubio
Students Supporting Israel
Vote For Our Future

Recreation

Bronies@UCLA
Bruin Freestyle Soccer Academy
Chess Club
Cooking and Baking Club
Counter Strike
Disney Club
DOTA 2
Enigma: The Science Fiction, Fantasy, and Gaming Club

Fantasy Sports Club
Go Club
Hide and Seek Club
Hiking Club at UCLA
League of Legends
Magic and Illusion Student Team
Magic: the Gathering
Nerdfighters
SCUBA club
Super Smash Bros Club
The College Bowl Club

Religious

4Corners Christian Fellowship
Acts2Fellowship
Agape Christian Fellowship
Alpha Delta Chi Sorority
Alpha Gamma Omega Fraternity
Alpha Omega
Asian American Christian Fellowship
Baha'i
Black Campus Ministries
Bruin Alliance of Skeptics and Secularists
Bruin In Christ Alone Ministry
Campus Adventist Network
Campus Crusade for Christ
Catholic Students Association
Chabad
Chi Alpha Christian Fellowship
Chinese Christian Fellowship
Chinese Christian Students
Christian Law Student Association
Christian Students
Coptic Orthodox Christian Club
Crossroads Campus Ministries
Destino
Episcopal Campus Ministry
Every Nation Campus Ministries
Grace on Campus
Grace Stewards for Christ
Greek Crossing at UCLA
Greek Intervarsity
Hillel Jewish Students Association
Immanuel Community Fellowship
InterVarsity Bruin Christian Fellowship
Jewish Learning Initiative
Korean Cmapus Crusade for Christ
Korean Bible Study
Korean Christian Association
Korean-America Cmapus Mission
Kyrie Eleison
Latino Fellowship

Life Christian Fellowship
Life Christian Fellowship International Student Ministry
Light Korean Campus Ministry
Light of Life Campus Ministries
Navigators at UCLA
Orthodox Christian Fellowship
Prism
Reformed University Fellowship
Rejoyce in Jesus Campus Fellowship
Remnant Ministry
Rooftop Campus Fellowship
Santa Monica Onnuri Church
Society of St. Vincent de Paul at the University Catholic Center
Soka Gakkai International
Tree of Life Fellowship
University Catholic Conference of California
University Presbyterian Church
Vine Bible Study
Viral Collective & House of Prayer

Service

Achievement Scholars Club
Adelante Tutorial Program
Alpha Phi Alpha Fraternity
Alpha Phi Omega
American Red Cross Club
Amigos de UCLA
Asian American Tutorial Project
Autism Speaks U
Barrio Youth Alternatives
Best Buddies
Black/Latino AIDS Project
Books Beyond Bards
Books for All
Bringer of Hope Foundation
Bruin Belles Service Association
Bruin Counsel
Bruin Initiative
Bruin Law & Advocacy Club
Bruin LIGHTS
Bruin Partners
Bruin Scouts
Bruin Staters: Girls State Alumnae and Friends
Bruin Tzu Ching
BruinHope
Bruins for Nonprofits
Bruins for Ronald McDonald House Charities
Bruins for Spiritual Care
Bruins in Focus
Bruins Reforming Incarceration Through Education
Bruins Spread Smiles
Building Engineers and Mentors at UCLA

Camp Kesem
CampMed
Casa Heiwa and Angelina Mentorship Program
Central Valley Project
Chicanos/Latinos for Community Medicine
China Care Bruins
Circle K
CityLab
Coaching Corps at UCLA
College EDge at UCLA
Compassion International
disABILITIES
Drug Outreach & Education Program
El Centro Legal Clinics
Feed Them at UCLA
Food Recovery Network
Furnish the Homeless
Glendale Learning Program
Global Brigades at UCLA
Global Human Rights Brigades
Heal LA
Hermanas Unidas
Hermanos Unidos
Hidden Road Initiative
HOLA Project at UCLA
Hunger Project
IMHOME
Impact LA
Incarcerated Youth Tutorial Project
Innoworks at UCLA
iVolunteer
JANRAH
Jumpstart
Kids Korner
Kitabu-Arikan Library Project
Leadership and Educational Advancement Program
Leadership Education in algebraic development
Literate Earth Project at UCLA
LITTLE BRUINS
Los Angeles Student Educational Outreach
Mental Health Initiative
Mentors Empowering and Nurturing Through Education
Mentorship and Health Education Program
Mentorship Program
MoneyThink
No-Kill initiative
One to One
Peer Advancement Community for Teens
Phi Beta Sigma Fraternity
Pilipino Recruitment and Enrichment Program
Pre-Health Outreach for Undergraduate Diversity
Preparing and Reinforcing Our Future's Engineers and Scientists

Project 1
Project Brainstorm
Project Concern International at UCLA
Project Literacy
Project MAC
Project RISHI
Project Working for Immigrant Literacy Development
Projecting Minds
Proyecto de Jornaleros
Public Health Nutritio Club
Raza Youth Conference
Raza Youth Empowerment Project
Rockin' Autism
Rotaract Club
SANAA: Social Awareness Network for Activism through Art
Save Youth
School on Wheels
ACCOPE: Students for Community Outreach, Promotion and Education
SLAM!
Society of Imperial Valley Bruins at UCLA
Sound Body Sound Mind Undergraduate Association
SOVA Club at UCLA
Special Olympics
Stamps Scholars Society
Student Giving Committee
Students for Community Service
Swipe Out Hunger
Synapse
Teaching and Sharing Skills to Enrich Lives
The Bruin Experience
The National Society of Empowered Youth
Topspin and Undercut
Tutors at reach
UCLA Unicamp
UNICEF
Volunteer income Tax Assistance
Watts Tutorial Program
Women and Youth Supporting Each Other
Writer's Den
Youth Empowerment and Support

Social

Bruin Duelists' Association
Bruins Brewin' Tea
Chinese Union
Hong Kong Student Society
Lebanese Social Club
Parenting Students at UCLA
Rally Committee
SMC to UCLA Network
STEM Transfer Community
Taiwanese Student Association

Transfer Student Alliance
Transfer Undergraduate Students of Hillel
Tri Chi

Technology

Association for Computing Machinery
Association for COmputing Machinery-Women
Association for Information Science and Techonology Student
Augment
Battlecode
Bitcoin Club at UCLA
Bruin Game Studios
Collaboration for Liberation in Technology Lab
Collaborative Game Development
Linux Users Group

Theater

Act III Theater Ensemble
CFAN Chinese Theatre Group
HOOLIGAN Theatre Company
Lapu, the Coyote that Cares Theatre Company
Rapid Fire Improv
Shakespeare Company at UCLA
Shenanigans Comedy Club
Undergraduate theater Council
Young Storytellers Foundation College Chapter

African American

Afrikan Activist Association
Afrikan Mens Collective
Afrikan Student Union
Afrikan Women's Collective
Black Bruin Transfer Success
Harambee Council
Sister2Sister

LGBTQI

Act for Equality
BlaQue
Fluid
La Familia De Bruins
OUTLaw
Pan-Asian Queers
Qscholars of UCLA
Queer Alliance
QueerxGirl
Transgender UCLA Pride

International

Accents are Sexy at UCLA
Bilingual Writers Club @ UCLA
Bridges International
Global Leaders ASsociation

OFFICE OF THE INTERNAL VICE PRESIDENT **ivp**

The Office of the Internal Vice President is one of the three executive offices in USAC, UCLA's student government. The IVP is the executive liaison among our dynamic community of 28,000 undergraduates, over 1000 student organizations, administration, and campus entities. The IVP Office works to increase transparency of USAC, expand campus safety resources, connect students and student groups to campus resources, and advocate for students at an administrative level. For more information, please contact the IVP at usaivp@asucla.ucla.edu.



STUDENT GROUP LIAISONS



Contact us at:
ivp.executivesgl.ucla@gmail.com

The **Student Group Liaison** program is an initiative of the Undergraduate Students Association Council (USAC) Internal Vice-President's (IVP). As a committee we seek to provide institutional knowledge, add value, and improve the student leader experience and capacity in managing their organization.

We can help your student groups with the following services:

- USAC funding process
- Connecting with administrators
- Co-programming with other related campus organizations.
- Contacting different entities within USAC.
- Connecting student groups with marketing resources.
- Assisting student groups with leadership development within the organization