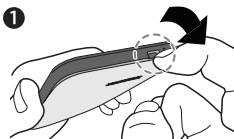


HTC Desire™ 320

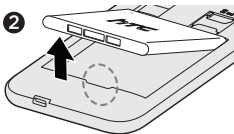
Inserting the micro SIM and storage cards

IMPORTANT: USE A STANDARD MICRO SIM ONLY.

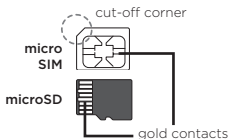
Do not cut a regular SIM and insert it into the micro SIM slot, since the card may get stuck in the slot. If you're using a nano SIM card with a card adapter, never insert the adapter when it's empty. This may damage the card slot.



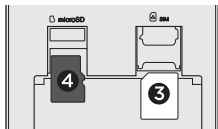
1. With the phone facing away from you, open the back cover from the notch at the bottom (where the charger connector is located).



2. Before inserting the micro SIM and microSD™ cards into the slots, you need to remove the battery.

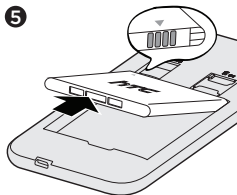


3. Insert the micro SIM card into the micro SIM slot, with the card's gold contacts facing down and cut-off corner facing in.



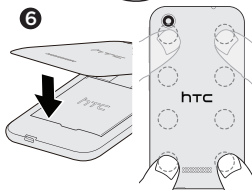
4. Insert a microSD card into the storage card slot with its gold contacts facing down.

5



5. Reinsert the battery.

6



6. To place the back cover, align the phone onto the top part of the back cover first. Then press the sides and the lower part down from top to bottom to lock the cover into place.

Want some guidance on using your phone?

Go to www.htc.com/support/ to find the user guide, FAQs, latest news, and more.

© 2014 HTC Corporation. All rights reserved.

HTC, the HTC logo, and HTC Desire are trademarks of HTC Corporation. microSD is a trademark of SD-3C LLC. All other company, product and service names mentioned herein are trademarks, registered trademarks or service marks of their respective owners.

