 Hytera <i>Hytera Communications Corp., Ltd.</i>	Doc Code: ZGB-20010905
	Doc Version: 2.00
	Total Pages: 12

Hytera USB Driver Installation Application

User Guide

Revision

[illegible]

Contents

Revision.....	2
Contents	3
1. Overview.....	4
1.1 OBJECTIVE.....	4
1.2 BACKGROUND.....	4
1.3 SCOPE.....	4
1.4 INSTALLATION ENVIRONMENT.....	4
1 User Guide for Installing Hytera USB Driver.....	5
PART 1: INSTALLING DRIVER SOFTWARE.....	5
2.1 STEP 1:	5
2.2 STEP 2:	6
2.3 STEP 3:	6
2.4 STEP 4:	7
2.5 STEP 5:	7
2.6 STEP 6:	8
PART 2: INSTALLING HARDWARE	9
2.8 INSTALLATION PROMPT.....	9
3 Important Notice.....	10
3.1 INSTALLATION IS FORBIDDEN.....	10
3.2 INSTALLING ON WINDOWS 7 OR VISTA.....	11
3.2.1 RUN WITH ADMINISTRATOR'S PRIVILEGE.....	11
3.2.2. FOR SECURITY ALERT.....	11
3.2.3 AUTOMATICALLY INSTALLING HARDWARE	11
3.3 HARDWARE INSTALLATION PROBLEM.....	11
3.4 INSTALLING NEW HARDWARE WHEN KEEPING OTHER HYTERA USB DEVICE RUNNING.	12
3.4.1 KILL DEVICE-DETECTOR.EXE PROCESS.	12
4 Uninstall of driver installation application.	12
4.1 STEP1:	12
4.2 STEP 2:	12
4.3 STEP 3:	12

1. Overview

1.1 Objective

This manual explains the procedure of installing Hytera USB Driver.

1.2 Background

On some condition, it is difficult to install Hytera USB Driver manually and even may wrongly install the driver. The installation application helps to solve this problem.

1.3 Scope

This document is used for the users who need to install Hytera USB Driver.

1.4 Installation Environment

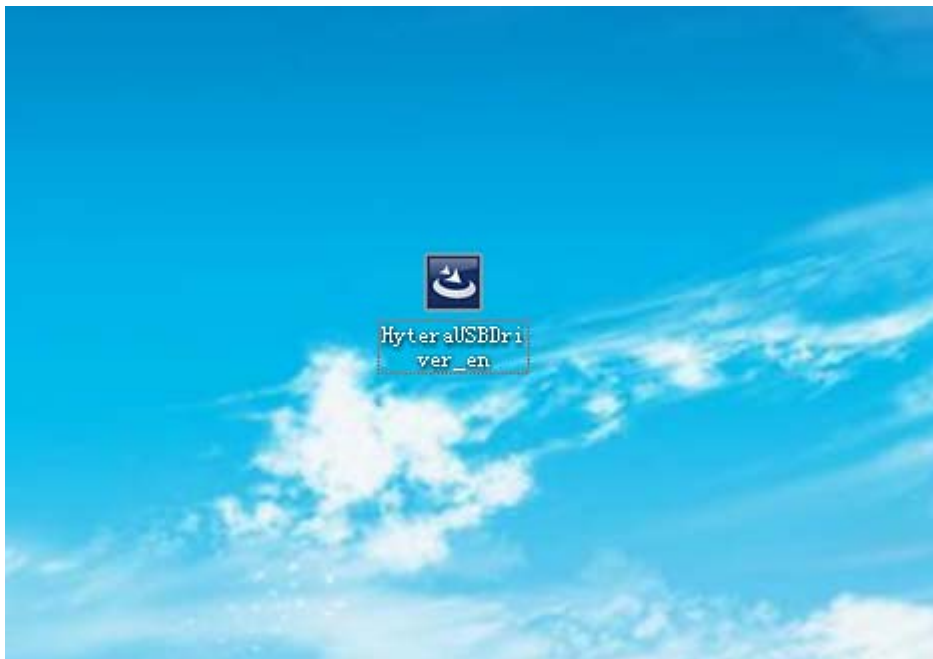
Windows XP, Windows Vista, Windows 7. The driver is only for use in 32 bit Operating Systems.

1 User Guide for Installing Hytera USB Driver

This chapter is only for reference. Normally you needn't read it and you can install the driver.

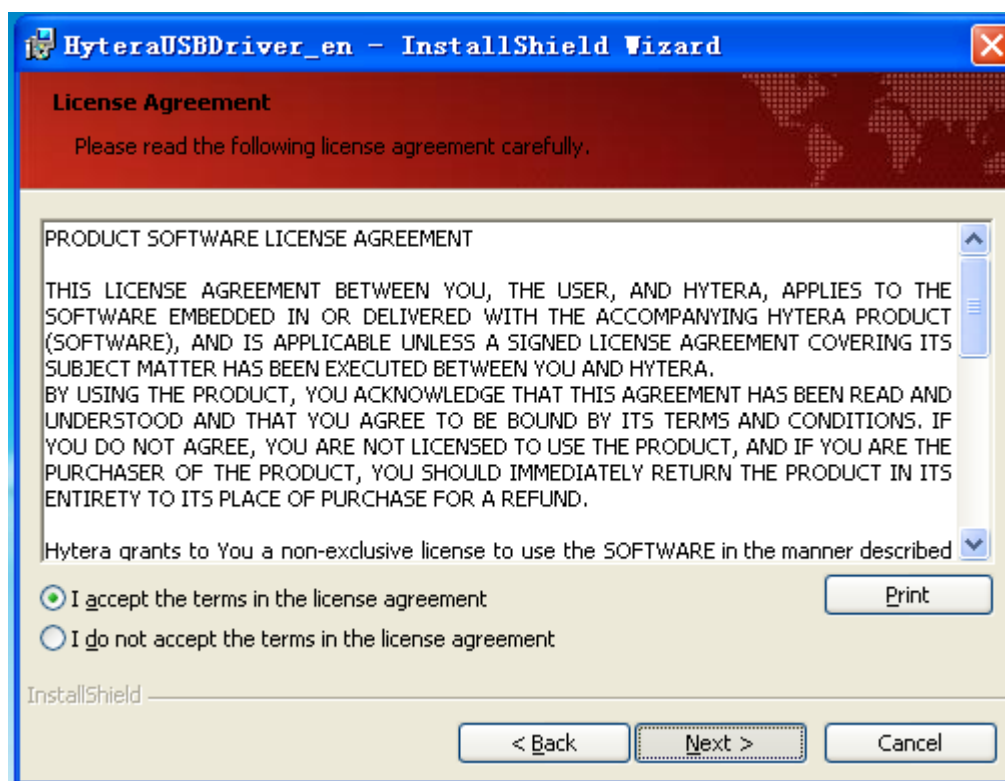
Part 1: Installing Driver software

2.1 Step 1:



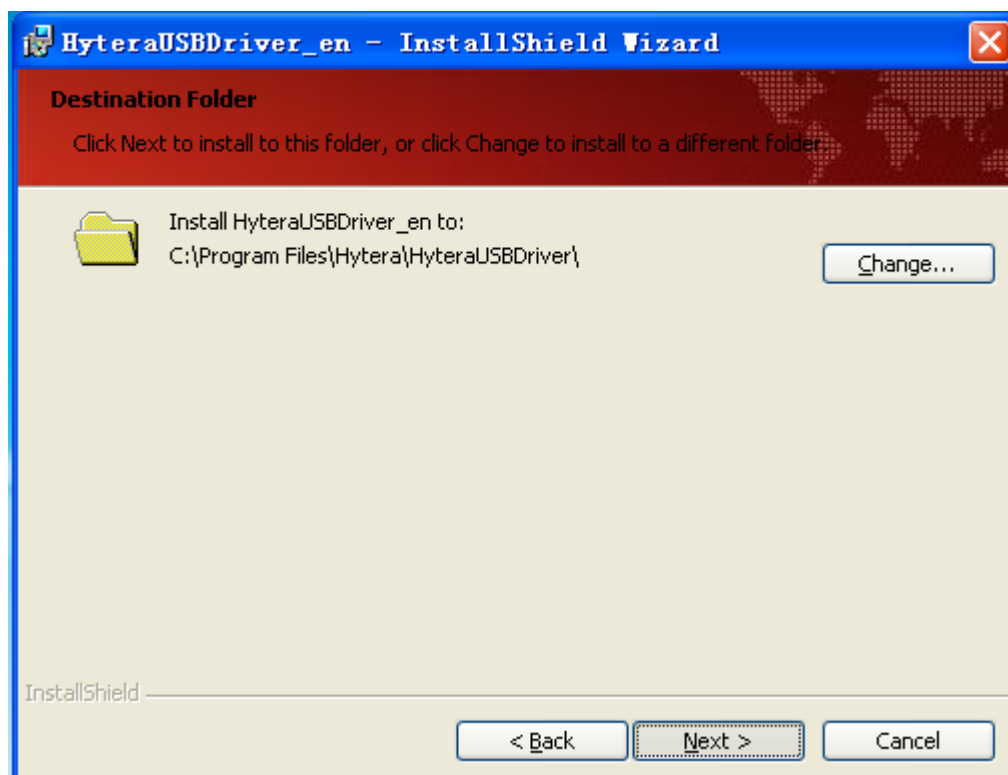
Double click the driver installation software icon.

2.2 Step 2:



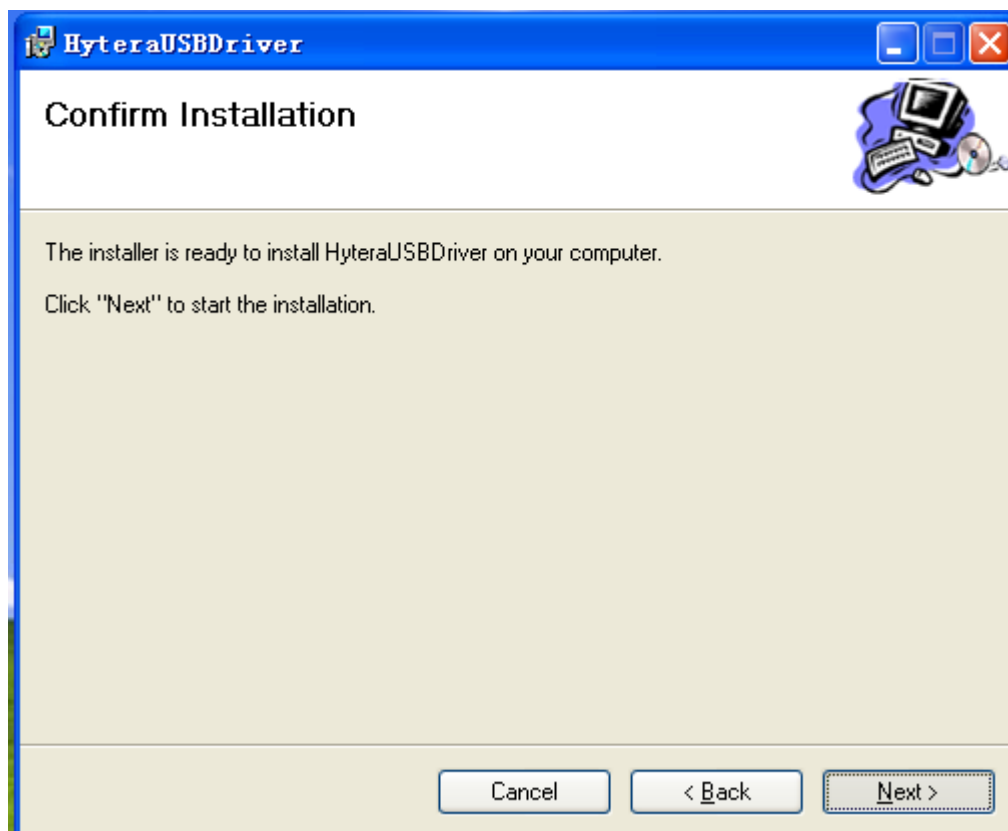
Select the first option, Click Next.

2.3 Step 3:



Select the destination folder path and click “Next”.

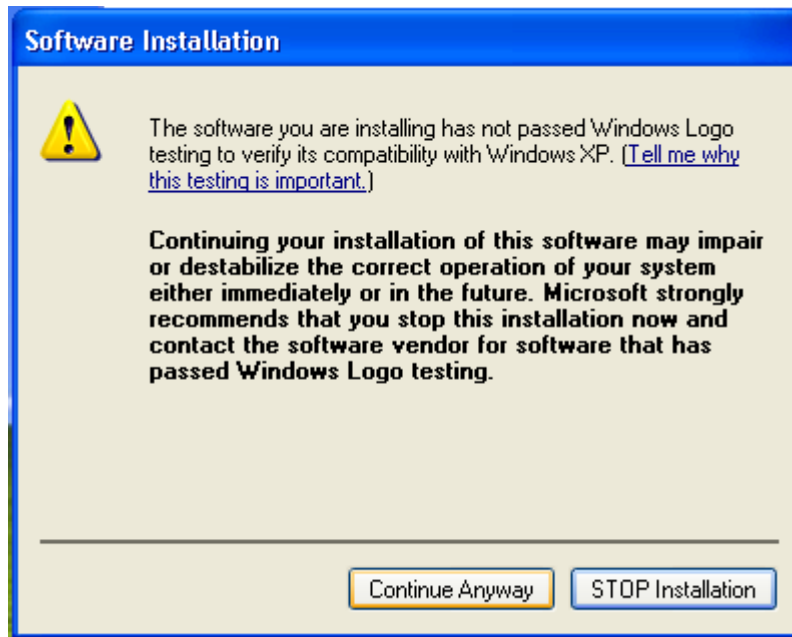
2.4 Step 4:



Click “Next”.

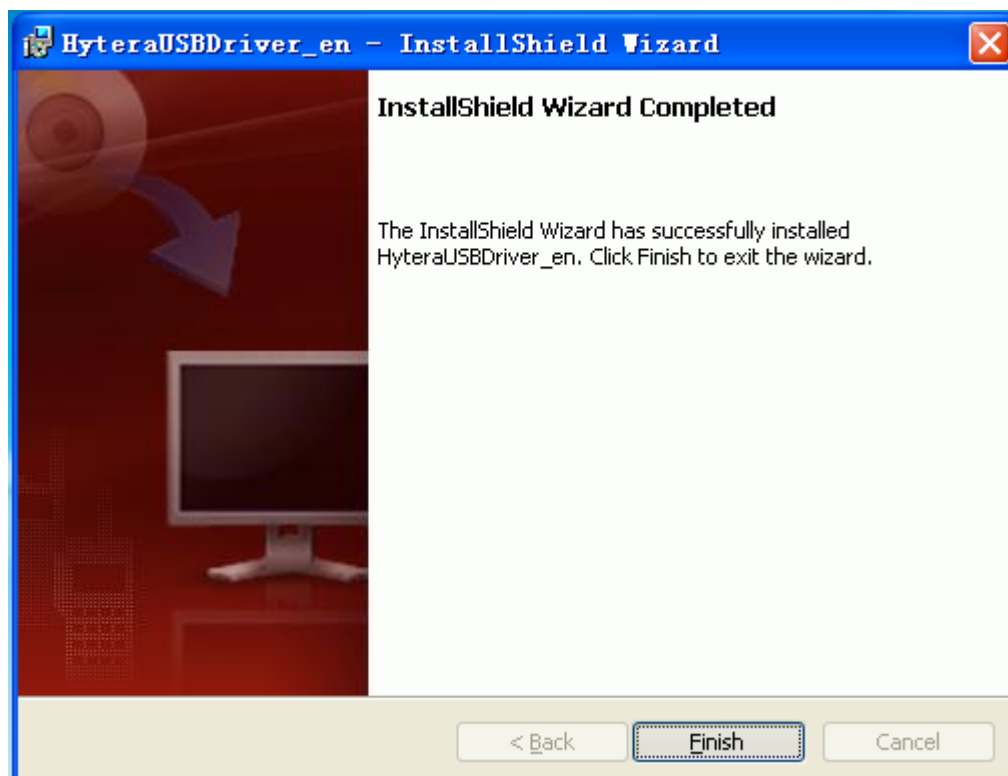
2.5 Step 5:

In English and Simple Chinese system, below pop up dialog will be operated automatically by the installation application. This explanation is for other systems.



Installation started. In the process, please select “Continue Anyway” when popping up dialogs like the above. According to different system, this kind of dialogs are 0 to 4 in total as there are 4 drivers to be installed in total. In Windows Vista and Windows 7, the dialog appearances are different, but please select “Continue Any Way”.

2.6 Step 6:



Click “Finish” to finish driver software installation. Then reboot your system according to system instruction.

Part 2: Installing Hardware

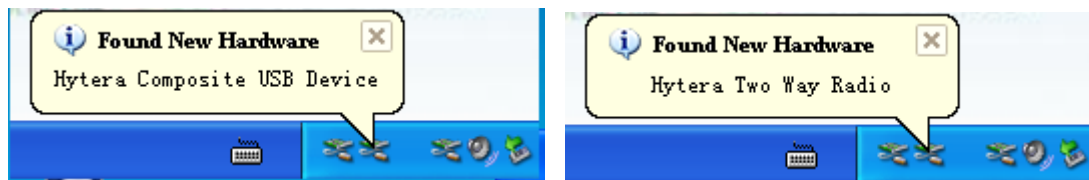
If you installed the driver software with device connected, the device hardware will also be installed on the connected USB port.

When you connect Hytera USB device on the USB port, it will be installed automatically by the installation application, users don't need to operate the "Find New Hardware" dialogs, it will be closed automatically after installation. The installation will be done on each USB port. After installation, please reboot your system to finish hardware installation.

For each USB port, hardware installation will be done once when the device is connected to the port the first time.

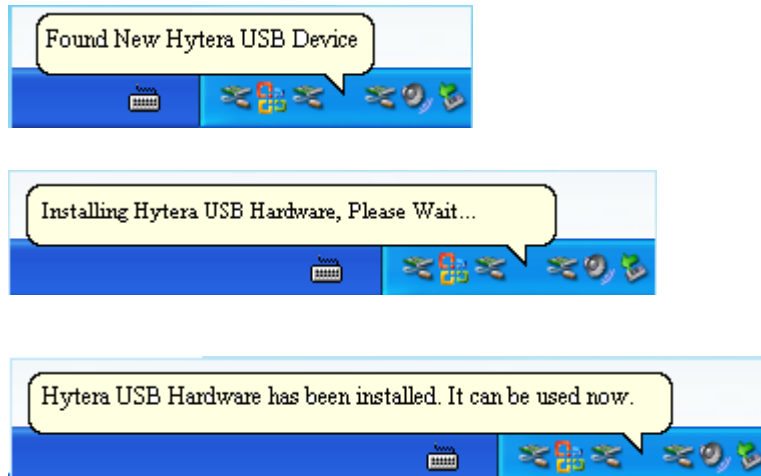
2.8 Installation prompt

During installing hardware, there are prompts of the procedure. Please close the below prompts like below to see the application's prompts.



and other similar OS prompts.

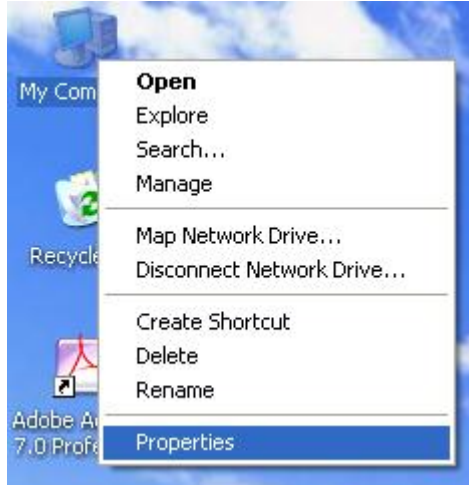
And then you can see the application's prompts are as below:



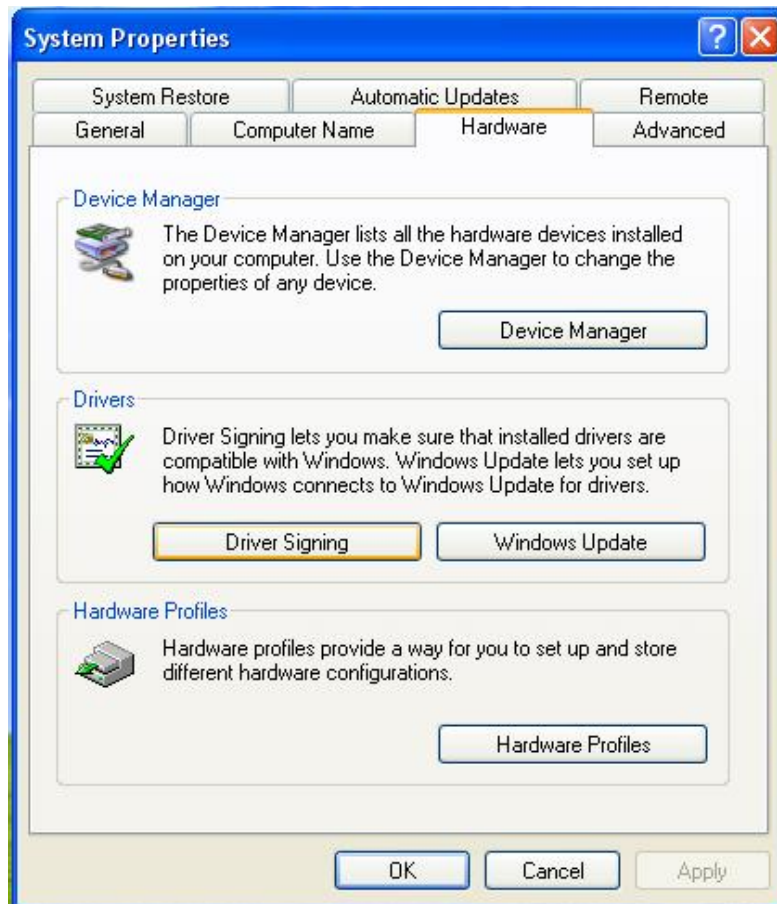
3 Important Notice

3.1 Installation is forbidden

If your system forbids installing drivers without signatures, please configure as shown below. After installing, you can change it back to its original setting.



- a) Open “My Computer”->”Property”



- b) Click “Hardware Selection Card” -> “Driver Signing”



- c) Select “Ignore” and click “OK”.

3.2 Installing on Windows 7 or Vista

3.2.1 Run with administrator’s privilege

Right click the application icon, and then select “Run as Administrator”.

3.2.2. For security alert

[For English and Simple Chinese System, please ignore this explanation.](#)

If windows pops up security alert dialogs, please select “go on to install”.

3.2.3 Automatically Installing hardware

After the driver software is installed, connect and switch on the Hytera USB Device, the system will install the hardware automatically.

3.3 Hardware installation problem

Please refer to Chapter 2, Part 2: [Installing Hardware](#)

3.4 Installing new hardware when keeping other Hytera USB device running.

3.4.1 Kill device_detector.exe process.

Copy “taskkill /IM "device_detector.exe" /F” to “Windows start menu”->”Run” dialog, then press “Enter”

If you don’t need automatic hardware installation later, please delete “Windows start menu”->”All Programs”->”Startup”->”HyteraDeviceDetector”

4 Uninstall of driver installation application.

The install application will be uninstalled, but the drivers will be left.

4.1 Step1:

Select



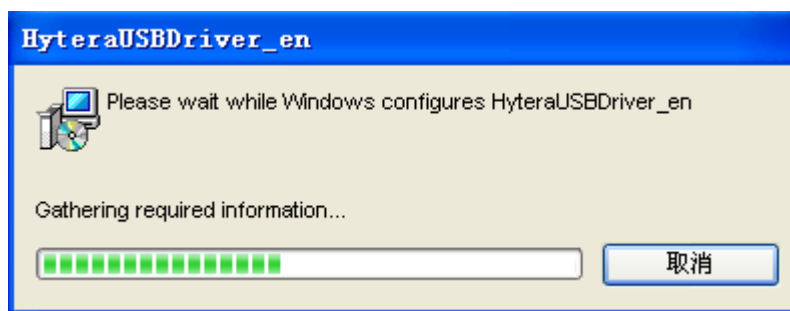
>All->Programs->



4.2 Step 2:

Select “Yes” when the system Confirms whether you uninstall.

4.3 Step 3:



The above dialogs shows and then the uninstallation is finished.