



Maximize the quality and value of your output with IBM printing supplies



Table of Contents

3-5

Workgroup Supplies - Color

Infoprint® Color 8
Infoprint Color 1220
Infoprint Color 1334
Infoprint Color 1357 and 1228
Infoprint Color 1454, 1464, 1354L and 1354

6-10

Workgroup Supplies - Monochrome

Infoprint 1116
Infoprint 1120 and 1125
Infoprint 1130 and 1140
Infoprint 1145
Infoprint 1000 MFP Options
Infoprint 1222
Infoprint 1226
Infoprint 1312
Infoprint 1332, 1352 and 1372
Infoprint 1410 MFP
Infoprint 1412
Infoprint 1422

Infoprint 1145 MFP
Infoprint 12
Infoprint 20
Infoprint 21
Infoprint 32 and 40
Network Printer 12
Network Printer 17
Network Printer 24

11-12

Impact and Non-Impact Industrial Supplies

IBM 4400
IBM 4230 and 4232
IBM 4247
IBM 6400
Infoprint 62

13

Enterprise Color Supplies

Infoprint Hi-Lite Color
Infoprint Color 100, 130 and 130 Plus
IBM 3170, InfoColor 70 and Infoprint Color 100

14-16

Cutsheet and Continuous Form Production Supplies

IBM 3130
IBM 3160 and Infoprint 60
Infoprint 70 and 70 Plus
Infoprint 2000
Infoprint 2060ES and 2075ES
Infoprint 2085 and 2105
Infoprint 2090ES and 2105ES

Infoprint 3000
IBM 3900 and Infoprint 4000
Infoprint 4100

From manufacturing to the customer site, IBM® printing supplies provide exceptional quality and value to our customers.

IBM Printing Supplies

IBM printing supplies have been engineered specifically to complement IBM's line of printers, from up to 3 pages per minute to over 1,000 impressions per minute. Manufactured with stringent quality control standards, IBM printing supplies can help you maximize productivity, minimize maintenance and deliver exceptional print quality. With IBM printing supplies, you can get page after page of clear, sharp print at an affordable price. To optimize the performance of your IBM printer, use only genuine IBM printing supplies.

IBM Brand Paper

To enhance the performance and quality of output on your printers, IBM provides a complete line of IBM brand paper and transparencies. From cut sheet papers and transparencies for copiers, ink jet and laser printers to roll paper for continuous form printers and computer paper for impact printers, IBM brand papers are performance guaranteed.

Manufactured to stringent quality standards, IBM Brand paper is consistently tested for smoothness, brightness, opacity, runability and other features that impact product integrity. For a complete list of IBM papers and where to buy, visit ibm.com/printers/supplies.





Infoprint Color 8 Supplies

Part No.	Description	Yield ¹ (pages)
02N7223	Toner Cartridge, Black (6 pk)	3,000 x 6
02N7220	Toner Cartridge, Cyan (6 pk)	3,000 x 6
02N7222	Toner Cartridge, Magenta (6 pk)	3,000 x 6
02N7221	Toner Cartridge, Yellow (6 pk)	3,000 x 6
02N7227	Image Drum, Black (4 pk)	13,000 x 4
02N7224	Image Drum, Cyan (4 pk)	13,000 x 4
02N7226	Image Drum, Magenta (4 pk)	13,000 x 4
02N7225	Image Drum, Yellow (4 pk)	13,000 x 4
02N7216	Fuser Assembly (LV: 110V)	60,000
02N7217	Fuser Assembly (HV: 220V)	60,000
02N7230	Transfer Belt Assembly	50,000
02N7218	Oil Roller Assembly	10,000
02N7219	Waste Toner Box	25,000

Infoprint 1000 Family

The IBM Infoprint 1000 family of workgroup printers offers a wide variety of print speeds and features to serve everyone from small businesses to workgroups in large companies. From 16 to 45 pages per minute and with monochrome and color offerings, IBM's family of workgroup printers can meet the printing requirements of your business.



Infoprint Color 1220 Supplies

Part No.	Description	Yield ¹ (pages)
53P9356	Toner Cartridge, Black ²	6,000
53P9357	Toner Cartridge, Cyan ²	6,000
53P9358	Toner Cartridge, Magenta ²	6,000
53P9359	Toner Cartridge, Yellow ²	6,000
53P9360	High Yield Toner Cartridge, Black	15,000
53P9361	High Yield Toner Cartridge, Cyan	15,000
53P9362	High Yield Toner Cartridge, Magenta	15,000
53P9363	High Yield Toner Cartridge, Yellow	15,000
53P9364	Return Program Toner Cartridge, Black	6,000
53P9365	Return Program Toner Cartridge, Cyan	6,000
53P9366	Return Program Toner Cartridge, Magenta	6,000
53P9367	Return Program Toner Cartridge, Yellow	6,000
53P9368	Return Program High Yield Toner Cartridge, Black	15,000
53P9369	Return Program High Yield Toner Cartridge, Cyan	15,000
53P9370	Return Program High Yield Toner Cartridge, Magenta	15,000
53P9371	Return Program High Yield Toner Cartridge, Yellow	15,000
53P9372	Toner Waste Container	180,000 b/w 50,000 color
53P9373	Maintenance Kit	105,000
53P9374	Fuser Kit (LV: 115V)	150,000
53P9375	Fuser Kit (HV: 220V)	150,000



Infoprint Color 1334

Part No.	Description	Yield¹ (pages)
75P5474	Low Yield Toner Cartridge, Cyan	3,000
75P5475	Low Yield Toner Cartridge, Magenta	3,000
75P5476	Low Yield Toner Cartridge, Yellow	3,000
75P5477	Low Yield Toner Cartridge, Black	5,000
75P5427	High Yield Toner Cartridge, Cyan	6,600
75P5428	High Yield Toner Cartridge, Magenta	6,600
75P5429	High Yield Toner Cartridge, Yellow	6,600
75P5430	High Yield Toner Cartridge, Black	10,000
75P5438	Photodeveloper Cartridge	40,000 images
75P5431	Toner Waste Bottle	12,000 images
75P5433	Fuser Unit (LV: 120V)	51,000
75P5434	Fuser Unit (HV: 220V)	51,000
75P5435	Fuser Unit (JLV: 100V)	51,000
56P1651	Transfer Unit	120,000
56P1607	Cleaning Roller	120,000
56P1660	Transfer Roller	120,000



Infoprint Color 1357 and 1228 Supplies

Part No.	Description	Yield¹ (pages)
53P9393	Toner Cartridge, Cyan	14,000
53P9394	Toner Cartridge, Magenta	14,000
53P9395	Toner Cartridge, Yellow	14,000
53P9396	Toner Cartridge, Black	14,000
53P9397	Color Photodeveloper Kit	28,000
53P9398	Black Photodeveloper Kit	28,000
53P9399	Oil Coating Roller	14,000
56P9694	Transfer Belt	120,000
56P9751	Fuser Kit (LV: 120V)	105,000
56P9752	Fuser Kit (HV: 220V)	105,000
28P2019	Staple Cartridges w/Staples (3)	3,000 x 3



Infoprint Color 1454,1464, 1354L and 1354 Supplies

Part No.	Description	Yield¹ (pages)
75P4044	Toner Cartridge, Cyan	6,000
75P4045	Toner Cartridge, Magenta	6,000
75P4046	Toner Cartridge, Yellow	6,000
75P4043	Toner Cartridge, Black	6,000
75P4047	High Yield Toner Cartridge, Black	15,000
75P4048	High Yield Toner Cartridge, Cyan	15,000
75P4049	High Yield Toner Cartridge, Magenta	15,000
75P4050	High Yield Toner Cartridge, Yellow	15,000
75P4051	Return Program Toner Cartridge, Black	6,000
75P4052	Return Program Toner Cartridge, Cyan	6,000
75P4053	Return Program Toner Cartridge, Magenta	6,000
75P4054	Return Program Toner Cartridge, Yellow	6,000
75P4055	Return Program High Yield Toner Cartridge, Black	15,000
75P4056	Return Program High Yield Toner Cartridge, Cyan	15,000
75P4057	Return Program High Yield Toner Cartridge, Magenta	15,000
75P4058	Return Program High Yield Toner Cartridge, Yellow	15,000
53P9372	Toner Waste Container	180,000 b/w 50,000 color
56P1544	Infoprint Color 1354L and 1354 Maintenance Kit (Transfer unit)	120,000
56P9374	Infoprint Color 1354L and 1354 Fuser Kit (LV: 120V))	200,000
56P9375	Infoprint Color 1354L and 1354 Fuser Kit (HV: 220V)	200,000
56P2848	Infoprint Color 1454 and 1464 Maintenance Kit (Transfer Unit)	120,000
56P2910	Infoprint Color 1454 and 1464 Fuser Kit (LV:120)	200,000
56P2911	Infoprint Color 1454 and 1464 Fuser Kit: (LV:220)	200,000
56P2912	Infoprint Color 1454 and 1464 Fuser Kit: (JLV:100)	200,000



Infoprint 1116 Supplies

Part No.	Description	Yield ¹ (pages)
28P2406	Toner Cartridge ²	3,000
28P2414	High Yield Toner Cartridge	6,000
28P2412	Return Program Toner Cartridge	3,000
28P2420	Return Program High Yield Toner Cartridge	6,000



Infoprint 1120 and 1125 Supplies

Part No.	Description	Yield ¹ (pages)
28P2491	Toner Cartridge ²	7,500
28P2492	High Yield Toner Cartridge	20,000
28P2493	Return Program Toner Cartridge	7,500
28P2494	Return Program High Yield Toner Cartridge	20,000
56P1036	Usage Kit (LV: 120V) ³	250,000
56P1037	Usage Kit (HV: 220V) ³	250,000



Infoprint 1130 and 1140 Supplies

Part No.	Description	Yield ¹ (pages)
28P2007	Toner Cartridge ²	10,000
28P2008	High Yield Toner Cartridge	30,000
28P2009	Return Program Toner Cartridge	10,000
28P2010	Return Program High Yield Toner Cartridge	30,000
28P2012	Infoprint 1130 Usage Kit (LV: 120V)	300,000
28P2013	Infoprint 1130 Usage Kit (HV: 220V)	300,000
28P2014	Infoprint 1130 Fuser Kit (LV: 120V)	300,000
28P2015	Infoprint 1130 Fuser Kit (HV: 220V)	300,000
28P2625	Infoprint 1140 Usage Kit (LV: 120V)	300,000
28P2626	Infoprint 1140 Usage Kit (HV: 220V)	300,000
28P2627	Infoprint 1140 Fuser Kit (LV: 120V)	300,000
28P2628	Infoprint 1140 Fuser Kit (HV: 220V)	300,000
28P2016	Infoprint 1130 and 1140 Charge Roll Kit	300,000
28P2017	Infoprint 1130 and 1140 Transfer Roll Kit	300,000
28P2019	Staple Cartridges (3)	3,000 x 3

IBM Return Program

The IBM Return Program provides customers with an upfront discounted price on select Infoprint 1000 family toner cartridges. This discount is provided based on a customer's commitment to return empty IBM toner cartridges back to IBM with the postage paid label. It's just another way IBM is committed to protecting the environment while providing customers with outstanding value.



Infoprint 1145 Supplies

Part No.	Description	Yield ¹ (pages)
28P1882	Toner Cartridge	30,000
28P1883	Usage Kit (LV:120V)	300,000
28P1884	Usage Kit (HV:220V)	300,000
28P1885	Staple Refill Sets (3)	5,000 x 3



Infoprint 1000 MFP Options

Part No.	Description	Yield (pages)
53P9685	M20/M22 Pick Pad	20,000
53P0079	M25/M26/M30 Pick Pad	20,000
56P2049	M32 Pick Pad	20,000

Image is everything. . .



Infoprint 1222 Supplies

Part No.	Description	Yield ¹ (pages)
53P7704	Toner Cartridge ²	5,000
53P7706	High Yield Toner Cartridge	10,000
53P7705	Return Program Toner Cartridge	5,000
53P7707	Return Program High Yield Toner Cartridge	10,000



Infoprint 1226 Supplies

Part No.	Description	Yield ¹ (pages)
53P7582	Toner Cartridge	12,000
56P0884	Usage Kit (LV:120V)	100,000
56P0885	Usage Kit (HV:220V)	100,000
56P0968	Usage Kit (JLV:100V)	100,000



Infoprint 1312 Supplies

Part No.	Description	Yield ¹ (pages)
75P4683	Toner Cartridge ²	3,000
75P4685	High Yield Toner Cartridge	6,000
75P4684	Return Program Toner Cartridge	3,000
75P4686	Return Program High Yield Toner Cartridge	6,000



Small Planet—Large Concern®
 IBM Printing Supplies
 Return Program



Infoprint 1332, 1352 and 1372

Part No.	Description	Yield ¹ (pages)
75P4300	Toner Cartridge ²	5,000
75P4301	Return Program Toner Cartridge	5,000
75P4302	High Yield Toner Cartridge	21,000
75P4303	Return Program High Yield Toner Cartridge	21,000
75P4304	Extra High Yield Toner Cartridge (For the 1352 and 1372 only)	32,000
75P4305	Return Program Extra High Yield Toner Cartridge (For the 1352 and 1372 only)	32,000
56P1409	Infoprint 1332 and 1352 Usage Kit (LV: 120V)	300,000
56P1412	Infoprint 1332 and 1352 Usage Kit (HV:220V)	300,000
56P1413	Infoprint 1332 and 1352 Usage Kit (JLV: 100V)	300,000
56P1855	Infoprint 1372 Usage Kit (LV: 120V)	300,000
56P1856	Infoprint 1372 Usage Kit (HV:220V)	300,000
56P1857	Infoprint 1372 Usage Kit (JLV: 100V)	300,000
28P2016	Charge Roll Kit	300,000
56P1357	Transfer Roll Kit	300,000
28P2019	Staple Cartridges w/Staples (3)	3,000 x 3



Infoprint 1410 MFP Supplies

Part No.	Description	Yield ¹ (pages)
75P5519	Toner Cartridge ²	6,000
75P5520	Return Program Toner Cartridge	6,000
75P5521	High Yield Toner Cartridge	12,000
75P5522	Return Program High Yield Toner Cartridge	12,000



Infoprint 1412 Supplies

Part No.	Description	Yield ¹ (pages)
75P5708	Toner Cartridge ²	2,500
75P5709	Return Program Toner Cartridge	2,500
75P5710	High Yield Toner Cartridge	6,000
75P5711	Return Program High Yield Toner Cartridge	6,000
75P5712	Photoconductor Kit	20,000



Infoprint 1422 Supplies

Part No.	Description	Yield ¹ (pages)
75P6049	Toner Cartridge ²	6,000
75P6050	Return Program Toner Cartridge	6,000
75P6051	High Yield Toner Cartridge	12,000
75P6052	Return Program High Yield Toner Cartridge	12,000



Infoprint 1145 MFP Supplies

Part No.	Description	Yield ¹ (pages)
75P6111	Toner Cartridge	30,000
28P1883	Usage Kit (LV:120V)	300,000
28P1884	Usage Kit (HV:220V)	300,000
28P1885	Staple Refill Sets (3)	5,000 x 3



Infoprint 12 Supplies

Part No.	Description	Yield ¹ (pages)
01P6897	Toner Cartridge	6,000



Infoprint 20 Supplies

Part No.	Description	Yield ¹ (pages)
90H0748	Toner Cartridge	14,000
90H0750	Usage Kit (LV:120V)	200,000
90H0751	Usage Kit (HV:220V)	200,000
90H3465	Usage Kit (JLV:100V)	200,000



Infoprint 21 Supplies

Part No.	Description	Yield ¹ (pages)
38L1410	Toner Cartridge	15,000
38L1411	Usage Kit (LV :120V)	200,000
38L1412	Usage Kit (HV:220V)	200,000

Small Planet–Large Concern®

As part of a commitment IBM makes to conserve our planet's resources, we have established the Small Planet Large Concern return program. IBM workgroup printer toner cartridges may be returned free of cost in most areas of the world. Simply adhere the shipping label we provide to the outside of the box and seal the used cartridge inside. Look for further instructions on returning used cartridges inside product packages.

reliable



Infoprint 32 and 40 Supplies

Part No.	Description	Yield ¹ (pages)
90H3566	Toner Cartridge	23,000
90H3567	Usage Kit (LV: 120V)	300,000
90H3568	Usage Kit (HV: 220V)	300,000
90H3569	Usage Kit (JLV: 100V)	300,000
90H3570	Staple Refill Sets (3)	5,000 x 3
90H3571	Staple Cartridges w/Staples (3)	5,000 x 3

Note: These yields are not a guarantee of minimum life and are not covered under warranty, but are provided to assist in supplies planning only. Actual usage should be used to establish the life of the supply product in each end user's specific application.

Many factors, such as print coverage per page, paper type and size, and environmental conditions can affect supply life.

¹These numbers reflect an approximate average yield that has been established for each supply item based on 5% coverage.

²Infoprint 1000 family low yield toner cartridges available for purchase on ibm.com only.

³Usage kits for the Infoprint 1120/1125/1332/1352/1372 and Network Printer 12 must be installed by an IBM Customer Engineer.



Network Printer 12 Supplies

Part No.	Description	Yield ¹ (pages)
63H3005	Toner Cartridge	6,000
63H3110	Usage Kit (LV: 120V) ³	150,000
63H3111	Usage Kit (HV: 220V) ³	150,000
63H3117	Usage Kit (JLV: 100V) ³	150,000

quality



Network Printer 17 Supplies

Part No.	Description	Yield ¹ (pages)
63H2401	Toner Cartridge	10,000
63H2324	Usage Kit (LV: 120V)	200,000
63H2325	Usage Kit (HV: 220V)	200,000



Network Printer 24 Supplies

Part No.	Description	Yield ¹ (pages)
75P5903	Toner Cartridge	15,000
63H5718	Usage Kit (LV: 120V)	350,000
63H5719	Usage Kit (HV: 220V)	350,000
63H5720	Staple Cartridge w/Staples (3)	2,000 x 3

cost-effective

ease of use. . .



IBM 4400 Thermal Transfer Supplies Wide Spectrum Wax Ribbons

IBM 4400 TTW Thermal Transfer Ribbon

This ribbon provides superior print quality on coated and uncoated thermal transfer paper, labels and tags. The IBM 4400 TTW ribbons are an excellent choice for general-purpose applications.

Part No.	Description	Use with model
69G7318	TTW - 2.36 in/60 mm	4 in/6 in/8 in
69G7319	TTW - 3.27 in/83 mm	4 in/6 in/8 in
69G7320	TTW - 4.33 in/110 mm	4 in/6 in/8 in
69G7321	TTW - 5.12 in/130 mm	6 in/8 in
69G7322	TTW - 6.00 in/152 mm	6 in/8 in
69G7323	TTW - 6.73 in/171 mm	6 in/8 in
69G 7324	TTW - 8.66 in/220 mm	8 in only

IBM 4400 TTR Thermal Transfer Ribbons

Specifically designed for use with high-end synthetic labels, the IBM 4400 TTR ribbons provide high heat, chemical and abrasion resistance. These ribbons are the right choice where toughness and label durability are essential.

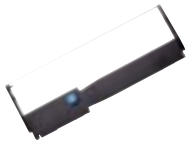
IBM 4400 Thermal Transfer Supplies Harsh Environment Resin Ribbons

Part No.	Description	Use with model
69G7332	TTR - 2.36 in/60 mm	4 in/6 in/8 in
69G7333	TTR - 3.27 in/83 mm	4 in/6 in/8 in
69G7334	TTR - 4.33 in/110 mm	4 in/6 in/8 in
69G7335	TTR - 5.12 in/130 mm	6 in/8 in
69G7336	TTR - 6.00 in/152 mm	6 in/8 in
69G7337	TTR - 6.73 in/171 mm	6 in/8 in
69G7338	TTR - 8.66 in/220 mm	8 in only

IBM 4400 Thermal Transfer Supplies Thermal Print Heads and Cleaner Pens

Part No.	Description	Use with model
69G7339 / 57P2165	8 in. Printhead / 8 in Enhanced Printhead — 203 dpi	8 in only
69G7340 / 57P2166	8 in. Printhead / 8 in Enhanced Printhead — 300 dpi	8 in only
69G7341 / 57P2167	6 in. Printhead / 6 in Enhanced Printhead — 203 dpi	6 in only
69G7342 / 57P2168	6 in. Printhead / 6 in Enhanced Printhead — 300 dpi	6 in only
69G7343 / 57P2169	4 in. Printhead / 4 in Enhanced Printhead — 203 dpi	4 in only
69G7344 / 57P2170	4 in. Printhead / 4 in Enhanced Printhead — 300 dpi	4 in only
69G7345	Cleaner Pens	All models

Note: IBM thermal ribbons are 2,051 feet / 625 meters long with an estimated average annual usage of 6 to 10 boxes per printer. Thermal print heads have an estimated average life of about 2 years with a usage of 4 ribbons per month. The print head should be cleaned every time the ribbon or media is changed with the cleaner pens. Cleaner pens are good for up to 8 cleanings.



IBM 4230 and 4232 Serial Matrix Printer Supplies

Part No.	Description	Yield ¹ (characters)
1040580	Auto-inking Ribbon	15,000,000
1040440	High Yield Ribbon	6,000,000

IBM impact and non-impact industrial printing supplies are as durable and dependable as our printers. With IBM printing supplies, you get page after page of clear, sharp print at an affordable price.

Print Heads and Bands

IBM print heads and bands are also available for select IBM impact printers. For a list of the complete line of IBM heads and bands, contact an IBM supplies dealer in your area or call 1-888-IBM-PRINT



IBM 4247 Multi-Form Printer Supplies

Part No.	Description	Yield ¹ (characters)
1053685	Printer Ribbon, Black	15,000,000
57P1743	V Series Printer Ribbon, Black	20,000,000



IBM 6400 i Series Model Supplies

Part No.	Description	Yield ¹ (characters)
54P1095	Premium 2000 Ribbon	60,000,000 x 12
57P2308	Premium 30 Ribbon	30,000,000 x 6
57P2309	Premium 20 Ribbon	20,000,000 x 6

For reliable, consistent performance of your IBM impact and non-impact industrial printers, use only genuine IBM brand ribbons, printbands and print heads.

Note: These yields are not a guarantee of minimum life and are not covered under warranty, but are provided to assist in supplies planning only. Actual usage should be used to establish the life of the supply product in each end user's specific application. Many factors, such as print coverage per page, paper type and size and environmental conditions can affect supply life.

¹Ribbon life experienced by individual users may vary significantly, depending on the user criteria and factors such as printer condition, machine settings, paper quality and bar code requirements.

²These numbers reflect an approximate average yield that has been established for each supply item indicated based on 4% coverage.



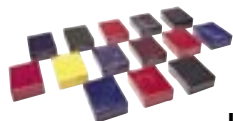
IBM 6400 Line Matrix Printer Supplies

Part No.	Description	Yield ¹ (characters)
1040990	6400/6408 General Purpose Ribbon	20,000,000
1040993	6400/6408 High Contrast Ribbon	20,000,000
1040995	6400/6412 General Purpose Ribbon	30,000,000
1040998	6400/6412 High Contrast Ribbon	30,000,000



Infoprint 62 Supplies

Part No.	Description	Yield ² (imp)
69G7306	Toner Cartridge	28,000 x 6
1402818	Waste Toner Bottle	150,000 x 8



Infoprint Hi-Lite Color Enhanced Supplies

Part No.	Description	Yield ¹ (imp)
1402847	Yellow Ink	2,340,000 x 60
1402850	Dark Green Ink	2,340,000 x 60
1402851	Magenta Ink	2,340,000 x 60
1402853	Light Green Ink	2,340,000 x 60
1402854	Warm Red Ink	2,340,000 x 60
1402855	Violet Ink	2,340,000 x 60
1402856	Black Ink	2,340,000 x 60
1402857	Cyan Ink	2,340,000 x 60
1402858	Orange Ink	2,340,000 x 60
1402860	Maroon Ink	2,340,000 x 60
1402862	Bright Red Ink	2,340,000 x 60
1402863	Deep Blue Ink	2,340,000 x 60

Enterprise Color Supplies

Whether you're printing hi-lite color or full color, IBM supplies provide vivid, high quality color. Recently, IBM introduced the next generation of supplies for the Infoprint Color 100, 130 and 130 Plus. IBM Version 3 toner and developer mix enable users to benefit from improved print quality and enhanced process stability. Image is everything...*insist on genuine IBM supplies.*



Infoprint Color 100, Infoprint Color 130, and Infoprint Color 130 Plus Supplies

Part No.	Description	Yield ² (imp)
69G7300	Version 3 Toner, Black	13,700 to 15,000 x 6
69G7301	Version 3 Toner, Cyan	13,700 to 15,000 x 6
69G7302	Version 3 Toner, Magenta	13,700 to 15,000 x 6
69G7303	Version 3 Toner, Yellow	13,700 to 15,000 x 6
75P8191	Version 3 Developer Mix, Cyan	50,000 x 6
75P8194	Version 3 Developer Mix, Magenta	50,000 x 6
75P8197	Version 3 Developer Mix, Yellow	50,000 x 6
75P8200	Version 3 Developer Mix, Black	50,000 x 6
11L5804	Standard Wide Drum	140,000 to 210,000
11L5805	Encoded Wide Drum	140,000 to 210,000



IBM 3170, InfoColor 70 and Infoprint Color 100 Supplies

Part No.	Description	Yield ² (imp)
1402813	Version 2 Toner, Black	13,700 x 6
1402814	Version 2 Toner, Cyan	13,700 x 6
1402815	Version 2 Toner, Magenta	13,700 x 6
1402816	Version 2 Toner, Yellow	13,700 x 6
1402721	Splicing Tape	N/A
1402761	Toner Waste Bottle	N/A



IBM 3130 Supplies

Part No.	Description	Yield ³ (pages)
1402690	Toner	35,000 x 6
1402691	Developer	600,000
1372472	Photoconductor	50,000
1372475	Fuser Unit	600,000
1372476	Cleaning Unit	300,000 to 500,000
1372477	Transfer Unit	600,000



IBM 3160 and Infoprint 60 Supplies

Part No.	Description	Yield ³ (pages)
1402680	Toner	50,000 x 6
1402681	Developer	1,000,000
1402821	Fuser Unit	1,000,000
1402683	Cleaning Unit	300,000 to 500,000
1402684	Transfer Unit	1,000,000
1402820	Finisher Staple Unit	5,000 x 4
1402727	Finisher Cartridge Unit Saddle	5,000
1402728	Cartridge Unit Corner	10,000 x 2

Businesses worldwide are facing even greater challenges for printing high-quality, graphics-rich documents with ever decreasing production time. To meet the rigorous demands of higher speeds and quality, IBM continues to raise the bar for printing supplies.



Infoprint 70 and 70 Plus Supplies

Part No.	Description	Yield ⁴ (pages)
69G7372	Toner	30,000 x 6
69G7373	Drum Unit	400,000
69G7374	Fuser Cleaning Unit	320,000
57P2287	70 Plus Toner	30,000 x 6
57P2288	70 Plus Drum Unit	400,000
57P2289	70 Plus Fuser Cleaning Unit	320,000
90H3570	Staple Refills (3)	5,000 x 3

Customers have more supplies options such as MICR and polyester based supplies, that contain significant improvements to optimize the quality of printed output and the productivity of the print shop.



Infoprint 2000 Supplies

Part No.	Description	Yield ⁴ (pages)
69G7382	Toner, Version 2	79,300 x 2
57P2171	MICR Toner	80,000 x 2
69G7316	Staple Wire Spool	40,000
69G7317	Stitch Wire Cassette (required for optional booklet maker use)	45,000 x 2



Infoprint 2060ES and 2075ES Supplies

Part No.	Description	Yield ⁴ (pages)
10R2774	Toner	43,000 x 4
53P6725	Staple Refill Sets	5,000 x 5
53P6744	Staple Cartridge w/Staples	5,000
10R2507	Staple Refill Sets for Booklet Finisher	5,000 x 3
10R2508	Staple Cartridge w/Staples for Booklet Finisher	5000
10R2509	Staple Refill Sets for Booklet Finisher	2000 x 4
10R2510	Staple Cartridge w/Staples for Booklet Finisher	2,000



Infoprint 2085 and 2105 Supplies

Part No.	Description	Yield ⁴ (pages)
57P1416	Toner	55,000 x 4
53P6725	Staple Refill Sets	5,000 x 5
53P6744	Staple Cartridge w/Staples	5,000



Infoprint 2090ES and 2105ES Supplies

Part No.	Description	Yield ⁴ (pages)
57P1416	Toner	55,000 x 4
53P6725	Staple Refill Sets	5,000 x 5
53P6744	Staple Cartridge w/Staples	5,000
10R2507	Staple Refill Sets for Booklet Finisher	5,000 x 3
10R2508	Staple Cartridge w/Staples for Booklet Finisher	5000
10R2509	Staple Refill Sets for Booklet Finisher	2000 x 4
10R2510	Staple Cartridge w/Staples for Booklet Finisher	2,000



Infoprint 3000 Supplies

Part No.	Description	Yield ⁵ (feet)
1402717	Toner, Version 2	45,000 x 6
1402718	Developer, Version 2	1,000,000 x 2
1402826	Fines Filter	1,200,000
69G7313	Teflon Oiler Belt	1,200,000



IBM 3900 and Infoprint 4000 Supplies

Part No.	Description	Yield ⁵ (feet)
1402822	Toner	42,000 x 8
1402823	Developer	1,400,000 x 2
1402824	MICR Toner	44,000 x 8
1402825	MICR Developer	800,000 x 2
1402833	Enhanced Printing Toner	50,000 x 8
69G7379	Enhanced Printing Developer, Version 2	2,000,000 x 2
57P1888	Enhanced Printing Toner, Version III	55,000 x 8
57P1892	Enhanced Printing Developer, Version III	1,600,000 x 2
57P1881	Blue Toner	50,000 x 8
57P1889	Blue Developer for the Infoprint 4000/4100	1,000,000 x 2
57P1883	Green Toner	50,000 x 8
57P1890	Green Developer for the Infoprint 4000/4100	1,000,000 x 2
57P1885	Red Toner	50,000 x 8
57P1892	Red Developer for the Infoprint 4000/4100	700,000 x 2

Note: These yields are not a guarantee of minimum life and are not covered under warranty, but are provided to assist in supplies planning. Actual usage should be used to establish the life of the supply product in each end user's specific application. Many factors, such as print coverage per page, paper type and size, and environmental conditions can affect supply life. To view additional supply yields for the IBM 3900 and Infoprint 4000 printers, visit our web site at ibm.com/printers.

¹ These numbers reflect an approximate average yield that has been established for each supply item indicated based on .5% coverage.

² These numbers reflect an approximate average yield that has been established for each supply item indicated based on 17% coverage - A4.

³ These numbers reflect an approximate average yield that has been established for each supply item indicated based on 4% coverage.

⁴ These numbers reflect an approximate average yield that has been established for each supply item indicated based on 6% coverage.

⁵ These numbers reflect an approximate average yield that has been established for each supply item indicated based on 4% coverage given a 100 square inch document with a forms length of 1 foot at contrast setting C4.



Infoprint 4100 Supplies

Part No.	Description	Yield ⁵ (feet)
69G7377	Enhanced Printing Toner	85,500 x 4
69G7370	Enhanced Printing Developer	1,600,000 x 2
57P1887	Enhanced Printing Toner, Version III	100,000 x 4
57P1892	Enhanced Printing Developer, Version III	1,600,000 x 2
57P2074	MICR Toner	101,000 x 4
57P2100	MICR Developer	1,200,000 x 2
17R7725	Enhanced Printing Toner Version V	100,000 x 4
17R7726	Enhanced Printing Developer Version V	2,000,000 x 2
57P1882	Blue Toner	100,000 x 4
57P1889	Blue Developer for the Infoprint 4000/4100	1,000,000 x 2
57P1884	Green Toner	100,000 x 4
57P1890	Green Developer for the Infoprint 4000/4100	1,000,000 x 2
57P1886	Red Toner	100,000 x 2
57P1891	Red Developer for the Infoprint 4000/4100	700,000 x 2



IBM 3900 and Infoprint 4000/4100 Maintenance Supplies

Part No.	Description	Yield ⁵
1372463	IBM 3900 and Infoprint 4000/4100 Fuser Belt Oil	700,000
1402819	IBM 3900 and Infoprint 4000/4100 Wick Roll Oil	450,000
69G7314	Infoprint 4000 Oiler Belt (Teflon)	1,200,000
1372459	IBM 3900 Oiler Belt	1,700,000
1372464	IBM 3900 and Infoprint 4000/4100 Fine Filter	3,500,000
57P2249	Infoprint 4100 Oiler Belt	1,500,000





© International Business Machines Corporation 2005

IBM Printing Systems
6300 Diagonal Highway
Boulder, Colorado 80301

Printed in North America
01-05
All Rights Reserved

The following are trademarks or registered trademarks of IBM Corporation in the United States and/or other countries: IBM, Infoprint, Small Planet Large Concern.

Other company, product and service names may be trademarks or service marks of others.

References in this publication to IBM products or services do not imply that IBM intends to make them available in all countries in which IBM operates.

IBM hardware products are manufactured from new parts, or new and used parts. Regardless, IBM warranty terms apply.

This publication is for general guidance only. Product configurations in photographs may contain separately priced options.

Fulfillment and Logistics provided by



Sales and Support provided by



800-646-8028

Where to Buy

To order IBM printing supplies, please contact one of the following numbers to locate an IBM printing supplies dealer in your area.

U.S. and Canada
1-888-IBM-PRINT (888-426-7746)

EMEA

Belgium — 0800 71950

Denmark — 800 15534

Finland — 08001 13110

France — 0800 905 5871

Germany — 0800 18 18 005

Italy — 800 820094

Norway — 800 11389

Spain — 900 983131

Sweden — 0207 94270

UK — 0800 968679

A.P. and L.A.

1-972-881-0733 ext. 3234

G563-0132-06