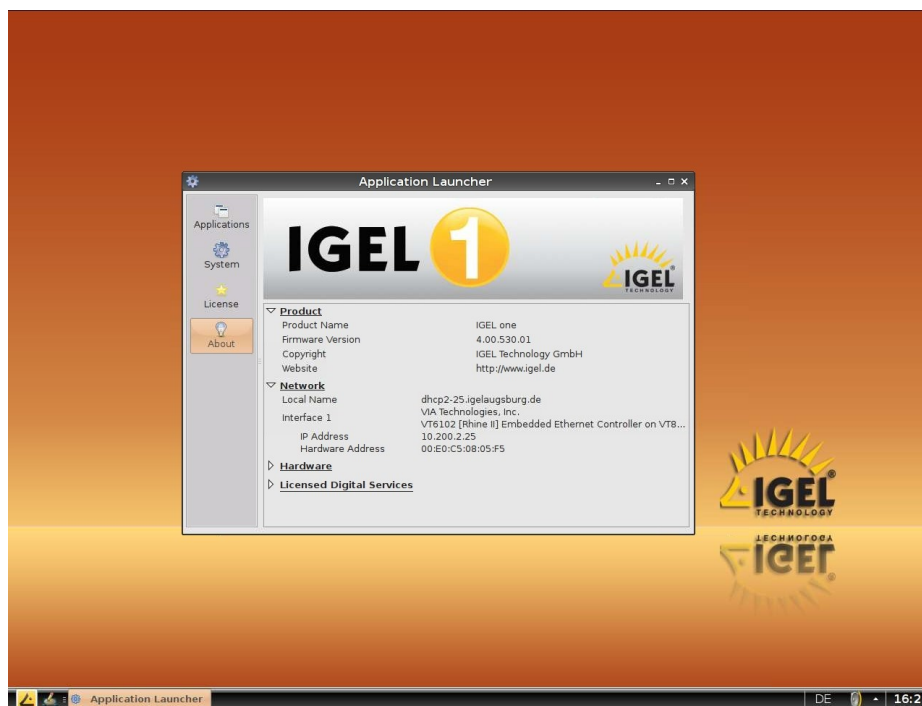




IGEL Thin Clients

IGEL *one*

Initial Setup of the Thin Client



1 General Information

IGEL *one* is the entry device of the IGEL thin client family, designed for SMB and Soho environments without the need for central management. The IGEL *one* offers support for one single protocol, which is chosen during the initial boot. Thus makes the IGEL *one* the perfect end device for server-based computing in small homogeneous environments.

These brief setup instructions will introduce you to the feature set of IGEL *one* and help you with the quick set up of your clients. You will find more detailed information on the systems' configuration in the IGEL user instructions for linux thin clients.

2 Before you begin

Before connecting your IGEL *one* terminal, please check whether the following peripheral devices and services are available:

- 1x VGA monitor
- 1x Keyboard PS/2 or USB
- 1x Mouse USB
- 1x 10/100 UTP network connection

You can connect any VGA monitor to your IGEL terminal. The device can be connected to a PS/2 or USB keyboard and a USB mouse.

IGEL *one* can be operated on all power networks with voltages of 100V to 250V (50Hz-60Hz). The connection to a socket with overload protection is recommended.

Your IGEL terminal is equipped with a 10/100 UTP auto sensing port for ethernet network connections. If needed, you can set the transfer rate in the network setup of your IGEL terminal to 10Mb/s or 100Mb/s (Setup → Network → Advanced).

The device is pre-configured for using DHCP, so if a DHCP server is available in your network no changes on the network configuration of the client are necessary.

3 Unpack the terminal and set up the hardware

Your terminal comes in reusable packaging. We recommend to retain the packaging for any possible returns to your supplier or for an exchange under warranty.

Please bolt together the terminal and its base for upright operation and take care of adequate ventilation of the device. An optional VESA mount (wall/monitor mount) is available for IGEL *one*.

Connect the UTP ethernet network cable to the ethernet jack of your terminal. Do not connect any other type of cable (such as a telephone cable) to this jack, as this could cause serious damage. Carefully connect the monitor cable to the video output jack to avoid bending contact pins. The use of screws to secure the video plug to the terminal is recommended.

Note: Connection cables of computer components and peripheral units equipped with a USB interface must not be connected while the units are under power. Hot plugging of non-USB units can lead to serious damage.

4 Boot IGEL *one*

The boot procedure will last for only a few seconds and during this time the IGEL startup image is displayed along with a progress bar. While booting, a series of services and settings is initiated, including the network configuration. If your network is configured for the use of DHCP, no changes are required

5 Choose a digital service

IGEL *one* is a 'single service device' - only one of the digital services can be configured and used on the client. A list of services available on IGEL *one* is displayed during the initial boot of the client (see picture).

Select one of the services and confirm your choice by clicking on button **OK**. The device will finish the boot procedure and IGEL *one* is ready to use.

A change of the service available with IGEL *one* requires a total reset to factory defaults.



6 The IGEL Linux desktop

The IGEL linux desktop will be displayed with a task bar at its bottom and showing the Application Launcher program to start your application (session). Application Launcher also gives information on your IGEL product such as hardware and firmware information and allows to update, shutdown or restart the device.

IGEL Setup program can be started from the Application Launcher to configure the terminal's basic settings (display, keyboard etc.) and define user sessions (depending on the digital service chosen before). Basic system settings in the setup are described in the following.

7 GUI-Language (User Interface → Language)

Choose your language and configure 'Tool Tips' (useful windows with help information on setup parameters showing up when mouse cursor is pointing at a parameter).

8 Keyboard and mouse (User Interface → Input)

Set a keyboard layout and configure some parameters such as character repeat rate and numlock behavior. You can set additional keyboard layouts and switch between layouts using hotkeys. Configure your mouse for left hand mode and set the mouse speed.

9 Display parameters (User Interface → Display)

Set screen resolution and frequency (default is 800x600 at 60Hz), configure screen saver and power management (DPMS). Before selecting a higher resolution or refresh rate, make sure this mode is supported by your monitor.

10 Network parameters (Network)

When using DHCP, your network settings have been configured automatically during the system boot. You can change network parameters manually on this setup page.

11 Save changes

Clicking *Save* in the setup application will save changes made before to the IGEL *one* configuration file. Clicking *OK* will not only save your settings but also terminate the setup program and let the new settings become active.

12 Initiate a session (Sessions)

Depending on the digital service available on your device, you can define sessions within the setup application (e.g. using ICA or RDP).

Note: The term, 'session' is used in a general sense to designate server connections and applications running locally on your thin client. In principle, every application started on your device is called 'session' - e.g. a local linux shell or Firefox browser.

Once you have initiated a session, you can start it with IGEL Application Launcher, clicking the corresponding desktop icon, choosing session from start menu or drop down menu. A session can be configured to run automatically after system start as well.

13 Reset to factory defaults

Restart the terminal and press ESC key as soon as the note 'booting, please wait...' is displayed. This will present a menu providing 5 options to control the boot process:

- Quiet Boot – Normal boot sequence
- Verbose Boot – Displays each step of the startup sequence
- Emergency Boot – Only IGEL Setup program is available
- Reset to Factory Defaults – Restoration of the original status
- Failsafe with CRC check – Booting to linux system after file system check

In case an administrator password for the terminal setup has been set, you will be prompted to logon before you are allowed to reset the terminal.

Note: Reset to Factory Defaults will set all parameters to their default values, all settings and sessions made before will be lost after the reset and the initial setup procedure has to be repeated.

Please contact our support department with any questions.

Evaluation Support Hotline

EMEA: +49 (0) 421 52094 2222
UK: +44 (0) 118 340 3400
E-Mail: support@igel.com