



These robust IP rated standalone keypads are designed to operate in both internal and external environments.

INOX99 Keypads are ideal for door frame mounting and include backlit metallic keys.

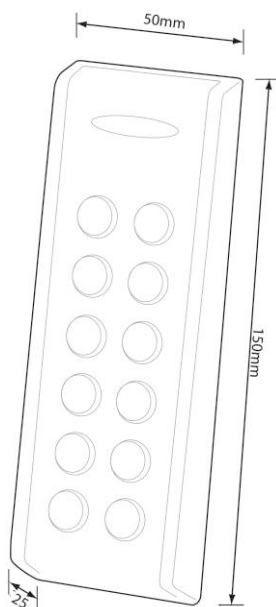
They incorporate an easy to follow programming menu allowing up to 99 unique codes and the setting of the relay output time. The unit also includes an input to trigger the relay from a push to exit button.

Both audible and visual indication is standard indicating that a code is correct or incorrect while also helping to navigate through the programming menu.

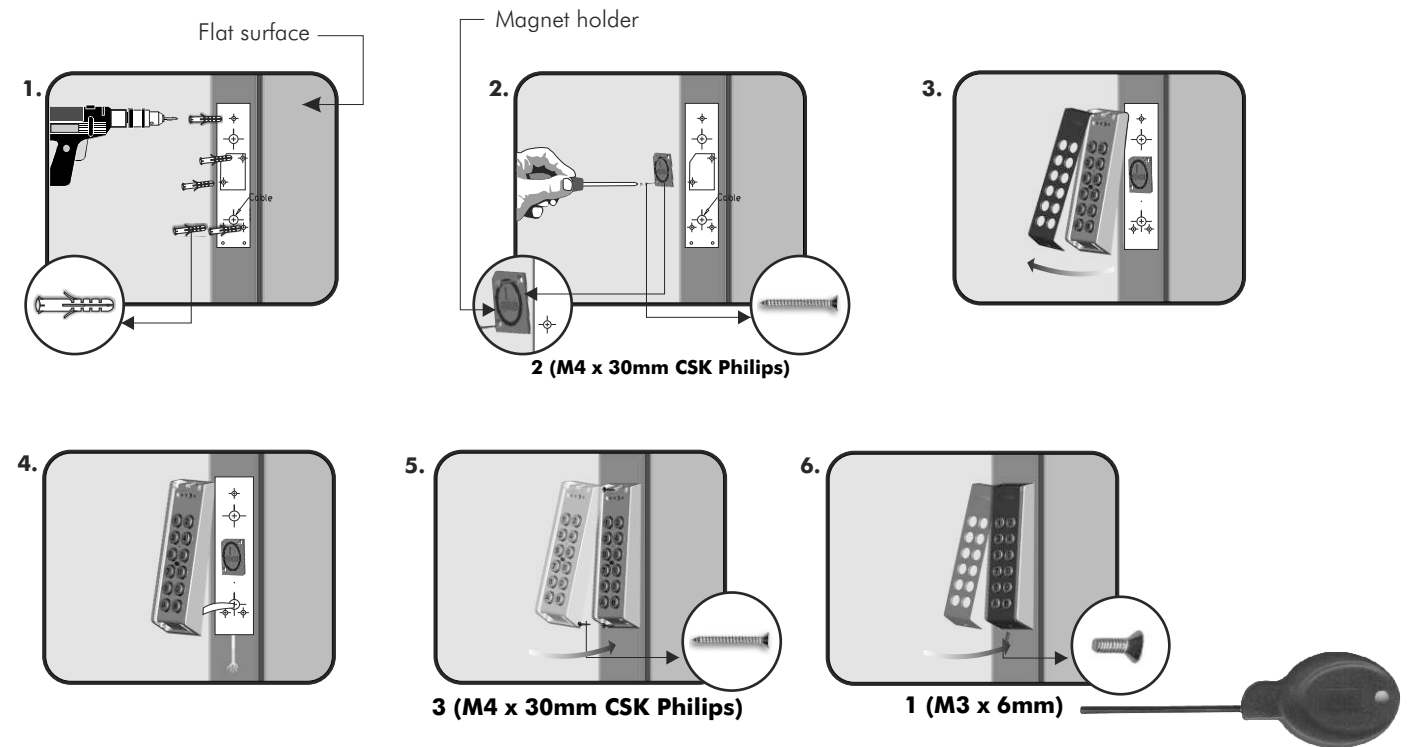
Technical Characteristics

Codes:	99 User Codes (1 - 8 digits)
Relays / Outputs:	1 Relay - R1: (2A @ 24v AC/DC) 1 Transistor Output - T1: (Ic max = 800mA, Vceo max = 30v)
Relay / Output Time:	1 - 99 Seconds or latching (00)
IP Rating	IP67
Power:	12/24v AC/DC
Current:	Standby 20mA / Maximum 70mA

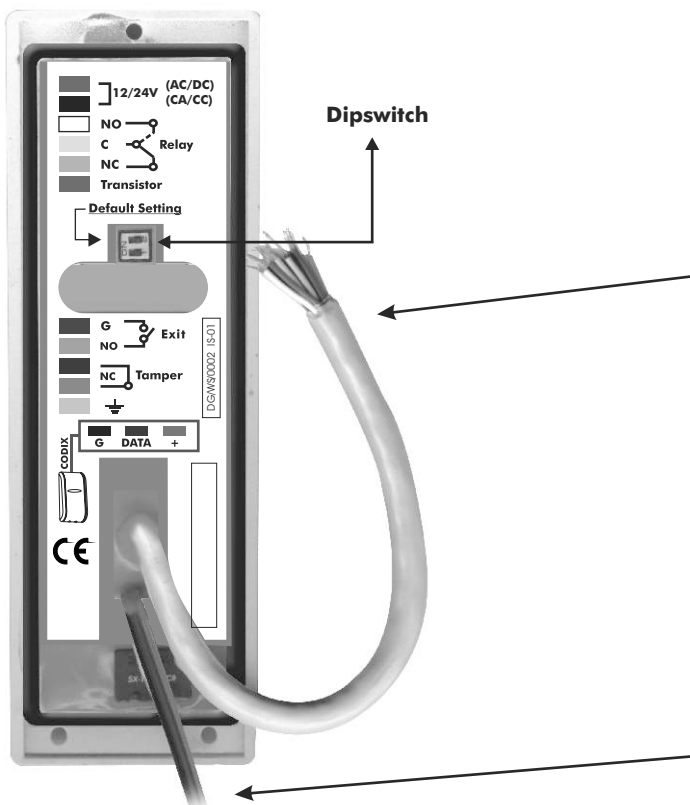
Dimensions



Installation Instructions



Terminal Connections

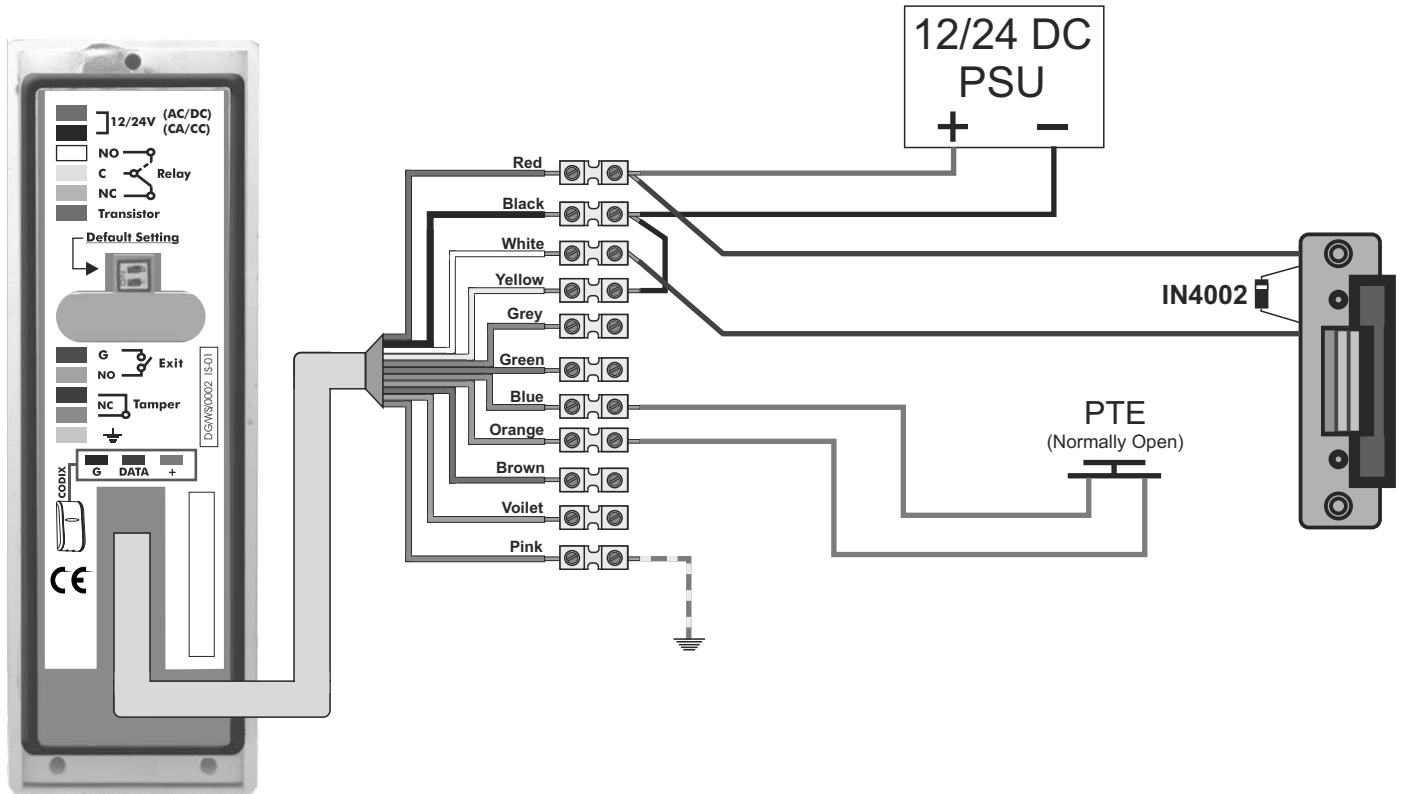


Colour	Connections
Red	12/24V AC/DC
Black	
White	NO
Yellow	C
Grey	NC
Green	Transistor
Blue	G
Orange	NO
Brown	NC
Violet	Tamper
Pink	Mandatory

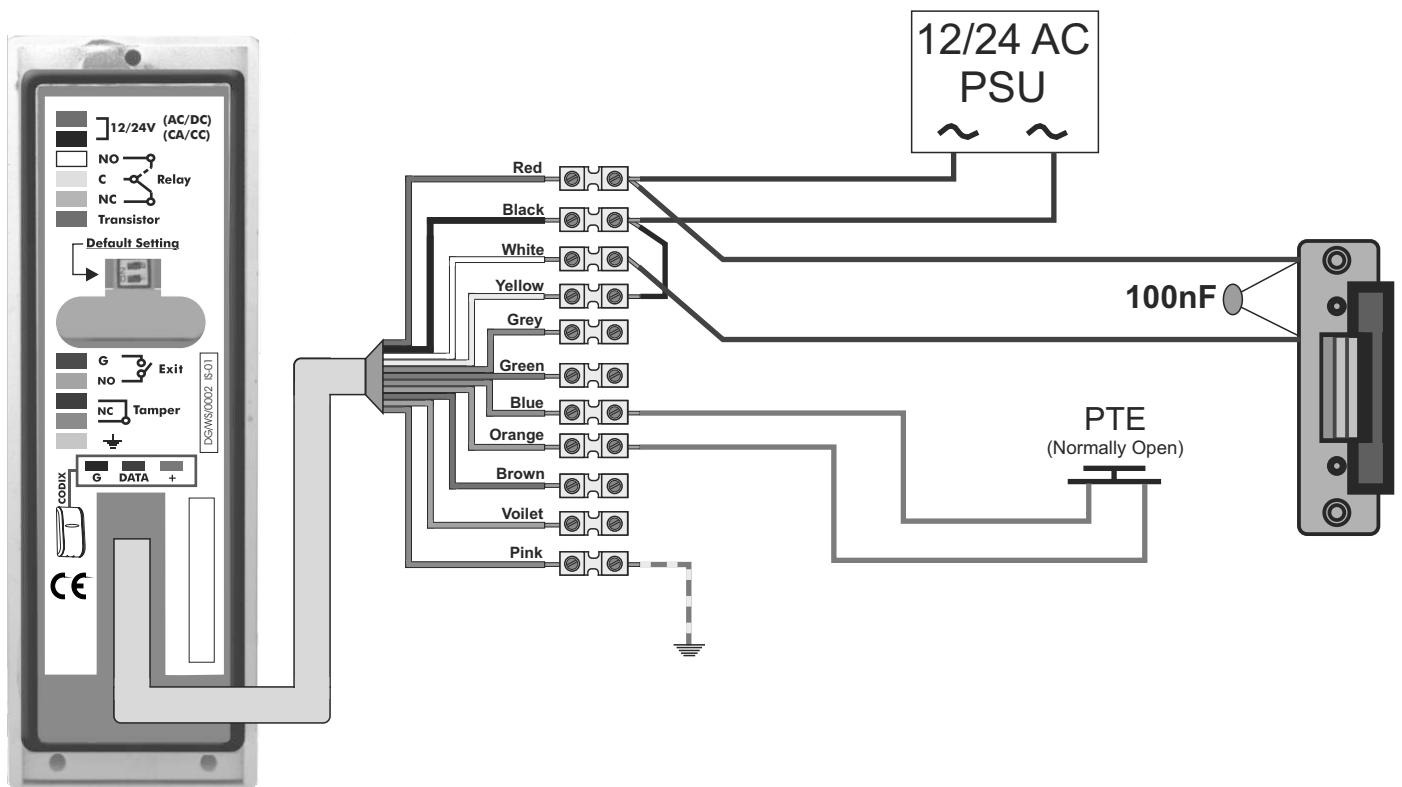
Colour	Connections
Black	GND
Violet	DATA
Grey	+9V

Do not apply any voltage to the CODIX BUS.

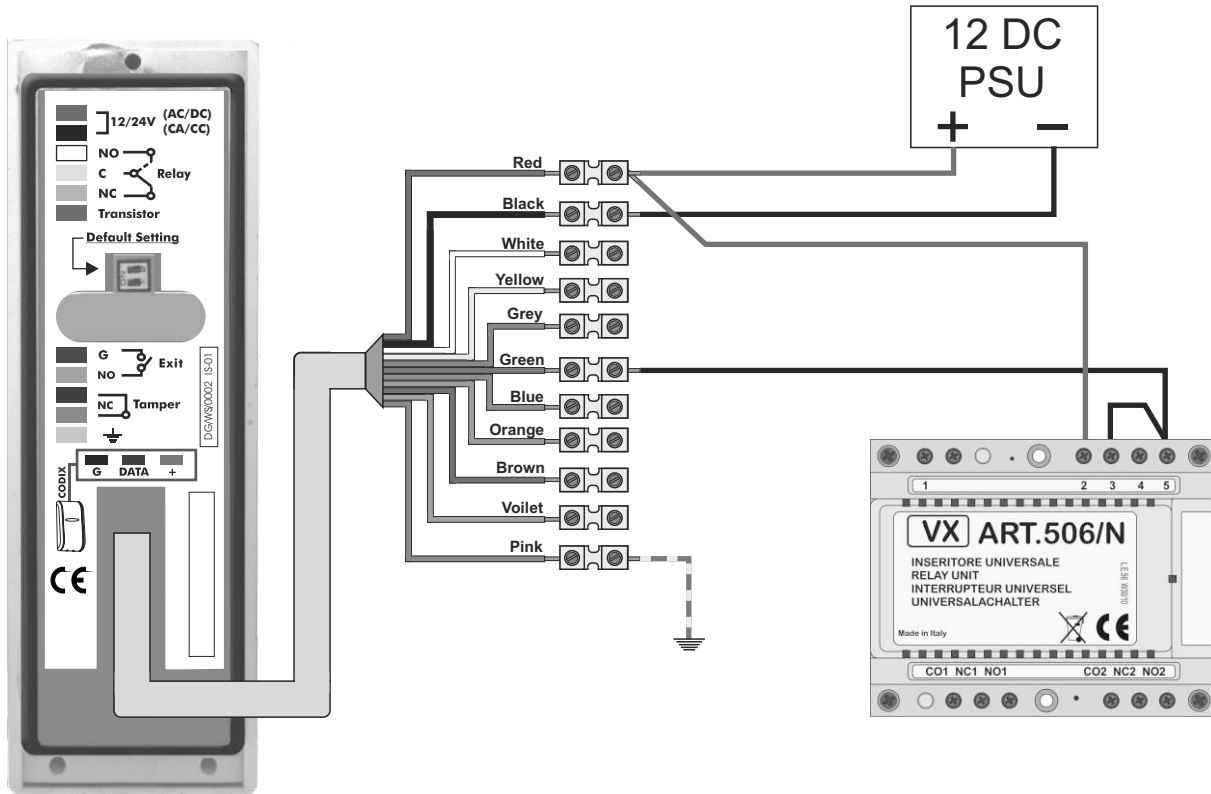
12v / 24v DC Wiring Diagram



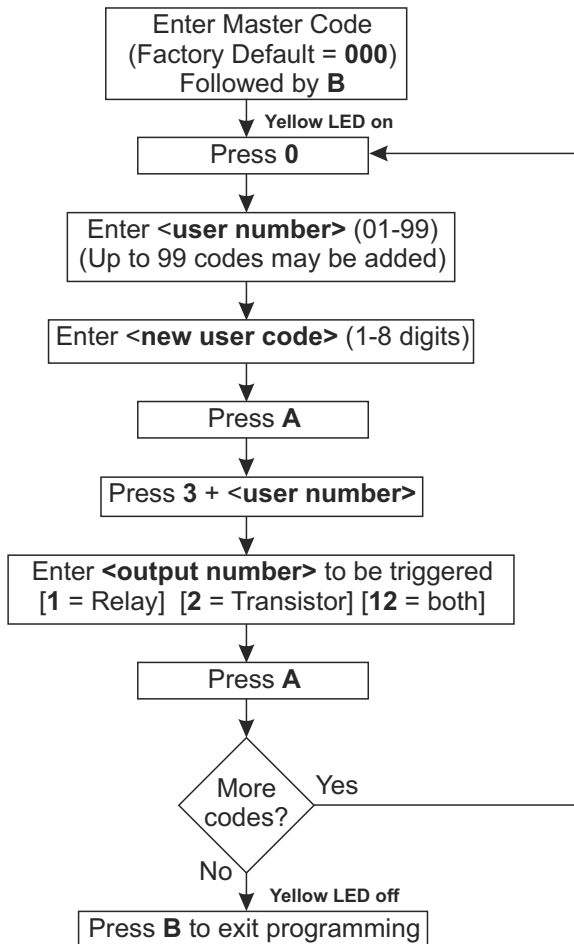
12v / 24v AC Wiring Diagram



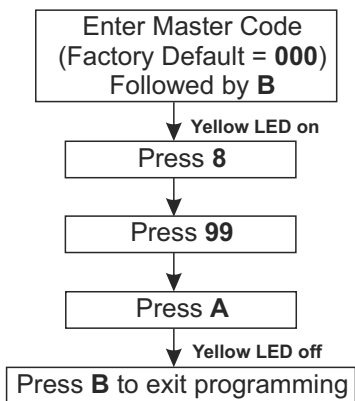
Using Transistor Output With a Art.506 Relay (12v dc)



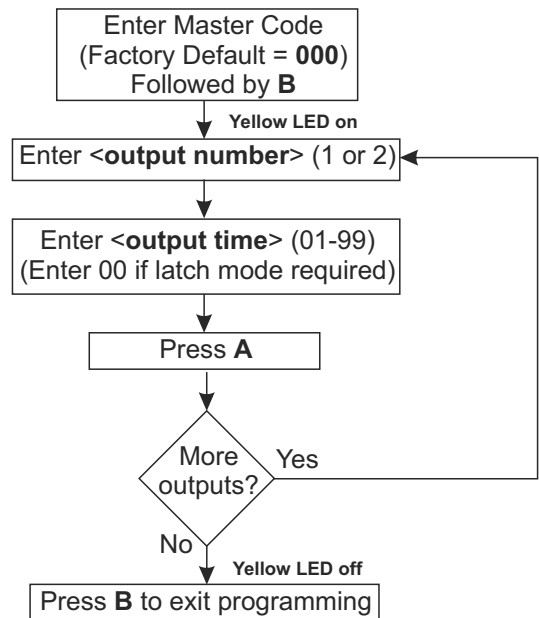
Adding a User Code



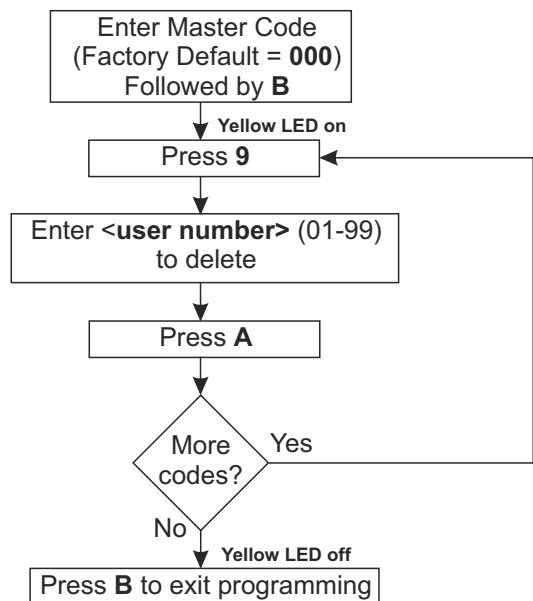
Delete All Codes



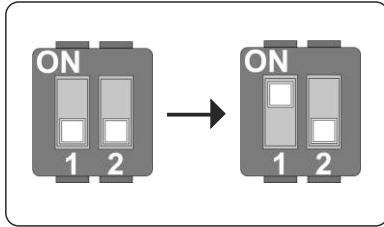
Relay/Output Time



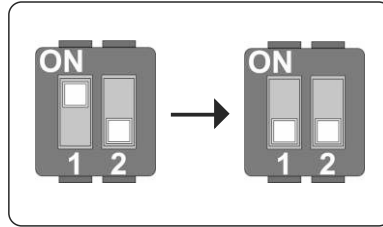
Delete a User Code



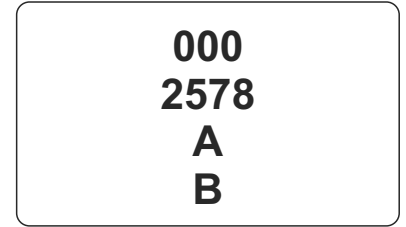
Resetting the Master Code



Disconnect power.
Switch on dip switch 1.
Reconnect power.
Beep Beep + Yellow LED blinks



Switch off dip switch 1
Yellow LED switches on + Long beep



Enter the default master code 000
Enter the new master code e.g 2578
Press A followed by Beep Beep
Press B and the yellow LED switches off

Troubleshooting

Keypad does not respond to key presses

1. Check the correct voltage is present on the input terminals (12/24v ac/dc).

Keypad is not accepting default master code 000

1. Perform master code reset.

Keypad no longer accepts user code

1. Check master code has been changed from the default.
2. Check back EMF protection across lock release.

Keypad accepts user code but no longer releases lock

1. Check the correct relay output is assigned to user code.
2. Check all push to exit buttons are normally open.
3. Check for continuity across relay contacts when user code is entered.
4. Check lock wiring for continuity.
5. Check the correct voltage is present on the input terminals (12/24v ac/dc).

Relay triggers and does not return back to its previous state

1. Check relay is not set up to latch

Northern Office

Videx Security Ltd
Unit 4-7 Chillingham ind Est
Newcastle Upon Tyne
NE6 2XX
Tel: 0870 300 1240
Fax: 0191 224 5678

Southern Office

1 Osprey
Trinity Park
Trinity Way
London
E4 8TD
Fax: 0208 523 5825

Technical Support

tech@videx-security.com
Tel: 0191 224 3174
Fax: 0191 224 4938
<http://www.videx-security.com>