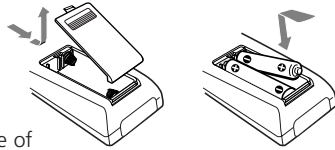


IR 401 Remote Control Instruction Guide

Install two AAA batteries as shown at right.



Operation

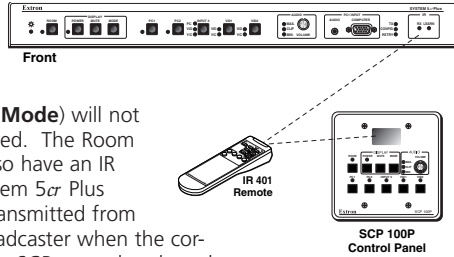
The buttons on the IR 401 duplicate the System 5 α Plus's front panel controls for normal operation. See the other side of this card for details. The switcher responds to commands from the IR 401 as if that button were pressed on the switcher. From a distance of no more than 50 feet, the IR 401 sends infrared (IR) signals to the System 5 α Plus via the switcher's front panel IR port or the IR port of an optional SCP 100P control pad. The carrier frequency is 38 kHz.

NOTE Learning and other setup operations cannot be done from the IR 401.

Learned IR Commands

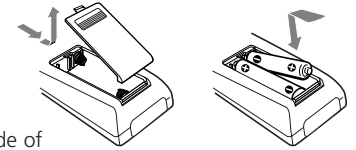
IR commands for controlling the projector must either be "learned" through the front panel, or downloaded from Extron's IR library and stored in the switcher's memory.

The three Display buttons (**Power**, **Mute**, and **Mode**) will not function until those commands have been stored. The Room button and each input selection button can also have an IR command associated with it. Refer to the System 5 α Plus User's Manual for details. IR commands are transmitted from the switcher's IR emitter or the optional IR Broadcaster when the corresponding button is pressed on the IR 401, the SCP control pad, or the switcher's front panel.



IR 401 Remote Control Instruction Guide

Install two AAA batteries as shown at right.



Operation

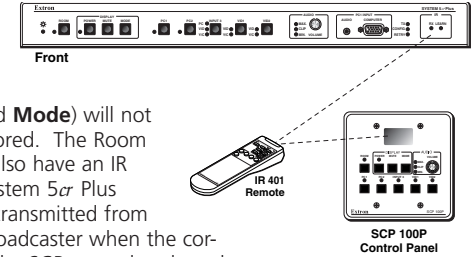
The buttons on the IR 401 duplicate the System 5 α Plus's front panel controls for normal operation. See the other side of this card for details. The switcher responds to commands from the IR 401 as if that button were pressed on the switcher. From a distance of no more than 50 feet, the IR 401 sends infrared (IR) signals to the System 5 α Plus via the switcher's front panel IR port or the IR port of an optional SCP 100P control pad. The carrier frequency is 38 kHz.

NOTE Learning and other setup operations cannot be done from the IR 401.

Learned IR Commands

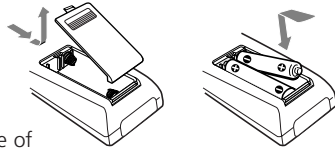
IR commands for controlling the projector must either be "learned" through the front panel, or downloaded from Extron's IR library and stored in the switcher's memory.

The three Display buttons (**Power**, **Mute**, and **Mode**) will not function until those commands have been stored. The Room button and each input selection button can also have an IR command associated with it. Refer to the System 5 α Plus User's Manual for details. IR commands are transmitted from the switcher's IR emitter or the optional IR Broadcaster when the corresponding button is pressed on the IR 401, the SCP control pad, or the switcher's front panel.



IR 401 Remote Control Instruction Guide

Install two AAA batteries as shown at right.



Operation

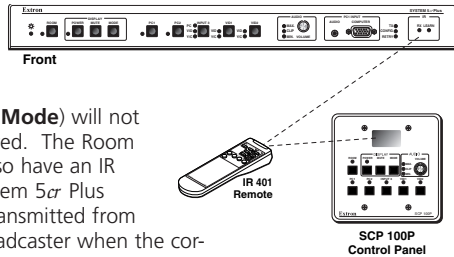
The buttons on the IR 401 duplicate the System 5 α Plus's front panel controls for normal operation. See the other side of this card for details. The switcher responds to commands from the IR 401 as if that button were pressed on the switcher. From a distance of no more than 50 feet, the IR 401 sends infrared (IR) signals to the System 5 α Plus via the switcher's front panel IR port or the IR port of an optional SCP 100P control pad. The carrier frequency is 38 kHz.

NOTE Learning and other setup operations cannot be done from the IR 401.

Learned IR Commands

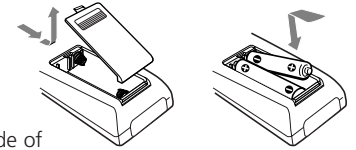
IR commands for controlling the projector must either be "learned" through the front panel, or downloaded from Extron's IR library and stored in the switcher's memory.

The three Display buttons (**Power**, **Mute**, and **Mode**) will not function until those commands have been stored. The Room button and each input selection button can also have an IR command associated with it. Refer to the System 5 α Plus User's Manual for details. IR commands are transmitted from the switcher's IR emitter or the optional IR Broadcaster when the corresponding button is pressed on the IR 401, the SCP control pad, or the switcher's front panel.



IR 401 Remote Control Instruction Guide

Install two AAA batteries as shown at right.



Operation

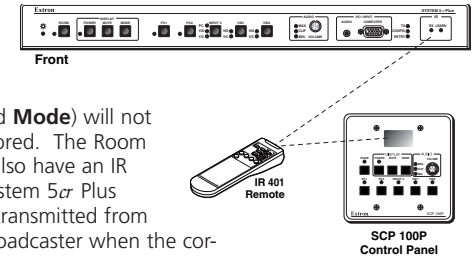
The buttons on the IR 401 duplicate the System 5 α Plus's front panel controls for normal operation. See the other side of this card for details. The switcher responds to commands from the IR 401 as if that button were pressed on the switcher. From a distance of no more than 50 feet, the IR 401 sends infrared (IR) signals to the System 5 α Plus via the switcher's front panel IR port or the IR port of an optional SCP 100P control pad. The carrier frequency is 38 kHz.

NOTE Learning and other setup operations cannot be done from the IR 401.

Learned IR Commands

IR commands for controlling the projector must either be "learned" through the front panel, or downloaded from Extron's IR library and stored in the switcher's memory.

The three Display buttons (**Power**, **Mute**, and **Mode**) will not function until those commands have been stored. The Room button and each input selection button can also have an IR command associated with it. Refer to the System 5 α Plus User's Manual for details. IR commands are transmitted from the switcher's IR emitter or the optional IR Broadcaster when the corresponding button is pressed on the IR 401, the SCP control pad, or the switcher's front panel.



IR 401 Remote Control Instruction Guide, continued

Display Power — After the System 5 σ Plus switcher is programmed (set up) with learned or downloaded commands, press this button to toggle the projector's power on or off. The switcher's Display Power LED blinks fast during projector power up and slowly during projector power down.

Display Mute — After setup, this button functions as the display's mute on/off switch.

Display Mode — After the switcher is set up, this button changes the mode of the display/projector between computer video, S-video, and composite video. It takes the place of the single-button (step) mode function found on some projectors' remote controls.

Each of the following buttons can have one "learned"/downloaded IR command associated with it:

Room — This toggles the switcher's relay contacts to control items such as lights and display screens. Refer to the System 5 σ Plus User's Manual for details.

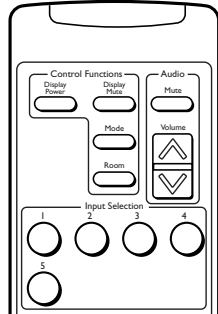
PC 1 & PC 2 — Press these buttons to select input 1 (PC 1 on the switcher's front panel) or input 2 (PC 2 on the switcher's rear panel), respectively. Both inputs accept only RGB computer video and audio.

Input 3 — This corresponds to the System 5 σ Plus's Input 3, which can be configured to accept audio and RGB, or S-video, or composite video. It also corresponds to the System 5 σ 's PC 3, which accepts computer video and audio.

VID 1 & VID 2 — Press these to select input 4 (Vid 1) or input 5 (Vid 2). Both can be configured for audio and either S-video or composite video.

+ and - — Press these buttons to adjust the audio output volume.

Mute — Press this button to toggle audio output on and off.



Extron Electronics, USA
1280 South Lewis Street, Anaheim, CA 92805
909.633.9876 714.691.1500 FAX: 714.491.1517
USA

Extron Electronics, Europe
Beeldschermweg 6C, 3821 AH Amersfoort
+31-33-453-6060 FAX: +31-33-453-4050
The Netherlands

Extron Electronics, Asia
135 Joo Seng Rd. #04-01, PM Industrial Bldg.
+65-383-4400 FAX: +65-383-4664
Singapore 368363

Extron Electronics Information
ExtronWEB™: www.extron.com 68-517-01
ExtronFAX™: 714-491-0192
24-hour access—worldwide! Rev. B, 05 01

IR 401 Remote Control Instruction Guide, continued

Display Power — After the System 5 σ Plus switcher is programmed (set up) with learned or downloaded commands, press this button to toggle the projector's power on or off. The switcher's Display Power LED blinks fast during projector power up and slowly during projector power down.

Display Mute — After setup, this button functions as the display's mute on/off switch.

Display Mode — After the switcher is set up, this button changes the mode of the display/projector between computer video, S-video, and composite video. It takes the place of the single-button (step) mode function found on some projectors' remote controls.

Each of the following buttons can have one "learned"/downloaded IR command associated with it:

Room — This toggles the switcher's relay contacts to control items such as lights and display screens. Refer to the System 5 σ Plus User's Manual for details.

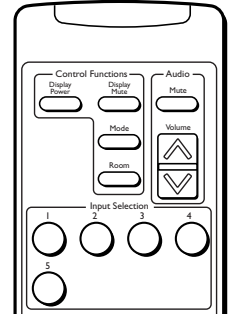
PC 1 & PC 2 — Press these buttons to select input 1 (PC 1 on the switcher's front panel) or input 2 (PC 2 on the switcher's rear panel), respectively. Both inputs accept only RGB computer video and audio.

Input 3 — This corresponds to the System 5 σ Plus's Input 3, which can be configured to accept audio and RGB, or S-video, or composite video. It also corresponds to the System 5 σ 's PC 3, which accepts computer video and audio.

VID 1 & VID 2 — Press these to select input 4 (Vid 1) or input 5 (Vid 2). Both can be configured for audio and either S-video or composite video.

+ and - — Press these buttons to adjust the audio output volume.

Mute — Press this button to toggle audio output on and off.



Extron Electronics, USA
1280 South Lewis Street, Anaheim, CA 92805
909.633.9876 714.691.1500 FAX: 714.491.1517
USA

Extron Electronics, Europe
Beeldschermweg 6C, 3821 AH Amersfoort
+31-33-453-6060 FAX: +31-33-453-4050
The Netherlands

Extron Electronics, Asia
135 Joo Seng Rd. #04-01, PM Industrial Bldg.
+65-383-4400 FAX: +65-383-4664
Singapore 368363

Extron Electronics Information
ExtronWEB™: www.extron.com 68-517-01
ExtronFAX™: 714-491-0192
24-hour access—worldwide! Rev. B, 05 01

IR 401 Remote Control Instruction Guide, continued

Display Power — After the System 5 σ Plus switcher is programmed (set up) with learned or downloaded commands, press this button to toggle the projector's power on or off. The switcher's Display Power LED blinks fast during projector power up and slowly during projector power down.

Display Mute — After setup, this button functions as the display's mute on/off switch.

Display Mode — After the switcher is set up, this button changes the mode of the display/projector between computer video, S-video, and composite video. It takes the place of the single-button (step) mode function found on some projectors' remote controls.

Each of the following buttons can have one "learned"/downloaded IR command associated with it:

Room — This toggles the switcher's relay contacts to control items such as lights and display screens. Refer to the System 5 σ Plus User's Manual for details.

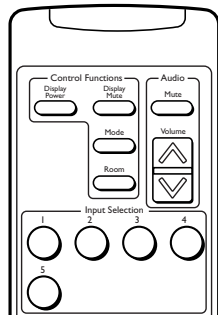
PC 1 & PC 2 — Press these buttons to select input 1 (PC 1 on the switcher's front panel) or input 2 (PC 2 on the switcher's rear panel), respectively. Both inputs accept only RGB computer video and audio.

Input 3 — This corresponds to the System 5 σ Plus's Input 3, which can be configured to accept audio and RGB, or S-video, or composite video. It also corresponds to the System 5 σ 's PC 3, which accepts computer video and audio.

VID 1 & VID 2 — Press these to select input 4 (Vid 1) or input 5 (Vid 2). Both can be configured for audio and either S-video or composite video.

+ and - — Press these buttons to adjust the audio output volume.

Mute — Press this button to toggle audio output on and off.



Extron Electronics, USA
1280 South Lewis Street, Anaheim, CA 92805
909.633.9876 714.691.1500 FAX: 714.491.1517
USA

Extron Electronics, Europe
Beeldschermweg 6C, 3821 AH Amersfoort
+31-33-453-6060 FAX: +31-33-453-4050
The Netherlands

Extron Electronics, Asia
135 Joo Seng Rd. #04-01, PM Industrial Bldg.
+65-383-4400 FAX: +65-383-4664
Singapore 368363

Extron Electronics Information
ExtronWEB™: www.extron.com 68-517-01
ExtronFAX™: 714-491-0192
24-hour access—worldwide! Rev. B, 05 01

IR 401 Remote Control Instruction Guide, continued

Display Power — After the System 5 σ Plus switcher is programmed (set up) with learned or downloaded commands, press this button to toggle the projector's power on or off. The switcher's Display Power LED blinks fast during projector power up and slowly during projector power down.

Display Mute — After setup, this button functions as the display's mute on/off switch.

Display Mode — After the switcher is set up, this button changes the mode of the display/projector between computer video, S-video, and composite video. It takes the place of the single-button (step) mode function found on some projectors' remote controls.

Each of the following buttons can have one "learned"/downloaded IR command associated with it:

Room — This toggles the switcher's relay contacts to control items such as lights and display screens. Refer to the System 5 σ Plus User's Manual for details.

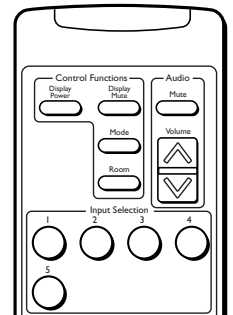
PC 1 & PC 2 — Press these buttons to select input 1 (PC 1 on the switcher's front panel) or input 2 (PC 2 on the switcher's rear panel), respectively. Both inputs accept only RGB computer video and audio.

Input 3 — This corresponds to the System 5 σ Plus's Input 3, which can be configured to accept audio and RGB, or S-video, or composite video. It also corresponds to the System 5 σ 's PC 3, which accepts computer video and audio.

VID 1 & VID 2 — Press these to select input 4 (Vid 1) or input 5 (Vid 2). Both can be configured for audio and either S-video or composite video.

+ and - — Press these buttons to adjust the audio output volume.

Mute — Press this button to toggle audio output on and off.



Extron Electronics, USA
1280 South Lewis Street, Anaheim, CA 92805
909.633.9876 714.691.1500 FAX: 714.491.1517
USA

Extron Electronics, Europe
Beeldschermweg 6C, 3821 AH Amersfoort
+31-33-453-6060 FAX: +31-33-453-4050
The Netherlands

Extron Electronics, Asia
135 Joo Seng Rd. #04-01, PM Industrial Bldg.
+65-383-4400 FAX: +65-383-4664
Singapore 368363

Extron Electronics Information
ExtronWEB™: www.extron.com 68-517-01
ExtronFAX™: 714-491-0192
24-hour access—worldwide! Rev. B, 05 01