

JCB LUBRICANTS



A Product of Hard Work



JCB LUBRICANTS | INTRODUCTION



You choose a JCB machine because it's the best in the business
You choose JCB lubricants because they will help maximise your investment

JCB never compromises when it comes to the strength and performance of its machines. So, we have also made sure that you can keep your investment operating at peak performance and productivity with a range of lubricants, greases and accessories designed specifically with you in mind, being totally matched to your machine.

The comprehensive range of JCB lubricants has been approved by JCB engineers to ensure that your engine, transmission, hydraulic system and other key components receive the optimum level of protection, lengthening component life and keeping down your costs of ownership.

A smart choice for a broad range of agricultural requirements

Single versatile product

Reduced storage and handling costs

No risk of incorrect application

JCB Universal Agricultural Oil

JCB Standard: 4004/0300 Sizes available: 20ltr, 200ltr, 1000ltr

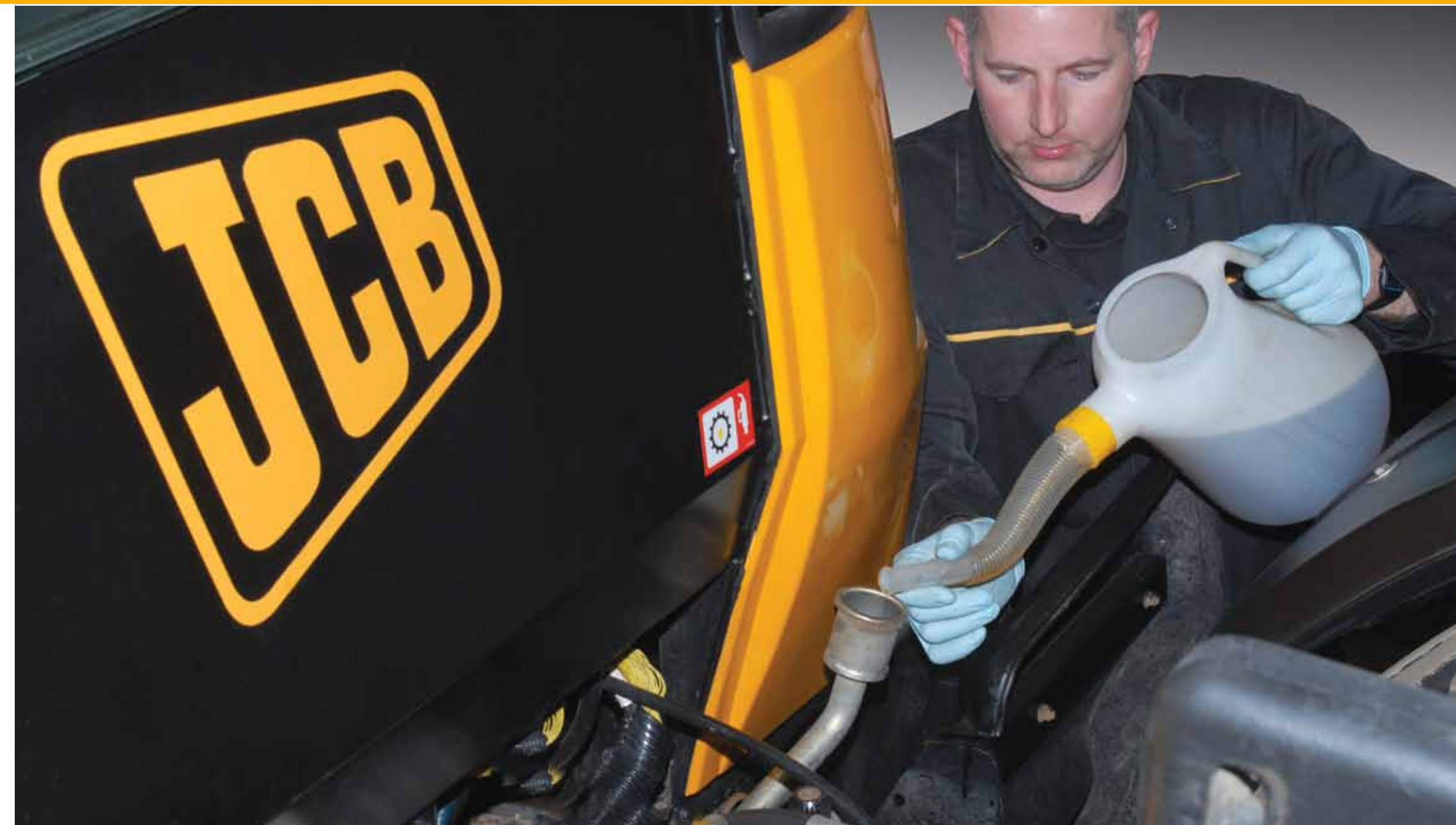
A truly multipurpose oil which is suitable for naturally aspirated, turbocharged engines, transmissions (including wet brake systems) and hydraulics. JCB Universal Agricultural Oil can also be used in power steering and power take-offs where an engine oil is specified. This SAE 10W30 viscosity product has good fluidity, ensuring easy starting and rapid hydraulic response even in the most severe weather conditions.

Performance Classifications:

API CF-4/SF, API GL-4

Manufacturers' Standards:

Case MS 1118, MS 1209 • Ford ESN-M2C-41-B, -121-E, -134-C, -159-C • Massey Ferguson CMS M1127, 1135, 1139, 1141, 1144 • Caterpillar TO-2 • Allison C-4 • New Holland NH 024C, 324B, 410B • ZF TE-ML 06 B, 07 B



You can be sure of the performance and confident of the protection offered by JCB Engine Oils

High quality base oils

Carefully selected additives

Meet or exceed international specifications



JCB Optimum Performance Engine Oil 15W40

JCB Standard: 4001/2800 **Sizes available:** 5ltr, 20ltr, 200ltr, 1000ltr

JCB Optimum Performance Engine Oil 15W40 is a super high performance diesel engine lubricant designed for the lubrication of low emission Euro 4 engines and Euro 3 engines. It can be used in all high performance four stroke diesel engines operating on low sulphur diesel fuel (<0.05% mass) and under severe heavy duty conditions. Extended oil drain intervals, as indicated by the OEM for high quality diesel engine oils, can be applied. The diesel engines may be normally aspirated, turbocharged or supercharged, with or without intercooling and fitted in commercial vehicles or off-highway equipment. It is also suitable for application in passenger cars with petrol or diesel engines. **This oil meets API CI-4 specification.**

Performance Classifications: API CI-4/SL, ACEA E7, E5, E3, B4, B3, A3
Manufacturers' Standards: MAN M3275 • MB 228.3 • Volvo VDS-3 • MTU Type 2 • Mack EO-M Plus • Cummins CES 20071, -72, -76, -77, -78 • World-wide DHD-1 • Caterpillar ECF-1 & ECF-2 • Renault VI RLD & RLD-2 • ZF TE-ML 04C, 07C • Exceeds requirements of DAF, IVECO and Scania. Recommended for applications where the lubricant quality is described in terms of JDQ 78A

JCB Engine Oil EP 15W40

JCB Standard: 4001/1800 **Sizes available:** 5ltr, 20ltr, 200ltr, 1000ltr

An advanced, high specification engine oil, suitable for use on and off highway and in commercial vehicle applications, including those meeting Euro 3 exhaust emission regulations. Its outstanding protection for naturally aspirated, turbocharged and supercharged engines makes it the ideal choice for both single and mixed fleet operations.

Performance Classifications: API CH-4/SJ, ACEA E5, E3, B3, A3
Manufacturers' Standards: MAN • M3275 • MB 228.3 • MTU Type 2 • Mack EO-M Plus, Cummins CES 20071, -72, -76, -77 • Exceeds requirements of DAF, IVECO, RVI and Scania

JCB Engine Oil HP 15W40

JCB Standard: 4001/1500 **Sizes available:** 5ltr, 20ltr, 200ltr, 1000ltr

A premium quality engine oil specially formulated to meet the needs of heavy duty naturally aspirated, turbocharged and supercharged engines to optimise the performance of the mixed fleet. The API CF-4/SG rating ensures that it has excellent anti-sludge and detergent/dispersant properties, to keep the engine clean and deposit free. In addition this versatile product is qualified for various transmission oil specifications. It is ideal for use in construction, agricultural, haulage and passenger vehicles.

Performance Classifications: API CF-4/SG, ACEA E2
Manufacturers' Standards: MIL-L-46152E • MIL-L-2104E • Ford ESE-M2C153-E • GM 6094M • MAN 271 • Mercedes-Benz 228.1 & 229.1, RVI SHPD E2-R • Volvo VDS • Scania • Volkswagen TL-VW 501.01, 505.00

Transmission specifications: Allison C-4 • Caterpillar TO-2 • ZF TE-ML 04C, ZF TE-ML 07C

JCB Engine Oil HP 10W30

JCB Standard: 4001/1700 **Sizes available:** 5ltr, 20ltr, 200ltr, 1000ltr

A premium quality engine oil, specially formulated to meet the needs of heavy duty naturally aspirated, turbocharged and supercharged engines, to optimise the performance of the mixed fleet. The API CF-4/SG rating ensures that it has excellent anti-sludge and detergent/dispersant properties to keep the engine clean and deposit free. In addition this versatile product is qualified for various transmission oil specifications. It is ideal for use in construction, agricultural, haulage and passenger vehicles.

Performance Classifications: API CF-4/CF/SG
Manufacturers' Standards: Ford ESE - M2C153-E • GM6094M
Transmission specifications: Allison C-3 • Caterpillar TO-2 • ZF TE-ML 03, ZF TE-ML 07

JCB Engine Oil HP 20W50

JCB Standard: 4001/1900 **Sizes available:** 5ltr, 20ltr, 200ltr

A premium quality engine oil specially formulated to meet the needs of heavy duty naturally aspirated, turbocharged and supercharged engines to optimise the performance of the mixed fleet. The API CF-4/SG rating ensures that it has excellent anti-sludge and detergent/dispersant properties to keep the engine clean and deposit free. In addition this versatile product is qualified for various transmission oil specifications. It is ideal for use in construction, agricultural, haulage and passenger vehicles.

Performance Classifications: API CF-4/CF/SG, ACEA E2, B2, A2
Manufacturers' Standards: MIL-L-46152E • MIL-L-2104E • Ford ESE-M2C153-E • GM 6094M • MAN 271 • Mercedes-Benz 228.1 & 229.1, RVI SHPD E2-R • Volvo VDS • Scania • Volkswagen TL-VW 501.01, 505.00

Transmission specifications: Allison C-4 • Caterpillar TO-2 • ZF TE-ML 04C, ZF TE-ML 07C

JCB Engine Oil HP SAE30

JCB Standard: 4001/0300 **Sizes available:** 5ltr, 20ltr, 200ltr

A versatile, high performance engine oil for diesel engines in commercial vehicles and plant operating under moderate and heavy conditions, where a monograde oil is prescribed or preferred. JCB Engine Oil HP SAE 30 can also be used as a gear, transmission or hydraulic lubricant. Its excellent anti-sludge and detergent/dispersant properties keep the engine clean and deposit free.

Performance Classifications: API CD/SF/CDII, CCMC G2, PDI, D2
Manufacturers' Standards: MIL-L-46152-C • MIL-L-2104C • Mercedes-Benz 227.0 • MAN 270 • Clark Form TLC-25 3M8-83 • DANA Spicer Bulletin 2508-9
Transmission specifications: Eaton/Fuller Bulletin 2052 • Voith • ZF TE-ML 03 • Allison C-3 • Caterpillar TO-2

JCB Cold Climate Engine Oil 5W40

JCB Standard: 4002/2700 **Sizes available:** 5ltr, 20ltr, 200ltr, 1000ltr

JCB Cold Climate Engine Oil EP 5W/40 is a high performance synthetic diesel engine lubricant which is specially formulated to offer superior cold start properties. With a pour point of -30°C it is an ideal choice for off-highway equipment operating in low temperature conditions below -10°C. In addition it offers protection against corrosion and rust and the increased wear found in cold start conditions.

This product has been specifically introduced for the JCB Dieselmex T3 engine when used in extremely cold climates and offers excellent, cost effective protection for your equipment. This product can also be used in applicable passenger cars and vans with normally aspirated or turbocharged petrol or diesel engines.

Performance Classifications: API CH-4/CG-4/CF-4/CF/SJ, SAE 5W40, ACEA E2, B3, A3



Maintaining a super clean hydraulic system ensures minimum downtime

High quality base oil and sophisticated additives

Filtered to higher than normal tolerances

Extended component life and reduced downtime

JCB Optimum Performance Hydraulic Fluid 46

JCB Standard: 4002/2000 **Sizes available:** 5ltr, 20ltr, 200ltr, 1000ltr

JCB Optimum Performance Hydraulic Fluid 46 is a shear stable top quality hydraulic oil that meets the arduous demands of most off highway plant and stationary hydraulic systems exposed to wide temperature fluctuations. In particular it protects against shearing, which is the permanent loss of viscosity due to mechanical or oxidation breakdown. It also offers excellent protection against rust, corrosion and metal fatigue, combined with "keep clean" additives to prevent clogging of filters, ensuring long life to the system's components. This hydraulic fluid may be offered to those demanding the highest quality lubricants available. Tests by JCB engineers have shown that use of this fluid can reduce fuel consumption and improve machine productivity.

Specifications and manufacturers' standards: DIN 51524, part 3, category HVLP • ISO 11158, category HV • SS 155434, category AV • Denison HF-0, HF-1, HF-2 • AFNOR 48-603, category HV

JCB Hydraulic Fluid EP 46

JCB Standard: 4002/1600 **Sizes available:** 5ltr, 20ltr, 200ltr, 1000ltr

A high viscosity index (VI) multigrade antiwear hydraulic fluid, which retains its multigrade properties over a wide range of applications and climatic conditions. Manufactured from the highest quality solvent refined base stocks and special additives, it will remain at specification throughout its life, giving superb performance between service intervals.

Specifications and manufacturers' standards: DIN 51524, Part 3, category HVLP • Cincinnati Milacron P70 • AFNOR NFE 48-690 (dry), 691 (wet) • Denison HF-1, HF-2, HF-0 • Vickers M-2950-s (Mobile) • Vickers I - 286-S Industrial • ISO 11158 category HV • CETOP RR 91 H • US Steel 126, 127 Poclain Excavators ISO 46



JCB Hydraulic Fluid HP 46

JCB Standard: 4002/0800 **Sizes available:** 5ltr, 20ltr, 200ltr, 1000ltr

A top quality hydraulic fluid based on the latest low zinc technology, combining anti-wear performance with excellent filterability in both wet and dry conditions. Specially formulated from solvent refined base oil, containing a superior additive package, which not only provides outstanding performance but also reduces pump, motor and valve wear. JCB Hydraulic Fluid HP 46 provides excellent protection against corrosion and metal fatigue, combined with superb filterability characteristics ensuring long service life.

Specifications and manufacturers' standards: ISO 11158, category HM • SS 155434, category AM • DIN 51524, Part 2, category HLP • Cincinnati Milacron P-70 • Vickers M-2950-S • Denison HF-O

JCB Hydraulic Fluid HP 32

JCB Standard: 4002/1000 **Sizes available:** 5ltr, 20ltr, 200ltr, 1000ltr

A high quality hydraulic fluid, based on the latest low zinc technology, combining anti-wear performance with excellent filterability in both wet and dry conditions. Specially formulated from solvent refined base oil, containing a superior additive package, which not only provides outstanding performance but also reduces pump, motor and valve wear. JCB Hydraulic Fluid HP 32 provides excellent protection against corrosion and metal fatigue, combined with superb filterability characteristics ensuring long service life.

Specifications and manufacturers' standards: ISO 11158, category HM • SS 155434, category AM • DIN 51524, Part 2, category HLP • Cincinnati Milacron P-68 • Vickers M-2950-S • Denison HF-O

JCB Hydraulic Fluid HP 15

JCB Standard: 4002/0500 **Sizes available:** 1ltr, 5ltr

A premium, shear stable anti wear ISO 15 mineral hydraulic fluid, formulated for good low flow characteristics at low ambient temperatures.

Specifications and manufacturers' standards: ISO 11158, category HV • DIN 51524, Part 3 category HVLP

JCB Hydraulic Fluid HP 68

JCB Standard: 4002/0700 **Sizes available:** 20ltr, 200ltr

A top quality anti-wear hydraulic oil, specially designed to meet the stringent filterability requirements of modern tools and electro-hydraulic systems, for use in machines where accurate indexing, positioning and sequencing depends on oil quality. Manufactured from the highest quality solvent refined base stocks and special additives. The formulation is based on the latest low-zinc technology, combining high anti-wear performance with excellent filterability in both wet and dry conditions. It is fully inhibited to keep systems free of corrosion and sludging and is highly resistant to foaming.

Specifications and manufacturers' standards: ISO 11158, category HM • SS 155434, category AM • DIN 51524, Part 2, category HLP • Cincinnati Milacron P-69 • Vickers M-2950-S • Denison HF-O

JCB Biodegradable Hydraulic Fluid 46

JCB Standard: 4002/2600 **Sizes available:** 20ltr, 200ltr, 1000ltr

This oil is suitable for most types of hydraulic plant and equipment, where leaks or accidental spillage could result in the contamination of soil, water or ground water. **It is also compatible with all previous JCB Biodegradable Hydraulic Oil offerings.** Typical uses include: mobile plant associated with forestry, water management, inland waterways, dockyards, agriculture, construction, quarrying, refuse collection, landfill, water treatment, road building, railroads and mining. It is a non mineral, ecologically acceptable hydraulic fluid (EAHF) based on Synthetic Ester technology, which ensures equal high temperature and anti-wear performance to that of conventional mineral hydraulic oils. It meets the requirements of VDMA (draft DIN for EAHFs) HEES 46 and is 100% Biodegradable under the CEC L-33-T-82 method.

Specifications and manufacturers' standards: DIN 51524, part 3, category HVLP (except oxidation stability D943) • ISO 11158, category HV (except oxidation stability D943) • Draft DIN specification for HE type fluids • ISO 15380, HEES type • SS 155434, category BV • Dutch VAMIL regulation • VDMA 24586 • Denison HF-2 & HF-6



High quality gear oils

Improved performance

High levels of wear protection

Suitable for a wide range of applications



JCB Optimum Performance Gear Oil

JCB Standard: 4003/3700 **Sizes available:** 5ltr, 20ltr, 200ltr, 1000ltr
JCB Optimum Performance Gear Oil has been specially developed as a universal gear oil to satisfy both the drum and gear lubrication requirements of the JCB Vibromax range of machines.

Performance classifications: DIN 51517 part 3, category CLP.
ISO 12925-1, Type CKC-CKD. AGMA 9005-D94 (5EP, 6EP & 7EP)
Manufacturers' standards: Jahnelt-Kestermann Getriebewerke GmbH & Co KG

JCB Gear Oil EP 85W140

JCB Standard: 4000/0600 **Sizes available** - 5ltr, 20ltr, 200ltr, 1000ltr
A heavy duty multigrade gear lubricant, suitable for use in gearboxes and final drives, where special anti-wear protection is required. The high quality additive package and unique base oils protect against rust and corrosion, extending component life. Particularly suited for hypoid and spiral bevel type gears in commercial vehicles, off-highway equipment and passenger cars operating in moderate to heavy conditions.

Performance classifications: API GL-5, MIL-L-2105D (multigrades), British Ministry of Defence CS 3000B
Manufacturers' standards: JI Case MS 1316 • Clark MS-8 Rev. I • Clark Form No. ALC-I 5M 7-80 KE, TLC-25 3M 8-83 • John Deere JDM JIID/E • Eaton Bulletin 2053, 6007, Eaton/Fuller Bulletin 2052 • Ford SM-2C-1011A SQM-2C9002-AA • Fuller Form 121 • General Motors Pt. no. 88 63 370, 85 476 • Komatsu Dresser B22-0003, B22-0005 • MAN 342 • Mercedes-Benz page 235.0 • Rockwell Int 0-76 • VME Americas EEMS 19003F • Volvo 97310 • ZF TE-ML 01, 05, 07, 12A

JCB Gear Oil HP

JCB Standard: 4000/0500 **Sizes available:** 20ltr, 200ltr, 1000ltr
A highly refined paraffinic mineral oil, containing extreme pressure additives and friction modifiers, suitable for a wide range of applications including: axles, oil-immersed brakes, clutches, transmissions and hydraulics.

Performance classifications: API GL-4
Manufacturers' standards: Case MS 1209 (Hy-Tran Plus, transmissions, hydraulics, wet brakes) • Case UK/David Brown • John Deere JDM J20C • Fiat AF 87 • Ford New Holland ESEN-M2C86-B Komatsu Dresser B06-0002 • Landini UTTO • Massey Ferguson CMS M 1127, 1135, 1141 • SAME UTTO (past 1981 models) • Valmet/Volvo BM UTTO (transmissions, hydraulics) • Allison C-3 (automatic transmissions) • Caterpillar TO-2 (transmissions)

JCB Gear Oil HP Plus

JCB Standard: 4000/2200 **Sizes available:** 5ltr, 20ltr, 200ltr, 1000ltr
A high performance gear oil with enhanced viscosity stability for consistent protection throughout its service life. In addition to ensuring excellent wear resistance for valves, pumps and gears, its unique formulation offers outstanding squawk and chatter control in oil immersed brake systems.

Performance classifications: API GL-4
Manufacturers' standards: Ford New Holland ESN-M2C 41-B, 132-D • John Deere JDM J20C • Massey Ferguson CMS M 1127, 1135, 1141, 1143 • Case MS 1207, 1210, 1230 • White New Idea Q-1802, Q-1826 • Caterpillar TO-2, Allison C-3 and C-4

JCB Gear Oil LS Plus

JCB Standard: 4000/3900 **Sizes available:** 5ltr, 20ltr, 200ltr, 1000ltr
An SAE 80W90 multipurpose limited slip gear oil designed for use in hypoid gears, axles and final drives. It is especially suited for those with wet brake plates and limited slip (LS) differentials. This oil also offers reduced 'Brake Chatter' and improved mechanical transmission component life along with excellent extreme pressure protection. JCB Gear Oil LS Plus can be used for both on and off-highway equipment.

Performance classifications: API GL-5
Manufacturers' standards: JDQ-96(JD J20C)

JCB Gear Oil HP 90

JCB Standard: 4000/0300 **Sizes available:** 5ltr, 20ltr, 200ltr, 1000ltr
A heavy duty multipurpose gear oil, formulated for gear type transmissions, spiral bevelled and hypoid drive axles, operating within a very wide oil temperature range (up to 150°C) and worm gear final drives (up to 100°C). It contains extreme pressure additives to give high level wear protection under high speed, high torque and shock loading conditions.

Performance classifications: API GL-5, MIL-L-2105B (monogrades) British Ministry of Defence CS 3000B
Manufacturers' standards: JI Case MS 1316 • Clark MS-8 Rev.I • Clark Form No. ALC-I 5M 7-80 KE, TLC-25 3M 8-83 • John Deere JDM J11D/E • Eaton Bulletin 2053, 6007 • Eaton/Fuller Bulletin 2052 • Ford SM-2C-1011A SQM-2C9002-AA • Fuller Form 121 • General Motors Pt. no. 88 63 370, 85 476 • Komatsu Dresser B22-0003, B22-0005 • MAN 342 • Mercedes-Benz page 235.0 • Rockwell International 0-76 • VME Americas EEMS 19003F • Volvo 97310 • ZF TE-ML 01 • ZF TE-ML 05 • ZF TE-ML 07 • ZF TE-ML 12A

JCB Gear Oil EP 80W90

JCB Standard: 4004/5100 **Sizes available:** 20ltr, 200ltr
A heavy duty multigrade gear lubricant, suitable for use in gearboxes and final drives where special anti-wear protection is required. The high quality additive package and unique base oils protect against rust and corrosion, extending component life. This oil is particularly suited for hypoid and spiral bevel type gears in commercial vehicles, off-highway equipment and passenger cars operating in moderate to heavy conditions.

Performance classifications: API GL-5, MIL-L-2105D (multi-grades), MIL-L-2105B (monogrades) British Ministry of Defence CS 3000B
Manufacturers' standards: JI Case MS 1316 • Clark MS-8 Rev.I • Clark Form No. ALC-I 5M 7-80 KE, TLC-25 3M 8-83 • John Deere JDM J11D/E • Eaton Bulletin 2053, 6007 • Eaton/Fuller Bulletin 2052 • Ford SM-2C-1011A SQM-2C9002-AA • Fuller Form 121 • General Motors Pt. no. 88 63 370, 85 476 • Komatsu Dresser B22-0003, B22-0005 • MAN 342 • Mercedes-Benz page 235.0 • Rockwell International 0-76 VME Americas EEMS 19003F • Volvo 97310 • ZF TE-ML 01 • ZF TE-ML 05 • ZF TE-ML 07 • ZF TE-ML 12A



High quality
transmission fluids

High levels of wear protection

Suitable for a wide range of applications



JCB Optimum Performance Transmission Fluid

JCB Standard: 4004/6300 Size available: 20ltr

A high quality transmission fluid uniquely designed for use on JCB Fastrac machines fitted with V-Tronic transmissions. Its universal properties make it suitable for use in engines, wet brake systems, final drives and hydraulic systems.

Manufacturers' standards: API CE/SF/CF • API CG-4, API GL-3/GL-4, ACEA E3 • ZF TE-ML 06B, 06C • MB227.1 • JCB Fastrac (CVT) • AGCO CVT ML 200 • Allison C4 (Auto Trans) • Massey Ferguson CMS M 1135, 1139, 1143, 1144 • John Deere J20C & J27 • Ford M2C134D, M2C159B, M2C159C (STOU) • New Holland NH 03C, NH 024C (STOU), NH 410B, NH420A • CNH MAT 3525, 3526

JCB Optimum Performance Clutch Fluid

JCB Standard: 4002/1904 Size available: 1ltr

A highly specialised fluid designed for use in JCB Fastrac V-Tronic clutch systems. This fluid is also suitable for power steering, rear axle steering, level control, hydro-pneumatic suspension, shock absorbers, stability and traction systems (ABS/ASR/ASC) and central locking systems. It can also perform in many specialist applications, such as electro-hydraulic cabriolet actuation systems.

Manufacturers' standards: ISO 7308 • MAN 3623/93 • Daimler Chrysler MB 345.0 • Opel B 040 0070 • Volkswagen TL 52146

JCB Transmission Fluid EP 10W

JCB Standard: 4000/2500 Sizes available: 5ltr, 20ltr, 200ltr, 1000ltr

A high quality transmission lubricant recommended for off-highway, construction and agricultural equipment. Its primary use is in powershift transmissions, final drives, hydrostatic transmissions, torque converters and hydraulic systems.

Manufacturers' standards: Caterpillar TO-4 • Allison C-4 • Eaton (certain transmissions, see operating manual)

JCB Transmission Fluid EP SAE 30

JCB Standard: 4000/2600 Sizes available: 5ltr, 20ltr, 200ltr, 1000ltr

A high quality transmission lubricant recommended for off-highway, construction and agricultural equipment. Its primary use is in powershift transmissions, final drives, hydrostatic transmissions, torque converters and hydraulic systems.

Manufacturers' standards: Caterpillar TO-4 • Allison C-4 • Eaton (certain transmissions, see operating manual)

JCB Torque Converter Fluid

JCB Standard: 4000/0200 Sizes available: 5ltr, 20ltr, 200ltr, 1000ltr

A versatile product that is designed to cater for the needs of both engines and transmissions. It is ideal for use in high performance diesel engines where a monograde SAE 10W is required. Rationalisation benefits can be obtained by using it as a gear and transmission lubricant.

Performance classifications: API CD/SF/CDII, CCMC G2, PD1 and D2, American military MIL-L-46152-C and MIL-L-2104C

Manufacturers' standards: Mercedes-Benz page 227.0 • MAN 270 • Clark Form TLC-25 3M8-83 • DANA Spicer Bulletin 2508-9 • Eaton/Fuller Bulletin 2052 • Voith • ZF TE-ML 03 • Allison C-3 • Caterpillar TO-2

JCB HP Universal ATF

JCB Standard: 4000/2300 Sizes available: 5ltr, 20ltr, 200ltr

A versatile product recommended for automatic transmissions and power steering systems, where Dexron IIE and III approved products are acceptable. It is suitable for a variety of applications including: passenger cars, trucks and off-highway equipment.

Manufacturers' standards: Dexron ATF Type IIE, III • Ford Mercon M931004 • Allison C-4 • C4-18741793 • Mercedes Benz 236.1, 236.5 • MAN 339 type F • Voith DIWA (list G 607) • ZF TE-ML 02F, 03D, 04D, 11B, 14A, 17C



JCB greases give high performance protection to hard working machinery

- Long life protection under extreme conditions
- Comprehensive range for all applications
- Optimise maintenance schedules, reduce cost



Special MPL-EP Grease

JCB Standard: 4003/1500 Sizes available: 400g, 12.5kg, 50kg
JCB Special MPL-EP Grease is a true multipurpose grease, recommended for a wide range of lubricating duties, such as pivot pins and wheel bearings, where excellent antiwear and antirust performance is required. Its EP additive makes it particularly suitable for the shock load and vibrating conditions found on automotive, industrial, agricultural and earthmoving equipment.
Colour: Brown Soap Type: Lithium NLGI: 2
Drop Point (IP132): 180°C
Working Temperature Range: -20°C to 130°C

Extreme Performance Hammer Grease

JCB Standard: 4003/2100 Sizes available: 400g, 12.5kg
JCB Extreme Hammer Grease is a unique formulation aluminium complex grease for use where extremes of pressure and temperature are likely to be encountered. Particularly suited to hammer applications where resistance to water washing and migration may be critical.
Colour: Black Soap Type: Aluminium Complex NLGI: 2
Drop Point (IP132): 250°C
Working Temperature Range: -20°C to 160°C

Extreme Performance Moly Grease

JCB Standard: 4003/1300 Sizes available: 400g, 12.5kg
JCB Extreme Performance Moly Grease is an advanced performance, multipurpose grease, recommended for heavily loaded bearing surfaces and in particular where limited or oscillating motion causes fretting. The addition of molybdenum disulphide provides extra protection against scoring and wear, making it ideal for automotive, industrial, agricultural and earthmoving equipment.
Colour: Grey black Soap Type: Lithium NLGI: 2
Drop Point (IP132): 185°C
Working Temperature Range: -20°C to 120°C

Special HP Grease

JCB Standard: 4003/2000 Sizes available: 400g, 12.5kg, 50kg
JCB Special HP Grease is a premium quality extreme pressure grease, recommended for use in arduous operating conditions, such as high temperatures, excessive loading and extensive exposure to water. The sophisticated additive package combines with excellent adhesive properties to give high performance protection to hard working automotive, industrial, agricultural and earthmoving equipment, all year round.
Colour: Blue Soap Type: Lithium Complex NLGI: 2
Drop Point (IP132): 245°C
Working Temperature Range: -20°C to 150°C

Special Hammer Grease

JCB Standard: 4003/1100 Size available: 400g
JCB Special Hammer grease provides a highly effective lubricant on slow moving slides, along with an excellent corrosion resistant property. It combines the "self healing" action of oils with the resistance to drip of viscous compounds.
Colour: Dark grey Soap Type: Lithium NLGI: 2
Drop Point (IP132): 185°C
Working Temperature Range: -15°C to 120°C

Special Slide Grease

JCB Standard: 4003/1100 Size available: 400g
JCB Special Slide Grease is formulated to provide excellent protection under heavy load and extreme pressure, where water and dirt are prevalent. It maintains a film of lubrication on slow moving slides by combining excellent resistance to squeeze out with superb corrosion resistance.
Colour: Dark grey Soap Type: Lithium NLGI: 2
Drop Point (IP132): 180°C
Working Temperature Range: -20°C to 120°C

JCB Autogrease

JCB Standard: 4003/2300 Size available: 500g
JCB AUTOGREASE is for use with the JCB AUTOGREASE system, used on JCB's large breaker range. This mineral oil based paste, containing an aluminium complex soap and solid lubricants, is suitable for use under water, or in high ambient temperatures. The specially designed cartridges screw into the AUTOGREASE system fitted to the breaker housing. The clear cartridge allows the operator to easily monitor the grease usage from within the cab.
Colour: Black Soap Type: Aluminium Complex, solid lubricants NLGI: 2
Drop Point (IP132): 260°C
Working Temperature Range: -20°C to 110°C

Special Slew Pinion Grease

JCB Standard: 4003/1600 Size available: 300g
JCB Special Slew Pinion Grease is a soft, black, tenacious grease designed specifically for the lubrication of large and heavy-duty open gears. Excellent corrosion protection and load carrying properties throughout a large temperature range.
Colour: Black Soap Type: Organically modified clay NLGI: 2
Drop Point (IP132): n/a
Working Temperature Range: -40°C to 100°C



A wide selection of lubricant related products

Comprehensive range for all applications

High quality products for maximum protection



JCB Antifreeze HP/Coolant

JCB Part numbers: 4006/1101 - 5ltr, 4006/1120 - 20ltr, 4006/1103 - 200ltr. **Sizes available:** 5ltr, 20ltr, 200ltr

An ethylene glycol based engine coolant concentrate, tested and proven in heavy duty applications, using established inhibitor technology, it is phosphate and amine free. The sophisticated silicate stabilisation technology eliminates the formulation of silica gel, whilst other additives ensure excellent compatibility with hard water, preventing the build-up of scale.

Manufacturers' standards: ASTM D3306 • ASTM D4985 • ASTM D6210 • SAE J1034 • BS6580 (1992) • AFNOR NF R15-601

Waxoyl

JCB Part numbers: 4004/0501A - 400ml, 4004/0502 - 5ltr, 4004/0505 - 200ltr. **Sizes available:** 400ml aerosol, 5ltr, 200ltr

Recommended for use on telescopic booms and extending dippers, this highly effective rustproofers is suitable for all plant and machinery. Waxoyl expels moisture and forms a self healing skin to prevent rust formation.

- Excellent rust killer
- Years of protection
- Can be used to protect electrical systems from damp

Brake Fluid DOT 4

JCB Part number: 4002/0404 **Size available:** 1ltr

Suitable for virtually all hydraulic and clutch systems, as fitted to passenger cars, commercial vehicles and agricultural machinery. Recommended for use at high operating temperatures generated by disc brakes or when towing.

- Increased safety resulting from anti-vapour lock characteristics
- Good lubricity provides wear protection and trouble free operation
- Metal parts of brake and clutch systems protected against corrosion

Manufacturers' standards: FMVSS 116 DOT 3 • FMVSS 16 DOT 4 • SAE J1703

JCB Readymix HP Antifreeze/Coolant

JCB Part numbers: 4006/1110 - 5ltr, 4006/1115 - 20ltr, 4006/1125 - 200ltr. **Sizes available:** 5ltr, 20ltr, 200ltr

JCB 50/50 antifreeze and engine coolant is an ethylene glycol based solution which combines superior antifreeze and coolant technology with de-mineralised water to provide a quick, easy and efficient solution to your antifreeze and coolant requirements. Ideal in helping prevent the build up of scale where the quality of water supply cannot be guaranteed.

Manufacturers' standards: ASTM D3306 • ASTM D4985 • ASTM D6210 • SAE J1034 3 • BS6580 (1992) • AFNOR NF R15-601

JCB Special Plantwash

JCB Part numbers: 4006/2120 - 20ltr, 993/99174 - 200ltr

Sizes available: 20ltr, 200ltr

JCB Special Plantwash is formulated for use on all types of agricultural, commercial, industrial and earthmoving equipment. It removes dirt, oil, grease and traffic film economically, even when used in cold pressure washers.

- Biodegradable - exceeds EC Standard 82/242
- Use via a hot (max. 60°C) or cold pressure washer
- Can be applied at low pressure for traffic film removal
- Can be used at high pressure for degreasing

JCB Liquid Maintenance

JCB Part number: 993/99166 **Size available:** 400ml aerosol

An ultrafine lubricant with a very high attraction to metal surfaces. Displaces and repels surface moisture and dust.

- Free seized bolts
- Expel moisture from electrical components
- Protect stored tools against corrosion

JCB Chain Lubricant

JCB Part number: 4004/0237A **Size available:** 300ml aerosol

A powerful blend of high penetration lubricant, dewatering agent and corrosion protector. Especially useful for open chain driven gears on agricultural machinery.

- Prolongs chain life by deep penetration into linkages
- Reduces wear by repelling dirt
- Highly effective lubricant and protector

JCB Screenclear

JCB Part number: 4006/0504 **Size available:** 1ltr

This multi purpose product can be used to de-ice when sprayed neat, or diluted and used as a screenwash.

- Protects down to -75°C
- Removes traffic film, asphalt, oil and traces of insects
- Does not harm paintwork or window rubbers

JCB Hydraulic Anti-Stick Additive

JCB Part number: 4004/6704 **Size available:** 1ltr

JCB Anti Stick Additive is specially designed to relieve the 'stick slip' phenomena that can occur with most hydraulic systems. Its friction modifier properties are designed to aid the flow characteristics of the hydraulic system and help relieve the hydraulic cylinder noise that often accompanies 'stick slip'. It is designed for hydraulic systems only and should not be used in common hydraulic, brake and transmission systems.

JCB High Performance Anti-Squawk Fluid

JCB Part number: 4004/3904 **Size available:** 1ltr

A performance supplement for gear oils designed to suppress brake chatter and squawk.

- Fully approved for use on JCB machines
- Specially developed for machines fitted with oil immersed brakes



High quality JCB
accessories

for safe handling
and delivery of lubricant products



MEASURING JUGS

JCB Part numbers: 990/89800 - 1.5ltr, 990/89900 - 5ltr

Sizes available: 1.5ltr, 5ltr

Moulded in tough polythene

Unaffected by oil, petrol, diesel, paraffin, antifreeze, brake fluid, battery acid, etc.

Easy measurement of oil



BARREL PUMP

JCB Part number: 993/99311 (Std),

990/89700 (H/Duty)

Dual thread for steel and plastic drums

Designed to suit 25 and 200 litre drums

Self priming and self venting

500ml delivery per stroke



ROTARY BARREL PUMP

JCB Part number: 990/89600

Capable of handling a wide variety of liquids

Will deliver and retrieve

Delivers up to 840 litres/hour



OIL CANS

JCB Part number: 990/90200

Size available: 1 pint

Supplied with rigid and flexible spouts

JCB Part number: 891/02044

Size available: 1 pint

Supplied with flexible spout only



BARREL CLOSURE KEY

JCB Part number: 990/00080

Removes the bung from steel or plastic drums



SUBMERSIBLE REFUELLING PUMP KIT

JCB Part number: 121/10400

Delivers high volume 1090 litres/hour (240 gallons/hour)

No effort involved - works from 12 volt battery

Handles both diesel and oil. Kit includes lead with crocodile clips, hose and plug for direct connection into beacon socket or protrusion plate light socket

NB: Not designed to run dry



SUPER JUMBO REFUELLING PUMP

JCB Part number: 990/89700

Delivers high volume 2100 litres/hour (460 gallons/hour)

Handles both diesel and oil from barrels

Hand operated, easy to use

Dual Thread

Steel Construction



FUNNELS

JCB Part numbers: 891/02024 - 150mm dia.,

891/02025 - 230mm dia., 990/90000 - 6in,

990/90100 - 9in

Sizes available: 150mm dia., 230mm dia., 6in, 9in

Complete with removable flexible spouts



GREASE PUMP

JCB Part number: 993/79300

Designed to suit 12.5kg kegs



30 litre GRANULE BAG

JCB Part number: 891/02070

For dealing with leaks and spills, absorbs oils, coolants, solvents and other non-aggressive solvents

Lightweight, fast absorbency

18kg ABSORBENT GRANULES BAG

JCB Part number: 891/02059

Inert, non-flammable, for all workplace spillages



UJ GREASING TOOL

JCB Part number: 892/00913

For use in conjunction with 992/11300 Grease Gun, for those difficult to reach greasing applications



JUMBO SPRAY FOR 5 LITRE

JCB Part number: 990/97600

Simple, inexpensive spray kit for use with 5 litre can



GREASE GUN

JCB Part number: 992/11300

Designed to suit 12.5kg kegs and grease cartridges







BARREL TAP




JCB Part number: 990/00077

Fitted with locking lever

3/4 inch pipe thread

	1 litre	5 litres	20 litres	200 litres	IBC 1000 litres	Bulk 1000 litres (UK)
						
JCB Universal Agricultural Oil			4004/0305	4004/0302	4004/0345	4004/0315
JCB Optimum Performance Engine Oil 15W40		4001/2801	4001/2805	4001/2803	4001/2845	
JCB Engine Oil EP 15W40		4001/1801	4001/1805	4001/1803	4001/1845	4001/1815
JCB Engine Oil HP 15W40		4001/1501	4001/1505	4001/1503	4001/1545	4001/1515
JCB Engine Oil HP 20W50			4001/1905	4001/1903		
JCB Engine Oil HP 10W30		4001/1701	4001/1705	4001/1703	4001/1745	
JCB Engine Oil HP SAE30		4001/0302	4001/0305	4001/0301		
JCB Cold Climate Engine Oil EP 5W40		4001/2701	4001/2705	4001/2703	4001/2745	
JCB Optimum Performance Hydraulic Fluid 46		4002/2001	4002/2005	4002/2003	4002/2045	
JCB Hydraulic Fluid EP 46		4002/1601	4002/1605	4002/1603	4002/1645	4002/1615
JCB Hydraulic Fluid HP 46		4002/0801	4002/0805	4002/0803	4002/0845	4002/0815
JCB Hydraulic Fluid HP 32		4002/1001	4002/1025	4002/1024	4002/1045	4002/1015
JCB Biodegradable Hydraulic 46 Fluid			4002/2605	4002/2603	4002/2645	
JCB Hydraulic Fluid HP 15	4002/0501	4002/0503				
JCB Hydraulic Fluid 68			4002/0705	4002/0701		
JCB Optimum Performance Gear Oil		4000/3701	4000/3705	4000/3703	4000/3745	
JCB Gear Oil EP 85W140		4000/0601	4000/0605	4000/0603	4000/0645	4000/0615
JCB Gear Oil EP 80W90			4004/5105	4004/5103		
JCB Gear Oil HP			4000/0505	4000/0503		
JCB Gear Oil HP Plus		4000/2202	4000/2205	4000/2203	4000/2245	4000/2215
JCB Gear Oil HP 90		4000/0301	4000/0305	4000/0303	4000/0345	4000/0315
JCB Gear Oil LS Plus		4000/3901	4000/3905	4000/3903	4000/3945	
JCB HP Universal ATF		4000/2301	4000/2305	4000/2303		
JCB Transmission Fluid EP 10W		4000/2501	4000/2505	4000/2503	4000/2545	
JCB Transmission Fluid EP SAE 30		4000/2601	4000/2605	4000/2603	4000/2645	
JCB Torque Converter Fluid		4000/0202	4000/0205	4000/0203	4000/0245	
JCB Optimum Performance Transmission Fluid			4004/6305			
JCB Optimum Performance Clutch Fluid	4002/1904					

	400g	500g	12.5kg	50kg
				
Special MPL-EP Grease	4003/1501		4003/1506	4003/1510
Special HP Grease	4003/2017		4003/2006	4003/2005
Extreme Performance Moly Grease	4003/1327		4003/1326	
Special Slide Grease	4003/1115			
Special Hammer Grease	4003/1119			
Extreme Performance Hammer Grease	4003/2107		4003/2106	
JCB Autogrease		4003/2305		
Special Slew Pinion Grease	4003/1619			

	300ml aerosol	400ml aerosol	1 litre	5 litres	20 litres	200 litres
						
JCB Antifreeze HP/Coolant				4006/1101	4006/1120	4006/1103
JCB Readymix Antifreeze HP/Coolant				4006/1110	4006/1115	4006/1125
JCB Plantwash					4006/2120	993/99174
Waxoyl		4004/0501A		4004/0502		
JCB Screenclear			4006/0504			
JCB Hydraulic Anti-Stick Additive			4004/6704			
JCB High Performance Anti-Squawk Fluid			4004/3904			
Brake Fluid DOT 4			4002/0404			
JCB Liquid Maintenance		993/9916				
JCB Chain Lubricant	4004/0237A					

The best back-up in the business

Whether we're providing you with support,
parts or finance, we aim for 100% satisfaction.

It's all part of our promise to put you,
the customer, first

Wherever you are, we are. Our mission to provide world-class support and deliver 100% satisfaction reaches into more than 1,500 dealer depots, spanning 150 countries across five continents. The aim? To bring you global expertise at a local level. We truly believe no other manufacturer does more to understand the subtle differences between one region of the world and another. It's a degree of attention that we maintain at every level of the company and an assurance to our customers that wherever they are in the world, JCB will fulfil their needs.

Trust the genuine article. At the heart of the support network is our impressive World Parts Centre, a state-of-the-art facility operating 24/7 to dispatch more than a million genuine parts and attachments every week to our dealers and international distribution centres. Because we understand the need to minimise downtime, we utilise the latest logistics and warehouse management systems and have committed to an 'Anywhere in 24 hours' strategy.

Keeping you up and running. Just as important as genuine JCB parts are the people who fit and maintain them. Our JCB-trained technicians in all of those 1,500-plus dealer depots provide excellent, expert customer care, whether it's routine servicing or something more urgent. If there is an emergency breakdown situation, we need to act fast. This is why all our dealers operate their own fleets of support vehicles, enabling parts to be delivered quickly and fitted expertly, and fulfilling our promise to keep our customers working.

Advanced technology. At JCB, we are constantly looking at new, innovative ways to help you get the most out of your machine. Our latest development is JCB LiveLink, an advanced telematics system using satellite and cellular technology that enables you to better protect your machine and accurately monitor and improve its performance. Using JCB LiveLink

can benefit your business in many ways, from increasing the security of your machines to improving fleet utilisation. It can also enable your JCB dealer to view your machine and guarantee timely servicing of your fleet, improving uptime.

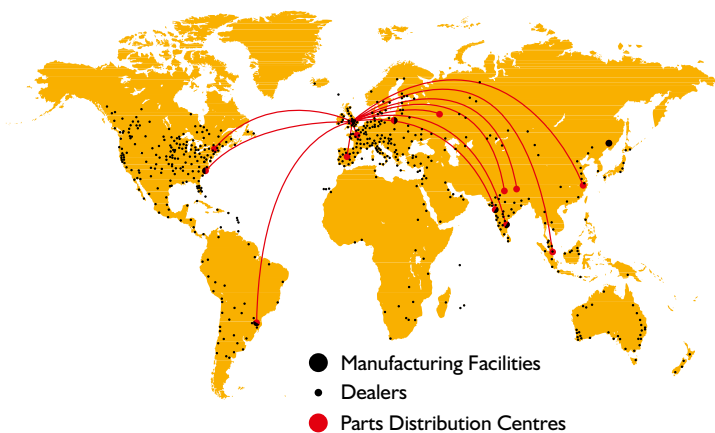


Maximising earning potential. We grow as our customers grow. That's why, at JCB, we are committed to offering expert financial advice and support to help customers maximise their earning potential.

Finance options* are available for new and used machinery, all part of our dedication to helping customers preserve their working capital while spreading costs in the most effective and tax-efficient way.

And as well as financial help, we are also happy to offer JCB Insurance.* We specialise in construction and industrial insurance and in offering Insurance Premium Finance facilities.

** Please check individual countries for available services.*





JCB Service, Beamhurst Road, Uttoxeter, Staffordshire ST14 5PA. Tel: 01889 590312. Fax: 01889 593624.

www.jcb.com

©2009 JCB Service. All rights reserved. No part of this publication may be reproduced, stored in a retrieval system, or transmitted in any form or by any other means, electronic, mechanical, photocopying or otherwise, without prior permission from JCB Service.
JCB reserves the right to change specifications without notice. Illustrations and specifications shown may include optional equipment and accessories. The JCB logo is a registered trademark of J.C. Bamford Excavators Ltd.

MKTG/5000 5/09 Issue 2