

# JVC

## SERVICE MANUAL

### VIDEO CASSETTE RECORDER

# HR-J3007UM/J4007UM/J6007UM



**VHS**  
**SQPB**

Regarding service information other than these sections, refer to the HR-VP48U, HR-VP58U service manual (No. 82781). Also, be sure to note important safety precautions provided in the service manual.

#### SPECIFICATIONS *(The specifications shown pertain specifically to the model HR-J6007UM/J4007UM)*

##### GENERAL

Power requirement	: AC 110 V – 220 V $\sim$ , 50 Hz/60 Hz
Power consumption	
Power on	: <b>HR-J6007UM</b> 19 W <b>HR-J4007UM</b> 17 W
Power off	: 2.5 W
Temperature	
Operating	: 5°C to 40°C (41°F to 104°F)
Storage	: -20°C to 60°C (-4°F to 140°F)
Operating position	: Horizontal only
Dimensions (W x H x D)	: 360 mm x 94 mm x 278 mm (14- <sup>3</sup> / <sub>16</sub> " x 3- <sup>3</sup> / <sub>4</sub> " x 10- <sup>15</sup> / <sub>16</sub> " )
Weight	: 3.2 kg (7.1 lbs)
Format	: VHS NTSC standard
Maximum recording time	
SP	: 210 min. with ST-210 video cassette
EP	: 630 min. with ST-210 video cassette

##### VIDEO/AUDIO

Signal system	: NTSC-type color signal and EIA monochrome signal, 525 lines/60 fields
Recording/ Playback system	: DA-4 (Double Azimuth) head helical scan system
Signal-to-noise ratio	: 45 dB
Horizontal resolution	: 240 lines
Frequency range	
Normal audio	: 70 Hz to 10,000 Hz
Hi-Fi audio (HR-J6007UM only)	: 20 Hz to 20,000 Hz
Input/Output	: RCA connectors (IN x 1, OUT x 1)

##### TUNER

Tuning system	: Frequency-synthesized tuner
Channel coverage	
VHF	: Channels 2–13
UHF	: Channels 14–69
CATV	: 113 Channels
RF output	: Channel 3 or 4 (switchable; preset to Channel 3 when shipped) 75 $\Omega$ , unbalanced

##### TIMER

Clock reference	: Quartz
Program capacity	: 1-year programmable timer/8 programs
Memory backup time	: Approx. 6 months Estimated figure based on supplied fresh battery; actual performance may differ.

##### ACCESSORIES

Supplied accessories	: RF cable, Infrared remote control unit, Lithium battery CR2025, Conversion plug, "AA" battery x 2
----------------------	---

*Specifications shown are for SP mode unless otherwise specified.  
E. & O.E. Design and specifications subject to change without notice.*

# TABLE OF CONTENTS

DIFFERENT TABLE ..... 1 to 4

## 5. PARTS LIST (5-1 to 5-3)

5.1 PACKING AND ACCESSORY ASSEMBLY <M1> ..... 5-1

5.2 CABINET AND CHASSIS ASSEMBLY <M2> ..... 5-2

### [HR-J3007UM/J4007UM]

The following table indicate main different points between models HR-VP48U, HR-J3007UM and HR-J4007UM.

ITEM	MODEL	HR-VP48U	HR-J3007UM	HR-J4007UM
JOG/SHUTTLE DIAL ON DECK		NOT USED	←	USED
POWER VOLTAGE(RATING)		120V,60Hz	←	110-220V,50/60Hz
POWER PLUG		UL,CSA	←	SASO
POWER SAVE		USED	NOT USED	←
FRONT PANEL COLOR		DARK GRAY	LIGHT SILVER	←
AUTO PICTURE		AUTO PICTURE	←	A.V. CALIBRATION
BACKUP TIME		3MIN	←	6Month(Li Batt)
VCR PLUS+		USED	NOT USED	←
AUTO CLOCK		USED	←	NOT USED
JUST CLOCK		USED	←	NOT USED
HEAD CLEANER		NOT USED	←	USED

The following table indicate different parts number between models HR-VP48U, HR-J3007UM and HR-J4007UM.

### PACKING AND ACCESSORY ASSEMBLY <M1>

REF. NO.	ITEM	MODEL	HR-VP48U	HR-J3007UM	HR-J4007UM
301	PACKING CASE		LP30670-001A	LP30670-009A	LP30670-010B
306	REMOTE CONTROLLER		LP20878-001A	LP20878-002A	←
306A	COVER(BATTERY)		LP40610-001A	LP40610-002A	←
309	LT. BATTERY		—	—	PECA0903
310	INST.BOOK(EN.SP)		LPT0340-001B	LPT0371-001A	LPT0372-001A
312	RF CABLE		PEAC0294-04	PEAC0446-120	←
313	CONVERSION PLUG		—	—	PEMC1012
317	REGIST.CARD		BT-51020-2	—	—
318	Q.S.SHEET		LPT0340-002A	—	—
320	CONNECTION SHEET		—	PU36560-2	←

### CABINET AND CHASSIS ASSEMBLY <M2>

REF. NO.	ITEM	MODEL	HR-VP48U	HR-J3007UM	HR-J4007UM
501	FRONT PANEL ASSY		LP10293-001D	LP10293-005D	LP10293-006D
501A	CASSETTE DOOR		LP20868-003A	LP20868-006A	LP20868-006A
501C	DISPLAY WINDOW		LP20869-013A	LP20869-025A	LP20869-026A
502	TOP COVER		PQ11898-26-18	PQ11898-38-18	PQ11898-38-18
511	BOTTOM CHASSIS		LP20262-009A	LP20262-002H	LP20262-003H
517	POWER CORD		QMPD190-170-K	←	QMP73J0-170
518	CLEANER ASSY		—	—	LP40369-001D
518A	CLEANER ROLLER		—	—	PQ46418-1-2
518B	CLEANER		—	—	PQ46419-1-2
518C	CLEANER ARM		—	—	LP30407-001D
520	CAP,LT. BATTERY		—	—	LP30336-001A

Notes : Mark — is not used.

Mark ← is same as left.

**MAIN BOARD ASSEMBLY <03>**

△ REF. NO.	ITEM	MODEL	HR-VP48U	HR-J3007UM	HR-J4007UM
PW1	MAIN BOARD ASSY		LPA10088-03C1	←	LPA10088-11B1
IC3004	IC		M24C04-BN6	←	M24C02-BN6
Q5101	POWER MOS FET		2SK3048-LT	←	2SK2632-CB14
D3008	SB DIODE		—	—	RB721Q-40
D5105	SI DIODE		—	—	1SS133
R3235	RESISTOR		—	—	QRE141J-102Y
△ R5001	RESISTOR		QRZ9046-475Z	←	—
R5108	MG RESISTOR		NRSA02J-152X	←	NRSA02J-222X
R5111	MG RESISTOR		—	—	NRSA02J-821X
R5112	MG RESISTOR		—	—	NRSA02J-221X
R5306	MG RESISTOR		NRSA02J-823X	←	NRSA02J-563X
C3018	TRIM CAPACITOR		—	—	QAT3725-300Z
C3019	CAPACITOR		NDC21HJ-180X	←	NDC21HJ-100X
C3055	E CAPACITOR		QEKJ0JM-337	←	—
△ C5004	CAPACITOR		QCZ9094-472	←	QCZ9071-222
C5006	E CAPACITOR		QETM2DM-826	←	QEZ0374-826
C5106	CAPACITOR		—	—	QCBB1HJ-271Y
C5210	CAPACITOR		—	—	—
C5304	M CAPACITOR		QFLC1HJ-823Z	←	QFLC1HJ-563Z
C5310	M CAPACITOR		QFLC1HJ-393Z	←	—
△ TB1	TERMINAL BOARD		PQ21977-2-3	←	LP20383-001B
FW7106	PARA RIBON WIRE		—	—	QUM022-30A4A4
△ T5001	SW TRANSFORMER		QQS0031-002	←	QQS0030-002
△ SG5001	SURGE ABSORBER		QAF0046-242Z	←	—
△ VA5001	VARISTOR		QAF0023-431Z	←	—
△ VA5002	VARISTOR		QAF0023-431Z	←	—
△ VA5003	VARISTOR		—	—	QAF0026-621
△ PC5101	IC(PHOTO COUPLER)		PS2501-1	←	PS2561L1-1/WL/
△ F5001	FUSE		QMF51N2-1R25J1	←	QMF51E2-2R0

**LT. BATTERY BOARD ASSEMBLY <93>**

△ REF. NO.	ITEM	MODEL	HR-VP48U	HR-J3007UM	HR-J4007UM
PW4	LT. BATTERY BOARD ASSY		—	—	LPA10088-01A4
BT3001	BATTERY HOLDER		—	—	QNZ0032-001

Notes : Mark — is not used.  
 Mark ← is same as left.

[HR-J6007UM]

The following table indicate main different points between models HR-VP58U and HR-J6007UM.

ITEM	MODEL	HR-VP58U	HR-J6007UM
JOG/SHUTTLE DIAL ON DECK		NOT USED	USED
POWER VOLTAGE(RATING)		120V,60Hz	110-220V,50/60Hz
POWER PLUG		UL,CSA	SASO
POWER SAVE		USED	NOT USED
FRONT PANEL COLOR		DARK GRAY	LIGHT SILVER
HEAD CLEANER		NOT USED	USED
AUTO PICTURE		AUTO PICTURE	A.V. CALIBRATION
BACKUP TIME		3MIN	6Month(Li Batt)
VCR PLUS+		USED	NOT USED
AUTO CLOCK		USED	NOT USED
JUST CLOCK		USED	NOT USED
REMOTE CONTROLLER		C.BOX/DBS/TV MBR	NON MBR(*)

(\*) The RCU of the HR-J6007U is different from that of the HR-VP58U but it is the same as that of the HR-VP48U.  
For the circuit diagrams, please refer to the HR-VP48U RCU.

The following table indicate different parts number between models HR-VP58U and HR-J6007UM.

PACKING AND ACCESSORY ASSEMBLY <M1>

REF. NO.	ITEM	MODEL	HR-VP58U	HR-J6007UM
301	PACKING CASE		LP30670-003A	LP30670-011B
306	REMOTE CONTROLLER		LP20303-014A	LP20878-002A
306A	COVER(BATTERY)		LP40225-002A	LP40610-002A
309	LT. BATTERY		—	PECA0903
310	INST.BOOK(EN.SP)		LPT0341-001B	LPT0372-001A
312	RF CABLE		PEAC0294-04	PEAC0446-120
313	CONVERSION PLUG		—	PEMC1012
317	REGIST.CARD		BT-51020-2	—
318	Q.S.SHEET		LPT0341-002A	—
320	CONNECTION SHEET		—	PU36560-2

CABINET AND CHASSIS ASSEMBLY <M2>

REF. NO.	ITEM	MODEL	HR-VP58U	HR-J6007UM
501	FRONT PANEL ASSY		LP10293-002D	LP10293-007D
501A	CASSETTE DOOR		LP20868-003A	LP20868-007A
501C	DISPLAY WINDOW		LP20869-014A	LP20869-027A
502	TOP COVER		PQ11898-26-18	PQ11898-38-18
511	BOTTOM CHASSIS		LP20262-009B	LP20262-003H
517	POWER CORD		QMPD190-170-K	QMP73J0-170
518	CLEANER ASSY		—	LP40369-001D
518A	CLEANER ROLLER		—	PQ46418-1-2
518B	CLEANER		—	PQ46419-1-2
518C	CLEANER ARM		—	LP30407-001D
520	CAP,LT. BATTERY		—	LP30336-001A

Notes : Mark — is not used.

**MAIN BOARD ASSEMBLY <03>**

△ REF. NO.	ITEM	MODEL	HR-VP58U	HR-J6007UM
PW1	MAIN BOARD ASSY		LPA10088-05C1	LPA10088-10C1
IC3004	IC		M24C04-BN6	M24C02-BN6
Q5101	POWER MOS FET		2SK3048-LT	2SK2632-CB14
Q6501	DIGI TRANSISTOR		DTC143TU	—
Q6502	DIGI TRANSISTOR		DTC143TU	—
D3008	SB DIODE		—	RB721Q-40
D5105	SI DIODE		—	1SS133
R3082	MG RESISTOR		NRSA02J-102X	—
R3235	RESISTOR		—	QRE141J-102Y
△ R5001	RESISTOR		QRZ9046-475Z	—
R5108	MG RESISTOR		NRSA02J-152X	NRSA02J-222X
R5111	MG RESISTOR		—	NRSA02J-821X
R5112	MG RESISTOR		—	NRSA02J-221X
R5306	MG RESISTOR		NRSA02J-823X	NRSA02J-563X
C3018	TRIM CAPACITOR		—	QAT3725-300Z
C3019	CAPACITOR		NDC21HJ-180X	NDC21HJ-100X
C3055	E CAPACITOR		QEKJ0JM-337	—
△ C5004	CAPACITOR		QCZ9094-472	QCZ9071-222
C5006	E CAPACITOR		QETM2DM-826	QEZ0374-826
C5106	CAPACITOR		—	QCB1HJ-271Y
C5304	M CAPACITOR		QFLC1HJ-823Z	QFLC1HJ-563Z
C5310	M CAPACITOR		QFLC1HJ-393Z	—
△ TB1	TERMINAL BOARD		PQ21910-3-5	LP20316-003B
J7101	PIN JACK		QNN0287-001	QNN0288-001
FW7106	PARA RIBON WIRE		—	QUM022-30A4A4
△ T5001	SW TRANSFORMER		QQS0031-002	QQS0030-002
△ SG5001	SURGE ABSORBER		QAF0046-242Z	—
△ VA5001	VARISTOR		QAF0023-431Z	—
△ VA5002	VARISTOR		QAF0023-431Z	—
△ VA5003	VARISTOR		—	QAF0026-621
△ PC5101	IC(PHOTO COUPLER)		PS2501-1	PS2561L1-1/WL/
△ F5001	FUSE		QMF51N2-1R25J1	QMF51E2-2R0

**LT. BATTERY BOARD ASSEMBLY <93>**

△ REF. NO.	ITEM	MODEL	HR-VP58U	HR-J6007UM
PW4	LT. BATTERY BOARD ASSY		—	LPA10088-01A4
BT3001	BATTERY HOLDER		—	QNZ0032-001

Notes : Mark — is not used.

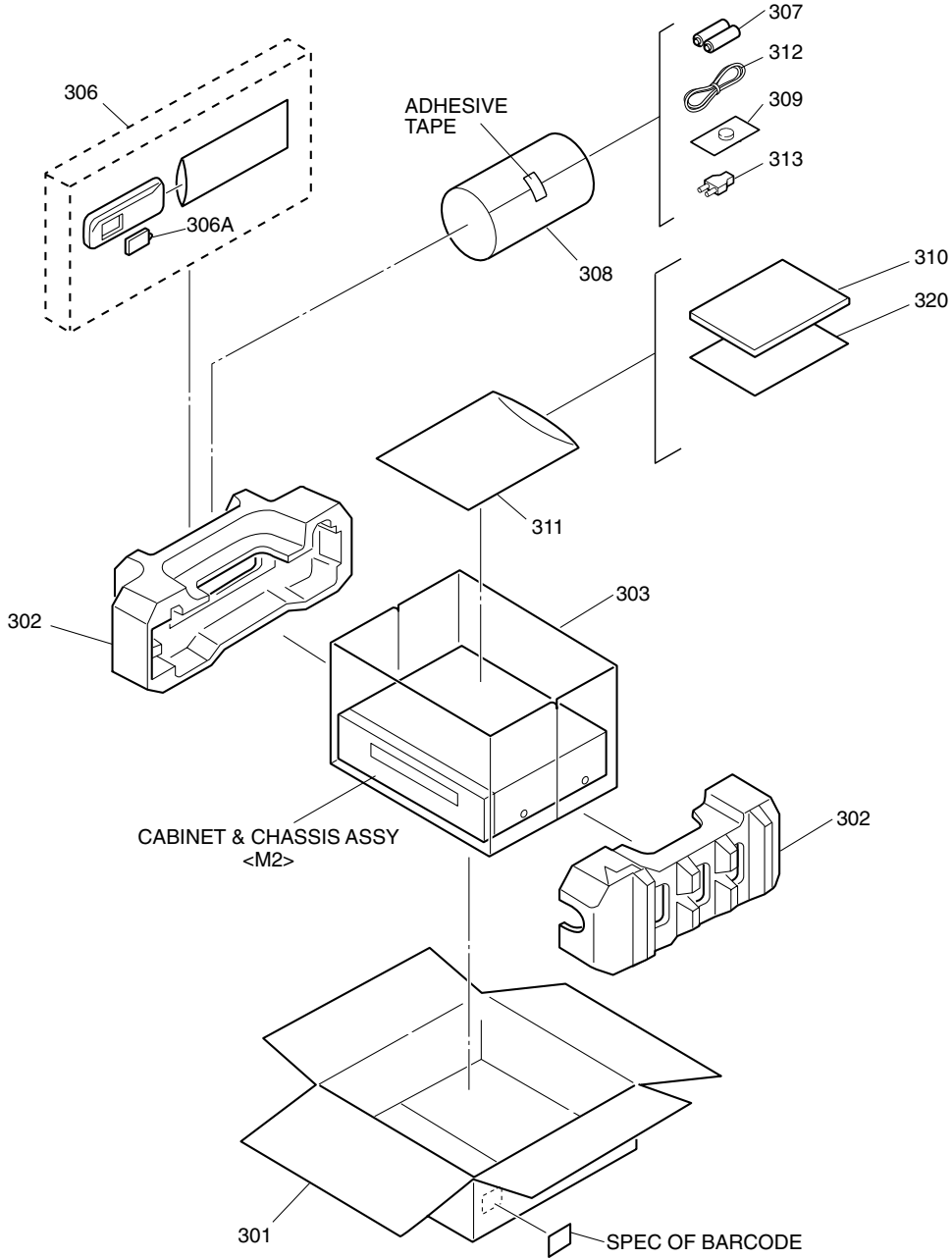
# SECTION 5 PARTS LIST

## SAFETY PRECAUTION

Parts identified by the symbol are critical for safety. Replace only with specified part numbers.

### 5.1 PACKING AND ACCESSORY ASSEMBLY <M1>

The instruction manual to be provided with this product will differ according to the destination.



# REF No. PART No. PART NAME, DESCRIPTION  
 \*\*\*\*\*

#### PACKING AND ACCESSORY ASSEMBLY <M1>

301	LP30670-009A	PACKING CASE,J3007UM
	LP30670-010B	PACKING CASE,J4007UM
	LP30670-011B	PACKING CASE,J6007UM
302	LP30671-001C	CUSHION ASSY
303	PQM30021-92	POLY BAG
306	LP20878-002A	REMOTE CONTROLLER

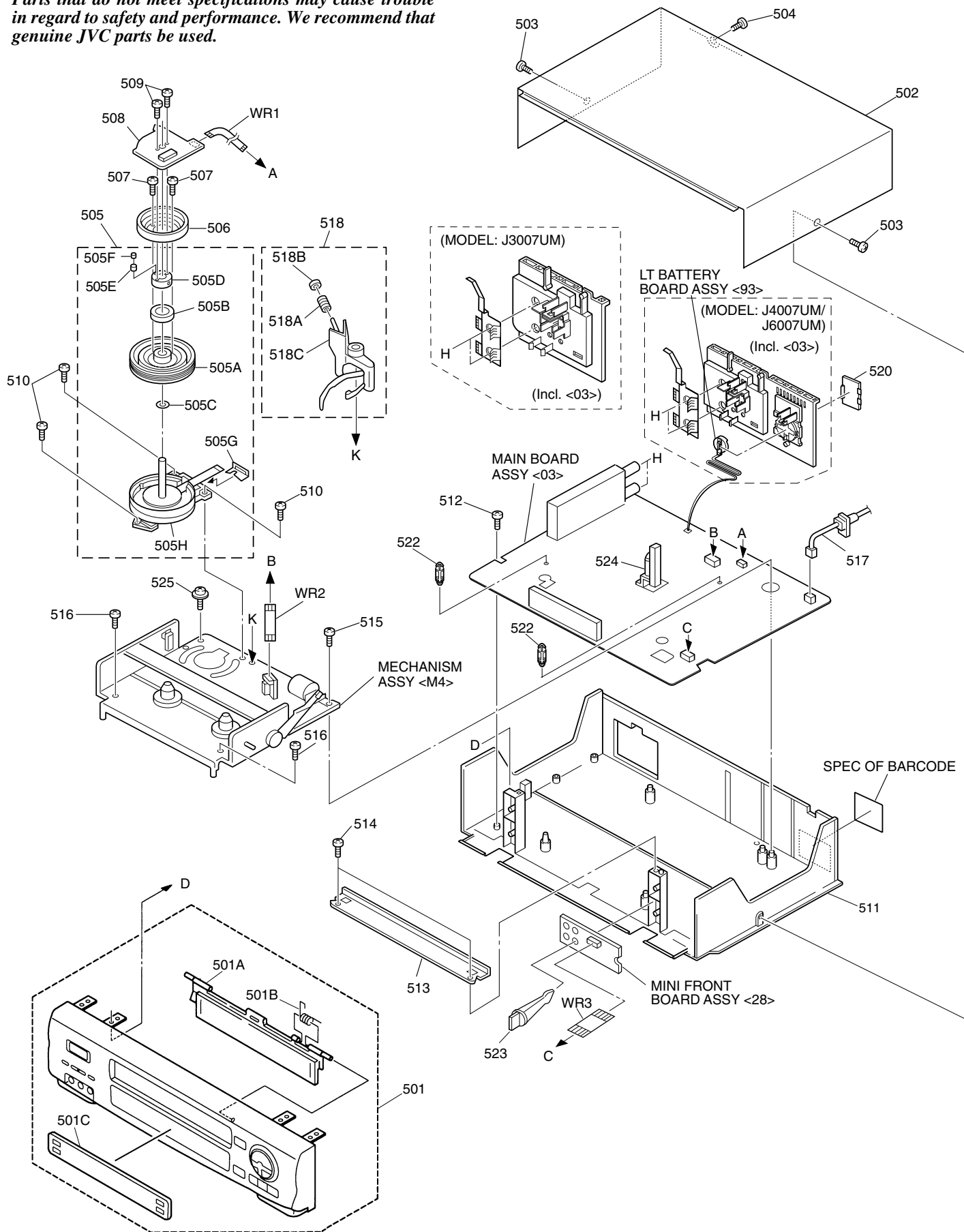
# REF No. PART No. PART NAME, DESCRIPTION

	306A	LP40610-002A	COVER(BATTERY)	
	307	-	BATTERY,X2 ("AA"TYPE)	
	308	QPC02202230P	POLY BAG	
		309	PECA0903	LT.BATTERY,J4007UM,J6007UM
		310	LPT0371-001A	INST.BOOK(EN.SP),J3007UM
			LPT0372-001A	INST.BOOK(EN.SP),J4007UM/J6007UM
		311	QPC02503530P	POLY BAG
		312	PEAC0446-120	RF CABLE
		313	PEMC1012	CONVERSION PLUG,J4007UM/J6007UM
		320	PU36560-2	CONNECTION SHEET

5.2 CABINET AND CHASSIS ASSEMBLY <M2>

**BEWARE OF BOGUS PARTS**

Parts that do not meet specifications may cause trouble in regard to safety and performance. We recommend that genuine JVC parts be used.



#  $\Delta$  REF No. PART No. PART NAME, DESCRIPTION  
 \*\*\*\*\*

**CABINET AND CHASSIS ASSEMBLY <M2>**

$\Delta$ 501	LP10293-005D	FRONT PANEL ASSY,J3007UM
$\Delta$	LP10293-006D	FRONT PANEL ASSY,J4007UM
$\Delta$	LP10293-007D	FRONT PANEL ASSY,J6007UM
501A	LP20868-006A	CASSETTE DOOR,J3007UM/J4007UM
	LP20868-007A	CASSETTE DOOR,J6007UM
501B	PQ46448	TORSION SPRING
501C	LP20869-025A	DISPLAY WINDOW,J3007UM
	LP20869-026A	DISPLAY WINDOW,J4007UM
	LP20869-027A	DISPLAY WINDOW,J6007UM
$\Delta$ 502	PQ11898-38-18	TOP COVER
503	QYTDSF3010M	SCREW,X2 TOP COVER(SIDE)
504	QYTDSF3010M	SCREW,TOP COVER(REAR)
505	LP20617-001A	DRUM SUB ASSY,J6007UM
	LP20617-003A	DRUM SUB ASSY,J3007UM/J4007UM
505A	LP20616-001A	UPPER DRUM ASSY,J6007UM
	LP20084-002A	UPPER DRUM ASSY,J3007UM/J4007UM
505B	PDM4439	CAP
505C	PDM4444-19-2	WASHER
505D	LP40572-001A	COLLAR ASSY
505E	LP40323-001A	CONTACT
505F	LP30004-014A	COMPRESSION SPRING
505G	LP40174-001B	FPC PLATE
505H	LP20615-001A	LOWER DRUM ASSY,J6007UM
	LP20615-003A	LOWER DRUM ASSY,J3007UM/J4007UM
506	PDZ0179-1-4	ROTOR ASSY
507	QYSPSP3006Z	SCREW,X2
$\Delta$ 508	QAR0119-001	STATOR ASSY
509	QYSPSPH2606Z	SCREW,X2
510	QYTDST2610Z	SCREW,X3 DRUM
$\Delta$ 511	LP20262-002H	BOTTOM CHASSIS,J3007UM
$\Delta$	LP20262-003H	BOTTOM CHASSIS,J4007UM/J6007UM
512	QYTDSF3010Z	SCREW,MAIN
513	LP30312-001B	BRACKET(CHASSIS)
514	QYTDSF3010Z	SCREW,X2
515	QYTDSF4012Z	SCREW,MECHA
516	QYTDSF3010Z	SCREW,X2 MECHA
$\Delta$ 517	QMPD190-170-K	POWER CORD,J3007UM
$\Delta$	QMP73J0-170	POWER CORD,J4007UM/J6007UM
518	LP40369-001D	CLEANER ASSY
518A	PQ46418-1-2	CLEANER ROLLER
518B	PQ46419-1-2	CLEANER
518C	LP30407-001D	CLEANER ARM
520	LP30336-001A	CAP,LT.BATTERY,J4007UM/J6007UM
522	LP40226-001A	PC SUPPORT,X2
523	LP40628-001A	PC SUPPORT,FRONT
524	LP40253-001B	STOPPER
525	PQ40413	SPECIAL SCREW,MECHA
WR1	QUQ212-0518CG	FFC WIRE,DRUM CN3002
WR2	WJT0005-002A	E-CARD WIRE,A/C HEAD CN2001
WR3	QUQ112-0914CG	FFC WIRE,FRONT CN7001





**JVC**

VICTOR COMPANY OF JAPAN, LIMITED  
VIDEO DIVISION

S40894