

ProLine

TOOL & SUPPLY, LLC

LK4035

SEMI HOOD DOLLY

Assembly Guide



www.prolinetoolsupply.com

(989) 315-8946

Table of Contents

SEMI HOOD DOLLY	3
SPECIFICATIONS	3
PARTS & HARDWARE	4
ASSEMBLY GUIDE	5
OPERATION	11

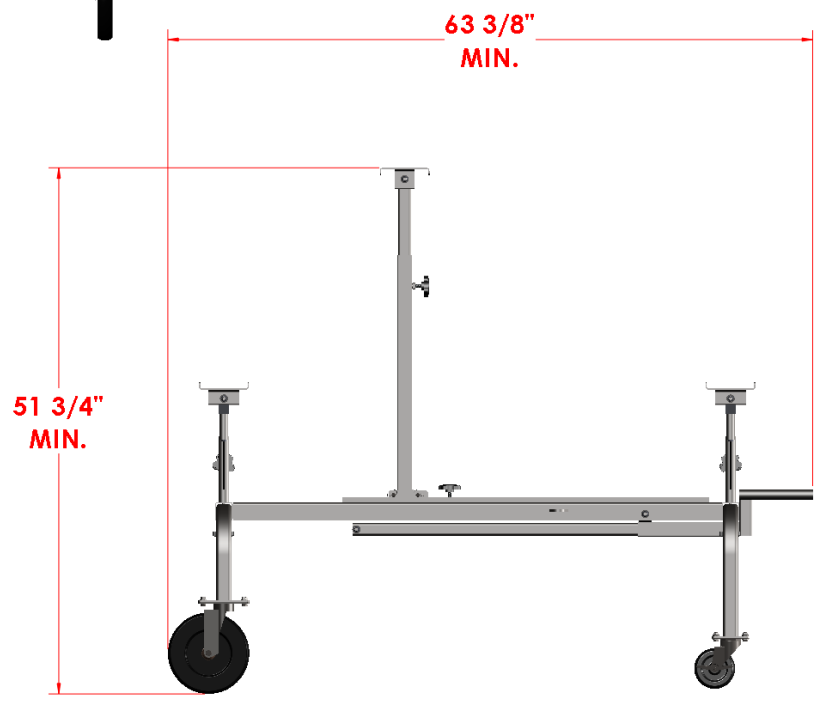
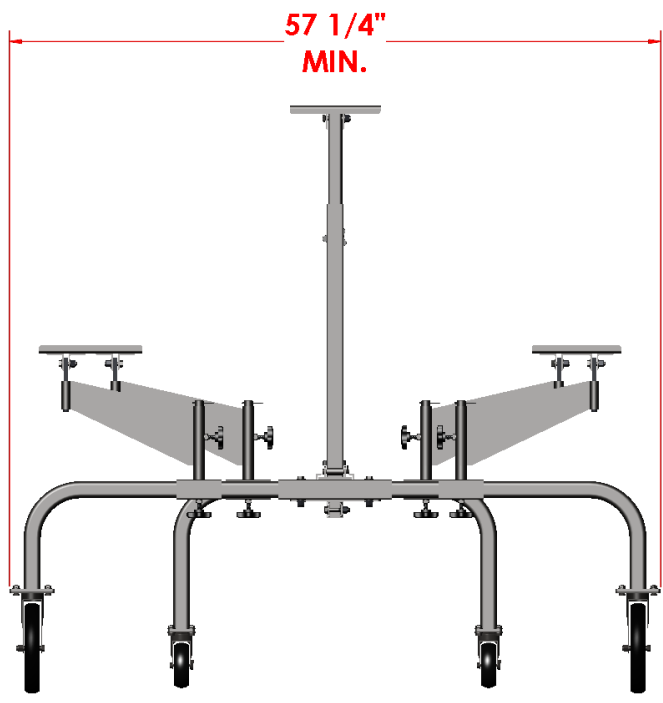
If you have any questions or comments, please call 1 (989) 315-8946.

Proline Tool & Supply, LLC
210 Pigeon Rd Bad Axe MI 48413 US
(989) 315-8946

Semi Hood Dolly

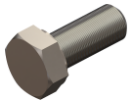
The LK4035 Semi Hood Dolly is designed to allow the operator to easily maneuver a semi hood through the work area. It is completely adjustable and will accommodate most semi hood designs. With the removal of a pin, the LK4035 Semi Hood Dolly also serves as a pickup box dolly. Storing a semi hood on the LK4035 Semi Hood Dolly enables the operator to use the LK4000 Motor City Lift King, and any of its attachments, for the next job.

Specifications



Parts

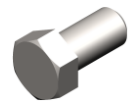
PartNo	Description	QTY.
*	5/16-18 x 3/4 HEX BOLT	16
*	5/16-18 HEX FLANGE NUT	16
*	3/8-16 X 1 HEX BOLT	2
*	3/8-16 X 1 1/4 HEX BOLT	4
*	3/8-16 x 2 1/4 HEX BOLT	1
*	3/8-16 X 2 1/2 HEX BOLT	5
*	3/8-16 NYLON INSERT HEX NUT	12
*	3/8 x 2 1/2 CLEVIS PIN	1
*	3/8 X 2 1/2 CLEVIS PIN with CLIP	1
*	COTTER PIN 1/8 x 1 1/8	1
*	1/8 WIRE x 2 1/2 HAIR PIN CLIP	4
*	FELT PAD, 4 3/4 X 5 11/16	4
*	FELT PAD, 6 3/16 X 8	1
LK-H006	3/8-16 STAR KNOB	10
LK-H018	CASTER, LOCKING	2
LK-H020	8" CASTER	2
LK4035-01	WELD, BASE, SEMI HOOD DOLLY	1
LK4035-02	WELD, POST, PIVOT ARM	4
LK4035-03	WELD, BRACKET, HORIZ. SLIDE	1
LK4035-04	WELD, LEG, LONG	2
LK4035-05	WELD, LEG, SHORT	2
LK4035-06	WELD, HORIZ. SLIDE	1
LK4035-07	WELD, BASE PLATE, UPRIGHT	1
LK4035-08	WELD, TUBE, UPRIGHT	1
LK4035-09	TUBE, UPRIGHT	1
LK4035-10	WELD, PAD, SWIVEL, UPRIGHT	1
LK4035-11	WELD, PAD, SWIVEL ARM	4
LK4035-12	WELD, POST, PAD	4
LK4035-13	WELD, SWIVEL ARM	4
LK4035-14	SPACER, 1.05 O.D. x .82 I.D. x .25	4



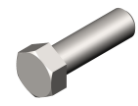
5/16-18 x 3/4
hex bolt



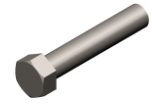
5/16-18
hex flange nut



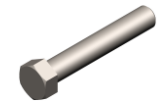
3/8-16 x 1
hex bolt



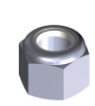
3/8-16 x 1 1/4
hex bolt



3/8-16 x 2 1/4
hex bolt



3/8-16 x 2 1/2
hex bolt



3/8-16
nylon insert
hex nut



3/8 x 2 1/2
clevis pin



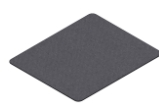
3/8 x 2 1/2
clevis pin
with clip



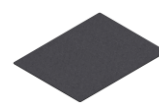
Cotter pin
1/8 x 1 1/8



1/8 wire x 2 1/2
Hair pin clip



Felt pad
4 1/4 x 5 11/16



Felt pad
6 3/16 x 8



LK-H006
3/8-16
Star knob



LK-H018
Caster, locking



LK-H020
8" caster

Parts cont.



LK-4035-01



LK-4035-02



LK-4035-03



LK-4035-04



LK-4035-05



LK-4035-06



LK-4035-07



LK-4035-08



LK-4035-09



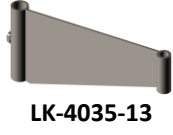
LK-4035-10



LK-4035-11



LK-4035-12



LK-4035-13

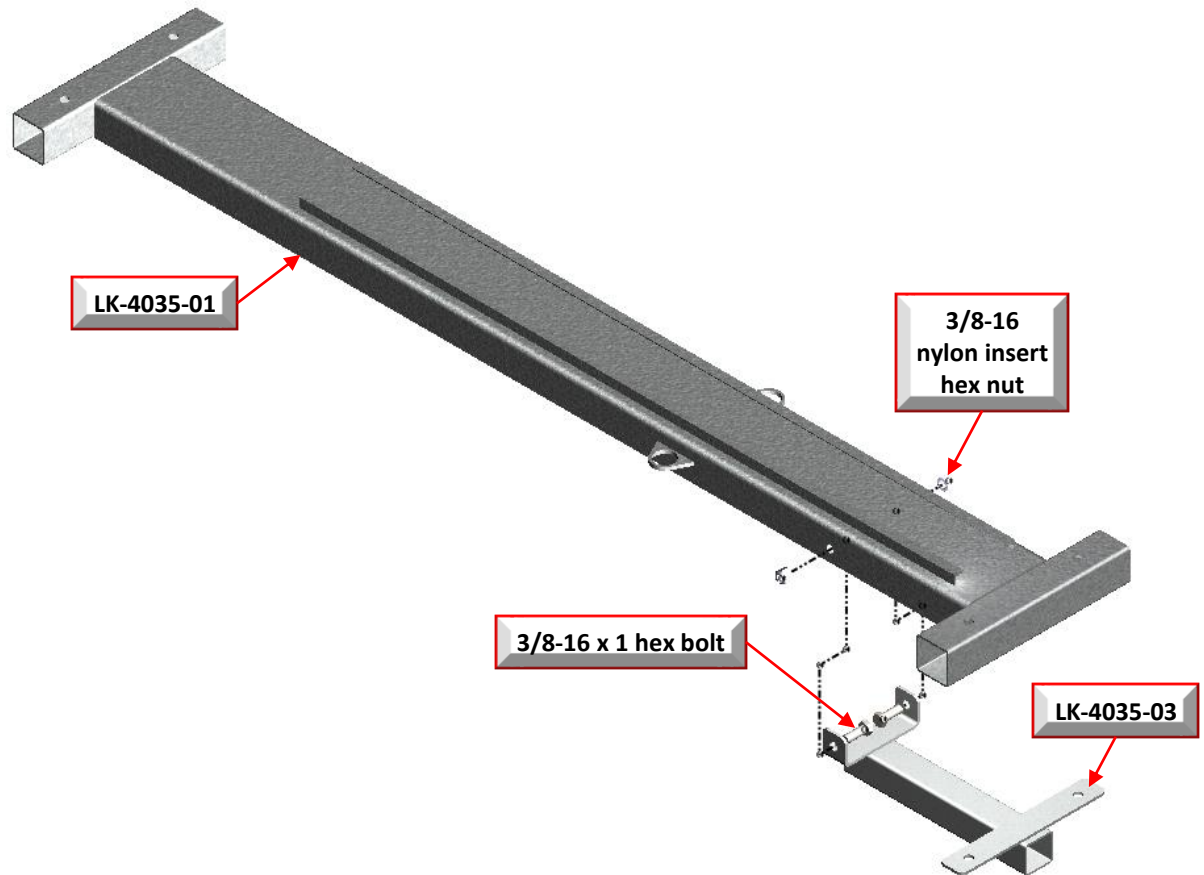


LK-4035-14

Assembly

STEP 1

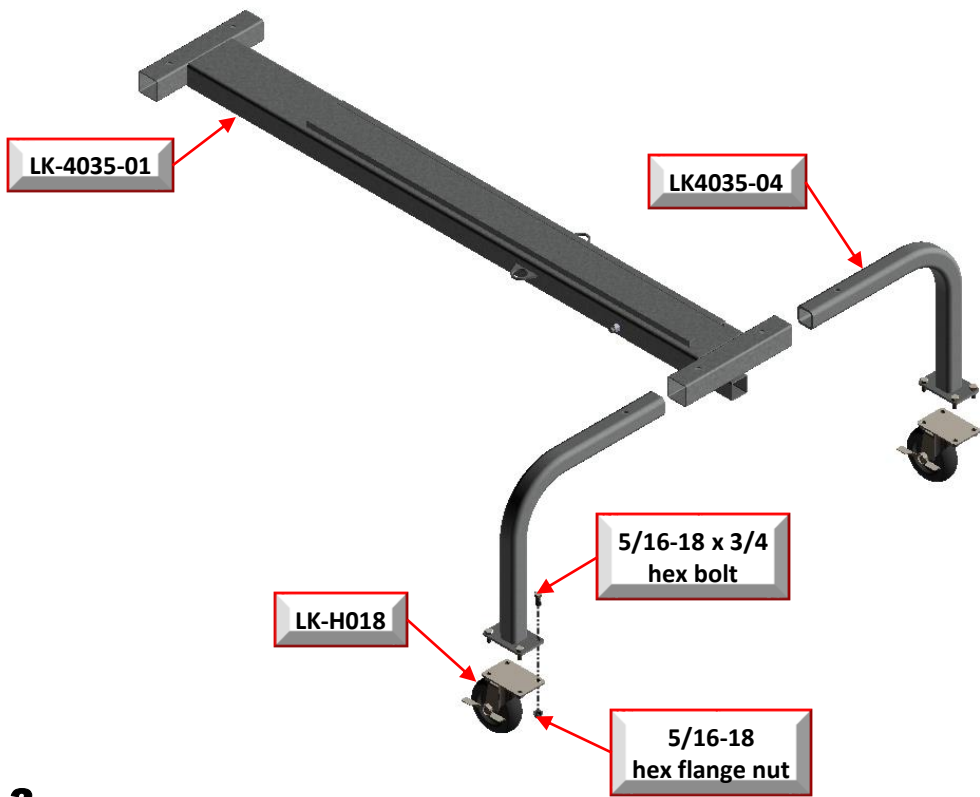
Attach the LK4035-03 Horizontal Slide Bracket to the LK4035-01 Semi Hood Dolly Base using (2) 3/8-16 x 1 hex bolts and (2) 3/8-16 nylon insert hex nuts..



Assembly

STEP 2

Attach the (2) LK-H018 Caster with Brake to the (2) LK4035-04 Long Legs, using (8) 5/16-18 x 3/4 hex bolts and (8) 5/16-18 hex flange nuts.



STEP 3

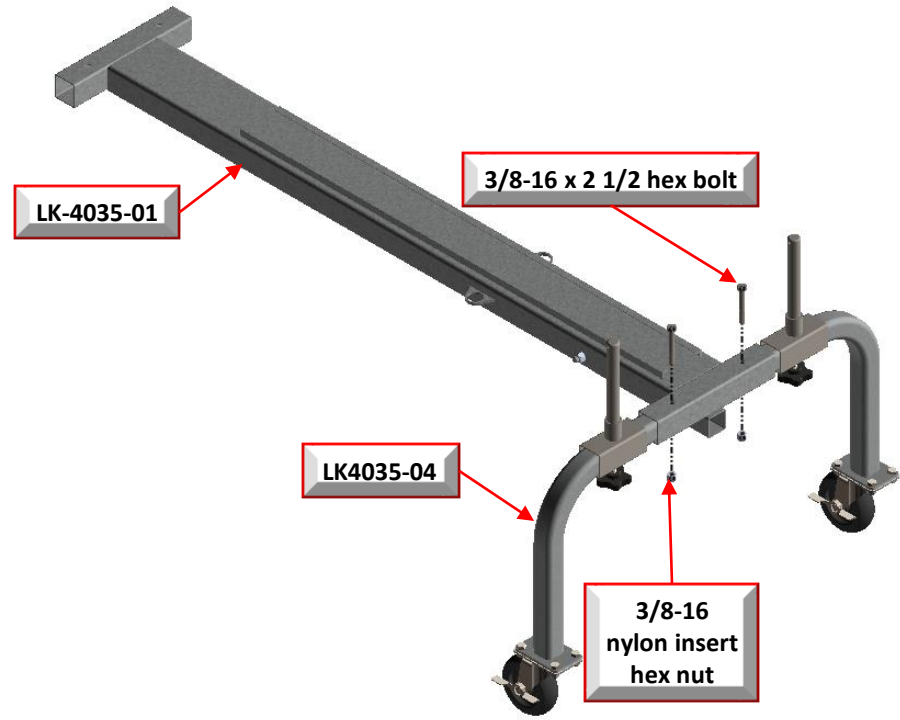
Slide (2) of the LK4035-02 Pivot Arm Posts over the (2) LK4035-04 Long Legs. Slide the (2) LK4035-02 Pivot Arm Posts into the LK4035-01 Semi Hood Dolly Base. Thread (2) LK-H006 3/8-16 Star Knobs into the LK4035-04 Pivot Arms, as shown below.



Assembly

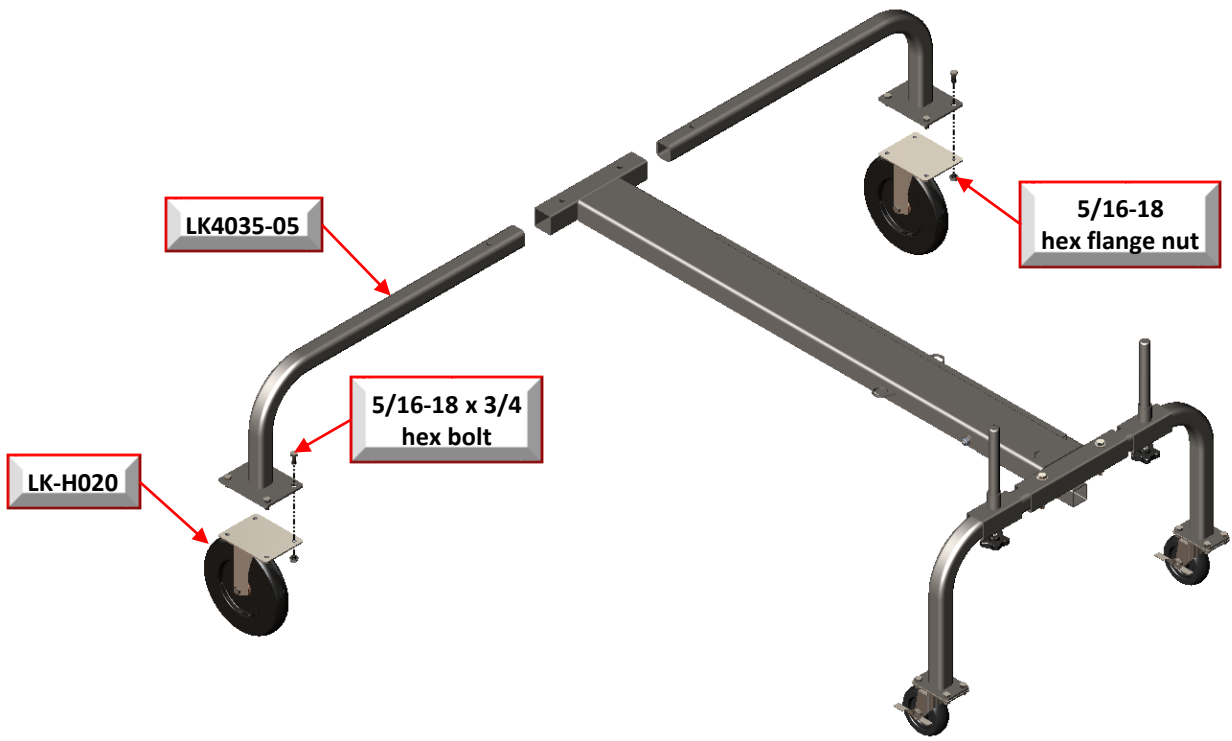
STEP 4

Attach the (2) LK-4035-04 Long Legs to the LK4035-01 Semi Hood Dolly Base, using (2) 3/8-16 x 2 1/2 hex bolts and (2) 3/8-16 nylon insert hex nuts.



STEP 5

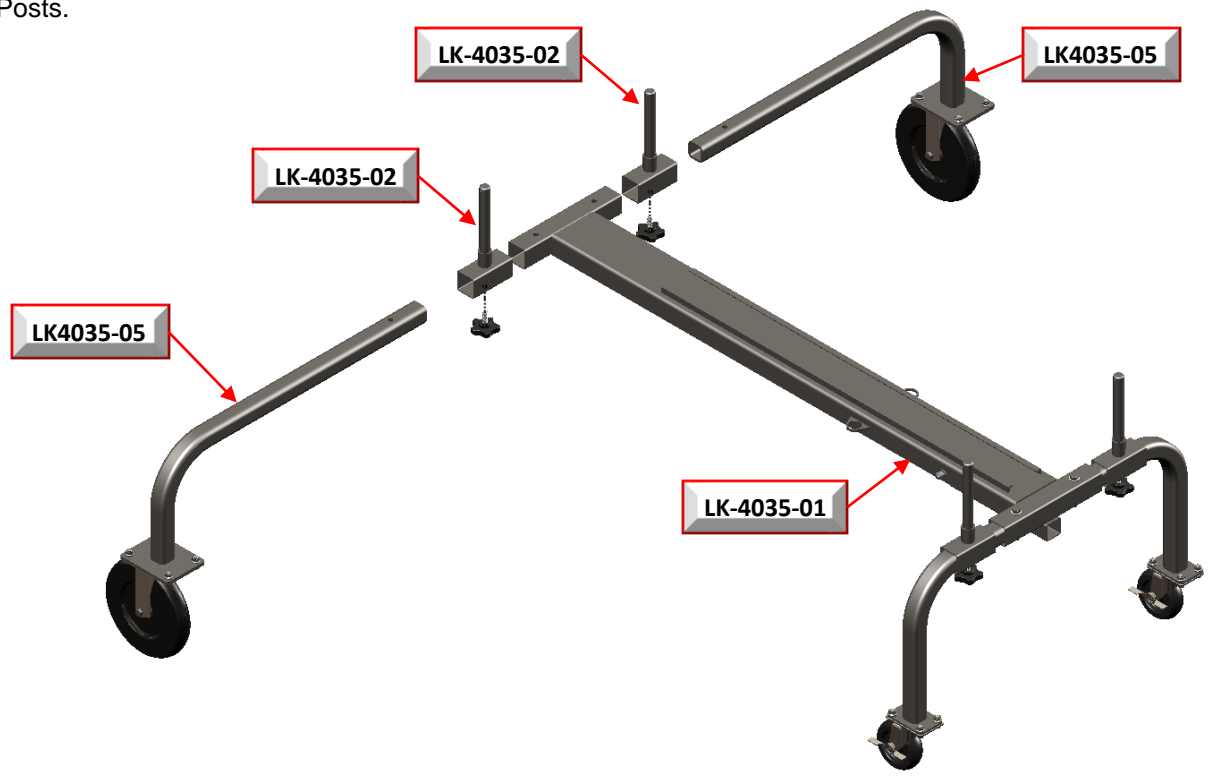
Attach the (2) LK-H020 8" Casters to the (2) LK4035-05 Short Legs, using (8) 5/16-18 x 3/4 hex bolts and (8) 5/16-18 hex flange nut.



Assembly

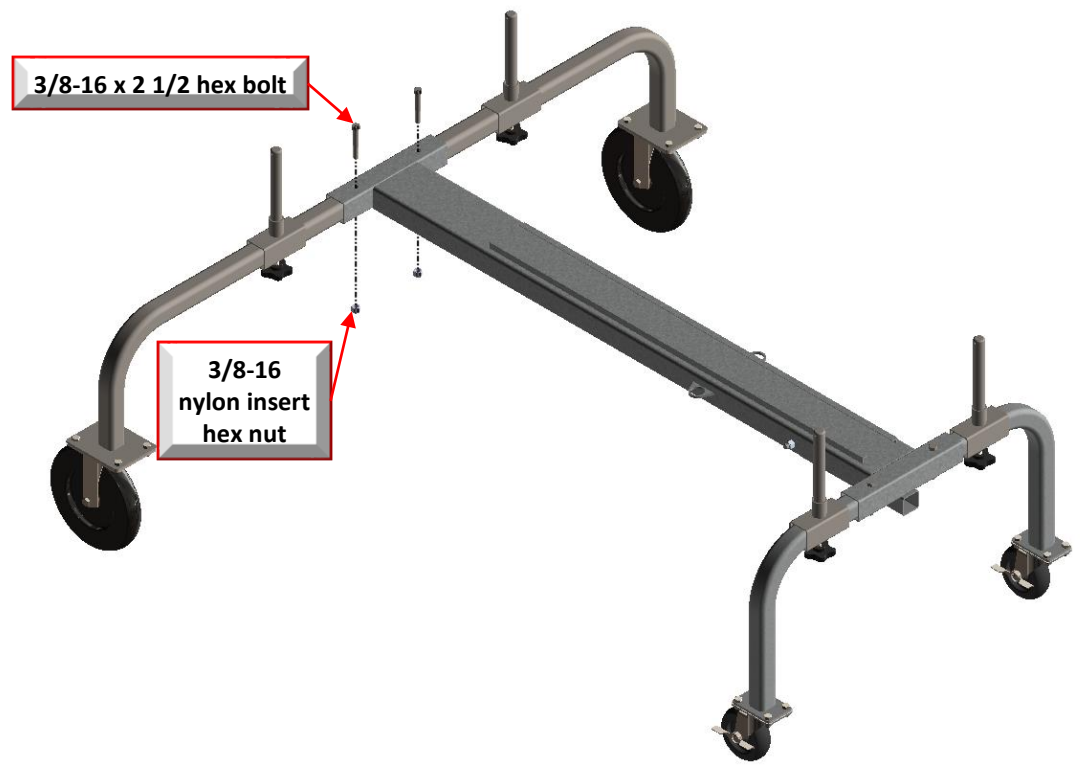
STEP 6

Slide the remaining (2) LK4035-02 Pivot Arm Posts over the (2) LK4035-05 Short Legs. Slide the LK4035-05 Short Legs into the LK4035-01 Semi Hood Dolly Base. Thread (2) LK-H006 3/8-16 Star Knobs into the (2) LK-4035-02 Pivot Arm Posts.



STEP 7

Attach both LK4035-05 Short Legs to the LK4035-01 Semi Hood Dolly Base using (2) 3/8-16 x 2 3/8 hex bolts and (2) 3/8-16 nylon insert hex nuts.

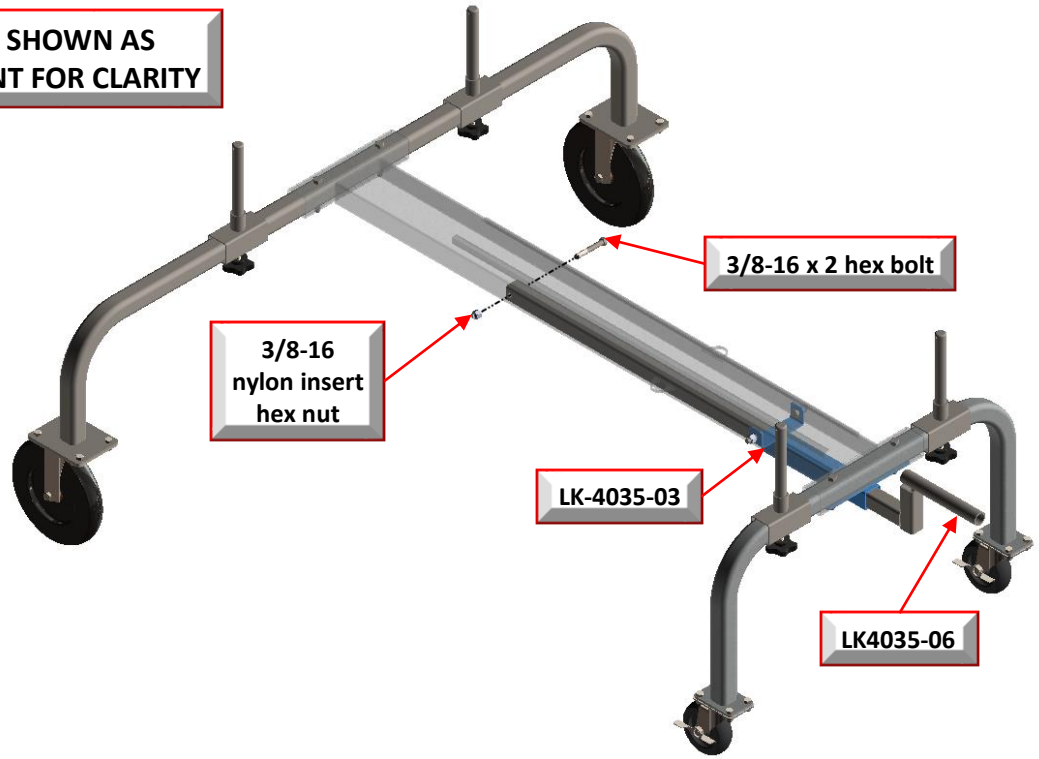


Assembly

STEP 8

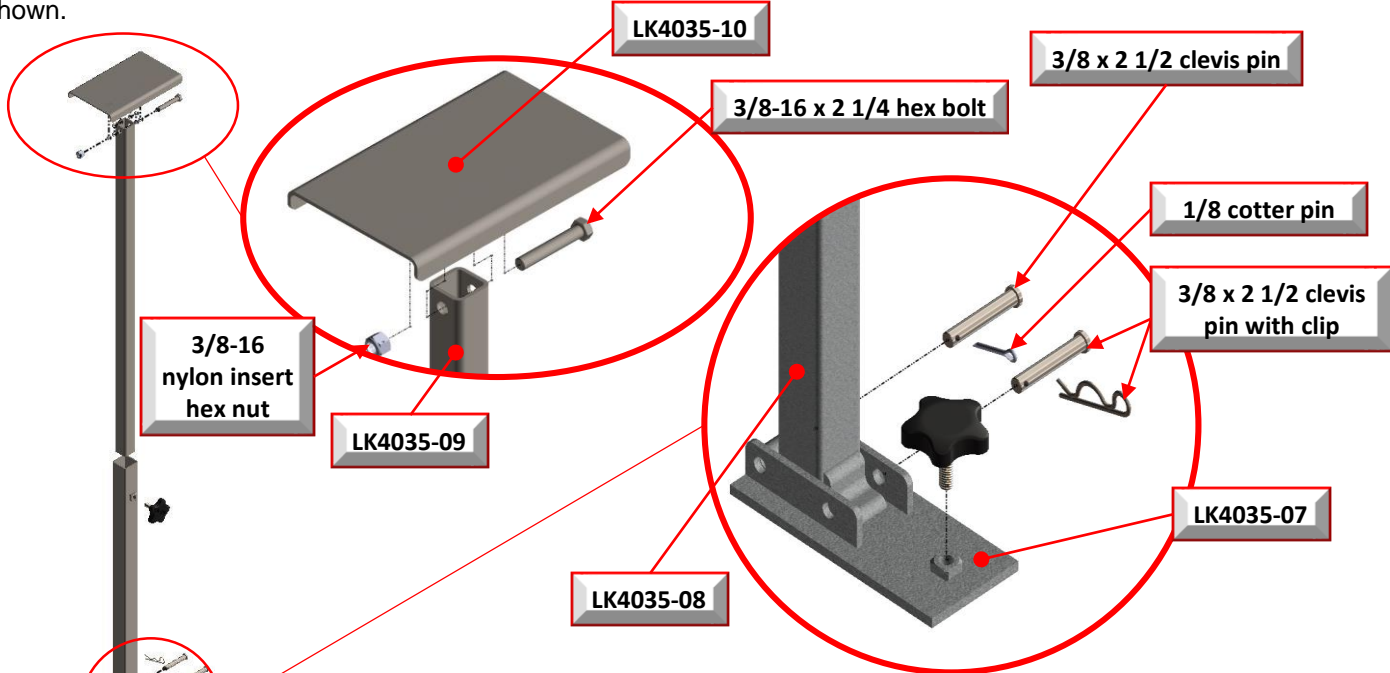
Slide the LK4035-06 Horizontal Slide Bar into the LK4035-03 Horizontal Slide Bar Bracket (shown as BLUE for clarity). Attach (1) 3/8-16 x 2 hex bolts and (1) 3/8-16 nylon insert hex nut to the LK4035-06 Horizontal Slide Bar. These will act as a stop and prevent the LK4035-06 from sliding out of the LK4035-03.

SOME PARTS SHOWN AS TRANSPARENT FOR CLARITY



STEP 9

Attach the LK4035-10 Swivel Pad to the LK4035-09 Upright Tube using (1) 3/8-16 x 2 1/4 hex bolt and (1) 3/8-16 nylon insert hex nut. Attach the LK4035-08 Welded Upright Tube to the LK4035-07 Upright Base Plate using the (2) 3/8 x 2 usable length clevis pins and the (2) 1/8 x 1 1/8 cotter pins. Thread (1) LK-H006 3/8-16 Star Knob into LK-4035-07, as shown.

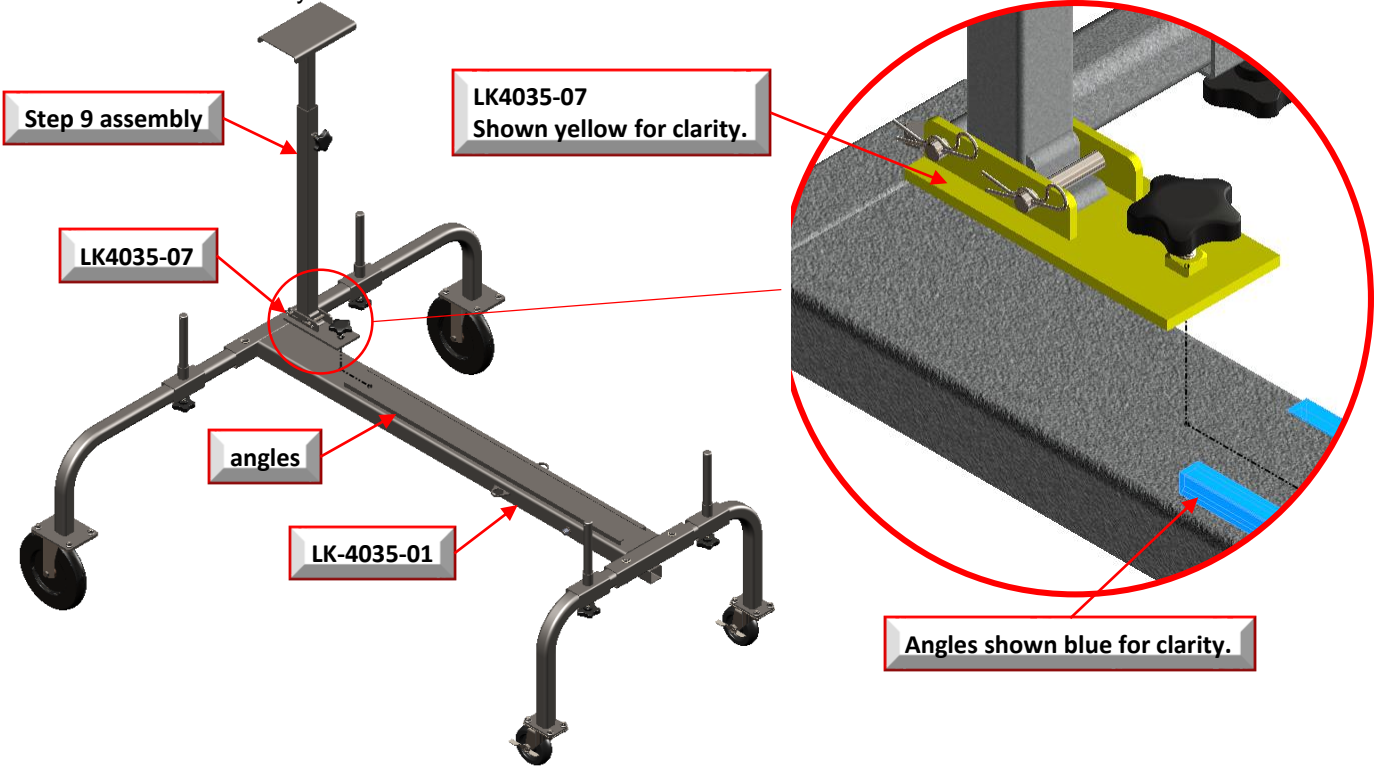


NOTE THE ORIENTATION OF THE ROUND TUBE AND ANGLE ON LK4035-08. LK4035-08 MUST BE MOUNTED TO LK4035-07 IN THIS ORIENTATION.

Assembly

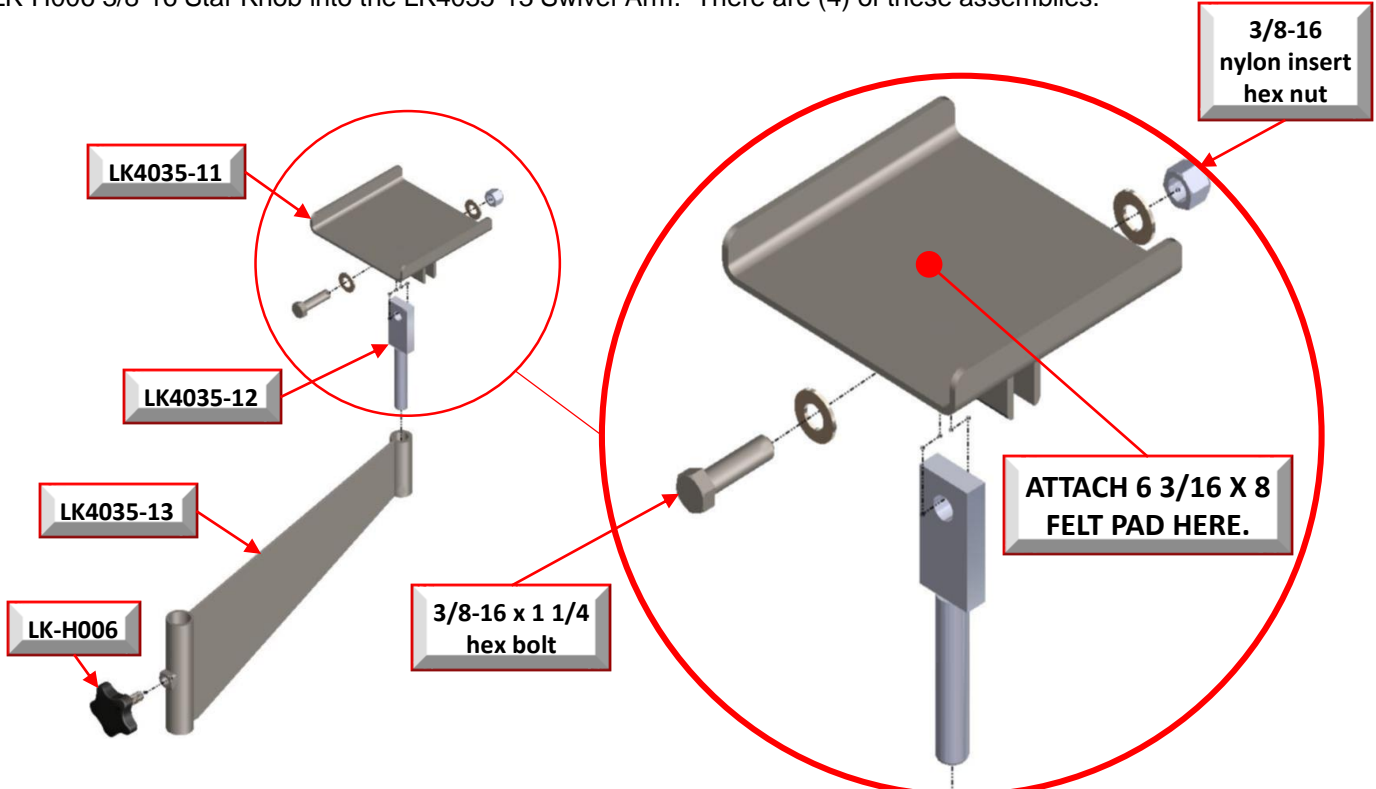
STEP 10

Slide the LK4035-07 Upright Base Plate weldment from the assembly in Step 9 into the slot created by the angles on LK4035-01 Semi Hood Dolly Base.



STEP 11

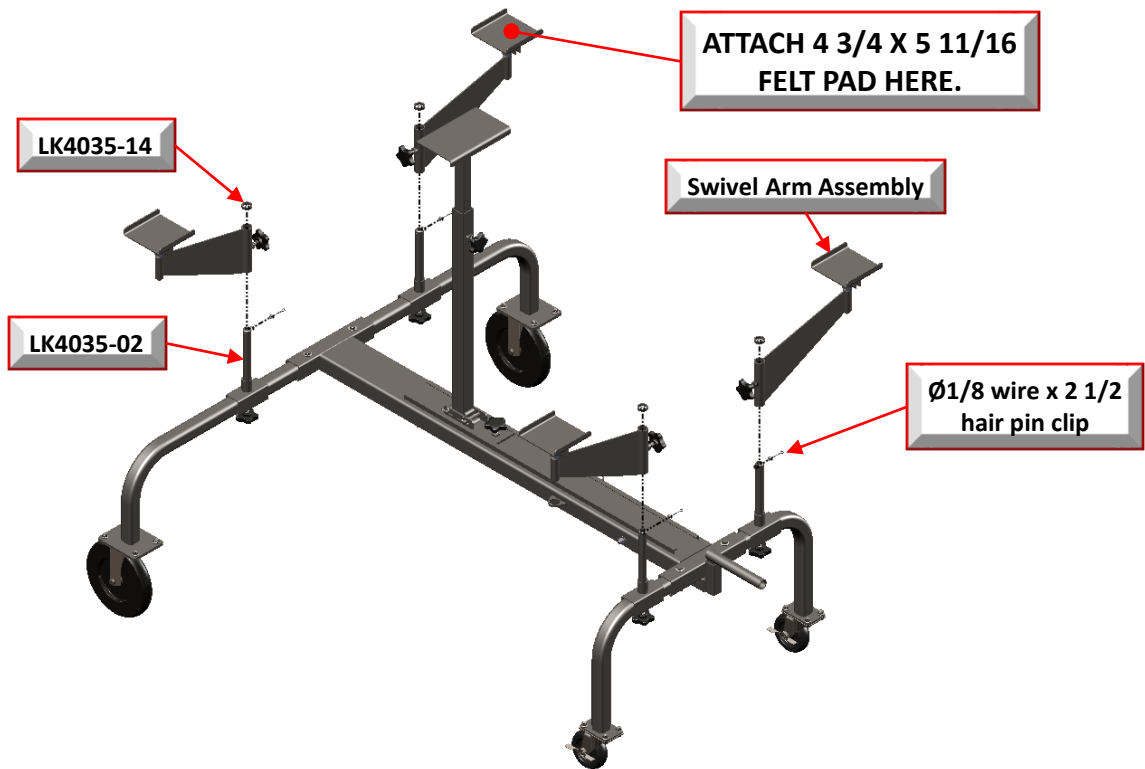
Attach the LK4035-11 Swivel Arm Pad to the LK4035-12 Pad Post using (1) 3/8-16 x 1 3/8 hex bolt, (2) 6/8 flat washers and (1) 3/8-16 nylon insert hex nut. Slide the LK4035-12 Pad Post into LK4035-13 Swivel Arm. Thread (1) LK-H006 3/8-16 Star Knob into the LK4035-13 Swivel Arm. There are (4) of these assemblies.



Assembly

STEP 12

Slide the (4) Swivel Arm assemblies from Step 11 onto the LK4035-02 Pivot Arm Posts. Slide the (4) LK4035-14 $\text{\O}1.05$ O.D. x $\text{\O}.82$ 1/4 Spacers over each of the LK-4035-02 Pivot Arm Posts and secure with the (4) $\text{\O}3/32$ x 1 1/2 cotter pins.



Operation

Adjust the Upright Tube and Swivel Pad assembly, and the Pivot Arms Pads to accommodate most semi hood designs..

