



Lawn Mower Adapter

ASSEMBLY GUIDE



Atlas Automotive Equipment
www.atlasautoequipment.com
(866) 898-2604

Please refer to your vehicle manual to ensure the adapter is suitable for your application
The LMA is not to be used with automobiles
LMA must always be used in tandem

1. The Atlas Lawn Mower Adapter comes in four pieces in two packages. There will be six packing brackets per package.



2. Cut the retention wires that hold the brackets in place, then remove the brackets.



3. Line up the two pieces from the first package.



4. Remove the plastic.



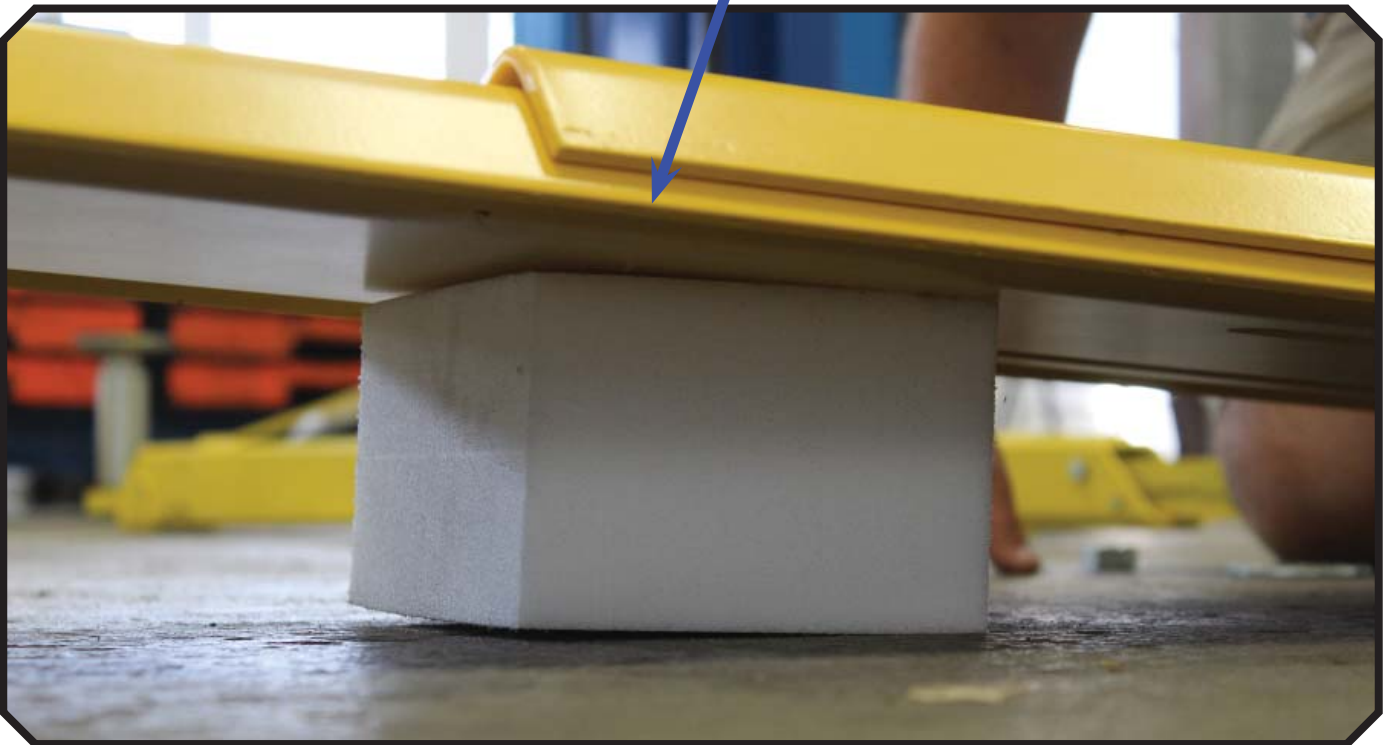
5. Remove the hardware from each part.



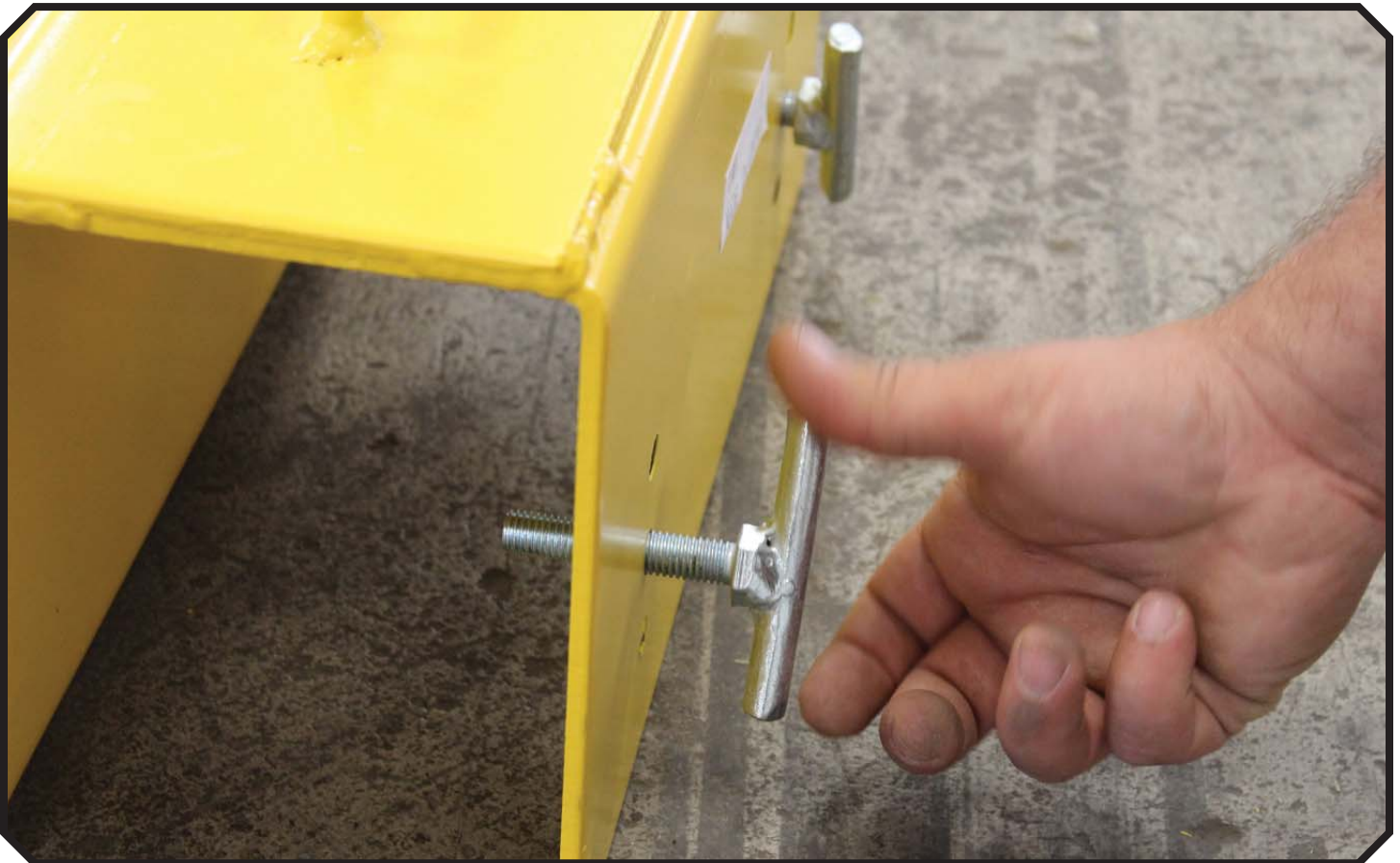
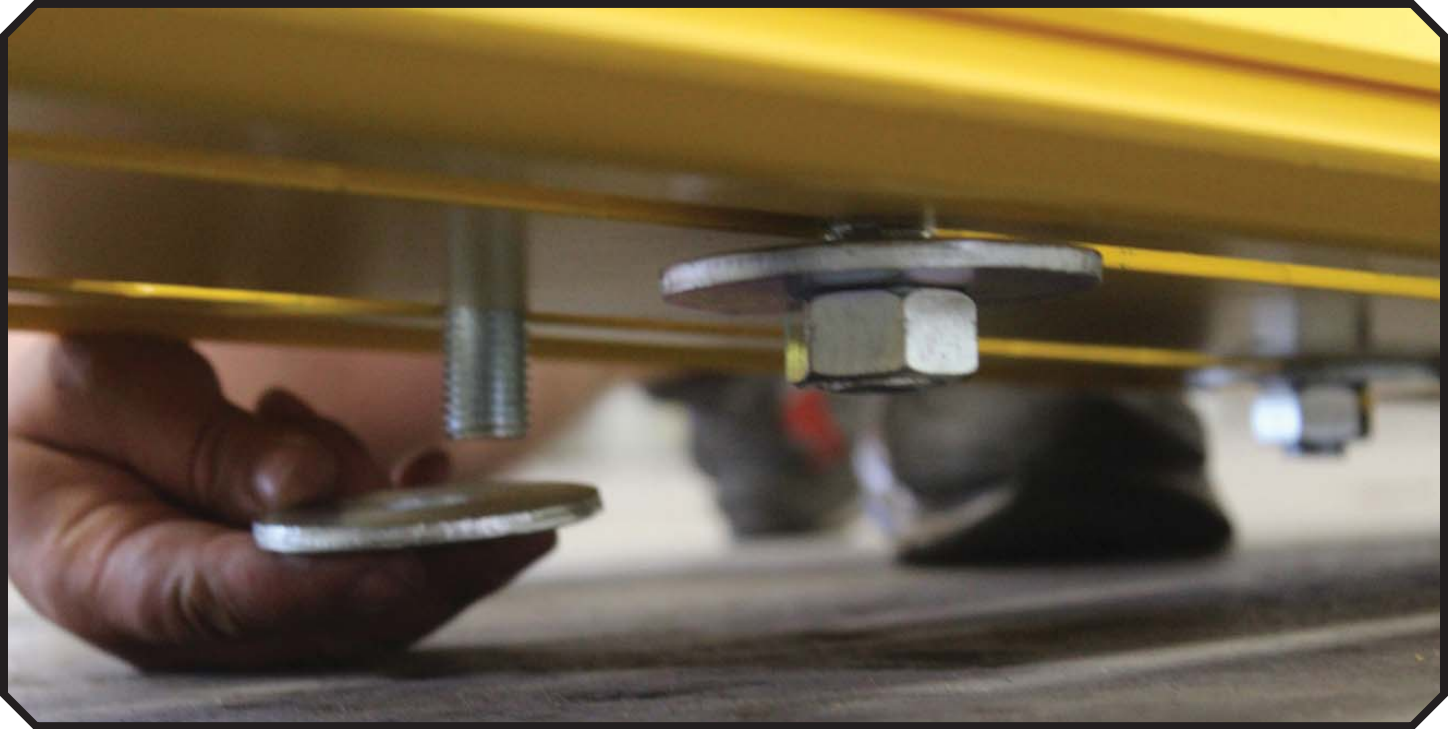
6. Set the two pieces together so that the slits intersect.



7. Elevate the end that is on bottom.



8. Install the hardware. But do not tighten with a wrench until you have the Lawn Mower Adapters on the lift arms.



9. Extend and position the arms.



10. Set the adapters on the lift arms.



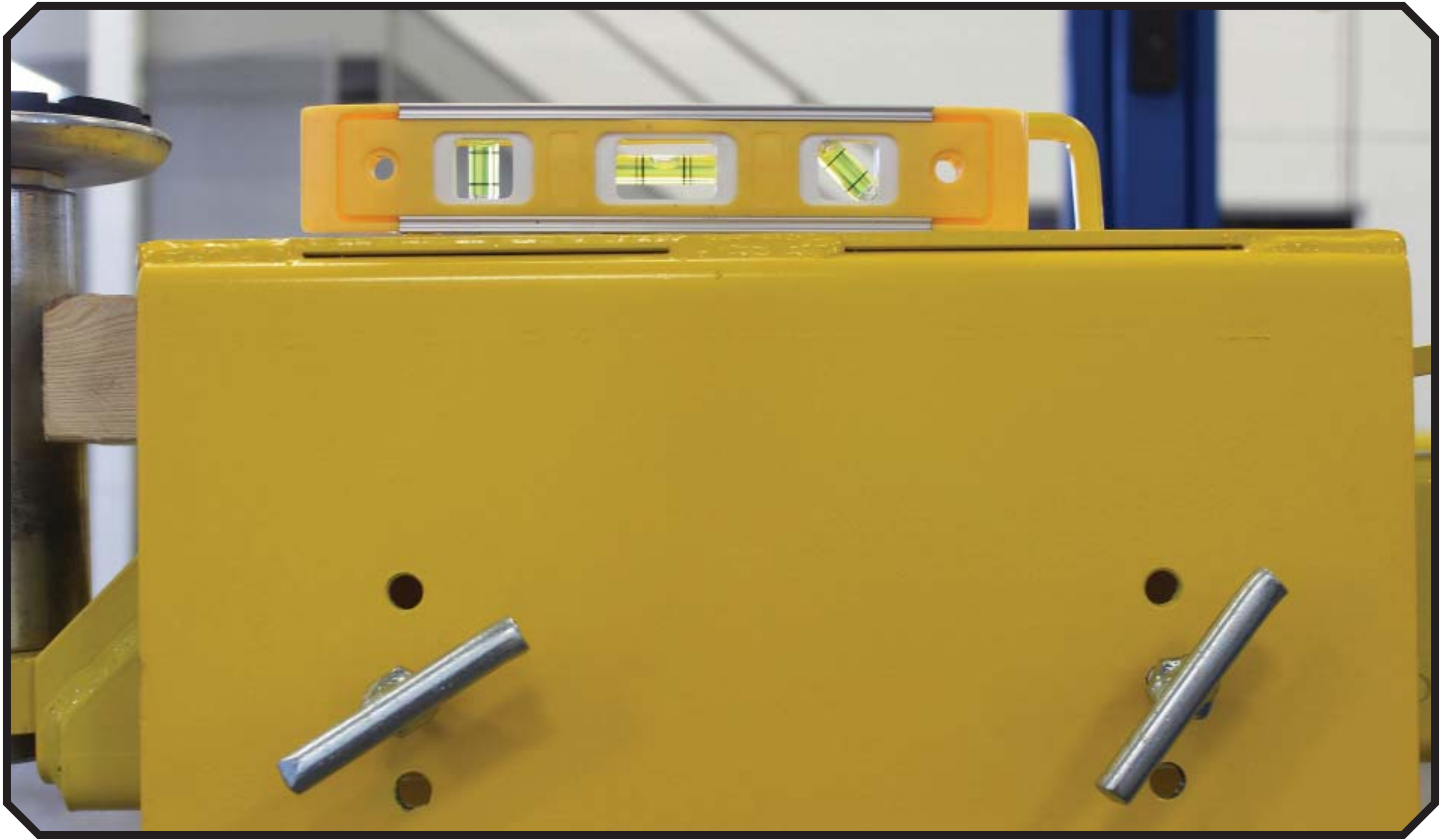
11. Leave the truck adapters installed.



12. If the Lawn Mower Adapter does not sit flat on your lift arms (because all arms vary) then a wood or metal shim may be required to make the Lawn Mower Adapter level.



13. Use a level to ensure the Lawn Mower Adapter is resting flat on the lift arms.



14. Once level, tighten the "T" bolts into the lift arm.

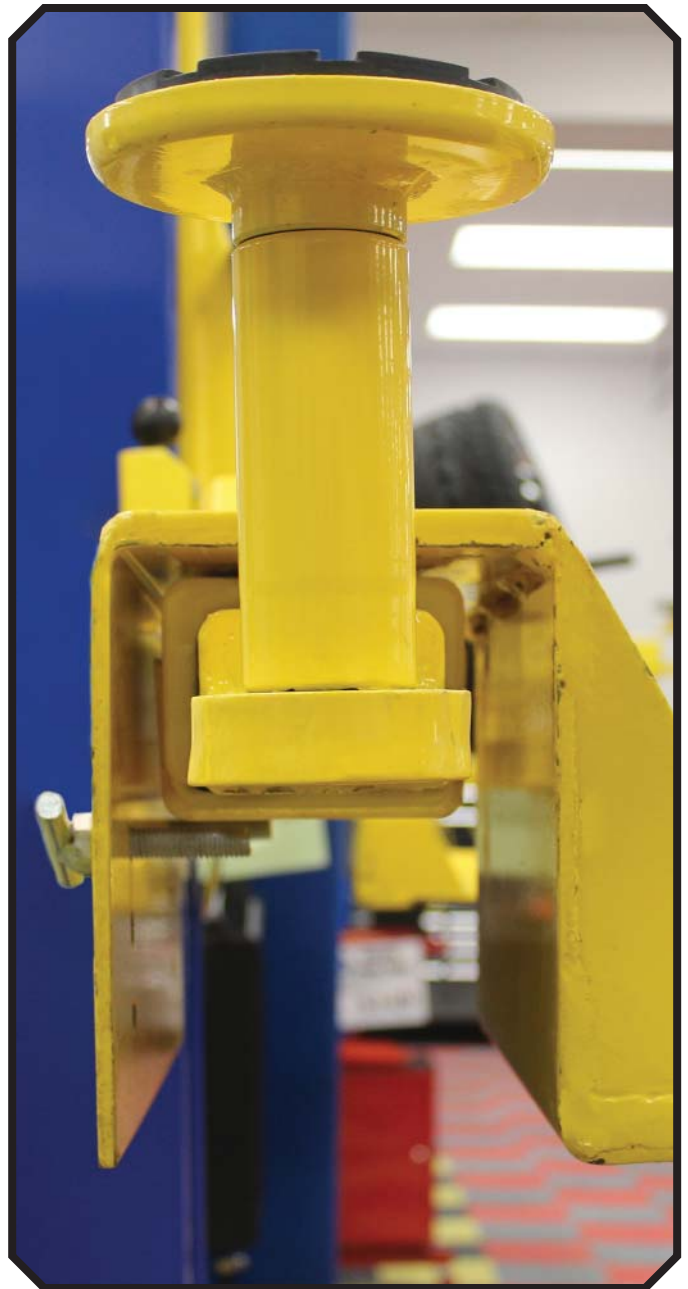


15. If the Lawn Mower Adapter sits flat on the arm without the need for a shim, screw the "T" bolts underneath the arm.





The shims allowed the "T" bolt to contact the side of the lift arm when screwed in.



No shims were needed so the "T" bolt screwed in underneath the lift arm.

16. Now you can tighten the bolts with a wrench or socket.



17. Before lifting a vehicle, make sure the weight is evenly distributed. An unbalanced vehicle can cause damage or injury.

