



LeapFrog® Connect Quick Start Guide

Welcome to the LeapFrog Connect Application, a comprehensive system for managing all of your LeapFrog Connected toys! This Quick Start Guide provides basic instructions to get you started with LeapFrog Connect. Visit the LeapFrog Customer Support website for user guides, video tutorials and other support materials (<http://www.leapfrog.com/support>). Visit the LeapFrog Connect online Help to guide you through the application features (<http://lfccontent.leapfrog.com/help/index.html>).



Installing the LeapFrog Connect Application

- Insert the LeapFrog Connect CD (if one came with your toy) into your computer or download the installer from the LeapFrog Customer Support website (<http://www.leapfrog.com/support>).
Note: You need to install the appropriate version of LeapFrog Connect for each connected toy you own (*Tag, Tag Junior, My Pals Scout and Violet, My Own Leaptop, Leapster Explorer, Leapster2, Didj, Crammer*).
- Follow the prompts to install the LeapFrog Connect Application.

Getting Started with LeapFrog Connect

- Open the LeapFrog Connect Application by double-clicking the LeapFrog Connect icon on your desktop.
- 1 Follow the instructions to connect your toy.

For Tag, Tag Junior, My Pals Scout and Violet, My Own Leaptop and Crammer: Connect the toy to the computer using the USB cable and turn it on. You will be asked to create a LeapFrog parent account.

For Leapster Explorer, Leapster2 and Didj: Create player names on the handheld and then connect the handheld to the computer using the USB cable and turn it on. The player name(s) will automatically transfer to the application.

- On the Create a LeapFrog Account screen, fill in the required information to create your LeapFrog parent account and click the Agree and Continue button (or you can sign in if you already have an account).
- On the “Who plays with these toys?” screen, add the required information for each toy. 2
- When you are done entering information, click the Finish button at the bottom of the screen.
- You have now created a personal Learning Path for your child and have access to all features of the LeapFrog Connect Application.
- On the LeapFrog Home screen, click the “Go” button for the toy you want to explore. 3



See also:

[My Pals Scout and Violet Quick Start Guide](#)

[My Own Leaptop Quick Start Guide](#)

[Tag Junior Quick Start Guide](#)

[Tag Quick Start Guide](#)

[Leapster Explorer Quick Start Guide](#)

[Leapster2 Quick Start Guide](#)

[Didj Quick Start Guide](#)

[Crammer Quick Start Guide](#)

All LeapFrog products may not be available in all countries.
Screenshots are for illustrative purposes only. Actual screenshots may vary.



LeapFrog Connect Quick Start Guide: My Pals Scout and Violet

Welcome to the LeapFrog Connect Application, a comprehensive system for managing all of your LeapFrog Connected toys! This Quick Start Guide provides basic instructions to get you started with LeapFrog Connect. Visit the LeapFrog Customer Support website for user guides, video tutorials and other support materials (<http://www.leapfrog.com/support>). Visit the LeapFrog Connect online Help to guide you through the application features (<http://lfccontent.leapfrog.com/help/index.html>).



Installing the LeapFrog Connect Application

- Download the LeapFrog Connect installer for My Pals from the LeapFrog Customer Support website (www.leapfrog.com/support).
- Follow the prompts to install the LeapFrog Connect Application.

Setting up a LeapFrog Parent Account

- Open the LeapFrog Connect Application by double-clicking the LeapFrog Connect icon on your desktop (if it is not already open).
- 1 Follow the instructions to connect your toy, set up a LeapFrog parent account, and enter information to create a personal LeapFrog® Learning Path for your child. For more information, see the [LeapFrog Connect Quick Start Guide](#).



Making My Pals Your Own

- 2 My Name page: Scout or Violet can express love and friendship to your child by name. Follow the instructions to find the audio for your child's name. Click **Save to My Pal** to save the name to Scout or Violet. Click **Continue to My Picks** to go to the My Picks page.
- My Picks page: Pick an animal, food and color/colour your child loves. Click **Save to My Pal** to save the picks to Scout or Violet. Click **Continue to My Music** to go to the My Music page.
- My Music page: Select up to five lullaby melodies and five daytime melodies to play for your child. Click **Save to My Pal** to save the songs to Scout or Violet. Click **Done** to return to the Home page.
- You have now created a custom puppy for your child. You can return to any screen at any time to make changes.
- To begin playing, click the Eject icon and remove the USB cable from Scout or Violet. Then touch any paw.

My Pals Scout and Violet may not be available in all countries.
Screenshots are for illustrative purposes only. Actual screenshots may vary.



LeapFrog Connect Quick Start Guide: My Own Leaptop™

Welcome to the LeapFrog Connect Application, a comprehensive system for managing all of your LeapFrog Connected toys! This Quick Start Guide provides basic instructions to get you started with LeapFrog Connect. Visit the LeapFrog Customer Support website for user guides, video tutorials and other support materials (<http://www.leapfrog.com/support>). Visit the LeapFrog Connect online Help to guide you through the application features (<http://lfccontent.leapfrog.com/help/index.html>).



Installing the LeapFrog Connect Application

- Download the LeapFrog Connect installer for My Pals from the LeapFrog Customer Support website (www.leapfrog.com/support).
- Follow the prompts to install the LeapFrog Connect Application.

Setting up a LeapFrog Parent Account

- Open the LeapFrog Connect Application by double-clicking the LeapFrog Connect icon on your desktop (if it is not already open).
- 1 Follow the instructions to connect your toy, set up a LeapFrog parent account, and enter information to create a personal LeapFrog® Learning Path for your child. For more information, see the [LeapFrog Connect Quick Start Guide](#).



Personalizing/ Personalising My Own Leaptop

- 2 My Name page: My Own Leaptop can use your child's name in songs and activities. Follow the instructions to save your child's name to My Own Leaptop. Click **Continue to My Emails** to go to the My Emails page.
- My Emails page: Pick a message to send to your child. Then, click the "Add Sender" link to choose the email's sender (for example, "Mommy"). When you have completed all three emails, click **Save to Leaptop** to save your emails to My Own Leaptop. Click **Continue to My Music** to go to the My Music page.
- My Music page: Select one sing-along song and up to five melodies to play on My Own Leaptop. Click **Save to Leaptop** to save the songs to My Own Leaptop. Click **Done** to return to the Home page.
- Make sure to watch the "syncing" message at the top of the application. Do not disconnect or turn off the Leaptop until the message says "Sync complete."
- You have now personalized/personalised Leaptop for your child. You can return to any screen at any time to make changes.
- To begin playing, click the Eject icon and remove the USB cable from My Own Leaptop.

My Own Leaptop may not be available in all countries.
Screenshots are for illustrative purposes only. Actual screenshots may vary.



LeapFrog Connect Quick Start Guide: Tag™ Junior



Welcome to the LeapFrog Connect Application, a comprehensive system for managing all of your LeapFrog Connected toys! This Quick Start Guide provides basic instructions to get you started with LeapFrog Connect. Visit the LeapFrog Customer Support website for user guides, video tutorials and other support materials (<http://www.leapfrog.com/support>). Visit the LeapFrog Connect online Help to guide you through the application features (<http://lfccontent.leapfrog.com/help/index.html>).



Setting up Tag Junior

- Insert batteries and then turn on Tag Junior (the green power light will illuminate).
- Tag Junior includes audio for the included storybook. Touch the Tag Junior to an image, word or icon in the book to hear the audio or play games.
- To download audio for new books, install the LeapFrog Connect Application.

Installing the LeapFrog Connect Application

- Download the LeapFrog Connect installer for Tag Junior from the LeapFrog Customer Support website (www.leapfrog.com/support).
- Follow the prompts to install the LeapFrog Connect Application.



Setting up a LeapFrog Parent Account

- Open the LeapFrog Connect Application by double-clicking the LeapFrog Connect icon on your desktop (if it is not already open).
- Remove the battery cover to access the USB port and connect Tag Junior to the computer using the USB cable.
- **1** Follow the on-screen instructions to connect your toy, set up a LeapFrog parent account, and enter information to create a personal LeapFrog® Learning Path for your child. For more information, see the [LeapFrog Connect Quick Start Guide](#).

Downloading Audio for Tag Junior Books

- Follow these steps to download book audio to Tag Junior. You will need to download audio for each Tag Junior book you purchase.
 - Click **Audio Downloads** in the left navigation to go to the Audio Downloads page. **2**
 - Follow the on-screen instructions to download audio for your child's Tag Junior books to the computer.
 - Click **On My Tag Junior** in the left navigation and follow the instructions to save book audio to Tag Junior. **3**



Teaching Tag Junior Your Child's Name

- Tag Junior can greet your child by name! Go to the **Personalize My Tag Junior** page to start. **4**
- Type your child's name in the First Name field and click **Find Audio**. Click **Save to Tag Junior** to save the name to Tag Junior.

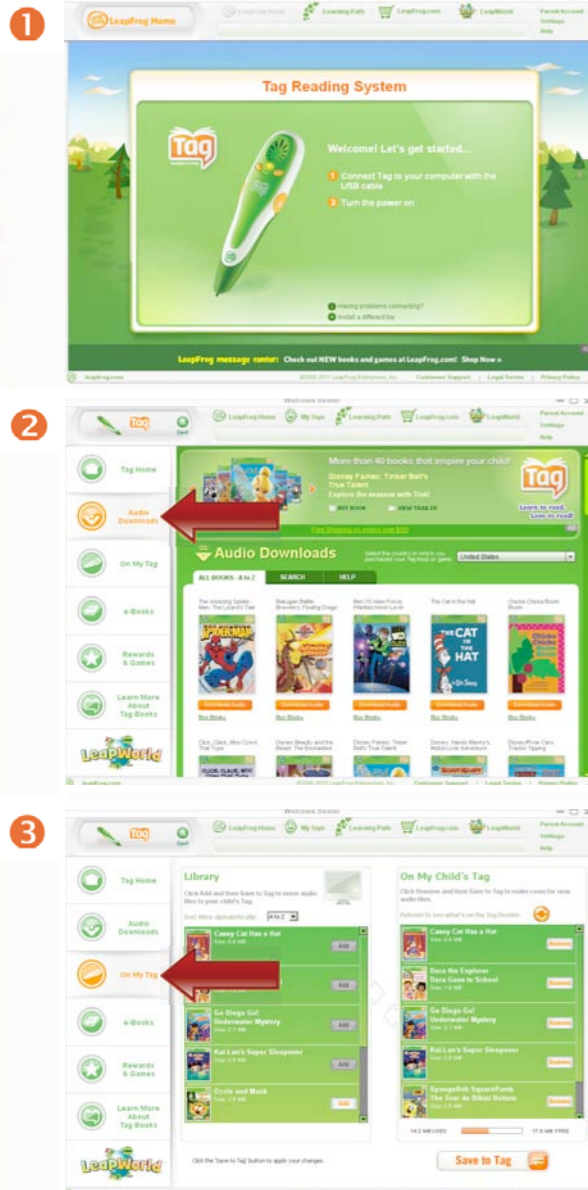
Connect often!

- Connect Tag Junior to your computer often to unlock new rewards and keep your child's Learning Path up to date. Visit <http://www.leapfrog.com/support> to learn more.

Tag Junior may not be available in all countries.
Screenshots are for illustrative purposes only. Actual screenshots may vary.



LeapFrog Connect Quick Start Guide: Tag™



Welcome to the LeapFrog Connect Application, a comprehensive system for managing all of your LeapFrog Connected toys! This Quick Start Guide provides basic instructions to get you started with LeapFrog Connect. Visit the LeapFrog Customer Support website for user guides, video tutorials and other support materials (<http://www.leapfrog.com/support>). Visit the LeapFrog Connect online Help to guide you through the application features (<http://lfccontent.leapfrog.com/help/index.html>).

Setting up the Tag Reader

- Insert batteries and then turn on the Tag Reader (the green power light will illuminate).
- The Tag Reader includes audio for the included storybook. Touch the Tag Reader to an image, word or icon in the book to hear the audio or play games.
- To download audio for new books, install the LeapFrog Connect Application.

Installing the LeapFrog Connect Application

- Insert the LeapFrog Connect CD (included in the box) into your computer or download the installer from the LeapFrog Customer Support website (<http://www.leapfrog.com/support>).
- Follow the prompts to install the LeapFrog Connect Application.

Setting up a LeapFrog Parent Account

- Open the LeapFrog Connect Application by double-clicking the LeapFrog Connect icon on your desktop (if it is not already open).
- 1 Follow the on-screen instructions to connect your toy, set up a LeapFrog parent account, and enter information to create a personal LeapFrog® Learning Path for your child. For more information, see the [LeapFrog Connect Quick Start Guide](#).

Downloading Audio for Tag Books

- Follow these steps to download book audio to the Tag Reader. You will need to download audio for each Tag book you purchase.
 - Click **Audio Downloads** in the left navigation to go to the Audio Downloads page. 2
 - Follow the on-screen instructions to download audio for your child's Tag books.
 - Click **On My Tag** in the left navigation and follow the instructions to save book audio to the Tag Reader. 3

Connect often!

- Connect the Tag Reader to your computer often to unlock new rewards and keep your child's Learning Path up to date. Visit <http://www.leapfrog.com/support> to view the Tag Reader tutorials and learn more.

The Tag Reading System may not be available in all countries.
Screenshots are for illustrative purposes only. Actual screenshots may vary.



LeapFrog Connect Quick Start Guide: Leapster Explorer™



Welcome to the LeapFrog Connect Application, a comprehensive system for managing all of your LeapFrog Connected toys! This Quick Start Guide provides basic instructions to get you started with LeapFrog Connect. Visit the LeapFrog Customer Support website for user guides, video tutorials and other support materials (<http://www.leapfrog.com/support>). Visit the LeapFrog Connect online Help to guide you through the application features (<http://lfccontent.leapfrog.com/help/index.html>).

Setting up the Leapster Explorer handheld

- Insert batteries and then turn on the Leapster Explorer handheld.
- Select your country (required the first time only).
- When prompted, create a player name for each child that will play with the Leapster Explorer handheld (up to 3 can be stored).

Installing the LeapFrog Connect Application

- Insert the LeapFrog Connect CD (included in the box) into your computer or download the installer from the LeapFrog Customer Support website (<http://www.leapfrog.com/support>).
- Follow the prompts to install the LeapFrog Connect Application.

Setting up a LeapFrog Parent Account

- Open the LeapFrog Connect Application by double-clicking the LeapFrog Connect icon on your desktop (if it is not already open).
- 1 Follow the on-screen instructions to connect your toy, set up a LeapFrog parent account, and enter information to create a personal LeapFrog® Learning Path for your child. For more information, see the [LeapFrog Connect Quick Start Guide](#).

Downloading Leaplet learning apps

- On the LeapFrog Home screen, click a player name in the Leapster Explorer box. 2
- Click **Leaplet Store** in the left navigation to visit the Leaplet Store where you can download Leaplet learning apps to your Leapster Explorer handheld.
- Browse through the Leaplet library to find the learning app your child would like to play. 3
- Click the Enter Leaplet Code button and enter the Leaplet code. NOTE: There is a free Leaplet code in your Quick Start Guide. Additional Leaplet codes can be purchased at your favorite retailer. 4

Connect often!

- Connect the Leapster Explorer to your computer often to keep your child's Learning Path up to date. Visit <http://www.leapfrog.com/support> to view the Leapster Explorer tutorials and learn more.
- Kids can use the rewards they earn from their play and learning on Leapster Explorer to build their own online playground in LeapWorld. Create a character, build a home and play online learning games!

The Leapster Explorer handheld may not be available in all countries. Screenshots are for illustrative purposes only. Actual screenshots may vary.



LeapFrog Connect Quick Start Guide: Leapster®2

Welcome to the LeapFrog Connect Application, a comprehensive system for managing all of your LeapFrog Connected toys! This Quick Start Guide provides basic instructions to get you started with LeapFrog Connect. Visit the LeapFrog Customer Support website for user guides, video tutorials and other support materials (<http://www.leapfrog.com/support>). Visit the LeapFrog Connect online Help to guide you through the application features (<http://lfccontent.leapfrog.com/help/index.html>).



Setting up the Leapster2 handheld

- Insert batteries and then turn on the Leapster2 handheld.
- Select your country (required the first time only).
- When prompted, create a player name for each child that will play with the Leapster2 handheld (up to 3 can be stored).

Installing the LeapFrog Connect Application

- Insert the LeapFrog Connect CD (included in the box) into your computer or download the installer from the LeapFrog Customer Support website (<http://www.leapfrog.com/support>).
- Follow the prompts to install the LeapFrog Connect Application.



Setting up a LeapFrog Parent Account

- Open the LeapFrog Connect Application by double-clicking the LeapFrog Connect icon on your desktop (if it is not already open).
- 1 Follow the on-screen instructions to connect your toy, set up a LeapFrog parent account, and enter information to create a personal LeapFrog® Learning Path for your child. For more information, see the [LeapFrog Connect Quick Start Guide](#).

Downloading a Starter Game

- On the LeapFrog Home screen, click a player name in the Leapster2 box. 2
- Click **Games** in the left navigation to go to the Games page.
- Follow the on-screen directions to select and download your child's game of choice. 3
- After the starter game has been downloaded, you can download demo games and watch trailers on the Games page.



Getting the Most Out of LeapFrog Connect

- Have your child select their player name each time they play with their Leapster2 handheld.
- Connect the handheld to your computer often to unlock new rewards and keep your child's Learning Path up to date.
- Visit <http://www.leapfrog.com/support> to view the [Leapster2 tutorials](#) and learn about accessing games and using the online Art Studio and Art Gallery.

The Leapster2 Learning Game System may not be available in all countries. Screenshots are for illustrative purposes only. Actual screenshots may vary.



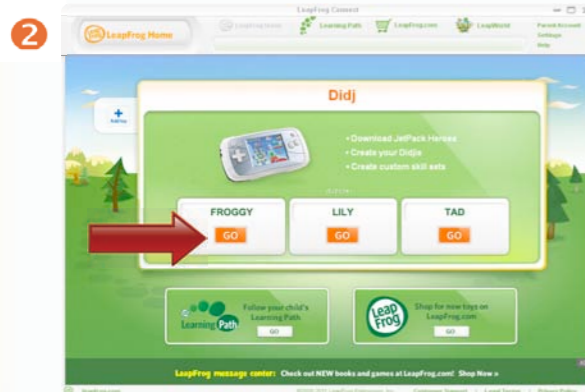
LeapFrog Connect Quick Start Guide: Didj™

Welcome to the LeapFrog Connect Application, a comprehensive system for managing all of your LeapFrog Connected toys! This Quick Start Guide provides basic instructions to get you started with LeapFrog Connect. Visit the LeapFrog Customer Support website for user guides, video tutorials and other support materials (<http://www.leapfrog.com/support>). Visit the LeapFrog Connect online Help to guide you through the application features (<http://lfccontent.leapfrog.com/help/index.html>).



Setting up the Didj handheld

- Insert batteries and then turn on the Didj handheld.
- Select your country (required the first time only).
- When prompted, create a player name for each child that will play with the Didj handheld (up to 3 can be stored). This information can be changed at any time from the About Me menu screen on the Didj handheld.
- Before playing any games, install the LeapFrog Connect Application and connect the Didj handheld to your computer as outlined below to ensure your child's Didj handheld has the latest updates.



Installing the LeapFrog Connect Application

- Insert the LeapFrog Connect CD (included in the box) into your computer or download the installer from the LeapFrog Customer Support website (<http://www.leapfrog.com/support>).
- Follow the prompts to install the LeapFrog Connect Application.

Connecting the Didj handheld to your computer

- Open the LeapFrog Connect Application by double-clicking the LeapFrog Connect icon on your desktop (if it is not already open).
- **1** Follow the on-screen instructions to connect your toy.
- Accept prompts for updates to the Didj handheld. **DO NOT DISCONNECT THE HANDHELD WHILE THE STATUS BAR INDICATES THAT IT IS SYNCING.** Please be patient as this may take a while.
- Follow the on-screen instructions to set up a LeapFrog parent account, then enter information to create a personal LeapFrog® Learning Path for your child. For more information, see the [LeapFrog Connect Quick Start Guide](#).
- On the LeapFrog Home screen, click a player name in the Didj box **2** to access all the features of your handheld.

Playing with your new handheld

- LeapFrog Connect will automatically save the JetPack Heroes game when the Didj handheld is connected, so your child can begin play!
- Connect your child's Didj handheld often to keep their LeapFrog Learning Path up to date.
- Visit <http://www.leapfrog.com/support> to view the [Didj tutorials](#) and help documentation to learn:
 - How your child can earn Bitz or points to customize/customise their games
 - How your child can use the Didjerator to create custom characters to play with
 - How you can create custom Skill Sets so your child can study what they need to know as they play

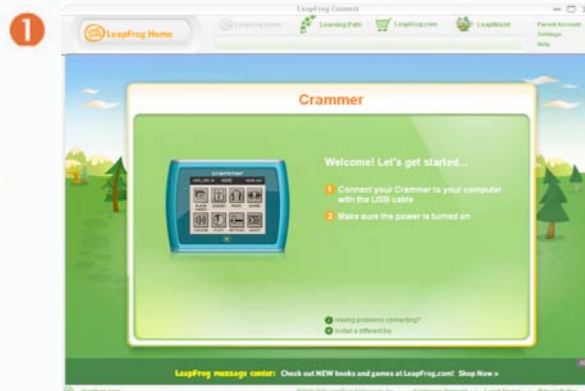


The Didj Custom Gaming System may not be available in all countries. Screenshots are for illustrative purposes only. Actual screenshots may vary.



LeapFrog Connect Quick Start Guide: Crammer™

Welcome to the LeapFrog Connect Application, a comprehensive system for managing all of your LeapFrog Connected toys! This Quick Start Guide provides basic instructions to get you started with LeapFrog Connect. Visit the LeapFrog Customer Support website for user guides, video tutorials and other support materials (<http://www.leapfrog.com/support>). Visit the LeapFrog Connect online Help to guide you through the application features (<http://lfccontent.leapfrog.com/help/index.html>).



Setting up the Crammer handheld

- Insert three AAA batteries, and then turn on the Crammer handheld (the Home screen will display).

Installing the LeapFrog Connect Application

- Connect the Crammer handheld to your computer using the included USB cable and turn it on.
- An Internet connection is required for the following step:
 - Windows users: Follow the instructions on the computer to download the installer and install the LeapFrog Connect Application.
 - Mac users: Open the Crammer Installer on your computer and double-click the installation file. Follow the instructions on the computer to complete the installation of the LeapFrog Connect Application.
- If you have problems with the step above, you can download the installer from the LeapFrog Customer Support website (www.leapfrog.com/support). Follow the prompts to download and install the LeapFrog Connect Application for Crammer.



Setting up a LeapFrog Parent Account

- Open the LeapFrog Connect Application by double-clicking the LeapFrog Connect icon on your desktop (if it is not already open).
- 1 Follow the on-screen instructions to connect your toy, set up a LeapFrog parent account, and enter information to create a personal LeapFrog® Learning Path for your child. For more information, see the [LeapFrog Connect Quick Start Guide](#).

Flash Cards, Quizzes, Music and More

- Parents: Connect the Crammer handheld to your computer often to see your child's progress on the LeapFrog Learning Path.
- Kids: Use the LeapFrog Connect Application to:
 - Create your own digital flash cards.
 - Download thousands of free math, social studies, science and language arts quiz questions.
 - Import music to listen to on the Crammer handheld.

The Crammer Study & Sound System may not be available in all countries. Screenshots are for illustrative purposes only. Actual screenshots may vary.