

AVERATEC

6200 Series Notebook PC

User Manual



Regulations Information

FCC-B Radio Frequency Interference Statement

This equipment has been tested and found to comply with the limits for a Class B digital device, pursuant to part 15 of the FCC rules. These limits are designed to provide reasonable protection against harmful interference in a residential installation. This equipment generates, uses and can radiate radio frequency energy and, if not installed and used in accordance with the instructions, may cause harmful interference to radio communications. However, there is no guarantee that interference will not occur in a particular installation. If this equipment does cause harmful interference to radio or television reception, which can be determined by turning the equipment off and on, the user is encouraged to try to correct the interference by one or more of the following measures:

- ❶ Reorient or relocate the receiving antenna.
- ❷ Increase the separation between the equipment and receiver.
- ❸ Connect the equipment into an outlet on a circuit different from that to which the receiver is connected.
- ❹ Consult the dealer or an experienced radio/TV technician for help.

Note

1. The changes or modifications not expressly approved by the party responsible for compliance could void the user's authority to operate the equipment.
2. Shield interface cables and AC power cord, if any, must be used in order to comply with the emission limits.

FCC Conditions

This device complies with part 15 of the FCC Rules. Operation is subject to the following two conditions:

1. This device may not cause harmful interference.
2. This device must accept any interference received, including interference that may cause undesired operation.





Safety Guideline for Using Lithium Battery

(Danish) ADVARSEL! Lithiumbatteri – Eksplosionsfare ved fejlagtig håndtering. Udskiftning må kun ske med batteri af samme fabrikat og type. Levér det brugte batteri tilbage til leverandøren.

(Deutsch) VORSICHT: Explosionsgefahr bei unsachgemäßem Austausch der Batterie. Ersatz nur durch denselben oder einen vom Hersteller empfohlenen gleichwertigen Typ. Entsorgung gebrauchter Batterien nach Angaben des Herstellers.

(English) CAUTION: Danger of explosion if battery is incorrectly replaced. Replace only with the same or equivalent type recommended by the equipment manufacturer. Discard used batteries according to manufacturer's instructions.

(Finnish) VAROITUS: Paristo voi räjähtää, jos se on virheellisesti asennettu. Vaihda paristo ainoastaan valmistajan suosittelemaan tyyppiin. Hävitä käytetty paristo valmistajan ohjeiden mukaisesti.

(French) ATTENTION: Il y a danger d'explosion s'il y a remplacement incorrect de la batterie. Remplacer uniquement avec une batterie du même type ou d'un type équivalent recommandé par le constructeur. Mettre au rebut les batteries usagées conformément aux instructions du fabricant.

(Norwegian) ADVARSEL: Eksplosjonsfare ved feilaktig skifte av batteri. Benytt samme batteritype eller en tilsvarende type anbefalt av apparatfabrikanten. Brukte batterier kasseres i henhold til fabrikantens instruksjoner.

(Swedish) VARNING: Explosionsfara vid felaktigt batteribyte. Använd samma batterityp eller en ekvivalent typ som rekommenderas av apparattillverkaren. Kassera använt batteri enligt fabrikantens instruktion.



Caution on Using Modem

1. Never install telephone wiring during a lightning storm.
2. Never install telephone jacks in wet locations unless the jack is specifically designed for wet locations.
3. Never touch uninsulated telephone wires or terminals unless the telephone line has been disconnected at the network interface.
4. Use caution when installing or modifying telephone lines.
5. Avoid using the telephone function (other than a cordless type) during an electrical storm. There may be a remote risk of electric shock from lightning.
6. Do not use the telephone function to report a gas leak in the vicinity of the leak.
7. Use cable recommended in the User Guide.

CD-ROM Drive Notice

CAUTION: This appliance contains a laser system and is classified as a “CLASS 1 LASER PRODUCT.” To use this model properly, read the instruction manual carefully and keep this manual for your future reference. In case of any trouble with this model, please contact your nearest “AUTHORIZED service station.” To prevent direct exposure to the laser beam, do not try to open the enclosure.

Safety Instructions



1. Read the safety instructions carefully and thoroughly.
2. Save this User's Guide for possible use later.
3. Keep this equipment away from humidity and high temperature.
4. Lay this equipment on a stable surface before setting it up.
5. The openings on the enclosure are used for air convection and to prevent the equipment from overheating. Do not cover the openings.
6. Make sure that the power voltage is within its safety range and has been adjusted properly to the value of 100~240V before connecting the equipment to the power inlet.
7. Place the power cord in a way that people are unlikely to step on it. Do not place anything on the power cord.
8. Always unplug the power cord before inserting any add-on card or module.
9. All cautions and warnings on the equipment should be noted.
10. Never pour any liquid into the opening that could damage the equipment or cause an electrical shock.
11. If any of the following situations arises, get the equipment checked by a service personnel:
 - ❶ the power cord or plug is damaged.
 - ❷ liquid has penetrated into the equipment.
 - ❸ the equipment has been exposed to moisture.
 - ❹ the equipment has not work well or you can not get it work according to User's Guide.
 - ❺ the equipment was dropped and damaged.
 - ❻ the equipment has obvious signs of breakage.
12. Do not leave the equipment in an unconditioned environment with a storage temperature of 60°C (140°F) or above, which may damage the equipment.
13. To prevent explosion caused by improper battery replacement, use the same or equivalent type of battery recommended by the manufacturer only.



Copyright Notice

The material in this guide is the intellectual property of **AVERATEC**. We take every care in the preparation of this document, but no guarantee is given as to the correctness of its contents. Our products are under continual improvement and we reserve the right to make changes without notice.

Please note that the setting diagrams or values in this guide are **FOR YOUR REFERENCE ONLY**. The model you bought may be slightly different from the illustrations and descriptions in this guide. If you are not sure about these information, such as the computer's specification and equipment, please call us with **1-877-462-3462**, or via e-mail: customercare@averatec.com.

Trademarks

- * All trademarks are the properties of their respective owners.
- * Microsoft is a registered trademark of Microsoft Corporation. Windows® 98/ME/2000/XP are registered trademarks of Microsoft Corporation.
- * AMI® is a registered trademark of American Megatrends Inc.
- * PCMCIA is registered trademarks of the Personal Computer Memory Card International Association.

Release History

Version	Revision Note	Date
1.0	First release	Sep. 2004

Table of Content

1 Getting Started

1.1 Before You Begin	1-2
● Unpacking	1-2
● Features and Benefits	1-3
1.2 Quick Components Guide	1-4
● Top-open View	1-4
● Front View	1-6
● Right-side View	1-8
● Left-side View	1-10
● Bottom View	1-12
1.3 Preparing to Operate	1-13
● Connecting the Power	1-13
● Turning On/Off the Notebook PC	1-15

2 Basics of Using Notebook PC

2.1 Safety and Comfort Tips	2-2
● Set Up Your Work Environment	2-2
● Have a Good Work Habit	2-3
2.2 Knowing the Keyboard	2-4
● Typewriter Keys	2-5
● Cursor Keys	2-6
● Numeric Keys	2-7
● Function Keys	2-8
2.3 Knowing the Touchpad	2-9
● Using the Touchpad	2-10
● Configuring the Touchpad	2-12

2.4 Using the Optical Storage Device	2-13
● Inserting the CD	2-14
● Removing the CD	2-15
● Releasing the CD Manually	2-15
2.5 The Hard Disk Drive	2-16
2.6 Using the Video Function	2-17
● Configuring the Display Settings	2-17
2.7 Using the Audio Function	2-19
● Connecting Audio Devices	2-19
● Volume Control	2-19
2.8 Direct Play Function	2-20
● Control Key Function	2-20
● Key Definition	2-21
● Message on the LCM	2-22

3 Using the Software Applications

3.1 Using the Recovery CD	3-2
● Resuming the Operating System	3-2
3.3 Activating Your System	3-4

4 Power Management

4.1 Introduction to the Power Source	4-2
● The AC Adapter	4-2
● The Battery Pack	4-3
4.2 Managing the Power	4-6
● Power Options	4-6

5 BIOS Setup

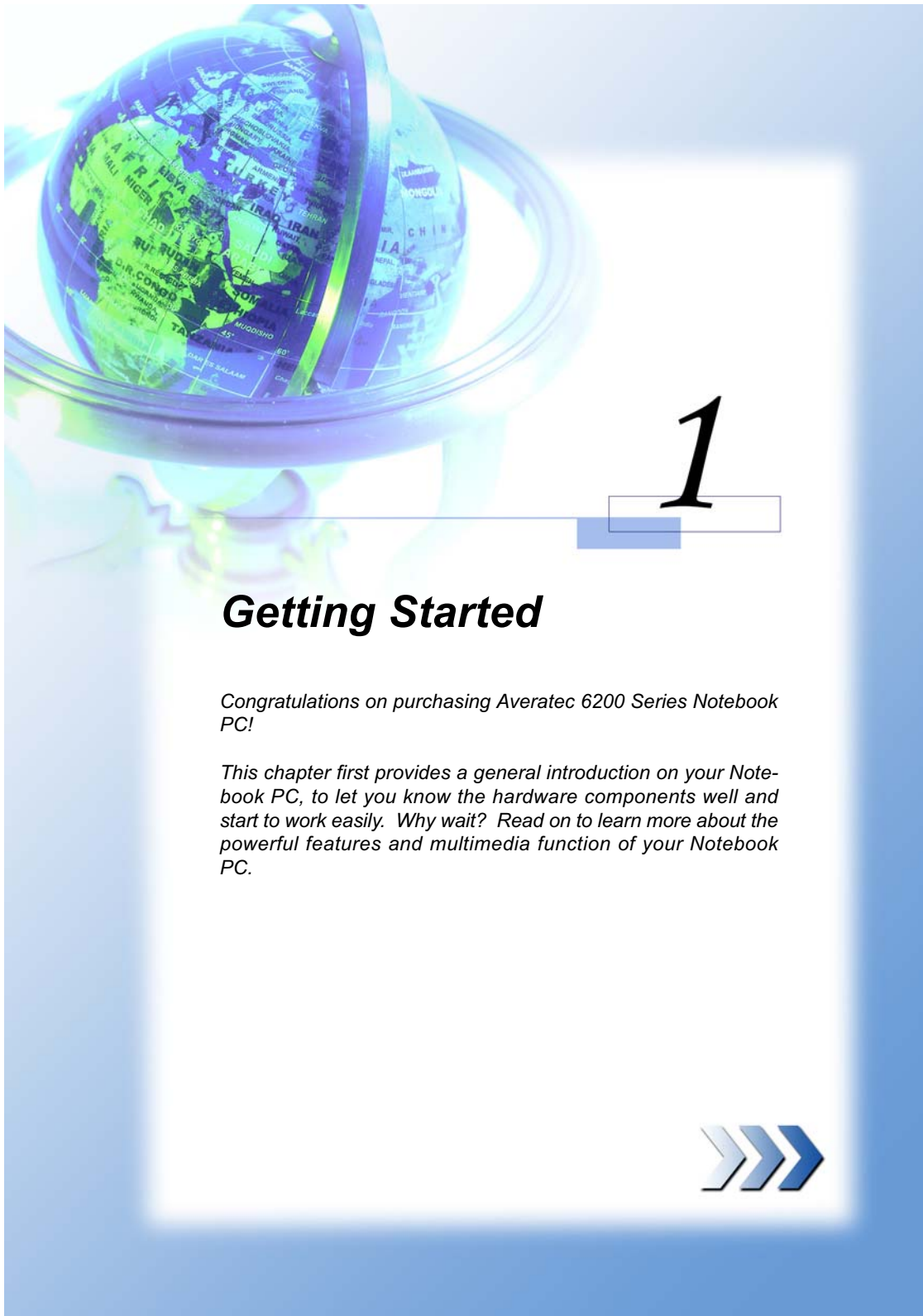
5.1 Using BIOS Setup Utility	5-2
• When to Use BIOS Setup?	5-2
• How to Run BIOS Setup?	5-2
• Control Keys	5-3
5.2 Main Menu	5-4
5.3 System Overview	5-6
5.4 Advanced Settings	5-8
5.5 Security Settings	5-10
5.6 Boot Settings	5-11
5.7 Power Settings.....	5-12
5.8 Exit Options.....	5-13

6 Expanding and Upgrading

6.1 Connecting the External Devices	6-2
• Connecting the Peripheral Devices	6-2
• Connecting the Communication Devices	6-4
• Installing the PC Card	6-6
6.2 Safely Remove Hardware	6-8
6.3 Upgrading Your System	6-9

7 Caring Your Notebook PC

7.1 Protecting Your Notebook PC	7-2
Locking Your Computer	7-2
● Setting Up Password	7-3
● Using the Anti-Virus Protection	7-4
7.2 Tips for Traveling	7-5
7.3 Taking Care of Your Computer	7-6
● Placing and Operating Your Computer	7-6
● Cleaning Your Computer	7-7
● Using the Battery Pack	7-7



1

Getting Started

Congratulations on purchasing Averatec 6200 Series Notebook PC!

This chapter first provides a general introduction on your Notebook PC, to let you know the hardware components well and start to work easily. Why wait? Read on to learn more about the powerful features and multimedia function of your Notebook PC.



6200 Series Notebook PC



1.1 Before You Begin



Unpacking

First, unpack the shipping carton and check all items carefully. If any item contained is damaged or missing, please contact your local dealer immediately. Also, keep the box and packing materials in case you need to ship the unit in the future.

The package should contain the following items:

- ▶ One Notebook PC - Averatec 6200 series.
- ▶ Three Recovery CDs containing the drivers, utilities, and user manual.
- ▶ One Quick Start Guide.
- ▶ One Warranty Card.
- ▶ One MPI card (MSworks 7.0)
- ▶ Accessories:
 - High-capacity Li-ion battery pack.
 - AC adapter and power cord.



→ Features and Benefits

Next Generation CPU Support. Your Notebook PC is equipped with one of the latest CPU (central processing unit) that supports Mobile AMD® technology for excellent system performance and ultimate mobile function.

Integrated Wireless LAN Solution. The computer is pre-installed with the IEEE802.11g networking solution that allows you to roam between different rooms in the office or at home, without being disconnected the LAN cable.

USB 2.0 Support. The computer has four USB 2.0 ports that support data transfer rate up to 480Mb/s. The USB standard allows you to connect up to 127 devices through the single interface, including mouse, keyboard, printer, hard disk drive, digital camera, and more.

Communication Ports. Support 56K Fax/MODEM (**Cable size at least 26 or above**). In addition, sharing files and printers can be easy tasks. The PC also supports Realtek 8201 PCI LAN, Wake On LAN which supports on S3/S4 (AC mode) state and LAN Boot system.

Memory. The computer provides two memory slots that allows you to expand the memory size up to 2GB.

Innovative Direct Play Function. Without turning on the system, you can enjoy your favorite multimedia with DVD, video CD, audio CD, MP3 with its unparalleled sound system (simply by the fancy remoter controller).

15.4" Wide Screen. Experience the greatest visual presentation on your Notebook PC! You can enjoy extreme entertainment with the 15.4" TFT colour LCD screen (WXGA with 1280x800 resolution).

6200 Series Notebook PC



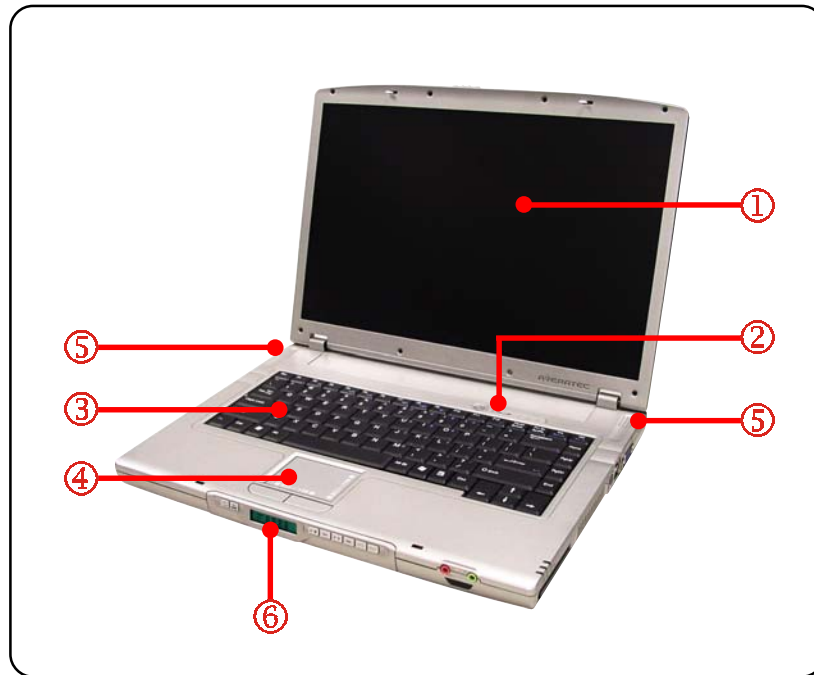
1.2 Quick Components Guide

This section provides the multi-views of your Notebook PC, and briefly introduces the function of each component.


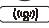


Top-open View

Press the Cover Latch to open the top cover (see page 1-6), and you can find the main operating area of your computer.





- ① **Display Panel**
The 15.4-inch WXGA TFT color LCD screen displays the output of the computer.
- ② **Quick Launch Buttons and Power Button:**
 -  - **Power Button:** to turn the computer power ON and OFF.
 -  - **Quick Launch Button:** this one-touch button allows you to turn on/off the wireless LAN function easily.
- ③ **Keyboard**
The built-in keyboard provides all the functions of a full-sized 87/88-key keyboard (see *Using Keyboard* in Chapter 2 for more information).
- ④ **Touchpad**
The pointing device of the computer (see *Using Touchpad* in Chapter 2 for more information).
- ⑤ **Stereo Speakers**
The next-generation high quality speakers send out the sound and voice from the computer.
- ⑥ **LCM Panel**
The innovative “DVD Direct Play” function with the fancy LCM panel will bring you with a whole new multimedia experience.

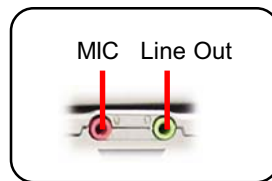


⑤ **Consumer Infrared**

It is used to transfer the Remote Controller signal to control the device.

⑥ **Audio Port Connectors**

- **Line Out** is a connector for speakers or headphones;
- **MIC** is a connector for microphones.

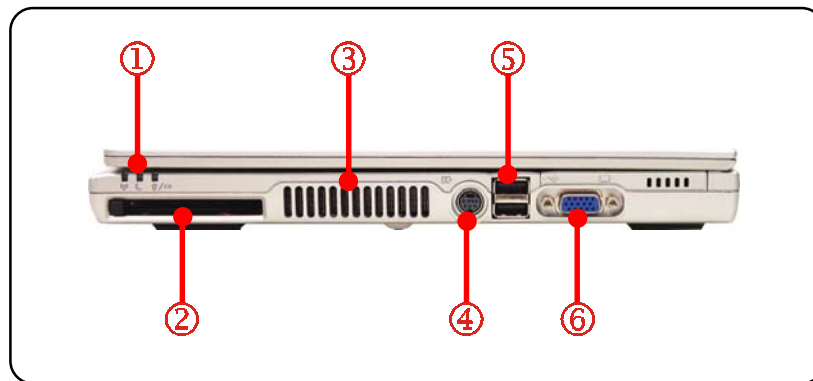


6200 Series Notebook PC






➔ Right-side View

Knowing the components on the right side of your computer.



① Status LED

-  - **Battery Status (Green/Orange)**: ON (**Green**) - battery is fully charged; ON (**Orange**) - battery is charging; Blinking (**Orange**) - battery low or bad.
-  - **Power On/Off/Suspend (Blue)**: Blinking - system in suspend mode; ON - system fully on; OFF - system off.
-  - **Wireless LAN (Green)**: ON - wireless LAN enabled; OFF - wireless LAN disabled.

② PC Card Slot

The computer provides a PC card slot to support one Type-II PC card for expansion functions, such as LAN/WLAN card, modem card, memory card, etc.

③ Ventilator

The ventilator is designed to cool the system. DO NOT block the ventilator for air circulation.

④ S-Video Connector

By using a Super VHS (S-Video) cable, this connector allows you to connect a television (NTSC/PAL system) for a great view of the computer display.



⑤ **USB Ports:** The USB 2.0 ports allow you to connect USB-interface peripheral devices, such as the mouse, keyboard, modem, external hard disk module, printer, and more. There are two of four USB ports on the right side of your laptop.

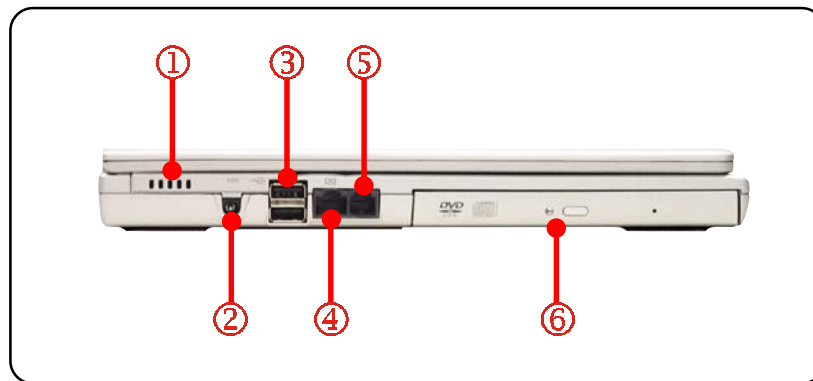
⑥ **VGA Port**
The 15-pin D-sub VGA port allows you to connect an external monitor or other standard VGA-compatible device (such as a projector) for a great view of the computer display.

6200 Series Notebook PC



→ Left-side View

Knowing the components on the left side of your computer.



① **Speaker outlet**

② **Power Connector**

To connect the AC adapter and supply power for the computer.

③ **USB Ports**

The USB 2.0 ports allow you to connect USB-interface peripheral devices, such as the mouse, keyboard, modem, external hard disk module, printer, and more.

④ **RJ-45 Connector**

The 100/10 Ethernet connector is used to connect a LAN cable for network connection.

⑤ **RJ-11 Connector**

The computer provides a built-in modem that allows you to connect an RJ-11 telephone line through this connector. With the 56K V.90 modem, you can make a dial-up connection.



⑥ Optical Storage Device

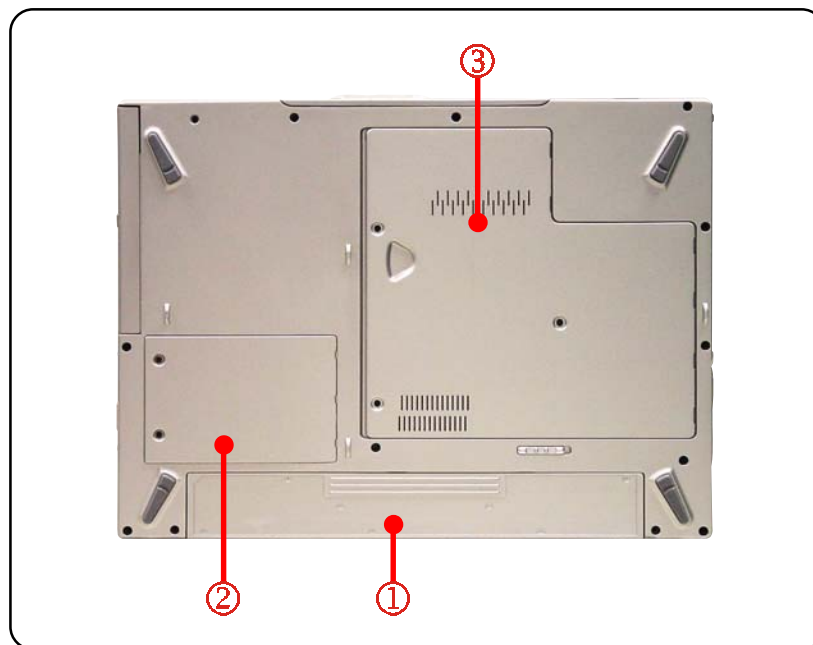
A slim CD-ROM/DVD-ROM/CD-RW/DVD Combo/DVD Dual drive is available in the computer, depending on the model you purchased. The optical device allows you to use the CD/DVD disc for installing software, accessing data, and playing music/movie on the computer.

6200 Series Notebook PC



➔ Bottom View

Carefully put the computer upside down, and you can find the core components of the computer.



- ① Battery Pack**
To supply power to your computer when the AC adapter is not connected (see *Introduction to the Power Source* in Chapter 4 for more information).
- ② HDD Compartment**
Inside this compartment is the Hard Drive.
- ③ Mini PCI, Memory, CPU Compartment**
The built-in wireless LAN card of the computer is installed in this compartment. This compartment also includes two SO-DIMM slots for expanding the memory size up to 2GB. Also include the Central Processor Unit. Please note that the memory installation/replacement must be done by an authorized retailer.



1.3 Preparing to Operate



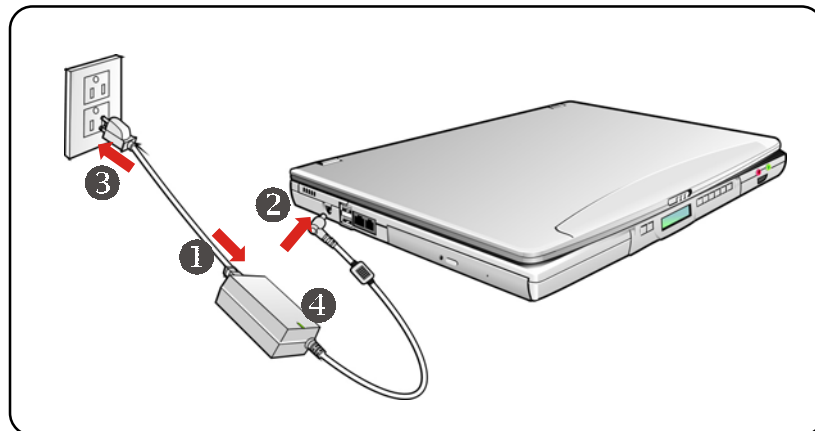
Connecting the Power

Your Notebook PC is equipped with a high-capacity 8-cell Li-ion battery pack, and it can operate either on the battery's power or AC power. However, for the first time to use your Notebook PC, it is recommended to connect the AC adapter and use the AC power. When the AC adapter is connected, the battery is charged immediately. Please **NOTE** that the AC adapter included in the package is correct for your Notebook PC; using other adapter model may damage the computer or other devices on the computer.



Connecting the AC Power

1. Unpack the package to find the AC adapter and power cord.
2. Attach the power cord to the connector of the AC adapter (❶).
3. Plug the DC end of the adapter to the computer (❷), and the male end of the power cord to the electrical outlet (❸).
4. When the AC adapter is connected, the green LED on the AC adapter will light up (❹) to indicate that the computer is powered from the electrical outlet.

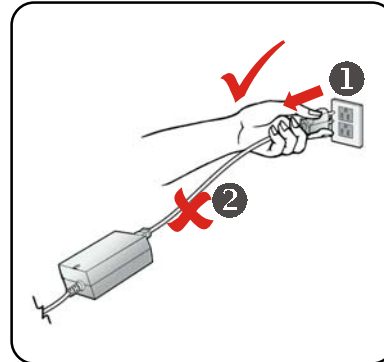


6200 Series Notebook PC

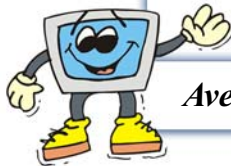


❶ Disconnecting the AC Power

When you disconnect the AC adapter, you should unplug the power cord from the electrical outlet first, and then unplug the connector from the computer. When unplugging the power cord, always hold the connector part of the cord, never pull the cord.



1. The AC adapter included in the package is correct for your Notebook PC; using other adapter model may damage the computer or other devices on the computer.
2. When unplugging the power cord, always hold the connector part of the cord (❶), never pull the cord (❷).



Averatec reminds you



➔ Turning On/Off the Notebook PC

Now, when the AC adapter is connected, you are ready to use your computer.

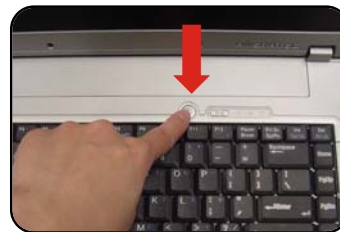
🔍 Opening the Top Cover

First, open the top cover by sliding the cover button on the front side of the computer, and then lifting the top cover gently. You can tilt the top cover forward/backward to the optimal viewing position.



🔍 Turning On the Computer

1. Make sure that the computer is connected to the AC power.
2. Press the power button (⏻).
Once pressed, the power button will light **Green** to indicate that the computer is turned on.
3. When the computer is turned on, it will first perform a series of diagnostic tests that is called **Power-On Self Test (POST)**.



Then, the operating system (such as Microsoft Windows XP in this manual) should start, and you can start to work with your Notebook PC!

🔍 Power-On Self Test

The POST (Power-On Self Test) is a software controlled diagnostic test tool, which is a set of routines stored in a computer's ROM (Read-Only Memory) that tests various system components such as the memory, disk drives, and the keyboard to see whether they are properly connected and operating. If problems are found during booting, these routines alert the user by sounding a series of beeps or displaying a message on the screen.

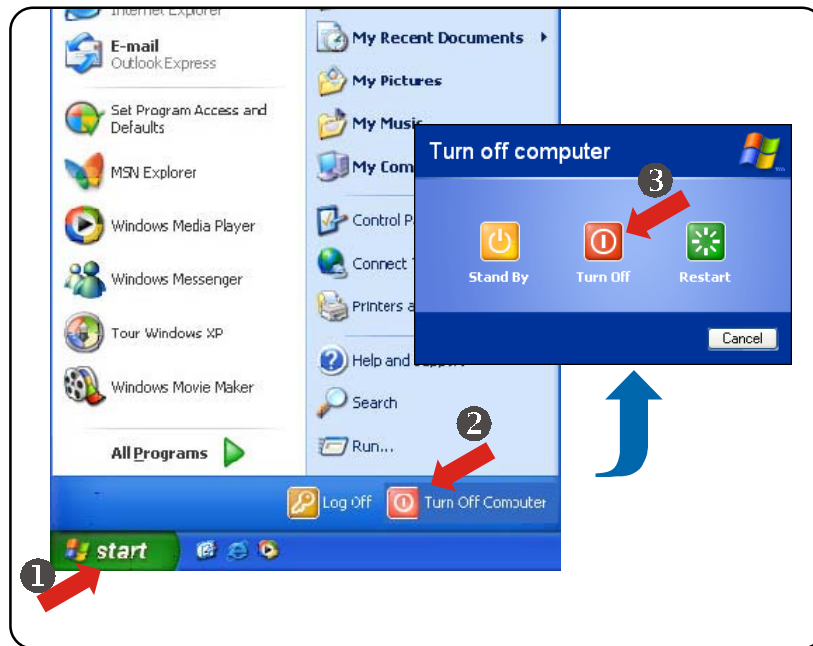
6200 Series Notebook PC



Turning Off the Computer

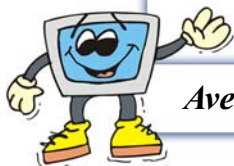
In Windows operating system, always use the “**Shut Down**” command of the system to turn off the computer. This is the normal operating procedure that can prevent the system problems.

1. Click **Start** (1) from the taskbar, and then select the **Turn Off Computer** option (2).
2. Click **Turn Off** (3) to turn off the system.





1. *If you are working on a program, such as Microsoft Word, you should save the data and close the program first, and then turn off the computer. Otherwise, you may lose your data.*
2. *Confirm that the Hard Disk In-use LED is OFF before turning off the computer. Also, remember to remove any CD disk from the drive.*
3. *Gently tilt down the top cover when you are closing the cover, and make sure that the cover latches click into place securely.*



Averatec reminds you



2

Basics of Using Notebook PC

This chapter introduces the operating basics for your Notebook PC, including the use of keyboard, touchpad, LCD panel, hard disk drive, and optical storage device. It also includes the advanced features such as Direct Play and communication functions.



6200 Series Notebook PC



2.1 Safety and Comfort Tips

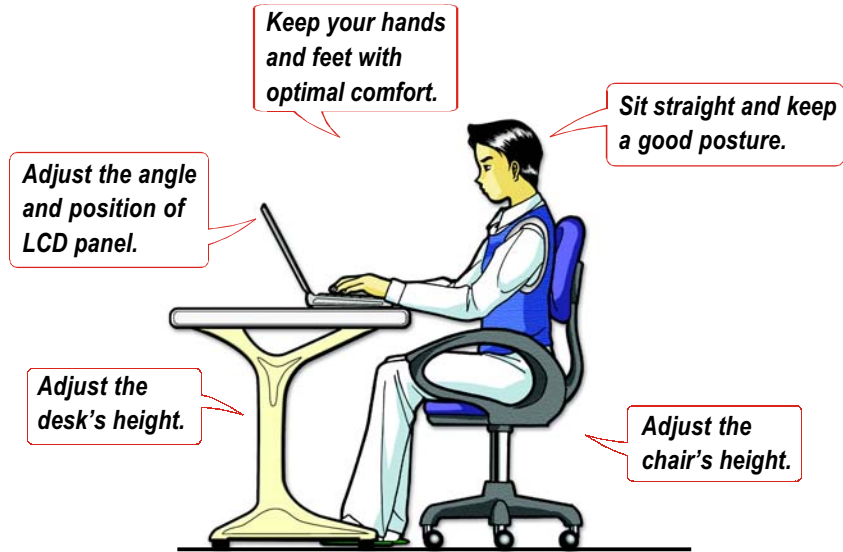
- I If you are a beginner to the Notebook PC, please read the following tips to make yourself safe and comfortable during the operation.



Set Up Your Work Environment

The Notebook PC is a portable platform that allow you to work anywhere. However, choosing a good workspace is important if you have to work with your Notebook PC for long periods of time.

- ▶ Your work area should have enough illumination.
- ▶ Choose the proper desk and chair, and adjust their height to fit your posture when operating.
- ▶ When sitting on the chair, adjust the chair's back (if available) to make your back comfortably.
- ▶ Place your feet flat and naturally on the floor, so that your knees and elbows have the proper position (about 90-degree) when operating.
- ▶ Put your hands on the desk naturally to support your wrists.
- ▶ Adjust the angle/position of the LCD panel, so that you can have the optimal view.
- ▶ Avoid using your Notebook PC in the space where may cause your discomfort (such as on the bed).
- ▶ The Notebook PC is an electrical device, please treat it with great care to avoid personal injury.
- ▶ The proposed temperature in the ambience is 5~35 Centigrade degree, or 41~95 Fahrenheit degree.



Setting up your work environment

Have a Good Work Habit

Have a good work habit is important if you have to work with your Notebook PC for long periods of time; otherwise, it may cause discomfort or injury to you. Please keep the following tips in mind when operating.

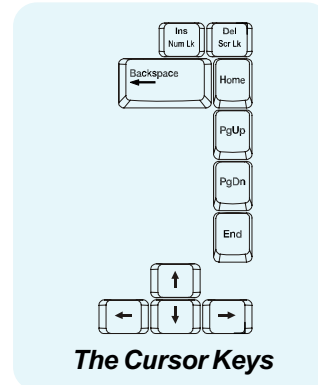
- Change your posture frequently.
- Stretch and exercise you body regularly.
- Remember to take breaks after working for a period of time.









6200 Series Notebook PC



➔ Cursor Keys

The keyboard provides four cursor (arrow) keys and [Home], [PgUp], [PgDn], [End] keys at the lower right corner, which are used to control the cursor movement.



	Move the cursor left for one space.
	Move the cursor right for one space.
	Move the cursor up for one line.
	Move the cursor down for one line.
	Move to the previous page.
	Move to the next page.
	Move to the beginning of the line (or document).
	Move to the end of the line (or document).



The Backspace key, [Ins] and [Del] keys at the upper right corner are used for editing purposes.

6200 Series Notebook PC






→ Function Keys



Windows Keys



You can find the Windows Logo key () and one Application Logo key () on the keyboard, which are used to perform Windows-specific functions, such as opening the Start menu and launching the shortcut menu. For more information of the two keys, please refer to your Windows manual or online help.



[Fn] Key



The keyboard provides a [Fn] key () at the lower left corner, which is to be used with another key to perform the alternative function of a key. This combination of keys can be called “hot key” in operating your Notebook PC, which allows you to perform some special functions easily and quickly. The hot keys includes:



 +  Switch the display output mode between the LCD, external monitor, and Both.



 +  Increase the LCD brightness.

 +  Decrease the LCD brightness.

 +  Decrease the built-in speaker's volume.

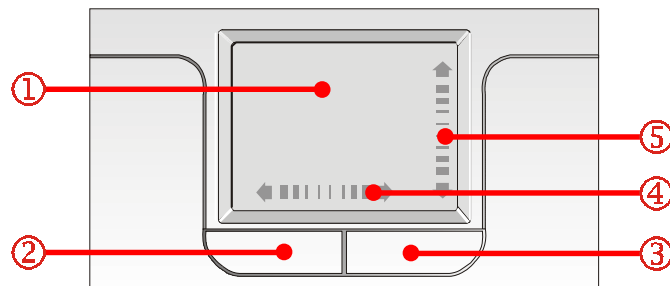
 +  Increase the built-in speaker's volume.

 +  Disable the computer's audio function.

 +  Force the computer into suspend mode (depending on the system configuration).



The touchpad integrated in your computer is a pointing device that compatible with the standard mouse, allowing you to control the computer by pointing the location of the cursor on the screen and making selection with its two buttons.



The Touchpad

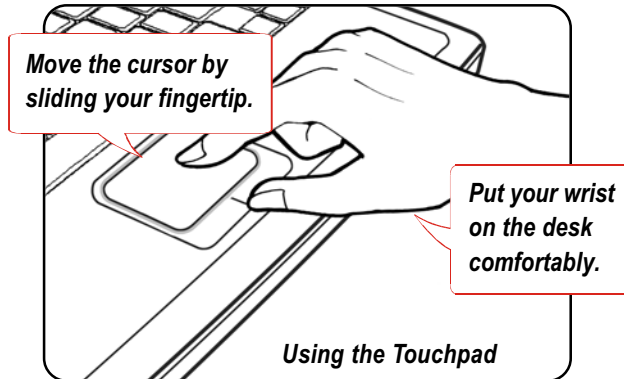
- ① **Cursor Movement Area**
The pressure-sensitive area of the touchpad, allows you to place your finger on it and control the cursor on the screen by moving your finger.
- ② **Left Button**
Acts as the mouse's left button.
- ③ **Right Button**
Acts as the mouse's right button.
- ④ **Right/Left Scrolling Arrow**
Allows you to scroll the cursor right and left.
- ⑤ **Up/Down Scrolling Arrow**
Allows you to scroll the cursor up and down.



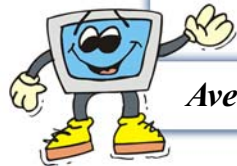
➔ Using the Touchpad

The following table and diagrams provide some tips that you should know when using the touchpad:

- **Positioning and Moving:** Place your finger on the touchpad (usually using the forefinger), and the rectangular pad will act as a miniature duplicate of your display. When you move your fingertip across the pad, the cursor on the screen will move simultaneously in the same direction. When your finger reaches the edge of the pad, lift your finger and replace it on a proper location of the touchpad.
- **Scrolling Right/Left and Up/Down:** When you are in a document, the touchpad's scrolling function allows you to scroll the document without moving the pointer away from your work. By simply sliding your finger up/down at the right edge of the touchpad, the contents of the current document will scroll vertically; when sliding your finger right/left at the bottom edge of the touchpad, the contents of the current document will scroll horizontally. That is, you can scroll no matter where the pointer happens to be.
- **Point and Click:** When you have moved and placed the cursor over an icon, a menu item or a command that you want to execute, simply tap slightly on the touchpad or press the left button to select. This procedure, called as "point and click", is the basics of operating your Notebook PC. Unlike the traditional pointing device such as the mouse, the whole touchpad can act as a left button, so that your each tap on the touchpad is equivalent to pressing the left button. Tapping twice more rapidly on the touchpad is to execute a "double-click".
- **Drag and Drop:** You can move files or objects in your computer by using "drag-and-drop". To do so, place the cursor on the desired item and slightly tap twice on the touchpad, and then keep your fingertip in contact with the touchpad on the second tap. Now, you can drag the selected item to the desired location by moving your finger on the touchpad, and then lift your finger from the touchpad to drop the item into place. Alternately, you can press and hold the left button when you select a item, and then move your finger to the desired location; finally, release the left button to finish the drag-and-drop operation.



1. *Do not place heavy/sharp objects on the touchpad; do not scratch the surface of touchpad.*
2. *Clean the touchpad with soft dry cloth regularly to prevent the dust and liquids on it.*
3. *When using the touchpad, keep your fingers and the touchpad clean and dry for optimal performance. Do not use excessive force when tapping on the touchpad.*



Averatec reminds you

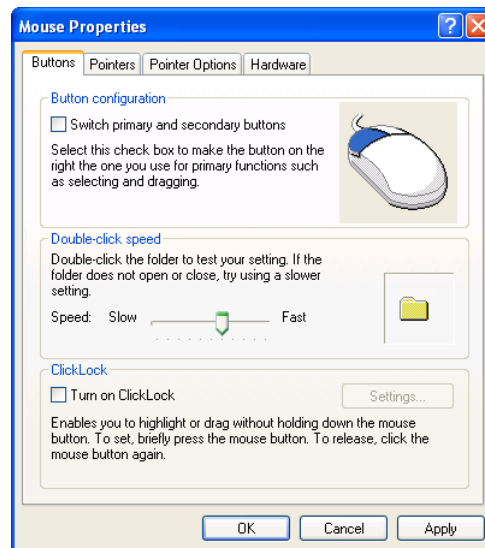
6200 Series Notebook PC



➔ Configuring the Touchpad

You can customize the pointing device to meet your personal needs. For example, if you are a left-hand user, you may want to swap the functions of the two buttons. In addition, you can change the size, shape, moving speed, and other advanced features of the cursor on the screen.

To configure the touchpad, you can use the standard Microsoft or IBM PS/2 driver in your Windows operating system. The **Mouse Properties in Control Panel** allows you to change the configuration.



Mouse Properties window

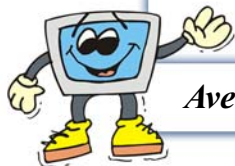


2.4 Using the Optical Storage

Your computer is equipped with an optical storage device, which is known as the CD/DVD-ROM, CD-RW, DVD Combo and DVD Dual drive. The actual device installed in your computer depends on the model you purchased.

- **CD-ROM Drive:** allows you to read CD disks, including audio CDs, and CD-R/RW disks.
- **DVD-ROM Drive:** allows you to read DVD disks and CD disks, including movie DVDs, audio CDs, and CD-R/RW disks.
- **CD-RW Drive:** allows you to create the CD-R/RW disks containing your own contents.
- **DVD Combo Drive:** a cost-effective solution that can work both as a DVD-ROM drive and a CD-RW drive.
- **DVD Dual Drive:** a dual format recorder, allowing you to record both the -R/RW and +R/RW formats.

1. *The optical storage devices are classified as a Class 1 Laser products. Use of controls or adjustments or performance of procedures other than those specified herein may result in hazardous radiation exposure.*
2. *Do not touch the lens inside the drive.*



Averatec reminds you

6200 Series Notebook PC



➔ Inserting the CD

The following instruction describes the general procedure when operating the optical storage device, including the DVD-ROM drive.

1. Confirm that the computer is turned on.
2. Press the Eject Button on the drive's panel (❶), and the CD tray will slide out partially. Then, gently pull the tray out until fully extended (❷).
3. Place your CD in the tray with its label facing up. Slightly press the center of the CD to secure it into place (❸).
4. Push the tray back into the drive.





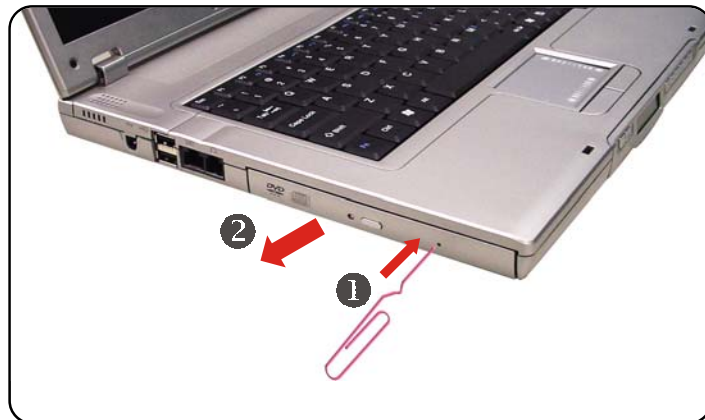
➔ Removing the CD

1. Confirm that the computer is turned on.
2. Press the Eject Button on the drive's panel, and the CD tray will slide out partially. Then, gently pull the tray out until fully extended.
3. Hold the CD by its edge with your fingers, and then lift it up from the tray.
4. Push the tray back into the drive.

➔ Releasing the CD Manually

If unfortunately you can not release the CD tray by pressing the Eject Button, you can release it manually:

1. Confirm that the computer is turned off.
2. Insert a pointed object (e.g. a straightened clip) into the **Emergency Eject Hole (1)**, and the CD tray will slide out partially. Then, gently pull the tray out until fully extended (2).
3. Remove the CD, and then push the tray back into the drive.



6200 Series Notebook PC

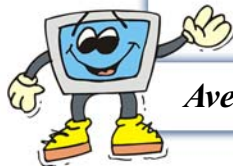


2.5 The Hard Disk Drive

Your computer is equipped with a 2.5-inch IDE (Integrated Drive Electronics) hard disk drive. The hard disk drive is a storage device with much higher speed and larger capacity than other storage devices, such as the floppy disk drive and optical storage devices. Therefore, it is usually used to install the operating system and software applications.

The hard disk drive is a non-removable storage device in your computer. However, you can upgrade it by replacing a larger capacity hard disk drive. To do so, please refer to *Upgrading Your System* in Chapter 6.

1. *To avoid unexpected data loss in your system, please backup your critical files regularly.*
2. *Do not turn off the computer when the Hard Disk In-use LED is on.*
3. *Do not remove or install the hard disk drive when the computer is turned on. The replacement of hard disk drive should be done by an authorized retailer or service representative.*



Averatec reminds you



2.6 Using the Video Function

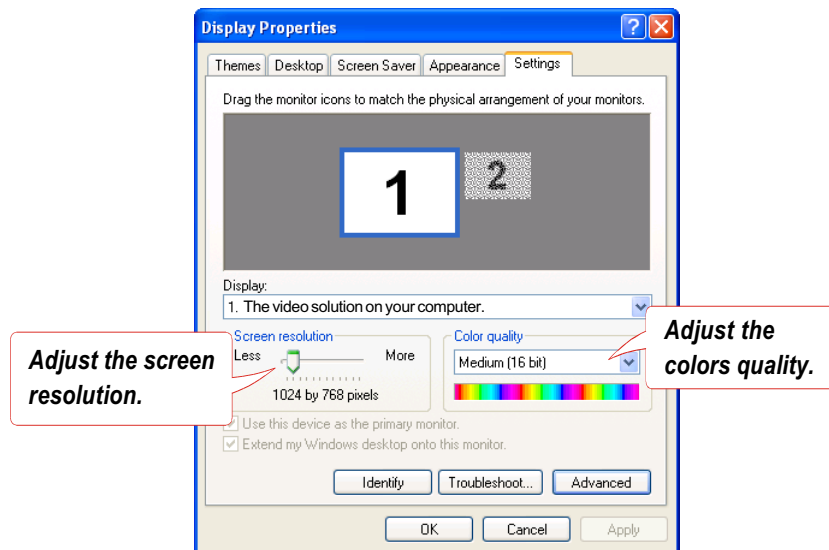


Configuring the Display Settings

Your Notebook PC has been set to a default resolution and colors when shipping: Now, you can change the settings to meet your needs through the operating system.

Changing the Resolution and Colors Quality

1. Click **Start** from the taskbar, and select **Control Panel** to open the Control Panel window.
2. In the Control Panel, double-click the **Display** item to open the Display Properties window.
3. In the **Screen Resolution** field, move the slide bar to adjust the screen resolution; in the **Color Quality** field, select the desired colors setting from the pull-down menu.



6200 Series Notebook PC



Changing the Display Output Device

1. Click **Start** from the taskbar, and select **Control Panel** to open the Control Panel window.
2. Double-click the **Display** item to open the Display Properties window.
3. Click the **Advanced** button to bring up the following window that contains more settings.
4. Under the **Displays** tab, if you have connected the external display device, such as the CRT monitor or TV, simply select the one you want to use and click **OK**. (You can also use the hot key **[Fn]+[F2]** on the keyboard to switch the display output device.)



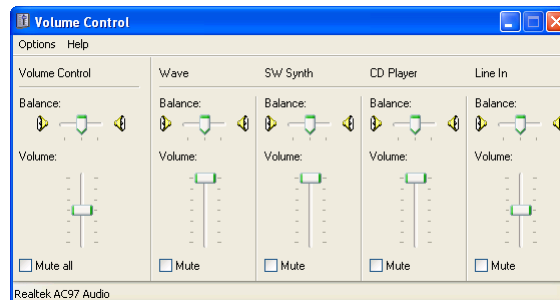
2.7 Using the Audio Function

Connecting Audio Devices

Your Notebook PC is equipped with an audio subsystem. However, you can also connect external audio devices for a better audio quality when enjoying your music and movie on the computer. The audio-out jack allows you to connect the speakers and headphones; the microphone jack allows you to connect the external microphone.

Volume Control

Double-click the **Volume Control** icon on the taskbar, and the Master Volume dialog box will appear as shown below. You can move the slide bar to adjust the volume.



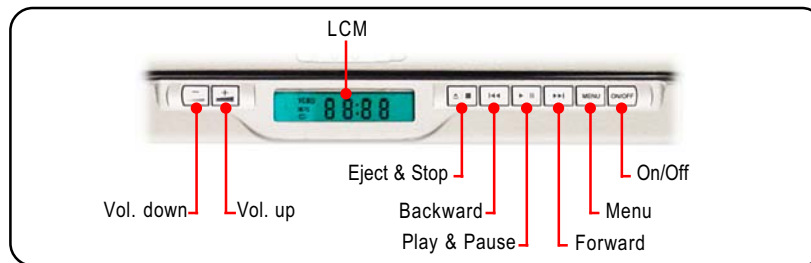
6200 Series Notebook PC



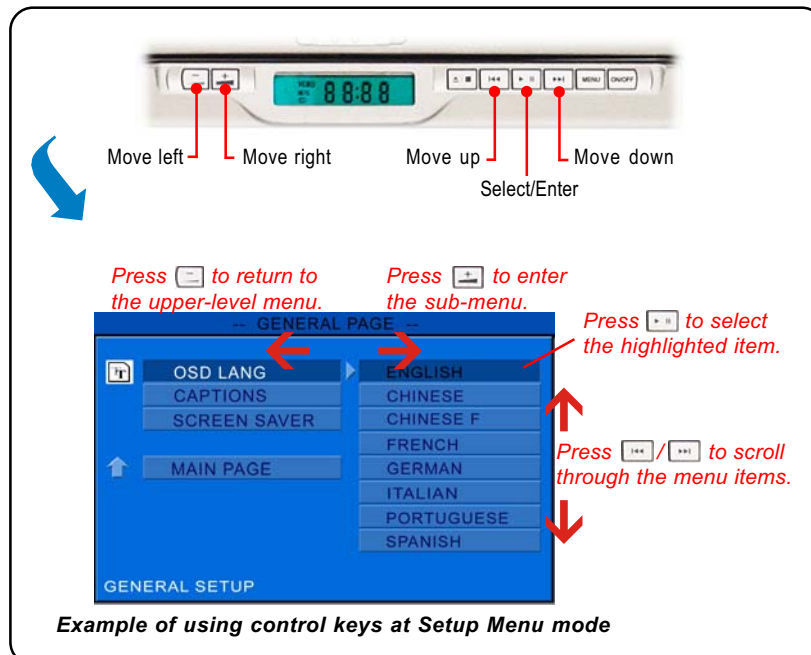
2.8 Direct Play Function

Control Key Function

Control Key function at Direct Play mode



Control Key function at Setup Menu mode





➔ Key Definition

🔍 **Remote Controller** : Next CH+ turn to FW, and Pre CH- turn to RW, by pressing the button over 1 second.

MENU	↑	POWER
00	01	02
←	PLAY/PAUSE	→
03	04	05
CH-/<<	↓	CH+/>>
06	07	08
STOP	AUDIO	VOL+
09	0A	0B
REPEAT		VOL-
0C		0D

🔍 **Remote control key define in any mode**

ITEM	AV_MODE (DVD)	MENU		PC
		DVD	LCD	
PLAY/PAUSE	PLAY/PAUSE	OK/ENTER	OK	PLAY
STOP	STOP/EJECT	---	---	STOP
<<	CH-/REWIND	---	---	CH-
>>	CH+/FORWARD	---	---	CH+
VOL+	VOL+	---	---	VOL+
VOL-	VOL-	---	---	VOL-
↑	↑	↑	↑	---
↓	↓	↓	↓	---
←	←	←	← /-	---
→	→	→	→ /+	---
VOCAL	VOCAL	---	---	MUTE
MENU	MENU	MENU	MENU	MEDIA
POWER	POWER	POWER	POWER	---

6200 Series Notebook PC



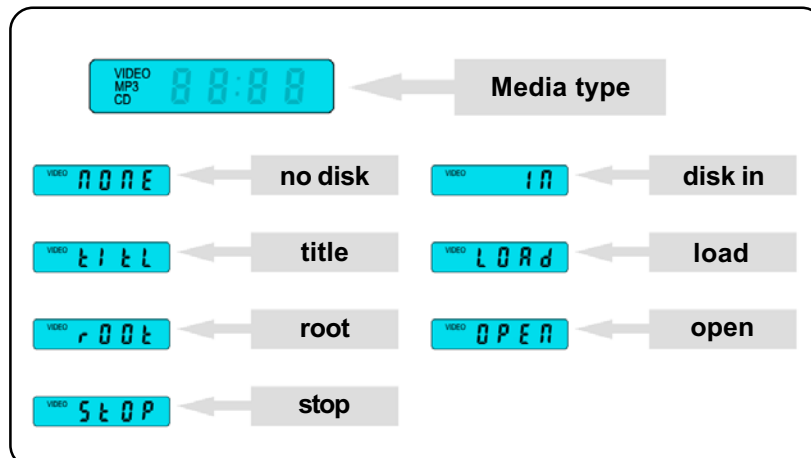
Director play key define

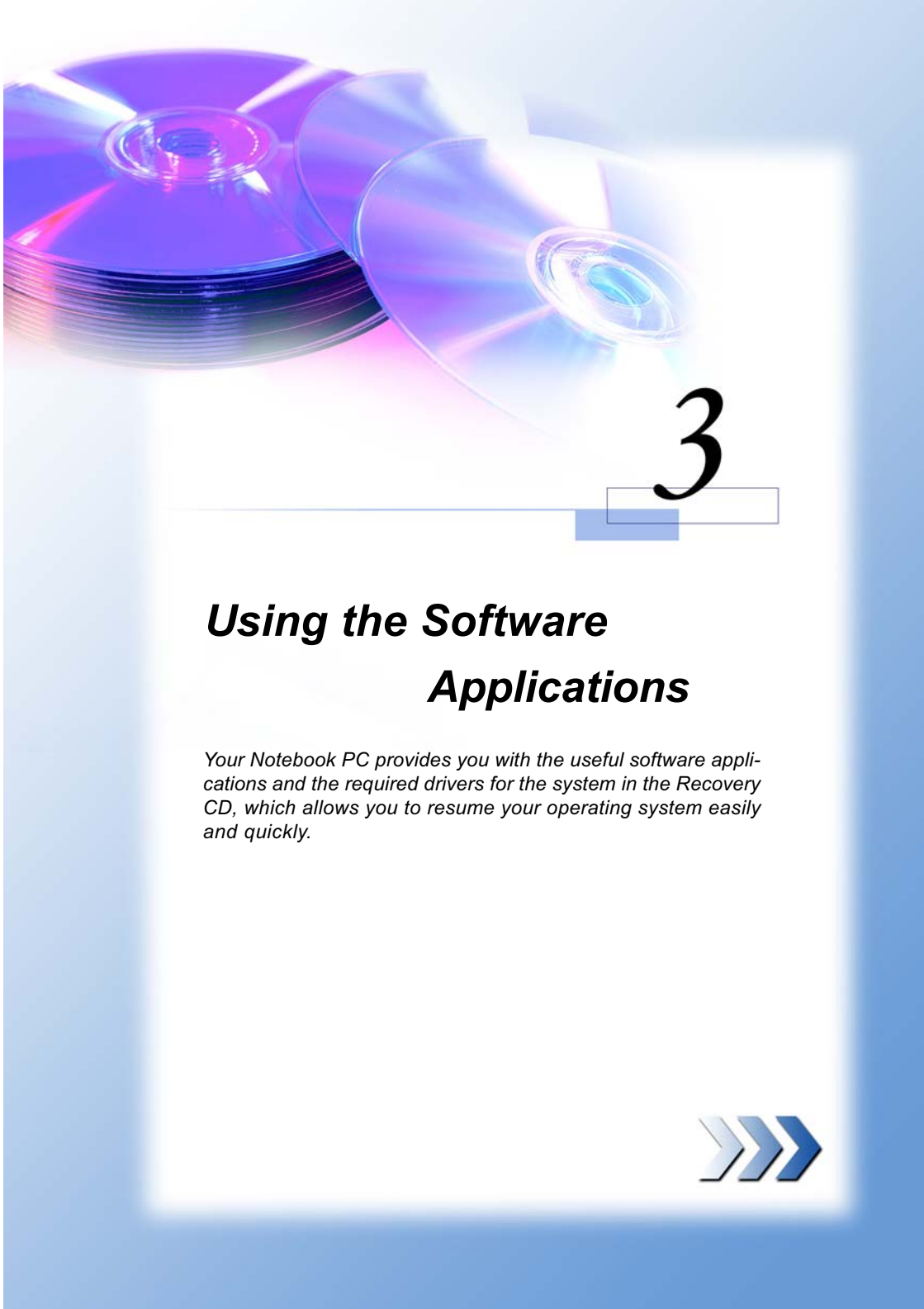
VOL-	VOL+	LCM	STOP	CH-	PLAY/ PAUSE	CH+	MENU	POWER
- / ←	+ / →			↑		↓		

Direct play key define in any mode

ITEM	AV_MODE (DVD)	MENU		PC
		DVD	LCD	
PLAY/PAUSE	PLAY/PAUSE	OK/ENTER	OK	PLAY/PAUSE
STOP/EJECT	STOP/EJECT	---	---	STOP/EJECT
CH-	CH-	↑	↑	CH-
CH+	CH+	↓	↓	CH+
VOL+	VOL+	←	+	VOL+
VOL-	VOL-	→	-	VOL-
MENU	MENU	MENU	MENU	MEDIA
POWER	POWER	POWER	POWER	---

Message on the LCM





3

Using the Software Applications

Your Notebook PC provides you with the useful software applications and the required drivers for the system in the Recovery CD, which allows you to resume your operating system easily and quickly.





3.1 Using the Recovery CD

The Recovery CD is a compact disk that records the sources of operating system and important data and can be used to restore the hard disk to its original state. When the operating system of your computer is damaged and can not work properly any more, you can use the Recovery CD to resume the system in its original state.



Resuming the Operating System

To resume the operating system from the Recovery CD:

1. Connect the AC adapter and turn on the computer.
2. Insert the Recovery CD into the CD/DVD-ROM drive.
3. Press the **[Del]** key on the keyboard to enter the BIOS Setup Utility when the system boots up.
4. In the BIOS Setup Utility, set the CD/DVD-ROM drive as the first boot device (see *Boot Menu* in Chapter 5). Then, save the changed setting and exit the BIOS Setup Utility to continue the booting procedure.
5. Choose to restore the operating system from the Recovery CD when prompted. Then, follow the on-screen instructions to complete the procedures. The system will reboot automatically when completed.
6. The system will resume the factory default settings after reboot.
7. After resuming the operating system, you should reactivate the operating system as like the first time to use the computer (see *Activating Your System* later in this chapter).



The Recovery CD (x3) includes:

- **Drivers**
provides the required drivers for the system.
- **Utility**
contains the powerful utilities that can maximizing your experience in operating the computer.
- **Software Applications**
MS Works 7.0; CyberLink DVD Solution; Norton AntiVirus 2004; Acrobat Reader 6.0; Windows Media Player 9.0; Quick Time 6.0; NetZero Platinum.
- **User Manual**

6200 Series Notebook PC



3.2 Activating Your System

Before using your computer, you need to activate the Windows XP operating system by the following steps.

1. Welcome to Microsoft Windows.

After the computer is ready for the pre-use configuration, the screen will show the Welcome to Microsoft Windows message. Click **Next** to continue.

2. What time zone are you in?

The computer will ask your time zone to set your computer's clock. In the Time Zone list, click the time zone you are in. For example, select (GMT-05:00) Eastern time (US & Canada) if you live in Boston. Mark the check box if you want to automatically adjust clock for day light saving time. Click **Next**.

3. The End User License Agreement.

The End User License Agreement (EULA) describes your legal rights regarding your use of Windows. Please note that you must accept this agreement to continue to use Windows. Check the **Yes, I accept** item and click **Next** to proceed to the next step.

4. What's your computer's name?

Choose a name for your PC that will help you identify it on your home network, if you have one. In order for your computer to appear on a network, its name cannot be longer than 15 characters or contain any spaces or characters aside from the numbers 0-9, the letters A-Z and a-z, and hyphens. You can also give your computer a friendly description which is optional. Click **Next** to continue.

5. How will this computer connect to the Internet?

Choose one of the options to connect this computer to the Internet. Click **Next**.

6. Do you want to set up Internet access now?

You've finished setting up Windows and your computer is now ready to use. You can click **Yes** to set up your computer to connect to the Internet now, or click **No** to set up later. Click **Next** to continue.

7. Thank you!

Congratulations, you're ready to go! Click **Finish** to exit.

8. The Windows Login dialog box appears on the screen, click **OK** to login.

9. That's right. You can use your Notebook PC now.



4

Power Management

This chapter tells you how to manage the power effectively, in order to maintain the longest battery life and increase the productivity when you are using the computer.



6200 Series Notebook PC



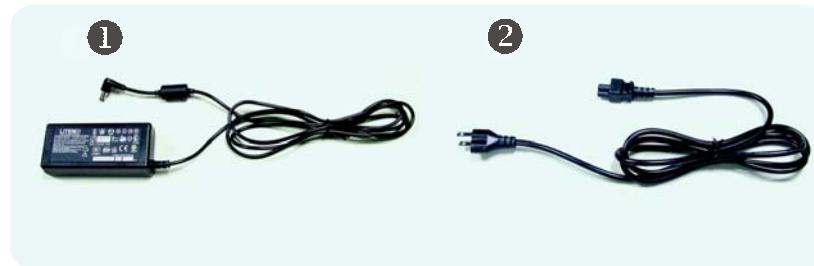
4.1 Introduction to the Power Source

Your Notebook PC provides a universal AC adapter and a high-performance Li-ion battery in the package, and it can operate either on the battery's power or AC power.

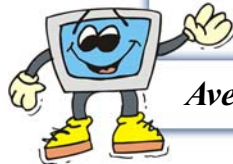


The AC Adapter

The AC adapter included in your Notebook PC is a universal AC adapter that can operate on any voltage ranging from 100~240V AC. This allows you to use your computer at any place when traveling. The AC adapter is used as a converter that transfers the alternating current (AC) to direct current (DC), to supply power to your computer. Also, it can charge the battery pack when connected. The AC adapter consists of two parts: the adapter (❶) and the power cord (❷).



1. *The AC adapter included in the package is correct for your Notebook PC; using other adapter model may damage the computer or other devices on the computer.*
2. *When unplugging the power cord, always hold the connector part of the cord, never pull the cord.*





Averatec reminds you

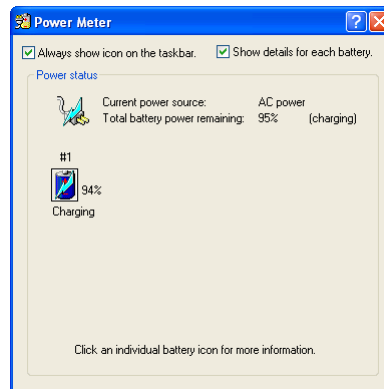


➔ The Battery Pack

The rechargeable Li-ion battery pack is an internal power source of the computer. A fully charged battery pack can supply power to the computer up to 2.5 hours, depending on the actual use of your computer.

🔍 Charging the Battery

The battery pack can be charged while it is installed in the Notebook PC. Connect the AC adapter to the computer, and it starts to charge the battery automatically. Please charge your battery in a normal temperature environment, ranging from 0°C (32°F) to 50°C (122°F). If the temperature is higher than 60°C (140°F), it will stop charging to protect the battery pack. After the temperature is down to 50°C (122°F), it resumes charging automatically. Alternately, you can check the charging status through the Power Meter in Windows. The Power Meter icon is displayed on the taskbar as  or , depending on the current power source. Double-click the icon to bring up the Power Meter window, which contains the related information for your reference.



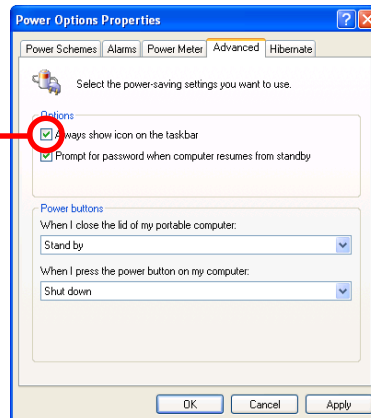
6200 Series Notebook PC



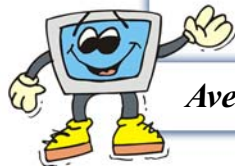
If the Power Meter icon does not appear on the taskbar, you can configure the setting through **Start** menu.

1. Click **Start** and select **Control Panel** to open the Control Panel window. Then, click the **Performance and Maintenance** item.
2. In the Performance and Maintenance window, click the **Power Options** item to open the Power Option Properties window.
3. Under the **Advanced** tab, check the **Always show icon on the taskbar** option and click **OK**.

Check this option



1. *The charging time depends on the system mode. When the computer is turned on, it will take a longer time (3~4 hours) to have the battery fully charged.*
2. *The Power Meter only provides an estimated value of the battery power. The operating time allowed depends on the actual use of your computer.*
3. *For more instructions on using and caring the battery pack, please refer to Taking Care of Your Computer in Chapter 7.*



Averatec reminds you

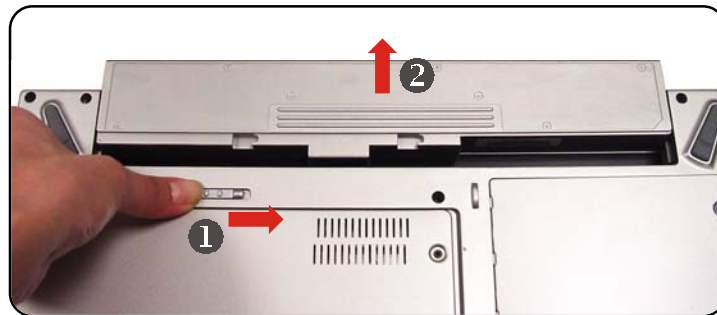


Q Changing the Battery Pack

You can purchase an additional battery pack from your local dealer, so that you can use it as a spare when traveling.

To remove the battery pack:

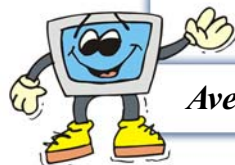
1. Confirm that the computer is turned off.
2. Locate the Battery Unlock Button on the rear side of the computer.
3. Push the Unlock Button upwards (❶).
4. Slide the battery cover outwards (❷).
5. Pull out the battery pack from the compartment.



Q Replacing the battery pack

1. Insert the battery pack into the compartment.
2. Slide the battery cover into place and then push downwards to secure the battery pack.

1. *Do not try to disassemble the battery pack.*
2. *Please follow your local laws and regulations to dump your used battery pack.*



Averatec reminds you



4.2 Managing the Power

The Windows XP operating system supports ACPI (Advanced Configuration and Power Interface), which allows you to manage the computer power easily and efficiently. With the ACPI function, the power can be distributed to different components individually according to their needs. This is helpful to provide you with the maximum battery usage or optimal system performance.



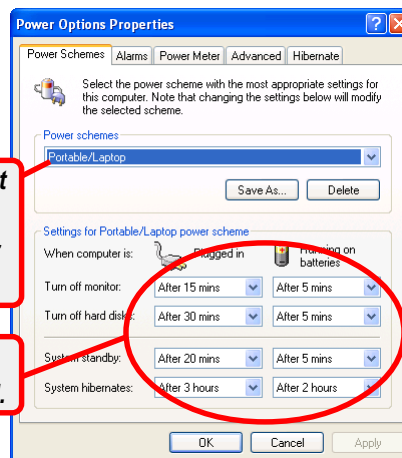
Power Options

In order to maintain sufficient power for optimal system operation, please set up the most appropriate configuration for your computer. The following instructions describe the Power Options setup procedures:

1. Click **Start** from the taskbar, and then select **Control Panel** to open the Control Panel window.
2. Click **Performance and Maintenance**.
3. In Performance and Maintenance window, click the **Power Options** item to open the Power Option Properties window.
4. Under the **Power Schemes** tab, you can set up the most appropriate configuration for your computer.

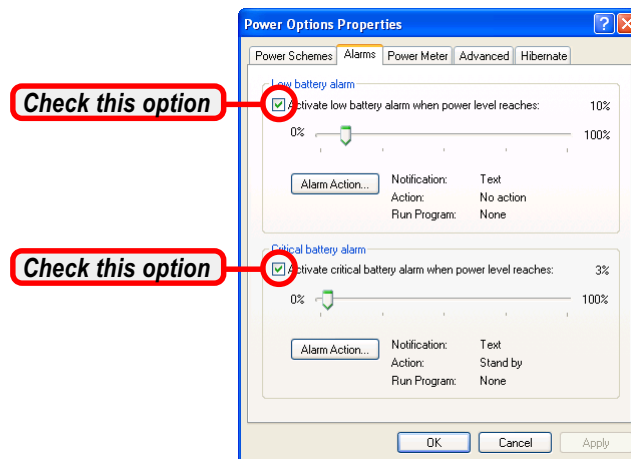
Select one Power Scheme that is best fit to your computer (see the table in page 4-11 for more instructions).

Set up the related settings in these field.



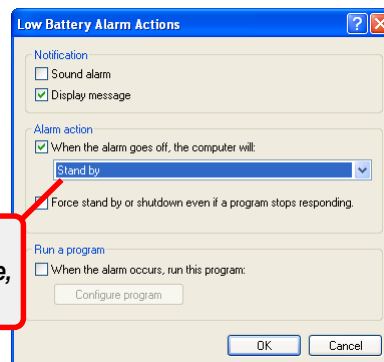


5. Under the **Alarms** tab, you can activate the battery alarm function by checking the options in **Low battery alarm** and **Critical battery alarm** fields. Once activated, adjust the slide bar to set up the low or critical power level (the default setting is 10%).



Click **Alarm Action** within the fields to set up the actions when the power has reached the preset low or critical level.

**Set up the actions:
Stand by, Hibernate,
or Shut down.**

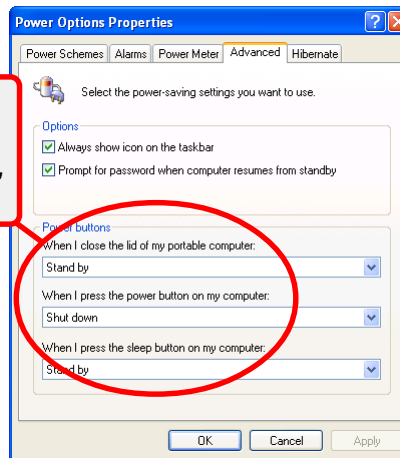


6200 Series Notebook PC

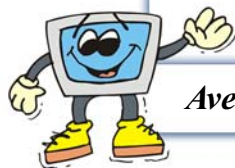


- Under the **Advanced** tab, you can set up the actions when pressing the power button, sleep button, and closing the LCD panel.

Set up the Power buttons' function: Stand by, Hibernate, or Shut down.



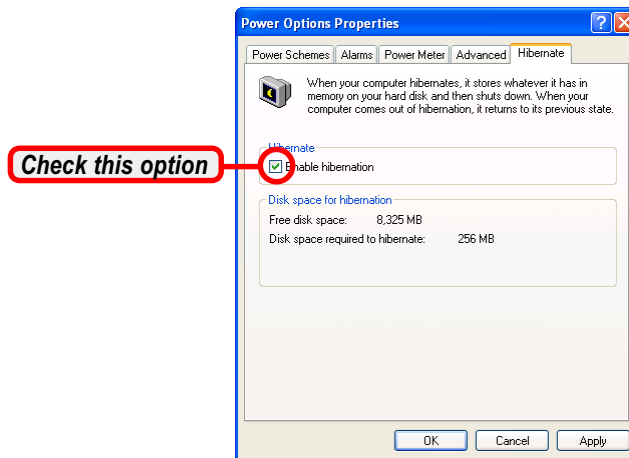
- Pressing **[Fn]+[F12]** allows your computer to enter suspend mode immediately.
- When you are alarmed for the low battery power, please save your data as soon as possible. Also, if available, connect the AC adapter before you continue operating.
- Do not use the card reader or other storage devices when the battery power is low. The access time may be longer than the time you can operate. Otherwise, you may lose your critical data or files.



Averatec reminds you

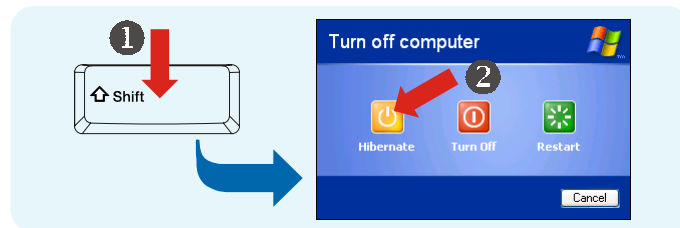


7. Under the **Hibernate** tab, you can activate Hibernation function by checking the **Enable hibernation** option.



Hibernation is a very useful function of the Windows operating system. When you activate this function, the current and programs are saved to the hard disk drive. Therefore, you do not need to close the current applications when you are going to exit the operating system temporarily. The next time you press the Power button, you can resume the previous status when you left off.

To enter the Hibernation mode, click **Start** and select **Turn off Computer**. Press and hold the [**Shift**] key (❶), so that the **Stand By** option changes to **Hibernate**. Click **Hibernate** (❷) to enter the Hibernation mode.





5

BIOS Setup

BIOS (Basic Input/Output System) is a program for setting up the configuration of the computer. To take full advantage of your computer and connected peripheral devices, you should configure the system through BIOS Setup. This chapter provides the information of BIOS Setup Utility, and guides you to configure the system for optimal use.





5.1 Using BIOS Setup Utility



When to Use BIOS Setup?

You may need to run the BIOS Setup when:

- ▶ An error message appears on the screen during the system booting up, and requests you to run SETUP.
- ▶ You want to change the default settings for customized features.
- ▶ You want to reload the default BIOS settings.

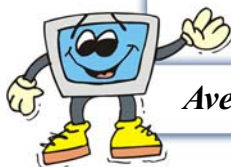


How to Run BIOS Setup?

To run the BIOS Setup Utility, turn on the computer and press the [Del] key during the POST procedure.

If the message disappears before you respond and you still wish to enter Setup, restart the system by turning it OFF and On, or simultaneously pressing [Ctrl]+[Alt]+[Delete] keys to restart.

The screen snaps and setting options in this chapter are for your references only. The actual setting screens and options on your computer may be different because of BIOS update.



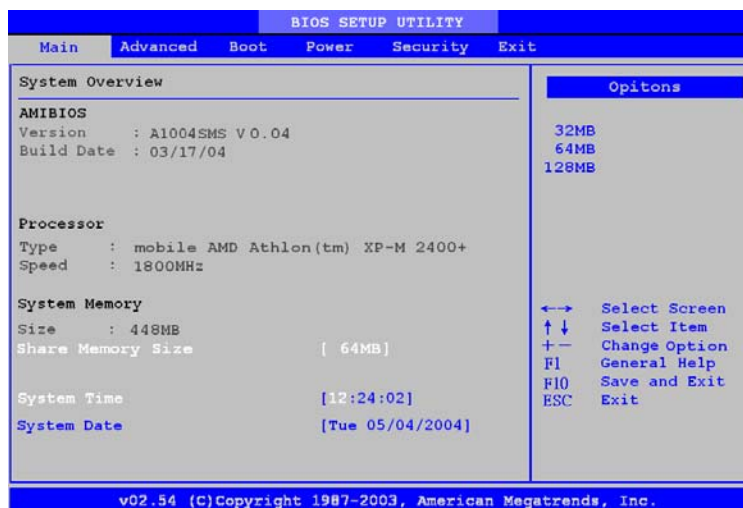
Averatec reminds you

6200 Series Notebook PC



5.2 Main Menu

Once you enter the BIOS Setup Utility, the Main menu will appear on the screen. The Main menu displays the system information, including the basic configuration.



System Overview

Use this menu for basic information of BIOS version and Processor and system configurations, such as time, date etc.

Advanced Settings

Use this menu to set the items of CPU, IDE, SuperIO and USB special enhanced configuration.

Boot Settings

Use this menu to set the Boot functions, including Quick Boot, Quiet Boot, PXE support and 1st Boot Device & 2nd Boot Device sequences.

Power Management Setup

Use this menu to specify your settings for power management, including functions of Wake on LAN, Wake on MDC and RTC Resume.



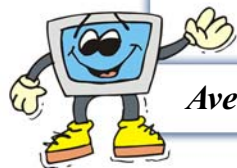
Security Settings

Use this menu to set security password and change the status of using password.

Exit Menu

Use this menu to choose whether saving your changes or not.

Available settings for "1st/2nd Boot Device" vary depending on the bootable devices you have installed. For example, if you did not install a floppy drive, the setting "Floppy" does not show up.

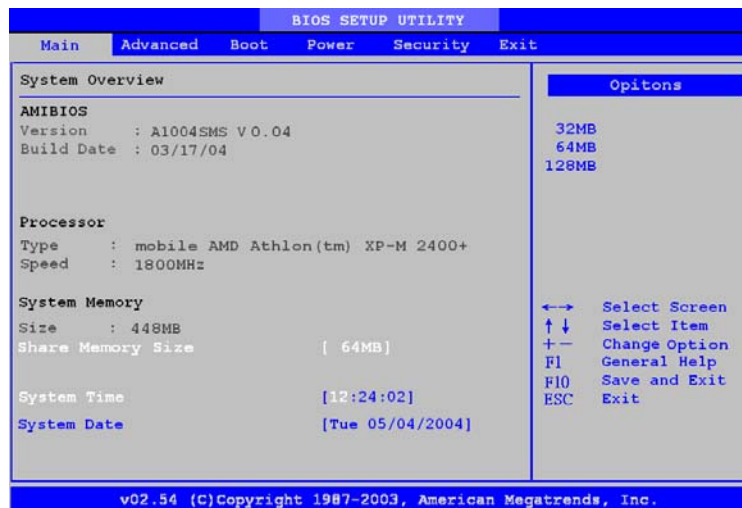


Averatec reminds you

6200 Series Notebook PC



5.3 System Overview



AMIBIOS

This menu first shows AMIBIOS information including Version, Build Date, VGA version and EC version.

Processor

The second field shows Processor Type and Speed.

System Memory

The third field shows information of System Memory Size.

System Time

The status is [hour:minute:second]. Use [ENTER], [TAB] or [SHIFT-TAB] to select a field and use Shift plus [+] to increase values and single [-] to decrease values.

Hour

The value is set from 00 to 23 in 24hr format.

Minute

The value is set from 00 to 59. It won't make any change to the value of hour by increasing or decreasing value of minute.



Second The value is set from 00 to 59. It won't make any change to the value of hour and minute by increasing or decreasing value of second.

System Date

This allows you to set the system date you want (usually the current date). The status is <day> <month> <date> <year>. Use [ENTER], [TAB] or [SHIFT-TAB] to select a field and use Shift plus [+] to increase values and single [-] to decrease values.

Month The month from Jan. through Dec. You can press Shift and "+" to increase the number or key number directly in the field.

Date The date from 1 to 31 can be keyed by numeric function keys.

Year The year can be adjusted by users.

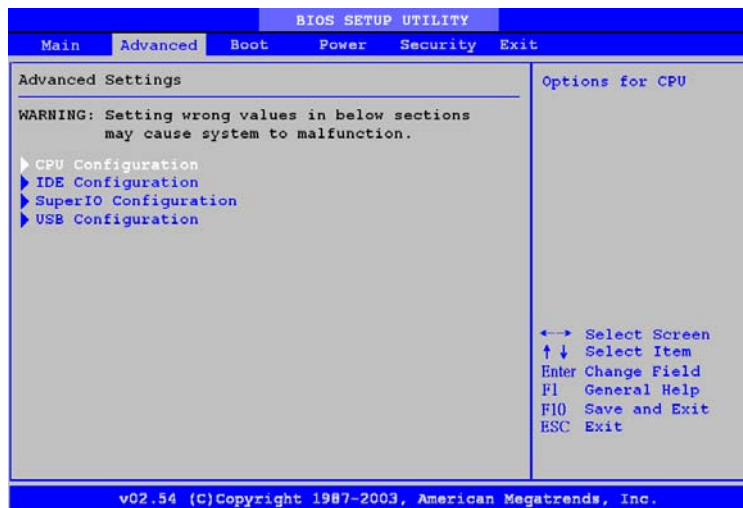
Day Day of the week, from Sun to Sat, the data shows according to what the date you set, automatically calculated by BIOS. Read-only.

6200 Series Notebook PC



5.4 Advanced Settings

The Advanced menu contains CPU Configuration, IDE Configuration, SuperIO Configuration and USB Configuration. First it shows the warning message about malfunction may cause because of your error settings. Therefore, you must be careful before changing any default value.



CPU Configuration

To set options for CPU. Once you enter this field, you will see information about CPU manufacture and specification. Two Functions can be set by users.

ACPI APIC support

Include ACPI APIC table pointer to RSDT pointer list. Press enter on this option to enable or disable the function. The default is [Enabled].

Hyper Threading Function

Enter this option to enable or disable this function. The default is [Disabled].



IDE Configuration

Once you press <Enter>, it will show the screen below:

```

BIOS SETUP UTILITY
Main  Advanced  Security  Boot  Power  Exit

IDE Configuration
└─▶ Primary IDE Master      : [Not Detected]
   Primary IDE Slave      : [Not Detected]

USB Configuration
-----
USB Devices Enabled :
None

Legacy USB Support      [Enabled]

While entering setup,
BIOS auto detects the
presence of IDE
devices. This displays
the status of auto
detection of IDE
devices.

←→ Select Screen
↑↓ Select Item
Enter Go to Sub Screen
F1 General Help
F10 Save and Exit
ESC Exit

v02.54 (C) Copyright 1985-2003, American Megatrends, Inc.

```

Primary IDE Master

It shows information of Primary IDE Master including Device, Vendor, Size, LBA Mode, Block Mode, PIO Mode, Async DMA, Ultra DMA and S.M.A.R.T.

Primary IDE Slave

It shows information of Primary IDE Master including Device, Vendor, Size, LBA Mode, PIO Mode, Async DMA and Ultra DMA.

Hard Disk Write Protect

Disable/Enable device write protection. This will be effective only if device is accessed through BIOS.

USB Devices Enabled

It shows enabled USB Devices if there is at least one enabled. If there is no USB Devices enabled, it will show status by None.

Legacy USB Support

It enables support for legacy USB. There are three options available: [Disabled], [Enabled] and [Auto]. [Auto] disables legacy support if no USB devices are connected.

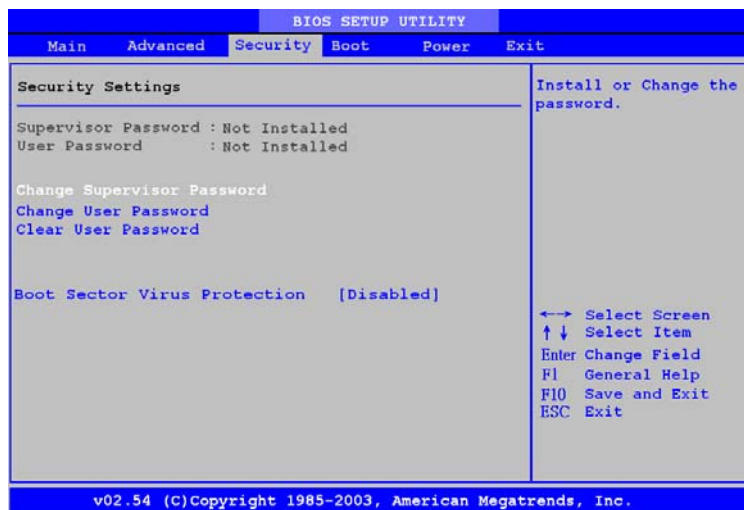
6200 Series Notebook PC



5.5 Security Settings

Security Settings

Press <Enter> and the following sub-menu appears.



It first shows the status of Password Installation. It will show “Not Installed” if there is no password installed.

Change Supervisor Password

To install or change Supervisor Password by enter new password.

Change User Password

To install or change User Password by enter new password.

Clear User Password

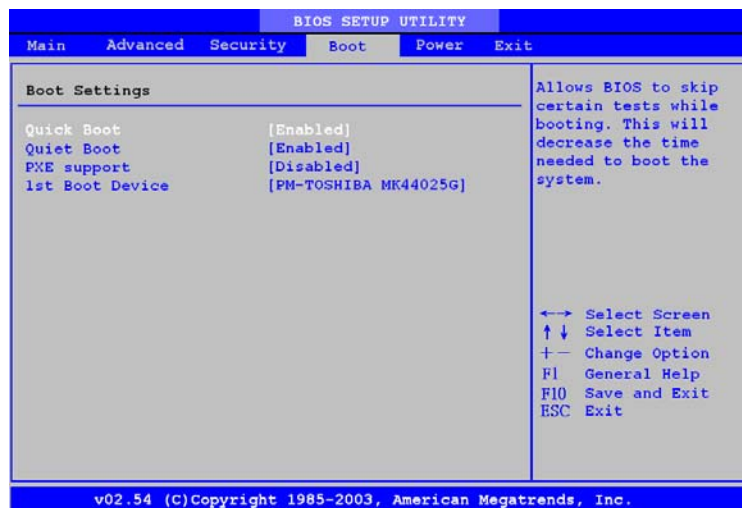
It is a quick way to clear supervisor and user password by two options: [Ok]/[Cancel].



5.6 Boot Settings

Boot Settings

Press <Enter> and the following sub-menu appears.



Quick Boot

It allows BIOS to skip certain tests while booting. It will save time to boot the system. There are two options available: [Disabled] and [Enabled]. Default setting is [Enabled].

Quiet Boot

There are two options available: [Disabled] and [Enabled]. [Disabled] displays normal POST messages. [Enabled] displays OEM Logo Instead of POST messages. Default setting is [Enabled].

PXE support

Select [Enabled] to activate PXE support. Default setting is [Disabled].

1st Boot Device

It specifies the boot sequence from the available devices. There are three options available: [PS-QSI CD-RW/DVD-ROM SBW242B], [PM-TOSHIBA MK40255GAS] and [Disabled]. Default setting is [PM-TOSHIBA MK40255GAS].

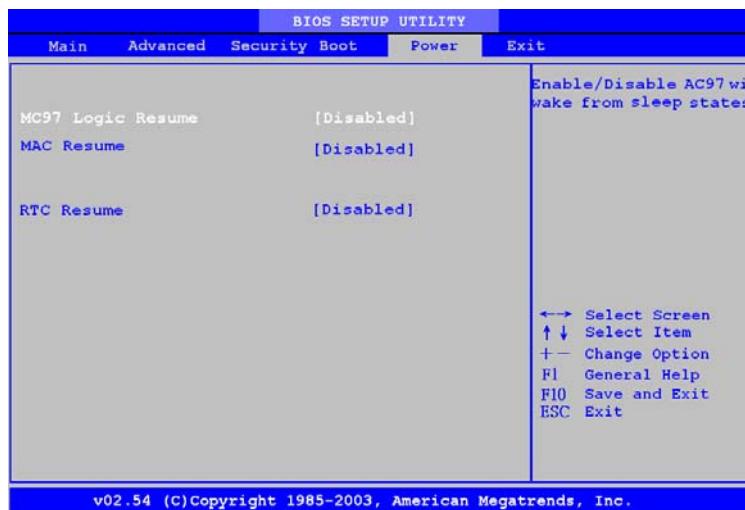
6200 Series Notebook PC



5.7 Power Settings

Power Settings

Press <Enter> and the following sub-menu appears.



Wake on LAN

Wake on Broadcom LAN. There are two options: [Disabled] and [Enabled]. Default setting is [Enabled].

Wake on MDC

There are two options: [Disabled] and [Enabled]. Default setting is [Enabled].

RTC Resume

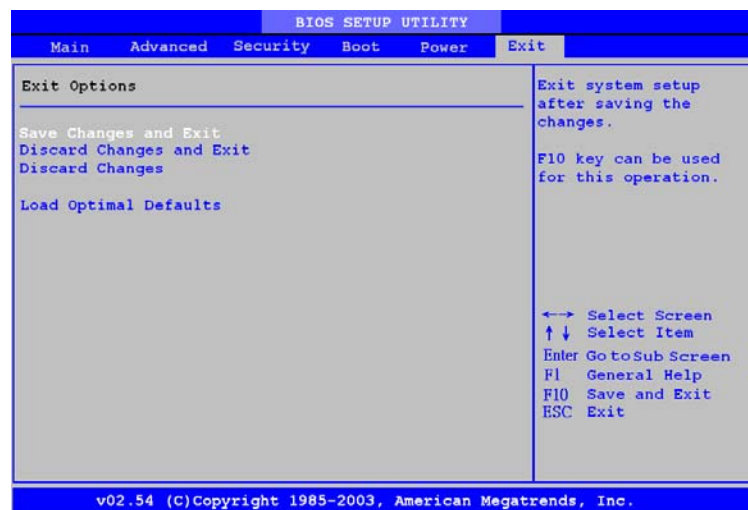
It will Enable/Disable RTC wake from sleep states. Default setting is [Disabled].



5.8 Exit Options

Exit Options

Press <Enter> and the following sub-menu appears.



Save Changes and Exit

Exit system with saving the changes.

Discard Changes and Exit

Exit system setup without saving any change. Press Enter or ESC can set up this option.

Discard Changes

Discard Changes without exiting. It is used when you need to change something else.

Load Optimal Defaults

Turn setting all back to defaults.



6

Expanding and Upgrading

You can expand the capabilities of your Notebook PC and upgrade your system for your necessary. This chapter introduces the installation of optional devices/components for your Notebook PC.

6200 Series Notebook PC

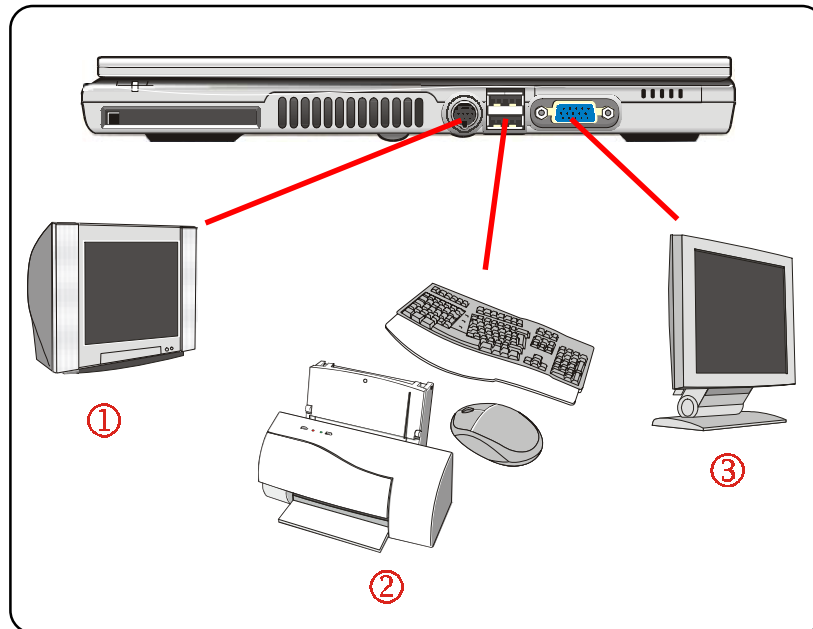


6.1 Connecting the External Devices

The I/O (input/output) ports on the rear panel of the computer allow you to connect peripheral devices. For the information of these I/O ports, please refer to *Quick Components Guide* in Chapter 1.



Connecting the Peripheral Devices





① Connecting the TV (PC only)

The S-Video connector of your computer allows you to use a TV to display the computer images for your specific purpose, such as enjoying your DVD movies. To connect a TV, you will need the S-Video cable (not included). Then, you can configure the display settings as described in the section *Using the Video Function* of Chapter 2.

② Connecting the USB Devices

The USB 2.0 ports of your computer allow you to connect many peripheral devices, such as the mouse, keyboard, speakers, modem, external hard disk module, printer, and more. The USB-standard interface supports “**plug-and-play**” technology, so that you can connect and remove the USB devices without turning off the computer.

To connect the USB device, simply connect the cable of the device to the USB port of your computer.

③ Connecting the External Monitor

You can connect an external monitor to your computer through the VGA port for a larger view with higher resolution. To connect the monitor:

1. Confirm that the computer is turned off.
2. Plug the monitor's D-type connector into the computer's VGA port.
3. Connect the monitor's power cord, and then turn on the monitor.
4. Turn on the computer, and the monitor should respond by default. If not, you can switch the display mode by pressing **[Fn]+[F2]**. Alternately, you can change the display mode by configuring the settings in **Display Properties** of Windows operating system.

④ Special Feature Introduction

This Notebook PC provide a special feature for user. As long as the battery of this notebook PC is fully charged. The USB ports on this Notebook PC are always on even in power off state. User can use this feature to charge some kind of mobile devices, such as PDA, MP3 player or mobile phone when needed . User need a specific cable for connecting USB port of notebook PC and the device. Please check the device provider for that cable.

6200 Series Notebook PC

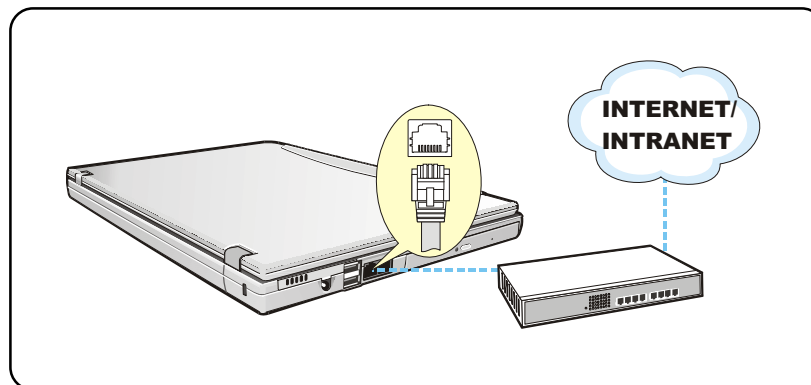


→ Connecting the Communication Devices

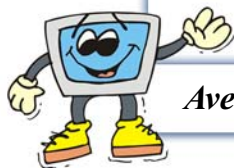
● Using the LAN

The RJ-45 connector of the computer allows you to connect the LAN (local area network) devices, such as a hub, switch, and gateway, to build a network connection. This built-in 10/100 Base-T LAN module supports data transfer rate up to 100Mbps.

The following diagram describes the basic connection in a network environment. For more instructions or detailed steps on connecting to the LAN, please ask your MIS staff or network manager for help.



You are strongly recommended to install the LAN driver included in the software CD of your computer to take full advantage of the LAN feature.



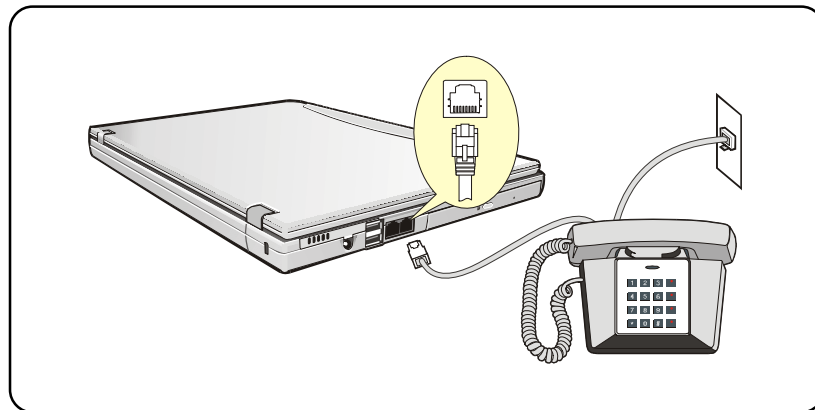
Averatec reminds you



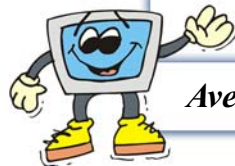
Q Using the Modem

The built-in 56Kbps fax/data modem allows you to use a telephone line to communicate with others, or to dial-up to connect the Internet. It should be noticed that **Cable size has to be at least 26 or above.**

The following diagram provides the basic connection of modem. For more instructions or detailed steps on dialing-up through the modem, please ask your MIS staff or Internet service provider (ISP) for help.



1. To reduce the risk of fire, use only No. 26 AWG or larger telecommunication line cord.
2. You are strongly recommended to install the modem driver included in the software CD of your computer to take full advantage of the modem feature.



Averatec reminds you

6220 Series Notebook PC



→ Installing the PC Card

The PC card slot of your computer allows you to install comprehensive Type-II PC cards that support various functions for your necessary, including the LAN/WLAN card, modem card, and memory card.

The following instruction provides you with a basic installation for the PC card, including how to install and remove it. For more information, please refer to the manual of your PC card.

● Installing the PC card

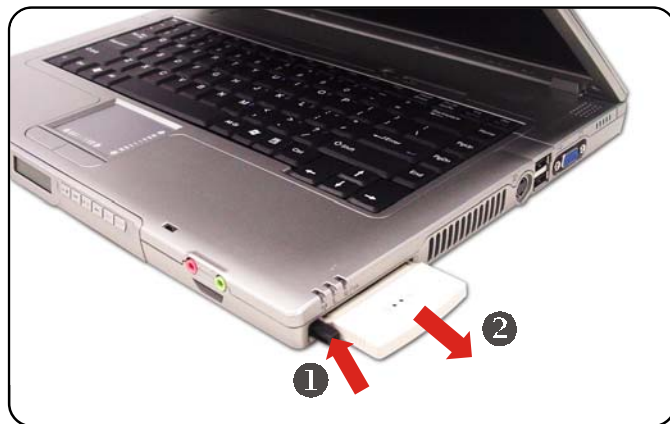
1. Locate the PC card slot on your notebook computer. If there is the dummy card in the slot, remove it first.
2. Insert the PC card into the slot (usually with its label facing up) and push it until it is firmly seated.



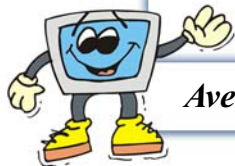


🔍 Removing the PC card

1. Press the Eject Button to make it stretch out.
2. Push the Eject Button (❶) and the PC card will slide out slightly. Then, pull it out of the slot (❷).



1. Do not hold the “golden finger” when installing the PC card; otherwise, it may cause interference or damage to the PC card.
2. Before removing the PC card, you should stop the device in Windows operating system.




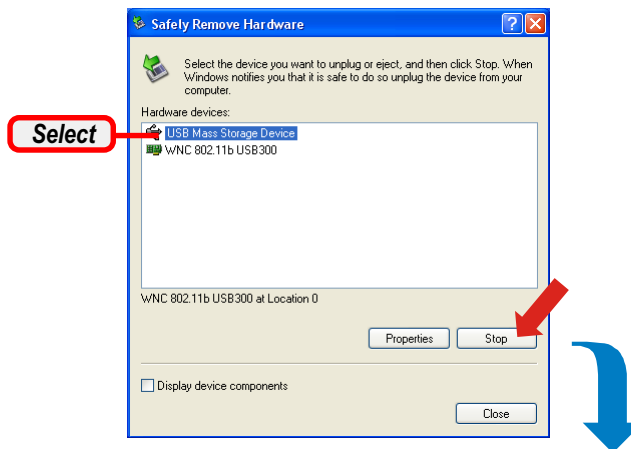
Averatec reminds you

6200 Series Notebook PC



6.2 Safely Remove Hardware

If you connect any peripheral device to your system, the **Safely Remove Hardware** icon () will appear on the taskbar. Double-click the icon to bring up the Safely Remove Hardware dialog box. You can see all connected peripheral devices here. If you want to remove any of the devices, move the cursor to the device and then click **Stop**.



The following dialog box is to confirm the device to be removed. Click **OK** to continue.



You have successfully removed the device. Click **Close** to exit.



6.3 *Upgrading your System*

You can upgrade your Notebook PC through the following ways:

- 1) adding memory to a maximum of 2GB.
- 2) replacing the hard disk drive.
- 3) replacing the CPU.



Caring Your

Notebook PC

To ensure a trouble-free operation and reduce the risk when working, you should take good care of your computer. This chapter provides the basic guidelines to protect your computer and critical data.



6200 Series Notebook PC



7.1 Protecting Your Notebook PC

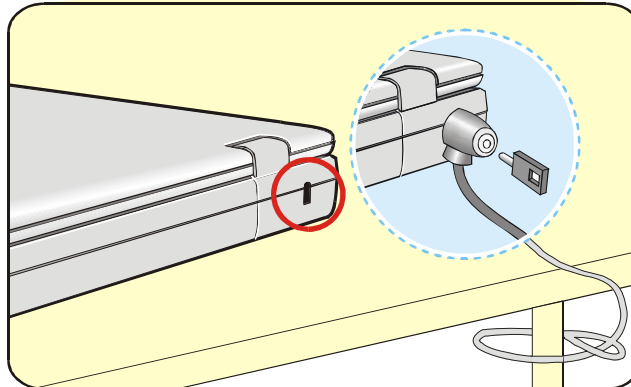
We understand that the Notebook PC is a valuable investment and how important the data stored in your system meant to you. Therefore, we provide the following suggestions to protect your system.



Locking Your Computer

When you use the computer in the public area, you can secure your computer on the immovable object (such as a desk) by connecting a Kensington-compatible lock.

1. Loop the cable around the immovable object.
2. Plug the lock into the Kensington Lock hole of the computer, and lock it up with the key.
3. Keep the key in a safe and personal location.



The Kensington lock is not included in your package; however, it is available in the computer store. It can protect your computer from being stolen.



➔ Setting Up Password

🔍 Power-on Password

You can protect your computer from unauthorized use by setting up a boot password. Once the boot password is set, it will bring up a dialog box requesting for the password whenever the computer is turned on. The boot password is stored in the BIOS. To set up the password, please refer to the instruction in Chapter 5.

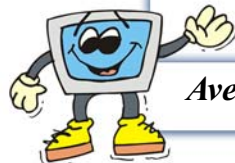


🔍 Operating System Password

In addition to the boot password, you can also set up the password in the operating system, such as the login password and screen saver password. Once the login password is set, it will ask you to enter the user name and password when logging in Windows.

For more information on setting the system password, please refer to the manual or online help of your operating system.

1. Remember the passwords once they are set. If, unfortunately, you forgot the passwords, please contact your local dealer for assistance.
2. You are recommended to set up the password; it can protect your computer from being used by unauthorized users.



Averatec reminds you

6200 Series Notebook PC



➔ Using the Anti-Virus Protection

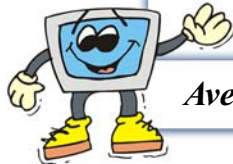
● About Computer Virus

In one word, the computer virus is a program that replicates; therefore, it will need to attach itself to other program files, such as **.exe**, **.com**, **.dll** files. The virus start to wreak havoc within the computer whenever these executable programs execute. The destructive portion of a virus can range from overwriting critical information stored on your hard disk's partition table to scrambling the numbers in your spreadsheets to just taunting you with sounds, pictures, or obnoxious effects.

● Norton AntiVirus 2004

To protect your computer from being attacked by the computer virus, the Norton AntiVirus application is pre-installed in your system. It provides comprehensive and easy to use protection from viruses, hackers, and other Internet-based threats. With its friendly interface, you can quickly become familiar with all the powerful features of the software.

To know more about the computer virus and Norton AntiVirus application, please refer to the document or online help of the software.



Averatec reminds you



7.2 Tips for Traveling

With your Notebook PC, you can use the computer with more versatility, and in more situations than ever before. Empowered by its light weight design and optimized battery life, you can bring it to presentation and meetings whenever and wherever you want.

To better help our frequent-flying users work with their Notebook PCs, we have put up some tips for them to take care of the units.

- Bring the fully charged Notebook PC to meetings for long-time use. If the meeting time is longer than 4 hours, you are recommended to prepare a second battery pack or an AC adapter.
- Store your Notebook PC in a cool and dry place if you can not bring it with you. Long-time exposure to temperature and humidity fluctuation may cause malfunction of the system.
- Carry your Notebook PC as a carry-on luggage. The airport X-ray detector is OK but the handheld metal detector is not acceptable.
- Use power cord and connector that are appropriate for the country to which you are traveling.



7.3 Taking Care of Your Computer

The guidelines provided in this section are the basics to take good care of your computer.



Placing and Operating Your Computer

The guidelines provided in this section are the basics to take good care of your computer.

- Use the computer in a proper environment where the temperature is between 10°C (50°F) and 35°C (95°F) and the humidity not higher than 80%.
- Place the computer on a flat, solid and steady surface of objects.
- DO NOT block the ventilator when operating the computer.
- DO NOT move the computer vigorously when the power is turned on.
- DO NOT place any heavy object on the computer.
- DO NOT scratch the LCD panel by using any sharp object, such as your finger and the pencil.
- Keep the computer away from the electrical appliances, such as the TV, to avoid the interference.



→ Cleaning Your Computer

- TURN OFF the computer when you have to clean it.
- Clean your computer by using a soft, dry cloth ONLY; do not use the alkaline detergent to wipe the exterior of the computer.
- Do not clean the LCD panel by using the alcohol or detergent. Only use the soft, lint-free cloth to wipe the LCD panel gently.
- Dirt, dust and grease will cause the keyboard and touchpad malfunction, you can clean them by using an air compressor or the brush.

→ Using the Battery Pack

Battery Safety Tips

Replacing or handling the battery incorrectly may present a risk of fire or explosion, which could cause serious injury.

- Only replace the main battery pack with the same or equivalent type of battery.
- Do not disassemble, short-circuit, or incinerate batteries or expose them to temperatures above +60°C (+140°F).
- Do not temper with batteries. Keep them away from children.
- Do not use rusty or damaged batteries.
- Dispose of batteries according to local regulations. Check with your local solid waste officials for details about recycling options or for proper disposal in your area.

6200 Series Notebook PC



Conserving Battery Power

Efficient battery power is critical to maintain a normal operation of the system. If the battery power is not managed well, your saved data and customized settings may be lost.

Follow these tips to help optimize battery life and avoid a sudden power loss.

- Suspend system operation if the system will be idle for a while or shorten the Suspend Timer's time period.
- Power off the system if you won't be using it for a period of time.
- Disable unneeded settings or remove idle peripherals to conserve power.
- Connect an AC adapter to the system whenever possible.

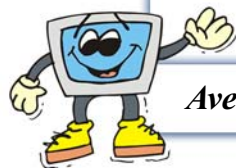
Charging the Battery Pack

The battery pack can be charged while it is installed in the Notebook PC. Please NOTE that the following with respect to charging or changing the battery pack:

- If a charged battery pack is not available, save your work and close all running programs, then shut down the system or Save-to-Disk.
- Plug in an external AC/DC power source.
- You can use the system, suspend system operation, or shut down and turn off the system without interrupting the charging process.
- The battery pack uses Lithium ion battery cells that have no "memory effect." You do not need to discharge the battery pack before you begin charging. However, to optimized the life of your battery pack, we suggest that once a month the power is consumed entirely.
- If you do not use the Notebook PC for a long time, it is suggested to remove the battery pack from your computer. This may be helpful to extend your battery life.
- The actual charging time will be determined by the applications in use.



1. *The charging time depends on the system mode. When the computer is turned on, it will take a longer time (3~4 hours) to have the battery fully charged.*
2. *The Power Meter only provides an estimated value of the battery power. The operating time allowed depends on the actual use of your computer.*
3. *For more instructions on using and caring the battery pack, please refer to Taking Care of Your Computer in Chapter 7.*



Averatec reminds you