

Product Specifications



The Metro *med*DISPENSE Series Advantage

For more than a decade, *med*DISPENSE Series systems have delivered a cost-effective solution to the problem of providing secure, around-the-clock access to medications. The affordable *med*DISPENSE Series systems are about one-third less than other systems.

While Metro offers reliable hardware and user-friendly software, the true advantage of *med*DISPENSE Series are the people. Metro is known in the industry for its high level of support of *med*DISPENSE Series products during installation and quality service by U.S. technicians on call 24/7.

*med*DISPENSE Series' highly flexible base units and auxiliary cabinets are easily configurable to meet your specific needs. By eliminating matrix drawers in favor of single-drawer linear configurations, *med*DISPENSE Series systems eliminate one of the most common safety issues for automated medication dispensing systems.

Systems from Metro's *med*DISPENSE Series can be individually configured to meet your needs, and may include:

- **Base Units** – durable high-capacity *med*DISPENSE Series base units include a touch screen and computer, which controls all primary and auxiliary system components.
- **Auxiliary Units** – available in a variety of sizes and configurations to meet your specific needs.
- **Accessories** – range from barcode scanners to biometric ID scanners and refrigerator units.
- **Software** – the *med*DISPENSE Series system can be interfaced with any HL7-compliant information system, and the intuitive software can be mastered by nurses in about ten minutes.

Base Units



Product	Base 25 Mini Supply	
Unit Dimensions	Inches (W) 21.25 in (D) 22.87 in (H) 54.5 in Keyboard height = 36.75 in	Metric (W) 53.97 cm (D) 58.08 cm (H) 138.43 cm Keyboard height = 93.35 cm
Weight	233 lbs	106 kg
Data Requirements	Standard RJ45 network receptacle (Category 5 cabling – 8 wire, 4 pair)	
Power Requirements	120 volt AC Minimum 10 amp receptacle (red plug preferred). Configurable for 230 volt AC, minimum 5 amp service, use IEC-320 type C13 cord set	
Description	The Base 25 Mini Supply has 25 standard drawers on top and 1.5 cubic feet (.04 cubic meters) of bulk storage space on the bottom of the unit. Each drawer is configurable to store up to six different floor stock medications or one narcotic (for safety purposes) per drawer.	



Product	Base 45	
Unit Dimensions	Inches (W) 21.25 in (D) 22.87 in (H) 54.5 in Keyboard height = 36.75 in	Metric (W) 53.97 cm (D) 58.08 cm (H) 138.43 cm Keyboard height = 93.35 cm
Weight	302 lbs	137 kg
Data Requirements	Standard RJ45 network receptacle (Category 5 cabling – 8 wire, 4 pair)	
Power Requirements	120 volt AC Minimum 10 amp receptacle (red plug preferred). Configurable for 230 volt AC, minimum 5 amp service, use IEC-320 type C13 cord set	
Description	A Base 45 unit contains 45 standard drawers. Each drawer is configurable to store up to six different floor stock medications or one narcotic (for safety purposes) per drawer.	



Product	Base 72	
Unit Dimensions	Inches (W) 32.25 in (D) 22.87 in (H) 54.5 in Keyboard height = 36.75 in	Metric (W) 81.91 cm (D) 58.08 cm (H) 138.43 cm Keyboard height = 93.35 cm
Weight	433 lbs	196 kg
Data Requirements	Standard RJ45 network receptacle (Category 5 cabling – 8 wire, 4 pair)	
Power Requirements	120 volt AC Minimum 10 amp receptacle (red plug preferred). Configurable for 230 volt AC, minimum 5 amp service, use IEC-320 type C13 cord set	
Description	A Base 72 unit contains 72 standard drawers. Each drawer is configurable to store up to six different floor stock medications or one narcotic (for safety purposes) per drawer.	



Product	Controller Unit	
Unit Dimensions	Inches (W) 21.25 in (D) 18.5 in (H) 26.25 in	Metric (W) 53.97 cm (D) 46.99 cm (H) 66.67 cm
Weight	74 lbs	33 kg
Description	Can be used to operate any Auxiliary Unit(s)	

Auxiliary Equipment



Product	Combo Tower	
Unit Dimensions	Top supply cabinet: Inches (W) 21.25 in (D) 20.12 in (H) 68.68 in	Top supply cabinet: Metric (W) 53.97 cm (D) 51.11 cm (H) 174.44 cm
Weight	355 lbs	161 kg
Data Requirements	Not required (direct connectivity to base unit)	
Power Requirements	No external power needed (power supplied by base unit)	
Description	The Combo Tower has 45 drawers on the bottom with the drawer dimensions the same as Base Unit 45. The top 4-shelf supply cabinet has a storage capacity of 5.6 cubic feet (0.16 cubic meters)	



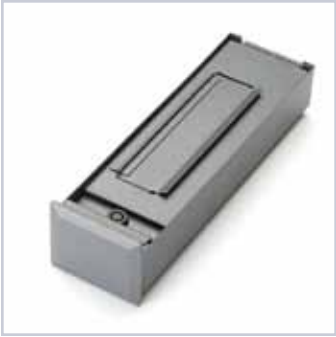
Product	Supply Tower	
Unit Dimensions	Top supply cabinet: Inches (W) 21.25 in (D) 20.12 in (H) 68.68 in	Top supply cabinet: Metric (W) 53.97 cm (D) 51.11 cm (H) 174.44 cm
Weight	203 lbs	92 kg
Data Requirements	Not required (direct connectivity to base unit)	
Power Requirements	No external power needed (power supplied by base unit)	
Description	The Supply Tower has top and bottom doors with six sliding shelves and has a storage capacity of 11.2 cubic feet (0.32 cubic meters)	



Product	Auxiliary Supply	
Unit Dimensions	Inches	Metric
	(W) 21.25 in	(W) 53.97 cm
	(D) 20.12 in	(D) 51.11 cm
	(H) 37.81 in	(H) 96.04 cm
Weight	111 lbs	50 kg
Description	5.6 cubic feet (0.16 cubic meters) of shelved bulk space	



Product	Auxiliary Cabinet	
Unit Dimensions	Inches	Metric
	(W) 21.25 in	(W) 53.97 cm
	(D) 20.12 in	(D) 51.11 cm
	(H) 37.81 in	(H) 96.04 cm
Weight	256 lbs	116 kg
Description	Cabinet with 45 drawers to be used with a base unit	



Product	Standard Width Return Drawers	
Unit Dimensions	Inches	Metric
	(W) 3.5 in	(W) 8.89 cm
	(D) 12 in	(D) 30.48 cm
	(H) 2 in	(H) 5.08 cm
Weight	1.40 lbs	0.64 kg



Product	Double Width Return Drawers	
Unit Dimensions	Inches	Metric
	(W) 7.5 in	(W) 19.05 cm
	(D) 12 in	(D) 30.48 cm
	(H) 2 in	(H) 5.08 cm
Weight	2.25 lbs	1.02 kg

Accessories



Product	Bar Code Reader	
Weight	21.5 ounces	670 grams
Description	Omni-directional scanning bar code reader supports 1D and 2D symbologies. Includes intuitive five-dot laser aiming, utilizes USB, RS-232 and Wedge Emulation	



Product	Finger Print Scanner	
Unit Dimensions	Inches (W) 1.87 in (D) 3.25 in (H) 0.75 in	Metric (W) 4.74 cm (D) 8.25 cm (H) 1.9 cm
Description	Features small form factor with excellent image quality. Includes encrypted fingerprint data and latent and counterfeit print rejection. Works well with dry, moist or rough fingerprints	



Product	Refrigerator Lock	
Unit Dimensions	Inches (W) 3.62 in (D) 8 in (H) 3 in	Metric (W) 9.2 cm (D) 20.3 cm (H) 7.6 cm
Weight	3 lbs	1.3 kg
Other	This lock can be cabled to base units and connected to customer-supplied refrigerators, or other items such as cabinets	

L07-010

© 2009 InterMetro Industries Corporation. All rights reserved.
Metro medDISPENSE Series is a trademark of InterMetro Industries Corporation. The Emerson logo is a trademark and a service mark of Emerson Electric Co. All company and product names are trademarks of their respective company.



(800) 992-1776
www.metro.com/med-dispense



EMERSON. CONSIDER IT SOLVED.™