

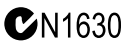





# **PLATFORM-M+**

MIDI/Audio control surface with motorized faders



User manual



	<p><b>CAUTION</b></p> <p>RISK OF ELECTRIC SHOCK DO NOT OPEN RISQUE DE CHOC ELECTRIQUE NE PAS OUVRIR</p> <p>CAUTION: TO REDUCE THE RISK OF ELECTRIC SHOCK DO NOT REMOVE COVER (OR BACK) NO USER-SERVICEABLE PARTS INSIDE REFER SERVICING TO QUALIFIED PERSONNEL</p> <p>ATTENTION: POUR EVITER LES RISQUES DE CHOC ELECTRIQUE: NE PAS ENLEVER LE COUVERCLE. AUCUN ENTRETIEN DE PIECES INTERIEURES PAR L'USAGER. CONFIER L'ENTRETIEN AU PERSONNEL QUALIFIE.</p> <p>AVIS: POUR EVITER LES RISQUES D'INCENDIE OU D'ELECTROCUTION, N'EXPOSEZ PAS CET ARTICLE A LA PLUIE OU A L'HUMIDITE</p>		
			<p>The lightning flash with arrowhead symbol within an equilateral triangle is intended to alert the user to the presence of uninsulated dangerous voltage within the product's enclosure, that may be of sufficient magnitude to electric shock to persons. Le symbol clair avec point de flèche à l'intérieur d'un triangle équilatéral est utilisé pour avertir l'utilisateur de la présence à l'intérieur du coffret de voltage dangereux non isolé d'ampleur suffisante.</p> <p>The exclamation point within an equilateral triangle is intended to alert the user of the presence of important operating and maintenance (servicing) instructions in the literature accompanying the appliance. Le point d'exclamation à l'intérieur d'un triangle équilatéral est employé pour avertir les utilisateurs de la présence d'instructions importantes pour le fonctionnement et l'entretien (service) dans le livret d'instruction accompagnant l'appareil.</p>

## ***Important Safety Instructions***

1. Read this manual thoroughly before using this unit.
2. Keep this manual for future reference.
3. Take notice of and comply with all warnings included in the user's manual or indicated on the appliance.
4. Follow all instructions included in this manual.
5. Do not expose this unit to rain or moisture. Avoid having water or other liquids spilled on this unit.
6. When cleaning the cabinet or other parts of this appliance, use only a dry or slightly damp soft cloth.
7. Do not block any ventilation openings or interfere with the proper ventilation of this unit. Install in accordance with the manufacturer's instructions.
8. Do not use or store near any heat sources such as radiators, heat registers, stoves, or other heat-producing appliances.
9. Do not interfere with the safety purpose of the polarized or grounding-type plug. A polarized plug has two blades with one wider than the other. A grounding-type plug has two blades and a third grounding prong. These are designated for your safety. If the provided plug does not fit into your outlet, consult an electrician.
10. Protect the power cord from being walked on or otherwise damaged by items placed on or against them. Particular attention should be given to the plugs, receptacles, and the point where the cord exits the appliance.
11. To avoid the risk of electrical shock, do not touch any exposed wiring while the unit is in operation.
12. Only use attachments/accessories specified by the manufacturer.
13. Unplug this unit and all connected electrical equipment during lightning storms or when left unused a long period of time.
14. Refer all servicing to qualified service personnel. Servicing is required when the appliance has been damaged in any way or fails to operate normally.

**WARNING: To reduce the risk of fire or electric shock, do not expose this unit to rain or moisture**

# Contents

Introduction .....	4
What's in the package? .....	4
Features .....	5
Front Panel Layout .....	6
Side Panel Layout .....	8
Getting Started .....	9
Connecting Your Platform M* Controller .....	9
(Expander ~ use with Platform X*) .....	10
Cubase .....	13
Ableton Live .....	15
Logic Pro .....	16
Samplitude .....	18
Pro Tools .....	20
(Standalone) .....	22
Cubase .....	22
Nuendo .....	23
Logic Pro .....	24
Samplitude .....	25
Bitwig .....	27
Reason .....	28
Reaper .....	29
Studio One .....	30
Ableton Live .....	31
Pro Tools .....	32
iMap™ Software for Mac OS X .....	34
Installing iMap™ Software for Windows .....	35
Assigning DAW mode (Mackie Control/HUI) or self define MIDI functions with iMap™ .....	37
Assigning DAW mode (Mackie control/HUI) with iMap™ .....	38
Assigning MIDI message with User Define mode at iMap™ .....	40
Control element setup at User defines mode .....	42
Other Functions in iMap™ .....	44
Firmware upgrade .....	45
Restore the factory default settings .....	48
Specifications .....	49
Services .....	50

# Introduction

Thank you for purchasing the ICON Platform M<sup>+</sup> Midi/Audio control surface. We sincerely trust this product will provide years of satisfactory service, but if anything is not to your complete satisfaction, we will endeavor to make things right.

In these pages, you'll find a detailed description of the features of the Platform M<sup>+</sup>, as well as a guided tour through its front and rear panels, step-by-step instructions for its setup and use, and full specifications.

You'll also find a warranty card enclosed---please don't forget to fill it out and mail it so that you can receive online technical support at: [www.iconproaudio.com](http://www.iconproaudio.com). And so we can send you updated information about this and other ICON products in the future. As with most electronic devices, we strongly recommend you retain the original packaging. In the unlikely event the product must be returned for servicing, the original packaging (or reasonable equivalent) is required.

With proper care and adequate air circulation, your Platform M<sup>+</sup> will operate without any trouble for many years. We recommend that you record your serial number in the space provided below for future reference.

Please write your serial number here for future reference:

Purchased at:

Date of purchase:

## What's in the package?

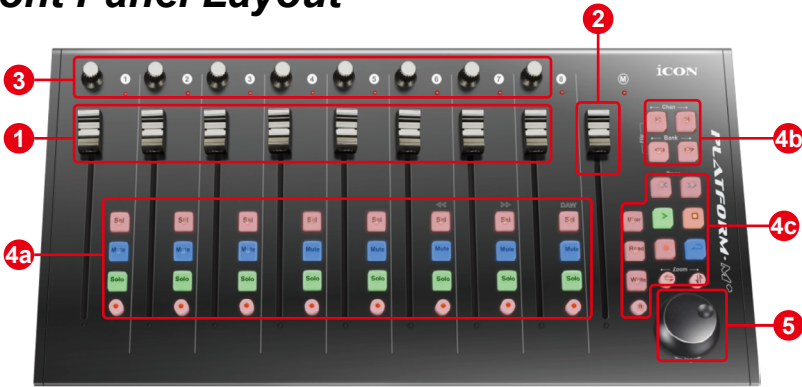
- Platform M<sup>+</sup> USB-MIDI Controller x 1pc
- CD x 1
- App software – iMap (Mac & Windows)
- User manual & QSG
- DAW software
- Quick Start Guide x 1
- USB2.0 Cable x 1
- AC adaptor x 1pc

# Features



- Extremely compact, durable and versatile
- Customize the perfect setup with a variety of Platform extension modules
- 8+1 touch-sensitive motorized faders with 10-bit resolution
- 8 dual-functions encoder knobs (Rotate and enter)
- Jog wheel shuttle for fast search and control
- Illuminated buttons for each channel including Sel, Mute, Solo and Record
- 6 illuminated transport buttons including Play, Stop, Rec, Rewind, Fast forward and Loop
- Illuminated “Zoom” buttons with 2 directional keys (Left/Right & Up/Down) used in combination with the jog wheel
- 2 illuminated “Track” buttons for easy selection of different channels
- 2 illuminated “Bank” buttons for shifting 8-channels
- 4 x Extension ports equipped for extension modules
- ICON “Quick-Setup” driver is available for Cubase, Nuendo, Reason and for instant plug & play feature
- Mackie control build-in for Cubase, Nuendo, Samplitude, Logic Pro, Reaper, Bitwig, Studio One, Ableton Live, Sonar and Audition.
- Mackie HUI protocol build-in for Pro Tools
- iMap™ software included for easy mapping of MIDI functions
- Firmware upgrade available simply via USB connection and iMap software
- Class-compliant with Windows XP, Vista (32-bit), Windows 7/8/10 (32-bit & 64-bit) and Mac OS X (IntelMac)
- USB 2.0 high speed connectivity
- Superior build quality and robust metal casing with Kensington lock port
- 12V/2.5A power adapter included

# Front Panel Layout



**Note:** Function operates slightly difference between DAWs. Please refer to your DAW manual for each function. The following description is based on the functions that operate in Apple Logic Pro.

## 1. Channel faders

The eight 100mm motorized faders are generally used for controlling the track volume of your DAW. They are all touch sensitive to allow override automation the moment you touch a fader. Also, they are motorized; they will automatically move to reflect the current level of the selected channels in your DAW application. Any automation recorded in a project will be reflected by the fader positions.

## 2. Master fader

This 100mm motorized fader operates the same as the other 8 faders. It controls your DAW software's master channel fader.

**Note:** Except Pro Tools – Pro Tools software is designed in such a way that the fader next to your last channel fader always acts as the master channel fader.

## 3. Knobs

The eight rotary encoder knobs are generally used for controlling the track pan position, aux send levels and EQ of your DAW. You may also preset them to adjust specific parameters within plug-ins and virtual instruments.

## 4. Control buttons

### 4a) Recording channel control buttons section

**REC buttons** - Activate and deactivate the recording state of the associated channel. The switch will light red when the channel is armed.

**SOLO buttons** - Turn On and Off the solo state of the associated channel. The switch will light red when the channel solo state is on and other channels will be muted. You could solo multiple channel by pressing SOLO buttons on additional channels.

**MUTE buttons** - Activate and deactivate the mute state of the associated channel. The switch will light red when the channel is muted.

**SEL buttons** - The SEL buttons activate the associated channels in the DAW software in order to perform a specific operation (for example, when adjusting EQ with the ASSIGNABLE ENCODERS, the SEL switch will be used to choose the channel you want to adjust). When a channel is selected, the associated SEL switch's red LED will light up.

#### 4b) Motorized fader control buttons section

<b>Chan &lt; button</b> -	Shift "one" channel up for all faders (except the master channel).
<b>Chan &gt; button</b> -	Shift "one" channel down for all faders (except the master channel).
<b>BANK &lt; button</b> -	Shift "eight" channels up for all faders (except the master channel).
<b>BANK &gt; button</b> -	Shift "eight" channels down for all faders (except the master channel).

#### 4c) Transport and Zoom control buttons section

<b>PLAY button</b> -	Activate the play function of the DAW.
<b>STOP button</b> -	Activate the stop function of the DAW.
<b>REC button</b> -	Activate the record function of the DAW.
<b>REWIND button</b> -	Activate the rewind function of the DAW.
<b>FAST FORWARD button</b> -	Activate the fast forward function of the DAW.
<b>LOOP button</b> -	Activate the loop function of the DAW.
<b>Zoom L/R button</b> -	Zoom in horizontally to the Graphical User Interface (GUI) of the DAW application. Activate the button and rotate the jog wheel to zoom in and out.
<b>Zoom U/D button</b> -	Zoom in vertically to the Graphical User Interface (GUI) of the DAW application. Activate the button and rotate the jog wheel to zoom in and out.
<b>MIXER button</b> -	Press this button to launch the mixer window of the DAW.
<b>READ button</b> -	Press the READ button to activate the read function of the current audio track.
<b>WRITE button</b> -	Press the WRITE button to activate the write function of the current audio track.
<b>LOCK button</b> -	Activate to lock all motorized faders.

### 5. Jog wheel

The jog wheel is used for various purposes specific to the DAW application, including shuttle and scrubbing functions.

# Side Panel Layout



## 1. USB port

Functions as a MIDI port to your notebook (or computer) and compatible software.

## 2. LCD Module (Platform D / Platform D2)

Connect your Platform D / Platform D2 here with the provided cable.

## 3. 12V/2.5A power adaptor

Connect the provided power adaptor here.

*(Note: Platform M<sup>+</sup> is not able to work without the provided power adaptor connected. The USB bus power is not able to provide sufficient power supply for Platform M<sup>+</sup>.)*

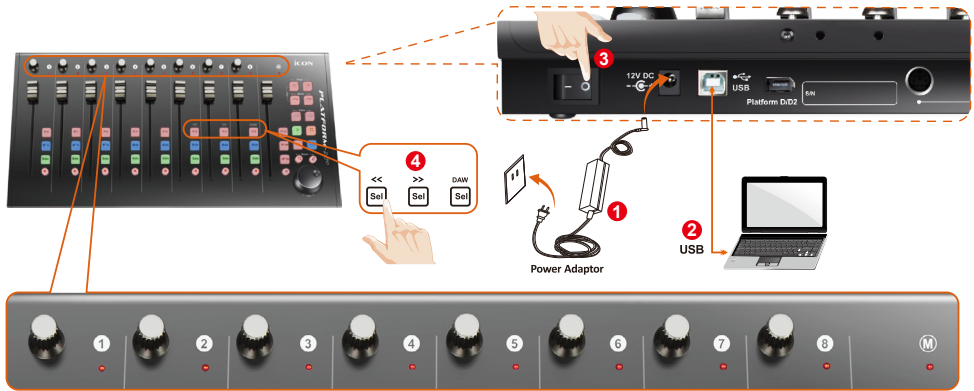
## 4. Extension ports

These extension ports are equipped for connecting dedicated Platform series control module such as Platform B (button module).



# Getting Started

## Connecting Your Platform M<sup>+</sup> Controller



### 2 Connect the Platform M<sup>+</sup> to your Mac/PC via the USB port

Choose a USB port on your Mac/PC and insert the wide (flat) end of the USB cable. Connect the cable's other end to the Platform M<sup>+</sup>. Your Mac/PC should automatically “detect” the new hardware and notify you that it is ready to use.

### 4 Select the DAW at Platform M<sup>+</sup>.

Press << (channel 6’s “Sel” button)/>> (channel 7’s “Sel” button) to scroll through the DAW list, and then press the “DAW” (channel 8’s “Sel” button) button to make the selection.

The DAW name will display on the LCD while you are scrolling through the list to make the selection if Platform D / Platform D2 (optional) is installed.

Otherwise, the 9 channel’s LED indicator lights located on the top will indicate the DAW. The sequence is as follows:

Channel 1 LED: Nuendo

Channel 2 LED: Cubase

Channel 3 LED: Logic Pro

Channel 4 LED: Samplitude

Channel 5 LED: Ableton Live

Channel 6 LED: Pro Tools

Channel 7 LED: User define

Channel 8 LED: Reaper

Channel 1+2 LEDs: Studio One

Channel 3+4 LEDs: Reason

Channel 5+6 LEDs: Bitwig

Channel 7+8 LEDs: Sonar

Channel 1+2+3 LEDs: Audition

**Tip:** Platform M<sup>+</sup> will memorise your last selected DAW mode and re-enter the same mode a few seconds after it has been switched on. (i.e. DAW mode selection is not needed if the last mode is being used.)