

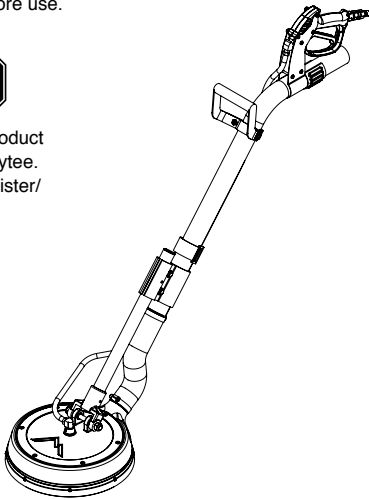
Instructions for 8901, 8902, 8903, 8904, 8907, 8908 Spinner®



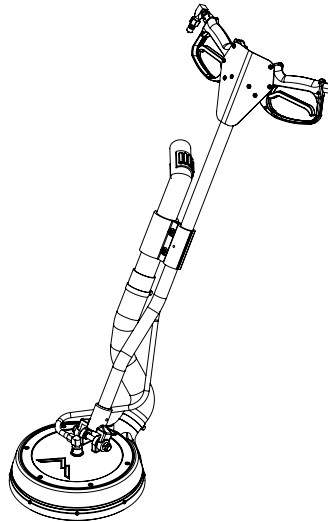
Please read before use.



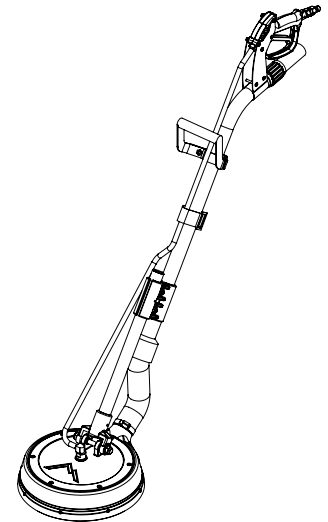
Register your product
at: <http://www.mytee.com/support/register/>



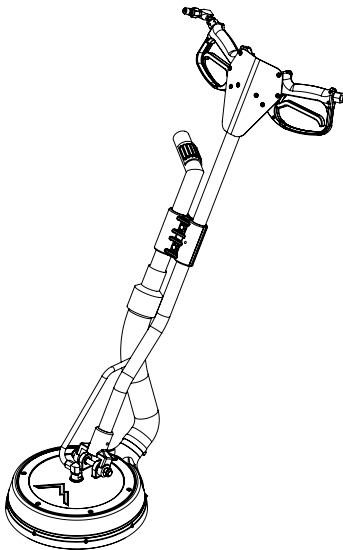
8901 - Wand handle, 2" tube



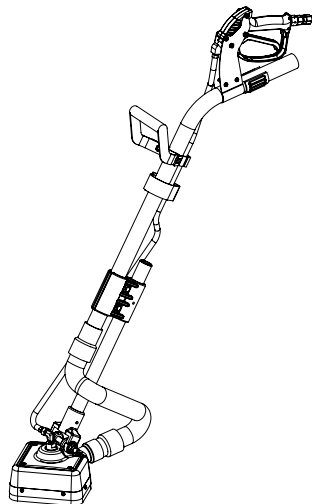
8902 - "T" handle, 2" tube



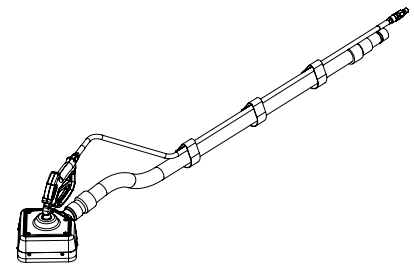
8903 - Wand handle, 1.5" tube



8904 - "T" handle, 1.5" tube



8907 - Corner Spinner®



8908 - Counter Spinner®

- 8901 p. 2
- 8902 p. 4
- 8903 p. 6
- 8904 p. 8
- 8907 p. 10
- 8908 p. 12
- General information p. 14

Model # _____

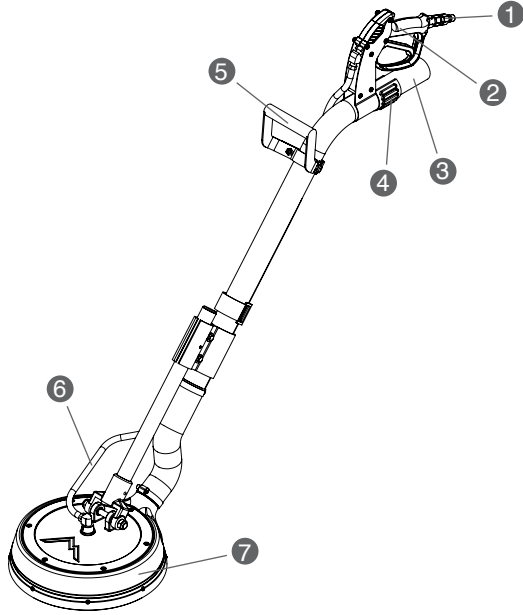
Serial # _____

Form # ADP-SPIN

5-14

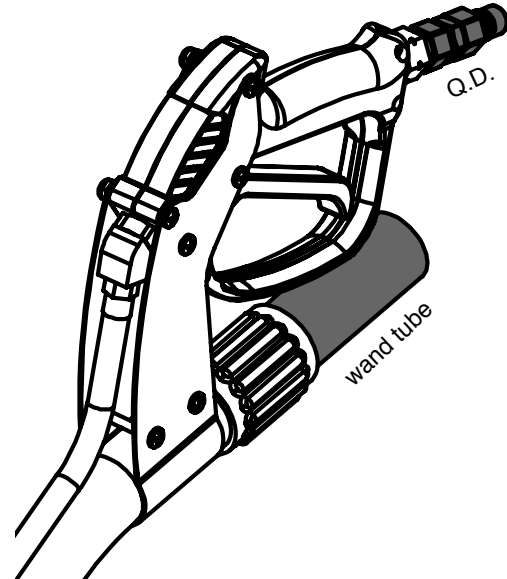
8901 WAND HANDLE, 2" TUBE SPINNER®

8901 FRONT



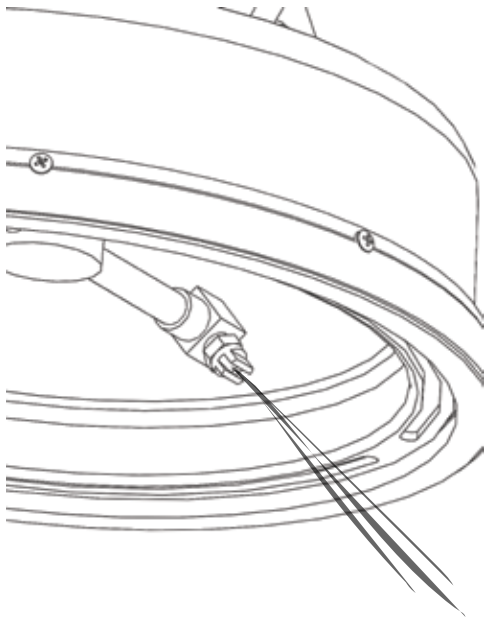
- | | |
|---------------------------|------------------------------|
| 1. Quick disconnect | 5. Wand grip handle |
| 2. High-pressure gun | 6. Hi-pressure solution hose |
| 3. Vacuum hose connection | 7. 12" Spinner® head |
| 4. Vac relief | |

VACUUM HOSE AND SOLUTION HOSE ATTACHMENT



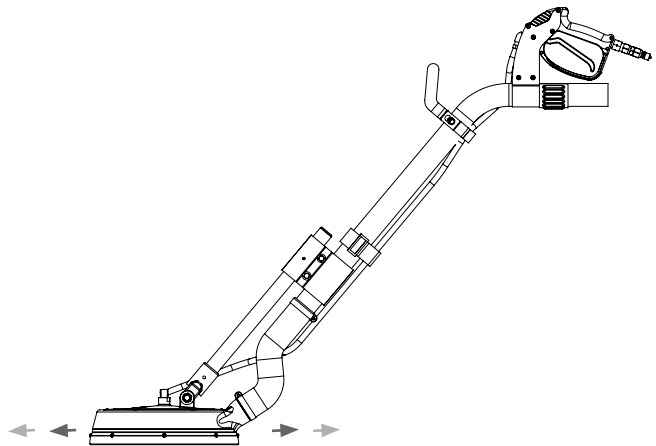
After the Vacuum Hose and Solution Hose are attached to the extractor, connect the Solution Hose to the Male Quick Disconnect, and the Vacuum Hose to wand tube.

Jets



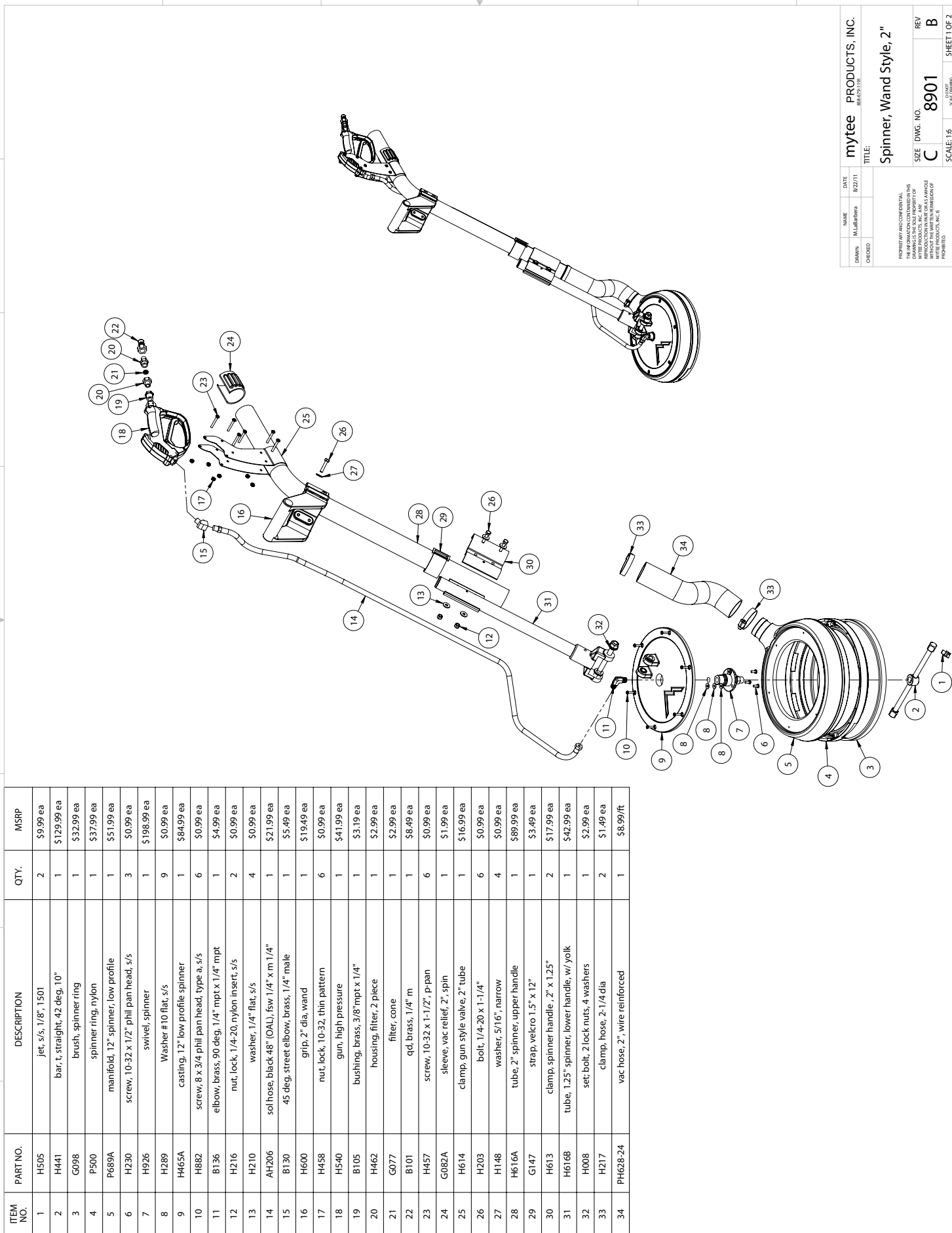
After the extractor is turned on and vacuum is engaged, squeeze the High-Pressure Trigger Gun. Liquid flows through the Solution Hose and activates the Spinner Bar.

USE



Hold the machine at waist level and use a back-and-forth motion.

8901 WAND HANDLE, 2" TUBE SPINNER®



ITEM NO.	PART NO.	DESCRIPTION	QTY.	MSRP
1	H505	jet, s/s, 1/8", 1501	2	\$9.99 ea
2	H441	bar, t, straight, 42 deg, 10"	1	\$129.99 ea
3	G098	brush, spinner ring	1	\$32.99 ea
4	P500	spinner ring, nylon	1	\$37.99 ea
5	P689A	manifold, 12" spinner, low profile	1	\$51.99 ea
6	H230	screw, 10-32 x 1/2" phill pan head, s/s	3	\$0.99 ea
7	H926	swivel, spinner	1	\$198.99 ea
8	H289	Washer #10 flat, s/s	9	\$0.99 ea
9	H465A	casting, 12" low profile spinner	1	\$84.99 ea
10	H882	screw, 8 x 3/4 phill pan head, type a, s/s	6	\$0.99 ea
11	B136	elbow, brass, 90 deg, 1/4" mpt x 1/4" mpt	1	\$4.99 ea
12	H216	nut, lock, 1/4-20 nylon insert, s/s	2	\$0.99 ea
13	H210	washer, 1/4" flat, s/s	4	\$0.99 ea
14	AH206	sol hose, black 48" (OAL), fsw 1/4" x m 1/4"	1	\$21.99 ea
15	B130	45 deg, street elbow, brass, 1/4" male	1	\$5.49 ea
16	H600	nut, lock, 10-32, thin pattern	6	\$0.99 ea
17	H458	grip, 2" dia, wand	1	\$19.49 ea
18	H540	gun, high pressure	1	\$41.99 ea
19	B105	bushing, brass, 3/8" mpt x 1/4"	1	\$3.19 ea
20	H462	housing, filter, 2 piece	1	\$2.99 ea
21	G077	filter, cone	1	\$2.99 ea
22	B101	qd, brass, 1/4" m	1	\$8.49 ea
23	H457	screw, 10-32 x 1-1/2", P-pan	6	\$0.99 ea
24	G082A	sleeve, vac relief, 2", spin	1	\$1.99 ea
25	H614	clamp, gun style valve, 2" tube	1	\$16.99 ea
26	H203	bolt, 1/4-20 x 1-1/4"	6	\$0.99 ea
27	H148	washer, 5/16", narrow	4	\$0.99 ea
28	H616A	strap, velcro 1.5" x 12"	1	\$89.99 ea
29	G147	tube, 2" spinner, upper handle	1	\$3.49 ea
30	H613	clamp, spinner handle, 2" x 1.25"	2	\$17.99 ea
31	H616B	tube, 1.25" spinner, lower handle, w/ yolk	1	\$42.99 ea
32	H008	set, bolt, 2 lock nuts, 4 washers	1	\$2.99 ea
33	H217	clamp, hose, 2-1/4 dia	2	\$1.49 ea
34	PH628-24	vac hose, 2", wire reinforced	1	\$8.99/ft

DATE	8/22/11
NAME	M. LaBarbera
DESIGNED BY	
CHECKED BY	

PROPERTY AND CONFIDENTIALITY OF MYTEE PRODUCTS, INC. THIS DRAWING IS THE SOLE PROPERTY OF MYTEE PRODUCTS, INC. ANY REPRODUCTION IN WHOLE OR IN PART WITHOUT THE WRITTEN PERMISSION OF MYTEE PRODUCTS, INC. IS PROHIBITED.

mytee PRODUCTS, INC.
88-693119

TITLE:
Spinner, Wand Style, 2"

SIZE DWG. NO. REV
C 8901 B

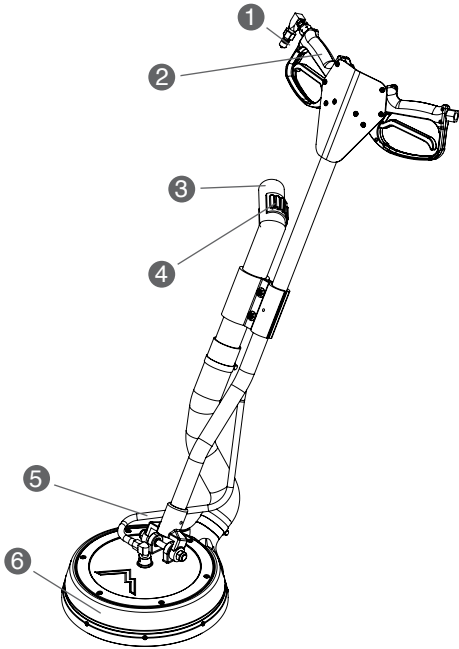
SCALE: 1:5 SIZE DIMS. SHEET 1 OF 2

Order parts at: www.mytee.com/products/product.php?id=8901

Part prices are subject to change.

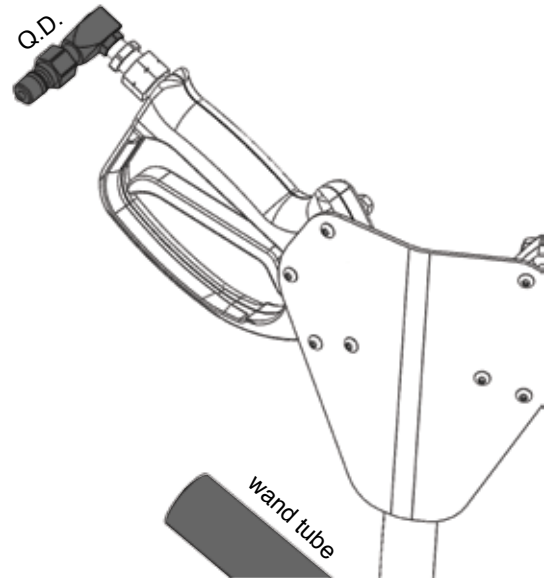
8902 "T" HANDLE, 2" TUBE SPINNER®

8902 FRONT



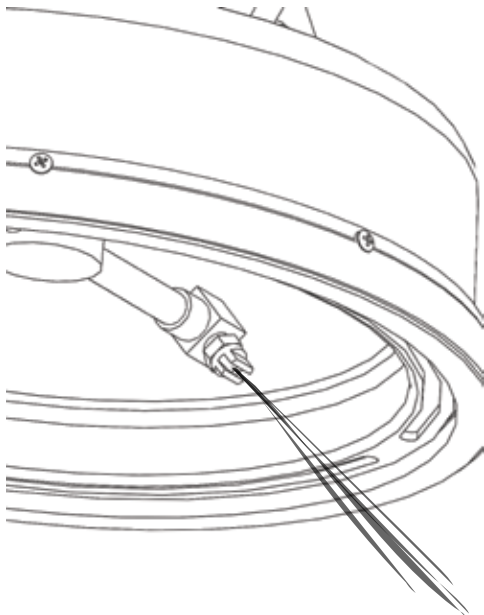
- 1. Quick disconnect
- 2. High-pressure gun
- 3. Vacuum hose connection
- 4. Vac relief
- 5. Hi-pressure solution hose
- 6. 12" Spinner® head

VACUUM HOSE AND SOLUTION HOSE ATTACHMENT



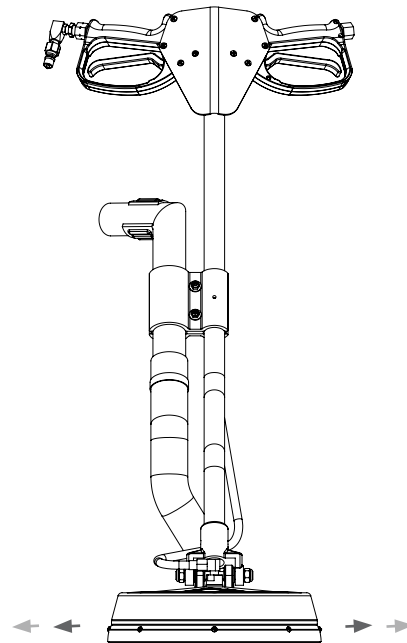
After the Vacuum Hose and Solution Hose are attached to the extractor, connect the Solution Hose to the Male Quick Disconnect, and the Vacuum Hose to wand tube.

Jets



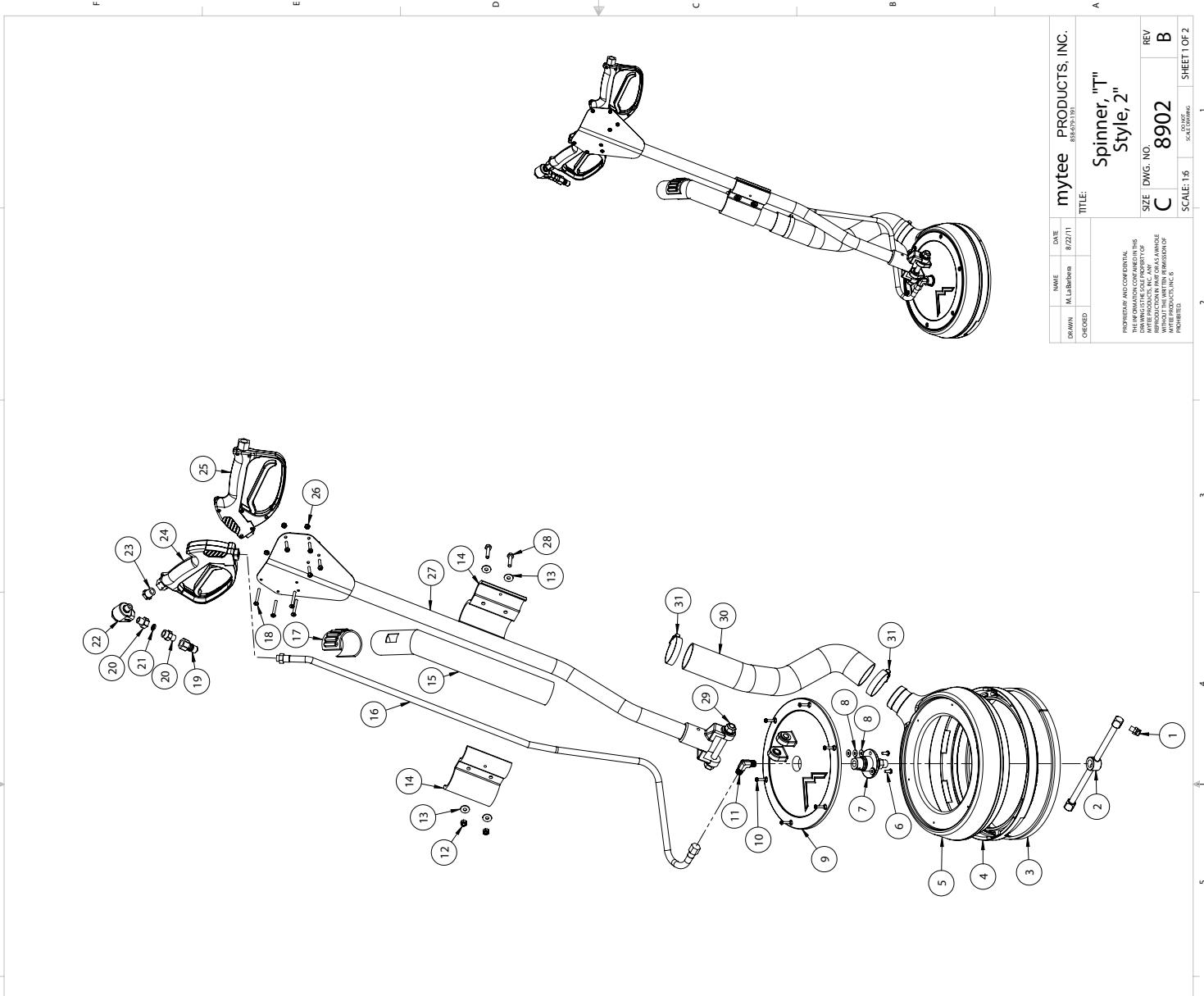
After the extractor is turned on and vacuum is engaged, squeeze the High-Pressure Trigger Gun. Liquid flows through the Solution Hose and activates the Spinner Bar.

USE



Hold the machine at waist level and use side to side.

8902 "T" HANDLE, 2" TUBE SPINNER®



ITEM NO.	PART NO.	DESCRIPTION	QTY.	MSRP
1	H505	jet, s/s, 1/8", 1501	2	\$9.99 ea
2	H441	bar, t, straight, 42 deg, 10"	1	\$129.99 ea
3	G098	brush, spinner ring	1	\$32.99 ea
4	P500	spinner ring, nylon	1	\$37.99 ea
5	P689A	manifold, 12" spinner, low profile	1	\$51.99 ea
6	H230	screw, 10-32 x 1/2" phil pan head, s/s	3	\$0.99 ea
7	H926	swivel, spinner	1	\$198.99 ea
8	H289	Washer #10 flat, s/s	9	\$0.99 ea
9	H465A	casting, 12" low profile spinner	1	\$84.99 ea
10	H882	screw, 8 x 3/4 phil pan head, type a, s/s	6	\$0.99 ea
11	B136	elbow, brass, 90 deg, 1/4" mpt x 1/4" mpt	1	\$4.99 ea
12	H216	nut, lock, 1/4-20, nylon insert, s/s	2	\$0.99 ea
13	H210	washer, 1/4" flat, s/s	4	\$0.99 ea
14	H613	clamp, spinner handle, 2" x 1.25"	2	\$17.99 ea
15	H093	tube, vac elbow, 2" dia, spinner	1	\$52.99 ea
16	AH206	sol hose, black 48" (OAL), fsw 1/4" x m 1/4"	1	\$21.99 ea
17	G082A	sleeve, vac relief, 2", spin	1	\$1.99 ea
18	H457	screw, 10-32 x 1-1/2", p-pan	8	\$0.99 ea
19	B101	qd, brass, 1/4" m	1	\$8.49 ea
20	H462	housing, filter, 2 piece	1	\$2.99 ea
21	G077	filter, cone	1	\$2.99 ea
22	B100A	swivel, high pressure, stainless steel	1	\$109.99 ea
23	B105	bushing, brass, 3/8" mpt x 1/4"	1	\$3.19 ea
24	H540	gun, high pressure	1	\$41.99 ea
25	H540A	gun, clam shell only	1	\$20.99 ea
26	H458	nut, lock, 10-32, thin pattern	8	\$0.99 ea
27	H092	handle, "T", spinner	1	\$139.99 ea
28	H203	bolt, 1/4-20 x 1-1/4"	2	\$0.99 ea
29	H008	set bolt, 2 lock nuts, 4 washers	1	\$2.99 ea
30	PH628-24	vac hose, 2", wire reinforced	1	\$8.99/ft
31	H217	clamp, hose, 2-1/4 dia	2	\$14.49 ea

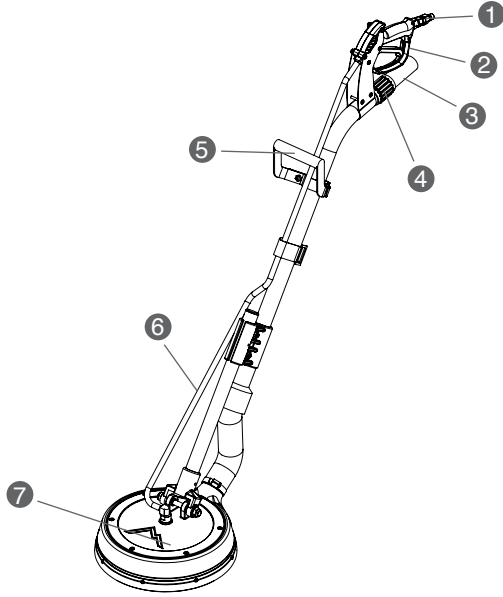
DESIGN	NAME	DATE	mytee PRODUCTS, INC. 886.673.191
CHECKED	M. LaBelle	8/22/11	
PROPERTY OF MYTEE PRODUCTS, INC. THIS DRAWING IS THE SOLE PROPERTY OF MYTEE PRODUCTS, INC. ANY REPRODUCTION IN WHOLE OR IN PART WITHOUT THE WRITTEN PERMISSION OF MYTEE PRODUCTS, INC. IS PROHIBITED.			TITLE: Spinner, "T" Style, 2"
SIZE	DWG. NO.	REV	SCALE: 1:6 SHEET 1 OF 2
C	8902	B	

Order parts at: www.mytee.com/products/product.php?id=8902

Part prices are subject to change.

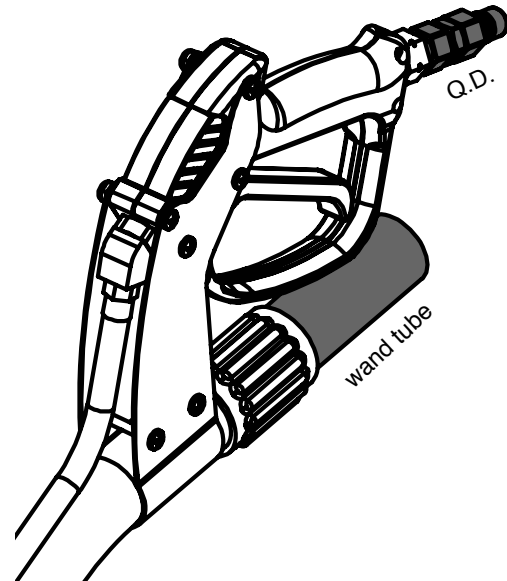
8903 WAND HANDLE, 1.5" TUBE SPINNER®

8903 FRONT



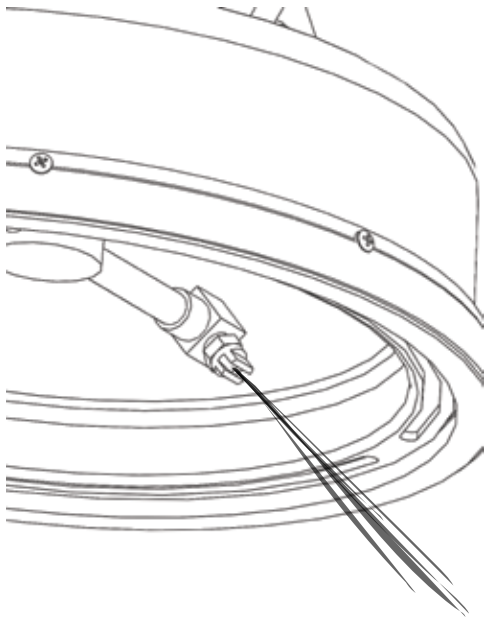
1. Male quick disconnect
2. High-pressure trigger gun
3. Vacuum hose connection port
4. Vac relief
5. Wand grip handle
6. Solution hose
7. 12" Spinner® head

VACUUM HOSE AND SOLUTION HOSE ATTACHMENT



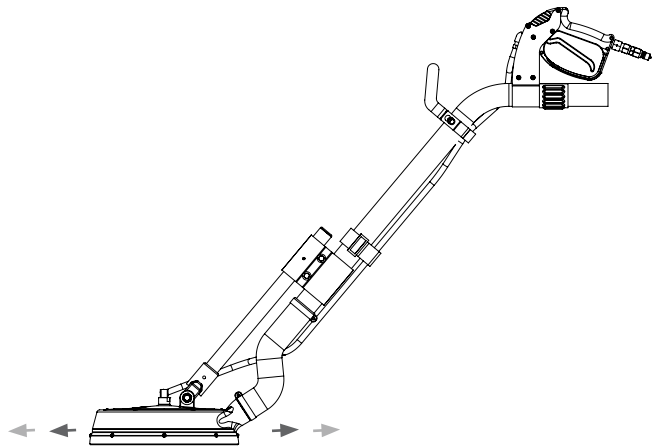
After the Vacuum Hose and Solution Hose are attached to the extractor, connect the Solution Hose to the Male Quick Disconnect, and the Vacuum Hose to wand tube.

Jets



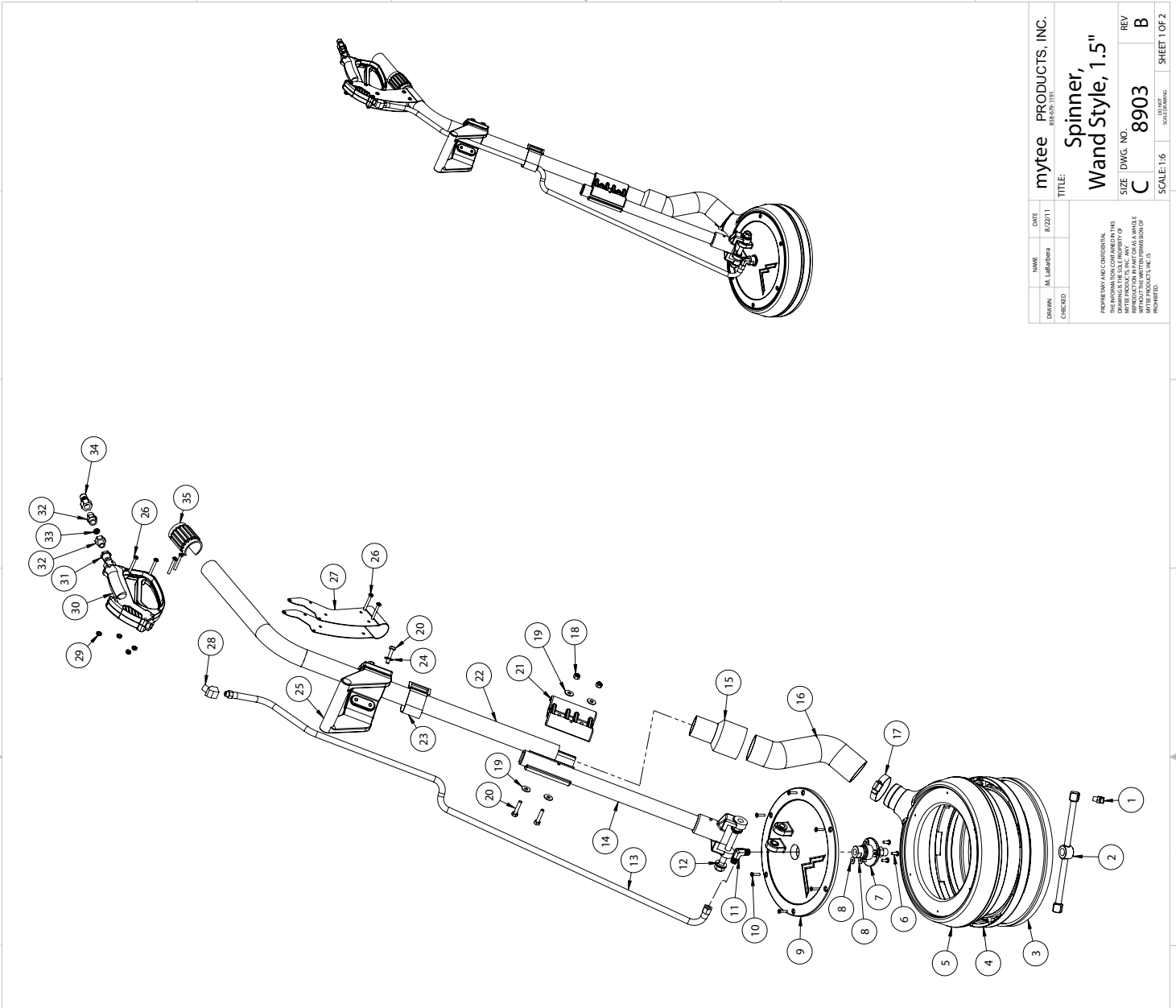
After the extractor is turned on and vacuum is engaged, squeeze the High-Pressure Trigger Gun. Liquid flows through the Solution Hose and activates the Spinner Bar.

USE



Hold the machine at waist level and use a back-and-forth motion.

8903 WAND HANDLE, 1.5" TUBE SPINNER®



ITEM NO.	PART NO.	DESCRIPTION	QTY.	MSRP
1	H505	jet, s/s, 1/8", 1501	2	\$9.99 ea
2	H441	bar, t, straight, 42 deg, 10"	1	\$129.99 ea
3	G098	brush, spinner ring	1	\$32.99 ea
4	P500	spinner ring, nylon	1	\$37.99 ea
5	P689A	manifold, 12" spinner, low profile	1	\$51.99 ea
6	H230	screw, 10-32 x 1/2" phil pan head, s/s	3	\$0.99 ea
7	H926	swivel, spinner	1	\$198.99 ea
8	H289	Washer # 10 flat, s/s	6	\$0.99 ea
9	H465A	casting, 12" low profile spinner	1	\$84.99 ea
10	H882	screw, 8 x 3/4 phil pan head, type a, s/s	6	\$0.99 ea
11	B136	elbow, brass, 90 deg, 1/4" mpt x 1/4" mpt	1	\$4.99 ea
12	H008	set bolt, 2 lock nuts, 4 washers	1	\$2.99 ea
13	AH206	sol hose, black 48" (OAL), fsw 1/4" x m 1/4"	1	\$21.99 ea
14	H616B	tube, 1.25" spinner, lower handle, w/ yolk	1	\$42.99 ea
15	H498A	cuff, 2" thread x 1-1/2" slip	1	\$14.99 ea
16	PH628-24	hose, vac wire reinforced 2"	1	\$8.99/ft
17	H217	clamp, hose, 2-1/4 dia	1	\$1.49 ea
18	H216	nut, lock, 1/4-20, nylon insert, s/s	2	\$0.99 ea
19	H210	washer, 1/4" flat, s/s	4	\$0.99 ea
20	H203	bolt, 1/4-20 x 1-1/4"	6	\$0.99 ea
21	H613A	clamp, spinner handle, 1.5" x 1.25"	2	\$11.99 ea
22	H616	tube, 1.5" spinner, wand style	1	\$81.99 ea
23	G147	strap, velcro 1.5" x 12"	1	\$3.49 ea
24	H148	washer, 5/16", narrow	4	\$0.99 ea
25	H785	grip, 1.5" dia, wand	1	\$7.99 ea
26	H457	screw, 10-32 x 1-1/2", p-pan	6	\$0.99 ea
27	H614A	gun style valve clamp, 1.5"	1	\$16.99 ea
28	B130	45 deg, street elbow, brass, 1/4" male	1	\$5.49 ea
29	H458	nut, lock, 10-32, thin pattern	6	\$0.99 ea
30	H540	gun, high pressure	1	\$41.99 ea
31	B105	bushing, brass, 3/8" mpt x 1/4"	1	\$3.19 ea
32	H462	housing, filter, 2 piece	1	\$2.99 ea
33	G077	filter, cone	1	\$2.99 ea
34	B101	qd, brass, 1/4" m	1	\$8.49 ea
35	G082	cap, vacuum relief slot (spin)	1	\$3.25 ea

NAME	DATE	mytee	PRODUCTS, INC.
DRAWN	8/22/11	M. Labriola	858-992-3193
CHECKED			
TITLE:		Spinner, Wand Style, 1.5"	
SIZE	DWG. NO.	REV	
C	8903	B	
SCALE: 1:6	DATE	SHEET	1 OF 2

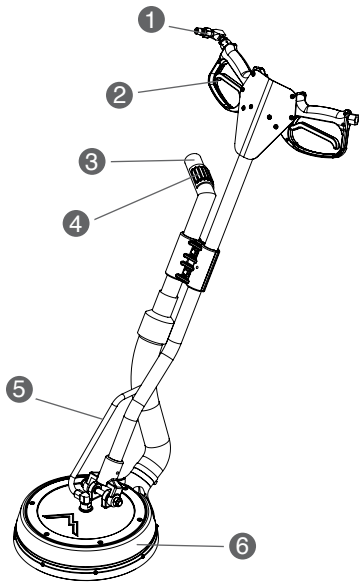
PROPERTY AND CONFIDENTIAL INFORMATION OF MYTEE PRODUCTS, INC. ANY REPRODUCTION OR USE OF THIS INFORMATION IN ANY MANNER WITHOUT THE WRITTEN PERMISSION OF MYTEE PRODUCTS, INC. IS PROHIBITED.

Order parts at: <http://www.mytee.com/products/8903-spinner-tile-grout-cleaning-tool>

Part prices are subject to change.

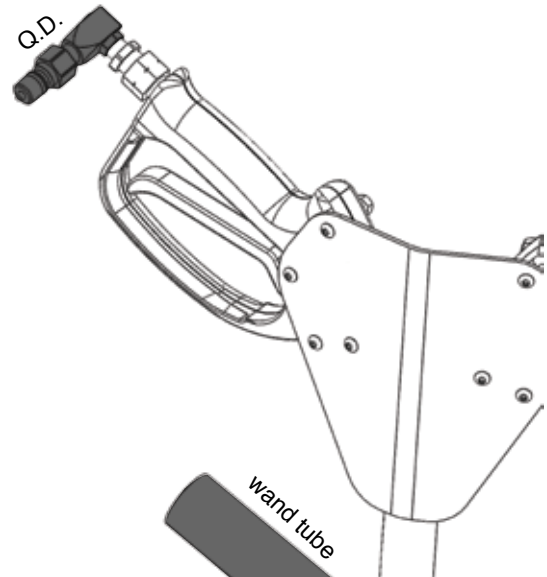
8904 "T" HANDLE, 1.5" TUBE SPINNER®

8904 FRONT



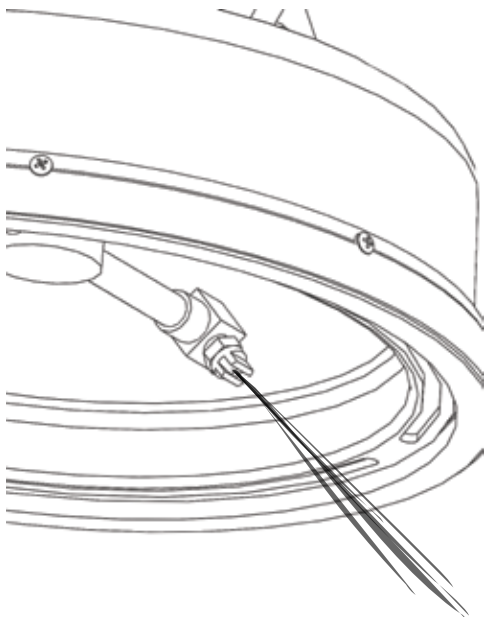
- 1. Male quick disconnect
- 2. High-pressure trigger gun
- 3. Vacuum hose connection port
- 4. Vac Relief
- 5. Solution hose
- 6. 12" Spinner® head

VACUUM HOSE AND SOLUTION HOSE ATTACHMENT



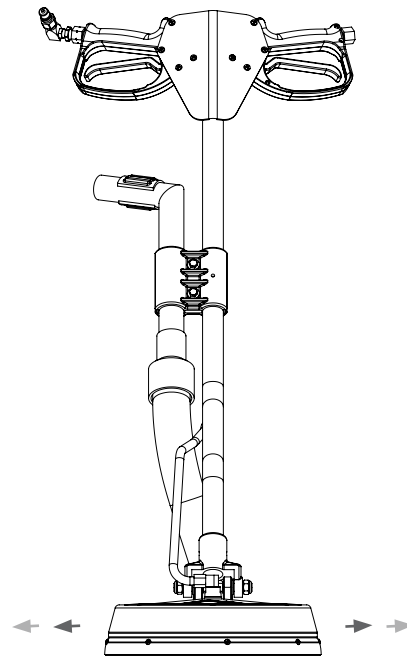
After the Vacuum Hose and Solution Hose are attached to the extractor, connect the Solution Hose to the Male Quick Disconnect, and the Vacuum Hose to wand tube.

Jets



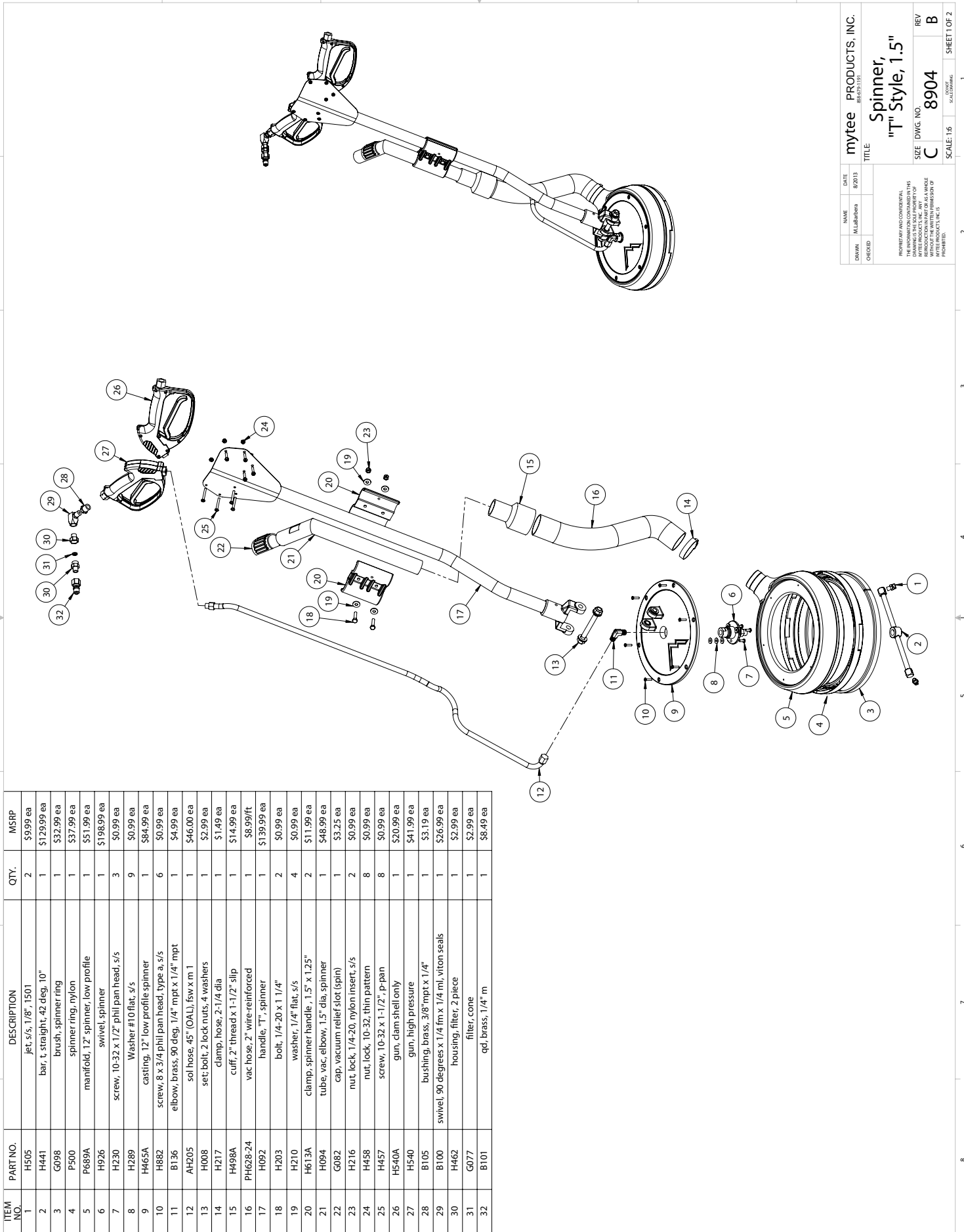
After the extractor is turned on and vacuum is engaged, squeeze the High-Pressure Trigger Gun. Liquid flows through the Solution Hose and activates the Spinner Bar.

USE



Hold the machine at waist level and use side to side.

8904 "T" HANDLE, 1.5" TUBE SPINNER®



ITEM NO.	PART NO.	DESCRIPTION	QTY.	MSRP
1	H505	jet, s/s, 1/8", 1501	2	\$9.99 ea
2	H441	bar, t, straight, 42 deg, 10"	1	\$129.99 ea
3	G098	brush, spinner ring	1	\$32.99 ea
4	P500	spinner ring, nylon	1	\$37.99 ea
5	P689A	manifold, 12" spinner, low profile	1	\$51.99 ea
6	H926	swivel, spinner	1	\$198.99 ea
7	H230	screw, 10-32 x 1/2" phil pan head, s/s	3	\$0.99 ea
8	H289	Washer #10 flat, s/s	9	\$0.99 ea
9	H465A	casting, 12" low profile spinner	1	\$84.99 ea
10	H882	screw, 8 x 3/4 phil pan head, type a, s/s	6	\$0.99 ea
11	B136	elbow, brass, 90 deg, 1/4" mpt x 1/4" mpt	1	\$4.99 ea
12	AH205	sol hose, 45" (OAL), fsw x m 1	1	\$46.00 ea
13	H008	set: bolt, 2 lock nuts, 4 washers	1	\$2.99 ea
14	H217	clamp, hose, 2-1/4 dia	1	\$14.99 ea
15	H498A	cuff, 2" thread x 1-1/2" slip	1	\$14.99 ea
16	PH628-24	vac hose, 2" wire-reinforced	1	\$8.99/ft
17	H092	handle, "T", spinner	1	\$139.99 ea
18	H203	bolt, 1/4-20 x 1 1/4"	2	\$0.99 ea
19	H210	washer, 1/4" flat, s/s	4	\$0.99 ea
20	H613A	clamp, spinner handle, 1.5" x 1.25"	2	\$11.99 ea
21	H094	tube, vac, elbow, 1.5" dia, spinner	1	\$48.99 ea
22	G082	cap, vacuum relief slot (spin)	1	\$3.25 ea
23	H216	nut, lock, 1/4-20, nylon insert, s/s	2	\$0.99 ea
24	H458	nut, lock, 10-32, thin pattern	8	\$0.99 ea
25	H457	screw, 10-32 x 1-1/2", p-pan	8	\$0.99 ea
26	H540A	gun, diam shell only	1	\$20.99 ea
27	H540	gun, high pressure	1	\$41.99 ea
28	B105	bushing, brass, 3/8" mpt x 1/4"	1	\$3.19 ea
29	B100	swivel, 90 degrees x 1/4 fm x 1/4 mi, viton seals	1	\$26.99 ea
30	H462	housing, filter, 2 piece	1	\$2.99 ea
31	G077	filter, cone	1	\$2.99 ea
32	B101	qd, brass, 1/4" m	1	\$8.49 ea

DESIGN	NAME	DATE	mytee PRODUCTS, INC.
CHECKED	M.L. Barbera	8/2013	88-6931191
TITLE			Spinner, "T" Style, 1.5"
SIZE	DWG. NO.	REV	
C	8904	B	
SCALE: 1:5			SHEET 1 OF 2

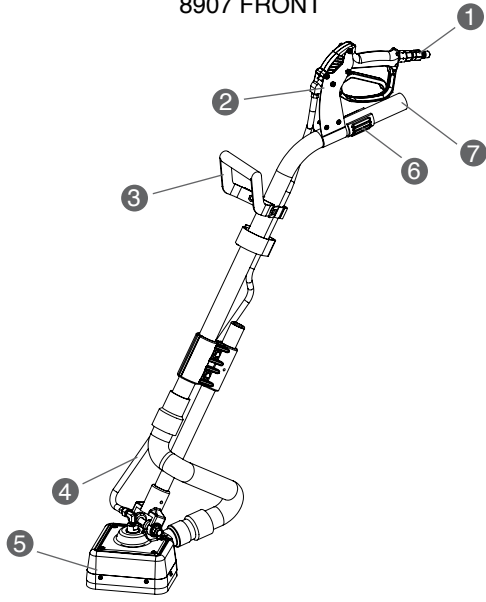
PROPERTY AND CONSTRUCTION OF THIS DRAWING IS THE SOLE PROPERTY OF MYTEE PRODUCTS, INC. ANY REPRODUCTION IN PART OR AS A WHOLE WITHOUT THE WRITTEN PERMISSION OF MYTEE PRODUCTS, INC. IS PROHIBITED.

Order parts at: <http://www.mytee.com/products/product.php?id=8904>

Part prices are subject to change.

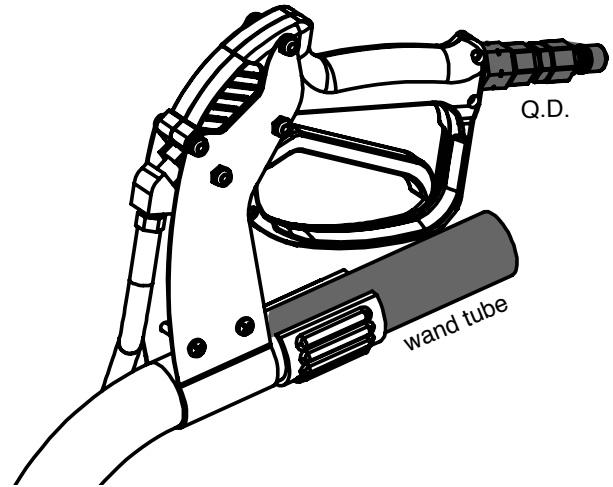
8907 CORNER SPINNER®

8907 FRONT



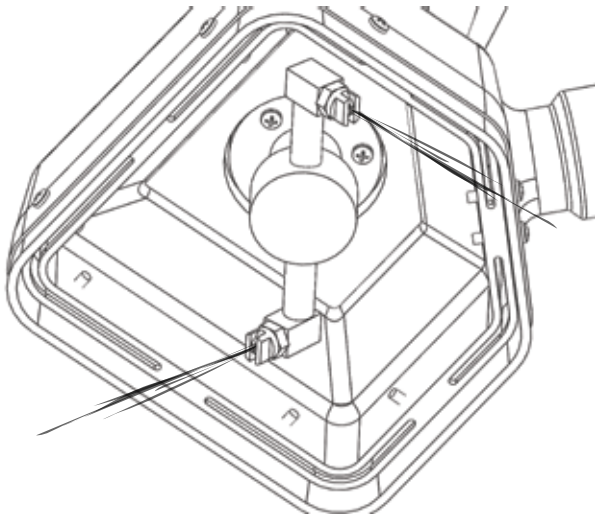
1. Male quick disconnect
2. High-pressure trigger gun
3. Wand grip handle
4. Solution hose
5. 6" Spinner® head
6. Vac Relief
7. Vacuum hose connection port

VACUUM HOSE AND SOLUTION HOSE ATTACHMENT



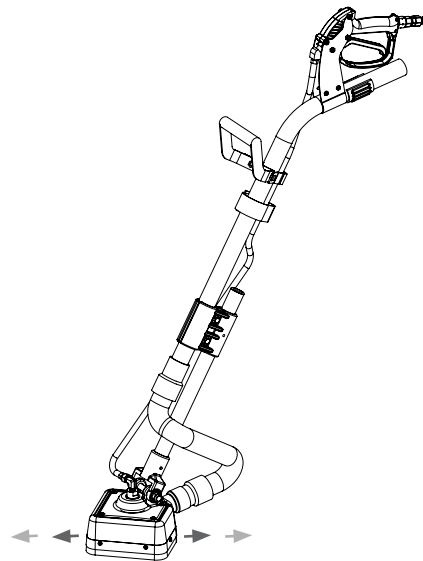
After the Vacuum Hose and Solution Hose are attached to the extractor, connect the Solution Hose to the Male Quick Disconnect, and the Vacuum Hose to wand tube.

Jets



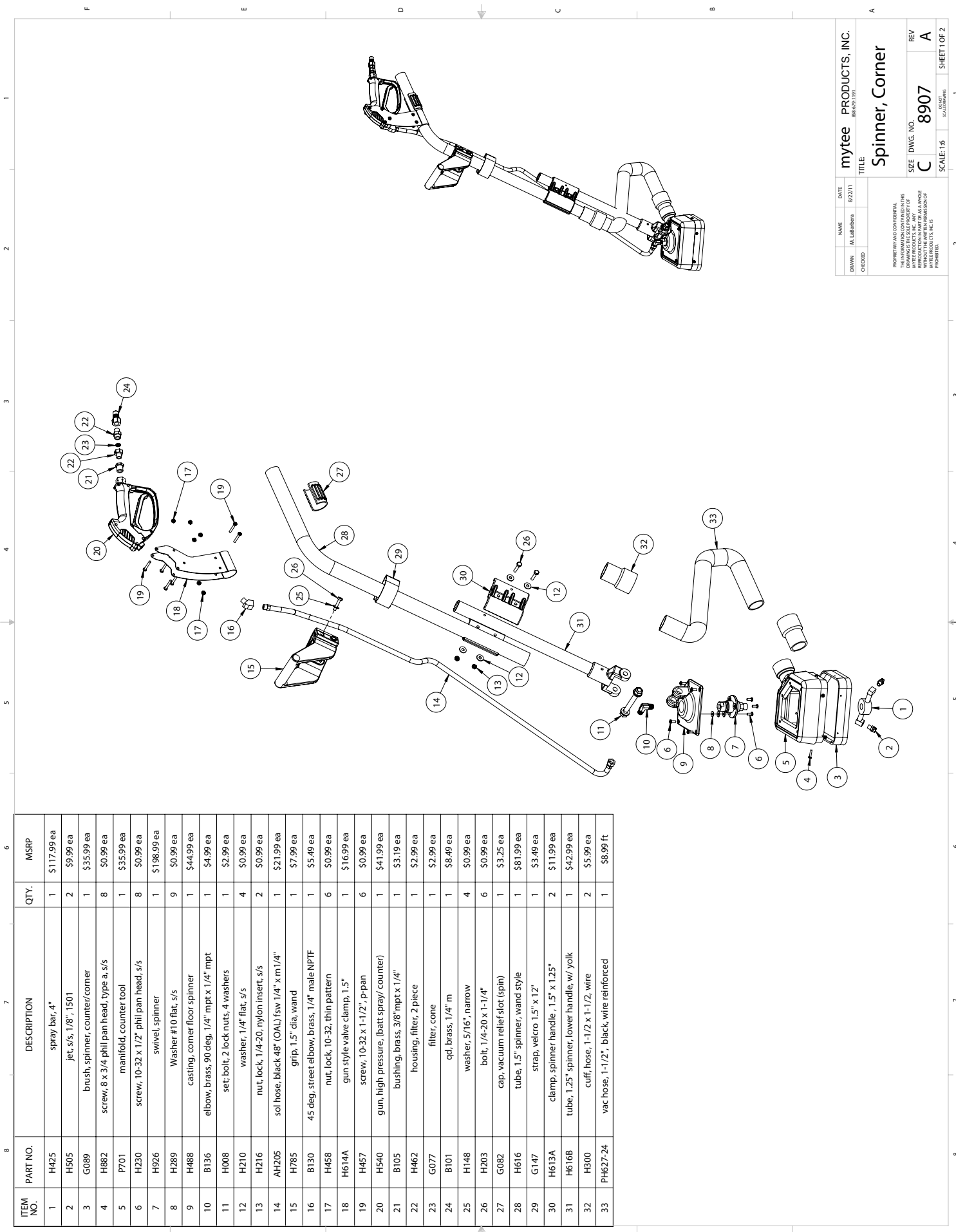
After the extractor is turned on and vacuum is engaged, squeeze the High-Pressure Trigger Gun. Liquid flows through the Solution Hose and activates the Spinner Bar.

USE



Hold the machine at waist level and use a back-and-forth motion.

8907 CORNER SPINNER®



ITEM NO.	PART NO.	DESCRIPTION	QTY.	MSRP
1	H425	spray bar, 4"	1	\$117.99 ea
2	H505	jet, s/s, 1/8", 1501	2	\$9.99 ea
3	G089	brush, spinner, counter/corner	1	\$35.99 ea
4	H882	screw, 8 x 3/4 phil pan head, type a, s/s	8	\$0.99 ea
5	P701	manifold, counter tool	1	\$35.99 ea
6	H230	screw, 10-32 x 1/2" phil pan head, s/s	8	\$0.99 ea
7	H926	swivel, spinner	1	\$198.99 ea
8	H289	Washer #10 flat, s/s	9	\$0.99 ea
9	H488	casting, corner floor spinner	1	\$44.99 ea
10	B136	elbow, brass, 90 deg, 1/4" mpt x 1/4" mpt	1	\$4.99 ea
11	H008	set; bolt, 2 lock nuts, 4 washers	1	\$2.99 ea
12	H210	washer, 1/4" flat, s/s	4	\$0.99 ea
13	H216	nut, lock, 1/4-20, nylon insert, s/s	2	\$0.99 ea
14	AH205	sol hose, black 48" (OAL) fsw 1/4" x m 1/4"	1	\$21.99 ea
15	H785	grip, 1.5" dia, wand	1	\$7.99 ea
16	B130	45 deg, street elbow, brass, 1/4" male NPTF	1	\$5.49 ea
17	H458	nut, lock, 10-32, thin pattern	6	\$0.99 ea
18	H614A	gun style valve clamp, 1.5"	1	\$16.99 ea
19	H457	screw, 10-32 x 1-1/2", p-pan	6	\$0.99 ea
20	H540	gun, high pressure, (batt spray/ counter)	1	\$41.99 ea
21	B105	bushing, brass, 3/8" mpt x 1/4"	1	\$3.19 ea
22	H462	housing, filter, 2 piece	1	\$2.99 ea
23	G077	filter, cone	1	\$2.99 ea
24	B101	qd, brass, 1/4" m	1	\$8.49 ea
25	H148	washer, 5/16", narrow	4	\$0.99 ea
26	H203	bolt, 1/4-20 x 1-1/4"	6	\$0.99 ea
27	G082	cap, vacuum relief slot (spin)	1	\$3.25 ea
28	H616	tube, 1.5" spinner, wand style	1	\$81.99 ea
29	G147	strap, velcro 1.5" x 1.2"	1	\$3.49 ea
30	H613A	clamp, spinner handle, 1.5" x 1.25"	2	\$11.99 ea
31	H616B	tube, 1.25" spinner, lower handle, w/ yolk	1	\$42.99 ea
32	H900	cuff, hose, 1-1/2 x 1-1/2, wire	2	\$5.99 ea
33	PH627-24	vac hose, 1-1/2", black, wire reinforced	1	\$8.99 ft

mytee PRODUCTS, INC. #88-63131	DATE 8/22/11
NAME M. Labarona	TITLE Spinner, Corner
SEE DWG. NO. C 8907	REV A
SCALE: 1:5	SHEET 1 OF 2

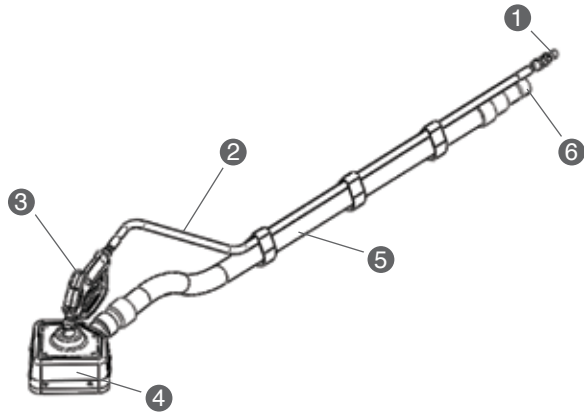
PROPERTY AND CONFIDENTIAL INFORMATION. THIS DOCUMENT IS THE PROPERTY OF MYTEE PRODUCTS, INC. AND IS TO BE KEPT AS A WHOLE WITHOUT THE WRITTEN PERMISSION OF MYTEE PRODUCTS, INC.

Order parts at: <http://www.mytee.com/products/product.php?id=8907>

Part prices are subject to change.

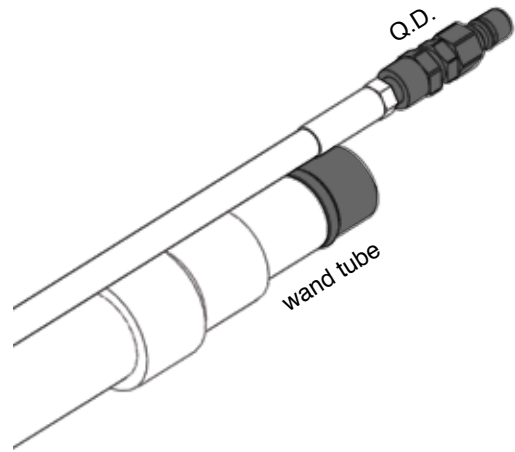
8908 COUNTER SPINNER®

8908 FRONT



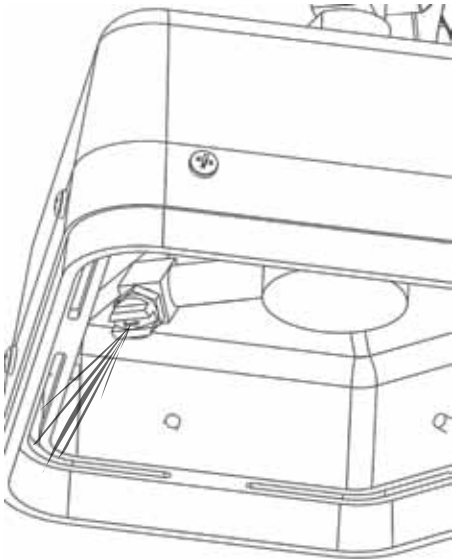
- 1. Male quick disconnect
- 2. Solution hose
- 3. High-pressure trigger gun
- 4. 6" Spinner® head
- 5. Vacuum hose
- 6. Vacuum hose connection port

VACUUM HOSE AND SOLUTION HOSE ATTACHMENT



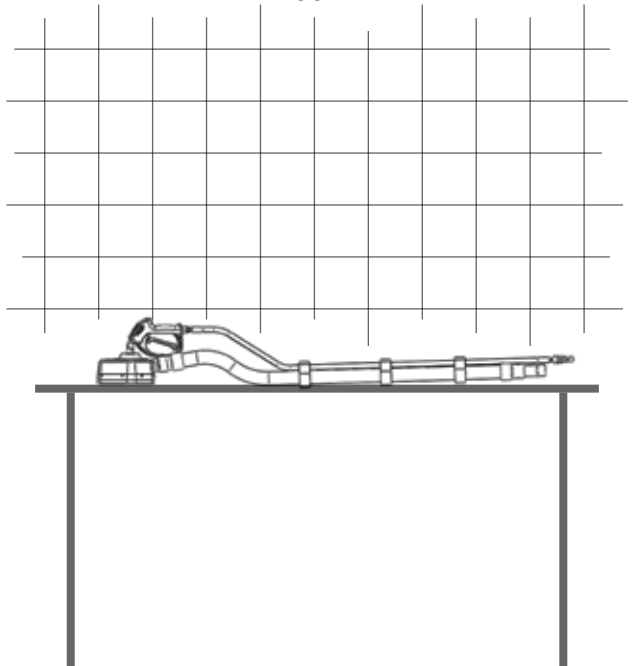
After the Vacuum Hose and Solution Hose are attached to the extractor, connect the Solution Hose to the Male Quick Disconnect, and the Vacuum Hose to wand tube.

Jets



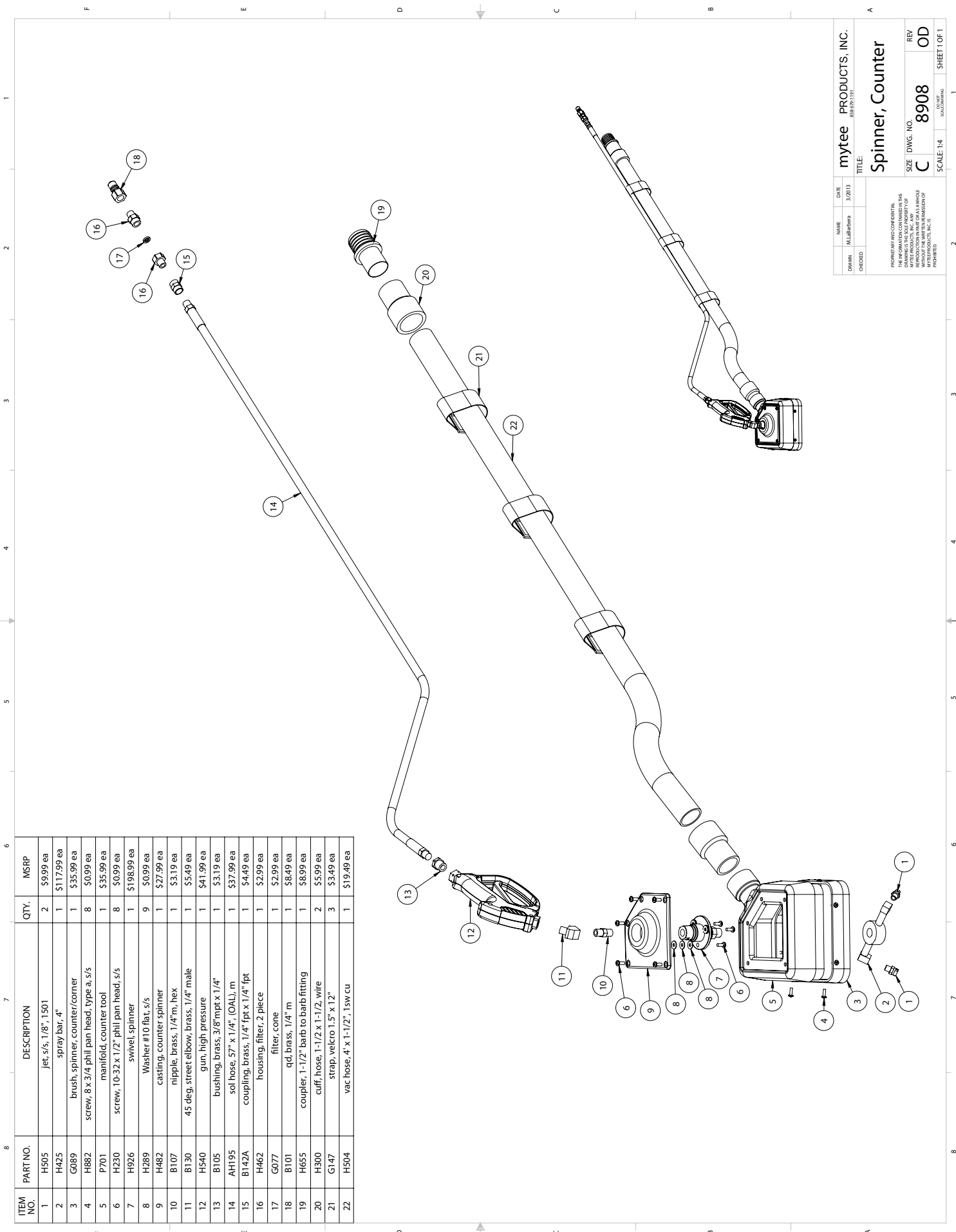
After the extractor is turned on and vacuum is engaged, squeeze the High-Pressure Trigger Gun. Liquid flows through the Solution Hose and activates the Spinner Bar.

USE



Use unit on counter top or other hard surface.

8908 COUNTER SPINNER®



ITEM NO.	PART NO.	DESCRIPTION	QTY.	MSRP
1	H505	jet, s/s, 1/8", 1501	2	\$9.99 ea
2	H425	spray bar, 4"	1	\$117.99 ea
3	G089	brush, spinner, counter/corner	1	\$35.99 ea
4	H882	screw, 8 x 3/4 phil pan head, type a, s/s	8	\$0.99 ea
5	P701	manifold, counter tool	1	\$35.99 ea
6	H230	screw, 10-32 x 1/2" phil pan head, s/s	8	\$0.99 ea
7	H926	swivel, spinner	1	\$198.99 ea
8	H289	Washer #10 flat, s/s	9	\$0.99 ea
9	H482	casting, counter spinner	1	\$27.99 ea
10	B107	nipple, brass, 1/4"m, hex	1	\$3.19 ea
11	B130	45 deg. street elbow, brass, 1/4" male	1	\$5.49 ea
12	H540	gun, high pressure	1	\$41.99 ea
13	B105	bushing, brass, 3/8"mpt x 1/4"	1	\$3.19 ea
14	AH195	sol hose, 57" x 1/4", (OAL), m	1	\$37.99 ea
15	B142A	coupling, brass, 1/4" fpt x 1/4" fpt	1	\$4.49 ea
16	H462	housing, filter, 2 piece	1	\$2.99 ea
17	G077	filter, cone	1	\$2.99 ea
18	B101	qd. brass, 1/4" m	1	\$8.49 ea
19	H655	coupler, 1-1/2" barb to barb fitting	1	\$8.99 ea
20	H300	cuff, hose, 1-1/2 x 1-1/2, wife	2	\$5.99 ea
21	G147	strap, velcro 1.5" x 12"	3	\$3.49 ea
22	H504	vac. hose, 4' x 1-1/2", 1 sw cu	1	\$19.49 ea

DATE	3/2013
NAME	MJL/rlp
mytee PRODUCTS, INC.	8908 (891191)
TITLE	Spinner, Counter
SIZE	DWG. NO. 8908
REV	OD
C	SCALE: 1:4
	SHEET 1 OF 1

PROPERTY AND CONFIDENTIAL. THIS DRAWING IS THE SOLE PROPERTY OF MYTEE PRODUCTS, INC. ANY REPRODUCTION IN WHOLE OR IN PART WITHOUT THE WRITTEN PERMISSION OF MYTEE PRODUCTS, INC. IS PROHIBITED.

Order parts at: <http://www.mytee.com/products/product.php?id=8908>

Part prices are subject to change.

GENERAL INFORMATION

Dear Customer:

Congratulations on the purchase of your new Spinner®. As you are already aware, the scene of the equipment world is becoming more high tech, and we at Mytee Products Inc. strive to keep you on the cutting edge with superior quality and technology.

Keep in mind that the Spinner® is a machine, so neglect or abuse will cause unnecessary damage and void the warranty. However with simple maintenance the Spinner® will give quality performance for many years to come.

If warranty questions arise, please consult your user manual or get in touch with your distributor. If you have questions about maintenance, replacing parts or ordering parts, please call an authorized Mytee Products Inc. Service Center. To see an updated list, visit our website at www.mytee.com

Before you begin cleaning, please read your manual thoroughly.

Sincerely,
Mytee Customer Care Dept.

Parts and Service

Repairs, when required, should be performed by Mytee service personnel or Mytee authorized Service Center using Mytee original replacement parts and accessories. Call Mytee for repair parts or service. Please specify the Model and Serial Number when discussing your machine.

Name Plate

The Model and Serial Number of your machine are shown on the Nameplate on the back panel of the machine. This information is needed when ordering repair parts for the machine. Use the space provided on the front cover to note the Model and Serial Number of your machine for future reference.

Unpacking the Machine

When the machine is delivered, carefully inspect the shipping carton and the machine for damage. If damage is evident, save the shipping carton so that it can be inspected by the carrier that delivered it. Contact the carrier immediately to file a freight damage claim.

Caution and Warnings

Symbols

Mytee uses the symbols below to signal potentially dangerous conditions. Always read this information carefully and take the necessary steps to protect personnel and property.



DANGER

Is used to warn of immediate hazards that will cause severe personal injury or death.



WARNING

Is used to call attention to a situation that could cause severe personal injury.



CAUTION

Is used to call attention to a situation that could cause minor personal injury or damage to the machine or other property. When using an electrical appliance, basic precautions should always be followed, including the following: Read all instructions before using this machine. This product is intended for commercial use only.



WARNING

To reduce the risk of fire, electrical shock, or injury:

1. Read all instructions before using equipment.
2. Use only as described in this manual. Use only manufacturer's recommended attachments.
3. Always unplug or disconnect the appliance from power supply when not in use.
4. Do not allow to be used as a toy. Close attention is necessary when used by or near children.
5. Do not use in areas where flammable or combustible material may be present.
6. Do not leave the unit exposed to harsh weather elements. Temperatures below freezing may damage components and void warranty.
7. Use only the appropriate handles to move and lift unit. Do not use any other parts of this machine for this purpose.
8. Keep hair, loose clothing, fingers, and all parts of the body away from all openings and moving parts.
9. Use extra care when cleaning on stairs.
10. When cleaning and servicing the machine, local or national regulations may apply

to the safe disposal of liquids which may contain: chemicals, grease, oil, acid, alkalines, or other dangerous liquids.

11. Do not leave operating unattended.



CAUTION

Use only non-flammable liquid in this machine.

Preparation

1. Remove furniture from cleaning area, and sweep or vacuum.
2. Protect cabinets, carpets, walls and painted surfaces from spray with drop cloths or plastic.
3. Identification – Identify the type of floor you are going to clean. This step is vital, since each flooring type may call for different chemicals, brushes and equipment. Basic flooring types are: resilient (vinyl, VCT, linoleum), which is generally softer; stone (terrazzo, quarry, ceramic, brick, concrete) made of natural materials; and stone substitute (marble, slate and granite), which mimics stone.
4. Application – Once the flooring is identified, apply the appropriate type of cleaning (or in the case of resilient flooring, stripping) chemical. On tile surfaces, spray chemical evenly over tile and grout lines, allowing it to pool in the lines.
5. Emulsification – Chemicals typically require dwell time to remove the dirt and grime driven into the surface. The dirtier the floor, the longer the chemicals may need to dwell. Without proper dwell time, chemicals will not be effective.
6. Agitation and Elimination – Agitate the chemical into the floor to facilitate cleaning using a Spinner® floor machine connected to an extractor. The Spinner® lays down high-pressure spray to agitate and rinse, and vacuums up the solution simultaneously, eliminating it from the surface.

Spinner® Operation

1. Attach the Vacuum and Solution Hoses to the extractor.
2. Attach the Solution Hose to the Male Quick Disconnect and the Vacuum Hose to the Wand Tube.
3. Turn on the extractor to engage the vacuum, while making sure the bottom of the Spinner™ is flush with the cleaning surface to ensure proper suction.
4. Squeeze the Spinner's™ high-pressure trigger gun to dispense solution on to the surface.
5. Hold the machine at waist level and use a back-and-forth motion.

After Use

1. Unplug.
2. Inspect hoses and replaced if damaged.
3. After each use, wipe floor machine with a clean, soft, damp cloth.
4. Do not expose to rain.
5. Store indoors. In a clean, dry place.
6. Do not store sitting on brush.

Maintenance Schedule

Maintenance item	Daily	Once a week
Clean and inspect hoses	x	
Check for loose hardware	x	
Clean machine with clean, soft damp cloth	x	
Inspect spray jets once a week.		x
Use Mytee® System Maintainer 3601 every 100 hours. Circulate through the hose and tool.		x

FAQs

Q – How much does my Spinner® weigh and dimensions?

- A – Model 8901 – Weight: 23 pounds; Dimensions: 13"x13"x53"
Model 8902 – Weight: 23 pounds; Dimensions: 13"x13"x53"
Model 8903 – Weight: 21 pounds; Dimensions: 13"x13"x53"
Model 8904 – Weight: 21 pounds; Dimensions: 23"x14"x51"
Model 8907 – Weight: 18 pounds; Dimensions: 13"x13"x53"
Model 8908 – Weight: 8 pounds; Dimensions: 14"x12"x12"

Q—What can I do to extend the life of my Spinner®?

- A – Follow the suggested maintenance schedule in this manual.

Trouble Shooting

The Spinner® is not spinning.

1. Inspect the jets to make sure they are not clogged.
2. Check the machine for a normal flow of solution by disconnecting the Solution Hose from the Spinner® and letting the liquid run freely.
3. If the solution's flow is disrupted, use Mytee® System Maintainer 3601.
4. Try to spin the unit by hand. If it does not move, replace the swivel. If it moves, the seal may need rebuilding. Take the Spinner® to your local service center.

Guidelines

1. For ease of use, keep the brush and manifold balanced and flat.
2. Adjust the handle at a comfortable height for the operator; making sure the brush remains balanced before starting the extractor.
3. The Spinner® operates differently according to the surface. Smooth surfaces offer more resistance than surfaces such as tile and grout. If you experience resistance of movement, adjust the vacuum release slot to release air from the Vacuum Hose.

Replacement Parts

8901, 8902, 8903, and 8904
 Brush – No. G080
 Swivel – No. H926
 Rebuild Kit – No. H927

8907 and 8908
 Brush – No. G089
 Swivel – No. H926
 Rebuild Kit – No. H927

Warranty

MYTEE LIMITED WARRANTY POLICY

Mytee Products, Inc. endeavors to provide high quality products and product support to its customers and therefore backs up all of its new products purchased from Mytee Products Inc. ("Mytee") or any authorized Mytee distributor/service center with this limited warranty. This limited warranty begins on the date of the customer's purchase and is valid and available to the original purchaser only. Mytee's products are for commercial use only and are not intended for personal, family or household uses.

HOWEVER, OTHER THAN SET FORTH HEREIN, MYTEE GIVES NO WARRANTY, EXPRESS OR IMPLIED, AS TO DESCRIPTION, QUALITY, MERCHANTABILITY, FITNESS FOR ANY PARTICULAR PURPOSE, PRODUCTIVENESS, INFRINGEMENT, OR OTHER MATTER, OF ANY GOODS WHICH MYTEE SHALL SUPPLY. THERE ARE NO WARRANTIES WHICH EXTEND BEYOND THE DESCRIPTION ON THE FACE HEREOF. MYTEE SHALL IN NO WAY BE RESPONSIBLE FOR THE PROPER USE AND APPLICATION OF THE GOODS. MYTEE NEITHER ASSUMES NOR AUTHORIZES ANY OTHER PERSON TO ASSUME FOR MYTEE ANY OTHER LIABILITY IN CONNECTION WITH THE SALE OF MYTEE'S GOODS. THIS LIMITED WARRANTY POLICY MAY BE CHANGED OR WITHDRAWN BY MYTEE AT ANY TIME WITHOUT NOTICE.

HOUSING LIFETIME LIMITED WARRANTY: Mytee warrants that rotationally molded housing and tanks will be free from manufacturing defects, defects in workmanship, and defects in material for the life of the part. Replacement cost does not include the cost of shipping or labor.

PUMP, VACUUM MOTOR AND HEATER 1-YEAR LIMITED WARRANTY: Mytee warrants that pumps, vacuum and floor machine motors, and heaters will be free from manufacturing defects, defects in workmanship, and defects in material for one (1) year from the date of original purchase. This warranty does not apply and is void if the pump, vacuum motor, or heater has worn brush motors, water damage, chemical build-up, chemical damage, or evidence of abuse, neglect or tampering. This warranty covers the cost of replacement or repair only and does not cover shipping or labor costs.

WEAR PARTS 90-DAY LIMITED WARRANTY: Mytee will replace all wear parts for 90 days from the date of original purchase. "Wear parts" are items which wear out as a result of usage or the passage of time and are consumed despite attempts to maintain them, such as gaskets, wheels, brass, cords, wires, electrical terminals, hoses, switches, thermostats, plastisol parts, filters, bearings, brushes, solenoids, o-rings, bulbs, heating elements, castors, or other parts deemed wear items in Mytee's sole discretion. This warranty covers the cost of replacement only and does not cover shipping or labor costs.

LIMITATION OF DAMAGES: THE REMEDY OF REPLACEMENT OR REPAIR OF ANY DEFECTIVE GOODS SHALL BE THE EXCLUSIVE REMEDY UNDER ANY WARRANTY MADE BY MYTEE, WHETHER EXPRESS OR IMPLIED. IN NO EVENT SHALL MYTEE BE LIABLE FOR ANY INCIDENTAL OR CONSEQUENTIAL DAMAGES, PROPERTY DAMAGES, OR PERSONAL INJURIES.

All limited warranties are void for, and Mytee does not warrant in any way, any product that evidences misapplication, improper installation, abuse, lack of maintenance, negligence in use or care, abnormal use, alteration of design, use of incompatible or corrosive chemicals, use in a rental service, and/or servicing, installation of parts, or repairs by anyone other than Mytee or a Mytee authorized distributor or service center. Mytee may make changes in products it manufactures and markets at any time; these changes are made without obligation to change, retrofit, or upgrade any product previously sold or manufactured.

Mytee has no obligation to honor the limited warranties set forth herein unless the original purchaser, promptly upon discovering the warranty claim and prior to continuing to use the product, contacts Mytee or a Mytee authorized distributor or service center to describe the claim and to receive and follow instructions for documenting and resolving the claim. In addition, the purchaser must provide the product to which the claim applies to Mytee or a Mytee authorized distributor or service center for a thorough inspection.

If any provision or portion of this limited warranty policy is found to be unenforceable, then the remaining provisions and portions shall remain valid and enforceable. If any provision or portion of this limited warranty policy is found to be limited by law, then that provision or portion shall be construed to make it effective within the bounds of law. For example, if there are legal limitations on the duration of warranties, the warranties made herein shall be construed to have the minimum duration required by law, or, if there are legal limitations of exclusion of remedies, the exclusions made herein shall be construed to apply to the fullest extent possible without violating the law.

The validity, construction and performance of this warranty policy shall be governed by the laws of the State of California, without respect to conflicts of laws principles. The exclusive jurisdiction of any legal action arising from or related to this warranty policy shall be in the State of California and no legal action shall be commenced elsewhere.

Return Material Authorization Procedure

It is the responsibility of any Authorized Service Center (ASC) or Distributor with written authorization to ensure the Customers equipment is repaired as soon as possible. Only Mytee Products Inc. or it's authorized dealers with written authorization, service centers, and agents may make warranty repairs on these products. All others do so at their own risk and expense.

The Distributor must follow Mytee Products, Inc. standard RMA procedure:

1. When a repair falls within the Warranty time period for a piece of equipment, the Distributor will fill out a RMA/Warranty claim form. This form will act as a repair order to replace any defective parts.
2. All defective parts must be returned to Mytee Products, Inc. with the RMA/claim form for evaluation at the customer's expense. This shipping is non-refundable. All warranty claims are subject to an evaluation by Mytee Products, Inc. to determine if warranty will be approved. Any credit for repair and/or parts will only be issued upon evaluation and approval from Mytee Products, Inc.
3. When Warranty is approved, the Distributor's account will be credited for the replacement part(s). Mytee Products, Inc. will ship the warranted replacement part(s) to the Distributor prepaid. If Warranty is denied the Distributor's account will not be credited for any parts sent for this claim.

NOTES



Mytee Products Inc.
13655 Stowe Dr.
Poway, CA 92064
www.mytee.com
FX 858.679.7814

© 2014 Mytee Products Inc.
Printed in the U.S.A.