

Motic®

Motic Images Plus Version 2.0 ML

Quick Start Guide



CD-ROM:...\\Manual*.pdf

Contents

Installing the Driver	4
Motic Images Plus 2.0 ML	13
Precise Calibration	13
Capturing Images and Video	18
Taking Measurements	20
Customizing Your Settings	21
Adding Sound to Your Files.....	23
How to Play Sound.....	24
How to Combine Images.....	24

Note:

The intention of this guide is to provide quick instructions to key tasks of the Motic Images Plus software. If more detail is needed or what you are looking for is not contained in this guide, please consult the documentation that comes with your microscope or visit our website <http://www.motic.com>.

Installing the Software

Before installing Motic Images Plus 2.0 ML, please read this chapter carefully, and perform setup by following the step-by-step instructions.

Preparation for Software Installation

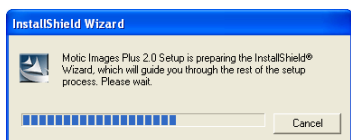
1. Get your Motic microscope ready, and check that the USB cable of microscope is not connected to the USB port of the computer.
2. Microscope is powered up.

Installing the Software

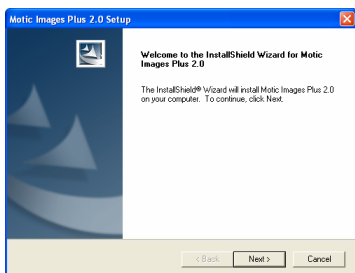
Follow the instructions outlined below to install Motic Images Plus 2.0 ML (images from Windows XP, similar processes for Windows 2000).



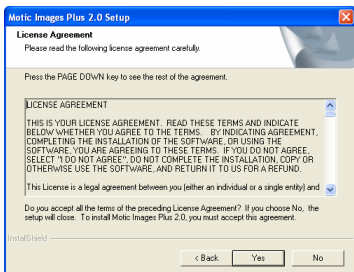
Insert the CD-ROM into your CD-ROM drive and the setup wizard appears automatically.



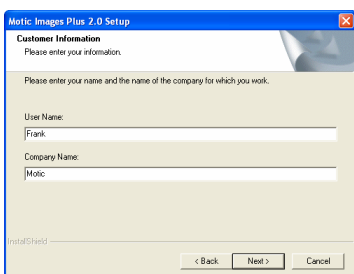
The Motic Images Plus 2.0 ML Installer prompts Setup being processed.



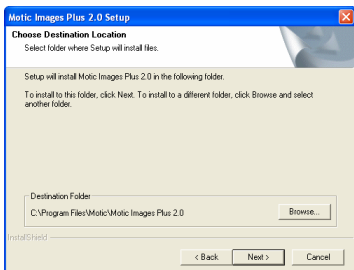
Get ready for installation as the installer informs and click "Next".



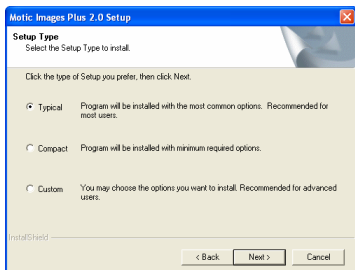
To install Motic Images Plus 2.0 ML, you must accept all the terms of the Software License Agreement. If you agree, click “Yes” to continue. If you do not, click “No” and the installation will be cancelled.



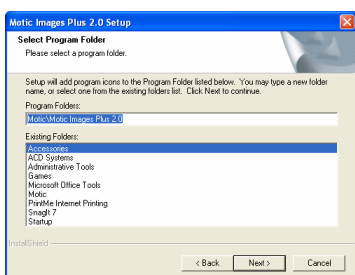
Please fill in the blanks with your name and company name before continuing with the installation process. Click “Next”.



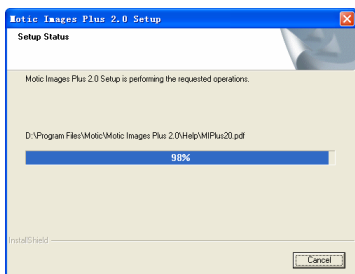
The Choose Destination Location dialog box will appear. Accept the default destination path “C:\ Program Files\ Motic\ Motic Images Plus 2.0” or click “Browse” to select your own path. Then click “Next”.



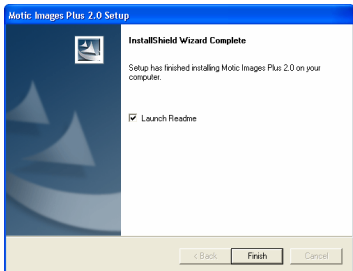
Select one of the 3 Setup types to install; before file copying starts, you may review or change the settings by clicking “Back”. Begin program installation by clicking “Next”.



Accept the default program folder “Motic”, or specify a different folder by entering your own folder name or selecting from an existing folder and click “Next”.



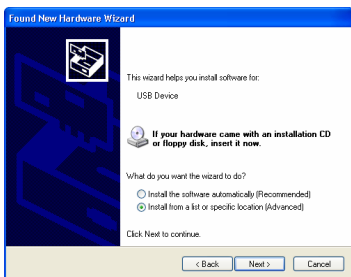
Copying of program files begins. (If you wish, you can choose to install the Adobe reader and DirectX9 before the copying of the program files starts).



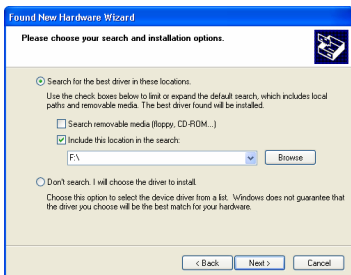
When all the program files have been copied to your computer, click “Finish” .It is highly recommended that you restart your computer.

Installing the Driver

Installing the Driver in Windows XP:



Ensure the Moticam350 (2E) device is connected to the computer. The “Found New Hardware Wizard” will then appear. Select “Install from a list or specific location (Advanced)”, and click “Next”.



Select the item “Include this location in the search”, and then insert the CD. Click “Browse” to select the driver.

Locate the “2E” folder under “Driver” in the CD-ROM (or select the corresponding driver according to the instructions on the CD case, or see the chart below) and click “OK”.



Device	Interface	Driver
Camera 3 PAL	USB 2.0	M230
	USB 1.0	M210
Camera 3 NTSC	USB 2.0	M230
	USB 1.0	AD640
MC1001/MC2001/ MC 3001	USB 2.0	Motic MC Camera V3
MC1001/MC2001/ MC3001/1002/2002 (for Vista)	USB 2.0	Motic USB2 Camera
MC352	USB 1.0	MC352
MC352+	USB 1.0	MC352+

Note: If you use M230, please ensure that:

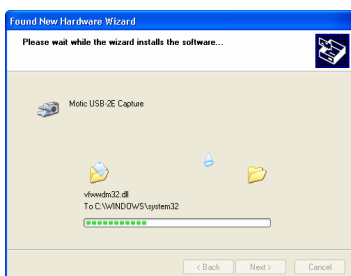
1. The driver is installed under Windows XP or Windows 2000 + SP4 operating system;
2. USB 2.0 driver and DirectX9.0b (or higher version) have been correctly installed.



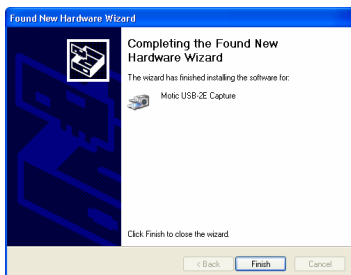
Please confirm the destination path, and click "Next".



Click "Continue Anyway" to continue.



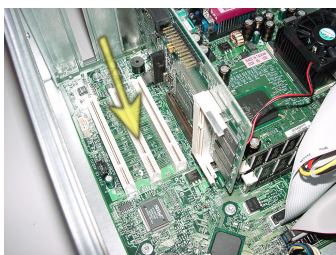
Files will be copied to your computer.



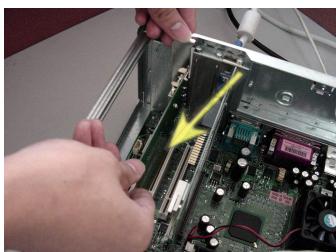
Click "Finish".

Installing the Motic CapL3 Driver

(If you have not yet purchased a capture card from us, such as L311, L312, L320 etc, please skip the following text.)



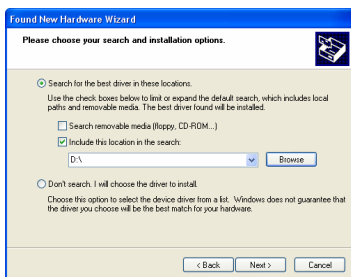
Left is the installation location of the MoticCap L3xx, the PCI slot, to which the contact footing of the said card is to be inserted.



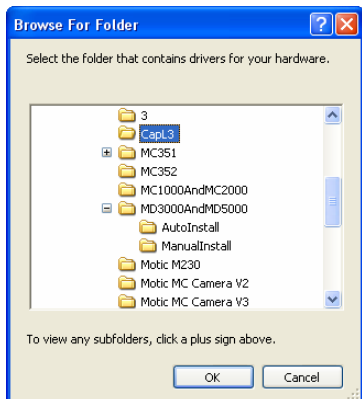
Press the card down with the input sockets plate attached to the sockets panel (usually at the back) of your computer.



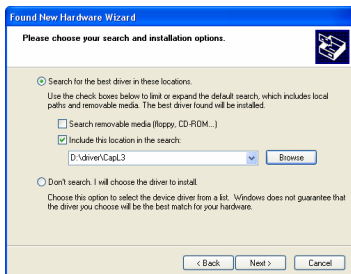
The “Found New Hardware Wizard” will then appear. Select “Install from a list or specific location (Advanced)”, and click “Next”.



Select the item “Include this location in the search”, and then insert the CD. Click “Browse” to select the driver.



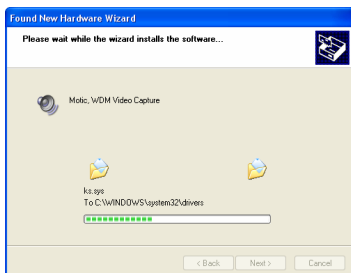
Locate the “CapL3” folder under “Driver” in the CD-ROM and click “OK”.



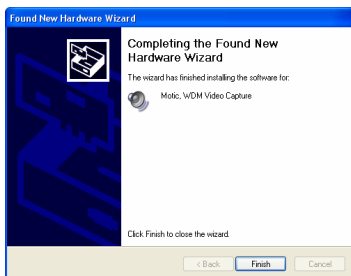
Please confirm the destination path, and click "Next".



Click "Continue Anyway" to continue.



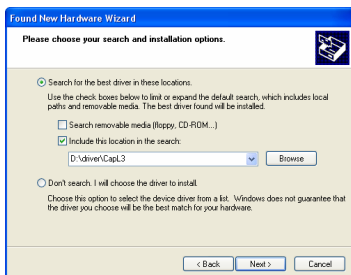
Files will be copied to your computer.



Click "Finish".



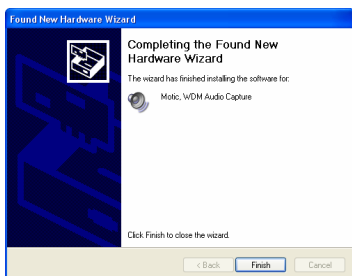
The "Found New Hardware Wizard" will then appear. Select "Install from a list or specific location (Advanced)", and click "Next".



Please confirm the destination path, and click "Next".



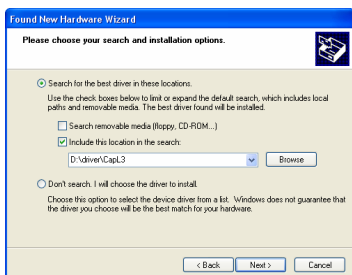
Click "Continue Anyway" to continue.



Click "Finish".



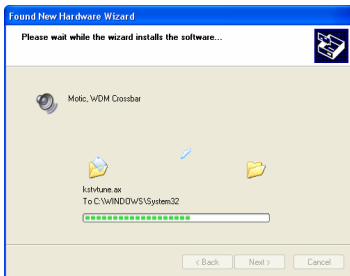
The "Found New Hardware Wizard" will then appear. Select "Install from a list or specific location (Advanced)", and click "Next".



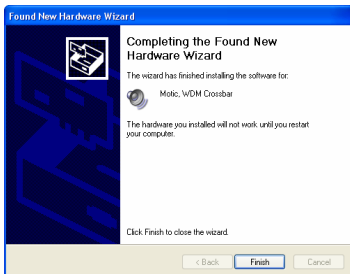
Please confirm the destination path, and click "Next".



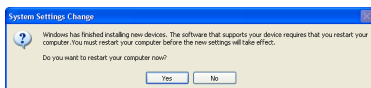
Click "Continue Anyway" to continue.



Files will be copied to your computer.




Click "Finish".



Restart your computer by clicking "Yes".

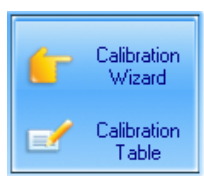
Motic Images Plus 2.0 ML

Motic Images Plus 2.0 ML is a multi-media software offered by Motic China Group Co., Ltd. It is especially designed for individual users and provides advanced and easy-to-use functions for editing, analyzing and measuring images. The Motic Images Plus 2.0 ML interface comes in two styles: Plus style and Standard style. The default style is Standard style. You may change the style by clicking the Setting button  from the toolbar and selecting the “Interface” tab from the popup “Settings” dialog box to specify a style. Then, restart the software to display it in the selected style.

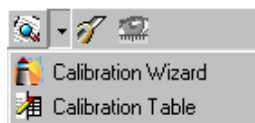
Precise Calibration

Calibration is a very important step to be taken before using the Motic Images Plus 2.0 ML measuring system as it will ensure the accuracy of the system’s measurements.

For Plus style, directly click the corresponding buttons on the Measure tool bar to conduct calibration operation; for Standard style, click on the drop-down arrow at the right of the Calibration button on the Measure tool bar to display the following drop-down menus.



Plus style



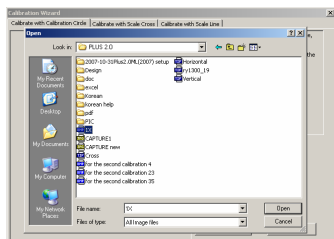
Standard style

Select the Calibration Wizard command to display the Calibration Wizard window. To select a calibration method, click on the corresponding tab.

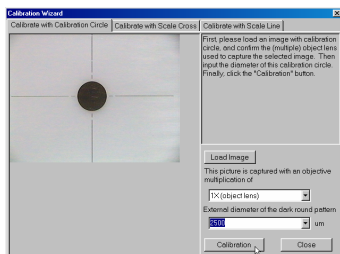
Motic Images Plus 2.0 ML provides three calibration methods, Calibrate with Circle, Calibrate with Scale Cross and Calibrate with Scale Line. The following images are taken from Standard style, Plus style images are similar.

1. Calibrate with Calibration Circle

(i) To calibrate with a calibration circle, select the Calibration Wizard command to display the Calibration Wizard window. Click on the Calibrate with Calibration Circle tab to display the corresponding panel.



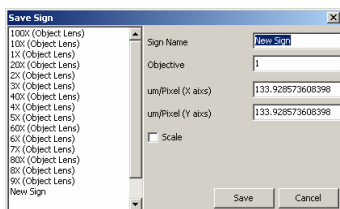
Click “Load Image” to display the Open Image files dialog box from which calibration circles may be selected for calibration. Click “Open” to load the selected image.



(ii) Confirm the objective lens used to capture the selected image, then input the diameter of the calibration circle. Click “Calibration” to complete the calibration process.


Note:

Use the appropriate calibration circle slide and magnification suited to your microscope.



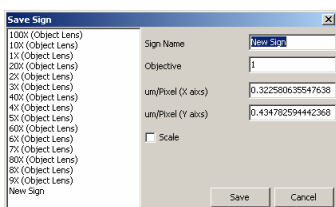
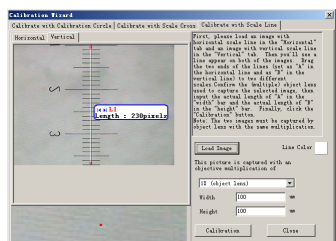
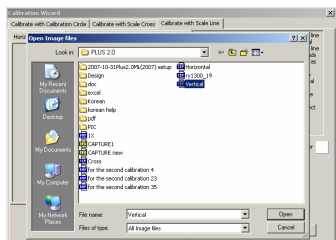
(iii) The Save Sign dialog box will display after clicking "Calibration". Click "Save" in the dialog box to save the calibration results and use them for measuring.

(iv) When calibration is complete, click “Close” to close the Calibration Wizard window.

(iii) When the image is loaded, a line will appear on it. Modify its color by clicking the Line Color button  to display the Color Palette where a color for the line may be chosen.

Drag the two ends of the line (set as "A" on the horizontal line and as "B" on the vertical line) to two different scales. The magnifier window under the image window will help users accurately place the points.

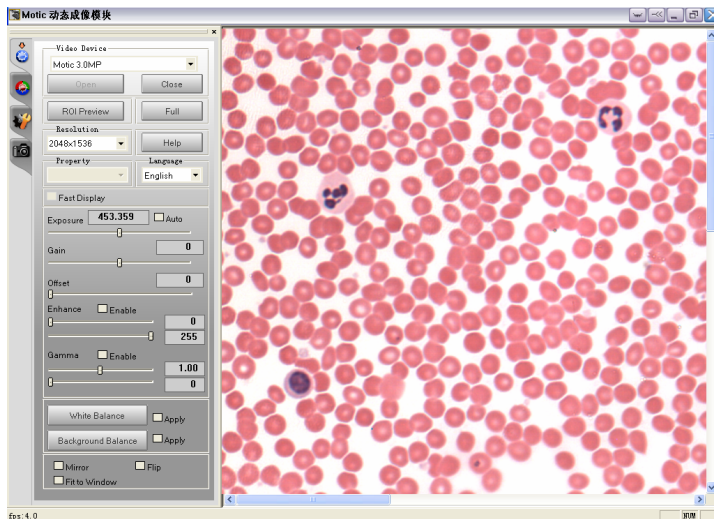
Confirm the objective lens used to capture the selected images and then input the actual length of "A" in the "Width" bar and the actual length of "B" in the "Height" bar. Click "Calibration" to complete the calibration process.



(iv) The Save Sign dialog box will display after clicking "Calibration". Click "Save" in the dialog box to save the calibration results and use them for measuring.

(v) When calibration is complete, click "Close" to close the Calibration Wizard window.

3. The capture window will then display.

**Note:**

1. For detailed operation instruction, please consult the Help that comes with this module.
2. It is recommended that you download the Xvid Codec in order to capture smaller size video files.

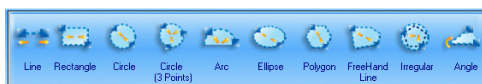
Taking Measurements

Note:

First, make sure that your system has been properly calibrated prior to taking any measurements.

Measuring

1. Select any of the Measurement tools by clicking on the corresponding button on the Measure tool bar.



Plus style



Standard style

2. From the Measure Control Panel, select the magnification of the objective lens used. Click the arrow to display the drop down list of objective lenses.
3. Move the cursor onto the image window and click and drag the mouse over the area / distance to be measured. Change the measurements by clicking and dragging the mouse on the defined area.
4. Click the right mouse button on another part of the image to display a shortcut menu. Select “Freeze” or “Lock” to save the measurements.

Note: Measurements may be unlocked, but to cancel the freeze status, the Undo command must be selected.

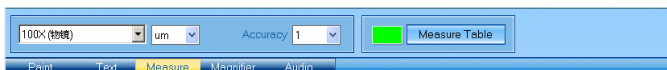
Erasing a Measurement

To erase a measurement, apply the Undo command of Edit menu before saving an image file.

Customizing Your Settings

Configuring your measurement settings

1. By clicking the Measure tab on the Control Panel, measurement settings may be customized.



Plus style





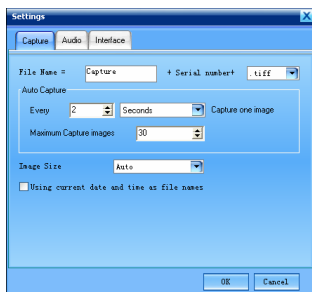
Standard style

The measurement units and accuracy parameters (how many digits to display after the decimal point) may also be set here.

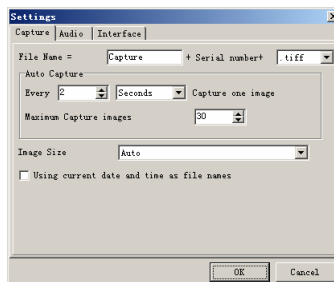
2. After performing a measurement, click the right mouse button to display a shortcut menu where, by selecting the Unit command, the measurement units may be changed. If the Properties command is selected, a dialog box will appear which allows users to change the measurement data colors and line properties.

Configuring your image and video capture settings

Click the Setting button  in the Plus Style or the Setting button  in the Standard Style to display the following dialog boxes:



Plus style



Standard style

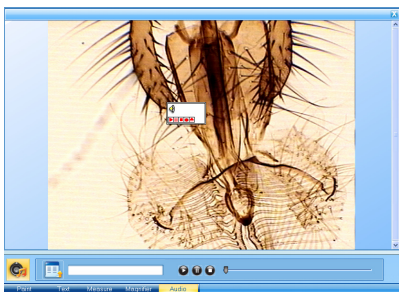
Here, define the size of the images to be captured, how often to capture a frame, and other image and video properties.

Adding Sound to Your Files

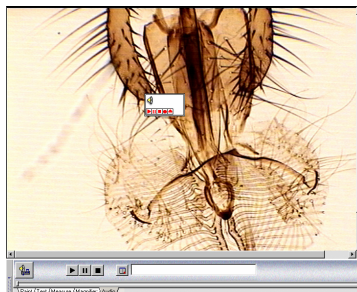
Note:

To add sound to images, a microphone and a sound card with a microphone input jack are needed, as well, files must be saved in SFC format (default).

1. Select the Audio tab on the Control Panel and click the “Add audio to current image” button. Click the left mouse button on the image and a frame will appear.



Plus style



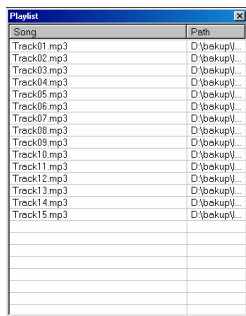
Standard style

Click the “Record” button and the Record dialog box appears. Click the record button on this dialog to begin recording.



2. Click the “Stop” button to stop recording.

How to Play Sound

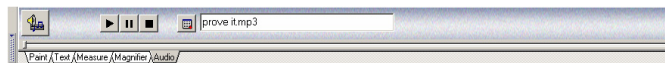


1. Select the Audio tab on the Control Panel and click the Playlist button to display the Playlist dialog box. Click the right mouse button and select the Add command to add sound files to the list.

2. Click the “Play” button and the sound files will be played in turn.



Plus style

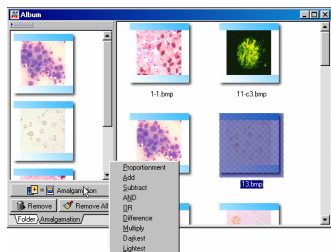


Standard style

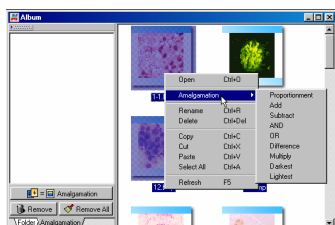
How to Combine Images

The following images are taken from Standard style, Plus style images are similar.

1. Click the Album button to display the Album window. Next, click the “Amalgamation” tab to display the corresponding panel.



2. Click and drag the pictures to be combined into the Amalgamation panel. Click the Amalgamation button and select an amalgamation method to combine them. The combined picture will then appear in the preview window.



3. Or select the pictures to be combined and click the right mouse button. Select the Amalgamation command from the shortcut menu and select a method to combine them. The combined picture will then appear in the preview window.



Motic China Group Co., Ltd.

©1999-2007 Motic China Group Co., Ltd. All rights reserved.

Motic is a registered trademark and service mark of Motic China Group Co., Ltd.

Microsoft, Windows and the Windows logo are registered trademarks of Microsoft Corporation.

All other trademarks are the property of their respective owners.

Design Change: The manufacturer reserves the right to make changes in instrument design in accordance with scientific and mechanical progress, without notice and without obligation.