

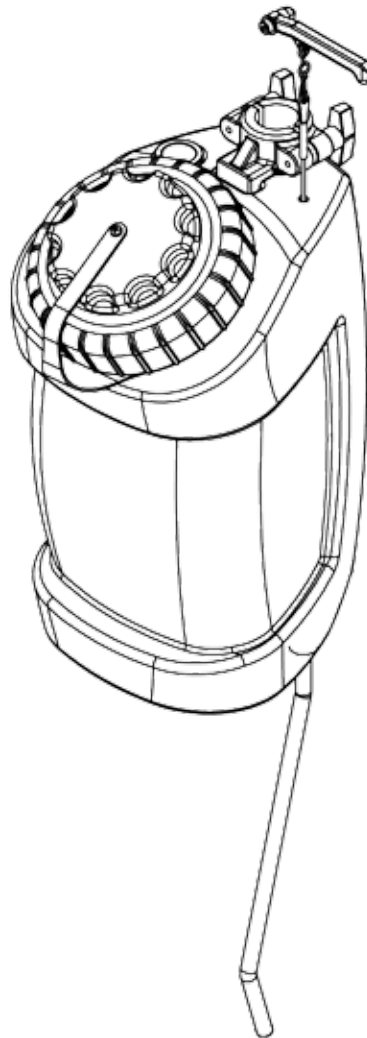
Instructions for ST-4 The Wave™



Please read before use.



Register your product
at www.mytee.com/help



ST-4 Set-up p. 2
General information p.9
Parts p.11

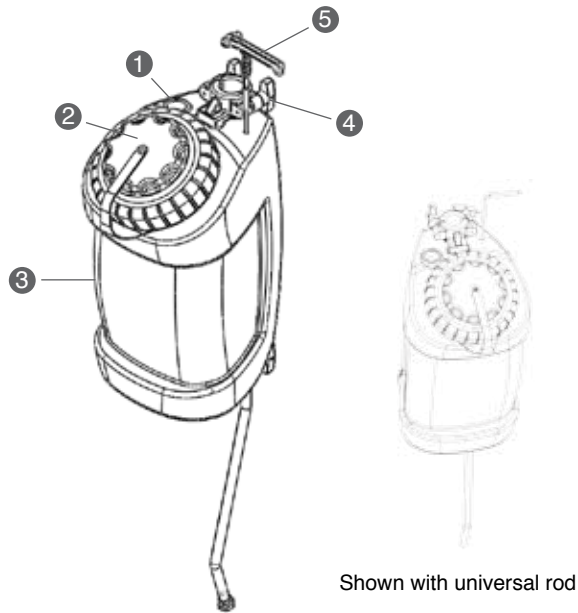
Model # _____

Serial # _____

Form # ADM-ST4

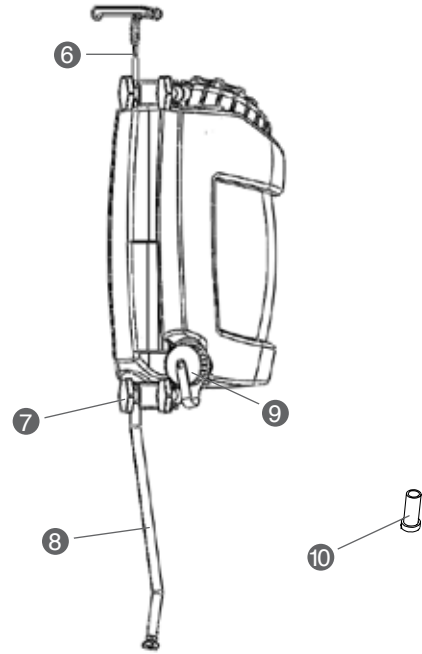
4-12

FRONT



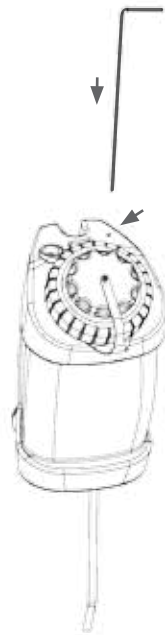
1. Built-in, easy-fill hose
2. Big-mouth fill port and tethered lid
3. Graduated, translucent 4-gallon tank
4. Quick-release clamp system (top)
5. Mytee shampoo tank lever on floor machine

BACK



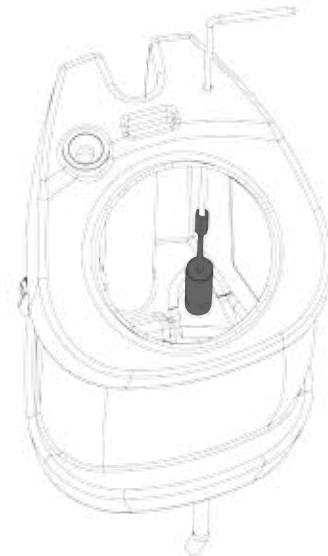
6. Solution-release cable
7. Quick-release clamp system (bottom)
8. Solution hose
9. Drain port and tethered cap
10. 3/8" tube support (used for 13" UltraGlide™)

ATTACHING TO A NON-MYTEE FLOOR MACHINE UNIVERSAL SOLUTION LEVER STEP 1 OF 2



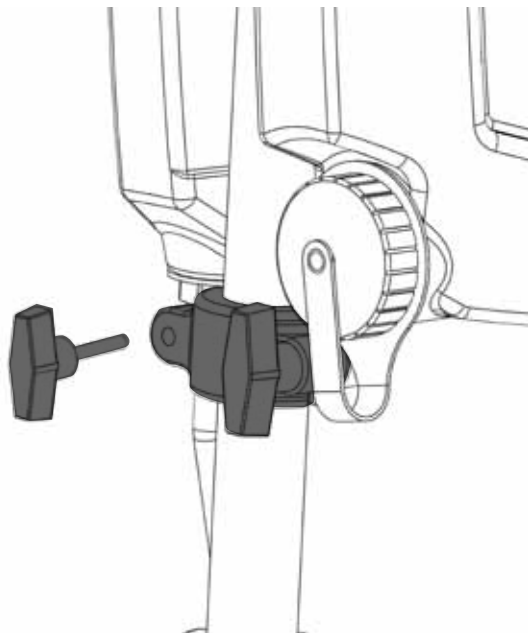
Push lever into small hole on top of tank.

ATTACHING TO A NON-MYTEE FLOOR MACHINE UNIVERSAL SOLUTION LEVER STEP 2 OF 2



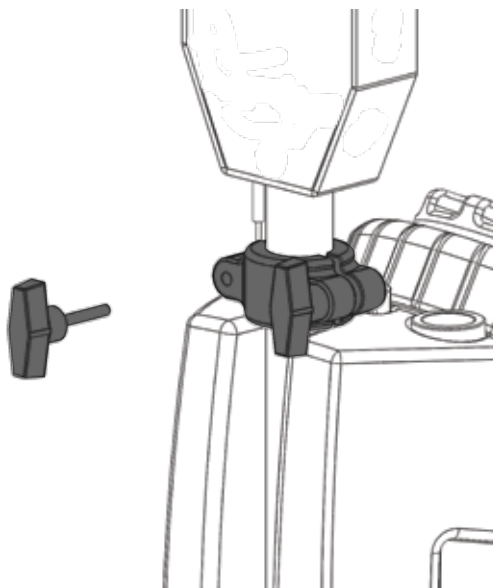
Thread lever into valve until tight.

**QUICK-RELEASE CLAMP SYSTEM (BOTTOM)
ALL FLOOR MACHINES**



To attach The Wave™ to your floor machine, first tighten the screws that connect the bottom quick-release clamp system to the bottom portion of the wand tube. Insert the protruding square portion of the clamp unit into the small groove in the bottom back of the tank. Tighten screws further to secure tank.

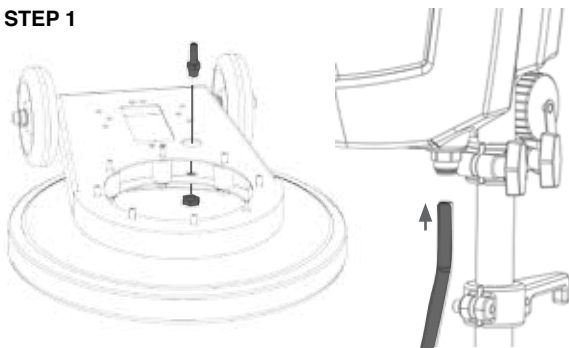
**QUICK-RELEASE CLAMP SYSTEM (TOP)
ALL FLOOR MACHINES**



After securing the bottom of the tank, attach the top clamp system unit just above the unit by tightening thumbscrews. Fit the protruding square portion of the unit into the groove on top of the tank. Tighten screws further to secure the unit.

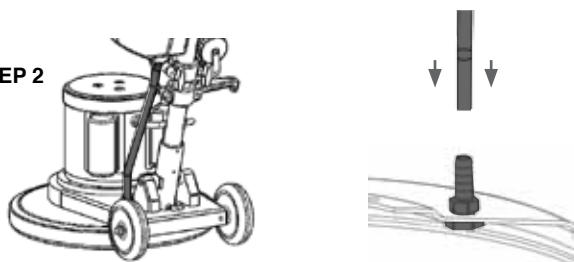
ATTACHING SOLUTION HOSE

STEP 1



Push one end of the hose onto the bottom of the brass valve protruding from the bottom of the tank. Insert brass barb thread-side up into the inlet behind the motor and above the manifold. On the bottom of the manifold attach nut to barb.

STEP 2

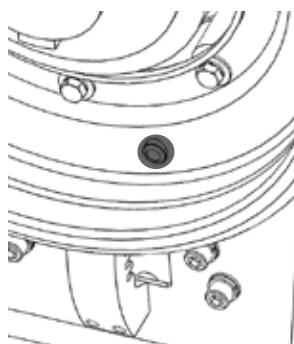
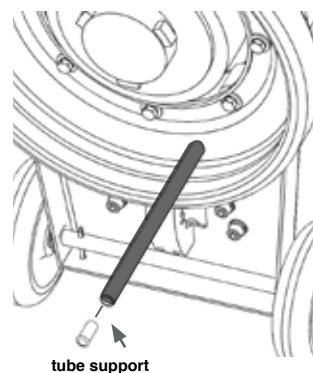


Attach the bottom of the hose to the barb.

**ATTACHING SOLUTION HOSE
FOR RD-13 ULTRAGLIDE™ ONLY**

STEP 1 - Push solution hose through bell housing.

STEP 2 - Attach tube support to solution hose.



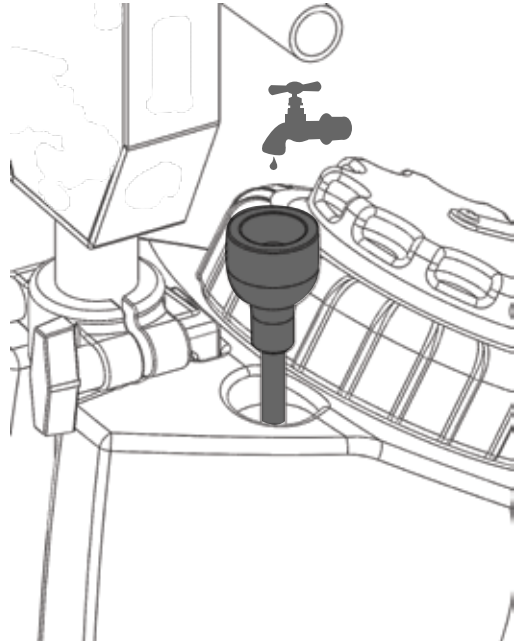
STEP 3 - Pull solution hose back through the bell housing until tube support is fastened.

RELEASING THE SOLUTION



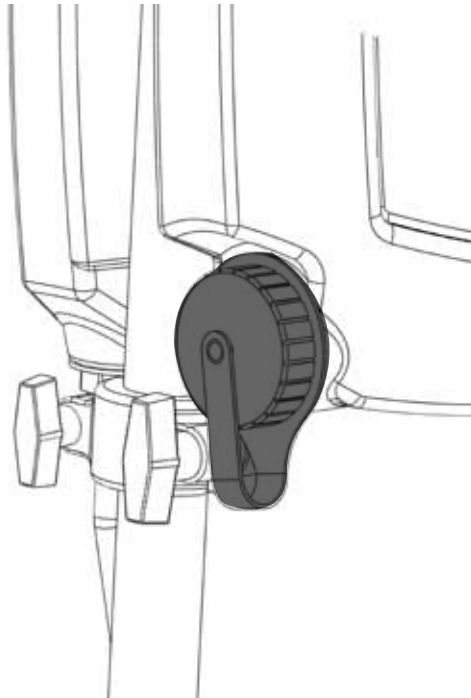
Pull up on the universal rod on the shampoo tank to release solution from the tank into the solution-release hose and onto the floor surface.

BUILT-IN EASY-FILL HOSE



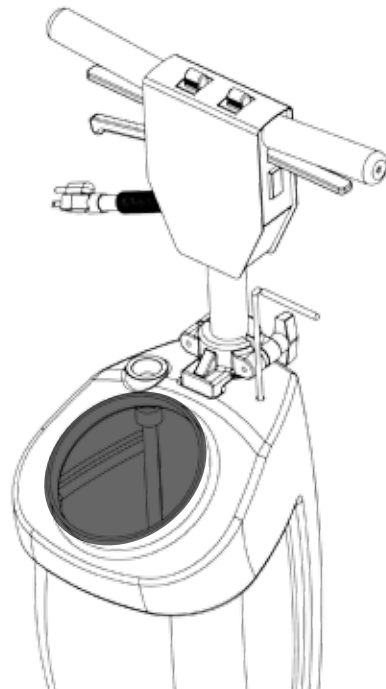
To fill the tank without using a bucket, pull out the built-in easy-fill hose on the top of the tank. Attach to any standard sink faucet and turn on the water.

DRAIN



Unscrew tethered cap and drain.

BIG-MOUTH FILL PORT



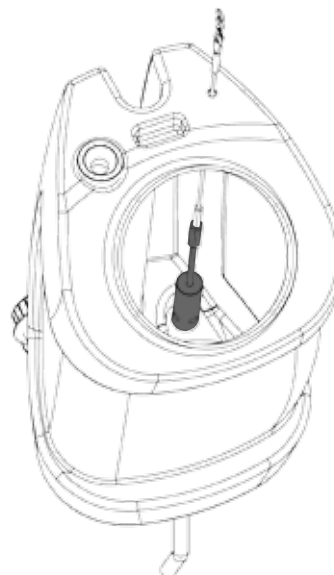
To fill the tank using a bucket, remove the tethered cap on the big-mouth fill port and pour solution. Replace the tethered cap.

ATTACHING SOLUTION-RELEASE CABLE TO MYTEE FLOOR MACHINE STEP 1 OF 2



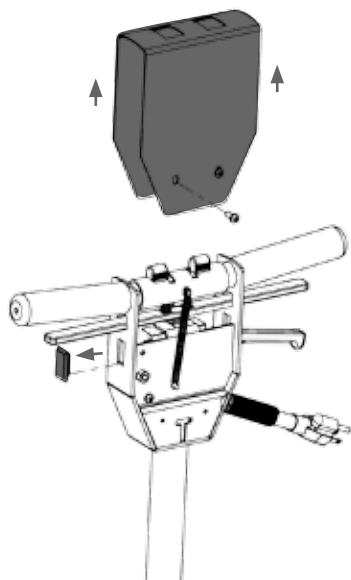
Push solution release cable into small hole on top of tank, thread into valve inside of tank.

ATTACHING SOLUTION-RELEASE CABLE TO MYTEE FLOOR MACHINE STEP 2 OF 2



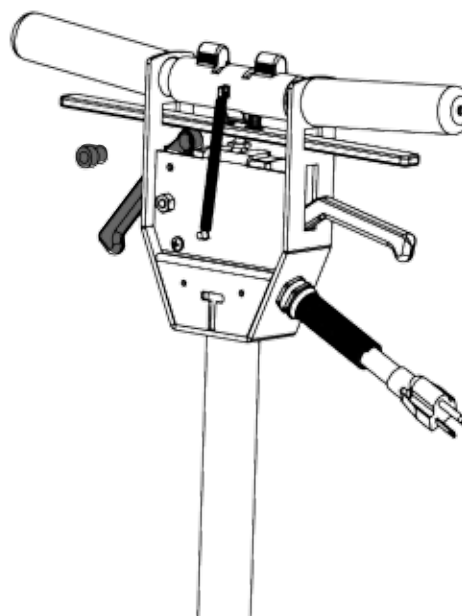
Thread cable into valve inside of tank.

ATTACHING LEVER TO MYTEE FLOOR MACHINES STEP 1 OF 4



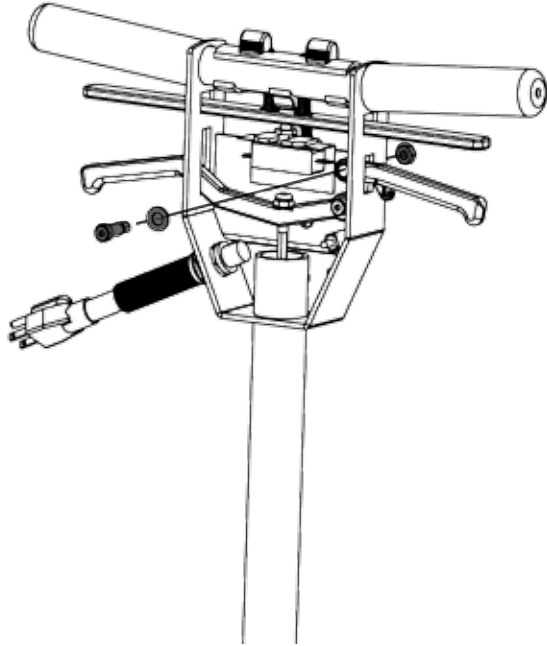
Important: Make sure unit is unplugged before beginning.
Take off switch cover by removing two rear screws. Then lift off. Punch out side cap below safety trigger.

ATTACHING LEVER TO MYTEE FLOOR MACHINES STEP 2 OF 4



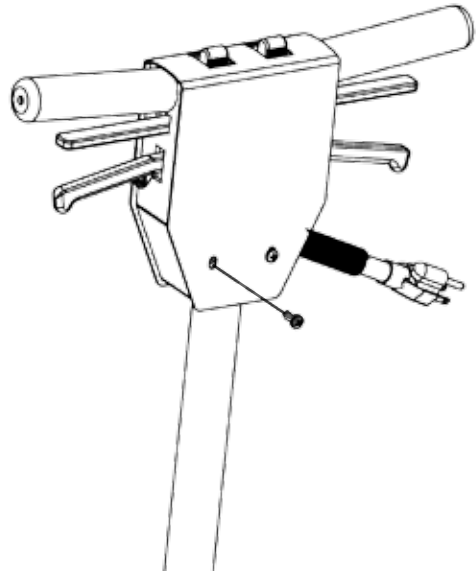
Insert lever onto opening and hold, while inserting spacer into lever.

ATTACHING LEVER TO MYTEE FLOOR MACHINES STEP 3 OF 4



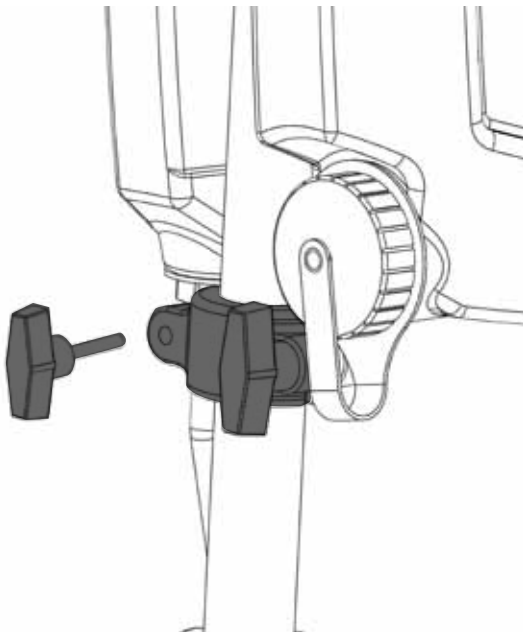
Center lever over threaded hole. Insert shoulder bolt from the front and screw on jam nut from the back.

ATTACHING LEVER TO MYTEE FLOOR MACHINES STEP 4 OF 4



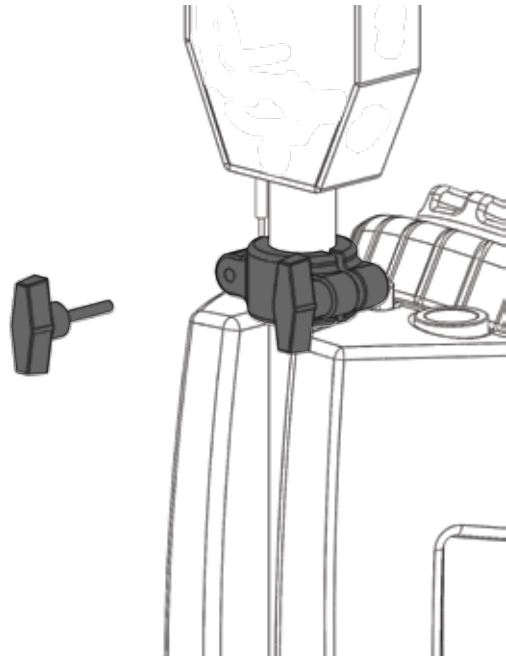
Replace switch cover and screws.

QUICK-RELEASE CLAMP SYSTEM (BOTTOM)



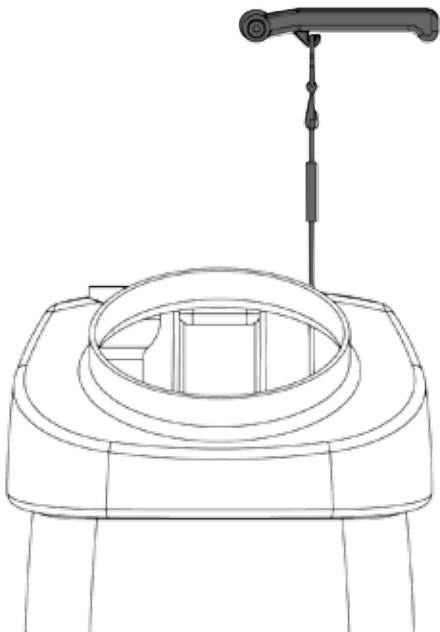
To attach The Wave™ to your floor machine, first tighten the thumbscrews that connect the bottom quick-release clamp system to the bottom portion of the wand tube. Insert the protruding square portion of the clamp unit into the small groove in the bottom back of the tank. Tighten screws further to secure tank.

QUICK-RELEASE CLAMP SYSTEM (TOP)



After securing the bottom of the tank, attach the top clamp system unit just above the unit by tightening screws. Fit the protruding square portion of the unit into the groove on top of the tank. Tighten screws further to secure the unit.

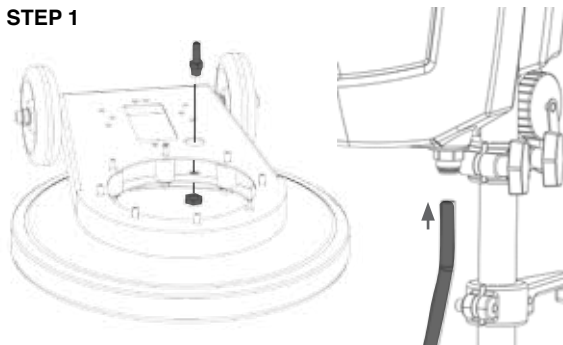
ATTACHING SOLUTION-RELEASE CABLE TO MYTEE FLOOR MACHINE



Hook the solution-release cable to the floor machine's shampoo tank lever.

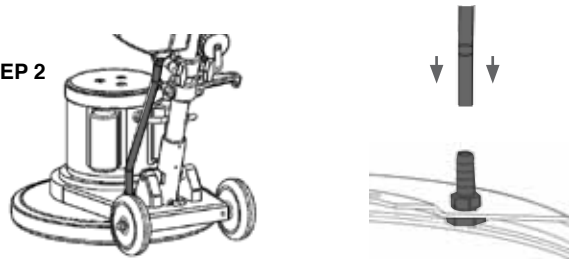
ATTACHING SOLUTION HOSE

STEP 1



Push one end of the hose onto the bottom of the brass valve protruding from the bottom of the tank. Insert brass barb thread-side up into the inlet behind the motor and above the manifold. On the bottom of the manifold attach nut to barb.

STEP 2

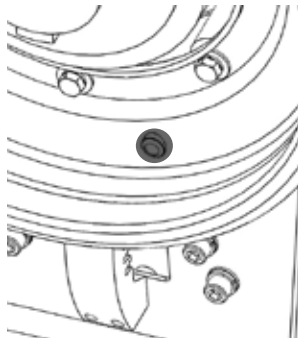
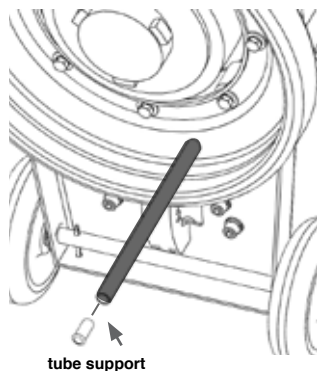


Attach the bottom of the hose to the barb.

ATTACHING SOLUTION HOSE FOR RD-13 ULTRAGLIDE™ ONLY

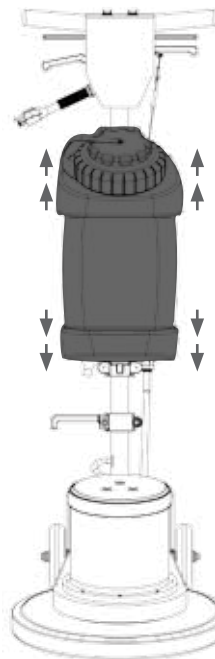
STEP 1 - Push solution hose through bell housing.

STEP 2 - Attach tube support to solution hose.



STEP 3 - Pull solution hose back through the bell housing until tube support is fastened.

IMPORTANT: RELEASE LEVER TEST



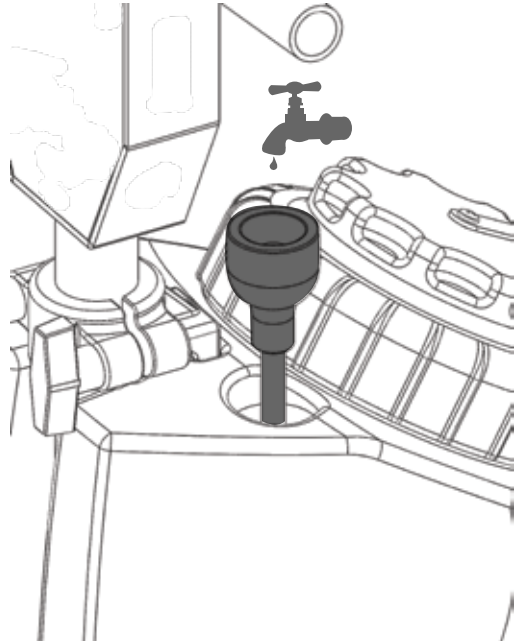
Important: After completing tank installation, test release lever to make sure release valve inside of tank opens and closes properly. Tank may need to be adjusted upward or downward to assure correct cable tension and valve closure.

RELEASING THE SOLUTION



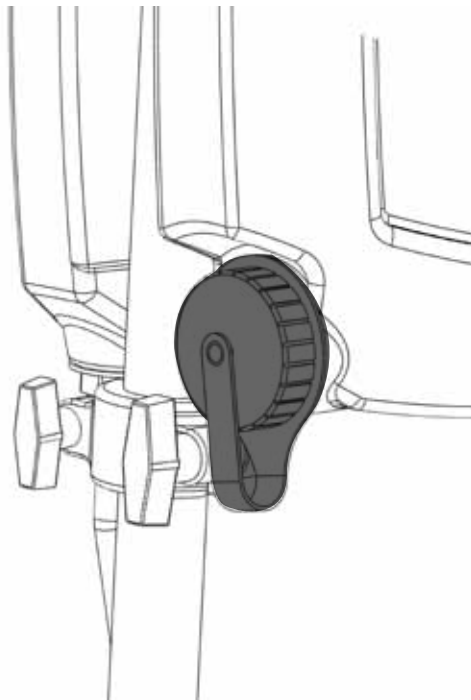
Pull up on the shampoo tank lever on the floor machine to release solution from the tank into the solution-release hose and onto the floor surface.

BUILT-IN EASY-FILL HOSE



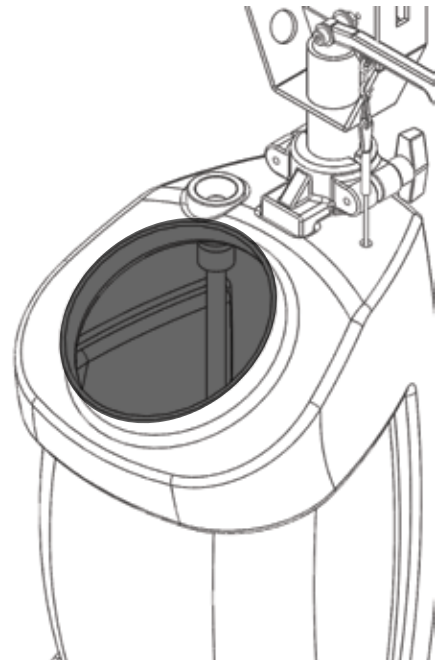
To fill the tank without using a bucket, pull out the built-in easy-fill hose on the top of the tank. Attach to any standard sink faucet and turn on the water.

DRAIN



Unscrew tethered cap and drain.

BIG-MOUTH FILL PORT



To fill the tank using a bucket, remove the tethered cap on the big-mouth fill port and pour solution. Replace the tethered cap.

Dear Customer:

Congratulations on the purchase of The Wave® shampoo tank. As you are already aware, the scene of the equipment world is becoming more high tech, and we at Mytee Products Inc. strive to keep you on the cutting edge with superior quality and technology.

Neglect or abuse will cause unnecessary damage and void the warranty. However with simple maintenance, The Wave® will give quality performance for many years to come.

If warranty questions arise, please consult your user manual or get in touch with your distributor. If you have questions about maintenance, or replacing or ordering parts, call an authorized Mytee Products, Inc. Service Center. To see an updated list, visit our website at www.mytee.com

Before you begin cleaning, read your manual thoroughly.

Sincerely,
Mytee Customer Care Dept.

Parts and Service

Repairs, when required, should be performed by Mytee service personnel or Mytee authorized Service Center using Mytee original replacement parts and accessories. Call Mytee for repair parts or service. Please specify the Model and Serial Number when discussing your machine.

Name Plate

The Model and Serial Number of your machine are shown on the Nameplate on the back panel of the machine. This information is needed when ordering repair parts for the machine. Use the space provided on the front cover to note the Model and Serial Number of your machine for future reference.

Unpacking

When the tank is delivered, carefully inspect the shipping carton and the tank for damage. If damage is evident, save the shipping carton so that it can be inspected by the carrier that delivered it. Contact the carrier immediately to file a freight damage claim.

Caution and Warnings

Symbols

Mytee uses the symbols below to signal potentially dangerous conditions. Always read this information carefully and take the necessary steps to protect personnel and property.



DANGER

Is used to warn of immediate hazards that will cause severe personal injury or death.



WARNING

Is used to call attention to a situation that could cause severe personal injury.



CAUTION

Is used to call attention to a situation that could cause minor personal injury or damage to the machine or other property. When using an electrical appliance, basic precautions should always be followed, including the following: Read all instructions before using this machine. This product is intended for commercial use only.



WARNING

To reduce the risk of fire, electrical shock, or injury:

1. Read all instructions before using equipment.
2. Use only as described in this manual. Use only manufacturer's recommended attachments.
3. Always unplug or disconnect the appliance from power supply when not in use.
4. Do not allow to be used as a toy. Close attention is necessary when used by or near children.
5. Do not use in areas where flammable or combustible material may be present.
6. Do not leave the unit exposed to harsh weather elements. Temperatures below freezing may damage components and void warranty.
7. Use only the appropriate handles to move and lift unit. Do not use any other parts of this machine for this purpose.
8. Keep hair, loose clothing, fingers, and all parts of the body away from all openings and moving parts.
9. Use extra care when cleaning on stairs.
10. When cleaning and servicing the machine, local or national regulations may apply

to the safe disposal of liquids which may contain: chemicals, grease, oil, acid, alkalines, or other dangerous liquids.

11. Do not leave operating unattended.



CAUTION

Use only non-flammable liquid in this machine.

After Use

1. Detach The Wave™ by loosening the quick-release clamps above and below the tank.
2. Empty, clean and dry the unit.
3. Store indoors in a clean, dry place.

Maintenance Schedule

Maintenance item	Daily
Empty and clean after each use	x
Check tank and hoses for leaks or cracks	x

FAQs

Q: How much does The Wave™ weigh and what are its dimensions?

A: 4 lbs. and 11" x 9" x 18".

Q: What comes standard with The Wave™?

A: Upper clamp set with thumb screw; lower clamp set with bolt and two washers; lever with spacer, bolt, nut and washer; and cable clip and dispensing hose with barb and nut.

Q: What can I do to increase the life expectancy of The Wave™?

A: Keep the tank clean and dry, and store in a dry, indoor location between jobs.

Trouble Shooting

Solution is not coming out of the tank or floor machine

1. Make sure the floor machine's shampoo tank lever and other parts are functioning properly.
2. Check that nothing is clogging the solution-release hose.

Solution is leaking from the tank.

1. Make sure the lid and cap are securely tightened.
2. Check hose connections and hoses for leaks or cracks.
3. Make sure the tank is correctly positioned on the floor machine tube, and that the inside valve closes when the release lever is released.

GENERAL INFORMATION

Warranty

MYTEE LIMITED WARRANTY POLICY

Mytee Products, Inc. endeavors to provide high quality products and product support to its customers and therefore backs up all of its new products purchased from Mytee Products Inc. ("Mytee") or any authorized Mytee distributor/service center with this limited warranty. This limited warranty begins on the date of the customer's purchase and is valid and available to the original purchaser only. Mytee's products are for commercial use only and are not intended for personal, family or household uses.

HOWEVER, OTHER THAN SET FORTH HEREIN, MYTEE GIVES NO WARRANTY, EXPRESS OR IMPLIED, AS TO DESCRIPTION, QUALITY, MERCHANTABILITY, FITNESS FOR ANY PARTICULAR PURPOSE, PRODUCTIVENESS, INFRINGEMENT, OR OTHER MATTER, OF ANY GOODS WHICH MYTEE SHALL SUPPLY. THERE ARE NO WARRANTIES WHICH EXTEND BEYOND THE DESCRIPTION ON THE FACE HEREOF. MYTEE SHALL IN NO WAY BE RESPONSIBLE FOR THE PROPER USE AND APPLICATION OF THE GOODS. MYTEE NEITHER ASSUMES NOR AUTHORIZES ANY OTHER PERSON TO ASSUME FOR MYTEE ANY OTHER LIABILITY IN CONNECTION WITH THE SALE OF MYTEE'S GOODS. THIS LIMITED WARRANTY POLICY MAY BE CHANGED OR WITHDRAWN BY MYTEE AT ANY TIME WITHOUT NOTICE.

WEAR PARTS 90-DAY LIMITED WARRANTY: Mytee will replace all wear parts for 90 days from the date of original purchase. "Wear parts" are items which wear out as a result of usage or the passage of time and are consumed despite attempts to maintain them, such as gaskets, wheels, brass, cords, wires, electrical terminals, hoses, switches, thermostats, plastisol parts, filters, bearings, brushes, solenoids, o-rings, bulbs, heating elements, castors, or other parts deemed wear items in Mytee's sole discretion. This warranty covers the cost of replacement only and does not cover shipping or labor costs.

PUMP, VACUUM MOTOR AND HEATER 2-YEAR LIMITED WARRANTY: Mytee warrants that pumps, vacuum and floor machine motors, and heaters will be free from manufacturing defects, defects in workmanship, and defects in material for two (2) years from the date of original purchase. This warranty does not apply and is void if the pump, vacuum motor, or heater has worn brush motors, water damage, chemical build-up, chemical damage, or evidence of abuse, neglect or tampering. This warranty covers the cost of replacement or repair only and does not cover shipping or labor costs.

HOUSING LIFETIME LIMITED WARRANTY: Mytee warrants that rotationally molded housing and tanks will be free from manufacturing defects, defects in workmanship, and defects in material for the life of the part. Replacement cost does not include the cost of shipping or labor.

LIMITATION OF DAMAGES: THE REMEDY OF REPLACEMENT OR REPAIR OF ANY DEFECTIVE GOODS SHALL BE THE EXCLUSIVE REMEDY UNDER ANY WARRANTY MADE BY MYTEE, WHETHER EXPRESS OR IMPLIED. IN NO EVENT SHALL MYTEE BE LIABLE FOR ANY INCIDENTAL OR CONSEQUENTIAL DAMAGES, PROPERTY DAMAGES, OR PERSONAL INJURIES.

All limited warranties are void for, and Mytee does not warrant in any way, any product that evidences misapplication, improper installation, abuse, lack of maintenance, negligence in use or care, abnormal use, alteration of design, use of incompatible or corrosive chemicals, use in a rental service, and/or servicing, installation of parts, or repairs by anyone other than Mytee or a Mytee authorized distributor or service center. Mytee may make changes in products it manufactures and markets at any time; these changes are made without obligation to change, retrofit, or upgrade any product previously sold or manufactured.

Mytee has no obligation to honor the limited warranties set forth herein unless the original purchaser, promptly upon discovering the warranty claim and prior to continuing to use the product, contacts Mytee or a Mytee authorized distributor or service center to describe the claim and to receive and follow instructions for documenting and resolving the claim. In addition, the purchaser must provide the product to which the claim applies to Mytee or a Mytee authorized distributor or service center for a thorough inspection.

If any provision or portion of this limited warranty policy is found to be unenforceable, then the remaining provisions and portions shall remain valid and enforceable. If any provision or portion of this limited warranty policy is found to be limited by law, then that provision or portion shall be construed to make it effective within the bounds of law. For example, if there are legal limitations on the duration of warranties, the warranties made herein shall be construed to have the minimum duration required by law, or, if there are legal limitations of exclusion of remedies, the exclusions made herein shall be construed to apply to the fullest extent possible without violating the law.

The validity, construction and performance of this warranty policy shall be governed by the laws of the State of California, without respect to conflicts of laws principles. The exclusive jurisdiction of any legal action arising from or related to this warranty policy shall be in the State of California and no legal action shall be commenced elsewhere.

Return Material Authorization Procedure

It is the responsibility of any Authorized Service Center (ASC) or Distributor with written authorization to ensure the Customers equipment is repaired as soon as possible. Only Mytee Products Inc. or it's authorized dealers with written authorization, service centers, and agents may make warranty repairs on these products. All others do so at their own risk and expense.

The Distributor must follow Mytee Products, Inc. standard RMA procedure:

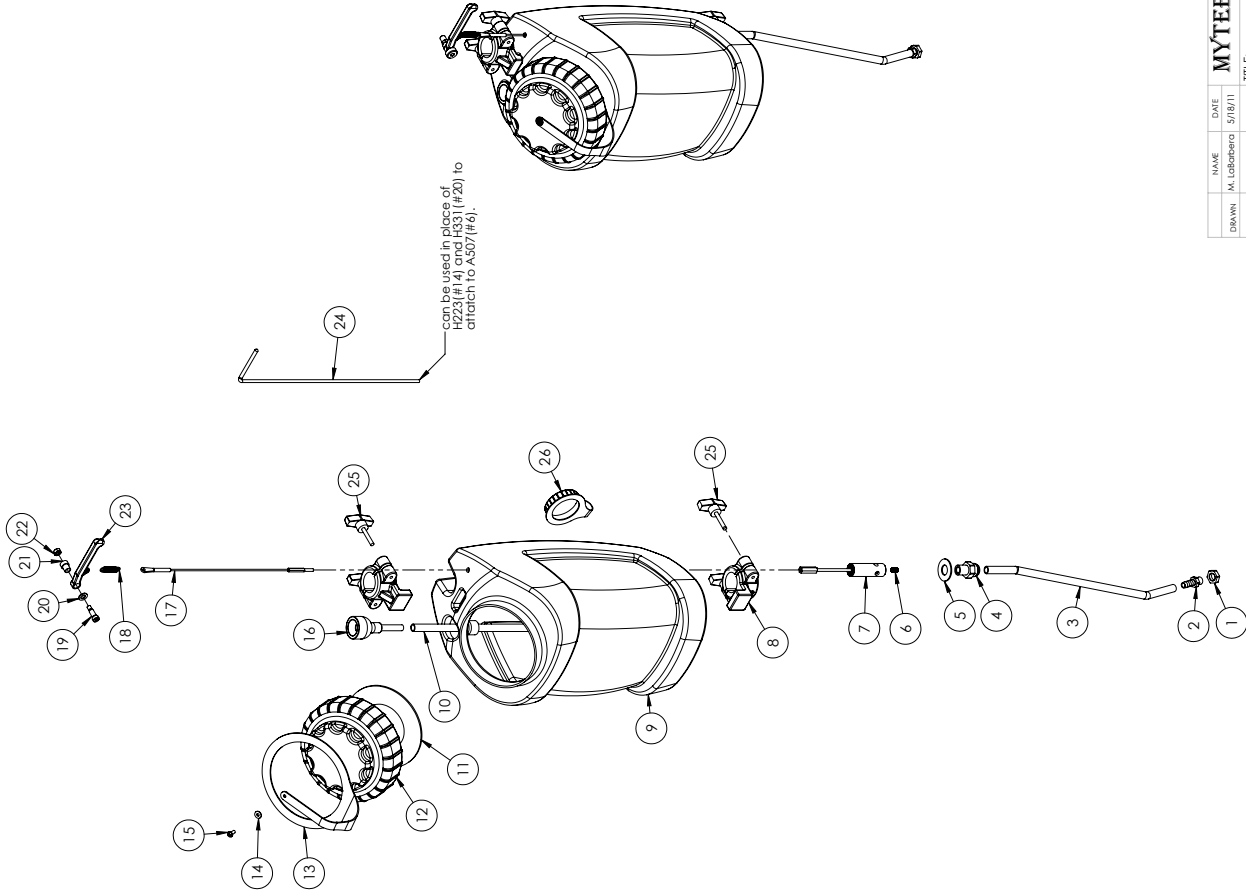
1. When a repair falls within the Warranty time period for a piece of equipment, the Distributor will fill out a RMA/Warranty claim form. This form will act as a repair order to replace any defective parts.
2. All defective parts must be returned to Mytee Products, Inc. with the RMA/claim form for evaluation at the customer's expense. This shipping is non-refundable. All warranty claims are subject to an evaluation by Mytee Products, Inc. to determine if warranty will be approved. Any credit for repair and/or parts will only be issued upon evaluation and approval from Mytee Products, Inc.
3. When Warranty is approved, the Distributor's account will be credited for the replacement part(s). Mytee Products, Inc. will ship the warranted replacement part(s) to the Distributor prepaid. If Warranty is denied the Distributor's account will not be credited for any parts sent for this claim.

ST-4 WAVE™ PARTS & PRICING

ITEM NO.	PART NO.	DESCRIPTION	QTY.	MSRP
1	B156	nut, 1/4" npt	1	\$1.99 ea
2	B241	adapter, brass, 3/8" barb x 1/4" mpt	1	\$1.99 ea
3	PH1612-24	tubing, PVC, 1/2" OD x 3/8" ID	1	\$1.99/ft
4	B134	fitting, 3/8 mpt x 1/2" push-in	1	\$18.99 ea
5	H299	washer, 11/16" id x 1-1/2" od x .075, s/s	1	\$0.99 ea
6	B663A	insert, knurled, 10/32 short	1	\$1.99 ea
7	A507	valve, shampoo tank & handle rod	1	\$24.99 ea
8	H915	clamp, 1.375 ID, shampoo tank	2	\$4.99 ea
9	P559	tank, shampoo, floor machine	1	\$39.99 ea
10	PH1612-36	tubing, PVC, 1/2" OD x 3/8" ID	1	\$1.99/ft
11	G031	gasket, 3.25" i.d. x 5.88" o.d.	1	\$6.99 ea
12	P560	cap, .6" threaded	1	\$23.99 ea
13	G055	leather, cap, 6 1/2"	1	\$12.99 ea
14	H612	washer, #8 flat, s/s	1	\$0.99 ea
15	H230	screw, 10-32 x 1/2 phill pan	1	\$0.99 ea
16	H178	faucet fill	1	\$10.99 ea
17	H223	cable, 15.5" long, 10-32 thrd x swivel ring	1	\$9.49 ea
18	H002	spring, shampoo tank cable	1	\$5.99 ea
19	H149	bolt, 5/16 shldr x 5/8" w/ 1/4-20 thrd	1	\$1.99 ea
20	H148	washer, 5/16", narrow	1	\$0.99 ea
21	P529	spacer, lever, handle adj.	1	\$1.99 ea
22	H215	nut, hex, 1/4-20 s/s	1	\$0.99 ea
23	H331	lever, shampoo tank	1	\$7.99 ea
24	H245	rod, universal, shampoo tank	1	\$12.99 ea
25	H357	thumb screw, 1/4" - 20, shampoo tank	4	\$1.99 ea
26	G036	cap, 2.5" threaded, leathered	1	\$3.49 ea

ITEMS NOT SHOWN

PART NO.	DESCRIPTION	QTY.	MSRP
ADM-314	manual, shampoo tank	1	
AD127	stop sign, register your product	1	
H316	bolt, 1/4-20 x 1-1/2" hex head, s/s	2	\$0.99 ea
H210	washer, 1/4" flat, s/s	2	\$0.99 ea



NAME	DATE	MYTEE PRODUCTS, INC. <small>888921191</small>	shampoo tank
DRAWN	M. Labadie		
CHECKED		<small>PROPRIETARY AND CONFIDENTIAL. THE INFORMATION CONTAINED IN THIS DRAWING IS THE SOLE PROPERTY OF MYTEE PRODUCTS, INC. AS A WHOLE OR PART THEREOF. REPRODUCTION OR TRANSMISSION OF THIS DRAWING WITHOUT THE WRITTEN PERMISSION OF MYTEE PRODUCTS, INC. IS PROHIBITED.</small>	SIZE DWG. NO. C ST-4 REV OD
		SCALE: 1:6	SHEET 1 OF 1

NOTES



Mytee Products Inc.
13655 Stowe Dr.
Poway, CA 92064
www.mytee.com
PH 858.679.1191
FX 858.679.7814

© 2012 Mytee Products Inc.
Printed in the U.S.A.