

---

# NSWMS Print Driver Installation Troubleshooting Guide

# Table of Contents

---

<b>Table of Contents</b> .....	<b>2</b>
<b>1. Prerequisites</b> .....	<b>3</b>
1.1. System Configuration .....	3
<b>2. Installation</b> .....	<b>4</b>
2.1. Installation .....	4
<b>3. Configuration</b> .....	<b>6</b>
3.1. Login .....	6
3.2. Configuration .....	6
3.3. View logs .....	11
3.4. Webservice Settings .....	116

# 1. Prerequisites

## 1.1. System Configuration

---

### **HARD WARE REQUIREMENT:**

- Windows XP or Higher
- 80 GB space, 4 MB RAM
- Laser printer(s) configured as network printer
- Label printer(s) configured as network printer

### **SOFTWARE REQUIREMENT:**

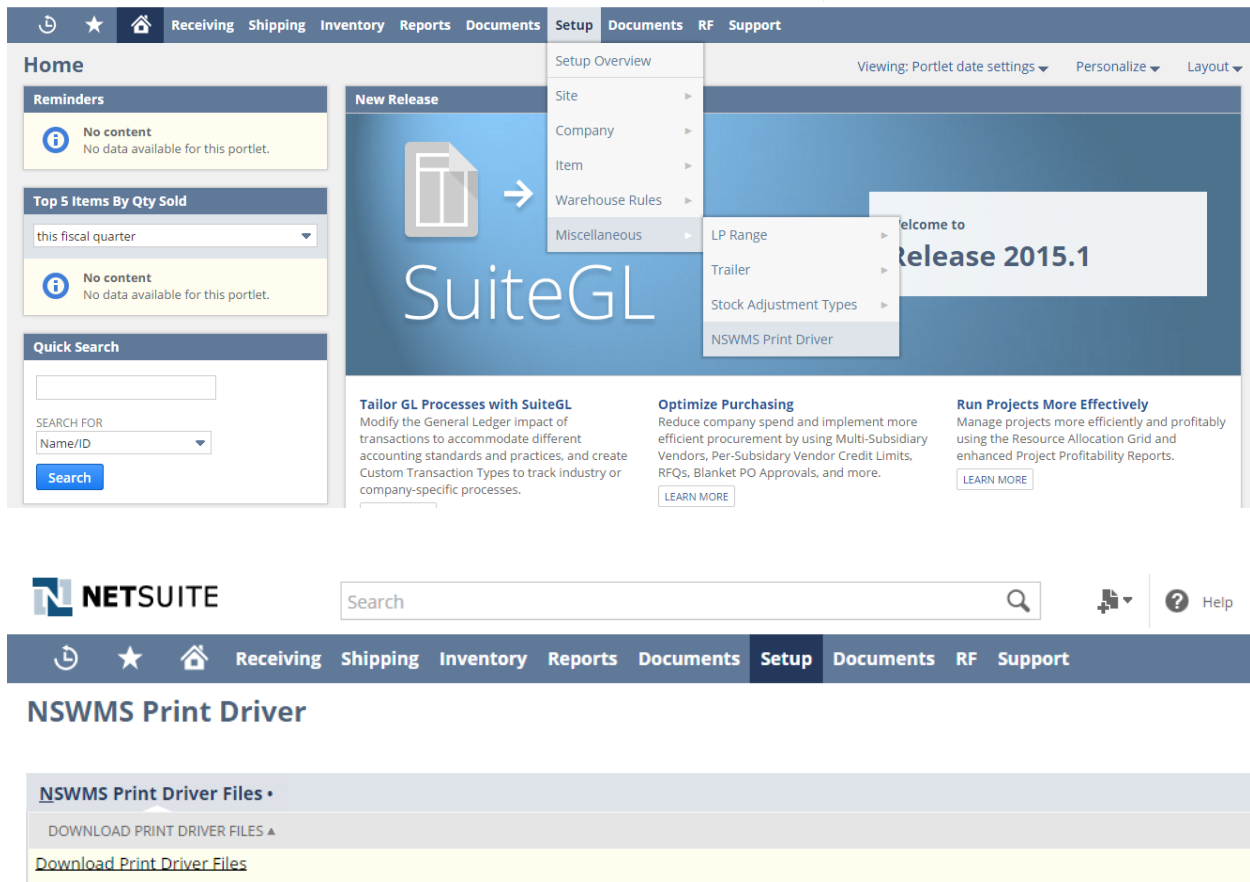
- Shipping Software should be installed (FedEx Ship Manager, UPS World Ship , Endicia Professional)
- Must have administrative rights to install software on PC/print server
- **Must have administrative rights to Configure(System DSN) Shipping Manager**

## 2. Installation

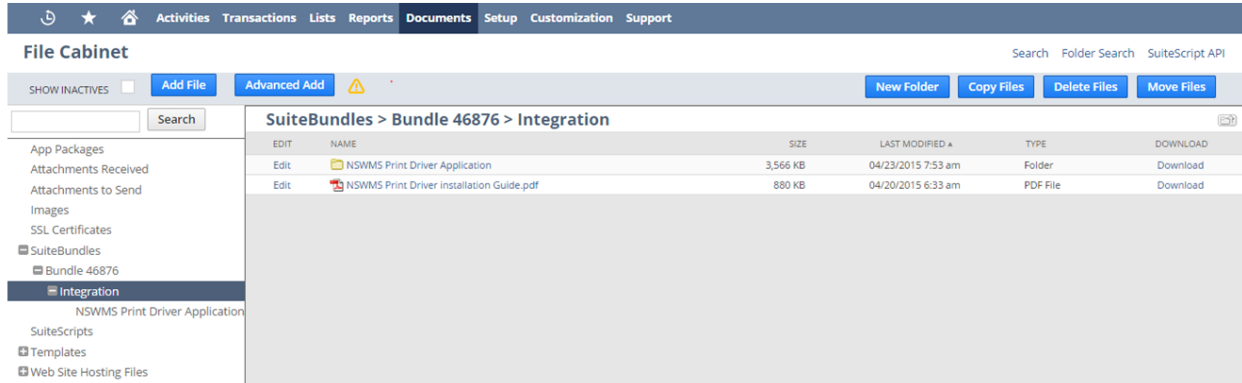
### 2.1. Installation

Before the NetSuite carrier integration installation we need the administrative rights.

Need to download the exe files from Netsuite menu as shown below and create the desktop Short cut for NetsuiteCarrierIntegration.exe file



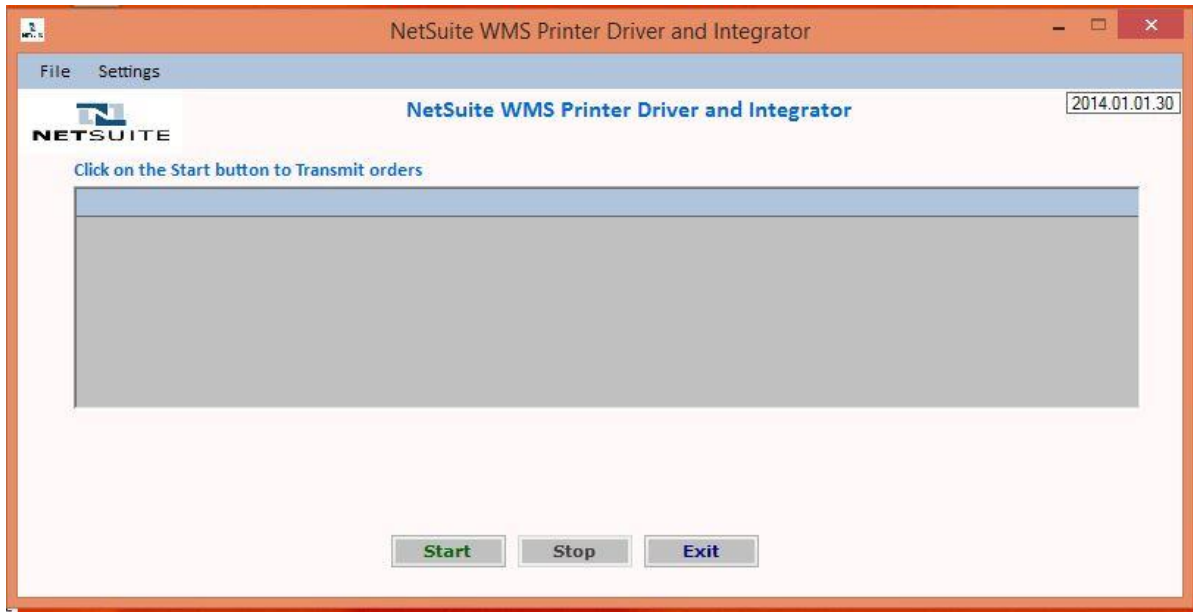
Here download the NSWMS Print Driver application.Zip folder and place this folder in locally and Unzip the folder and create desktop shortcut for NetsuiteCarrierInegrator.exe file.



Desktop short cut will be created after unzip the folder.



➤ Double click on shortcut to launch NetSuite carrier integration.



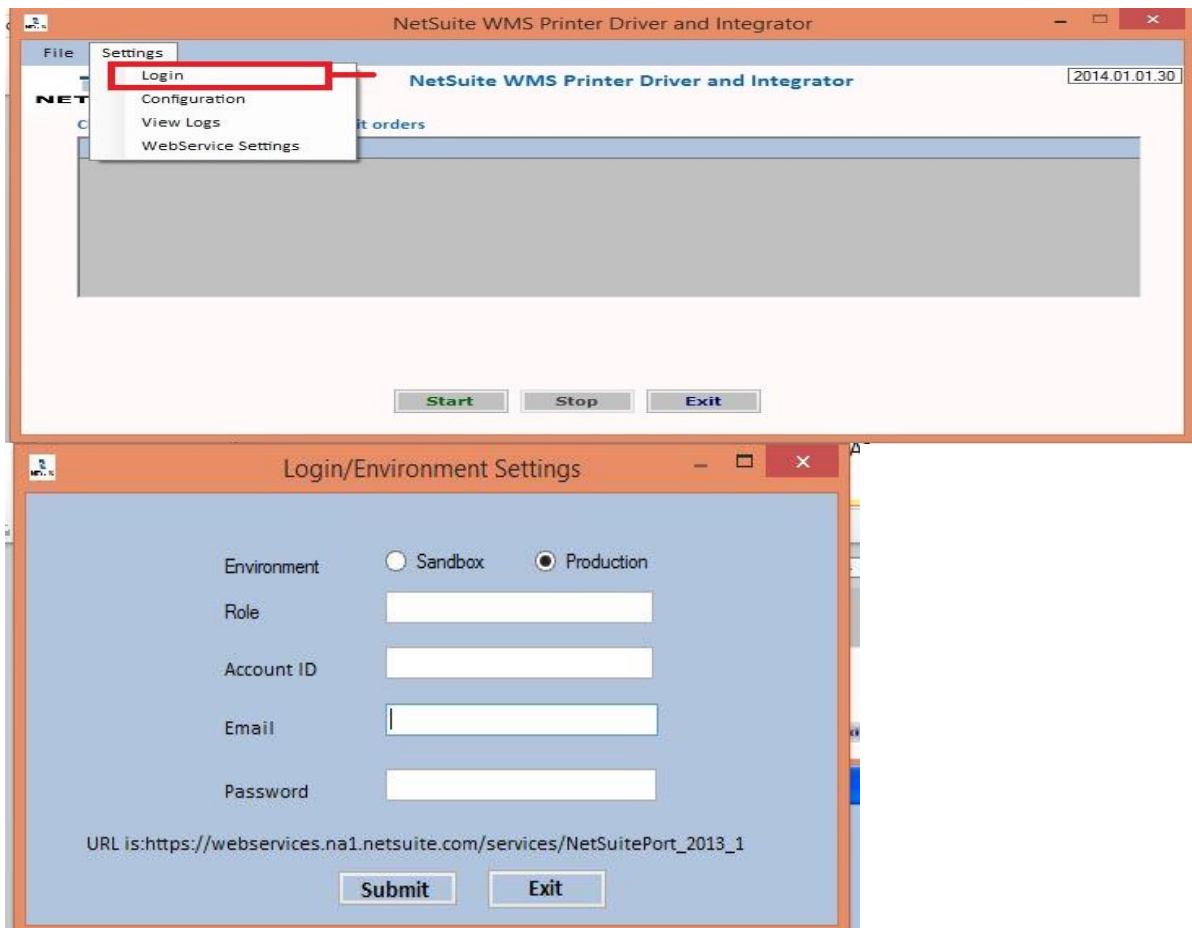
### 3. Configuration :

## 3.1. Login

---

**Login Settings:** Here you can configure login credentials to allow integration login to NetSuite.

**Menu -> Settings->Login**



**Environment:** Need to select correct environment Sandbox/Production.

**Role :** Need to provide any role with NetSuite WMS and Web Services access

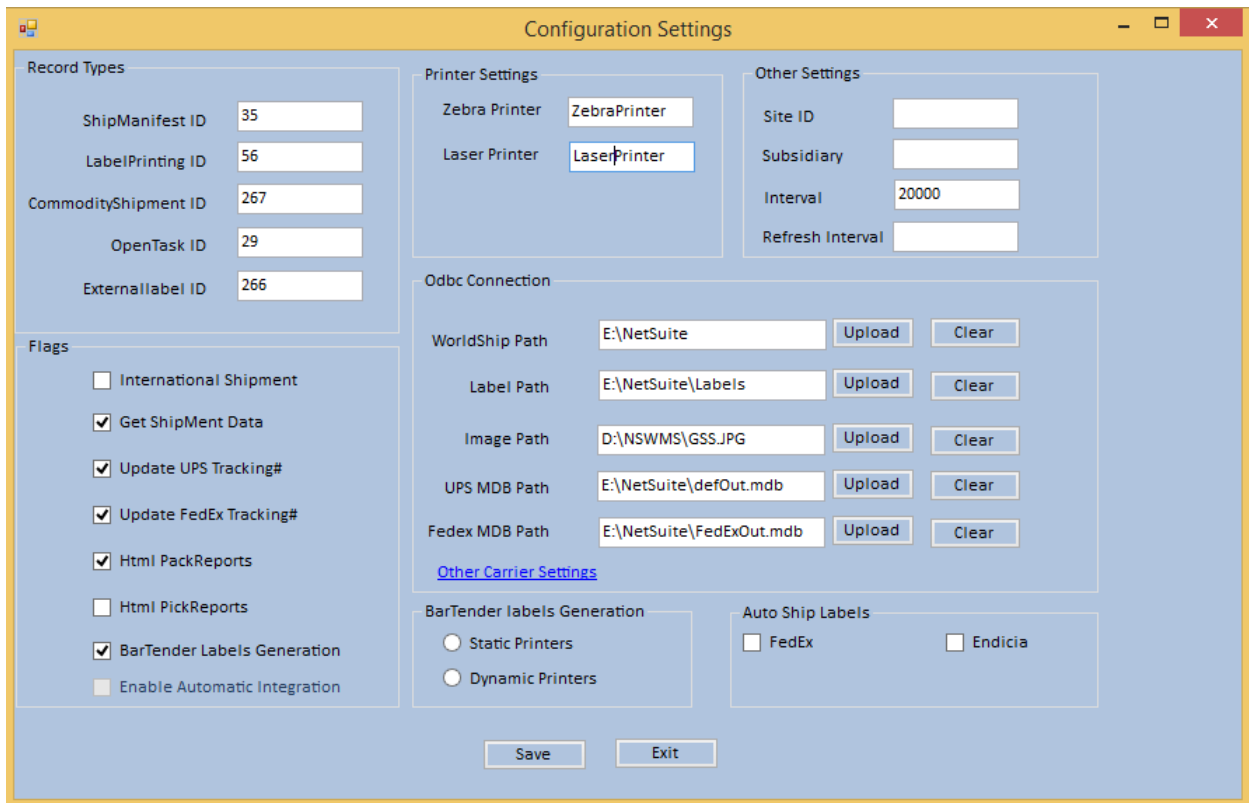
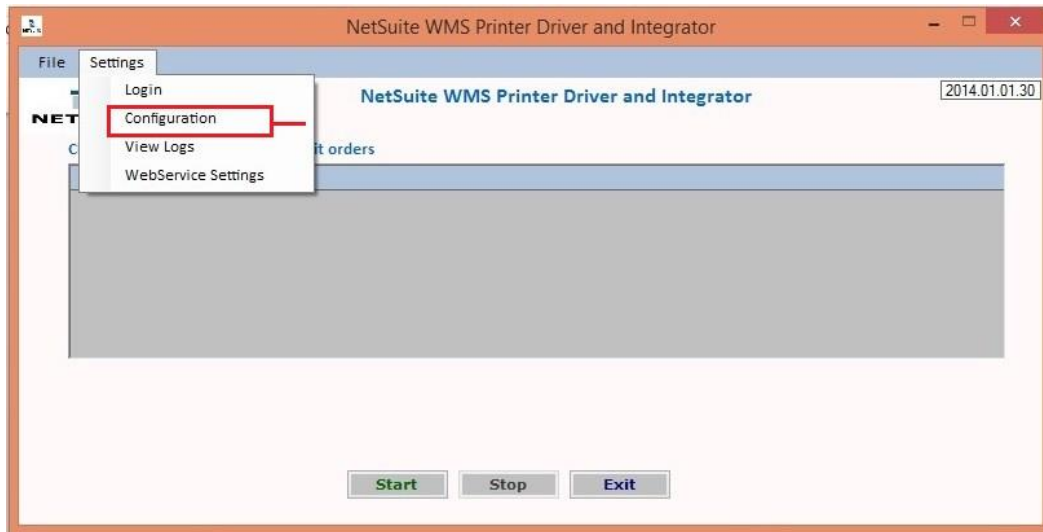
**Account Id:** Need to provide customer Account#. You can obtain Account# in setup-> Integration-> Web Service Preferences, under Administrator role. Then login with your user id and password.

## 3.2. Configuration

---

**Configuration Settings:** Here you can modify all configuration settings.

**Menu->Settings→Configuration**



**Record Types:** Need to provide all custom record internal IDs in Record Type panel.

You can obtain internal ID of the custom records from Setup->Customization -> Record Types

Record Types

ShipManifest ID	152
LablePrinting ID	111
CommodityShipment ID	522
OpenTask ID	218
Externallabel ID	266

**Flags:**

Flags

- International Shipment
- Get ShipMent Data
- Update UPS Tracking#
- Update FedEx Tracking#
- HTML PackReports
- HTML PickReports
- BarTender Labels Generation

BarTender Labels Generation

- Static Printers
- Dynamic Printers

Here we enable /disable certain features of integration. Commonly required flags are

**GetShipMent Data** - Required to generate worldship.csv file

**Update UPS TrackingNo** - To write back tracking information to NetSuite by reading data from UPS Access database.

**Update FedEx TrackingNo** - To writeback tracking information to NetSuite by reading data from FedEx Access database.

**HTML Pick Reports** - To enable pick report printing

**HTML Pack Reports** - To enable packing list printing

**International Shipment:** To enable commodity information in the CSV file

**BarTender Label Generation:** To generate text file from external labels custom record. This file can be mapped to labels designed using bar tender.



**Static Printers** - This is default option where printer is specified in Bar Tender commander.

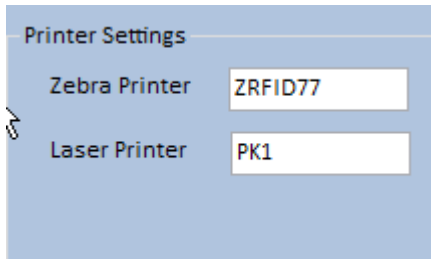
**Dynamic Printers** - This will generate commander script incase printer is passed dynamically from UI/RF

**Printer Settings:**

**Zebra Printer** : Specify label printer here.

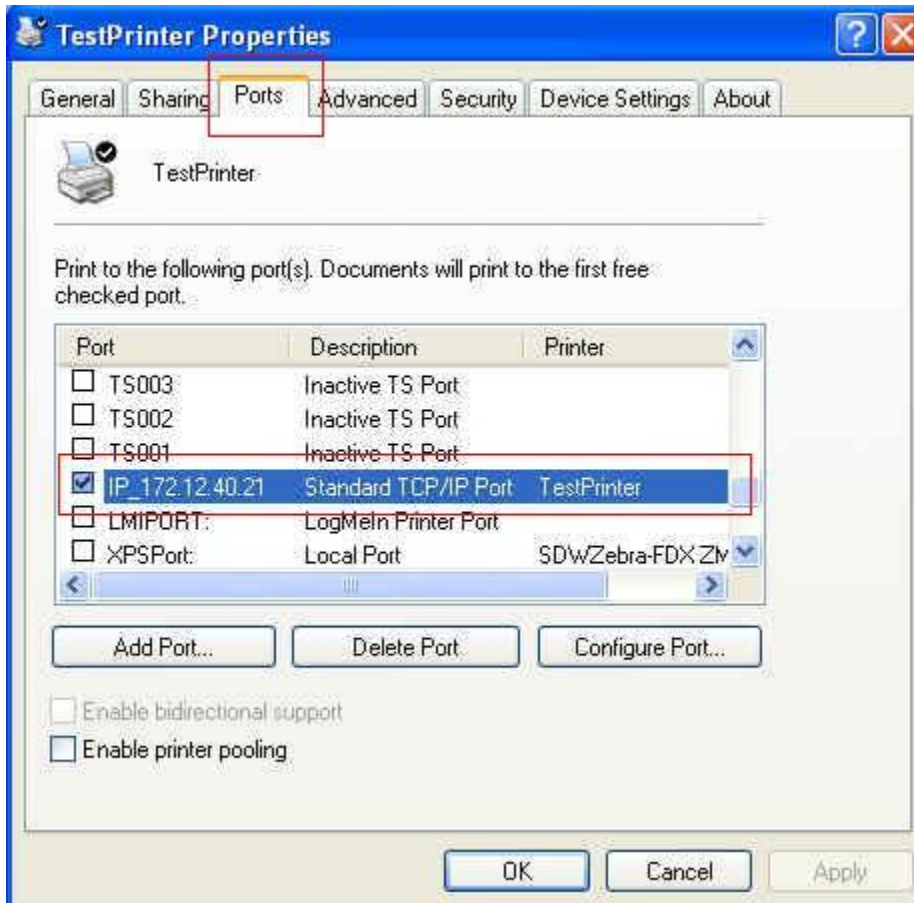
**Laser Printer** : Specify laser printer here to print

**Note:** Printer name should match with print queue name in control panel-> Printers.. Also printer should be configured as Network printer.



How to identify if printer is Network printer?

If you check printer properties, ports should be enabled and printer should be identified by specific IP address.



**ODBC Connection :**

**Worldship Path:** worldship.csv file will be created in this folder.

**External Label Path:** Label data and packlist and pickreport files will be created in this folder.

**Image Path :** Image file patch for packing list Logos.

**UPS MDB Path :** File name of the UPS database where tracking information will be stored.

**FedEx MDB Path :** File name of the FedEx database where tracking information will be stored.

Odbc Connection		
WorldShip Path	<input type="text" value="C:\UPS\WSTD\ImpExp\AcctPkg"/>	<input type="button" value="Upload"/> <input type="button" value="Clear"/>
Label Path	<input type="text" value="C:\EbizNet\Labels"/>	<input type="button" value="Upload"/> <input type="button" value="Clear"/>
Image Path	<input type="text" value="D:\NSWMS\GSS.JPG"/>	<input type="button" value="Upload"/> <input type="button" value="Clear"/>
UPS MDB Path	<input type="text" value="C:\UPS\WSTD\ImpExp"/>	<input type="button" value="Upload"/> <input type="button" value="Clear"/>
Fedex MDB Path	<input type="text"/>	<input type="button" value="Upload"/> <input type="button" value="Clear"/>

**Other Settings:**

**Site ID :** Need to enter the location internal ID. Leave this blank if there is only one site or you do not want to filter data by location.

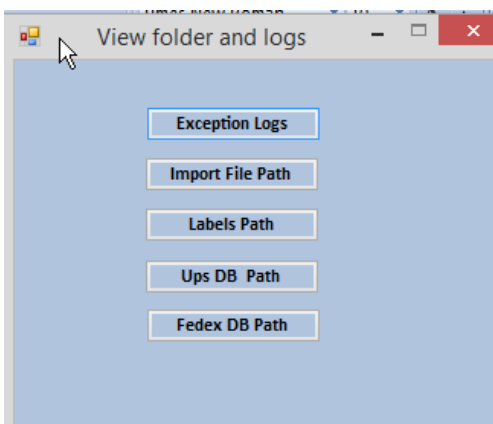
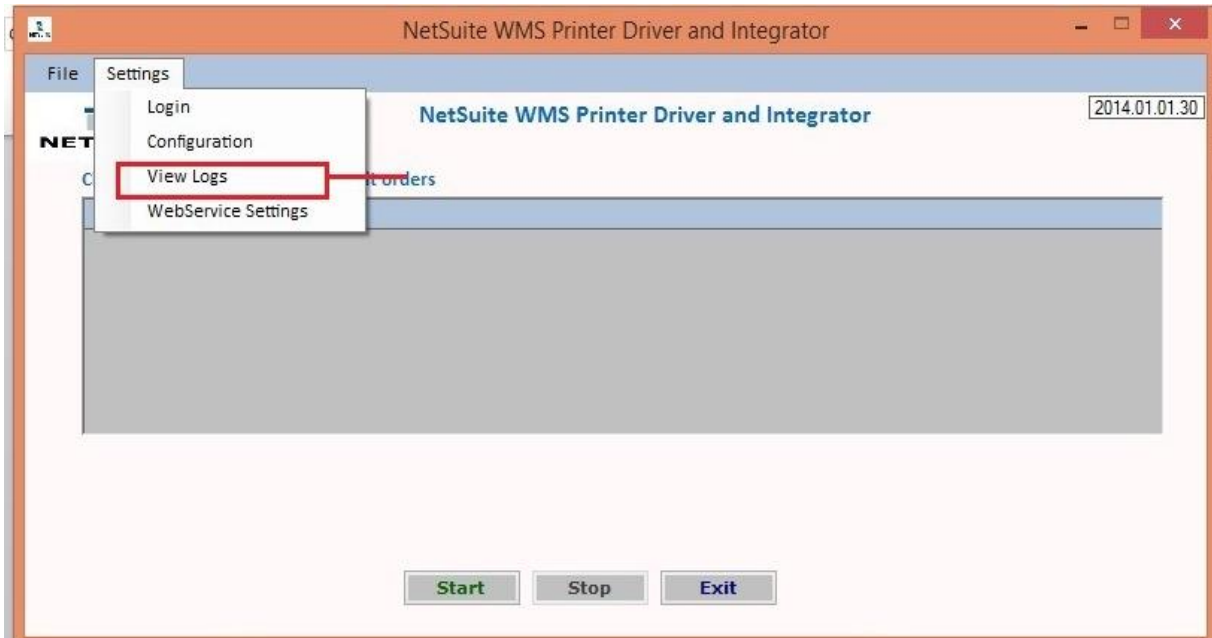
**Interval :** Time interval for integration in milliseconds. 1000 MS = 1 second.

Other Settings	
Site ID	<input type="text"/>
Interval	<input type="text" value="20000"/>

## 3.3. View logs

---

### Settings → View Logs



**Exception logs Button:** Exception Log button shows exception logs path

**Worldship Path:** Worldship path shows the ship manifest creation CSV file information

**Labels Path:** External label data , Packlists, Pickreport path information in labels path

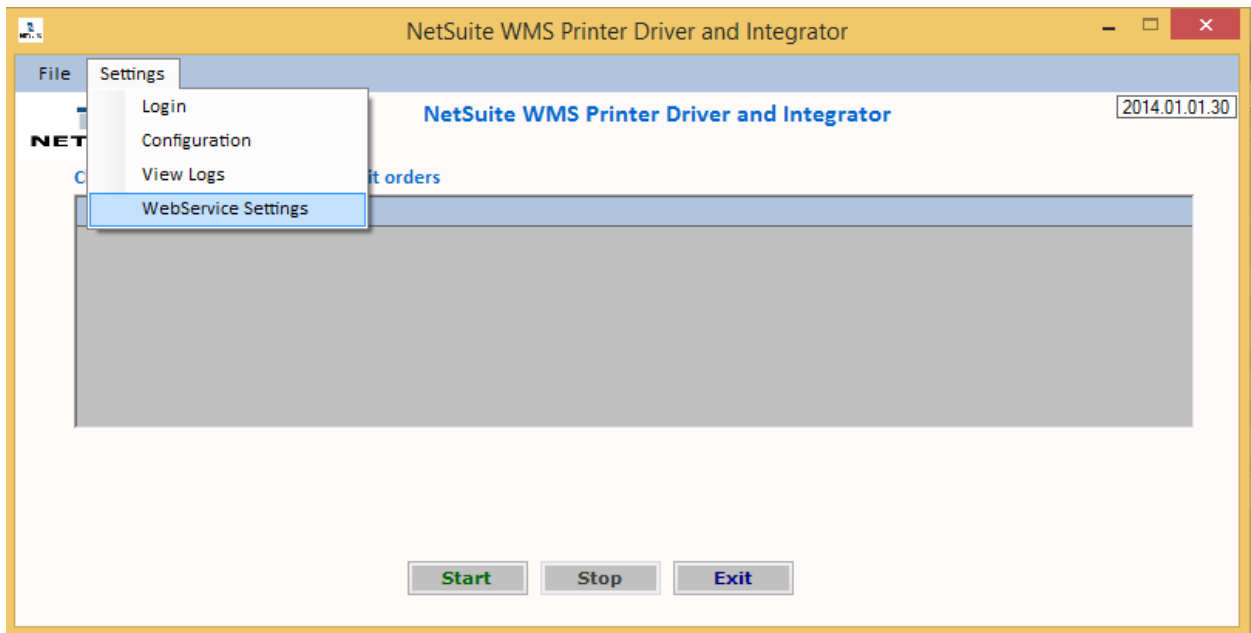
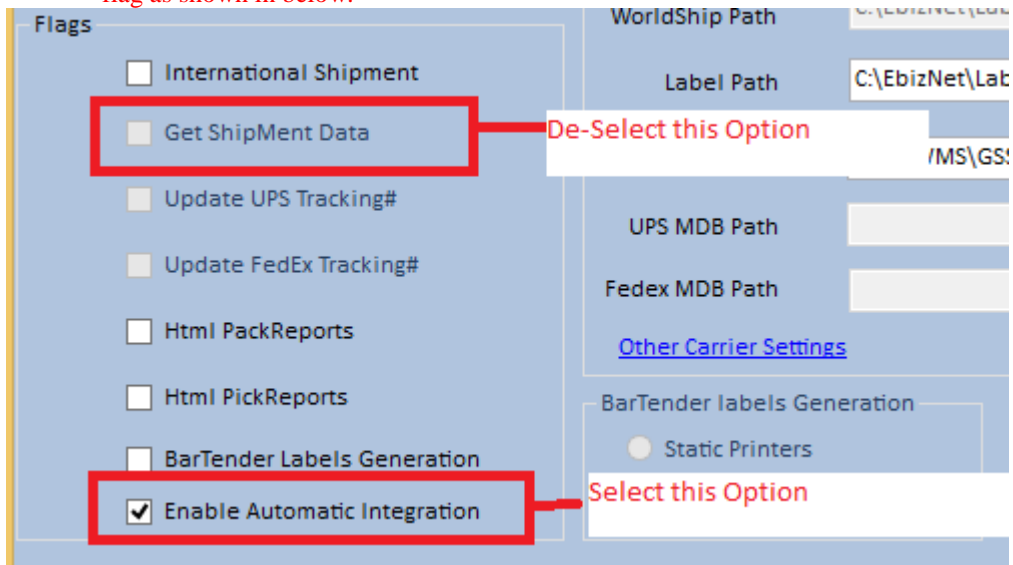
**Ups Database Path:** To open the UPS export Mdb file path.

**FedEx Database Path:** To open the Fedex export Mdb file path.

### 3.4. Webservice Settings

#### How to Enable AutoShipping

- For Auto shipping need to Un-check the Get Shipment Data flag and Select the Enable Automatic Shipping flag as shown in below.



Whenever the Webservice Settings screen opened need to configure the related settings.

**For FedEx Autoshipping follow the steps:**

1. Need to Select the FedEx ShipManager Checkbox
2. Enter the FedEx Account
3. Enter Key
4. Enter Meeter
5. Enter FedEx Password
6. Enter FedEx URL  
For Testing---- (<https://wsbeta.fedex.com:443/web-services/ship>)  
For Live orders---- (<https://ws.fedex.com:443/web-services/ship>)

7. If the Ship labels required in Pdf then need to select the PDF check box if required to print through Zebra printer select the ZPL checkbox
8. Multiple Shipments checkbox represent if we have multiple shipments we need to check this checkbox otherwise not required.
9. If we require the Reprint of ship labels then need to select the Reprint Ship label checkbox.

**For UPS Autoshipping follow the steps:**

1. Need to Select the UPS ShipManager Checkbox
2. Enter the UPS Account
3. Enter Meter
4. Enter UPS Login
5. Enter UPS Password
6. Enter USPS URL (<https://wwwcie.ups.com/webservices/Ship>)
7. If we require the Reprint of ship labels then need to select the Reprint Ship label checkbox.

**For USPS Autoshipping follow the steps:**

1. Need to Select the USPS ShipManager Checkbox
2. Enter USPS Login
3. Enter USPS Password
4. Enter the USPS Account
5. Enter USPS Partner ID
6. Enter USPS URL (<https://www.envmgr.com/LabelService/EwsLabelService.aspx>)

The screenshot shows a 'Webservice Settings' window with three main configuration sections: FedEx, UPS, and USPS. Each section has a checked checkbox at the top and a corresponding configuration box below. The FedEx section includes fields for Account, Key, Meter, Password, URL, and HubId, along with radio buttons for PDF and ZPL label output formats and checkboxes for Multiple Shipments and RePrint ShipLabels. The UPS section includes fields for Account, Meter, Login, Password, and URL, and a checkbox for RePrint ShipLabels. The USPS section includes fields for Login, Password, Account, Partner ID, and URL. At the bottom of the window are 'Save' and 'Ext' buttons.

Service	Field	Value
FedEx ShipManager	FedEx Account	510087445
	Key	i7ziQrDF12fXVMJ
	Meter	118630613
	FedEx Password	MrUTUzzk63dWPI5SupryNc83P
	FedEx URL	https://wsbeta.fedex.com:443/wel
	HubId	5531
	Label Output Format	ZPL
UPS ShipManager	UPS Account	059WY6
	Meter	BCB99B5A9FE5AB9A
	UPS Login	sravandokka
	UPS Password	ABCDef#123
	UPS URL	https://wwwcie.ups.com/wel
USPS ShipManager	USPS Login	600986
	USPS Password	caminosantafe1
	USPS Account	600986
	USPS Partner ID	12345ABCD
	USPS URL	https://www.envmgr.com/La