



BARCLAY BUTERA

NEWPORT



LEXINGTON
HOME BRANDS





BARCLAY BUTERA

NEWPORT

I DREW INSPIRATION FOR THE NEWPORT COLLECTION FROM THE RELAXED YET SOPHISTICATED LIFESTYLE OF THE COAST.

Traditional design elements suggest an air of familiarity, while the look is fresh and fashionable. I love balancing a bold statement with interiors that are inviting, understatedly elegant and remarkably comfortable.

To me, that defines new traditional style.

Newport offers two stylish finishes in lighter wood tones, accented by three shades of raffia and two painted colorations. Layering texture and color has always been a passion of mine because I love the way it adds energy and dimension to a room. Textiles pull the look together, and Newport features soft linens and cottons in my signature blue and white, celadon and ivory, and soft shades of taupe and gray. For me, a coastal lifestyle is the ultimate expression of relaxation and casual elegance.

~ BARCLAY BUTERA

BEDROOM



“WHAT BETTER PLACE THAN THE BEDROOM
TO EXPRESS A TRUE SENSE OF HOME.
UNRIVALED OPPORTUNITIES TO REPRESENT THE
TRUE ESSENCE OF PERSONALITY AND STYLE.”





920-174C Shorecliff Canopy Bed, King
83W x 88.5L x 90H in.

920-624 Collins Bachelor's Chest
38W x 20D x 32H in.



Blending style and function, the Ruby bed bench is an indispensable addition at the foot of any bed. The authenticity of hammered iron, finished in a textured aged bronze patina, offers a foundation upon which to add other layers of color and texture to the room. On the opposite page, the 38-inch Collins bachelor's chest features a striking geometric pattern on the doors, behind which are two adjustable shelves and grommets for wire management. This silhouette is available in the Sandstone, Sailcloth, Marine or Seaglass finishes for a custom look.

above:
920-537 Ruby Bed Bench
58W x 19D x 19H in.

right:
920-624 Collins Bachelor's Chest
38W x 20D x 32H in.



“WHETHER A PERSON LIVES
IN A COASTAL BEACH TOWN
OR THE CITY, THERE
WILL ALWAYS BE
SOMETHING DISTINCTLY
DIFFERENT ABOUT THEM
THAT WILL SET THEM APART –
MAKING THEM
ONE-OF-A-KIND.”

The Shorecliff canopy bed, shown here in the Sailcloth finish, offers a dramatic interpretation of new traditional style. The headboard fabric, in a natural raffia coloration, is framed with aged bronze nailhead trim, creating an ideal backdrop for showcasing layers of pattern and color on the bedding ensemble. This bed can be converted to a low-post configuration, using decorative post caps in aged bronze that are included with the piece.

921-174C Shorecliff Canopy Bed, King
83W x 88.5L x 90H in.

920-205 La Costa Rectangular Raffia Mirror
52W x 2D x 32H in.

921-624 Collins Bachelor's Chest
38W x 20D x 32H in.







921-624 Collins Bachelor's Chest
38W x 20D x 32H in.

right:
920-974 Balboa Island Raffia Hall Chest
41W x 17D x 36H in.

The Balboa Island raffia hall chest is one of Barclay's favorites designs, capable of making a great visual statement in any room. Shown here as a nightstand in the natural finish, the silhouette has three full-extension self-closing drawers and comes with an ultra-clear lay-on glass top to protect the surface in areas of heavy use. The chest is available in the natural raffia color, Marine blue or Seaglass green.



“TRADITIONAL DESIGN HAS A COMFORTABLE FAMILIARITY ABOUT IT, WHICH MAKES CLASSIC STYLING AN IDEAL LAUNCHING PAD FOR CREATING INSPIRED INTERIORS.”





Creating a sanctuary space often means the artful blending of shapes and silhouettes. In this setting the Crystal Cove upholstered bed is flanked by a Cliff nightstand on left and the 36-inch Corona del Mar center table on the right. While using a center table in the bedroom might not be intuitive, note how the overhang of the top accommodates the Mackenzie chair on casters beside it, creating its own intimate and functional space.

920-621
Cliff Nightstand
33.75W x 20D x 30H in.

920-134C
Crystal Cove
Upholstered Panel Bed, King
80.25W x 87L x 64H in.

5454-45 Colby Ottoman
21.5W x 21.5D x 19.5H in.

920-924C
Corona Del Mar Center Table
36 diameter x 29H in.

5385-13
Mackenzie Dining Arm Chair
25W x 30D x 41H in.

920-233
Garnet Breakfront Dresser
68W x 21D x 36H in.



For smaller bedrooms, one always needs an appropriately scaled night table. The Clay design, at 20-inches wide, offers the function of a full-extension self-closing drawer along with the style of tapered legs connected by a cross stretcher. The silhouette is offered in the Sandstone or Sailcloth finishes. On the opposite page, the 34-inch Cliff nightstand offers a larger option, also available in both finishes.

above:
920-622 Clay Night Table
20W x 18D x 29H in.

right:
920-621 Cliff Nightstand
33.75W x 20D x 30H in.



“I FIND THAT AN UNDERSTATED DESIGN AESTHETIC, WITH A SIMPLIFIED AND SOOTHING COLOR PALETTE GOES A LONG WAY TOWARDS CREATING A SENSE OF SERENITY AND SOLACE IN THE MOST PRIVATE SPACES OF A HOME.”





Few things are more effective in adding energy to a room than the introduction of color and texture. Here, the Balboa raffia chest serves both purposes, resplendent in the Seaglass coloration. Pairing this palette with custom upholstery on the headboard and footboard of the Crystal Cove bed pulls the look together. This bed design also comes in twin size as shown on the following spread.



above and previous page:

923-974 Balboa Island Raffia Hall Chest
41W x 17D x 36H in.

921-134UHB Crystal Cove Custom Upholstered Panel Headboard, King
79.75W x 3.5D x 64H in.

921-134UFB Crystal Cove Custom Upholstered Footboard, King
80.25W x 3D x 27.5H in.

920-537-01 Ruby Bed Bench
58W x 19D x 19H in.

right:
921-621 Cliff Nightstand
33.75W x 20D x 30H in.



A light-colored wooden nightstand with three drawers. The top drawer has two small round knobs, while the two drawers below have larger ring pulls. The nightstand is positioned next to a bed.

A vibrant blue ceramic lamp with a natural wood lampshade. The lamp has a gold-colored base and a matching gold-colored top. It is positioned on the nightstand.

A small, square, woven basket with a metal clasp. It is positioned on the nightstand next to the lamp.

Two blue glass bottles, one taller and one shorter, positioned on the nightstand next to the lamp.

A light-colored seashell positioned on the nightstand next to the bottles.

A bed with a patterned duvet and white pillows. The bed is positioned next to the nightstand. The headboard and footboard of the bed are visible, featuring a green fabric panel.

A light-colored, textured rug covering the floor in the foreground.

“THE ONE CONSTANT IN DESIGN IS THAT WE ALL WANT TO FEEL A CONNECTION WITH OUR SURROUNDINGS AND PIECES THAT INSPIRE US. FOR ME THAT MEANS THE PLACE I CALL HOME IS A DIRECT REFLECTION OF MY PERSONAL STYLE.”



921-131HB Crystal Cove
Upholstered Panel
Headboard, Twin
41.25W x 3.5D x 56.5H in.

922-624 Collins Bachelor's Chest
38W x 20D x 32H in.

5454-45 Colby Ottoman
21.5W x 21.5D x 19.5H in.





above:
922-624 Collins Bachelor's Chest
38W x 20D x 32H in.

right:
921-622 Clay Night Table
20W x 18D x 29H in.





above:

920-307 Goldenrod Chest
44W x 20D x 55.5H in.

5385-13 Mackenzie Dining Arm Chair
25W x 30D x 41H in.

920-924C Corona Del Mar Center Table
36 diameter x 29H in.

right:

5301-11 Redondo Chair
28.5W x 33.5D x 34.5H in.

920-201 La Jolla Woven Round Mirror
42 diameter x 3D in.

920-233 Garnet Breakfront Dresser
68W x 21D x 36H in.







920-134C
Crystal Cove
Upholstered Panel Bed, King
80.25W x 87L x 64H in.

920-940
Yacht Club Martini Table
14 diameter x 22.5H in.

LL5412-23
Hyland Park Leather Settee
59.5W x 34D x 31H in.

920-201
La Jolla Woven
Round Mirror
42 diameter x 3D in.

920-233
Garnet Breakfront Dresser
68W x 21D x 36H in.

5301-11
Redondo Chair
28.5W x 33.5D x 34.5H in.

An elegant alternative to the addition of a bench at the foot of a bed is the placement of a classic upholstered piece like the Hyland Park leather settee shown here. What a wonderful way to transition into your day! The Garnet breakfront dresser offers generous storage with 12 full-extension self-closing drawers. Paired above is the 42-inch diameter La Jolla woven Abaca mirror, whose dimension and texture add another level of visual interest to the room.

DINING ROOM



“I LOVE THE JUXTAPOSITION OF ELEMENTS...
WHERE SPONTANEITY MEETS RESTRAINT,
BECAUSE IT GIVES RISE TO THE UNEXPECTED,
AND OFTEN THE MOST DEFINING ASPECT
OF A ROOM DESIGN.”





920-877 Oceanfront Rectangular Dining Table
88W x 44D x 30H in.

920-883 Seacliff Upholstered Host Wing Chair
28W x 31D x 48H in.

920-880 Eastbluff Upholstered Side Chair
19.75W x 26.25D x 40H in.

920-852 Bayside Buffet
78W x 20D x 38H in.



“AT THIS STAGE IN MY LIFE, I FIND MYSELF NOW DRAWN TO A MUCH MORE SOOTHING TRANSITIONAL STYLE, ONE THAT FOCUSES ON COMFORT AND PRACTICALITY BUT STILL EMBODIES ELEGANCE AND SOPHISTICATION.”

For those who never seem to have enough storage space, the 78-inch Bayside buffet is a stylish solution. Four full-extension self-closing drawers are felt lined, with one divided for silver. Behind each pair of doors are two large adjustable shelves. This statement piece is available in the Sandstone, Sailcloth, Marine or Seaglass finishes. The Marine blue version is shown on the next spread.



920-877 Oceanfront Rectangular Dining Table
88W x 44D x 30H in.

920-883 Seacliff Upholstered Host Wing Chair
28W x 31D x 48H in.

920-852 Bayside Buffet
78W x 20D x 38H in.

920-880 Eastbluff Upholstered Side Chair
19.75W x 26.25D x 40H in.

“I HAVE DISCOVERED THAT MORE OFTEN THAN NOT,
IT IS ONE GREAT PIECE THAT MAKES THE MOST
INTERESTING AND COMPELLING DESIGN STATEMENT.”



922-852 Bayside Buffet
78W x 20D x 38H in.

The Bayside buffet, available in four distinctive finishes, is shown here in Marine blue. The depth and richness of color on this signature piece anchors the room, while offering the opportunity to correlate complementary patterns and colors on the upholstered host and side chairs around the Oceanfront dining table.



The 60-inch diameter Magnolia dining table, shown here in the round configuration, extends to 80-inches with the leaf inserted, offering comfortable seating for six. The graceful shape of the pedestal features a decorative metal collar in an aged bronze patina.

920-869

Seaside Sideboard
62W x 20D x 34H in.

920-883

Seacliff Upholstered
Host Wing Chair
28W x 31D x 48H in.

920-881

Eastbluff Upholstered
Arm Chair
23W x 26.25D x 40H in.

920-875C

Magnolia Round
Dining Table
60 diameter x 30H in.





When entertaining guests, a serving piece is essential in the dining area. On the opposite page, the 62-inch Seaside sideboard offers a generous serving surface, with ample storage beneath in four full-extension self-closing drawers. The two in the middle are felt lined, with one divided for silver. The outer drawers feature extra depth to accommodate larger pieces.



920-881

Eastbluff Upholstered Arm Chair
23W x 26.25D x 40H in.

920-869

Seaside Sideboard
62W x 20D x 34H in.





above and right:
921-869 Seaside Sideboard
62W x 20D x 34H in.

921-881 Eastbluff Upholstered Arm Chair
23W x 26.25D x 40H in.

921-875C Magnolia Round Dining Table
60 diameter x 30H in.

left:
920-201 La Jolla Woven Round Mirror
42 diameter x 3D in.

921-852 Bayside Buffet
78W x 20D x 38H in.

921-880 Eastbluff Upholstered Side Chair
19.75W x 26.25D x 40H in.

921-877 Oceanfront Rectangular Dining Table
88W x 44D x 30H in.





The 88-inch Oceanfront dining table, shown here without leaves, accommodates six. With two 20-inch leaves, the table comfortably seats up to twelve. The trestle base features decorative metal collars that accent the soft curvature of the legs. The Seacliff host chair, shown here in a transitional geometric pattern, makes a great statement and complements the Seaglass finish on the Bayside buffet.

920-201 La Jolla Woven Round Mirror
42 diameter x 3D in.

923-852 Bayside Buffet
78W x 20D x 38H in.

921-880 Eastbluff Upholstered Side Chair
19.75W x 26.25D x 40H in.

921-877 Oceanfront Rectangular Dining Table
88W x 44D x 30H in.

921-883 Seacliff Upholstered Host Wing Chair
28W x 31D x 48H in.



A large, rectangular wooden pendant light hangs from the ceiling, featuring a series of vertical glass rods at its base.

A round, woven mirror is mounted on the wall, reflecting the room's interior.

A lamp with a white ceramic base and a wooden shade sits on a teal cabinet.

A vase of white hydrangeas sits on the dining table.

A stack of white plates is set on the dining table.

Four wine glasses are arranged on the dining table.

A teal-colored cabinet or island is visible in the background, featuring dark handles.

A large abstract painting with blue and orange tones is displayed on the wall.

Here, the 48-inch diameter Corona del Mar center table makes a chic statement as a dining table. It is available in the Sandstone or Sailcloth finishes, but also as a combination with a Sandstone top and Sailcloth base. Paired with the table is the Mackenzie castered dining chair, which is a part of the Barclay Butera upholstery assortment. The gentle concave back, contemporary English arms and dramatic dressmaker skirt make this piece a show-stopper in virtually any fabric combination.



921-976C Jade Bar/Chest on Stand
42.25W x 19.25D x 78H in.

5385-13 Mackenzie Dining Arm Chair
25W x 30D x 41H in.

920-925C Corona Del Mar Center Table
48 diameter x 29H in.



“I HAVE ALWAYS FOUND INSPIRATION IN THE LIFESTYLE OF COASTAL LIVING BECAUSE OF ITS RELAXED YET SOPHISTICATED AESTHETIC... IT EVOKES A FRESH APPROACH TO CASUAL ELEGANCE.”



920-896 Eastbluff Upholstered Bar Stool
23W x 24.25D x 43H in.

920-895 Eastbluff Upholstered Counter Stool
23W x 24.25D x 37H in.

Available in both counter and bar heights, the Eastbluff design offers the comfort of an upholstered seat and back. Note the use of contrast welts that outline the frame on this page and the application of a dramatic contemporary horizontal pattern on counter stools to the right. Blending striking textiles and elegant tailoring with multiple finish options makes the Newport collection unique.

921-895
Eastbluff Upholstered Counter Stool
23W x 24.25D x 37H in.



The Huntington server makes a welcome addition to any dining or entertainment area. The authenticity of the hammered metal frame features a textured aged iron finish. Three inset tempered glass shelves offer both storage and serving options.



920-862 Huntington Metal Server
50W x 18D x 38.5H in.

921-896 Eastbluff Upholstered Bar Stool
23W x 24.25D x 43H in.



LIVING ROOM



“WITH THE KEEN EMPHASIS PLACED ON ENTERTAINING TODAY, I THINK THE MOST IMPORTANT SPACE IN THE HOME IS THE LIVING ROOM, WHICH OFTEN ENCOMPASSES THE KITCHEN. I LOVE CREATING AN ENVIRONMENT THAT IS WARM, WELCOMING AND ENCOURAGES CONVERSATION.”

left:
920-955 Breakwater Metal and Stone Lamp Table
25W x 25D x 24.25H in.



5110-11BCC Sydney Chair
32W x 38D x 35.5H in.
Also Available: 5110-11B Sydney Chair

LL5450-25AA Sheffield Leather Cocktail Ottoman
43W x 43D x 19.5H in.
Also Available:
LL5450-25 Sheffield Leather Cocktail Ottoman

920-957 Harbor Raffia Lamp Table
25W x 25D x 24.25H in.

5100-33 Blaire Sofa
90W x 39D x 35H in.

With a contemporary geometric pattern on the door panels and extraordinary custom pulls, the stately 88-inch tall Pacific Coast Cabinet anchors any room as a single item or in pairs. The flexibility of the interior configuration makes the piece appropriate for the bedroom or living room. Behind doors that open 180 degrees are three full-extension self-closing drawers, one stationary shelf and four adjustable shelves. The cabinet is available in both the Sandstone and Sailcloth finishes.



920-950 Breakwater Accent Table
14 diameter x 22.25H in.

5110-11BCC Sydney Chair
32W x 38D x 35.5H in.

Also Available: 5110-11B Sydney Chair

920-975 Pacific Coast Cabinet
46W x 24D x 88H in.

920-957 Harbor Raffia Lamp Table
25W x 25D x 24.25H in.



920-950
Breakwater Accent Table
14 diameter x 22.25H in.

5520-11
Stratton Wing Chair
29.5W x 35D x 42H in.

920-957
Harbor Raffia Lamp Table
25W x 25D x 24.25H in.

5100-33
Blaire Sofa
90W x 39D x 35H in.

920-947
Harbor Raffia Cocktail Table
52W x 32D x 19.25H in.

5110-11BCC
Sydney Chair
32W x 38D x 35.5H in.

Also Available:
5110-11B Sydney Chair



“FOR MY PERSONAL RESIDENCE, I PREFER AN ENVIRONMENT THAT’S RELAXED AND INTIMATE, BUT AT THE SAME TIME REFINED WITH AN ELEVATED SENSE OF STYLE. TO ME, THAT’S TODAY’S DEFINITION OF NEW TRADITIONAL STYLE.”



For use as a cocktail table or for accent seating, ottomans are a wonderful addition to any décor. The Sheffield silhouette is fully customizable, in both cloth and leather, with or without the contrasting center stripe.



5450-25CC Sheffield Cocktail Ottoman

43W x 43D x 19.5H in.

Also Available: 5450-25 Sheffield Cocktail Ottoman

921-875C Magnolia Round Dining Table

60 diameter x 30H in.

920-201 La Jolla Woven Round Mirror

42 diameter x 3D in.

LL5450-25AA Sheffield Leather Cocktail Ottoman

43W x 43D x 19.5H in.

Also Available:

LL5450-25 Sheffield Leather Cocktail Ottoman

5530-11AA Avery Wing Chair

30.5W x 33D x 41H in.

Also Available:

5530-11 Avery Wing Chair





The 36-inch diameter Corona del Mar center table is shown here in the Sailcloth finish as a side table, creating an intimate living space. Below and on the opposite page are the Lido Isle hall chest and La Jolla mirror. The chests, available in Sandstone or Sailcloth feature raffia door fronts and an exceptional overlapping radial pattern of nailhead trim. The mirror is meticulously crafted from woven Abaca rope over a wooden frame.

above:

5530-11AA Avery Wing Chair

30.5W x 33D x 41H in.

Also Available: 5530-11 Avery Wing Chair

921-924C Corona Del Mar Center Table

36 diameter x 29H in.

left:

920-201 La Jolla Woven Round Mirror

42 diameter x 3D in.

921-973 Lido Isle Nailhead Hall Chest

54W x 17D x 38H in.

right:

920-201 La Jolla Woven Round Mirror

42 diameter x 3D in.

920-973 Lido Isle Nailhead Hall Chest

54W x 17D x 38H in.



The Sydney club chair, available in fabric or leather, is perhaps the most comfortable and versatile upholstered piece in the collection. The chair is offered with either aged brass or pewter ferrules and casters. It is shown here in the "AA" version, which is an exclusive fabric correlation featuring the Barclay blue stripe against a white linen ground. The chair is also available in your choice of custom fabrics.

5110-11BAA

Sydney Chair

32W x 38D x 35.5H in.

Also Available:

5110-11B Sydney Chair

920-976C

Jade Bar/Chest on Stand

42.25W x 19.25D x 78H in.

920-883

Seacliff Upholstered

Host Wing Chair

28W x 31D x 48H in.

920-201

La Jolla Woven Round Mirror

42 diameter x 3D in.

LL5451-46

Naples Leather Cocktail Ottoman

39W x 39D x 20.5H in.

920-869

Seaside Sideboard

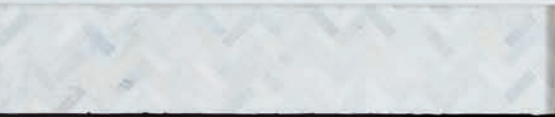
62W x 20D x 34H in.

920-950

Breakwater Accent Table

14 diameter x 22.25H in.





On the opposite page, the Balboa Island raffia chest is featured in Barclay's signature deep Marine blue coloration. Also available in the Sandstone and Seaglass finishes, the piece comes with an ultra-clear lay-on glass top to protect the raffia surface.



920-950
Breakwater Accent Table
14 diameter x 22.25H in.

5110-11BAA
Sydney Chair
32W x 38D x 35.5H in.
Also Available: 5110-11B Sydney Chair

922-974 Balboa Island Raffia Hall Chest
41W x 17D x 36H in.

5520-11 Stratton Wing Chair
29.5W x 35D x 42H in.



Blending design elements and materials is the essence of great styling. Here, the clean transitional lines of the Marina slipcover sofa and Stratton wing chairs are complemented by the Breakwater metal cocktail, whose cast stone top emulates honed limestone. The Harbor lamp table introduces raffia into the setting, while the La Jolla mirror over the fireplace adds woven Abaca as even another element.

920-201
La Jolla Woven Round Mirror
42 diameter x 3D in.

5520-11
Stratton Wing Chair
29.5W x 35D x 42H in.

920-957
Harbor Raffia Lamp Table
25W x 25D x 24.25H in.

5140-33WH
Marina Slipcover Sofa (White)
90W x 39.5D x 35H in.

920-945
Breakwater Metal and Stone
Cocktail Table
52W x 22D x 18.25H in.

920-950
Breakwater Accent Table
14 diameter x 22.25H in.







5520-11 Stratton Wing Chair

29.5W x 35D x 42H in.

922-974 Balboa Island Raffia Hall Chest

41W x 17D x 36H in.

920-940 Yacht Club Martini Table

14 diameter x 22.5H in.



920-945 Breakwater Metal and Stone Cocktail Table
52W x 22D x 18.25H in.

920-957 Harbor Raffia Lamp Table
25W x 25D x 24.25H in.

5140-33WH Marina Slipcover Sofa (White)
90W x 39.5D x 35H in.

920-950 Breakwater Accent Table
14 diameter x 22.25H in.

“WHETHER IT BE MY SIGNATURE BLUE AND WHITE OR ANOTHER PALETTE, I NEVER SHY AWAY FROM THE BOLD USE OF COLOR. IT DEFINES A SPACE AND CREATES AN ENERGY WITHIN THE ROOM THAT BECOMES FOUNDATIONAL TO THE OVERALL DESIGN.”



5380-11AA Nantucket Chair

33W x 34D x 37H in.

Also Available: 5380-11 Nantucket Chair

922-974 Balboa Island Raffia Hall Chest

41W x 17D x 36H in.

922-940 Yacht Club Martini Table

14 diameter x 22.5H in.

right:

5120-11 Grady Chair

33W x 33.5D x 35H in.

5120-44 Grady Ottoman

28W x 22.5D x 19H in.

920-940 Yacht Club Martini Table

14 diameter x 22.5H in.



Every space needs a statement piece that draws the eye when one enters the room. The Jade bar, which also functions as a chest or entertainment unit, is available in four finishes for exactly that purpose. Shown here in Marine blue, its hammered metal base and custom door hardware are captivating.



922-940 Yacht Club Martini Table
14 diameter x 22.5H in.

5530-11BB Avery Wing Chair
30.5W x 33D x 41H in.

Also Available:

5530-11 Avery Wing Chair

922-976C Jade Bar/Chest on Stand
42.25W x 19.25D x 78H in.



The interior of the Jade design has been intentionally configured to function as a free-standing bar, a door chest or an entertainment unit. There is one full-extension self-closing drawer, above which is a stationary shelf and two adjustable shelves. Grommets in the back panel accommodate electronics and the doors open 270 degrees for viewing purposes. Note how nicely the Yacht Club martini table in the Marine blue finish pairs with the color tones of the Avery wing chairs.



5530-11BB Avery Wing Chair
30.5W x 33D x 41H in.

Also Available:

5530-11 Avery Wing Chair

922-976C Jade Bar/Chest on Stand
42.25W x 19.25D x 78H in.

922-940 Yacht Club Martini Table
14 diameter x 22.5H in.



In this setting the soft lines of the Maxwell sofa are paired with the casual elegance of natural raffia on the Harbor cocktail table. The design features an inset metal band that separates the base from the top, creating a floating appearance. The top surface is ultra-clear tempered glass. Note the Yacht Club martini table in the Sandstone finish.



920-883 Seacliff Upholstered
Host Wing Chair
28W x 31D x 48H in.

920-940 Yacht Club Martini Table
14 diameter x 22.5H in.

5175-33 Maxwell Sofa
95.5W x 42.5D x 33H in.

920-957 Harbor Raffia Lamp Table
25W x 25D x 24.25H in.

920-947 Harbor Raffia Cocktail Table
52W x 32D x 19.25H in.

5340-11 Atwood Chair
32W x 35.5D x 38H in.





920-940
Yacht Club
Martini Table
14 diameter x 22.5H in.

5175-33
Maxwell Sofa
95.5W x 42.5D x 33H in.

920-947
Harbor Raffia
Cocktail Table
52W x 32D x 19.25H in.

5340-11
Atwood Chair
32W x 35.5D x 38H in.





920-974 Balboa Island Raffia Hall Chest
41W x 17D x 36H in.

5340-11 Atwood Chair
32W x 35.5D x 38H in.

922-940 Yacht Club Martini Table
14 diameter x 22.5H in.

The 87-inch Watermill sofa is shown here in a raffia textured fabric on the body with a contrast seat, back and throw pillows. It offers a relaxed traditional look with the option of being able to change out the seat and back cushions at a later date with completely different styling. In addition to a matching chair and ottoman, the Watermill series also includes a 74-inch apartment size sofa.



5418-11SW

Harlow Swivel Chair
32.5W x 38D x 35.5H in.

920-957

Harbor Raffia Lamp Table
25W x 25D x 24.25H in.

5150-33

Watermill Sofa
87W x 38D x 36H in.

920-947

Harbor Raffia Cocktail Table
52W x 32D x 19.25H in.

922-940

Yacht Club Martini Table
14 diameter x 22.5H in.



“THE COLORS THAT LOOK AND FEEL GREAT AT THE COAST ARE SIMPLY THOSE CLOSE AT HAND...BRIGHT MEDITERRANEAN BLUES, SALT WHITES AND SANDY BEIGES. THE PALETTE IS NATURAL, FRESH AND SOOTHING.”



922-940 Yacht Club Martini Table
14 diameter x 22.5H in.

5150-33 Watermill Sofa
87W x 38D x 36H in.

920-957 Harbor Raffia Lamp Table
25W x 25D x 24.25H in.

920-947 Harbor Raffia Cocktail Table
52W x 32D x 19.25H in.

5418-11SW Harlow Swivel Chair
32.5W x 38D x 35.5H in.

920-957 Harbor Raffia Lamp Table
25W x 25D x 24.25H in.



The Maxwell sofa is flanked here by the Redondo chair featuring an island-inspired leather-wrapped rattan frame and the Sydney club chair in an elegant toile. The Clayton cocktail ottoman shares the space, serving as a cocktail table and a comfortable spot for additional seating.



5301-11AA

Redondo Chair

28.5W x 33.5D x 34.5H in.

Also Available:

5301-11 Redondo Chair

922-974

Balboa Island Raffia Hall Chest

41W x 17D x 36H in.

LL5175-33

Maxwell Leather Sofa

95.5W x 42.5D x 33H in.

5455-46

Clayton Cocktail Ottoman

41W x 41D x 19.5H in.

5110-11BCC Sydney Chair

32W x 38D x 35.5H in.

Also Available:

5110-11B Sydney Chair

920-940

Yacht Club Martini Table

14 diameter x 22.5H in.



The Maxwell sofa, shown on page 72 in fabric, is featured here in leather. On the leather version, throw pillows are not included because they tend to slide off the smooth surface of the leather. The Clayton cocktail ottoman in the foreground, shown in fabric, is also available in leather.



LL5175-33 Maxwell Leather Sofa
95.5W x 42.5D x 33H in.

5455-46 Clayton Cocktail Ottoman
41W x 41D x 19.5H in.

5301-11AA Redondo Chair
28.5W x 33.5D x 34.5H in.
Also Available: 5301-11 Redondo Chair
922-974 Balboa Island Raffia Hall Chest
41W x 17D x 36H in.





862 Huntington Metal Server
50W x 18D x 38.5H in.

5110-11BCC Sydney Chair
32W x 38D x 35.5H in.
Also Available: 5110-11B Sydney Chair
922-974 Balboa Island Raffia Hall Chest
41W x 17D x 36H in.



920-955
Breakwater Metal
and Stone Lamp Table
25W x 25D x 24.25H in.

5185-33AA
Mercer Sofa
93W x 41D x 34.5H in.
Also Available:
5185-33
Mercer Sofa

5380-11
Nantucket Chair
33W x 34D x 37H in.

5455-46
Clayton Cocktail Ottoman
41W x 41D x 19.5H in.

920-990
Beachcomber Raffia Etagere
42W x 18D x 92H in.

921-940
Yacht Club Martini Table
14 diameter x 22.5H in.





The 93-inch Mercer sofa is a totally new interpretation of the classic track-arm design. Crisp tailoring is showcased with parallel welting on the arms that flows down and across the base. Anchoring the setting are a pair of Beachcomber raffia etageres, featuring a stationary shelf at the bottom, three ultra-clear tempered glass inset shelves in the middle and a glass insert in the top of the crown.

5380-11
Nantucket Chair
33W x 34D x 37H in.

5455-46
Clayton Cocktail Ottoman
41W x 41D x 19.5H in.

5185-33AA
Mercer Sofa
93W x 41D x 34.5H in.

Also Available:

5185-33
Mercer Sofa

920-990
Beachcomber Raffia Etageres
42W x 18D x 92H in.





5185-33AA
Mercer Sofa
93W x 41D x 34.5H in.
Also Available:
5185-33 Mercer Sofa

5455-46
Clayton Cocktail Ottoman
41W x 41D x 19.5H in.

920-974
Balboa Island Raffia Hall Chest
41W x 17D x 36H in.

5380-11
Nantucket Chair
33W x 34D x 37H in.

920-990
Beachcomber Raffia Etageres
42W x 18D x 92H in.



920-955
Breakwater Metal
and Stone Lamp Table
25W x 25D x 24.25H in.



BARCLAY BUTERA FINE FURNITURE
Interiors Atelier.AM

The inviting and elegant splayed-arm design of the Nantucket chair blends a wooden frame with raffia panels. Shown here in a striking contemporary pattern, the chair takes on a fresh coastal look with the Lido Isle chest in the background.



921-940
Yacht Club Martini Table
14 diameter x 22.5H in.

5380-11
Nantucket Chair
33W x 34D x 37H in.

921-973
Lido Isle Nailhead Hall Chest
54W x 17D x 38H in.

920-966
Breakwater Console
58W x 14D x 34.25H in.



5301-11
Redondo Chair
28.5W x 33.5D x 34.5H in.

920-957
Harbor Raffia Lamp Table
25W x 25D x 24.25H in.

5170-33
Morgan Sofa
86W x 43D x 37H in.

920-945
Breakwater Metal and
Stone Cocktail Table
52W x 22D x 18.25H in.

920-967
Harbor Raffia Console
64W x 16D x 32.25H in.

5454-45
Colby Ottoman
21.5W x 21.5D x 19.5H in.







The 86-inch Morgan sofa features spaced nailhead trim on the arms, base and back, serving to outline the clean transitional lines of the frame. In addition to a matching chair and ottoman the design is also offered as a sectional on page 100.

920-957
Harbor Raffia Lamp Table
25W x 25D x 24.25H in.

5170-33
Morgan Sofa
86W x 43D x 37H in.

920-945
Breakwater Metal and
Stone Cocktail Table
52W x 22D x 18.25H in.

923-624
Collins Bachelor's Chest
38W x 20D x 32H in.



The Redondo chair presents beautifully as an accent piece, floating in the room because of the woven Abaca detail on the outside back. They are shown here with a pair of Collins bachelor's chests in the Seaglass finish.



5301-11
Redondo Chair
28.5W x 33.5D x 34.5H in.

923-624
Collins Bachelor's Chest
38W x 20D x 32H in.



The Morgan sectional offers luxurious seating on a grand scale, with a diverse range of configurations. The spaced nailhead trim around the arms, base and inside back accentuate the clean contemporary lines of the design. Also shown in the setting is the Clayton ottoman, upholstered in a rich cream-colored leather.

920-976C
Jade Bar/Chest on Stand
42.25W x 19.25D x 78H in.

5170-53LCR
Morgan Left Arm Facing
Corner Sofa
98.5W x 43D x 37H in.

5170-51A
Morgan Armless Chair
25W x 43D x 37H in.

5170-52R
Morgan Right Arm Facing
Love Seat
55.5W x 43D x 37H in.

LL5455-46
Clayton Leather
Cocktail Ottoman
41W x 41D x 19.5H in.





The spa-like seafoam palette in this setting speaks to the laid back lifestyle of the coast. Showcasing new traditional style, the Sydney sofa features a tailored English arm, tight back, and castored legs. In the background, the Pacific Coast cabinet is shown in the Sailcloth finish. The Colby ottomans in front of the sofa serve as a stylish cocktail option, offering a smaller footprint, while adding a designer's touch of pattern with the contemporary animal skin.

5301-11

Redondo Chair

28.5W x 33.5D x 34.5H in.

5175-11

Maxwell Chair

39W x 40.5D x 33H in.

921-975

Pacific Coast Cabinet

46W x 24D x 88H in.

5454-45

Colby Ottoman

21.5W x 21.5D x 19.5H in.

920-957

Harbor Raffia Lamp Table

25W x 25D x 24.25H in.

5110-33B

Sydney Sofa

90.5W x 38D x 35.5H in.

920-967

Harbor Raffia Console

64W x 16D x 32.25H in.

923-940

Yacht Club Martini Table

14 diameter x 22.5H in.







5175-11 Maxwell Chair
39W x 40.5D x 33H in.

921-975 Pacific Coast Cabinet
46W x 24D x 88H in.

923-940 Yacht Club Martini Table
14 diameter x 22.5H in.

5301-11 Redondo Chair
28.5W x 33.5D x 34.5H in.





923-940 Yacht Club Martini Table
14 diameter x 22.5H in.

5175-11 Maxwell Chair
39W x 40.5D x 33H in.

921-975 Pacific Coast Cabinet
46W x 24D x 88H in.

920-967 Harbor Raffia Console
64W x 16D x 32.25H in.

5454-45 Colby Ottoman
21.5W x 21.5D x 19.5H in.





920-976C
Jade Bar/Chest on Stand
42.25W x 19.25D x 78H in.

5340-11
Atwood Chair
32W x 35.5D x 38H in.



“MY PERSONAL STYLE HAS CHANGED OVER THE YEARS, HAVING BEEN INFLUENCED BY LIFE EXPERIENCES, PLACES VISITED, AND PEOPLE I’VE MET. I HAVE NEVER BEEN ONE TO TAKE A CONVENTIONAL APPROACH TO DESIGN, BUT HAVE COME TO FIND VALUE IN COMFORT AND THE ABILITY TO CREATE SPACES THAT EVOKE A SENSE OF SERENITY.”



5450-25
Sheffield Cocktail Ottoman
43W x 43D x 19.5H in.

5340-11
Atwood Chair
32W x 35.5D x 38H in.

920-955
Breakwater Metal and Stone
Lamp Table
25W x 25D x 24.25H in.

5120-33
Grady Sofa
90W x 39.5D x 35H in.





5450-25
Sheffield Cocktail Ottoman
43W x 43D x 19.5H in.

5120-33
Grady Sofa
90W x 39.5D x 35H in.

920-955
Breakwater Metal and
Stone Lamp Table
25W x 25D x 24.25H in.

5340-11
Atwood Chair
32W x 35.5D x 38H in.





The 68-inch Promontory media console offers an elegant marriage of function and style. Across the bottom are three full-extension self-closing drawers. Two levels of open compartments above offer ample storage with recessed vertical partitions to accommodate a full length sound bar on either shelf.

920-945
Breakwater Metal and
Stone Cocktail Table
52W x 22D x 18.25H in.

5170-33
Morgan Sofa
86W x 43D x 37H in.

921-940
Yacht Club Martini Table
14 diameter x 22.5H in.

921-907
Promontory Media Console
68.25W x 18D x 34H in.





CHANEL



PALM BEACHES



BARCLAY BUTERA MODERN LIVING
BARCLAY BUTERA
Interiors Atelier AM



The 78-inch Leeward media console accommodates a full range of electronic components behind four sliding bypass doors which effectively conceal the entire interior of the piece. For those looking to showcase the furniture styling without sacrificing ready access to components, this silhouette offers an ideal design solution.



5340-11

Atwood Chair

32W x 35.5D x 38H in.

921-908

Leeward Media Console

78W x 19D x 34H in.





BARCLAY BUTERA NEWPORT

FINISHES



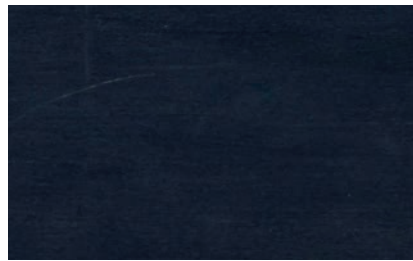
Sandstone - 920
Light Chestnut brown finish
on Quartered Elm



Sailcloth - 921
Soft whitewashed finish
on Cathedral Elm



Sandstone Top, Sailcloth Base - 924
Exclusive to the Corona del Mar
center tables (924C and 925C)



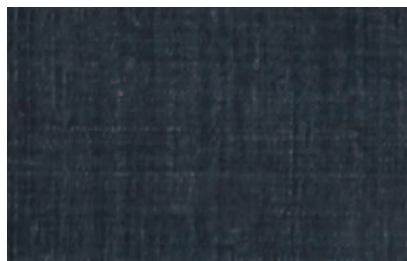
Marine - 922
Barclay's signature
deep navy blue finish on Maple



Seaglass - 923
A rich turquoise green
coloration on Maple



Natural Raffia



Marine Raffia



Seaglass Raffia

FABRICS



423311 Ventura
A casual woven with natural raw silk
characteristics in soft shades of ivory and linen
white, standard on the Crystal Cove bed,
Ruby bed bench, and all dining chairs.
100% Polyester.



494412 Palmera
A woven fabric that emulates the
natural color and texture of raffia,
standard on the Shorecliff canopy bed.
100% Polypropylene.

DINING TABLE TOP CONFIGURATIONS

920-877 Oceanfront
Rectangular Dining Table
88W x 44D x 30H in.



Shown with no leaves

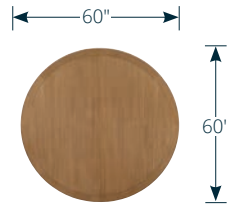


Shown with (1) 20 inch leaf

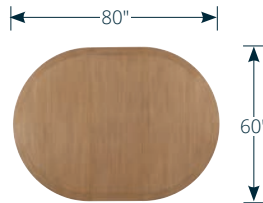


Shown with (2) 20 inch leaves

920-875C Magnolia
Round Dining Table
60 Diameter x 25.75H in.



Shown with no leaves



Shown with (1) 20 inch leaf

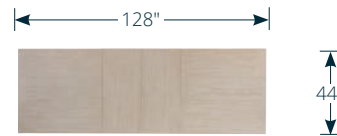
921-877 Oceanfront
Rectangular Dining Table
88W x 44D x 30H in.



Shown with no leaves

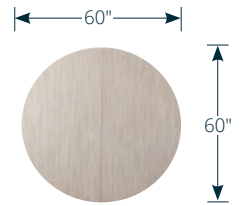


Shown with (1) 20 inch leaf

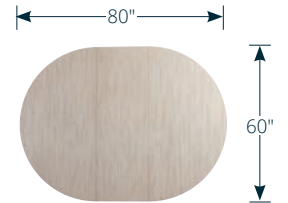


Shown with (2) 20 inch leaves

921-875C Magnolia
Round Dining Table
60 Diameter x 25.75H in.



Shown with no leaves



Shown with (1) 20 inch leaf

BEDROOM



920/921-131HB
Crystal Cove
Upholstered Panel Headboard
3/3 Twin
41.25W x 3.5D x 56.5H in.
Wooden framed padded upholstered panel.
Available only in standard fabric 423311
Ventura - A casual yet sophisticated woven,
with natural looking raw silk characteristics,
in soft shades of ivory and linen white.
Content: 100% polyester.
Metal bed frame required to complete bed.
See options.
Shown in -921 Sailcloth finish on pages 20
and 21

920/921-131UHB
Crystal Cove
Custom Upholstered Panel Headboard
3/3 Twin
41.25W x 3.5D x 56.5H in.
Wooden framed padded headboard panel.
Available in COM or Lexington
Upholstery fabrics.
Customers own material (COM) is limited to
fabrics only.
Metal bed frame required to complete bed.
See options.



920/921-133C Crystal Cove
Upholstered Panel Bed
5/0 Queen
63.75W x 87L x 61.5H in.
Wooden framed padded upholstered
headboard and footboard panels.
Available only in standard fabric 423311
Ventura - A casual yet sophisticated woven,
with natural looking raw silk characteristics,
in soft shades of ivory and linen white.
Content: 100% polyester.
Headboard 63.25W x 3.5D x 61.5H in.
Footboard 63.75W x 3D x 27.5H in.
Overall length 87 in.
Bottom of box springs to floor 9.25 in.
Bottom of Side Rails to floor 4 in.
Consists of:
133HB Crystal Cove Upholstered Panel
Headboard
133FB Crystal Cove Upholstered Footboard
133SR Side Rails/Support System 5/0 Queen



920/921-133HB
Crystal Cove
Upholstered Panel Headboard
5/0 Queen
63.25W x 3.5D x 61.5H in.
Wooden framed padded upholstered panel.
Available only in standard fabric 423311
Ventura - A casual yet sophisticated woven,
with natural looking raw silk characteristics,
in soft shades of ivory and linen white.
Content: 100% polyester.
Metal bed frame required to complete bed.
See options.

920/921-133UHB
Crystal Cove
Custom Upholstered Panel Headboard
5/0 Queen
63.25W x 3.5D x 61.5H in.
Wooden framed padded headboard panel.
Available in COM or Lexington
Upholstery fabrics.
Customers own material (COM) is limited to
fabrics only.
133UFB Crystal Cove Custom Upholstered
Footboard or metal bed frame required to
complete bed. See options.

920/921-133UFB
Crystal Cove
Custom Upholstered Footboard
5/0 Queen
63.75W x 3D x 27.5H in.
Wooden framed padded footboard panel.
Available in COM or Lexington
Upholstery fabrics.
Customers own material (COM) is limited to
fabrics only.
133UHB Crystal Cove Custom Upholstered Panel
Headboard and 133SR Wooden Side Rails
are required to complete bed.



920/921-134C
Crystal Cove
Upholstered Panel Bed
6/6 King
80.25W x 87L x 64H in.
Wooden framed padded upholstered
headboard and footboard panels.
Available only in standard fabric 423311
Ventura - A casual yet sophisticated woven,
with natural looking raw silk characteristics,
in soft shades of ivory and linen white.
Content: 100% polyester.
Headboard 79.75W x 3.5D x 64H in.
Footboard 80.25W x 3D x 27.5H in.
Overall length 87 in.
Bottom of box springs to floor 9.25 in.
Bottom of Side Rails to floor 4 in.
Consists of:
134HB Crystal Cove Upholstered Panel
Headboard
134FB Crystal Cove Upholstered Footboard
134SR Side Rails/Support System 5/0 Queen
Shown in -920 Sandstone finish on pages 12
and 26



920/921-134HB
Crystal Cove
Upholstered Panel Headboard
6/6 King
79.75W x 3.5D x 64H in.

Wooden framed padded upholstered panel.
Available only in standard fabric 423311
Ventura - A casual yet sophisticated woven,
with natural looking raw silk characteristics,
in soft shades of ivory and linen white.
Content: 100% polyester.
Metal bed frame required to complete bed.
See options.



920/921-134UHB
Crystal Cove
Custom Upholstered Panel Headboard
6/6 King
79.75W x 3.5D x 64H in.
Wooden framed padded headboard panel.
Available in COM or Lexington
Upholstery fabrics.
Customers own material (COM) is limited to
fabrics only.
134UFB Crystal Cove Custom Upholstered
Footboard or metal bed frame required to
complete bed. See options.
Shown in -920 Sandstone finish in 424911
Shown in -921 Sailcloth finish in 423321



920/921-134UFB
Crystal Cove
Custom Upholstered Footboard
6/6 King
80.25W x 3D x 27.5H in.
Wooden framed padded footboard panel.
Available in COM or Lexington
Upholstery fabrics.
Customers own material (COM) is limited to
fabrics only.

134UHB Crystal Cove Custom Upholstered Panel
Headboard and 134SR Wooden Side Rails
are required to complete bed.
Shown in -920 Sandstone finish in 424911
Shown in -921 Sailcloth finish in 423321 on
pages 16, 17, 18 and 19

920/921-135C
Crystal Cove
Upholstered Panel Bed
6/0 California King
76.25W x 91L x 64H in.
Wooden framed padded upholstered
headboard and footboard panels.
Available only in standard fabric 423311
Ventura - A casual yet sophisticated woven,
with natural looking raw silk characteristics,
in soft shades of ivory and linen white.
Content: 100% polyester.
Headboard 75.75W x 3.5D x 64H in.
Footboard 76.25W x 3D x 27.5H in.
Overall length 91 in.
Bottom of box springs to floor 9.25 in.
Bottom of Side Rails to floor 4 in.
Consists of:
135HB Crystal Cove Upholstered Panel
Headboard
135FB Crystal Cove Upholstered Footboard
135SR Side Rails/Support System 5/0 Queen



920/921-135HB
Crystal Cove Upholstered Panel Headboard
6/0 California King
75.75W x 3.5D x 64H in.
Wooden framed padded upholstered panel.
Available only in standard fabric 423311
Ventura - A casual yet sophisticated woven,
with natural looking raw silk characteristics,
in soft shades of ivory and linen white.
Content: 100% polyester.
Metal bed frame required to complete bed.
See options.

920/921-135UHB
Crystal Cove
Custom Upholstered Panel Headboard 6/0
California King
75.75W x 3.5D x 64H in.
Wooden framed padded headboard panel.
Available in COM or Lexington
Upholstery fabrics.
Customers own material (COM) is limited to
fabrics only.

920/921-135UFB
Crystal Cove
Custom Upholstered Footboard
6/0 California King
76.25W x 3D x 27.5H in.
Wooden framed padded footboard panel.
Available in COM or Lexington
Upholstery fabrics.
Customers own material (COM) is limited to
fabrics only.
135UHB Crystal Cove Custom Upholstered Panel
Headboard and 135SR Wooden Side Rails
are required to complete bed.



920/921-173C Shorecliff Canopy Bed
5/0 Queen
66W x 88.5L x 90H in.

Upholstered headboard panel available only in standard fabric 494412 Palmera - Natural raffia coloration and woven textural surface
Content: 100% Polypropylene. Decorative nailhead trim in aged bronze patina.
Converts from high post to low post.
Decorative caps in aged bronze patina are included for use when posts are in low position.

Headboard 66W x 4.5D x 90H in. in high position
66W x 4.5D x 59.75H in. in low position
Footboard 66W x 3.5D x 90H in. in high position
66W x 3.5D x 18.5 in. in low position

Overall length 88.5 in.
Bottom of box springs to floor 9.75 in.
Bottom of side rails to floor 4 in.

Consists of:
173HB Shorecliff Headboard
173FB Shorecliff Footboard
173SRCA Side Rails/Support/
Canopy Assembly 5/0 Queen



920/921-174C Shorecliff Canopy Bed
6/6 King
83W x 88.5L x 90H in.

Upholstered headboard panel available only in standard fabric 494412 Palmera - Natural raffia coloration and woven textural surface.
Content: 100% Polypropylene. Decorative nailhead trim in aged bronze patina.
Converts from high post to low post.
Decorative caps in aged bronze patina are included for use when posts are in low position.

Headboard 83W x 4.5D x 90H in. in high position
83W x 4.5D x 59.75H in low position
Footboard 83W x 3.5D x 90H in. in high position
83W x 3.5D x 18.5 in. in low position

Overall length 88.5 in.
Bottom of box springs to floor 9.75 in.
Bottom of side rails to floor 4 in.

Consists of:
174HB Shorecliff Headboard
174FB Shorecliff Footboard
174SRCA Side Rails/Support/
Canopy Assembly 6/6 King

Shown in -920 Sandstone finish on pages 4 and 5
Shown in -921 Sailcloth finish on pages 8 and 9

920/921-175C Shorecliff Canopy Bed
6/0 California King
79W x 92.5L x 90H in.

Upholstered headboard panel available only in standard fabric 494412 Palmera - Natural raffia coloration and woven textural surface.
Content: 100% Polypropylene. Decorative nailhead trim in aged bronze patina.
Converts from high post to low post.
Decorative caps in aged bronze patina are included for use when posts are in low position.

Headboard 79W x 4.5D x 90H in. in high position
79W x 4.5D x 59.75H in. in low position
Footboard 79W x 3.5D x 90H in high position
79W x 3.5D x 18.5 in. in low position
Overall length 92.5 in.

Bottom of box springs to floor 9.75 in.
Bottom of side rails to floor 4 in.

Consists of:
175HB Shorecliff Headboard
175FB Shorecliff Footboard
175SRCA Side Rails/Support/
Canopy Assembly 6/0 CA King



920-201
La Jolla Woven Round Mirror
42 diameter x 3D in.

Woven abaca rope over a wooden frame featuring a step-down design to accentuate the depth

Plate 31.625 diameter, 1.25 inch bevel
Shown on page 25, 27, 38, 40, 41, 55, 56, 57 and 62



920-205
La Costa Rectangular Raffia Mirror
52W x 2D x 32H in.

Raffia frame with metal insert
Plate 44.5W x 24.5H, 1 inch bevel
Can be used vertically or horizontally
Shown on pages 8 and 9



920/921-233 Garnet Breakfront Dresser
68W x 21D x 36H in.
12 full extension self closing drawers
Shown in -920 Sandstone finish on pages 3, 25 and 27



920/921-307 Goldenrod Chest
44W x 20D x 55.5H in.
6 full extension self closing drawers
Shown in -920 Sandstone finish on page 24



920/921-621 Cliff Nightstand
33.75W x 20D x 30H in.
3 full extension self closing drawers
Shown in -920 Sandstone finish on pages 12 and 15
Shown in -921 Sailcloth finish on page 19



920/921-622 Clay Night Table
20W x 18D x 29H in.
1 full extension self closing drawer,
X stretcher on base, tapered leg,
finished back
Shown in -920 Sandstone finish on page 14
Shown in -921 Sailcloth finish on page 23



920-537 Ruby Bed Bench
58W x 19D x 19H in.
Hammered metal base in a textured aged bronze patina finish. Available in COM or Lexington Upholstery fabrics that are applied railroaded. COM requires 2 yards of 54 inch material with no repeat. Fabrics with a repeat in excess of 28" will require 20% additional yardage. Contrasting welt is available at no charge.
Shown in 302931 on page 6



920-537-01 Ruby Bed Bench
58W x 19D x 19H in.
Hammered metal base in a textured aged bronze patina finish. Upholstered seat available only in standard fabric 423311 Ventura- A casual yet sophisticated woven, with natural looking raw silk characteristics, in soft shades of ivory and linen white.
Content: 100% polyester.
Shown on pages 16, 17 and 18



920/921/922/923-624 Collins Bachelor's Chest
38W x 20D x 32H in.
2 doors with laser cut quartered grey elm fretwork, 2 adjustable shelves, grommets for wire management
Shown in -920 Sandstone finish on pages 5 and 7
Shown in -921 Sailcloth finish on pages 9 and 10
Shown in -922 Marine finish on pages 21 and 22
Shown in -923 Seaglass finish on pages 97, 98 and 99



767 Deluxe Metal Frame
3/3 Twin or 4/6 Full

768 Deluxe Metal Frame
5/0 Queen, 6/6 King, or 6/0 California King

DINING ROOM



920/921/922/923-852 Bayside Buffet
78W x 20D x 38H in.

4 full extension self closing drawers (3 felt lined and 1 divided for silver, silver liner can be placed in drawer of your choice).
2 adjustable shelves behind each set of doors, grommets for cord management
Shown in -920 Sandstone finish on pages 29 and 31

Shown in -921 Sailcloth finish on page 38
Shown in -922 Marine finish on pages 32 and 33
Shown in -923 Seaglass finish on page 40



920-862 Huntington Metal Server
50W x 18D x 38.5H in.
Hammered metal frame with flared feet in a textured finish, 3 inset tempered glass shelves
Shown on pages 46, 47 and 84



920/921-869 Seaside Sideboard
62W x 20D x 34H in.
4 full extension self closing drawers (2 center drawers are felt lined and a silver divider that can be placed in the drawer of your choice)
Shown in -920 Sandstone finish on pages 34, 37 and 59
Shown in -921 Sailcloth finish on pages 38 and 39



920/921-875C
Magnolia Round Dining Table
60 diameter x 30H in.
Extends to oval shape with (1) 20 inch leaf
Metal accents on base
Bottom of apron to floor 25.75 in.
Consists of:
875T Magnolia Dining Table Top
60 diameter x 4.25H in.
875B Magnolia Dining Table Base
39W x 39D x 25.75H in.
Seats 8 utilizing leaf
Shown in -920 Sandstone finish on page 35
Shown in -921 Sailcloth finish on pages 39 and 54



920/921-877

Oceanfront Rectangular Dining Table
88W x 44D x 30H in.

Extends to 128W x 44D x 30H in. with

(2) 20 inch leaves

Metal accents on base

Bottom of apron to floor 25.75 in.

Seats 12 utilizing leaves

SOME ASSEMBLY REQUIRED

Shown in -920 Sandstone finish on pages 28, 29
and 30

Shown in -921 Sailcloth finish on pages 38
and 41



920/921-880-01 Eastbluff Upholstered Side Chair
19.75W x 26.25D x 40H in.

Seat 19.75W x 19.75D x 19H in.

Slight concave back, tapered legs.

Available only in standard fabric 423311

Ventura- A casual yet sophisticated woven,
with natural looking raw silk characteristics,
in soft shades of ivory and linen white.

Content: 100% polyester.



920/921-880 Eastbluff Upholstered Side Chair
19.75W x 26.25D x 40H in.

Seat 19.75W x 19.75D x 19H in.

Slight concave back, tapered legs.

Available in COM, Lexington Upholstery

fabrics, a combination of any two fabrics,
or Lexington Upholstery leathers. If no
fabric is specified, chair will ship in the
standard cover.

Shown in -920 Sandstone finish in 300831 on
pages 28, 29, 30 and 31

Shown in -921 Sailcloth finish in 517921 on
pages 38 and 41



920/921-881-01 Eastbluff Upholstered Arm Chair
23W x 26.25D x 40H in.

Arm 25.5H in.

Seat 20.5W x 19.75D x 19H in.

Slight concave back, tapered legs.

Available only in standard fabric 423311

Ventura- A casual yet sophisticated woven,
with natural looking raw silk characteristics,
in soft shades of ivory and linen white.

Content: 100% polyester.



920/921-881 Eastbluff Upholstered Arm Chair
23W x 26.25D x 40H in.

Arm 25.5H in.

Seat 20.5W x 19.75D x 19H in.

Slight concave back, tapered legs.

Available in COM, Lexington Upholstery

fabrics, a combination of any two fabrics,
or Lexington Upholstery leathers. If no
fabric is specified, chair will ship in the
standard cover.

Shown in -920 Sandstone finish in 302931
on pages 34, 35, 36 and 37

Shown in -921 Sailcloth finish in 423321
on pages 38 and 39



920/921-883-01 Seacliff Upholstered
Host Wing Chair

28W x 31D x 48H in.

Arm 25H in.

Seat 23W x 21.5D x 19H in.

Includes (1) kidney pillow - 20W x 1.5D x 7.75H in.
Available only in standard fabric 423311

Ventura- A casual yet sophisticated woven,
with natural looking raw silk characteristics,
in soft shades of ivory and linen white.

Content: 100% polyester.



920/921-883 Seacliff Upholstered
Host Wing Chair
28W x 31D x 48H in.
Arm 25H in.
Seat 23W x 21.5D x 19H in.
Includes (1) kidney pillow - 20W x 1.5D x 7.75H in.
Available in COM, Lexington Upholstery fabrics, a combination of any two fabrics, or Lexington Upholstery leathers. If no fabric is specified, chair will ship in the standard cover.
Shown in -920 Sandstone finish in 301531 on pages 28, 29, 31, 34, 35 and 72
Shown in -921 Sailcloth finish in 517921 on pages 40 and 41



920/921-895-01 Eastbluff Upholstered
Counter Stool
23W x 24.25D x 37H in.
Arm 30.5H in.
Seat 20.5W x 19.75D x 24H in.
Slight concave back, tapered legs.
Metal kickplate in aged bronze patina.
Available only in standard fabric 423311
Ventura-A casual yet sophisticated woven, with natural looking raw silk characteristics, in soft shades of ivory and linen white.
Content: 100% polyester.



920/921-895 Eastbluff Upholstered
Counter Stool
23W x 24.25D x 37H in.
Arm 30.5H in.
Seat 20.5W x 19.75D x 24H in.
Slight concave back, tapered legs.
Metal kickplate in aged bronze patina.
Available in COM, Lexington Upholstery fabrics, a combination of any two fabrics, or Lexington Upholstery leathers. If no fabric is specified, stool will ship in the standard cover.
Shown in -920 Sandstone finish in 424431 with contrast welt in 424411 on page 44
Shown in -921 Sailcloth finish in 805531 on page 45



920/921-896-01 Eastbluff Upholstered Bar Stool
23W x 24.25D x 43H in.
Arm 36.5H in.
Seat 20.5W x 19.75D x 30H in.
Slight concave back, tapered legs.
Metal kickplate in aged bronze patina.
Available only in standard fabric 423311
Ventura-A casual yet sophisticated woven, with natural looking raw silk characteristics, in soft shades of ivory and linen white.
Content: 100% polyester.



920/921-896 Eastbluff Upholstered Bar Stool
23W x 24.25D x 43H in.
Arm 36.5H in.
Seat 20.5W x 19.75D x 30H in.
Slight concave back, tapered legs.
Metal kickplate in antique brass finish.
Available in COM, Lexington Upholstery fabrics, a combination of any two fabrics, or Lexington Upholstery leathers. If no fabric is specified, stool will ship in the standard cover.
Shown in -920 Sandstone finish in 424431 with contrast welt in 424411 on page 44
Shown in -921 Sailcloth finish in 522621 on pages 46 and 47

LIVING ROOM



920/921-924C
Corona Del Mar Center Table
36 diameter x 29H in.
Classic urn design with a cast resin post
Consists of:
924T Corona Del Mar Center Table Top
36 diameter x 1.75H in.
924B Corona Del Mar Center Table Base
28 diameter x 27.25H in.
Shown in -920 Sandstone finish on pages 13
and 24



920/921-925C
Corona Del Mar Center Table
48 diameter x 29H in.
Classic urn design with a cast resin post
Consists of:
925T Corona Del Mar Center Table Top
48 diameter x 1.75H in.
924B Corona Del Mar Center Table Base
28 diameter x 27.25H in.
Shown in -920 Sandstone finish on pages
42 and 43
Shown in -921 Sailcloth finish on page 56



924-924C
Corona Del Mar Center Table
36 diameter x 29H in.
Classic urn design with a cast resin post,
920 Sandstone top and 921 Sailcloth base
Consists of:
920-924T Corona Del Mar Center Table Top
36 diameter x 1.75H in.
921-924B Corona Del Mar Center Table Base
28 diameter x 27.25H in.



924-925C Corona Del Mar Center Table
48 diameter x 29H in.
Classic urn design with a cast resin post,
920 Sandstone top and 921 Sailcloth base
Consists of:
920-925T Corona Del Mar Center Table Top
48 diameter x 1.75H in.
921-924B Corona Del Mar Center Table Base
28 diameter x 27.25H in.



920/921/922/923-940 Yacht Club Martini Table
14 diameter x 22.5H in.
Classic urn design
Shown in -920 Sandstone finish on pages 26,
64, 67, 72, 74 and 81
Shown in -921 Sailcloth finish on pages 87
and 114
Shown in -922 Marine Blue finish on pages 66,
68, 70, 71, 75, 77 and 78
Shown in -923 Seaglass finish on pages 103,
105 and 106



920-945
Breakwater Metal and Stone
Cocktail Table
52W x 22D x 18.25H in.
Hammered metal base with flared feet in an
aged bronze patina. Cast stone top has the
appearance of honed limestone
Shown on page 62, 63, 65, 94, 96 and 114



920-947
Harbor Raffia Cocktail Table
52W x 32D x 19.25H in.
Clad in raffia with mitered corners. Design
gives the appearance of a floating top with
a decorative metal band separating the top
and base. Ultra clear tempered glass top.
Shown on pages 52, 53, 73, 74, 77 and 78



920-950
Breakwater Accent Table
14 diameter x 22.25H in.
Contemporary U-shaped hammered metal
cross stretchers on the base, finished in
an aged bronze patina. Cast stone top
has the appearance of honed limestone
Shown on pages 50, 52, 58, 59, 60, 63 and 65



920-955
 Breakwater Metal and Stone Lamp Table
 25W x 25D x 24.25H in.
 Hammered metal base with flared feet in an aged bronze patina. Cast stone top has the appearance of honed limestone
 Shown on pages 48, 62, 86, 91, 110, 111, 112, 113 and Back Cover



920-957
 Harbor Raffia Lamp Table
 25W x 25D x 24.25H in.
 Clad in raffia with mitered corners. Design gives the appearance of a floating top with a decorative metal band separating the top and base. Ultra clear tempered glass top.
 Shown on pages 49, 52, 53, 62, 65, 73, 76, 78, 79, 94, 95, 96 and 103



920-966
 Breakwater Console
 58W x 14D x 34.25H in.
 Hammered metal base with flared feet in an aged bronze patina. Cast stone top has the appearance of honed limestone
 Shown on page 93



920-967
 Harbor Raffia Console
 64W x 16D x 32.25H in.
 Clad in raffia with mitered corners. Design gives the appearance of a floating top with a decorative metal band separating the top and base. Ultra clear tempered glass top.
 Shown on pages 95, 103 and 107



920/922/923-974
 Balboa Island Raffia Hall Chest
 41W x 17D x 36H in.
 3 full extension self closing drawers with raffia front panels, end panels, and top. Ultra clear lay on top.
 Shown in -920 Sandstone finish on pages 11, 75 and 90
 Shown in -922 Marine finish on pages 61, 64, 66, 80, 81, 83 and 85
 Shown in -923 Seaglass finish on pages 16, 17 and 18



920/921-973
 Lido Isle Nailhead Hall Chest
 54W x 17D x 38H in.
 2 doors with woven raffia panels in the Sandstone finish and a radial pattern of decorative nailhead trim in an antique brass finish. When ordered in the Sailcloth finish, the raffia will remain in the Sandstone finish.
 4 adjustable shelves, grommet for cord management
 Shown in -920 Sandstone finish on page 57
 Shown in -921 Sailcloth finish on pages 56 and 92



920/921-975 Pacific Coast Cabinet
46W x 24D x 88H in.

Decorative geometric overlays on the 2 full-length doors that open 180 degrees. 4 adjustable shelves, 3 full extension self closing drawers, grommets for cord management

Shown in -920 Sandstone finish on pages 50 and 51

Shown in -921 Sailcloth finish on pages 102, 104, 105 and 106



920/921/922/923-976C
Jade Bar/Chest on Stand
42.25W x 19.25D x 78H in.

2 wrap-around doors, 2 adjustable shelves, 1 stationary shelf, 1 full extension self closing drawer, grommets for cord management, hammered metal base in a textured aged bronze patina

Consists of:

976D Jade/Bar Chest Deck
42W x 19D x 55.25H in.

920-976B Jade Bar/Chest Base
42.25W x 19.25D x 22.75H in.

Shown in -920 Sandstone finish on pages 58, 100, 108 and 109

Shown in -921 Sailcloth finish on pages 42 and 43

Shown in -922 Marine finish on pages 69, 70 and 71



920-990 Beachcomber Raffia Etager
42W x 18D x 92H in.

Raffia clad with mitered corners. Stationary wooden shelf at the base, 3 stationary shelves with tempered ultra clear glass and a glass insert in the top of the crown. Shown on pages 87, 89, 90 and Back Cover

MEDIA



920/921-907 Promontory Media Console
68.25W x 18D x 34H in.

2 shelves with recessed panels to allow use of sound bar on either shelf. 3 full extension self closing drawers, grommets for cord management

Upper shelf opening: 63.75W x 8.75D x 4.5H in.

Lower shelf opening: 63.75W x 8.75D x 7.5H in.

Shown in -921 Sailcloth finish on page 115



920/921-908 Leeward Media Console
78W x 19D x 34H in.

4 sliding doors, 6 adjustable shelves, grommets for cord management

Shown in -921 Sailcloth finish on pages 116 and 117

UPHOLSTERY

Please note that, throughout this catalog, certain upholstery frames are shown with special application fabrics, pillows or trims that were selected by Barclay Butera. In those cases, a suffix has been added to the frame number – AA, BB or CC – to designate that specific correlation. When ordering the item, the suffix will automatically identify the custom combination. If you wish to choose your own fabric or COM, just order the frame number without the suffix and specify the fabrics, pillows and trims of your choice.



5100-33 Blaire Sofa

90W x 39D x 35H in.

Arm: 24H in., Seat: 18.5H in.

Inside: 76.5W x 23D in.

Standard Seat: Ultra Down

Standard Back: Blend Down

Standard Features: Two 20" Lux Down Throw

Pillows, two 22" Lux Down Throw Pillows

Shown in 4244-11 Gr. 4, Tape on Skirt in 916-31,

two 20" Throw Pillows were omitted, two 22"

Throw Pillows in 3006-31 Gr. 7 with Cord 917-31

Shown on Cover and pages 49, 52 and 53

Also Available:

5100-11 Blaire Chair

33W x 39D x 35H in

5100-33BB Blaire Sofa

5100-44 Blaire Ottoman

28W x 22.5D x 19H in.



5110-11BAA Sydney Chair

32W x 38D x 35.5H in.

Arm: 24H in., Seat: 19H in.

Inside: 22W x 23D in.

Standard Seat: Ultra Down

Standard Back: Tight

Standard Finish: Available only as shown - Laguna Sands

Standard Feature: Brass Casters on Front Legs

Available only as shown - Shown in 4244-11

Gr. 4, Contrast Stripe in 4244-31 Gr. 4,

finish Laguna Sands

Shown on pages 2, 58, 59 and 60

Also Available:

5110-11B Sydney Chair

LL5110-11B Sydney Leather Chair

LL5110-11BAA Sydney Leather Chair



5110-11B Sydney Chair

32W x 38D x 35.5H in.

Arm: 24H in., Seat: 19H in.

Inside: 22W x 23D in.

Standard Seat: Ultra Down

Standard Back: Tight

Standard Finish: Finish Selection is Required

Standard Feature: Brass Casters on Front Legs

Shown in 5178-21 Gr. 4, finish Laguna Sands

Also Available:

LL5110-11B Sydney Leather Chair



5110-11BCC Sydney Chair
 32W x 38D x 35.5H in.
 Arm: 24H in., Seat: 19H in.
 Inside: 22W x 23D in.
 Standard Seat: Ultra Down
 Standard Back: Tight
 Standard Finish: Available only as shown -
 Laguna Sands
 Standard Feature: Brass Casters on Front Legs
 Available only as shown - Shown in 8004-31,
 finish Laguna Sands
 Shown on Cover and pages 49, 50, 51, 53, 81
 and 85

Also Available:
 5110-11B Sydney Chair
 LL5110-11B Sydney Leather Chair

5110-11P Sydney Chair
 32W x 38D x 35.5H in.
 Arm: 24H in., Seat: 19H in.
 Inside: 22W x 23D in.
 Standard Seat: Ultra Down
 Standard Back: Tight
 Standard Finish: Finish Selection is Required
 Standard Feature: Pewter Casters on
 Front Legs

Also Available:
 LL5110-11P Sydney Leather Chair

5110-11PAA Sydney Chair
 32W x 38D x 35.5H in.
 Arm: 24H in., Seat: 19H in.
 Inside: 22W x 23D in.
 Standard Seat: Ultra Down
 Standard Back: Tight
 Standard Finish:

Available only as shown - Laguna Sands
 Standard Feature: Pewter Casters on
 Front Legs

Available only as shown -
 Shown in 4244-11 Gr. 4, Contrast Stripe in
 4244-31 Gr. 4, finish Laguna Sands

Also Available:
 5110-11P Sydney Chair
 LL5110-11P Sydney Leather Chair
 LL5110-11PAA Sydney Leather Chair

5110-11PCC Sydney Chair
 32W x 38D x 35.5H in.
 Arm: 24H in., Seat: 19H in.
 Inside: 22W x 23D in.
 Standard Seat: Ultra Down
 Standard Back: Tight
 Standard Finish: Available only as shown -
 Laguna Sands
 Standard Feature: Pewter Casters on Front Legs
 Available only as shown - Shown in 8004-31,
 finish Laguna Sands

Also Available:
 5110-11P Sydney Chair
 LL5110-11P Sydney Leather Chair



5110-33B Sydney Sofa
 90.5W x 38D x 35.5H in.
 Arm: 24H in., Seat: 19H in.
 Inside: 76.5W x 23D in.
 Standard Seat: Ultra Down
 Standard Back: Tight
 Standard Finish: Finish Selection is Required
 Standard Features: Two 20" Lux Down Throw
 Pillows, two 22" Lux Down Throw Pillows;
 Brass Casters on Front Legs
 Shown in 4233-21 Gr. 4, two 20" Throw Pillows in
 3006-21 Gr. 7, two 22" Throw Pillows in 5188-21
 Gr. 5, finish Laguna Sands
 Shown on page 103

Also Available:
 LL5110-33B Sydney Leather Sofa

5110-33P Sydney Sofa
 90.5W x 38D x 35.5H in.
 Arm: 24H in., Seat: 19H in.
 Inside: 76.5W x 23D in.
 Standard Seat: Ultra Down
 Standard Back: Tight
 Standard Finish: Finish Selection is Required
 Standard Features: Two 20" Lux Down Throw
 Pillows, two 22" Lux Down Throw Pillows;
 Pewter Casters on Front Legs

Also Available:
 LL5110-33P Sydney Leather Sofa



5110-44B Sydney Ottoman
 28W x 22.5D x 19H in.
 Seat: 16.5H in.
 Standard Seat: Ultra Down
 Standard Finish: Finish Selection is Required
 Standard Feature: Brass Casters
 Shown in 5178-21 Gr. 4, finish Laguna Sands

Also Available:
 LL5110-44B Sydney Leather Ottoman

5110-44P Sydney Ottoman
 28W x 22.5D x 19H in.
 Seat: 16.5H in.
 Standard Seat: Ultra Down
 Standard Finish: Finish Selection is Required
 Standard Feature: Pewter Casters

Also Available:
 LL5110-44P Sydney Leather Ottoman



5120-11 Grady Chair
 33W x 33.5D x 35H in.
 Arm: 24H in., Seat: 18.5H in.
 Inside: 22W x 23D in.
 Standard Seat: Ultra Down
 Standard Back: Blend Down
 Standard Finish: Finish Selection is Required
 Shown in 4248-31 Gr. 8, finish Laguna Sands
 Shown on page 67



5120-31 Grady Apartment Sofa
 77W x 39.5D x 35H in.
 Arm: 24H in., Seat: 18.5H in.
 Inside: 63.5W x 23.5D in.
 Standard Seat: Ultra Down
 Standard Back: Blend Down
 Standard Finish: Finish Selection is Required
 Standard Feature: Two 20" Lux Down
 Throw Pillows
 Shown in 2252-11 Gr. 4, two 20 Throw Pillows
 in 6371-71 Gr. 6 with Welt in 0126-75 Gr. 3,
 additional two 22" Throw Pillows in 4267-71
 Gr. 5 with Welt 0126-75 Gr. 3, finish Kona



5120-33 Grady Sofa
 90W x 39.5D x 35H in.
 Arm: 24H in., Seat: 18.5H in.
 Inside: 76.5W x 23D in.
 Standard Seat: Ultra Down
 Standard Back: Blend Down
 Standard Finish: Finish Selection is Required
 Standard Features: Two 20" Lux Down Throw
 Pillows, two 22" Lux Down Throw Pillows
 Shown in 4358-11 Gr. 3, two 20" Throw Pillows in
 5272-11 Gr. 5, two 22" Throw Pillows in 5180-11
 Gr. 3, finish Laguna Sands
 Shown on pages 110, 111, 112 and 113



5120-44 Grady Ottoman
28W x 22.5D x 19H in.
Seat: 16.5H in.
Standard Seat: Ultra Down
Standard Finish: Finish Selection is Required
Shown in 4248-31 Gr. 8, finish Laguna Sands
Shown on page 67



5125-11 Malcolm Chair
33W x 38D x 35H in.
Arm: 29.5H in., Seat: 18H in.
Inside: 25W x 23D in.
Standard Seat: Ultra Down
Standard Back: Blend Down
Standard Finish: Finish Selection is Required
Shown in 5226-21 Gr. 6, finish Charcoal



5125-33 Malcolm Sofa
90W x 40D x 35H in.
Arm: 29.5H in., Seat: 18H in.
Inside: 83W x 24D in.
Standard Seat: Ultra Down
Standard Back: Blend Down
Standard Finish: Finish Selection is Required
Standard Features: Two 20" Lux Down Throw Pillows, two 22" Lux Down Throw Pillows
Shown in 4191-11 Gr. 2, two 22" Throw Pillows in 5178-21 Gr. 4, two 20" Throw Pillows in 5278-11 Gr. 5 with Welt in 4233-21 Gr. 4, finish Laguna Sands

Also Available:
5125-31 Malcolm Apartment Sofa
77W x 40D x 35H in.
Arm: 29.5H in., Seat: 18H in.
Inside: 70W x 24D in.
Standard Seat: Ultra Down
Standard Back: Blend Down
Standard Finish: Finish Selection is Required
Standard Feature: Two 20" Lux Down Throw Pillows



5125-44 Malcolm Ottoman
29W x 22D x 18H in.
Seat: 16H in.
Standard Seat: Ultra Down
Standard Finish: Finish Selection is Required
Shown in 5226-21 Gr. 6, finish Charcoal



5140-11GY Marina Slipcover Chair (Gray)
33W x 38D x 35H in.
Arm: 29.5H in., Seat: 18H in.
Inside: 25W x 22.5D in.
Standard Seat: Ultra Down
Standard Back: Blend Down
Standard Feature: One 20" Lux Down Throw Pillow
Shown in 4107-71 Gr. 3, one 20" Throw Pillow in 2290-71 Gr. 4



5140-11WH Marina Slipcover Chair (White)
33W x 38D x 35H in.
Arm: 29.5H in., Seat: 18H in.
Inside: 25W x 22.5D in.
Standard Seat: Ultra Down
Standard Back: Blend Down
Standard Feature: One 20" Lux Down Throw Pillow
Shown in 4107-11 Gr. 3, one 20" Throw Pillow in 8006-31



5140-11SWG Marina Slipcover Swivel Chair (Gray)
33W x 38D x 35H in.
Arm: 29.5H in., Seat: 18H in.
Inside: 25W x 22.5D in.
Standard Seat: Ultra Down
Standard Back: Blend Down
Standard Features: One 20" Lux Down Throw Pillow; Swivel Mechanism
Shown in 4107-71 Gr. 3, one 20" Throw Pillow in 2290-71 Gr. 4



5140-11SWWH Marina Slipcover Swivel Chair (White)
33W x 38D x 35H in.
Arm: 29.5H in., Seat: 18H in.
Inside: 25W x 22.5D in.
Standard Seat: Ultra Down
Standard Back: Blend Down
Standard Features: One 20" Lux Down Throw Pillow; Swivel Mechanism
Shown in 4107-11 Gr. 3, one 20" Throw Pillow in 8006-31



5140-33GY Marina Slipcover Sofa (Gray)
90W x 39.5D x 35H in.
Arm: 29.5H in., Seat: 18H in.
Inside: 82W x 24D in.
Standard Seat: Ultra Down
Standard Back: Blend Down
Standard Features: Two 20" Lux Down Throw Pillows, two 22" Lux Down Throw Pillows
Shown in 4107-71 Gr. 3, two 22" Throw Pillows in 5074-71 Gr. 3, two 20" Throw Pillows in 3035-71 Gr. 5

Also Available:
5140-31GY Marina Slipcover Apartment Sofa (Gray)
77W x 39.5D x 35H in.
Arm: 29.5H in., Seat: 18H in.
Inside: 69W x 24D in.
Standard Seat: Ultra Down
Standard Back: Blend Down
Standard Feature: Two 20" Lux Down Throw Pillows



5140-33WH
Marina Slipcover Sofa (White)
90W x 39.5D x 35H in.
Arm: 29.5H in., Seat: 18H in.
Inside: 82W x 24D in.
Standard Seat: Ultra Down
Standard Back: Blend Down
Standard Features: Two 20" Lux Down
Throw Pillows; two 22" Lux Down Throw Pillows
Shown in 4107-11 Gr. 3 (standard fabric),
two 20" Throw Pillows in 4249-31 Gr. 5,
two 22" Throw Pillows in 5173-31 Gr. 5
Shown on pages 62, 63 and 65

Also Available:
5140-31WH
Marina Slipcover Apartment Sofa (White)

77W x 39.5D x 35H in.
Arm: 29.5H in., Seat: 18H in.
Inside: 69W x 24D in.
Standard Seat: Ultra Down
Standard Back: Blend Down
Standard Feature: Two 20" Lux Down
Throw Pillows



5140-44WH Marina Slipcover Ottoman (White)
29.5W x 22D x 19H in.
Seat: 16.5H in.
Standard Seat: Ultra Down
Shown in 4107-11 Gr. 3

Also Available:
5140-44GY Marina Slipcover Ottoman (Gray)
29.5W x 22D x 19H in.
Seat: 16.5H in.
Standard Seat: Ultra Down
Available in 4107-71 Gr. 3



5150-11 Watermill Chair
40.5W x 38D x 36H in.
Arm: 24H in., Seat: 18.5H in.
Inside: 23.5W x 22.5D in.
Standard Seat: Ultra Down
Standard Back: Blend Down
Standard Finish: Finish Selection is Required
Standard Feature: #1 Nailhead Trim -
3/8" Old Brass
Shown in 5188-21 Gr. 5, #1 Nailhead Trim -
3/8" Old Brass, finish Laguna Sands



5150-33 Watermill Sofa
87W x 38D x 36H in.
Arm: 24H in., Seat: 18.5H in.
Inside: 71W x 22.5D in.
Standard Seat: Ultra Down
Standard Back: Blend Down
Standard Finish: Finish Selection is Required
Standard Features: Two 20" Lux Down
Throw Pillows, two 22" Lux Down Throw Pillows,
#1 Nailhead Trim - 3/8" Old Brass
Shown in 4944-12 Gr. 4, Contrast Back and Seat
Cushions in 4258-11 Gr. 2, two 20" Throw
Pillows in 5176-31 Gr. 3, two 22" Throw Pillows
in 5175-31 Gr. 2, #1 Nailhead Trim -
3/8" Old Brass, finish Laguna Sands
Shown on pages 77 and 78

Also Available:
5150-31 Watermill Apartment Sofa
74W x 38D x 36H in.
Arm: 24H in., Seat: 18.5H in.
Inside: 58W x 22.5D in.
Standard Seat: Ultra Down
Standard Back: Blend Down
Standard Finish: Finish Selection is Required
Standard Features: Two 20" Lux Down Throw
Pillows, #1 Nailhead Trim - 3/8" Old Brass



5150-44 Watermill Ottoman
28W x 22.5D x 19H in.
Seat: 16.5H in.
Standard Seat: Ultra Down
Standard Finish: Finish Selection is Required
Standard Feature: #1 Nailhead Trim -
3/8" Old Brass
Shown in 5188-21 Gr. 5, #1 Nailhead Trim -
3/8" Old Brass, finish Laguna Sands



5170-11 Morgan Chair
36W x 41.5D x 37H in.
Arm: 24H in., Seat: 18.5H in.
Inside: 25W x 22D in.
Standard Seat: Ultra Down
Standard Back: Blend Down
Standard Finish: Finish Selection is Required
Standard Feature: #2 Nailhead Trim -
1/2" Old Brass
Shown in 4110-31 Gr. 3, #2 Nailhead Trim -
1/2" Old Brass, finish Laguna Sands



5170-33 Morgan Sofa
86W x 43D x 37H in.
Arm: 24H in., Seat: 18.5H in.
Inside: 75.5W x 23.5D in.
Standard Seat: Ultra Down
Standard Back: Blend Down
Standard Finish: Finish Selection is Required
Standard Features: Two 20" Lux Down Throw
Pillows, #2 Nailhead Trim - 1/2" Old Brass
Shown in 4233-21 Gr. 4, two 20" Throw Pillows in
5178-21 Gr. 4, additional two 22" Throw Pillows
in 5179-21 Gr. 5, #8 Nailhead Trim -
1/2" Pewter, finish Cameo Shores
Shown on pages 94, 95, 96 and 114



5170-44 Morgan Ottoman
29.5W x 23.5D x 18.5H in.
Seat: 16.5H in.
Standard Seat: Ultra Down
Standard Finish: Finish Selection is Required
Standard Feature: #2 Nailhead Trim -
1/2" Old Brass
Shown in 4110-31 Gr. 3, #2 Nailhead Trim -
1/2" Old Brass, finish Laguna Sands



5170-51A Morgan Armless Chair
 25W x 43D x 37H in.
 Seat: 18.5H in.
 Inside: 25W x 23.5D
 Standard Seat: Ultra Down
 Standard Back: Blend Down
 Standard Finish: Finish Selection is Required
 Standard Feature: #2 Nailhead Trim -
 1/2" Old Brass
 Shown in 4183-11 Gr. 3, #2 Nailhead Trim -
 1/2" Old Brass, finish Laguna Sands
 Shown on pages 100 and 101



5170-51CR Morgan Corner Chair
 43W x 43D x 37H in.
 Seat: 18.5H in.
 Inside: 23.5W x 23.5D in.
 Standard Seat: Ultra Down
 Standard Back: Blend Down
 Standard Finish: Finish Selection is Required
 Standard Features: One 20" Lux Down
 Throw Pillow, one 22" Lux Down Throw Pillow,
 #2 Nailhead Trim - 1/2" Old Brass
 Shown in 4183-11 Gr. 3, one 20" Throw Pillow in
 3134-11 Gr. 3, one 22" Throw Pillow in 4249-11
 Gr. 5, finish Laguna Sands



5170-52A Morgan Armless Love Seat
 50W x 43D x 37H in.
 Seat: 18.5H in.
 Inside: 50W x 23.5D in.
 Standard Seat: Ultra Down
 Standard Back: Blend Down
 Standard Finish: Finish Selection is Required
 Standard Feature: #2 Nailhead Trim -
 1/2" Old Brass
 Shown in 4183-11 Gr. 3, #2 Nailhead Trim -
 1/2" Old Brass, finish Laguna Sands



5170-52L Morgan Left Arm Facing Love Seat
 55.5W x 43D x 37H in.
 Arm: 24H in., Seat: 18.5H in.
 Inside: 50W x 23.5D in.
 Standard Seat: Ultra Down
 Standard Back: Blend Down
 Standard Finish: Finish Selection is Required
 Standard Features: One 20" Lux Down Throw
 Pillow, one 22" Lux Down Throw Pillow,
 #2 Nailhead Trim - 1/2" Old Brass
 Shown in 4183-11 Gr. 3, one 20" Throw Pillow in
 3134-11 Gr. 3, one 22" Throw Pillow in 4249-11
 Gr. 5, finish Laguna Sands



5170-52R Morgan Right Arm Facing Love Seat
 55.5W x 43D x 37H in.
 Arm: 24H in., Seat: 18.5H in.
 Inside: 50W x 23.5D in.
 Standard Seat: Ultra Down
 Standard Back: Blend Down
 Standard Finish: Finish Selection is Required
 Standard Features: One 20" Lux Down Throw
 Pillow, one 22" Lux Down Throw Pillow,
 #2 Nailhead Trim - 1/2" Old Brass
 Shown in 4183-11 Gr. 3, one 20" Throw Pillow in
 3134-11 Gr. 3, one 22" Throw Pillow in 4249-11
 Gr. 5, #2 Nailhead Trim - 1/2" Old Brass,
 finish Laguna Sands
 Shown on pages 100 and 101



5170-53L Morgan Left Arm Facing Sofa
 80.5W x 43D x 37H in.
 Arm: 24H in., Seat: 18.5H in.
 Inside: 75W x 23.5D in.
 Standard Seat: Ultra Down
 Standard Back: Blend Down
 Standard Finish: Finish Selection is Required
 Standard Features: One 20" Lux Down Throw
 Pillow, one 22" Lux Down Throw Pillow,
 #2 Nailhead Trim - 1/2" Old Brass
 Shown in 4183-11 Gr. 3, one 20" Throw Pillow in
 3134-11 Gr. 3, one 22" Throw Pillow in 4249-11
 Gr. 5, finish Laguna Sands



5170-53LCR
 Morgan Left Arm Facing Corner Sofa
 98.5W x 43D x 37H in.
 Arm: 24H in., Seat: 18.5H in.
 Inside: 74.5W x 23.5D in.
 Standard Seat: Ultra Down
 Standard Back: Blend Down
 Standard Finish: Finish Selection is Required
 Standard Features: Two 20" Lux Down Throw
 Pillows, two 22" Lux Down Throw Pillows,
 #2 Nailhead Trim - 1/2" Old Brass
 Shown in 4183-11 Gr. 3, two 20" Throw Pillows in
 3134-11 Gr. 3, two 22" Throw Pillows in 4249-11
 Gr. 5, #2 Nailhead Trim - 1/2" Old Brass, finish
 Laguna Sands
 Shown on pages 100 and 101





5170-53R
 Morgan Right Arm Facing Sofa
 80.5W x 43D x 37H in.
 Arm: 24H in., Seat: 18.5H in.
 Inside: 75W x 23.5D in.
 Standard Seat: Ultra Down
 Standard Back: Blend Down
 Standard Finish: Finish Selection is Required
 Standard Features: One 20" Lux Down Throw
 Pillow, one 22" Lux Down Throw Pillow,
 #2 Nailhead Trim - 1/2" Old Brass
 Shown in 4183-11 Gr. 3, one 20" Throw Pillow in
 3134-11 Gr. 3, one 22" Throw Pillow in 4249-11
 Gr. 5, finish Laguna Sands



5170-53RCR
 Morgan Right Arm Facing Corner Sofa
 98.5W x 43D x 37H in.
 Arm: 24H in., Seat: 18.5H in.
 Inside: 74.5W x 23.5D in.
 Standard Seat: Ultra Down
 Standard Back: Blend Down
 Standard Finish: Finish Selection is Required
 Standard Features: Two 20" Lux Down Throw
 Pillows, two 22" Lux Down Throw Pillows;
 #2 Nailhead Trim - 1/2" Old Brass
 Shown in 4183-11 Gr. 3, two 20" Throw Pillows in
 3134-11 Gr. 3, two 22" Throw Pillows in 4249-11
 Gr. 5, finish Laguna Sands



5170-57L
 Morgan Left Arm Facing Chaise
 30.5W x 70D x 37H in.
 Arm: 24H in., Seat: 18.5H in.
 Inside: 25W x 51D in.
 Standard Seat: Ultra Down
 Standard Back: Blend Down
 Standard Finish: Finish Selection is Required
 Standard Features: One 20" Lux Down Throw
 Pillow, one 22" Lux Down Throw Pillow,
 #2 Nailhead Trim - 1/2" Old Brass
 Shown in 4183-11 Gr. 3, one 20" Throw Pillow in
 3134-11 Gr. 3, one 22" Throw Pillow in 4249-11
 Gr. 5, finish Laguna Sands



5170-57R
 Morgan Right Arm Facing Chaise
 30.5W x 70D x 37H in.
 Arm: 24H in., Seat: 18.5H in.
 Inside: 25W x 51D in.
 Standard Seat: Ultra Down
 Standard Back: Blend Down
 Standard Finish: Finish Selection is Required
 Standard Features: One 20" Lux Down Throw
 Pillow, one 22" Lux Down Throw Pillow,
 #2 Nailhead Trim - 1/2" Old Brass
 Shown in 4183-11 Gr. 3, one 20" Throw Pillow in
 3134-11 Gr. 3, one 22" Throw Pillow in 4249-11
 Gr. 5, finish Laguna Sands



5175-11 Maxwell Chair
 39W x 40.5D x 33H in.
 Arm: 22H in., Seat: 18H in.
 Inside: 23.5W x 23.5D in.
 Standard Seat: Ultra Down
 Standard Back: Blend Down
 Standard Finish: Finish Selection is Required
 Shown in 5177-21 Gr. 4, finish Cameo Shores
 Shown on pages 102, 104, 105 and 106
 Also Available:
 LL5175-11 Maxwell Leather Chair



5175-33 Maxwell Sofa
 95.5W x 42.5D x 33H in.
 Arm: 22H in., Seat: 18H in.
 Inside: 76.5W x 25.5D in.
 Standard Seat: Ultra Down
 Standard Back: Blend Down
 Standard Finish: Finish Selection is Required
 Standard Features: Two 20" Lux Down Throw
 Pillows, two 22" Lux Down Throw Pillows
 Shown in 4244-31 Gr. 4, two 20" Throw Pillows -
 One Side in 4944-01 Gr. 4 / One Side and
 Welt in 4902-11 Gr. 5, two 22" Throw Pillows
 in 3006-31 Gr. 7, finish Laguna Sands
 Shown on pages 72, 73 and 74
 Also Available:
 LL5175-33 Maxwell Leather Sofa



5185-11 Mercer Chair
41W x 40D x 33H in.
Arm: 29H in., Seat: 18.5H in.
Inside: 24W x 24D in.
Standard Seat: Ultra Down
Standard Back: Blend Down
Shown in 2290-31 Gr. 4



5301-11 Redondo Chair
28.5W x 33.5D x 34.5H in.
Arm: 24.5H in., Seat: 17.5H in.
Inside: 23W x 21.5D in.
Standard Seat: Ultra Down
Standard Back: Blend Down
Standard Finish:

Available only as shown - Laguna Sands
Shown in 3006-21 Gr. 7, finish Laguna Sands
Shown on page 17, 94, 95, 98, 99, 102, 104
and 105



Shown in 5289-11 Gr. 6, Contrast Back Cushion
in 3134-11 Gr. 3, finish Laguna Sands
Shown on pages 108, 109, 110, 111, 113, 116
and 117

Also Available:
LL5340-11 Atwood Leather Chair



5185-33AA Mercer Sofa
93W x 41D x 34.5H in.
Arm: 29H in., Seat: 18.5H in.
Inside: 75W x 25D in.
Standard Seat: Ultra Down
Standard Back: Blend Down
Standard Features: Two 20" Lux Down Throw
Pillows, two 22" Lux Down Throw Pillows
Available only as shown - Shown in 4247-11
Gr. 4, two 20" Throw Pillows in 8006-31,
two 22" Throw Pillows in 8014-31
Shown on pages 86, 87, 88, 89, 90, 91 and
Back Cover

Also Available:
5185-33 Mercer Sofa
93W x 41D x 34.5H in.
Arm: 29H in., Seat: 18.5H in.
Inside: 75W x 25D in.
Standard Seat: Ultra Down
Standard Back: Blend Down
Standard Features: Two 20" Lux Down Throw
Pillows, two 22" Lux Down Throw Pillows



Shown in 5174-31 Gr. 3, finish Laguna Sands
Shown on pages 25 and 27

Also Available:
5301-11AA Redondo Chair



5380-11 Nantucket Chair
33W x 34D x 37H in.
Arm: 25.5H in., Seat: 18H in.
Inside: 22.5W x 21.5D in.
Standard Seat: Ultra Down
Standard Back: Blend Down
Standard Finish: Available only as shown -
Laguna Sands
Shown in 5564-31 Gr. 7, finish Laguna Sands
Shown on pages 86, 87, 88, 90, 91 and 92

Also Available:
5380-11AA Nantucket Chair



5301-11AA Redondo Chair
28.5W x 33.5D x 34.5H in.
Arm: 24.5H in., Seat: 17.5H in.
Inside: 23W x 21.5D in.
Standard Seat: Ultra Down
Standard Back: Blend Down
Standard Finish: Available only as shown -
Laguna Sands
Available only as shown - Shown in 8004-31,
finish Laguna Sands
Shown on pages 80 and 83

Also Available:
5301-11 Redondo Chair



5380-11AA Nantucket Chair
33W x 34D x 37H in.
Arm: 25.5H in., Seat: 18H in.
Inside: 22.5W x 21.5D in.
Standard Seat: Ultra Down
Standard Back: Blend Down
Standard Finish: Available only as shown -
Laguna Sands
Available only as shown - Shown in 8055-31,
finish Laguna Sands
Shown on page 66

Also Available:
5380-11 Nantucket Chair



5185-44 Mercer Ottoman
30W x 23D x 19H in.
Seat: 16.5H in.
Standard Seat: Ultra Down
Shown in 2290-31 Gr. 4



5340-11 Atwood Chair
32W x 35.5D x 38H in.
Arm: 24.5H in., Seat: 19.5H in.
Inside: 24W x 21D in.
Standard Seat: Ultra Down
Standard Back: Blend Down
Standard Finish: Finish Selection is Required
Shown in 4250-31 Gr. 2, finish Laguna Sands
Shown on pages 73 and 75



5385-12 Mackenzie Dining Side Chair
23.5W x 29D x 41H in.
Seat: 18.5H in.
Inside: 23.5W x 20D in.
Standard Seat: Tight
Standard Back: Tight
Standard Feature: Brass Casters
Shown in 6411-71 Gr. 5



5385-13 Mackenzie Dining Arm Chair
25W x 30D x 41H in.
Arm: 24.5H in., Seat: 18.5H in.
Inside: 18W x 20D in.
Standard Seat: Tight
Standard Back: Tight
Standard Feature: Brass Casters
Shown in 5180-31 Gr. 3
Shown on pages 13, 24, 42 and 43



5412-23 Hyland Park Settee
59.5W x 34D x 31H in.
Arm: 23H in., Seat: 17.5H in.
Inside: 52W x 23D in.
Standard Seat: Ultra Down
Standard Back: Tufted
Standard Finish: Finish Selection is Required
Shown in 2224-11 Gr. 3, finish Charcoal
Also Available:
LL5412-23 Hyland Park Leather Settee



5418-11 Harlow Chair
32.5W x 38D x 35.5H in.
Arm: 24H in., Seat: 18H in.
Inside: 23.5W x 22D in.
Standard Seat: Ultra Down
Standard Back: Blend Down
Shown in 4244-31 Gr. 4, Contrast Back Cushion
in 5174-31 Gr. 3



5418-11SW Harlow Swivel Chair
32.5W x 38D x 35.5H in.
Arm: 24H in., Seat: 18H in.
Inside: 23.5W x 22D in.
Standard Seat: Ultra Down
Standard Back: Blend Down
Standard Feature: Swivel Mechanism
Shown in 4244-31 Gr. 4, Contrast Back Cushion
in 5174-31 Gr. 3
Shown on pages 76 and 79



5450-25 Sheffield Cocktail Ottoman
43W x 43D x 19.5H in.
Seat: 18.5H in.
Standard Seat: Tight
Standard Feature: #2 Nailhead Trim -
1/2" Old Brass (spaced)
Shown in 2204-12 Gr. 5, #8 Nailhead Trim -
1/2" Pewter
Shown on pages 110, 111 and 112

Also Available:
5450-25AA Sheffield Cocktail Ottoman
43W x 43D x 19.5H in.
Seat: 18.5H in.
Standard Seat: Tight
Standard Feature: #2 Nailhead Trim -
1/2" Old Brass (spaced)
Available only as shown - Shown in 4244-11
Gr. 4, Contrast Stripe in 4244-31 Gr. 4,
#2 Nailhead Trim - 1/2" Old Brass

5450-25CC Sheffield Cocktail Ottoman
LL5450-25 Sheffield Leather Cocktail Ottoman
LL5450-25AA
Sheffield Leather Cocktail Ottoman



5450-25CC Sheffield Cocktail Ottoman
43W x 43D x 19.5H in.
Seat: 18.5H in.
Standard Seat: Tight
Standard Feature: #14 Nailhead Trim -
1/2" Nickel (spaced)
Available only as shown - Shown in 4247-11
Gr. 4, Contrast Stripe in 4944-12 Gr. 4,
#14 Nailhead Trim - 1/2" Nickel
Shown on page 54

Also Available:
5450-25 Sheffield Cocktail Ottoman
5450-25AA Sheffield Ottoman
LL5450-25 Sheffield Leather Ottoman
LL5450-25AA Sheffield Leather Ottoman



5451-46 Naples Cocktail Ottoman
39W x 39D x 20.5H in.
Seat: 19H in.
Standard Seat: Tight
Standard Finish: Finish Selection is Required
Shown in 4249-11 Gr. 5, Leather Welt in 9563-71
Gr. 5, finish Kona
Also Available:
LL5451-46 Naples Leather Cocktail Ottoman



5454-45 Colby Ottoman
21.5W x 21.5D x 19.5H in.
Seat: 18.5H in.
Standard Seat: Tight
Standard Finish: Finish Selection is Required
Shown in 3008-21 Gr. 9, finish Cameo Shores
Shown on pages 95, 102, 103 and 107



Shown in 4250-31 Gr. 2, finish Cameo Shores
Shown on pages 12, 20 and 21
Also Available:
LL5454-45
Colby Leather Ottoman



5455-46 Clayton Cocktail Ottoman
41W x 41D x 19.5H in.
Seat: 18.5H in.
Standard Seat: Tight
Standard Finish: Finish Selection is Required
Shown in 4249-31 Gr. 5, finish Cameo Shores
Shown on pages 80, 81, 82, 86, 87, 88, 90
and 91
Also Available:
LL5455-46
Clayton Leather Cocktail Ottoman



5520-11 Stratton Wing Chair
29.5W x 35D x 42H in.
Arm: 24H in., Seat: 18H in.
Inside: 23W x 21.5D in.
Standard Seat: Ultra Down
Standard Back: Tight
Standard Finish: Finish Selection is Required
Shown in 5173-31 Gr. 5, finish Laguna Sands
Shown on pages 52 and 61
Shown in 6395-31 Gr. 4, finish Laguna Sands
Shown on pages 62, 63 and 64
Also Available:
LL5520-11 Stratton Leather Wing Chair



5530-11AA Avery Wing Chair
 30.5W x 33D x 41H in.
 Arm: 25H in., Seat: 19.5H in.
 Inside: 21.5W x 22D in.
 Standard Seat: Ultra Down
 Standard Back: Tight
 Standard Finish: Available only as shown -
 Cameo Shores

Standard Feature: #13 Nailhead Trim -
 3/8" Nickel
 Available only as shown - Shown in 8004-31,
 additional 20" Throw Pillow in 4244-11 Gr. 4
 with Mitered Tape in 944-31, #13 Nailhead
 Trim - 3/8" Nickel, finish Cameo Shores
 Shown on pages 55 and 56

Also Available:
 5530-11 Avery Wing Chair
 30.5W x 33D x 41H in.
 Arm: 25H in., Seat: 19.5H in.
 Inside: 21.5W x 22D in.
 Standard Seat: Ultra Down
 Standard Back: Tight
 Standard Finish: Finish Selection is Required
 Standard Feature: #1 Nailhead Trim -
 3/8" Old Brass

Also Available:
 5530-11BB Avery Wing Chair
 5530-11CC Avery Wing Chair
 LL5530-11 Avery Leather Wing Chair



5530-11BB Avery Wing Chair
 30.5W x 33D x 41H in.
 Arm: 25H in., Seat: 19.5H in.
 Inside: 21.5W x 22D in.
 Standard Seat: Ultra Down
 Standard Back: Tight
 Standard Finish: Available only as shown -
 Laguna Sands

Standard Feature: #1 Nailhead Trim -
 3/8" Old Brass
 Available only as shown - Shown in 8052-31,
 #1 Nailhead Trim - 3/8" Old Brass,
 finish Laguna Sands
 Shown on pages 68, 69, 70 and 71

Also Available:
 5530-11 Avery Wing Chair
 5530-11AA Avery Wing Chair
 5530-11CC Avery Wing Chair
 LL5530-11 Avery Leather Wing Chair



5530-11CC Avery Wing Chair
 30.5W x 33D x 41H in.
 Arm: 25H in., Seat: 19.5H in.
 Inside: 21.5W x 22D in.
 Standard Seat: Ultra Down
 Standard Back: Tight
 Standard Finish: Charcoal
 Standard Feature: #1 Nailhead Trim -
 3/8" Old Brass Available only as shown -
 Shown in 8094-21, #1 Nailhead Trim -
 3/8" Old Brass, finish Charcoal

Also Available:
 5530-11 Avery Wing Chair
 5530-11AA Avery Wing Chair
 5530-11BB Avery Wing Chair
 LL5530-11 Avery Leather Wing Chair

LEATHER UPHOLSTERY



LL5175-33 Maxwell Leather Sofa
 95.5W x 42.5D x 33H in.
 Arm: 22H in., Seat: 18H in.
 Inside: 76.5W x 25.5D in.
 Standard Seat: Ultra Down
 Standard Back: Blend Down
 Standard Finish: Finish Selection is Required
 Shown in 9013-11 Gr. 5, additional two 22"
 Throw Pillows in 3029-31 Gr. 3 with
 Cord 917-31, finish Laguna Sands
 Shown on pages 80, 81 and 82

Also Available:
 5175-33 Maxwell Sofa



LL5412-23 Hyland Park Leather Settee
 59.5W x 34D x 31H in.
 Arm: 23H in., Seat: 17.5H in.
 Inside: 52W x 23D in.
 Standard Seat: Ultra Down
 Standard Back: Tufted
 Standard Finish: Finish Selection is Required
 Shown in 9004-11 Gr. 2, finish Laguna Sands
 Shown on page 26

Also Available:
 5412-23 Hyland Park Settee



LL5450-25AA
 Sheffield Leather Cocktail Ottoman
 43W x 43D x 19.5H in.
 Seat: 18.5H in.
 Standard Seat: Tight
 Standard Feature: #2 Nailhead Trim -
 1/2" Old Brass (spaced)
 Available only as shown - Shown in 9013-11
 Gr. 5, Contrast Stripe in 9013-31 Gr. 5,
 #2 Nailhead Trim - 1/2" Old Brass
 Shown on Cover and pages 48, 49 and 55

Also Available:
 LL5450-25 Sheffield Leather Cocktail Ottoman
 5450-25 Sheffield Cocktail Ottoman
 5450-25AA Sheffield Cocktail Ottoman
 5450-25CC Sheffield Cocktail Ottoman



LL5451-46
 Naples Leather Cocktail Ottoman
 39W x 39D x 20.5H in.
 Seat: 19H in.
 Standard Seat: Tight
 Standard Finish: Finish Selection is Required
 Shown in 9014-31 Gr. 2, finish Laguna Sands
 Shown on pages 2, 58 and 59

Also Available:
 5451-46 Naples Cocktail Ottoman



LL5455-46
 Clayton Leather Cocktail Ottoman
 41W x 41D x 19.5H in.
 Seat: 18.5H in.
 Standard Seat: Tight
 Standard Finish: Finish Selection is Required
 Shown in 9004-11 Gr. 2, finish Charcoal
 Shown on pages 100 and 101

Also Available:
 5455-46 Clayton Cocktail Ottoman

SIGNATURE PILLOWS



9820-20B Barclay Butera Monogram Letter Throw Pillow (navy)
20W x 6D x 20H in.
Standard Fill: Lux Down
Available only as shown - Shown in 4244-31



9821-20B Barclay Butera Monogram Letter Throw Pillow (white)
20W x 6D x 20H in.
Standard Fill: Lux Down
Available only as shown - Shown in 4244-11



9822-20 Barclay Butera Throw Pillow
20W x 6D x 20H in.
Standard Fill: Lux Down
Available only as shown - Shown in 8055-31



9823-20 Barclay Butera Throw Pillow
20W x 6D x 20H in.
Standard Fill: Lux Down
Available only as shown -
Shown in 8004-31 / Cord: 917-31



9824-20 Barclay Butera Throw Pillow
20W x 6D x 20H in.
Standard Fill: Lux Down
Available only as shown - Shown in 8014-31



9825-20 Barclay Butera Throw Pillow
20W x 6D x 20H in.
Standard Fill: Lux Down
Available only as shown - Shown in 8006-31



9826-20 Barclay Butera Throw Pillow
20W x 6D x 20H in.
Standard Fill: Lux Down
Available only as shown -
Shown in 8052-31 / Welt: 4244-31



9827-20 Barclay Butera Throw Pillow
20W x 6D x 20H in.
Standard Fill: Lux Down
Available only as shown -
Shown in 8080-21 / Cord: 917-11



9828-20 Barclay Butera Throw Pillow
20W x 6D x 20H in.
Standard Fill: Lux Down
Available only as shown -
Shown in 8094-21 / Cord: 922-11



9829-20 Barclay Butera Throw Pillow
20W x 6D x 20H in.
Standard Fill: Lux Down
Available only as shown -
Shown in 8004- 21 / Welt: 4236-71



9830-20 Barclay Butera Throw Pillow
20W x 6D x 20H in.
Standard Fill: Lux Down
Available only as shown -
Shown in 8044-71

FURNITURE CARE:

- Avoid prolonged exposure to direct sunlight.
- Do not leave plastic or rubber materials on wood surfaces.
- Wipe up spills immediately.
- Clean with a non-silicone furniture polish, rubbing with the grain.
- Avoid common hazards such as hot dishes (use a protective pad), harsh solvents (nail polish remover, alcohol), wand abrasives.

STONE AND METAL CARE:

- Maintain with regular dusting.
- Wipe spills immediately.
- Never set drinks or liquids directly on wood, metal or stone surfaces.

UPHOLSTERY CARE:

See your Lexington Upholstery dealer, visit www.lexington.com, or call 336.474.5300, ext. 2.

- Never remove cushion covers for cleaning.
- Never use bleach or any tumble method of cleaning.

CONSTRUCTION NOTE:

In order to provide our customers with the best possible quality and value, this collection includes items or components produced outside the United States.

NOTE TO FURNITURE RETAILERS:

Possession of this catalog does not constitute authority to purchase, and the furnishing of this catalog does not constitute an offer by the Company to sell any of the items contained herein. Lexington Home Brands (LHB) reserves the right to alter specifications or discontinue items at any time without advance notice. All price lists and catalogs remain the property of LHB, and may not be copied or in any way duplicated without the express written consent of LHB, and must be returned, or made available, without cost, to LHB promptly should the relationship be terminated by either party. Failure to observe this restriction may result in termination, legal action or both.

FIND US ON THE WEB:

facebook.com/lexington
pinterest.com/lexhomebrands
twitter.com/lexhomebrands
instagram.com/lexhomebrands
youtube.com/lexingtonfurniture
vimeo.com/lexingtonfurniture



BARCLAY BUTERA NEWPORT



BARCLAY BUTERA NEWPORT



To purchase a Barclay Butera Newport catalog or locate a dealer in your area,
call 336.474.5300 ext. 2 or visit lexington.com.

LEXINGTON
HOME BRANDS

lexington.com

