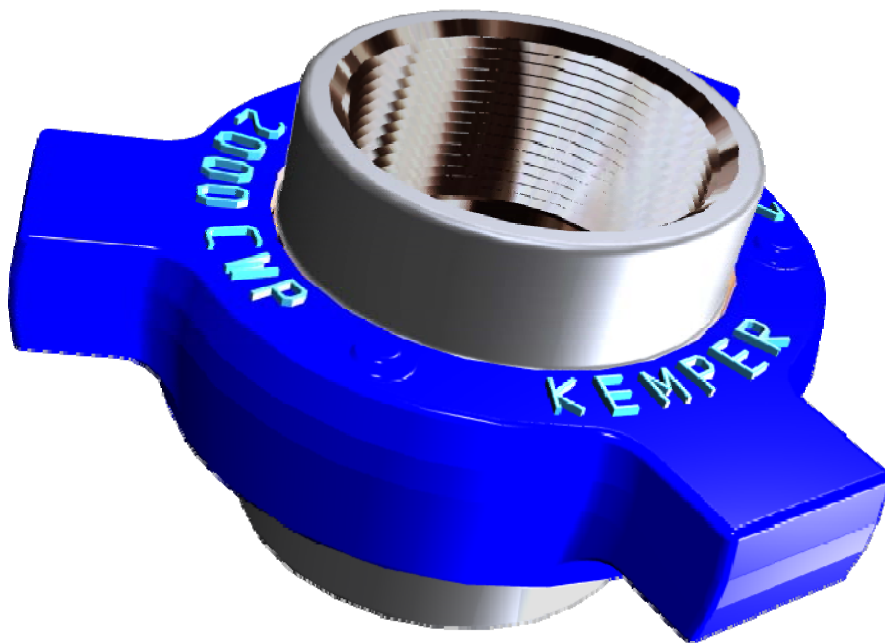


PRICE LIST

U-0708

Effective July 1, 2008
Current Revision – Q
Supersedes U-0107
Dated 01/29/09



KEMPER VALVE & FITTINGS CORPORATION

MANUFACTURING

P.O. Box 400 Wauconda, Illinois 60084 phone: 847-526-2166 or 800-323-1659 fax: 847-526-2241

SALES - WAREHOUSE

5650 Guhn Road, Suite 110 Houston, Texas 77040 phone: 713-462-1665 or 800-231-2724 fax: 713-462-1626

FLOW LINE DIVISION

2733 Industrial Drive, Sulphur, Oklahoma 73086 phone: 580-622-2048 or 888-533-3722 fax: 580-622-2058

CANADA SALES

8001 Edgar Industrial Avenue A1-Bay 1, Red Deer, Alberta T4P 3S2 phone: 403-348-0872 fax: 403-348-0873

COLORADO SALES & SERVICE

1423 4th Avenue, Grand Junction, Colorado 81501 phone: 970-609-5845 fax: 970-609-5839

TABLE OF CONTENTS

			Page				Page
Figure 100	1000 psi cwp	threaded ends	1	Figure 602	6000 psi cwp	butt weld sch xxh	14
Figure 101	1000 psi cwp	8 rnd eue threads	1	Figure 1002	10,000 psi cwp	threaded ends	15
Figure 200	2000 psi cwp	threaded ends	2	Figure 1002	10,000 psi cwp	butt weld sch 160	16
Figure 200	2000 psi cwp	butt weld sch 40	3	Figure 1002	10,000 psi cwp	butt weld sch xxh	16
Figure 200	2000 psi cwp	butt weld sch 80	4	Figure 1002	7500 psi cwp	combination ends	16
Figure 206	2000 psi cwp	threaded ends	5	Figure 1003	10,000 psi cwp	threaded ends	17
Figure 206	2000 psi cwp	butt weld sch 40	6	Figure 1003	7500 psi cwp	threaded ends	17
Figure 206	2000 psi cwp	butt weld sch 80	7	Figure 1003	10,000 psi cwp	butt weld sch 160	17
Figure 201	2000 psi cwp	threaded ends	8	Figure 1003	7500 psi cwp	butt weld sch xxh	17
Figure 201	3000 psi cwp	8 rnd eue threads	8	Figure 1502	15,000 psi cwp	threaded ends & nps	18
Figure 211	2000 psi cwp	threaded ends	8	Figure 1502	15,000 psi cwp	butt weld sch 160	19
Figure 207	2000 psi cwp	threaded ends	9	Figure 1502	15,000 psi cwp	butt weld sch xxh	19
Figure 207	2000 psi cwp	butt weld sch 40	9	Figure 2002	20,000 psi cwp	butt weld	20
Figure 207	2000 psi cwp	butt weld sch 80	9	Figure "G"	6000 psi cwp	threaded ends	20
Figure 300	2000 psi cwp	threaded ends	10	Viton Seal Rings			20
Figure 400	4000 psi cwp	threaded ends	10	Viton O'Rings			20
Figure 400	2500 psi cwp	butt weld sch 80	10	Sour Gas, Low Temp, & Specials			21
Figure 402	4000 psi cwp	threaded ends	11	Cautions and Warnings			22
Figure 600	6000 psi cwp	threaded ends	11	Safety Alert			23
Figure 602	6000 psi cwp	threaded ends	12	Terms and Conditions			24
Figure 602	6000 psi cwp	butt weld sch 80	13	Locations and Revisions			25
Figure 602	6000 psi cwp	butt weld sch 160	14				

GENERAL INFORMATION

PAYMENT TERMS:

Net 30 days

Seller reserves the right to place a service or interest charge on past due accounts at the highest rate permitted by law.

OTHER TERMS:

Product prices and materials of construction are subject to change without notice.

FREIGHT:

All prices apply FOB point of manufacture, Houston, Texas, or nearest available field stock.

Full freight allowed to domestic rail point or truck terminal nearest destination on shipments of 500 pounds or more.

Full freight allowed for 500 pounds or more within western Canada if shipped from our Red Deer Alberta warehouse.

MINIMUM ORDER:

Minimum invoice is twenty-five dollars (\$25.00), excluding transportation and taxes.

NOTE:

All assembly and part weights are approximate.

Price list is not inclusive of all oilfield unions and parts offered. Please consult sales office for complete information.



figure 100 - 1000 psi cwp* - 1500 psi test
threaded ends black nut / yellow subs

		PART NUMBER	WEIGHT POUNDS	CARTON QUANTITY	PRICE
2"	UNION	010200	5.87	15	28.60
	NUT	010293	2.8		24.40
	MALE SUB	010201	1.34		11.90
	FEMALE SUB	010202	1.73		14.90
2 1/2"	UNION	012500	9.94	8	86.20
	NUT	012593	4.82		28.10
	MALE SUB	012501	2.27		28.80
	FEMALE SUB	012502	2.85		35.00
3"	UNION	010300	13.15	6	76.30
	NUT	010393	5.39		45.50
	MALE SUB	010301	3.64		37.40
	FEMALE SUB	010302	4.12		41.70
4"	UNION	010400	22.70	3	107.70
	NUT	010493	9.58		74.80
	MALE SUB	010401	6.94		55.80
	FEMALE SUB	010402	6.18		65.00
5"	UNION	010500	29.58	2	337.50
	NUT	010593	11.03		159.40
	MALE SUB	010501	9.00		188.20
	FEMALE SUB	010502	9.55		219.10
6"	UNION	010600	43.62	1	301.10
	NUT	010693	17.07		125.10
	MALE SUB	010601	11.88		148.10
	FEMALE SUB	010602	14.68		173.00
8"	UNION	010800	58.87	1	562.70
	NUT	010893	17.74		202.40
	MALE SUB	010801	18.26		232.20
	FEMALE SUB	010802	22.87		281.00

figure 101 - 8 RND EUE - 1000 psi cwp* - 1500 psi test
union with O'Ring beige nut / yellow subs

5"	UNION	100550	33.03	2	466.50
	NUT	010593	11.03		159.40
	MALE SUB	100551	10.00		271.10
	FEMALE SUB WITH O'RING	100555	12.00		316.90
	O'RING	100594			15.90

*cwp is cold working pressure

figure 200 - 2000 psi cwp* - 3000 psi test
threaded ends blue nut / gray subs

		PART NUMBER	WEIGHT POUNDS	CARTON QUANTITY	PRICE
1"	UNION	020100	1.86	60	20.90
	NUT	020193	1.04		14.00
	MALE SUB	020101	.36		7.80
	FEMALE SUB	020102	.47		11.60
1 1/4"	UNION	021200	2.35	20	74.70
	NUT	021293	1.19		40.70
	MALE SUB	021201	.55		28.60
	FEMALE SUB	021202	.61		37.70
1 1/2"	UNION	021500	3.07	20	96.00
	NUT	021593	1.53		41.90
	MALE SUB	021501	.66		37.00
	FEMALE SUB	021502	.88		47.40
2"	UNION	020200	5.50	15	29.00
	NUT	020293	2.80		27.80
	MALE SUB	020201	1.20		15.40
	FEMALE SUB	020202	1.50		19.80
2 1/2"	UNION	022500	10.08	6	133.00
	NUT	022593	5.37		68.60
	MALE SUB	022501	2.11		57.70
	FEMALE SUB	022502	2.58		83.90
3"	UNION	020300	14.57	6	133.90
	NUT	020393	6.77		71.40
	MALE SUB	020301	3.66		48.30
	FEMALE SUB	020302	4.13		59.20
4"	UNION	020400	18.65	4	159.10
	NUT	020493	7.15		73.20
	MALE SUB	020401	5.33		77.60
	FEMALE SUB	020402	6.17		101.60
5"	UNION	020500	36.50	4	600.70
	NUT	020593	16.50		270.20
	MALE SUB	020501	9.50		292.30
	FEMALE SUB	020502	10.50		318.70
6"	UNION	020600	48.35	1	587.80
	NUT	020693	18.31		278.40
	MALE SUB	020601	13.65		301.50
	FEMALE SUB	020602	16.38		363.40
8"	UNION	020800	65.22	1	763.90
	NUT	020893	21.39		291.80
	MALE SUB	020801	19.1		391.70
	FEMALE SUB	020802	24.74		470.80
10"	UNION	021000	98.5	1	1,173.30
	NUT	021093	36.5		485.50
	MALE SUB	021001	27.5		601.40
	FEMALE SUB	021002	33.5		864.90

*cwp is cold working pressure



**figure 200 - 2000 psi cwp* - 3000 psi test
butt weld schedule 40 blue nut / gray subs**

		PART NUMBER	WEIGHT POUNDS	CARTON QUANTITY	PRICE
2"	UNION	020210	5.57	15	146.60
	NUT	020293	2.80		27.80
	MALE SUB	020211	1.31		85.80
	FEMALE SUB	020212	1.46		110.30
2 1/2"	UNION	022510	10.75	6	POR
	NUT	022593	5.75		POR
	MALE SUB	022511	2.25		POR
	FEMALE SUB	022512	2.75		POR
3"	UNION	020310	14.74	6	282.30
	NUT	020393	6.77		71.40
	MALE SUB	020311	3.80		132.50
	FEMALE SUB	020312	4.17		165.90
4"	UNION	020410	19.43	4	397.20
	NUT	020493	7.15		73.20
	MALE SUB	020411	5.78		176.50
	FEMALE SUB	020412	6.50		231.10
5"	UNION	020510	36.50	4	791.60
	NUT	020593	16.50		270.20
	MALE SUB	020511	9.50		437.00
	FEMALE SUB	020512	10.50		463.50
6"	UNION	020610	49.50	1	831.20
	NUT	020693	18.56		278.40
	MALE SUB	020611	14.39		480.60
	FEMALE SUB	020612	16.55		629.60
8"	UNION	020810	66.50	1	1,066.00
	NUT	020893	19.50		291.80
	MALE SUB	020811	20.50		614.90
	FEMALE SUB	020812	26.50		806.70
10"	UNION	021010	107.97	1	1,652.70
	NUT	021093	36.87		485.50
	MALE SUB	021011	34.26		953.90
	FEMALE SUB	021012	36.84		1,249.90

*cwp is cold working pressure

2 1/2" available - Price on Request



figure 200 - 2000 psi cwp* - 3000 psi test
butt weld schedule 80 blue nut / gray subs

		PART NUMBER	WEIGHT POUNDS	CARTON QUANTITY	PRICE
2"	UNION	020220	6.20	15	201.10
	NUT	020293	3.11		27.80
	MALE SUB	020221	1.48		107.60
	FEMALE SUB	020222	1.68		132.10
2 1/2"	UNION	022520	11.81	6	POR
	NUT	022593	6.23		POR
	MALE SUB	022521	2.65		POR
	FEMALE SUB	022522	2.94		POR
3"	UNION	020320	15.39	6	336.80
	NUT	020393	6.69		71.40
	MALE SUB	020321	4.19		154.30
	FEMALE SUB	020322	4.52		187.70
4"	UNION	020420	20.72	4	451.70
	NUT	020493	7.29		73.20
	MALE SUB	020421	6.59		198.30
	FEMALE SUB	020422	6.84		252.90
5"	UNION	020520	43.87	4	846.10
	NUT	020593	17.15		270.20
	MALE SUB	020521	12.08		458.80
	FEMALE SUB	020522	14.64		485.30
6"	UNION	020620	53.28	1	885.70
	NUT	020693	18.75		278.40
	MALE SUB	020621	16.63		502.40
	FEMALE SUB	020622	17.94		652.50
8"	UNION	020820	77.85	1	1,120.50
	NUT	020893	22.73		291.80
	MALE SUB	020821	25.64		636.70
	FEMALE SUB	020822	29.48		828.50
10"	UNION	021020	121.19	1	1,707.20
	NUT	021093	35.29		485.50
	MALE SUB	021021	43.65		975.70
	FEMALE SUB	021022	42.25		1,271.70

2 1/2" available - Price on Request

figure 206 - 2000 psi cwp* - 3000 psi test
union with O'Ring threaded ends blue nut / gray subs

		PART NUMBER	WEIGHT POUNDS	CARTON QUANTITY	PRICE
1"	UNION	260100	1.75	60	52.20
	NUT	260193	1.00		24.90
	MALE SUB WITH O-RING	260104	.25		24.90
	O-RING	260194			4.40
	See Figure 200 for Female Sub Specifications and Price				
1 1/4"	UNION	261200	2.50	20	106.80
	NUT	261293	1.25		40.70
	MALE SUB WITH O-RING	261204	.50		54.60
	O-RING	261294			6.10
1 1/2"	UNION	261500	3.00	20	97.10
	NUT	261593	1.50		41.90
	MALE SUB WITH O-RING	261504	.75		48.50
	O-RING	261594			6.10
2"	UNION	260200	5.75	15	74.10
	NUT	260293	3.00		27.80
	MALE SUB WITH O-RING	260204	1.25		37.40
	O-RING	260294			5.50
2 1/2"	UNION	262500	10.50	6	POR
	NUT	262593	5.75		POR
	MALE SUB WITH O-RING	262504	2.25		POR
	O-RING	262594			POR
3"	UNION	260300	14.25	6	147.90
	NUT	260393	6.75		71.40
	MALE SUB WITH O-RING	260304	3.50		57.60
	O-RING	260394			5.50
4"	UNION	260400	18.25	4	199.10
	NUT	260493	7.00		73.20
	MALE SUB WITH O-RING	260404	5.25		84.70
	O-RING	260494			5.50
6"	UNION	260600	46.75	1	778.90
	NUT	260693	16.50		278.40
	MALE SUB WITH O-RING	260604	13.25		312.10
	O-RING	260694			15.90
8"	UNION	260800	63.50	1	1,389.40
	NUT	260893	20.00		291.80
	MALE SUB WITH O-RING	260804	19.00		641.00
	O-RING	260894			21.90
10"	UNION	261000	93.50	1	1,446.50
	NUT	261093	35.75		485.50
	MALE SUB WITH O-RING	261004	27.50		624.60
	O-RING	261094			26.70

*cwp is cold working pressure

5" available - Price on Request

**figure 206 - 2000 psi cwp* - 3000 psi test
union with O'Ring blue nut / gray subs
butt weld schedule 40**

		PART NUMBER	WEIGHT POUNDS	CARTON QUANTITY	PRICE
2"	UNION	260210	5.25	15	172.20
	NUT	260293	2.50		27.80
	MALE SUB WITH O-RING	260214	1.25		86.30
	FEMALE SUB	020212	1.50		110.30
	O-RING	260294			5.50
2 1/2"	UNION	262510	10.75	6	POR
	NUT	262593	5.75		POR
	MALE SUB WITH O-RING	262514	2.25		POR
	FEMALE SUB	022512	2.75		POR
	O-RING	262594			POR
3"	UNION	260310	14.50	6	304.00
	NUT	260393	6.75		71.40
	MALE SUB WITH O-RING	260314	3.50		104.30
	FEMALE SUB	020312	4.25		165.90
	O-RING	260394			5.50
4"	UNION	260410	18.50	4	426.70
	NUT	260493	7.00		73.20
	MALE SUB WITH O-RING	260414	5.25		143.60
	FEMALE SUB	020412	6.25		231.10
	O-RING	260494			5.50
6"	UNION	260610	45.50	1	1,102.40
	NUT	260693	16.50		278.40
	MALE SUB WITH O-RING	260614	14.00		475.90
	FEMALE SUB	020612	15.00		629.60
	O-RING	260694			15.90
8"	UNION	260810	65.50	1	1,731.90
	NUT	260893	20.00		291.80
	MALE SUB WITH O-RING	260814	19.00		832.90
	FEMALE SUB	020812	26.50		806.70
	O-RING	260894			21.90
10"	UNION	261010	104.75	1	2,131.40
	NUT	261093	35.75		485.50
	MALE SUB WITH O-RING	261014	34.75		1,012.50
	FEMALE SUB	021012	34.25		1,249.90
	O-RING	261094			26.70

*cwp is cold working pressure

2 1/2 & 5" available - Price on Request

figure 206 - 2000 psi cwp* - 3000 psi test
union with O'Ring blue nut / gray subs
butt weld schedule 80

		PART NUMBER	WEIGHT POUNDS	CARTON QUANTITY	PRICE
2"	UNION	260220	6.17	15	226.70
	NUT	260293	3.11		27.80
	MALE SUB WITH O-RING	260224	1.45		108.10
	FEMALE SUB	020222	1.68		132.10
	O-RING	260294			5.50
2 1/2"	UNION	262520	11.77	6	POR
	NUT	262593	6.23		POR
	MALE SUB WITH O-RING	262524	2061		POR
	FEMALE SUB	022522	2.94		POR
	O-RING	262594			POR
3"	UNION	260320	15.35	6	358.50
	NUT	260393	6.69		71.40
	MALE SUB WITH O-RING	260324	4.14		126.10
	FEMALE SUB	020322	4.52		187.70
	O-RING	260394			5.50
4"	UNION	260420	20.59	4	481.20
	NUT	260493	7.29		73.20
	MALE SUB WITH O-RING	260424	6.44		165.40
	FEMALE SUB	020422	6.84		252.90
	O-RING	260494			5.50
6"	UNION	260620	52.93	1	1,156.90
	NUT	260693	18.75		278.40
	MALE SUB WITH O-RING	260624	16.23		497.70
	FEMALE SUB	020622	17.94		651.40
	O-RING	260694			15.90
8"	UNION	260820	77.38	1	1,786.40
	NUT	260893	22.73		291.80
	MALE SUB WITH O-RING	260824	25.11		854.70
	FEMALE SUB	020822	29.48		828.50
	O-RING	260894			21.90
10"	UNION	261020	120.63	1	2,185.90
	NUT	261093	35.29		485.50
	MALE SUB WITH O-RING	261024	43.01		1,034.30
	FEMALE SUB	021022	42.25		1,271.70
	O-RING	261094			26.70

2 1/2 " available - Price on Request



**figure 201 - 8 RND EUE - 3000 psi cwp* - 4500 psi test
union with O-Ring gold nut / gray subs**

		PART NUMBER	WEIGHT POUNDS	CARTON QUANTITY	PRICE
2"	UNION	210250	13.50	5	POR
	NUT	022593	5.50		POR
	MALE SUB	210251	4.00		POR
	FEMALE SUB WITH O-RING	210255	4.00		POR
	O'RING	2102594			POR
2 1/2"	UNION	212550	19.45	5	266.70
	NUT	020393	6.75		71.40
	MALE SUB	212551	6.20		135.50
	FEMALE SUB WITH O-RING	212555	6.50		180.80
	O'RING	130394			6.10

*POR = Price On Request

**figure 211 - 2000 psi cwp* - 3000 psi test
insulated union threaded end gray nut / blue sub**

2"	UNION	110200	6.50	15	134.80
	NUT	110293	3.00		37.00
	MALE SUB	110201	1.50		38.90
	FEMALE SUB W / SEAL RING	110205	2.00		46.10
	REPAIR KITS	110299			38.90
3"	UNION	110300	12.50	6	259.90
	NUT	110393	5.75		100.80
	MALE SUB	110301	3.00		84.50
	FEMALE SUB W / SEAL RING	110305	3.75		108.10
	REPAIR KITS	110399			47.00

*cwp is cold working pressure

figure 207 - 2000 psi cwp* - 3000 psi test
blanking union threaded end blue cap / gray sub

		PART NUMBER	WEIGHT POUNDS	CARTON QUANTITY	PRICE
3"	UNION	270300	10.25	10	139.70
	BLANKING CAP W / O-RING	270397	6.75		107.40
	FEMALE SUB	020302	3.50		59.20
	O-RING	270394			5.50
4"	UNION	270400	16.75	6	186.90
	BLANKING CAP W / O-RING	270497	10.75		127.00
	FEMALE SUB	020402	6.00		101.60
	O-RING	270494			8.50
6"	UNION	270600	43.50	1	472.60
	BLANKING CAP W / O-RING	270697	26.50		264.80
	FEMALE SUB	020602	17.00		363.40
	O-RING	270694			15.20

butt weld schedule 40

3"	UNION	270310	11.00	10	194.30
	BLANKING CAP W / O-RING	270397	6.75		107.40
	FEMALE SUB	020312	4.25		165.90
	O-RING	270394			5.50
4"	UNION	270410	17.00	6	258.70
	BLANKING CAP W / O-RING	270497	10.75		127.00
	FEMALE SUB	020412	6.25		231.10
	O-RING	120594			8.50
6"	UNION	270610	41.50	1	653.10
	BLANKING CAP W / O-RING	270697	26.50		264.80
	FEMALE SUB	020612	15.00		629.60
	O-RING	270694			15.20

butt weld schedule 80

3"	UNION	270320	12.00	10	219.30
	BLANKING CAP W / O-RING	270397	6.75		107.40
	FEMALE SUB	020322	4.60		187.70
	O-RING	270394			5.50
4"	UNION	270420	17.80	6	283.70
	BLANKING CAP W / O-RING	270497	10.75		127.00
	FEMALE SUB	020422	6.90		252.90
	O-RING	270494			8.50
6"	UNION	270620	42.50	1	678.10
	BLANKING CAP W / O-RING	270697	26.50		264.80
	FEMALE SUB	020622	26.10		652.50
	O-RING	270694			15.20

figure 300 - 2000 psi cwp* - 3000 psi test

union with O'Ring threaded ends gray nut / yellow subs

		PART NUMBER	WEIGHT POUNDS	CARTON QUANTITY	PRICE
1"	UNION	030100	6.00	15	43.20
	NUT	030193	1.20		19.00
	MALE SUB	030101	0.40		17.20
	FEMALE SUB WITH O-RING	030105	1.90		22.30
	O-RING	030194			5.50
2"	UNION	030200	6.00	15	47.20
	NUT	030293	2.70		20.20
	MALE SUB	030201	1.40		18.50
	FEMALE SUB WITH O-RING	030205	1.90		23.30
	O-RING	030294			6.10

*cwp is cold working pressure

figure 400 - 4000 psi cwp* - 6000 psi test

threaded ends black nut / red subs

		PART NUMBER	WEIGHT POUNDS	CARTON QUANTITY	PRICE
2"	UNION	040200	10.50	10	107.90
	NUT	040293	4.75		63.40
	MALE SUB	040201	2.75		41.40
	FEMALE SUB	040202	3.00		58.00
3"	UNION	040300	19.75	4	276.90
	NUT	040393	6.75		98.10
	MALE SUB	040301	5.50		105.50
	FEMALE SUB	040302	7.50		131.20
4"	UNION	040400	29.50	3	278.40
	NUT	040493	9.50		131.10
	MALE SUB	040401	9.00		169.50
	FEMALE SUB	040402	11.00		199.00
6"	UNION	040600	74.6	1	2,434.20
	NUT	040693	22.4		643.60
	MALE SUB	040601	24		827.60
	FEMALE SUB	040602	28.2		876.60
*12"	UNION	041200	171.50	1	2,790.00
	NUT	041293	58.50		1,046.50
	MALE SUB WITH O-RING	041204	53.00		1,245.70
	FEMALE SUB	041202	60.00		1,477.60
	O-RING	041294			43.10

*12" FIG 400 - 2,500 psi cwp - 3,750 psi test

5", 8" and 10" Unions are available - P.O.R.

butt weld schedule 80

*12"	UNION	041220	171.50	1	6,476.50
	NUT	041293	58.50		1,046.50
	MALE SUB WITH O-RING	041224	53.00		3,759.40
	FEMALE SUB	041222	60.00		4,460.00
	O-RING	041294			43.10

*12" FIG 400 BW 80 - 2,500 psi cwp - 3,750 psi test



figure 402 - 4000 psi cwp* - 6000 psi test
 union with seal ring threaded ends black nut / black subs

	UNION	420200	10.50	10	144.00
2"	NUT	420293	4.75		61.80
	MALE SUB	420201	2.75		57.90
	FEMALE SUB W/ SEAL RING	420205	3.00		73.20
	SEAL RING	620295			5.60

*cwp is cold working pressure

P.O.R. = Price on Request

figure 600 - 6000 psi cwp* - 9000 psi test
 union w/ bronze seat threaded ends black nut / silver subs

		PART NUMBER	WEIGHT POUNDS	CARTON QUANTITY	PRICE
1"	UNION	060100	3.50	20	157.50
	NUT	060193	1.75		74.10
	MALE SUB	060101	.75		41.20
	FEMALE SUB W/ BRONZE SEAT	060106	1.00		93.70
	BRONZE SEAT INSERT	060196			34.30
1 1/4"	UNION	061200	10.00	10	226.20
	NUT	621593	4.50		93.20
	MALE SUB	061201	2.50		61.90
	FEMALE SUB W/ BRONZE SEAT	061206	3.00		125.60
	BRONZE SEAT INSERT	061596			33.20
1 1/2"	UNION	061500	9.75	10	226.20
	NUT	621593	4.75		93.20
	MALE SUB	061501	2.00		61.90
	FEMALE SUB W/ BRONZE SEAT	061506	3.00		125.60
	BRONZE SEAT INSERT	061596			33.20
2"	UNION	060200	16.00	7	249.00
	NUT	060293	8.00		103.70
	MALE SUB	060201	3.00		68.70
	FEMALE SUB W/ BRONZE SEAT	060206	5.00		139.20
	BRONZE SEAT INSERT	060296			35.60
4"	UNION	060400	40.00	2	556.00
	NUT	060493	14.25		179.50
	MALE SUB	060401	11.00		216.40
	FEMALE SUB W/ BRONZE SEAT	060406	14.75		276.50
	BRONZE SEAT INSERT	060496			82.20

*cwp is cold working pressure



figure 602 - 6000 psi cwp* - 9000 psi test

union w/ seal ring threaded ends black nut / orange subs

		PART NUMBER	WEIGHT POUNDS	CARTON QUANTITY	PRICE
1"	UNION	620100	3.75	20	81.40
	NUT	620193	2.00		42.50
	MALE SUB	620101	.75		24.90
	FEMALE SUB W/ SEAL RING	620105	1.00		37.00
	SEAL RING	620195			4.50
1 1/4"	UNION	621200	10.25	10	171.90
	NUT	621593	4.75		93.20
	MALE SUB	621201	2.50		63.10
	FEMALE SUB W/ SEAL RING	621205	3.00		92.30
	SEAL RING	621595			6.30
1 1/2"	UNION	621500	9.50	10	171.90
	NUT	621593	4.75		93.20
	MALE SUB	621501	2.00		63.10
	FEMALE SUB W/ SEAL RING	621505	2.75		92.30
	SEAL RING	621595			6.30
2"	UNION	620200	12.75	7	159.60
	NUT	620293	7.25		73.20
	MALE SUB	620201	2.50		59.10
	FEMALE SUB W/ SEAL RING	620205	3.00		85.60
	SEAL RING	620295			5.60
3"	UNION	620300	22.00	4	276.80
	NUT	620393	9.75		113.30
	MALE SUB	620301	5.25		105.30
	FEMALE SUB W/ SEAL RING	620305	7.00		135.10
	SEAL RING	620395			8.10
4"	UNION	620400	33.25	2	439.70
	NUT	620493	14.25		156.70
	MALE SUB	620401	8.50		166.30
	FEMALE SUB W/ SEAL RING	620405	10.50		231.30
	SEAL RING	620495			8.80

*cwp is cold working pressure



**figure 602 - 6000 psi cwp* - 9000 psi test
union w/ seal ring
butt weld schedule 80**

		PART NUMBER	WEIGHT POUNDS	CARTON QUANTITY	PRICE
1"	UNION	620120	4.00	20	97.10
	NUT	620193	2.00		42.50
	MALE SUB	620121	.75		37.70
	FEMALE SUB W/ SEAL RING	620125	1.25		57.10
	SEAL RING	620195			4.50
1 1/4"	UNION	621220	10.25	10	207.00
	NUT	621593	4.75		93.20
	MALE SUB	621221	2.50		98.40
	FEMALE SUB W/ SEAL RING	621225	3.00		143.30
	SEAL RING	621595			6.30
1 1/2"	UNION	621520	9.75	10	207.00
	NUT	621593	4.75		93.20
	MALE SUB	621521	2.25		98.40
	FEMALE SUB W/ SEAL RING	621525	2.75		143.30
	SEAL RING	621595			6.30
2"	UNION	620220	13.50	7	221.80
	NUT	620293	7.25		73.20
	MALE SUB	620221	2.75		99.40
	FEMALE SUB W/ SEAL RING	620225	3.50		145.00
	SEAL RING	620295			5.60
3"	UNION	620320	22.00	4	316.30
	NUT	620393	9.75		113.30
	MALE SUB	620321	6.00		131.20
	FEMALE SUB W/ SEAL RING	620325	6.25		172.20
	SEAL RING	620395			8.10
4"	UNION	620420	31.00	2	496.70
	NUT	620493	14.25		156.70
	MALE SUB	620421	7.50		196.90
	FEMALE SUB W/ SEAL RING	620425	9.25		274.20
	SEAL RING	620495			8.80

*cwp is cold working pressure



figure 602 - 6000 psi cwp* - 9000 psi test

union w/ seal ring

butt weld schedule 160 and butt weld xxh

		PART NUMBER AND WEIGHT (LBS.)				CARTON	PRICE
		BW 160		BW XXH		QTY.	
1"	UNION	620130	4.00	620140	4.25	20	210.00
	NUT	620193	1.75	620193	1.75		42.50
	MALE SUB	620131	1.00	620141	1.10		83.90
	FEMALE SUB W/ S.R.	620135	1.25	620145	1.40		122.00
	SEAL RING	620195		620195			4.50
1 1/2"	UNION	621530	9.75	621540	10.00	10	289.50
	NUT	621593	4.60	621593	4.60		93.20
	MALE SUB	621531	2.40	621541	2.50		129.30
	FEMALE SUB W/ S.R.	621535	2.75	621545	2.90		188.90
	SEAL RING	621595		621595			6.30
2"	UNION	620230	13.50	620240	14.00	7	369.10
	NUT	620293	6.50	620293	6.50		73.20
	MALE SUB	620231	3.00	620241	3.25		165.10
	FEMALE SUB W/ S.R.	620235	4.00	620245	4.25		240.50
	SEAL RING	620295		620295			5.60
3"	UNION	620330	23.50	620340	25.00	4	511.10
	NUT	620393	10.00	620393	10.00		113.30
	MALE SUB	620331	6.50	620341	7.20		212.60
	FEMALE SUB W/ S.R.	620335	7.00	620345	7.80		278.60
	SEAL RING	620395		620395			8.10
4"	UNION	620430	34.00	620440	36.25	2	665.90
	NUT	620493	15.00	620493	15.00		156.70
	MALE SUB	620431	9.15	620441	10.25		263.60
	FEMALE SUB W/ S.R.	620435	9.85	620445	11.00		367.30
	SEAL RING	620495		620495			8.80

*cwp is cold working pressure



figure 1002 - 10,000 psi cwp* - 15,000 psi test
union w/ seal ring threaded ends red nut / blue subs

		PART NUMBER	WEIGHT POUNDS	CARTON QUANTITY	PRICE
1"	UNION	120100	3.75	20	138.40
	NUT	120193	2.00		69.20
	MALE SUB	120101	.75		37.70
	FEMALE SUB W/ SEAL RING	120105	1.00		56.50
	SEAL RING	620195			4.50
1 1/2"	UNION	121500	9.16	10	232.20
	NUT	121593	4.63		81.80
	MALE SUB	121501	1.93		65.40
	FEMALE SUB W/ SEAL RING	121505	2.59		163.50
	SEAL RING	621595			8.70
2"	UNION	120200	12.25	7	185.80
	NUT	120293	6.75		83.30
	MALE SUB	120201	2.50		60.10
	FEMALE SUB W/ SEAL RING	120205	3.00		87.70
	SEAL RING	620295			5.60
3"	UNION	120300	22.25	4	315.10
	NUT	120393	10.00		125.00
	MALE SUB	120301	5.25		112.80
	FEMALE SUB W/ SEAL RING	120305	7.00		166.20
	SEAL RING	620395			8.10
4"	UNION	120400	35.00	2	453.00
	NUT	120493	15.00		177.50
	MALE SUB	120401	9.00		185.30
	FEMALE SUB W/ SEAL RING	120405	11.00		244.20
	SEAL RING	620495			8.80
* 5"	UNION	120500	71.75	1	1,651.80
	NUT	120593	26.25		610.50
	MALE SUB W/ O-RING	120504	22.50		676.30
	FEMALE SUB	120502	23.00		891.70
	O-RING	120594			8.80

5" fig 1002 - 5,000 psi cwp - 7,500 psi test

*cwp is cold working pressure

**figure 1002 - 10,000 psi cwp* - 15,000 psi test
union w/ seal ring
butt weld schedule 160 and butt weld xxh**

		PART NUMBER AND WEIGHT (LBS.)				CARTON	PRICE
		BW 160		BW XXH		QTY.	
2"	UNION	120230	13.75	120240	14.25	7	343.60
	NUT	120293	6.75	120293	6.75		83.30
	MALE SUB	120231	3.25	120241	3.50		136.60
	FEMALE SUB W/ S.R.	120235	3.75	120245	4.00		198.50
	SEAL RING	620295		620295			5.60
3"	UNION	120330	23.50	120340	24.50	4	403.60
	NUT	120393	10.00	120393	10.00		125.00
	MALE SUB	120331	6.75	120341	7.50		156.00
	FEMALE SUB W/ S.R.	120335	6.75	120345	7.00		235.00
	SEAL RING	620395		620395			8.10
4"	UNION	120430	33.00	120440	34.50	2	601.60
	NUT	120493	15.00	120493	15.00		177.50
	MALE SUB	120431	9.00	120441	10.00		272.90
	FEMALE SUB W/ S.R.	120435	9.00	120445	9.50		352.90
	SEAL RING	620495		620495			8.80
*5"	UNION	120530	55.75	120540	57.75	1	1,346.20
	NUT	120593	26.25	120593	26.25		610.50
	MALE SUB W/ O-RING	120534	14.50	120544	15.75		451.70
	FEMALE SUB	120532	15.00	120542	15.75		484.30
	O-RING	120594		120594			8.80
*6"	UNION	120630	95.00	120640	98.00	1	1,554.00
	NUT	120693	42.75	120693	42.75		746.00
	MALE SUB W/ O-RING	120634	20.50	120644	22.00		502.10
	FEMALE SUB	120632	31.75	120642	33.25		526.40
	O-RING	120694		120694			19.40

*5" and *6" fig 1002 - 7,500 psi cwp* - 11,250 psi test

combination ends

		WEIGHT		QTY.	
*5" x 4"	UNION 4" NPT BOTH ENDS	125400	63.60	1	1,571.00
	MALE SUB	125401	17.25		652.60
	FEMALE 4" SC	125402	18.50		691.50
	NUT	120593	26.25		610.50

		BW 160		BW XXH		QTY.	
*5" x 4"	UNION 5" 160 or XXH x 4" SC	125450	59.90	125440	1	1,523.80	
	MALE 5" BW 160 / XXH W/ O-RING	120534	14.50/15.75	120544		447.30	
	FEMALE 4" SC	125402	18.50	125402		691.50	
	NUT	120593	26.25	120593		610.50	
*4" x 5"	UNION 4" SC x 5" 160 or XXH	124560	59.40	124540	1	1,523.80	
	MALE 4" SC W/ O-RING	125401	17.75	125401		652.60	
	FEMALE 5" BW 160 / XXH	120532	15.00/15.75	120542		479.60	
	NUT	120593	26.25	120593		610.50	

combination ends - 7,500 psi cwp - 11,250 psi test

*cwp is cold working pressure



figure 1003

3" - 10,000 psi cwp* - 15,000 psi test

4", 5", 6" - 7,500 cwp* - 11,250 psi test

misaligning union w/ o'ring threaded ends black nut / green subs

		PART NUMBER	WEIGHT POUNDS	CARTON QUANTITY	PRICE
3"	UNION	130300	44.50	2	725.20
	NUT	130393	22.00		348.10
	MALE SUB W/ O-RING	130304	13.50		293.80
	FEMALE SUB	130302	9.00		266.30
	O'RING	130394			6.10
4"	UNION	130400	76.75	1	867.40
	NUT	130493	37.50		684.70
	MALE SUB W/ O-RING	130404	23.00		356.90
	FEMALE SUB	130402	16.25		324.20
	O'RING	130494			7.30

butt weld schedule 160 / butt weld xxh

		PART NUMBER AND WEIGHT (LBS.)				PRICE
		BW 160		BW XXH		
		PART NUMBER	WEIGHT	PART NUMBER	WEIGHT	
3"	UNION	130330	44.50	130340	44.50	834.20
	NUT	130393	22.00	130393	22.00	348.10
	MALE SUB W/ O.R.	130334	13.50	130344	13.50	365.90
	FEMALE SUB	130332	9.00	130342	9.00	328.00
	O'RING	130394		130394		6.10
4"	UNION	130430	76.75	130440	76.75	1,066.00
	NUT	130493	37.50	130493	37.50	684.70
	MALE SUB W/ O.R.	130434	22.75	130444	22.75	455.00
	FEMALE SUB	130432	16.50	130442	16.50	413.20
	O'RING	130494		130494		7.30
5"	UNION	130530	77.75	130540	79.00	1,839.60
	NUT	130593	37.75	130593	38.25	684.70
	MALE SUB W/ O.R.	130534	22.25	130544	22.75	753.40
	FEMALE SUB	130532	17.75	130542	18.00	651.10
	O'RING	130494		130494		7.30
6"	UNION	130630	183.00	130640	185.00	3,310.20
	NUT	130693	105	130693	105	1,716.40
	MALE SUB W/ O.R.	130634	48	130644	49	1,501.90
	FEMALE SUB	130632	30	130642	31	1,348.70
	O'RING	130694		130694		7.30

*cwp is cold working pressure



figure 1502 - 15,000 psi cwp* - 22,500 psi test
union w/ seal ring threaded ends blue nut / red subs

		PART NUMBER	WEIGHT POUNDS	CARTON QUANTITY	PRICE
1"	UNION	150100	8.80	9	207.60
	NUT	150193	4.65		116.50
	MALE SUB	150101	1.90		105.00
	FEMALE SUB W/ SEAL RING	150105	2.25		131.70
	SEAL RING	620195			4.50
1 1/2"	UNION	151500	17.30	5	460.90
	NUT	151593	9.30		188.20
	MALE SUB	151501	3.75		146.30
	FEMALE SUB W/ SEAL RING	151505	4.25		234.50
	SEAL RING	621595			6.30
2"	UNION	150200	20.25	5	204.90
	NUT	150293	10.25		78.30
	MALE SUB	150201	5.00		77.60
	FEMALE SUB W/ SEAL RING	150205	5.00		104.10
	SEAL RING	620295			5.60
3"	UNION	150300	30.25	4	494.00
	NUT	150393	14.25		187.60
	MALE SUB	150301	7.75		175.20
	FEMALE SUB W/ SEAL RING	150305	8.25		269.90
	SEAL RING	620395			8.10

figure 1502 - 15,000 psi cwp* - 22,500 psi test
non-pressure seal union w/ seal ring
blue nut / light red subs

4"	UNION	150470	68.9	2	POR
	NUT	150493	15.00		POR
	MALE SUB	150471	8.25		POR
	FEMALE SUB W/ SEAL RING	150475	10.00		POR
	SEAL RING	150495			POR

*cwp is cold working pressure

* POR = Price On Request



**figure 1502 - 15,000 psi cwp* - 22,500 psi test
union w/ seal ring**

butt weld schedule 160 and butt weld xxh

		PART NUMBER AND WEIGHT (LBS.)				CARTON QTY.	PRICE
		BW 160		BW XXH			
1"	UNION	150130	8.35	150140	8.60	9	543.40
	NUT	150193	4.65	150193	4.65		116.50
	MALE SUB	150131	1.70	150141	1.80		232.00
	FEMALE SUB W/ S.R.	150135	2.00	150145	2.15		232.00
	SEAL RING	620195		620195			4.50
1 1/2"	UNION	151530	16.85	151540	17.30	5	491.00
	NUT	151593	9.30	151593	9.30		188.20
	MALE SUB	151531	3.55	151541	3.75		186.40
	FEMALE SUB W/ S.R.	151535	4.00	151545	4.25		266.50
	SEAL RING	621595		621595			6.30
2"	UNION	150230	19.50	150240	20.25	5	289.60
	NUT	150293	9.00	150293	9.00		78.30
	MALE SUB	150231	5.00	150241	5.50		128.10
	FEMALE SUB W/ S.R.	150235	5.50	150245	5.75		170.80
	SEAL RING	620295		620295			5.60
3"	UNION	150330	27.75	150340	28.75	4	564.00
	NUT	150393	13.50	150393	13.50		187.60
	MALE SUB	150331	7.25	150341	7.75		211.50
	FEMALE SUB W/ S.R.	150335	7.00	150345	7.50		323.60
	SEAL RING	620395		620395			8.10
4"	UNION	150430	80.75	150440	83.75	1	1,932.10
	MALE SUB	150431	22.90	150441	24.50		1,025.50
	FEMALE SUB W/ S.R.	150435	19.85	150445	21.25		1,400.10
	NUT COMPLETE	150494	38.00	150494	38.00		1,065.80
	SEAL RING	150495		150495			78.20
	RETAINING RING	150496		150496			38.70
	SEGMENT RING	150497		150497	3.00		351.20
5"	UNION	N/A		150540	95.25	1	3,331.00
	NUT			150593	46.00		1,598.70
	MALE SUB			150541	25.00		1,065.50
	FEMALE SUB W/ S.R.			150545	24.25		1,463.20
	SEAL RING			150495			78.20

*cwp is cold working pressure

figure 2002 - 20,000 psi cwp* - 30,000 psi test
butt weld green nut / gray subs

		PART NUMBER	WEIGHT POUNDS	CARTON QUANTITY	PRICE
2"	UNION	202290	21.65	4	614.90
	NUT COMPLETE	202293	12.40		278.40
	MALE SUB	202291	4.00		310.20
	FEMALE SUB W/ SEAL RING	202295	5.25		421.70
	SEAL RING	202296			116.30
	RETAINING RING	999000			9.80
	SEGMENTED RING	999001			183.90

figure "G" - 6000 psi cwp* - 9000 psi test
union w/ seal ring threaded ends yellow nut / silver subs

1 1/2"	UNION	G61500	7.00	10	150.90
	NUT	G61593	3.25		84.00
	MALE SUB	G61501	1.50		68.00
	FEMALE SUB WITH SEAL RING	G61505	2.25		98.10
	SEAL RING	G61595			8.80
2"	UNION	G60200	11.25	7	172.20
	NUT	G60293	4.50		95.70
	MALE SUB	G60201	2.75		77.30
	FEMALE SUB WITH SEAL RING	G60205	4.00		122.00
	SEAL RING	G60295			11.90

viton seals rings for H2S service
(highly saturated nitrile seal rings available upon request)

			PRICE
1"	SEAL RING	V620195	35.60
1 1/2"	SEAL RING	V621595	70.00
2"	SEAL RING	V620295	70.00
3"	SEAL RING	V620395	109.40
4"	SEAL RING	V620495	141.90

viton o'rings

5"	O-RING	V120594	156.60
6"	O-RING	V120694	162.60

*cwp is cold working pressure

- **Hammer Unions Prepped for Sour Gas Service**
- **Hammer Unions Prepped for Low Temperature Service**

consult sales office or factory for price and delivery

Unions are available prepared for Sour Gas Service as per the material requirements of National Association of Corrosion Engineers (N.A.C.E.) Standard MR-01-75. Union Figure Numbers 200, 206, 400, 602, 1002 (rated 7,500 psi CWP – 5” & 6” 5,000 psi CWP), 1003 (4” and 5” rated 5,000 psi CWP), and 1502 (rated 10,000 psi CWP). Sour service unions are supplied with “Viton” fluoroelastomer seals where applicable. Highly Saturated Nitrile seal rings and o-rings are also available.

Also, select union Figure Numbers and sizes are available prepared for Low Temperature service conditions with special material properties that demonstrate elevated ductility at cold temperatures. (See “Cautions and Warnings” page for precautions regarding hammer unions use in severe conditions.)

Please consult sales offices or the factory for availability, pricing and delivery.

• **Oilfield Union and Union Component Specials**

consult factory for price and availability

Integral Hammer Union Swages	Integral Crossovers	Solid (Blanking) Subs
Gage Subs for Autoclave™	Union Integral Hose Nipple Ends	Union Integral Flanges

Union specials are available, with many types, sizes and Figure Numbers in stock at factory and warehouse locations. Many are listed in our Flow Line Products pricing sheets. Please refer to that listing, or consult sales offices or the factory for availability, pricing and delivery.

CAUTIONS AND WARNINGS

OILFIELD HAMMER UNIONS AND FLOW CONTROL PRODUCTS THAT HAVE HAMMER UNION END CONNECTIONS

Working with or around any pressure containing pipe component or vessel requires informed common sense and heightened safety. Where circumstances of severe service, extremes of temperature, or high pressure are encountered, all personnel must use suitable protective equipment and follow all safety procedures and policies. Complete and proper make-up of union components and end connections is required to attain rated working pressure. Installers of these products are responsible for their safe installation and use. *Failure to observe these precautions regarding Kemper hammer lug unions could result in property damage, personal injury or death.*

- When making or breaking hammer lug unions, personnel must always wear safety glasses and appropriate protective equipment.
- When making up hammer lug unions, personnel must not use excessive hammering force.
- When unions are pressurized, personnel must not hammer, strike or impact unions in any way.
- When pressurized, union / piping systems must not exceed the rated working pressure of the union or pipe.
- When ambient temperatures are below freezing, personnel must practice extra care making or breaking union connections. Low temperatures lessen the ductility and impact strength of iron and steel.
- When using Kemper unions prepped for sour gas service and exposed to sour fluids, personnel should never interchange standard service union components. Kemper sour gas service hammer union components are marked "SG" or "Sour Gas".
- When prepped for sour gas service, Kemper hammer unions use fluoroelastomer or optional highly-saturated nitrile elastomer seal materials. However, Kemper can not guaranty the performance of any elastomer in sour gas service.
- When installing union / piping systems in overhead applications, appropriate piping supports and methods must be employed with sufficient factors of safety to bear the combined weight of piping and contained fluids.
- When disassembling union connections, personnel must assure that piping systems are completely de-pressurized, and that residual fluids are properly purged with any subsequent leakage isolated and cleaned. Residual fluids should be treated as hazardous waste.
- When making up pipe end union assemblies, personnel should never interchange Kemper components of different Figure Numbers or pressure ratings.
 - Never connect products or piping with hammer union ends unless those end connections can be positively identified to be identical union size, figure number and pressure rating.
 - Never assemble any combination of hammer union components, including hammer lug nut, segmented rings, male, and female unless the union size, figure number and pressure rating are identical.
- Products must be removed from service and disposed of when positive identification of product or component size, figure number or pressure rating cannot be made certain due to deterioration of markings or any other damage.
- Should any leakage be evident during use of hammer union end products, these products should be immediately removed from service, inspected for renewal, or otherwise permanently disposed of.
- When making up pipe end union assemblies, personnel must not interchange Kemper components with non-Kemper union components. Substitution of non-Kemper manufactured components voids all stated union assembly pressure ratings.

Safety of personnel and the protection of property should never be compromised by uncertainty. Please call immediately with any questions regarding the proper installation, use, renewal and disposition of Kemper hammer union and flow line products at any of the following locations: Kemper Valve & Fittings Corp. – 3001 Darrell Road, Island Lake, IL 60042 ph: 847-526-2166 – Kemper Valve & Fittings, Sales Office, 5650 Guhn, Houston, TX 77040 ph: 713-462-1665 – Kemper Flow Line Division, 2733 Industrial Drive, Sulphur, OK 73086 ph: 580-622-2048

SAFETY WARNING AND TECHNICAL ADVISORY

Hammer Union Components, not Positively Identified, can lead to Connection Mismatches and potential Failure after Pressurization !!!

This warning is applicable to products from any manufacturer of hammer unions or hammer union fittings based on the original FMC Weco standard of configuration (Figure Numbers)

Kemper Valve and many other oilfield fluid control product manufacturers, produce high pressure quick connect pipe fittings, commonly referred to as Hammer Unions.

Hammer Unions join piping sections or other specialty fittings, by hammering the lugs of the Nut component, bringing the ball seat of the Male component into pressure tight contact with the concave seat of the Female component. The Female has external Acme threads matched to the internal threads of the of the Hammer Lug Nut.

Certain union components for the same nominal pipe size but with different Figure Numbers, such as the 2" Figure 1502 and Figure 602, when not positively identified, may appear to properly make-up. The extreme sloppiness of the thread fit between a 2" 1502 Hammer Lug Nut and a 2" 602

Illustration 1 – Properly Made Acme Thread

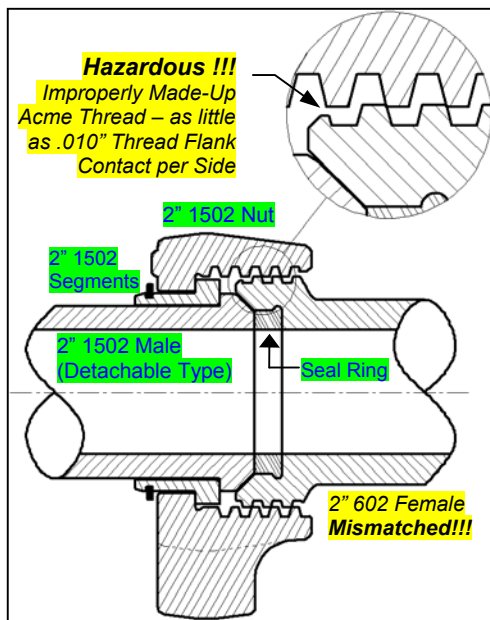
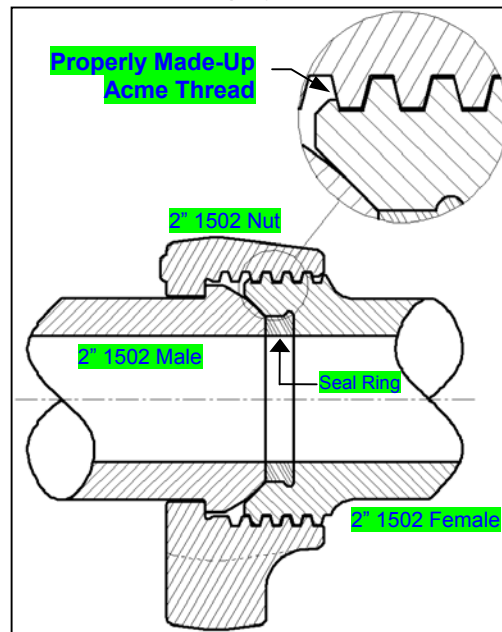


Illustration 2 – Mismatched Acme Thread

Female could be ignored, and when hammered together, this mismatched connection might actually hold pressure for a minimal time. The graphics on this page show the proper make-up of the Acme threaded components (*Illustration 1*) as opposed to the hazardous mismatch that can result from the failure to positively identify the union size, Figure Number, and pressure rating (*Illustration 2*).

This illustrated instance is one example of how, by failure to positively identify hammer union components, **the mismatch of these components will result in an unsafe connection, might fail after pressurization, causing property damage and severe injury or death of personnel.** The following "Cautions and Warnings" page includes references to other hammer union installation and usage conditions that could result in potentially hazardous connections.

Order terms and conditions:

- 1) Payments are to be made in U.S. Funds in the United States unless otherwise specified. Seller reserves the right to place a service or interest charge on past due accounts at the highest rate permitted by the law of the state to which the product is shipped.
- 2) Seller warrants products of its manufacture for a period of one (1) year from date of shipment, to the extend that Seller will at its option repair or replace, FOB point of manufacture, any such products if by reason of faulty material or workmanship they prove defective under normal use and service, provided, however, that Seller does not in any manner whatsoever warrant seals or packing materials in equipment handling special or corrosive fluids or operating at unusual temperatures or pressure. Except to the extend of the descriptions contained in Seller's Quotation or Order Acknowledgment. Seller makes no warranty or merchantability or fitness for a particular purpose, nor any other warranty, expressed or implied.
- 3) If in Seller's opinion repair or replacement will not remedy a claimed product deficiency, or if a product of Seller's Manufacture does not comply with the description or specification set forth on Seller's Order Acknowledgment, Seller's liability shall be limited to repayment of any amounts paid on the purchase price, cancellation of order and acceptance of the product FOB point of manufacture. However, if the product has been in use for a period in excess of 30 days, Seller reserves the right to make a reasonable depreciation charge for such use. All claims for shortages must be made within 30 days after shipment.
- 4) Seller does not guarantee any products not of Seller's manufacture or special plating, coatings, or heat treatment applied to Seller's product.
- 5) Seller recommends against and will not assume any responsibility for rebuilding, repairing, special plating, coating, welding, or heat treating done outside Seller's plant by or at the request of the Buyer.
- 6) The Seller shall not in any event be liable for consequential damages arising out of or in connection with this order of the installation, use, operation, repair, replacement or service of any products furnished, including without limitation breach of any obligation imposed on the Seller under or in connection with this order consequential damages for purposes of this order shall include without limitation loss of use, income or profit, or losses sustained as the result of injury (including death) to any person, or loss of or damage property (including without limitation property handled or processed by the use of the product).
- 7) Seller shall not be liable to Buyer for any loss or damage suffered by the Buyer, directly or indirectly, as a result of Seller's failure to perform, or delay in performing, any obligation under this order, where such failure or delay is caused by fires, floods, labor troubles (including, without limitation, strikes, slow downs and lockouts), war, civil disturbances, Government regulations, inability to obtain or revocation of export or import licenses, inability to obtain goods or services from our suppliers, interruptions of or delay in transportation, material shortages, power failures, accidents, acts of God, or other causes of like or different character beyond Seller's control.
- 8) All published dimensions, weights, temperature and pressure ratings are approximate; if critical consult factory.
- 9) The risk of loss or destruction of, or damages to, the product shall be on the Buyer from and after delivery of the product to the Buyer or carrier, whichever first occurs.
- 10) Buyer shall pay the amount of any sales, use, compensating, intangibles, gross income or like tax, import duties, export duties, and similar charges levied by any government authority in connection with this order, but not including taxes payable on Seller's net income.
- 11) Buyer's order will be subject to cancellation only upon payment to Seller of reasonable cancellation charges, which shall take into account expenses already incurred, commitments made by Seller, and Seller's anticipated profit. Products incorporating variations from catalog items or specifications are considered special and are subject to cancellation only with Seller's concurrence. Items delivered as ordered may be returned unused for credit only upon Seller's acceptance, and such accepted returns are subject to a restocking charge. No item will be accepted for credit after one year from date of purchase.
- 12) Title to the products supplies under this order, and to any and all additions and accessories thereto and substitutions therefore, shall remain in Seller as a security interest until Buyer has completed payment of the purchase price, plus accrued interest if any.

ILLINOIS MANUFACTURING & ENGINEERING

P.O. BOX 400
WAUCONDA, ILLINOIS 60084
Phone: 847-526-2166
Toll Free: 800-323-1659
Fax: 847-526-2241

**TEXAS SALES:
DISTRIBUTION & FLOWLINE**

5650 GUHN ROAD, SUITE 110
HOUSTON, TEXAS 77040
Phone: 713-462-1665
Toll Free: 800-231-2724
Fax 713-462-1626

**OKLAHOMA SALES:
FLOWLINE & RECERTIFICATION**

2733 INDUSTRIAL DR.
SULPHUR, OK. 73086
Phone: 580-622-2048
Toll Free 888-533-FRAC
Fax: 580-622-2058

**COLORADO SALES:
DISTRIBUTION & FLOWLINE**

1423 4TH AVE.
GRAND JUNCTION, CO 81501
Phone: 970-609-5845
Fax: 970-609-5839

**CANADIAN SALES:
DISTRIBUTION & FLOWLINE**

8001 EDGAR INDUSTRIAL AVE.
RED DEER, ALBERTA T4P 3S2
Phone: 403-348-0872
Fax: 403-348-0873

**WEST TEXAS SALES:
DISTRIBUTION & FLOWLINE**

Phone: 915-563-1041
Fax: 915-563-1042

**UTAH SALES:
DISTRIBUTION & FLOWLINE**

Phone: 435-781-8258
Fax: 435-781-3037

REVISION NOTES:

- REV. A: FIRST RELEASE
- REV. B: MODIFIED AND SUPERSEDED U-0304 DATED 4/17/2004
- REV. C: REMOVED 602 - 1002 - 1502 (EXCEPT 4") NPS UNIONS, MODIFIED PRICING STRUCTURE, MAJOR RELEASE 9-20-2004
- REV. D: MODIFIED AND SUPERSEDED U-0904 DATED 11/3/2006
- REV. E: MODIFIED PRICING, ADDED 1 1/2" 1002
- REV. F: MODIFIED PRICING, COMMODITY ADJ
- REV. G: ADJUST WEIGHT
- REV. H: ADDED BUTT WELD SCHEDULE 80 - FIGURE 200 / 206 (PAGE 4 & PAGE 7)
- REV. I: SUPERCEDES U-0708, CHANGED (2" FIGURE 201 / 4" FIGURE 1502) PRICE TO POR, ADDED 1" 300, MODIFIED BACKPAGE
- REV. J: MATCH PRICE - FIGURE 206 O-RING (SCHEDULE 40 / 80)
- REV. K: MATCH PRICE - FIGURE 200 NUT (SCHEDULE 40 / 80)
- REV. L: MATCH PRICE - FIGURE 206 NUT (SCHEDULE 40 / 80)
- REV. M: ADDED BUTT WELD SCHEDULE 80 - FIGURE 207 (PAGE9)
- REV. N: CHANGED PRICE TO POR - 2 1/2 FIGURE 200 SCHEDULE 40/80 (PAGE3/4)
- REV. O: CHANGED PRICE TO POR - 2 1/2 FIGURE 206 SCHEDULE 40/80 (PAGE6/7), CORRECTED PART NUMBERS
- REV. P: CORRECTED PRICE - 260393 3" FIG 206
- REV. Q: CORRECTED PRICE -4" Fig 206 Threaded / BW Sch 40 / BW Sch 80.