

the **edge**

i-TVA

the best in
IP video surveillance
just keeps getting **better**



Panasonic System Solutions Company



it's what's *on* your network that counts

Panasonic i-Pro intelligent and professional IP video surveillance solutions make your network better. Our newest i-Pro products combine Panasonic performance and quality with the latest advancements in IP technology. Like new megapixel cameras featuring our innovative Super Dynamic imaging technology with 128x dynamic range for exceptional images in virtually any lighting condition and streaming of H.264, MPEG-4 and JPEG compression formats. Plus unique features like Adaptive Black Stretch technology to make dark areas more visible and face detection technology for better identification of subjects. And a new i-Pro management server that provides flexibility and scalability for a range of video networking needs, including creation of a global system with universal cross-network access to video.

**With Panasonic i-Pro,
the best in IP video surveillance just keeps getting better.**

Super Dynamic III Weather Proof Day/Night Dome Network Camera

WV-NW964

- Super Dynamic III (SDIII) technology delivers 128x wider dynamic range and Intelligent Technology features for exceptional images in virtually any lighting condition
- Progressive output for smooth images of moving objects and superb color reproduction
- 360° endless panning (0.065°/s – 400°/s)
- 0.5 lux min. illumination color, 0.04 lux B/W
- Auto tracking, Auto Image Stabilization
- Digital slip ring ensures picture quality since no DA/AD conversion
- Dual MPEG-4/JPEG streaming
- 30x optical zoom, 10x electronic (300x total)
- SD memory card slot for manual, alarm or network failure recording
- "Drag and Zoom" operation enabling finer PTZ control



Super Dynamic III Day/Night Dome Network Camera

WV-NS954

- Super Dynamic III (SDIII) technology delivers 128x wider dynamic range and Intelligent Technology features for exceptional images in virtually any lighting condition
- Progressive output for smooth images of moving objects and superb color reproduction
- 360° endless panning (0.065°/s – 400°/s)
- 0.5 lux minimum illumination color, 0.04 lux B/W
- 30x optical zoom, 10x electronic (300x total)
- SD memory card slot for manual, alarm or network failure recording
- Dual MPEG-4 and JPEG streaming
- Auto tracking, Auto Image Stabilization
- Digital slip ring ensures picture quality since no DA/AD conversion
- Auto Image Stabilization for applications where vibration or wind is a concern
- Full duplex 2-way audio



Super Dynamic III Day/Night Dome Network Camera

WV-NS202A

- Super Dynamic III (SDIII) technology delivers 128x wider dynamic range and Intelligent Technology features for exceptional images in virtually any lighting condition
- Progressive output for smooth images of moving objects and superb color reproduction
- 22x optical zoom for accurate capture of objects from long distances
- PoE for cost-efficient cabling and easy installation
- 0.7 lux min. illumination color, 0.5 lux B/W
- "Drag and Zoom" operation enabling finer PTZ control
- SD memory card slot for manual, alarm or network failure recording
- One-touch fitting mechanism for easy installation
- 360° map shot: 8 thumbnail images at 45° intervals
- 2-way audio



Super Dynamic Megapixel Vandal-Resistant Fixed Dome Network Camera

WV-NW502S

- Multiple H.264 high profile streams and JPEG streams ensure simultaneous real time monitoring and high resolution recording
- Up to 30 fps full frame transmission at 1,280 x 960 image size (1.3 Megapixel mode)
- Super Dynamic and Adaptive Black Stretch (ABS) technologies deliver 128x wider dynamic range for exceptional images in virtually any lighting condition
- High sensitivity with Day/Night function: 1.0 lux (Color), 0.08 lux (B/W) at F1.4 (1.3 Megapixel mode)
- Auto Back Focus (ABF) ensures easy installation and stable focus in both color and B/W modes
- Progressive scan ensures clear images with less motion blur and no tearing even when the subject is moving
- Face detection technology detects the position of human face and sends information by XML or video stream
- Dehumidification device for use in various weather conditions



NEW!

SDIII
Super Dynamic



22x
OPTICAL ZOOM

MPEG-4 JPEG

PoE **SD**

MPEG-4 JPEG

PoE

READY TO GO

IP66
standard

SD

i-TVA
MEGA Super Dynamic



MEGA
Pixel

H.264

Super Dynamic III Vandal-Resistant Day/Night Fixed Dome Network Camera

WV-NW484S

- Super Dynamic III (SDIII) technology delivers 128x wider dynamic range and Intelligent Technology features for exceptional images in virtually any lighting condition
- Progressive output for smooth images of moving objects and superb color reproduction
- Vandal Auto Back Focus automatically adjusts camera focus when switching from color to B/W
- PoE for cost-efficient cabling and easy installation
- High sensitivity: 0.6 lux color, 0.08 lux B/W (w/clear dome)
- SD memory card slot for manual, alarm or network failure recording
- Dehumidification device for use in various weather conditions
- Optional heater maintains operating temperature -22° F ~ 122° F (model: WV-CW4H)



Ruggedized Megapixel Day/Night Fixed Dome Network Camera

WV-NF302

- 1,280 x 960 megapixel high quality image for superior identification
- MPEG-4/JPEG digital signal output at VGA with up to 30 ips
- Progressive output for smooth images of moving objects and superb color reproduction
- PoE for cost-efficient cabling and easy installation
- Adaptive Black Stretch enhances visibility of dark areas
- Focus assist function achieves best focus position on screen
- Alarm-activated dynamic compression for better identification and bandwidth optimization
- SD memory card slot for manual, alarm or network failure recording
- Heavy duty metal body
- IPv4/IPv6 protocol supported



Color Fixed Mini Dome Network Camera

WV-NF284

- Dual MPEG-4 and JPEG selectable output for simultaneous monitoring and recording of images
- Progressive output for smooth images of moving objects and superb color reproduction
- PoE for cost-efficient cabling and easy installation
- 30 fps - VGA in MPEG-4/JPEG mode
- Video Motion Detection transmits an alarm signal when moving objects enter monitored area
- SD memory card slot for manual, alarm or network failure recording
- Built-in microphone (G.726)
- 2.8 ~ 10mm, 3.6x vari-focal Auto Iris lens
- Monitor output for easier installation
- Alarm e-mail notification
- Electronic sensitivity enhancement



Super Dynamic Megapixel Network Camera*

WV-NP502

- Multiple H.264 high profile streams and JPEG streams ensure simultaneous real time monitoring and high resolution recording
- Up to 30 fps full frame transmission at 1,280 x 960 image size (1.3 Megapixel mode)
- Super Dynamic and Adaptive Black Stretch (ABS) technologies deliver 128x wider dynamic range for exceptional images in virtually any lighting condition
- Up to 3 Megapixel (2,048 x 1,536) JPEG stream (3 Megapixel mode, JPEG only)
- High sensitivity with Day/Night function: 1.0 lux (Color), 0.08 lux (B/W) at F1.4 (1.3 Megapixel mode)
- Auto Back Focus (ABF) ensures easy installation and stable focus in both color and B/W modes
- Face detection technology detects the position of human face and sends information by XML or video stream
- SD/SDHC memory card slot for manual recording, alarm recording and backup upon network failure



* lens optional



Megapixel Day/Night Network Camera WV-NP304*



- 1,280 x 960 megapixel high quality image for superior identification
- MPEG-4/JPEG digital signal output at VGA with up to 30 ips
- Progressive output for smooth images of moving objects and superb color reproduction
- PoE for cost-efficient cabling and easy installation
- Adaptive Black Stretch enhances visibility of dark areas
- Focus assist function achieves best focus position on screen
- Alarm-activated dynamic compression for better identification and bandwidth optimization
- SD memory card slot for manual, alarm or network failure recording
- Priority stream control
- Full duplex bi-directional audio
- IPv4/IPv6 protocol supported
- Privacy zone can mask up to 8 areas

* lens optional

Megapixel Day/Night Color Network Camera WV-NP1004*



- Progressive output provides clear images
- Dual MPEG-4/JPEG selectable output
- Day/night switching for 24-hour surveillance
- SD memory card slot for manual, alarm or network failure recording
- Auto Back Focus for perfect focus in color or B/W mode

* lens optional



Color Network Camera WV-NP244*



- Dual MPEG-4/JPEG selectable output
- 30 fps – VGA in MPEG-4 or JPEG mode
- Power over Ethernet: IEEE 802.3af
- 1/3" Progressive scan CCD
- Video Motion Detection
- SD memory card slot for manual, alarm or network failure recording

* lens optional



i-Pro solutions that give you the edge

High Definition recording performance

NVRs with on-board camera control functions

customizable and expandable NVR solutions

versatile IP management and monitoring software

encoders with advanced built-in video analytics

HD decoders for optimum image quality

management server solutions that accommodate 1,024 IP devices

Network Video Recorder (NVR) WJ-ND400

- MPEG-4/JPEG multi-format recording
- Up to 64 network cameras can be connected and recorded simultaneously
- Up to 9 hot-plug hard disk drives can be installed in main unit
- 8 recording programs and up to 6x schedule per day
- No camera license fees for cost-effective camera design and expansion
- Browser interface can be used to view content; no extra software required
- High reliability through embedded Real-Time OS
- Automatically transfer SD memory card stored images from Panasonic i-Pro cameras
- Base unit capacity: 1TB; expandable to 54TB
- Alteration detection and recorded data encryption for data security
- Audio can be recorded and played back



Network Video Recorder (NVR) WJ-ND300A

- Up to 32 network cameras can be connected and recorded
- High throughput speed
- Accepts JPEG, MPEG-4 & analog cameras (w/encoder)
- MPEG-4 rate control recording - full rate "I" frame recording only for efficient recording and viewing
- Data stream control: live/recording
- Base unit capacity 1TB; expandable to 28TB
- Live viewing and PTZ camera control
- Download picture to a PC
- Accepts other camera manufacturer's input
- RAID5 capability with optional WJ-NDB301 board
- Various display modes: spot, quad (8 patterns), spot and quad sequence
- Filtered search: time & date, event type, camera number and text
- Disk partitioning for flexible record management: normal, event, copy



Network Video Recorder (NVR) WJ-ND200



- MPEG-4 and JPEG multi-format recording
- Up to 16 network cameras can be connected and recorded
- Various recording modes: manual, schedule, event (pre/post), emergency, external timer
- Up to 2 removable 320GB hard disk drives for easy archiving and management
- Audio recording and playback
- High reliability through embedded Real-Time OS
- SD memory card slot for manual, alarm, or network failure recording
- Alarm notification via e-mail
- Recorded images can be downloaded to a PC with optional WJ-HDC20 hard disk drive cradle
- RAID1 mirroring capability
- Up to 4 clients can monitor and control the NVR simultaneously



Management Software Solution for Panasonic NVR's, DVR's and i-Pro Cameras

WV-ASM100



- Up to 100 recorders, 64 encoders and 256 directly connected cameras can be registered, and up to 6,400 cameras registered in the recorders
- Multi-monitor option enables simultaneous use of Operation, Live and Map Displays each on a dedicated monitor
- For flexible design, live images can be received directly from the camera/encoder or via the recorder
- A camera, group or sequence can be called up on the Operation display with the optional WV-CU950 controller
- Image resolution dynamically changes depending on the screen mode
- Alarm pop-up notification/messaging
- Up to 64 camera icons can be freely positioned on a map with alarm status
- Download video clips for archiving



Management Software Solution for Panasonic NVR's, DVR's and i-Pro Cameras - Light Version

WV-ASM100L

- Up to 100 recorders, 64 encoders and 256 directly connected cameras can be registered, and up to 6,400 cameras registered in the recorders
- For flexible design, live images can be received directly from the camera encoder or via the recorder
- Up to 400 camera groups: cameras and multi-screen mode for the Operation Display can be programmed and called up by manual or sequence operation
- Image resolution dynamically changes depending on the screen mode
- Alarm pop-up notification/messaging
- Download video clips for archiving
- Up to 64 camera icons can be freely positioned on a map with alarm status



Monitoring Software for Panasonic NVR's, DVR's and i-Pro Cameras

WV-ASM10

- Multi-screen software decoder designed for control rooms: up to 16 split live displays including pre-programmed selection of network cameras
- Up to 16 recorders and 256 network cameras can be registered
- MPEG-4 and JPEG formats
- Live display and sequence play by 1/4/6/9/16 screen
- Open interface for external control
- Supports i-Pro cameras, recorders, encoders
- Up to 400 camera groups (pre-programmed camera selection and multi-screen set-up)
- Camera title display – 16 characters



Multi-Channel High Definition Video Decoder

WJ-GXD400

- HDMI video interface
- 1 x 4 VGA (1,280 x 960) images with 2x VGA images in 3 split screens or 6x VGA (640 x 480) images in 6 split screens
- Supports tour and group sequence
- Single channel audio decoding
- Browser GUI
- VGA image displayed at 30ips/sec
- MPEG-4 live performance
- Registers up to 256 cameras
- Supports multicast/unicast for efficient network usage
- High-speed network interface
- High reliability through embedded Real-Time OS

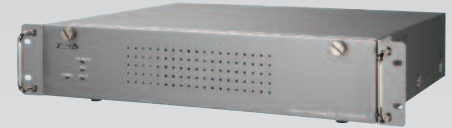


System Management Server

NEW!

WJ-MPU955A

- Linux based system management server
- 2,048 x 512 analog, including 1,024 IP devices standard system capability
- Satellite feature allows linking 64 WJ-MPU955A standalone systems to a global system with universal cross network access
- Supports up to 1,024 alarms inputs and various alarm source type and management
- Supports up to 1,024 event schedules
- Flexible system design for use with both analog and IP systems
- 16 simultaneous operators per local system
- Operator management, priority, access and timer executed restrictions
- Redundant server option
- User-friendly administrator console
- 3x built-in network interfaces (10Base-T/100Base-TX)



4 Channel MPEG-4/JPEG Video Encoder with Video Analytics

WJ-NT314



- Connect up to 4 analog cameras
- 2 Channel video analytics:
 - 8 detection programs, each with 3 intruder detection areas and 1 object abandonment/removal detection area
 - Trace up to 8 detected objects per channel
 - Depth correction allows more accurate detection when scene includes deeper depth
- MPEG-4/JPEG digital output at VGA image size with up to 30 ips
- Progressive output allows every frame to be clear when subject is moving
- SD memory card slot for alarm recording and backup due to network failure
- Bi-directional audio (1 channel)
- Unit and camera title display: up to 20 alphanumeric characters

4 Channel MPEG-4/JPEG Video Encoder

WJ-NT304



- Allows for smooth migration to an IP system while utilizing up to 4 existing analog cameras
- Transmit VGA (640 x 480) images in either MPEG-4 or JPEG, up to 30 fps
- MPEG-4/JPEG dual output
- Panasonic camera control over coax
- SD memory card slot for manual, alarm or network failure recording
- Progressive output
- Built-in network interface
- Alarm e-mail notification
- Bi-directional audio (1 channel)
- FTP client function enables periodic data transfer



Technology in Detail Guide



22x optical zoom Equates to 3.8mm to 83mm focal length lens with 10x digital zoom, providing 220x total zoom capability.



30x optical zoom Equates to 3.8mm to 114mm focal length lens with 10x digital zoom, providing 300x total zoom capability.



ABS Adaptive Black Stretch technology makes the dark areas of a scene clearly visible.



Auto Back Focus Optimizes the back focus automatically for clear, sharp images. The CCD position automatically adjusts when changing from color to B/W mode, eliminating any focus shift problems.



Day/Night Camera will automatically or manually switch from color mode (daytime) to B/W mode (nighttime) to achieve optimal viewing.



H.264 A new video compression format that offers high video resolution at lower file sizes.



IP66 "Ingress Protection 66" - the 66 refers to ingress protection for dust, and water from heavy seas, or water projected in powerful jets shall not enter the enclosure in harmful quantities.



i-Pro MEGA Super Dynamic Exclusive Panasonic technology offers 128x dynamic range, plus Adaptive Black Stretch (ABS) for exceptional resolution even in low light; auto image stabilization and face detection to enhance image details. Check individual product specifications.



MEGA Pixel A resolution of one million pixels.



PoE Power over Ethernet (IEEE802.3af).



Ready Tuff

Vandal-resistant camera designation.



MPEG-4/JPEG

Selectable compression technologies. MPEG-4 is a Wavelet-based file that delivers professional quality audio and video streams over a wide range of bandwidths. Defined by the Moving Pictures Expert Group (MPEG) and was standardized in October 1998. JPEG is the standard for compressing still images. It produces high quality images but typically requires more space for storage. Defined by the Joint Photographic Experts Group.



SDIII

Offers numerous camera performance attributes including: 128x dynamic range; pixel-based digital contrast correction; auto image stabilizer; scene change detection; 30X optical zoom (300X electronically); adaptive digital noise reduction; 540 lines of color resolution; and extreme low light sensitivity in color (0.5 lux) and B/W (0.06 lux). Check individual products for exact specifications.



SD5

Exclusive Panasonic technology offers 128x dynamic range, plus Adaptive Black Stretch (ABS) for exceptional resolution even in low light, intelligent Video Motion Detection (i-VMD) includes object detection (removal and left behind), scene change detection when lens is covered, removed, defocused and auto image stabilization. Check individual product specifications.



SD Card

"Secure Digital"- A small memory card featuring a high data transfer rate and encryption capability to protect content.



Up The Coax

Supports Up-the-Coax (coaxial cable) signal transmission and control.

User Testimonial

For more installations and detailed application stories, visit panasonic.com/security



Education

"...I knew what the potential was and was disappointed at the limitations I was seeing with most of the products on the market. Then I found Panasonic."

*Dave Young
Chapman University*

Key Installations



Commercial/Industrial/ Retail

Amazon.com – various locations
Bank of America – various locations
Ciba - Newport, DE
E.I. DuPont – Washington Works, WV
Eaton Corporation – Moon Township, PA
Lockheed Martin – Bethesda, MD
Oberthur Card Systems – Exton, PA
Syngenta Seeds –
various locations in Hawaii
Sistersville Tank Industries –
Sistersville, WV
Tanger Outlet Mall – Deer Park, NY
XL Insurance – Exton, PA

Education

Allendale Schools – Allendale, MI
Avon Lake Schools – Avon Lake, OH
Broward County Public School District –
Broward County, FL
Chapman University – Orange, CA
Cleveland State University –
Cleveland, OH
Coatesville School District –
Coatesville, PA
Duluth Schools – Duluth, MN
Edina Schools – Edina, MN
Edinboro University – Edinboro, PA
Hamilton Public Schools – Hamilton, MI
Hibbing Schools – Hibbing, MN
LA Mission College – Los Angeles, CA
Marietta Schools – Marietta, OH
Norfolk State University – Norfolk, VA
Oberlin College – Oberlin, OH
Owen J. Roberts School District –
Pottstown, PA
Palm Beach County Public School
District – Palm Beach, FL
Parkersburg Schools – Parkersburg, WV
Purdue University – West Lafayette, IN
Saginaw Valley State University –
Saginaw, MI

Education - continued

San Juan Unified School District –
San Juan, CA
Shelbyville Schools – Shelbyville, IN
Spring Lake Public Schools –
Spring Lake, MI
St. Michael Schools – St. Michael, MN
Taft High School – Taft, CA
Texas Christian University –
Fort Worth, TX
Ventura Community College District –
Ventura, CA
Williamstown High School –
Williamstown, WV

Government/Corrections

3 Rivers State Park District –
Eden Prairie, MN
City of Marietta Aquatic Center –
Marietta, OH
City of Marietta Municipal Court –
Marietta, OH
Kensington Fire Department –
Kensington, MD
Midland County Jail – Midland, MI
St. Mary's County – St. Mary's, MD
Tyler County Sheriffs Department –
Middlebourne, WV
Washtenaw County Jail – Ann Arbor, MI

Healthcare

Owatonna Clinic – Owatonna, MN
Sherman Hospital – Elgin, IL

Sports/Arenas

Busch Stadium – St. Louis, MO
McCormack Center – Chicago, IL
Prudential Center – Newark, NJ
Westgate – Glendale, AZ

Customer Support

To place, modify or check an order, or make shipping changes.

Toll-Free Phone: 877.867.0623

Toll-Free Fax: 877.665.5647

Technical Support

For technical support on installation, programming and configuration.

Toll-Free Phone: 800.528.6747

Toll-Free Fax: 888.809.6198

e-mail: psditech@us.panasonic.com

Government Sales

GSA Contract Number

For All Security Products: GS-07F-0698N

Toll-Free Phone: 877.733.3689 (option 4)

Headquarters

Panasonic System Solutions Company

Three Panasonic Way, 2H-2

Secaucus, NJ 07094

Toll-Free Phone: 877.733.3689

panasonic.com/security



Panasonic System Solutions Company has expanded our **Panasonic Solution Developer Network (PSDN)** program globally. Counting more than 90 members since its launch in 2006, the expanded program further enhances and expedites interoperability and integration capabilities for Panasonic's video surveillance solutions with participating equipment and software suppliers.

Exciting new program benefits include a unified API to simplify the integration of Panasonic systems products, and new SDKs for i-Pro network cameras and recorders. Additionally, PSDN offers program members interface protocols, software development tools, and technical information to efficiently integrate Panasonic's leading analog and i-Pro IP video surveillance systems products. Through PSDN, Panasonic is helping to provide resellers with expanded product solution offerings and end users with seamless security solutions. Visit psdn.info.



spec assist, Panasonic's award winning video surveillance system design tool, provides valuable information and resources for systems integrators, dealers, consultants, architect & engineers, and end users to help formulate bids and proposals. All on a handy CD/DVD, spec assist contains bid specifications for Panasonic video surveillance systems products, along with CAD illustrations, operating instructions, spec sheets and calculator tools to optimize system configurations and proposals. spec assist is available at no cost to professional system designers, installers, and security professionals. Make sure you have the most updated version by ordering your free CD/DVD at panasonic.com/security.



Panasonic Security Systems offers the **i-Pro Certified Reseller (IPCR) Program** to train highly capable channel resellers who can design, implement, and support newly emerging opportunities in the IP/IT security space.

Potential i-Pro Certified Resellers must be accepted for candidacy and obtain training provided by Panasonic.

For more detailed information about the certification process and training requirements, visit panasonic.com/P-Tech.