

Pentaho Data Integration Installation Guide

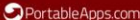
Note: Please do not be discouraged if you have trouble with the installation. Software installation is a challenging part of managing data warehouses, especially when using open source software. You may face similar problems in your future job as well. Please take this opportunity to practice your own problem solving ability. And... you're not alone! Seek help from your peers in the UB Learns discussion forum.

PENTAHO DATA INTEGRATION

PDIPortable is a community edition data integration application packaged as a portable app, so you can run a full copy of the Pentaho Data Integration (Community Edition) (aka Kettle) application on your iPod, USB flash drive, portable hard drive, etc. It has all the same features as Pentaho Data Integration, plus, it leaves no personal information behind on the machine you run it on, so you can take it with you wherever you go.

PDIPortable is packaged in PortableApps for easy integration. You can download the [PortableApps](https://portableapps.com/download/success) platform to run the portable edition of Pentaho DI. For download instructions follow: <https://portableapps.com/download/success>

1. Install the platform that will allow you to run the portable Spoon IDE from <https://portableapps.com/>




[Download](#)
[Features](#)
[Apps](#)
[Hardware](#)
[Forums](#)
[Development](#)
[Support](#)
[About](#)
[Donate](#)
[Login / Create Account](#)

Platform 16 Beta 2 (Sep 21, 2018). Please donate.

400+ real apps, New: LameXP (Aug 27, 2018)

Over 770 million app downloads

Language: Deutsch, Español, Français, Bahasa Indonesia, Italiano, Português (do Brasil), Português (Europeu), Πρωσσικό, 日本語, 中文 (簡體), 正體中文 (繁體)



Set your PC free.

Your favorite apps

on cloud, local, or portable drives

work on PCs wherever you go

[Download Now - Free](#)

Learn more... | Latest apps and news...

PortableApps.com

Download Features Apps Hardware Forums Development Support About Donate Login / Create Account

Platform 16 Beta 2 (Sep 21, 2018). Please donate.

400+ real apps, New: LameXP (Aug 27, 2018)

Over 770 million app downloads

your computer, without the computer™

The PortableApps.com Platform™ is a full-featured portable software system that ties all your portable apps together and lets you build your own custom portable app suite for use in your synced cloud folder, on your local PC, or on a portable USB drive.

Awesome Features: Complete App Store | App Organization
Automatic Software Updates | Themes and Customization
Portable Fonts | Integrated Backup and Restore | And More!

The PortableApps.com Platform is 100% Free. Free to use. Free to share. And fully open source. Please read a personal appeal from PortableApps.com founder John T. Haller and donate today.

[Make a Donation](#)

Having difficulty upgrading from 14.4.2? See these directions

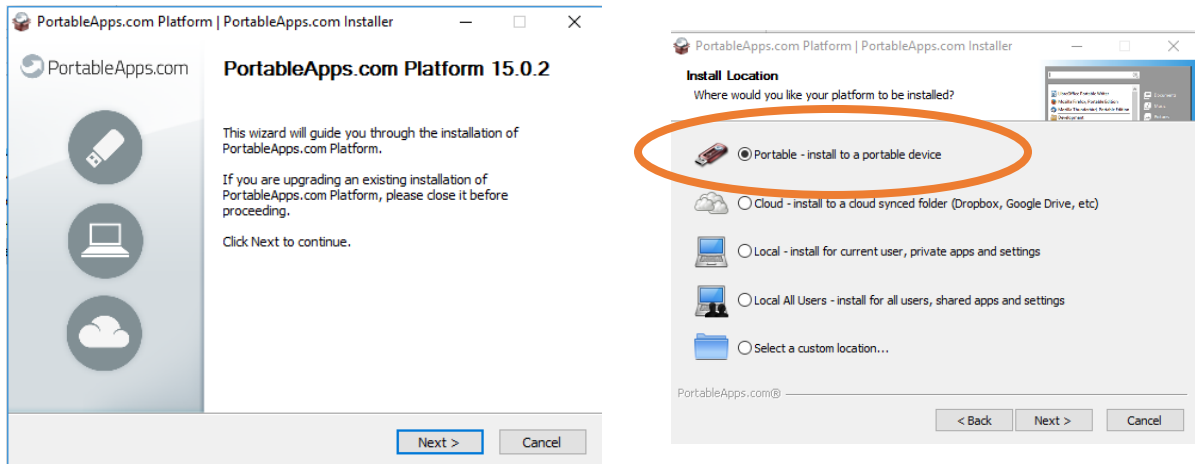
[Download from DuckDuckGo](#)

Version 15.0.2 for Windows, 55 Languages
5MB download | 12MB installed
[Help Translate](#) | [Download Details](#)

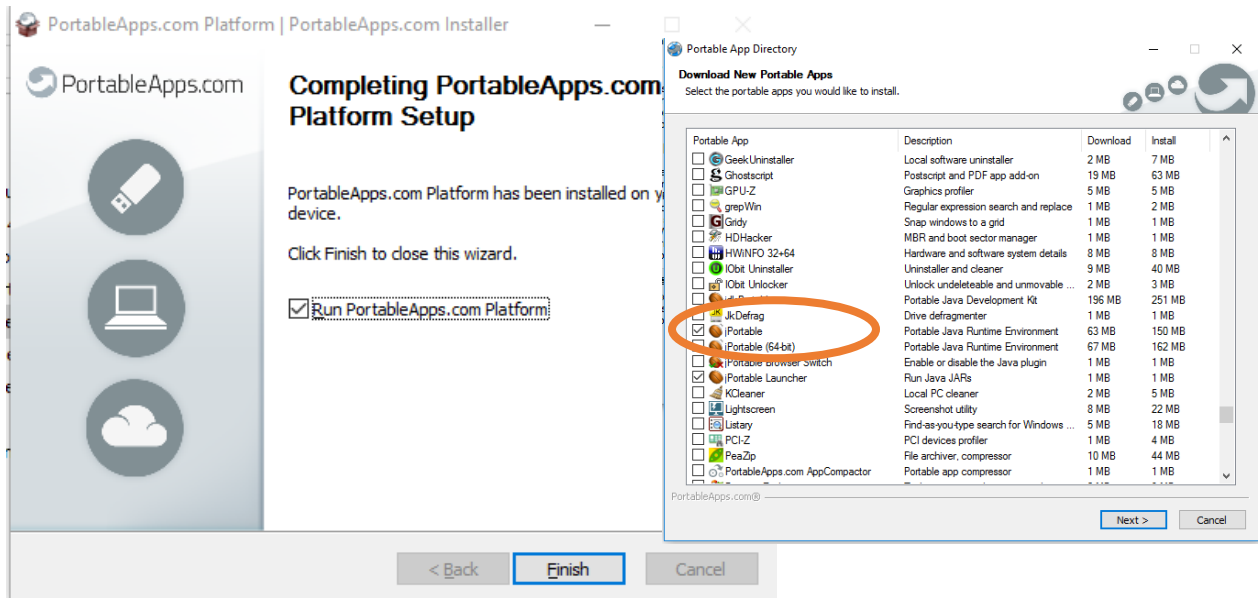
Additional Download Mirrors: [SourceForge](#), [PortableApps.com](#)

Note: You can download this platform directly onto a storage drive to access your PDI Portable form anywhere!

2. Save the setup file to the location from where you will run the ETL tool (PDI Portable). This is a straight forward process. More instructions can be found in the download page:
<https://portableapps.com/download/success>
3. Run the setup file and chose a Portable location should you want to run PDI Portable from an external drive, otherwise just install the platform locally.

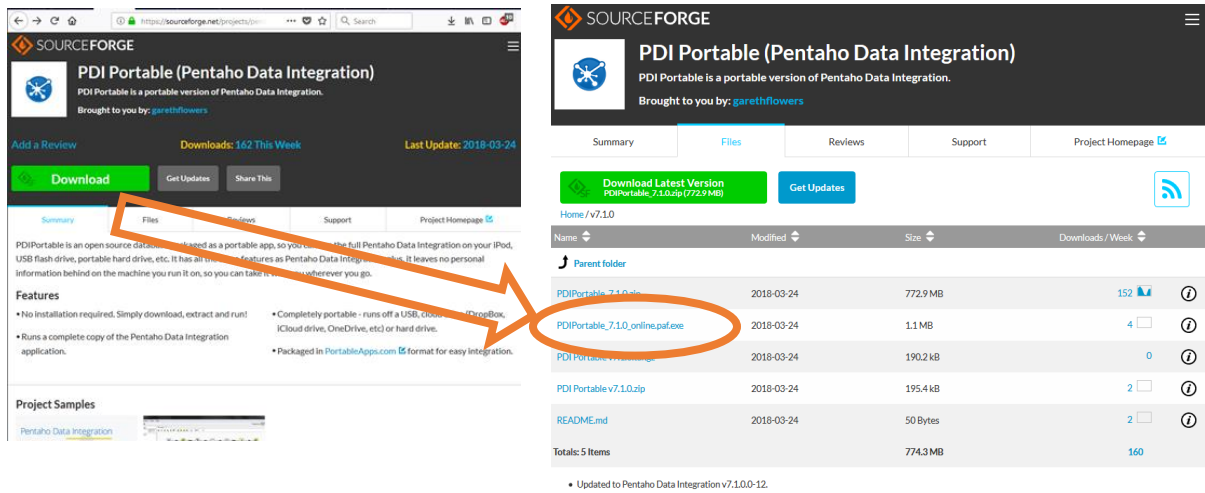


4. Once you confirm the location and install the platform, you can run it. Make sure you download the portable app from the Utilities group.

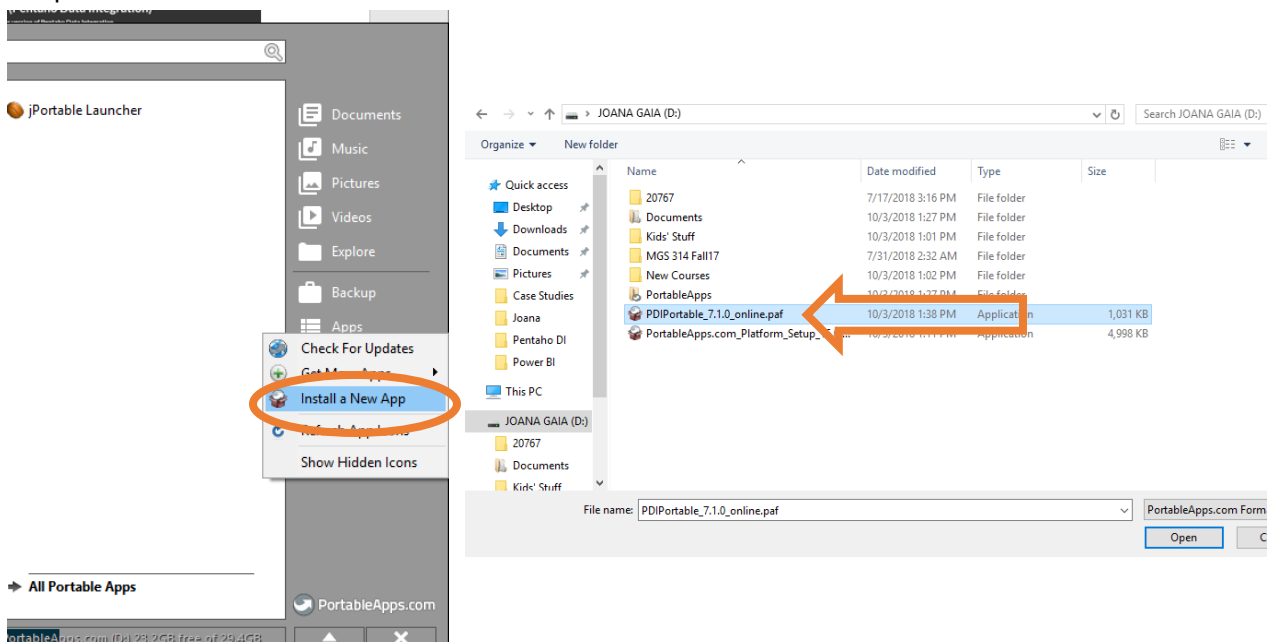


5. Next, you should install the community edition of Pentaho DI Portable (PDI Portable). The latest stable version (7.1.0) is available from the Source Forge website
(<http://sourceforge.net/projects/pentahodataintegrationportable/>).

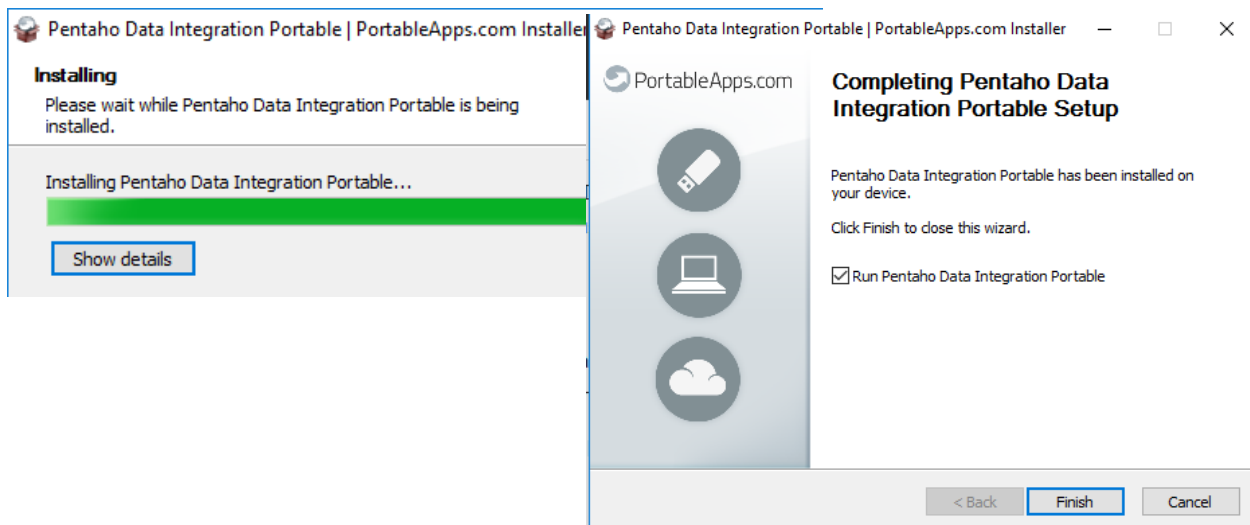
6. To run PDI Portable from an external drive, make sure you download the paf.exe file to the same drive where you installed your portable apps platform.



7. Go to back to your portable applications platform and install the Spoon IDE (PDI Portable interface) in the platform.



8. Install the PDI Portable App and launch it to start using! The installation process takes a little bit to complete



CHECK YOUR INSTALLATION

You are now ready to start the Pentaho Data Integration Tool.

1. Run the PDI Portable app

