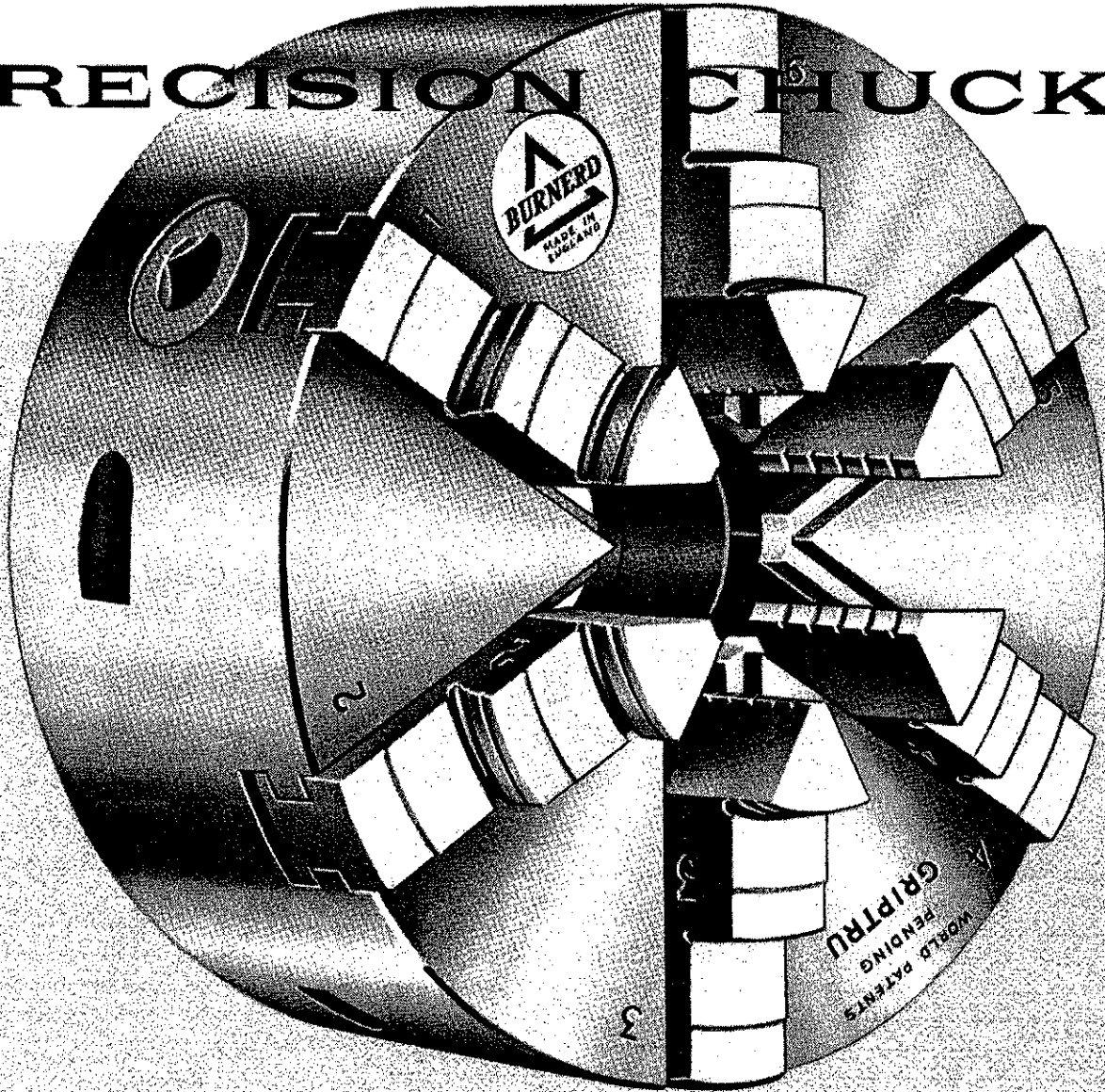
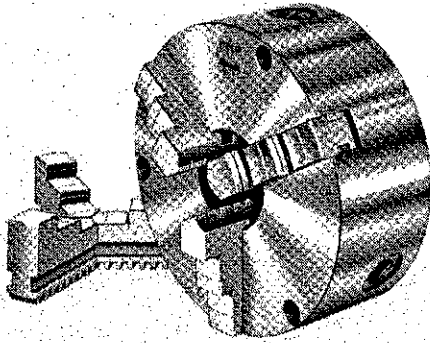


# BURNERD

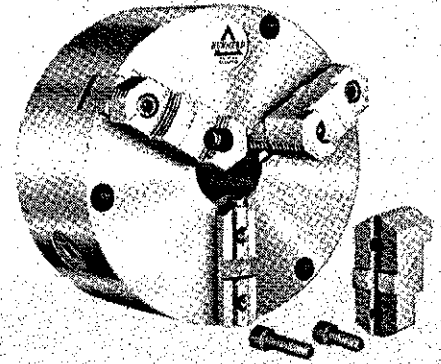
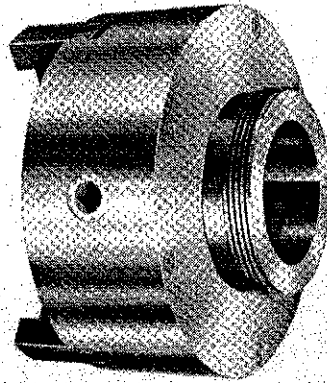
## PRECISION CHUCKS



with two sets  
of solid jaws



with master jaws and  
reversible hard tops



As shown below, universal chucks are available with two sets of solid jaws (inside and outside) or with master jaws and reversible hard tops.

Chucks with master jaws save time — merely reverse position of top jaws to change from inside to outside grip — and when installing special jaws made from soft blank tops.

#### FOR D-1 CAM-LOCK SPINDLE

#### FOR LONG TAPER SPINDLE

#### FOR BACKPLATE MOUNTING

Chuck Size	For Spindle	Solid Jaw Chuck No.	Master Jaw Chuck No.	Wt. Lbs.	Price
5	D1-3"	30AD3	—	14	123.00
9	D1-6"	—	53D6TJ	51½	225.00
10½	D1-6"	—	54D6TJ	92	267.00
10½	D1-8"	—	54D8TJ	92	280.00
12	D1-6"	—	53D6TJ	132	303.00
12	D1-8"	—	55D8TJ	132	320.00
15	D1-6"	—	56D6TJ	153	445.00
15	D1-8"	—	56D8TJ	153	456.00

Chuck Size	For Spindle	Solid Jaw Chuck No.	Master Jaw Chuck No.	Wt. Lbs.	Price
6	L00	N31L00	N31L00TJ	23¼	132.00
6	L0	N31L0	N31L0TJ	25½	132.00
7½	L00	N52L00	N52L00TJ	33	167.00
7½	L0	N52L0	N52L0TJ	34	167.00
8	L00	51L00	N51L00TJ	46	207.00
8	L0	51L0	51L0TJ	47	207.00
8	L1	51L1	51L1TJ	51	215.00
9	L00	N53L00	N53L00TJ	47	220.00
9	L0	N53L0	N53L0TJ	48	220.00
9	L1	N53L1	N53L1TJ	53	225.00
10½	L0	54L0	54L0TJ	84	262.00
10½	L1	54L1	54L1TJ	90	267.00
10½	L2	—	54L2TJ	94	280.00
12	L0	—	55L0TJ	127	297.00
12	L1	55L1	55L1TJ	132	303.00
12	L2	55L2	55L2TJ	136	315.00
15	L2	—	56L2TJ	168	460.00

Chuck Size	Solid Jaw Chuck No.	Master Jaw Chuck No.	Wt. Lbs.	Price	Adap-tor Plate No.*
3/4	NA29	—	4	68.00	BC6
4	NA30	—	6½	68.00	BC10
5	A30A	A30ATJ	12	80.00	BC13
6	NA31	NA31TJ	18	94.00	BC16
7½	NA52	NA52TJ	31½	125.00	BC19
8	A51	A51TJ	33½	142.00	BC21
9	NA53	NA53TJ	46	155.00	BC20
10½	A54	A54TJ	75	184.00	BC22
12	A55	A55TJ	99	215.00	BC23
15	—	A56TJ	143	305.00	BC35

\*See page 6 for dimensions and price.

# BURNERD PRECISION 3-jaw GRIPTRU chucks

Concentricity within .0002" total indicator reading is the accuracy you can expect and get with Burnerd GRIPTRU chucks. Once the initial work piece is centered to the required tolerance, duplicate parts can be chucked to within  $\pm .00025''$  without further adjustment. GRIPTRU's micro-adjusting

mechanism eliminates the need for expensive collets, fixtures ... saves time, ups production ... improves the accuracy of any machine tool, new or old. Available with two sets of solid jaws (inside and outside) or with master jaws and reversible hard tops, as indicated.

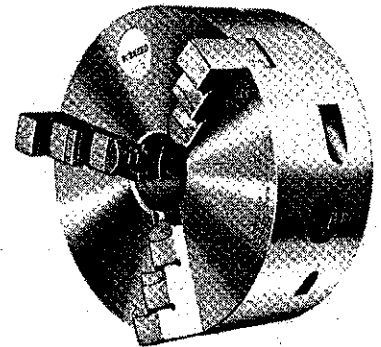
## FOR LONG TAPER SPINDLE

Chuck Size	For Spindle	Solid Jaw Chuck No.	Master Jaw Chuck No.	Wt. Lbs.	Price
6	L00	131L00	—	24	145.00
6	L0	131L0	—	26	145.00
8	L00	151L00	—	55	225.00
8	L0	151L0	151L0TJ	58	225.00
8	L1	151L1	151L1TJ	61	230.00
10½	L1	154L1	154L1TJ	92	325.00
12	L1	155L1	—	132	397.00
12	L2	155L2	—	136	415.00

## FOR BACKPLATE MOUNTING

Chuck Size	Solid Jaw Chuck No.	Master Jaw Chuck No.	Wt. Lbs.	Price	Adaptor Plate No.*
4	130	—	7	75.00	130AP
5	130A	—	14	92.00	130AAP
6	131	131TJ	19	119.00	131AP
8	151	151TJ	43	180.00	151AP
10½	154	—	85	238.00	154AP
12	155	155TJ	125	274.00	155AP

\*See page 6 for dimensions and price.



# 6-jaw GRIPTRU chucks

Burnerd 6-jaw GRIPTRU chucks are indispensable wherever soft or fragile materials or tubing must be chucked and machined to close tolerances. Chucking work to within .0002" precision takes but one minute ... duplicate parts are chucked to within  $\pm .00025''$  at scroll-chuck speed. Two sets of solid jaws.

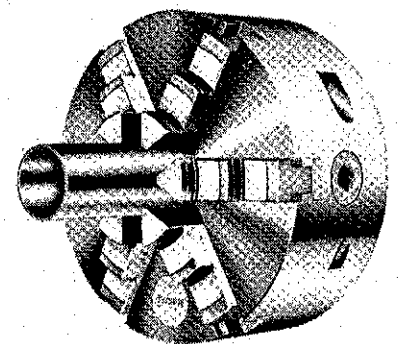
## FOR LONG TAPER SPINDLE

Chuck Size	For Spindle	Chuck No.	Wt. Lbs.	Price
6	L00	131ZL00	25¾	180.00
6	L0	131ZL0	27¾	186.00
8	L00	151ZL00	58	274.00
8	L0	151ZL0	61	280.00
8	L1	151ZL1	64	288.00
10½	L1	154ZL1	98	410.00
12	L2	155ZL2	142	515.00

## FOR BACKPLATE MOUNTING

Chuck Size	Chuck No.	Wt. Lbs.	Price	Adaptor Plate No.*
5	130AZ	15¾	110.00	130AAP
6	131Z	21½	155.00	131AP
8	151Z	47	230.00	151AP
12	155Z	129	375.00	155AP

\*See page 6 for dimensions and price.



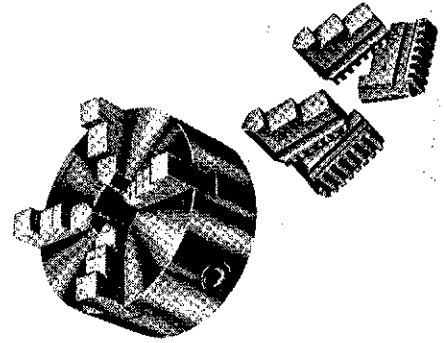
## FOR D-1 CAM-LOCK SPINDLE

Chuck Size	For Spindle	Chuck No.	Wt. Lbs.	Price
12	D1-8	155Z08	136	497.00

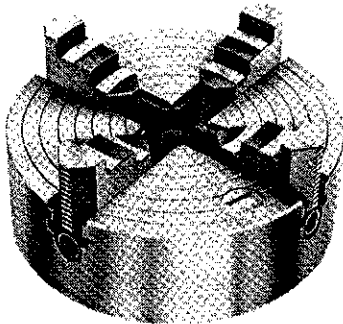
### FOR BACKPLATE MOUNTING

Chuck Size	Chuck No.	Wt. Lbs.	Price	Adaptor Plate No.*	Chuck Size	Chuck No.	Wt. Lbs.	Price	Adaptor Plate No.*
6	NA31Y	18 1/4	110.00	BC16	18	A57Y	200	600.00	BC36

\*See page 6 for dimensions and price.



## 4-jaw heavy-duty independent chucks



Burnerd heavy-duty independent chucks have rugged alloy iron bodies, large case-hardened ground steel jaws, large-diameter case-hardened operating screws. Operating screws of chucks 10-inch diameter and larger have double thrust bearings — chucks 12-inch diameter and larger have T-slots.

### FOR BACKPLATE MOUNTING

Chuck Size	Chuck No.	Wt. Lbs.	Price	Adaptor Plate No.*
6 1/2	NA39	16	72.00	BC13
8	NA40	34	92.00	BC25
10	NA41	60	119.00	BC26
12	NA42	87	142.00	BC27
14	NA43	110	162.00	BC28
16	NA44	154	185.00	BC30 or 31

\*See page 6 for dimensions and price.

### FOR LONG TAPER SPINDLE

Chuck Size	For Spindle	Chuck No.	Wt. Lbs.	Price
8	L00	N40L00	38	137.00
8	L0	N40L0	39	137.00
10	L00	N41L00	60	167.00
10	L0	N41L0	62	167.00
10	L1	N41L1	65	173.00
12	L0	N42L0	90	220.00
12	L1	N42L1	92	225.00
12	L2	N42L2	100	238.00
14	L1	N43L1	117	256.00
14	L2	N43L2	126	267.00
16	L1	N44L1	157	285.00
16	L2	N44L2	164	297.00
18	L3	45L3	211	435.00

### FOR D-1 CAM-LOCK SPINDLE

Chuck Size	For Spindle	Chuck No.	Wt. Lbs.	Price
6 1/2	D1-4	N39D4	22	122.00
10	D1-6	N41D6	62	184.00
12	D1-6	N42D6	87	233.00
12	D1-8	N42D8	100	243.00
14	D1-6	N43D6	106	262.00
14	D1-8	N43D8	106	272.00
16	D1-6	N44D6	161	285.00
16	D1-8	N44D8	158	300.00

## 4-jaw light-duty independent chucks

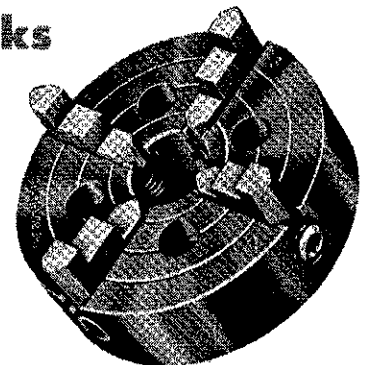
Compactly designed with minimum overhang, Burnerd light-duty chucks are ideal for use on small lathes, grinders, dividing heads. Have case-hardened jaws and operating screws.

### FOR BACKPLATE MOUNTING

Chuck Size	Chuck No.	Wt. Lbs.	Price	Adaptor Plate No.*	Chuck Size	Chuck No.	Wt. Lbs.	Price	Adaptor Plate No.*
6	A34	10	52.00	BC8	8	A37	18 1/4	82.00	BC10
					10	A38	41 1/2	108.00	BC16

\*See page 6 for dimensions and price.

Quotations for other sizes on request.



# **BURNERD** precision chucks . . . unsurpassed for accuracy, gripping power, service life, and value

Burnerd chucks are the culmination of over 100 years' experience in the manufacture of work holding devices.

The result of these many years of specialization is a world-wide reputation for unsurpassed quality and value.

Burnerd chucks are built in England's most modern factory devoted exclusively to the manufacture of chucks.

Modern engineering, production and inspection facilities . . . coupled with a company-wide dedication to product superiority . . . have made the name Burnerd synonymous with leadership.

Burnerd chucks are backed by the coast-to-coast sales and service organizations of one of America's leading machine tool manufacturers, Clausing.

## **UNIVERSAL and INDEPENDENT CHUCKS**

Superiority of design, careful selection of materials, and rigid control over every stage of manufacture are all reflected in the pace-setting performance of Burnerd universal and independent chucks.

Bodies are high-tensile alloy iron castings.

Scrolls of universal chucks are precision-machined from heat-treated alloy steel. Pinions are case-hardened nickel steel — there are three in each scroll chuck. Independent chuck operating screws are heat-treated alloy steel.

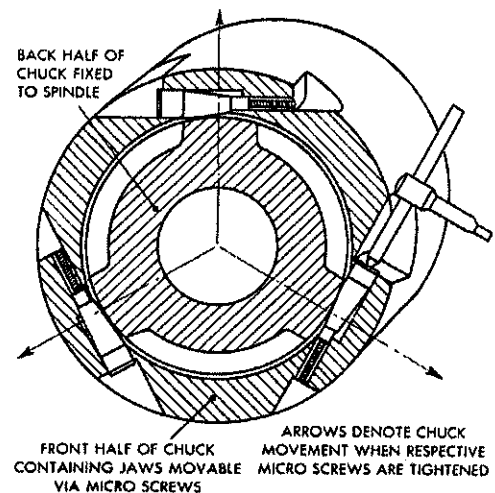
Jaws are case-hardened. Bodies, and bearing and gripping surfaces of jaws are ground.

## **GRIPTRU SCROLL CHUCKS** **concentricity within .0002" TIR**

Burnerd GRIPTRU chucks bring tool room accuracy to the production department — an ingenious micro adjustment mechanism permits *holding work concentric to within .0002" TIR*. Once a GRIPTRU is set for a job, no further adjustment is needed to chuck duplicate parts to within  $\pm .00025"$ .

Operation is simple. Chuck jaws are advanced to the work piece by turning the chuck pinion. The three adjusting screws are backed off. A dial indicator is placed against the work, and the chuck is rotated to the lowest reading. The micro screw nearest the low reading is then tightened until gauge needle moves to half the total eccentric reading. Chuck is again rotated and the adjusting procedure is repeated until test piece is running within desired tolerance. Entire operation usually takes less than one minute.

Burnerd GRIPTRU chucks are built to retain their accuracy under the toughest working conditions. Bodies are high-tensile alloy iron, scrolls are heat-treated alloy steel forgings, pinions are case-hardened nickel steel, jaws are case-hardened steel.



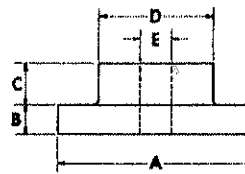
# BURNERD backplates for Burnerd precision chucks

Backplates are high-tensile alloy iron, rough turned ready for finishing cuts and fitting to spindle.

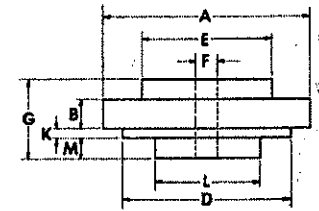
## FOR UNIVERSAL AND INDEPENDENT CHUCKS

Casting No.	For Chuck	A	B	C	D	E	Wt. Lb.	Price
BC3	A35B	3	3/8	3/8	1 1/2	S	1	\$3.95
BC4	A36	3 1/8	3/8	7/8	2 3/8	S	3	5.20
BC6	NA29	3 5/16	3/8	7/8	2 1/8	S	3	4.50
BC8	A34	3 3/8	1/2	1	2 3/8	S	3	5.20
BC10	NA30, A37	4 1/8	1/2	1	2 3/8	S	4	6.00
BC13	A30A, NA39	5 1/8	1/2	1 1/2	3 1/4	1 1/16	7	8.65
BC16	NA31, NA31Y, A38	6 3/8	3/8	1 7/8	3 3/8	1 1/16	11	10.95
BC19	NA32	7 3/8	7/8	2 7/8	4 7/8	1 1/16	25	16.70
BC20	NA53	9 3/8	7/8	3 3/8	5 3/8	2 1/16	36	25.50
BC21	A51	8 3/8	7/8	1 1/8	3 7/8	1 1/16	17	17.50
BC22	A54	10 3/8	1 1/8	1 7/8	4 3/8	1 3/16	40	28.40
BC23	A55	12 1/4	1 3/16	2 1/8	4 3/8	1 3/16	51	34.25
BC25	NA40	5 3/4	1 3/8	2 3/8	3 3/8	1 1/16	18	11.55
BC26	NA41	7 3/8	1 3/8	2 3/8	4 3/8	1 3/16	32	17.55
BC27	NA42	8 1/4	1 3/8	3 1/4	4 3/8	1 3/16	40	22.45
BC28	NA43	8 1/4	1 3/8	3 1/8	5 3/8	1 3/16	47	28.40
BC30	NA44, small boss	9 3/8	1 3/8	1 7/8	4 3/8	1 13/16	42	32.55
BC31	NA44, large boss	9 3/8	1 3/8	2 3/8	6 3/8	3 1/16	44	38.75
BC33	NA48, large boss	11 3/8	1 3/8	2 3/8	7 3/8	4 1/16	63	55.75
BC35	A56Y, A56TJ	11 3/8	1 7/8	1 7/8	6 3/8	2 3/16	76	62.25
BC36	A57Y	15 1/8	1 7/8	1 7/8	6 7/8	2 3/16	126	103.00

(S Denotes Solid Boss)



For Univ. and Ind. Chucks



For Griptru Chucks

## FOR GRIPTRU CHUCKS

Casting No.	For Chuck	A	B	D	E	F	G	K	L	M	Wt. Lb.	Price
130AP	130	4 1/4	3/8	3 1/4	2 1/2	3/8	1 1/4	3/32	1 3/4	1 3/4	5	\$ 6.00
130AAP	130A, 130AZ	5 3/4	1/2	4 1/4	3	1	1 1/16	3/32	2 3/4	7/16	7	8.75
131AP	131, 131Z	6 3/4	1/2	5 1/4	3	1 1/4	1 1/16	3/32	2 3/4	1 3/4	9	11.00
151AP	151, 151Z	8 1 3/4	3/8	6 3/4	3 3/4	1 1/4	1 3/8	3/32	3 3/4	1 1/16	19	17.50
154AP	154	10 3/4	3/4	8 3/4	4 1/4	1 3/8	3	3/32	5 2/4	1 1/16	39	28.50
155AP	155, 155Z	12 3/4	1 1/16	10 1/4	4 1/2	1 3/8	3 1/4	3/32	5 3/4	3/4	56	34.25

Precision and value characterize Burnerd chucks.

Their recognized superiority stems from many things: decades of experience in a single field . . . uncompromisingly high standards of workmanship . . . and, the advanced manufacturing and inspection facilities illustrated on this page.

When you invest in a Burnerd, you can be sure you are getting the maximum in precision, service life and value.

Burnerd chucks are backed by coast-to-coast sales and service organizations of one of America's leading machine tool manufacturers — Clausing.

Burnerd chucks are guaranteed against defects in material and workmanship for a period of two years, subject to standard warranty procedure.

Design and construction are subject to modification and improvement without notice.

**BURNERD**  
CHUCKS  
**CLAUSING DIVISION**  
ATLAS PRESS CO.

1915 N. PITCHER, KALAMAZOO, MICH. U.S.A. 49001

Phone: Area Code 616 345-7155

Catalog B-10 © Atlas Press Co., 1966

Printed in U.S.A.

1266IB15

All prices are F.O.B. Kalamazoo, Michigan, and are subject to change without notice.

