



# Prolin TermAssist Operating Guide

V 3.0.0



PAX Computer Technology ( Shenzhen ) Co.,Ltd.

Copyright © 2000-2015 PAX Computer Technology (Shenzhen) Co., Ltd.

All rights reserved. No part of the contents of this document may be reproduced or transmitted in any form without the written permission of PAX Computer Technology (Shenzhen) Co., Ltd.

The information contained in this document is subject to change without notice. Although PAX Computer Technology (Shenzhen) Co., Ltd. has attempted to ensure the accuracy of the contents of this document, this document may include errors or omissions. The examples and sample programs are for illustration only and may not be suited for your purpose. You should verify the applicability of any example or sample program before placing the software into productive use.

## Revision History

Date	Version	Note	Author
2013-10-14	V2.0.0		Macstin.Tam
2014-02-21	V3.0.0	Modify the steps of installation of application, font, PUK; Add the steps of download or update of Prolin system files by SysLoader	Fang Wei

# Contents

1	Introduction .....	5
1.1	Purpose .....	5
1.2	Application Platform .....	5
2	TermAssist2.2 .....	6
3	Usage of Functions.....	8
3.1	Setting.....	8
3.1.1	Connect Setting .....	8
3.1.2	General Setting .....	9
3.2	Connect.....	10
3.2.1	Activate the Connection .....	10
3.2.2	Terminate the Connection .....	14
3.3	Installation of Application, Font, PUK.....	15
3.3.1	Installation of Application, Font .....	15
3.3.2	Installation of Data Files .....	17
3.3.3	Installation of PUK File .....	18
3.4	Uninstallation of Applications, Font, PUK.....	19
3.5	Refresh.....	21
4	System Loader.....	23
4.1	SysLoader .....	23
4.2	Steps of Installation by SysLoader .....	25

## Table & Figure list

Table 1 Corresponding table of download file types .....	27
Figure 2.1 The interface of TermAssist .....	6
Figure 2.2 XCB between POS and PC .....	7
Figure 3.1 Choose connection Mode for the connection .....	9
Figure 3.2 General Settings .....	10
Figure 3.3 The default state of connection .....	10
Figure 3.4 Activate the connection .....	11
Figure 3.5 Display the connected mode .....	11
Figure 3.6 “Connected” is displayed in status bar .....	11
Figure 3.7 Information of POS displayed on Home page .....	13
Figure 3.8 Error message of connection.....	14
Figure 3.9 The connection is terminated.....	14
Figure 3.10 Home page of the disconnection status.....	14
Figure 3.11 Installation of applications, font .....	16
Figure 3.12 Applications, Font files are being installed .....	17
Figure 3.13 Installation of data files.....	18
Figure 3.14 Installation of PUK Files .....	19
Figure 3.15 The warning windows while installing the PUK file.....	19
Figure 3.16 Uninstallation of applications .....	20
Figure 3.17 Uninstallation of font and PUK files .....	21
Figure 3.18 The warning window displays while uninstalling the PUK .....	21
Figure 3.19 Refresh the terminal information .....	22
Figure 4.1 Startup SysLoader.....	24
Figure 4.2 Interface of SysLoader.....	25
Figure 4.3 Installation of Prolin system files .....	26
Figure 4.4 Display on the screen of POS .....	26

# 1 Introduction

---

## 1.1 Purpose

This document describes operations of TermAssist2.2. It is used to guide the users and developers how to complete the installation functions by TermAssist2.2.

## 1.2 Application Platform

It is based on Prolin system that supports XCB server. Prolin is a POS operating system which based on Linux.

# 2TermAssist2.2

TermAssist is the PAX POS terminal download tool. It supports to install or uninstall the applications and other related files. TermAssist2.2 is different with the previous versions.

The main interface is composed of 5 parts, they are title bar, navigation bar, main window and status bar, shows as the Figure 2.1.



Figure 2.1 The interface of TermAssist

From the version 2.2, TermAssist is the Master which relies on the XCB server on PC, but not the server that using tftp. It requires users to complete the operations of connection,

installation and uninstallation. The difference of the connections between TermAssist and POS are list in Figure 2.2.

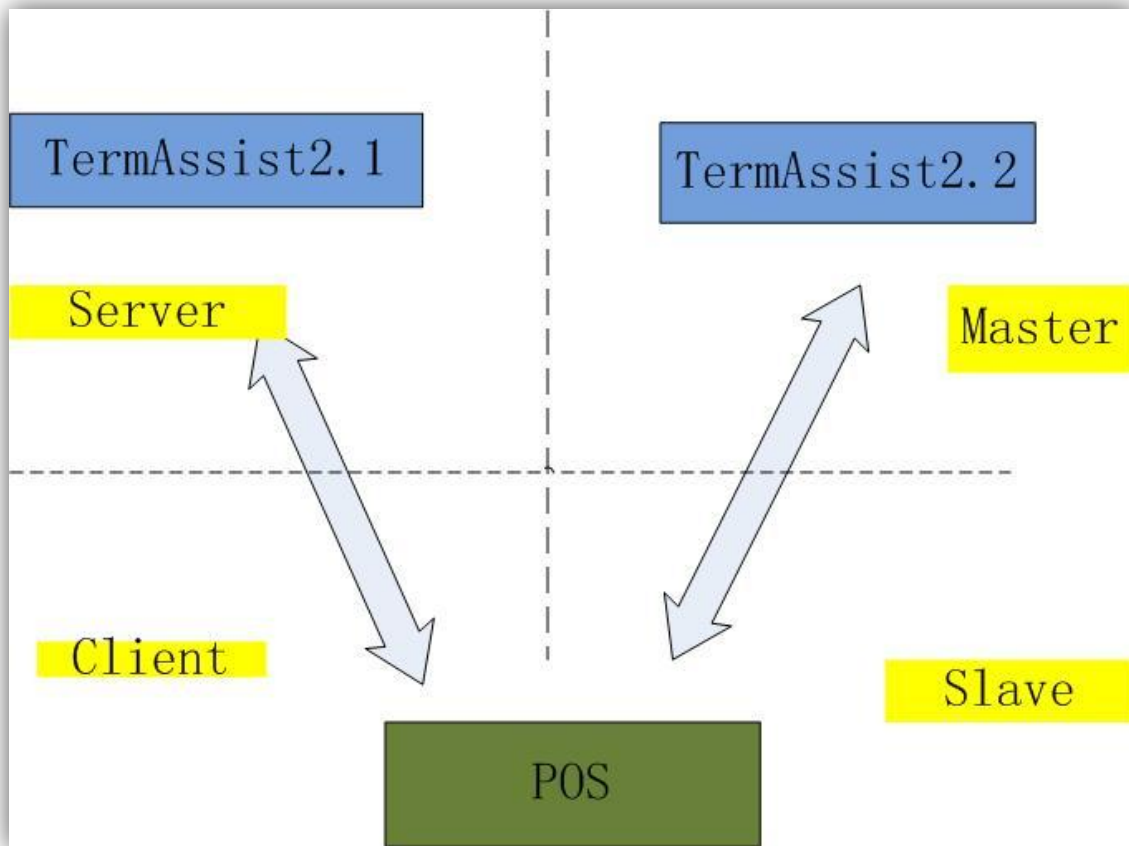


Figure 2.2 XCB between POS and PC



## 3 Usage of Functions

---

### 3.1 Setting

Some parameters must be setting before the POS is connected with PC by TermAssist tool which is based on XCB server.

#### 3.1.1 Connect Setting

TermAssist provides two connection modes: *Serial Port* and *Ethernet*. If select *Serial Port*, it need to set the connection serial port of PC. If select *Ethernet*, it requires to fill the destination IP address and the port.

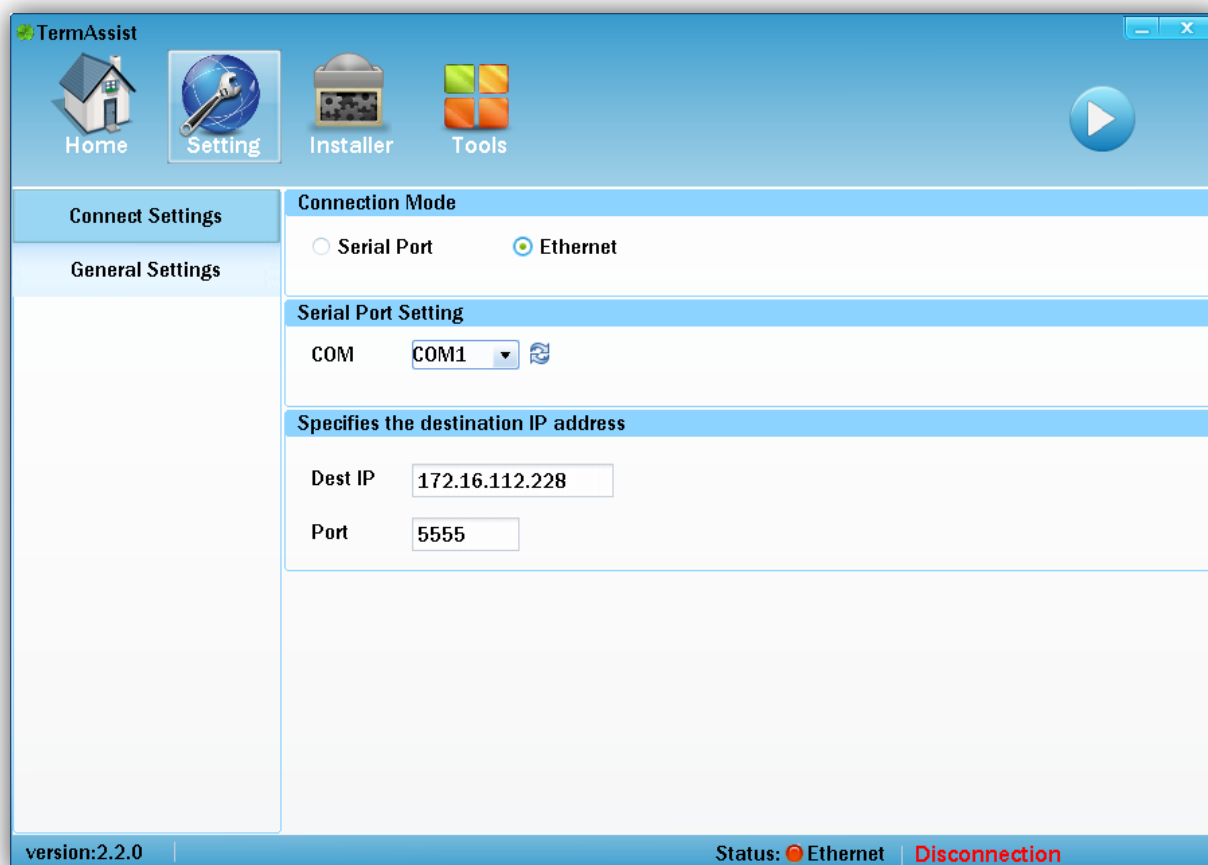


Figure 3.1 Choose connection Mode for the connection

### 3.1.2 General Setting

There are *Windows Setting* and *Language Setting* in this option.

In the *Windows Setting*, users can set the close button on the top right-corner to minimize the window to the System Tray.

In the *Language Setting*, users can set the language as Chinese or English.

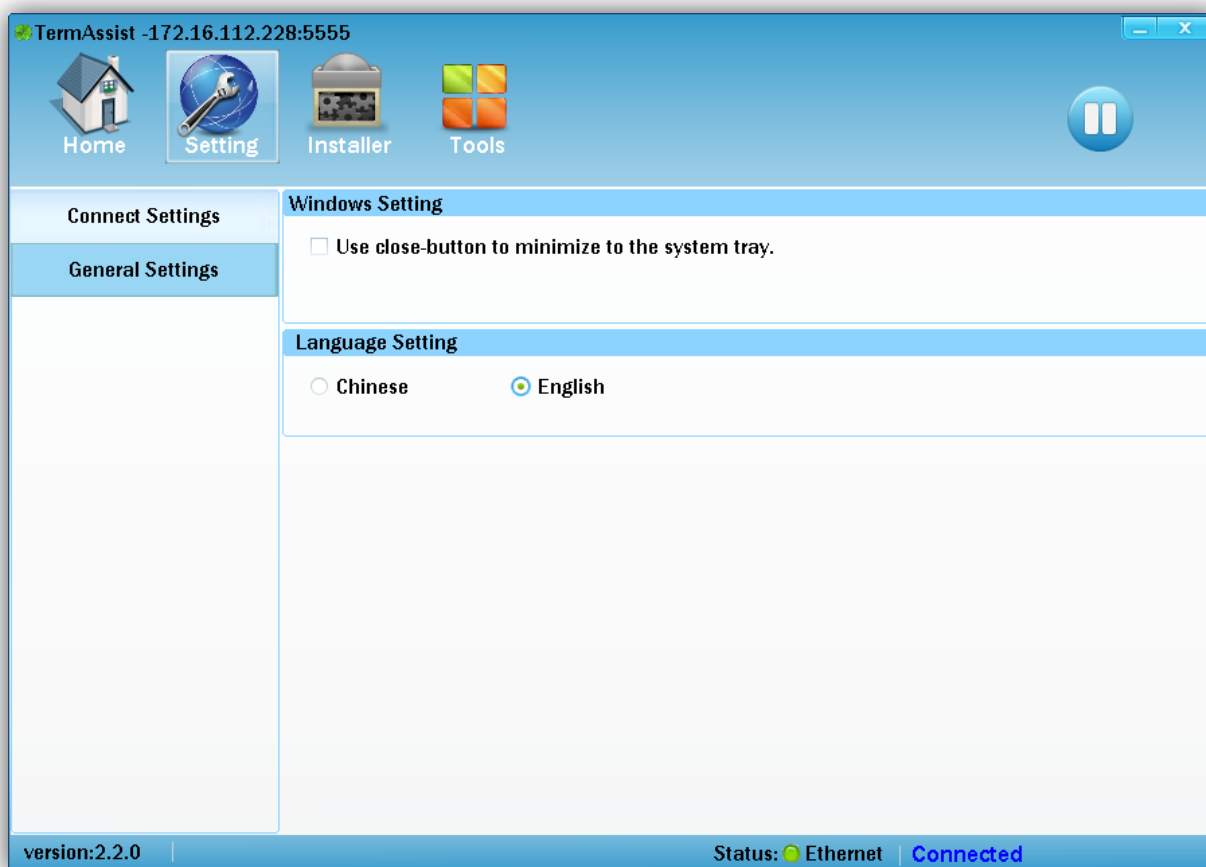


Figure 3.2 General Settings

## 3.2 Connect

The connection status of TermAssist is not in real-time. For example, when the cable is disconnected or the POS is power off, the tool does not automatically detect the connection status, and it remains the original. The status of the connection will be updated only if the connection is requested initiatively by the users.

The default state of the connection between POS and PC is disconnected shown in Figure 3.3.



Figure 3.3 The default state of connection

### 3.2.1 Activate the Connection


If the setting of the connection is completed, the connection will be active by clicking the *start button* (  ) which is based on XCB server.



Figure 3.4 Activate the connection

TermAssist2.2 supports users to open multiple windows to connect POS with PC via different connection ways.



The information of the connection way such as “com:COM10” will be displayed on the upper left corner of TermAssist interface shown in Figure 3.5 after the connection between POS and PC is successful, and the *start button* (  ) turns into *stop button* (  ) on the upper right corner of TermAssist interface. At the same time, “Connected” will be displayed on the lower right corner of TermAssist interface shown in Figure 3.6.



Figure 3.5 Display the connected mode

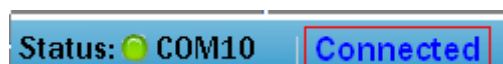
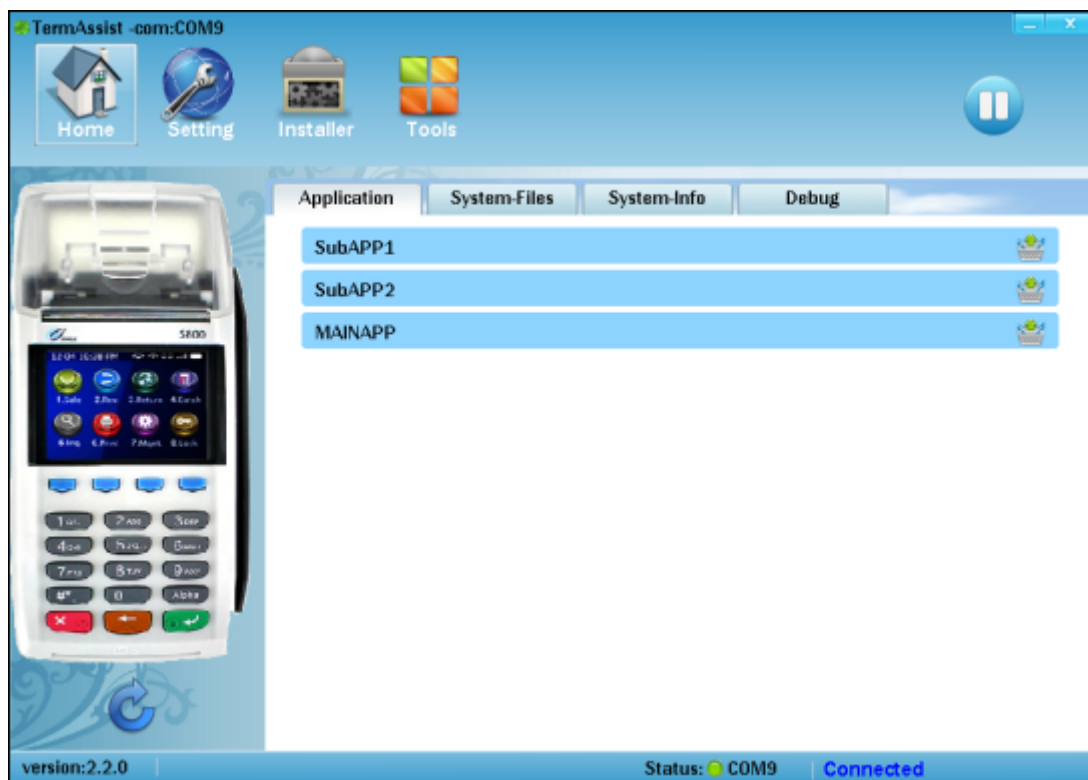


Figure 3.6 “Connected” is displayed in status bar

Then, the information of POS including the installed applications, fonts, system information of the terminals will be displayed on the *Home* page shown in Figure 3.7.



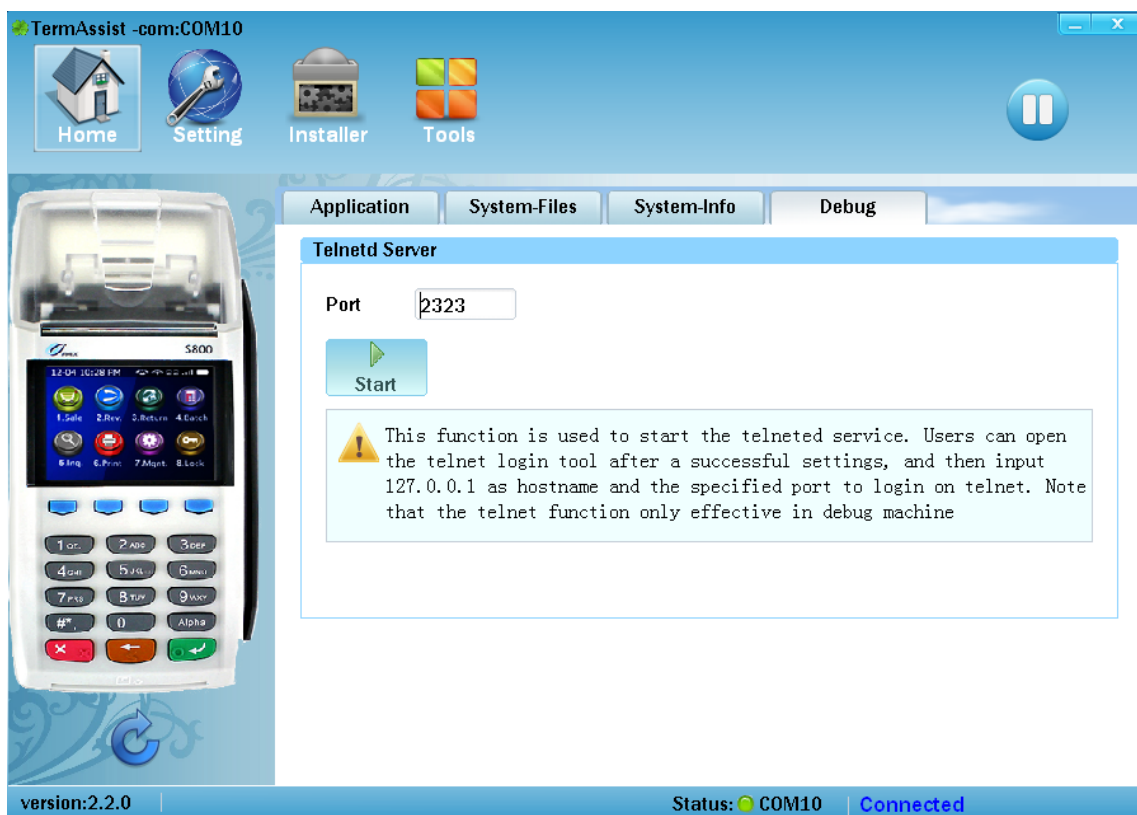
(1)



(2)



(3)



(4)

Figure 3.7 Information of POS displayed on Home page

The error message will be displayed in the status bar in the lower right corner of TermAssist interface shown in Figure3.8 if the connection is failed.



Figure 3.8 Error message of connection

### 3.2.2 Terminate the Connection


The connection between POS and PC will be terminated by clicking the *stop button* () on the upper right corner of TermAssist interface.



Figure 3.9 The connection is terminated

Then, all of the terminal information will be cleared; *Home* page and the status bar turn to disconnected status shown in Figure3.10.

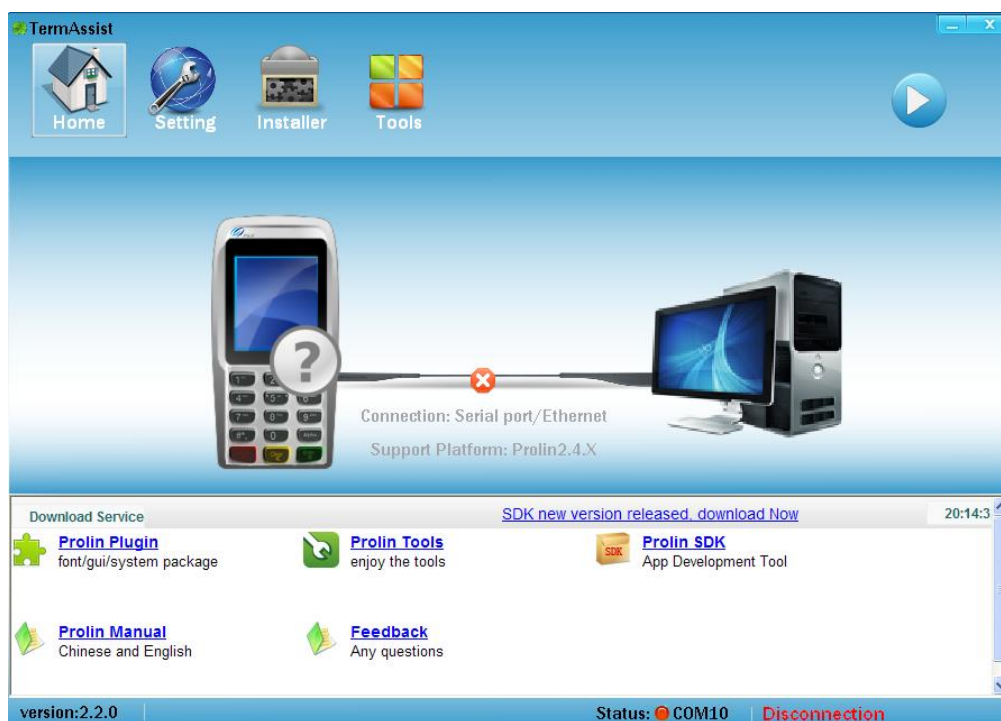


Figure 3.10 Home page of the disconnection status


## 3.3 Installation of Application, Font, PUK


TermAssist supports to install application packages, data files of the application, PUK files and font packages when the connection between POS and PC is activate which is based on XCB server. It is note that multiple files could be installed at the same time, and the installation sequence of various files is: PUK Files, application and font packages, data files.

**Note:**

1. The connection between POS and PC based on XCB server must be successful before installing application, font file, PUK and so on;
2. The usb driver named as “PosVcom\_2.5.0.rar” must be installed if the users install application with TermAssist at the first time, the installation steps of PosVcom is explained in corresponding documentation on the FTP.

### 3.3.1 Installation of Application, Font

The applications and font packages will be installed in the “Packages” menu of the “Installer” interface. The users could choose multiple files by clicking the button  or drag multiple files to the list of installation. The files with the correct format will be installed.

The connection between the POS and PC must be active firstly, then, the installation will success by clicking the download button ; A file will be deleted by clicking *delete button*



() , the file list of installation will be emptied by clicking “Clear All” button  .

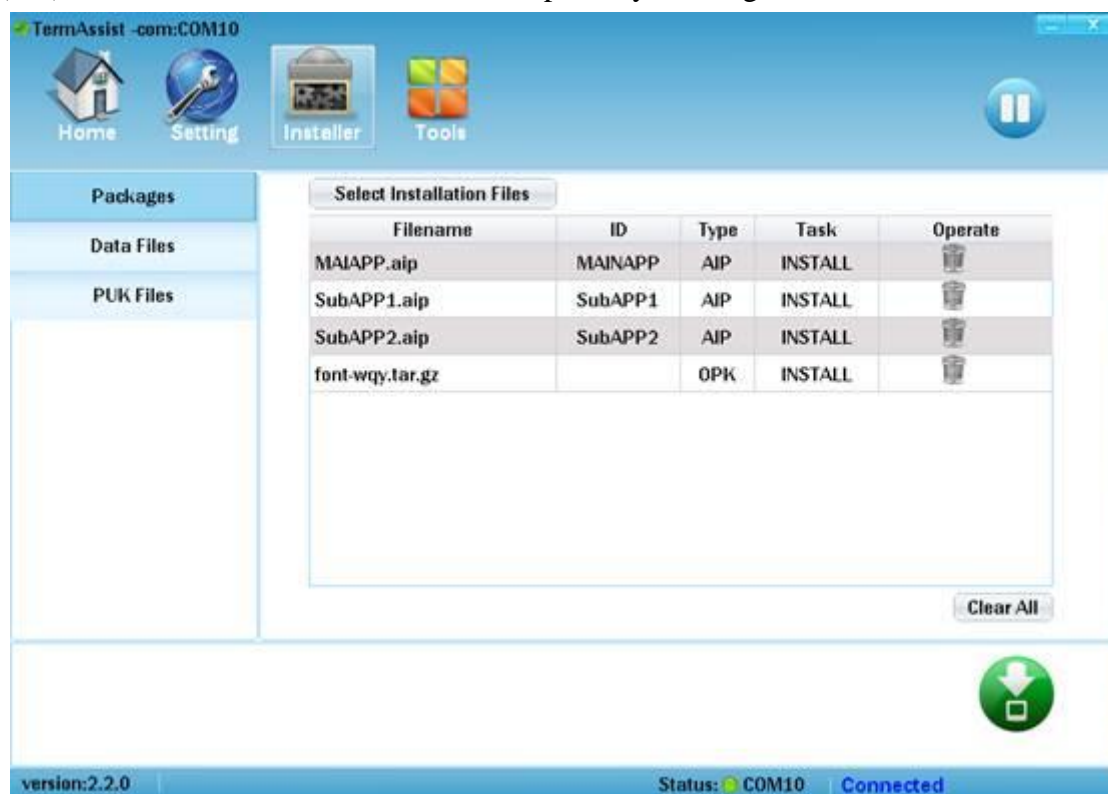


Figure 3.11 Installation of applications, font

The information of the file will be displayed in the left down corner of the interface and the “Please wait, Installing...” will be displayed in the right down corner when the files are being installed.

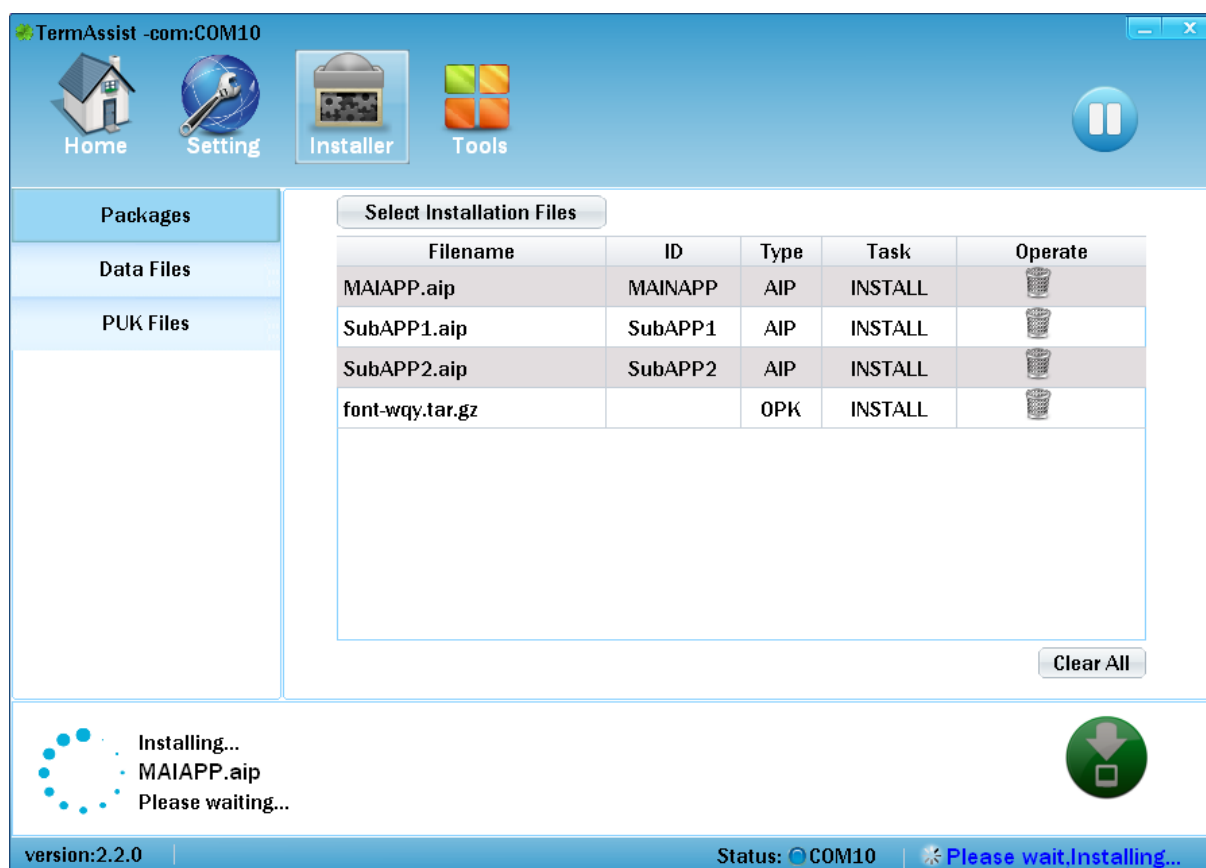


Figure 3.12 Applications, Font files are being installed

### 3.3.2 Installation of Data Files

The steps of installation of Data Files to the special application are shown as follow:

- 1) Choose an application ID (The application should have been installed on POS);
- 2) Select the data files by click or add the files to the list by dragging.

Multiple data files could be installed at the same time. The installation and delete are same as “Package” which is shown in 3.3.1 section.

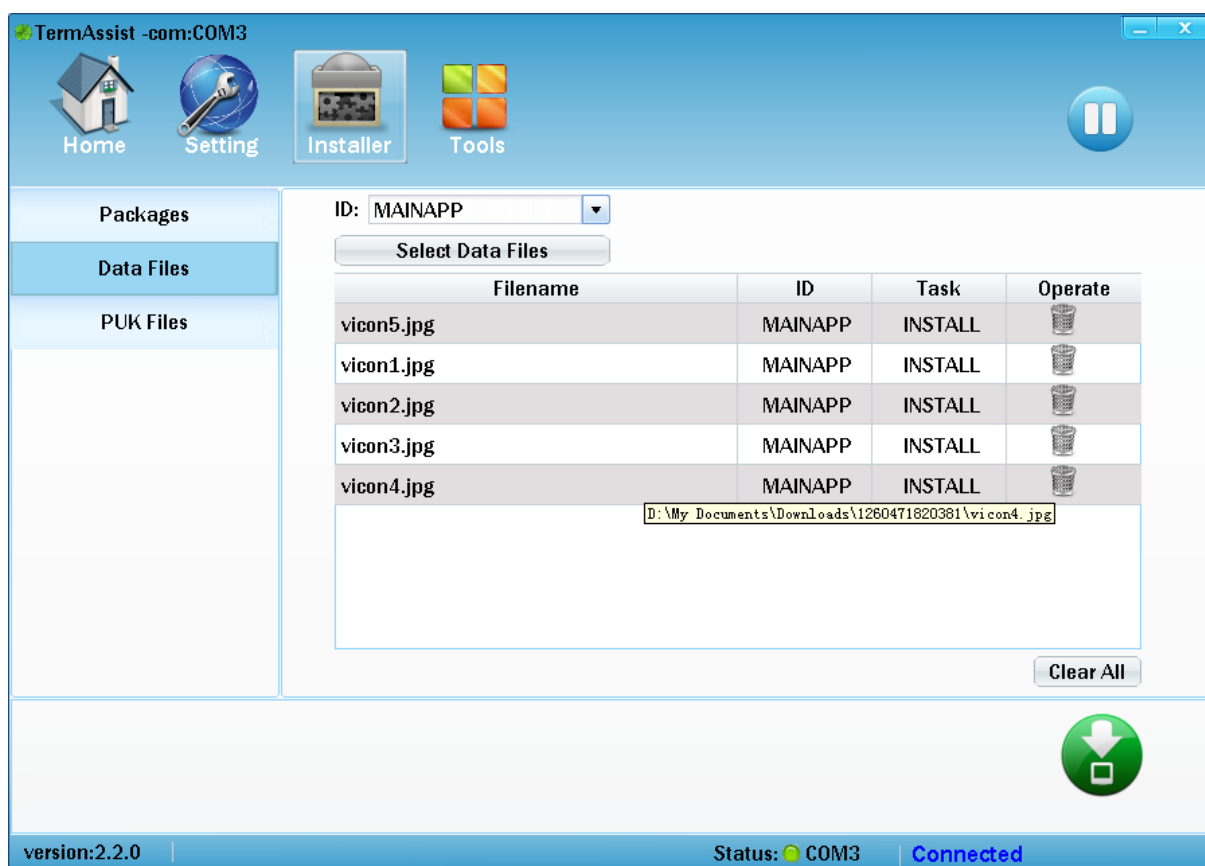


Figure 3.13 Installation of data files

### 3.3.3 Installation of PUK File

PUK file is an user public key file which is used to verify the legality of the applications. The steps of the installation are shown as follow:

- 1) Choose a slot (puk0~puk8) to store the PUK, and each slot can only store an unique file.
- 2) Select the PUK files by click or add the files to the list by dragging.

The installation and delete are same as “Package” which is shown in 3.3.1 section.



Figure 3.14 Installation of PUK Files

When a PUK file begin to be installed, a window will pop up and display the warning information ‘whether to install the PUK file?’, if “OK” is clicked, the PUK file will continue to be installed; otherwise the installation is terminated.

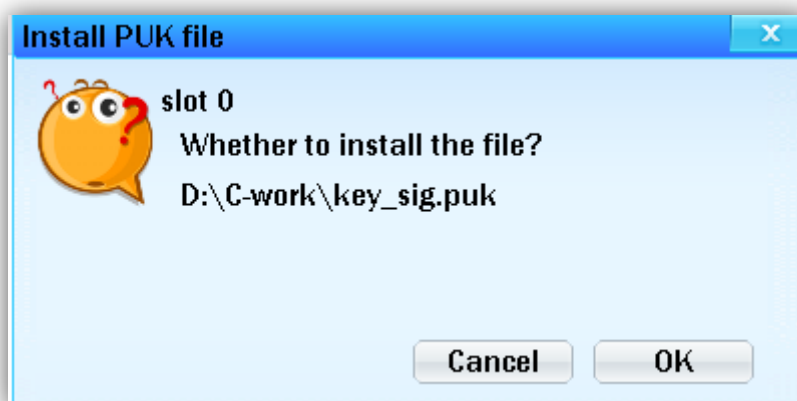



Figure 3.15 The warning windows while installing the PUK file

### 3.4 Uninstallation of Applications, Font, PUK

All of the installed files will be displayed on the *Home* page in TermAssist after the connection between POS and PC is active.

The installed applications will be displayed in “Application” menu, and it will be uninstalled by clicking *delete button* (  ), and the information of application will be displayed or hidden by clicking the blue rectangle with the name of installed applications.

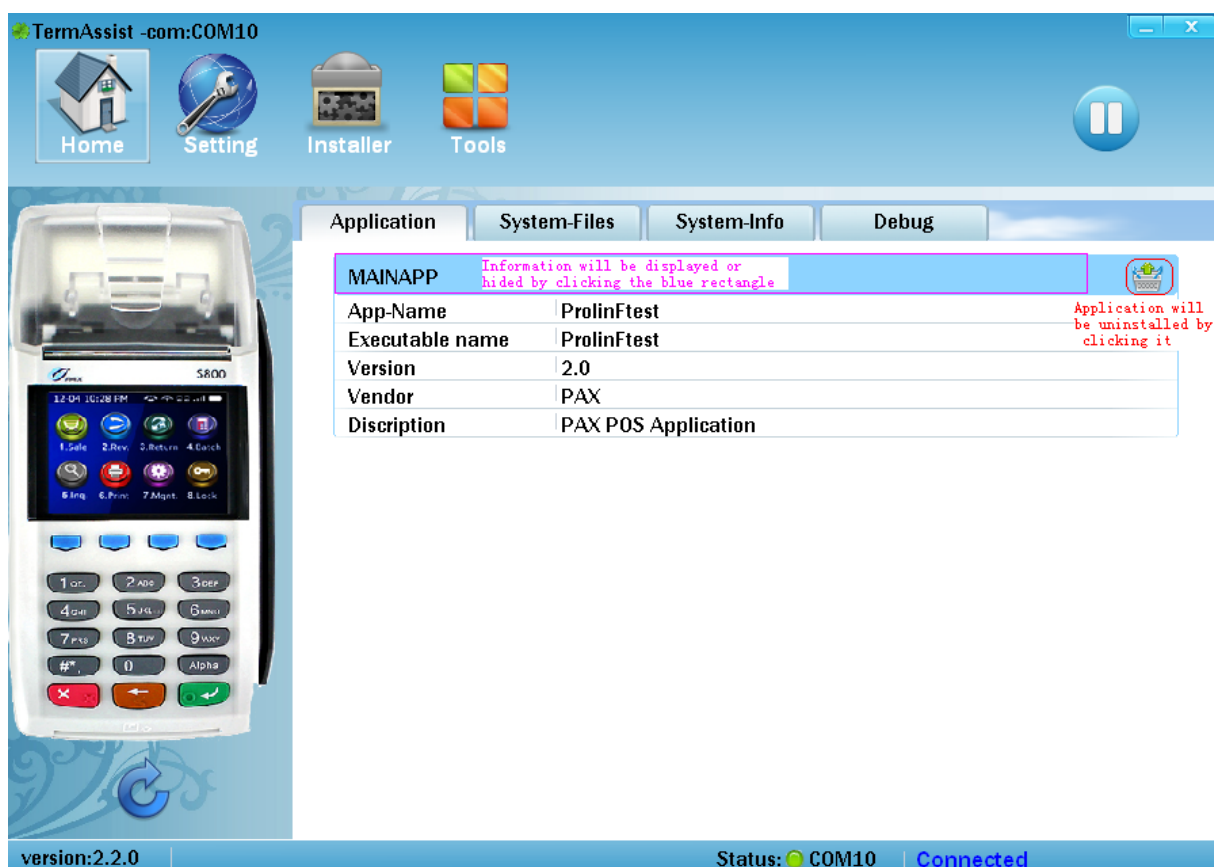



Figure 3.16 Uninstallation of applications

The installed font files and PUK files will be displayed in “System-Files” menu, and it will be uninstalled by clicking *delete button* (  ), and the information of the installed files will be displayed or hidden by clicking the blue rectangle with the name of installed files.

When a PUK file begin to be uninstalled, a window will pop up and display the warning information ‘Uninstall the PUK on this slot?’, if “OK” is clicked, the PUK file will be uninstalled; otherwise the uninstallation is terminated.

After uninstallation is finished, the list will refresh to the latest status automatically.



Figure 3.17 Uninstallation of font and PUK files

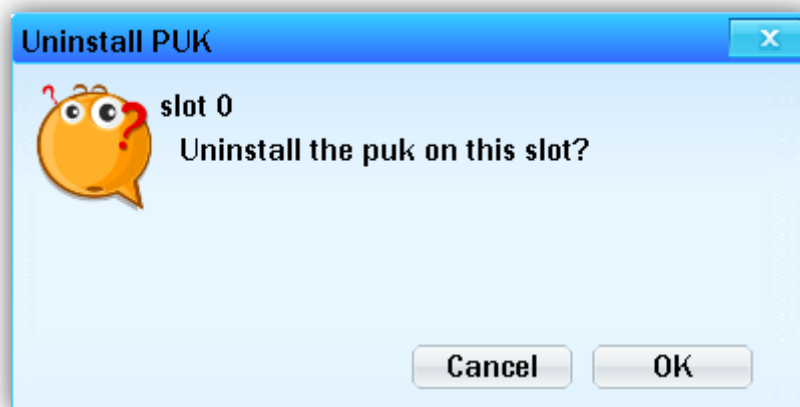


Figure 3.18 The warning window displays while uninstalling the PUK

### 3.5 Refresh

When the connection between POS and PC is active which is based on XCB, the tool will obtain the terminal information for once. Thereafter, the information won't be updated until


the next installation/uninstallation. In addition, the terminal information of POS could be refreshed by clicking the *refresh button* ().



Figure 3.19 Refresh the terminal information

# 4System Loader

---


SysLoader is on the “Tools” page of TermAssist, which is used to download and install Prolin system files by usb cable, and it requires that the version of u-boot installed in POS is 2.0.0 or higher.

**Note:**

1. Prolin system files could be downloaded and installed by SysLoader whether the connection between POS and PC is active or not which is based on XCB.
2. The usb driver named “Sxxx\_USB\_PC\_driver\_x86&x64.zip” must be installed in PC if Prolin system files are installed with SysLoader at the first time. The steps of installation of usb driver are as follows: begin to download firstly, then a dialog will be popped up on PC and select “No search, Choose the installation file”, then select “Install from Disk”, select “Browse files” and choose the file named “sxxx”.

## 4.1 SysLoader

TermAssist has supported downloads and installation of Prolin system files with version 2.1.1 or higher.

On the **Tools** interface of TermAssist, SysLoader will run by clicking the button . The running interface of SysLoader is shown in Figure 4.2.



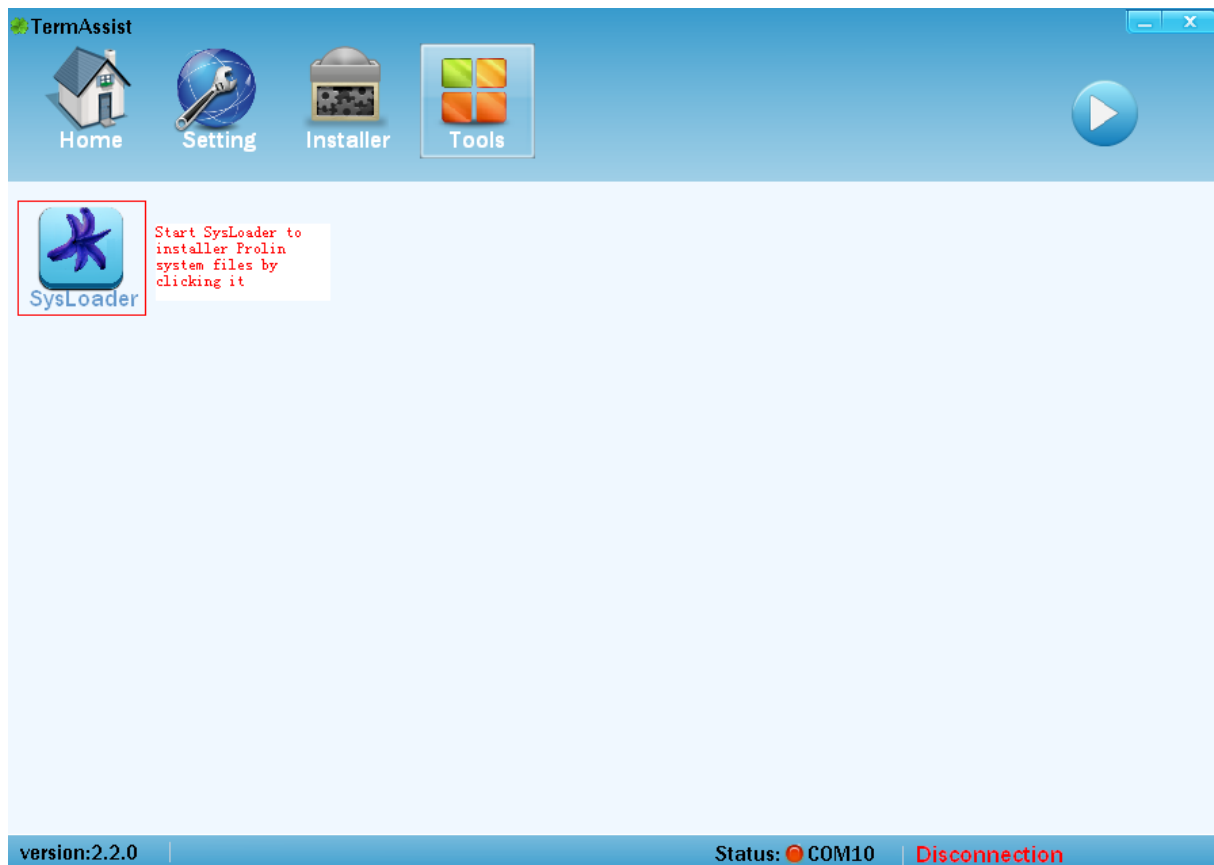


Figure 4.1 Startup SysLoader

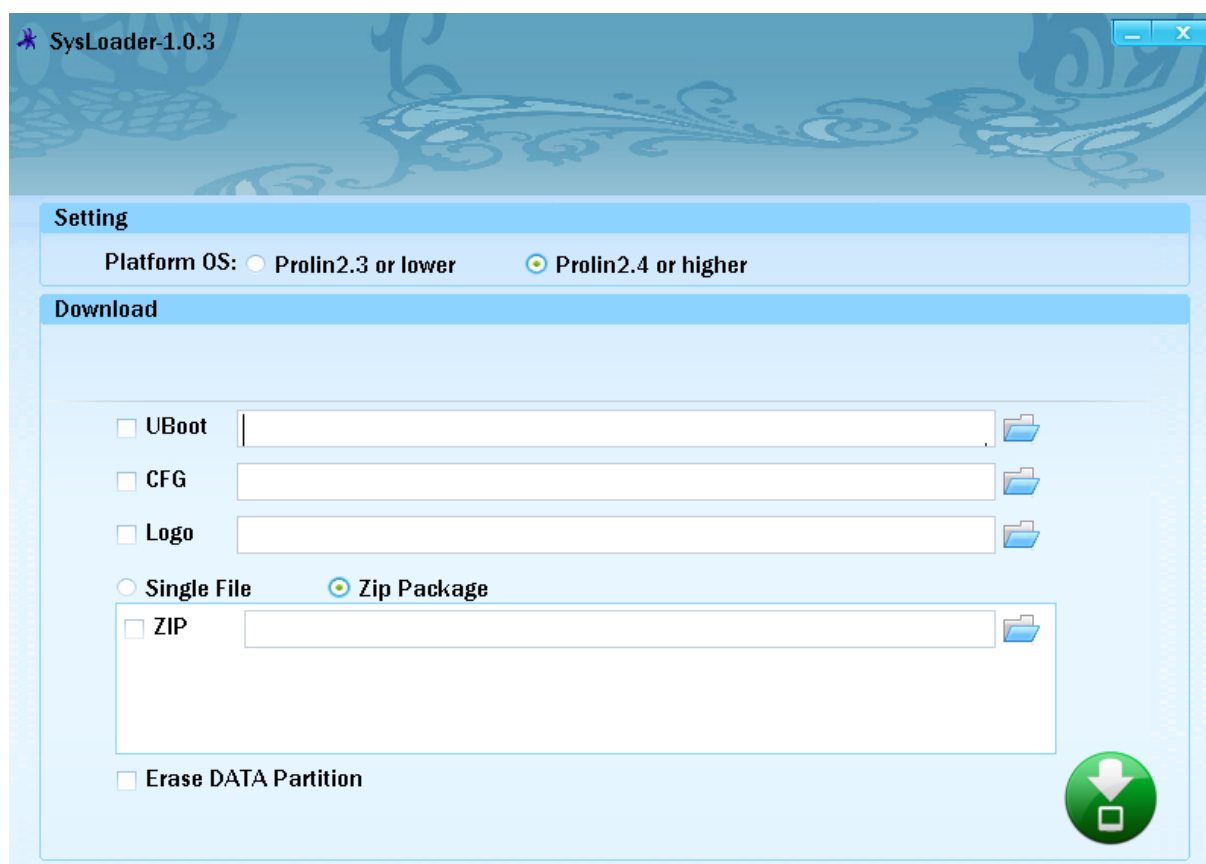



Figure 4.2 Interface of SysLoader

## 4.2 Steps of Installation by SysLoader

Prolin uboot, config, logo and OS files could be installed or updated by SysLoader tool with usb cable; the steps are shown as follow:

- 1) POS is power off and connected with PC by usb cable;
- 2) Choose the OS version, such as Prolin2.4 or higher; Choose uboot, config, logo, Prolin OS file showed in *Figure 4.3* (the type of files is shown in *Table 1*), Users can update a file only once, such as Prolin OS, then only choose “ZIP” and select or drag the Prolin OS file which will be installed; Then click the *download button*  to wait for downloading;
- 3) POS is power on with the download key is pressed down, hold on “clear” key for Sxxx, hold on the function key(upper left corner) for D200. The power key should be pressed down if POS has power key. Hold on the keys until the green download progress bar appear in the interface of SysLoader, then release the keys, “Prolin OS Update” displayed on the screen of POS showed in *Figure 4.4*;

- 4) When the download of Prolin system files are finished, S300/S800 is power on; the battery charging icon is displayed on the screen and press power key to power on for S900/D200.

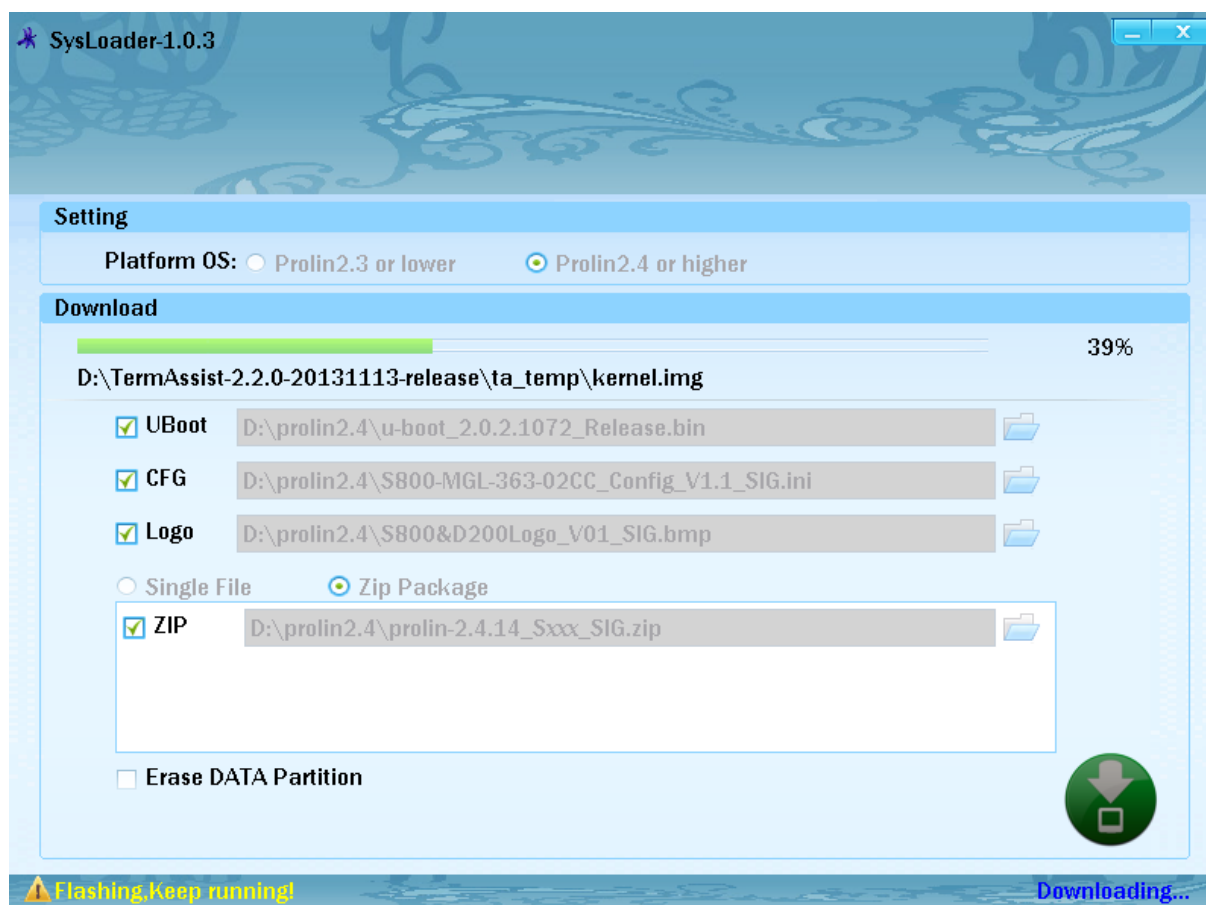


Figure 4.3 Installation of Prolin system files



Figure 4.4 Display on the screen of POS

In addition, Prolin2.4 or higher OS supports erasing data partition, which is only need for POS update from Monitor to Prolin system at the first time.

Table 1 Corresponding table of download file types

File type	Filename globbing and suffixes	OS version
Uboot	u-boot*.bin	Prolin2.3 or lower/Prolin2.4 or higher,
CFG	Sxxx-*.ini/factory_sxxx*.cfg	Prolin2.3 or lower/Prolin2.4 or higher,
Logo	Sxxx.bmp	Prolin2.3 or lower/Prolin2.4 or higher,
Kernel	Prolin-knl-*.bin(Prolin2.3 or lower version) kernel-*.img(Prolin2.4 or higher version)	Prolin2.3 or lower/Prolin2.4 or higher,
Sys	Prolin-sys-*.yaffs2	Prolin2.3 or lower
User	Prolin-usr-*.yaffs2	Prolin2.3 or lower
Ramdisk	ramdisk-*.img	Prolin2.4 or higher,
Base	base-*.img	Prolin2.4 or higher,
ZIP	Prolin2.3 or lower: the zip package includes Kernel/Sys/User type files  Prolin2.4 or higher: the zip package includes Kernel/Ramdisk/Base type files	Prolin2.3 or lower/Prolin2.4 or higher,

# Prolin TermAssist Operating Guide



Hong Kong  
Room 2416, 24/F, Sun Hung Kai Centre, 30 Harbour Road,  
Wanchai, Hong Kong  
Tel: +852-25888800  
Fax: +852-28023300

[www.pax.com.hk](http://www.pax.com.hk)

Shenzhen  
4/F, No.3 Building, Software Park, Second Central Science-Tech Road,  
High-Tech Industrial Park, Shenzhen, Guangdong 518057, P.R. China  
Tel: +86-755-86169630  
Fax: +86-755-86169634