

QOMO Interactive Hiteboards

Model	78" Interactive Hiteboard QWB200	88" Interactive Hiteboard QWB300
Technology	Infrared	Infrared
Touch System	Pen or Finger	Pen or Finger
Touchable Range	64" x 45" (1626mm x 1143mm)	71" x 51" (1803mm x 1295mm)
Resolution	4096 x 4096	4096 x 4096
Response Time	First dot:25ms,continuous dot:8ms	First dot:25ms,continuous dot:8ms
Cursor Speed	120 inches/second	120 inches/second
Coordinate Accuracy	3mm	2mm
Consumer Current		
Active Area Size (Diagonal)	< 100mA 78"	< 100mA 88"
Port	USB	USB
Dimensions	72" x 51" (1829mm x 1295mm)	78" x 59" (1981mm x 1499mm)
Net Weight	57 lbs (26kg)	66 lbs (30kg)
Software Drivers	Windows2000/XP	Windows2000/XP
Accessories	3 Interactive Pens, 1 Eraser, 1 Reaching Stick and Optional Floor Stand	3 Interactive Pens, 1 Eraser, 1 Reaching Stick and Optional Floor Stand
Operating Temp	-40°F to 95°F (5°C to 35°C)	-40°F to 95°F (5°C to 35°C)
Operating Humidity	30~90%	30~90%
Storage Temp	-40°F to 95°F (-40°C to 35°C)	-40°F to 95°F (-40°C to 35°C)
Storage Humidity	10~90%	10~90%

* Design and specifications are subject to change without notice.



QOMO Interactive Hiteboards QWB200/300



QOMO HiteVision, LLC
Toll Free: (866) 990-QOMO
Email: info@qomo.com

www.qomo.com

Copyright ©2008 QOMO HiteVision, LLC. All rights reserved. This document may not be copied in any form without written permission from QOMO HiteVision, LLC. Information in this document subject to change without notice.



QOMO Interactive Hiteboards are changing the way many teachers and meeting coordinators approach their classes. Perfect for classrooms, conference rooms, trade shows, and anywhere there is a need for an interactive display, with QOMO's Interactive Hiteboard, instruction really is at your fingertips.

QOMO Interactive Hiteboard Features

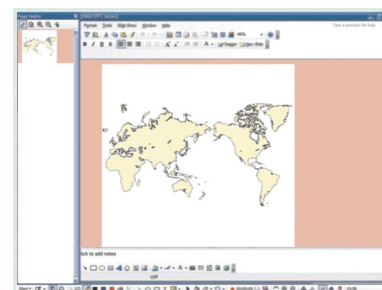
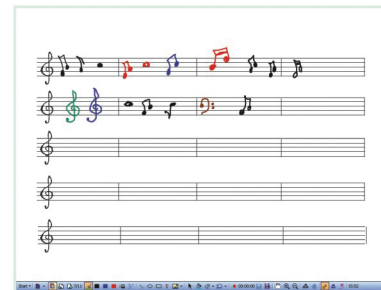
Touch System Using advanced IR technology, the QOMO Interactive Hiteboard recognizes the pen or will recognize your finger and accurately track you anywhere on the screen.



Surface The surface of the QOMO board is durable and built to withstand everyday use. In addition to providing a projection surface with minimal glare, the QOMO surface cleans up easily.



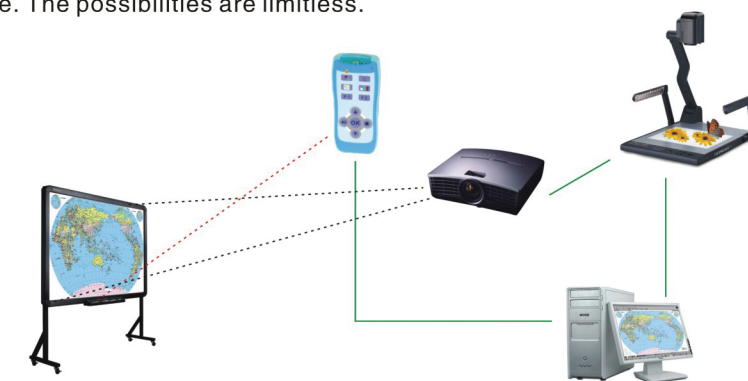
Pen Tray Select among three different pens with unlimited color choices. If using a pen seems like a hassle, just remove the pen from the tray and draw with your fingertip instead.



QOMO Interactive Hiteboard-Integration and Interaction

As the only whiteboard designed to interact seamlessly with a complete line of presentation products, the QOMO Interactive Hiteboard has a distinct advantage over its competition. Using QOMO's intuitive FLOW! Software, the QOMO Hiteboard allows seamless integration with desktop and portable document cameras, writing panels, the QClick Audience Response system, as well as the QOMO Prodigy wireless RF tablet!

The QOMO Hiteboard allows you to capture images live from your document camera, and then annotate, add notes, and save into your favorite files. Used in combination with the QOMO QClick Audience Response system, you can even quiz your audience. The possibilities are limitless.



Hiteboard powered by Flow! Software

- Designed for classrooms, distance learning and conferencing system applications and integration
- Vector image format takes less storage space and makes file transferring easier and faster
- Pen type, line width and color variations made to fit different user preferences
- Supports real time on screen editing
- Graphic tools allow you to define background selection and input custom graphics and mouse
- Versatile writing tool can simulate a paintbrush or be used as a desktop mouse
- Writing file allows for easy conversion to many other formats such as: PDF, PPT, HTML and a variety of image files, etc.
- Supports third party software applications
- Create, edit and annotate over live movies
- Free online training and upgrades
- Integrate seamlessly with all QOMO desktop and portable document cameras, enabling you to annotate over non computer based images such as paper, transparencies, lab specimens or objects directly on the QOMO Hiteboard
- Hot Keys on the board's surface allow for quick and easy access to the most widely functions

