



User manual  
Guide de l'utilisateur  
Manual de usuario

---

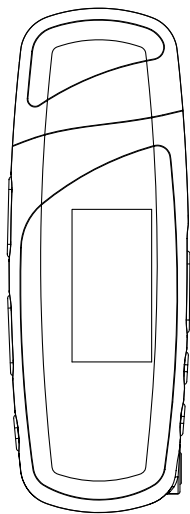
TH1100

TH1101

TH1102

TC1101

TC1102



It is important to read this instruction book prior to using your new product for the first time.

Nous vous recommandons de lire ce manuel d'instructions avant d'utiliser votre nouveau produit pour la première fois.

Es importante leer este manual antes de usar por vez primera su equipo.

# Contents

Contents .....	1	General Controls .....	12
FCC Information .....	2	Before you Begin .....	12
For Your Records .....	2	Overview .....	12
Manufacturer/Responsible Party .....	2	Playback Display .....	13
Product Registration .....	3	Navigation Menus .....	13
Service Information .....	3	Selecting What You Want to Play .....	13
Technical Specification .....	3		
Electrical Consumption .....	3	Listening and Recording .....	14
End User License Agreement ....	4	Music Playback .....	14
		Audiobooks Playback .....	14
Before You Begin .....	7	Voice Recording .....	14
Dear RCA Customer .....	7	Playback Recorded Files .....	15
Unpacking Your Player .....	7	Deleting Recorded Files .....	15
Computer System Requirements .....	7		
Secure Music Download Requirements .....	7	My Selections .....	15
Warning .....	7	Adding Files to My Selections .....	15
Caution .....	7	Playing My Selections .....	15
Headset Safety .....	8	Clearing My Selections .....	15
Caution While Driving .....	8		
Back up your data .....	8	Player's Menus .....	16
Inserting a micro SD card(Tansflash card) .....	8	Accessing the Player's Menus .....	16
Software Setup .....	8	Navigation and Selection .....	16
Inserting the Included CD into CD Drive .....	8	Shuffle .....	16
		Repeat .....	16
Connecting to the Computer ....	9	DSP .....	16
Connecting the Player to the Computer .....	9	Skipping .....	16
Inserting Battery into the Player .....	9	Clear MySel .....	16
Important Battery Information .....	9	Rec Dur .....	16
		Settings .....	17
Transferring Files to the Player ...	10	System Info .....	17
Transferring Files to the Player .....	10		
Transferring Files via Yahoo! Music Jukebox™ (Windows® XP or higher only) .....	10	Additional Information .....	17
Transferring Files via Windows Explorer (Drag-and-drop) .....	11	Tips and Troubleshooting .....	17
Disconnecting Your Player from the Computer 11		Check for Updates .....	18
		Frequently Asked Questions .....	18
		Specifications .....	18
		Hardware .....	18
		USB Drive .....	18
		Software .....	18
		Limited Warranty (U.S.) .....	19
		Limited Warranty (Canada) ....	20

# FCC Information

## FCC Information

This device complies with part 15 of the FCC rules. Operation is subject to the following two conditions: (1) This device may not cause harmful interference, and (2) This device must accept any interference received including interference which may cause undesired operation.

This equipment has been tested and found to comply with the limits for a Class B digital device, pursuant to Part 15 of the FCC Rules. These limits are designed to provide reasonable protection against harmful interference in a residential installation. This equipment generates, uses and can radiate radio frequency energy and, if not installed and used in accordance with the instructions, may cause harmful interference to radio communications. However, there is no guarantee that interference will not occur in a particular installation.

If this equipment does cause harmful interference to radio or television reception, which can be determined by turning the equipment off and on, the user is encouraged to try to correct the interference by one or more of the following measures:

- Reorient or relocate the receiving antenna.
- Increase the separation between the equipment and receiver.
- Connect the equipment into an outlet on a circuit different from that to which the receiver is connected.
- Consult the dealer or an experienced radio / TV technician for help.

In accordance with FCC requirements, changes or modifications not expressly approved by Thomson Inc. could void the user's authority to operate this product.

This Class B digital apparatus complies with Canadian ICES-003.

Cet appareil numérique de la class B est conforme à la norme du NMB-003 du Canada



RCA  
TH1100



RCA  
TH1101



RCA  
TH1102



RCA  
TC1101



RCA  
TC1102

## For Your Records

Keep your sales receipt for proof of purchase to obtain warranty parts and service.

In the event that service should be required, you may need both the model number and the serial number. In the space below, record the date and place of purchase, and the serial number:

Model No.

Date of Purchase

Place of Purchase

Serial No.

## Manufacturer/Responsible Party

Thomson, Inc.

P.O. Box 1976

Indianapolis, IN 46206-1976

1-866-449-7712

# Important Information

## Product Registration

Please fill out the product registration card and return it immediately. Returning this card allows us to contact you if needed. You can go to [www.rcaaudiovideo.com](http://www.rcaaudiovideo.com) for online registration as well.

## Service Information

This product should be serviced only by those specially trained in appropriate servicing techniques. For instructions on how to obtain service, refer to the warranty included in this Guide.

Have a Blast- Just Not in Your Eardrums

Make sure you turn down the volume on the unit before you put on headphones. Increase the volume to the desired level only after headphones are in place.



## Technical Specification

Product: Digital Audio Player

Brand: RCA

Model: TH1100, TH1101, TH1102, TC1101, TC1102

## Electrical Consumption

1 x AAA battery

### IMPORTER

Comercializadora Thomson de México, S.A. de C.V.

Álvaro Obregón No. 151. Piso 13.

Col. Roma. Delegación Cuauhtémoc

C.P. 06700. México, D.F.

Telefono: 52-55-11-020360

RFC: CTM-980723-KS5

This unit may temporarily cease to function if subjected to electrostatic disturbance. To resume normal operation, you can reset it by removing and re-installing the battery.

Illustrations contained within this publication are for representation only and subject to change.

The descriptions and characteristics given in this document are given as a general indication and not as a guarantee. In order to provide the highest quality product possible, we reserve the right to make any improvement or modification without prior notice. The English version serves as the final reference on all products and operational details should any discrepancies arise in other languages.

EN

# End User License Agreement

IMPORTANT: READ CAREFULLY BEFORE DOWNLOADING OR INSTALLING THIS SOFTWARE!

EN

THIS END USER LICENSE AGREEMENT (THIS "EULA") IS A LEGAL AGREEMENT BETWEEN YOU AND THOMSON INC., OR ANY THOMSON GROUP ENTITY, AS DEFINED BELOW (COLLECTIVELY "THOMSON ENTITY"), FOR THE RCA OR THOMSON BRANDED PORTABLE DIGITAL AUDIO/VIDEO DEVICE APPLICATION/DRIVER SOFTWARE PROGRAM AND ASSOCIATED DOCUMENTATION, IF ANY (COLLECTIVELY, THE "PROGRAM"). THIS EULA CONTAINS IMPORTANT LEGAL LIMITATIONS, RESTRICTIONS AND DISCLAIMERS, AND ALSO SPECIFIES THE DURATION OF YOUR LICENSE. BY INSTALLING THE PROGRAM OR CLICKING ON THE ACCEPTANCE BUTTON OF THE PROGRAM, COPYING OR OTHERWISE USING THE PROGRAM, YOU ACKNOWLEDGE AND AGREE THAT YOU HAVE READ THIS EULA, UNDERSTAND IT, AND AGREE TO BE BOUND BY ITS TERMS AND CONDITIONS. YOU MAY USE THE PROGRAM ONLY IN ACCORDANCE WITH THIS EULA, AND ANY SUCH USE IS HEREBY UNDERSTOOD TO BE CONDITIONAL UPON YOUR SPECIFIC AGREEMENT TO THE UNMODIFIED TERMS SET FORTH HEREIN. IF YOU DO NOT AGREE WITH ALL OF THE TERMS OF THIS EULA, CLICK ON THE REJECTION BUTTON AND/OR DO NOT INSTALL THE PROGRAM AND/OR DO NOT USE THE PROGRAM.

## 1. LICENSE

- (a) Under this EULA, you are granted a license (i) to use the Program on a single workstation, and (ii) to make one (1) copy of the Program into any machine-readable form for backup of the Program, provided the copy contains all of the original Program's proprietary notices.
- (b) You may transfer the Program and license to another party only as a part of the Thomson/RCA branded Portable Digital Audio/Video Device ("A/V Device"), and only if the other party agrees to accept the terms and conditions of this EULA. If you transfer the Program, you must at the same time either transfer all copies to the same party or destroy any copies not transferred.
- (c) The terms of this EULA will govern any software upgrades or updates provided by THOMSON Entity that replace and/or supplement the original Program, unless such upgrade or update is accompanied by separate license terms and conditions in which case the terms of that separate license will govern. You acknowledge and agree that THOMSON Entity may automatically download

upgrades or updates to the Program software to your computer in order to update, enhance, and/or further develop the Program.

## 2. LICENSE RESTRICTIONS

- (a) Except for the licenses expressly granted to you in this EULA, no other licenses or rights are granted or implied.
- (b) You may not (i) make the Program available over a network where it could be used by multiple computers at the same time; (ii) modify, translate, reverse engineer, decompile, disassemble (except to the extent that this restriction is expressly prohibited by law), or create derivative works based upon the Program; or (iii) copy the Program, except as expressly permitted herein. You agree that you shall only use the Program in a manner that complies with all applicable laws in the jurisdictions in which you use the Program, including, but not limited to, applicable restrictions concerning copyright and other intellectual property rights.
- (c) The Program may contain pre-release code that does not perform at the level of a final code release. In such case, the Program may not operate properly. Updated versions of the Program may be downloaded from [www.rcaaudiovideo.com/digitalaudiosupport](http://www.rcaaudiovideo.com/digitalaudiosupport).
- (d) THOMSON Entity is not obligated to provide support services for the Program.
- (e) The Program is provided with "RESTRICTED RIGHTS". Use, duplication, or disclosure by the U.S. Government is subject to restrictions as set forth in subparagraph (c)(1)(ii) of DFARS 252.227-7013, or FAR 52.227-19, or in FAR 52.227-14 Alt. III, as applicable.

## 3. TERM AND TERMINATION

- (a) Your license is effective on the date you accept this EULA and remains in effect until this EULA is terminated by either party.
- (b) You may terminate this EULA and the associated license, without any notice or delay, by destroying or permanently erasing the Program and all copies thereof.
- (c) If you fail to comply with any of the terms of this EULA, in whole or part, your license will automatically terminate without notice from THOMSON Entity.
- (d) Upon termination of this EULA and your associated license, you shall cease all use of the Program and

# End User License Agreement

destroy or permanently erase the Program and all full or partial copies thereof.

## 4. WARRANTY DISCLAIMER

THE PROGRAM IS PROVIDED "AS IS" WITHOUT WARRANTY OF ANY KIND, EITHER EXPRESSED OR IMPLIED, INCLUDING, BUT NOT LIMITED TO THE IMPLIED WARRANTIES OF MERCHANTABILITY, FITNESS FOR A PARTICULAR PURPOSE, TITLE OR NON-INFRINGEMENT. THE ENTIRE RISK AS TO THE QUALITY AND PERFORMANCE OF THE PROGRAM IS WITH YOU. SHOULD THE PROGRAM PROVE DEFECTIVE, YOU (AND NOT THOMSON ENTITY, ITS SUPPLIERS, OR ITS DEALERS) ASSUME THE ENTIRE COST FOR ALL NECESSARY REPAIR OR CORRECTION.

This exclusion of warranty may not be allowed under some applicable laws. As a result, the above exclusion may not apply to you, and you may have other rights depending on the law that applies to you.

## 5. OWNERSHIP RIGHTS

All title and intellectual property rights in and to the Program and any copies thereof are owned by THOMSON Entity or its suppliers. All title and intellectual property rights in and to the content which may be accessed through use of the Program is the property of the respective content owner and may be protected by applicable copyright or other intellectual property laws and treaties. This license grants you no rights to use such content.

## 6. LIMITATION OF LIABILITY

(a) TO THE MAXIMUM EXTENT PERMITTED BY APPLICABLE LAW, IN NO EVENT SHALL THOMSON ENTITY, OR ITS DEALERS BE LIABLE FOR ANY SPECIAL, INCIDENTAL, INDIRECT, OR CONSEQUENTIAL DAMAGES WHATSOEVER (INCLUDING, WITHOUT LIMITATION, DAMAGES FOR LOSS OF PROFITS, BUSINESS INTERRUPTION, CORRUPTION OF FILES, LOSS OF BUSINESS INFORMATION, OR ANY OTHER PECUNIARY LOSS) REGARDLESS OF CAUSE OR FORM OF ACTION, INCLUDING CONTRACT, TORT, OR NEGLIGENCE, ARISING OUT OF YOUR USE OF OR INABILITY TO USE THE PROGRAM, EVEN IF THOMSON ENTITY HAS BEEN ADVISED OF THE POSSIBILITY OF SUCH DAMAGES. BECAUSE SOME STATES AND JURISDICTIONS DO NOT ALLOW THE EXCLUSION OR LIMITATION OF LIABILITY OF CONSEQUENTIAL OR INCIDENTAL DAMAGES, THE

ABOVE LIMITATION MAY NOT APPLY TO YOU.

(b) YOU ASSUME RESPONSIBILITY FOR THE SELECTION OF THE APPROPRIATE PROGRAM TO ACHIEVE YOUR INTENDED RESULTS, AND FOR THE INSTALLATION, USE, AND RESULTS OBTAINED.

## 7. WINDOWS MEDIA™

The software embedded within your A/V Device (the "Device Firmware") contains software licensed from Microsoft that enables you to play Windows Media Audio (WMA) files ("WMA Software"). The WMA Software is licensed to you for use with your A/V Device under the following conditions. By installing and using this version of the Device Firmware, you are agreeing to these conditions. IF YOU DO NOT AGREE TO THE END USER CONDITIONS OF THIS SECTION 7, DO NOT INSTALL OR USE THIS VERSION OF THE DEVICE FIRMWARE.

The WMA Software is protected by copyright and other intellectual property laws. This protection also extends to documentation for the WMA Software, whether in written or electronic form.

**GRANT OF LICENSE.** The WMA Software is only licensed to you as follows:

You may use this version of the Device Firmware containing the WMA Software only as such use relates to your A/V Device.

You may not reverse engineer, decompile, or disassemble the WMA Software, except and only to the extent that such activity is expressly permitted by applicable law. You may transfer your right to use the Device Firmware only as part of a sale or transfer of your A/V Device, on the condition that the recipient agrees to the conditions set forth herein. If the version of the Device Firmware that you are transferring is an upgrade, you must also transfer all prior versions of the Device Firmware that you have which include the WMA Software.

**MICROSOFT IS NOT PROVIDING ANY WARRANTY OF ANY KIND TO YOU FOR THE WMA SOFTWARE, AND MICROSOFT MAKES NO REPRESENTATION CONCERNING THE OPERABILITY OF THE WMA SOFTWARE.**

The WMA Software is of U.S. origin. Any export of this version of the Device Firmware must comply with all applicable international and national laws, including the U.S. Export Administration Regulations, that apply to the WMA Software incorporated in the Device Firmware. Content providers are using the digital rights management technology for Windows Media contained

# End User License Agreement

EN

in your A/V Device ("WM-DRM") to protect the integrity of their content ("Secure Content") so that their intellectual property, including copyrights, in such content is not misappropriated. Your A/V Device uses WM-DRM software to play Secure Content ("WM-DRM Software"). If the security of the WM-DRM Software in your A/V Device has been compromised, owners of Secure Content ("Secure Content Owners") may request that Microsoft revoke the WM-DRM Software's right to acquire new licenses to copy, display, and/or play Secure Content. Revocation does not alter the WM-DRM Software's ability to play unprotected content. A list of revoked WM-DRM Software is sent to your A/V Device whenever you download a license for Secure Content from the Internet or from a computer. Microsoft may, in conjunction with such license, also download revocation lists onto your A/V Device on behalf of Secure Content Owners.

## 8. THIRD PARTY SOFTWARE

ANY THIRD PARTY SOFTWARE THAT MAY BE PROVIDED WITH THE PROGRAM IS INCLUDED FOR USE AT YOUR OPTION. IF YOU CHOOSE TO USE SUCH THIRD PARTY SOFTWARE, THEN SUCH USE SHALL BE GOVERNED BY SUCH THIRD PARTY'S LICENSE AGREEMENT, AN ELECTRONIC COPY OF WHICH WILL BE INSTALLED IN THE APPROPRIATE FOLDER ON YOUR COMPUTER UPON INSTALLATION OF THE SOFTWARE. THOMSON ENTITY IS NOT RESPONSIBLE FOR ANY THIRD PARTY'S SOFTWARE AND SHALL HAVE NO LIABILITY FOR YOUR USE OF THIRD PARTY SOFTWARE.

## 9. GOVERNING LAW

If you acquired this A/V Device in the United States, this EULA shall be governed and construed in accordance with the laws of the State of Indiana, U.S.A. without regard to its conflict of laws principles. If you acquired this A/V Device outside the United States or the European Union, then local law may apply.

## 10. GENERAL TERMS

This EULA can only be modified by a written agreement signed by you and THOMSON Entity, and changes from the terms and conditions of this EULA made in any other manner will be of no effect. If any portion of this EULA shall be held invalid, illegal, or unenforceable, the validity, legality, and enforceability of the remainder of the Agreement shall not in any way be affected or impaired thereby. This EULA is the complete and exclusive statement of the agreement between you and

THOMSON Entity, which supersedes all proposals or prior agreements, oral or written, and all other communications between you and THOMSON Entity, relating to the subject matter of this hereof.

"THOMSON Group Entity" when used in this EULA shall mean any person, corporation, or other organization, domestic or foreign, including but not limited to subsidiaries, that is directly or indirectly controlled by Thomson S.A. For purposes of this definition only, the term "control" means the possession of the power to direct or cause the direction of the management and policies of an entity, whether by ownership of voting stock or partnership interest, by contract, or otherwise, including direct or indirect ownership of more than fifty percent (50%) of the voting interest in the entity in question.

## Before You Begin

Dear RCA Customer,

**Thank you for purchasing the Player. This product will play open mp3 and Windows Media audio (WMA) content as well as content purchased from most online music download services.**

**After purchasing and downloading music to your PC, you are now ready to move content to your player. To transfer the music, you must use Windows Media Player or the application recommended by the online music download service.**

**(Note: Services and applications must be Windows Media audio-compliant and support Digital Rights Management.)**

### Unpacking Your Player

Your player came with everything you need to make music portable — all of the items shown below should have been packed in the box with your player.



RCA Player



Music Management Software CD



USB extension cable: Plug one end into the USB jack on your player, and plug the other end into your computer's USB port.



Earphones



AAA battery x 1

### Computer System Requirements

- Pentium III 500MHz or higher recommended
- Windows 2000 (Service Pack 3) or Windows XP (Service Pack 1 or higher)
- Internet Explorer 4.0 or higher with Internet access
- 150MB or more free hard disk space for the software
- 128MB RAM (256MB recommended)
- CD drive capable of digital audio extraction
- USB port (2.0 recommended)
- Installed sound card
- Installed 16-bit color video card

### Secure Music Download Requirements

- Windows XP (Service Pack 1 or higher)
- Internet Explorer 6.0 or higher with Internet access
- Windows Media Player 10 or higher
- Yahoo! Music Jukebox (Included in the CD)

### Warning

Use of this player is for your personal use only. Unauthorized recording or duplication of copyrighted material may infringe upon the rights of third parties and may be contrary to copyright laws.

### Caution

- Keep player out of direct sunlight. Exposure to direct sunlight or extreme heat (such as inside a parked car) may cause damage or malfunction.
- Do not expose to rain or moisture.



## Before You Begin

EN

### Headset safety



Have a Blast- Just Not in Your Eardrums

Make sure you turn down the volume on the unit before you put on headphones. Increase the volume to the desired level only after headphones are in place.

- Do not play your headset at a high volume. Hearing experts warn against extended high-volume play.
- If you experience a ringing in your ears, reduce volume or discontinue use.
- You should use extreme caution or temporarily discontinue use in potentially hazardous situations.

Even if your headset is an open-air type designed to let you hear outside sounds, don't turn up the volume so high that you are unable to hear what is around you.

### Caution While Driving

Use of headphones while operating an automobile or moving vehicle is not recommended and is unlawful in some states and areas. Be careful and attentive on the road. Stop operation of the player if you find it disruptive or distracting while driving.

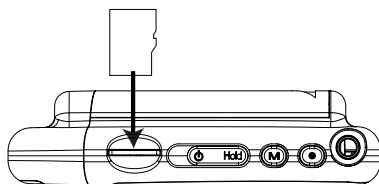
### Back up your data

As with any portable player, you must back up the drive regularly. RCA and Thomson are not responsible for lost data.

### Inserting a micro SD card (Tansflash card)

The player has built-in flash memory. To extend the playtime, you can use the optional micro SD or Tansflash card slot.

1. Make sure the player is turned off. Insert a micro SD card into the micro SD card slot on the top of the player until a "click" sound is heard as illustrated below.
2. To remove the card, turn the player off and press the top to the micro SD card until a "click" sound is heard.



## Software Setup

The Music Management CD that comes with your player contains all of the necessary software components you need to make your player work properly.

These components enable you to transfer files from your computer to your player.

### Inserting the Included CD into CD Drive

1. Turn on your computer and place the Music Management CD that came with your player into your computer.

**IMPORTANT: Don't connect the USB cable to the PC or the player before or during the CD installation.**

2. If the setup screen does not appear, double-click My Computer, double click your CD drive icon, and double click Install to run the installer. Refer to page 10 "Transferring Files to the Player" for details of transferring files.



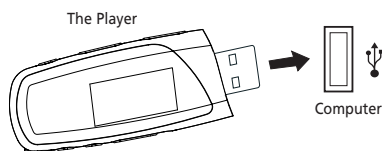
#### Note:

- The Music Management CD also contains Yahoo! Music Jukebox that can help transfer music content to your player. Please refer to the section on your installed software for detailed operations.
- Refer to "Transferring Files to the Player" on page 10 for details.

# Connecting to the Computer

## Connecting the Player to the Computer

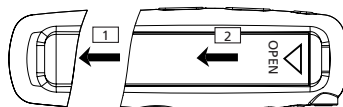
Connect the USB jack of the player to your computer after you remove the cap of the USB jack. You may use the provided extension cable if necessary. The player will turn on automatically and display "USB connected" on the display. The player will appear as a drive letter on your computer, a Mass Storage Class (MSC) device, and behave as a detachable drive for file transfer in one or both directions.



### Note:

- It might take several seconds for the player to be detected. Click Refresh in My Computer or Windows Explorer to make sure the player has been detected.
- The player is capable of transferring files at USB 2.0. If USB 2.0 port is available on your computer, use it to connect to your player. The player is still backward compatible with the older USB 1.1 ports. However, you will not be able to take full advantage of the potential speed increase.

## Inserting Battery into the Player



1. Remove the cap of the USB jack of the player.
2. Remove the battery door by applying thumb pressure. Slide the battery door in the direction of the arrow, then lift the battery door out and off the cabinet.
3. Insert a "AAA/LR03/UM4" battery with polarities corresponding to the indications on the compartment.
4. Close the battery door by sliding in the opposite direction of the arrow. Replace the cap of the USB jack.

## Important Battery Information

- When storing the unit, be sure to remove the battery because they may leak and damage the unit.
- Battery may leak electrolyte if inserted incorrectly, if disposed of in fire, or if an attempt is made to charge a battery not intended to be recharged.
- Discard leaking battery immediately.
- A Leaking battery may cause skin burns or other personal injury.
- Dispose of battery, according to federal, state and local regulations.
- Dispose of used battery properly. Keep away from children. Do not disassemble and do not dispose of in fire.

# Transferring Files to the Player

## Transferring Files to the Player

You may select one of the following methods to transfer music content to your player: 1) Yahoo! Music Jukebox, 2) drag-and-drop via Windows Explorer. For method 1, you first need to have successfully installed the software packages included in the Music Management CD.

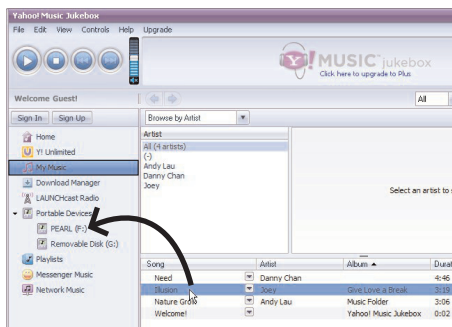
EN



**Caution:** Secure music download files must be transferred to your player through the Yahoo! Music Jukebox or the application recommended by your online music download service (Note: Services and applications must be Windows Media audio-compliant and support Digital Rights Management.) (Apple iTunes™ music content is not supported).

## Transferring Files via Yahoo! Music Jukebox (Windows XP or higher only)

Yahoo! Music Jukebox lets you manage your music easily and organize like a pro. Create your own playlists: music for work, the gym, or even dinner. You can also buy download music and transfer to your player in seconds. Just drag-and-drop and you're done. For more information on the installation and operations, please visit: <http://music.yahoo.com>



1. Launch the *Yahoo! Music Jukebox*.
2. Attach the player to your computer. The player's name should appear after a few seconds in the left navigation pane.
3. In the Yahoo! Music Jukebox, click *My Music* or click on a playlist on the left navigation pane.
4. Simply drag the playlist you want to the name of your player in the left navigation pane (you can also drag tracks, artists and albums directly from My Music).
5. The Yahoo! Music Jukebox will check to see if there is sufficient storage space on the player to copy the audio files. If not, you will have to reduce the number of audio files you are transferring.



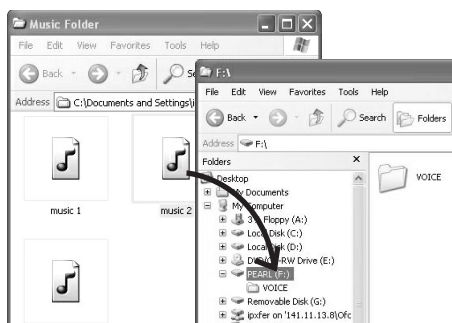
### Note:

- Do not disconnect the USB cable during music download. Doing so may corrupt system files or the files being downloaded.
- Yahoo! Music Jukebox is supported in Windows XP or higher. Windows XP requires Service Pack 1 or higher. Yahoo! Music Jukebox requires Internet Explorer 6 or above for installation.
- Required updates to Yahoo! Music Jukebox may be available from Yahoo! after installation. Please refer to the Yahoo! Music Jukebox Help for more information about these updates.

# Transferring Files to the Player

## Transferring Files via Windows Explorer (Drag and Drop)

From Windows Explorer, highlight all the audio files/folders you want to transfer to the player and drag them to the drive letter that is associated with it.




### Note:

- Windows XP requires Service Pack 1 or higher.
- Do not disconnect the USB connection during file download. Doing so may corrupt system files or the files being downloaded.

**Caution:** Secure music download files must be transferred to your player through one of the provided Jukebox software packages or any applications recommended by the online music download service. Please visit the online music download service's website where you purchased your content from for more details on transferring secure music to your player.

## Disconnecting Your Player from the Computer

For Windows 2000 or XP, from the System Tray, double click the left mouse button on the icon  and select "Unplug or Eject hardware" for Windows 2000 or "Safely Remove Hardware" for Windows XP. Select the drive corresponding to your player and click STOP.



The "Stop a Hardware player" screen will appear. Select the player to be stopped again for confirmation and click OK and disconnect your player from the computer.



# General Controls

## Before You Begin

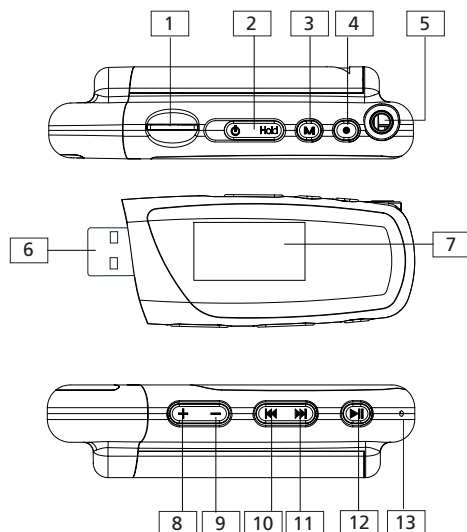
EN

The following examples illustrate what you should do before operating your player.

1. These instructions presume you've already done the followings:
  - Installed all necessary applications.
  - Transferred music from your computer to the player.
2. Unplugged the player from your computer.
3. Connect the headphones to your player.
4. Ensure the key lock is not activated by sliding "Power on/off (🔒)/Hold" towards the center position.
5. If your player isn't already on, turn it on by sliding "Power on/off (🔒)/Hold" to the left and holding until the player turns on.

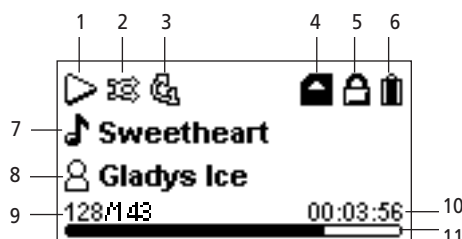
## Overview

1. Micro SD card slot
2. "Power on/off (🔒)/Hold" - Slide to the left and hold until the player turns on/off. Slide to the right to prevent accidental key activation. Slide towards the center position to unlock. Slide to the left briefly to stop playback.
3. **M** - Press once to access the player's menu. Press twice to access the Home menu. Press three times to go back to the playback screen.
4. **●** - Starts and stops recording in Voice Recording mode.
5. Earphones jack - Insert the earphones.
6. USB jack - Connects to the computer.
7. The display
8. **+** - Scrolls up, increases volume.
9. **-** - Scrolls down, decreases volume.
10. **⏮** - Skips backward, goes back
11. **⏭** - Skips forward, advances
12. **⏸** - Press once to pause playback or recording. Press again to resume. Selects among different options. Press and hold to add current music file to My Selection.
13. Microphone



# General Controls

## Playback Display

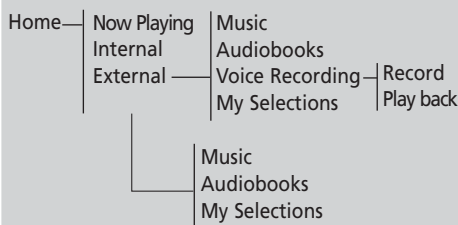


1. Indicates whether the player is playing or paused.
2. Indicates if shuffle mode is on/off.
3. Indicates if repeat mode is in repeat 1, repeat all, or off.
4. Indicates if micro SD card is detected.
5. Indicates that the key lock function is activated.
6. Indicates the battery level of the player.
7. Name of audio file.
8. Artist name.
9. Current file or section number/total number of files or sections.
10. Elapsed playback time.
11. Playback progress bar.

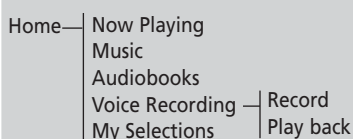
## Navigation Menus

The files are sorted according to their file types. Once you press **M** twice after the player is turned on, you will see the file menus as listed below:

### When micro SD card is detected:



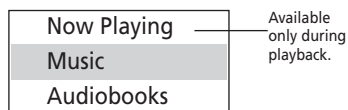
### When no micro SD card is detected:



## Selecting What You Want to Play

The following illustrates the steps to select and play audio files.

1. Press **M** twice to enter Home menu. To play music files, highlight "Music"(or "Audiobooks" to play audible files) by pressing **+** or **-** . Then press **▶▶** to advance.



2. Highlight the desired audio file by pressing **+** or **-** .
  - To play the audio file, press **▶▶** or **▶▶** . If the selected file is a music file, the song's information will show on the display during playback.
  - To pause playback, press **▶▶** .



**Note:** The information provided in the playback screen depends upon the ID3 tag information that was recorded when created by the Music Management Software or Data base the song came from.

# Listening and Recording

## Music Playback

- EN**
- |        |  |
|--------|--|
| ⏮      | Skips to the previous file*, press and hold to scan backwards within a file. |
| ⏭      | Skips to the next file, press and hold to scan forward within a file.        |
| ⏸      | Starts/ pauses playback.   |
| + or - | Increases or decreases the volume  |

\* Press ⏮ within the beginning 4 seconds of the current music file to skip to previous file. Otherwise, you will return to the beginning of the current file.

## Audiobook Playback

- |        |  |
|--------|--|
| ⏮      | Skips to the previous file when skip-by-file is selected*, skips to the previous section when skip-by-section is selected**, press and hold to scan backwards within a file. |
| ⏭      | Skips to the next file when skip-by-file is selected*, skips to the next section when skip-by-section is selected**, press and hold to scan forward within a file.           |
| ⏸      | Starts/ pauses playback.   |
| + or - | Increases or decreases the volume  |

\* Refer to page 16 for details of skipping by file or by section.

\*\* When skip-by-section is selected, press ⏮ within the beginning 4 seconds of the current audible file to skip to previous audible section. Otherwise, will return to the the beginning of current section playing.

## Voice Recording

1. To start voice recording, press **M** twice to access the Home menu.
2. Press **+** or **-** to highlight "Voice Recording". Then press **▶▶** to advance.

Music
Audiobooks
Voice Recording

3. Press **+** or **-** to highlight "Record". Then press **▶▶** to access voice recording mode.

Record
Play back

4. Press **●** when the display shows "Ready" to start voice recording.

Voice Recording
Ready

5. Press **▶▶** to pause record. Press **▶▶** again to resume recording.

Voice Recording
VOICE001.WAV
00:00:10 32:04:32

6. Press **●** to stop recording.

# Listening and Recording

## Playback Recorded Files

1. Follow steps 1-2 above to enter the Voice Recording sub-menu.
2. Press **+** or **-** to highlight "Play back" and press **▶▶** to advance.
3. Press **+** or **-** to highlight the recorded file and **▶▶** to start playback.

## Deleting Recorded Files

1. Highlight the unwanted voice recording, press **▶▶** to start the playback.
  - Refer to Playback Recorded Files for details in highlighting a recorded file.
2. Press **M** and then **+** or **-** to highlight "Delete File" and press **▶▶** to confirm the deletion.

EN

## My Selections

### Adding Files to My Selections

You can add your favorite songs to My Selections by pressing and holding **▶▶** during music playback. The music (mp3/wma/wav) file that is currently playing is added to My Selections.

Alternatively, when a favorite song is highlighted, press and hold **▶▶** can add the highlighted song to My Selections. (Refer to Selecting What You Want to Play on page 13 for details in highlighting a song.) Repeat the above steps for selecting more items.

### Clearing My Selections

1. Press **M** during playback to access the Player's menu. Highlight "Clear MySel" by pressing **+** or **-**. Then press **▶▶** to confirm deletion of the selected items.

Clear MySel
Settings
System Info

### Playing My Selections

1. Press **M** twice to access the Home menu, highlight "My Selections" by pressing **+** or **-**. Then press **▶▶** to enter the My Selections.
2. Press **▶▶** to start playback of selected items.

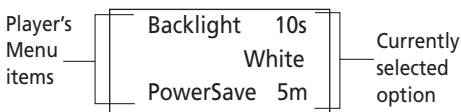
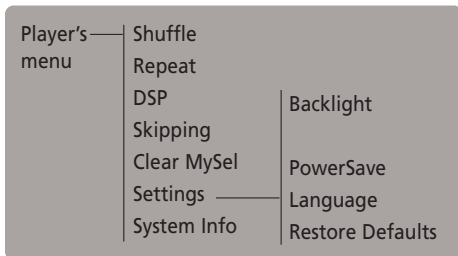


## Player's Menus

## Accessing the Player's Menus


Press **M** during playback to access the player's menu.

## Navigation and Selection



1. To scroll up or down to highlight items on the screen, press **+** or **-**.
2. Press **►||** repeatedly to select options.
3. To go back to the previous menu level, press **◄◄**.
4. Press **M** to confirm your selection and exit the menu.

## Shuffle

Press **►||** repeatedly to select shuffle  on or off. Files will be played randomly when shuffle is activated. This item is only available when you are listening to a music (mp3/wma/wav) file.

## Repeat

Press **►||** repeatedly to select a repeat mode.  
This item is only available when you are listening  
to a music (mp3/wma/wav) file.

Repeat One  - Repeat the current item.

Repeat All  - Repeat all items.

Repeat Off - Repeat is Off.

### DSP (Digital Signal Processor)

Press **►||** repeatedly to select a DSP mode.  
Options available: Flat, Bass, Pop, Rock and Jazz.

## Skipping

Press **►||** repeatedly to select skip by file or section. This item is only available when you are listening to a multiple-sectioned Audible file.

## Clear MySel

Refer to page 15 for details.

## Rec Dur

This item defines the recording duration. Press **▶||** repeatedly to select among 5m, 30m, 1h and Max.

This item is only available when you are in Voice Recording mode.

# Player's Menus

## Settings

Press ►► to enter the Settings menu and then press + or - to highlight an item. Press ►► repeatedly to change settings.

Backlight:

- to adjust the time before the display light turns off (On/10s/20s/30s).
- to adjust the color of the display light (Red/Blue/Green/Yellow/Cyan/Purple/White).

Power Save(Off, 1m, 2m, 5m and 10m): to adjust the duration for automatic shut down when the player is idle.

Language: to select the menu's language.

Restore Defaults: to reset all menus to factory defaults.

EN

## System Info

Press ►► to show the amount of free space available and the firmware version.

## Additional Information

### Tips and Troubleshooting

- Problem: Player repeats same tracks or all tracks.
  - Repeat play is turned on. Refer to the Repeat section on page 16 on how to access and change the repeat setting.
- Problem: Audio distorted at high volume.
  - Change the DSP mode to Flat.
  - Turn down the volume.
- Problem: The audio tracks on my player keep skipping or popping.
  - You'll need to re-record the audio track – make sure you close all other applications on your PC when you record.
  - Try recording with Error Correction setting turned on.
- Problem: Player turns itself off.
  - Your player turns itself off if you leave it in pause mode or navigation mode for the duration specified in Power Save setting.
- Problem: The player cannot be turned on.
  - Battery is empty.
  - Ensure the keys lock is not activated.
  - Reset the player by removing and re-installing of the battery.
  - If the player still cannot be turned on after resetting, perform a firmware upgrade to restore it.
  - Please go to <http://www.rcaaudiovideo.com/faq> for more details.
- Problem: Player does not respond to key presses.
  - If your player stops responding to key presses, you can reset it by removing and re-installing of the battery. Most of your settings will be preserved; only the settings that you have changed after your last power off will be lost.
  - Make sure the Hold switch is not on by sliding the "Power on/off (⏻)/Hold" switch to the left."

## Additional Information

EN

- Problem: Player cannot play WMA songs.
- Secure music download files must be transferred to your player through the Yahoo! Music Jukebox or the application recommended by your online music download service (Note: Services and applications must be Windows Media audio-compliant and support Digital Rights Management.) (Apple iTunes music content is not supported).
- Problem: The player takes a long time to read files in a folder.
- File reading may take longer if too many files are put in a single folder. Re-organize your files into a number of folders.
- Problem: Why song information is not showing correctly?
- Song information may not match your current player's language setting. Change the language setting.
- Why does my player report that it is full?
- You have filled the capacity of the internal memory of the player.
- Problem: Cannot playback tracks on the player.
- Make sure audio tracks are encoded in the mp3 or Windows Media formats at supported bitrates.  
Bitrates support by the player:  
mp3 – 32 to 320 kbps  
wma – 48 to 192 kbps
- WMA files may be DRM protected and you don't have the proper rights (license) to play the files.
- Check the website and/or application help system of the music download service provider from where the content was purchased from for license acquisition details. For more information on how license acquisition works, go to [www.microsoft.com/windowsmedia/drm](http://www.microsoft.com/windowsmedia/drm).

## Check for Updates

Visit

<http://www.rcaaudiovideo.com/digitalaudiosupport> for the latest news and firmware upgrades for our digital media player.

## Frequently Asked Questions

You can get FAQ information at

<http://www.rcaaudiovideo.com/faq>

## Specifications

### Hardware

- Dimensions: 80 mm H, 28.5mm W, 22mm D
- Unit Weight: 35g
- Stereo Headphones/USB Connection Jack
- Battery Operated: AAA battery x 1

### USB Drive

- External USB Drive: When connected to a computer via USB, the player is capable of storing any file type allowing the user a fast, convenient method of storing, retrieving, and transferring files. This includes word processing files, presentations, spreadsheets and any other computer files.
- Capacity: TH1100 - 512MB, TH1101/TC1101 - 1GB, TH1102/TC1102 - 2GB
- Connection: USB 2.0, Hi-speed capable

### Software

- Includes the player applications and media management software.

# Limited Warranty (U.S.)

## What your warranty covers:

- Defects in materials or workmanship.

## For how long after your purchase:

- One year from date of purchase.  
The warranty period for rental units begins with the first rental or 45 days from date of shipment to the rental firm, whichever comes first.

## What we will do:

- Provide you with a new, or at our option, a refurbished unit. The exchange unit is under warranty for the remainder of the original product's warranty period.
- Proof of purchase in the form of a bill of sale or receipted invoice which is evidence that the product is within the warranty period must be presented to obtain warranty service. For rental firms, proof of first rental is also required.

## How to make a warranty claim:

- Properly pack your unit. Include any cables, etc., which were originally provided with the product. We recommend using the original carton and packing materials.
- Include evidence of purchase date such as the bill of sale. Also print your name and address and a description of the defect. Send via standard UPS or its equivalent to:

**Thomson Inc.  
Product Exchange Center  
11721 B Alameda Avenue  
Socorro, Texas 79927**

- Insure your shipment for loss or damage. Thomson accepts no liability in case of damage or loss en route to Thomson.
- Pay any charges billed to you by the Exchange Center for service not covered by the warranty.
- A new or refurbished unit will be shipped to you freight prepaid.

## What your warranty does not cover:

- Customer instruction. (Your Owner's Manual provides information regarding operating Instructions and user controls. For additional information, ask your dealer.)
- Installation and set-up service adjustments.
- Batteries.
- Damage from misuse or neglect.
- Products which have been modified or incorporated into other products.
- Products purchased or serviced outside the USA.
- Acts of nature, such as but not limited to lightning damage.

## Product Registration:

- Please complete and mail the Product registration Card packed with your unit. It will make it easier to contact you should it ever be necessary. The return of the card is not required for warranty coverage.

## Limitation of Warranty:

- **THE WARRANTY STATED ABOVE IS THE ONLY WARRANTY APPLICABLE TO THIS PRODUCT. ALL OTHER WARRANTIES, EXPRESS OR IMPLIED (INCLUDING ALL IMPLIED WARRANTIES OF MERCHANTABILITY OR FITNESS FOR A PARTICULAR PURPOSE) ARE HEREBY DISCLAIMED. NO VERBAL OR WRITTEN INFORMATION GIVEN BY INC., ITS AGENTS OR EMPLOYEES SHALL CREATE A WARRANTY OR IN ANY WAY INCREASE THE SCOPE OF THIS WARRANTY.**
- **REPAIR OR REPLACEMENT AS PROVIDED UNDER THIS WARRANTY IS THE EXCLUSIVE REMEDY OF THE CONSUMER. THOMSON INC. SHALL NOT BE LIABLE FOR INCIDENTAL OR CONSEQUENTIAL DAMAGES RESULTING FROM THE USE OF THIS PRODUCT OR ARISING OUT OF ANY BREACH OF ANY EXPRESS OR IMPLIED WARRANTY ON THIS PRODUCT. THIS DISCLAIMER OF WARRANTIES AND LIMITED WARRANTY ARE GOVERNED BY THE LAWS OF THE STATE OF INDIANA. EXCEPT TO THE EXTENT PROHIBITED BY APPLICABLE LAW, ANY IMPLIED WARRANTY OF MERCHANTABILITY OR FITNESS FOR A PARTICULAR PURPOSE ON THIS PRODUCT IS LIMITED TO THE APPLICABLE WARRANTY PERIOD SET FORTH ABOVE.**

## How state law relates to this warranty:

- Some states do not allow the exclusion nor limitation of incidental or consequential damages, or limitations on how long an implied warranty lasts, so the above limitations or exclusions may not apply to you.
- This warranty gives you specific legal rights, and you also may have other rights that vary from state to state.

## If you purchased your product outside the USA:

- This warranty does not apply. Contact your dealer for warranty information.

EN

## Limited Warranty (Canada)

Thomson multimedia Ltd. warrants to the purchaser or gift recipient that if any manufacturing defect becomes apparent in this product within 1 year from the original date of purchase, it will be replaced free of charge, including return transportation.

EN

This warranty does not include damage to the product resulting from accidents, misuse or leaking batteries.

Should your product not perform properly during the warranty period, either:

1. Return it to the selling dealer with proof of purchase for replacement,  
OR
2. Remove the batteries (where applicable), and pack product complete with accessories in the original carton (or equivalent).  
— Mail prepaid (with proof of purchase) and insured to:

**Thomson multimedia Ltd.  
6200 Edwards Blvd.,  
Mississauga, Ontario L5T 2V7  
Canada**

The provisions of this written warranty are in addition to and not a modification of or subtraction from the statutory warranties and other rights and remedies contained in any applicable legislation, and to the extent that any such provisions purport to disclaim, exclude or limit any such statutory warranties and other rights and remedies, such provisions shall be deemed to be amended to the extent necessary to comply therewith.

If you are unable to find a qualified servicer for out of warranty service, you may write to:

Thomson Inc.  
P.O. Box 0944  
Indianapolis, Indiana, U.S.A., 46206-0944

---

IMPORTADOR

Comercializadora Thomson de México, S.A. de C.V.

Álvaro Obregón No. 151. Piso 13.

Col. Roma. Delegación Cuauhtémoc

C.P. 06700. México, D.F.

Telefono: 52-55-11-020360

RFC: CTM-980723-KS5

EXPORTER

Thomson Inc.

P.O. Box 1976

Indianapolis, IN 46206-1976

© 2007 Thomson Inc.

Trademark(s) ® Registered

Marca(s) ® Registrada(s)

Marque(s) ® Déposée(s)

[www.rcaaudiovideo.com](http://www.rcaaudiovideo.com)

Tocom (v4.0)