

# RPx400 USB Drivers and Software Installation Guide



Congratulations on your purchase of a DigiTech RPx400. This installation guide contains the information to install the required USB drivers, X-Edit editor/librarian and Pro Tracks recording software for use with the RPx400. Please follow these instructions carefully to ensure smooth installation of each of these components.

## A. Installing Pro Tracks

1. Start your computer. Close any open programs you have running. Place the Pro Tracks CD-ROM in your CD-ROM drive.
2. If you have autorun enabled, the Pro Tracks installation menu opens automatically, showing you several buttons. If the menu does not appear automatically, you can open it by selecting **Start>Run** and entering **d:\Autorun.exe** (where **d:\** is the letter of your CD-ROM drive).
3. Click the Install Pro Tracks button and follow the installation instructions on the screen. If DirectX 8.1+ is not installed, the installer will automatically install it for you. If DirectX is installed at this time, you will need to restart your computer and return to Step 1.

NOTE: If you exit Setup without completing the installation, choose **Start>Run**, type **d:\Autorun.exe** (where **d:\** is your CD-ROM drive), and click **OK**. This will reopen the installation menu. Click **Install Pro Tracks** to start installation again.

4. When the **Installation Complete** window appears deselect **Launch Pro Tracks** and **Read Me** check boxes and click **Finish**.
5. Click **Exit** from Pro Tracks Installation screen.

## B. Installing DigiTech USB Drivers

You must install the USB drivers to use the RPx400's USB connection with your computer. There are different installation procedures for Windows XP users and Windows 2000 users. Follow the directions in the section that applies to your operating system.

### Windows XP Users

1. Take the RPx400 out of the box and plug the power in.
2. Remove the USB Warning sticker covering the RPx400's USB port.
3. Connect the included USB cable to your computer and to the RPx400.
4. You will see multiple messages pop up from the task bar indicating that your computer has found a new USB device. There are multiple messages because there are four USB devices in the RPx400, two MIDI devices and two audio devices.
5. Wait until Windows has found and identified all of the USB devices from the RPx400. When the message "Your new hardware is installed and ready to use" appears, Windows has completed identifying your new hardware. however, installation of the software **IS NOT** complete.
6. Put the X-Edit software CD into your CD-ROM drive. The installation menu should

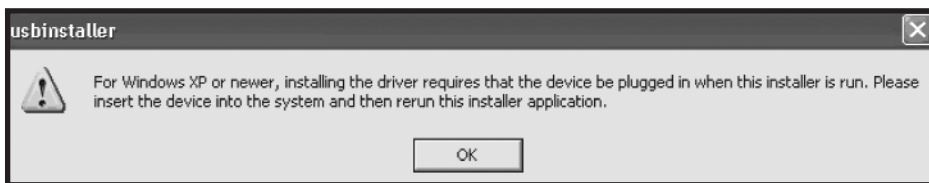
automatically appear (if installation does not start automatically, go to **Start>Run**, click on **Browse**, type **d:\instmenu.exe** (where **d:\** is your CD-ROM drive), and click **OK**.

- Now select **USB Audio MIDI Drivers** from the menu. You will see the following window appear:



- Click **Next**. Installation of the drivers could take several minutes.

NOTE: If you don't have the USB cable connected to the RPx400 you will see this:



If you see this message, cancel the installation and connect the USB cable to the RPx400 then restart the installation and begin with Step 1 of this section.

- If the RPx400 is connected correctly to the computer you will see the following message from Windows:



- Click **Continue Anyway** and you will see:



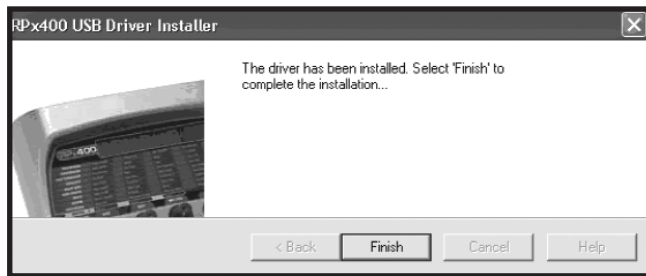
11. Click **Continue Anyway** and you will see:



12. Click **Continue Anyway** and you will see:



13. Click **Continue Anyway** and you will see:

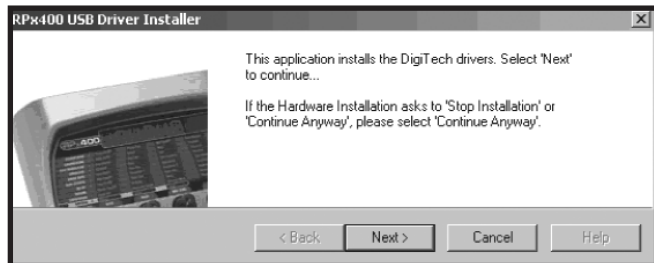


14. Click **Finish**. The RPx400 USB driver installation is now complete.

## **Windows 2000 Users**

NOTE: **DO NOT** connect the RPx400 to your Windows 2000 computer until **AFTER** the DigiTech USB drivers are installed or it may cause instability in Windows.

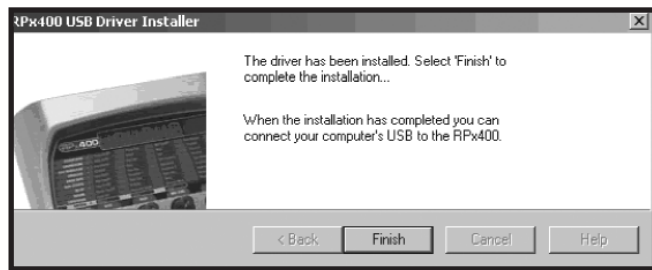
1. Make sure you **DO NOT** have the RPx400 USB plugged into your computer.
2. Put the X-Edit CD into your CD-ROM drive. The installation menu should automatically appear (if installation does not start automatically, go to **Start>Run**, click on Browse, type **d:\instmenu.exe** (where **d:\** is your CD-ROM drive), and click **OK**.
3. Select **USB Audio MIDI Drivers** from the menu that appears. You will see the following window:



4. Click **Next** and Windows will display the following message:



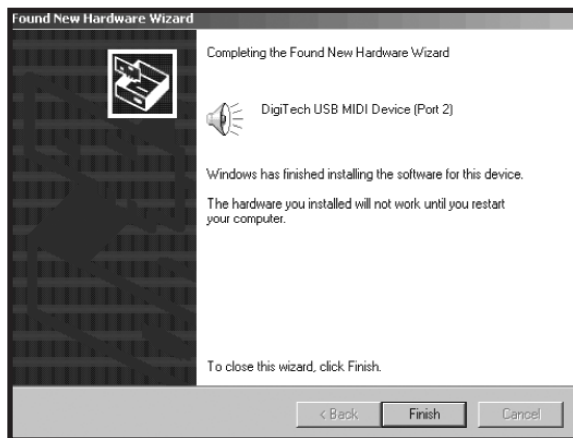
- 5..Click **Yes** and you will see the same window appear one more time. Click **Yes** and you will see:



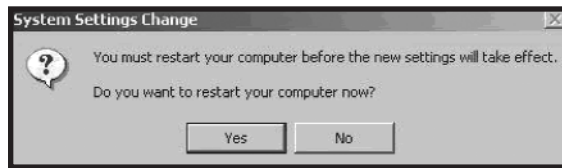
6. Click **Finish**.
7. Connect the RPx400 to the computer with the included USB cable. The following window will appear:



8. Click **Yes** and you will see:



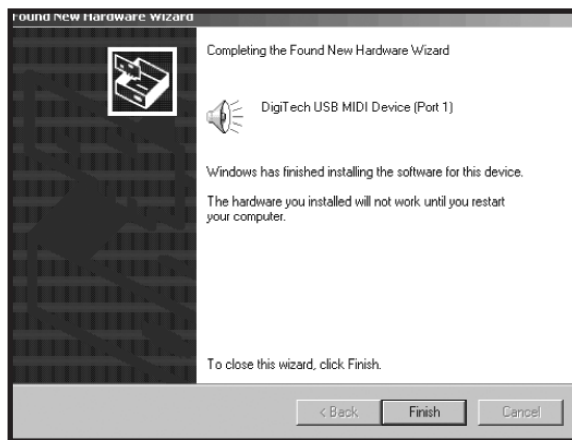
9. Click **Finish** and you will see:



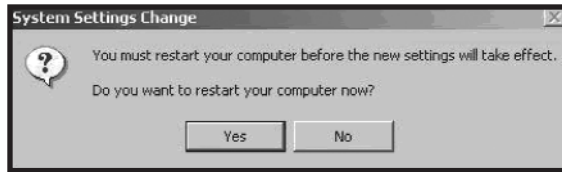
10. You **DO NOT** need to restart your computer yet. Click **No** and you will see:



11. Click **Yes** and you will see:



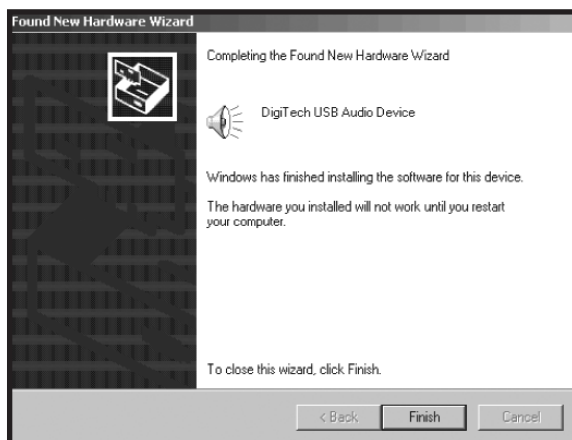
12. Click **Finish** and you will see:



13. You **DO NOT** need to restart your computer yet. Click **No** and you will see:

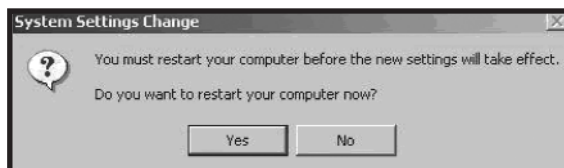


14. Click **Yes** and you will see:

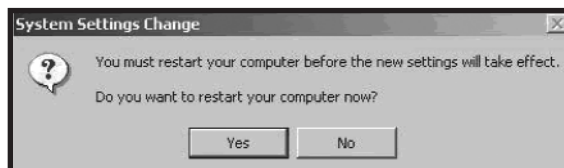




15. Click **Finish** and you will see:



16. Click **No**. Repeat steps 14 and 15 once more. Then you will see:



17. This time click **Yes** and your computer will restart. The RPx400 USB driver installation is now complete.

## C. Setup Windows Audio and MIDI

When we installed the DigiTech USB Audio and MIDI drivers, Windows may have automatically selected them as your default audio and MIDI outputs. This means that your Windows sounds will be sent to the RPx400. We need to check if these have been changed and return the settings to what they were before.

### Windows XP Users

1. Select **Start>Control Panel>Sound and Audio Devices**.
2. Select the Audio tab.
3. Under **Sound playback>Default device**, open the pull-down menu and make sure your computer's sound card is selected.
4. Under **Sound recording>Default device**, open the pull-down menu and make sure your computer's sound card is selected.
5. Under **MIDI music playback>Default device**, open the pull-down menu and make sure your MIDI device is selected.

### Windows 2000 Users

1. Select **Start>Settings>Control Panel**.
2. Select **Sounds and Multimedia**.
3. Select the Audio tab.
4. Under **Sound Playback>Preferred device**, open the pull-down menu and make sure your sound card is selected.
5. Under **Sound Recording>Preferred device**, open the pull-down menu and make sure your sound card is selected.
6. Under **MIDI Music Playback>Preferred device**, open the pull-down menu and make sure your MIDI device is selected.

These options only need to be changed once now that the drivers are installed. Later we will change the settings in Pro Tracks to use the RPx400 for audio and MIDI.

At this point you are ready to use the RPx400 to record with Pro Tracks. You can continue to the next section to install the X-Edit/Librarian. If you are anxious to record, skip the **Setting Up the RPx400 MIDI** Section

## D. Install DigiTech X-Edit Editor/Librarian

Installing X-Edit allows you to edit and store your presets on your computer. Exit any programs that are still running before beginning the X-Edit Installation procedure.

NOTE: X-Edit requires Microsoft .NET Framework to run. This software will automatically be installed by the X-Edit installer if it is not found on your computer. To ensure that .NET installs smoothly, Microsoft recommends that you disable your anti virus software before continuing. Once .NET and X-Edit are installed, you can re-enable your anti virus protection.

**CAUTION: If you are running Windows 2000 and McAfee AntiVirus, please read the following note:**

**If you are running McAfee Antivirus, Microsoft recommends that you completely un-install (NOT just disable) McAfee Antivirus from your computer. McAfee interferes with Microsoft's .NET installation process and must be removed to ensure a smooth installation. Once the .NET and X-Edit installation is complete, you may re-install McAfee and re-enable your anti-virus protection.**

1. Return to the installer menu. If it is no longer open, you can re-open it by selecting **Start>Run** and entering **d:\instmenu.exe** (where d:\ is the letter of your CD-ROM drive).and select DigiTech X-Edit.
2. The installer will now check your computer for Microsoft .NET Framework. If it is found, you can skip to Step 5. If it is not found, the .NET installer will be launched. Follow the instructions that appear. This could take several minutes and you might see the progress bar complete and start over again several times as well. This is normal.
3. When the .NET installer has completed, you will need to restart your computer if you are running Windows 2000. If not, move on to the next step. After you have restarted your computer, the installer should automatically continue. If it does not, start over at Step 2.
4. When the **Welcome to the Installation Wizard for DigiTech X-Edit 1.0** window appears, click **Next**.
5. Fill in the customer information. Select **Anyone who uses this computer** to allow all users to use X-Edit. Select **Only for me** if you want to be the only user to use X-Edit on the computer. Click **Next**.
6. On the next screen, click **Install**.
7. When the installation is complete, click **Finish**.

X-Edit is now installed on your computer. If you disabled or un-installed your antivirus software, you can now reinstall or re-enable it. If you want to edit presets, make sure that the RPx400 is powered on and connected to your computer with the USB cable. Then you can start X-Edit.

## E. Setting Up the RPx400 MIDI

1. Start Pro Tracks. The first time Pro Tracks is started, the **Wave Profiler** utility will check and configure your current audio I/O devices. Click **OK** when these tests have finished.
2. When prompted to register your Pro Tracks software, please take the time to fill out the registration information.
3. If the **Tip of the Day** window appears, click **Close**.
4. If no previous MIDI outputs have been selected, the **No MIDI Outputs Selected** window will appear. Click **Choose MIDI Outputs Now** button. The **MIDI Devices** window will open. If the **No MIDI Outputs Selected** window does not appear, go to the **Options>MIDI Devices** menu option.
5. Under both Inputs and Outputs, choose **RPx400 USB MIDI**. Do not select **DigiTech USB X-Edit** or any other available selections. Click the **Move Selected Devices to Top** button.
6. Click the **OK** button and the window will close.
7. If the Quick Start window appears, click the **Close** button.

## F. Setting Up the RPx400 for Hands-Free Recording

1. From the Pro Tracks menu bar, select **Options>Control Surfaces**. The Control Surfaces window will appear.
2. Click the yellow **+** button to add a new control surface. The **Control Surface Settings** window will open.
3. In the **Control Surface** pull-down menu, select **DigiTech RPx**. Verify that the Input and Output port settings still have **RPx400 USB MIDI** selected. If they do not, do this now.
4. Click the **OK** button. **DigiTech RPx** should now be displayed as the **Connected Surface** in the **Control Surfaces Window**.
5. Click the **Close** button.

Pro Tracks can now respond to the RPx400 for automated recording functions.

## G. Setting up Pro Tracks for RPx400 Audio

1. From the Pro Tracks menu bar, select **Options>Audio**. The Audio Options window will appear. Click the **Drivers** tab.
2. Under the Input Drivers settings, select **DigiTech USB 1-2 In/Out** and **DigiTech USB 3-4 In Only** and deselect all other options.
3. Under the Output Drivers settings, select **DigiTech USB 1-2 In/Out** and deselect all other options. **DO NOT** select **DigiTech USB 3-4 Input Only**.
4. Click the **OK** button.

5. Click the **OK** button when the window stating changes will be saved upon re-start appears.
6. Close Pro Tracks. When you are prompted to save changes, click No.
7. Re-start Pro Tracks.
8. Close the **Tip of the Day** and **Quick Start** windows if they appear.
9. From the Pro Tracks menu bar, select **Options>Audio**.
10. Verify that the Playback and Record Timing Master settings have **DigiTech USB I-2 In/Out** selected. If not, select these now.
11. Set the number of **Virtual Mains** to **2**.
12. Click the **Wave Profiler** button at the bottom.
13. Click the **Yes** button to continue performing the tests.
14. When the profiling operation is successfully completed, click the **OK** button.
15. Click the **OK** button to close the **Audio Options** window if it is still open.
16. One last thing we recommend is enabling the auto save feature. Go to **Options>Global** and select the **General** tab. Next to **Auto save every**, enter 10 minutes and then click **OK**.

**You are now ready to use the RPx400 with Pro Tracks to record. Enjoy!**