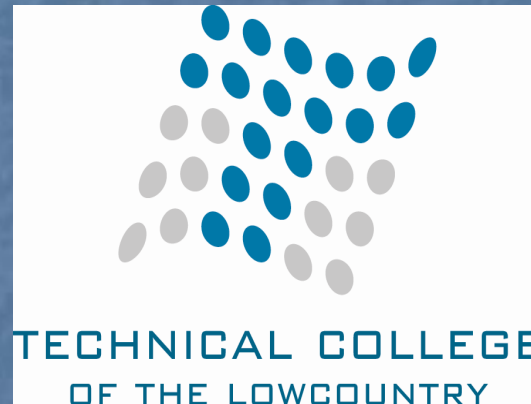
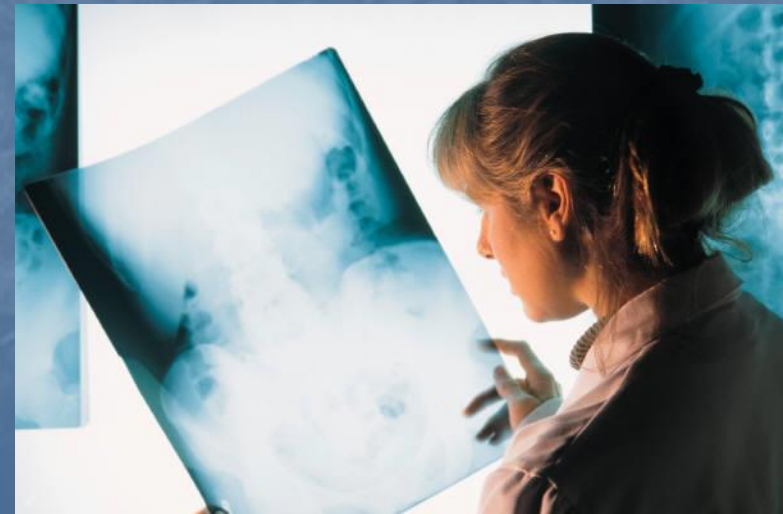


TCL's Radiology Technology Program



TCL Division of Health Science Program

- Associate in Health Science
 - Major: Radiologic Technology



Radiologic Technology

Associate Degree

Glenn Levicki: MSRS, RT(R), (MR), (CT), (ARRT) Program
Director

Erika Johnson, BS, RT(R), (ARRT): Clinical Coordinator

- Accredited:

Joint Review Committee on
Education in Radiologic
Technology (JRCERT)

- Fall entry only

- 6 semesters (Associate Degree)
- Eligible for national registry exam to obtain RT (R).



- Accept 16 students



Deadline Date for Application to Radiology Technology Program

April 15, 2015



How Do I Begin?

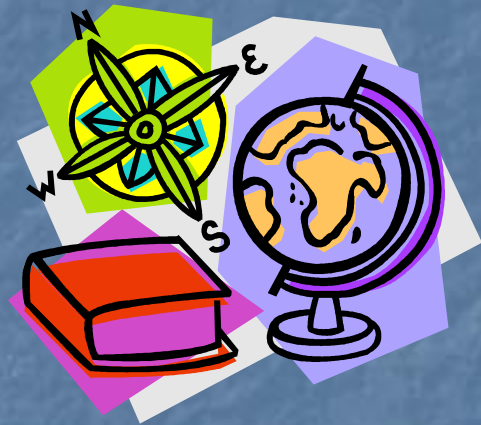


1. Apply to the college
 - Building 2 (Coleman Hall) in Beaufort
 - New River Campus in Bluffton
 - Hampton Campus (Mungin Center) in Hampton
 - Online at www.tcl.edu.
 - Acceptance to TCL does ***NOT*** guarantee acceptance into the Radiology Technology Program
2. Have ***ALL*** official transcripts sent to college's Beaufort Admissions Office
 - High school or GED certificate
 - All college
 - Assure these transcripts are also on file in the Division of Health Sciences.
3. Apply for Financial Aid

I've never been to College!

Placement test – COMPASS

1. Make appointment to take
 - Testing Center (Building 1, Room 201) Beaufort
 - Call (843) 525-8344
 - New River Campus in Bluffton
 - Call (843) 470-6002
 - Hampton Campus in Hampton
 - Call (803) 943-4262
2. Tests
 - English
 - Math
 - Reading
3. Takes at least 2 hours to complete
4. Get results immediately
 - Establishes readiness for college courses



I've been to college!

Do I need to take the COMPASS?

A grade of a "C" or better in

- College English and college math (algebra)

OR

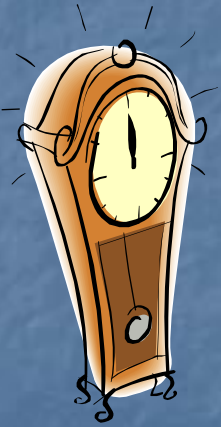
- History/Psychology and college math (algebra)

MAY NOT need to take COMPASS! 😊



Is there a time limit on College courses?

Math and Science have
5 year time limit



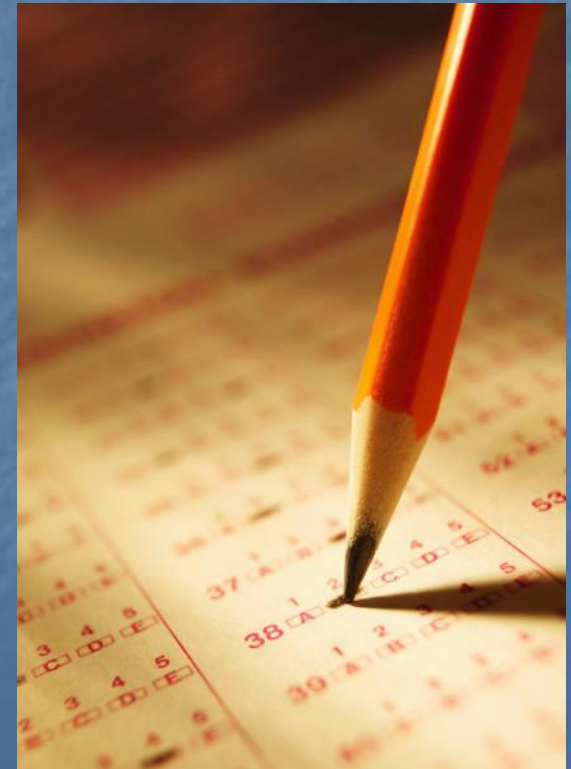
What is next?

- Advising appointment
 - Call (843) 525-8267
- Bring Compass results (if applicable)
 - Determine curriculum readiness
 - May need to take college courses to evaluate academic success
- Bring College transcripts (if applicable)
 - Evaluate courses for transfer
 - Need grade point average (GPA) of 2.5 or greater



What is the TEAS?

- Entrance Test
- Tests English, math, reading, and science skills
 - No calculators
 - Computerized
- Results are good for 3 years at TCL
- Cost is \$60
 - Pay for test in Building 2, Cashier
- Takes about 3½ hours to complete
 - Computerized
 - Able to print results on completion



TEAS



Reading 50 minutes

Math 56 minutes

Science 50 minutes

English 50 minutes



Is there a study guide?



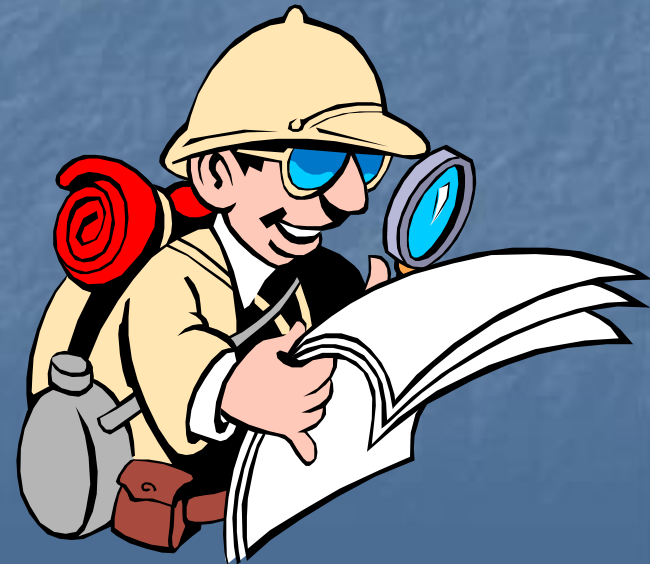
Yes

Available at the TCL Bookstore:

Cost \$ 63.35

Where do I go to take the TEAS Test?

- Testing Center-Beaufort Campus
 - Located in Building 1; Room 210
- Call 843-525-8344 to schedule a testing time
- Must have and present:
 - Receipt of payment
 - Picture ID
 - Bring pencils (scrap paper provided)



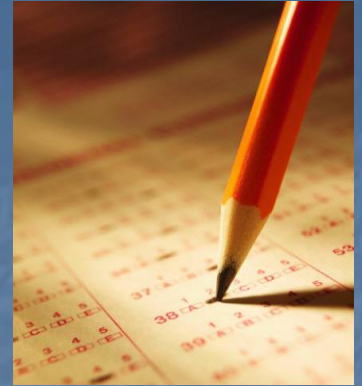


The TEAS is computerized

- Timed test

- Key to success
 - Tutoring available at the Academic Support Center 525-8221
 - Use study guide available
 - Practice the sample tests with a timer
 - TCL Testing Center web site www.tcl.edu





Do I get a copy of my results?

Yes

Results may be printed from the
ATITESTING.COM site

What is passing?

- Composite Average
 - 63% Version V



How often can I take it?

May retake the test one time in a
12 month period

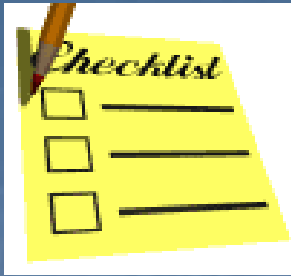




I passed the TEAS Test! What do I do now?

Complete program specific health science application checklist and Radiology Technology weighted admission criteria. Meet with an advisor to submit your application checklist and weighted admission criteria.

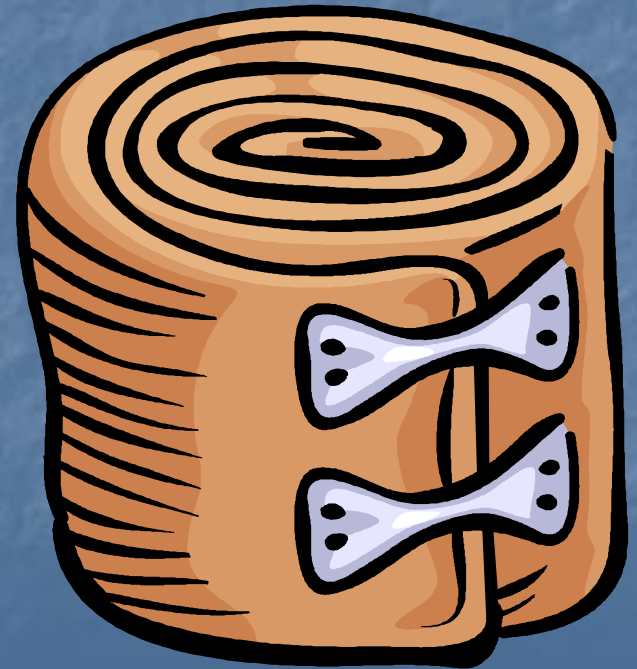




Application Checklist

- Complete health science program checklist and weighted admission criteria.
 - Sign both forms.
 - Bring a copy of your TEAS results
 - Meet with advisor within 6 months prior to application
 - Make an appointment with an advisor to submit signed application checklist and weighted admission criteria in to the Division of Health Sciences for program specific application process.
- Meet the published application deadline dates.

Let's Wrap It Up! 😊



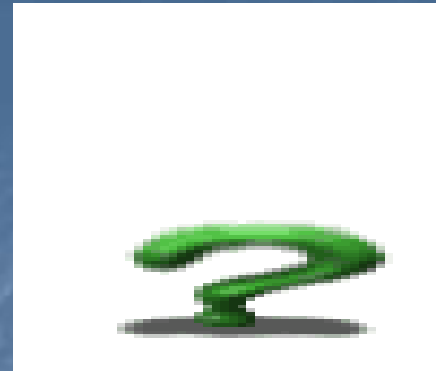


Tie Up the Loose Ends

1. Apply to TCL
2. Request ALL official transcripts be sent to TCL Admissions office
 - a) Assure copies have been sent to the Division of Health Sciences
1. Meet with Health Science advisor 6 months prior to application
2. Take entrance exam (TEAS Test)
3. Apply by published deadline



QUESTIONS?



Email mosullivan@tcl.edu

Call 843-525-8267 and schedule an appointment

Thank you for your interest in the
Radiology Technology Program at TCL

