

DESCRIPTION

The WARMUP Low-Profile Speedfit Tee Kit is suitable for use with Warmup NAMS self-regulating cable.

APPLICATION

The Speedfit-Tee is used to create a "T" connection with 3 self-regulating cables. This application is found on tracing runs for water lines as well as a replacement for downspout runs in roof and gutter applications. These connection kits must be installed according to NAMS guidelines and minimum installation temperatures.

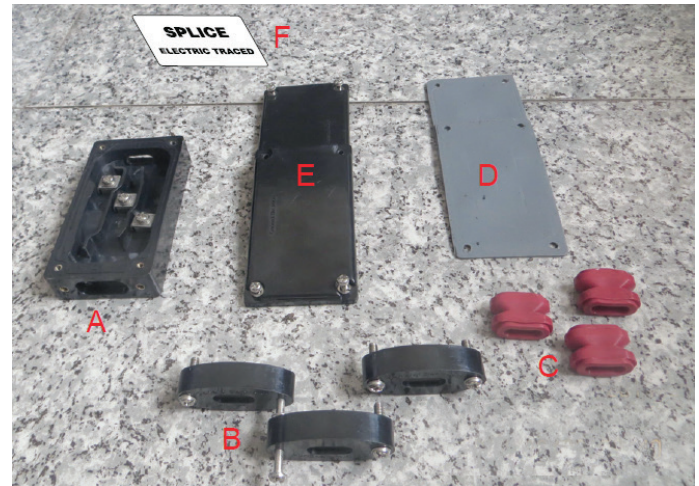
APPROVALS



WARNING

The components are electrical devices. They must be installed correctly to ensure proper operation and to prevent shock or fire. Carefully follow all of the installation instructions and read these important warnings.

- To minimize the danger of fire from sustained electrical arcing if the heating cable is damaged or improperly installed, and to comply with the requirements of the national electrical codes, ground-fault equipment protection must be used on each heating cable branch circuit. Arcing may not be stopped by conventional circuit protection.
- Bus wires will short if they contact each other. Keep bus wire separated.
- Keep ends of heating cable and kit components dry before and during installation.
- The black heating cable core is conductive and can short. It must be properly insulated and kept dry.



KIT CONTENT

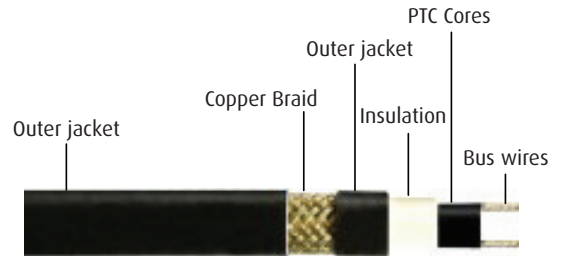
Item	Qty	Description
A	1	Main Box
B	3	Pressure Seal End
C	3	Grommets
D	2	Gaskets for Main Box
E	2	Cover for Main Box
F	1	Label

- Component approvals and performance are based on the use of specified parts only. Do not substituted parts or use vinyl electrical tape.
- Leave these installation instructions with the user for future reference.
- The heating cable should not be embedded in the thermal insulation.
- The cable should not be twisted during installation.
- De-energize all power circuits before installation or servicing.
- The conductive layer of this heating cable device must be connected to a suitable grounding/earthing terminal.

Caution:

Charring or burning the heat-shrinkable tubes in this kit will produce fumes that may cause eye, skin, nose and throat irritation.

INSTALLATION INSTRUCTIONS



Cable with outer jacket for dry and wet conditions

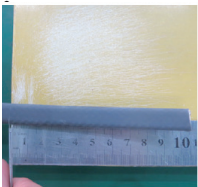
1- Leave extra wire for connections and mishaps.



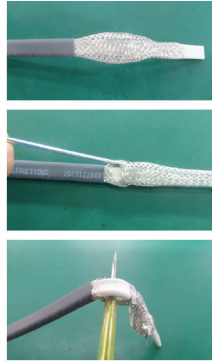
2- Insert the Pressure Seal End first and then the grommet for each cable.



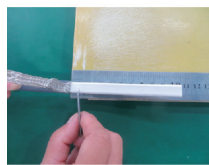
3-
• Do not cut the braiding.
• Strip the outer jacket.
• Slightly bend the cable where you made the cut to strip it.



4-
• Push the braid back to create a bump.
• Then use a screwdriver or similar to create an opening and slide the inner cable out of the braided ground mesh.
• Do not cut the ground braid.



5- Now expose the inner core cables and carbon matrix by carefully removing the inner jacket. Do not cut the conductor cables.



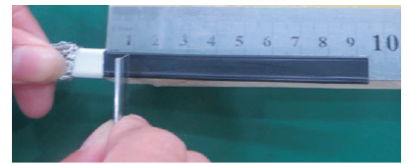
6- Twist the ground braid clean for future connection to screw connector.



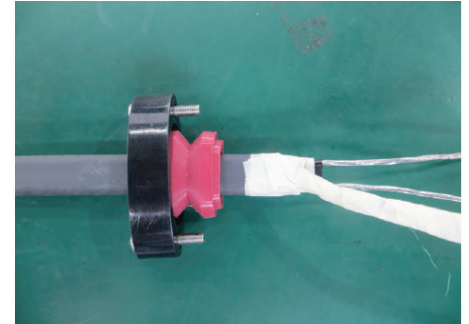
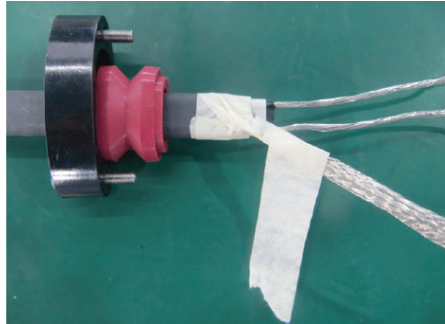
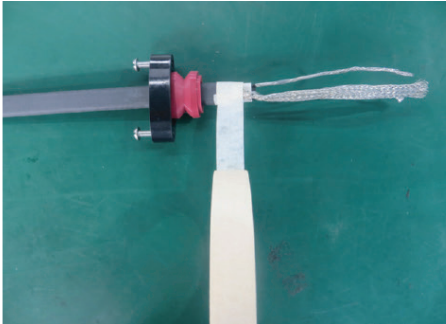
7- Separate bus wires from the solid carbon center and peel them off.



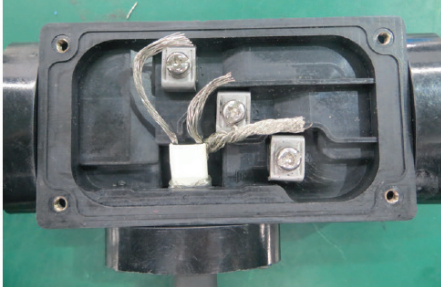
8- Clear about 3-4" of the inner wires from the carbon matrix, then cut off the excess matrix in between. You should be left with a twisted ground braid, and two inner conductor cables about 3-4" long.



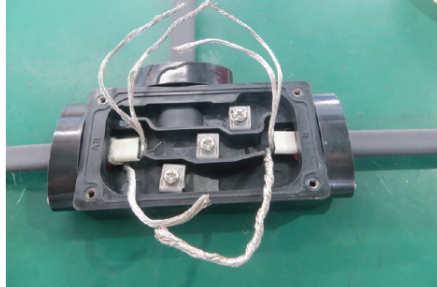
- 9-
- Using the glass cloth tape, put the ponytail braid against the inner jacket and do a minimum of 3 loops around the inner jacket.
 - Separate from the cable and loop a minimum of two times around the braid.
 - Install the grommet to the edge of the loop tape. Do not install grommet over the tape.



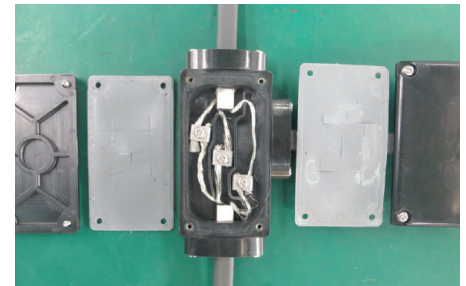
- 10-
- Install wire number 3 in the main box.
 - Install the grommet into the hole of the main box.
 - Push pressure seal end and then tight crews back into the main box.



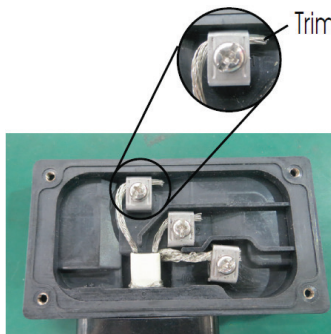
- 12-
- Install the wires number 1&2 in the main box.
 - Install the grommet into the hole of the main box.
 - Push pressure seal end and then tight crews back into the main box.



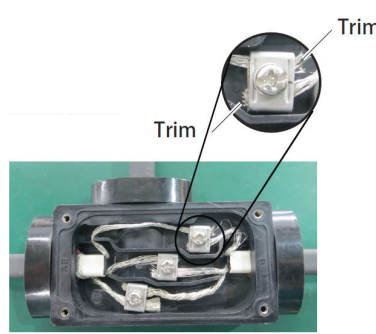
- 14-
- Install the 2 gaskets and the 2 covers onto the main box.
 - Tighten the screw back into position



- 11-
- Loosen the screw number 3.
 - Install wire number 3 on its base.
 - Tighten the screw back into position.
 - Cut all extra wire and braid.



- 13-
- Loosen the screws number 1&2.
 - Install wire number 1&2 on their base.
 - Tighten the screw back into position.
 - Cut all extra wire and braid.



- 15-
- Affix the Low-Profile Tee Connection and side wires to the pipe using tape.
 - Affix insulation.
 - Install label on the of the insulation protector.
 - Give instructions to the owner/user.

