

# Scouts Donation Drive

Educational Packet for Scouts

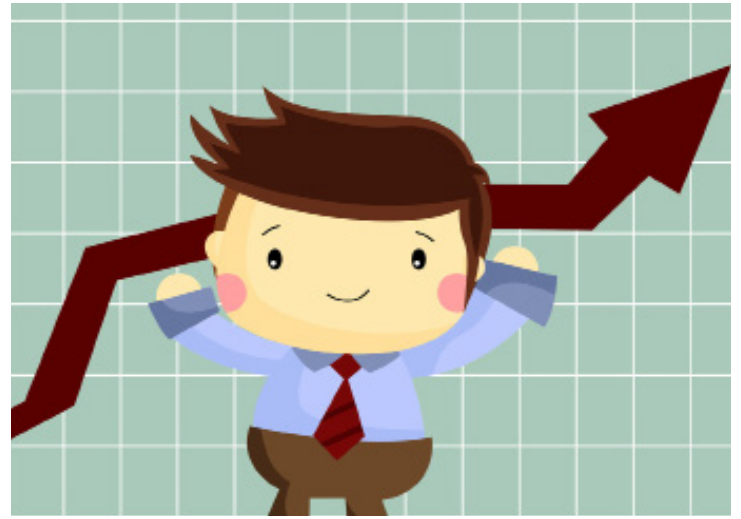


# Goodwill's Mission

## Helping Others Gain Independence

Our mission at Goodwill Keystone Area is to support persons with disabilities and other barriers to independence in achieving their fullest potential as workers and as members of the broader community.

Goodwill helps persons with disabilities, as well as people who are at an economic disadvantage or may lack education or work experience. We also provide job skills training to youth and seniors.



## Work Can Transform Lives, Build Community

Having a job means more than getting a paycheck every week. Work builds self-confidence, independence and friendships. We believe in a "hand up, not a hand out."

## Funding Our Mission

Goodwill is a social enterprise. That means that we primarily fund our mission by selling gently-used clothing and household goods in our stores. We rely on the community to donate these items.

## Our Mission Services

Our first step is to understand a person's goal, skill, ability and interest.

We design an individualized training plan that promotes personal and professional growth.

We provide people with many opportunities to develop their skills. This includes paid work training in our stores, facilities and communities.

We provide our clients with resources that help them conduct job searches, write resumes and practice interviewing skills.

And, we keep in contact with our clients after they find a job. We want to know if the person is doing well on the job, or if they need additional support.



# The Donation Cycle

## Donations Kick Off the Cycle at Goodwill

The cycle begins with **YOU** and other members of the community who generously donate clothing, shoes, housewares and furniture. Our donation centers are staffed. The donor attendant collects your donations and then provides you with a receipt. Since Goodwill is a non-profit, your donations are tax-deductible. Your parents will want the receipt for their records.



## Donations Are Sold in Our Stores

Donations are sorted, placed in our stores and then sold at affordable prices. Goodwill Keystone Area has more than 40 retail stores throughout 22 counties in Central and Southeastern Pennsylvania.

## We recycle

We recycle our unpurchased donations to minimize waste.

## Programs Help People Earn Jobs

Money earned from Goodwill stores provides funds needed to offer programs that help people in need of personal development and economic opportunities. As Goodwill serves individuals with disabilities and other barriers, they are able to join the workforce and help the local community prosper.



# The Environmental Impact of Donating

In addition to the benefits of helping Goodwill serve the community, donating also helps save the planet.

Textile is a word that is used to describe a type of cloth or woven fabric.

**90% of textile waste that goes to landfills each year is recyclable.**

Throwing away clothes is one of the biggest contributions we make to landfills today. We open up our closets, pick items we no longer need and toss them.

And where does it go? That's right — to the garbage, and from there, to the landfill.

Instead of throwing away your gently used clothing, make better use of it! Donating to Goodwill is a great way to reduce the amount of textile waste and help change that terrible statistic!



## How long does it take for items to decompose?

Leather shoes, purses and belts: 25-40 years

Thread: 3-4 months

Cotton: 1-5 months

Rope: 3-14 months

Nylon clothes: 30-40 years

Glass: 1,000,000 years

Glass bottles: 1-2 million years

Metal: 50-200 years

Plastic bottles: 70-450 years

Paper: 2-6 weeks

Computers: 1700 years

Cardboard: 2 months



# Goodwill Word Search

Can you find the hidden words? Words are written horizontally, vertically and diagonally!

W	E	A	R	T	H	E	O	G	Q	R	N	M	V	E
M	K	X	W	G	J	M	N	Y	H	E	B	B	D	P
B	D	Q	P	X	H	P	P	S	E	S	H	F	I	S
P	N	C	G	H	C	L	Q	H	A	P	F	U	R	S
A	E	C	X	O	F	O	J	L	L	E	U	T	L	O
I	N	L	K	M	Z	Y	V	Q	T	C	M	U	M	V
D	V	Z	U	E	D	M	S	X	H	T	R	R	L	H
I	I	M	K	R	T	E	O	D	Y	A	E	E	A	Z
R	R	P	D	K	O	N	C	J	R	Q	T	L	N	P
E	O	D	H	H	J	T	O	J	H	H	A	O	D	E
S	N	N	S	C	R	T	E	L	K	X	C	I	H	F
O	M	C	L	O	T	H	I	N	G	T	L	I	I	I
U	E	S	D	Y	R	I	B	T	A	N	L	Z	L	G
R	N	Q	O	Y	H	P	F	V	Z	O	Y	V	L	L
C	T	C	N	E	X	A	R	A	P	A	K	S	S	O
E	Q	L	A	U	A	E	R	O	L	L	V	Q	V	B
T	E	J	T	C	S	C	H	D	T	Q	A	K	Q	A
Z	Q	R	I	N	S	H	O	C	W	E	P	N	J	L
X	G	T	O	U	S	H	W	Z	R	A	C	Y	D	I
D	O	C	N	J	F	G	O	Z	K	N	R	T	V	H
Q	X	D	S	A	S	I	Y	P	Y	G	B	E	F	V
Y	S	O	V	R	A	B	K	T	P	Y	D	X	T	W
V	Z	Z	G	V	E	N	I	B	G	E	Z	Z	W	D
J	Z	S	U	A	O	N	Q	C	A	L	R	O	H	K
N	U	M	X	I	U	P	E	W	E	L	V	S	Y	Y
F	Y	S	S	M	M	Q	X	W	E	Z	A	M	T	B
O	C	S	M	M	X	C	T	Y	A	L	J	N	M	H
T	I	O	T	L	R	E	C	Y	A	L	E	E	C	B
M	C	Z	K	Q	T	R	A	I	N	I	N	G	X	E
C	D	O	N	O	R	S	R	H	C	N	C	F	A	E

balance  
 clothing  
 community  
 conservation  
 donations  
 donors  
 earth  
 employment  
 environment

future  
 global  
 hardware  
 healthy  
 home  
 land  
 landfills  
 life  
 mission

paid training  
 protect  
 recycle  
 renewal  
 resource  
 respect  
 retail  
 shoes  
 shoppers