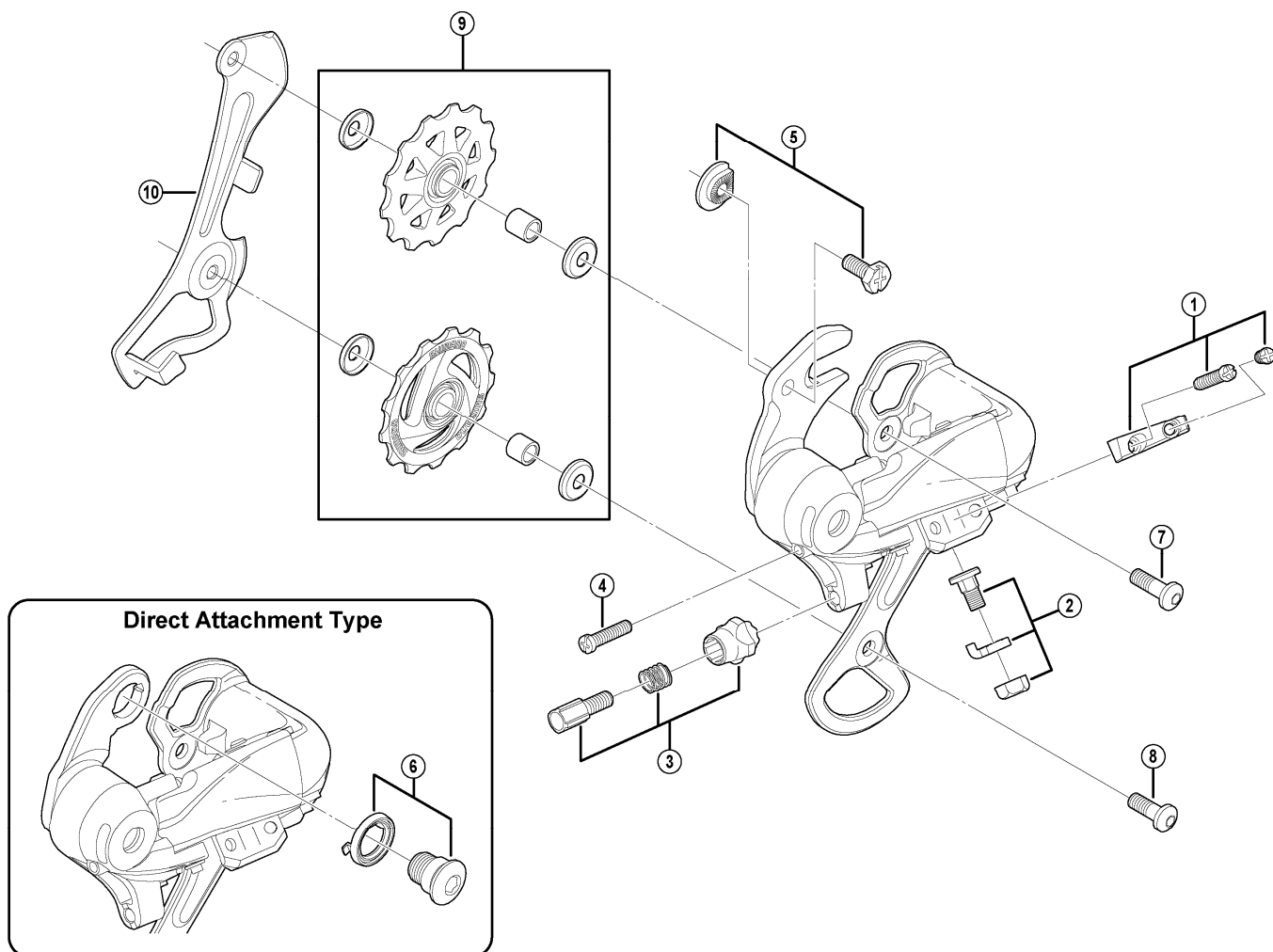


# TOURNEY Rear Derailleur RD-TX35



ITEM NO.	SHIMANO CODE NO.	DESCRIPTION	INTERCHANGEABILITY		
			RD-M360	RD-TX31	
1	Y5WS98010	Stroke Adjusting Screws (M4 x 15.3) & Plate			
2	Y5WG98010	Cable Fixing Bolt Unit	A		
3	Y5V898030	Cable Adjusting Bolt Unit		A	
4	Y5T822100	B-Tension Adjusting Screw (M4 x 17.5)		A	
5	Y54M98030	Adapter Bolt (M5 x 11.5) & Nut		A	
6	Y5WS98020	B-Axle & Spacer (Direct Attachment Type)			
7	Y5TW35010	Guide Pulley Bolt (M5 x 15.2)			
8	Y5TW35040	Tension Pulley Bolt (M5 x 13.35)			
9	Y5WS98030	Guide & Tension Pulley Unit			
10	Y5WS09000	Inner Plate			

A: Same parts.

B: Parts are usable, but differ in materials, appearance, finish, size, etc.

Absence of mark indicates non-interchangeability.

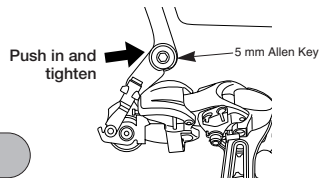
Jul.-2010-3100

© Shimano Inc. A

# Rear derailleur Adjustment Method

## RD-TX75/RD-TX55/RD-TX35

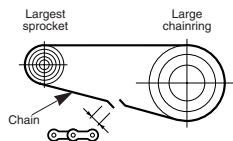
### Installation of the rear derailleur



Tightening torque:  
8 - 10 N·m {70 - 86 in. lbs.}

### Chain length

Add 2 links (with the chain on both the largest sprocket and the largest chainring)



### Cable securing and stroke adjustment

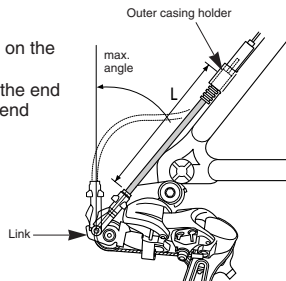
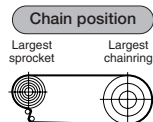
Place the outer casing so that it does not touch the basket and mudguard, otherwise it may cause a problem with the performance of the derailleur.

Set the outer casing (RD-TX75/RD-TX55) so that its length is as follows.

#### • If routing the casing upward:

(The chain should be on the largest chainring and on the largest sprocket.)

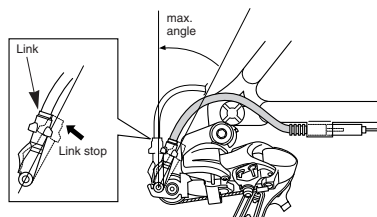
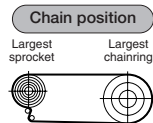
Add 10 mm to the length of the outer casing from the end that is inserted into the outer casing holder to the end which is inserted into the link.



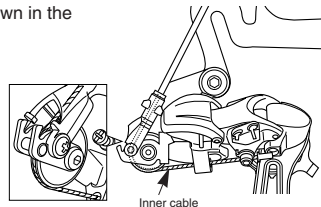
#### • If routing the casing downward:

(The chain should be on the largest chainring and on the largest sprocket.)

Set the length of the outer casing so that it describes a smooth arc, and so that the link stops in a position where there is a small gap between the link and the link stop.



Connect the inner cable to the derailleur as shown in the illustration.



This service instruction explains how to use and maintain the Shimano bicycle parts which have been used on your new bicycle.  
For any questions regarding your bicycle or other matters which are not related to Shimano parts, please contact the place of purchase or the bicycle manufacturer.

## SHIMANO

SHIMANO AMERICAN CORPORATION  
One Holland, Irvine, California 92618, U.S.A. Phone: +1-949-951-5003

SHIMANO EUROPE B.V.  
Industrieweg 24, 8071 CT Nunspeet, The Netherlands Phone: +31-341-272222

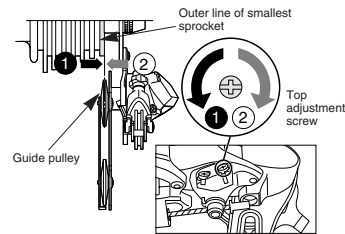
SHIMANO INC.  
3-77 Oimatsu-cho, Sakai-ku, Sakai-shi, Osaka 590-8577, Japan

\* Service Instructions in further languages are available at:  
<http://techdocs.shimano.com>

Please note: specifications are subject to change for improvement without notice. (English)  
© Mar. 2010 by Shimano Inc. XBC IZM Printed in Singapore.

### 1. Top adjustment

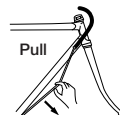
Turn the top adjustment screw to adjust so that the guide pulley is below the outer line of the smallest sprocket when looking from the rear.



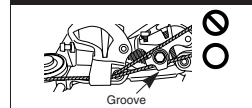
### 2. Connection and securing of cable

Connect the cable to the rear derailleur and, after taking up the initial slack in the cable, reattach to the rear derailleur as shown in the illustration.  
Secure the cable by pulling it with pliers with a force of 5 - 10 kg.

Tightening torque:  
5 - 7 N·m {44 - 60 in. lbs.}

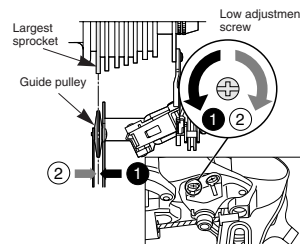


Note: Be sure that the cable is securely in the groove.



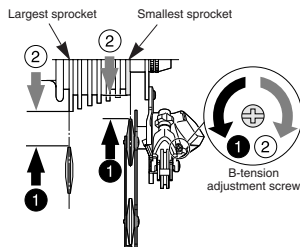
### 3. Low adjustment

Turn the low adjustment screw so that the guide pulley moves to a position directly below the largest sprocket.



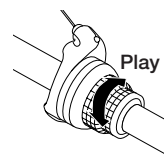
### 4. How to use the B-tension adjustment screw

Mount the chain on the smallest chainring and the largest sprocket, and turn the crank arm backward. Then turn the B-tension adjustment screw to adjust the guide pulley as close to the sprocket as possible but not so close that it touches. Next, set the chain to the smallest sprocket and repeat the above to make sure that the pulley does not touch the sprocket.

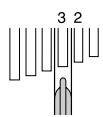


### SIS Adjustment

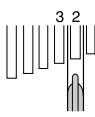
Operate the shifting lever several times to move the chain to the 2nd sprocket. Then, while pressing the lever just enough to take up the play in the lever, turn the crank arm.



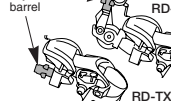
When shifting to 3rd



When no sound at all is heard



RD-TX75  
RD-TX55



Tighten the outer cable adjusting barrel until the chain returns to the 2nd sprocket. (clockwise)

RD-TX75  
RD-TX55

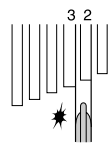


Loosen the outer casing adjustment barrel until the chain touches the 3rd sprocket and makes noise. (counter clockwise)

### Best setting

The best setting is when the shifting lever is operated just enough to take up the play and the chain touches the 3rd sprocket and makes noise.

\* Return the lever to its original position (the position where the lever is at the 2nd sprocket setting and it has been released) and then turn the crank arm clockwise. If the chain is touching the 3rd sprocket and making noise, turn the outer casing adjustment barrel clockwise slightly to tighten it until the noise stops and the chain runs smoothly.



For the best SIS performance, periodically lubricate all power-transmission parts.