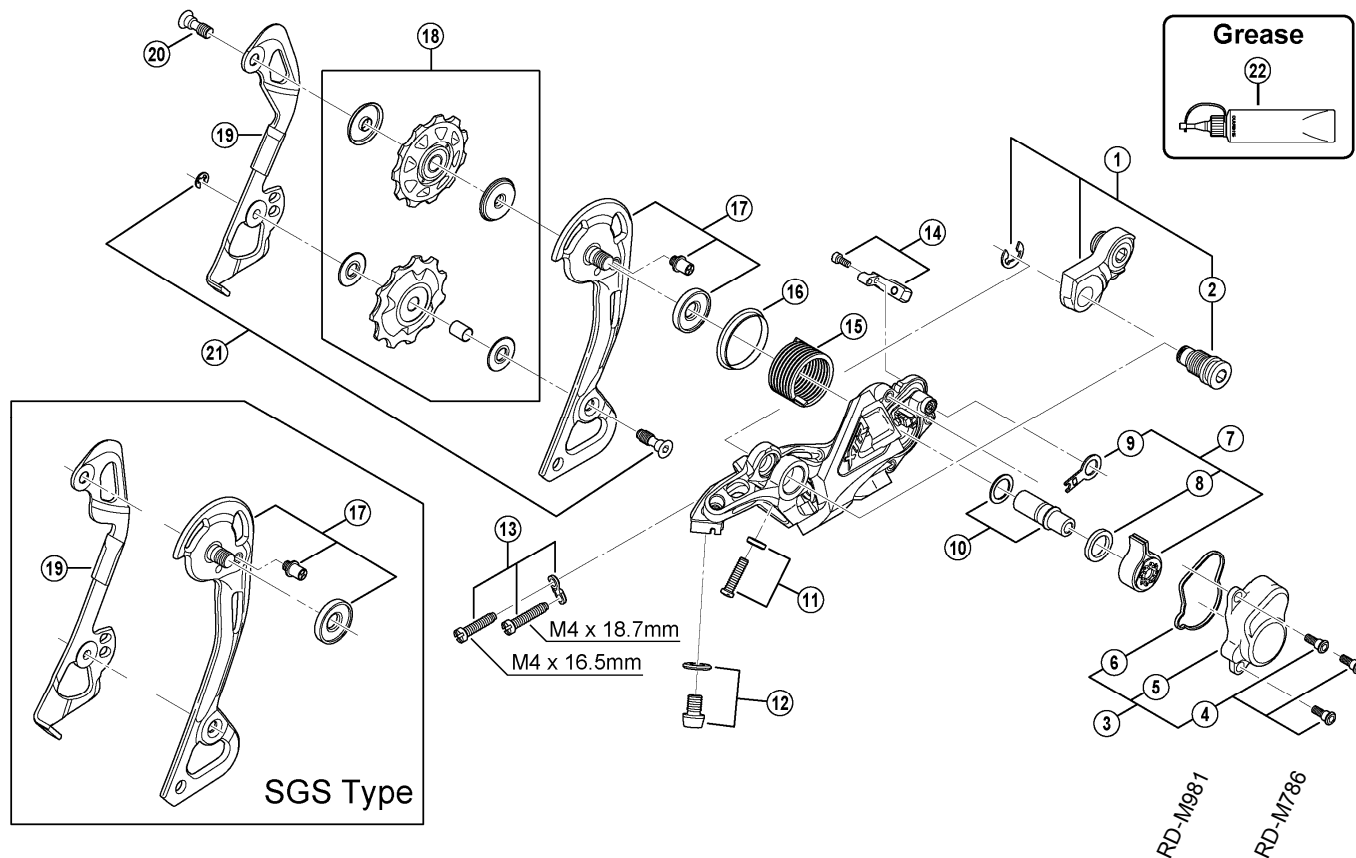


# XTR Rear Derailleur

## RD-M986 (GS) Long Cage

## RD-M986 (SGS) Super Long Cage



ITEM NO.	SHIMANO CODE NO.	DESCRIPTION	INTERCHANGEABILITY		
1	Y5XY98010	Bracket Axle Unit (for Normal Type)	A		
2	Y5XY14000	B-Axle 2 (for Direct Mount Type)	A		
3	Y5XD98010	P-Cover Unit			
4	Y5XD98020	P-Cover Bolt Set (3 pcs.)			
5	Y5XD20000	P-Cover			
6	Y5XD21000	P-Cover Packing			
7	Y5XD98030	Stabilizer Unit			
8	Y5XD38000	P-Axle Washer 2			
9	Y5XD35000	Switch Stabilizer			
10	Y5XD98050	P-Axle Unit & Washer			
11	Y5XC98040	B-Tension Adjusting Screw (M4 x 15.1) & Plate	A		
12	Y5XC98050	Cable Fixing Bolt (M6 x 8) & Plate	A		
13	Y5WJ98020	Adjusting Screws & Plate	A		
14	Y5XD98070	Switch Lever Unit & Bolt (M2.6 x 6)			
15	Y5XD19000	P-Tension Spring			A
16	Y5XD15000	P-Seal Ring			A
17	Y5XD98090	Outer Plate Assembly (GS-Type)			
	Y5XD98100	Outer Plate Assembly (SGS-Type)			
18	Y5XC98110	Guide & Tension Pulley Unit	A		
19	Y5XC09000	Inner Plate (GS-Type)	A		B
	Y5XC10000	Inner Plate (SGS-Type)	A		
20	Y5WJ21000	Guide Pulley Bolt	A		
21	Y5XC98100	Tension Pulley Bolt & Stop Ring	A		
22	Y04120800	Grease for Stabilizer (Net. 100g)			

A: Same parts.

B: Parts are usable, but differ in materials, appearance, finish, size, etc.

Absence of mark indicates non-interchangeability.

May.-2012-3430

© Shimano Inc. A

Specifications are subject to change without notice.

# SHIMANO

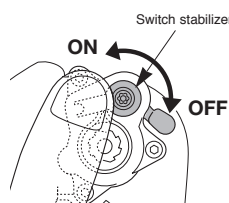
## General Safety Information

**WARNING**

Be sure to wear safety glasses or goggles to protect your eyes while working.

**CAUTION**

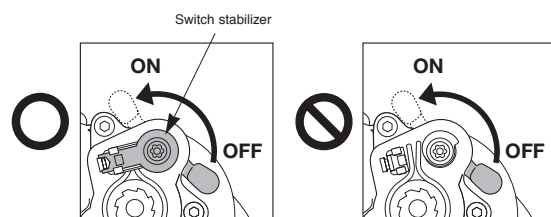
- If operating the lever switch while the plate unit cover is removed, press the switch stabilizer with your finger so that it does not fly out.



- When installing and removing the plate and the plate unit, be careful to avoid injury such as getting your fingers caught by the strong reaction force of the plate tension spring.

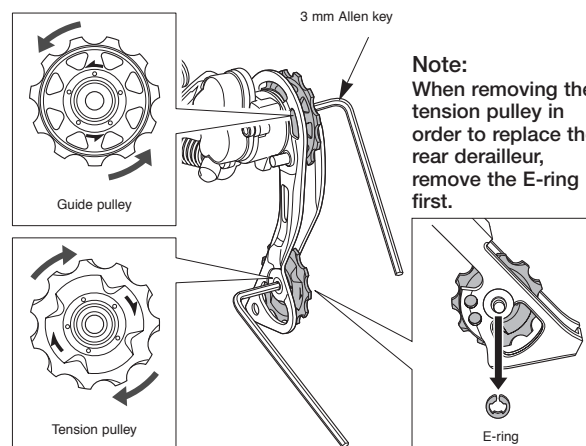
**CAUTION**

- If you move the lever switch from OFF to ON while the switch stabilizer is removed, it may damage the product.



- Be sure to install the plate unit cover before riding the bicycle.

## Replacement of the pulley



**Note:**  
When removing the tension pulley in order to replace the rear derailleur, remove the E-ring first.

Guide pulley / Tension pulley  
Tightening torque :  
2.5 - 5.0 N·m {22 - 44 in. lbs.}

## Replacement of the plate and the plate tension spring

## &lt; Disassembly &gt;

- Remove the plate stopper pin.

Tightening torque :  
1 N·m {9 in. lbs.}

- Phillips screwdriver #2

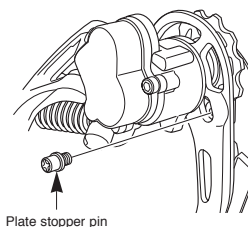
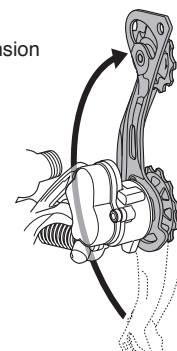


Plate stopper pin

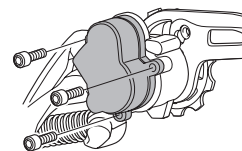
- Turn the plate to loosen the plate tension spring as shown in the illustration.



- Remove the plate unit cover bolt.

Tightening torque :  
1 - 1.5 N·m {9 - 13 in. lbs.}

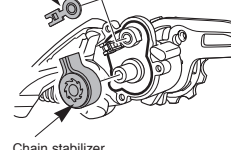
- 2 mm Allen key



- Remove the switch stabilizer.

Switch stabilizer

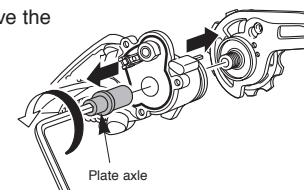
- Remove the chain stabilizer.



Chain stabilizer

- Use a 4 mm Allen key to remove the plate axle.

Tightening torque :  
8 - 10 N·m {70 - 86 in. lbs.}

**CAUTION**

When installing and removing the plate and the plate unit, be careful to avoid injury such as getting your fingers caught by the strong reaction force of the plate tension spring.

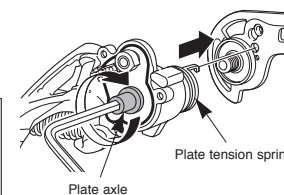
## &lt; Assembly &gt;

Reassemble by carrying out the disassembly procedure in reverse.

**Note:**

When reassembling, insert the end of the plate tension spring into the groove in the plate.

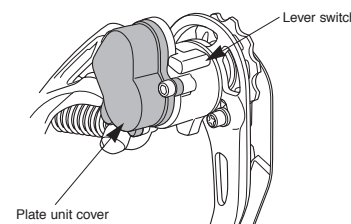
Be sure to install the switch stabilizer. If you try to operate the lever switch without the switch stabilizer installed, it will damage the product.



## Friction adjustment

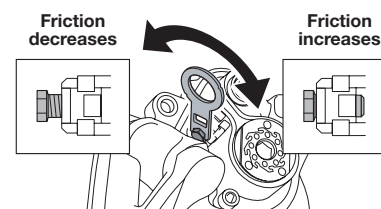
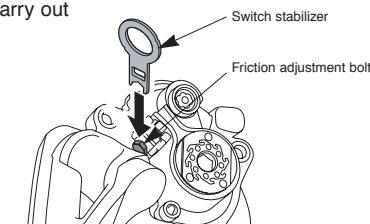
The friction amount can be adjusted as desired. Furthermore, you can also adjust after a change of the friction occurs during use.

- Set the lever switch to OFF.



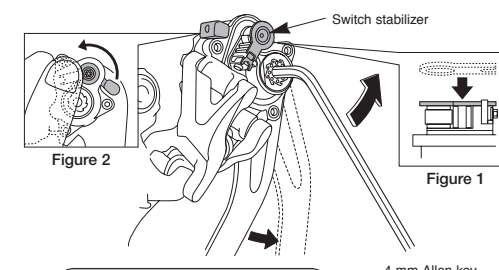
- Remove the plate unit cover.
- Remove the switch stabilizer.
- Move the friction adjustment bolt to adjust the friction.

\* The switch stabilizer can be used as a tool to carry out the adjustment.



- Check the friction torque.

- Securely install the switch stabilizer as shown in Figure 1.
- While pressing the switch stabilizer with your finger as shown in Figure 2, set the lever switch to the ON position and check the friction torque.
- \* If adjusting the friction once more, be sure to set the lever switch to the OFF position while pressing the switch stabilizer with your finger before making the adjustment.



Friction torque:  
3.5 - 5.4 N·m {30 - 47 in. lbs.}

- Check that the switch stabilizer is securely installed.

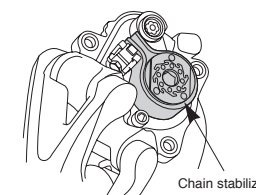
- Install the plate unit cover.

Tightening torque:  
1 - 1.5 N·m {9 - 13 in. lbs.}

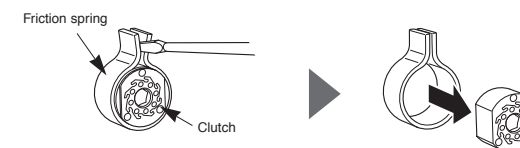
## Applying grease to the chain stabilizer

If the friction changes or noise is generated, the grease may have become discolored or may have disappeared. Apply more grease.

- After carrying out steps 1, 2 and 3 in "Friction adjustment", remove the chain stabilizer.



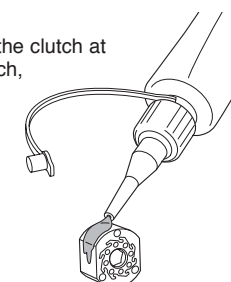
- Use a flat-tipped screwdriver or similar tool to separate the friction spring and the clutch. Be careful not to bend the friction spring with the tip of the flat-tipped screwdriver at this time.



- Apply grease to the clutch.

Make sure that no grease gets inside the clutch at this time. If grease gets inside the clutch, it will cause the clutch to malfunction.

Grease number: Y04120800



Reassemble by carrying out the disassembly procedure in reverse.

## Maintenance

RD-M985

\* Move the lever switch to the OFF position before carrying out maintenance.

\* Service Instructions in further languages are available at :  
<http://techdocs.shimano.com>

Please note: specifications are subject to change for improvement without notice. (English)

**WARNING**

**"Maintenance interval depends on the usage and riding circumstances. Clean regularly the chain with an appropriate chaincleaner. Never use alkali based or acid based solvents such as rust cleaners. If those solvent be used chain might break and cause serious injury."**

**• In order to obtain good gear shifting performance, this chain has a forward side and a reverse side, and the sides are marked so that the chain will face the correct way when installed. The proper design performance will be obtained when the chain is installed so that it faces the correct way. If it is installed so that it faces the opposite way, the chain may come off and the bicycle may fall over and serious injury may occur as a result.**

• Use the reinforced connecting pin only for connecting the narrow type of chain.

• If connecting pins other than reinforced connecting pins are used, or if a reinforced connecting pin or tool which is not suitable for the type of chain is used, sufficient connection force may not be obtained, which could cause the chain to break or fall off.

Chain	Reinforced connecting pin	Chain tool
10-speed super narrow chain for MTB	with groove (3)	TL-CN32
	with groove (2)	TL-CN23 TL-CN27

• Make sure that the connecting pin is aligned with the outer link surface from the side that the pin is inserted. It should feel smooth and flush when you run your finger over it. The pin will protrude slightly on the backside after the break off pin is removed.

• If it is necessary to adjust the length of the chain due to a change in the number of sprocket teeth, make the cut at some other place than the place where the chain has been joined using a reinforced connecting pin. The chain will be damaged if it is cut at a place where it has been joined with a reinforced connecting pin.

• Check that the tension of the chain is correct and that the chain is not damaged. If the tension is too weak or the chain is damaged, the chain should be replaced. If this is not done, the chain may break and cause serious injury.

• Obtain and read the service instructions carefully prior to installing the parts. Loose, worn or damaged parts may cause the bicycle to fall over and serious injury may occur as a result. We strongly recommend only using genuine Shimano replacement parts.

• Obtain and read the service instructions carefully prior to installing the parts. If adjustments are not carried out correctly, the chain may come off and this may cause you to fall off the bicycle which could result in serious injury.

• Read these Technical Service Instructions carefully, and keep them in a safe place for later reference.

**CAUTION**

• When installing and removing the plate and the plate unit, be careful to avoid injury such as getting your fingers caught by the strong reaction force of the plate tension spring.

**Note**

• If gear shifting operations do not feel smooth, wash the derailleur and lubricate all moving parts.  
• If the amount of looseness in the links is so great that adjustment is not possible, you should replace the derailleur.  
• You should periodically clean the derailleur and lubricate all moving parts (mechanism and pulleys).

• If gear shifting adjustment cannot be carried out, check the degree of parallelism at the rear end of the bicycle. Also check if the cable is lubricated and if the outer casing is too long or too short.

• If you hear abnormal noise as a result of looseness in a pulley, you should replace the pulley.  
• You should periodically wash the sprockets in a neutral detergent and then lubricate them again. In addition, cleaning the chain with neutral detergent and lubricating it can be an effective way of extending the useful life of the sprockets and the chain.

• If the chain keeps coming off the sprockets during use, replace the sprockets and the chain.  
• Use a frame with internal cable routing is strongly discouraged as it has tendencies to impair the SIS shifting function due to its high cable resistance.

• Always be sure to use the sprocket set bearing the same group marks. Never use in combination with a sprocket bearing a different group mark.

• Use an outer casing which still has some length to spare even when the handlebars are turned all the way to both sides. Furthermore, check that the shifting lever does not touch the bicycle frame when the handlebars are turned all the way.

• A special grease is used for the gear shifting cable. Do not use DURA-ACE grease or other types of grease, otherwise they may cause deterioration in gear shifting performance.

• Grease the inner cable and the inside of the outer casing before use to ensure that they slide properly.

• For smooth operation, use the specified outer casing and the bottom bracket cable guide.  
• Operation of the levers related to gear shifting should be made only when the front chainwheel is turning.

• The guide pulley has an arrow on it to indicate the direction of rotation. Install the guide pulley so that the arrow is pointing counterclockwise when looking at the outer side of the derailleur.

• The tension pulley has an arrow on it to indicate the direction of rotation. Install the tension pulley so that the arrow is pointing clockwise when looking at the outer side of the derailleur.

• Parts are not guaranteed against natural wear or deterioration resulting from normal use.  
• For maximum performance we highly recommend Shimano lubricants and maintenance products

• For any questions regarding methods of installation, adjustment, maintenance or operation, please contact a professional bicycle dealer.

• The guide pulley has an arrow on it to indicate the direction of rotation. Install the guide pulley so that the arrow is pointing counterclockwise when looking at the outer side of the derailleur.

• The tension pulley has an arrow on it to indicate the direction of rotation. Install the tension pulley so that the arrow is pointing clockwise when looking at the outer side of the derailleur.

• Parts are not guaranteed against natural wear or deterioration resulting from normal use.  
• For maximum performance we highly recommend Shimano lubricants and maintenance products

• For any questions regarding methods of installation, adjustment, maintenance or operation, please contact a professional bicycle dealer.

This service instruction explains how to use and maintain the Shimano bicycle parts which have been used on your new bicycle. For any questions regarding your bicycle or other matters which are not related to Shimano parts, please contact the place of purchase or the bicycle manufacturer.

**SHIMANO**

SHIMANO AMERICAN CORPORATION  
One Holland, Irvine, California 92618, U.S.A. Phone: +1-949-951-5003

SHIMANO EUROPE B.V.  
Industrieweg 24, 8071 CT Nunspeet, The Netherlands Phone: +31-341-272222

SHIMANO INC.  
3-77 Oimatsu-cho, Sakai-ku, Sakai-shi, Osaka 590-8577, Japan

\* Service Instructions in further languages are available at : <http://techdocs.shimano.com>

Please note: specifications are subject to change for improvement without notice. (English)  
© Nov. 2010 by Shimano Inc. XBC SZK Printed in Japan.

**RD-M985**

Rear derailleur

In order to realize the best performance, we recommend that the following combination be used.

Series	XTR
RAPIDFIRE (Shifting lever)	SL-M980 / SL-M980-I
Outer casing	OT-SP41*
Rear derailleur	RD-M985
Type	SGS / GS
Freehub	FH-M985 / FH-M988
Gears	10
Cassette sprocket	CS-M980
Chain	CN-M980
Bottom bracket guide	SM-SP17 / BT17

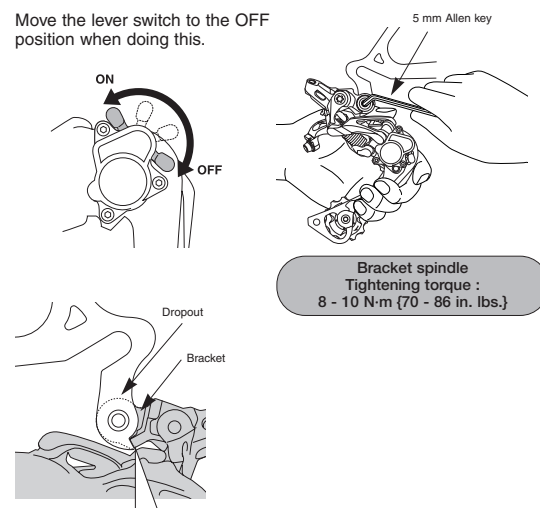
\* It is recommended that you use the sealed outer cap with tongue.

**Specifications**

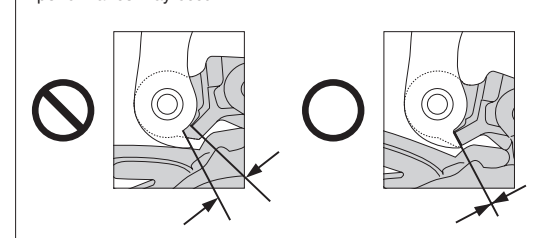
Rear Derailleur	RD-M985	
Model number	RD-M985	
Type	SGS	GS
Gears	10	10
Total capacity	41T	35T
Applicable sprocket combination	11 - 32T, 11 - 34T, 11 - 36T	
Smallest sprocket	11T	11T
Front chainwheel tooth difference	18T	18T

**Installation of the rear derailleur**

Move the lever switch to the OFF position when doing this.



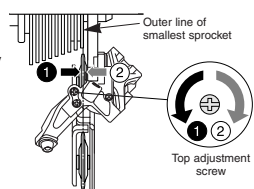
**Note:** Periodically check that there is no gap between the dropout and the bracket as shown in the illustration. If there is a gap between these two parts, problems with gear shifting performance may occur.



**SIS Adjustment**

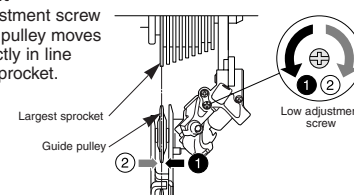
**1. Top adjustment**

Turn the top adjustment screw to adjust so that the guide pulley is in line with the outer line of the smallest sprocket when looking from the rear.



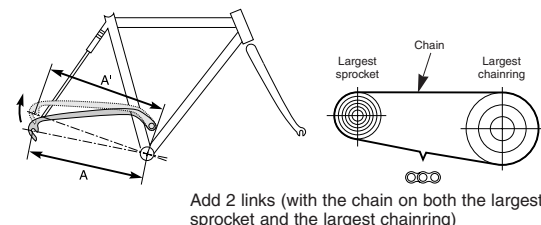
**2. Low adjustment**

Turn the low adjustment screw so that the guide pulley moves to a position directly in line with the largest sprocket.



**3. Chain length on bicycles with rear suspension**

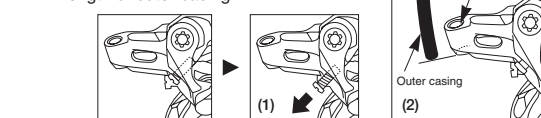
The length of A will vary depending on the movement of the rear suspension. Because of this, an excessive load may be placed on the drive system if the chain length is too short. Set the length of the chain by adding two links to the chain when the rear suspension is at a position where dimension "A" is longest and the chain is on the largest sprocket and the largest chainring. If the amount of movement of the rear suspension is large, the slack in the chain may not be taken up properly when the chain is on the smallest chainring and smallest sprocket.



**4. Outer casing length**

(1) Loosen the B-tension adjustment screw until it is in the position shown in the illustration.

(2) Check that there is enough slack in the outer casing. Next, align the outer casing with the bottom edge of the outer casing holder at the rear derailleur and then cut off any excess length of outer casing.

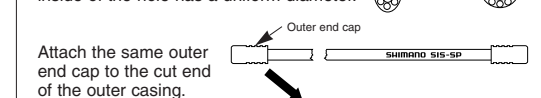


**Note:**

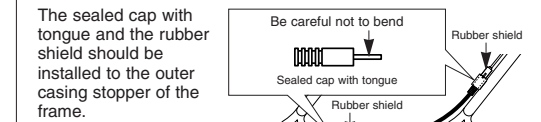
The distance between the outer stopper to the outer casing holder of the rear derailleur may change when the rear suspension moves, so determine the length of the outer casing at the point where this length is at its greatest.

**Cutting the outer casing**

When cutting the outer casing, cut the opposite end to the end with the marking. After cutting the outer casing, make the end round so that the inside of the hole has a uniform diameter.



Attach the same outer end cap to the cut end of the outer casing.



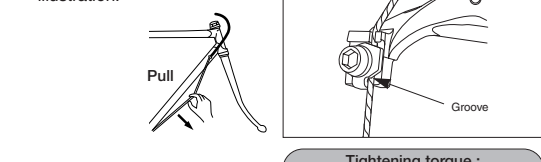
The sealed cap with tongue and the rubber shield should be installed to the outer casing stopper of the frame.

\* If the rear derailleur moves to a large degree, such as in bicycles with rear suspension, it is recommended that you replace the cap with the accessory aluminum cap.

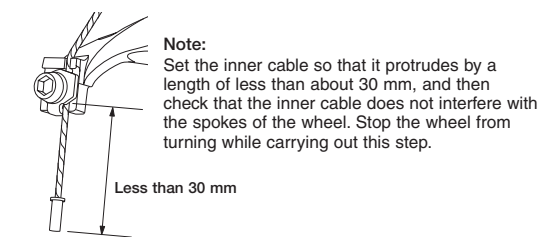
The end of the outer casing which has the aluminum cap should be at the derailleur side.



Connect the cable to the rear derailleur and, after taking up the initial slack in the cable, re-secure to the rear derailleur as shown in the illustration.



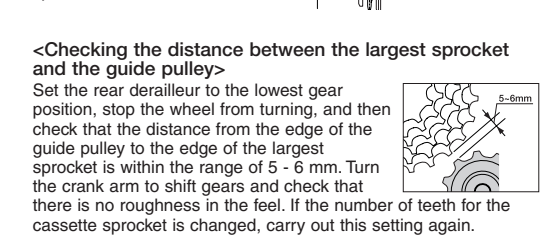
**Tightening torque :** 6 - 7 N·m {52 - 60 in. lbs.}



**Note:** Set the inner cable so that it protrudes by a length of less than about 30 mm, and then check that the inner cable does not interfere with the spokes of the wheel. Stop the wheel from turning while carrying out this step.

**5. How to use the B-tension adjustment screw**

Mount the chain on the smallest chainring and the largest sprocket, and turn the crank arm to shift gears. Then turn the B-tension adjustment screw to adjust so that the guide pulley does not interfere with the sprocket but not so close that it touches the chain. Next, set the chain to the smallest sprocket and repeat the above to make sure that the pulley does not touch the sprocket.

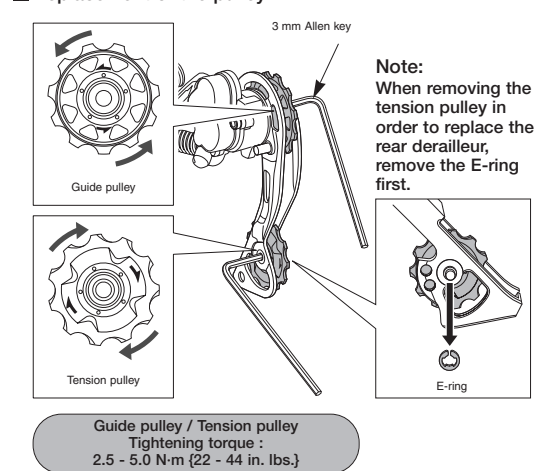


<Checking the distance between the largest sprocket and the guide pulley>  
Set the rear derailleur to the lowest gear position, stop the wheel from turning, and then check that the distance from the edge of the guide pulley to the edge of the largest sprocket is within the range of 5 - 6 mm. Turn the crank arm to shift gears and check that there is no roughness in the feel. If the number of teeth for the cassette sprocket is changed, carry out this setting again.



**Maintenance**

**Replacement of the pulley**

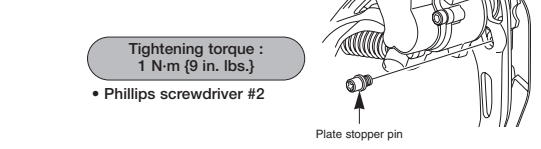


**Guide pulley / Tension pulley**  
**Tightening torque :** 2.5 - 5.0 N·m {22 - 44 in. lbs.}

**Replacement of the plate and the plate tension spring**

**< Disassembly >**

1. Remove the plate stopper pin.



**Tightening torque :** 1 N·m {9 in. lbs.}

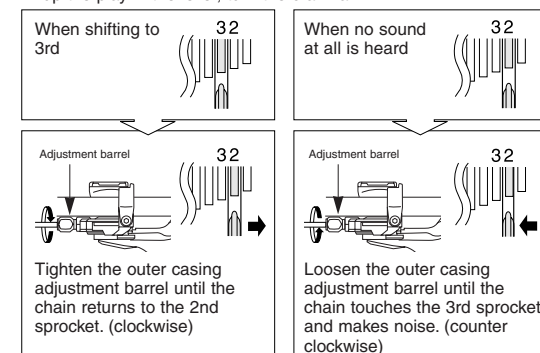
• Phillips screwdriver #2

2. Turn the plate to loosen the plate tension spring as shown in the illustration.



**6. SIS Adjustment**

Carry out the adjustment while the lever switch is in the OFF position. Operate the shifting lever several times to move the chain to the 2nd sprocket. Then, while pressing the lever just enough to take up the play in the lever, turn the crank arm.

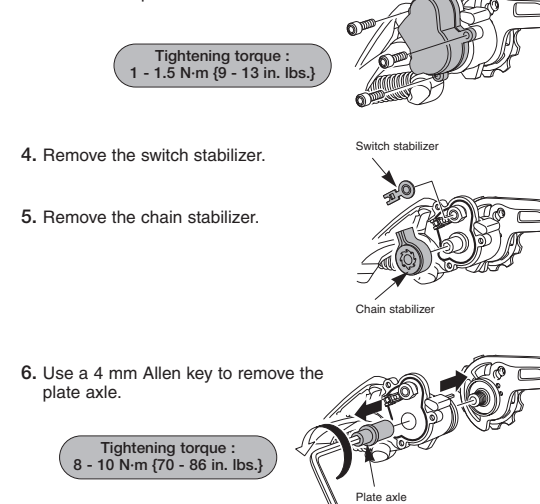


**Best setting**  
The best setting is when the shifting lever is operated just enough to take up the play and the chain touches the 3rd sprocket and makes noise.  
\* Return the lever to its original position (the position where the lever is at the 2nd sprocket setting and it has been released) and then turn the crank arm clockwise. If the chain is touching the 3rd sprocket and making noise, turn the outer casing adjustment barrel clockwise slightly to tighten it until the noise stops and the chain runs smoothly.  
Operate lever to change gears, and check that no noise occurs in any of the gear positions.  
Set the lever switch to ON, and then ride the bicycle normally and check that there are no problems with gear shifting.

For the best SIS performance, periodically lubricate all power-transmission parts.

**Maintenance**

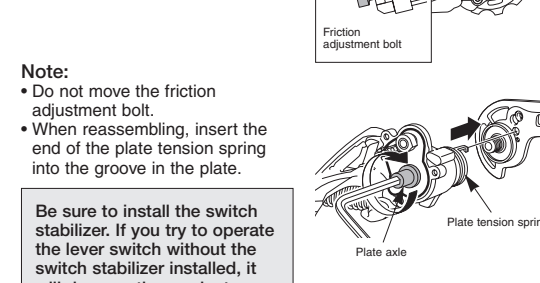
\* Move the lever switch to the OFF position before carrying out maintenance.



**Tightening torque :** 1 - 1.5 N·m {9 - 13 in. lbs.}

**CAUTION**  
When installing and removing the plate and the plate unit, be careful to avoid injury such as getting your fingers caught by the strong reaction force of the plate tension spring.

**< Assembly >**  
Reassemble by carrying out the disassembly procedure in reverse.



**Note:**  
• Do not move the friction adjustment bolt.  
• When reassembling, insert the end of the plate tension spring into the groove in the plate.  
**Be sure to install the switch stabilizer. If you try to operate the lever switch without the switch stabilizer installed, it will damage the product.**