

EPSON®
EXCEED YOUR VISION



All-in-One

Print | Copy | Scan | Photo

Epson Stylus®
TX210

Individual Ink Cartridges, Water and Smudge Resistant Prints

- DURABrite® Ultra resin coated pigment ink
—Water and smudge resistant prints
- 4 individual ink cartridges
—Only replace the colour you use
- 1.5" LCD viewer for photo viewing & editing

All-in-One

Print | Copy | Scan | Photo

Epson Stylus® TX210

Versatile and Efficient Features, Long-Lasting and Affordable Prints

Feature-packed and with amazing print quality, the Epson Stylus® TX210 offers efficiency and value.

PC-free Printing for Greater Convenience

Enjoy effortless PC-free printing with the Epson Stylus® TX210 with multi-format card slots and a 1.5" LCD viewer.



Low Cost Individual Ink Cartridges

Save money with the Epson Stylus® TX210 because you only replace the colour you use.



Long-lasting Prints with Epson DURABrite® Ultra Inks

With Epson DURABrite® Ultra Ink is renowned for its smudge, fade and water-resistant qualities, but you can also be assured of sharp black text and glossy photos to meet both your general and photo printing needs.



Superior Print Speeds for Time Efficiency

Improve your productivity with the Epson Stylus® TX210:

- Print speed of up to 32 ppm
- Copy speed of up to 32 ppm
- Photo print speed of approximately 48 seconds

High Resolution for Best Print Quality

With a high resolution of 5760 dpi, you are always assured of high quality printouts. The Epson Stylus® TX210 is also capable of producing quality borderless photo prints, making it a convenient tool for your creative photo projects.



Without
Epson DURABrite® Ultra Ink



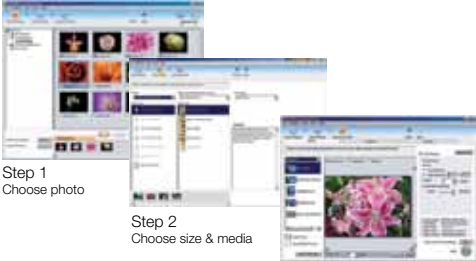
With
Epson DURABrite® Ultra Ink

Photo Perfection with Epson Creativity Suite

The Epson Stylus® TX210 comes with powerful and easy to use photo and document management software including:

Epson Easy Photo Print

Achieve photo lab quality prints in just 3 steps with this easy to use software.



Dust Removal Tool

Easily achieve that beautiful print with the one-click dust removal tool.

Epson PhotoEnhance

Epson PhotoEnhance gives you beautiful and natural prints with automatic adjustments of skin tones, colour casts and exposure levels.

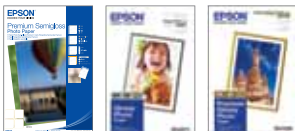


Red Eye Correction

Pictures with red eye effect can be easily corrected at a click of a button.



Partners in Perfection



Epson specialty media is developed to complement Epson genuine inks in producing exceptionally high quality prints.



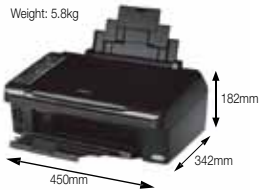
Epson inks are designed specifically to work with your Epson printer to deliver stable, long-lasting prints.

All-in-One

Print | Copy | Scan | Photo

Epson Stylus® TX210

Weight: 5.8kg



*To use USB port, your PC must conform to PC98 specifications, and have Windows preinstalled. Consult the documentation provided with your PC for further information about USB connectivity. Note also that printing errors may occur if non-standard cables or more than 2 USB hub connections are used.



* Print speed (PPM) when printed on A4 plain paper in the fastest mode. 10x15cm photo print speed when printed on Epson Premium Glossy Photo Paper in default mode. Print speed may vary depending on system configuration, print mode, document complexity, software, type of paper used and connectivity. Print speed does not include processing time on host computer.



** Copy speed (CPM) when printed on plain paper in the fastest mode. Copy speed may vary depending on copy mode, document complexity, type of paper used and number of copies.

EPSON is the registered trademark of SEIKO EPSON CORPORATION.
All other product names and other company names used herein are for identification purpose only and may be the trademarks or registered trademarks of their respective owners. EPSON disclaims any and all rights in those marks. Scan/Print samples shown herein are simulations. Specifications are subject to change without notice.

EPSON®

EXCEED YOUR VISION

www.epson.com.au

www.epson.co.nz

Visit www.epson.com.au or www.epson.co.nz for more details.

SPECIFICATIONS

PRINTER TYPE

PRINTING METHOD On-demand ink jet (piezoelectric)

PRINT QUALITY

MAXIMUM RESOLUTION 5760 dpi with Variable-Sized Droplet Technology
MINIMUM INK DROPLET VOLUME 4 pl

PRINT SPEED*

BLACK TEXT MEMO (A4) Approx. 32 ppm
COLOUR TEXT MEMO (A4) Approx. 15 ppm
PHOTO 4x6in (10x15cm) (Borderless) Approx. 72 secs

COPY SPEED**

BLACK TEXT MEMO (A4) Approx. 32 cpm
COLOUR TEXT MEMO (A4) Approx. 9 cpm

SCAN TECHNOLOGY

SCANNER TYPE A4 Flatbed colour image scanner
SENSOR TYPE CIS
OPTICAL RESOLUTION 1200 x 2400 dpi
PIXEL DEPTH 48 bits input (16 bits/colour), 24 bits output (8 bits/colour)

SCANNING SPEED

MONOCHROME
A4 300 dpi 2.2 m sec/line
A4 600 dpi 7.2 m sec/line
A4 1200 dpi 8.8 m sec/line

COLOUR

A4 300 dpi 7.2 m sec/line
A4 600 dpi 13.1 m sec/line
A4 1200 dpi 26.2 m sec/line

73HN INK SERIES (HIGH CAPACITY)

BLACK INK CARTRIDGE 380 pages[^]

73HN INK SERIES (STANDARD CAPACITY)

BLACK INK CARTRIDGE 245 pages[^]

CYAN INK CARTRIDGE

MAGENTA INK CARTRIDGE 320 pages[^] (Composite Yield)

YELLOW INK CARTRIDGE [^]Based on ISO/IEC 24711 & 24712 Test Suite

INTERFACE

USB - Compatible with the USB 2.0 Specification (cable included)

CARD SLOTS CF Type II, Memory Stick, SD/MMC, XD-Picture card

PAPER HANDLING

PAPER HOLD CAPACITY

Input capacity: 120 sheets, A4 Plain paper (64 g/m²)

PAPER SIZE

A4, Letter, Legal, 8x10", 5x7", 4x6", 3.5x5", 5x8", Half Letter, Envelopes: No.10, DL, C6

NOISE LEVEL

5.3 B, 37.7 dB(A) (ISO9296)

ELECTRICAL SPECIFICATIONS

Rated Voltage AC 220-240 V

Rated Frequency 50-60 Hz

Power Consumption Approx. 11 W (Stand alone copying) ISO/IEC 24712

2.5 W (Sleep Mode)

PRINTER SOFTWARE ON CD-ROM

PRINTER DRIVERS

Windows® 7/ 7x64/ Vista/ Vista64/ XP/ XP64/ 2000

Mac® OS 10.3.9

Epson File Manager

Epson Scan Assist

Epson Attach to Email

Epson Easy Photo Print

Epson Web-To-Page

Online Guide

SOFTWARE TOOLS

LIGHTFASTNESS

LIGHTFASTNESS

120 years on Epson Matte Paper - Heavyweight*

Light Source

Fluorescent light

Intensity

70 k lux

Temperature

24°C

Humidity

60 % RH

Glass Mount

2 mm, soda lime

Fade Criteria

Pure YMC 30 % loss at OD=1

Display Life Calculation

Total illuminance/ (500 lux x 10 hours x 365 days = 1 year)

Tests developed and conducted by Epson under fluorescent light (indoor display conditions) with glass mount. The data is calculated by Epson's accelerated testing of prints on speciality media.

Better Products for a Better Future