

SURVEILLANCE VIDEO AT A GLANCE

Security is a huge concern for today's home and small business owner. With such a bewildering number of system options available, B&H can help you find the perfect solution to fit your needs and budget.

GETTING STARTED A CCTV (Closed Circuit Television) system consists of a camera and monitor. Choose your wire (see the "UTP or Coax" box, opposite) and connect these components. Plug the camera into a power supply. Congratulations! You've just built a CCTV system.

WHAT IF YOU CAN'T ALWAYS WATCH THE CAMERAS? You'll need to record the video stream from the cameras. In the past, special VCR's with time-lapse capability were popular. You'd program them to record so many pictures (or frames) per minute; a lower frame rate allowed more video to fit onto a single VHS tape. Otherwise, recording to VHS tape could get expensive quickly. The trade-off was that more compressed video rendered fewer details, because only a few pictures per minute were recorded. VCR's only recorded one channel of video, too. For multiple cameras, you'd have to connect the VCR to a "mux," or multiplexer, splitting the screen into 4, 9, or 16 segments, one for each camera. Picture detail was almost imperceptible.

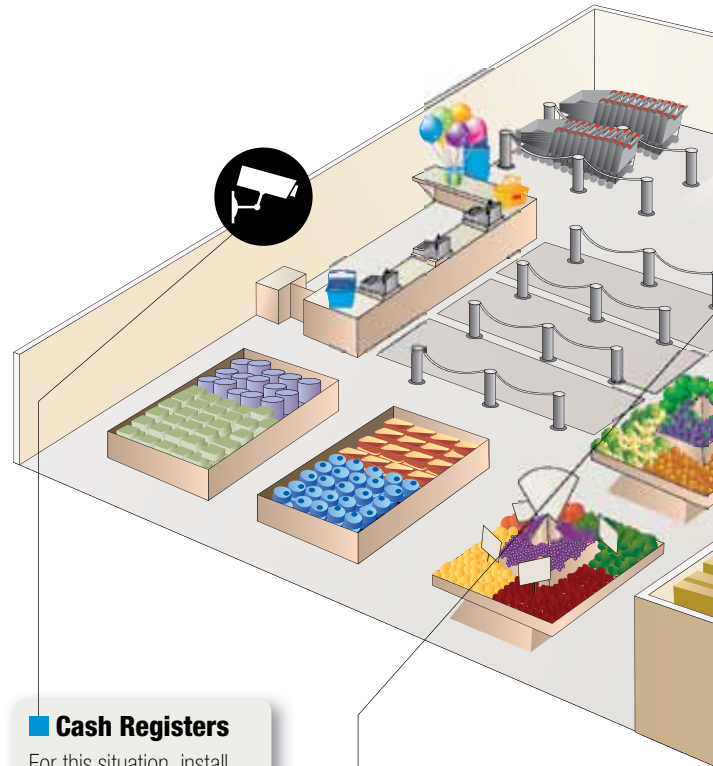
ENTER DVRS Digital Video Recorders (DVR's) were a huge step forward. These are essentially computers that record video to hard drives. Hard drives cost much less than their equivalent in VHS tape, and DVRs can also record multiple cameras. Video storage used to be measured in hours; it's now measured in days, weeks—even months. DVRs use video data processors to compress the video, cramming more video into the same amount of space, storing higher and higher frame rates (FPS or frames per second). 24 FPS is reckoned as "real time." Even 12 FPS seems close to real time. Many security pros use 7.5 FPS as the standard recording rate. Many DVR's have IP connections as well, allowing Internet connectivity via a PC and a router. As of this writing, Mac-compatible DVR's are rare.

THE CAMERAS Choose the right camera. Will it always be dark? Will you need a camera to enhance available light? Outdoor cameras should have infrared illuminators to allow night vision. Will part of the picture be very brightly lit and partly dark? A camera with Wide Dynamic Range (WDR) and dual shutter speeds will take each zone of the picture and expose it properly, allowing you to see a complete image of bright and dark areas.

FIXED VS. PTZ PTZ (Pan Tilt Zoom) cameras allow you to move the camera remotely until it's oriented correctly, and to zoom precisely. These individual cameras are expensive—the price of four or five fixed cameras, typically—so only install a PTZ to cover large, open areas such as parking lots or lobbies.

LONG-TERM ARCHIVING Backing up your data is always a safe bet. Having a great deal of hard-drive space installed on the DVR is a good idea, because you can search for video from the DVR control program. On the other hand, this can become expensive. Another option: back up video to an external hard drive. You will not be able to search using the DVR's search filters, but the data will be protected in case anything destroys the DVR, such as theft, flood, fire, or electrical surges.

A WORD ABOUT PRIVACY Before installing CCTV, check the local laws regarding privacy and recording. Never install video or audio surveillance anywhere there is a reasonable expectation of privacy, such as in bathrooms, locker rooms, changing rooms, medical examination rooms, etc. Never record another person's private property without permission.



■ Cash Registers

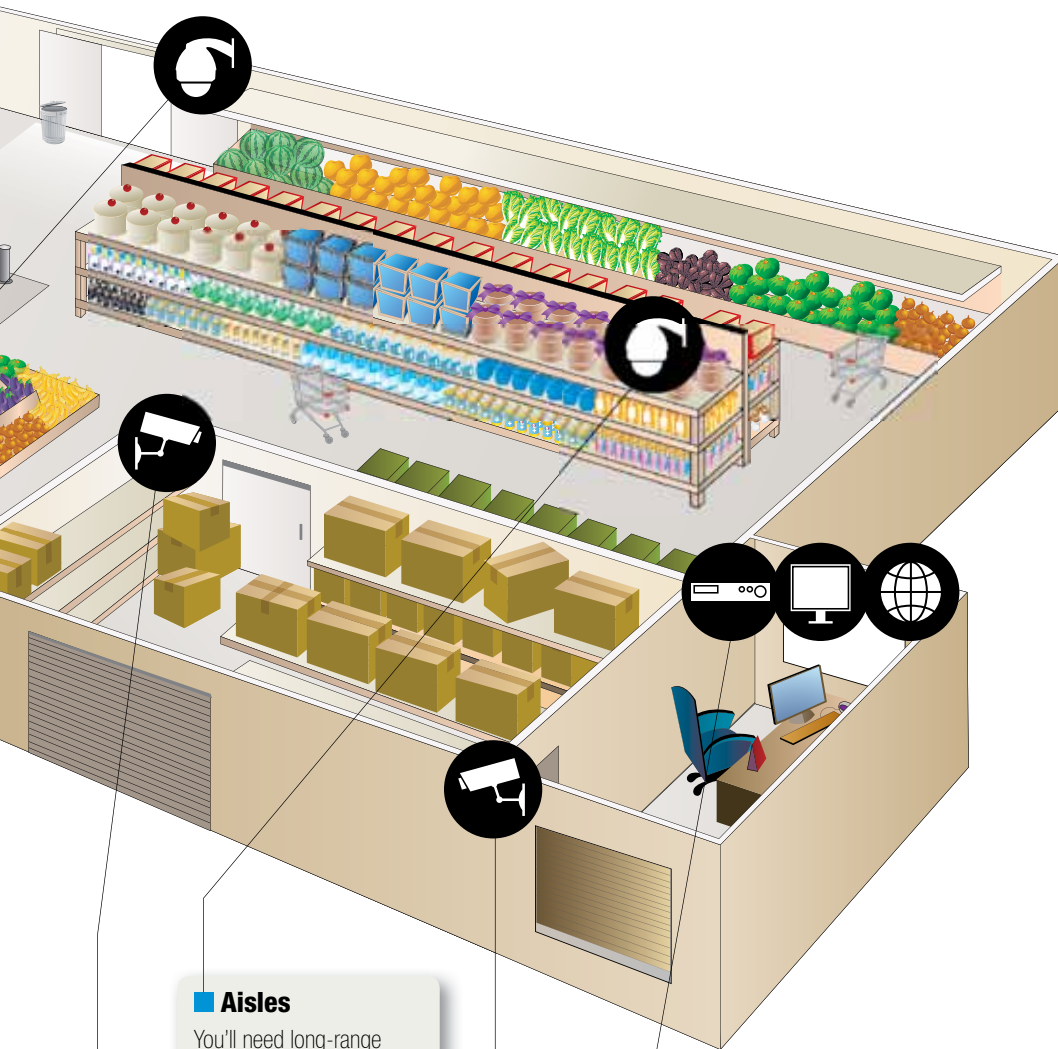
For this situation, install high-resolution, varifocal cameras. Varifocal cameras have adjustable lenses that allow you to get exactly the picture you want—zoom in to get a tight image with lots of detail, or zoom out for a wide overview. Illuminate the area well, but never point a camera directly at a light source.

■ Entrance

If your storefront is made of glass, the lighting will change over the course of the day. Most cameras will show you a completely washed-out picture. If this happens to you, you need a Wide Dynamic Range (WDR) camera, which lets you view the very dark and very bright parts of the picture simultaneously.

Typical Retail Setup

Selecting the best components is the hardest part of setting up a surveillance system. Not every camera will work for every application. At B&H, we can help you find the right cameras for your specific needs, without breaking the bank. Here, we'll look at a common purpose for surveillance equipment: minding the shop when you can't be around.



■ Aisles
 You'll need long-range lenses here. Install cameras on both ends of the aisle, facing each other, for optimal results. This way, you'll minimize dead spots (areas with no video coverage). Face cameras away from light sources.

■ Recording Options
 The DVR, or digital video recorder, is the brain of any CCTV system. Keep the recorder in a dry, cool, safe spot. You'll need high-speed internet access, and a router (not just a modem). Forward the ports on your router to access your cameras from any PC on the planet.

■ Storage
 Many warehouses and storage rooms are lit poorly. To compensate, use a DN, or Day/Night camera, which uses filters and digital processors to enhance available light. A wide-angle lens also allows coverage of more area with fewer cameras. The trade-off is a slight loss in detail and clarity.

■ Outdoor Cameras
 Cameras equipped with infrared illuminators will allow you to see a limited amount in the dark. Cameras will see in black and white when the infrared illuminators come on, so if color is important to you, it's best to have auxiliary lighting.

IP or ANALOG
Which is Right for You?

IP cameras are different from webcams in that they do not need to be connected to a computer in order to work. These cameras have built-in web servers. Giving these cameras their own IP addresses allows you to connect to them over a network like any other server. While each IP camera is, individually, more expensive than any individual analog camera, you do not have to purchase other equipment, such as DVR's, to control the cameras. On the other hand, storage space is a consideration; video storage takes up a lot of hard-drive space, even compressed. If you have the IS infrastructure for a large load on the network, IP cameras may well be the right solution for you.

UTP or COAX
Which Is Best?

- All analog cameras need at least two cables: one for video and one for power.
- Coaxial cable, or RG59, commonly known as 'coax', is the most common wire used to transmit video.
- Coax is expensive, hard to install, and bulky. More and more professional installers are turning to ordinary CAT5, or UTP cable, most often used for computer networks.
- Using NVT's line of video transceivers, you can use existing premise wiring to transmit video.
- A passive transceiver will send video over a single twisted pair. Two passive transceivers will send video 700 feet.
- Using a passive transceiver on the camera end and an active video receiver will send video 3000 feet.
- Using two active, amplified hubs together will allow you to send video 1.5 miles!

MSP-04MM14L01

4-Channel Pro 1000 System

The Mace MSP-04MM14L01 provides you with a simple and cost effective solution for securing multiple areas in your home or business. The system comes complete with a 4-channel DVR, a 14" color LCD monitor, 2 dome cameras, 2 bullet cameras and all the necessary power supplies, cables and mounting hardware. With this system in place, you will be able to view images from all four cameras on the same monitor as well as record them to the DVR. Because of the DVR's network connection you will also be able to access live and recorded images from a remote location over the Internet.

- Compact with a low-profile design, the 4-channel DVR-400MM incorporates an 80GB hard drive and features H.264 compression format for quality video images and efficient data management. It offers simultaneous recording, viewing and playback as well as remote Internet viewing of live and recorded images.
- The monitor features 1024 x 768 resolution, slim, space saving design and is equipped with loop through composite (BNC), S-Video and VGA inputs and has built-in speakers.
- The DM-63FCIR dome and CAM-43CIR bullet cameras feature 420 lines of resolution, 20 IR LEDs to illuminate up to 50 feet in the dark. Weather and vandal resistant metal casing, no mounts necessary

- **4-Channel Pro 1000 System:** (B&H # MAMSP04MM14L) **1,198.95**
- **4-Channel High Performance Pro System:** Same as above except with: DVR-400HP, DM-65VCIR Dome Cameras and CAM-53CIR Bullet Cameras (B&H # MAMSP04HP14L) **Call**
- **4 Channel Ultimate Pro 1000 Real Time System:** Same as above except with DVR-400RT3 realtime recorder (B&H # MAMSP04RT14L) **1,799.95**



mace

MACE 16 CAMERA KITS

This professional surveillance system offers the ultimate in security. The MAMSP16HP192 features a 16 channel 7FPS DVR, 8 IR bullet cameras, 8 varifocal IR dome cameras, and a 19" LCD monitor. The MAMSP16RT191 includes a 16 channel real time DVR, 8 IR bullet cameras, 4 IR domes, and 4 varifocal IR domes. Both kits include 19" LCD monitor and power supply. Cable and adapters not included.

- #MAMSP16HP192 16 Cam Kit **\$3,899.50**
- #MAMSP16RT191 16 Cam Real Time... **\$4,179.95**



mace

WILIFE

Do It Yourself Surveillance Kits

WiLife Surveillance Systems are easy, do-it-yourself, video surveillance starter kits for your home or office. Systems typically take 15 minutes to install and program. Get professional quality video without running wires. The WiLife system uses power line connection technology to transmit video over your existing electrical wires. Plug your camera into any outlet, plug the receiver into another outlet, plug the receiver into your computer using the included USB cable, install the software, and the WiLife Command Center takes care of the rest- it's that simple.

All Starter Kits Include:

- Camera, power supply
- Receiver, USB cable, Ethernet cable
- Computer and monitor not included

- #LOWICMSP Indoor Starter Kit..... **242.99**
- #LOWSCMSP Spy Camera Starter Kit..... **279.99**
- #LOWOCMSP Outdoor Camera Starter Kit..... **265.09**
- #LOWIAOCMS Indoor Add On Camera..... **179.19**
- #LOWAODCSC Spy Add On Camera..... **192.39**
- #LOWIAOCMS WILIFE INDR ADD-ON CAM to MSTR SYS..... **179.19**
- # Outdoor Add On Camera..... **\$229.95**



Logitech

TFT2284C

Monitor Recorder Combo Kits

The system consists of a 22" color LCD monitor, a built-in 8-channel 500GB DVR, 4 cameras, cables, mounts, and power supplies. Includes USB for easy backup and motion detection. The 2 indoor cameras include built in microphones for 2 way audio communication over the Internet. Includes 60 feet of cable per camera, plus all necessary mounts and power supplies. With DDNS support.

- #CLTFT2284C 22" LCD Monitor 8 Camera Recorder and 4 Cameras **1,899.00**
- #CLC1704DVR 17" CRT Monitor 4 Camera Recorder and 4 Cameras **849.95**



CLOVER

L19LD804321

LCD Observation System

This system comes complete with 19" color LCD monitor, a built-in 8-channel DVR, 4 high resolution cameras, and all system components are designed with an emphasis on ease of installation and operation. The Lorex L19LD804321 is a surveillance package containing all the components necessary to setup an effective multi-camera monitoring and recording system in a commercial environment.

- #L19LD804321 **Call**



LOREX

SW244-LPC

DVR4-1150 Recording Kit with 2 Maxi-Brites & 160GB HDD

Secure multiple areas in your home or business with this affordable and easy to install surveillance kit. It complete with 2 MaxiBrite cameras, a 4-channel DVR and all the necessary cables, power supplies and mounts. View all cameras at once on a single monitor as well as simultaneously record all 4 of them to the DVR. The DVR has an internal 160GB hard drive (expandable to 400GB), USB port, and features motion detection recording. This provides enhanced security, more efficient search options and better data management. The cameras feature 380 lines of resolution, sturdy anti-corrosive and weather resistant metal casing, and built-in IR illumination for viewing in the dark up to 30-ft.

- #SWSW244LPC **Call**



Swann

CLEARVU1

The SVAT CLEARVU1 comes complete with a DVR, an integrated 7" color LCD monitor, 4 cameras, 60 feet of cable per camera, and all the necessary adapters and power supplies. A USB connection on the DVR provides easy backup of recorded material to a USB flash memory stick or USB hard drive. Cameras are weatherproof and infrared for viewing and can see for 25 feet in the dark. Because the monitor is built into the recorder, this kit is perfect for any location where space is at a premium. View these cameras from any PC with included software and DDNS.

- #SVCLEARVU1 4 Camera DVR Kit..... **Call**
- #SVCLEARVU1A DVR with Built In Monitor **Call**



SVAT

CLEARVU10

Ultra Slim Web Ready 8 Channel DVR Security System

Protect your assets and your loved ones with this advanced package that you can set-up yourself. Record high quality digital video in MPEG-4 for up to 480 continuous days with customizable recording options and warning alarms. Remove the clutter with an amazingly slim and feature loaded DVR that has everything built into one sleek 19" LCD video security station.

- Auto-start recording, customizable viewing options, and email alerts (up to 7 addresses) whenever motion is detected or cameras lose power.

- **Includes:** 19" LCD DVR with 320GB HDD, 4 Outdoor Night Vision CCD Cameras with camera mounts and all necessary power adapters and cables
- #SVCLEARVU10 **Call**



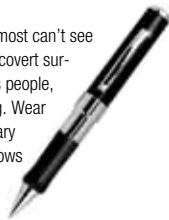
SVAT

PenCam DVR-421

Mini Video Camera and Recorder



The incredible PenCam DVR-421 conceals a video camera—so small you almost can't see that it's there—and a DVR inside a working quality ballpoint pen. Perfect for covert surveillance, law enforcement, lawyers (features time and date stamping), sales people, mystery shoppers, etc. Simply click the top of the pen and it begins recording. Wear it innocently in your shirt pocket, place it on your desk, or use it like an ordinary pen while recording AVI video files (compatible with Windows XP/Vista, Windows Media and RealPlayer) to the internal 2GB memory. Record for up to 3 hours then upload to a PC and then to YouTube, Facebook and other social networking sites. Built-in 90-minute battery is charged via USB port.



SWSW234PCG **Call**

C520PIR • C520SDCS

The C520PIR consists of a color camera concealed in a PIR motion detector, the C520SDCS consists of a color camera concealed inside an imitation smoke detector. Each has a built-in camera featuring 520 lines of resolution and low light sensitivity of 0.6 lux. The camera's are equipped with a 3.7mm and 3.6mm pinhole lens (respectively), a focal length common for security cameras. The video output is via a BNC connector, and a bracket is supplied for installation on a wall. The camera inside the C520SDCS is positioned to point at an angle as opposed to a camera that looks straight down.



C520PIR: Color Covert PIR Camera (# ARC520PIR) **Call**
C520SDCS: Color Covert Side View Smoke Detector Camera (# ARC520SDCS) **124.95**

COVERT CAMERAS

Hidden Camera Solutions for Home or Office



Hidden in an ashtray, desk top fan, desk lamp, air purifier, pencil sharpener, boom box, door bell, smoke alarm, baby clock, night light, desk clock, photo frame, baby room lamp, sound spa, tap light, portable door bell or electric plug is a high resolution, day / night camera. Featuring a high resolution CCD, the camera features 480 lines of resolution, 1 lux low light capability and can record directly to a SD card or built-in 16GB hard drive. With built-in motion detection, you can be sure you'll see what you need to see. And if you need to archive that video, you can just swap out the SD card. No software to install, no networking skills needed - just plug and play! User friendly on screen menu can be accessed with the supplied remote control.

Record to SD Removable SD Card

Ashtray Hidden Camera (# BOBM3020).....	539.95
Desktop Fan Motion Detection Hidden Camera (# BOBM3022)	599.95
Desktop Lamp Hidden Camera (# BOBM3023)	525.95
Air Purifier Hidden Camera (# BOBM3097)	599.95
Pencil Sharpener Hidden Camera (# BOBM3106).....	599.95
Boom Box Hidden Camera (# BOBM3238).....	599.95

Record to Built-in 16GB Hard Drive

Smoke Alarm Hidden Camera (# BOBR1010).....	367.50
Baby Room Clock Hidden Camera (# BOBR2024).....	489.95
Night Light Hidden Camera (# BOBR2026)	499.95
Desk Clock Hidden Camera (# BOBR2027)	409.99
Photo Frame Hidden Camera (# BOBR2028).....	399.95
Baby Room Lamp Hidden Camera (# BOBR2029)	424.95
Sound Spa Hidden Camera (# BOBR2030)	494.95
Tap Light Hidden Camera (# BOBR2032).....	454.95
Portable Bell Hidden Camera (# BOBR2033).....	489.95
Electric Plug Hidden Camera (# BOBR2034)	489.95

CamLite CL1000

Mobile Wireless Audio-Video Flashlight System

Ideal for various forms of law enforcement operations, the ruggedly constructed and water-resistant CL1000 is a fully functional flashlight housing a camera that features 330 lines of resolution, 30fps frame rate, minimum illumination of 6 lux, and a built-in microphone. Simply point it at the subject or incident, and wirelessly transmit (2.4GHz frequency range) the live feed (up to 1000' range) to a remote viewing location for subject identification. The CL 1000 also features up to 13,500 candlepower —illuminating the area in front of the camera, and a built-in laser pointer.



CL1000: Includes Flashlight and Wireless Receiver (B&H # CA1000S)..... **3,118.951**
 PBSS Camlite 1000 Portable Base Station System (B&H # CAPBSS) **4,993.95**

CamLite CL2000

Audio-Video Flashlight System

At first glance, the CL2000 appears to be an ordinary flashlight, but in actuality its a highly sophisticated mobile wireless audio-video surveillance system—ideal for various forms of law enforcement operations. Inside the flashlight is a camera featuring 380 lines of resolution, 30fps rate and can record down to 1 lux. Water-resistant, ruggedly -constructed (Zytel nylon) housing features a built-in microphone, laser pointer, low-battery indicator, and date/ time stamp capability. Simply point it at the subject or incident, and record up to 2-hours of MPEG-4 video onto an SD memory card. It can also illuminate the area in front of the camera.



CA2000S **1,644.50**

CNC1020

Security Mirror Camera

The Lorex CNC1020 is a high resolution color camera concealed inside a concave (curved fisheye view) mirror. This is the style of mirror commonly seen in retail, grocery and convenient stores, making it well suited for those types of applications. Patented mirroring technology completely hides the camera while allowing the camera to properly view an image. Includes wall mount bracket with cable pass-through, which allows cables to be completely hidden.



CNC1020 Color Concealed Security Mirror Camera #LOCNC1020 **224.95**

HIDDEN CAMERA AND RECORDER

The SVAT P11000 is a DVR and color camera contained inside a compact and realistic looking PIR motion sensor. People seeing it will dismiss it as just another sensor of some kind on a wall and will pay no further attention to it. This makes it an excellent choice for applications looking for an all-in-one monitoring and recording solution in a unit that is compact, easy to install and use, and most importantly discreet. Video is recorded in MPEG-4 and is stored to the included 512MB SD card, which goes right inside the DVR. Recording can be continuous or set to begin when motion is detected.



#SVPI1000 Motion Detector Camera with Built In Recorder **199.99**
 #SVCVP800 Pocket Sized SD Card Recorder..... **149.99**

BOARD CAMERAS

Ultra compact or "board" cameras are ultra versatile, highly concealable cameras, perfect for custom covert surveillance applications. These cameras come with flat or pinhole lenses, and many have removable board lenses, allowing a user to choose the right lens for the application. Install these cameras anywhere you need a covert camera but cannot add a ready made covert camera without raising suspicions. Bolide board cameras measure 1.5 inch by 1.5 inch square, with a depth of less than half an inch.



#BOKPC600 Board Camera Pinhole Lens Color..... **94.95**
 #BOKPC400 Board Camera Pinhole Lens B&W..... **46.95**

EQ550

PoleStar True Day/Night Camera

The EQ550 is a high resolution color box camera with a Day/Night function and 16-bit DSP to ensure properly exposed, well defined images in all lighting conditions with a minimum light rating of 0.002 lux. If even a small amount of light is available, the camera will still give you the best possible image. A common problem with low-light cameras is "noise", which is interpreted as motion by the DVR and recorded. DNR (Dynamic Noise Reduction) reduces noise, saving up to 70% of DVR storage space.



#EVEQ550 520 VTL 0.002 Lux Auto Iris **179.95**

VCC-6584DN

High-Resolution Day/Night 1/3" Color CCD Camera

Image clarity and image brightness are two of the most important factors for making a positive identification. With its high resolution of 540 lines and 0.25 super low lux rating, the VCC-6584DN excels on both counts. Electric-day/night function made possible thanks to an ultra sensitive CCD and digital technology. What this means to you is that you'll get usable video images even in areas that appear quite dark to you. Can be powered by either 24v AC and 12 to 15v DC power supplies. Accepts CS mount lenses (lens not included).



SAVCC6584DN **129.95**

C10CH6

High-Resolution 1/3" Color CCD Camera



Designed for minimally intrusive surveillance monitoring, the compact C10CH6 brings Pelco-level security monitoring to a home or business. Equipped with a 1/3" CCD it delivers quality images up to 540 lines of resolution—even under challenging lighting conditions. It has a minimum illumination of 0.4 lux and features a host of electronic picture controls including Electronic Shutter, Back Light Compensation, Eclipse

Function, AWB, Gamma Correction, and Flickerless Mode. On-screen menu provides easy access to controls and features like area masking, tilting, pixel correction and preset lighting profiles. Can be powered by either 24v AC and 12 to 15v DC. Accepts CS mount lenses (lens not included).

PEC10CH6 **Call**

WV-CP504 (Super Dynamic 5)

Day/NightColor Security Camera

Super Dynamic 5 (SD5) image technology achieves exceptional image quality by combining 128x wider dynamic range with 0.1 lux low-light sensitivity, 650 lines of resolution, and the implementation of Adaptive Black Stretch (ABS) technology to compensate for dark areas. Also includes intelligent Video Motion Detection (i-VMD) to capture moving objects without distortion and object detection for items removed or left behind. Built-in Auto Back Focus adjusts the positioning of the CCD to provide accurate focus in both color and B/W modes and reduces post-installation intervention. Offers 24V AC or 12V DC power options. Lens not included.



#PAWCP504 **Call**

BC6002HDN/8/30

Star-Light Day & Night Camera

The Bolide BC6002HDN/8/30 uses a 1/3" Sony Hi-Resolution Interline, super light sensitive CCD to produce high quality color images in normal light conditions. It seamlessly switches to B/W under lower light conditions. Other key features include Digital Noise Reduction and high speed white balance auto adjust. The BC6002HDN/8/30 gives a high quality image with 560 lines of resolution in color mode and 620 lines in B/W mode with only 0.001 lux rating. Power consumption is only 0.8W and it supports wide range power from 8VDC to 30VAC.



#BOBC6002HDN8 **184.95**

EI350

High Resolution Box Camera

The Ever Focus EI350 color surveillance camera features a built-in vari-focal lens and includes a sturdy aluminum mounting bracket offering a wide range of camera adjustment. The camera records a high resolution of 520 lines and is also super light sensitive with light requirements a low 0.5 lux. The camera uses powerful features such as 10-bit digital signal processing to improve image quality in difficult lighting conditions including low light levels and harsh back-lit situations. Easy to install, the EI350 is a good choice for high resolution, low cost video surveillance for your home or business.



#EVEI350- 520 VTL 0.5 Lux Integrated 3.8~9.5m Lens **142.95**

WATEC SUPREME

Miniature CS Box Camera

One of the world's smallest CS mount cameras at 1.4 x 1.4 x 2.4" and 3.2 ounces, the Watec Supreme uses a 1/2" CCD image sensor to give you super sharp images in extreme conditions. 570 VTL and a staggering 0.0003 Lux, this camera is perfect for specialty applications such as military, law enforcement, scientific and medical or dental applications, or forensic imaging. Includes DC auto iris, internal sync, signal to noise ratio of 46dB, and AGC and BLC controls. Black and white EIA sensor.



WA902H2SUPRE Miniature 540 VTL 0.0003 B&W **432.95**

LTC 0385/20

DinioxXF Monochrome Camera



The Bosch LTC 0385/20 high resolution B/W security camera runs on either 12 VDC or 24 VAC power and incorporates special features for ease of setup and operation. Compact and rugged in design, this 1/3" CCD camera records 570 lines of resolution and uses 15-bit DSP technology along with a number of advanced electronic controls for consistent performance in various lighting environments. Bilinx bi-directional communication protocol embedded in the camera's video signal allows a technician to check status, change camera settings and even update firmware from virtually anywhere along the video cable. Compatible with both C and CS lenses.

#BOLTC038520 **309.95**

VCC-WD8574

High-Resolution Day/Night 1/3" Color CCD Camera

The VCC-WD8574 incorporates a wide dynamic range for quality images in challenging lighting conditions. It has variable gain, electronic shutter up to 1/10000 second, backlight compensation, auto and manual settings for white balance and a motion detector. In B&W mode sensitivity can be boosted to capture video in 0.002 Lux. Easily fits into existing security systems with AC and DC power options. Accepts C/CS mount lenses (lens not included).



#SAVCCWD8574 **317.50**

ISD-A10

Hyper Dynamic, Super Cube DSP Color Camera

The ISD-A10 employs a 1/3" DPS (Digital Pixel System) imager to achieve exceptionally high dynamic range. This allows scenes to be handled that have wide range of luminance, varying from dark to very bright. Images are smear-less even in the presence of strong light. A high level of detail can be observed in the picture even under this condition. Plus, fast moving objects can be captured under low light conditions. Additional features such as 2-way auto iris, backlight compensation, and automatic white balance make it ideal for a wide range of surveillance applications.



#IKISDA10 **Call**

Watec**EverFocus****EverFocus****SANYO****PELCO****Panasonic****BOLIDE TECHNOLOGY GROUP****BOSCH****SANYO****Ikegami**

VCC-W1072

Super-Mini Dome Dome

The VCC-W1072 has a 3.0mm fixed focal length lens and features resolution of 500 lines in WGA mode (470 lines in VGA mode) for excellent surveillance video quality. Automatic gain control balances the extremes of signal input common in day-to-day surveillance. WDR (Wide Dynamic Range) technology solves the problem of monitoring windows and doors that have a powerful backlight. The camera also makes a good choice for night-time surveillance with its day and night mode and its ability to work well in very low illumination. Pan range is 360° and it can tilt up to 90°. All this plus electromagnetic and vibration resistance, make this camera a simple but effective addition to your surveillance system.

#SAVCCW1072 **95.95**



BC1009IRAD

Vandal Resistant IR Dome

This camera's durable construction allows it to be safely installed indoors or outdoors as well as in areas with a concern for vandalism. The camera's unique dome design also allows its pointing angle to be easily adjusted post installation, something which cannot be said for most dome cameras. A Day/Night function along with 12 IR LEDs provide the camera with the ability to see up to 50 feet in the dark. 450 VTL, 12VDC.

#B0BC1009IRAD Vandal Resistant IR Dome **Call**



ED350

Varifocal High Resolution

The ED350 records a high color resolution of 520 lines with minimum light requirements just 0.5 lux. The camera uses powerful settings such as 10-bit digital signal processing, AGC, and AWB to enhance picture quality under poor lighting conditions. A built-in 3.8~9.5mm varifocal lens provides easy adjustment for zoom and focus, so you get exactly the shot you want. This camera installs in minutes and is a good choice for low profile, low cost video surveillance for your home or business. Runs on 12 VDC or 24VAC.

#EVED350NW Varifocal High Resolution, White Base **146.95**
 #EVED350NB Varifocal High Resolution, Black Base **148.50**



EHD525

Vandal Resistant Dome

The EverFocus EHD525EX is a vandal resistant day/night dome camera designed for outdoor use. The camera is contained in a rugged housing protecting it from rain, sleet, and snow while a built-in heater automatically activates when the temperatures drops below ideal levels. The camera displays a high resolution picture of 520 lines with minimum light requirements as low 0.5 lux and under difficult lighting conditions. Includes adjustable 3.8~9.5mm varifocal lens.

#EHD525EX1 Vandal Resistant Varifocal 0.5 Lux 3.8~9.5mm #EVEHD525EX1 **Call**
 #EHD525EX2 Vandal Resistant Varifocal 0.5 Lux 9~22mm #EVEHD525EX2 **Call**



CAM-53CIR

Vandal Resistant Bullet Camera

This dependable little camera from Mace proves that quality doesn't have to be costly. With its weather resistant chassis and IR illumination, this camera can be installed indoors or outdoors as well as in areas containing little or no light. Users will also appreciate its built-in microphone, which by capturing audio along with video will give users a better evaluation of an incident. Included with the camera is a power supply and 100 feet of connecting cable, making it quick and easy to install.

#MACAM53CIR 470 VTL IR Camera **120.00**



CAM75CIR

Long Range Infrared Camera

This compact yet powerful camera uses 6 high intensity IR LEDs and a 12mm lens to see up to 200 feet away in complete darkness! The IP 67 rating means it is vandal resistant and weather proof, making it ideal for long range outdoor use. Installing this on a wall in order to observe an entrance or driveway means you no longer have to trench cable just to see in the dark. 480 VTL, 12 VDC. Requires a 1 amp power supply.

#MACAM75CIR 480 VTL Long Range IR **295.00**



Polestar EZ550

Weatherproof IR Bullet Camera with 6~50mm Lens

The Polestar EZ550 offers 560 lines of resolution, true day/night performance and the capability to capture images in complete darkness with super low light technology of 0.002 lux. It has a built-in motorized lens controller for zoom and focus adjustment and vari-focal 6-50 mm lens for an extensive field of view. It features true day/night feature with IR cut filter and IR distance up to 164 feet. Built-in Dynamic Noise Reduction (DNR) for reduced image noise and a 70% saving of disk storage. Built-in heater for low temperature. Cable wires inside housing and bracket eliminate messy wiring and prevent wire damage. Weatherproof IP66 rated and vandal resistant to withstand intentional destruction.

#EVEZ550 **414.95**



CVS1000

Submersible Camera

The Lorex CVS1000 has one of the highest waterproof rating of any CCTV camera on the market. Its IP68 rating means that it can be safely submerged in water at depths of up to 165 feet. This makes it ideal for use on boats, in water parks or any other environment where the camera is subjected to a good splashing every now and then. Includes 100' waterproof cable and power supply. 420 VTL, high powered LEDs can see 60'.

#LOCVS1000 Underwater Camera **199.95**



CAM-5S

Color Bullet Camera

An attractive bullet-style color camera, the CAM-5S is suitable for many monitoring applications including watching the baby sitter, your children playing outside, or daily activities at home or work. Ideal for use in small locations, it features a 1/4-inch r CCD with auto white balance, 380 lines of resolution, electronic shutter up to 1/100,000 second and low-light capability. The camera includes a 3.6mm lens and a sturdy, adjustable mounting bracket. Easily installed to monitors and DVRs.

#MACAM5S **69.95**



PAN TILT ZOOM CAMERA

This PTZ speed dome features 26x optical zoom and 12x digital zoom. The Sony CCD ExView chip means the camera is extremely sensitive at low light, while the guard tour function means you can let the camera scan automatically. When used with a Mace DVR, the RS485 can be controlled from the DVR directly using the mouse, eliminating the need for a keyboard. With auto flip, privacy mask, auto focus, and variable speed panning.

#MASD6260 PTZ in Outdoor Housing with Heater **1,253.95**
 #MASD6261 PTZ in Indoor Housing Flush Mount **1,199.95**



BLC111A**Panasonic.**

Attractive, cheap, and simple to install, the BL-C11A is perfect for watching your home while you're on the road. View the video from any PC with the free IP address without installing software- all required software is embedded in the camera. The camera automatically configures itself for optimal use when it plugs in. The motion detection technology can tell the difference between humans and animals and send you an email with video of an intrusion. 10x digital zoom and remote pan and tilt from any remote PC, too. Also has a highly sensitive microphone for audio monitoring.



BL-C111A Wired Network Camera with Motion Detection #PABLC111A..... **Call**

AXIS 221 DAY/NIGHT CAMERA

Like it's cousin the Axis 211, this box camera features a CS lens mount, Power over Ethernet (PoE), motion detection, simultaneous MJPEG and MPEG4 streaming, and Axis's powerful developer toolkit for custom applications. It also features a removable IR cut filter to switch from high resolution color during the day to an ultra sensitive B/W mode when light levels fall, giving you color pictures at 0.65 lux and black and white at 0.08 lux. A Pentax 3~8mm varifocal lens gives you the exact field of view and focus length you need.



#AX221 Day/Night IP Camera..... **999.00**
 #AX22110Q Day/Night Camera 10 Pack With Lenses..... **9,899.00**
 #AX22110 Day/Night Camera 10 Pack No Lenses..... **9,499.00**

AX207/ 207W MINI NETWORK CAMERA

Possibly the world's smallest IP camera, this palm sized network camera measures only 2.8 x 3.4 x 1.3". Axis Media Control ActiveX component enables easy viewing of Motion JPEG and MPEG-4 streams directly in Microsoft Internet Explorer and other ActiveX containers. With integrated microphone, 802.11b/g capability, simultaneous MJPEG and MPEG4 capability, PC and Mac accessibility, and Axis's powerful developer toolkit, this camera is the perfect choice for reality TV, surveillance, webcasting, vlogging, and webinars. Up to 30 FPS in VGA resolution. Includes camera stand, power supply, and free DDNS service.



#AX207 Network Camera with Built In Audio..... **Call**
 #AX207W Wireless Network Camera..... **299.00**

AX223M MEGAPIXEL IP CAMERAS

Most IP cameras record video in 640x480 resolution, which is VGA quality. For applications requiring higher resolutions, Axis offers the AX223M. This is the megapixel version of the day/night AX221 (above), and it is capable of capturing outstanding video quality with the clarity and detail normally associated with digital still cameras thanks to a 2 megapixel CCD imager. Using digital zoom, you can drill down into images for a level of video surveillance never before possible. Use a rectilinear lens such as the THS125A (page 413) for dPTZ functionality and forensic video.



#AX223M Megapixel IP Day/Night Camera..... **1,399.00**
 #AX211M Megapixel IP Camera..... **749.00**
 #AX211M10 Megapixel IP Camera 10 Pack..... **7,349.00**

SNC-DF80N

Vandal Resistant Low Light Dome

The Sony SNCDF80N is a high performance network camera encased in a rugged housing that is both weather and vandal resistant. In B/W mode, this camera is capable of producing visible images in light levels as low as 0.06 lux. Three pre-recorded audio files can be recorded to the camera's internal memory. Upon motion detection or other alarm condition the camera can be set to play these intelligent messages instead of just sounding or displaying an ambiguous alarm alert. Features motion detection, 2 way audio, CF card backup, and a standard BNC video output for viewing on a public display monitor for theft deterrence purposes.



#SOSNDCF80N Vandal Resist low Light..... **879.95**

BB-HCM580A**Panasonic.**

Professional grade PTZ network camera, easy to install and operate, and requiring no additional software to view from a remote PC. Using a standard Web browser or compatible cellphone, you can control the movement of the camera. With 21x optical zoom and remote pan and tilt. You can also assign a home position that allows you to return the camera to a preset point in the field of view. Up to eight presets can be registered in advance for fast video capture. With 3.5mm audio input and output for 2 way audio communication.



BB-HCM580A Professional Pan/Tilt/Zoom Network Camera #PABHCM580A..... **699.99**

WV-NS202A PTZ CAMERA**Panasonic.**

The flagship of Panasonic's i-Pro professional IP security camera line, the NS202A is the choice of the professionals. Featuring Power over Ethernet (PoE), 22x optical zoom, audio input and output, motion detection, and auto-tracking mode, this camera is powerful enough for even the most demanding installations. Panasonic SDIII technology means you get the best possible picture in all lighting conditions. This camera supports simultaneous dual stream MPEG-4 and MJPEG transmission, allowing you to record in high resolution while viewing live video in a more efficient format.



#PAWVNS202A i-Pro Pan/Tilt/Zoom Camera..... **1,074.95**
 #PAWVQ150C Wall Mount Housing with Clear Dome..... **179.95**
 #PAPODV7CWNS Outdoor Wall Mount with Heater/Blower..... **499.95**

AX211 BOX CAMERA**AXIS**

Featuring a CS lens mount and an included Pentax 3~8mm varifocal lens, you can set this camera to just the field of view and focus length you need. PoE (Power over Ethernet) technology means you can power this camera with the same cable that carries data using a PoE injector. The Axis 211A has a 3.5mm mini mic input and output, allowing you to use this camera for 2 way communication. With motion detection, simultaneous MJPEG and MPEG4 streaming, and Axis's powerful developer toolkit for custom applications.



#AX211 IP Camera..... **599.00**
 #AX211A IP Camera with 2 Way Audio..... **649.00**
 #AX211W 802.11B/G Wireless IP Camera..... **699.00**

I-PRO MEGAPIXEL CAMERAS**Panasonic.**

The second generation of cameras in Panasonic's iPro line, these megapixel cameras feature 1.3 megapixel progressive scan CCD chips and a proprietary DSP for crisp, clear video images. The progressive scan eliminates the "jagged edge" look of video frame grabs, allowing you to clearly view the faces of moving subjects. Megapixel cameras require a high definition lens whose depth of focus tends to be so shallow that precise focus adjustment is required, so the camera includes a Focus Adjust feature. With dual streaming JPEG and MPEG4, PoE, and day/night mode. The PAWVNF302 includes a 2.8~10mm varifocal lens.



#PAWVNF302 Dome Camera 2.8~10mm lens..... **849.95**
 #PAWVNP304 Boc Camera CS Mount..... **734.95**

WV-NW484S**Panasonic.**

The Panasonic WV-NW484S is a high performance network dome camera contained in a vandal resistant enclosure capable of withstanding significant shock and vibration. This level of durability makes it an excellent choice for use in prisons, construction sites, sports stadiums, schools, and similar applications where the camera might be at risk from intentional or accidental damage. PoE powered heater and dehumidifier makes this perfect for harsh weather conditions, while image stabilization and auto back focus means you can install it even in places where vibrations make normal camera placement impossible. SDIII technology allows you to see in very low light conditions to 0.6 lux. Includes 3.8~8mm varifocal lens, left object detection, and motion detection.



#PAWVNW484S Vandal Resist IP Dome..... **929.95**

EDVR4D1/160



This commercial grade recorder includes motion detection recording, on board DVD burner, VGA output, PTZ control, loop-through video inputs, alarm I/O ports, and remote viewing. This DVR records at speeds of up to 120 fps over 4 channels at 360 x 240 resolution, and can be adjusted to 30 fps at 720 x 480. This DVR can send you an email alerting you to common DVR problems like hard drive failure or video loss.



- #EDVR4D1160 4-Channel Digital Video Recorder 160GB **Call**
- #EVEDVR9D1250 9-Channel Digital Video Recorder 250GB..... **1,008.00**

DS2PD16160



The Digital Sprite 2 from Dedicated Micros is a professional DVR with the powerful security tools you need for high risk installations. The DVR features on-board text support on-screen credit card data from POS systems. The RS485 bus allows you to stack as many as 16 DVRs in a single location, while the included NetVu software allows you to control 36 different sites at once. The software also includes such features as Google Earth integration for location tracking and the ability to create PDF formatted reports. This DVR also supports IP cameras, allowing you to "future-proof" your system. With DVD burner.



- #DEDS2PD16160- 16-Channel 160GB DVR..... **3,944.95**
- #DEDS2PD16320- 16-Channel 320GB..... **4,376.95**

SW242-SR6



The Swann 4 Channel DVR Pronet is a full featured DVR, equipped with intelligent motion activated recording. As with other Swann CCTV products, it is also designed with an emphasis on ease of setup and operation. This means that even users who are not in the CCTV business will master its functions in as little time as possible. By recording only important footage, motion detection saves on hard drive space and makes it easy to locate event footage. Motion detection events can be programmed to send email alerts over the network. Includes audio input.



- #SWSW242SR6 4 Channel DVR 160GB..... **Call**

DVT-100



This PC based DVR allows you to navigate your surveillance video controls using a familiar Windows based interface and a keyboard-mouse combination, as opposed to traditional DVRs, with their proprietary interfaces and cumbersome button driven controls. In addition, you can easily upgrade the storage space when your needs grow. Based around DVTech's DVT100, this system features hardware based MPEG4 compression, intelligent event search, and PTZ control, with email and SMS alerts.



- #DVDVT100SI 500GB 120 FPS **Call**

DVR GUARDIAN
Camera USB Adapter



View and record up to 4 cameras and two audio devices with the DVR Guardian from Swann. PC. Unlike DVR cards, this unit plugs right into the PC's USB port, eliminating the hassle of having to open and install a PCI board inside the computer. Includes compression software that allows you to record up to 640x480 at 30 FPS. With email alerts.



- #SW241-UD4-11000 USB 2.0 DVR Guardian #SWSW241UD411 **Call**
- #SW244-UDC DVR Guardian Security Kit #SWSW244UDC..... **159.00**

DSR-2016H16



With adjustable frame rate settings on every channel, you can give cameras in high risk areas higher priority while saving hard drive space by giving lower risk cameras a lower frame rate. RS-485 and RS-422 input gives you PTZ control right on the unit, not just over the network. Up to 1TB of available storage in two 540GB IDE drive trays allow you to store an average of 42 days. 110/240 VAC and NTSC/PAL switchable.



- #SADSR2016H16 16 Channel DVR 160GB **Call**
- #SADSR2016H30 16 Channel DVR 300GB **Call**

DVR-400MM-HDD



This recorder uses the new H.264 compression format to give you 7 days of video on an 80GB hard drive. The Mace DVR-400MM features a user friendly, icon driven menu for programming and playback. Use the front panel controls, the remote control, or the included mouse to control the DVR. The Ethernet port means you can view and control this recorder from any PC, anytime. An operator can also use the Internet or a LAN connection to control the pan, tilt, and zooming functions of Mace PTZ dome cameras in full screen mode. With 4 audio inputs, VGA and composite video out, alarm input and output, and 2 USB ports.



- #MADV400MMHD 4 Channel 80GB DVR..... **Call**

DVR-800RT3



This professional grade DVR is one of the most user-friendly units on the market today. Using H.264 compression, this recorder can save video at 30 fps on all channels at 2CIF, giving you sharp pictures in real time. Watch video and program the DVR from any PC in the world using either the browser-based interface or the included software. Control Mace brand PTZ cameras right from the interface using the included mouse with no keyboard required. With USB backup, DVD burner, 4 channels of audio, and remote control.



- #MADV800RT3 8 Channel DVR 240 FPS 160GB **Call**
- #MADV1600RT3 16 Channel DVR 480 FPS 1TB **1,689.95**

BOSVR2008

All in One DVR



This DVR monitor combo is a great space saver, perfect for small businesses with no room for bulky security equipment. It features a high quality 15" LCD monitor with a built in 4 channel MPEG4 DVR. With it's user friendly setup, 4 video and audio inputs, simple event search, upgradable 160GB SATA hard drive, remote control, 120FPS real time recording, remote Internet access, motion detection, RS485 PTZ control, and USB backup, this DVR is perfect for everyday use.

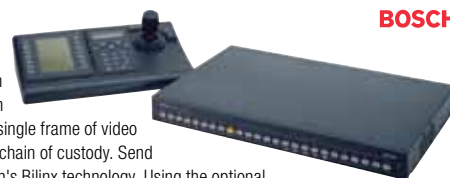


- #BOSVR2008 4 Channel DVR with 15" Monitor 160GB 120FPS..... **999.95**

DIVAR SERIES



Despite the high quality video and extreme reliability Bosch is known for, ease of use is not sacrificed in the Divar series recorders. Every single frame of video can be authenticated, preserving chain of custody. Send telemetry up the coax using Bosch's Bilinix technology. Using the optional ATM/POS bridge, you can record financial transactions together with the video.



- #BODVR16F2502 16 Channel DVR 60 FPS 1TB..... **5,509.95**
- #BODVR16F2162 16 Channel DVR 60 FPS 320GB **3,799.95**
- #BODVRXEP01 POS/ATM Interface for Divar DVRs **629.95**

DVR148016

DVR Card

Get clarity and functionality from your desktop by utilizing full D1, half D1, CIF video, 240 FPS recording, 480 FPS real-time display, and 16 channel video/audio.

DVR148016 16 Channel 480 FPS DVR Card
#MADVR148016 **1,224.95**

DVR124008 8 Channel 240 FPS DVR Card
#MADVR124008 **999.95**



mace

WJNT304

MPEG4 / JPEG Video Encoder

The WJ-NT304 gives you the flexibility of IP video with the image quality and light sensitivity of traditional analog cameras. Encodes video at 640x480 at 30 FPS shared. Dual streaming technology means you can view in efficient MPEG4 while recording video in slower but sharper JPEG. Record video to Panasonic WJ-ND300 series NVR recorders. With 4 BNC inputs, 2 way audio, and SD card backup in case of network issues.

#PAWJNT304 4-Channel MPEG4/JPEG Encoder **1,854.95**



Panasonic

WJ-ND400 SERIES

Network Video Recorders

Building on the reputation of the legendary WJ-ND300 series, Panasonic has introduced the WJ-ND400 series network video recorders. Far surpassing anything available up to now, the WJ-ND-400 is compatible with megapixel i-Pro cameras and can record 64 channels at a blistering 200Mbps. Record video at a resolution of up to 1280 x 960, or four times VGA quality, allowing you to record wide angle images and zoom into the image at 2x and 4x digital zoom without loss of quality. The WJ-ND-400 includes 9 hot-plug HDD bays, expandable to 54 slots for 54TB of hard drive space. With high-resolution recording and an incredible amount of storage space, this NVR is perfect for the next generation of high definition video surveillance products. Aside from its rugged chassis, it features an embedded real-time operating system, multi-screen display, VMD Search, flexible playback controls, alarm/event recording modes, motion detection, e-mail notification upon alarm or warning, simultaneous remote accessibility up to 16 users, front-panel operation, RAID 5/6 redundancy, up to 15 minutes of pre-recording with dedicated HDD, and rack-mounting capabilities.

#PAWJND400100 64 Channel NVR 1TB **7,906.95**
#PAWJND400300 64 Channel NVR 3TB **9,003.50**
#PAWJND400600 64 Channel NVR 6TB **10,648.95**
#PAWJND400180 64 Channel NVR 18TB **20,268.95**



Panasonic

TIME LAPSE VCR

Looking to replace a faulty time lapse VCR? Not interested in learning new and complicated digital systems? For those users wishing to keep their current surveillance video systems intact, this versatile CCTV VCR can record up to 960 hours of time lapse video or 30 hours of real time video with a standard T-120 VHS tape. Includes date/time display, remote control, and one audio input.

#ARVCR30RT960 Time Lapse VCR **189.95**
#SOVT120 T-120 VHS Tape **1.50**



ARM ELECTRONICS

50" DLP CCTV DISPLAY

This 50" DLP display designed for installation in large control rooms, allowing multiple security personnel to view single or multi-camera images on a central wall or ceiling. Utilizing DLP (Digital Light Processing) technology, this monitor is capable of delivering outstanding picture quality with the superior brightness and sharpness required in a CCTV environment. DLP technology also prevents burn-in common to CCTV monitors.

#PEPMC750US 50" DLP Monitor US Plug **10,761.95**



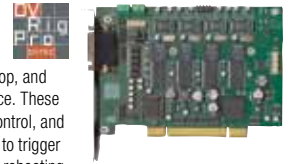
PELCO

DVT-100 / DVT-200

DVR Card

View and control your cameras right from your Windows desktop, and record on the computer's CD/DVD burners and hard drive space. These cards feature MPEG4 hardware compression, on board PTZ control, and intelligent event search. Motion detection can be programmed to trigger email or SMS messages, along with system related events like rebooting, video loss, and more. Control multiple systems with included software.

DVT-100 16 Channel 120 FPS DVR Card #DVDVT100 **699.95**
DVT-200 32 Channel 240 FPS DVR Card #DVDVT200 **Call**

**MPEG2 DECODER**

This IP video encoder and decoder from Panasonic allows you to view high resolution cameras in true high definition anywhere along the network. Using true MPEG2 compression, you can view DVD quality images remotely without the resulting loss in picture quality. This also allows you to set up a security control room anywhere with no extra cabling. Multicast means bandwidth is used as efficiently as possible. With PTZ control and camera titles.

#PAWJGXE900 4 Channel MPEG2 Encoder **4,499.95**
#PAWJGXD900 4 Channel MPEG2 Decoder **5,139.95**



Panasonic

WJ-ND300 SERIES

Network Video Recorders

The WJ-ND300 series of NVRs is an edge-of-network recording solution capable of storing data from 32 IP cameras. Capable of frame rates up to 960 FPS for MPEG4 at 4CIF, this NVR is the heart of any enterprise class IP surveillance system. With hard drive configurations of up to 7TB, this NVR comes with Auto IP feature, which automatically assigns IP addresses to any Panasonic WV series IP cameras on the network, greatly simplifying network setup. This NVR also comes with tools to analyze exactly how much bandwidth each camera uses, allowing you to assign just the right frame rate to each camera. By installing the optional WV-AS65 Management PC Software, a user can control up to 100 WJ-ND300 units along with their associated cameras from a single PC workstation. Includes MPEG-4/MJPEG recording options for versatile data management, alarm I/O ports, and access for 32 simultaneous clients. Use the WJ-NDB301 board for RAID5 redundancy.

#PAWJND300100 32 Channel NVR 1TB **5,299.95**
#PAWJND300300 32 Channel NVR 3TB **11,099.95**
#PAWJND300600 32 Channel NVR 6TB **20,099.95**
#PAWJNDB301 Raid5 Board **839.95**
#PAWVAS65 Management Software **439.95**



Panasonic

BE-3207

Video Matrix

For very large installations with multiple DVRs and multiple viewing locations, a matrix switching system is a must.

This matrix switcher accepts up to 32 loop-through video inputs and features 7 monitor outputs. It also has 32 alarm inputs and 4 alarm outputs. Up to 8 keyboards can be used.

#BOBE3207 32 Input 7 Output Matrix system **2,094.95**



BOLIDE TECHNOLOGY GROUP

QUAD VIDEO SPLITTER

The EverFocus EverPlex 4CQ is a 4 camera, real time quad splitter which allows you to view 4 cameras on one monitor when viewing live video. With the EverPlex 4CQ, you can watch one camera at a time or all 4 cameras at once. You can even have watch all 4 cameras in full screen, one at a time. Program exactly how much time each camera is displayed on the screen in sequencing mode.

#EVEP4CQ 4 Channel Video Splitter **139.95**
#EVEP8CQEP200 8 Channel 2 Page Video Splitter **139.95**



EverFocus®

BE-KB03

Controller Keyboard

The KB03 is a full featured yet easy to use 3-axis professional keyboard controller. It can be used to control Bolide PTZ cameras as well as PTZ cameras from most other manufacturers. In addition to basic PTZ control, this keyboard also provides access to various other PTZ camera functions like focus, iris, preset positions, groups, and tours. With programmable buttons and LCD display. Control up to 255 separate devices at once. Use the 16-channel RS-485 Bus distributor for transmitting multiple cameras.



#BOBEKB03 Controller Keyboard.....	659.95
#B0485BUS16 16 Channel RS-485 Bus.....	899.95

UTP VIDEO TRANSCEIVERS

Video over Cat5e

Using NVT transceivers allows you to send video over twisted pair of UTP, such as CAT5. The unparalleled interference rejection and low emissions of NVT video transmission products allow video signals to co-exist in the same wire bundle as telephone, datacom, or low-voltage power circuits. This allows you to use existing premise wiring with relatively inexpensive CAT5, saving you money. Passive video transceivers such as the NVNV208AM can send color or black and white CCTV signals 750", either alone or when used together with passive multi-channel receivers as the 4 channel NVNV413A or the 16 channel NVNV1613S stub hub. For longer distances, use a passive transceiver in conjunction with an active receiver/amplifier, such as the 16 channel NVNV1672. For greater distances, use an amplified receiver with a powered transmitter, such as the NVNV653T, which will transmit video 1.5 miles!



#NVNV208AM Passive Video Transceiver W/ Whip.....	44.95
#NVNV214AM Passive Video Transceiver.....	43.50
#NVNV413A 4 Channel Passive Transceiver.....	264.95
#NVNV653T 1 Channel Active Receiver.....	Call
#NVNV452R 4 Channel Active Receiver.....	869.95
#NVNV216APV 1 Channel Power & Video Transceiver.....	69.95
#NVNV16PS13PV 16 Channel Power & Video Transceiver.....	2,089.95
#NVNV1672 16 Channel Active Receiver Amplifier.....	3,122.95
#NVNV1613S 16 Chan Passive Receiver Stub Hub.....	788.50
#NVNV3213S 32 Chan Passive Receiver Stub Hub.....	1,626.95
#NVNV3272 32 Chan Active Receiver Amplifier.....	6,285.95

AXIS CAMERA STATION

Comprehensive Video Management Software

This powerful network video management software application from Axis allows you to control video data from up to 50 IP cameras at once. Installed on a sufficiently powerful server, the software allows you to save and analyze video at over 1500 fps, limited only to the amount of storage space you choose to install.



#AXCS4CSL Axis Camera Station With 4 Cam Licenses.....	649.00
#AX5CL Axis 5 Cam License.....	499.00
#AXIE1CL Image Enhancer 1 Cam License.....	119.00

SV35 SERIES

Hard Drives

While surveillance equipment will work with any generic hard drive, Seagate designed the SV35 Barracuda series just for the security industry. With an average of one million hours before failure (MTBF), the ability to write multiple streams of data at once, an 8MB cache, 7200 rpm spindle speed with a sustained data transfer rate of 80 mbytes per second, and fewer moving parts than most hard drives, the SV35 series is the choice of security professionals who need to know that their video data is secure.



#SESUK500 500GB SATA Hard Drive.....	69.99
#SEPUK500 500GB IDE Hard Drive.....	Call
#SEST310005N1 1TB SATA Hard Drive.....	89.99

RECTILINEAR LENS

Ultra Wide Angle, Low Distortion

These award winning, revolutionary lenses from Theia Technologies give you a 135 degree angle of view with virtually zero distortion. Traditional super wide cameras require special software to smooth out the extreme distortion inherent to the lens, but the patented Linear Optical technology means that no additional software or hardware is needed; all correction is done by the glass itself. Using a megapixel camera, you can place a camera in a wide overview and digitally drill down into an image, giving you true dPTZ functionality. 1.28mm, F/1.8.



#THSY125A CS Mount Auto Iris.....	439.95
#THSY125M CS Mount Manual Iris.....	439.95

AXIS 241Q

4 Channel Video Encoders

The Axis 241Q effectively bridges the gap between analog and digital technology. The server accepts four analog fixed or dome cameras and turns them into virtual network cameras complete with full remote Inter viewing and recording, PTZ control and alarm I/O ports. Connection to the network is via a single Ethernet cable, making it quick and easy to set up and operate without the need for a local PC. These and other features make this server a very useful tool for long established security facilities looking to take full advantage of the latest in network technology without having to replace their existing high resolution and expensive analog equipment. Take advantage of the flexibility of IP while keeping the picture quality of analog. The Axis 214Q captures video simultaneously in both the MJPEG and MPEG-4 formats at a resolution of 704 x 480 and at speeds up to 30 fps. This gives a user the necessary control over how data is transmitted over a network and also provides a user with the image clarity and smooth picture movement required to better identify people and objects. Built into the server is a motion detection function fully configurable for area and sensitivity. Motion detection not only alerts an operator to suspicious movement, but when used to trigger recording to a server, saves valuable time and network resources.



#AX241Q 4-Port Standalone Video Server.....	799.00
#AX241QB 4-Port Blade Video Server.....	654.95
#AX241QZ 10 Axis 241Q Kit.....	7,749.00
#AX241BQ 10 Axis 241Q Blade Kit.....	6,749.00
#AX291 1U 3 Slot Video Server Rack.....	399.00
#AXRVS19PS 3U 12 Slot Video Server Rack.....	1,299.00

AXIS 247S MINI ENCODER

Comprehensive Video Management Software

This video server takes the composite video signal from one analog camera and encodes it for streaming over a network in MJPEG and MPEG4 simultaneously. The encoder delivers high quality video in 4CIF at 30 fps, while the built in de-interlacer eliminates video artifacting, giving you the clearest image the camera is capable of producing. The encoder outputs power, allowing you to power the camera using the same PoE as the encoder. At just 3.8 x 1.6 x 3.9", you can easily mount the unit inside a camera housing. With audio input and motion detection.



#AX247S Mini Encoder with PoE and Power Output.....	499.00
#AX247S10 AX247s 10 pack.....	4,849.00

BT-84001 BIONIC EAR

High Performance Uni-directional Microphone

The Bionic Ear is a high performance uni-directional microphone system with a range of up to 100 yards. It can be used for security and surveillance applications and recorded from by connecting a recording device to the 3.5mm mini plug. The Pro 88W is a 2-channel VHF wireless microphone system. The system includes a belt-pack transmitter, camera mountable receiver, and MT830mW omni-directional lavalier microphone.



#BOBT84001 Bionic Ear.....	249.95
#BOPRO88W Wireless Mic VHF Lavalier System.....	249.95

VMC-L2017 / VMC-L2019

High Performance Professional LCD Monitor

High performance professional LCD monitors. 500 TV lines of resolution (1280 x 1024). 1000:1 high contrast ratio. 2 composite inputs, 1 S-Video input, loopthrough output with BNC 1, VGA input, 2 audio inputs (RCA type). 11 language OSD menu. Adjustable height. Includes remote control.

VMC-L2017 17" LCD Monitor Multi Input #SAVMCL2017.....**Call**
VMC-L2019 19" LCD Monitor Multi Input #SAVMCL2019..... **694.95**

**SANYO****PMCL542A**

42" LCD Monitor

The Pelco PMCL542A is a high resolution 42" LCD monitor built to perform in around-the-clock surveillance environments. Pelco's IQE technology provides maximum contrast and color accuracy. A space-saving footprint makes the monitor less obtrusive in small rooms, and energy efficient.

#PEPML542A..... **2,559.95**

**PELCO****C21M**

Professional Grade 21" CRT Monitor

Housed in a durable steel cabinet with a built-in carrying handle, the C21M provides a high level of detail and color depth for CCTV environments. It offers a high resolution of 520 lines with loop-through BNC and S-video inputs.

#ARC21M 21" CRT Color 520 Lines..... **284.95**

**ARM ELECTRONICS****KCT20AD**

20" Color CRT Slave Monitor

This low cost 20" color CRT slave monitor has a built-in speaker. Designed for CCTV applications, the monitor lets an operator display an image in full from the main multi image monitor for viewing or recording purposes. It features a video loop-through input and 350 lines of resolution.

#MAVERKCT20AD 20" Color CRT Slave Monitor with Speaker **Call**

**mace****1BSM**

One-Inch Portable Viewfinder Service Monitor

This portable viewfinder service monitor allows repair technicians to view CCTV outputs on site. It's equipped with a bright LCD display for quick and easy operation, with a resolution of 320 x 240 pixels.

#AR1BSM 1" Service Monitor..... **Call**

**ARM ELECTRONICS****SW248-8LM**

8" LCD Security Monitor w/ Built-In Speaker

This monitor accepts the direct connection of two video cameras and features a built-in speaker for monitoring sound along with video. It's small and light enough to easily move from location to location.

#SWSWALCD8 8.4" LCD Security Monitor **Call**

**Swann****PX7V / PX9V / PX5V**

These LCD monitors are specifically designed for high quality CCTV monitoring. They come with all the necessary inputs, including RCA composite, S-Video, and VGA. Intensive Color System (ICS) technology prevents weak signals from being lost, eliminating the "video hunting" phenomenon commonly associated with PC LCDs.

PX7V 17" Enhanced Series CCTV LCD Display #DRPX7V..... **Call**
PX9V 19.1" Enhanced Series CCTV LCD Display #DRPX9V **Call**
PX5V 15" Enhanced Series CCTV LCD Display #DRPX5V **Call**

**DRW****HIGH RESOLUTION LCD**

Use for very high resolution installations where detail, clarity, and color fidelity are critical. Includes 2 BNC inputs and outputs, 1 S-Video input and output, 1 VGA input, and 3 RCA audio inputs and outputs. The monitor has a wide field of view, allowing you to view multiple monitors in a row at the same time, ideal for security desks with several monitors.

#BOBE8017LCD 17" Security LCD **479.95**
#BOBE8019LCD 19" Security LCD **579.95**
#BOBE8021LCD 21" Security LCD **929.95**

**BOLIDE TECHNOLOGY GROUP****LCM-205MW**

Professional 21.1" Monitor

Designed for Public Teleconferencing

The LCM-205MW has a built-in camera and provides a simple way to relay video transmissions; its wide-dynamic range assures crystal clear images in dimly lit spaces. The LCD can also be used in any public environment where constant visual monitoring is necessary.

#IKLCM205MW Public View LCD Monitor, includes Multimedia Card **2,388.95**

**Ikegami****VER-19LCD**

LCD Monitors for CCTV Environments

Designed for CCTV environments, the VER-19LCD has a high resolution and low response time, making it ideal for a variety of surveillance applications. It has an audio input and built-in speakers.

VER-19LCD 19" Professional CCTV Monitor #MAVER19LCD.... **399.95**
VER-26LCD 26" LCD Color Monitor HDTV #MAVER26LCD..... **959.95**
VER-14LCD 14" LCD Color Monitor #MAVER14LCD..... **239.95**

**mace****SECURITY DESK****Winsted**

Wrap around se desk with riser, integrated cable management, large work surface, and keyboard shelf.

#WIE4685..... **2,709.50**

**DVR LOCK BOX****mace**

Ensure video evidence stays safe with this metal lock box. 21" wide, 20" deep, and 8" high. Fan included.

#MALOCKBOX..... **289.95**

MONITOR SHELF**Winsted**

#WI11093 Monitor / VCR Shelf..... **143.50**
#WI11081 Monitor Shelf **103.95**

LCD MONITOR WALL BRACKET

Tilt and Swivel wall bracket. Fits LCD Monitor up to 30".

#SAVM1S..... **Call**

SANUS SYSTEMS

TRANSMITTERS/TRANSCEIVERS

NVT

- #NPNV208AM Passive Video Transceiver.....**44.95**
- #NPNV214AM Passive Video Transceiver with Whip.....**43.50**
- #NPNV653T 1 Channel Active Video Transmitter.....**Call**
- #NPNV413A 4 Channel Passive Video Transceiver.....**264.95**
- #NPNV1613S 16-Channel Passive Compact Stub Hub.....**788.50**
- #NPNV1662 16-Channel Active Amplified Hub.....**3,199.50**



POWER ADAPTERS

Everfocus

- #EVPITAIL Male Power Adapter.....**2.95**
- #BOBP00089V 9 Volt Battery Holder.....**Call**
- #BOBP0007 12 VDC Battery Pack for 8 AA Batteries.....**12.95**
- #BOBP0024 12 VDC Battery Pack for 8 D Batteries.....**13.95**
- #MACVT501 Step Down Converter 24 VAC to 12 VDC.....**24.50**



POWER CABLES

Swann

- #SWSW271S15 Siamese Cable - 50 Feet / 15m.....**17.39**
- #SWSW271S30 Siamese Cable - 100 Feet / 30m.....**24.09**
- #SWSW271S91 Siamese Cable - 300 Feet / 91m.....**69.95**



POWER SUPPLY

Everfocus

- #EVAD1 12VDC 500ma.....**Call**



MGElectronics

- #MGMG2440 24V 40VA Screw In Transformer.....**9.95**

Bolide

Multi Channel Power

- #BOBP0050185 12VDC Regulated Power Supply
9-Out 5amp.....**69.95**
- #BOBP00501810 12VDC Regulated Power Supply
18-Out 10amp.....**64.95**
- #BOBP0049200W 24VAC 18A Power Supply
18-Output.....**99.95**



HOUSINGS, MOUNTS & ACCESSORIES

Bolide Video And Audio Cable Connectors

- BOBP0035 BOBP0036 BOBP0026 BOBP0028 BOBP0005 BOBP0023
- #BOBP0035 BNC Twist-On Male Connector.....**2.95**
- #BOBP0036 BNC Crimp Connector.....**2.95**
- #BOBP0026 BNC T-Connector.....**2.95**
- #BOBP0028 RCA Male To Male Coupler.....**1.95**
- #BOBP0005 RCA Female Coupler.....**2.95**
- #BOBP0023 RCA Female To BNC Male Connector.....**2.95**

Comprehensive BCK-2

Crimp Connector Kit

- #COBCK2 Crimp Kit with Crimper and 50 BNC.....**139.95**



Bolide Professional Grade Cable

- BOBP0033C BP0033CAT5
- #BOBP0033C 500' Combo Cable for Video and Power- White.....**94.95**
- #BOBP0033CB 500' Combo Cable for Video and Power- Black.....**98.95**
- #BOBP0033CW10 1000' Combo Cable for Video and Power- White.....**195.95**
- #BOBP0033CB10 1000' Combo Cable for Video and Power- Black.....**198.95**
- #BP0033CAT5 1000' UL Listed Cat5e Cable - Grey.....**Call**

Everfocus Outdoor Camera Housing

- #EVFH7153HB Outdoor Housing with Heater & Blower.....**28.95**
- #EVFH7153 Outdoor Camera Housing.....**22.50**



Lorex Infrared Illuminator

- #LOVQ2120 68 LED 35" Infrared Illuminator.....**Call**

Pelco Infrared Floodlight

- #PELL27WF 200' IR Floodlight with covert Filter.....**899.95**

Everfocus Housing Mounting Bracket

- #EVBA03 7" Plastic Mounting Bracket.....**7.95**
- #EVBA01 7" Aluminum Mounting Bracket.....**7.95**

SURVEILLANCE VIDEO LENSES

Model #	Mount	Focal Length	Aperture	CCD Format	Maximum Angle-of-View	Remarks	SKU #	Price
Tamron								
13FG04IRSQ	CS	4mm	f/1.2	1/3-1/4"	(1/3" 88.7°-34.0°)-(1/4" 69.1°-25.9°)	Auto Iris, Infrared Coated	#TA412DCL	39.95
13FG28IRSQ	CS	2.8	f/1.2	1/3-1/4"	(1/3" 88.7°-34.0°)-(1/4" 69.1°-25.9°)	Auto Iris, Infrared, Wide Angle	#TA2812DCL	44.95
13FG08IRSQ	CS	8mm	f/1.2	1/3-1/4"	(1/3" 53.6°-4.2°)-(1/4" 40.2°-3.1°)	Auto Iris, Infrared	#TA812DCL	39.95
13VG20100ASS	CS	20-100mm	f/1.6	1/3-1/4"	(1/3" 53.6°-4.2°)-(1/4" 40.2°-3.1°)	Auto Iris, Varifocal, Long Range	#TA2010016DCL	134.95
Pentax								
C70223DCPS	CS	2.8 to 12mm	f/1.4	1/3"	97.4° - 24.1°	Auto Iris, Varifocal	#PE281214AIDC	47.50
C70315DCPS	CS	3.5 to 8mm	f/1.0	1/3"	91° - 35.9°	Auto Iris, Varifocal	#PE35814AIDCQ	48.95
C70804DCPS	CS	8mm	f/1.2	1/3"	94.31°	Auto Iris	#PE812AIDC	Call
C70605	CS	6.3mm to 38mm	f/1.2	1/3-1/4"	(1/3"-93.21°-35.27°)-(1/4"-68.97°-26.45°)	Auto Iris, Varifocal, Day/Night	#PE633812AI	Call
C70509DCPS	CS	5mm to 50mm	f/1.8	1/3"	96.70° - 47.04°	Auto Iris, Varifocal	#PE55018AIDCQ	65.95
Fujinon								
YV28X28LASA2L	CS	2.8-8mm	f/0.95	1/3"	(1/3" 93°)-(1/4" 68°)	Auto Iris, Varifocal, Long Cable	#FUYY28X28LAS	49.95
YV27X29LR4AS	CS	2.9m-8mm	f/0.95	1/3-1/4"	(1/3" 99°)-(1/4" 74°)	Auto Iris, Varifocal, Low Light	#FUYY27X29LRS	Call
YF28ASA2LB	CS	2.8mm	f/1.3	1/3-1/4"	(1/3" 51°)-(1/4" 39°)	Wide Angle, Auto Iris, Low Light	#FUYY28A2S	49.95
YV10X5R4A2	CS	5-50mm	f/1.6	1/2"-1/3"-1/4"	(1/2" 95°54'-15°09')-(1/3" 72°24'-11°38') (1/4" - 54°25'-°37')	Zoom Varifocal, Low Light	#FUYY10X5R4A2	89.95
Visual Gate								
VL49	CS	4-9mm	f/1.8	1/3"	33° - 25°	Varifocal Board Lens	#VVL49	Call
Mace								
LENS-B1.78	C/CS	1.78mm	f/1.4	1/3"	Horizontal: 35.6° x 73.6°	Super Wide Angle Board Lens	#MALENSB178	Call
EverFocus								
FL-8020	C/CS	3.6mm	f/1.4	1/3"	Horizontal: 35.6° x 73.6°	Board Lens	#EVFL8020	12.95
Marshall								
VZCAM4	C/CS	3.6mm	f/1.4	1/3"	Horizontal: 35.6° x 73.6°	Pinhole Lens Kit for Camcorders	#MAVZCAM4	194.95

