

LISTEN.
THINK.
SOLVE.®

T101 - Migrating your HMI System



PUBLIC

Agenda

Why Migrate to Integrated Architecture

How to Migrate

What's New in HMI Software

RSView32 to FactoryTalk View SE migrations

FactoryTalk View SE / ME 64-bit database conversion

Competitive software conversions



RA Product Lifecycle Stages



Active

- The most current product offering within a category of product.

Active Mature

- Products fully supported and available, but a newer family within the product category is available. Can realize benefits from migrating to newer family.

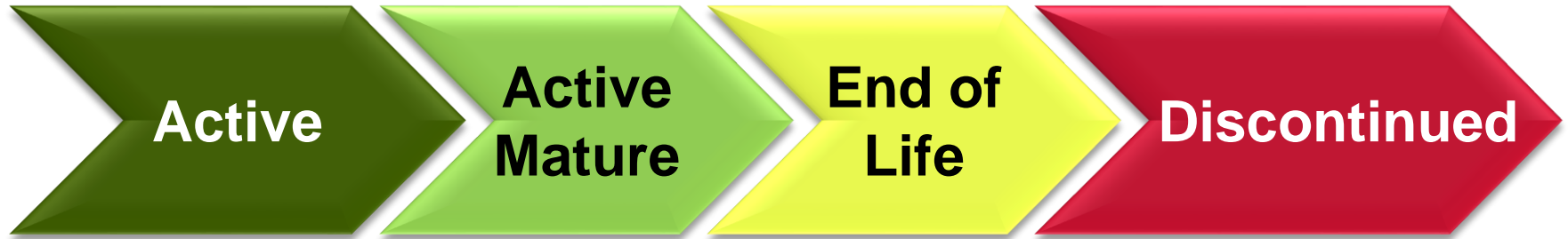
End of Life

- A product discontinued date has been announced. Actively execute migrations and/or last time buys.

Discontinued

- New product is no longer available. Repair/exchange services may still be available.

Product Lifecycle



PanelView
Plus 7

PanelView
Plus 6

PanelView
Standard



Product Lifecycle Status

Capabilities

Migration Solutions

- Overview
- Why Rockwell Automation?
- Lifecycle Extension & Migrations
- Product Lifecycle Status

Literature & Media

- Product Lifecycle Graphic [JPG]
- Migration Solutions Brochure [PDF]
- Installed Base Evaluation Animated Video

Search Results

NEW SEARCH

PRODUCT ID	PRODUCT DESCRIPTION	LIFECYCLE STATUS	DISCONTINUED DATE
1785-L40B	PLC-5 PROCESSOR	■ DISCONTINUED	12/31/2014

Lifecycle Status Key

- **Active:** Most current offering within a product category.
- **Active Mature:** Product is fully supported, but a newer product exists. Gain value by migrating.
- **End of Life:** Discontinued date announced; actively execute migrations and last time buys.
- **Discontinued:** New product no longer manufactured/procured; repair/exchange services may be available.

* In some instances, certain product IDs may not appear in the lifecycle database. If you are looking for lifecycle information on a specific catalog number that does not appear in these Search Results, please contact **Customer Care** for assistance.

www.rockwellautomation.com/legacy

Migrate to Integrated Architecture

**Rockwell
Automation**



INTEGRATED PRODUCTION & PERFORMANCE SUITE

Performance & Visibility

FactoryTalk® View
Studio

6.00.00.16 (CPR 9 SR 3)

Allen-Bradley • Rockwell Software **Rockwell Automation**

Copyright © 2010 Rockwell Automation, Inc. All Rights Reserved.
This program is protected by U.S. and international copyright laws as described in the about box.

The image shows the software box art for FactoryTalk View Studio. It features a large magnifying glass over a gauge with a red needle pointing to 90.25. Above the magnifying glass are several circular icons representing different data points. The text 'INTEGRATED PRODUCTION & PERFORMANCE SUITE' is at the top, followed by 'Performance & Visibility'. The product name 'FactoryTalk View Studio' is prominently displayed, along with the version number '6.00.00.16 (CPR 9 SR 3)'. The Rockwell Automation logo is at the bottom right. A small copyright notice is at the very bottom.



PUBLIC

Value of Integrated Architecture

- Reduce Development Time with FactoryTalk View software
 - Global Objects and Faceplates
 - Seamless Logix Connectivity
 - Direct tag browsing
 - Macros and Recipe Management
- Increase Productivity
 - Trending and Datalogging
 - PDF Viewer, MS Office Viewers
 - Email
 - Web browser
 - Backup/Restore
- Keep connected with your Plant Floor
 - FactoryTalk ViewPoint
 - VNC
 - FTP

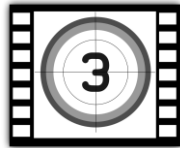


Productivity Tools

- Tools to get the job done efficiently!



PDF
Reader



Media
Player



Email



Datalog



Web
Browser



Office Viewers



Backup / Restore

Mobility Tools



FactoryTalk ViewPoint



VNC (Virtual Network Computing)



FTP (File Transfer Protocol)



PanelView Plus 7

More Screen Options Greater Resolutions Additional Certifications

- New Displays
 - Increased screen resolution
 - Wide screen options
 - Additional sizes – from 4” to 19”
- Certifications:
 - ATEX
 - INMetro, EAC – Release 2
 - Marine (Future Performance models)
 - IP66, IP54, NEMA 12, NEMA 13 and NEMA 4X

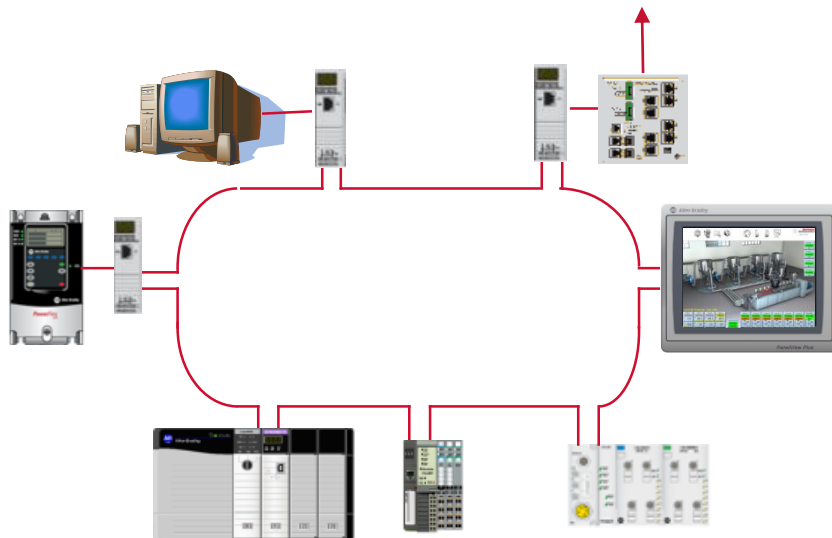
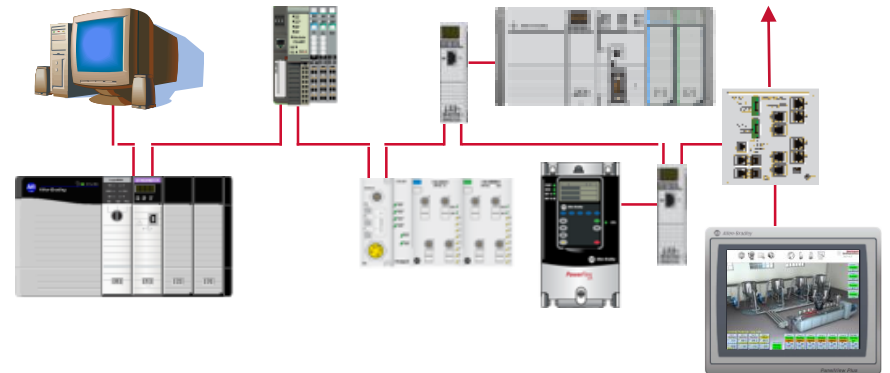


PanelView Plus 7

Ethernet Connectivity

**Rockwell
Automation**

PanelView Plus 7 Standard version include an embedded Ethernet Port.



PanelView Plus 7 Performance line comes with an embedded switch (DLR).

Release information subject to change

Design-time security

- Each project has its own private security configuration
- Restore a project (MER/APA) without overwriting any other project's security configuration

Updated Domain authentication

- Allows panel to authenticate with Server 2008/2012 domains
- Requires LDAP support to be enabled in end-user's domain

Runtime user management

- Add and delete FactoryTalk users during runtime
- Change user's group membership during runtime

Compatibility

- Windows 8 and Windows Server 2012 Support
- PanelView 7 Support

Agenda

Why Migrate to Integrated Architecture

How to Migrate

What's New in HMI Software

RSView32 to FactoryTalk View SE migrations

FactoryTalk View SE / ME 64-bit database conversion

Competitive software conversions



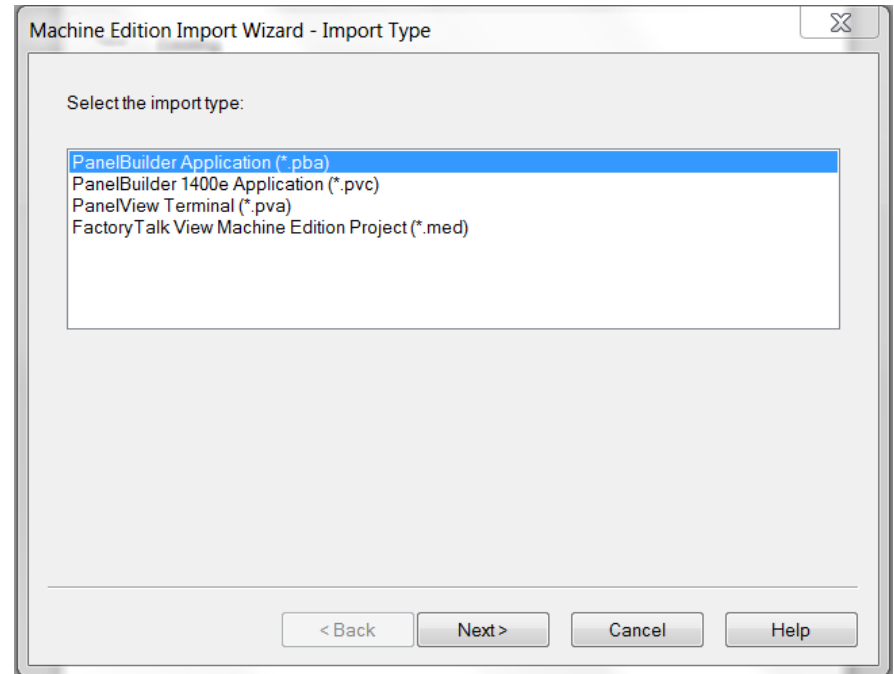
PanelBuilder32 to FactoryTalk View ME

1. Open your PanelView Standard application in FactoryTalk View Studio.
2. Save it as a PanelView Plus compatible application.

80% of the time, no further modification is required

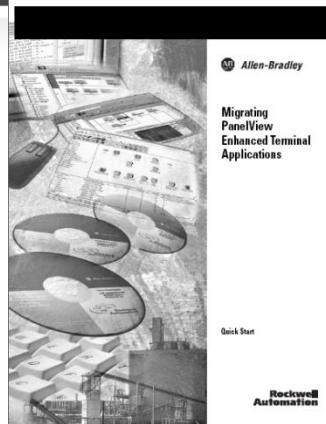
Conversion log in FTView Studio identifies any features not supported by PanelView Plus 6 and 7

Typically may want to take advantage of the enhanced features and graphics available in PanelView Plus 6 and 7



PanelBuilder32 Migration Guide

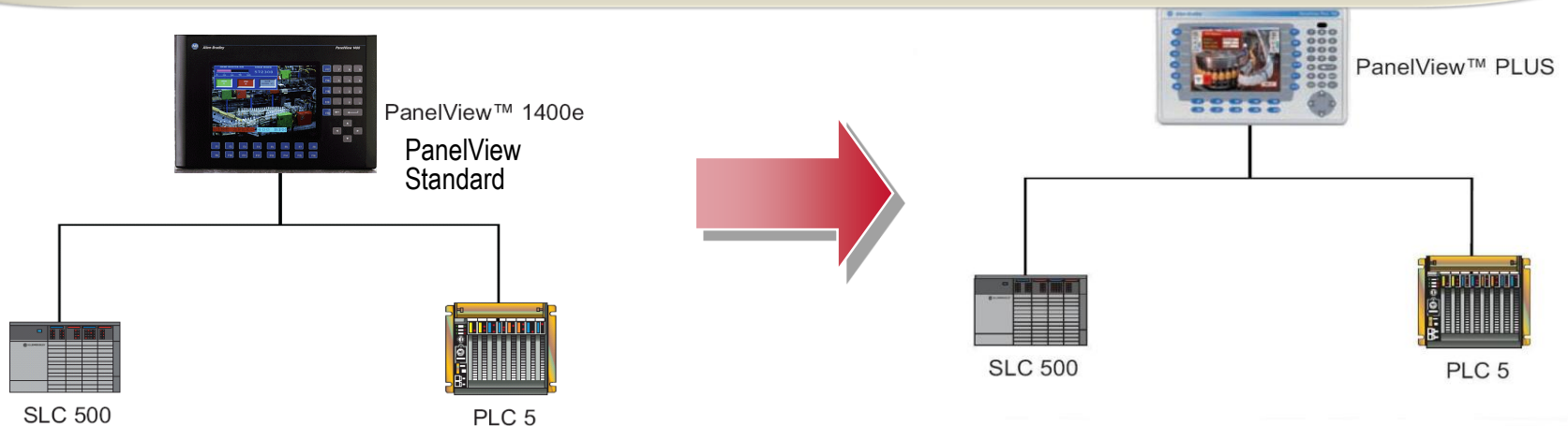
PanelBuilder32 Migration to FactoryTalk View ME



Migrating PanelBuilder32 Applications

Publication: 2711P-AP001A-EN-P

This document will provide guidelines and procedures for migrating a PanelView Standard terminal and applications to the PanelView Plus terminal platform.



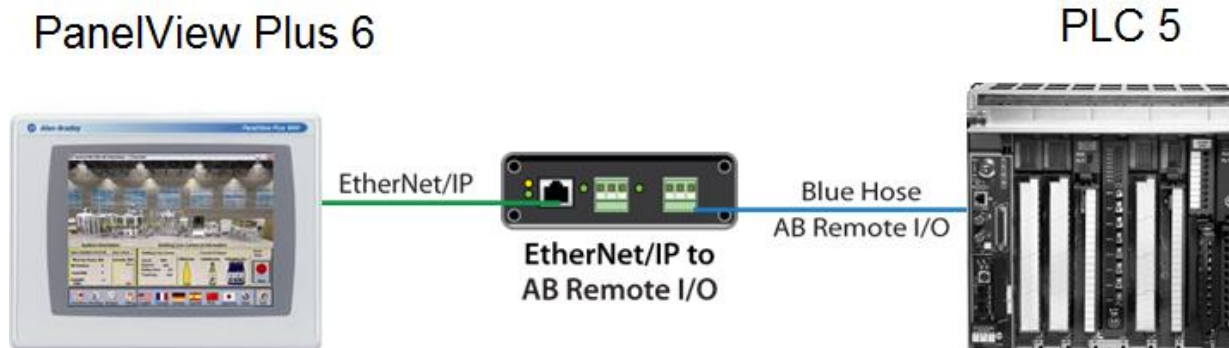
Prosoft Ethernet/IP to Remote I/O and DH+

- ProSoft Part Number: AN-X-AB-DHRIO
- EtherNet/IP HMI Adapter to Remote I/O and DH+
- Upgrade your HMIs without replacing your Control System

From -->

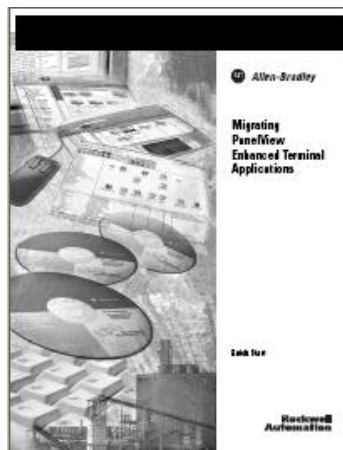
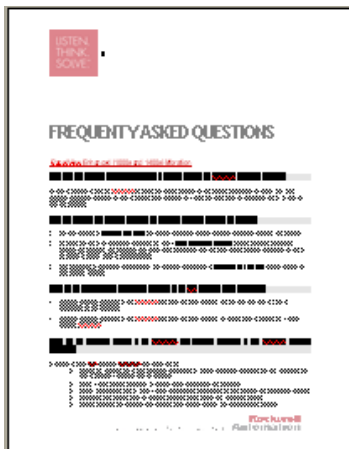


To -->



PanelView Migration Information

Migration Tools	Migration Links
Migration Solutions - Lifecycle Extension & Migrations	http://www.rockwellautomation.com/solutions-services/capabilities/migration-solutions/overview.page
On-Site Conversion & Migration Services	http://www.rockwellautomation.com/services/onsite
Legacy PanelView to PanelView Plus Catalog Conversion	http://literature.rockwellautomation.com/idc/groups/literature/documents/ap/2711p-ap002_-en-p.pdf
Migrating PanelView Standard Applications	http://literature.rockwellautomation.com/idc/groups/literature/documents/ap/2711p-ap001_-en-p.pdf
StepForward Incentives Program	http://www.ab.com/stepforward/
ProSoft Ethernet/IP to Remote I/O or DH+	http://www.prosoft-technology.com/prosoft/products/stand_alone_gateways/ethernet/ethernet_ip/an_x_ab_dhrio#



Agenda

Why Migrate to Integrated Architecture

How to Migrate

What's New in HMI Software

RSView32 to FactoryTalk View SE migrations

FactoryTalk View SE / ME 64-bit database conversion

Competitive software conversions



A View for Every Manufacturing Scenario

**Rockwell
Automation**

FactoryTalk View Machine Edition

Panel HMI



PanelView Plus and Compact

FactoryTalk View Site Edition

Scalable PC Based HMI



Industrial and Non-Industrial Computers and Monitors

FactoryTalk ViewPoint

Web-Based HMI



Summary of FT View v8.0 release

- Products and Services Released:
 - FactoryTalk View Site Edition 8.0
 - FactoryTalk View Machine Edition 8.0
 - FactoryTalk ViewPoint 8.0
 - FactoryTalk Services Platform 2.70
 - FactoryTalk Alarms and Events 2.70
 - RSLinx Enterprise 5.70
 - RSLinx Classic 3.70
 - FactoryTalk Activation 3.62.01

FactoryTalk View SE v8.0

August 2014 Release

**Rockwell
Automation**

Streamlined Installation

- Unattended Install
- Streamlined Client Install
- Uninstall FactoryTalk View Tool
- FT Historian Connectivity Tools

Improved Run-Time Experience

- **Confirmation Popup***
- **Button Enable Disable***
- Improved display of screen values
- **Enhanced surface area for touch animation***
- New User Group Security functions

Alarming Improvements

- Alarm Severity Improvements
- Configure Alarm Sounds for Banner
- Out of Scope alarm occurrence handling
- Alarm Banner Sort Order improvements
- Alarm Log Viewer Improvements

Configuration and Application Building

- Capture Value before Change
- Remote Studio for Network Station
- VBA import and export

Expanded Operating System Support

- Windows 8
- Windows 8.1 Update
- Windows 2012 Server R2
- Cache Management Tool
- Last release supporting Older Microsoft Operating Systems

* - Supported in ViewPoint 8.0



Agenda

Why Migrate to Integrated Architecture

How to Migrate

What's New in HMI Software

RSView32 to FactoryTalk View SE migrations

FactoryTalk View SE / ME 64-bit database conversion

Competitive software conversions



Product Lifecycle



FactoryTalk® View ME
FactoryTalk® View SE

RSView32™
Expand Your View



Changing Technology

- Platform evolution - operating system and PC
 - Windows XP– MS support ended **April 8, 2014**
 - **No software updates**
 - **No security updates for virus protection!**
 - **No new driver support**
 - **FT View v8.0 is final release to support Windows XP**
 - 64-bit platform and operating systems becoming standard
- Data sharing with the Integrated Architecture and FactoryTalk
 - Distinction between HMI and other systems starting to blur
 - Better integration with controllers
 - Integrate with FT Historian, FT AssetCentre, VantagePoint and ViewPoint
- Adoption of commercial advancements in technology
 - Virtualization can save capital expense in server infrastructure and administration costs
 - Increased demand for mobile HMI solutions
 - Modern HMI environment for new personnel entering the workforce



FactoryTalk[®]

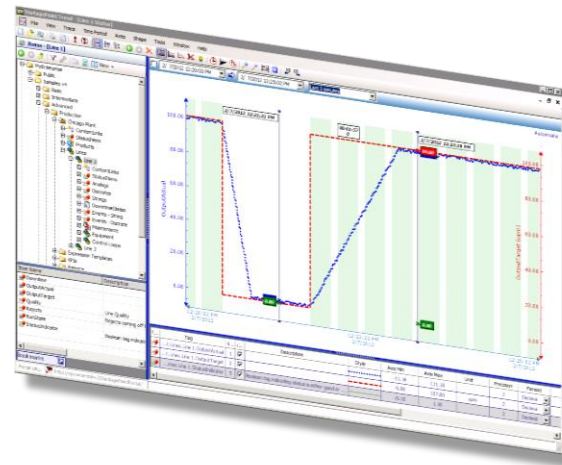
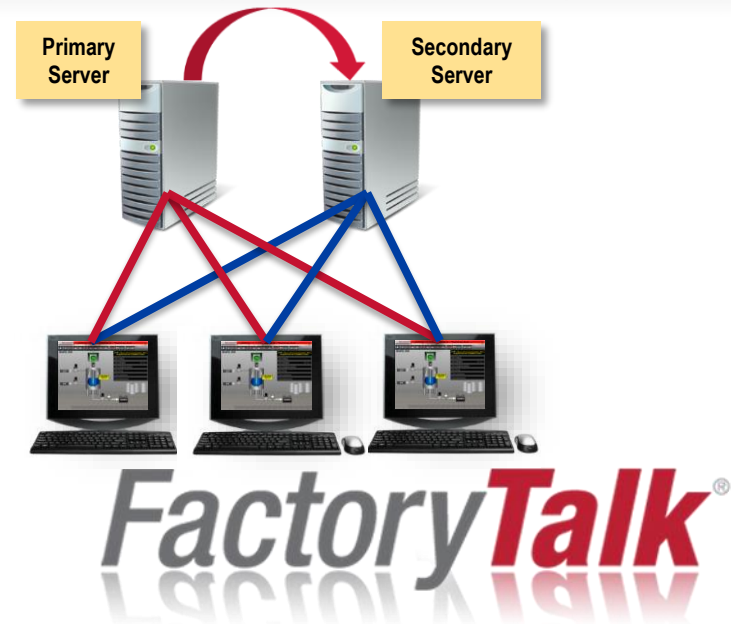
What is the status of RSView32?

- Do I *have* to migrate - is RSView32 going away?
 - No - RSView32 will be supported as long as 32-bit systems are available
 - RSView32 v7.60 does provide support for Windows 7 32-bit
 - However, there are no plans for RSView32 to support 64-bit operating systems
 - If moving to 64-bit systems, you will need to either migrate to FactoryTalk View SE or employ a solution such as virtualization
- Many RSView32 systems are deployed on computers with Windows XP – IT departments may have notified the plant to develop a migration plan



Benefits of migrating to FactoryTalk View SE

- Application development tools
- Redundancy
- FactoryTalk Live Data and Direct Referencing
- FactoryTalk Services Platform
- Audit trails and e-signature for regulatory compliance
- FactoryTalk ViewPoint
- Client-side VBA (client-stored and executed)
- Information product integration with FactoryTalk VantagePoint, Historian ME



About FactoryTalk View Studio

- FactoryTalk View Studio is the single development environment for both FactoryTalk View SE and ME
 - Is also the tool used to migrate RSVIEW32 applications to FactoryTalk View SE
- Four types of applications can be created in FactoryTalk View Studio
 - **Network Distributed (SE)** - multi-client, multi-server application with components running on different machines
 - **Network Station (SE)** – single-client application with all components running on one machine, but with the ability to connect to system components on remote machines
 - **Local Station (SE)** – single-client application with all components running on a single machine
 - **FactoryTalk View Machine Edition (ME)** – application that runs on either a PanelView Plus terminal or on a PC running FactoryTalk View ME Station

How to migrate an RSView32 application to FactoryTalk View SE

Create a FactoryTalk View SE project

- Select the type of application you want to create: Site Edition (network distributed or network station) or Site Edition (local) and give it a name

The screenshot shows a dialog box titled "New/Open Site Edition (Network) Application". It has two tabs: "New" (selected) and "Existing". The "New" tab contains the following fields:

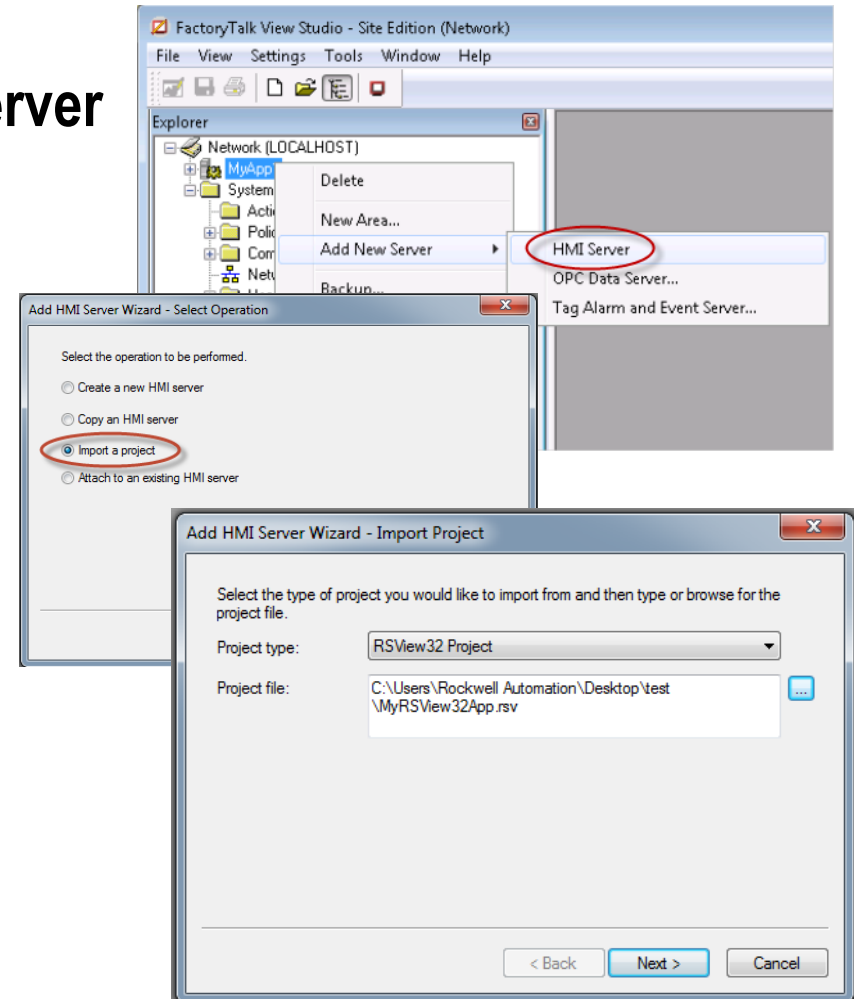
- Application name:** A text input field with a cursor.
- Description:** A large text area.
- Language:** A dropdown menu currently showing "English (United States), en-US".

At the bottom of the dialog, there are two buttons: "Create" and "Cancel".

How to migrate an RSView32 application to FactoryTalk View SE

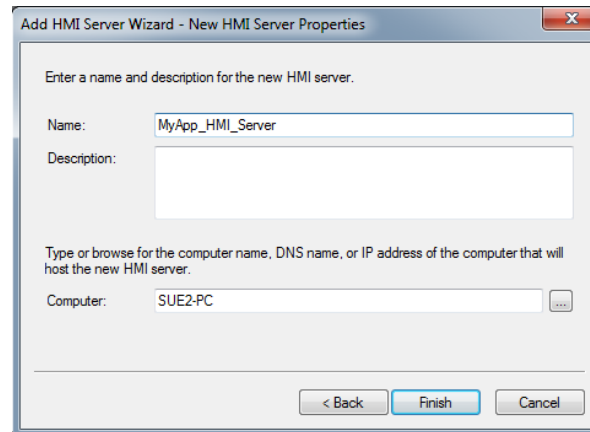
Add a new Area, and then create a new HMI Server in it

- Right-click on the application and select **Add New Server > HMI Server**
- In the HMI Server Wizard, select **Import a project** and click **Next**
- Browse to the RSView32 project that you are importing



How to migrate an RSView32 application to FactoryTalk View SE

- Provide a name for the new HMI Server and select the computer that will host the HMI server; click **Finish** to import the RSView32 application



- The RSView32 project is imported into FactoryTalk View SE
 - You will see displays and the tag database in the project as well as:
 - Animations
 - Text
 - Alarms
 - Expressions
 - Libraries
 - Images
 - Macros
 - Global Keys
 - Parameter Files
 - Recipes
 - Derived Tags
 - Events

How to migrate an RSView32 application to FactoryTalk View SE

- Finishing steps
 - Create a **data server** to communicate with the controller – see **AID 29663**
 - Convert or configure alarms – HMI tag alarms can be converted to FactoryTalk Alarms; controller-based alarms are available for use in View SE through FactoryTalk Alarms and Events
 - Configure startup components and create client files
 - Convert graphics to use direct referencing
 - Migrate functionality created with RSView32 VBA – see **AID 51770**
 - Create Users and configure Security
 - Migrate RSView32 extension functionality
- Be aware of best practices in FactoryTalk View SE
 - **AID 37110** has links to many best practice documents, as well as patches and application notes



Utilities and tools available for migration

■ Alarm Migration tool

- Used to convert HMI alarms to FactoryTalk Alarms
- Converts alarm tags to a format usable by the FT Alarms and Events server
- Available in Knowledge Base **AID 45583**

■ Tag Import and Export wizard

- Built into FactoryTalk View Studio
- Used to export HMI tag information to a .CSV file, which can then be:
 - Imported into a FactoryTalk Alarms and Events server
 - Edited using Excel, then re-imported into an application

Utilities and tools available for migration

- **Legacy Tag Database Conversion utility**
 - Installed with FactoryTalk View v6.1, 7.0, or 8.0
 - Also available in Knowledge Base AID **450509**
 - Converts tag database from old (Watcom) format to new (SQL Server Express) format that supports 64-bit systems
 - Allows you to import RSVIEW32 project into FactoryTalk View on 64-bit machine

- **HMI Tag to Direct Reference Converter Wizard**
 - Converts HMI tag database references in graphic objects to direct controller references
 - Available in Knowledge Base AID **31289**
 - Can be used with both View SE and View ME



Helpful links

- **RSView32 to FactoryTalk View SE Migration Guide – Lit Library Doc ID: FTALK-QR004A-EN-P**
 - Covers details on what does and does not convert, importing RSView32 app into FT View SE
- Knowledge Base articles
 - **27708- RSView32 to View SE Conversion Guidelines**
 - **46786 – How to convert an RSView project to FactoryTalk View SE Distributed**
 - **51770 – Sample app showing VBA migration**
 - **70818 – FactoryTalk Alarms and Events with Win-911**
 - **57990 – FactoryTalk ViewPoint tips and best practices**
 - **40891 – FactoryTalk View SE Server Redundancy Guidelines**



Rockwell Automation Support Center

27708 - RSView32 to View SE Conversion Guidelines

Access Level: TechConnect
 Date Created: 02/18/2004 12:00 AM
 Last Updated: 03/08/2013 05:19 AM

I would like to convert my RSView32 to FactoryTalk View SE. Will everything convert?

In most cases, your application will convert and execute successfully; however, there are a handful of RSView32 project properties that will not directly convert to View SE.

In addition to this technote, the following document is also available from the Rockwell Literature Library:
[RSView32 to FactoryTalk View SE Migration](#)

Helpful links

- RSVIEW32 to FT View SE migration site
 - <http://campaign.rockwellautomation.com/hmi-home>
- Collection of tools to help with decisions and process of migrating
- Many new videos there covering why you should think about migrating, technical tips and a demo of migrating an app, and success stories



Agenda

Why Migrate to Integrated Architecture

How to Migrate

What's New in HMI Software

RSView32 to FactoryTalk View SE migrations

FactoryTalk View SE / ME 64-bit database conversion

Competitive software conversions



Moving to a 64-bit system

- Be aware that a 64-bit OS **requires** FT View SE v6.1 or later
 - RSVIEW32 does NOT support 64-bit operating systems
 - Neither do pre-v6.1 versions of FT View SE / ME
- In v6.1 of FactoryTalk View, database format changed to support 64-bit
 - Now based on SQL Server
- Older projects need the tag DB converted before use on 64-bit OS
- Couple ways to do this:
 - Open older View SE project in v6.1 or later - automatically converts DB
 - Use the Legacy Tag Database Conversion Tool to convert tag DB

AID 450509 – FactoryTalk View SE and ME v6.1 Legacy Tag Database Conversion Tool

Converting a pre-v6.1 FT View project

32-bit machine with pre-v6.1 FT View

- Install Legacy Tag DB Converter and run it
- Select project to be converted and export Legacy Tag Database
- .CSV files will be created in project folder
- Copy entire folder over to 64-bit machine
- Can use Application Manager to create archive .APA for ME project

64-bit machine with v6.1 or later FT View

- For ME .APA, first run Application Manager to restore project
- Run Legacy Tag DB Converter (installed with FT View v6.1+)
- Select FT View SE/ME application type and browse to project folder
- Tag DB is converted...can now open application in FT View v6.1 or later!

Converting an RSView32 project

32-bit machine with RSView32

- Install Legacy Tag DB Converter and run it
- Select RSView32 project to be converted and export Legacy Tag Database
- .CSV files will be created in RSView32 project folder
- Copy entire folder over to 64-bit machine, including .CSV files

64-bit machine with V6.1 or later FT View SE

- Run Legacy Tag DB Converter (installed with FT View v6.1 or later)
- Create FT View tag DB in new format
- Select RSView32 application type and browse to project folder
- Tag DB is converted...can now import RSView32 project into FT View SE v6.1 or later!

Legacy Tag Database Conversion - Summary

- Users who do not plan to use FactoryTalk View on a 64-bit OS **do not need** to use the utility!
 - Opening a pre-v6.1 project in FactoryTalk View v6.1 or 7.0 on a 32-bit OS will automatically convert the tag database to SQL Server 2008 R2 Express
 - Importing an RSView32 project into FactoryTalk View v6.1 or 7.0 (32-bit) will also automatically convert the tag database
- Users who are planning to use pre-v6.1 FactoryTalk View projects on a 64-bit OS are **required** to use the utility

Agenda

Why Migrate to Integrated Architecture

How to Migrate

What's New in HMI Software

RSView32 to FactoryTalk View SE migrations

FactoryTalk View SE / ME 64-bit database conversion

Competitive software conversions



Competitive application conversions

- StepForward applies for any competitor HMI software migration
 - Trade-in one for one license toward FactoryTalk View SE
- Competitive Application Conversion Utilities
 - For **Wonderware InTouch** and **Intellution iFIX/FIX32**
 - Not a complete conversion!
 - Tag DB and displays convert, scripts and ActiveX do not
 - Helps get conversion started
 - For details talk to your distributor or RA sales

STEPFORWARD

ROCKWELL SOFTWARE - CONFIDENTIAL


[Print this page](#)

HMI Application Conversion Utilities

Rockwell Automation provides an HMI project conversion service for Wonderware InTouch and Intellution iFIX/FIX. This service is currently available to our channel partners at no charge, and is available only through the Rockwell Software Extranet.

Converted HMI projects will require verification and testing by someone who will take complete system responsibility, such as a Strategic Provider or GMS.

HMI application conversion utilities convert only graphic and database files; they do not convert scripts. In addition, because the underlying architectures are different, file names, tag names, alarm levels, and some other project features may not have exact equivalents. Both utilities do create exception reports that list items that were not converted.



CST
ACU

LISTEN.
THINK.
SOLVE.®

Thank you!



PUBLIC