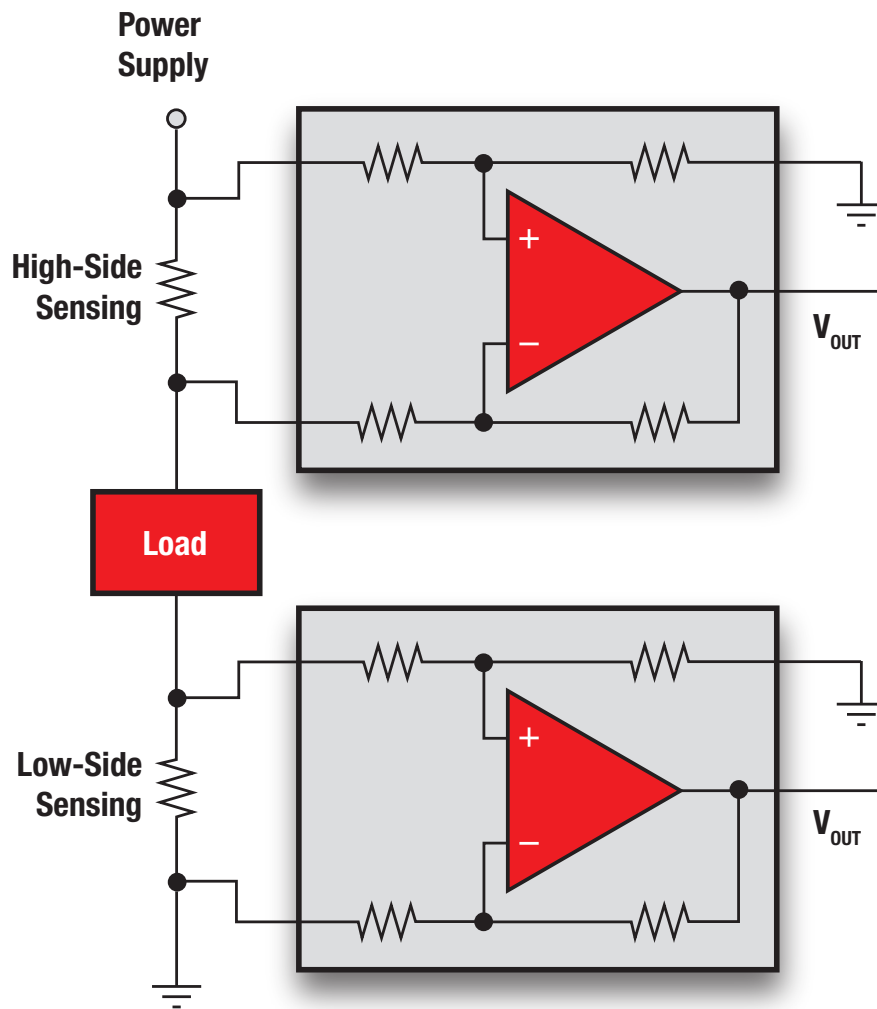




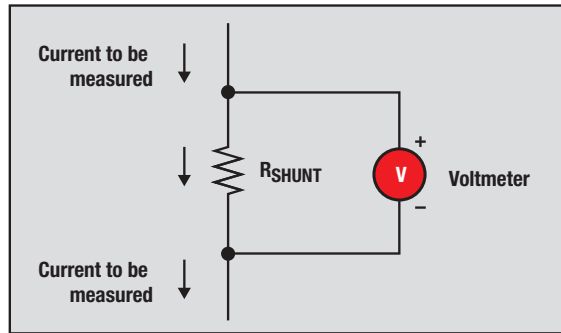
# Current Shunt Monitors



# Current Shunt Monitors

## What are Current Shunt Monitors?

- Current shunt monitors are also referred to as current sense amplifiers.
- Current shunt monitors are designed to monitor the current flow by measuring the voltage drop across a resistor placed in the current path.
- Current sense amplifiers tend to be easier to design, more precise, less prone to noise and lower cost than magnetic current sensors.



## Key Parameters

### Common Mode Range:

This specification defines the DC voltage range at the input of an amplifier with respect to ground. Current shunt monitors are typically designed to accept common mode voltages well beyond the chip supply voltage. For example, the INA282 is capable of accepting a common mode voltage from -14V to +80V while running on a supply as low as 2.7V.

### Offset Voltage:

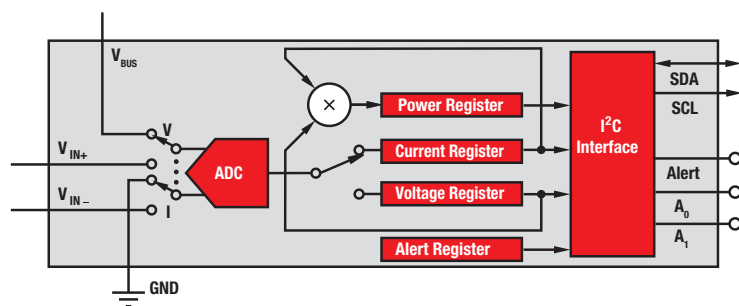
The differential DC error at the input of the amplifier. Historically, to reduce the impact of amplifiers with high offsets, larger shunt resistors are used to increase the measured voltage drop. Today, TI is able to offer current sensing solutions with offsets as low as 10 $\mu$ V, enabling higher precision measurements at low currents and the use of smaller shunt resistances for improved system efficiency.

### CMRR

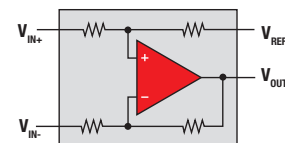
**(Common Mode Rejection Ratio):** CMRR is the ability of the amplifier to reject signals common to the differential inputs. This is important in the ability to measure small signals superimposed upon a large voltage. TI's portfolio offers solutions with CMRR as high as 140dB.

## Output Types

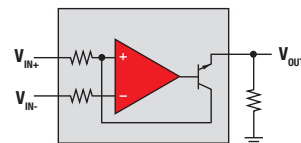
**Digital Output:** Simple all-in-one solution integrating the ADC/MUX with programmable switching. Provides measurements in amps, volts and watts across the I<sup>2</sup>C interface for a complete power monitoring solution.



**Voltage Output:** High precision, lowest power and industry's smallest form factors. Fixed gain options ranging from 14V/V to 1000V/V. Variable gain may be set through an external resistor.



**Current Output:** Variable gain set through external resistor. Highest bandwidth options.



# Current Shunt Monitors

## Low-Side Measurements

### Advantages:

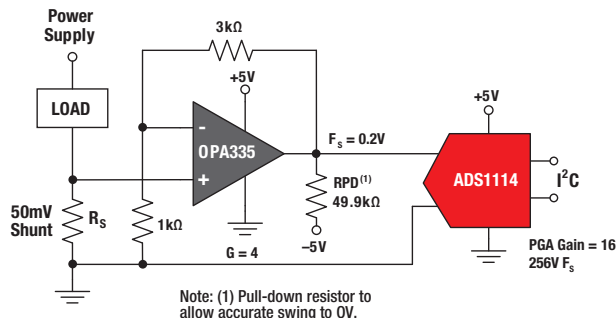
- Typically only requires an op amp such as OPA335
  - Straightforward, easy
  - Inexpensive

### Disadvantages:

- Undesirable resistance in the load's ground path
- Cannot detect fault conditions (short/open circuits)
- Requires precision external components to achieve and maintain high accuracy

**Low-side** current sensing techniques connect the current sense element between the load and ground.

**When to choose low-side sensing:** Always choose low-side sensing if the system can tolerate disturbances on the ground path.



## High-Side Measurements

### Advantages:

- Eliminates ground disturbances associated with low-side sensing
- Able to detect fault conditions

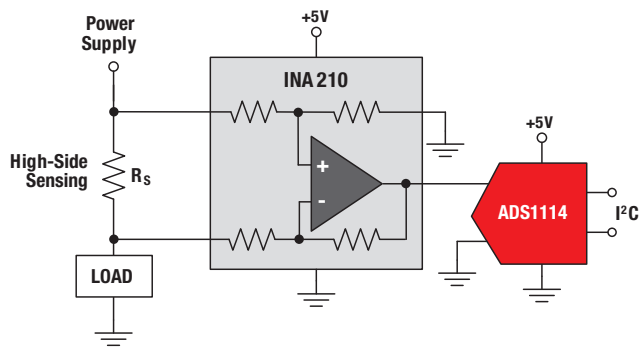
### Disadvantages:

- Difficult to use standard op amp. Resistors must be precisely matched to obtain acceptable common mode rejection ratios (CMRR)
  - A 0.01% deviation in resistor value lowers the CMRR to 86dB approach
  - A 0.1% deviation in resistor value lowers the CMRR to 66dB
  - A 1% deviation in resistor value lowers the CMRR to 46dB
- Must withstand very high, dynamic changes in common mode voltage

**High-side** current sensing techniques connect the current sense element between the supply and the load.

**When to choose high-side sensing:**

- System cannot tolerate ground disturbance of low side sensing
- System needs to be able to identify shorts to ground



## Low-Side Measurements With a High-Side Monitor

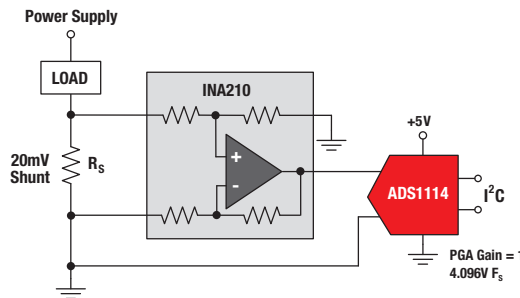
### Advantages over op amps as a low-side monitor:

- Integrated gain resistors
  - Excellent matching that requires more expensive external precision resistors with an op amp approach
  - Integrated resistors approach reduces board space requirements

### Disadvantages over op amps:

- Fixed gain settings reduce flexibility in maximizing the full-scale range of the following ADC stage

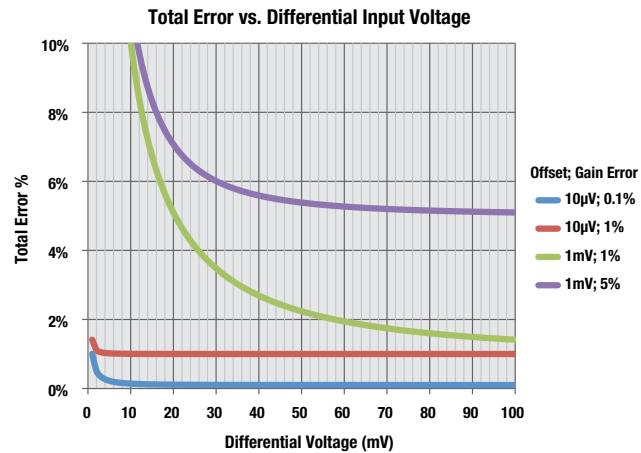
**High-side monitors** are designed to accommodate input voltages that exceed the power supply voltage. However, many of our current shunt monitors have common-mode ranges that include or even go below ground. This makes them excellent low-side current shunt monitors as well.



# Current Shunt Monitors

## Total Error

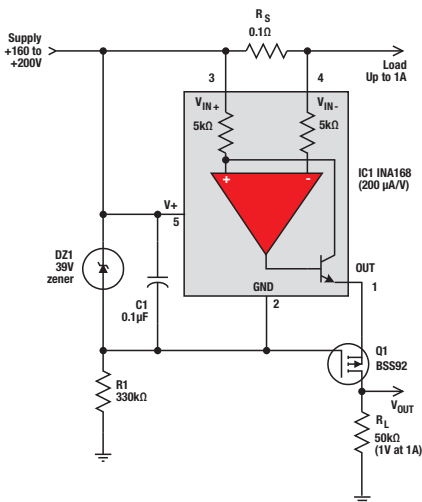
- For small differential signals at the input, the error is dominated by the amplifier's offset voltage. Low input offsets are critical to achieving accurate measurements at the low end of the dynamic range.
- For large differential signals at the input, the error is dominated by the amplifier's gain error.



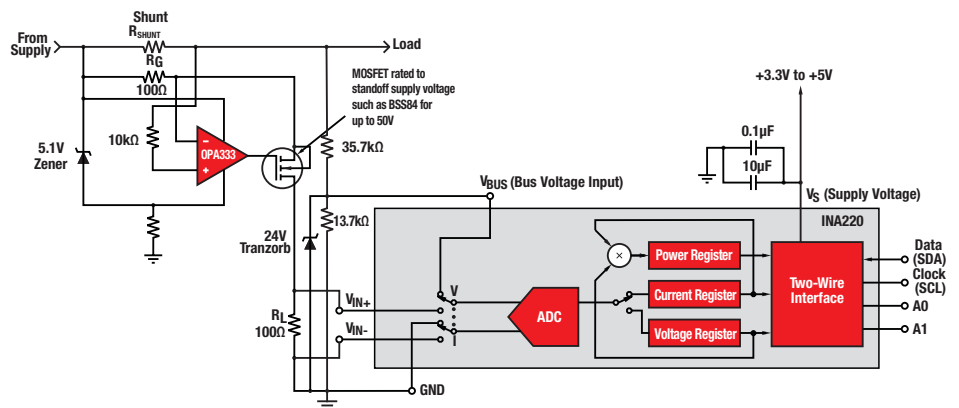
## Extending the Common Mode Range

With additional circuitry, current shunts can be configured to operate beyond the specified common mode range by using one of the following techniques.

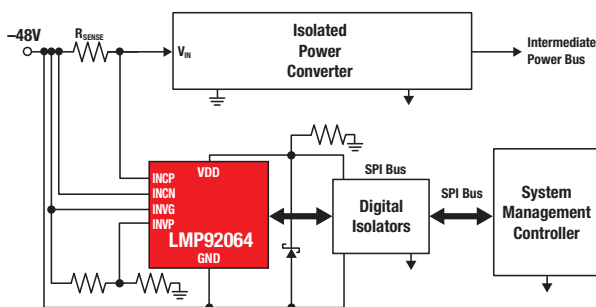
### Example 1: MOSFET and Zener



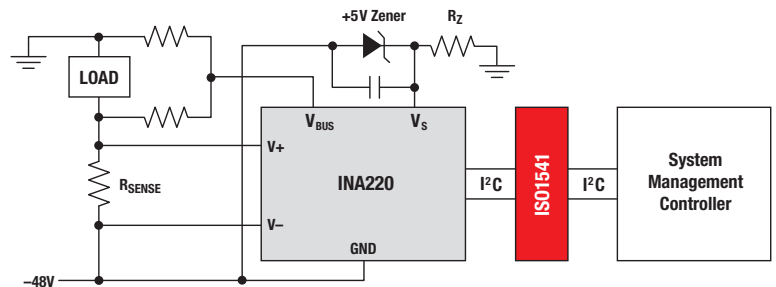
### Example 2: Current Follower



### Example 3: Isolated SPI Interface



### Example 4: Isolated I2C Interface



# Current Shunt Monitors

## Featured Products

**INA226:** Highest precision solution on the market

- Integrated ADC and MUX with programmable sampling
- Common mode range = 0V to 36V
- Offset (max) = 10 $\mu$ V
- Gain error (max) = 0.1%
- CMRR (typ) = 140dB
- Lower cost alternative: INA219, INA230

**INA210:** Precision voltage output

- Gain options: 50V/V, 100V/V, 200V/V, 500V/V, 1000V/V
- Common mode range: -0.3V to 26V
- Offset (max) = 35 $\mu$ V
- Gain error (max) = 1%
- CMRR (typ) = 140dB
- Lower cost alternative: INA199

**INA216:** Designed for portable battery powered applications

- Gain options: 25V/V, 50V/V, 100V/V, 200V/V
- Common mode range = 1.8V to 5.5V
- Offset (max) = 75 $\mu$ V
- Gain error (max) = 0.2%
- Quiescent current = 25 $\mu$ A
- CMRR (typ) = 108dB
- 0.76 x 0.76mm WCSP or QFN package available

**INA3221:** Triple-channel digital shunt and bus voltage monitor

- Integrated ADC and MUX with programmable sampling
- Common mode range = 0V to 26V
- Offset error (max) = 80 $\mu$ V
- Gain error (max): 0.5%
- Quiescent current = 450 $\mu$ A

**INA282:** Widest common mode range + precision

- Common mode range = -14V to 80V
- Offset (max) = 70 $\mu$ V
- Offset drift (max) = 1.5 $\mu$ V/ $^{\circ}$ C
- Gain error (max) = 1.4%
- CMRR (typ) = 140dB
- Lower cost alternative: INA193, LMP8601

**LMP8640:** High bandwidth and high voltage

- Bandwidth = 950kHz
- Common mode range: -2V to 76V
- Offset (max) = 900 $\mu$ V
- Gain error = 0.25%
- CMRR (min) = 103dB
- Lower cost alternative: LMP8645

**AMC1200:** 4kV isolated amplifier

- Offset (max) = 1.5mV
- Offset drift (max) = 10 $\mu$ V/K
- Gain error (max) = 1%
- CMRR (typ) = 108dB

**LMP8481:** High voltage

- Bandwidth = 270kHz
- Common mode range = 4.0V to 76V
- Offset (max) = 400 $\mu$ V
- Gain error (max) = 1.2%
- CMRR (typ) = 124dB
- Lower cost alternative: LMP8480

**LMP92064:** Simultaneous sampling current/voltage monitor

- 125ksamples/sec
- Bandwidth = 70kHz
- Offset (max) = 60 $\mu$ V
- Gain error (max) = 0.75%

**INA225:** Programmable gain, zero-drift current sense amplifier

- 4-pin selectable gain settings
- Bandwidth = 100kHz @ 100V/V
- Offset (max) = 125 $\mu$ V
- Gain error (max) = 0.50%

**INA300:** Over current detector

- Input/output response time = 10 $\mu$ s
- Programmable threshold: 0 to 250mV
- Hysteresis of 2, 5, or 10mV

### Applications:

- Battery gauge: (Coulomb Counting)
- Power supplies
- Inductive charging
- Graphics cards
- Desktops / laptops / servers
- Tablets / E-books
- Smartphones & feature phones
- Basestations
- Networking
- Industrial automation
- Automotive
- Medical
- Motor control
- Battery backups
- Inverters
- Solar

# TI Worldwide Technical Support

---

## Internet

### TI Semiconductor Product Information Center Home Page

[support.ti.com](http://support.ti.com)

### TI E2E™ Community Home Page

[e2e.ti.com](http://e2e.ti.com)

## Product Information Centers

<b>Americas</b>	Phone	+1(512) 434-1560
<b>Brazil</b>	Phone	0800-891-2616
<b>Mexico</b>	Phone	0800-670-7544
	Fax	+1(972) 927-6377
	Internet/Email	<a href="http://support.ti.com/sc/pic/americas.htm">support.ti.com/sc/pic/americas.htm</a>

### Europe, Middle East, and Africa

Phone	
European Free Call	00800-ASK-TEXAS (00800 275 83927)
International	+49 (0) 8161 80 2121
Russian Support	+7 (4) 95 98 10 701

**Note:** The European Free Call (Toll Free) number is not active in all countries. If you have technical difficulty calling the free call number, please use the international number above.

Fax	+ (49) (0) 8161 80 2045
Internet	<a href="http://www.ti.com/asktexas">www.ti.com/asktexas</a>
Direct Email	<a href="mailto:asktexas@ti.com">asktexas@ti.com</a>

### Japan

Fax	International	+81-3-3344-5317
	Domestic	0120-81-0036
Internet/Email	International	<a href="http://support.ti.com/sc/pic/japan.htm">support.ti.com/sc/pic/japan.htm</a>
	Domestic	<a href="http://www.tij.co.jp/pic">www.tij.co.jp/pic</a>

### Asia

Phone	Toll-Free Number
<b>Note:</b> Toll-free numbers may not support mobile and IP phones.	
Australia	1-800-999-084
China	800-820-8682
Hong Kong	800-96-5941
India	000-800-100-8888
Indonesia	001-803-8861-1006
Korea	080-551-2804
Malaysia	1-800-80-3973
New Zealand	0800-446-934
Philippines	1-800-765-7404
Singapore	800-886-1028
Taiwan	0800-006800
Thailand	001-800-886-0010
International	+86-21-23073444
Fax	+86-21-23073686
Email	<a href="mailto:tiasia@ti.com">tiasia@ti.com</a> or <a href="mailto:ti-china@ti.com">ti-china@ti.com</a>
Internet	<a href="http://support.ti.com/sc/pic/asia.htm">support.ti.com/sc/pic/asia.htm</a>

**Important Notice:** The products and services of Texas Instruments Incorporated and its subsidiaries described herein are sold subject to TI's standard terms and conditions of sale. Customers are advised to obtain the most current and complete information about TI products and services before placing orders. TI assumes no liability for applications assistance, customer's applications or product designs, software performance, or infringement of patents. The publication of information regarding any other company's products or services does not constitute TI's approval, warranty or endorsement thereof.

A021014

The platform bar and E2E are trademarks of Texas Instruments. All other trademarks are the property of their respective owners.

## IMPORTANT NOTICE

Texas Instruments Incorporated and its subsidiaries (TI) reserve the right to make corrections, enhancements, improvements and other changes to its semiconductor products and services per JESD46, latest issue, and to discontinue any product or service per JESD48, latest issue. Buyers should obtain the latest relevant information before placing orders and should verify that such information is current and complete. All semiconductor products (also referred to herein as "components") are sold subject to TI's terms and conditions of sale supplied at the time of order acknowledgment.

TI warrants performance of its components to the specifications applicable at the time of sale, in accordance with the warranty in TI's terms and conditions of sale of semiconductor products. Testing and other quality control techniques are used to the extent TI deems necessary to support this warranty. Except where mandated by applicable law, testing of all parameters of each component is not necessarily performed.

TI assumes no liability for applications assistance or the design of Buyers' products. Buyers are responsible for their products and applications using TI components. To minimize the risks associated with Buyers' products and applications, Buyers should provide adequate design and operating safeguards.

TI does not warrant or represent that any license, either express or implied, is granted under any patent right, copyright, mask work right, or other intellectual property right relating to any combination, machine, or process in which TI components or services are used. Information published by TI regarding third-party products or services does not constitute a license to use such products or services or a warranty or endorsement thereof. Use of such information may require a license from a third party under the patents or other intellectual property of the third party, or a license from TI under the patents or other intellectual property of TI.

Reproduction of significant portions of TI information in TI data books or data sheets is permissible only if reproduction is without alteration and is accompanied by all associated warranties, conditions, limitations, and notices. TI is not responsible or liable for such altered documentation. Information of third parties may be subject to additional restrictions.

Resale of TI components or services with statements different from or beyond the parameters stated by TI for that component or service voids all express and any implied warranties for the associated TI component or service and is an unfair and deceptive business practice. TI is not responsible or liable for any such statements.

Buyer acknowledges and agrees that it is solely responsible for compliance with all legal, regulatory and safety-related requirements concerning its products, and any use of TI components in its applications, notwithstanding any applications-related information or support that may be provided by TI. Buyer represents and agrees that it has all the necessary expertise to create and implement safeguards which anticipate dangerous consequences of failures, monitor failures and their consequences, lessen the likelihood of failures that might cause harm and take appropriate remedial actions. Buyer will fully indemnify TI and its representatives against any damages arising out of the use of any TI components in safety-critical applications.

In some cases, TI components may be promoted specifically to facilitate safety-related applications. With such components, TI's goal is to help enable customers to design and create their own end-product solutions that meet applicable functional safety standards and requirements. Nonetheless, such components are subject to these terms.

No TI components are authorized for use in FDA Class III (or similar life-critical medical equipment) unless authorized officers of the parties have executed a special agreement specifically governing such use.

Only those TI components which TI has specifically designated as military grade or "enhanced plastic" are designed and intended for use in military/aerospace applications or environments. Buyer acknowledges and agrees that any military or aerospace use of TI components which have **not** been so designated is solely at the Buyer's risk, and that Buyer is solely responsible for compliance with all legal and regulatory requirements in connection with such use.

TI has specifically designated certain components as meeting ISO/TS16949 requirements, mainly for automotive use. In any case of use of non-designated products, TI will not be responsible for any failure to meet ISO/TS16949.

### Products

Audio	<a href="http://www.ti.com/audio">www.ti.com/audio</a>
Amplifiers	<a href="http://amplifier.ti.com">amplifier.ti.com</a>
Data Converters	<a href="http://dataconverter.ti.com">dataconverter.ti.com</a>
DLP® Products	<a href="http://www.dlp.com">www.dlp.com</a>
DSP	<a href="http://dsp.ti.com">dsp.ti.com</a>
Clocks and Timers	<a href="http://www.ti.com/clocks">www.ti.com/clocks</a>
Interface	<a href="http://interface.ti.com">interface.ti.com</a>
Logic	<a href="http://logic.ti.com">logic.ti.com</a>
Power Mgmt	<a href="http://power.ti.com">power.ti.com</a>
Microcontrollers	<a href="http://microcontroller.ti.com">microcontroller.ti.com</a>
RFID	<a href="http://www.ti-rfid.com">www.ti-rfid.com</a>
OMAP Applications Processors	<a href="http://www.ti.com/omap">www.ti.com/omap</a>
Wireless Connectivity	<a href="http://www.ti.com/wirelessconnectivity">www.ti.com/wirelessconnectivity</a>

### Applications

Automotive and Transportation	<a href="http://www.ti.com/automotive">www.ti.com/automotive</a>
Communications and Telecom	<a href="http://www.ti.com/communications">www.ti.com/communications</a>
Computers and Peripherals	<a href="http://www.ti.com/computers">www.ti.com/computers</a>
Consumer Electronics	<a href="http://www.ti.com/consumer-apps">www.ti.com/consumer-apps</a>
Energy and Lighting	<a href="http://www.ti.com/energy">www.ti.com/energy</a>
Industrial	<a href="http://www.ti.com/industrial">www.ti.com/industrial</a>
Medical	<a href="http://www.ti.com/medical">www.ti.com/medical</a>
Security	<a href="http://www.ti.com/security">www.ti.com/security</a>
Space, Avionics and Defense	<a href="http://www.ti.com/space-avionics-defense">www.ti.com/space-avionics-defense</a>
Video and Imaging	<a href="http://www.ti.com/video">www.ti.com/video</a>

### TI E2E Community

[e2e.ti.com](http://e2e.ti.com)